

Data Path : Z:\pestpcbsrv\HPCHEM1\ECD_D\Data\PD042121\
 Data File : PD062231.D
 Signal(s) : Signal #1: ECD1A.ch Signal #2: ECD2B.ch
 Acq On : 21 Apr 2021 12:35
 Operator : AR\AJ
 Sample : M2064-22
 Misc :
 ALS Vial : 7 Sample Multiplier: 1

Instrument :
 ECD_D
 ClientSampleId :
 PEST-GPC2-BLANK-SPIKE

Integration File signal 1: autoint1.e
 Integration File signal 2: autoint2.e
 Quant Time: Apr 22 01:58:55 2021
 Quant Method : Z:\pestpcbsrv\HPCHEM1\ECD_D\Method\PD040321CLP.M
 Quant Title : GC Extractables
 QLast Update : Sat Apr 03 05:02:01 2021
 Response via : Initial Calibration
 Integrator: ChemStation

Volume Inj. : 1 µl
 Signal #1 Phase : ZB-MR2 Signal #2 Phase: ZB-MR1
 Signal #1 Info : 30M x 0.32mm x0.2 Signal #2 Info : 30M x 0.32mm x 0.50µm

Compound	RT#1	RT#2	Resp#1	Resp#2	ng/ml	ng/ml

System Monitoring Compounds						
27) SA Decachlor...	0.000	9.043	0	8548541	N.D.	0.929
Target Compounds						
2) A alpha-BHC	3.951f	0.000	220698	0	0.155	N.D. #
3) MA gamma-BHC...	4.217	4.655	24957788	303.0E6	17.924	20.369
4) MA Heptachlor	4.521	5.165	25548326	292.6E6	18.035	19.889
5) MB Aldrin	4.771	5.470	25811465	288.6E6	18.880	20.090
6) B beta-BHC	0.000	4.782f	0	13124050	N.D.	2.056
7) B delta-BHC	0.000	5.018	0	9228014	N.D.	0.603
8) B Heptachlo...	0.000	5.866	0	7521153	N.D.	0.560
9) A Endosulfan I	0.000	6.200	0	1023039	N.D.	<MDL
10) B trans-Chl...	0.000	6.122f	0	7238634	N.D.	0.523
11) B cis-Chlor...	0.000	6.174	0	6276272	N.D.	0.487
12) B 4,4'-DDE	0.000	6.322	0	5380618	N.D.	0.420
13) MA Dieldrin	5.801	6.470	53924684	553.5E6	38.499	41.918
14) MA Endrin	6.060	6.688	44699175	432.8E6	38.311	40.905
15) B Endosulfa...	0.000	6.905	0	17168505	N.D.	1.692
16) A 4,4'-DDD	6.184	6.810	2943873	57989530	2.697	5.528 #
17) MA 4,4'-DDT	6.426	7.109	36469848	360.5E6	34.220	36.282
18) B Endrin al...	6.502	7.022	596899	2892024	0.611	0.333 #
19) B Endosulfa...	6.730	0.000	114482	0	<MDL	N.D. #
21) B Endrin ke...	7.210	7.715	3072885	22646993	2.356	2.376
22) Toxaphene-1	5.801	6.322	53924684	5380618	6296.222	93.982 #
23) Toxaphene-2	0.000	6.688	0	432.8E6	N.D.	6247.487
24) Toxaphene-3	6.247	7.022	97836	2892024	9.793	30.477 #
25) Toxaphene-4	6.426	7.109	36469848	360.5E6	1696.558	1358.567
26) Toxaphene-5	7.111	7.668	2037355	4882669	85.189	43.118 #

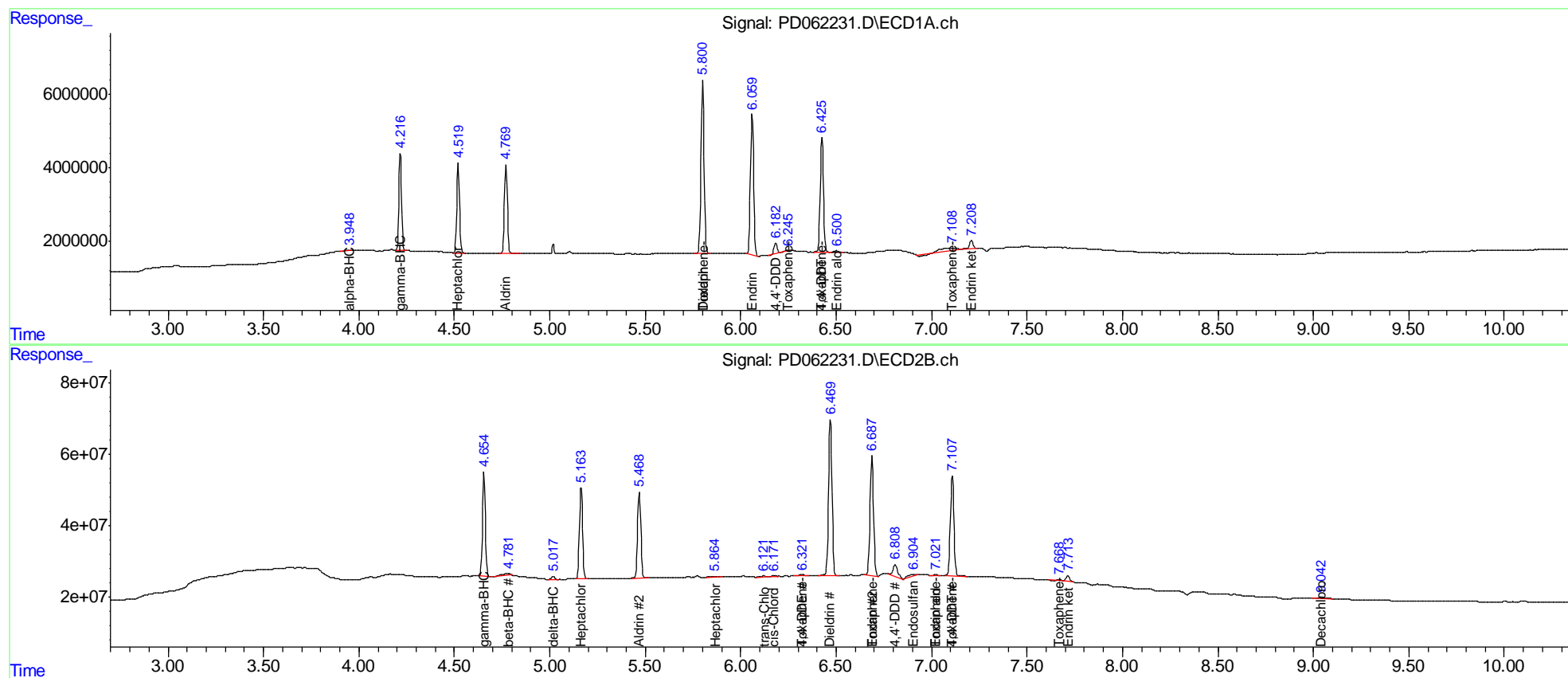
(f)=RT Delta > 1/2 Window (#)=Amounts differ by > 25% (m)=manual int.

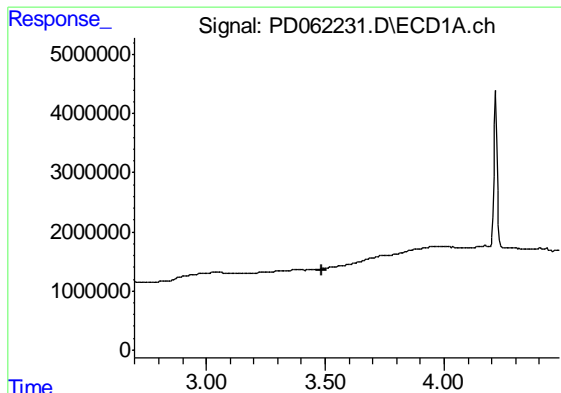
Data Path : Z:\pestpcbsrv\HPCHEM1\ECD_D\Data\PD042121\
 Data File : PD062231.D
 Signal(s) : Signal #1: ECD1A.ch Signal #2: ECD2B.ch
 Acq On : 21 Apr 2021 12:35
 Operator : AR\AJ
 Sample : M2064-22
 Misc :
 ALS Vial : 7 Sample Multiplier: 1

Instrument :
 ECD_D
 Client Sampled :
 PEST-GPC2-BLANK-SPIKE

Integration File signal 1: autoint1.e
 Integration File signal 2: autoint2.e
 Quant Time: Apr 22 01:58:55 2021
 Quant Method : Z:\pestpcbsrv\HPCHEM1\ECD_D\Method\PD040321CLP.M
 Quant Title : GC Extractables
 QLast Update : Sat Apr 03 05:02:01 2021
 Response via : Initial Calibration
 Integrator: ChemStation

Volume Inj. : 1 µl
 Signal #1 Phase : ZB-MR2 Signal #2 Phase: ZB-MR1
 Signal #1 Info : 30M x 0.32mm x0.2 Signal #2 Info : 30M x 0.32mm x 0.50µm

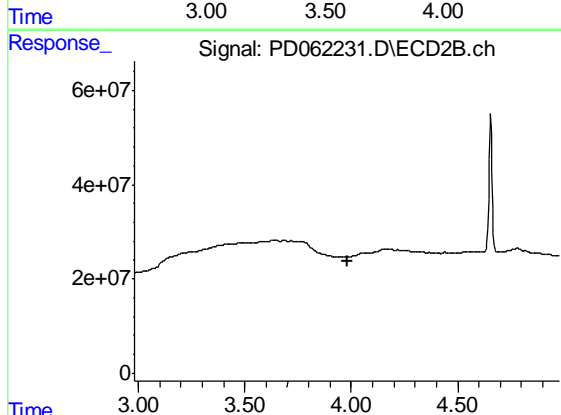




#1 Tetrachloro-m-xylene

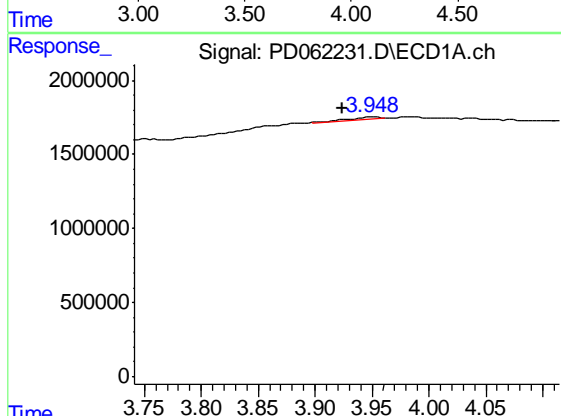
R.T.: 0.000 min
 Exp R.T. : 3.485 min
 Response: 0
 Conc: N.D.

Instrument :
 ECD_D
 ClientSampleId :
 PEST-GPC2-BLANK-SPIKE



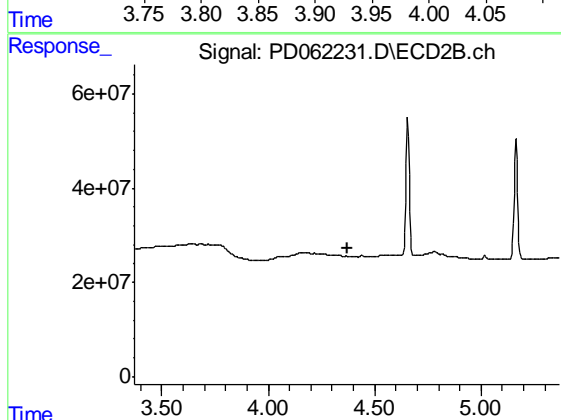
#1 Tetrachloro-m-xylene

R.T.: 0.000 min
 Exp R.T. : 3.981 min
 Response: 0
 Conc: N.D.



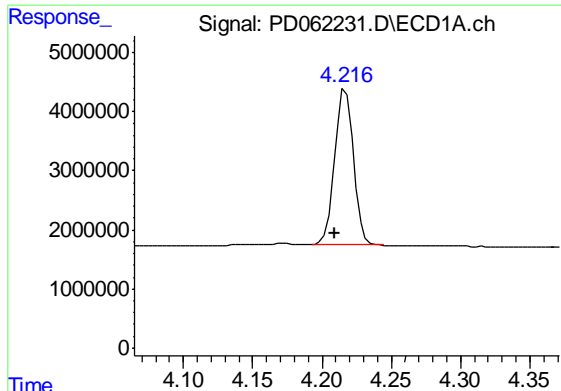
#2 alpha-BHC

R.T.: 3.951 min
 Delta R.T.: 0.027 min
 Response: 220698
 Conc: 0.16 ng/ml



#2 alpha-BHC

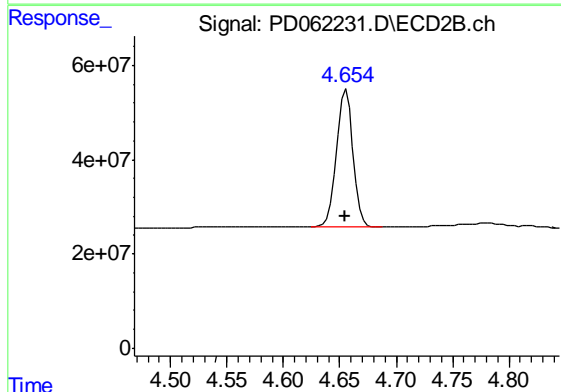
R.T.: 0.000 min
 Exp R.T. : 4.370 min
 Response: 0
 Conc: N.D.



#3 gamma-BHC (Lindane)

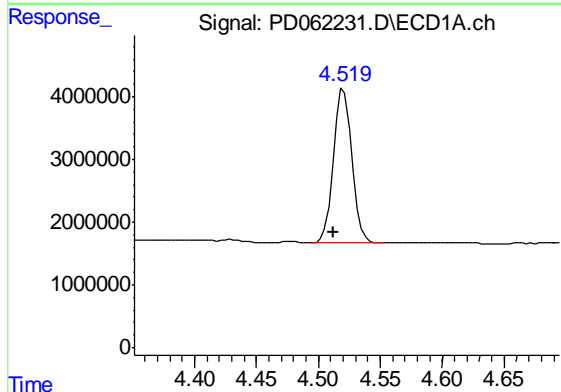
R.T.: 4.217 min
 Delta R.T.: 0.008 min
 Response: 24957788
 Conc: 17.92 ng/ml

Instrument :
 ECD_D
 ClientSampleId :
 PEST-GPC2-BLANK-SPIKE



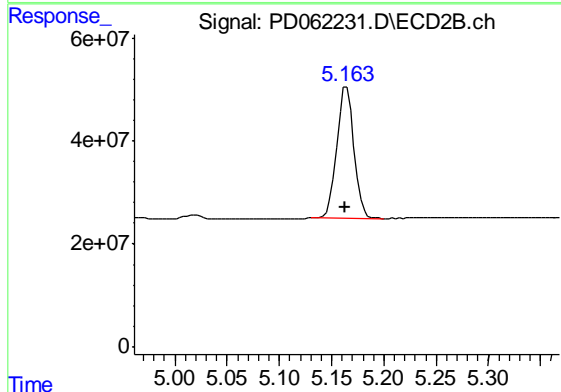
#3 gamma-BHC (Lindane)

R.T.: 4.655 min
 Delta R.T.: 0.001 min
 Response: 302988928
 Conc: 20.37 ng/ml



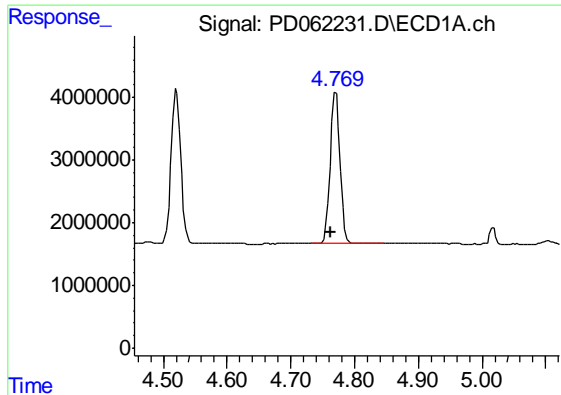
#4 Heptachlor

R.T.: 4.521 min
 Delta R.T.: 0.008 min
 Response: 25548326
 Conc: 18.04 ng/ml



#4 Heptachlor

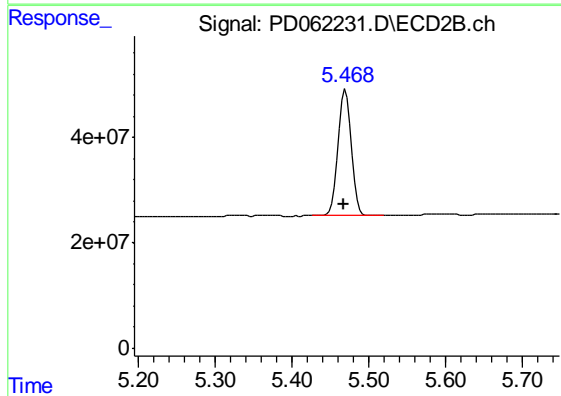
R.T.: 5.165 min
 Delta R.T.: 0.002 min
 Response: 292606609
 Conc: 19.89 ng/ml



#5 Aldrin

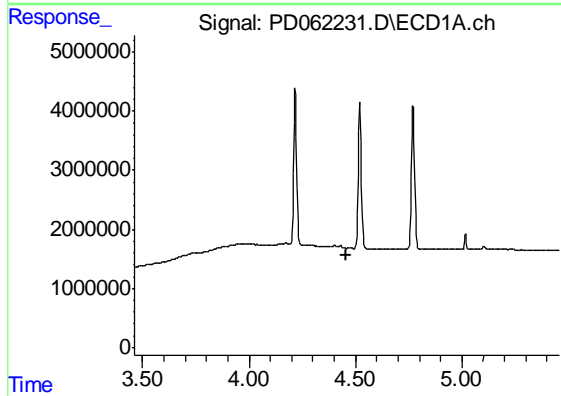
R.T.: 4.771 min
 Delta R.T.: 0.009 min
 Response: 25811465
 Conc: 18.88 ng/ml

Instrument :
 ECD_D
 ClientSampleId :
 PEST-GPC2-BLANK-SPIKE



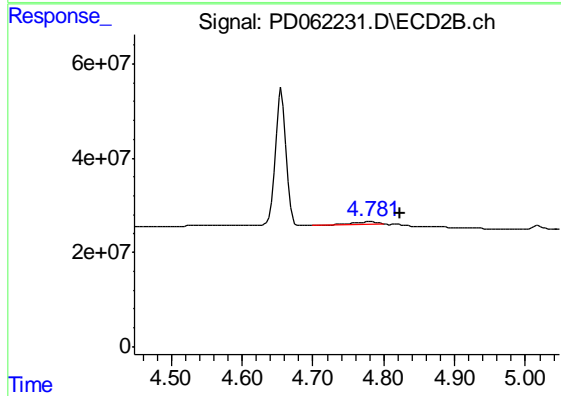
#5 Aldrin

R.T.: 5.470 min
 Delta R.T.: 0.003 min
 Response: 288625759
 Conc: 20.09 ng/ml



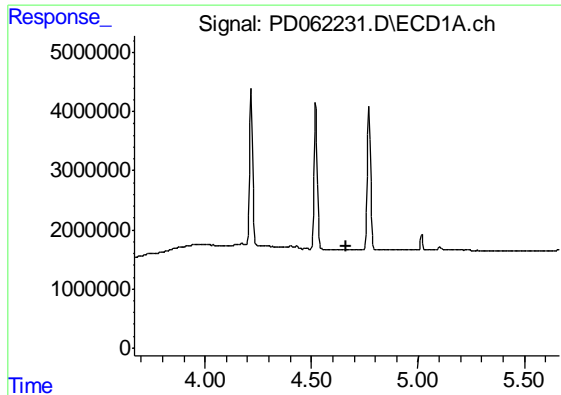
#6 beta-BHC

R.T.: 0.000 min
 Exp R.T. : 4.459 min
 Response: 0
 Conc: N.D.



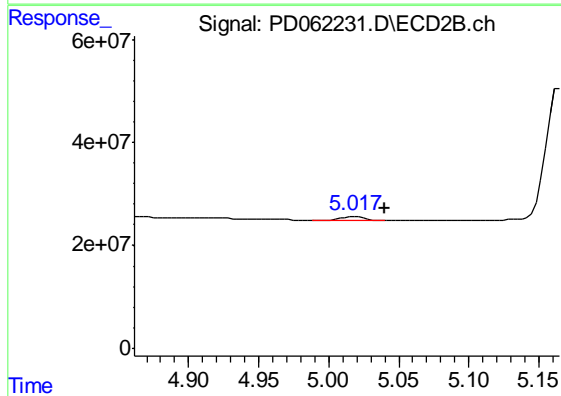
#6 beta-BHC

R.T.: 4.782 min
 Delta R.T.: -0.041 min
 Response: 13124050
 Conc: 2.06 ng/ml

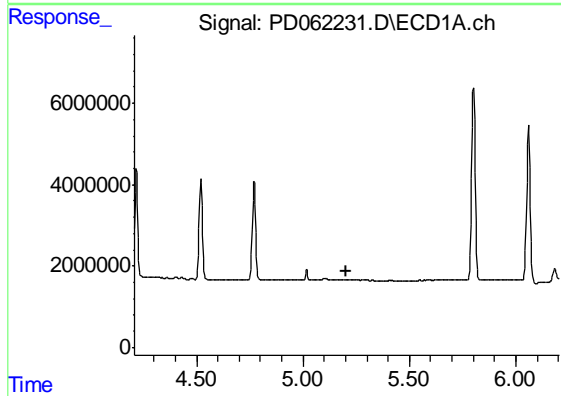


#7 delta-BHC
 R.T.: 0.000 min
 Exp R.T. : 4.665 min
 Response: 0
 Conc: N.D.

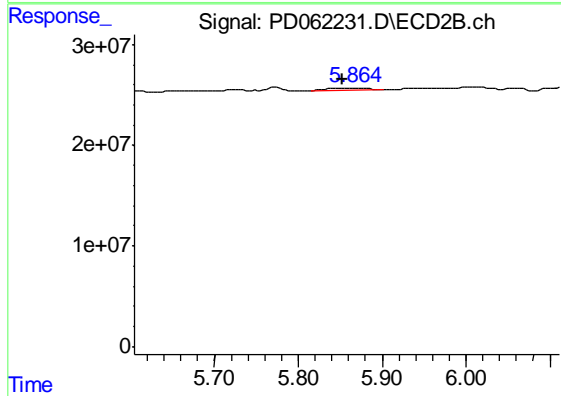
Instrument :
 ECD_D
ClientSampleId :
 PEST-GPC2-BLANK-SPIKE



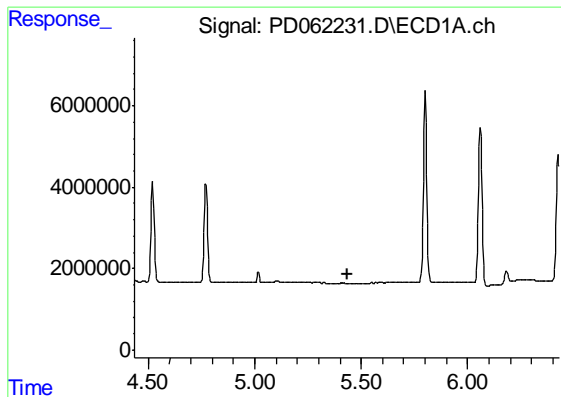
#7 delta-BHC
 R.T.: 5.018 min
 Delta R.T.: -0.022 min
 Response: 9228014
 Conc: 0.60 ng/ml



#8 Heptachlor epoxide
 R.T.: 0.000 min
 Exp R.T. : 5.206 min
 Response: 0
 Conc: N.D.

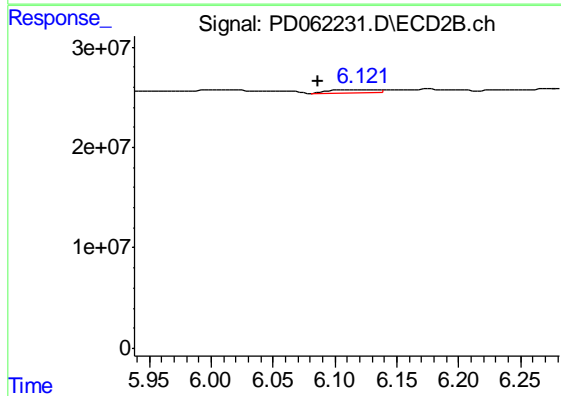


#8 Heptachlor epoxide
 R.T.: 5.866 min
 Delta R.T.: 0.013 min
 Response: 7521153
 Conc: 0.56 ng/ml

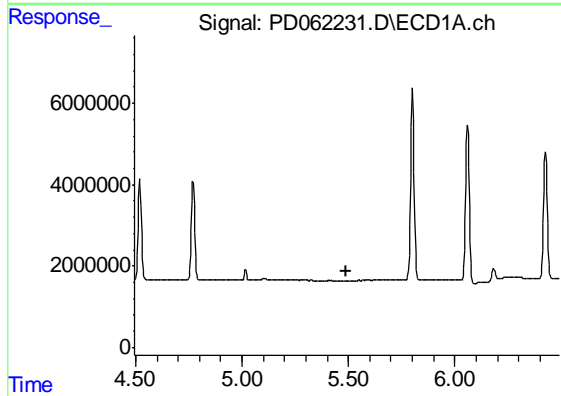


#10 trans-Chlordane
 R.T.: 0.000 min
 Exp R.T. : 5.433 min
 Response: 0
 Conc: N.D.

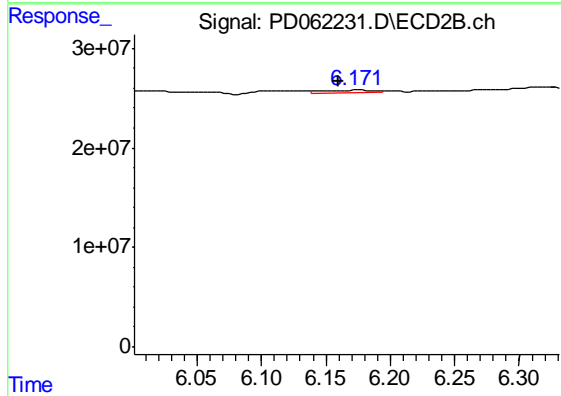
Instrument :
 ECD_D
 ClientSampleId :
 PEST-GPC2-BLANK-SPIKE



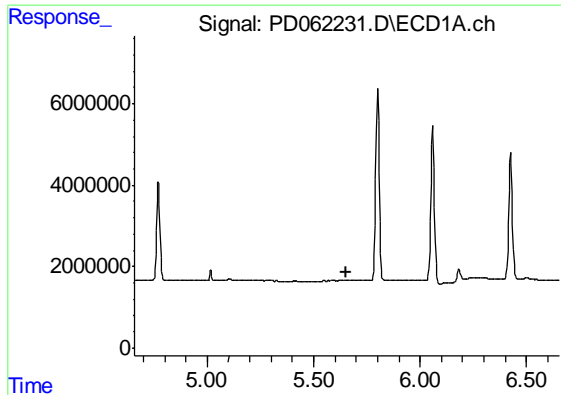
#10 trans-Chlordane
 R.T.: 6.122 min
 Delta R.T.: 0.035 min
 Response: 7238634
 Conc: 0.52 ng/ml



#11 cis-Chlordane
 R.T.: 0.000 min
 Exp R.T. : 5.492 min
 Response: 0
 Conc: N.D.

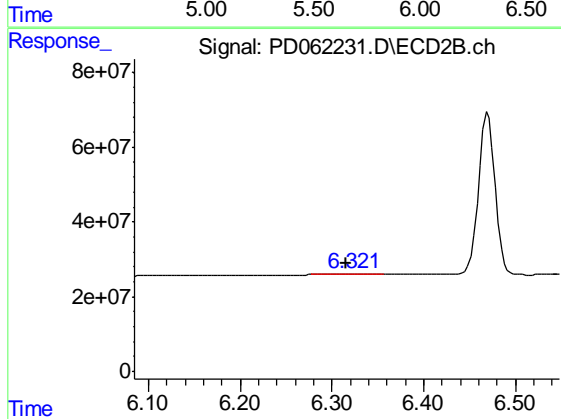


#11 cis-Chlordane
 R.T.: 6.174 min
 Delta R.T.: 0.015 min
 Response: 6276272
 Conc: 0.49 ng/ml

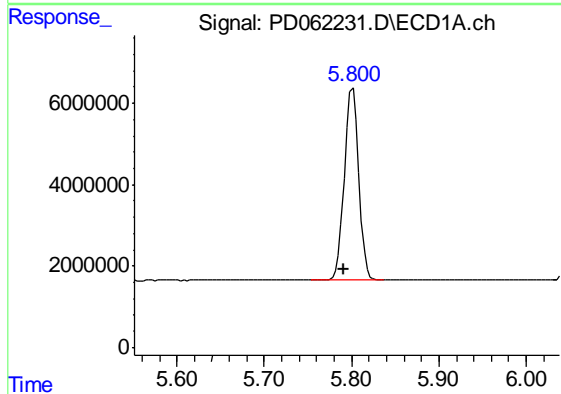


#12 4,4'-DDE
 R.T.: 0.000 min
 Exp R.T. : 5.656 min
 Response: 0
 Conc: N.D.

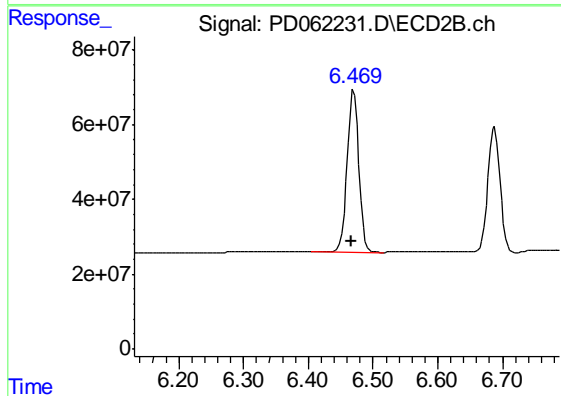
Instrument :
 ECD_D
ClientSampleId :
 PEST-GPC2-BLANK-SPIKE



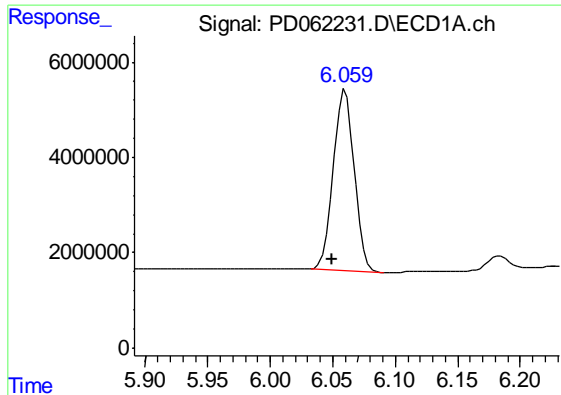
#12 4,4'-DDE
 R.T.: 6.322 min
 Delta R.T.: 0.006 min
 Response: 5380618
 Conc: 0.42 ng/ml



#13 Dieldrin
 R.T.: 5.801 min
 Delta R.T.: 0.010 min
 Response: 53924684
 Conc: 38.50 ng/ml

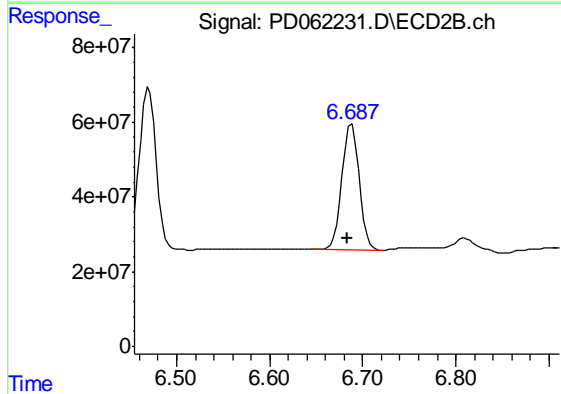


#13 Dieldrin
 R.T.: 6.470 min
 Delta R.T.: 0.004 min
 Response: 553455686
 Conc: 41.92 ng/ml

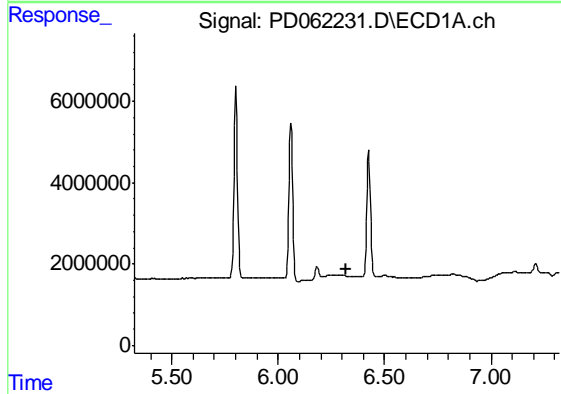


#14 Endrin
 R.T.: 6.060 min
 Delta R.T.: 0.011 min
 Response: 44699175
 Conc: 38.31 ng/ml

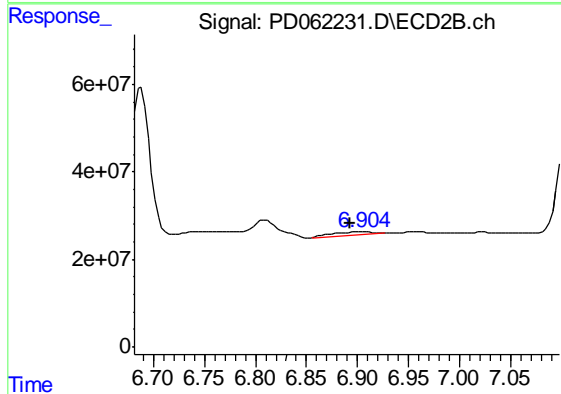
Instrument :
 ECD_D
 ClientSampleId :
 PEST-GPC2-BLANK-SPIKE



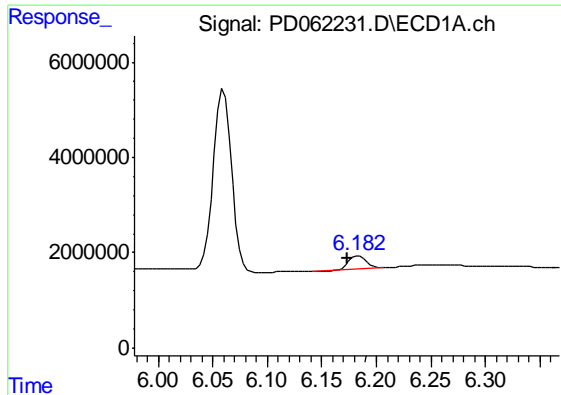
#14 Endrin
 R.T.: 6.688 min
 Delta R.T.: 0.004 min
 Response: 432798880
 Conc: 40.91 ng/ml



#15 Endosulfan II
 R.T.: 0.000 min
 Exp R.T. : 6.322 min
 Response: 0
 Conc: N.D.



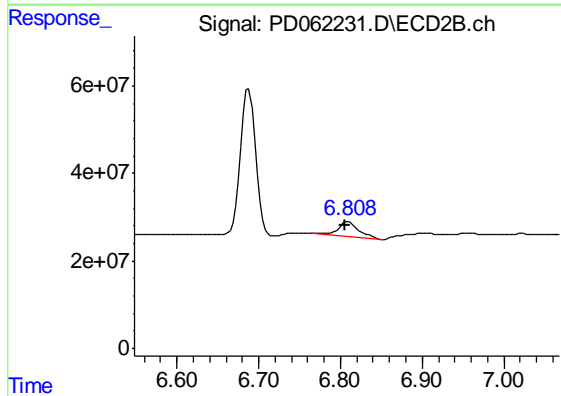
#15 Endosulfan II
 R.T.: 6.905 min
 Delta R.T.: 0.013 min
 Response: 17168505
 Conc: 1.69 ng/ml



#16 4,4'-DDD

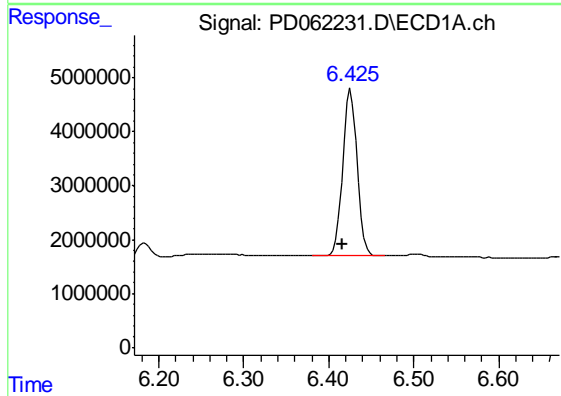
R.T.: 6.184 min
 Delta R.T.: 0.010 min
 Response: 2943873
 Conc: 2.70 ng/ml

Instrument :
 ECD_D
 ClientSampleId :
 PEST-GPC2-BLANK-SPIKE



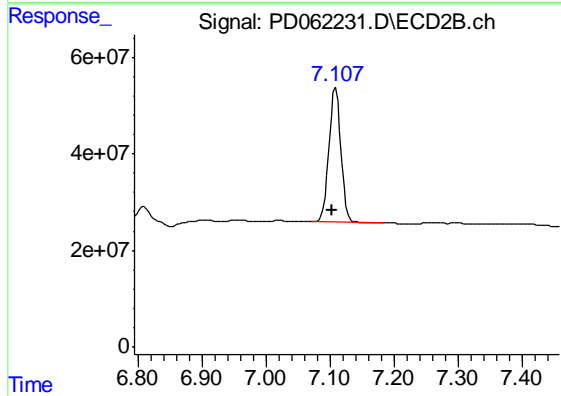
#16 4,4'-DDD

R.T.: 6.810 min
 Delta R.T.: 0.004 min
 Response: 57989530
 Conc: 5.53 ng/ml



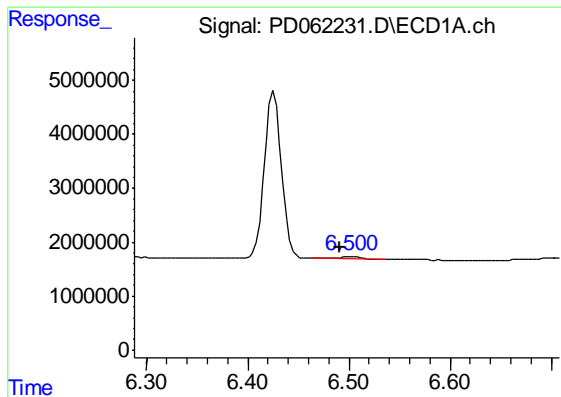
#17 4,4'-DDT

R.T.: 6.426 min
 Delta R.T.: 0.010 min
 Response: 36469848
 Conc: 34.22 ng/ml



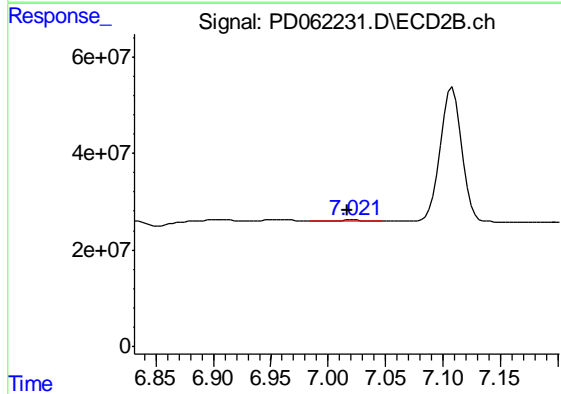
#17 4,4'-DDT

R.T.: 7.109 min
 Delta R.T.: 0.005 min
 Response: 360500016
 Conc: 36.28 ng/ml

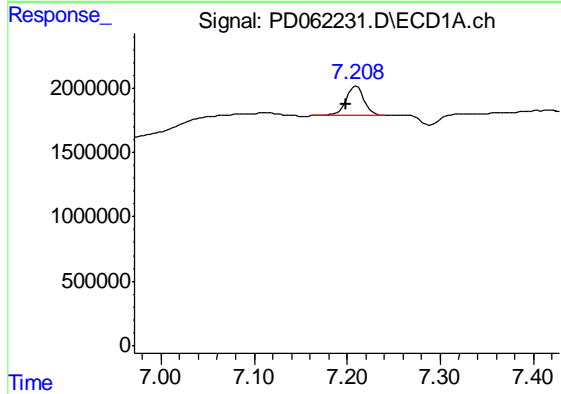


#18 Endrin aldehyde
 R.T.: 6.502 min
 Delta R.T.: 0.011 min
 Response: 596899
 Conc: 0.61 ng/ml

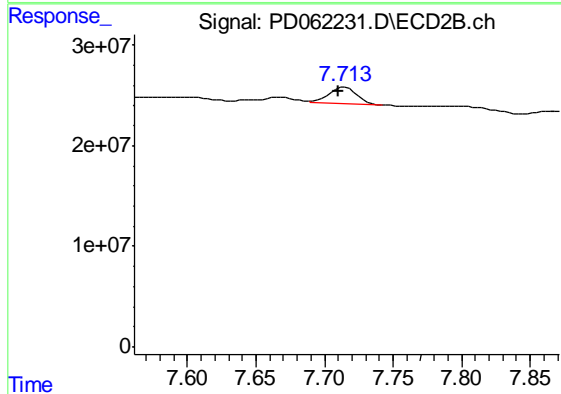
Instrument :
 ECD_D
 ClientSampleId :
 PEST-GPC2-BLANK-SPIKE



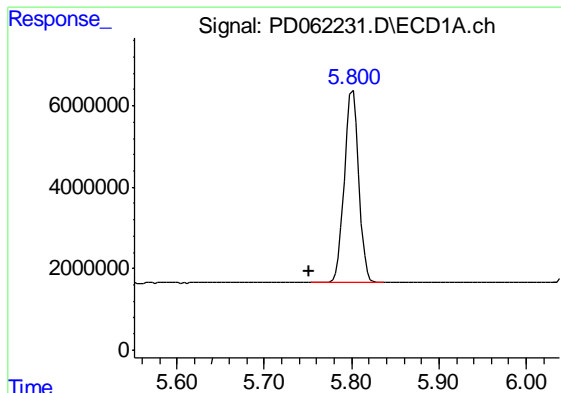
#18 Endrin aldehyde
 R.T.: 7.022 min
 Delta R.T.: 0.006 min
 Response: 2892024
 Conc: 0.33 ng/ml



#21 Endrin ketone
 R.T.: 7.210 min
 Delta R.T.: 0.011 min
 Response: 3072885
 Conc: 2.36 ng/ml

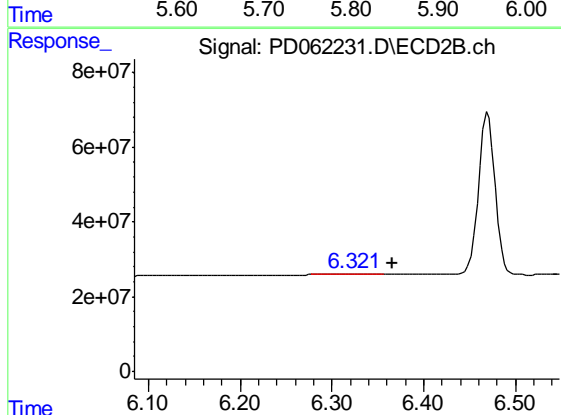


#21 Endrin ketone
 R.T.: 7.715 min
 Delta R.T.: 0.005 min
 Response: 22646993
 Conc: 2.38 ng/ml

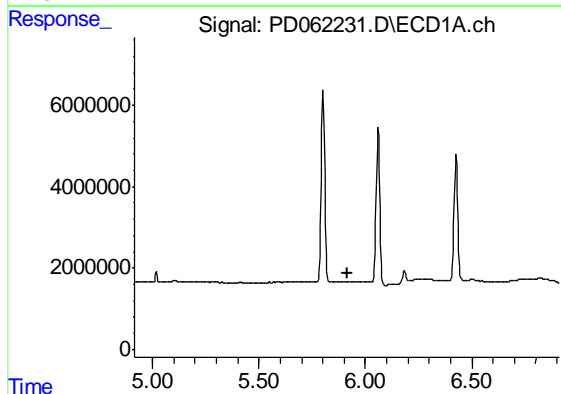


#22 Toxaphene-1
 R.T.: 5.801 min
 Delta R.T.: 0.049 min
 Response: 53924684
 Conc: 6296.22 ng/ml

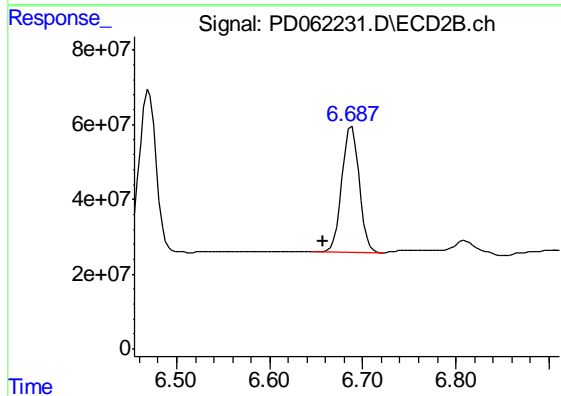
Instrument :
 ECD_D
 ClientSampleId :
 PEST-GPC2-BLANK-SPIKE



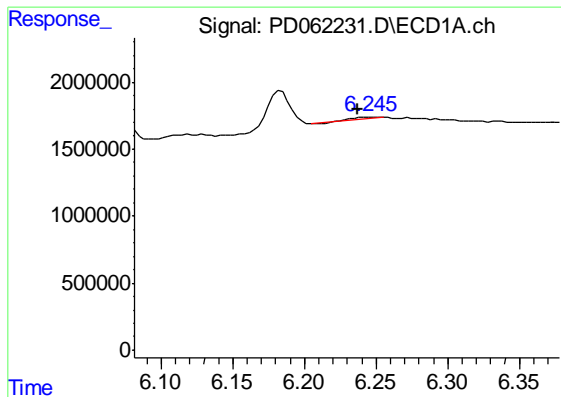
#22 Toxaphene-1
 R.T.: 6.322 min
 Delta R.T.: -0.043 min
 Response: 5380618
 Conc: 93.98 ng/ml



#23 Toxaphene-2
 R.T.: 0.000 min
 Exp R.T. : 5.914 min
 Response: 0
 Conc: N.D.

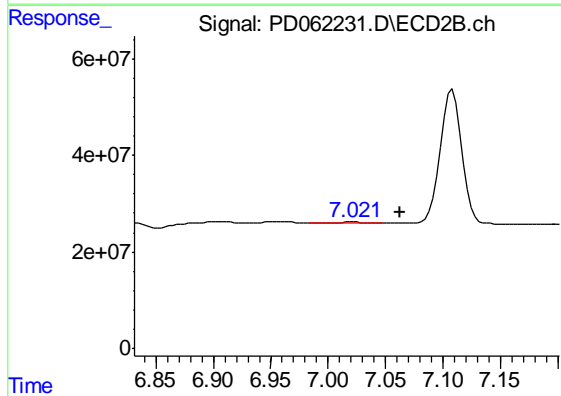


#23 Toxaphene-2
 R.T.: 6.688 min
 Delta R.T.: 0.031 min
 Response: 432798880
 Conc: 6247.49 ng/ml

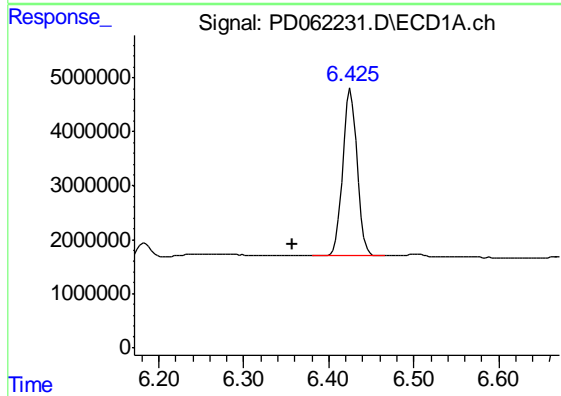


#24 Toxaphene-3
 R.T.: 6.247 min
 Delta R.T.: 0.010 min
 Response: 97836
 Conc: 9.79 ng/ml

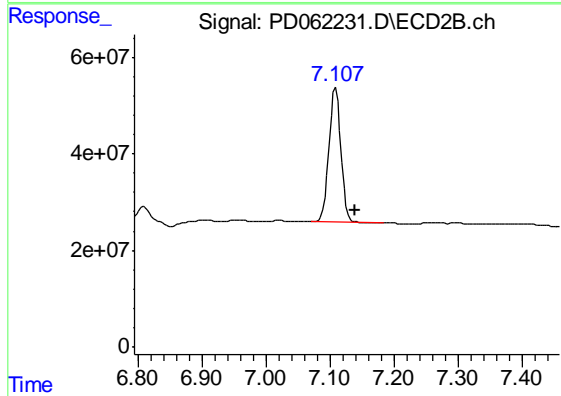
Instrument :
 ECD_D
 ClientSampleId :
 PEST-GPC2-BLANK-SPIKE



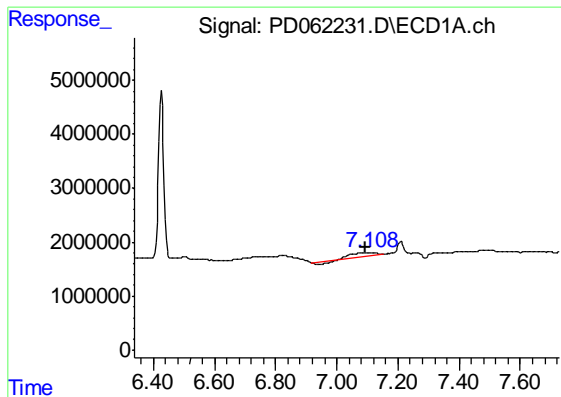
#24 Toxaphene-3
 R.T.: 7.022 min
 Delta R.T.: -0.041 min
 Response: 2892024
 Conc: 30.48 ng/ml



#25 Toxaphene-4
 R.T.: 6.426 min
 Delta R.T.: 0.069 min
 Response: 36469848
 Conc: 1696.56 ng/ml



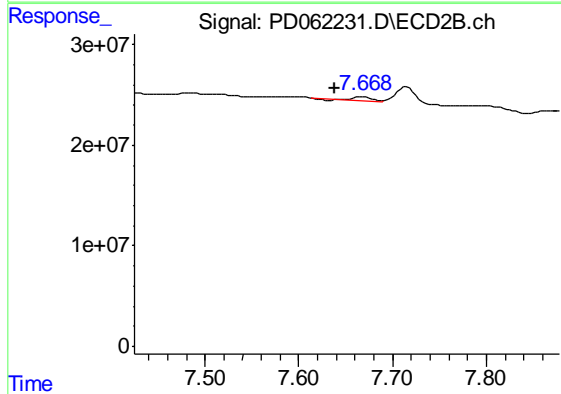
#25 Toxaphene-4
 R.T.: 7.109 min
 Delta R.T.: -0.031 min
 Response: 360500016
 Conc: 1358.57 ng/ml



#26 Toxaphene-5

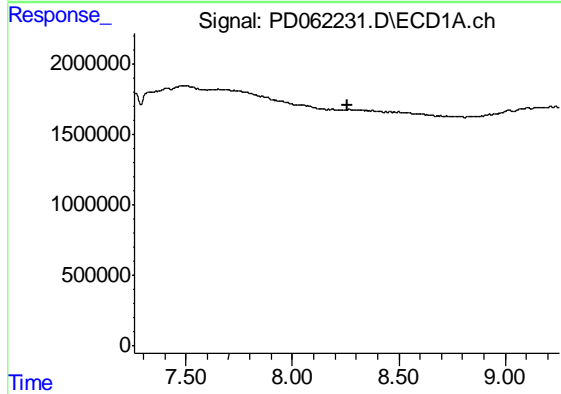
R.T.: 7.111 min
 Delta R.T.: 0.019 min
 Response: 2037355
 Conc: 85.19 ng/ml

Instrument :
 ECD_D
 ClientSampleId :
 PEST-GPC2-BLANK-SPIKE



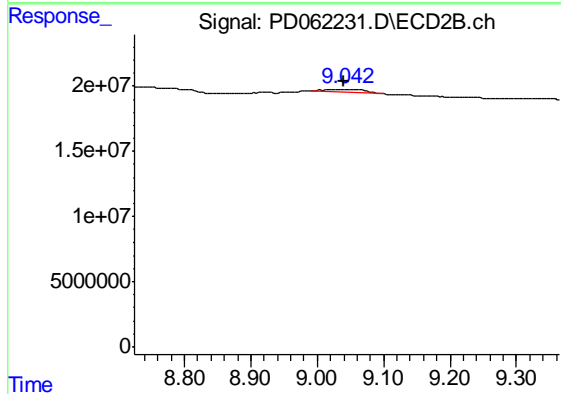
#26 Toxaphene-5

R.T.: 7.668 min
 Delta R.T.: 0.029 min
 Response: 4882669
 Conc: 43.12 ng/ml



#27 Decachlorobiphenyl

R.T.: 0.000 min
 Exp R.T. : 8.257 min
 Response: 0
 Conc: N.D.



#27 Decachlorobiphenyl

R.T.: 9.043 min
 Delta R.T.: 0.004 min
 Response: 8548541
 Conc: 0.93 ng/ml