

Data Path : Z:\pestpcbsrv\HPCHEM1\ECD_D\Data\PD051321\
 Data File : PD062899.D
 Signal(s) : Signal #1: ECD1A.ch Signal #2: ECD2B.ch
 Acq On : 12 May 2021 20:13
 Operator : AR\AJ
 Sample : M2361-01MSD 10X
 Misc :
 ALS Vial : 13 Sample Multiplier: 1

Instrument :
 ECD_D
Client Sampled :
 CL-02-051121MSD

Manual Integrations
APPROVED
 Ankita
 5/14/2021 11:14:38 AM

Integration File signal 1: autoint1.e
 Integration File signal 2: autoint2.e
 Quant Time: May 12 23:20:37 2021
 Quant Method : Z:\pestpcbsrv\HPCHEM1\ECD_D\Method\PD050621.M
 Quant Title : GC Extractables
 QLast Update : Thu May 06 08:49:38 2021
 Response via : Initial Calibration
 Integrator: ChemStation

Volume Inj. : 2 µl
 Signal #1 Phase : ZB-MR2 Signal #2 Phase: ZB-MR1
 Signal #1 Info : 30M x 0.32mm x0.2 Signal #2 Info : 30M x 0.32mm x 0.50µm

Compound	RT#1	RT#2	Resp#1	Resp#2	ng/ml	ng/ml

System Monitoring Compounds						
1) SA Tetrachlo...	3.441	3.971	2395299	27814899	2.694	2.403
28) SA Decachlor...	8.198	9.026	3018226	30214868	2.851	2.619m
Target Compounds						
2) A alpha-BHC	3.877	4.359	7624240	103.6E6	5.483	5.383
3) MA gamma-BHC...	4.161	4.643	8179085	95092225	6.259	5.502
4) MA Heptachlor	4.462	5.150	7268964	94741665	5.726	5.398m
5) MB Aldrin	4.710	5.456	6885464	93484954	5.719	5.590
6) B beta-BHC	4.410	4.813	3638587	36129067	6.073m	4.737m
7) B delta-BHC	4.616	5.028	7105279	145.4E6	5.270	8.056m#
8) B Heptachlo...	5.153	5.842	6890788	103.7E6	5.955	6.492m
9) A Endosulfan I	5.491	6.198	6108801	78375401	5.576m	5.310
10) B gamma-Chl...	5.379	6.074	8021708	105.1E6	6.815m	6.603m
11) B alpha-Chl...	5.438	6.149	8136359	111.4E6	7.025	7.297
12) B 4,4'-DDE	5.603	6.302	7407171	86181988	6.442	5.441m
13) MA Dieldrin	5.735	6.455	8032936	87486608	6.689	5.415
14) MA Endrin	5.993	6.672	6505299	77140724	5.853	5.487
15) B Endosulfa...	6.267	6.881	6332091	61716757	6.078	4.620
16) A 4,4'-DDD	6.119	6.794	4812095	66069112	5.053	5.113
17) MA 4,4'-DDT	6.359	7.094	5464924	71234034	5.692m	5.592
18) B Endrin al...	6.434	7.005	4908497	48289570	5.262m	4.139
19) B Endosulfa...	6.649	7.228	5449080	60129378	5.204	4.323
20) A Methoxychlor	6.906	7.552	3719483	32304166	6.318	4.840
21) B Endrin ke...	7.140	7.699	5711075	73021374	4.581	5.381
22) Mirex	7.328	8.153	4568270	52093400	4.990	5.687

(f)=RT Delta > 1/2 Window (#)=Amounts differ by > 25% (m)=manual int.

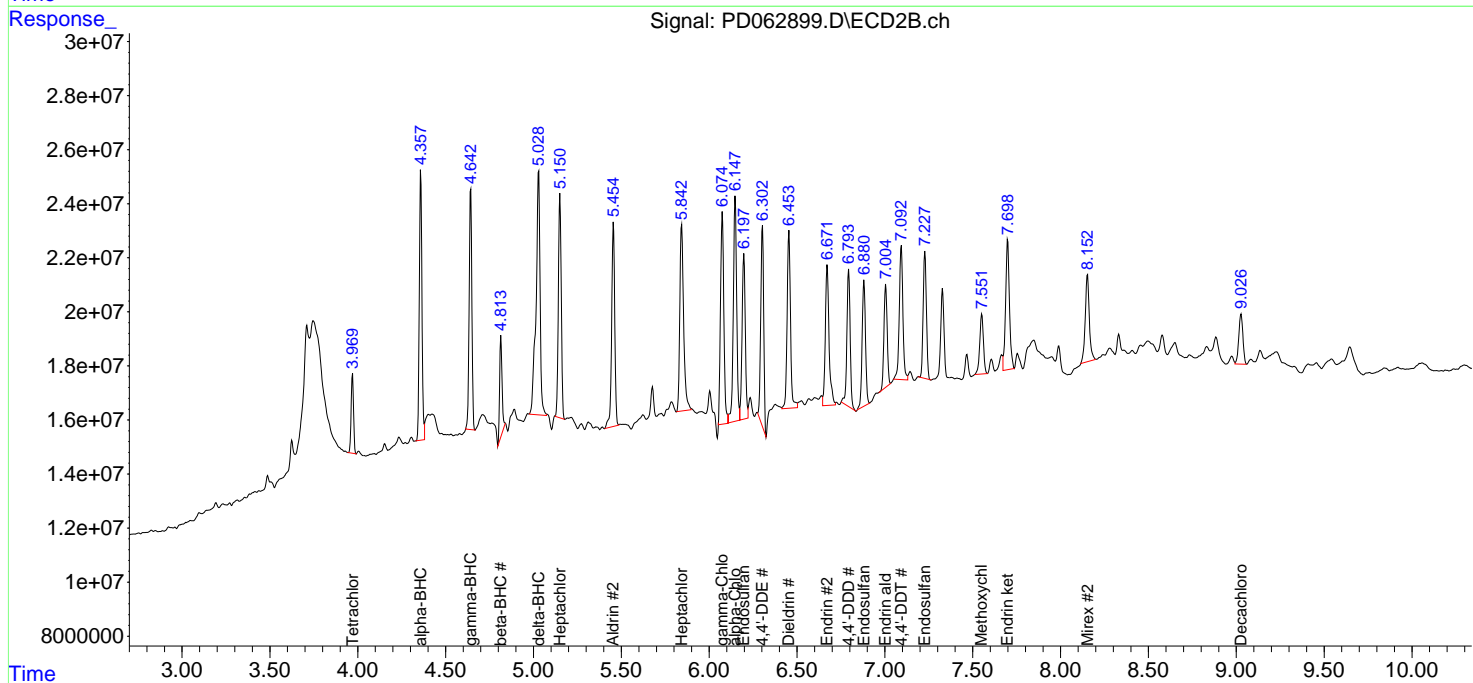
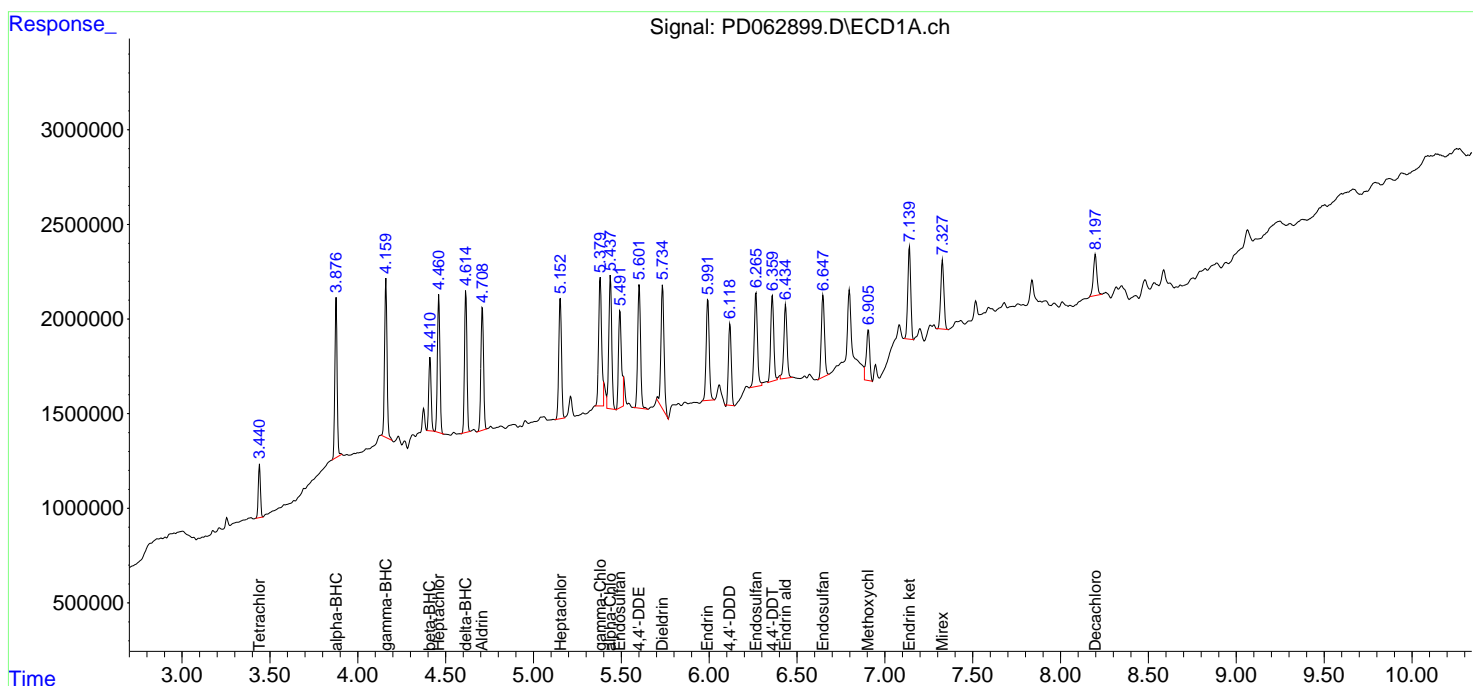
Data Path : Z:\pestpcbsrv\HPCHEM1\ECD_D\Data\PD051321\
 Data File : PD062899.D
 Signal(s) : Signal #1: ECD1A.ch Signal #2: ECD2B.ch
 Acq On : 12 May 2021 20:13
 Operator : AR\AJ
 Sample : M2361-01MSD 10X
 Misc :
 ALS Vial : 13 Sample Multiplier: 1

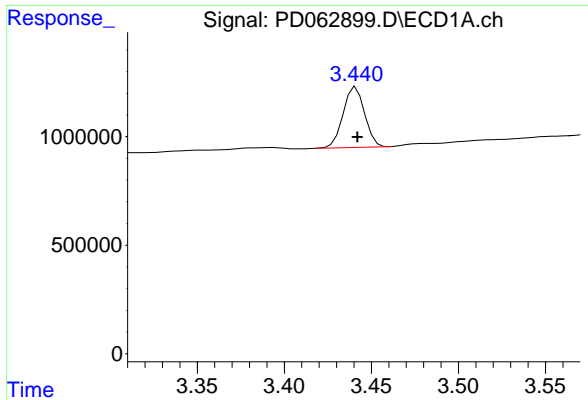
Instrument :
 ECD_D
 Client Sampled :
 CL-02-051121MSD

Manual Integrations
APPROVED
 Ankita
 5/14/2021 11:14:38 AM

Integration File signal 1: autoint1.e
 Integration File signal 2: autoint2.e
 Quant Time: May 12 23:20:37 2021
 Quant Method : Z:\pestpcbsrv\HPCHEM1\ECD_D\Method\PD050621.M
 Quant Title : GC Extractables
 QLast Update : Thu May 06 08:49:38 2021
 Response via : Initial Calibration
 Integrator: ChemStation

Volume Inj. : 2 µl
 Signal #1 Phase : ZB-MR2 Signal #2 Phase: ZB-MR1
 Signal #1 Info : 30M x 0.32mm x0.2 Signal #2 Info : 30M x 0.32mm x 0.50µm

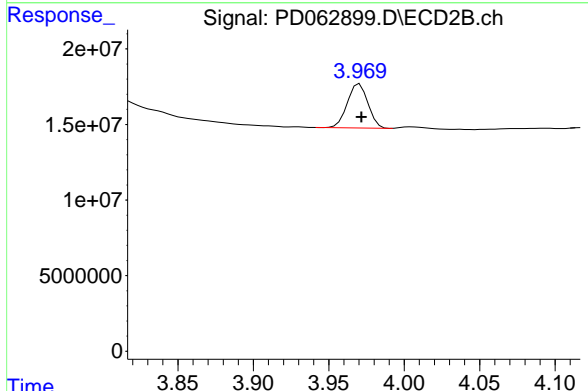




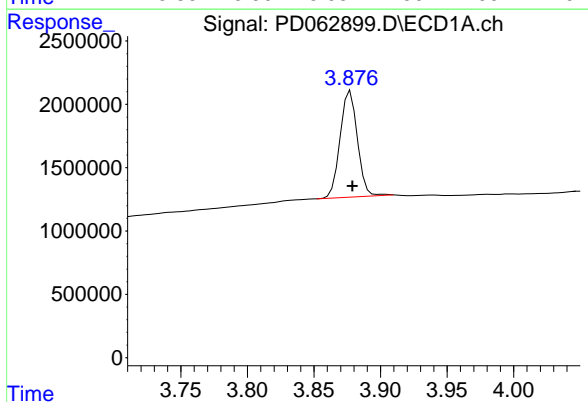
#1 Tetrachloro-m-xylene
 R.T.: 3.441 min
 Delta R.T.: 0.000 min
 Response: 2395299
 Conc: 2.69 ng/ml

Instrument :
 ECD_D
ClientSampled :
 CL-02-051121MSD

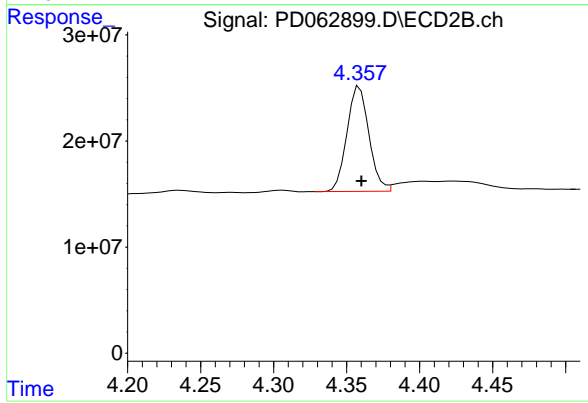
Manual Integrations
APPROVED
 Ankita
 5/14/2021 11:14:38 AM



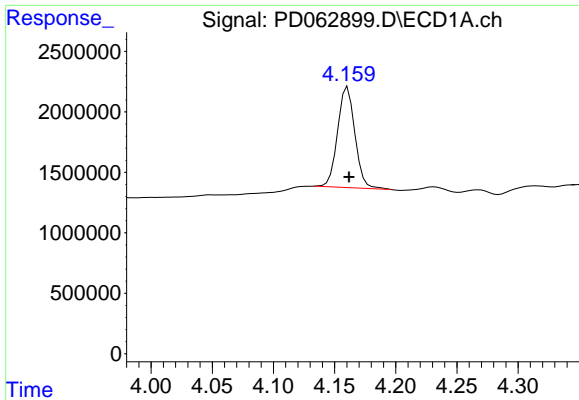
#1 Tetrachloro-m-xylene
 R.T.: 3.971 min
 Delta R.T.: -0.001 min
 Response: 27814899
 Conc: 2.40 ng/ml



#2 alpha-BHC
 R.T.: 3.877 min
 Delta R.T.: -0.001 min
 Response: 7624240
 Conc: 5.48 ng/ml



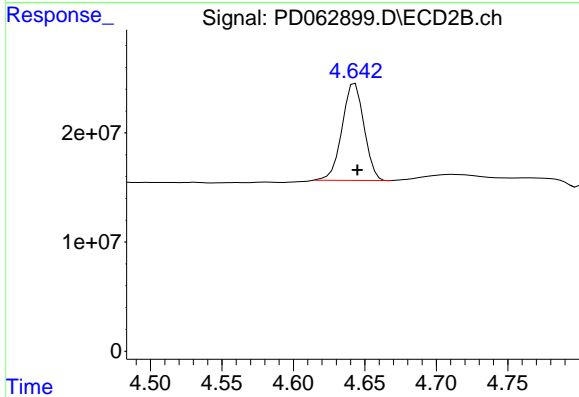
#2 alpha-BHC
 R.T.: 4.359 min
 Delta R.T.: -0.001 min
 Response: 103625777
 Conc: 5.38 ng/ml



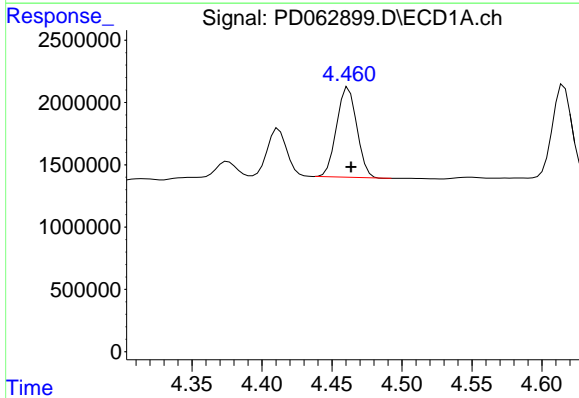
#3 gamma-BHC (Lindane)
 R.T.: 4.161 min
 Delta R.T.: -0.001 min
 Response: 8179085
 Conc: 6.26 ng/ml

Instrument :
 ECD_D
 ClientSampleId :
 CL-02-051121MSD

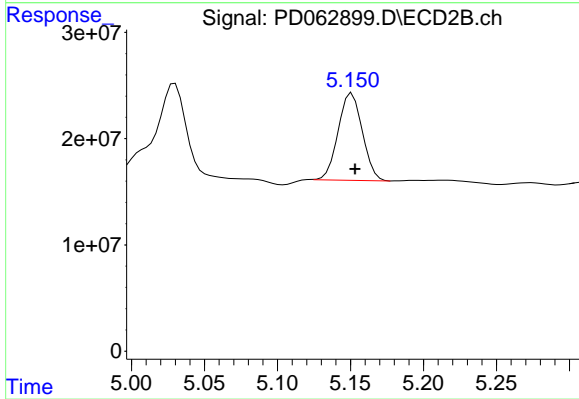
Manual Integrations
 APPROVED
 Ankita
 5/14/2021 11:14:38 AM



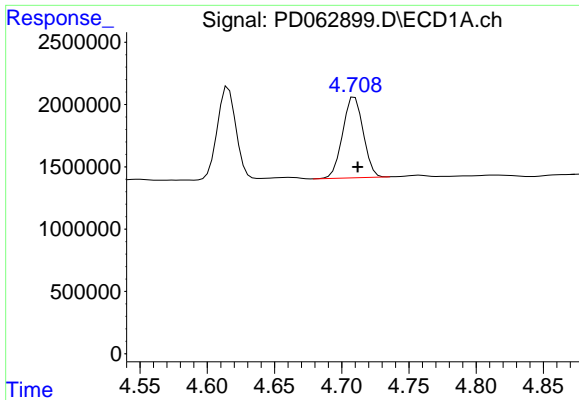
#3 gamma-BHC (Lindane)
 R.T.: 4.643 min
 Delta R.T.: -0.002 min
 Response: 95092225
 Conc: 5.50 ng/ml



#4 Heptachlor
 R.T.: 4.462 min
 Delta R.T.: -0.002 min
 Response: 7268964
 Conc: 5.73 ng/ml



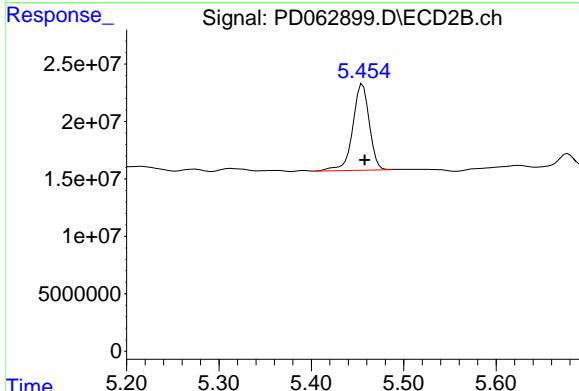
#4 Heptachlor
 R.T.: 5.150 min
 Delta R.T.: -0.003 min
 Response: 94741665
 Conc: 5.40 ng/ml m



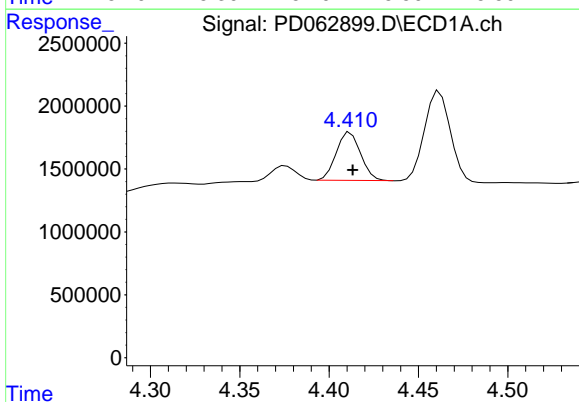
#5 Aldrin
 R.T.: 4.710 min
 Delta R.T.: -0.002 min
 Response: 6885464
 Conc: 5.72 ng/ml

Instrument :
 ECD_D
ClientSampled :
 CL-02-051121MSD

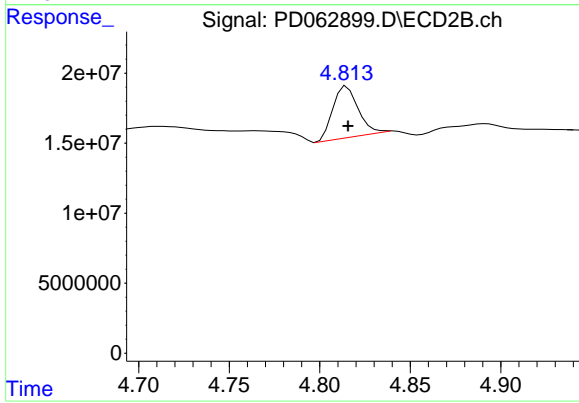
Manual Integrations
APPROVED
 Ankita
 5/14/2021 11:14:38 AM



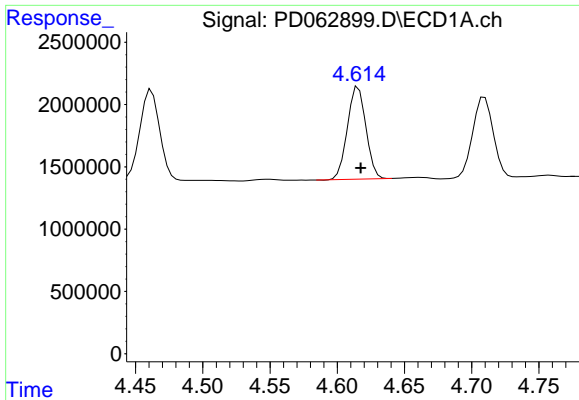
#5 Aldrin
 R.T.: 5.456 min
 Delta R.T.: -0.002 min
 Response: 93484954
 Conc: 5.59 ng/ml



#6 beta-BHC
 R.T.: 4.410 min
 Delta R.T.: -0.003 min
 Response: 3638587
 Conc: 6.07 ng/ml m



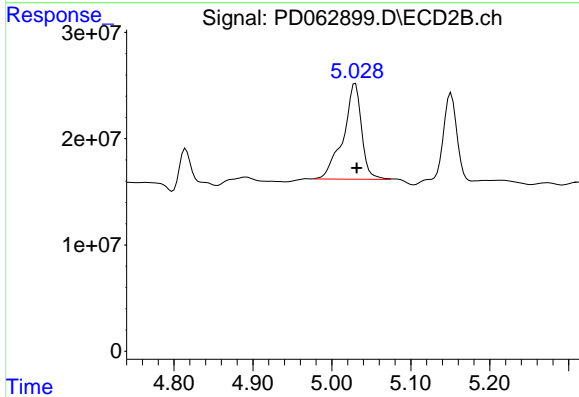
#6 beta-BHC
 R.T.: 4.813 min
 Delta R.T.: -0.002 min
 Response: 36129067
 Conc: 4.74 ng/ml m



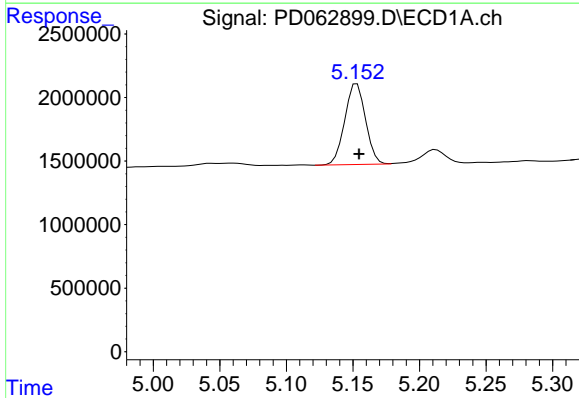
#7 delta-BHC
 R.T.: 4.616 min
 Delta R.T.: -0.002 min
 Response: 7105279
 Conc: 5.27 ng/ml

Instrument :
 ECD_D
ClientSampled :
 CL-02-051121MSD

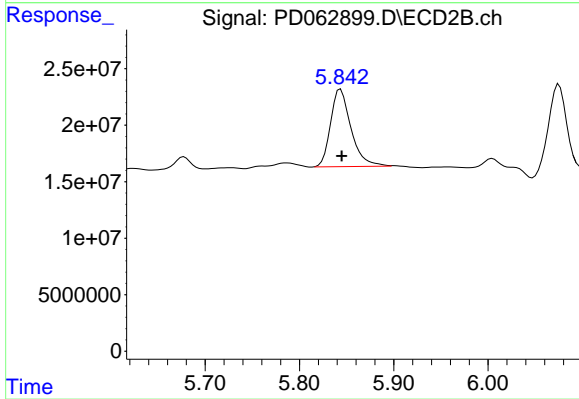
Manual Integrations
APPROVED
 Ankita
 5/14/2021 11:14:38 AM



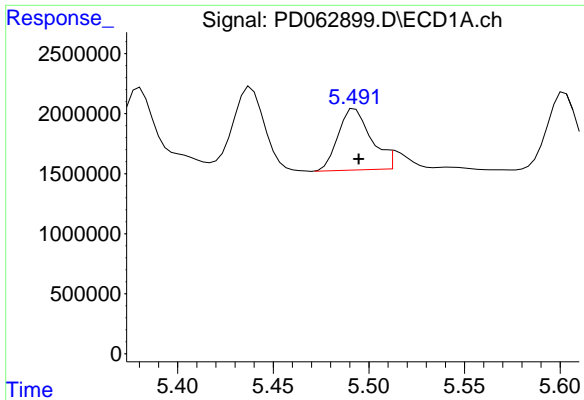
#7 delta-BHC
 R.T.: 5.028 min
 Delta R.T.: -0.003 min
 Response: 145422332
 Conc: 8.06 ng/ml m



#8 Heptachlor epoxide
 R.T.: 5.153 min
 Delta R.T.: -0.002 min
 Response: 6890788
 Conc: 5.96 ng/ml



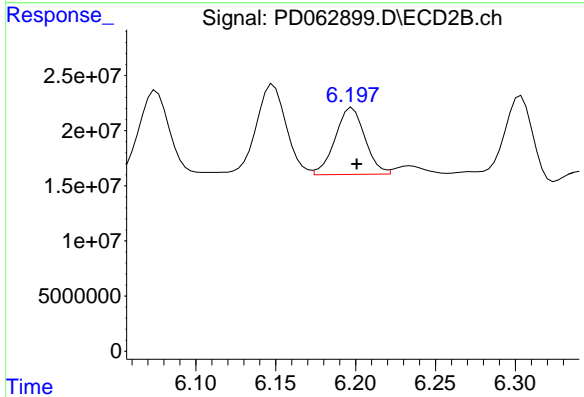
#8 Heptachlor epoxide
 R.T.: 5.842 min
 Delta R.T.: -0.003 min
 Response: 103704271
 Conc: 6.49 ng/ml m



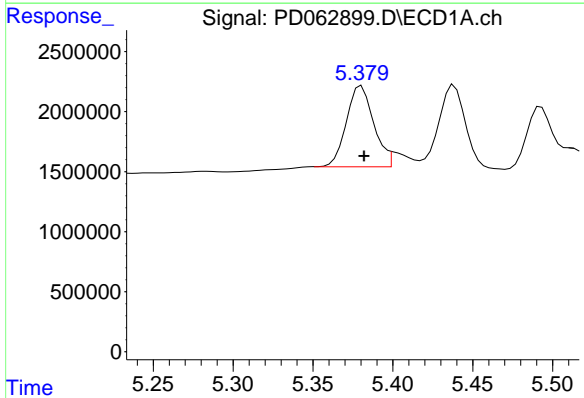
#9 Endosulfan I
 R.T.: 5.491 min
 Delta R.T.: -0.003 min
 Response: 6108801
 Conc: 5.58 ng/ml m

Instrument :
 ECD_D
ClientSampled :
 CL-02-051121MSD

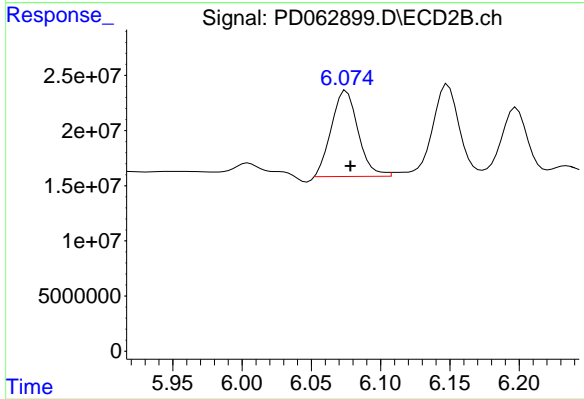
Manual Integrations
APPROVED
 Ankita
 5/14/2021 11:14:38 AM



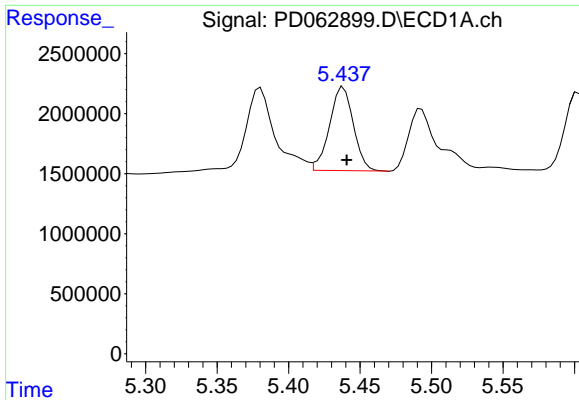
#9 Endosulfan I
 R.T.: 6.198 min
 Delta R.T.: -0.003 min
 Response: 78375401
 Conc: 5.31 ng/ml



#10 gamma-Chlordane
 R.T.: 5.379 min
 Delta R.T.: -0.003 min
 Response: 8021708
 Conc: 6.82 ng/ml m



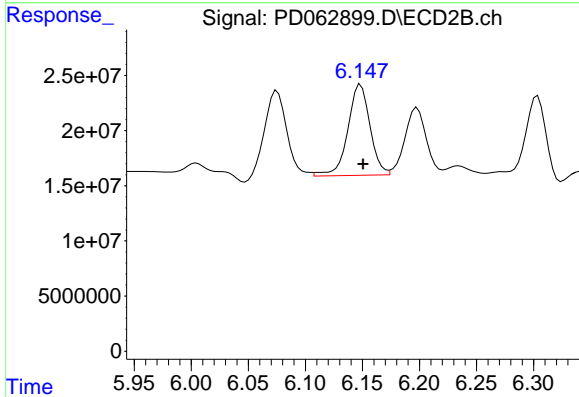
#10 gamma-Chlordane
 R.T.: 6.074 min
 Delta R.T.: -0.004 min
 Response: 105064627
 Conc: 6.60 ng/ml m



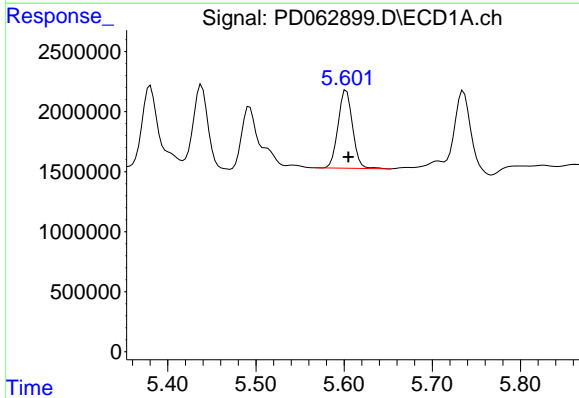
#11 alpha-Chlordane
 R.T.: 5.438 min
 Delta R.T.: -0.002 min
 Response: 8136359
 Conc: 7.03 ng/ml

Instrument :
 ECD_D
ClientSampled :
 CL-02-051121MSD

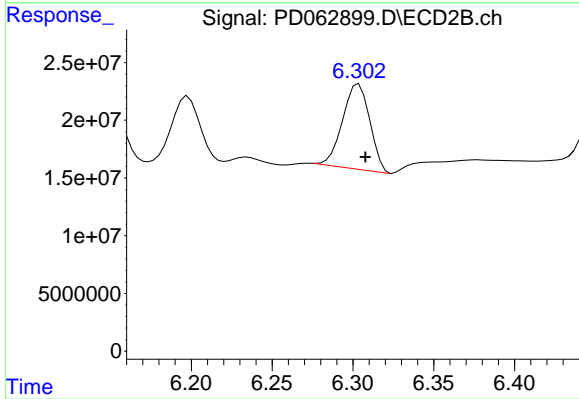
Manual Integrations
APPROVED
 Ankita
 5/14/2021 11:14:38 AM



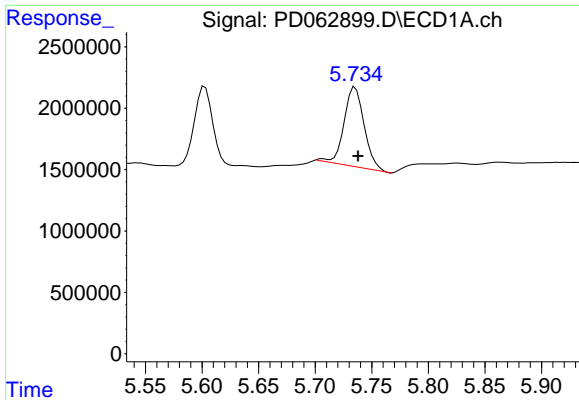
#11 alpha-Chlordane
 R.T.: 6.149 min
 Delta R.T.: -0.002 min
 Response: 111402652
 Conc: 7.30 ng/ml



#12 4,4'-DDE
 R.T.: 5.603 min
 Delta R.T.: -0.002 min
 Response: 7407171
 Conc: 6.44 ng/ml



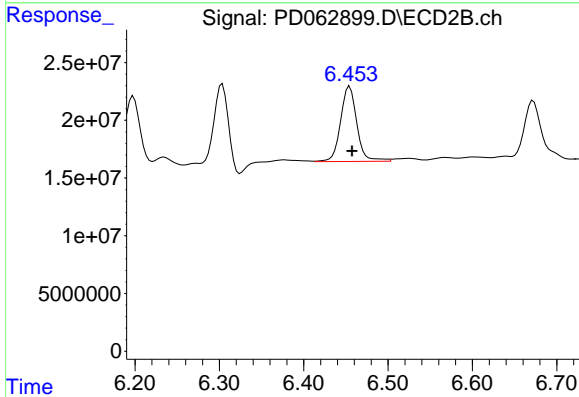
#12 4,4'-DDE
 R.T.: 6.302 min
 Delta R.T.: -0.006 min
 Response: 86181988
 Conc: 5.44 ng/ml m



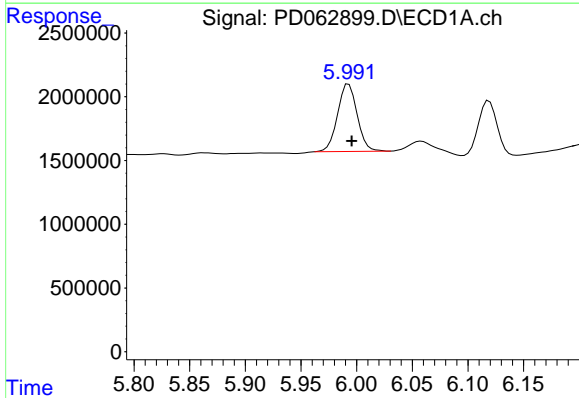
#13 Dieldrin
 R.T.: 5.735 min
 Delta R.T.: -0.003 min
 Response: 8032936
 Conc: 6.69 ng/ml

Instrument :
 ECD_D
 ClientSampled :
 CL-02-051121MSD

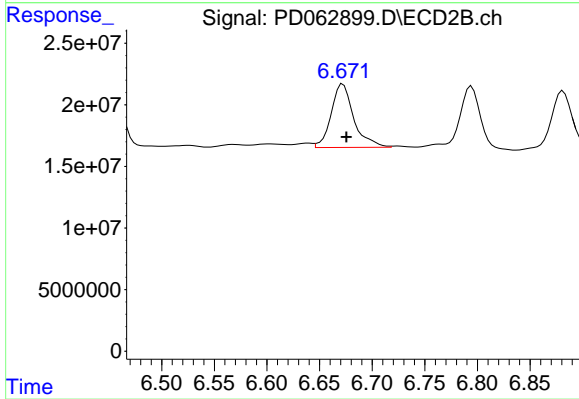
Manual Integrations
 APPROVED
 Ankita
 5/14/2021 11:14:38 AM



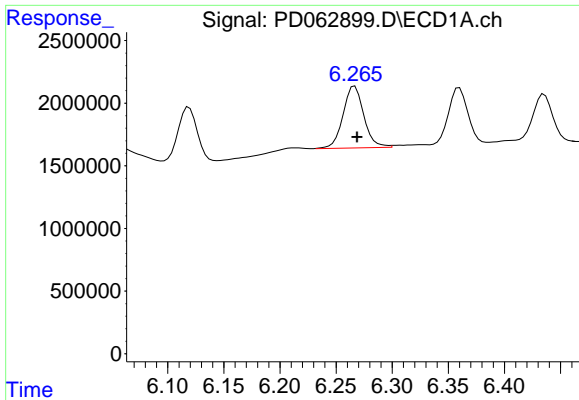
#13 Dieldrin
 R.T.: 6.455 min
 Delta R.T.: -0.003 min
 Response: 87486608
 Conc: 5.41 ng/ml



#14 Endrin
 R.T.: 5.993 min
 Delta R.T.: -0.003 min
 Response: 6505299
 Conc: 5.85 ng/ml



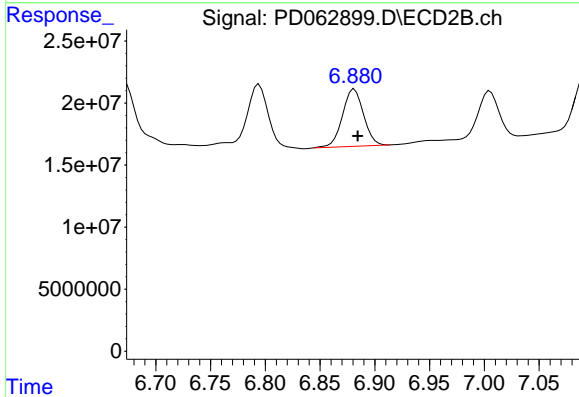
#14 Endrin
 R.T.: 6.672 min
 Delta R.T.: -0.003 min
 Response: 77140724
 Conc: 5.49 ng/ml



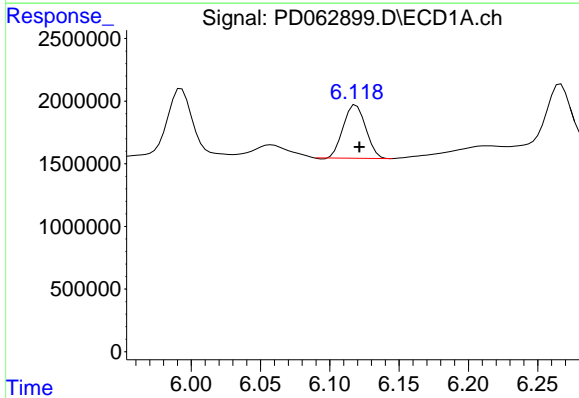
#15 Endosulfan II
 R.T.: 6.267 min
 Delta R.T.: -0.002 min
 Response: 6332091
 Conc: 6.08 ng/ml

Instrument :
 ECD_D
ClientSampleId :
 CL-02-051121MSD

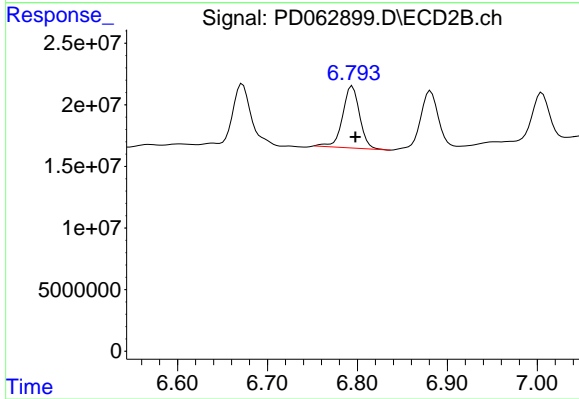
Manual Integrations
APPROVED
 Ankita
 5/14/2021 11:14:38 AM



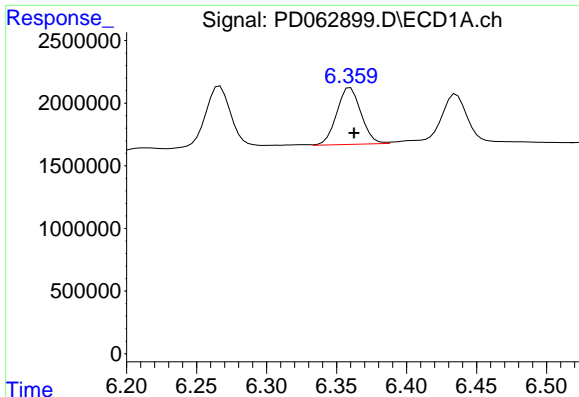
#15 Endosulfan II
 R.T.: 6.881 min
 Delta R.T.: -0.003 min
 Response: 61716757
 Conc: 4.62 ng/ml



#16 4,4'-DDD
 R.T.: 6.119 min
 Delta R.T.: -0.002 min
 Response: 4812095
 Conc: 5.05 ng/ml



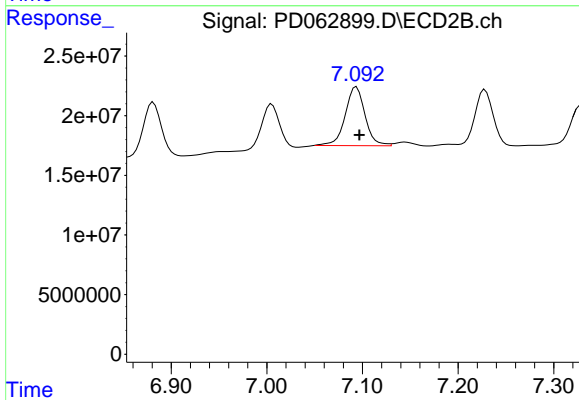
#16 4,4'-DDD
 R.T.: 6.794 min
 Delta R.T.: -0.003 min
 Response: 66069112
 Conc: 5.11 ng/ml



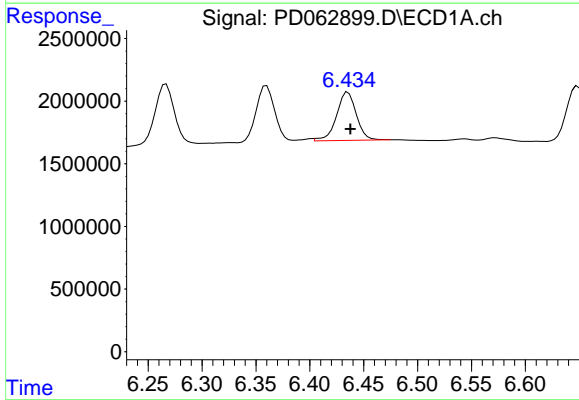
#17 4,4'-DDT
 R.T.: 6.359 min
 Delta R.T.: -0.004 min
 Response: 5464924
 Conc: 5.69 ng/ml m

Instrument :
 ECD_D
ClientSampled :
 CL-02-051121MSD

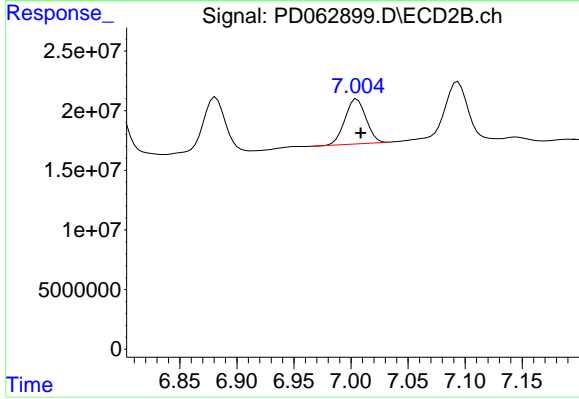
Manual Integrations
APPROVED
 Ankita
 5/14/2021 11:14:38 AM



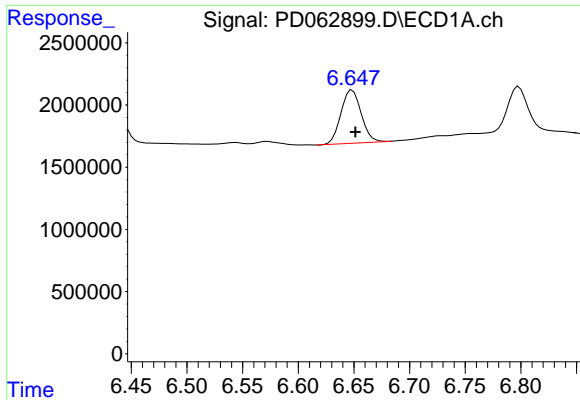
#17 4,4'-DDT
 R.T.: 7.094 min
 Delta R.T.: -0.003 min
 Response: 71234034
 Conc: 5.59 ng/ml



#18 Endrin aldehyde
 R.T.: 6.434 min
 Delta R.T.: -0.004 min
 Response: 4908497
 Conc: 5.26 ng/ml m



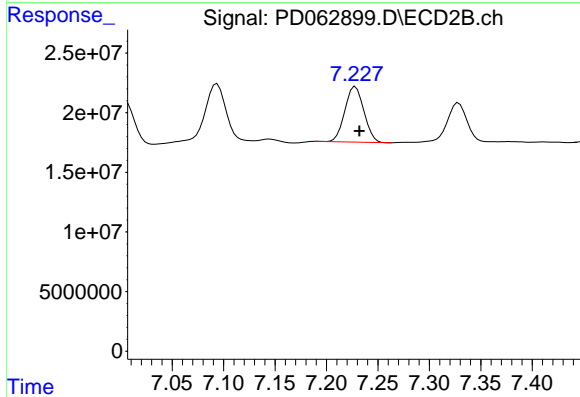
#18 Endrin aldehyde
 R.T.: 7.005 min
 Delta R.T.: -0.003 min
 Response: 48289570
 Conc: 4.14 ng/ml



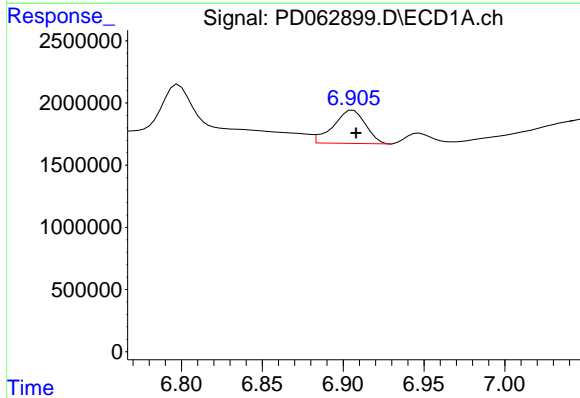
#19 Endosulfan Sulfate
 R.T.: 6.649 min
 Delta R.T.: -0.003 min
 Response: 5449080
 Conc: 5.20 ng/ml

Instrument :
 ECD_D
ClientSampleId :
 CL-02-051121MSD

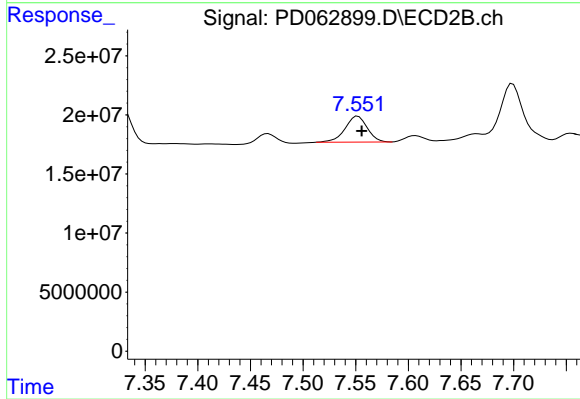
Manual Integrations
APPROVED
 Ankita
 5/14/2021 11:14:38 AM



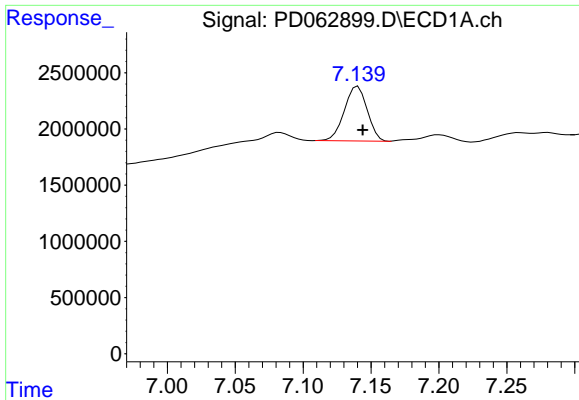
#19 Endosulfan Sulfate
 R.T.: 7.228 min
 Delta R.T.: -0.004 min
 Response: 60129378
 Conc: 4.32 ng/ml



#20 Methoxychlor
 R.T.: 6.906 min
 Delta R.T.: -0.002 min
 Response: 3719483
 Conc: 6.32 ng/ml



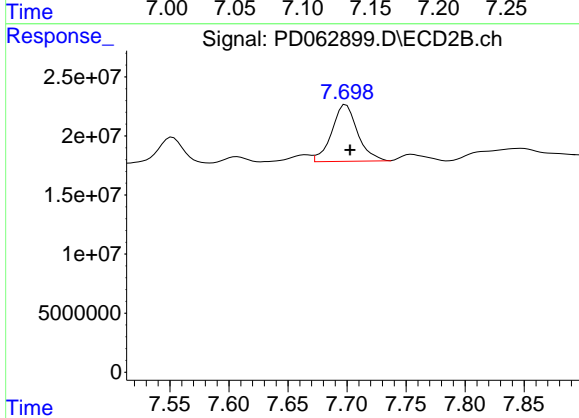
#20 Methoxychlor
 R.T.: 7.552 min
 Delta R.T.: -0.004 min
 Response: 32304166
 Conc: 4.84 ng/ml



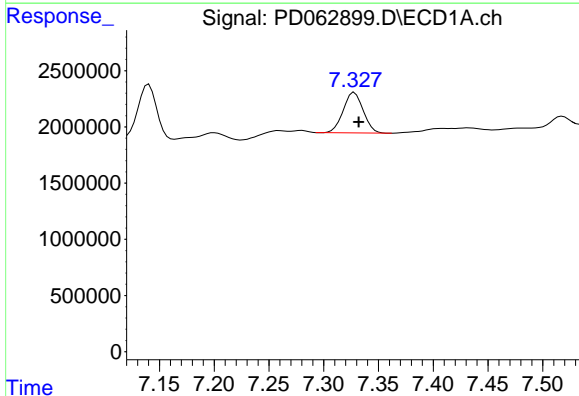
#21 Endrin ketone
 R.T.: 7.140 min
 Delta R.T.: -0.004 min
 Response: 5711075
 Conc: 4.58 ng/ml

Instrument :
 ECD_D
 ClientSampleId :
 CL-02-051121MSD

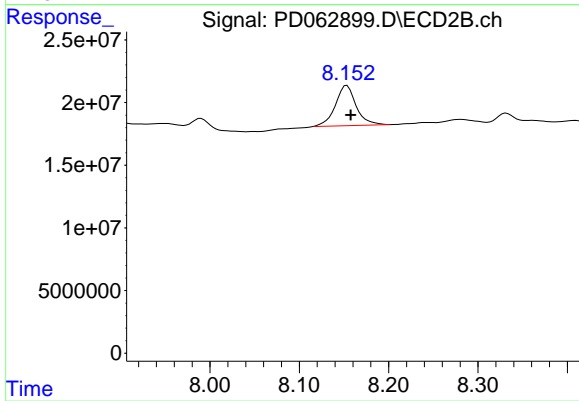
Manual Integrations
 APPROVED
 Ankita
 5/14/2021 11:14:38 AM



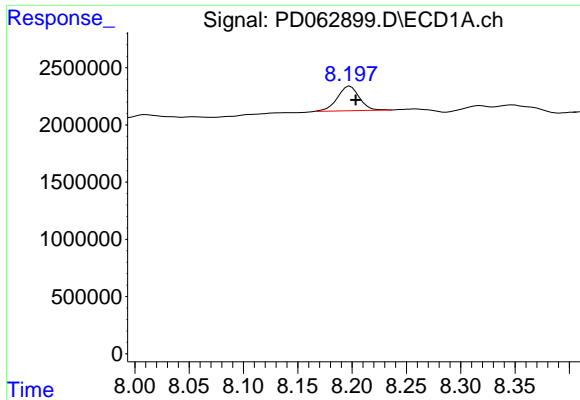
#21 Endrin ketone
 R.T.: 7.699 min
 Delta R.T.: -0.003 min
 Response: 73021374
 Conc: 5.38 ng/ml



#22 Mirex
 R.T.: 7.328 min
 Delta R.T.: -0.004 min
 Response: 4568270
 Conc: 4.99 ng/ml



#22 Mirex
 R.T.: 8.153 min
 Delta R.T.: -0.004 min
 Response: 52093400
 Conc: 5.69 ng/ml



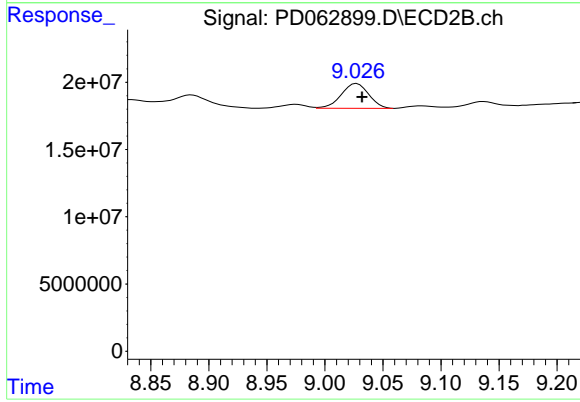
#28 Decachlorobiphenyl

R.T.: 8.198 min
Delta R.T.: -0.005 min
Response: 3018226
Conc: 2.85 ng/ml

Instrument :
ECD_D
ClientSampleId :
CL-02-051121MSD

Manual Integrations
APPROVED

Ankita
5/14/2021 11:14:38 AM



#28 Decachlorobiphenyl

R.T.: 9.026 min
Delta R.T.: -0.006 min
Response: 30214868
Conc: 2.62 ng/ml m