

Data Path : Z:\pestpcbsrv\HPCHEM1\ECD\_D\Data\PD061021\  
 Data File : PD063726.D  
 Signal(s) : Signal #1: ECD1A.ch Signal #2: ECD2B.ch  
 Acq On : 10 Jun 2021 13:40  
 Operator : AR\AJ  
 Sample : PB136906BS  
 Misc :  
 ALS Vial : 13 Sample Multiplier: 1

Instrument :  
 ECD\_D  
 ClientSampleId :  
 PLCS906

Integration File signal 1: autoint1.e  
 Integration File signal 2: autoint2.e  
 Quant Time: Jun 11 04:00:56 2021  
 Quant Method : Z:\pestpcbsrv\HPCHEM1\ECD\_D\Method\PD060321CLP.M  
 Quant Title : GC Extractables  
 QLast Update : Thu Jun 03 06:08:10 2021  
 Response via : Initial Calibration  
 Integrator: ChemStation

Volume Inj. : 1 µl  
 Signal #1 Phase : ZB-MR2 Signal #2 Phase: ZB-MR1  
 Signal #1 Info : 30M x 0.32mm x0.2 Signal #2 Info : 30M x 0.32mm x 0.50µm

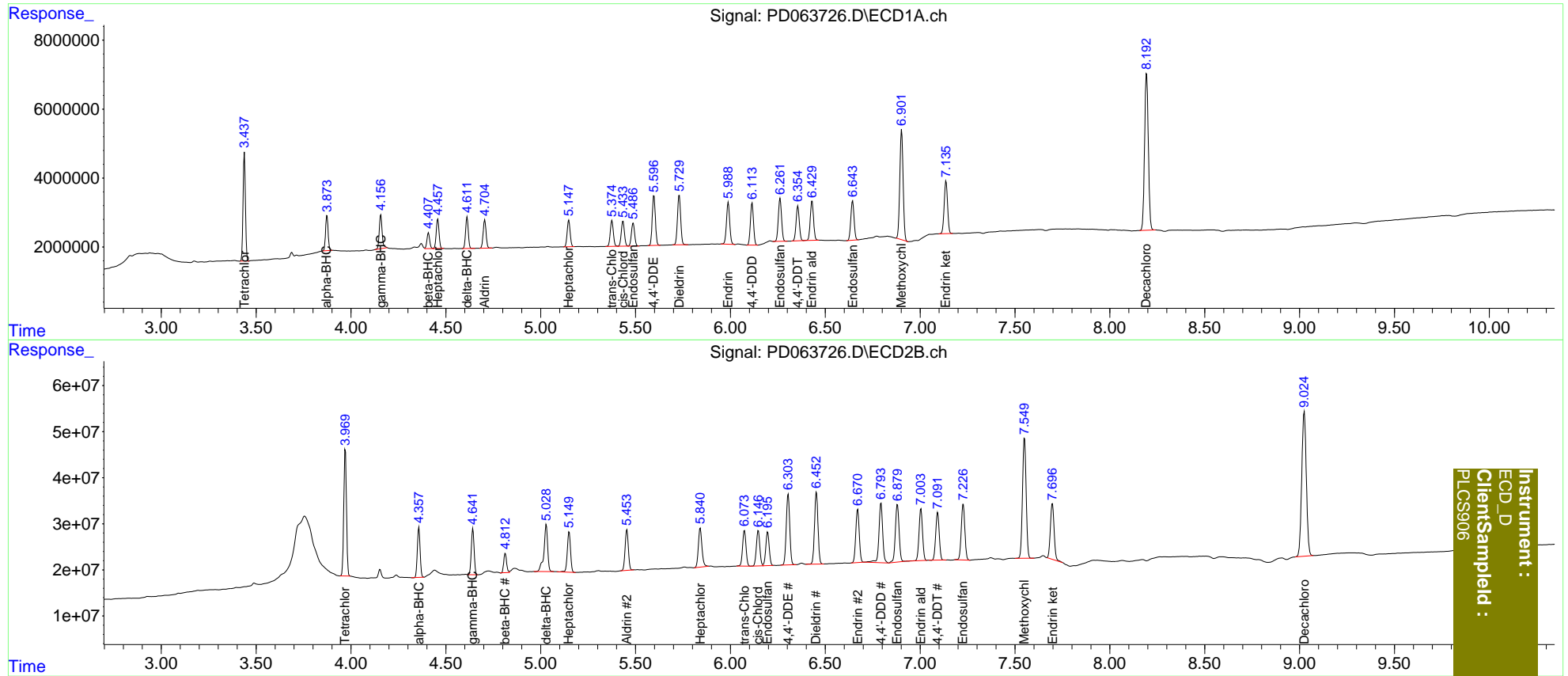
Compound	RT#1	RT#2	Resp#1	Resp#2	ng/ml	ng/ml
-----						
System Monitoring Compounds						
1) SA Tetrachlo...	3.438	3.970	27378027	272.6E6	19.946	19.365
27) SA Decachlor...	8.194	9.025	62486882	527.4E6	38.461	35.943
Target Compounds						
2) A alpha-BHC	3.874	4.358	9611413	109.6E6	4.707	4.959
3) MA gamma-BHC...	4.158	4.643	10353520	102.6E6	5.143	5.022
4) MA Heptachlor	4.458	5.150	8861187	103.2E6	4.554	4.967
5) MB Aldrin	4.706	5.455	8781535	105.2E6	4.675	5.112
6) B beta-BHC	4.409	4.814	4628290	43250103	4.975	4.835
7) B delta-BHC	4.612	5.030	8932585	140.4E6	4.577	6.365 #
8) B Heptachlo...	5.149	5.841	8381039	111.3E6	4.764	5.594
9) A Endosulfan I	5.488	6.197	7836912	91192782	4.767	5.106
10) B trans-Chl...	5.376	6.074	8550916	97525661	4.678	4.894
11) B cis-Chlor...	5.434	6.147	8411153	96608746	4.742	5.111
12) B 4,4'-DDE	5.597	6.305	16609387	195.9E6	9.198	10.353
13) MA Dieldrin	5.731	6.454	16933677	198.2E6	9.040	10.361
14) MA Endrin	5.989	6.671	14365983	146.8E6	8.889	9.269
15) B Endosulfa...	6.262	6.880	14768926	172.0E6	9.834	11.361
16) A 4,4'-DDD	6.115	6.794	13873048	177.7E6	9.388	11.697
17) MA 4,4'-DDT	6.355	7.093	11846710	133.1E6	7.803	8.660
18) B Endrin al...	6.431	7.005	13691437	144.1E6	10.507	10.920
19) B Endosulfa...	6.645	7.227	13596240	161.6E6	9.468	10.372
20) A Methoxychlor	6.903	7.550	38589400	347.8E6	46.763	48.210
21) B Endrin ke...	7.137	7.697	18779172	164.6E6	10.646	10.681

(f)=RT Delta > 1/2 Window (#)=Amounts differ by > 25% (m)=manual int.

Data Path : Z:\pestpcbsrv\HPCHEM1\ECD\_D\Data\PD061021\  
 Data File : PD063726.D  
 Signal(s) : Signal #1: ECD1A.ch Signal #2: ECD2B.ch  
 Acq On : 10 Jun 2021 13:40  
 Operator : AR\AJ  
 Sample : PB136906BS  
 Misc :  
 ALS Vial : 13 Sample Multiplier: 1

Integration File signal 1: autoint1.e  
 Integration File signal 2: autoint2.e  
 Quant Time: Jun 11 04:00:56 2021  
 Quant Method : Z:\pestpcbsrv\HPCHEM1\ECD\_D\Method\PD060321CLP.M  
 Quant Title : GC Extractables  
 QLast Update : Thu Jun 03 06:08:10 2021  
 Response via : Initial Calibration  
 Integrator: ChemStation

Volume Inj. : 1 µl  
 Signal #1 Phase : ZB-MR2 Signal #2 Phase: ZB-MR1  
 Signal #1 Info : 30M x 0.32mm x0.2 Signal #2 Info : 30M x 0.32mm x 0.50µm



Instrument :  
 ECD\_D  
 ClientSampleId :  
 PLCS906