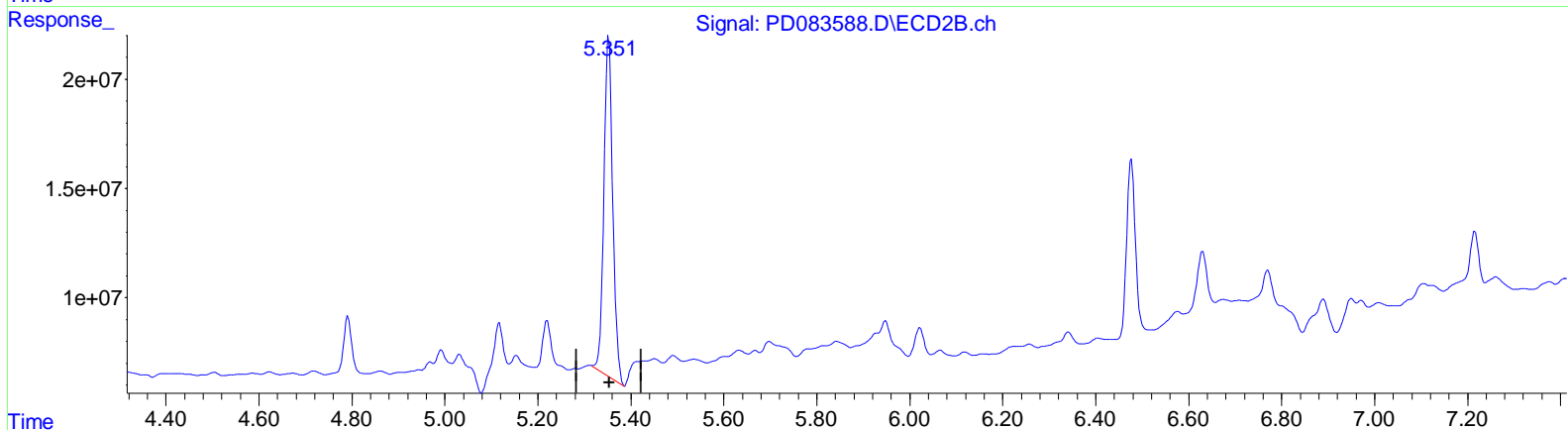
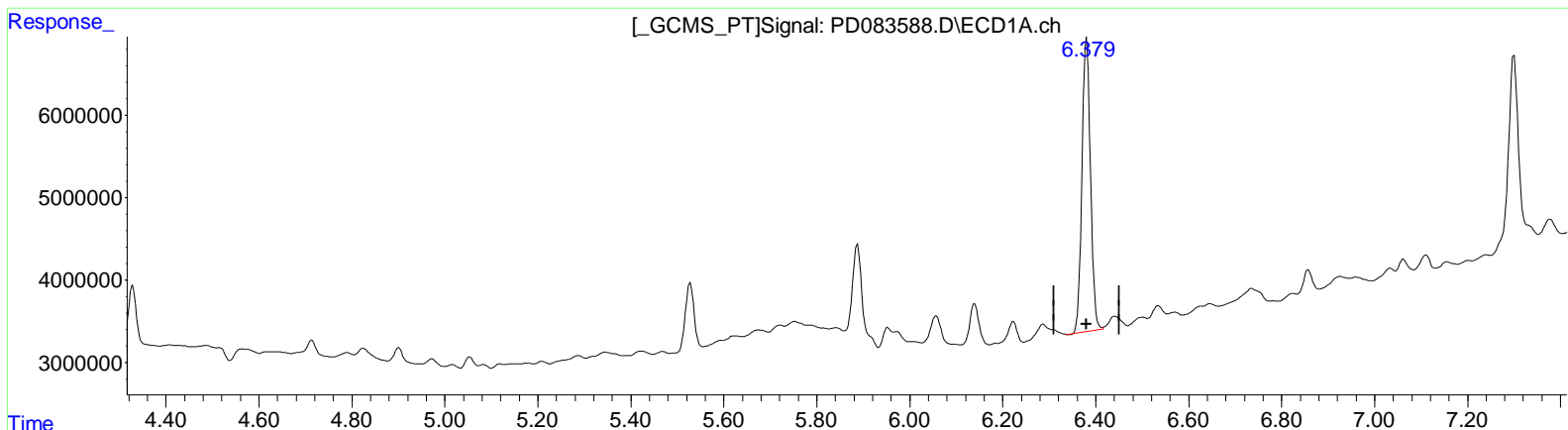


Data Path : Z:\pestpcbsrv\HPCHEM1\ECD\_D\Data\PD061024\  
 Data File : PD083588.D  
 Signal(s) : Signal #1: ECD1A.ch Signal #2: ECD2B.ch  
 Acq On : 10 Jun 2024 17:06  
 Operator : ARVAJ  
 Sample : P2648-16  
 Misc :  
 ALS Vial : 17 Sample Multiplier: 1

Integration File signal 1: autoint1.e  
 Integration File signal 2: autoint2.e  
 Quant Time: Jun 11 04:59:00 2024  
 Quant Method : Z:\pestpcbsrv\HPCHEM1\ECD\_D\Method\PD060724CLP.M  
 Quant Title : GC Extractables  
 QLast Update : Fri Jun 07 04:03:14 2024  
 Response via : Initial Calibration  
 Integrator: ChemStation

Volume Inj. : 1 µl  
 Signal #1 Phase : ZB-MR1 Signal #2 Phase: ZB-MR2  
 Signal #1 Info : 30M x 0.32mm x 0.5 Signal #2 Info : 30M x 0.32mm x 0.25µm



QEdit

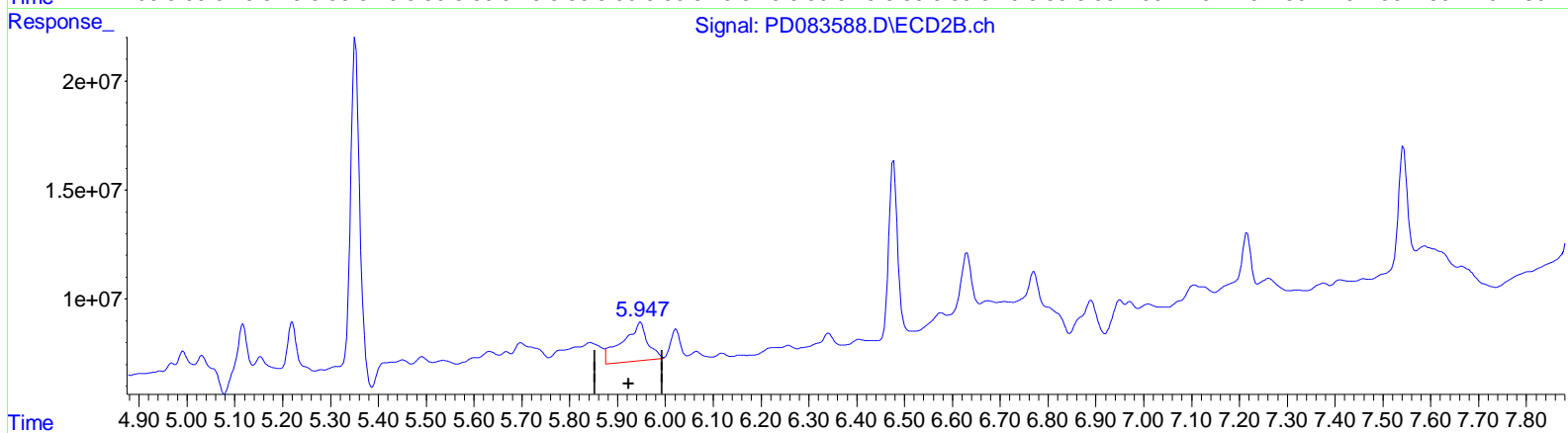
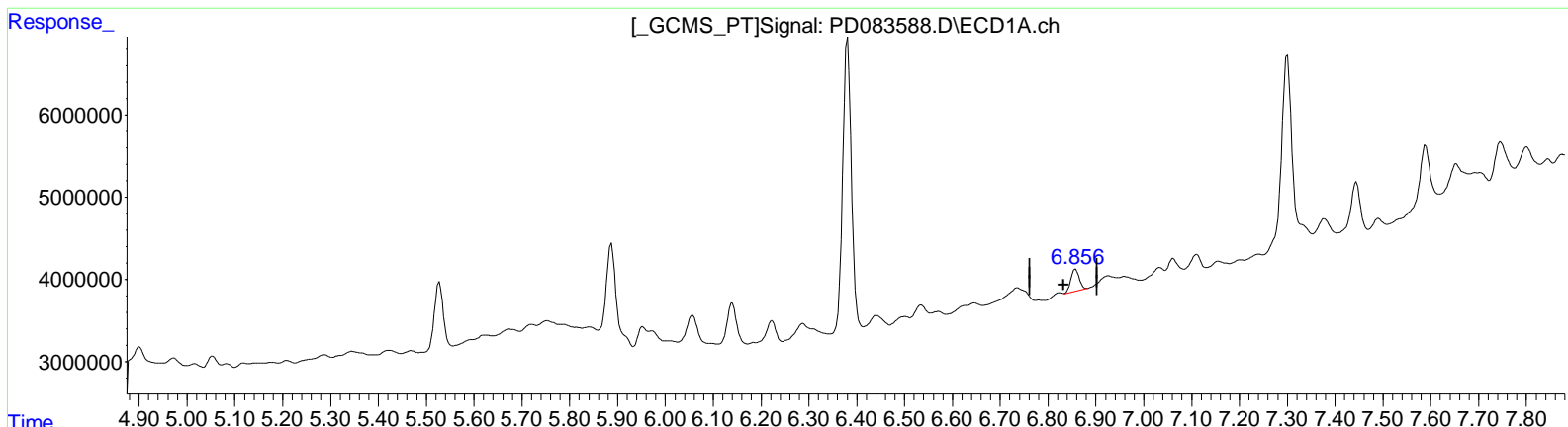
(13) Dieldrin (MA)  
 6.381min 21.812 ng/ml  
 response 45099825

(13) Dieldrin #2 (MA)  
 5.351min 28.233 ng/ml m  
 response 205683940

Data Path : Z:\pestpcbsrv\HPCHEM1\ECD\_D\Data\PD061024\  
 Data File : PD083588.D  
 Signal(s) : Signal #1: ECD1A.ch Signal #2: ECD2B.ch  
 Acq On : 10 Jun 2024 17:06  
 Operator : ARVAJ  
 Sample : P2648-16  
 Misc :  
 ALS Vial : 17 Sample Multiplier: 1

Integration File signal 1: autoint1.e  
 Integration File signal 2: autoint2.e  
 Quant Time: Jun 11 04:59:00 2024  
 Quant Method : Z:\pestpcbsrv\HPCHEM1\ECD\_D\Method\PD060724CLP.M  
 Quant Title : GC Extractables  
 QLast Update : Fri Jun 07 04:03:14 2024  
 Response via : Initial Calibration  
 Integrator: ChemStation

Volume Inj. : 1 µl  
 Signal #1 Phase : ZB-MR1 Signal #2 Phase: ZB-MR2  
 Signal #1 Info : 30M x 0.32mm x0.5 Signal #2 Info : 30M x 0.32mm x 0.25µm



QEdit

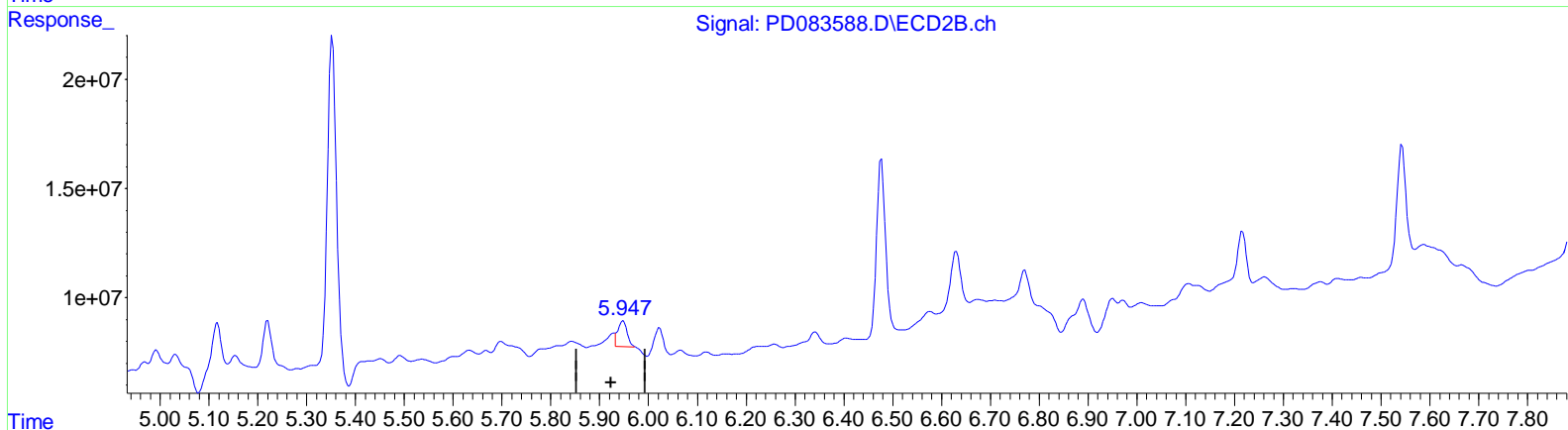
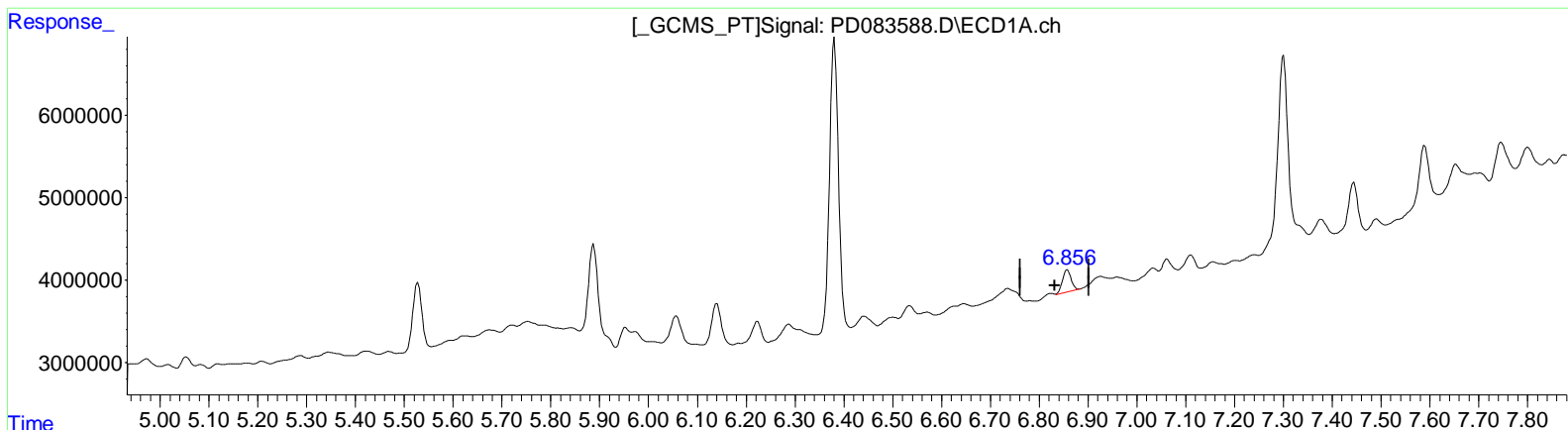
(15) Endosulfan II (B)  
 6.858min 1.889 ng/ml  
 response 3396969

(15) Endosulfan II #2 (B)  
 5.948min 10.299 ng/ml  
 response 65353120

Data Path : Z:\pestpcbsrv\HPCHEM1\ECD\_D\Data\PD061024\  
 Data File : PD083588.D  
 Signal(s) : Signal #1: ECD1A.ch Signal #2: ECD2B.ch  
 Acq On : 10 Jun 2024 17:06  
 Operator : ARVAJ  
 Sample : P2648-16  
 Misc :  
 ALS Vial : 17 Sample Multiplier: 1

Integration File signal 1: autoint1.e  
 Integration File signal 2: autoint2.e  
 Quant Time: Jun 11 04:59:00 2024  
 Quant Method : Z:\pestpcbsrv\HPCHEM1\ECD\_D\Method\PD060724CLP.M  
 Quant Title : GC Extractables  
 QLast Update : Fri Jun 07 04:03:14 2024  
 Response via : Initial Calibration  
 Integrator: ChemStation

Volume Inj. : 1 µl  
 Signal #1 Phase : ZB-MR1 Signal #2 Phase: ZB-MR2  
 Signal #1 Info : 30M x 0.32mm x0.5 Signal #2 Info : 30M x 0.32mm x 0.25µm



QEdit

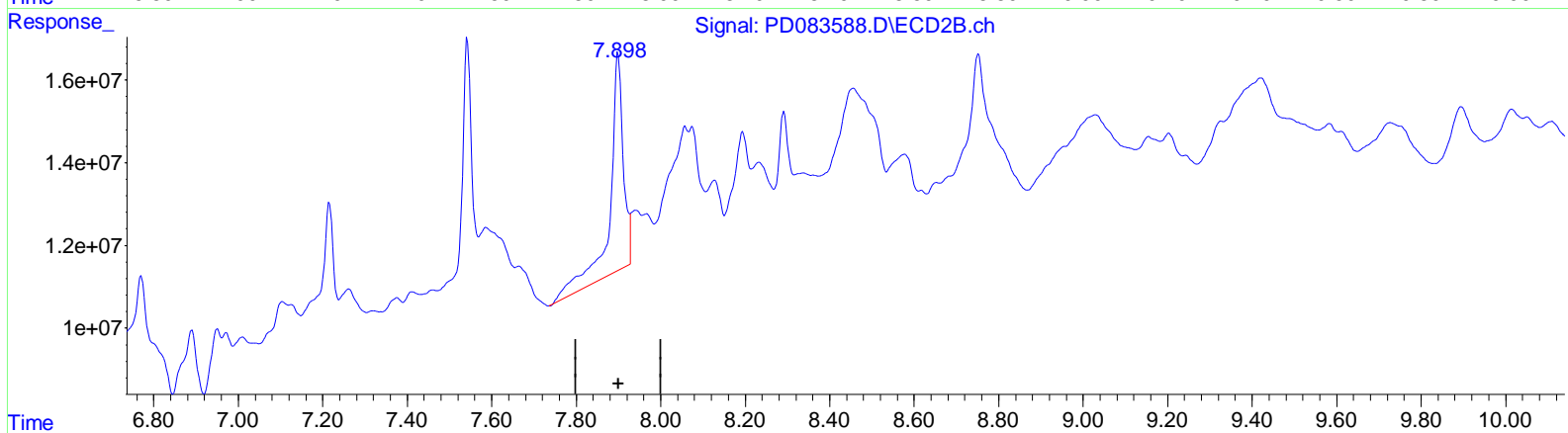
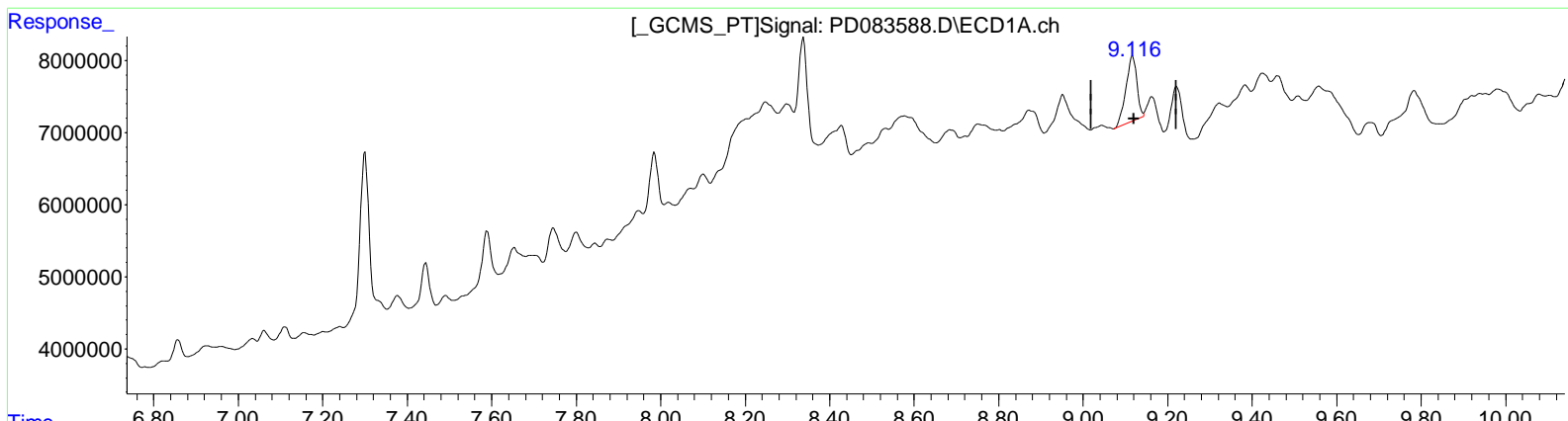
(15) Endosulfan II (B)  
 6.858min 1.889 ng/ml  
 response 3396969

(15) Endosulfan II #2 (B)  
 5.947min 2.417 ng/ml m  
 response 15336499

Data Path : Z:\pestpcbsrv\HPCHEM1\ECD\_D\Data\PD061024\  
 Data File : PD083588.D  
 Signal(s) : Signal #1: ECD1A.ch Signal #2: ECD2B.ch  
 Acq On : 10 Jun 2024 17:06  
 Operator : ARVAJ  
 Sample : P2648-16  
 Misc :  
 ALS Vial : 17 Sample Multiplier: 1

Integration File signal 1: autoint1.e  
 Integration File signal 2: autoint2.e  
 Quant Time: Jun 11 04:59:00 2024  
 Quant Method : Z:\pestpcbsrv\HPCHEM1\ECD\_D\Method\PD060724CLP.M  
 Quant Title : GC Extractables  
 QLast Update : Fri Jun 07 04:03:14 2024  
 Response via : Initial Calibration  
 Integrator: ChemStation

Volume Inj. : 1 µl  
 Signal #1 Phase : ZB-MR1 Signal #2 Phase: ZB-MR2  
 Signal #1 Info : 30M x 0.32mm x 0.5 Signal #2 Info : 30M x 0.32mm x 0.25µm



QEdit

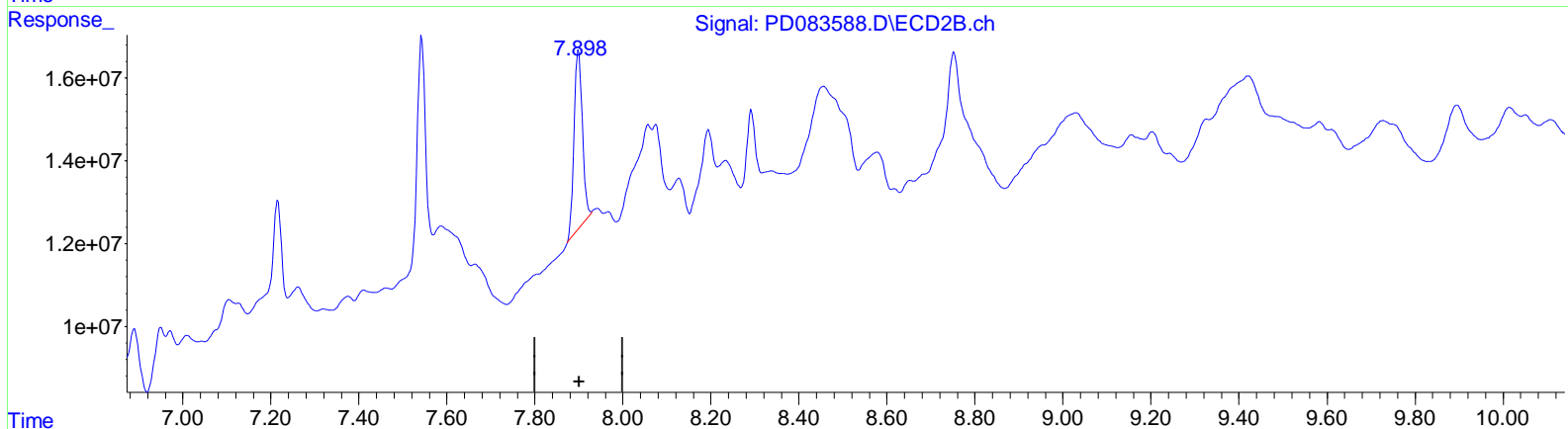
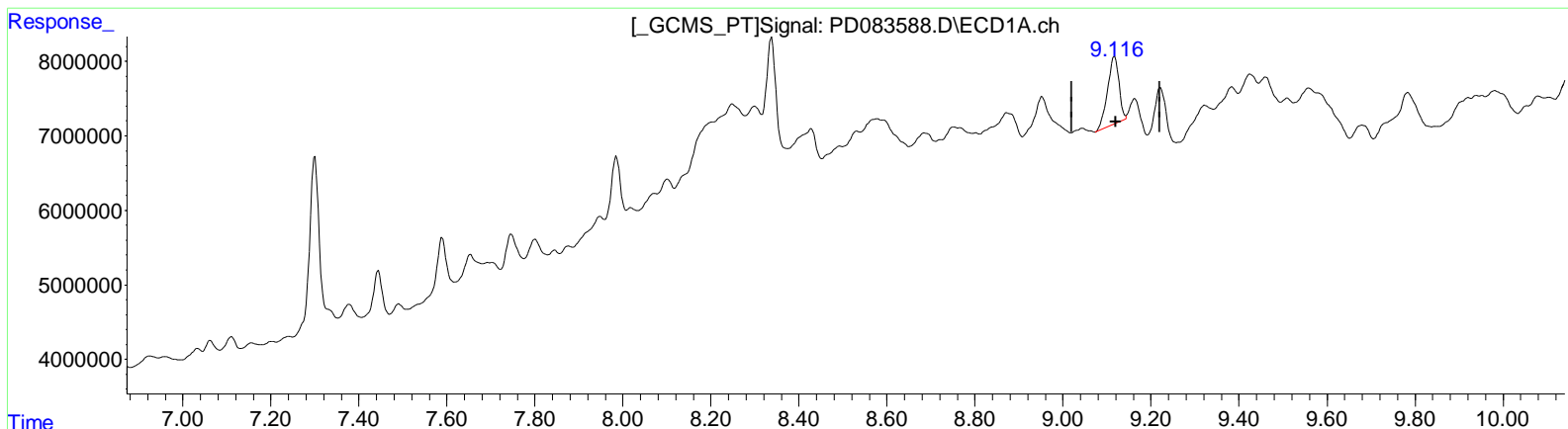
(27) Decachlorobiphenyl (SA)  
 9.117min 8.266 ng/ml  
 response 16073461

(27) Decachlorobiphenyl #2 (SA)  
 7.899min 19.295 ng/ml  
 response 117162691

Data Path : Z:\pestpcbsrv\HPCHEM1\ECD\_D\Data\PD061024\  
 Data File : PD083588.D  
 Signal(s) : Signal #1: ECD1A.ch Signal #2: ECD2B.ch  
 Acq On : 10 Jun 2024 17:06  
 Operator : ARVAJ  
 Sample : P2648-16  
 Misc :  
 ALS Vial : 17 Sample Multiplier: 1

Integration File signal 1: autoint1.e  
 Integration File signal 2: autoint2.e  
 Quant Time: Jun 11 04:59:00 2024  
 Quant Method : Z:\pestpcbsrv\HPCHEM1\ECD\_D\Method\PD060724CLP.M  
 Quant Title : GC Extractables  
 QLast Update : Fri Jun 07 04:03:14 2024  
 Response via : Initial Calibration  
 Integrator: ChemStation

Volume Inj. : 1 µl  
 Signal #1 Phase : ZB-MR1 Signal #2 Phase: ZB-MR2  
 Signal #1 Info : 30M x 0.32mm x 0.5 Signal #2 Info : 30M x 0.32mm x 0.25µm



QEdit

(27) Decachlorobiphenyl (SA)

9.117min 8.266 ng/ml

response 16073461

(27) Decachlorobiphenyl #2 (SA)

7.898min 9.432 ng/ml m

response 57269860