

Data Path : Z:\pestpcbsrv\HPCHEM1\ECD_D\Data\PD061423\
 Data File : PD075782.D
 Signal(s) : Signal #1: ECD1A.ch Signal #2: ECD2B.ch
 Acq On : 14 Jun 2023 08:23
 Operator : AR\AJ
 Sample : HEXANE
 Misc :
 ALS Vial : 1 Sample Multiplier: 1

Integration File signal 1: autoint1.e
 Integration File signal 2: autoint2.e
 Quant Time: Jun 14 22:12:46 2023
 Quant Method : Z:\pestpcbsrv\HPCHEM1\ECD_D\Method\PD060223CLP.M
 Quant Title : GC Extractables
 QLast Update : Fri Jun 02 04:01:43 2023
 Response via : Initial Calibration
 Integrator: ChemStation

Volume Inj. : 1 µl
 Signal #1 Phase : ZB-MR1 Signal #2 Phase: ZB-MR2
 Signal #1 Info : 30M x 0.32mm x0.5 Signal #2 Info : 30M x 0.32mm x 0.25µm

Compound	RT#1	RT#2	Resp#1	Resp#2	ng/ml	ng/ml

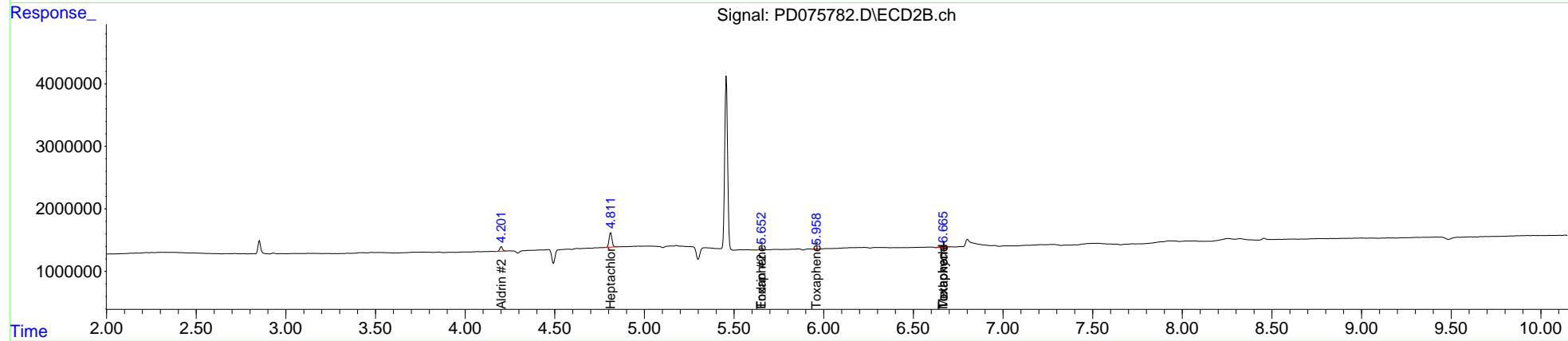
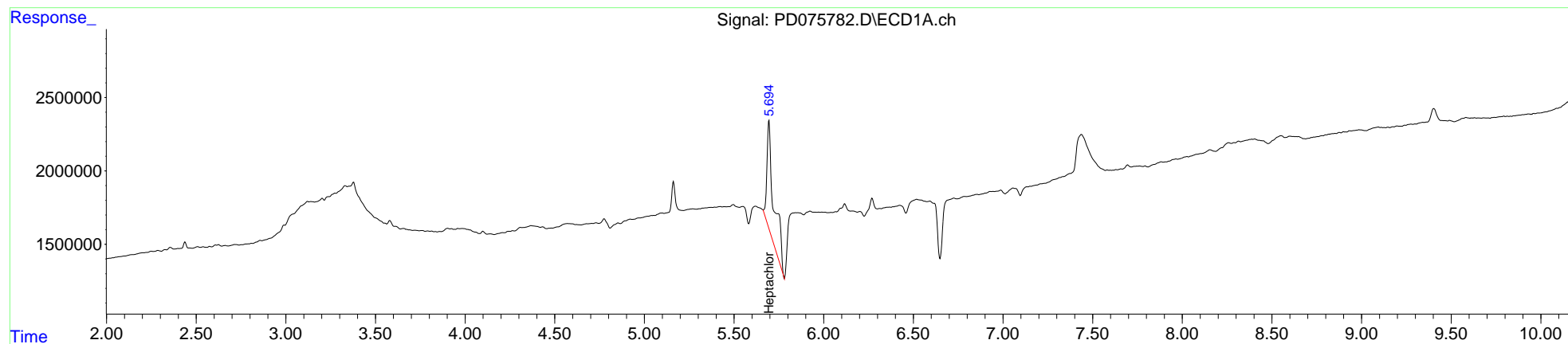
System Monitoring Compounds						
27) SA Decachlor...	0.000	7.926	0	18740	N.D.	<MDL
Target Compounds						
5) MB Aldrin	0.000	4.202f	0	780533	N.D.	0.552
8) B Heptachlo...	5.695	4.812f	19755193	2599832	6.463	1.976 #
14) MA Endrin	0.000	5.653	0	354948	N.D.	0.309
15) B Endosulfa...	0.000	5.961	0	58903	N.D.	<MDL
20) A Methoxychlor	0.000	6.668f	0	279526	N.D.	0.579
23) Toxaphene-2	0.000	5.653	0	354948	N.D.	50.168
24) Toxaphene-3	0.000	5.961	0	58903	N.D.	6.974
25) Toxaphene-4	0.000	6.668f	0	279526	N.D.	13.525
26) Toxaphene-5	0.000	6.668f	0	279526	N.D.	8.633

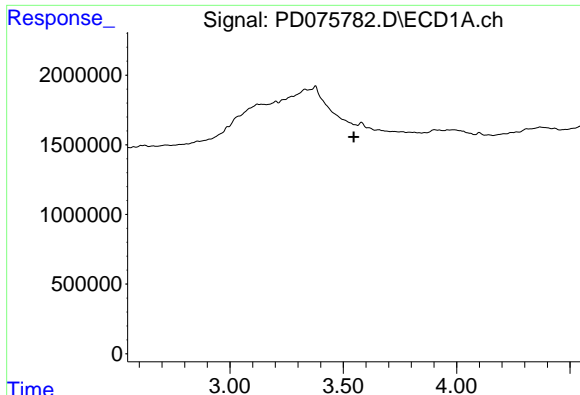
(f)=RT Delta > 1/2 Window (#)=Amounts differ by > 25% (m)=manual int.

Data Path : Z:\pestpcbsrv\HPCHEM1\ECD_D\Data\PD061423\
 Data File : PD075782.D
 Signal(s) : Signal #1: ECD1A.ch Signal #2: ECD2B.ch
 Acq On : 14 Jun 2023 08:23
 Operator : AR\AJ
 Sample : HEXANE
 Misc :
 ALS Vial : 1 Sample Multiplier: 1

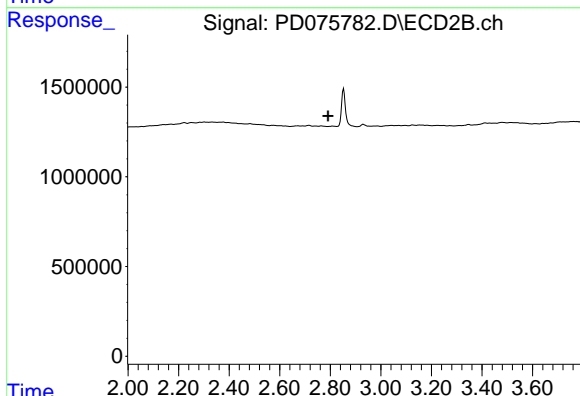
Integration File signal 1: autoint1.e
 Integration File signal 2: autoint2.e
 Quant Time: Jun 14 22:12:46 2023
 Quant Method : Z:\pestpcbsrv\HPCHEM1\ECD_D\Method\PD060223CLP.M
 Quant Title : GC Extractables
 QLast Update : Fri Jun 02 04:01:43 2023
 Response via : Initial Calibration
 Integrator: ChemStation

Volume Inj. : 1 µl
 Signal #1 Phase : ZB-MR1 Signal #2 Phase: ZB-MR2
 Signal #1 Info : 30M x 0.32mm x 0.5 Signal #2 Info : 30M x 0.32mm x 0.25µm

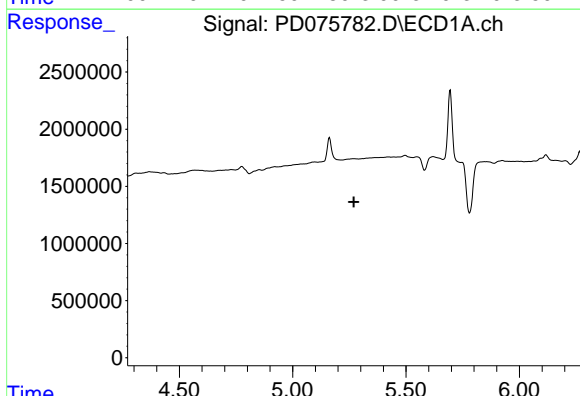




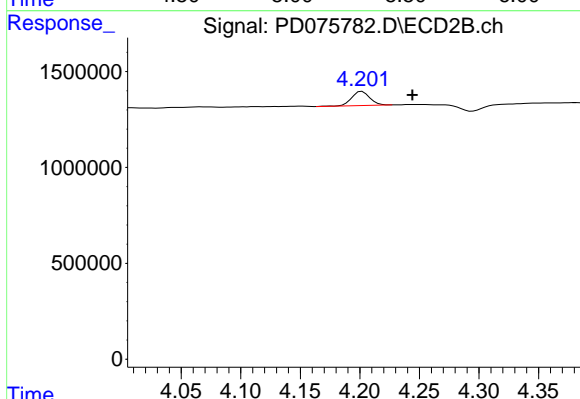
#1 Tetrachloro-m-xylene
 R.T.: 0.000 min
 Exp R.T. : 3.546 min
 Response: 0
 Conc: N.D.



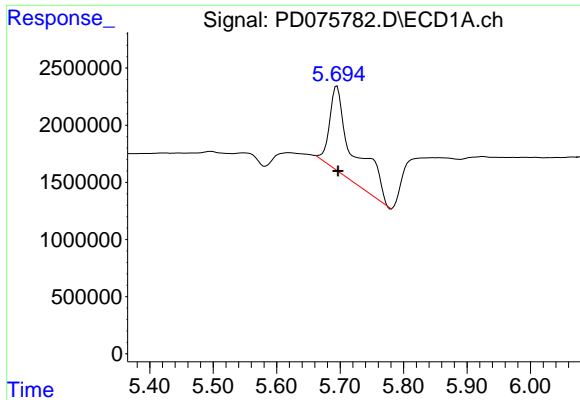
#1 Tetrachloro-m-xylene
 R.T.: 0.000 min
 Exp R.T. : 2.791 min
 Response: 0
 Conc: N.D.



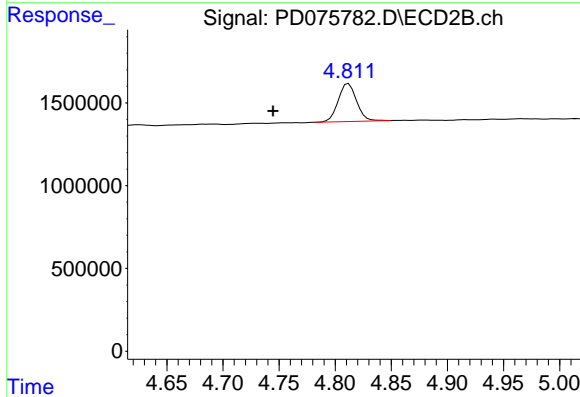
#5 Aldrin
 R.T.: 0.000 min
 Exp R.T. : 5.269 min
 Response: 0
 Conc: N.D.



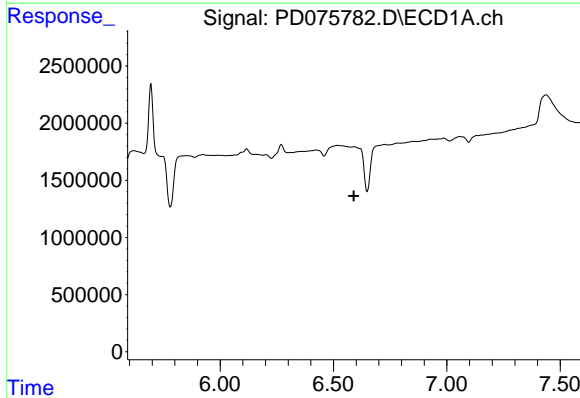
#5 Aldrin
 R.T.: 4.202 min
 Delta R.T.: -0.042 min
 Response: 780533
 Conc: 0.55 ng/ml



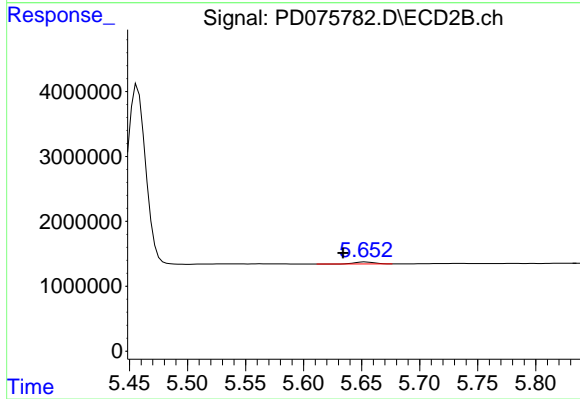
#8 Heptachlor epoxide
 R.T.: 5.695 min
 Delta R.T.: -0.002 min
 Response: 19755193
 Conc: 6.46 ng/ml



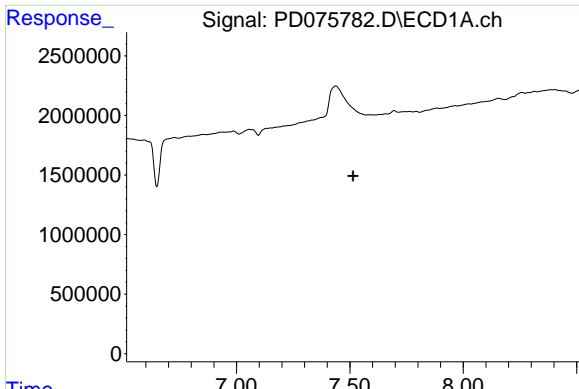
#8 Heptachlor epoxide
 R.T.: 4.812 min
 Delta R.T.: 0.067 min
 Response: 2599832
 Conc: 1.98 ng/ml



#14 Endrin
 R.T.: 0.000 min
 Exp R.T. : 6.590 min
 Response: 0
 Conc: N.D.

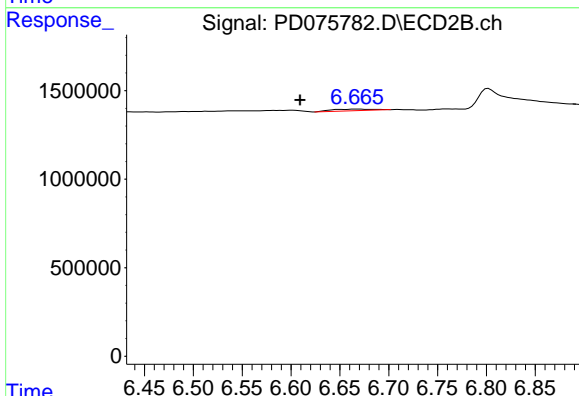


#14 Endrin
 R.T.: 5.653 min
 Delta R.T.: 0.019 min
 Response: 354948
 Conc: 0.31 ng/ml



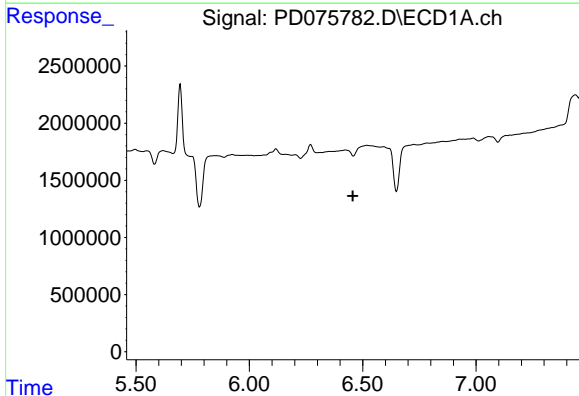
#20 Methoxychlor

R.T.: 0.000 min
 Exp R.T. : 7.514 min
 Response: 0
 Conc: N.D.



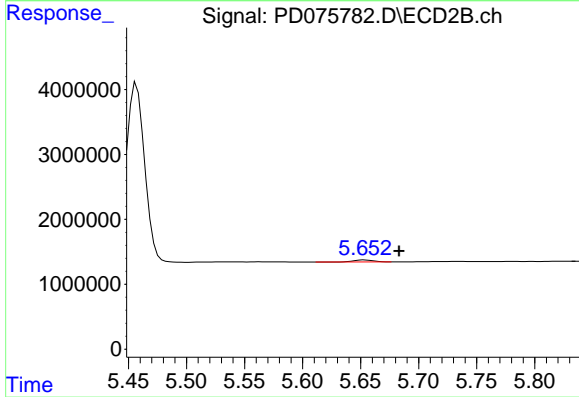
#20 Methoxychlor

R.T.: 6.668 min
 Delta R.T.: 0.059 min
 Response: 279526
 Conc: 0.58 ng/ml



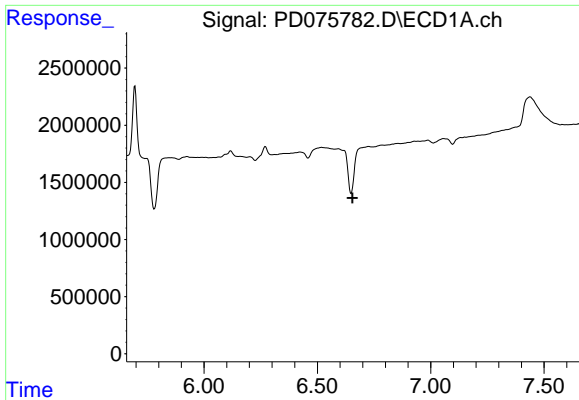
#23 Toxaphene-2

R.T.: 0.000 min
 Exp R.T. : 6.457 min
 Response: 0
 Conc: N.D.



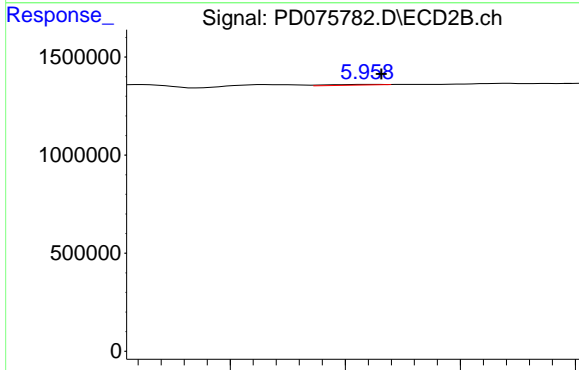
#23 Toxaphene-2

R.T.: 5.653 min
 Delta R.T.: -0.030 min
 Response: 354948
 Conc: 50.17 ng/ml



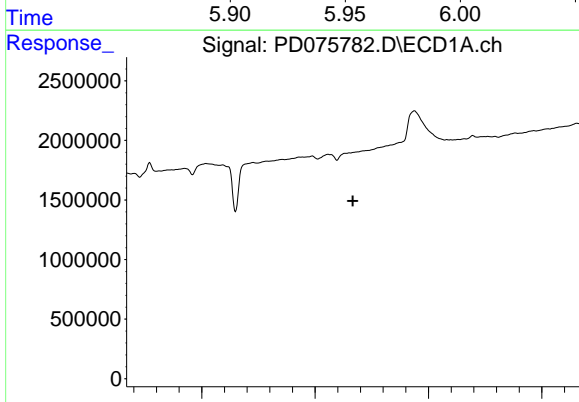
#24 Toxaphene-3

R.T.: 0.000 min
 Exp R.T. : 6.656 min
 Response: 0
 Conc: N.D.



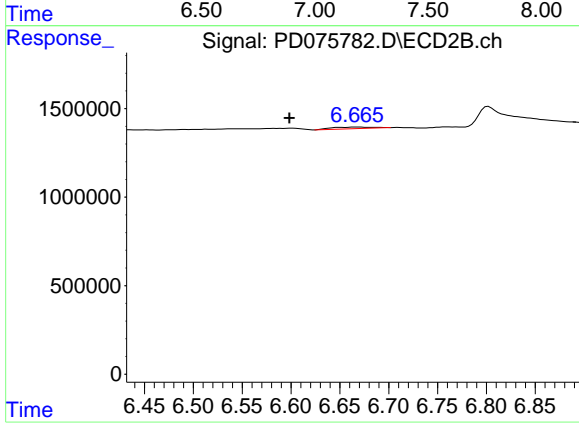
#24 Toxaphene-3

R.T.: 5.961 min
 Delta R.T.: -0.005 min
 Response: 58903
 Conc: 6.97 ng/ml



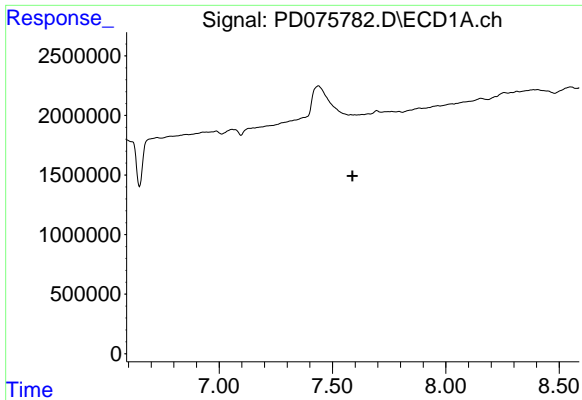
#25 Toxaphene-4

R.T.: 0.000 min
 Exp R.T. : 7.166 min
 Response: 0
 Conc: N.D.



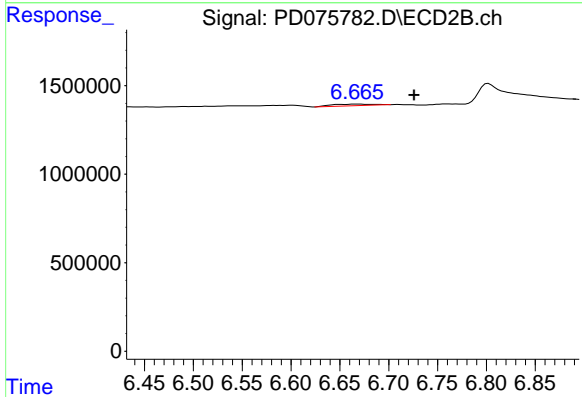
#25 Toxaphene-4

R.T.: 6.668 min
 Delta R.T.: 0.069 min
 Response: 279526
 Conc: 13.52 ng/ml



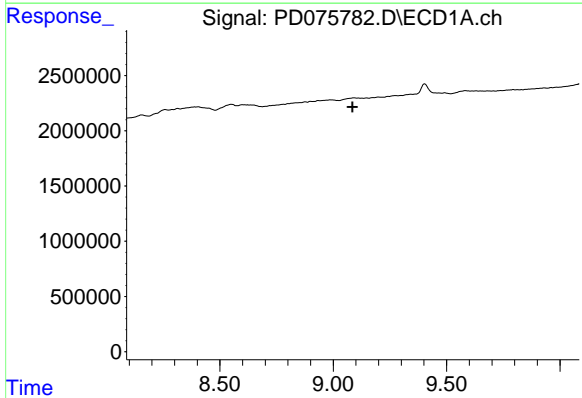
#26 Toxaphene-5

R.T.: 0.000 min
 Exp R.T. : 7.589 min
 Response: 0
 Conc: N.D.



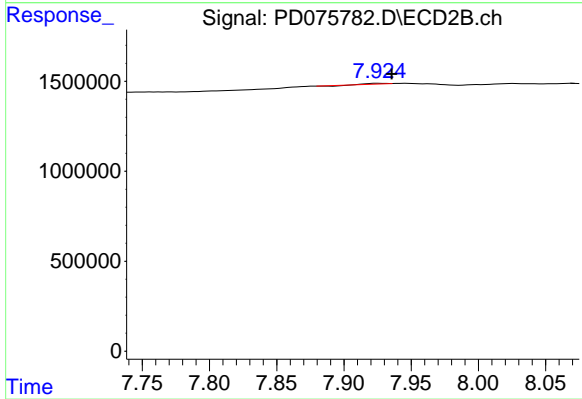
#26 Toxaphene-5

R.T.: 6.668 min
 Delta R.T.: -0.058 min
 Response: 279526
 Conc: 8.63 ng/ml



#27 Decachlorobiphenyl

R.T.: 0.000 min
 Exp R.T. : 9.085 min
 Response: 0
 Conc: N.D.



#27 Decachlorobiphenyl

R.T.: 7.926 min
 Delta R.T.: -0.010 min
 Response: 18740
 Conc: N.D.