

Data Path : Z:\pestpcbsrv\HPCHEM1\ECD_D\Data\PD061622\
 Data File : PD070362.D
 Signal(s) : Signal #1: ECD1A.ch Signal #2: ECD2B.ch
 Acq On : 16 Jun 2022 20:24
 Operator : AR\AJ
 Sample : N3358-10
 Misc :
 ALS Vial : 13 Sample Multiplier: 1

Instrument :
 ECD_D
 ClientSampleId :

Integration File signal 1: autoint1.e
 Integration File signal 2: autoint2.e
 Quant Time: Jun 17 01:47:08 2022
 Quant Method : Z:\pestpcbsrv\HPCHEM1\ECD_D\Method\PD061422CLP.M
 Quant Title : GC Extractables
 QLast Update : Tue Jun 14 16:58:30 2022
 Response via : Initial Calibration
 Integrator: ChemStation

Volume Inj. : 1 µl
 Signal #1 Phase : ZB-MR2 Signal #2 Phase: ZB-MR1
 Signal #1 Info : 30M x 0.32mm x0.2 Signal #2 Info : 30M x 0.32mm x 0.50µm

	Compound	RT#1	RT#2	Resp#1	Resp#2	ng/ml	ng/ml

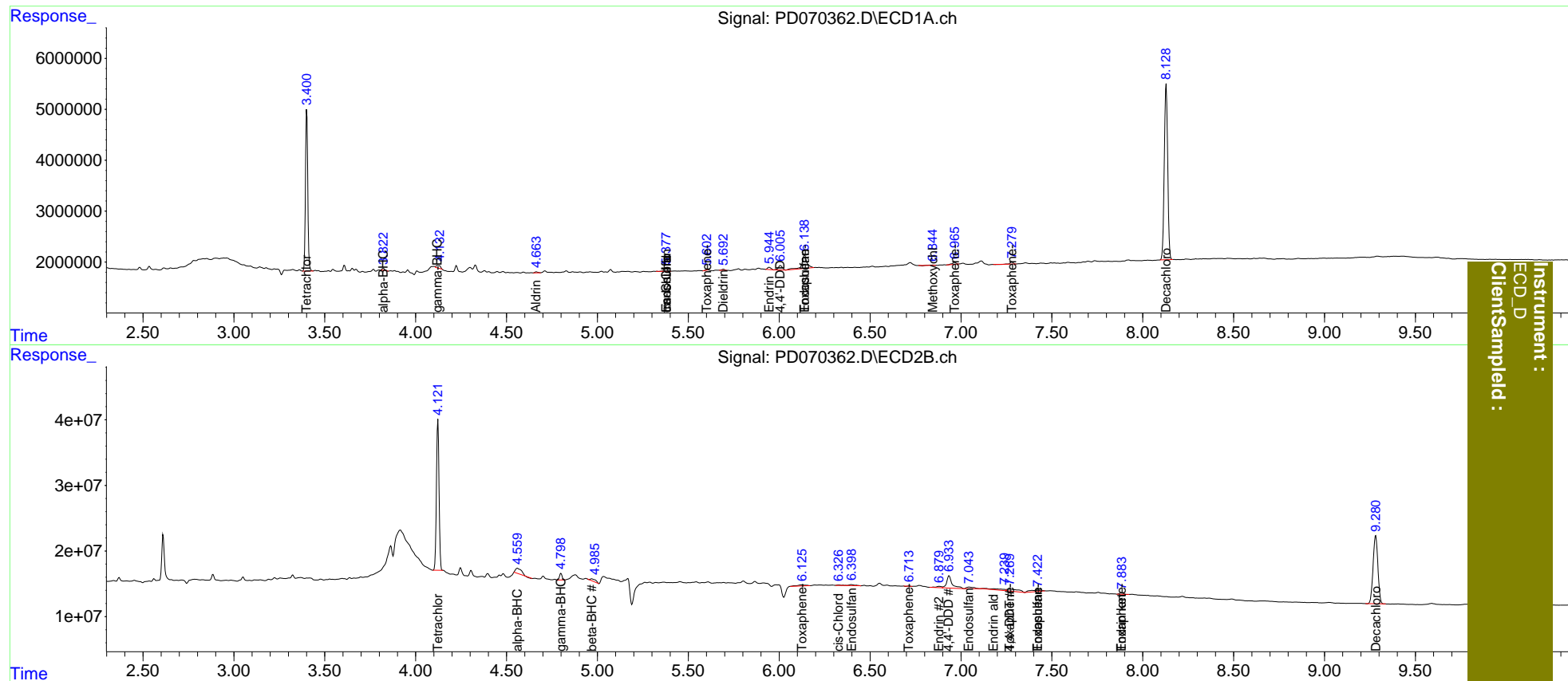
System Monitoring Compounds							
1)	SA Tetrachlo...	3.401	4.123	27869777	229.3E6	19.216	16.977
27)	SA Decachlor...	8.129	9.282	44819868	190.6E6	27.983	26.404
Target Compounds							
2)	A alpha-BHC	3.822	4.560f	346718	18141693	0.164	0.927 #
3)	MA gamma-BHC...	4.120	4.800	839729	9790772	0.418	0.537 #
4)	MA Heptachlor	4.379f	0.000	80861	0	<MDL	N.D. #
5)	MB Aldrin	4.664	0.000	205029	0	0.107	N.D. #
6)	B beta-BHC	4.379	4.969	80861	7415312	<MDL	0.937 #
7)	B delta-BHC	4.593f	0.000	151962	0	<MDL	N.D. #
9)	A Endosulfan I	5.378f	6.398	726718	3607050	0.432	0.267 #
10)	B trans-Chl...	5.378f	6.293	726718	431745	0.404	<MDL #
11)	B cis-Chlor...	5.378	6.328	726718	1477140	0.411	0.105 #
12)	B 4,4'-DDE	5.604f	6.501	102908	-142996	<MDL	N.D. #
13)	MA Dieldrin	5.693	6.592f	238324	1240385	0.126	<MDL #
14)	MA Endrin	5.945	6.881	609486	4314223	0.358	0.375
15)	B Endosulfa...	6.140f	7.045	5092975	6793311	3.139	0.618 #
16)	A 4,4'-DDD	6.007f	6.935f	1387755	39782111	0.917	3.603 #
17)	MA 4,4'-DDT	0.000	7.270	0	15381146	N.D.	1.496
18)	B Endrin al...	0.000	7.180	0	9790356	N.D.	1.164
19)	B Endosulfa...	6.587	7.423	119904	8841564	<MDL	0.894 #
20)	A Methoxychlor	6.845	7.713	86834	351219	0.103	<MDL #
21)	B Endrin ke...	7.083	7.885	-46983	3273983	N.D.	0.321
22)	Toxaphene-1	5.604	6.125	102908	5509819	9.520	173.152 #
23)	Toxaphene-2	6.140	6.714	5092975	248059	469.875	2.021 #
24)	Toxaphene-3	0.000	7.270f	0	15381146	N.D.	56.849
25)	Toxaphene-4	6.967	7.423	532759	8841564	16.385	55.153 #
26)	Toxaphene-5	7.281	7.885f	425403	3273983	81.293	30.054 #

(f)=RT Delta > 1/2 Window (#)=Amounts differ by > 25% (m)=manual int.

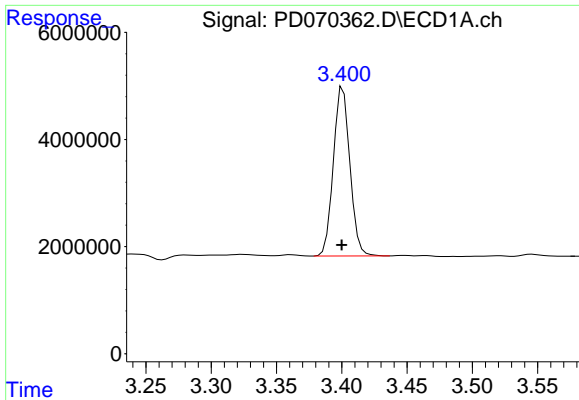
Data Path : Z:\pestpcbsrv\HPCHEM1\ECD_D\Data\PD061622\
 Data File : PD070362.D
 Signal(s) : Signal #1: ECD1A.ch Signal #2: ECD2B.ch
 Acq On : 16 Jun 2022 20:24
 Operator : AR\AJ
 Sample : N3358-10
 Misc :
 ALS Vial : 13 Sample Multiplier: 1

Integration File signal 1: autoint1.e
 Integration File signal 2: autoint2.e
 Quant Time: Jun 17 01:47:08 2022
 Quant Method : Z:\pestpcbsrv\HPCHEM1\ECD_D\Method\PD061422CLP.M
 Quant Title : GC Extractables
 QLast Update : Tue Jun 14 16:58:30 2022
 Response via : Initial Calibration
 Integrator: ChemStation

Volume Inj. : 1 µl
 Signal #1 Phase : ZB-MR2 Signal #2 Phase: ZB-MR1
 Signal #1 Info : 30M x 0.32mm x0.2 Signal #2 Info : 30M x 0.32mm x 0.50µm

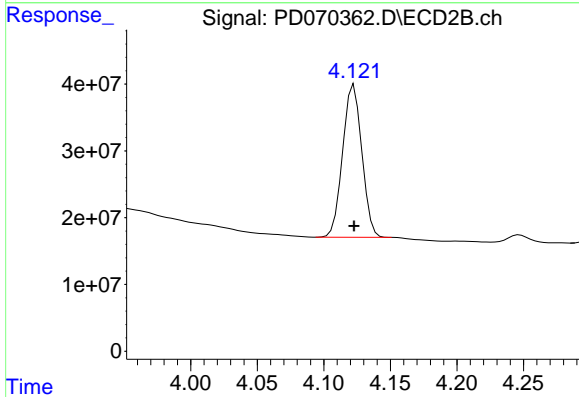


Instrument : ECD_D
 ClientSampled :

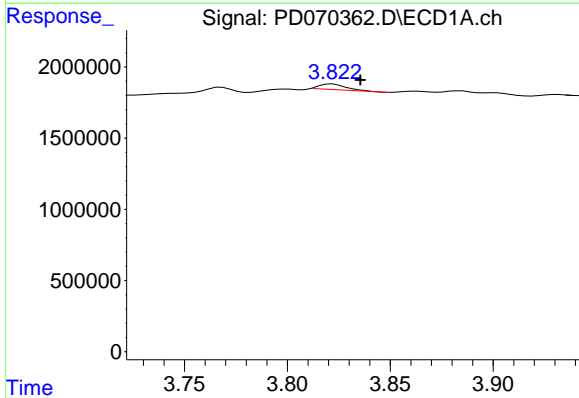


#1 Tetrachloro-m-xylene
 R.T.: 3.401 min
 Delta R.T.: 0.001 min
 Response: 27869777
 Conc: 19.22 ng/ml

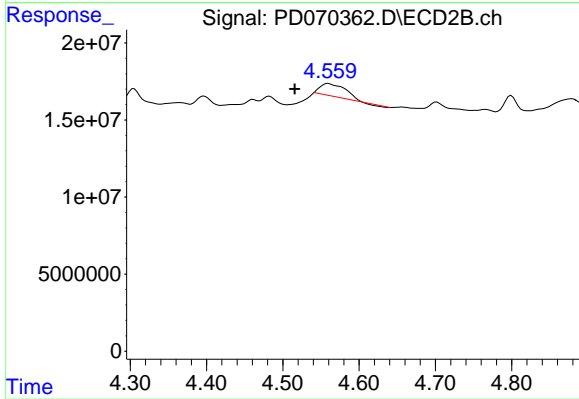
Instrument :
 ECD_D
 ClientSampleId :



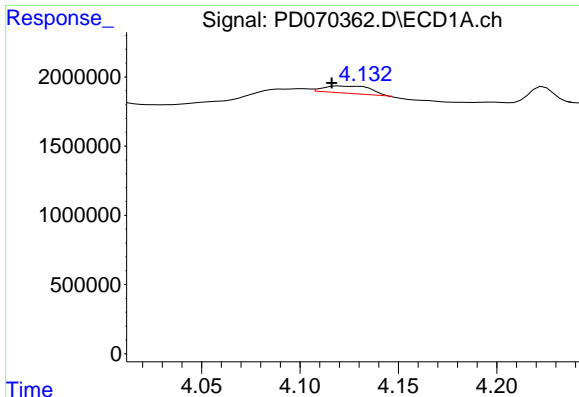
#1 Tetrachloro-m-xylene
 R.T.: 4.123 min
 Delta R.T.: 0.000 min
 Response: 229338542
 Conc: 16.98 ng/ml



#2 alpha-BHC
 R.T.: 3.822 min
 Delta R.T.: -0.013 min
 Response: 346718
 Conc: 0.16 ng/ml



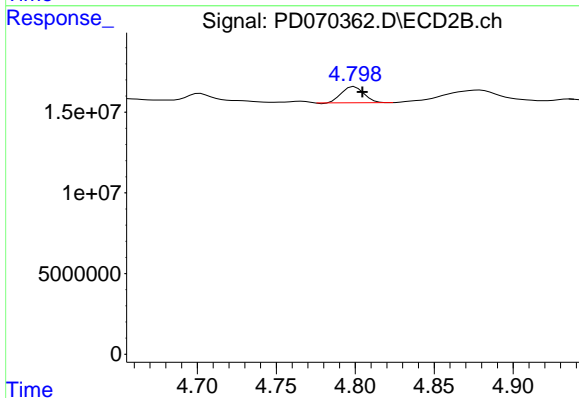
#2 alpha-BHC
 R.T.: 4.560 min
 Delta R.T.: 0.044 min
 Response: 18141693
 Conc: 0.93 ng/ml



#3 gamma-BHC (Lindane)

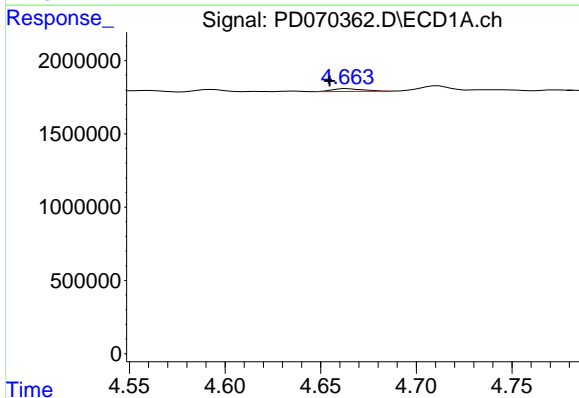
R.T.: 4.120 min
 Delta R.T.: 0.004 min
 Response: 839729
 Conc: 0.42 ng/ml

Instrument :
 ECD_D
 ClientSampleId :



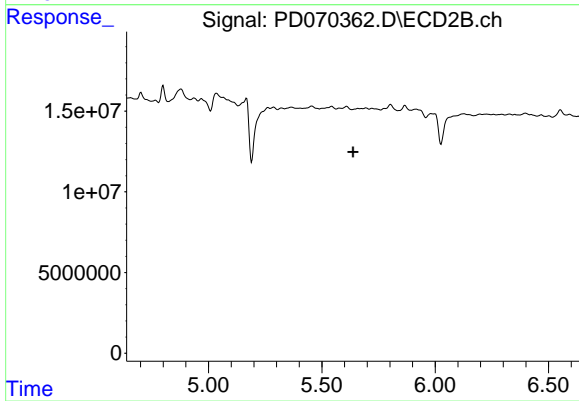
#3 gamma-BHC (Lindane)

R.T.: 4.800 min
 Delta R.T.: -0.005 min
 Response: 9790772
 Conc: 0.54 ng/ml



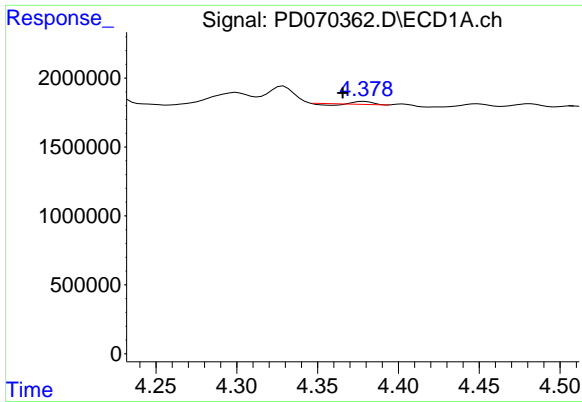
#5 Aldrin

R.T.: 4.664 min
 Delta R.T.: 0.009 min
 Response: 205029
 Conc: 0.11 ng/ml



#5 Aldrin

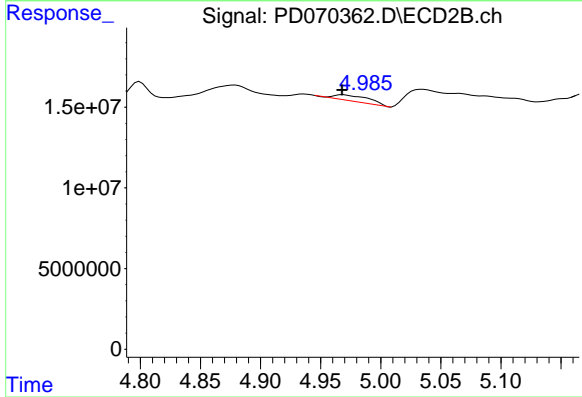
R.T.: 0.000 min
 Exp R.T. : 5.638 min
 Response: 0
 Conc: N.D.



#6 beta-BHC

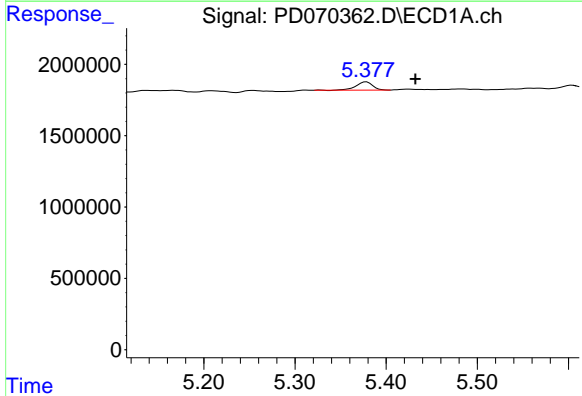
R.T.: 4.379 min
 Delta R.T.: 0.013 min
 Response: 80861
 Conc: N.D.

Instrument :
 ECD_D
 ClientSampleId :



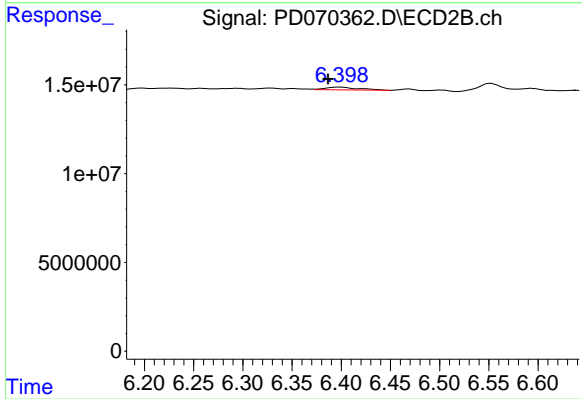
#6 beta-BHC

R.T.: 4.969 min
 Delta R.T.: 0.001 min
 Response: 7415312
 Conc: 0.94 ng/ml



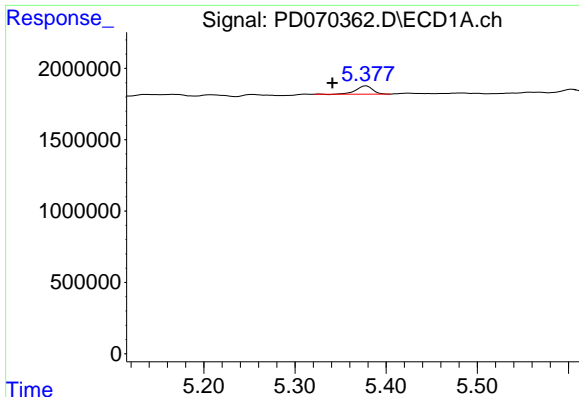
#9 Endosulfan I

R.T.: 5.378 min
 Delta R.T.: -0.054 min
 Response: 726718
 Conc: 0.43 ng/ml



#9 Endosulfan I

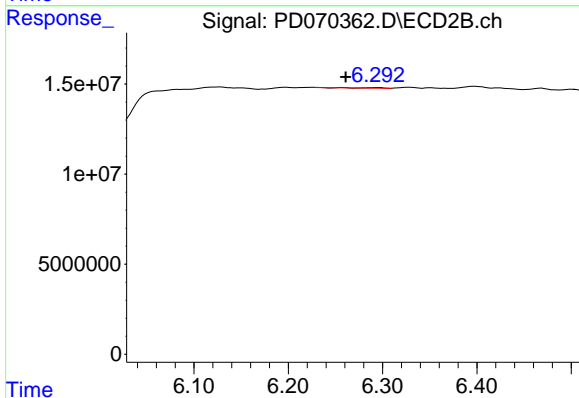
R.T.: 6.398 min
 Delta R.T.: 0.012 min
 Response: 3607050
 Conc: 0.27 ng/ml



#10 trans-Chlordane

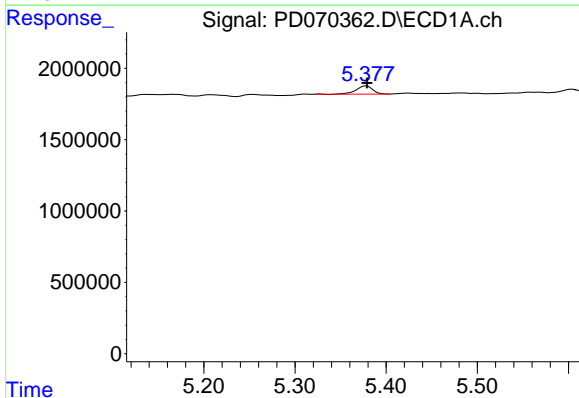
R.T.: 5.378 min
 Delta R.T.: 0.037 min
 Response: 726718
 Conc: 0.40 ng/ml

Instrument :
 ECD_D
 ClientSampleId :



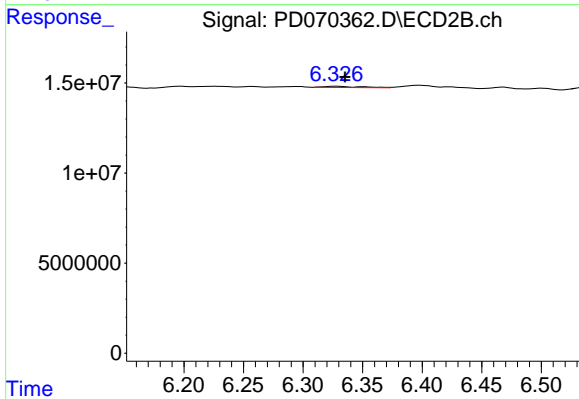
#10 trans-Chlordane

R.T.: 6.293 min
 Delta R.T.: 0.032 min
 Response: 431745
 Conc: N.D.



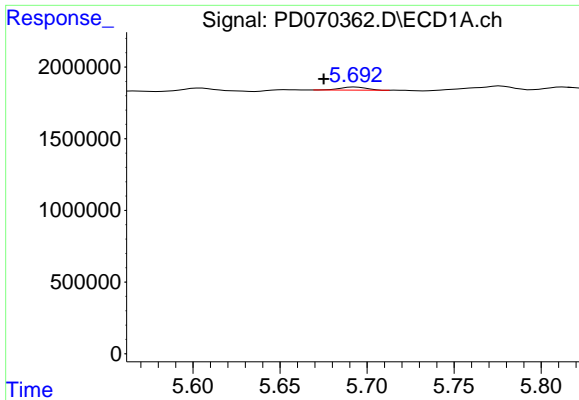
#11 cis-Chlordane

R.T.: 5.378 min
 Delta R.T.: 0.000 min
 Response: 726718
 Conc: 0.41 ng/ml



#11 cis-Chlordane

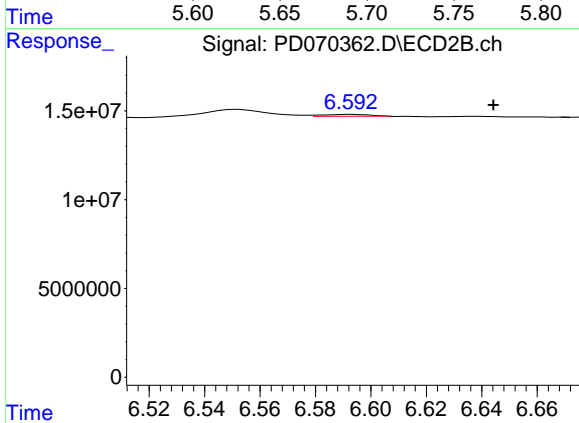
R.T.: 6.328 min
 Delta R.T.: -0.008 min
 Response: 1477140
 Conc: 0.11 ng/ml



#13 Dieldrin

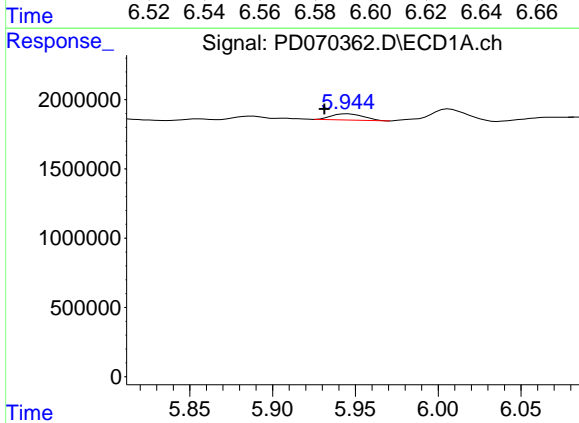
R.T.: 5.693 min
 Delta R.T.: 0.018 min
 Response: 238324
 Conc: 0.13 ng/ml

Instrument :
 ECD_D
 ClientSampleId :



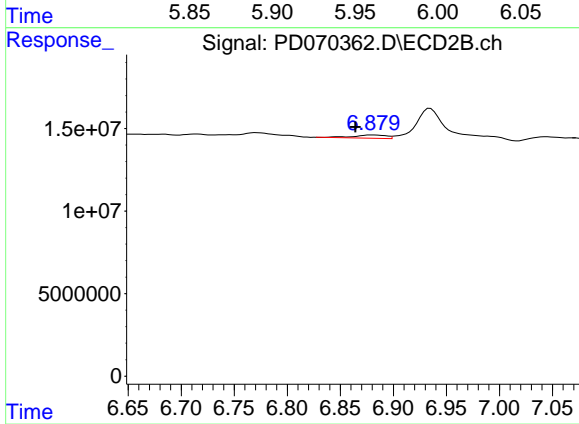
#13 Dieldrin

R.T.: 6.592 min
 Delta R.T.: -0.052 min
 Response: 1240385
 Conc: N.D.



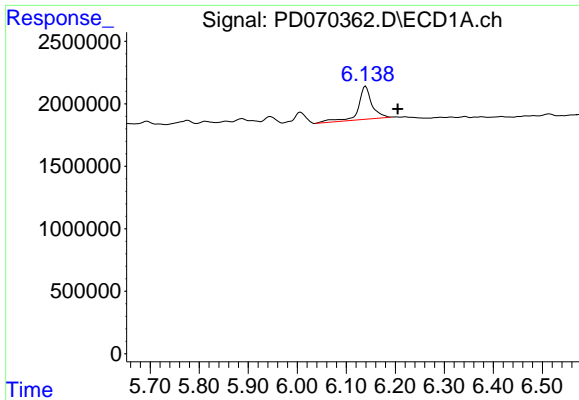
#14 Endrin

R.T.: 5.945 min
 Delta R.T.: 0.014 min
 Response: 609486
 Conc: 0.36 ng/ml



#14 Endrin

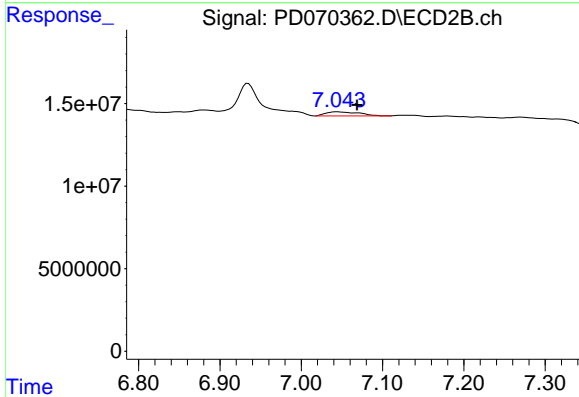
R.T.: 6.881 min
 Delta R.T.: 0.017 min
 Response: 4314223
 Conc: 0.37 ng/ml



#15 Endosulfan II

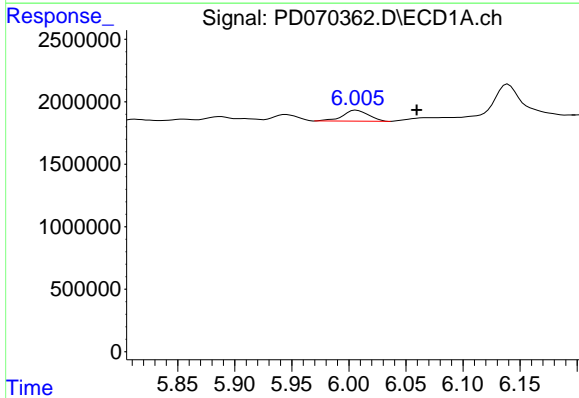
R.T.: 6.140 min
 Delta R.T.: -0.065 min
 Response: 5092975
 Conc: 3.14 ng/ml

Instrument :
 ECD_D
 ClientSampleId :



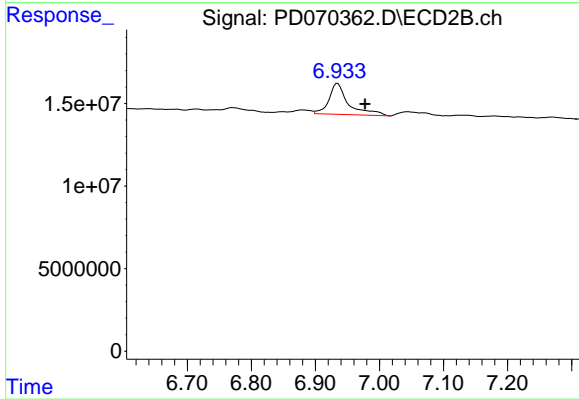
#15 Endosulfan II

R.T.: 7.045 min
 Delta R.T.: -0.023 min
 Response: 6793311
 Conc: 0.62 ng/ml



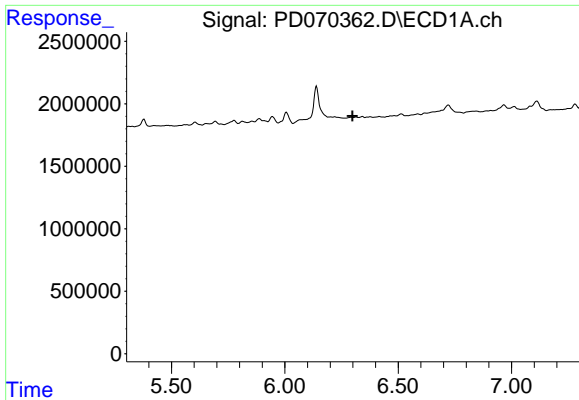
#16 4,4'-DDD

R.T.: 6.007 min
 Delta R.T.: -0.053 min
 Response: 1387755
 Conc: 0.92 ng/ml



#16 4,4'-DDD

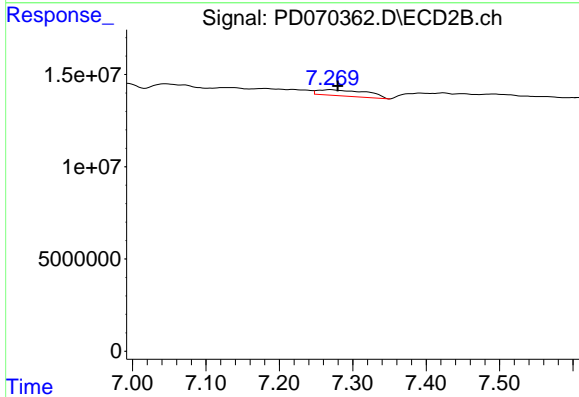
R.T.: 6.935 min
 Delta R.T.: -0.043 min
 Response: 39782111
 Conc: 3.60 ng/ml



#17 4,4'-DDT

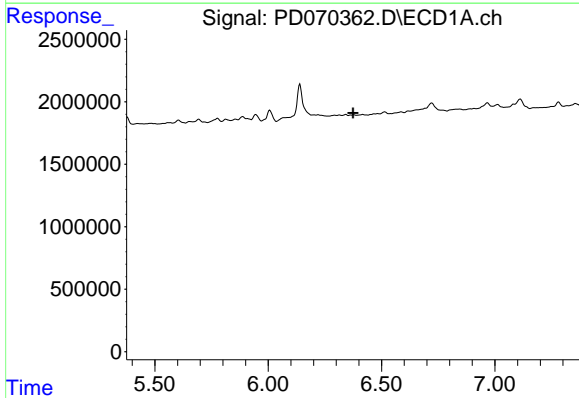
R.T.: 0.000 min
 Exp R.T. : 6.299 min
 Response: 0
 Conc: N.D.

Instrument :
 ECD_D
 ClientSampleId :



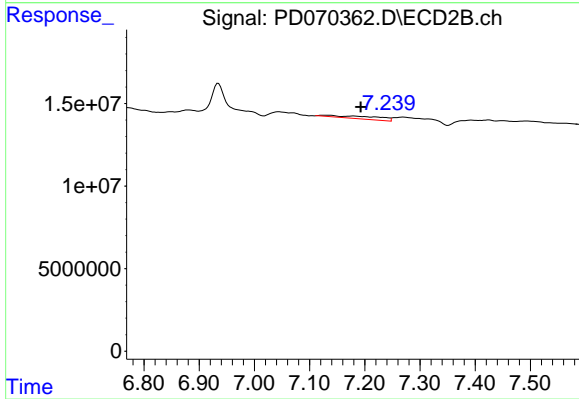
#17 4,4'-DDT

R.T.: 7.270 min
 Delta R.T.: -0.010 min
 Response: 15381146
 Conc: 1.50 ng/ml



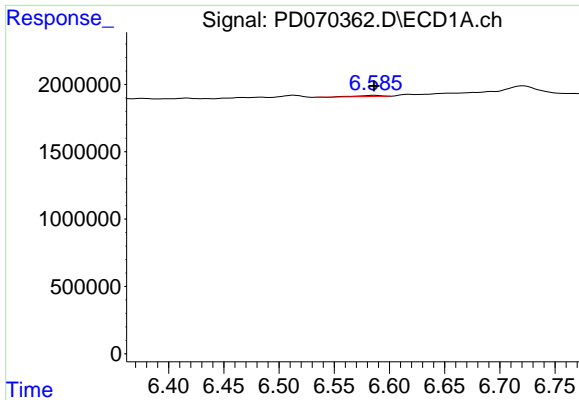
#18 Endrin aldehyde

R.T.: 0.000 min
 Exp R.T. : 6.375 min
 Response: 0
 Conc: N.D.



#18 Endrin aldehyde

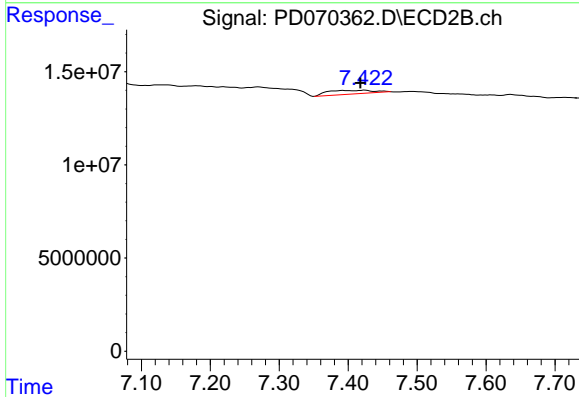
R.T.: 7.180 min
 Delta R.T.: -0.013 min
 Response: 9790356
 Conc: 1.16 ng/ml



#19 Endosulfan Sulfate

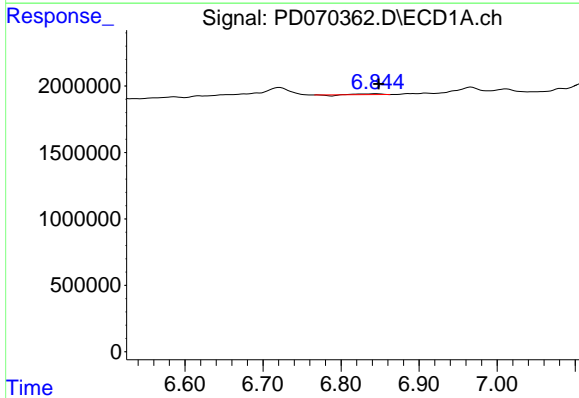
R.T.: 6.587 min
 Delta R.T.: 0.000 min
 Response: 119904
 Conc: N.D.

Instrument :
 ECD_D
 ClientSampleId :



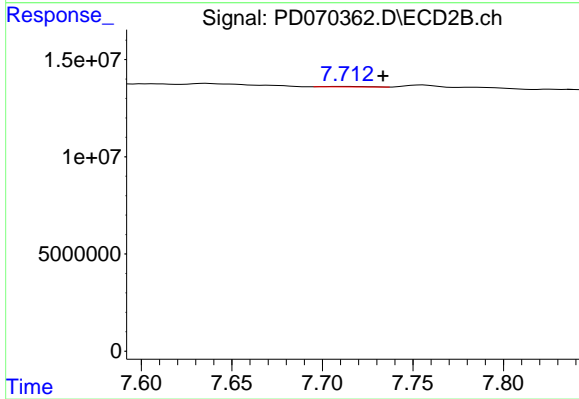
#19 Endosulfan Sulfate

R.T.: 7.423 min
 Delta R.T.: 0.006 min
 Response: 8841564
 Conc: 0.89 ng/ml



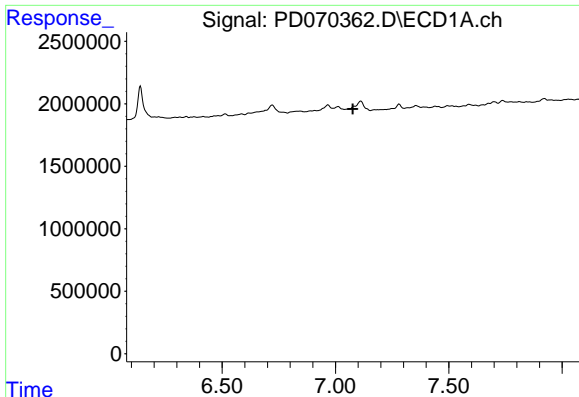
#20 Methoxychlor

R.T.: 6.845 min
 Delta R.T.: -0.003 min
 Response: 86834
 Conc: 0.10 ng/ml



#20 Methoxychlor

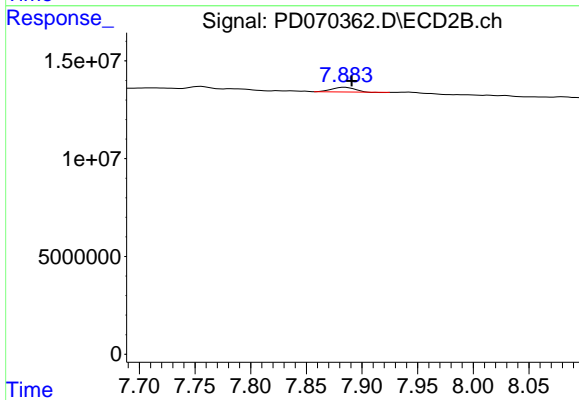
R.T.: 7.713 min
 Delta R.T.: -0.021 min
 Response: 351219
 Conc: N.D.



#21 Endrin ketone

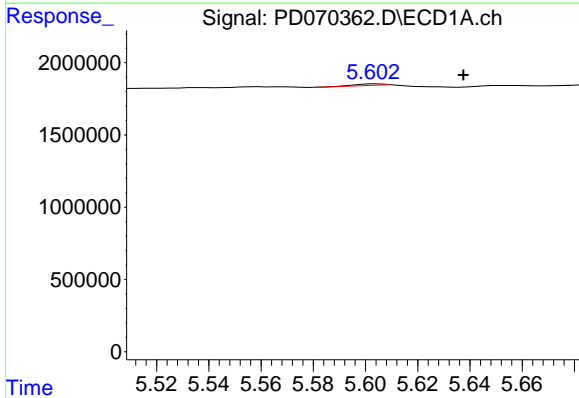
R.T.: 7.083 min
 Delta R.T.: 0.005 min
 Response: -46983
 Conc: N.D.

Instrument :
 ECD_D
 ClientSampleId :



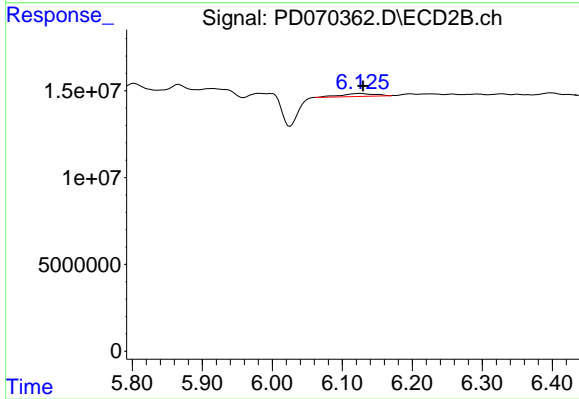
#21 Endrin ketone

R.T.: 7.885 min
 Delta R.T.: -0.006 min
 Response: 3273983
 Conc: 0.32 ng/ml



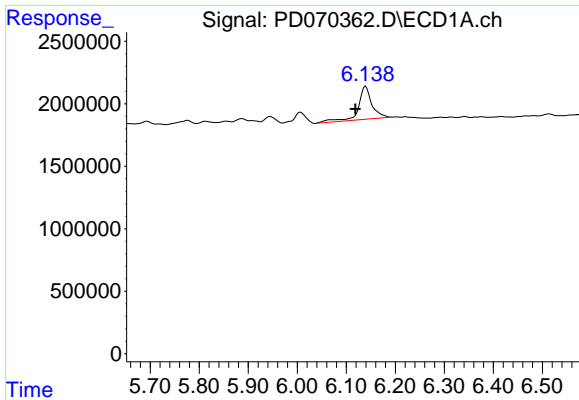
#22 Toxaphene-1

R.T.: 5.604 min
 Delta R.T.: -0.033 min
 Response: 102908
 Conc: 9.52 ng/ml



#22 Toxaphene-1

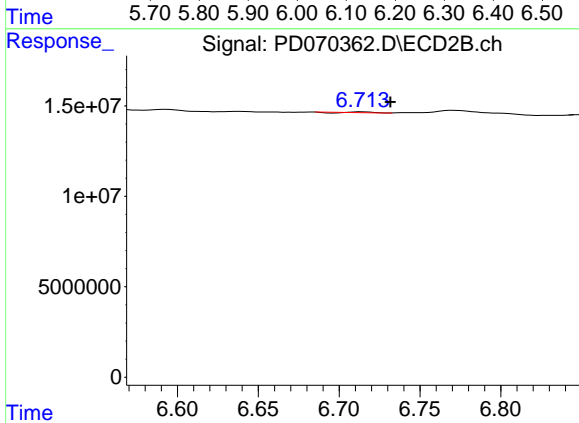
R.T.: 6.125 min
 Delta R.T.: -0.004 min
 Response: 5509819
 Conc: 173.15 ng/ml



#23 Toxaphene-2

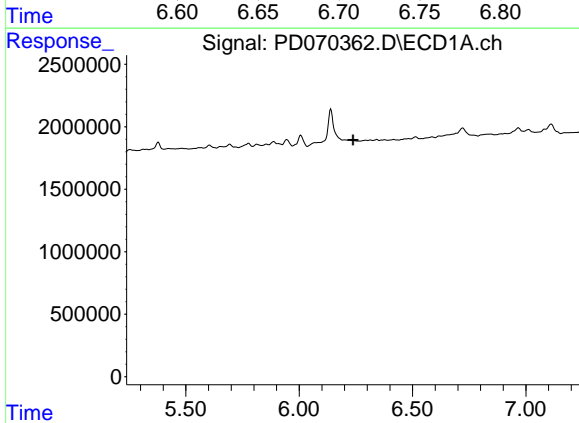
R.T.: 6.140 min
 Delta R.T.: 0.021 min
 Response: 5092975
 Conc: 469.87 ng/ml

Instrument :
 ECD_D
 ClientSampleId :



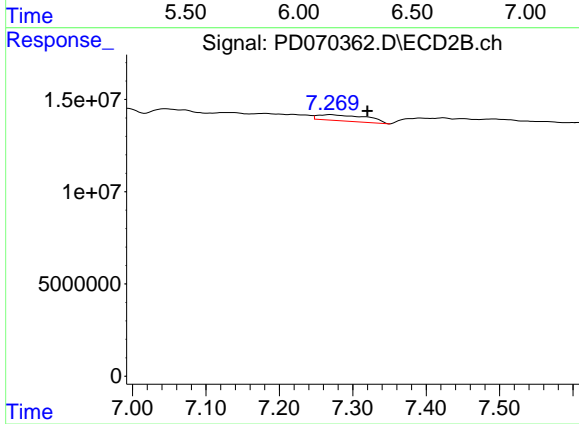
#23 Toxaphene-2

R.T.: 6.714 min
 Delta R.T.: -0.018 min
 Response: 248059
 Conc: 2.02 ng/ml



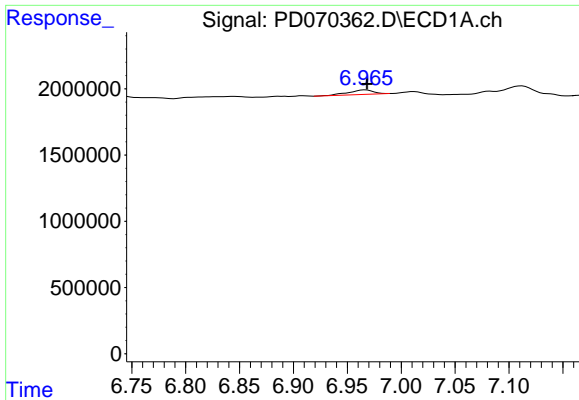
#24 Toxaphene-3

R.T.: 0.000 min
 Exp R.T. : 6.238 min
 Response: 0
 Conc: N.D.



#24 Toxaphene-3

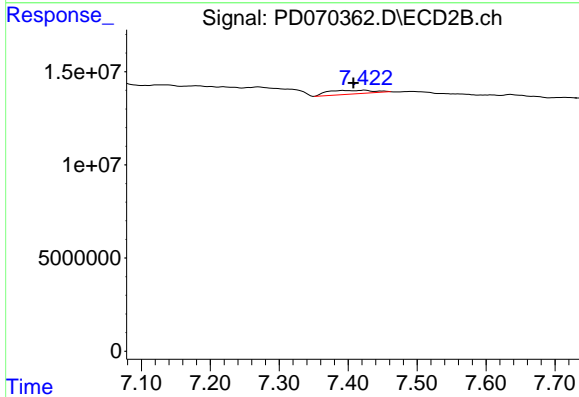
R.T.: 7.270 min
 Delta R.T.: -0.050 min
 Response: 15381146
 Conc: 56.85 ng/ml



#25 Toxaphene-4

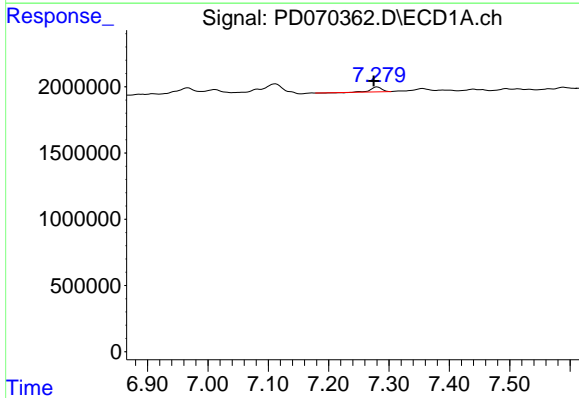
R.T.: 6.967 min
 Delta R.T.: -0.001 min
 Response: 532759
 Conc: 16.39 ng/ml

Instrument :
 ECD_D
 ClientSampleId :



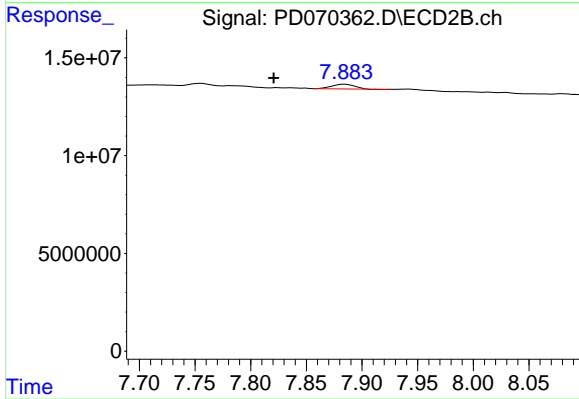
#25 Toxaphene-4

R.T.: 7.423 min
 Delta R.T.: 0.015 min
 Response: 8841564
 Conc: 55.15 ng/ml



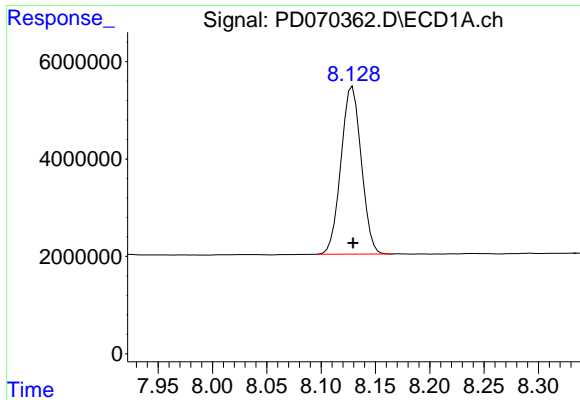
#26 Toxaphene-5

R.T.: 7.281 min
 Delta R.T.: 0.006 min
 Response: 425403
 Conc: 81.29 ng/ml



#26 Toxaphene-5

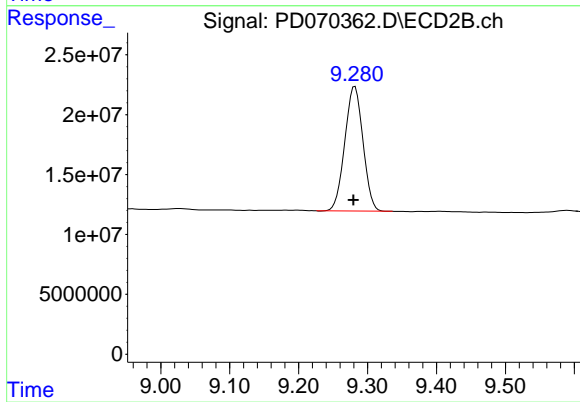
R.T.: 7.885 min
 Delta R.T.: 0.064 min
 Response: 3273983
 Conc: 30.05 ng/ml



#27 Decachlorobiphenyl

R.T.: 8.129 min
Delta R.T.: 0.000 min
Response: 44819868
Conc: 27.98 ng/ml

Instrument :
ECD_D
ClientSampleId :



#27 Decachlorobiphenyl

R.T.: 9.282 min
Delta R.T.: 0.002 min
Response: 190554602
Conc: 26.40 ng/ml