

Data Path : Z:\pestpcbsrv\HPCHEM1\ECD\_D\Data\PD070122\  
 Data File : PD070661.D  
 Signal(s) : Signal #1: ECD1A.ch Signal #2: ECD2B.ch  
 Acq On : 01 Jul 2022 07:24  
 Operator : AR\AJ  
 Sample : INDB201  
 Misc :  
 ALS Vial : 40 Sample Multiplier: 1

**Instrument :**  
 ECD\_D  
**ClientSampleId :**  
 INDB2050

**Manual Integrations**  
**APPROVED**

Reviewed By :Abdul Mirza 07/05/2022  
 Supervised By :Ankita Jodhani 07/05/2022

Integration File signal 1: autoint1.e  
 Integration File signal 2: autoint2.e  
 Quant Time: Jul 01 09:23:52 2022  
 Quant Method : Z:\pestpcbsrv\HPCHEM1\ECD\_D\Method\PD070122CLP.M  
 Quant Title : GC Extractables  
 QLast Update : Fri Jul 01 09:23:45 2022  
 Response via : Initial Calibration  
 Integrator: ChemStation

Volume Inj. : 1 µl  
 Signal #1 Phase : ZB-MR1 Signal #2 Phase: ZB-MR1  
 Signal #1 Info : 30M x 0.32mm x0.2 Signal #2 Info : 30M x 0.32mm x 0.50µm

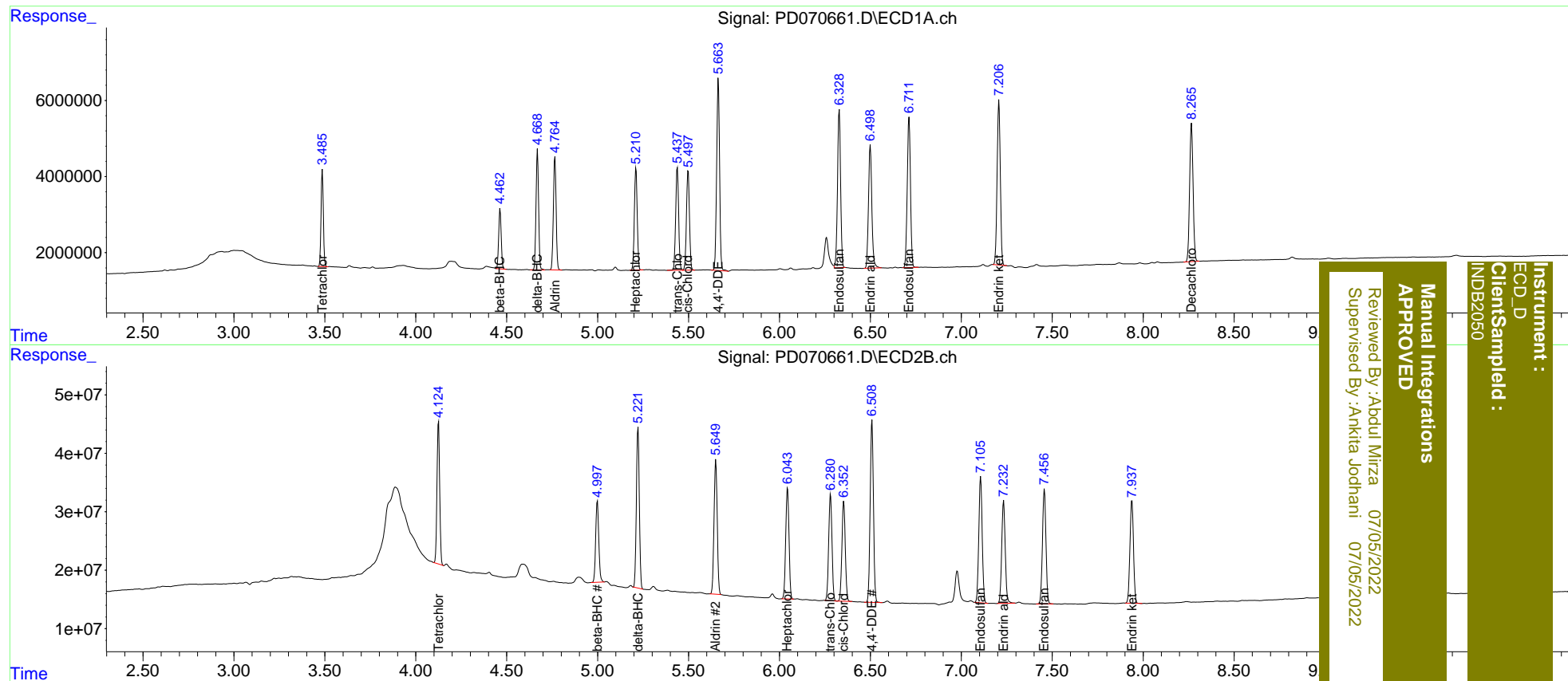
Compound	RT#1	RT#2	Resp#1	Resp#2	ng/ml	ng/ml
-----						
System Monitoring Compounds						
1) SA Tetrachlo...	3.487	4.125	22389483	249.5E6	9.544	9.550
27) SA Decachlor...	8.266	9.316	47849491	143.7E6	19.188	19.429
Target Compounds						
5) MB Aldrin	4.766	5.650	31164429	280.4E6	9.444	9.499
6) B beta-BHC	4.464	4.999	15155956	164.6E6	9.501	9.448
7) B delta-BHC	4.670	5.222	31032330	308.2E6	9.470	9.538
8) B Heptachlo...	5.211	6.045	29248251	238.9E6	9.480	9.478
10) B trans-Chl...	5.439	6.280	30497054	230.3E6	9.456	9.491m
11) B cis-Chlor...	5.498	6.354	29985787	219.5E6	9.473	9.516
12) B 4,4'-DDE	5.664	6.509	56108098	387.6E6	18.886	18.985
15) B Endosulfa...	6.329	7.107	48800541	280.7E6	18.991	19.096
18) B Endrin al...	6.500	7.233	41421795	235.5E6	19.080	19.133
19) B Endosulfa...	6.713	7.457	48537007	262.8E6	19.038	19.118
21) B Endrin ke...	7.207	7.938	52836088	239.0E6	19.070	19.181
-----						

(f)=RT Delta > 1/2 Window (#)=Amounts differ by > 25% (m)=manual int.

Data Path : Z:\pestpcbsrv\HPCHEM1\ECD\_D\Data\PD070122\  
 Data File : PD070661.D  
 Signal(s) : Signal #1: ECD1A.ch Signal #2: ECD2B.ch  
 Acq On : 01 Jul 2022 07:24  
 Operator : AR\AJ  
 Sample : INDB201  
 Misc :  
 ALS Vial : 40 Sample Multiplier: 1

Integration File signal 1: autoint1.e  
 Integration File signal 2: autoint2.e  
 Quant Time: Jul 01 09:23:52 2022  
 Quant Method : Z:\pestpcbsrv\HPCHEM1\ECD\_D\Method\PD070122CLP.M  
 Quant Title : GC Extractables  
 QLast Update : Fri Jul 01 09:23:45 2022  
 Response via : Initial Calibration  
 Integrator: ChemStation

Volume Inj. : 1 µl  
 Signal #1 Phase : ZB-MR2 Signal #2 Phase: ZB-MR1  
 Signal #1 Info : 30M x 0.32mm x0.2 Signal #2 Info : 30M x 0.32mm x 0.50µm



**Instrument :**  
 ECD\_D  
**Client/Sampled :**  
 INDB2050  
**Manual Integrations**  
**APPROVED**  
 Reviewed By : Aboul Mirza 07/05/2022  
 Supervised By : Ankita Jodhani 07/05/2022