

Data Path : Z:\pestpcbsrv\HPCHEM1\ECD\_D\Data\PD070122\  
 Data File : PD070673.D  
 Signal(s) : Signal #1: ECD1A.ch Signal #2: ECD2B.ch  
 Acq On : 01 Jul 2022 10:14  
 Operator : AR\AJ  
 Sample : N3496-12  
 Misc :  
 ALS Vial : 51 Sample Multiplier: 1

**Instrument :**  
 ECD\_D  
**ClientSampleId :**  
 PEST-GPC2-BLANK-SPIKE

**Manual Integrations**  
**APPROVED**  
 Reviewed By :Abdul Mirza 07/05/2022  
 Supervised By :Ankita Jodhani 07/05/2022

Integration File signal 1: autoint1.e  
 Integration File signal 2: autoint2.e  
 Quant Time: Jul 02 06:19:43 2022  
 Quant Method : Z:\pestpcbsrv\HPCHEM1\ECD\_D\Method\PD070122CLP.M  
 Quant Title : GC Extractables  
 QLast Update : Fri Jul 01 11:10:28 2022  
 Response via : Initial Calibration  
 Integrator: ChemStation

Volume Inj. : 1 µl  
 Signal #1 Phase : ZB-MR2 Signal #2 Phase: ZB-MR1  
 Signal #1 Info : 30M x 0.32mm x0.2 Signal #2 Info : 30M x 0.32mm x 0.50µm

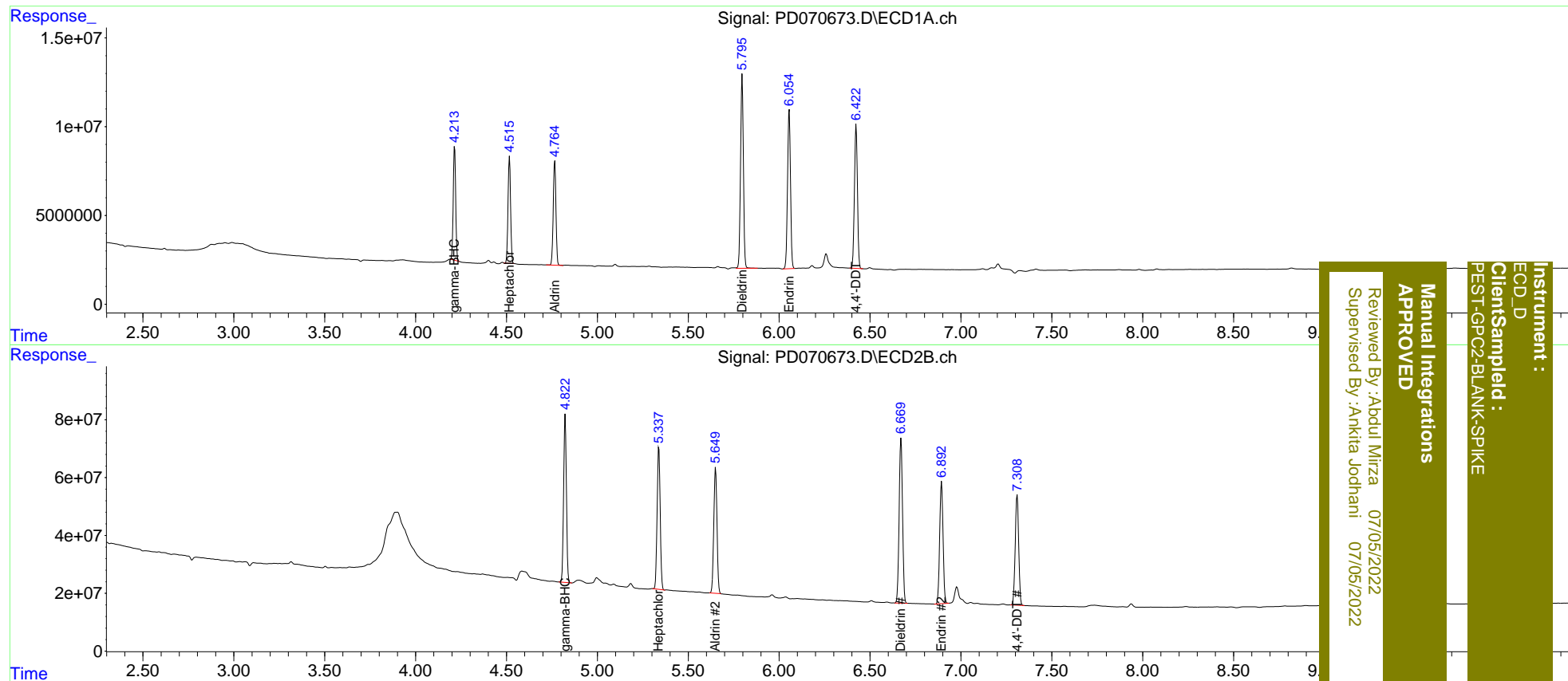
Compound	RT#1	RT#2	Resp#1	Resp#2	ng/ml	ng/ml
-----						
System Monitoring Compounds						
Target Compounds						
3) MA gamma-BHC...	4.215	4.823	59748119	616.2E6	18.285	18.519
4) MA Heptachlor	4.517	5.338	58867847	576.2E6	18.096	18.324
5) MB Aldrin	4.766	5.650	61072521	530.0E6	18.741	18.984
13) MA Dieldrin	5.797	6.669	118.3E6	738.9E6	37.874	37.536m
14) MA Endrin	6.056	6.894	101.2E6	541.7E6	39.077	38.356
17) MA 4,4'-DDT	6.424	7.309	92934993	505.1E6	38.088	38.606
-----						

(f)=RT Delta > 1/2 Window (#)=Amounts differ by > 25% (m)=manual int.

Data Path : Z:\pestpcbsrv\HPCHEM1\ECD\_D\Data\PD070122\  
 Data File : PD070673.D  
 Signal(s) : Signal #1: ECD1A.ch Signal #2: ECD2B.ch  
 Acq On : 01 Jul 2022 10:14  
 Operator : AR\AJ  
 Sample : N3496-12  
 Misc :  
 ALS Vial : 51 Sample Multiplier: 1

Integration File signal 1: autoint1.e  
 Integration File signal 2: autoint2.e  
 Quant Time: Jul 02 06:19:43 2022  
 Quant Method : Z:\pestpcbsrv\HPCHEM1\ECD\_D\Method\PD070122CLP.M  
 Quant Title : GC Extractables  
 QLast Update : Fri Jul 01 11:10:28 2022  
 Response via : Initial Calibration  
 Integrator: ChemStation

Volume Inj. : 1 µl  
 Signal #1 Phase : ZB-MR2 Signal #2 Phase: ZB-MR1  
 Signal #1 Info : 30M x 0.32mm x0.2 Signal #2 Info : 30M x 0.32mm x 0.50µm



Instrument : ECD\_D  
 Client Sampled : PEST-GPC2-BLANK-SPIKE  
 Manual Integrations APPROVED  
 Reviewed By : Aboul Mirza 07/05/2022  
 Supervised By : Ankita Jodhani 07/05/2022