

Data Path : Z:\pestpcbsrv\HPCHEM1\ECD_D\Data\PD080619\
 Data File : PD054200.D
 Signal(s) : Signal #1: ECD1A.CH Signal #2: ECD2B.CH
 Acq On : 06 Aug 2019 12:02
 Operator : SM\AJ
 Sample : PSTDCCC050
 Misc :
 ALS Vial : 4 Sample Multiplier: 1

Instrument :
 ECD_D
 ClientSampleId :
 PSTDCCC050

Integration File signal 1: autoint1.e
 Integration File signal 2: autoint2.e
 Quant Time: Aug 07 00:59:35 2019
 Quant Method : Z:\pestpcbsrv\HPCHEM1\ECD_D\Method\PD071919.M
 Quant Title : GC Extractables
 QLast Update : Fri Jul 19 04:33:23 2019
 Response via : Initial Calibration
 Integrator: ChemStation 6890 Scale Mode: Large solvent peaks clipped

Volume Inj. : 2 µl
 Signal #1 Phase : ZB-MR2 Signal #2 Phase: ZB-MR1
 Signal #1 Info : 30M x 0.32mm x0.2 Signal #2 Info : 30M x 0.32mm x 0.50µm

Compound	RT#1	RT#2	Resp#1	Resp#2	ng/ml	ng/ml

System Monitoring Compounds						
1) SA Tetrachlo...	3.312	3.982	30392280	46174771	52.807	53.006
28) SA Decachlor...	8.008	9.025	29075699	40194702	43.192	43.357
Target Compounds						
2) A alpha-BHC	3.741	4.369	46480837	69895710	53.667	55.409
3) MA gamma-BHC...	4.018	4.652	43959704	65845699	53.590	53.685
4) MA Heptachlor	4.306	5.160	38375559	64397359	52.661	51.407
5) MB Aldrin	4.548	5.463	41957902	62717885	52.798	51.008
6) B beta-BHC	4.268	4.819	18628398	29932445	52.888	53.461
7) B delta-BHC	4.465	5.035	44376084	68237863	52.927	52.718
8) B Heptachlo...	4.986	5.847	38734551	60058391	51.059	49.665
9) A Endosulfan I	5.318	6.203	36377921	55838459	48.963	48.084
10) B gamma-Chl...	5.208	6.080	40199482	62188831	49.422	47.211
11) B alpha-Chl...	5.266	6.153	39706609	61284159	49.012	47.199
12) B 4,4'-DDE	5.435	6.308	36493718	57355917	46.055	46.680
13) MA Dieldrin	5.559	6.458	39197851	60225387	48.266	47.929
14) MA Endrin	5.813	6.676	31694430	44411148	42.322	42.373
15) B Endosulfa...	6.087	6.882	35107806	53372320	46.921	46.156
16) A 4,4'-DDD	5.947	6.795	29017701	48573336	48.485	48.079
17) MA 4,4'-DDT	6.184	7.093	24924257	43037631	43.279	43.687
18) B Endrin al...	6.255	7.005	29635219	46667917	46.657	46.925
19) B Endosulfa...	6.466	7.228	31597626	49175753	44.950	45.254
20) A Methoxychlor	6.734	7.549	12146729	22989357	42.504	42.846
21) B Endrin ke...	6.953	7.697	36802758	56829183	45.922	46.740
22) Mirex	7.130	8.152	28391791	39466585	43.642	42.820
23) Chlordane-1	4.189f	0.000	503396	0	25.441	N.D. #
24) Chlordane-2	0.000	5.463f	0	62717885	N.D.	1479.774 #
25) Chlordane-3	5.208	6.080	40199482	62188831	505.453	355.129 #
26) Chlordane-4	5.266	6.153	39706609	61284159	576.934	289.521 #
27) Chlordane-5	6.087	0.000	35107806	0	1314.394	N.D. #

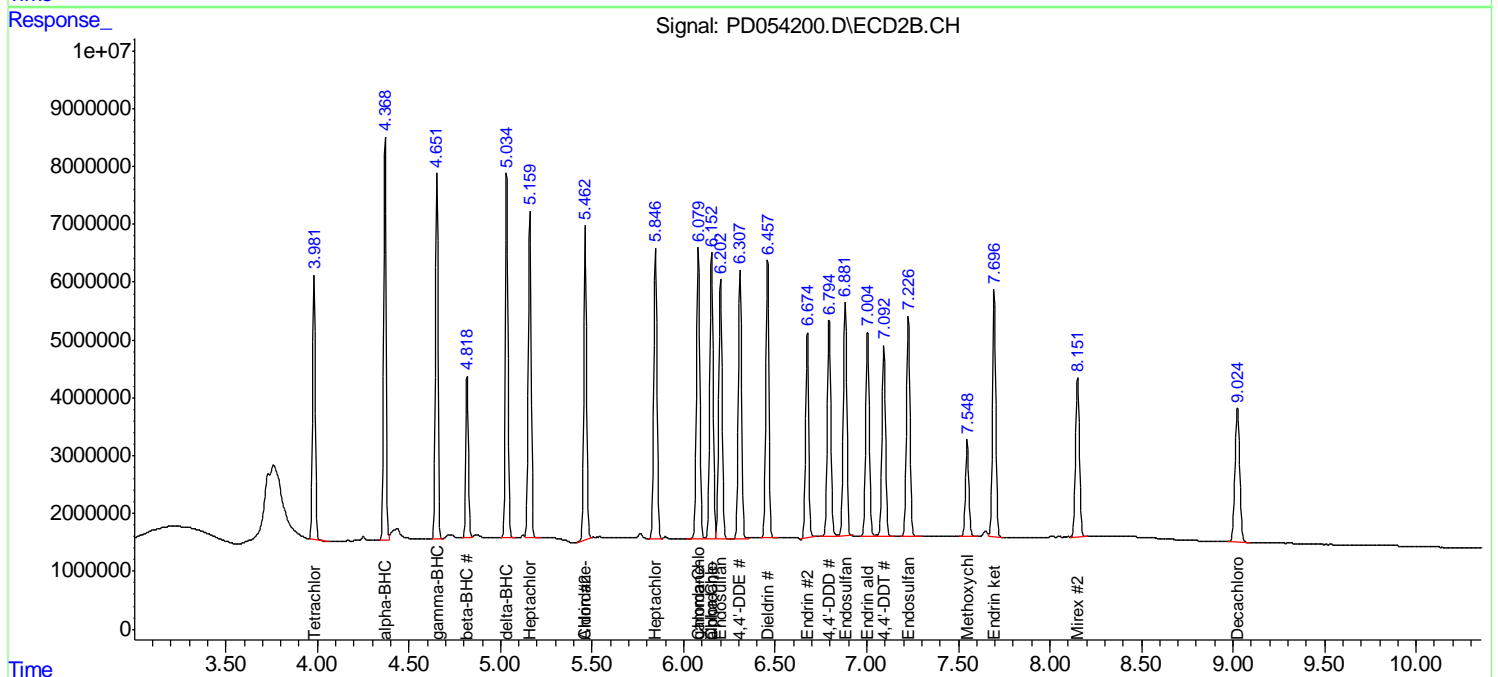
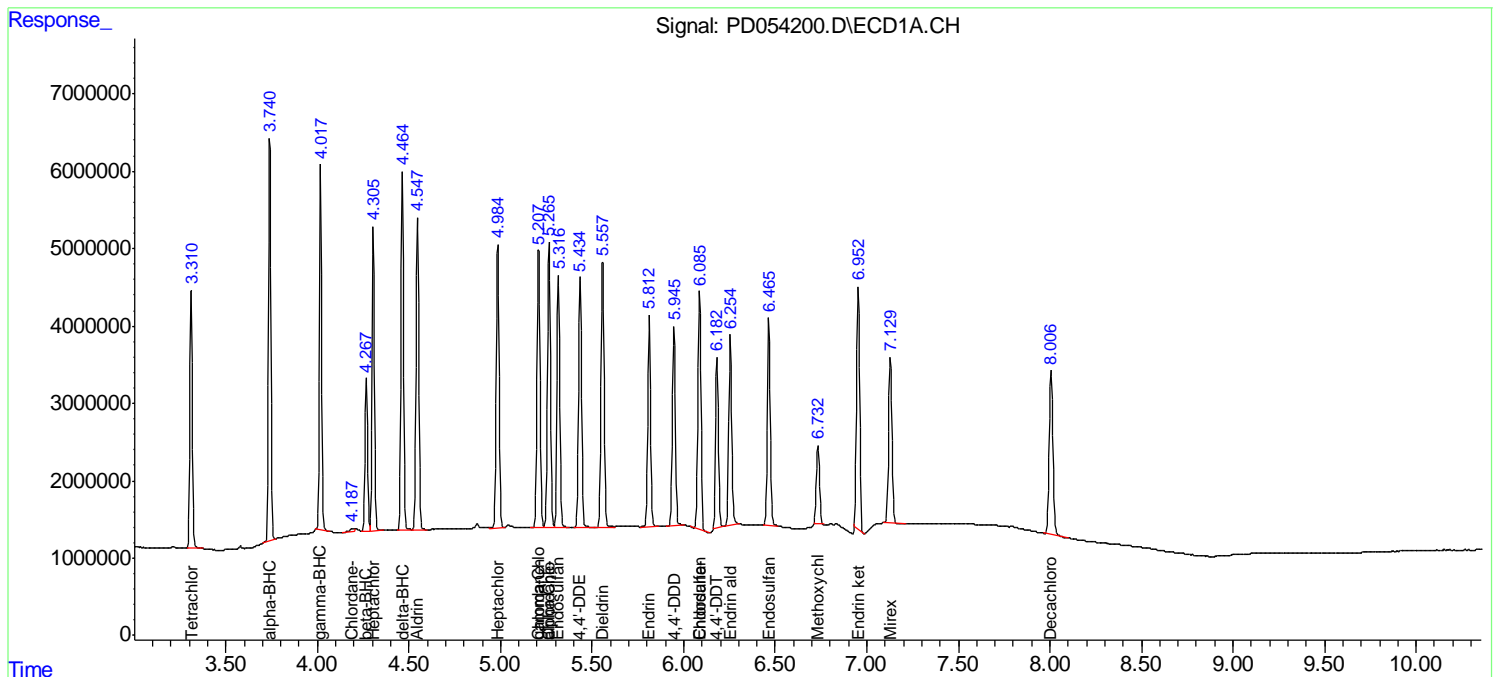
(f)=RT Delta > 1/2 Window (#)=Amounts differ by > 25% (m)=manual int.

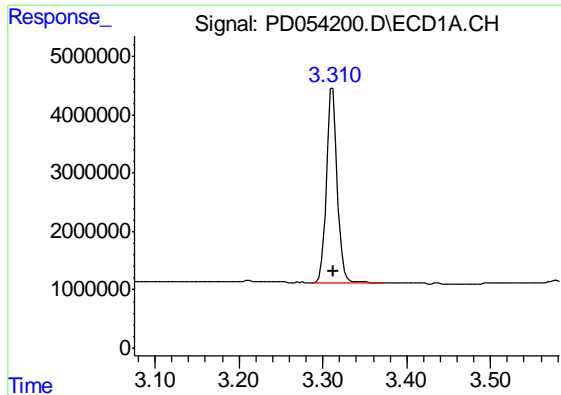
Data Path : Z:\pestpcbsrv\HPCHEM1\ECD_D\Data\PD080619\
 Data File : PD054200.D
 Signal(s) : Signal #1: ECD1A.CH Signal #2: ECD2B.CH
 Acq On : 06 Aug 2019 12:02
 Operator : SM\AJ
 Sample : PSTDCCC050
 Misc :
 ALS Vial : 4 Sample Multiplier: 1

Instrument :
 ECD_D
 Client Sampled :
 PSTDCCC050

Integration File signal 1: autoint1.e
 Integration File signal 2: autoint2.e
 Quant Time: Aug 07 00:59:35 2019
 Quant Method : Z:\pestpcbsrv\HPCHEM1\ECD_D\Method\PD071919.M
 Quant Title : GC Extractables
 QLast Update : Fri Jul 19 04:33:23 2019
 Response via : Initial Calibration
 Integrator: ChemStation 6890 Scale Mode: Large solvent peaks clipped

Volume Inj. : 2 µl
 Signal #1 Phase : ZB-MR2 Signal #2 Phase: ZB-MR1
 Signal #1 Info : 30M x 0.32mm x0.2 Signal #2 Info : 30M x 0.32mm x 0.50µm

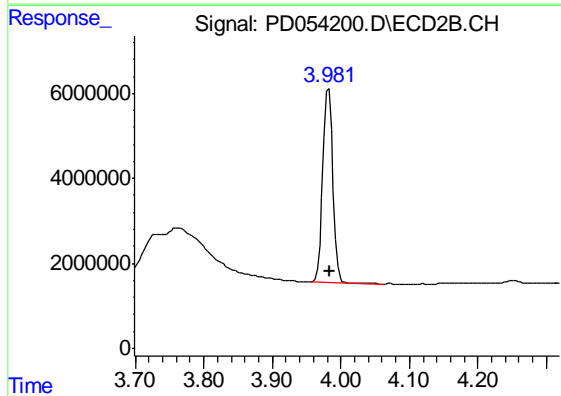




#1 Tetrachloro-m-xylene

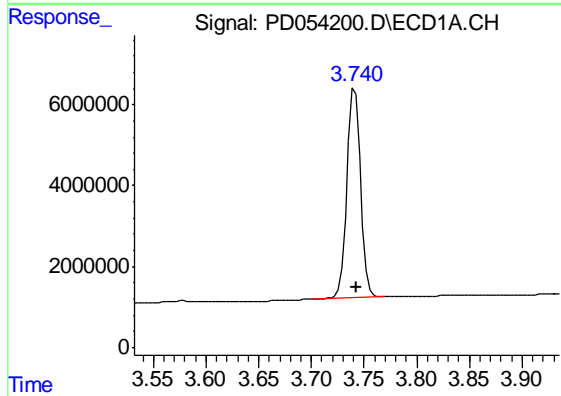
R.T.: 3.312 min
Delta R.T.: -0.001 min
Response: 30392280
Conc: 52.81 ng/ml

Instrument :
ECD_D
ClientSampleId :
PSTDCCC050



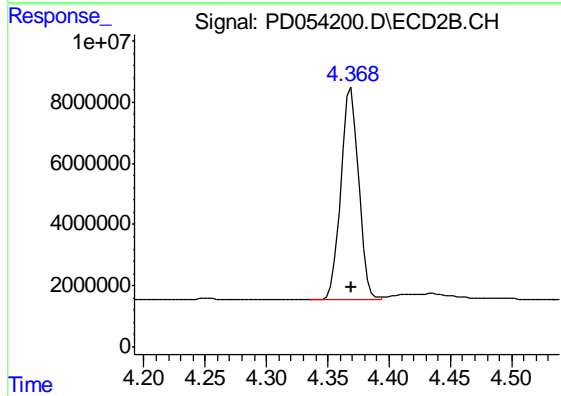
#1 Tetrachloro-m-xylene

R.T.: 3.982 min
Delta R.T.: 0.000 min
Response: 46174771
Conc: 53.01 ng/ml



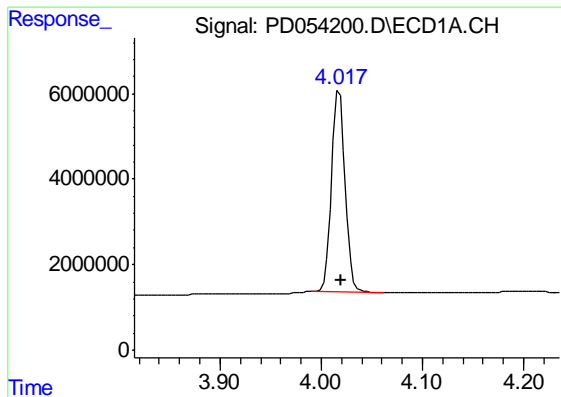
#2 alpha-BHC

R.T.: 3.741 min
Delta R.T.: -0.001 min
Response: 46480837
Conc: 53.67 ng/ml



#2 alpha-BHC

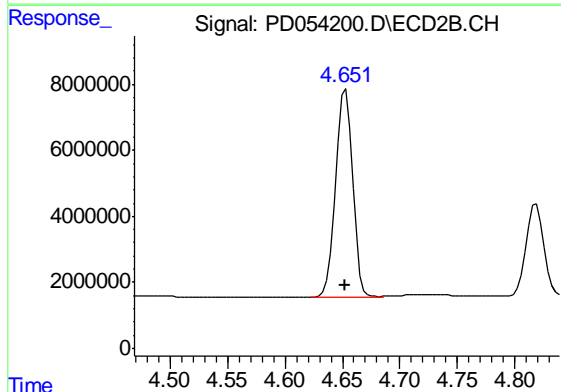
R.T.: 4.369 min
Delta R.T.: 0.000 min
Response: 69895710
Conc: 55.41 ng/ml



#3 gamma-BHC (Lindane)

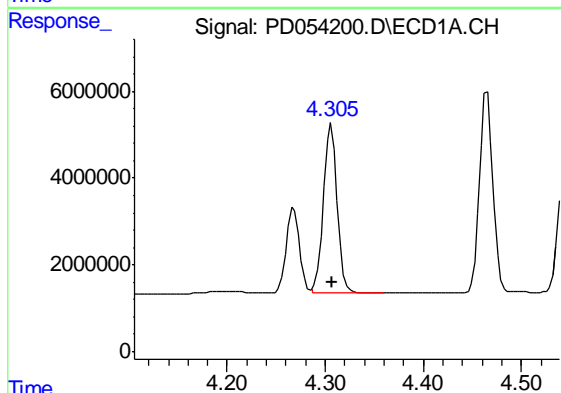
R.T.: 4.018 min
 Delta R.T.: -0.001 min
 Response: 43959704
 Conc: 53.59 ng/ml

Instrument :
 ECD_D
 ClientSampleId :
 PSTDCCC050



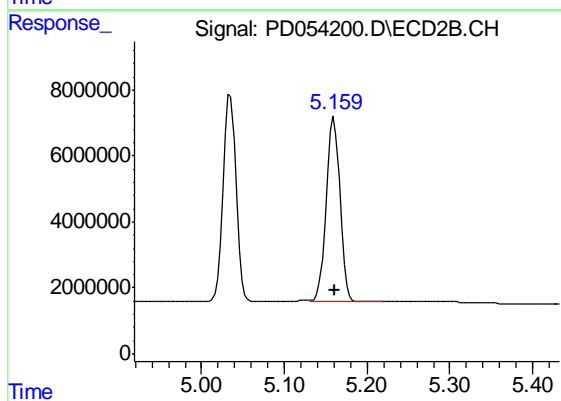
#3 gamma-BHC (Lindane)

R.T.: 4.652 min
 Delta R.T.: 0.000 min
 Response: 65845699
 Conc: 53.69 ng/ml



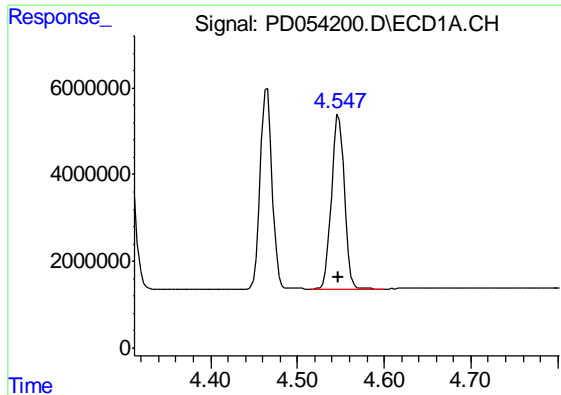
#4 Heptachlor

R.T.: 4.306 min
 Delta R.T.: -0.001 min
 Response: 38375559
 Conc: 52.66 ng/ml



#4 Heptachlor

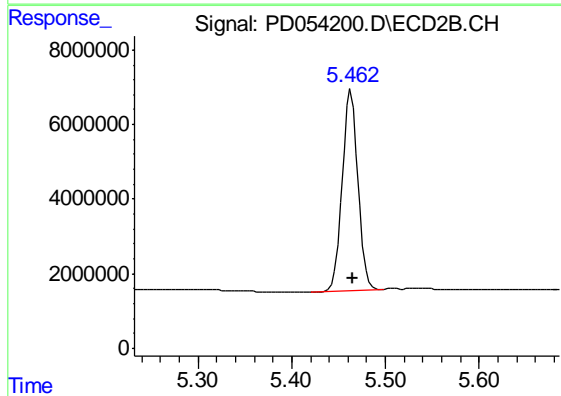
R.T.: 5.160 min
 Delta R.T.: 0.000 min
 Response: 64397359
 Conc: 51.41 ng/ml



#5 Aldrin

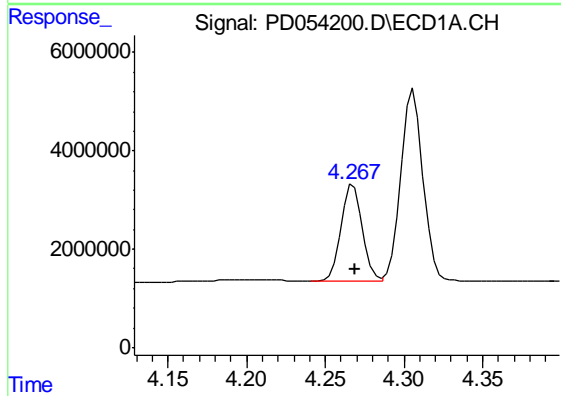
R.T.: 4.548 min
 Delta R.T.: 0.000 min
 Response: 41957902
 Conc: 52.80 ng/ml

Instrument :
 ECD_D
 ClientSampleId :
 PSTDCCC050



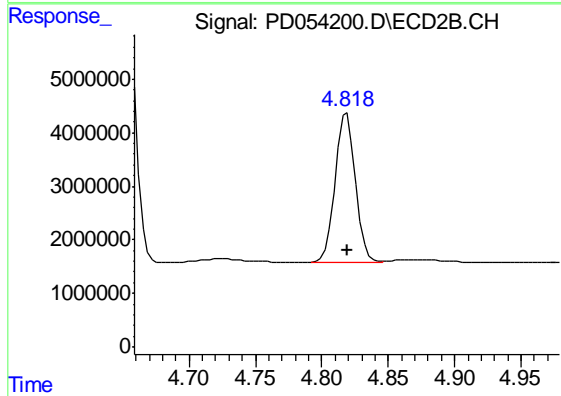
#5 Aldrin

R.T.: 5.463 min
 Delta R.T.: 0.000 min
 Response: 62717885
 Conc: 51.01 ng/ml



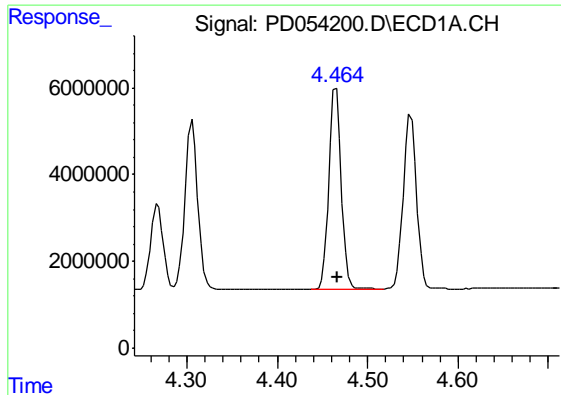
#6 beta-BHC

R.T.: 4.268 min
 Delta R.T.: 0.000 min
 Response: 18628398
 Conc: 52.89 ng/ml



#6 beta-BHC

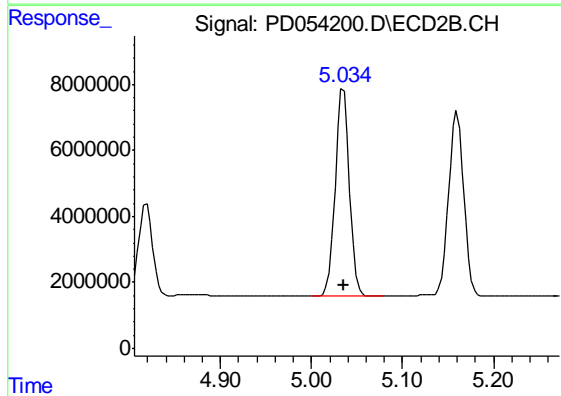
R.T.: 4.819 min
 Delta R.T.: 0.000 min
 Response: 29932445
 Conc: 53.46 ng/ml



#7 delta-BHC

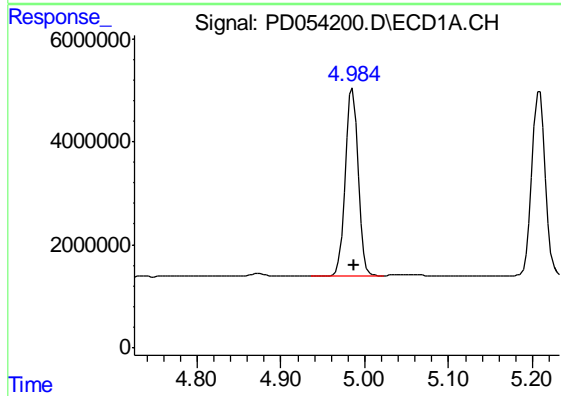
R.T.: 4.465 min
Delta R.T.: -0.001 min
Response: 44376084
Conc: 52.93 ng/ml

Instrument :
ECD_D
ClientSampleId :
PSTDCCC050



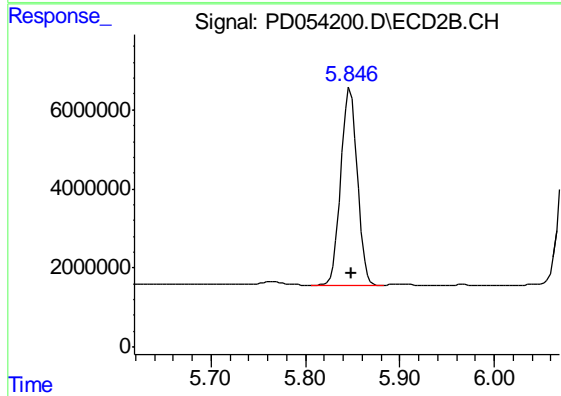
#7 delta-BHC

R.T.: 5.035 min
Delta R.T.: 0.000 min
Response: 68237863
Conc: 52.72 ng/ml



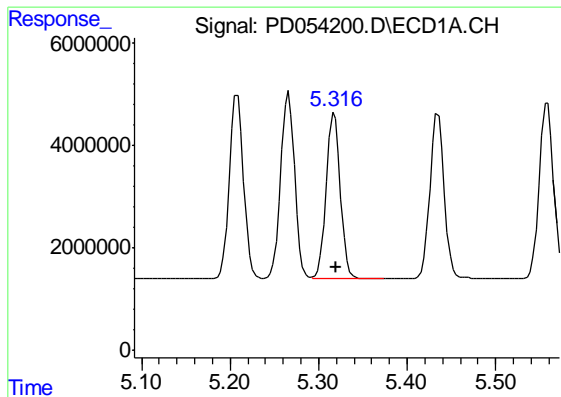
#8 Heptachlor epoxide

R.T.: 4.986 min
Delta R.T.: 0.000 min
Response: 38734551
Conc: 51.06 ng/ml



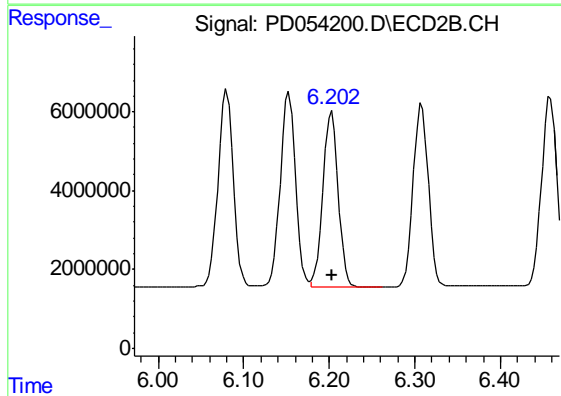
#8 Heptachlor epoxide

R.T.: 5.847 min
Delta R.T.: 0.000 min
Response: 60058391
Conc: 49.67 ng/ml

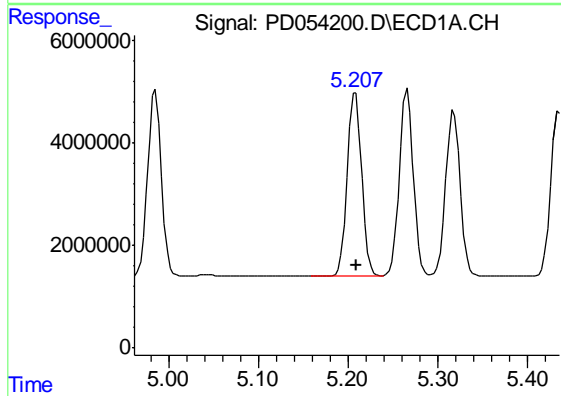


#9 Endosulfan I
 R.T.: 5.318 min
 Delta R.T.: -0.001 min
 Response: 36377921
 Conc: 48.96 ng/ml

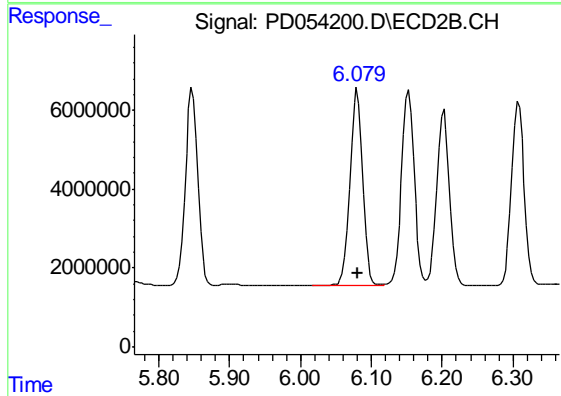
Instrument :
 ECD_D
 ClientSampleId :
 PSTDCCC050



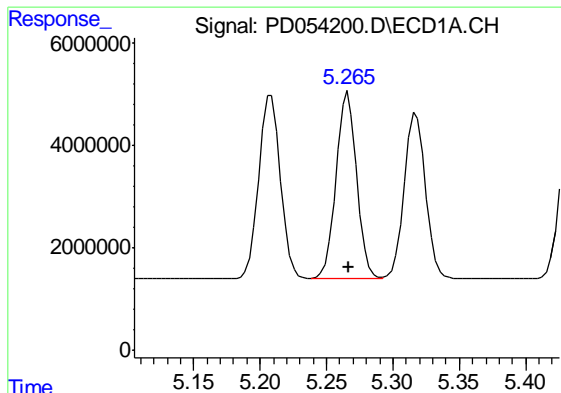
#9 Endosulfan I
 R.T.: 6.203 min
 Delta R.T.: 0.000 min
 Response: 55838459
 Conc: 48.08 ng/ml



#10 gamma-Chlordane
 R.T.: 5.208 min
 Delta R.T.: -0.001 min
 Response: 40199482
 Conc: 49.42 ng/ml

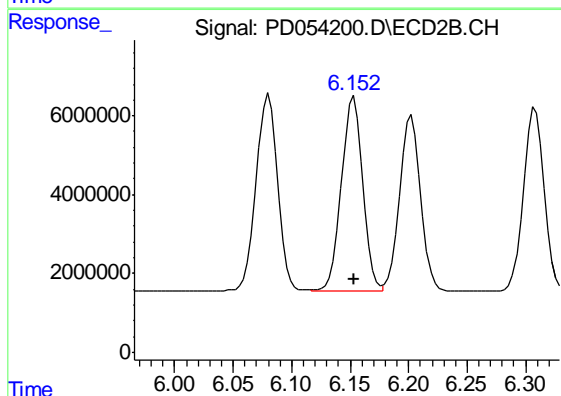


#10 gamma-Chlordane
 R.T.: 6.080 min
 Delta R.T.: 0.000 min
 Response: 62188831
 Conc: 47.21 ng/ml

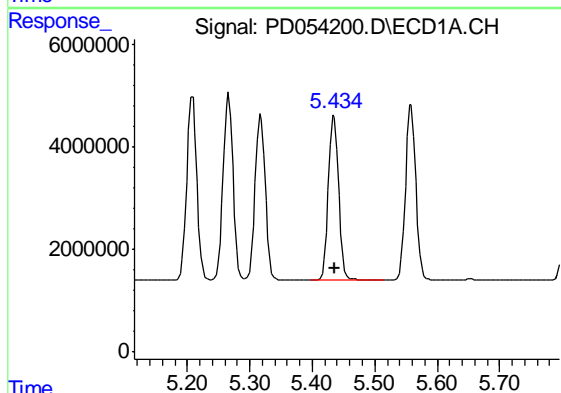


#11 alpha-Chlordane
R.T.: 5.266 min
Delta R.T.: 0.000 min
Response: 39706609
Conc: 49.01 ng/ml

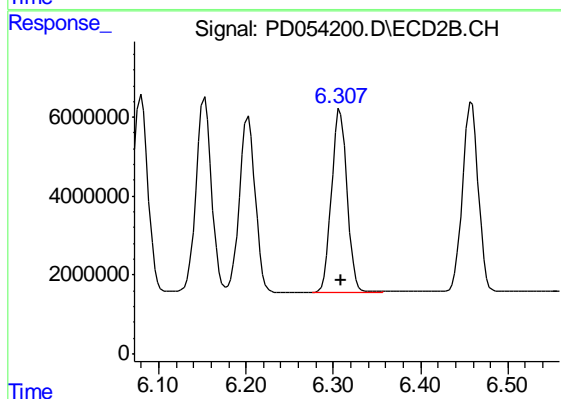
Instrument :
ECD_D
ClientSampleId :
PSTDCCC050



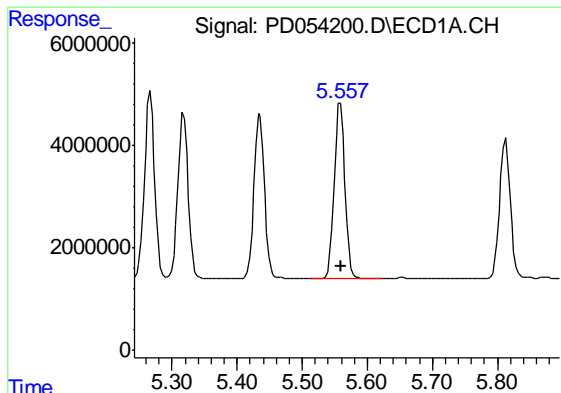
#11 alpha-Chlordane
R.T.: 6.153 min
Delta R.T.: 0.000 min
Response: 61284159
Conc: 47.20 ng/ml



#12 4,4'-DDE
R.T.: 5.435 min
Delta R.T.: -0.001 min
Response: 36493718
Conc: 46.05 ng/ml



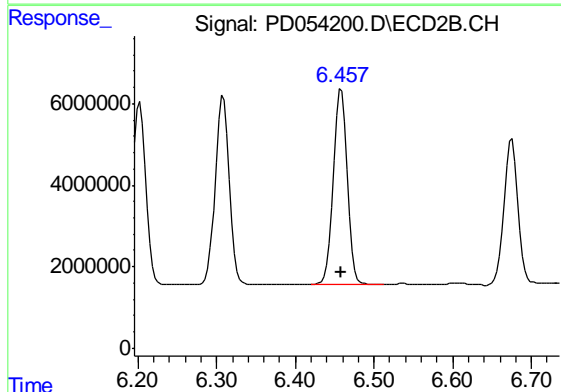
#12 4,4'-DDE
R.T.: 6.308 min
Delta R.T.: 0.000 min
Response: 57355917
Conc: 46.68 ng/ml



#13 Dieldrin

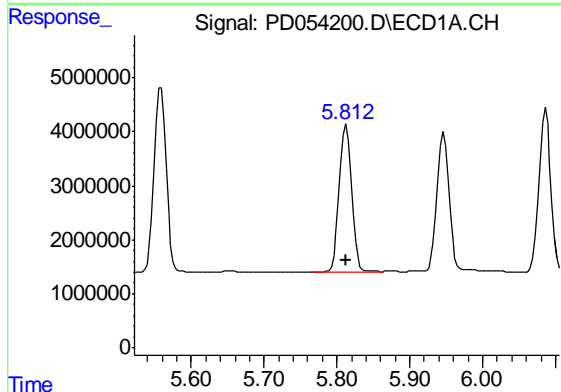
R.T.: 5.559 min
 Delta R.T.: -0.001 min
 Response: 39197851
 Conc: 48.27 ng/ml

Instrument :
 ECD_D
 ClientSampled :
 PSTDCCC050



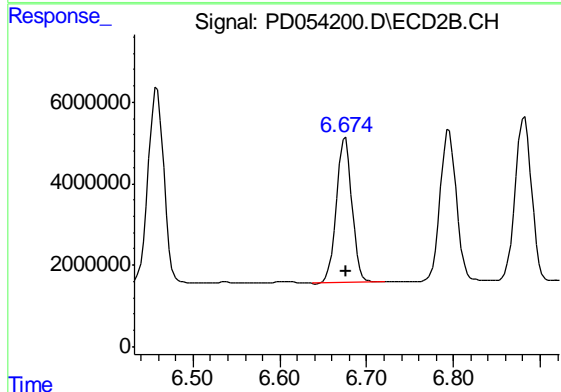
#13 Dieldrin

R.T.: 6.458 min
 Delta R.T.: 0.000 min
 Response: 60225387
 Conc: 47.93 ng/ml



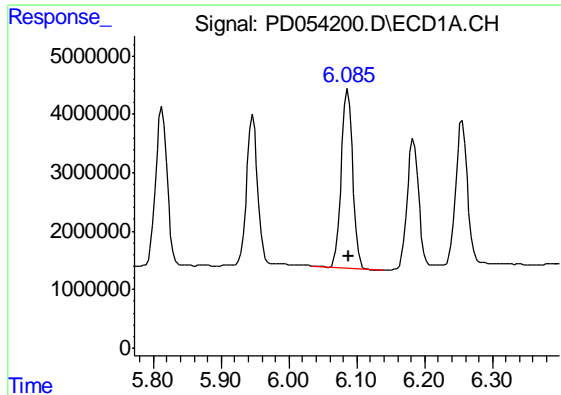
#14 Endrin

R.T.: 5.813 min
 Delta R.T.: 0.000 min
 Response: 31694430
 Conc: 42.32 ng/ml



#14 Endrin

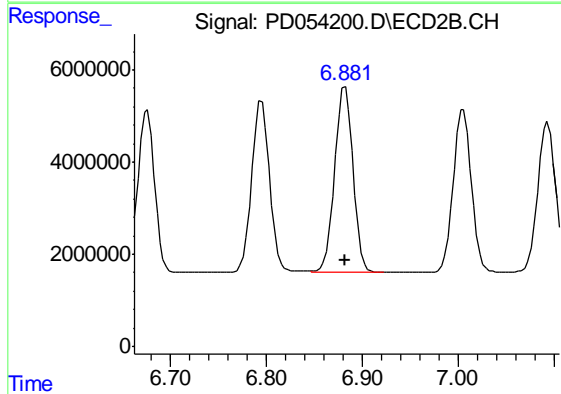
R.T.: 6.676 min
 Delta R.T.: 0.000 min
 Response: 44411148
 Conc: 42.37 ng/ml



#15 Endosulfan II

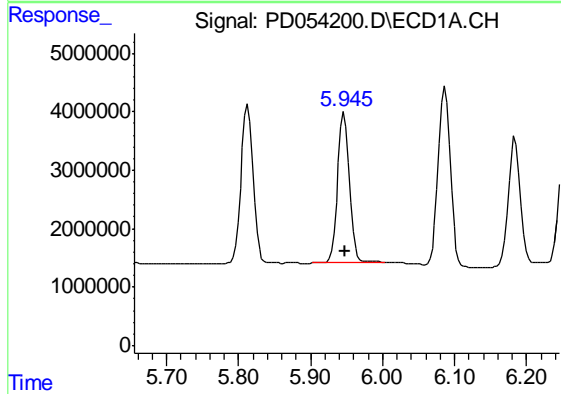
R.T.: 6.087 min
 Delta R.T.: -0.001 min
 Response: 35107806
 Conc: 46.92 ng/ml

Instrument :
 ECD_D
 ClientSampleId :
 PSTDCCC050



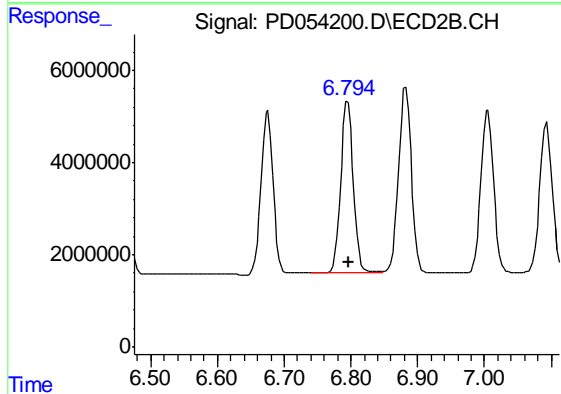
#15 Endosulfan II

R.T.: 6.882 min
 Delta R.T.: 0.000 min
 Response: 53372320
 Conc: 46.16 ng/ml



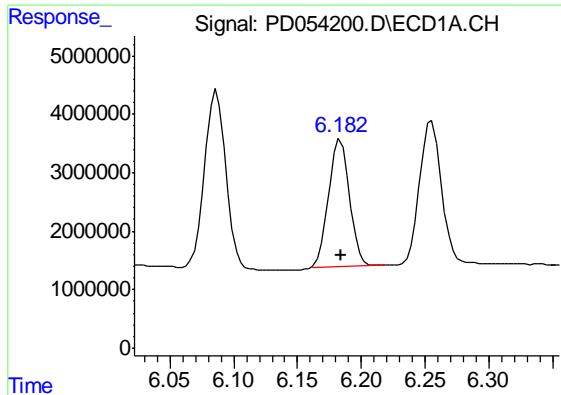
#16 4,4'-DDD

R.T.: 5.947 min
 Delta R.T.: -0.001 min
 Response: 29017701
 Conc: 48.48 ng/ml



#16 4,4'-DDD

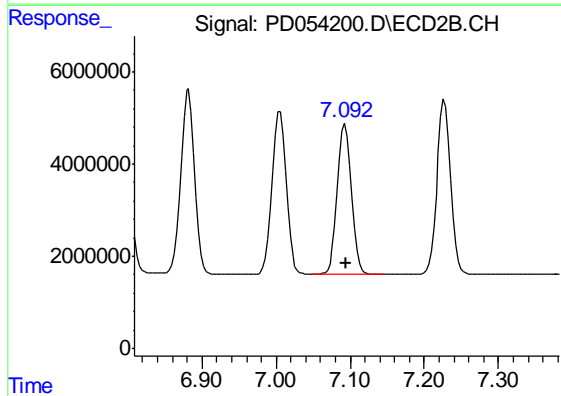
R.T.: 6.795 min
 Delta R.T.: 0.000 min
 Response: 48573336
 Conc: 48.08 ng/ml



#17 4,4'-DDT

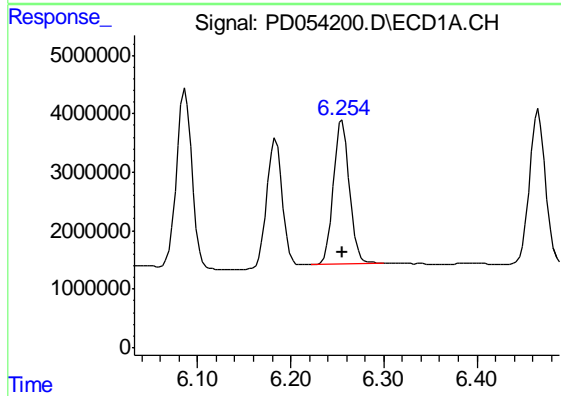
R.T.: 6.184 min
Delta R.T.: 0.000 min
Response: 24924257
Conc: 43.28 ng/ml

Instrument :
ECD_D
ClientSampleId :
PSTDCCC050



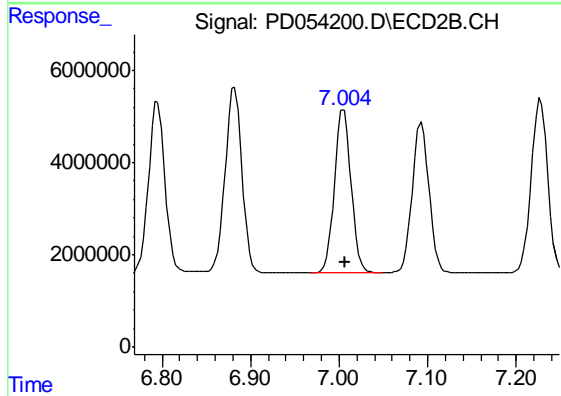
#17 4,4'-DDT

R.T.: 7.093 min
Delta R.T.: -0.001 min
Response: 43037631
Conc: 43.69 ng/ml



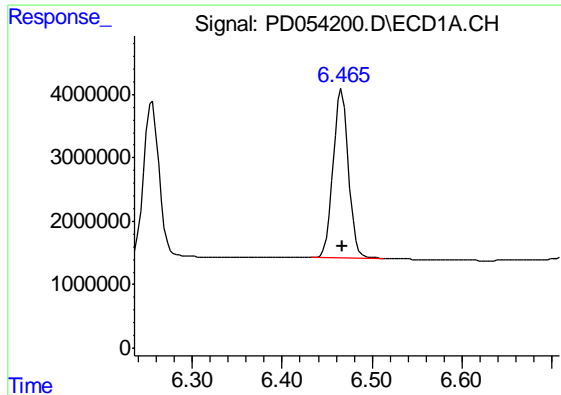
#18 Endrin aldehyde

R.T.: 6.255 min
Delta R.T.: 0.000 min
Response: 29635219
Conc: 46.66 ng/ml



#18 Endrin aldehyde

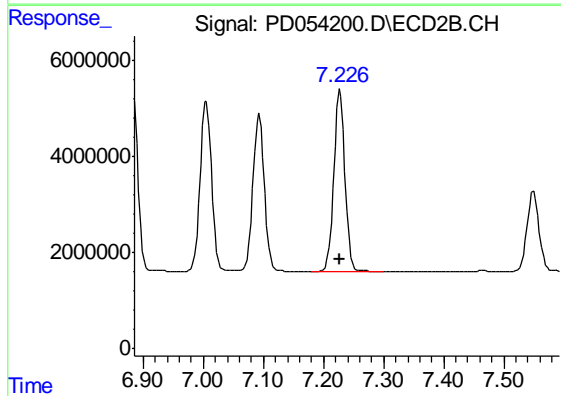
R.T.: 7.005 min
Delta R.T.: -0.001 min
Response: 46667917
Conc: 46.92 ng/ml



#19 Endosulfan Sulfate

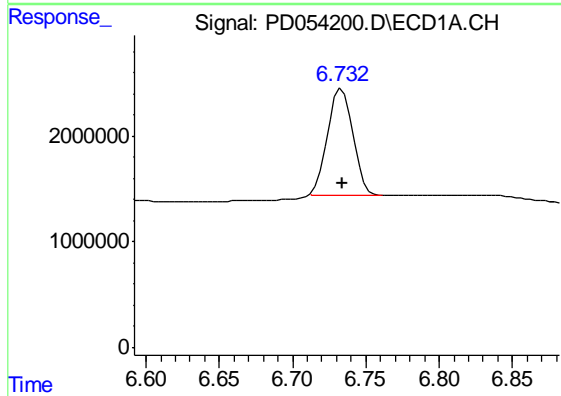
R.T.: 6.466 min
 Delta R.T.: 0.000 min
 Response: 31597626
 Conc: 44.95 ng/ml

Instrument :
 ECD_D
 ClientSampleId :
 PSTDCCC050



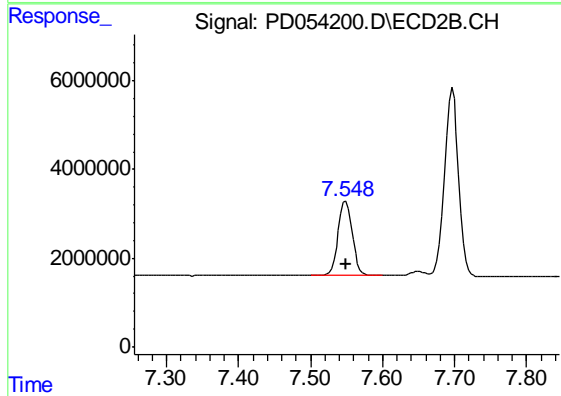
#19 Endosulfan Sulfate

R.T.: 7.228 min
 Delta R.T.: 0.000 min
 Response: 49175753
 Conc: 45.25 ng/ml



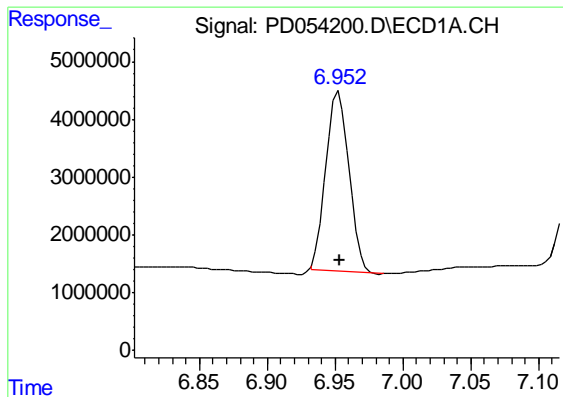
#20 Methoxychlor

R.T.: 6.734 min
 Delta R.T.: 0.000 min
 Response: 12146729
 Conc: 42.50 ng/ml



#20 Methoxychlor

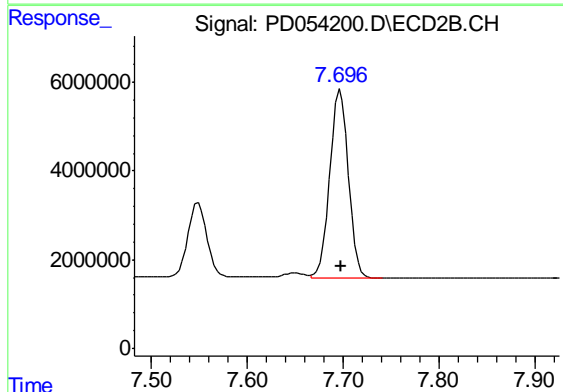
R.T.: 7.549 min
 Delta R.T.: 0.000 min
 Response: 22989357
 Conc: 42.85 ng/ml



#21 Endrin ketone

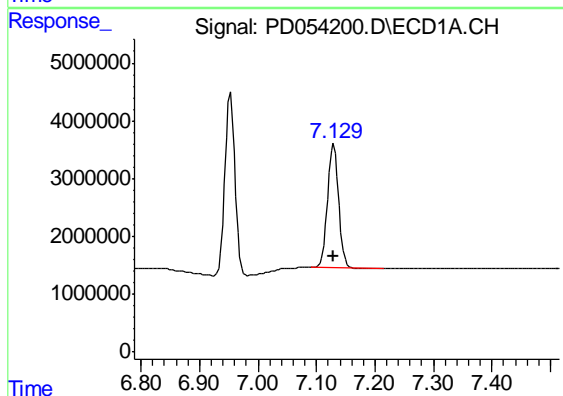
R.T.: 6.953 min
 Delta R.T.: 0.000 min
 Response: 36802758
 Conc: 45.92 ng/ml

Instrument :
 ECD_D
 ClientSampleId :
 PSTDCCC050



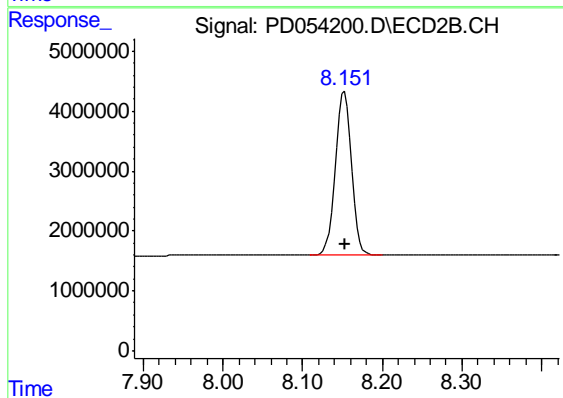
#21 Endrin ketone

R.T.: 7.697 min
 Delta R.T.: 0.000 min
 Response: 56829183
 Conc: 46.74 ng/ml



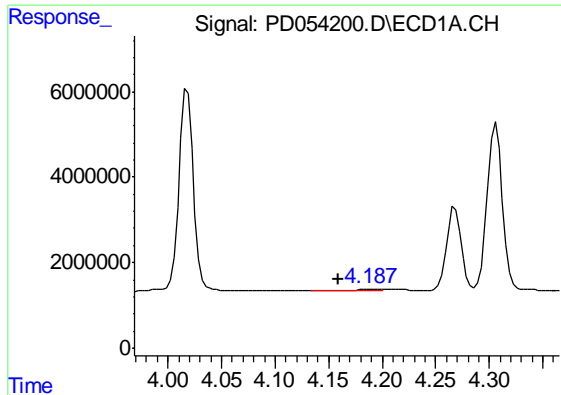
#22 Mirex

R.T.: 7.130 min
 Delta R.T.: 0.000 min
 Response: 28391791
 Conc: 43.64 ng/ml



#22 Mirex

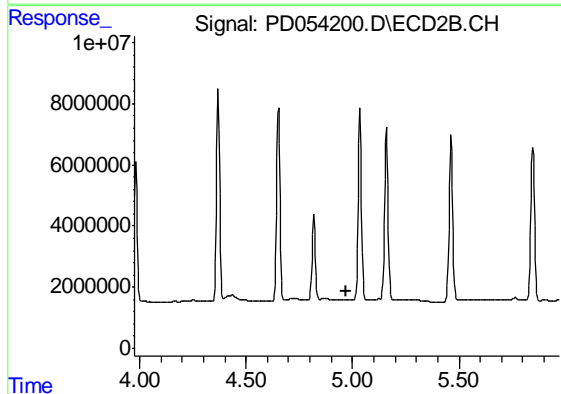
R.T.: 8.152 min
 Delta R.T.: 0.000 min
 Response: 39466585
 Conc: 42.82 ng/ml



#23 Chlordane-1

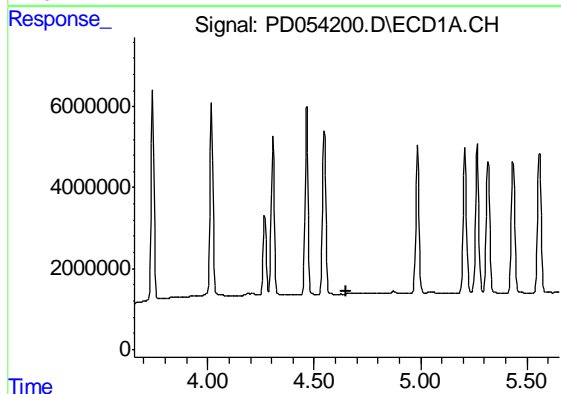
R.T.: 4.189 min
 Delta R.T.: 0.029 min
 Response: 503396
 Conc: 25.44 ng/ml

Instrument :
 ECD_D
 ClientSampled :
 PSTDCCC050



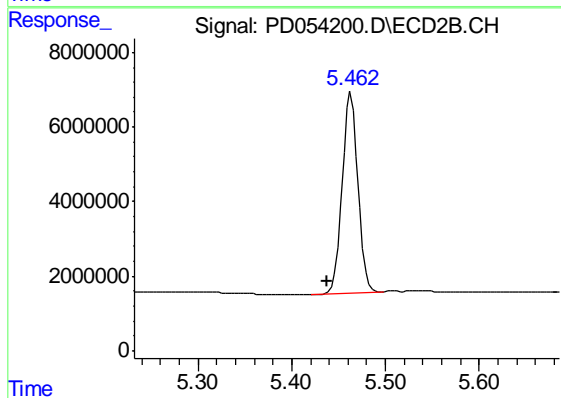
#23 Chlordane-1

R.T.: 0.000 min
 Exp R.T. : 4.973 min
 Response: 0
 Conc: N.D.



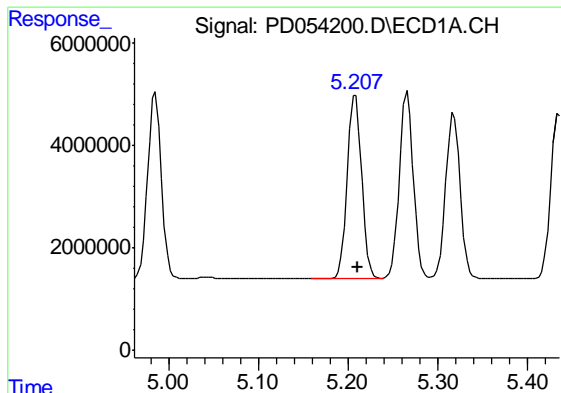
#24 Chlordane-2

R.T.: 0.000 min
 Exp R.T. : 4.652 min
 Response: 0
 Conc: N.D.



#24 Chlordane-2

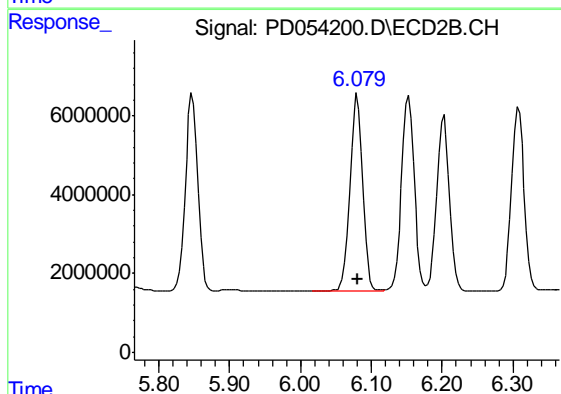
R.T.: 5.463 min
 Delta R.T.: 0.025 min
 Response: 62717885
 Conc: 1479.77 ng/ml



#25 Chlordane-3

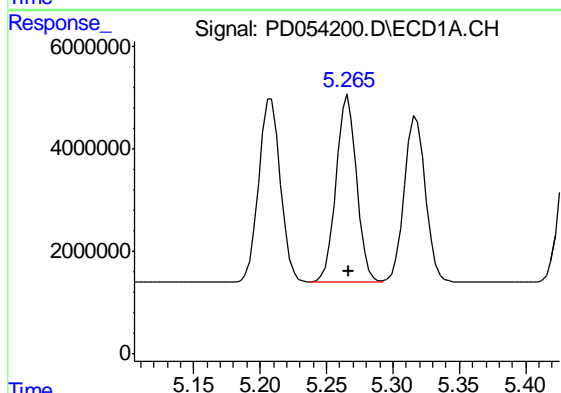
R.T.: 5.208 min
Delta R.T.: -0.002 min
Response: 40199482
Conc: 505.45 ng/ml

Instrument :
ECD_D
ClientSampleId :
PSTDCCC050



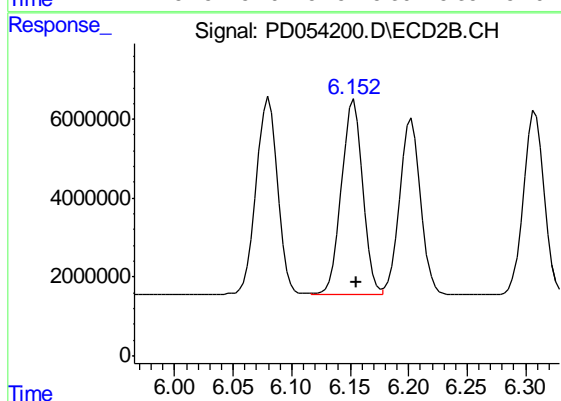
#25 Chlordane-3

R.T.: 6.080 min
Delta R.T.: -0.001 min
Response: 62188831
Conc: 355.13 ng/ml



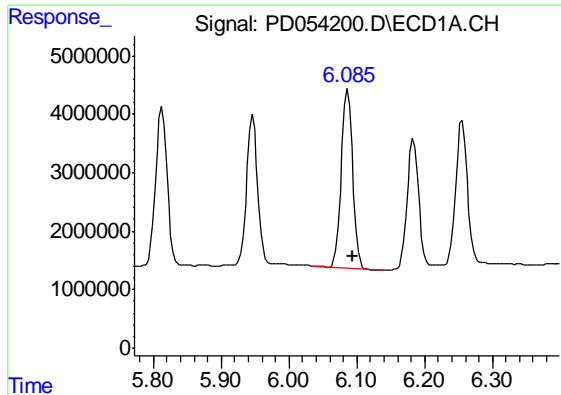
#26 Chlordane-4

R.T.: 5.266 min
Delta R.T.: 0.000 min
Response: 39706609
Conc: 576.93 ng/ml



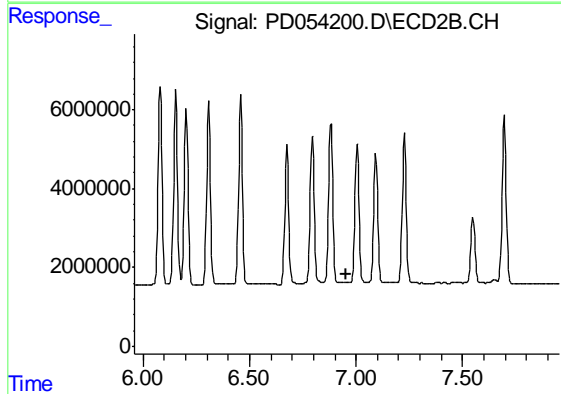
#26 Chlordane-4

R.T.: 6.153 min
Delta R.T.: -0.002 min
Response: 61284159
Conc: 289.52 ng/ml

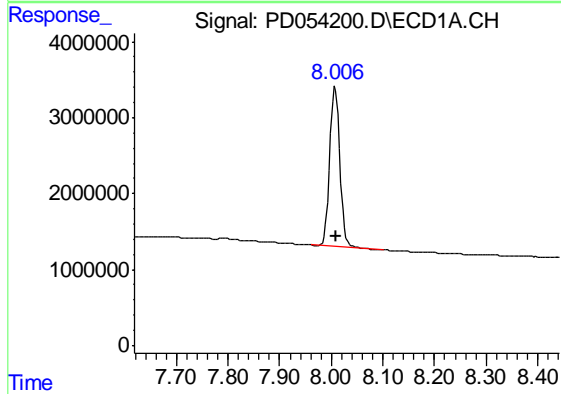


#27 Chlordane-5
 R.T.: 6.087 min
 Delta R.T.: -0.006 min
 Response: 35107806
 Conc: 1314.39 ng/ml

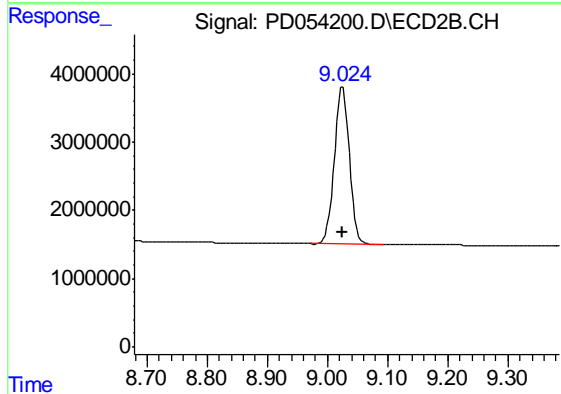
Instrument :
 ECD_D
 ClientSampleId :
 PSTDCCC050



#27 Chlordane-5
 R.T.: 0.000 min
 Exp R.T. : 6.956 min
 Response: 0
 Conc: N.D.



#28 Decachlorobiphenyl
 R.T.: 8.008 min
 Delta R.T.: -0.001 min
 Response: 29075699
 Conc: 43.19 ng/ml



#28 Decachlorobiphenyl
 R.T.: 9.025 min
 Delta R.T.: 0.000 min
 Response: 40194702
 Conc: 43.36 ng/ml