

Data Path : Z:\pestpcbsrv\HPCHEM1\ECD\_D\Data\PD081224\  
 Data File : PD084349.D  
 Signal(s) : Signal #1: ECD1A.ch Signal #2: ECD2B.ch  
 Acq On : 13 Aug 2024 08:02  
 Operator : AR\AJ  
 Sample : PIBLK048  
 Misc :  
 ALS Vial : 19 Sample Multiplier: 1

Instrument :  
 ECD\_D  
 ClientSampleId :

Integration File signal 1: autoint1.e  
 Integration File signal 2: autoint2.e  
 Quant Time: Aug 13 08:21:49 2024  
 Quant Method : Z:\pestpcbsrv\HPCHEM1\ECD\_D\Method\PD081224CLP.M  
 Quant Title : GC Extractables  
 QLast Update : Mon Aug 12 16:40:36 2024  
 Response via : Initial Calibration  
 Integrator: ChemStation

Volume Inj. : 1 µl  
 Signal #1 Phase : ZB-MR1 Signal #2 Phase: ZB-MR2  
 Signal #1 Info : 30M x 0.32mm x0.5 Signal #2 Info : 30M x 0.32mm x 0.25µm

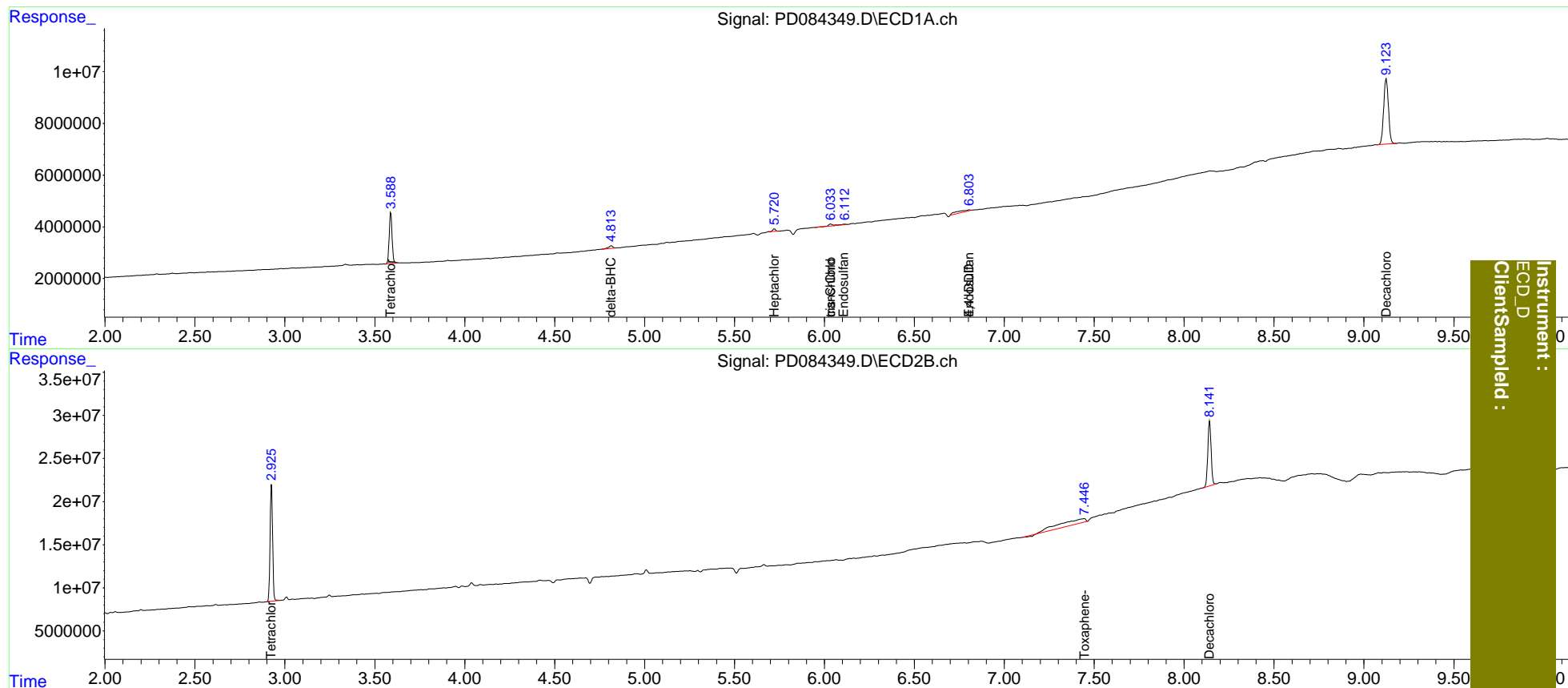
Compound	RT#1	RT#2	Resp#1	Resp#2	ng/ml	ng/ml
-----						
System Monitoring Compounds						
1) SA Tetrachlo...	3.589	2.926	22068506	132.9E6	26.323	25.238
2) SA Decachlor...	9.124	8.142	46147960	96915362	26.532	25.790
Target Compounds						
7) B delta-BHC	4.815	0.000	1711099	0	0.991	N.D. #
8) B Heptachlo...	5.722	0.000	1053345	0	0.620	N.D. #
9) A Endosulfan I	6.112	0.000	599814	0	0.377	N.D. #
10) B trans-Chl...	6.035f	0.000	1203171	0	0.729	N.D. #
11) B cis-Chlor...	6.035	0.000	1203171	0	0.699	N.D. #
15) B Endosulfa...	6.805	0.000	3740425	0	2.269	N.D. #
16) A 4,4'-DDD	6.805f	0.000	3740425	0	2.908	N.D. #
26) Toxaphene-5	0.000	7.446f	0	60267134	N.D.	1098.988

(f)=RT Delta > 1/2 Window (#)=Amounts differ by > 25% (m)=manual int.

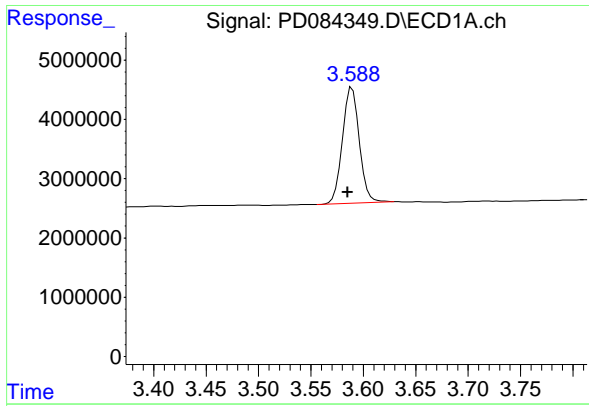
Data Path : Z:\pestpcbsrv\HPCHEM1\ECD\_D\Data\PD081224\  
 Data File : PD084349.D  
 Signal(s) : Signal #1: ECD1A.ch Signal #2: ECD2B.ch  
 Acq On : 13 Aug 2024 08:02  
 Operator : AR\AJ  
 Sample : PIBLK048  
 Misc :  
 ALS Vial : 19 Sample Multiplier: 1

Integration File signal 1: autoint1.e  
 Integration File signal 2: autoint2.e  
 Quant Time: Aug 13 08:21:49 2024  
 Quant Method : Z:\pestpcbsrv\HPCHEM1\ECD\_D\Method\PD081224CLP.M  
 Quant Title : GC Extractables  
 QLast Update : Mon Aug 12 16:40:36 2024  
 Response via : Initial Calibration  
 Integrator: ChemStation

Volume Inj. : 1 µl  
 Signal #1 Phase : ZB-MR1 Signal #2 Phase: ZB-MR2  
 Signal #1 Info : 30M x 0.32mm x 0.5 Signal #2 Info : 30M x 0.32mm x 0.25µm



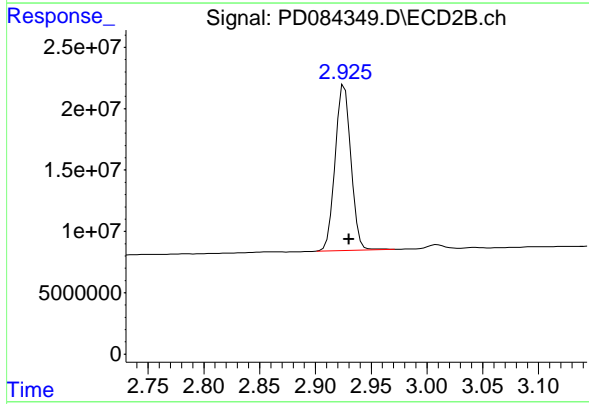
Instrument : ECD\_D  
 Client Sampled :



#1 Tetrachloro-m-xylene

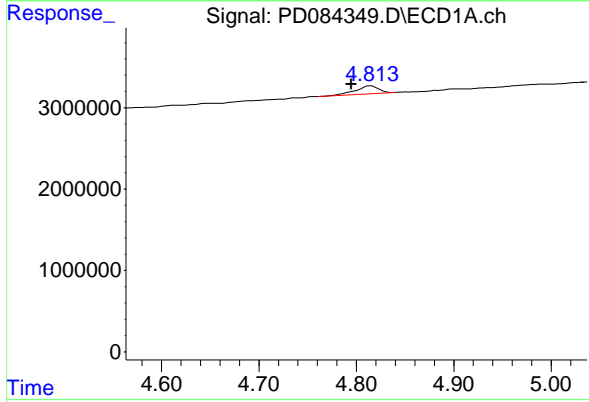
R.T.: 3.589 min  
 Delta R.T.: 0.004 min  
 Response: 22068506  
 Conc: 26.32 ng/ml

Instrument :  
 ECD\_D  
 ClientSampleId :



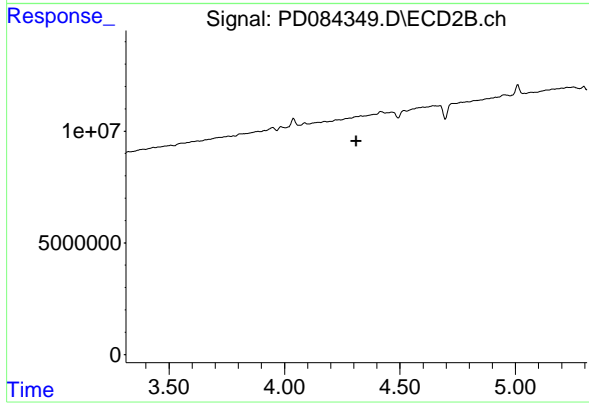
#1 Tetrachloro-m-xylene

R.T.: 2.926 min  
 Delta R.T.: -0.004 min  
 Response: 132857217  
 Conc: 25.24 ng/ml



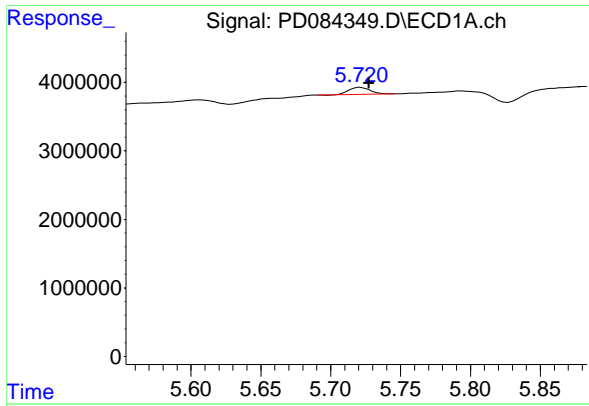
#7 delta-BHC

R.T.: 4.815 min  
 Delta R.T.: 0.020 min  
 Response: 1711099  
 Conc: 0.99 ng/ml



#7 delta-BHC

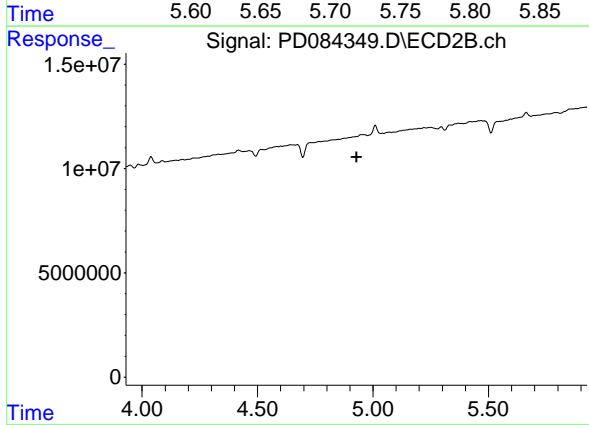
R.T.: 0.000 min  
 Exp R.T. : 4.311 min  
 Response: 0  
 Conc: N.D.



#8 Heptachlor epoxide

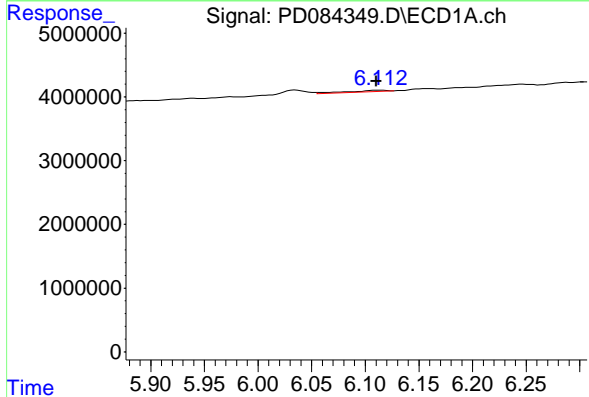
R.T.: 5.722 min  
 Delta R.T.: -0.006 min  
 Response: 1053345  
 Conc: 0.62 ng/ml

Instrument :  
 ECD\_D  
 ClientSampleId :



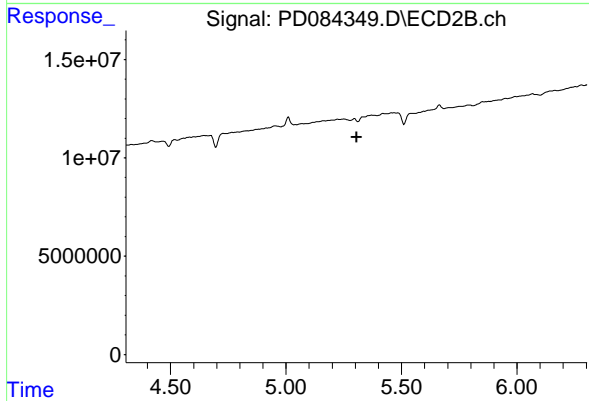
#8 Heptachlor epoxide

R.T.: 0.000 min  
 Exp R.T. : 4.930 min  
 Response: 0  
 Conc: N.D.



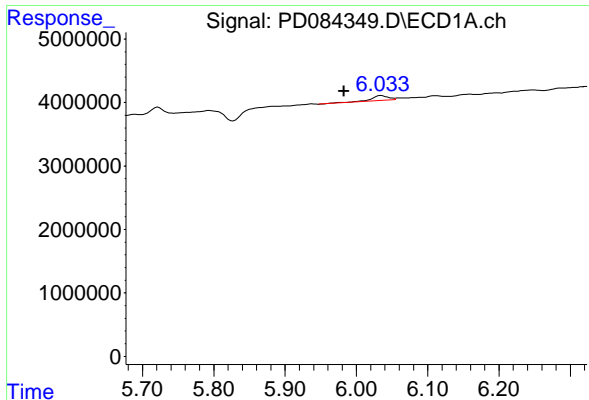
#9 Endosulfan I

R.T.: 6.112 min  
 Delta R.T.: 0.002 min  
 Response: 599814  
 Conc: 0.38 ng/ml



#9 Endosulfan I

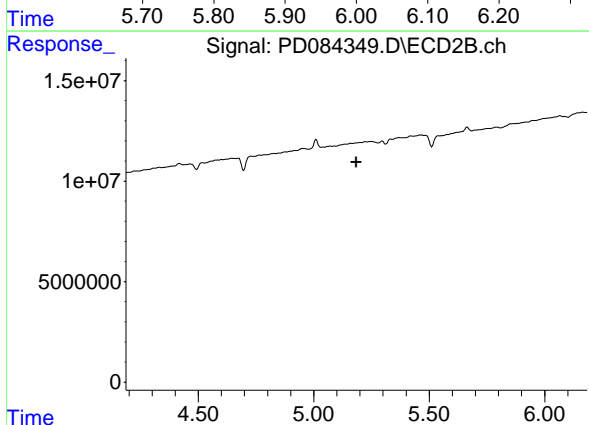
R.T.: 0.000 min  
 Exp R.T. : 5.306 min  
 Response: 0  
 Conc: N.D.



#10 trans-Chlordane

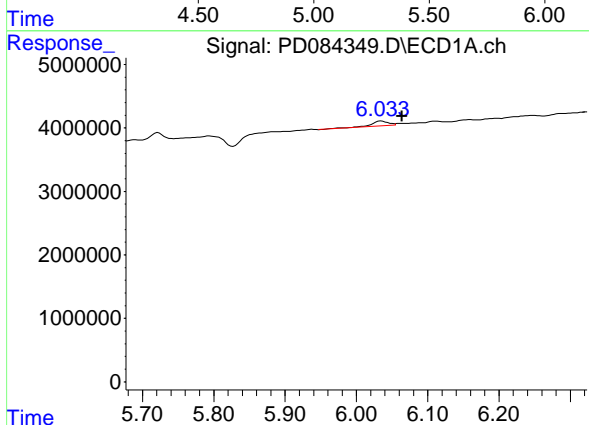
R.T.: 6.035 min  
 Delta R.T.: 0.052 min  
 Response: 1203171  
 Conc: 0.73 ng/ml

Instrument :  
 ECD\_D  
 ClientSampleId :



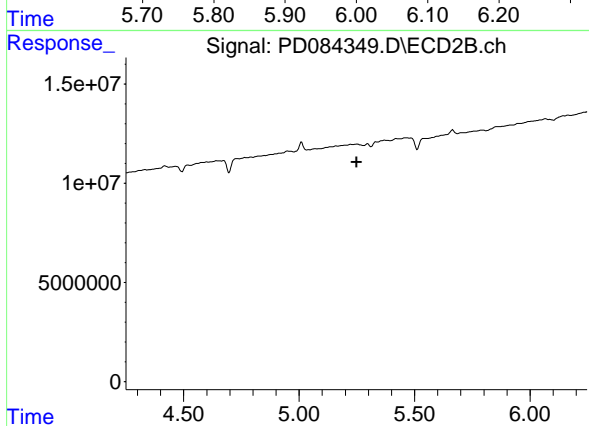
#10 trans-Chlordane

R.T.: 0.000 min  
 Exp R.T. : 5.184 min  
 Response: 0  
 Conc: N.D.



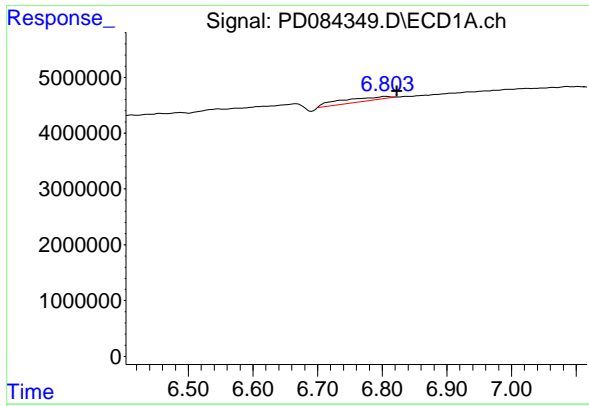
#11 cis-Chlordane

R.T.: 6.035 min  
 Delta R.T.: -0.029 min  
 Response: 1203171  
 Conc: 0.70 ng/ml



#11 cis-Chlordane

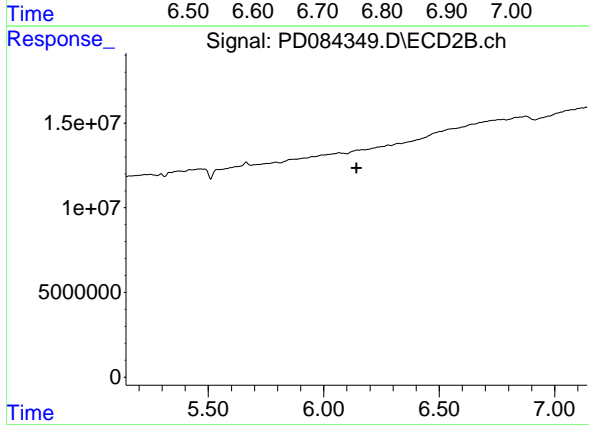
R.T.: 0.000 min  
 Exp R.T. : 5.249 min  
 Response: 0  
 Conc: N.D.



#15 Endosulfan II

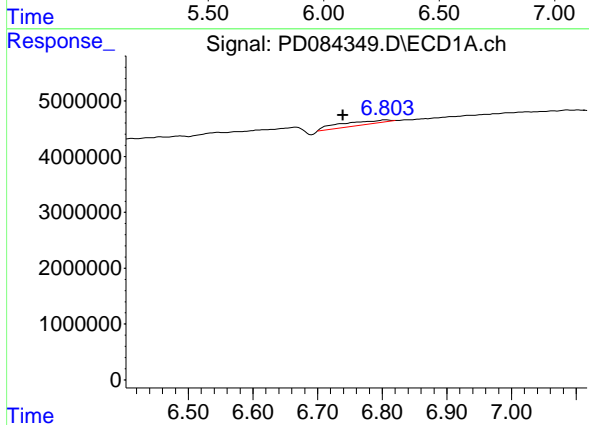
R.T.: 6.805 min  
 Delta R.T.: -0.018 min  
 Response: 3740425  
 Conc: 2.27 ng/ml

Instrument :  
 ECD\_D  
 ClientSampleId :



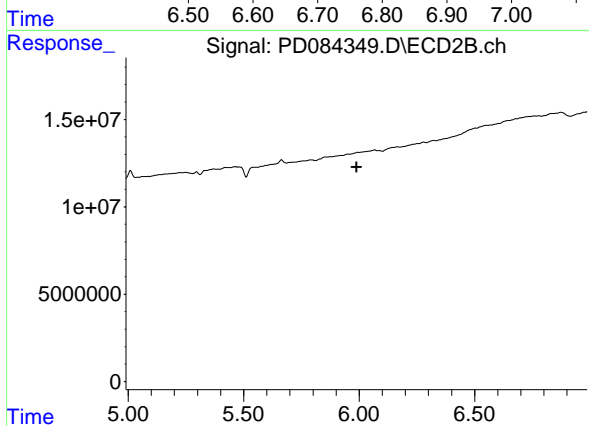
#15 Endosulfan II

R.T.: 0.000 min  
 Exp R.T. : 6.142 min  
 Response: 0  
 Conc: N.D.



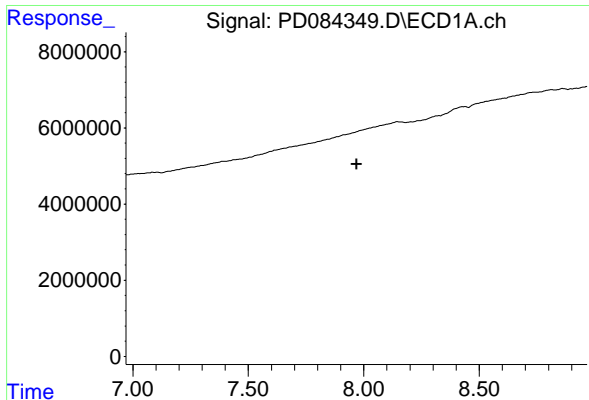
#16 4,4'-DDD

R.T.: 6.805 min  
 Delta R.T.: 0.066 min  
 Response: 3740425  
 Conc: 2.91 ng/ml



#16 4,4'-DDD

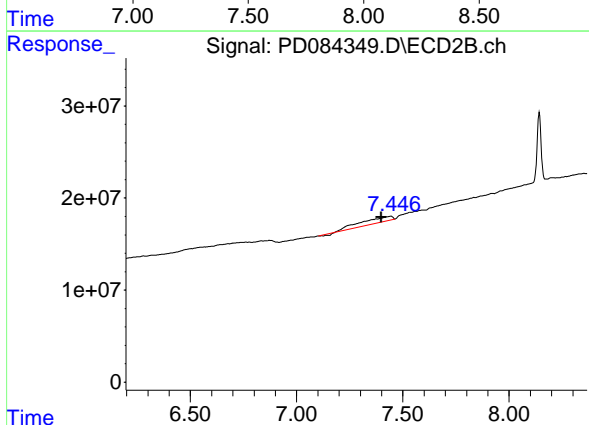
R.T.: 0.000 min  
 Exp R.T. : 5.990 min  
 Response: 0  
 Conc: N.D.



#26 Toxaphene-5

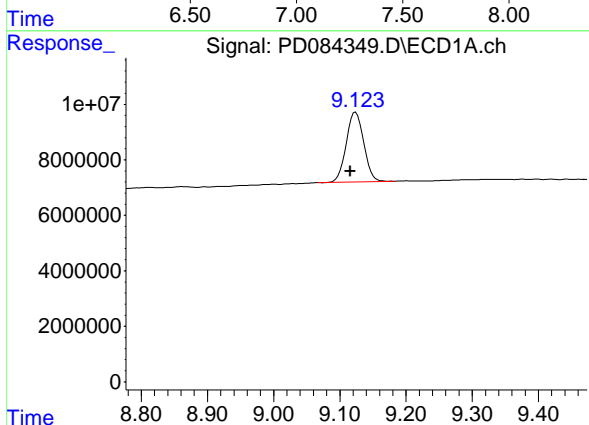
R.T.: 0.000 min  
 Exp R.T.: 7.968 min  
 Response: 0  
 Conc: N.D.

Instrument :  
 ECD\_D  
 ClientSampleId :



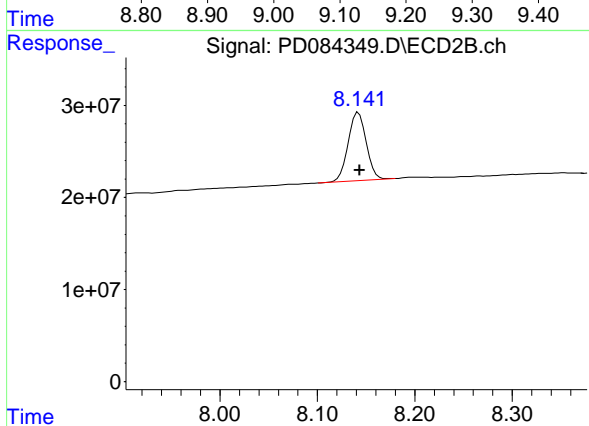
#26 Toxaphene-5

R.T.: 7.446 min  
 Delta R.T.: 0.047 min  
 Response: 60267134  
 Conc: 1098.99 ng/ml



#27 Decachlorobiphenyl

R.T.: 9.124 min  
 Delta R.T.: 0.008 min  
 Response: 46147960  
 Conc: 26.53 ng/ml



#27 Decachlorobiphenyl

R.T.: 8.142 min  
 Delta R.T.: -0.001 min  
 Response: 96915362  
 Conc: 25.79 ng/ml