

Data Path : Z:\pestpcbsrv\HPCHEM1\ECD_D\Data\PD090323\
 Data File : PD077566.D
 Signal(s) : Signal #1: ECD1A.ch Signal #2: ECD2B.ch
 Acq On : 01 Sep 2023 13:48
 Operator : AR\AJ
 Sample : PSTDICC075
 Misc :
 ALS Vial : 6 Sample Multiplier: 1

Instrument :
 ECD_D
 ClientSampleId :
 PSTDICC075

Integration File signal 1: autoint1.e
 Integration File signal 2: autoint2.e
 Quant Time: Sep 01 15:46:43 2023
 Quant Method : Z:\pestpcbsrv\HPCHEM1\ECD_D\Method\PD090323.M
 Quant Title : GC Extractables
 QLast Update : Fri Sep 01 15:45:28 2023
 Response via : Initial Calibration
 Integrator: ChemStation

Volume Inj. : 1 µl
 Signal #1 Phase : ZB-MR2 Signal #2 Phase: ZB-MR2
 Signal #1 Info : 30M x 0.32mm x0.5 Signal #2 Info : 30M x 0.32mm x 0.25µm

Compound	RT#1	RT#2	Resp#1	Resp#2	ng/ml	ng/ml

System Monitoring Compounds						
1) SA Tetrachlo...	3.542	2.760	184.2E6	118.1E6	73.681	75.048
28) SA Decachlor...	9.082	7.900	215.2E6	122.8E6	72.919	72.766
Target Compounds						
2) A alpha-BHC	3.999	3.261	319.2E6	179.5E6	75.854	75.904
3) MA gamma-BHC...	4.333	3.591	303.1E6	171.9E6	75.713	75.243
4) MA Heptachlor	4.923	3.930	296.0E6	171.1E6	75.432	75.124
5) MB Aldrin	5.266	4.210	304.2E6	172.6E6	75.382	74.919
6) B beta-BHC	4.530	3.888	114.4E6	64964385	72.796	73.080
7) B delta-BHC	4.778	4.118	283.7E6	167.0E6	75.984	75.116
8) B Heptachlo...	5.693	4.712	261.9E6	152.7E6	74.338	74.651
9) A Endosulfan I	6.080	5.082	243.1E6	141.3E6	74.456	75.348
10) B gamma-Chl...	5.951	4.962	263.0E6	151.7E6	74.928	75.020
11) B alpha-Chl...	6.030	5.027	263.1E6	151.1E6	74.601	74.691
12) B 4,4'-DDE	6.202	5.215	245.3E6	138.3E6	75.802	74.904
13) MA Dieldrin	6.357	5.347	268.1E6	156.3E6	75.402	75.075
14) MA Endrin	6.587	5.623	226.8E6	137.6E6	74.850	74.816
15) B Endosulfa...	6.806	5.917	221.6E6	128.2E6	73.916	74.447
16) A 4,4'-DDD	6.721	5.770	193.1E6	106.5E6	75.479	74.869
17) MA 4,4'-DDT	7.036	6.021	203.3E6	113.3E6	76.161	76.407
18) B Endrin al...	6.937	6.097	170.9E6	99113947	73.871	73.778
19) B Endosulfa...	7.173	6.319	206.0E6	119.4E6	74.175	74.092
20) A Methoxychlor	7.512	6.597	111.5E6	57963319	73.280	73.306
21) B Endrin ke...	7.658	6.827	239.8E6	142.4E6	74.463	74.195
22) Mirex	8.133	7.008	171.1E6	110.6E6	73.204	72.945

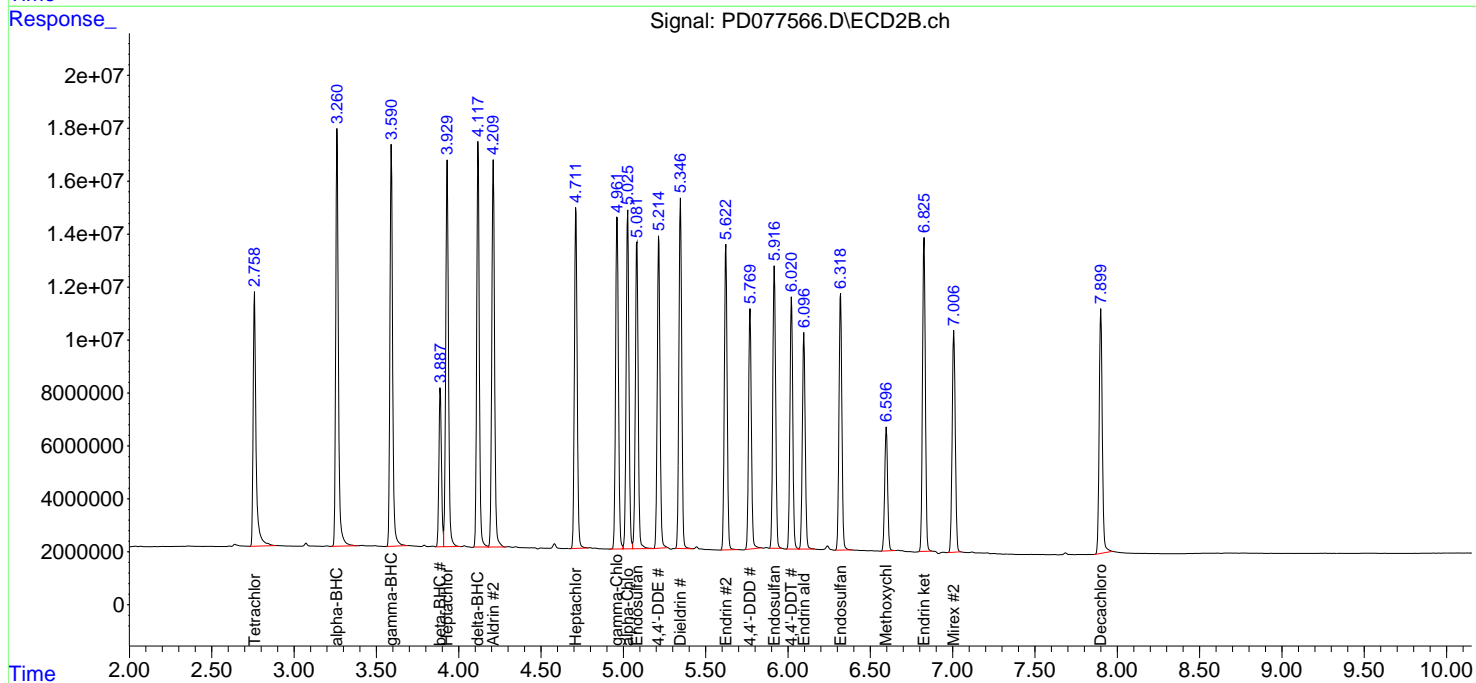
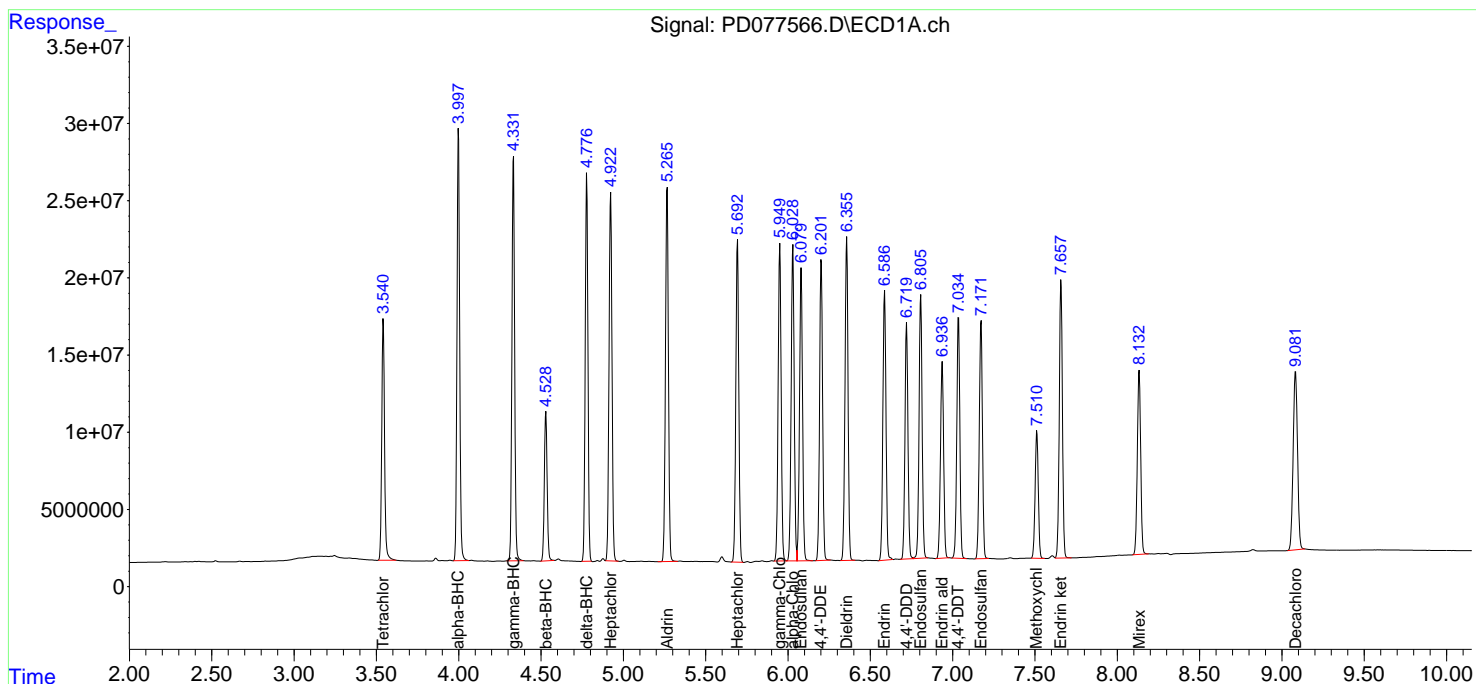
(f)=RT Delta > 1/2 Window (#)=Amounts differ by > 25% (m)=manual int.

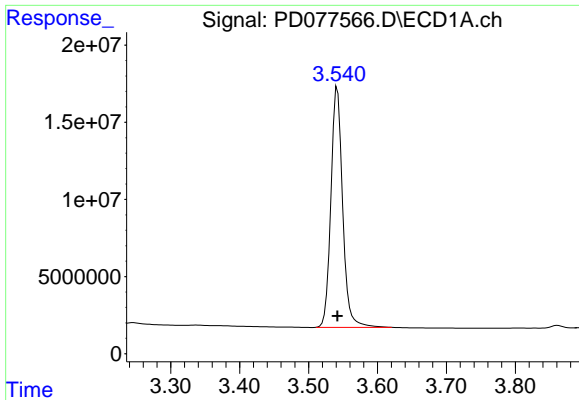
Data Path : Z:\pestpcbsrv\HPCHEM1\ECD_D\Data\PD090323\
 Data File : PD077566.D
 Signal(s) : Signal #1: ECD1A.ch Signal #2: ECD2B.ch
 Acq On : 01 Sep 2023 13:48
 Operator : AR\AJ
 Sample : PSTDICC075
 Misc :
 ALS Vial : 6 Sample Multiplier: 1

Instrument :
 ECD_D
ClientSampleId :
 PSTDICC075

Integration File signal 1: autoint1.e
 Integration File signal 2: autoint2.e
 Quant Time: Sep 01 15:46:43 2023
 Quant Method : Z:\pestpcbsrv\HPCHEM1\ECD_D\Method\PD090323.M
 Quant Title : GC Extractables
 QLast Update : Fri Sep 01 15:45:28 2023
 Response via : Initial Calibration
 Integrator: ChemStation

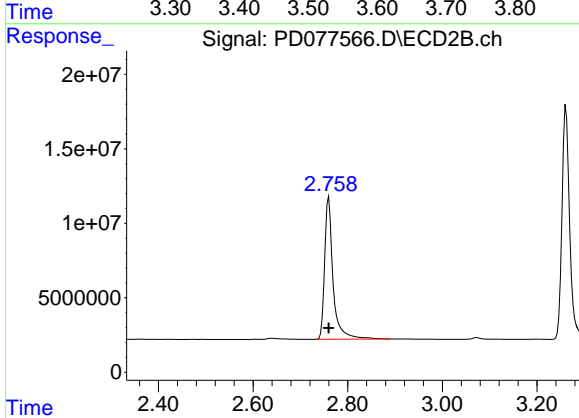
Volume Inj. : 1 µl
 Signal #1 Phase : ZB-MR1 Signal #2 Phase: ZB-MR2
 Signal #1 Info : 30M x 0.32mm x0.5 Signal #2 Info : 30M x 0.32mm x 0.25µm



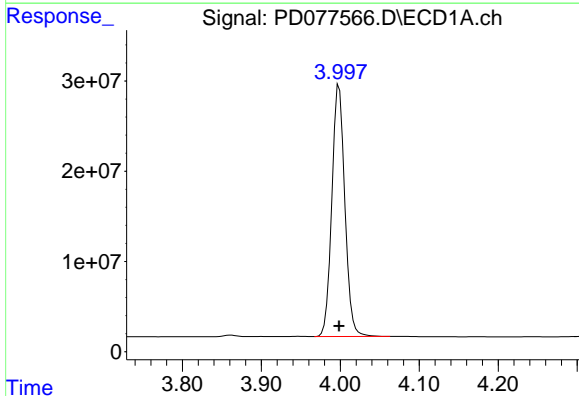


#1 Tetrachloro-m-xylene
 R.T.: 3.542 min
 Delta R.T.: 0.000 min
 Response: 184175648
 Conc: 73.68 ng/ml

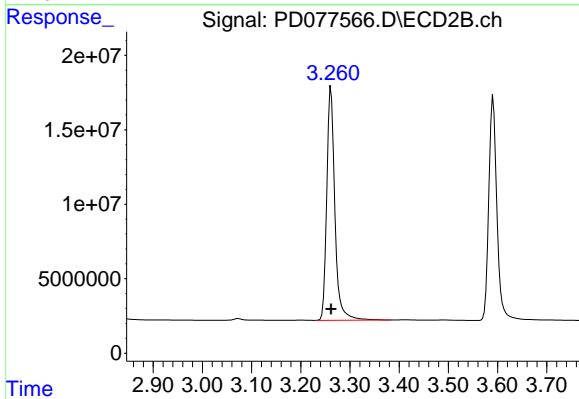
Instrument :
 ECD_D
 ClientSampleId :
 PSTDICC075



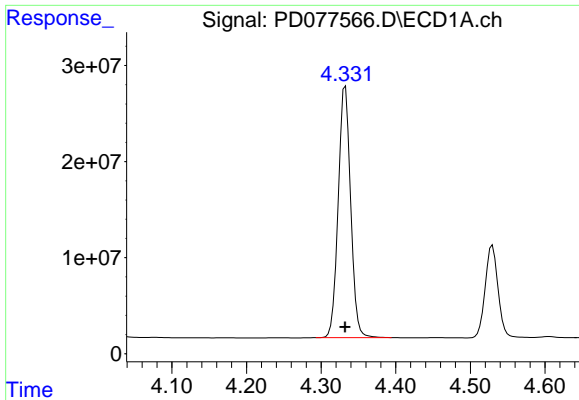
#1 Tetrachloro-m-xylene
 R.T.: 2.760 min
 Delta R.T.: 0.000 min
 Response: 118139374
 Conc: 75.05 ng/ml



#2 alpha-BHC
 R.T.: 3.999 min
 Delta R.T.: 0.000 min
 Response: 319210991
 Conc: 75.85 ng/ml



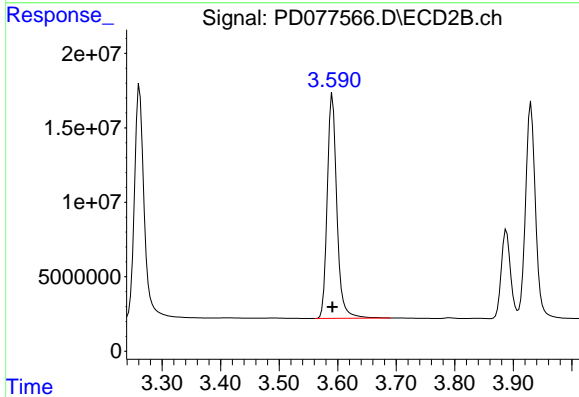
#2 alpha-BHC
 R.T.: 3.261 min
 Delta R.T.: 0.000 min
 Response: 179466911
 Conc: 75.90 ng/ml



#3 gamma-BHC (Lindane)

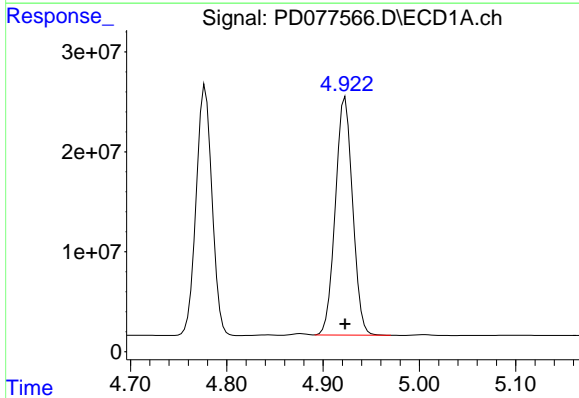
R.T.: 4.333 min
 Delta R.T.: 0.000 min
 Response: 303086471
 Conc: 75.71 ng/ml

Instrument :
 ECD_D
 ClientSampleId :
 PSTDICC075



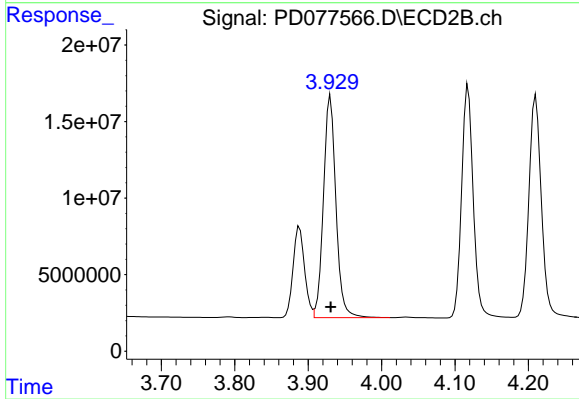
#3 gamma-BHC (Lindane)

R.T.: 3.591 min
 Delta R.T.: 0.000 min
 Response: 171863428
 Conc: 75.24 ng/ml



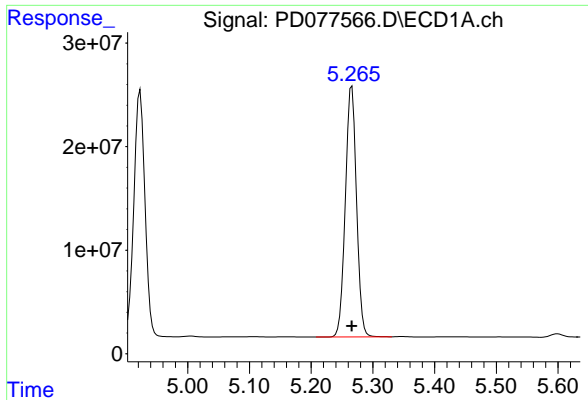
#4 Heptachlor

R.T.: 4.923 min
 Delta R.T.: 0.000 min
 Response: 295958279
 Conc: 75.43 ng/ml



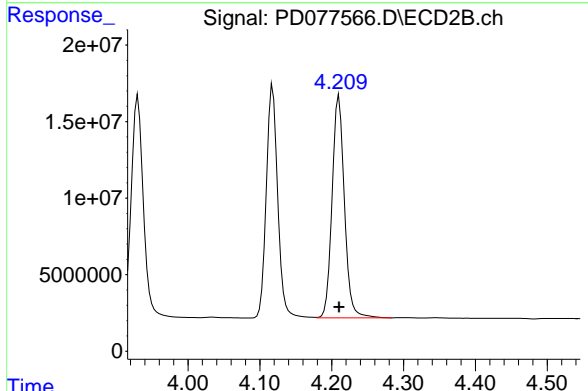
#4 Heptachlor

R.T.: 3.930 min
 Delta R.T.: 0.000 min
 Response: 171130394
 Conc: 75.12 ng/ml

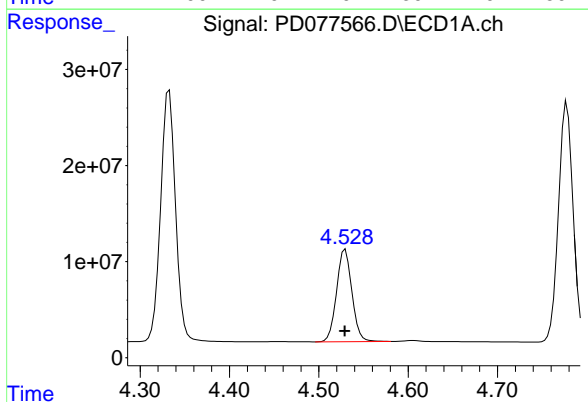


#5 Aldrin
 R.T.: 5.266 min
 Delta R.T.: 0.000 min
 Response: 304227136
 Conc: 75.38 ng/ml

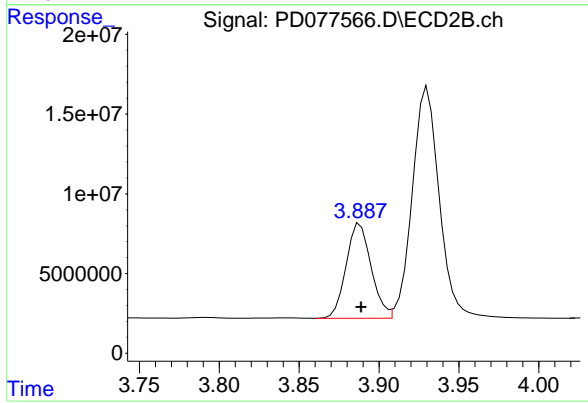
Instrument : ECD_D
 ClientSampleId : PSTDICC075



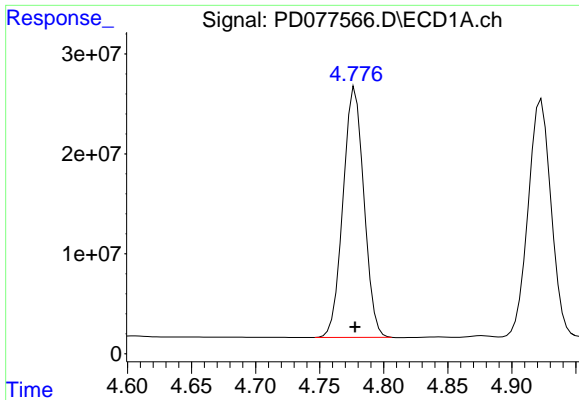
#5 Aldrin
 R.T.: 4.210 min
 Delta R.T.: 0.000 min
 Response: 172620320
 Conc: 74.92 ng/ml



#6 beta-BHC
 R.T.: 4.530 min
 Delta R.T.: 0.000 min
 Response: 114417930
 Conc: 72.80 ng/ml



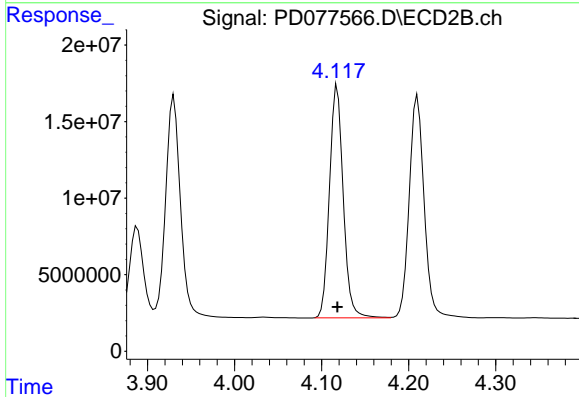
#6 beta-BHC
 R.T.: 3.888 min
 Delta R.T.: 0.000 min
 Response: 64964385
 Conc: 73.08 ng/ml



#7 delta-BHC

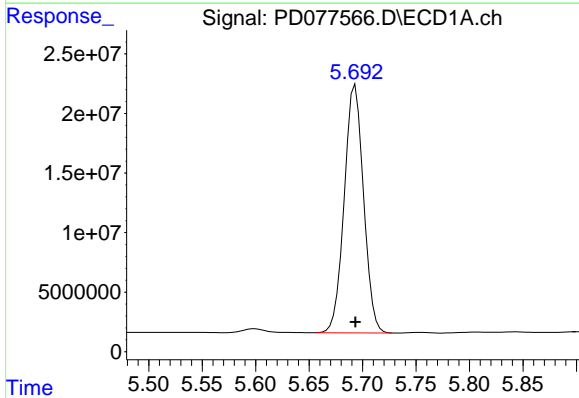
R.T.: 4.778 min
 Delta R.T.: 0.000 min
 Response: 283732506
 Conc: 75.98 ng/ml

Instrument :
 ECD_D
 ClientSampleId :
 PSTDICC075



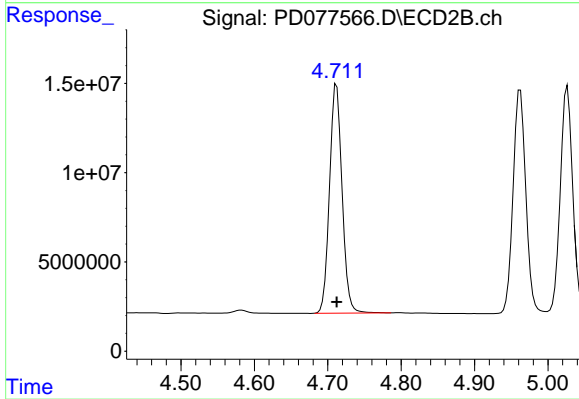
#7 delta-BHC

R.T.: 4.118 min
 Delta R.T.: 0.000 min
 Response: 167017495
 Conc: 75.12 ng/ml



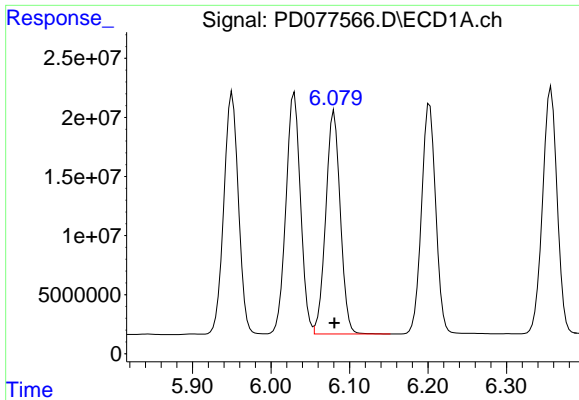
#8 Heptachlor epoxide

R.T.: 5.693 min
 Delta R.T.: 0.000 min
 Response: 261894336
 Conc: 74.34 ng/ml



#8 Heptachlor epoxide

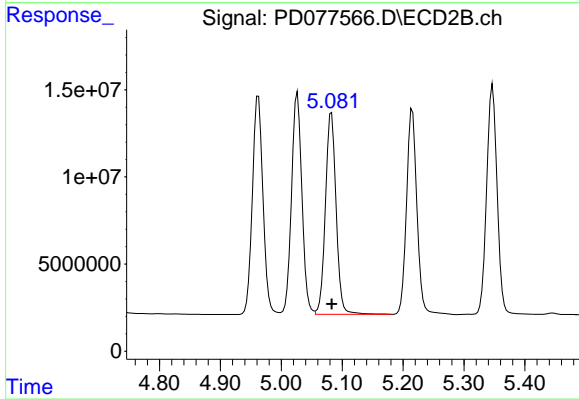
R.T.: 4.712 min
 Delta R.T.: 0.000 min
 Response: 152661261
 Conc: 74.65 ng/ml



#9 Endosulfan I

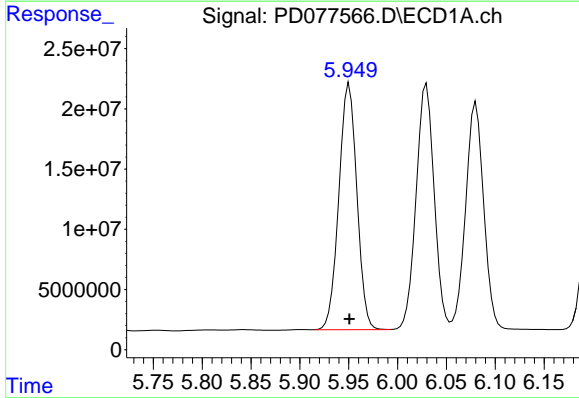
R.T.: 6.080 min
 Delta R.T.: 0.000 min
 Response: 243051457
 Conc: 74.46 ng/ml

Instrument :
 ECD_D
 ClientSampleId :
 PSTDICC075



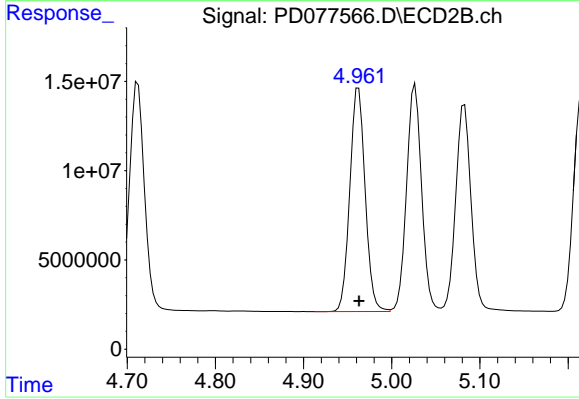
#9 Endosulfan I

R.T.: 5.082 min
 Delta R.T.: 0.000 min
 Response: 141273781
 Conc: 75.35 ng/ml



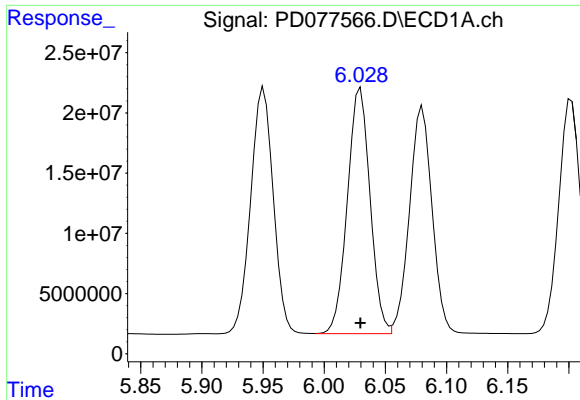
#10 gamma-Chlordane

R.T.: 5.951 min
 Delta R.T.: 0.000 min
 Response: 263021810
 Conc: 74.93 ng/ml



#10 gamma-Chlordane

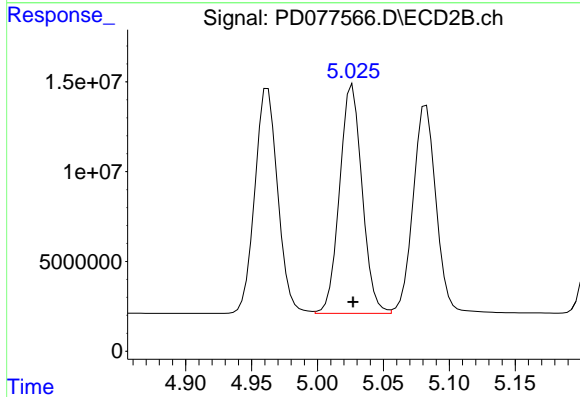
R.T.: 4.962 min
 Delta R.T.: 0.000 min
 Response: 151678731
 Conc: 75.02 ng/ml



#11 alpha-Chlordane

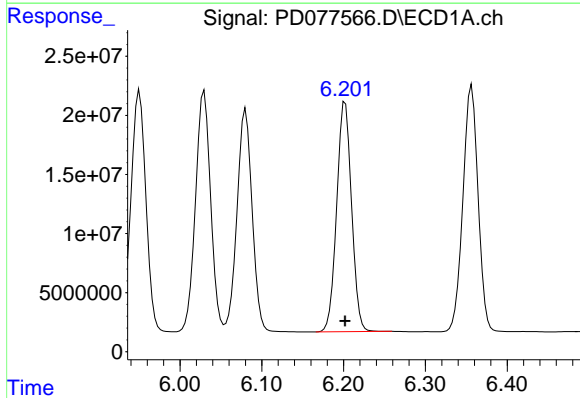
R.T.: 6.030 min
 Delta R.T.: 0.000 min
 Response: 263128699
 Conc: 74.60 ng/ml

Instrument :
 ECD_D
 ClientSampleId :
 PSTDICC075



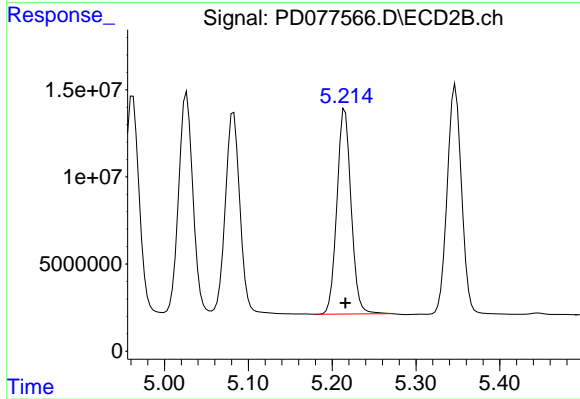
#11 alpha-Chlordane

R.T.: 5.027 min
 Delta R.T.: 0.000 min
 Response: 151096641
 Conc: 74.69 ng/ml



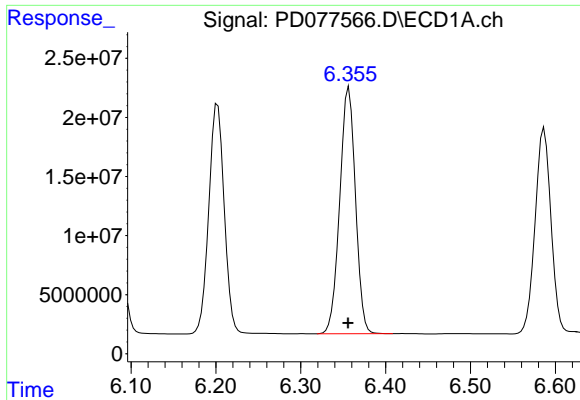
#12 4,4'-DDE

R.T.: 6.202 min
 Delta R.T.: 0.000 min
 Response: 245336586
 Conc: 75.80 ng/ml



#12 4,4'-DDE

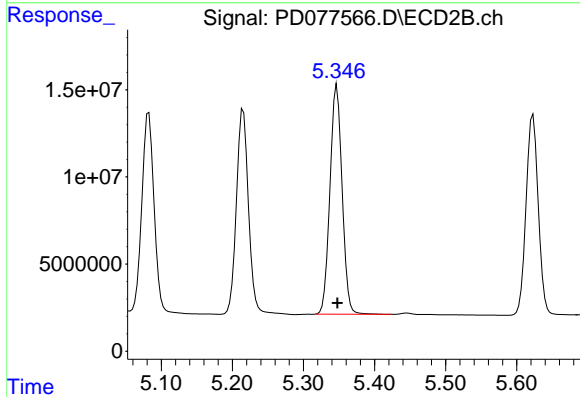
R.T.: 5.215 min
 Delta R.T.: 0.000 min
 Response: 138252030
 Conc: 74.90 ng/ml



#13 Dieldrin

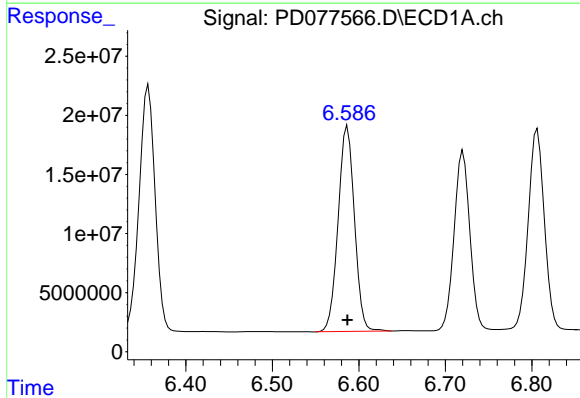
R.T.: 6.357 min
 Delta R.T.: 0.001 min
 Response: 268126675
 Conc: 75.40 ng/ml

Instrument :
 ECD_D
 ClientSampleId :
 PSTDICC075



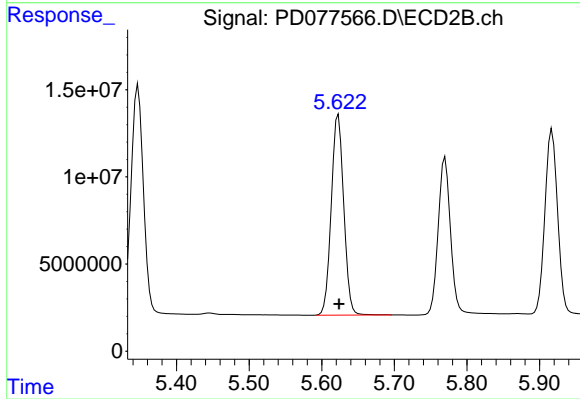
#13 Dieldrin

R.T.: 5.347 min
 Delta R.T.: 0.000 min
 Response: 156252836
 Conc: 75.07 ng/ml



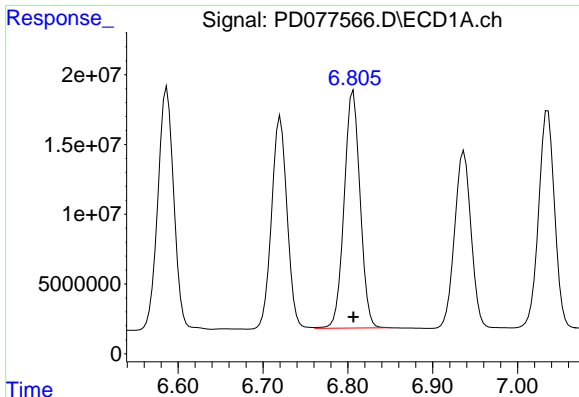
#14 Endrin

R.T.: 6.587 min
 Delta R.T.: 0.000 min
 Response: 226760227
 Conc: 74.85 ng/ml



#14 Endrin

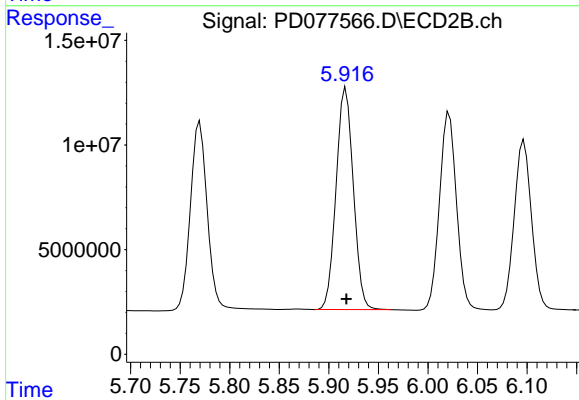
R.T.: 5.623 min
 Delta R.T.: 0.000 min
 Response: 137557509
 Conc: 74.82 ng/ml



#15 Endosulfan II

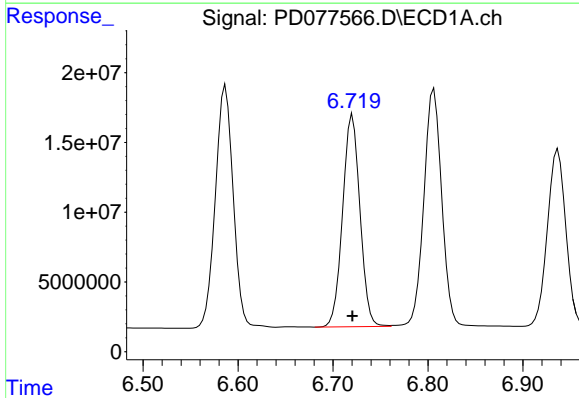
R.T.: 6.806 min
 Delta R.T.: 0.000 min
 Response: 221577218
 Conc: 73.92 ng/ml

Instrument :
 ECD_D
 ClientSampleId :
 PSTDICC075



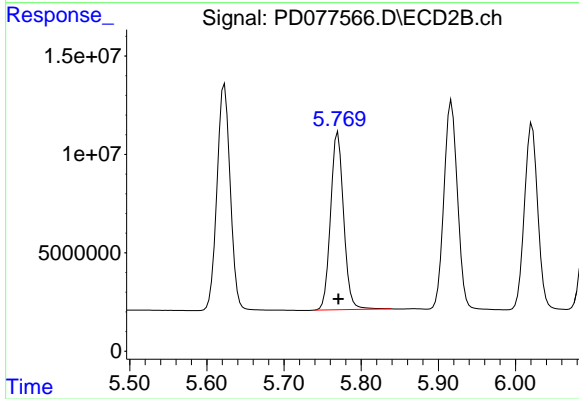
#15 Endosulfan II

R.T.: 5.917 min
 Delta R.T.: 0.000 min
 Response: 128171678
 Conc: 74.45 ng/ml



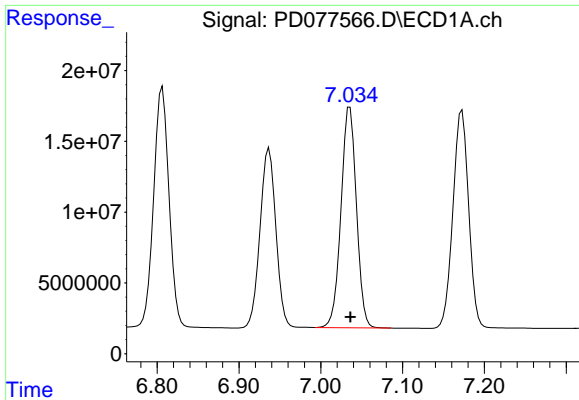
#16 4,4'-DDD

R.T.: 6.721 min
 Delta R.T.: 0.000 min
 Response: 193062795
 Conc: 75.48 ng/ml



#16 4,4'-DDD

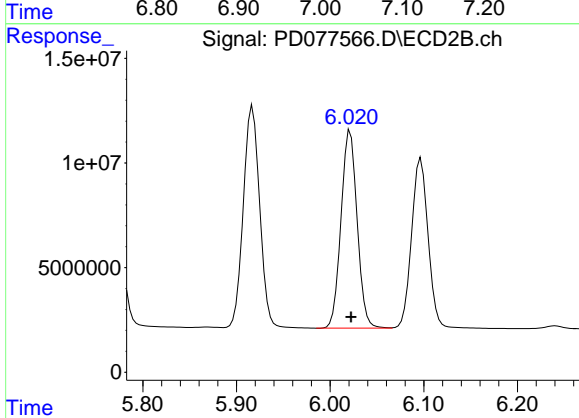
R.T.: 5.770 min
 Delta R.T.: 0.000 min
 Response: 106535361
 Conc: 74.87 ng/ml



#17 4,4'-DDT

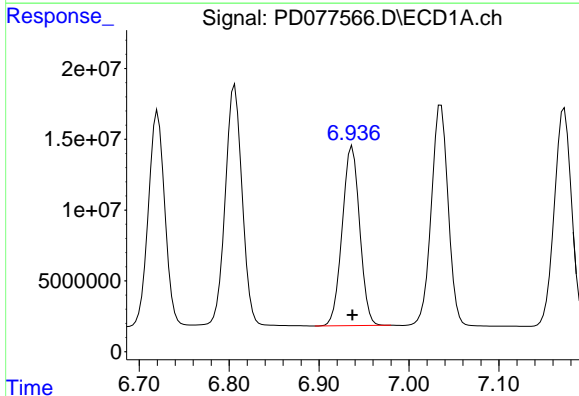
R.T.: 7.036 min
 Delta R.T.: 0.000 min
 Response: 203317798
 Conc: 76.16 ng/ml

Instrument :
 ECD_D
 ClientSampleId :
 PSTDICC075



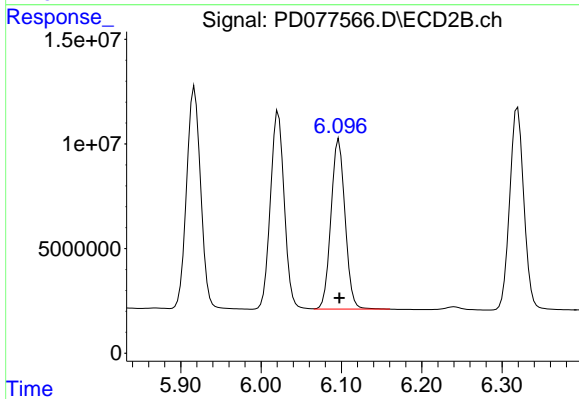
#17 4,4'-DDT

R.T.: 6.021 min
 Delta R.T.: 0.000 min
 Response: 113258060
 Conc: 76.41 ng/ml



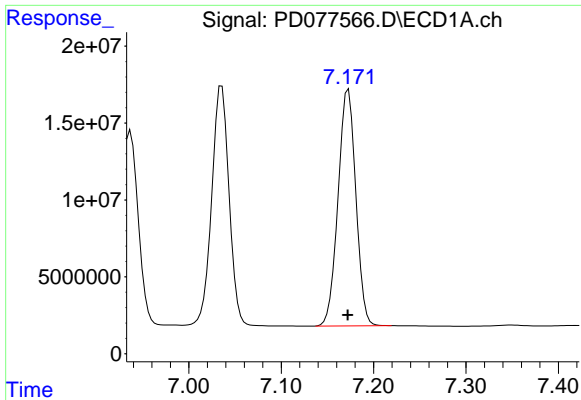
#18 Endrin aldehyde

R.T.: 6.937 min
 Delta R.T.: 0.000 min
 Response: 170929492
 Conc: 73.87 ng/ml



#18 Endrin aldehyde

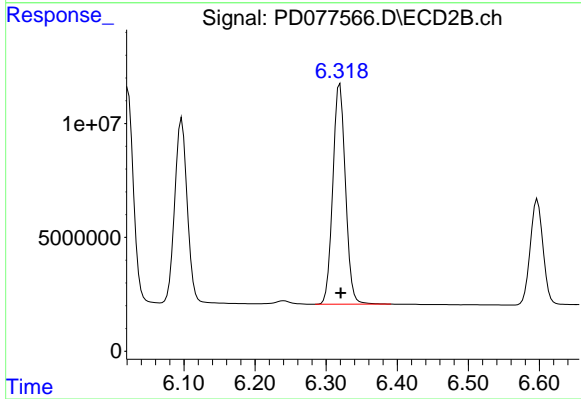
R.T.: 6.097 min
 Delta R.T.: 0.000 min
 Response: 99113947
 Conc: 73.78 ng/ml



#19 Endosulfan Sulfate

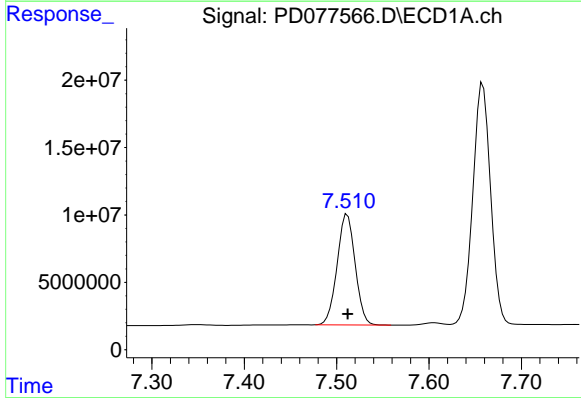
R.T.: 7.173 min
 Delta R.T.: 0.000 min
 Response: 205960632
 Conc: 74.17 ng/ml

Instrument :
 ECD_D
 ClientSampleId :
 PSTDICC075



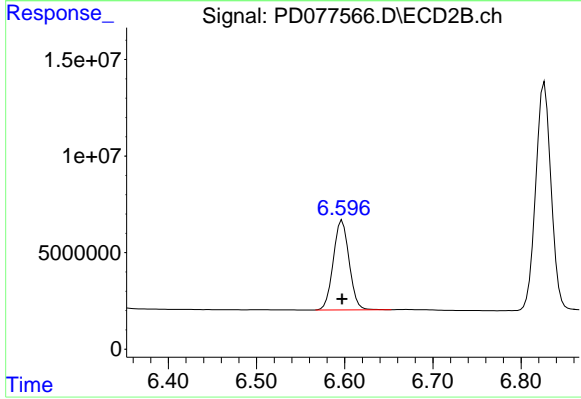
#19 Endosulfan Sulfate

R.T.: 6.319 min
 Delta R.T.: -0.001 min
 Response: 119371705
 Conc: 74.09 ng/ml



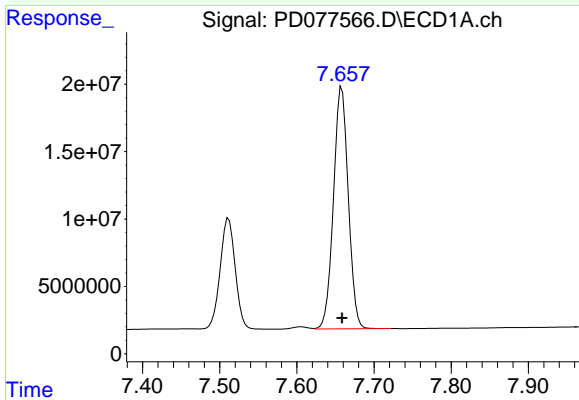
#20 Methoxychlor

R.T.: 7.512 min
 Delta R.T.: 0.000 min
 Response: 111491944
 Conc: 73.28 ng/ml



#20 Methoxychlor

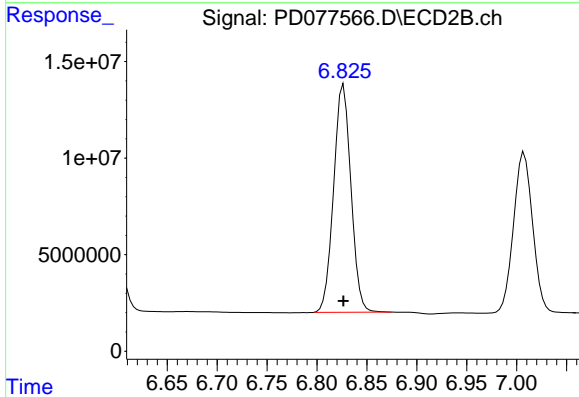
R.T.: 6.597 min
 Delta R.T.: 0.000 min
 Response: 57963319
 Conc: 73.31 ng/ml



#21 Endrin ketone

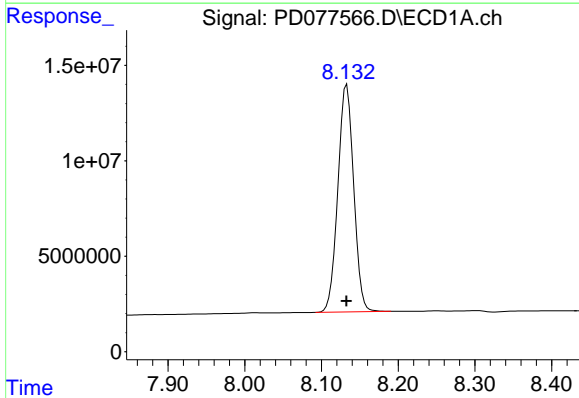
R.T.: 7.658 min
 Delta R.T.: 0.000 min
 Response: 239823435
 Conc: 74.46 ng/ml

Instrument :
 ECD_D
 ClientSampleId :
 PSTDICC075



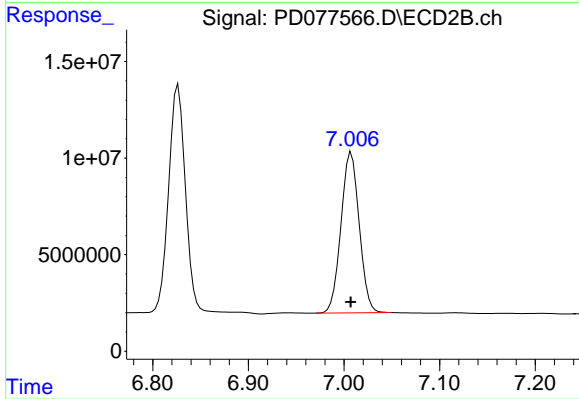
#21 Endrin ketone

R.T.: 6.827 min
 Delta R.T.: 0.000 min
 Response: 142419059
 Conc: 74.19 ng/ml



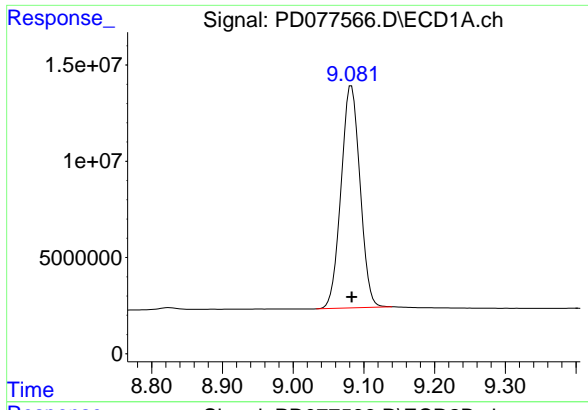
#22 Mirex

R.T.: 8.133 min
 Delta R.T.: 0.000 min
 Response: 171055176
 Conc: 73.20 ng/ml



#22 Mirex

R.T.: 7.008 min
 Delta R.T.: 0.000 min
 Response: 110647688
 Conc: 72.95 ng/ml



#28 Decachlorobiphenyl

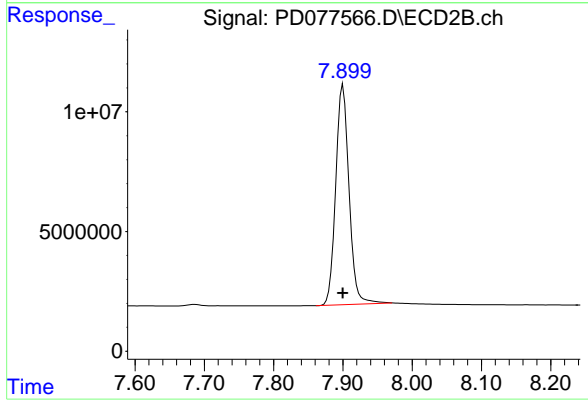
R.T.: 9.082 min

Delta R.T.: 0.000 min

Response: 215219964

Conc: 72.92 ng/ml

Instrument :
ECD_D
ClientSampleId :
PSTDICC075



#28 Decachlorobiphenyl

R.T.: 7.900 min

Delta R.T.: 0.000 min

Response: 122761035

Conc: 72.77 ng/ml