

Data Path : Z:\pestpcbsrv\HPCHEM1\ECD_D\Data\PD100918\
 Data File : PD049729.D
 Signal(s) : Signal #1: ECD1A.CH Signal #2: ECD2B.CH
 Acq On : 09 Oct 2018 12:26
 Operator : AJ\SJ
 Sample : PIBLK06
 Misc :
 ALS Vial : 2 Sample Multiplier: 1

Instrument :
 ECD_D
 ClientSampleId :
 PIBLK06

Integration File signal 1: autoint1.e
 Integration File signal 2: autoint2.e
 Quant Time: Oct 09 13:11:38 2018
 Quant Method : Z:\pestpcbsrv\HPCHEM1\ECD_D\Method\PD100918CLP.M
 Quant Title : GC Extractables
 QLast Update : Tue Oct 09 09:02:50 2018
 Response via : Initial Calibration
 Integrator: ChemStation 6890 Scale Mode: Large solvent peaks clipped

Volume Inj. : 1 µl
 Signal #1 Phase : ZB-MR2 Signal #2 Phase: ZB-MR1
 Signal #1 Info : 30M x 0.32mm x0.2 Signal #2 Info : 30M x 0.32mm x 0.50µm

Compound	RT#1	RT#2	Resp#1	Resp#2	ng/ml	ng/ml

System Monitoring Compounds						
1) SA Tetrachlo...	3.290	4.036	27576752	406.1E6	19.917	22.855
27) SA Decachlor...	7.886	9.132	52423384	690.1E6	37.469	42.934

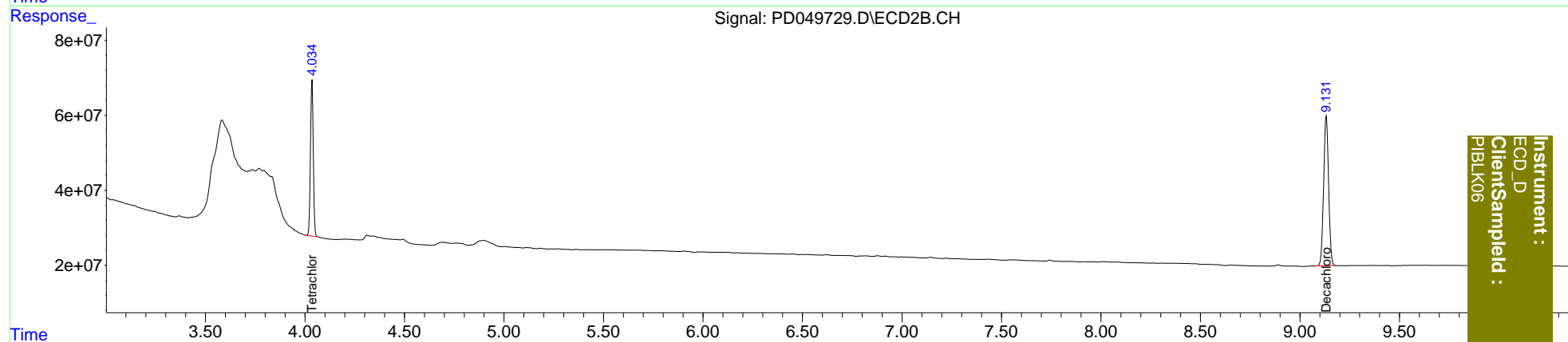
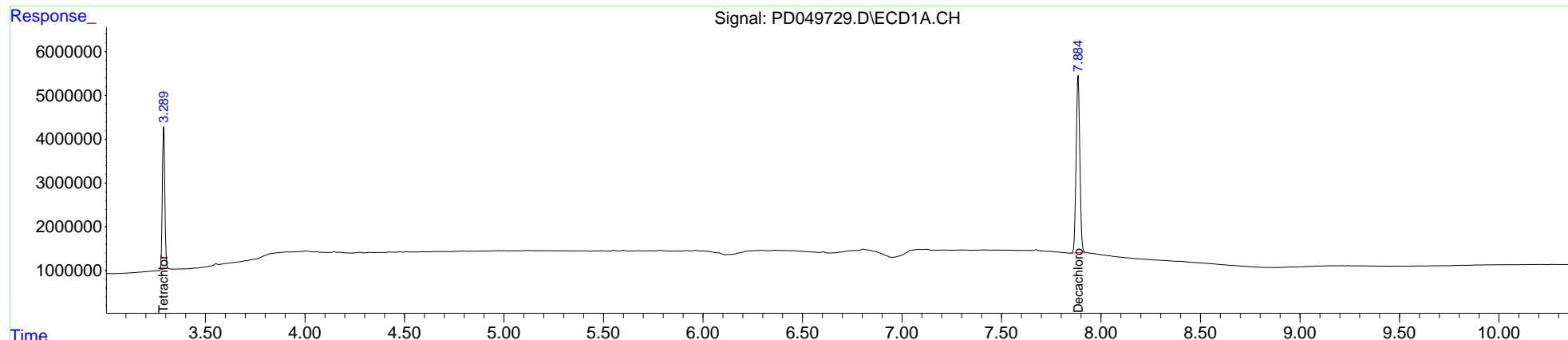
Target Compounds

(f)=RT Delta > 1/2 Window (#)=Amounts differ by > 25% (m)=manual int.

Data Path : Z:\pestpcbsrv\HPCHEM1\ECD_D\Data\PD100918\
 Data File : PD049729.D
 Signal(s) : Signal #1: ECD1A.CH Signal #2: ECD2B.CH
 Acq On : 09 Oct 2018 12:26
 Operator : AJ\SJ
 Sample : PIBLK06
 Misc :
 ALS Vial : 2 Sample Multiplier: 1

Integration File signal 1: autoint1.e
 Integration File signal 2: autoint2.e
 Quant Time: Oct 09 13:11:38 2018
 Quant Method : Z:\pestpcbsrv\HPCHEM1\ECD_D\Method\PD100918CLP.M
 Quant Title : GC Extractables
 QLast Update : Tue Oct 09 09:02:50 2018
 Response via : Initial Calibration
 Integrator: ChemStation 6890 Scale Mode: Large solvent peaks clipped

Volume Inj. : 1 µl
 Signal #1 Phase : ZB-MR2 Signal #2 Phase: ZB-MR1
 Signal #1 Info : 30M x 0.32mm x0.2 Signal #2 Info : 30M x 0.32mm x 0.50µm



Instrument :
 ECD_D
 ClientSampleId :
 PIBLK06