

Data Path : Z:\pestpcbsrv\HPCHEM1\ECD_D\Data\PD100918\
 Data File : PD049761.D
 Signal(s) : Signal #1: ECD1A.CH Signal #2: ECD2B.CH
 Acq On : 09 Oct 2018 21:38
 Operator : AJ\SJ
 Sample : MDL-TOX-W-06
 Misc :
 ALS Vial : 41 Sample Multiplier: 1

Instrument :
 ECD_D
ClientSampled :
 MDL-TOX-W-06

Manual Integrations
APPROVED
 Sohil
 10/11/2018 2:41:42 PM

Integration File signal 1: autoint1.e
 Integration File signal 2: autoint2.e
 Quant Time: Oct 10 09:20:22 2018
 Quant Method : Z:\pestpcbsrv\HPCHEM1\ECD_D\Method\PD100918CLP.M
 Quant Title : GC Extractables
 QLast Update : Tue Oct 09 09:02:50 2018
 Response via : Initial Calibration
 Integrator: ChemStation 6890 Scale Mode: Large solvent peaks clipped

Volume Inj. : 1 µl
 Signal #1 Phase : ZB-MR2 Signal #2 Phase: ZB-MR1
 Signal #1 Info : 30M x 0.32mm x0.2 Signal #2 Info : 30M x 0.32mm x 0.50µm

Compound	RT#1	RT#2	Resp#1	Resp#2	ng/ml	ng/ml

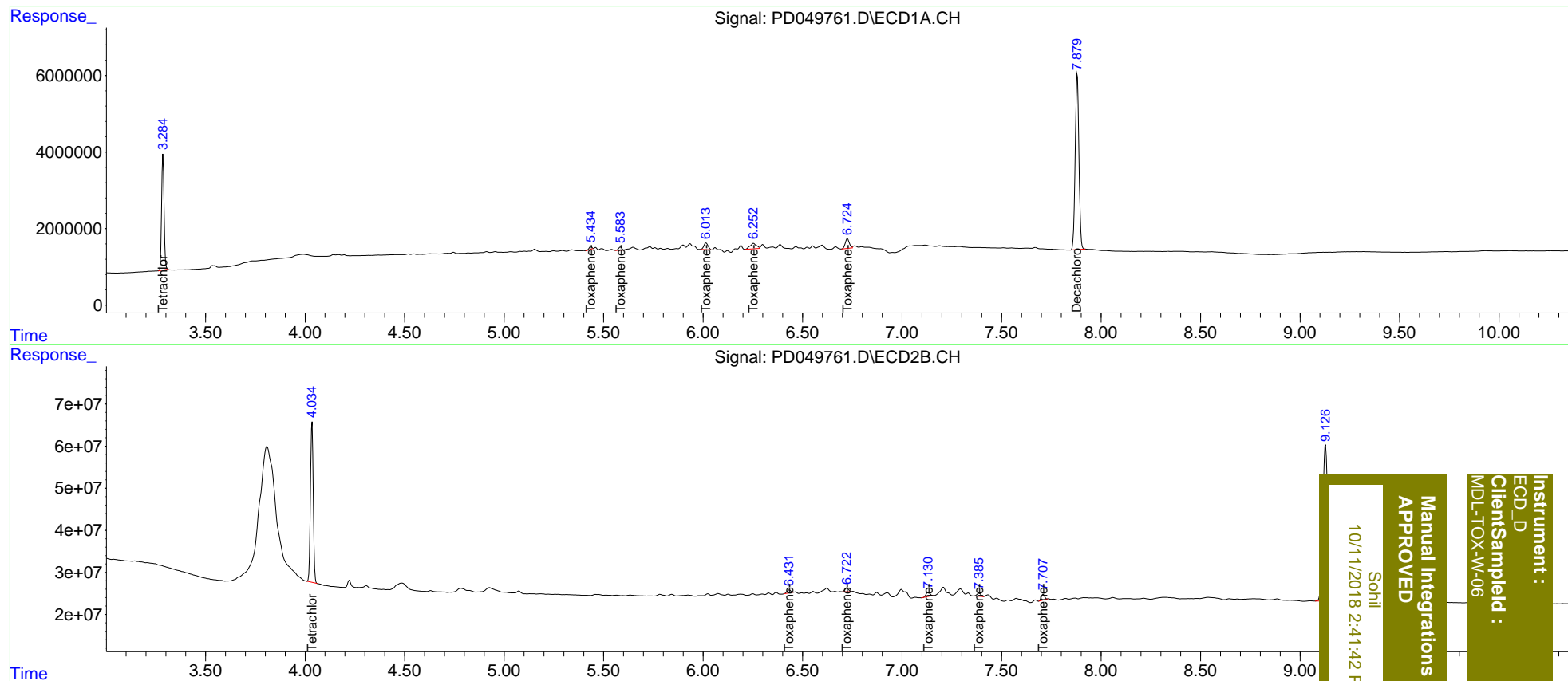
System Monitoring Compounds						
1) SA Tetrachlo...	3.286	4.035	26031421	374.7E6	18.801	21.089
27) SA Decachlor...	7.880	9.128	59937699	654.4E6	42.840	40.713
Target Compounds						
22) Toxaphene-1	5.434	6.431	725589	9244120	93.928m	102.773m
23) Toxaphene-2	5.585	6.722	930948	11791915	94.910	110.520m
24) Toxaphene-3	6.013	7.130	2564312	14064318	95.066m	98.056m
25) Toxaphene-4	6.253	7.385	3184990	9888253	113.342	95.511m
26) Toxaphene-5	6.725	7.709	3625493	17104149	110.930	95.199

(f)=RT Delta > 1/2 Window (#)=Amounts differ by > 25% (m)=manual int.

Data Path : Z:\pestpcbsrv\HPCHEM1\ECD_D\Data\PD100918\
 Data File : PD049761.D
 Signal(s) : Signal #1: ECD1A.CH Signal #2: ECD2B.CH
 Acq On : 09 Oct 2018 21:38
 Operator : AJ\SJ
 Sample : MDL-TOX-W-06
 Misc :
 ALS Vial : 41 Sample Multiplier: 1

Integration File signal 1: autoint1.e
 Integration File signal 2: autoint2.e
 Quant Time: Oct 10 09:20:22 2018
 Quant Method : Z:\pestpcbsrv\HPCHEM1\ECD_D\Method\PD100918CLP.M
 Quant Title : GC Extractables
 QLast Update : Tue Oct 09 09:02:50 2018
 Response via : Initial Calibration
 Integrator: ChemStation 6890 Scale Mode: Large solvent peaks clipped

Volume Inj. : 1 µl
 Signal #1 Phase : ZB-MR2 Signal #2 Phase: ZB-MR1
 Signal #1 Info : 30M x 0.32mm x0.2 Signal #2 Info : 30M x 0.32mm x 0.50µm



Instrument : ECD_D
 Client Sample Id : MDL-TOX-W-06
 Manual Integrations APPROVED
 Sohli
 10/11/2018 2:41:42 PM