

Data Path : Z:\pestpcbsrv\HPCHEM1\ECD_D\Data\PD101922\
 Data File : PD072512.D
 Signal(s) : Signal #1: ECD1A.ch Signal #2: ECD2B.ch
 Acq On : 19 Oct 2022 14:20
 Operator : AR\AJ
 Sample : PB148370BS
 Misc :
 ALS Vial : 9 Sample Multiplier: 1

Instrument :
 ECD_D
 ClientSampleId :

Integration File signal 1: autoint1.e
 Integration File signal 2: autoint2.e
 Quant Time: Oct 24 04:44:38 2022
 Quant Method : Z:\pestpcbsrv\HPCHEM1\ECD_D\Method\PD101722CLP.M
 Quant Title : GC Extractables
 QLast Update : Thu Oct 20 01:04:30 2022
 Response via : Initial Calibration
 Integrator: ChemStation

Volume Inj. : 1 µl
 Signal #1 Phase : ZB-MR2 Signal #2 Phase: ZB-MR1
 Signal #1 Info : 30M x 0.32mm x0.2 Signal #2 Info : 30M x 0.32mm x 0.50µm

	Compound	RT#1	RT#2	Resp#1	Resp#2	ng/ml	ng/ml

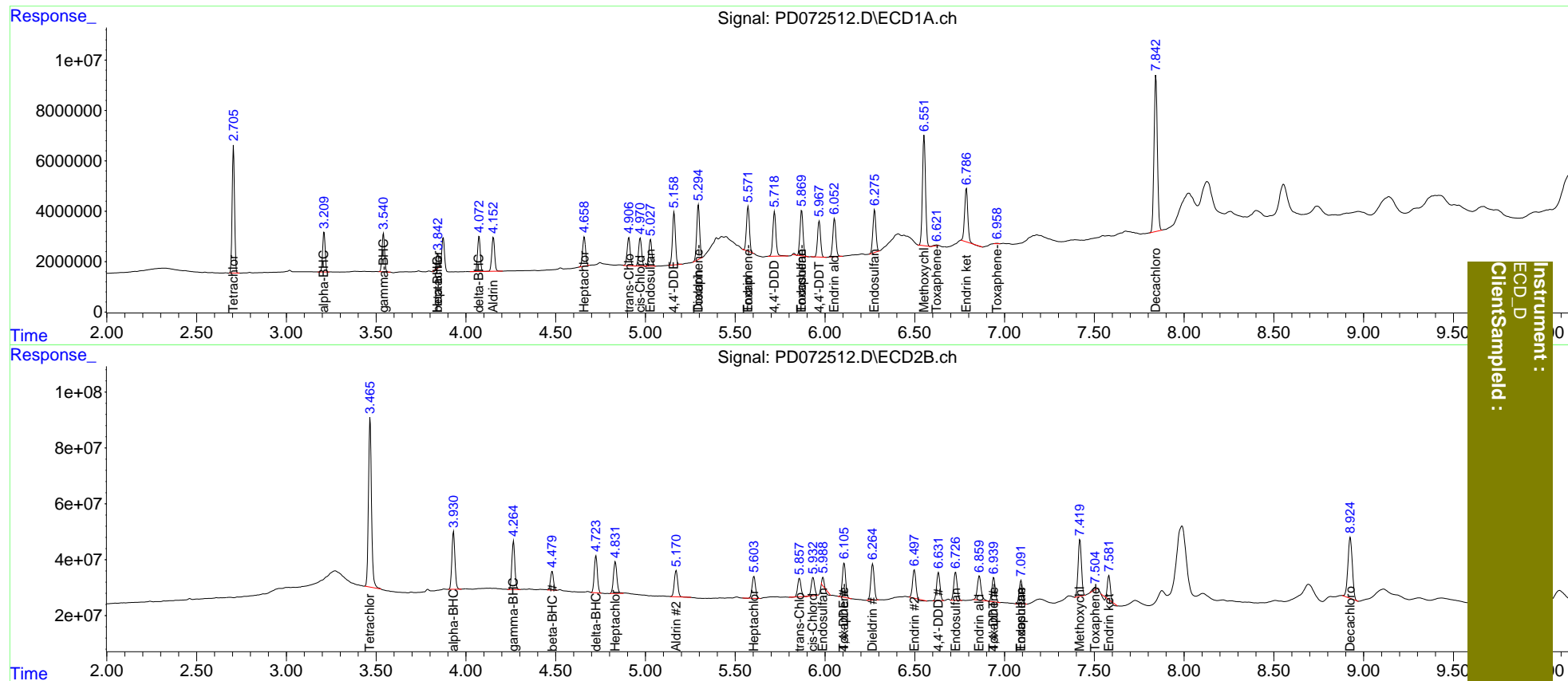
System Monitoring Compounds							
1)	SA Tetrachlo...	2.706	3.467	46800497	713.7E6	18.355	19.002
2)	SA Decachlor...	7.843	8.926	79829813	370.9E6	39.882	41.196
Target Compounds							
2)	A alpha-BHC	3.210	3.931	15714156	243.9E6	4.198	4.956
3)	MA gamma-BHC...	3.541	4.265	15064133	201.2E6	4.576	4.826
4)	MA Heptachlor	3.844f	4.832	4565502	152.2E6	1.321	5.285 #
5)	MB Aldrin	4.153	5.171	15007179	125.7E6	4.430	5.225
6)	B beta-BHC	3.844	4.481	4565502	78504092	2.856	4.716 #
7)	B delta-BHC	4.074	4.725	14595849	160.7E6	4.115	5.044
8)	Heptachlo...	4.660	5.605	13413647	103.2E6	4.422	5.305
9)	A Endosulfan I	5.029	5.989	11898009	12719078	4.426	0.792 #
10)	B trans-Chl...	4.908	5.858	13193753	85548077	4.244	4.572
11)	B cis-Chlor...	4.971	5.934	12753414	84276049	4.223	4.711
12)	B 4,4'-DDE	5.160	6.107	23880894	154.1E6	8.198	9.421
13)	MA Dieldrin	5.295	6.266	24498458	167.0E6	8.365	10.233
14)	MA Endrin	5.572	6.498	19923319	121.8E6	7.782	8.858
15)	B Endosulfa...	5.870	6.728	21580040	130.8E6	8.959	10.254
16)	A 4,4'-DDD	5.719	6.632	21538153	131.3E6	9.481	10.588
17)	MA 4,4'-DDT	5.968	6.940	16677531	112.5E6	7.545	9.351
18)	B Endrin al...	6.053	6.860	18216032	127.8E6	8.840	11.881 #
19)	B Endosulfa...	6.276	7.092	19940748	109.3E6	8.262	9.151
20)	A Methoxychlor	6.552	7.420	51762043	263.0E6	43.370	47.919
21)	B Endrin ke...	6.788	7.582	25946354	85083706	9.104	6.636 #
22)	Toxaphene-1	5.295	0.000	24498458	0	1808.208	N.D. #
23)	Toxaphene-2	5.572f	6.107f	19923319	154.1E6	1456.788	1355.677
24)	Toxaphene-3	5.870	6.940f	21580040	112.5E6	1186.117	400.369 #
25)	Toxaphene-4	6.623f	7.092	631803	109.3E6	8.383	471.116 #
26)	Toxaphene-5	6.959	7.507	203671	15427811	4.960	102.921 #

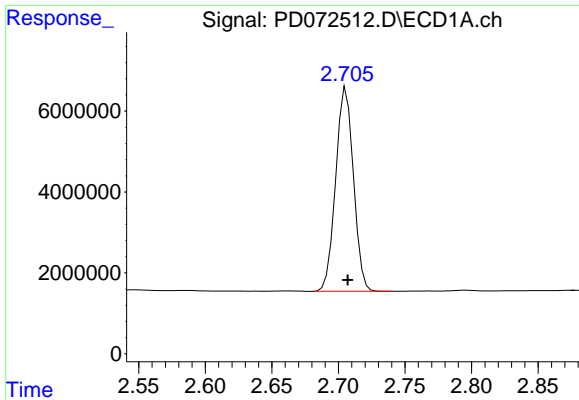
(f)=RT Delta > 1/2 Window (#)=Amounts differ by > 25% (m)=manual int.

Data Path : Z:\pestpcbsrv\HPCHEM1\ECD_D\Data\PD101922\
 Data File : PD072512.D
 Signal(s) : Signal #1: ECD1A.ch Signal #2: ECD2B.ch
 Acq On : 19 Oct 2022 14:20
 Operator : AR\AJ
 Sample : PB148370BS
 Misc :
 ALS Vial : 9 Sample Multiplier: 1

Integration File signal 1: autoint1.e
 Integration File signal 2: autoint2.e
 Quant Time: Oct 24 04:44:38 2022
 Quant Method : Z:\pestpcbsrv\HPCHEM1\ECD_D\Method\PD101722CLP.M
 Quant Title : GC Extractables
 QLast Update : Thu Oct 20 01:04:30 2022
 Response via : Initial Calibration
 Integrator: ChemStation

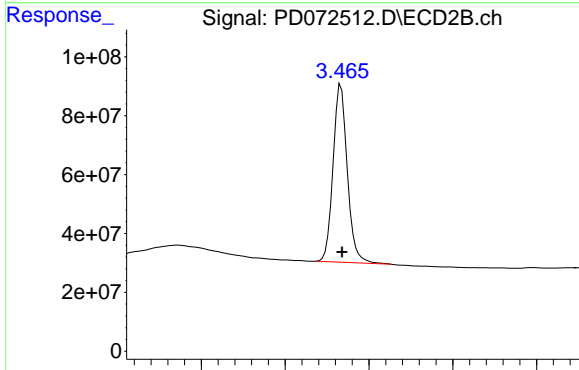
Volume Inj. : 1 µl
 Signal #1 Phase : ZB-MR2 Signal #2 Phase: ZB-MR1
 Signal #1 Info : 30M x 0.32mm x0.2 Signal #2 Info : 30M x 0.32mm x 0.50µm



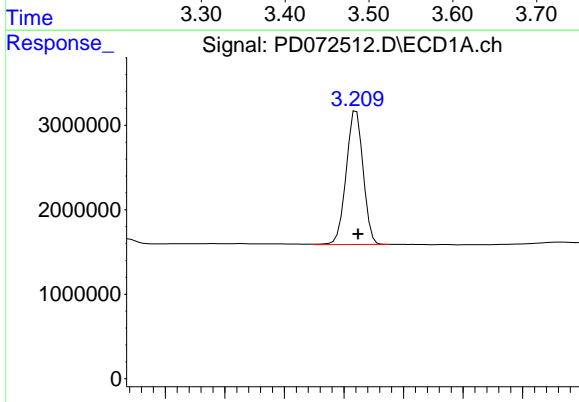


#1 Tetrachloro-m-xylene
 R.T.: 2.706 min
 Delta R.T.: -0.001 min
 Response: 46800497
 Conc: 18.35 ng/ml

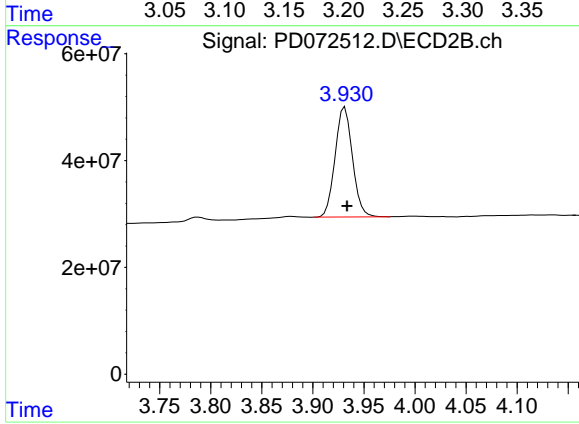
Instrument :
 ECD_D
 ClientSampleId :



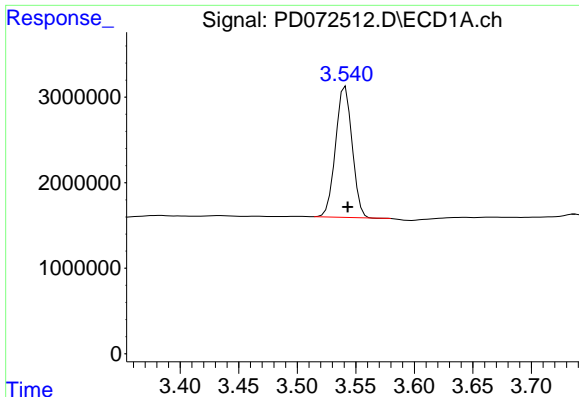
#1 Tetrachloro-m-xylene
 R.T.: 3.467 min
 Delta R.T.: -0.001 min
 Response: 713694501
 Conc: 19.00 ng/ml



#2 alpha-BHC
 R.T.: 3.210 min
 Delta R.T.: -0.001 min
 Response: 15714156
 Conc: 4.20 ng/ml



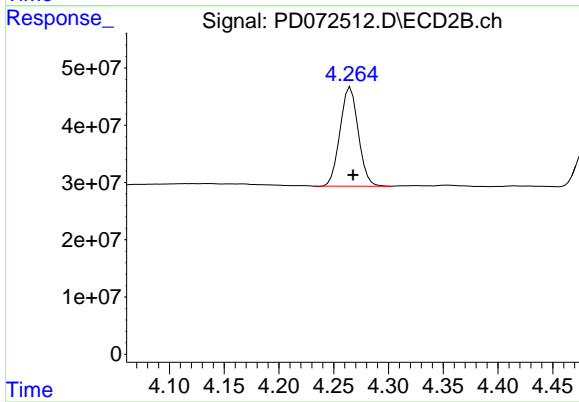
#2 alpha-BHC
 R.T.: 3.931 min
 Delta R.T.: -0.002 min
 Response: 243913550
 Conc: 4.96 ng/ml



#3 gamma-BHC (Lindane)

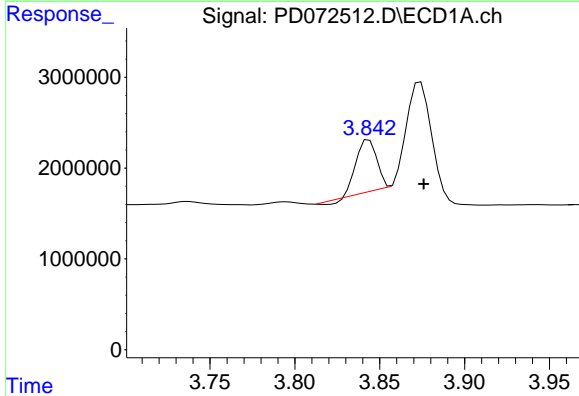
R.T.: 3.541 min
 Delta R.T.: -0.002 min
 Response: 15064133
 Conc: 4.58 ng/ml

Instrument :
 ECD_D
 ClientSampleId :



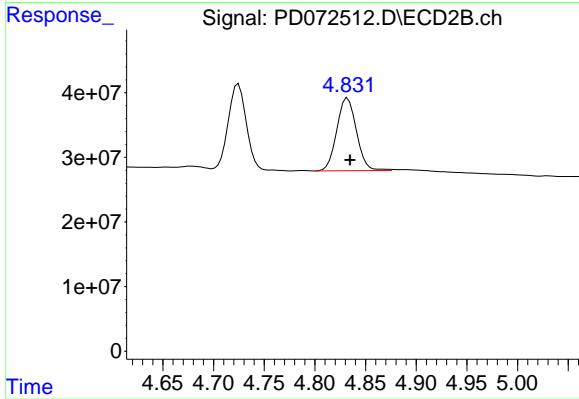
#3 gamma-BHC (Lindane)

R.T.: 4.265 min
 Delta R.T.: -0.002 min
 Response: 201151589
 Conc: 4.83 ng/ml



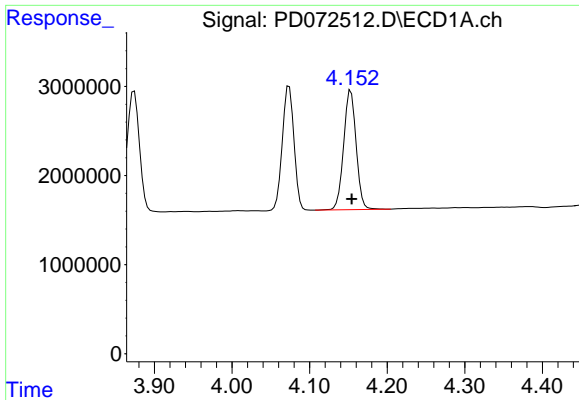
#4 Heptachlor

R.T.: 3.844 min
 Delta R.T.: -0.032 min
 Response: 4565502
 Conc: 1.32 ng/ml



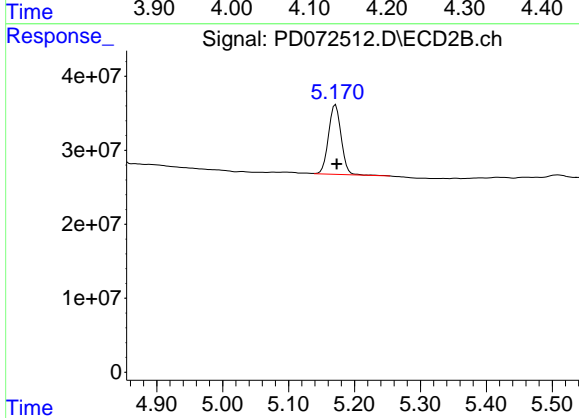
#4 Heptachlor

R.T.: 4.832 min
 Delta R.T.: -0.002 min
 Response: 152167073
 Conc: 5.29 ng/ml

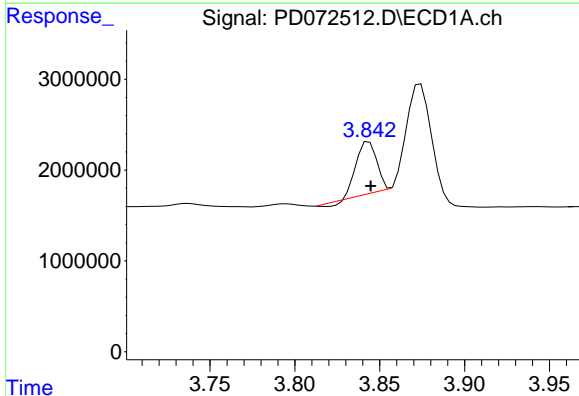


#5 Aldrin
 R.T.: 4.153 min
 Delta R.T.: -0.001 min
 Response: 15007179
 Conc: 4.43 ng/ml

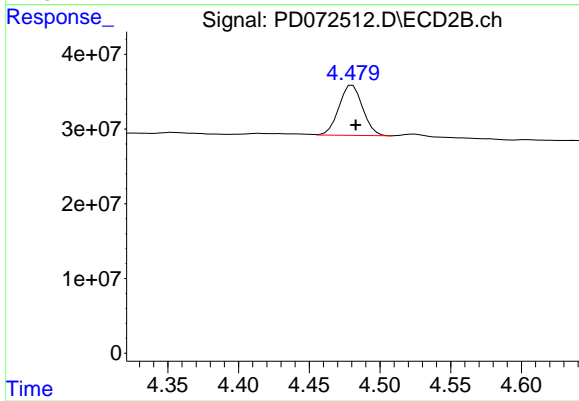
Instrument :
 ECD_D
 ClientSampleId :



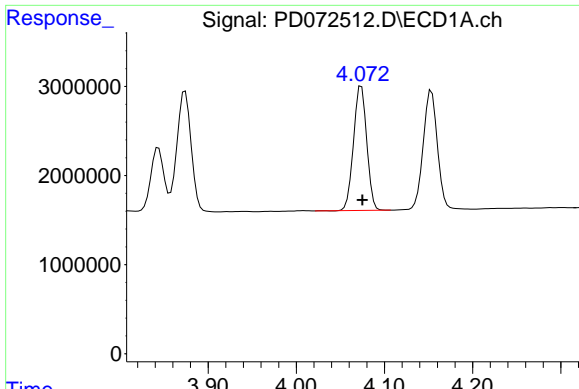
#5 Aldrin
 R.T.: 5.171 min
 Delta R.T.: -0.002 min
 Response: 125714381
 Conc: 5.23 ng/ml



#6 beta-BHC
 R.T.: 3.844 min
 Delta R.T.: -0.001 min
 Response: 4565502
 Conc: 2.86 ng/ml



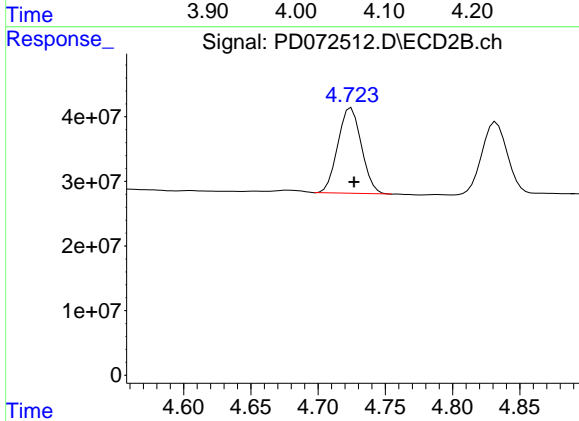
#6 beta-BHC
 R.T.: 4.481 min
 Delta R.T.: -0.002 min
 Response: 78504092
 Conc: 4.72 ng/ml



#7 delta-BHC

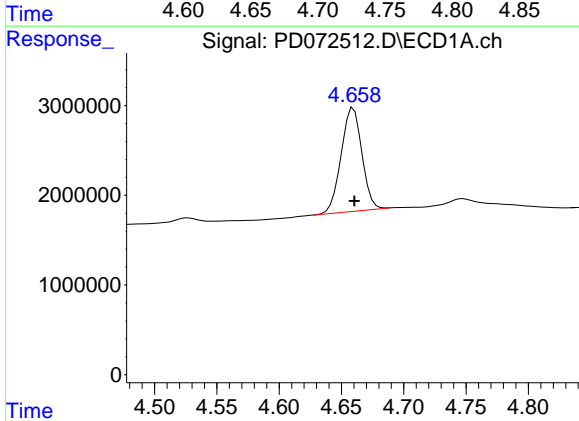
R.T.: 4.074 min
 Delta R.T.: -0.001 min
 Response: 14595849
 Conc: 4.12 ng/ml

Instrument :
 ECD_D
 ClientSampleId :



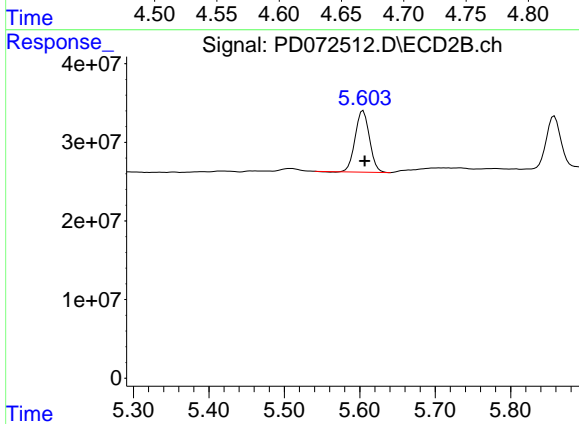
#7 delta-BHC

R.T.: 4.725 min
 Delta R.T.: -0.002 min
 Response: 160692358
 Conc: 5.04 ng/ml



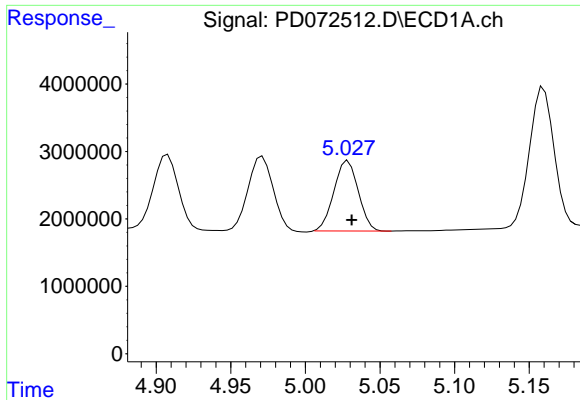
#8 Heptachlor epoxide

R.T.: 4.660 min
 Delta R.T.: 0.000 min
 Response: 13413647
 Conc: 4.42 ng/ml



#8 Heptachlor epoxide

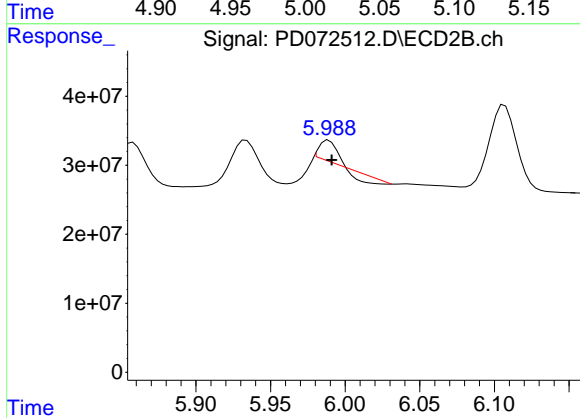
R.T.: 5.605 min
 Delta R.T.: -0.002 min
 Response: 103223067
 Conc: 5.31 ng/ml



#9 Endosulfan I

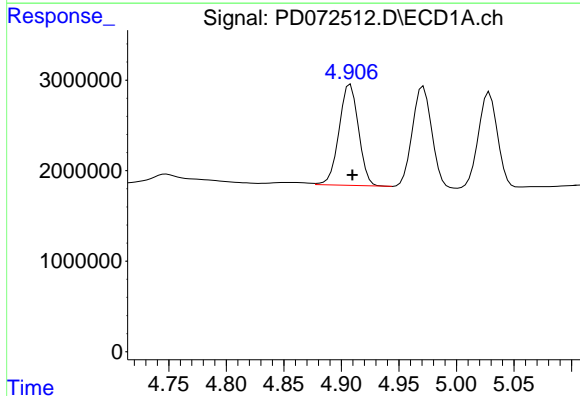
R.T.: 5.029 min
 Delta R.T.: -0.003 min
 Response: 11898009
 Conc: 4.43 ng/ml

Instrument :
 ECD_D
 ClientSampleId :



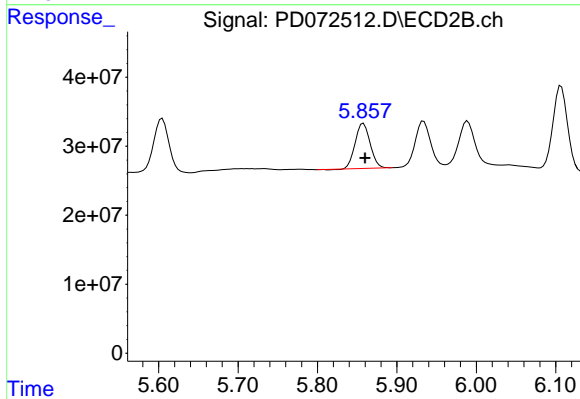
#9 Endosulfan I

R.T.: 5.989 min
 Delta R.T.: -0.002 min
 Response: 12719078
 Conc: 0.79 ng/ml



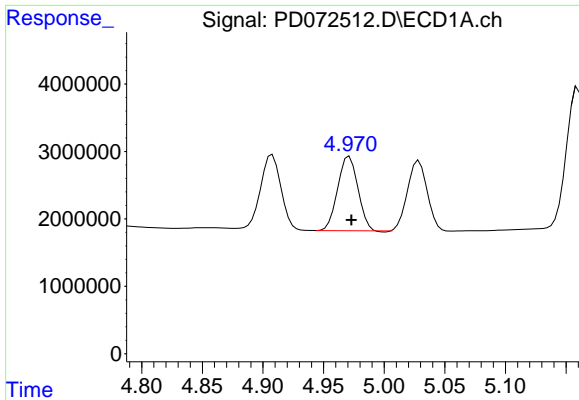
#10 trans-Chlordane

R.T.: 4.908 min
 Delta R.T.: -0.002 min
 Response: 13193753
 Conc: 4.24 ng/ml



#10 trans-Chlordane

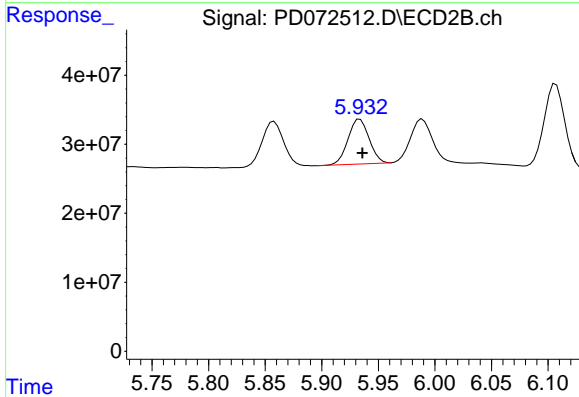
R.T.: 5.858 min
 Delta R.T.: -0.002 min
 Response: 85548077
 Conc: 4.57 ng/ml



#11 cis-Chlordane

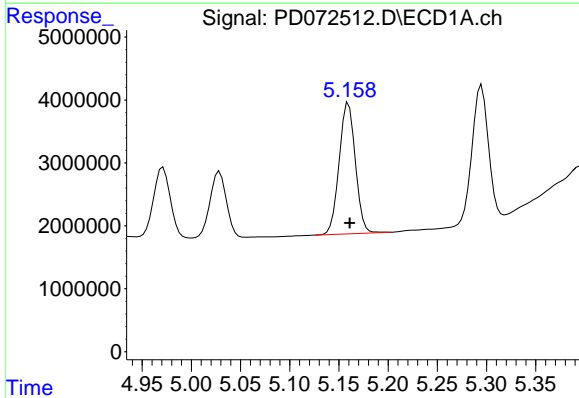
R.T.: 4.971 min
 Delta R.T.: -0.002 min
 Response: 12753414
 Conc: 4.22 ng/ml

Instrument :
 ECD_D
 ClientSampleId :



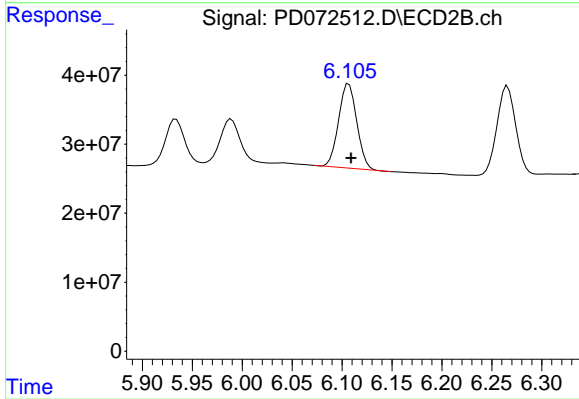
#11 cis-Chlordane

R.T.: 5.934 min
 Delta R.T.: -0.002 min
 Response: 84276049
 Conc: 4.71 ng/ml



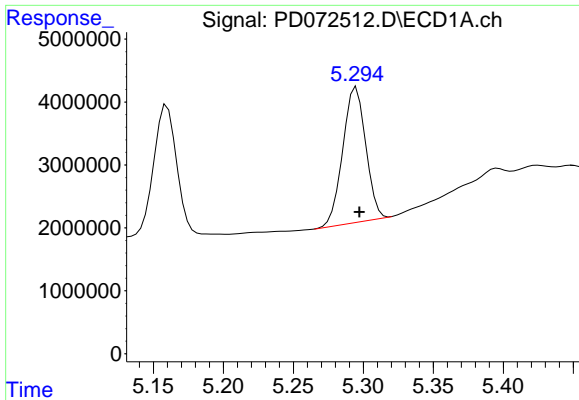
#12 4,4'-DDE

R.T.: 5.160 min
 Delta R.T.: -0.001 min
 Response: 23880894
 Conc: 8.20 ng/ml



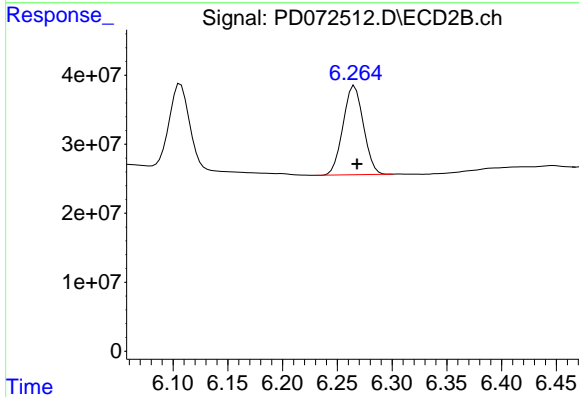
#12 4,4'-DDE

R.T.: 6.107 min
 Delta R.T.: -0.002 min
 Response: 154103033
 Conc: 9.42 ng/ml

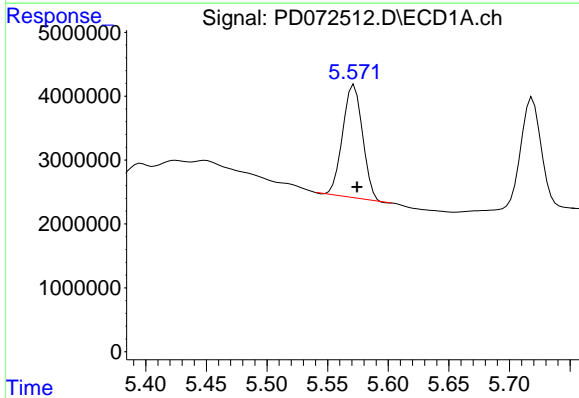


#13 Dieldrin
 R.T.: 5.295 min
 Delta R.T.: -0.002 min
 Response: 24498458
 Conc: 8.36 ng/ml

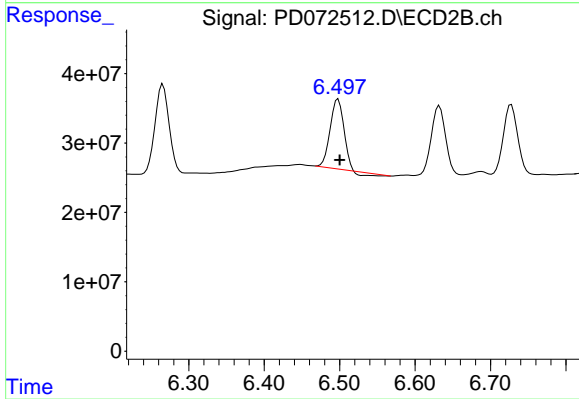
Instrument :
 ECD_D
 ClientSampleId :



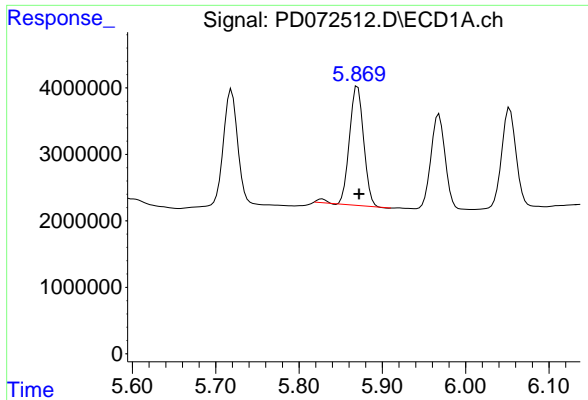
#13 Dieldrin
 R.T.: 6.266 min
 Delta R.T.: -0.003 min
 Response: 167017966
 Conc: 10.23 ng/ml



#14 Endrin
 R.T.: 5.572 min
 Delta R.T.: -0.003 min
 Response: 19923319
 Conc: 7.78 ng/ml



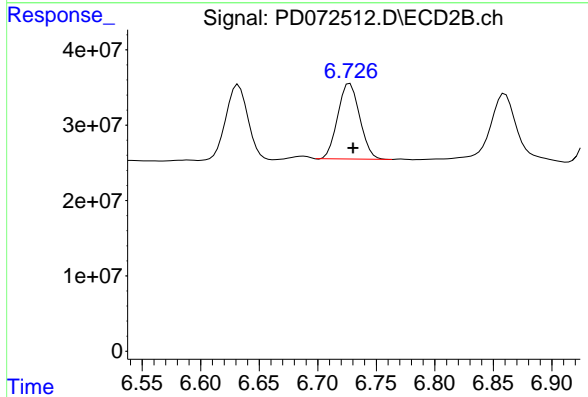
#14 Endrin
 R.T.: 6.498 min
 Delta R.T.: -0.002 min
 Response: 121799541
 Conc: 8.86 ng/ml



#15 Endosulfan II

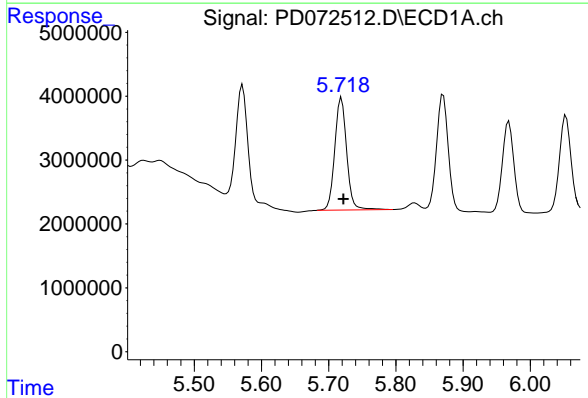
R.T.: 5.870 min
 Delta R.T.: -0.002 min
 Response: 21580040
 Conc: 8.96 ng/ml

Instrument :
 ECD_D
 ClientSampleId :



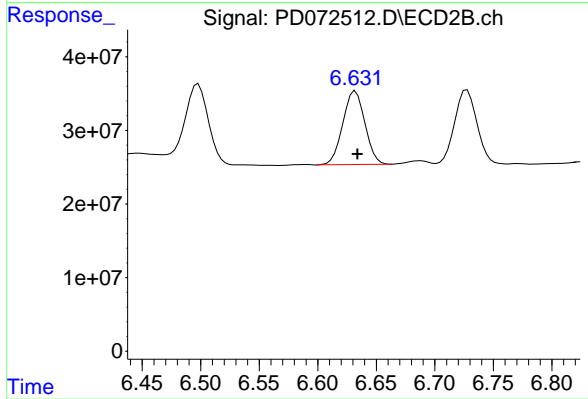
#15 Endosulfan II

R.T.: 6.728 min
 Delta R.T.: -0.002 min
 Response: 130817680
 Conc: 10.25 ng/ml



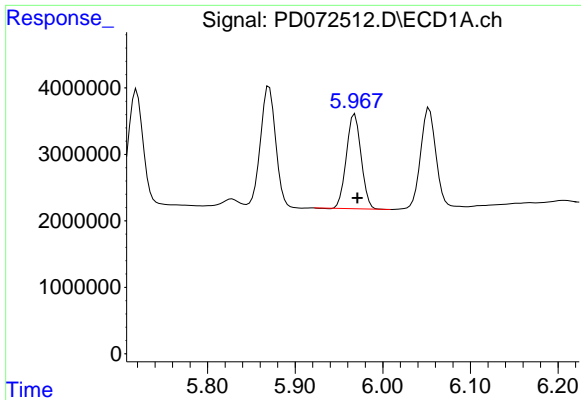
#16 4,4'-DDD

R.T.: 5.719 min
 Delta R.T.: -0.003 min
 Response: 21538153
 Conc: 9.48 ng/ml



#16 4,4'-DDD

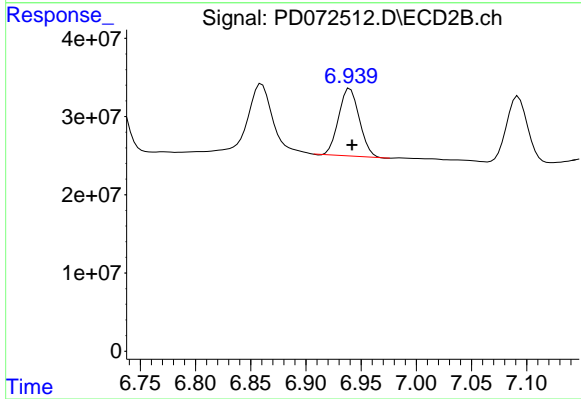
R.T.: 6.632 min
 Delta R.T.: -0.002 min
 Response: 131306640
 Conc: 10.59 ng/ml



#17 4,4'-DDT

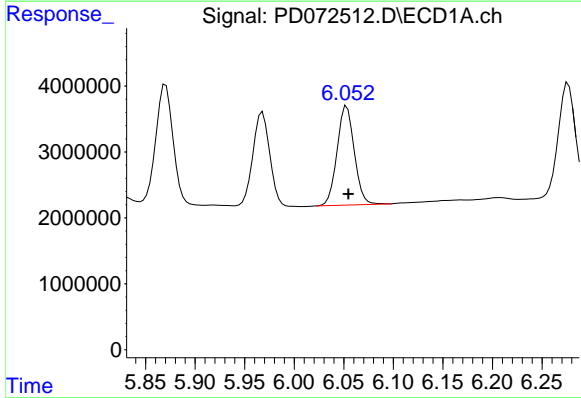
R.T.: 5.968 min
 Delta R.T.: -0.003 min
 Response: 16677531
 Conc: 7.55 ng/ml

Instrument :
 ECD_D
 ClientSampleId :



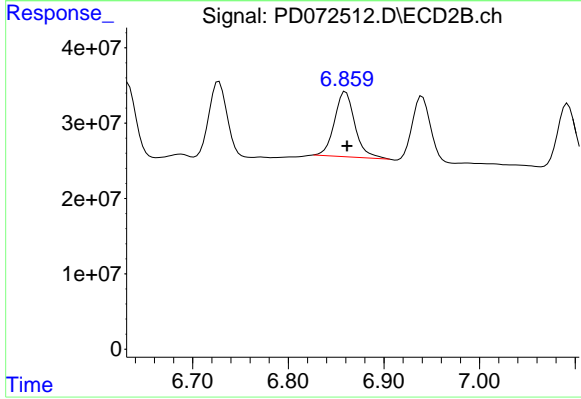
#17 4,4'-DDT

R.T.: 6.940 min
 Delta R.T.: -0.002 min
 Response: 112486010
 Conc: 9.35 ng/ml



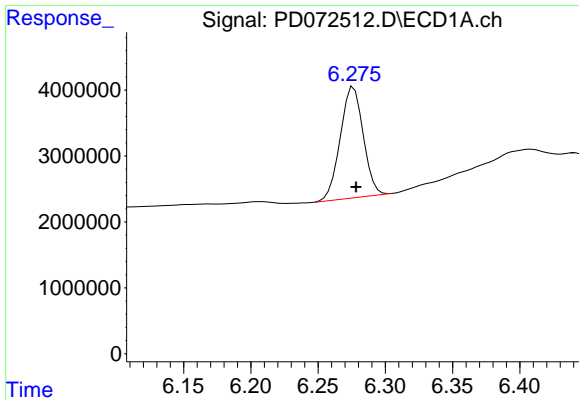
#18 Endrin aldehyde

R.T.: 6.053 min
 Delta R.T.: -0.002 min
 Response: 18216032
 Conc: 8.84 ng/ml



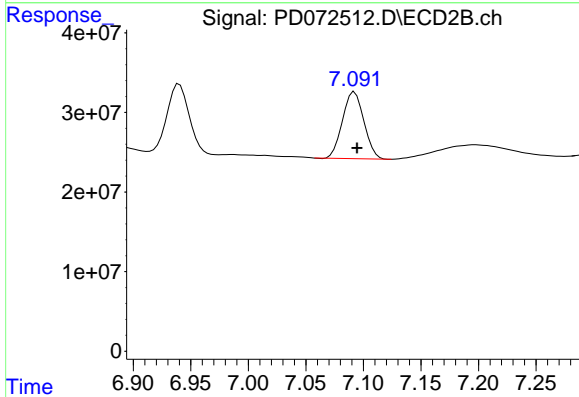
#18 Endrin aldehyde

R.T.: 6.860 min
 Delta R.T.: -0.001 min
 Response: 127812722
 Conc: 11.88 ng/ml

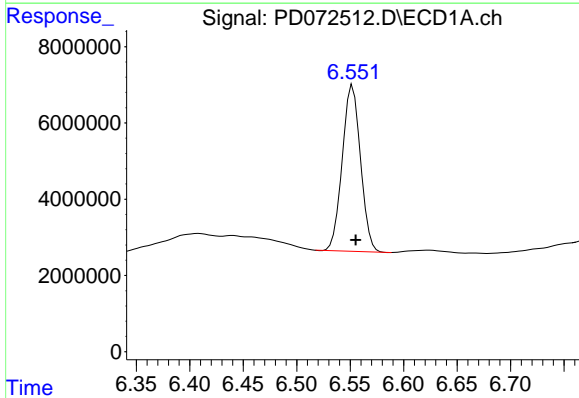


#19 Endosulfan Sulfate
 R.T.: 6.276 min
 Delta R.T.: -0.002 min
 Response: 19940748
 Conc: 8.26 ng/ml

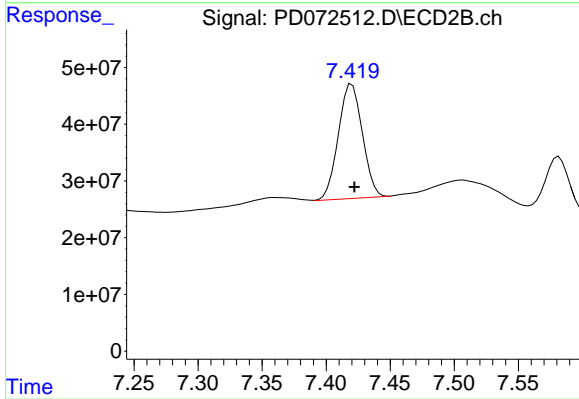
Instrument :
 ECD_D
 ClientSampleId :



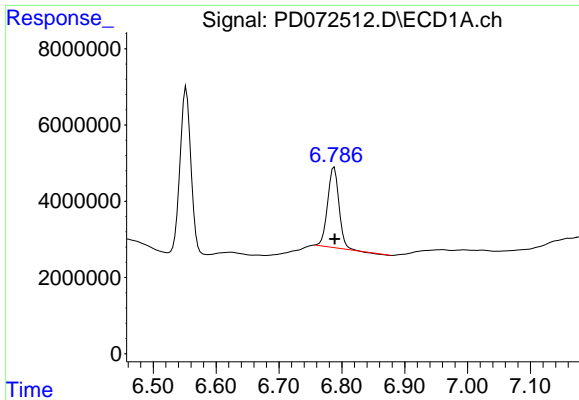
#19 Endosulfan Sulfate
 R.T.: 7.092 min
 Delta R.T.: -0.002 min
 Response: 109254899
 Conc: 9.15 ng/ml



#20 Methoxychlor
 R.T.: 6.552 min
 Delta R.T.: -0.003 min
 Response: 51762043
 Conc: 43.37 ng/ml



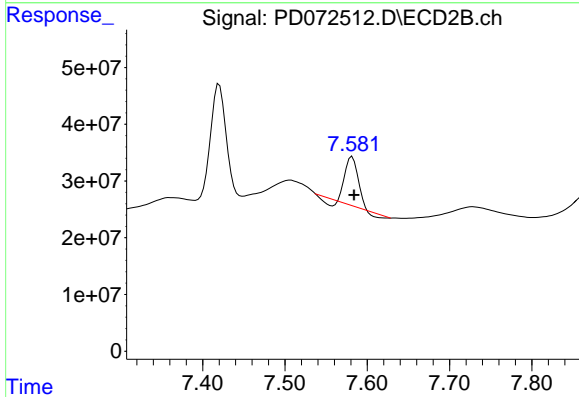
#20 Methoxychlor
 R.T.: 7.420 min
 Delta R.T.: -0.002 min
 Response: 263043201
 Conc: 47.92 ng/ml



#21 Endrin ketone

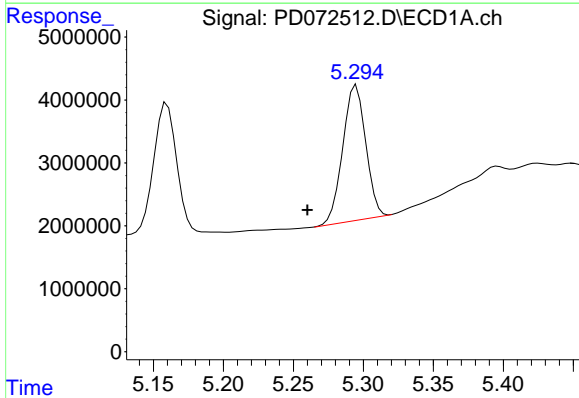
R.T.: 6.788 min
 Delta R.T.: -0.001 min
 Response: 25946354
 Conc: 9.10 ng/ml

Instrument :
 ECD_D
 ClientSampleId :



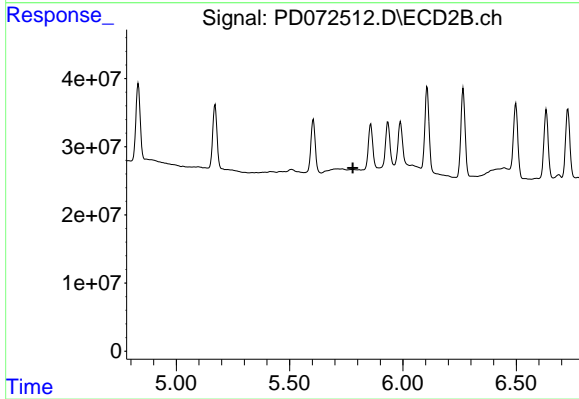
#21 Endrin ketone

R.T.: 7.582 min
 Delta R.T.: -0.003 min
 Response: 85083706
 Conc: 6.64 ng/ml



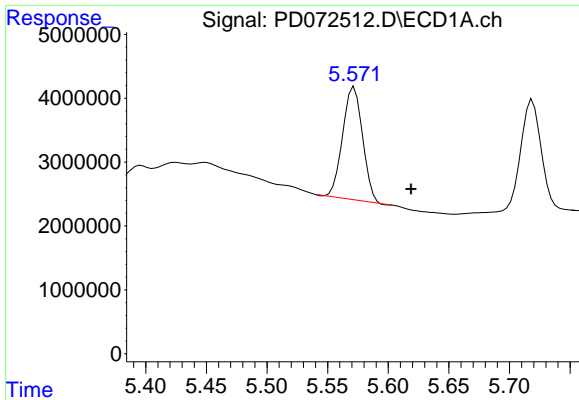
#22 Toxaphene-1

R.T.: 5.295 min
 Delta R.T.: 0.035 min
 Response: 24498458
 Conc: 1808.21 ng/ml



#22 Toxaphene-1

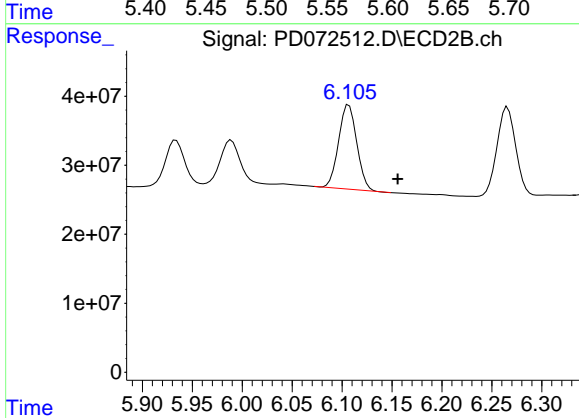
R.T.: 0.000 min
 Exp R.T.: 5.779 min
 Response: 0
 Conc: N.D.



#23 Toxaphene-2

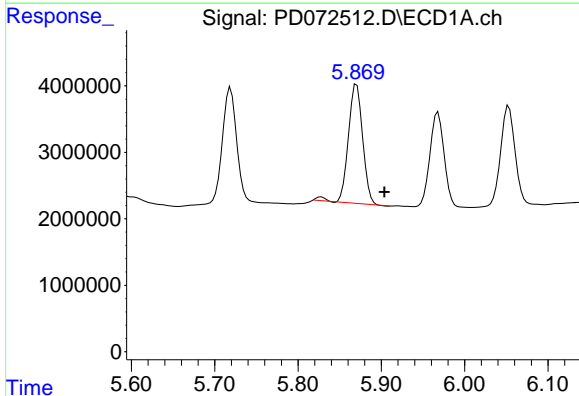
R.T.: 5.572 min
 Delta R.T.: -0.047 min
 Response: 19923319
 Conc: 1456.79 ng/ml

Instrument :
 ECD_D
 ClientSampleId :



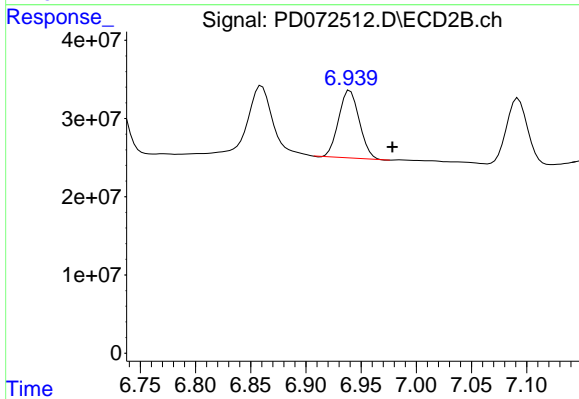
#23 Toxaphene-2

R.T.: 6.107 min
 Delta R.T.: -0.049 min
 Response: 154103033
 Conc: 1355.68 ng/ml



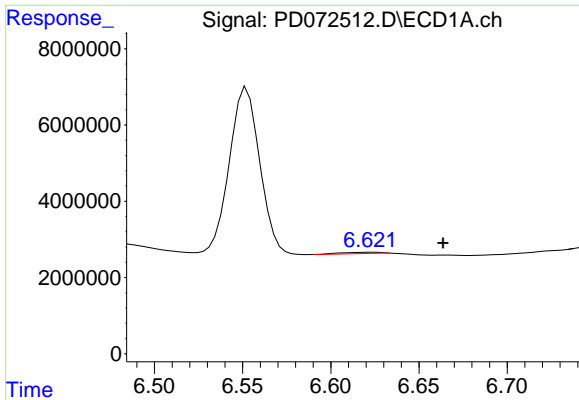
#24 Toxaphene-3

R.T.: 5.870 min
 Delta R.T.: -0.034 min
 Response: 21580040
 Conc: 1186.12 ng/ml



#24 Toxaphene-3

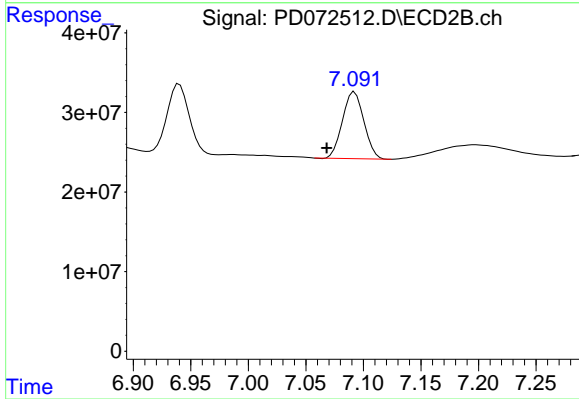
R.T.: 6.940 min
 Delta R.T.: -0.038 min
 Response: 112486010
 Conc: 400.37 ng/ml



#25 Toxaphene-4

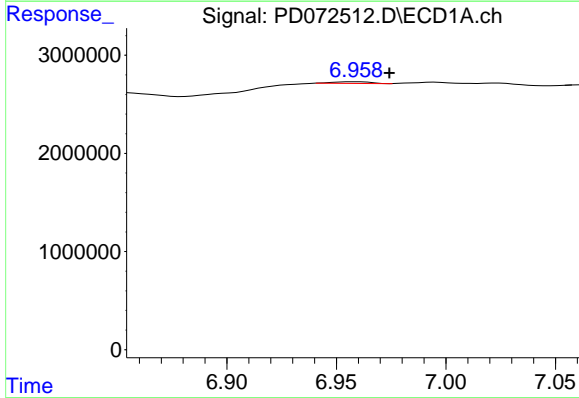
R.T.: 6.623 min
 Delta R.T.: -0.041 min
 Response: 631803
 Conc: 8.38 ng/ml

Instrument :
 ECD_D
 ClientSampleId :



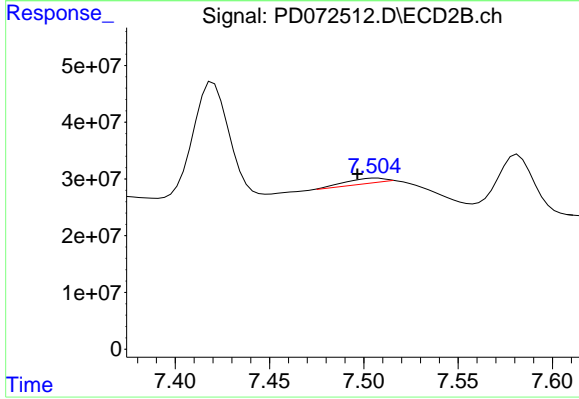
#25 Toxaphene-4

R.T.: 7.092 min
 Delta R.T.: 0.024 min
 Response: 109254899
 Conc: 471.12 ng/ml



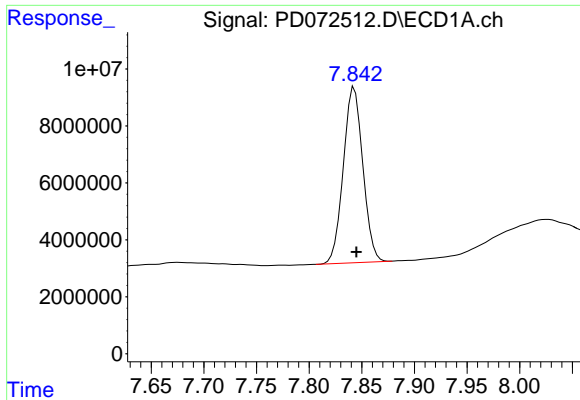
#26 Toxaphene-5

R.T.: 6.959 min
 Delta R.T.: -0.015 min
 Response: 203671
 Conc: 4.96 ng/ml



#26 Toxaphene-5

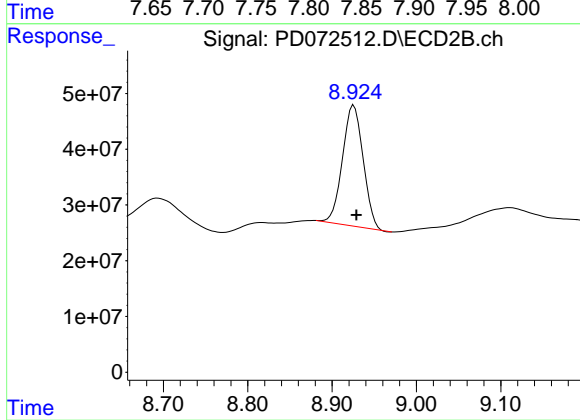
R.T.: 7.507 min
 Delta R.T.: 0.010 min
 Response: 15427811
 Conc: 102.92 ng/ml



#27 Decachlorobiphenyl

R.T.: 7.843 min
Delta R.T.: -0.002 min
Response: 79829813
Conc: 39.88 ng/ml

Instrument :
ECD_D
ClientSampleId :



#27 Decachlorobiphenyl

R.T.: 8.926 min
Delta R.T.: -0.003 min
Response: 370856049
Conc: 41.20 ng/ml