

Data Path : Z:\pestpcbsrv\HPCHEM1\ECD_D\Data\PD111725\
 Data File : PD091217.D
 Signal(s) : Signal #1: ECD1A.ch Signal #2: ECD2B.ch
 Acq On : 17 Nov 2025 09:35
 Operator : AR\AJ
 Sample : HEXANE
 Misc :
 ALS Vial : 1 Sample Multiplier: 1

Instrument :
 ECD_D
 ClientSampleId :

Integration File signal 1: autoint1.e
 Integration File signal 2: autoint2.e
 Quant Time: Nov 18 01:07:22 2025
 Quant Method : Z:\pestpcbsrv\HPCHEM1\ECD_D\Method\PD111525.M
 Quant Title : GC Extractables
 QLast Update : Sat Nov 15 04:46:13 2025
 Response via : Initial Calibration
 Integrator: ChemStation

Volume Inj. : 1 µl
 Signal #1 Phase : ZB-MR2 Signal #2 Phase: ZB-MR2
 Signal #1 Info : 30M x 0.32mm x0.5 Signal #2 Info : 30M x 0.32mm x 0.25µm

Compound	RT#1	RT#2	Resp#1	Resp#2	ng/ml	ng/ml

System Monitoring Compounds						
1) SA Tetrachlo...	3.549	2.860	622901	11344798	0.181	0.310 #
28) SA Decachlor...	0.000	8.039	0	36331086	N.D.	0.918 #
Target Compounds						
2) A alpha-BHC	4.009f	3.388	952858	2346551	0.119	0.037 #
3) MA gamma-BHC...	4.334	3.724	141677	2171610	0.019	0.038 #
4) MA Heptachlor	4.932	4.077	263668	2489697	0.037	0.045
5) MB Aldrin	5.270	4.362	282754	2769229	0.039	0.049 #
6) B beta-BHC	4.521	4.016	210371	3263198	0.072	0.136 #
7) B delta-BHC	4.772	4.254	957178	4987084	0.129	0.085 #
8) B Heptachlo...	5.691	4.863	382980	9396398	0.059	0.184 #
9) A Endosulfan I	6.077	5.225	187291	3857743	0.030	0.081 #
10) B gamma-Chl...	5.948	5.120	228942	6023519	0.035	0.110 #
11) B alpha-Chl...	6.007	5.180	1214576	5995694	0.176	0.115 #
12) B 4,4'-DDE	6.211f	5.382f	-59430	2008104	N.D.	0.038
13) MA Dieldrin	6.346	5.506	77034	1695209	0.012	0.031 #
14) MA Endrin	6.586f	5.778	238874	5166816	0.048	0.114 #
15) B Endosulfa...	6.791	6.072	1314564	1185752	0.236	0.025 #
16) A 4,4'-DDD	6.708	5.924	464190	120813	0.095	0.002 #
17) MA 4,4'-DDT	7.033f	6.185	118721	3704718	0.029	0.095 #
18) B Endrin al...	6.922	6.248	283967	2749390	0.068	0.078
19) B Endosulfa...	7.156	6.477	435469	517953	0.085	0.012 #
20) A Methoxychlor	7.460f	6.747	997426	1782211	0.459	0.089 #
21) B Endrin ke...	7.633	6.989	1261267	773082	0.224	0.015 #
22) Mirex	8.121f	7.173	-21421	289495	N.D.	0.009
23) Chlordane-1	4.708	3.881	125552	423721	0.510	0.246 #
24) Chlordane-2	5.217	4.466	174018	870100	0.705	0.497 #
25) Chlordane-3	5.948	5.120	228942	6023519	0.237	1.047 #
26) Chlordane-4	6.007	5.180	1214576	5995694	1.011	1.253
27) Chlordane-5	6.840f	6.072	478536	1185752	2.422	0.584 #

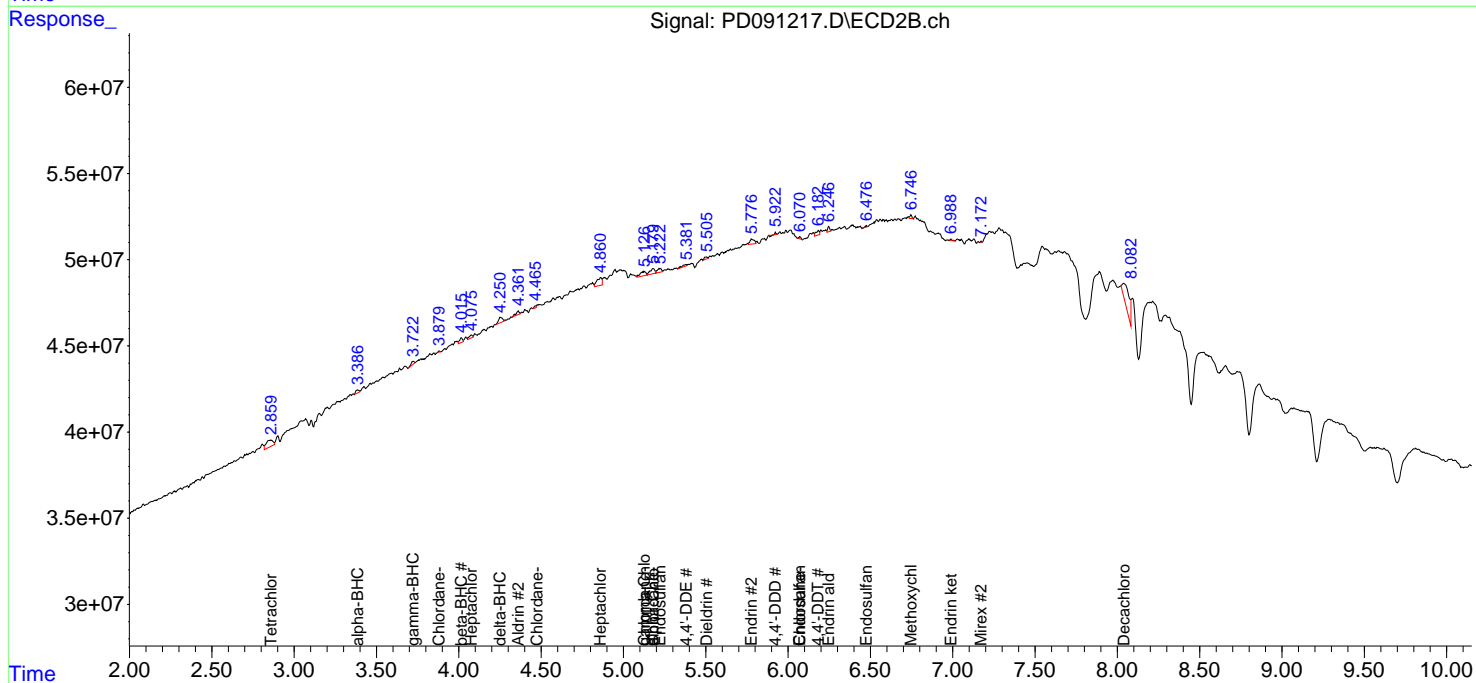
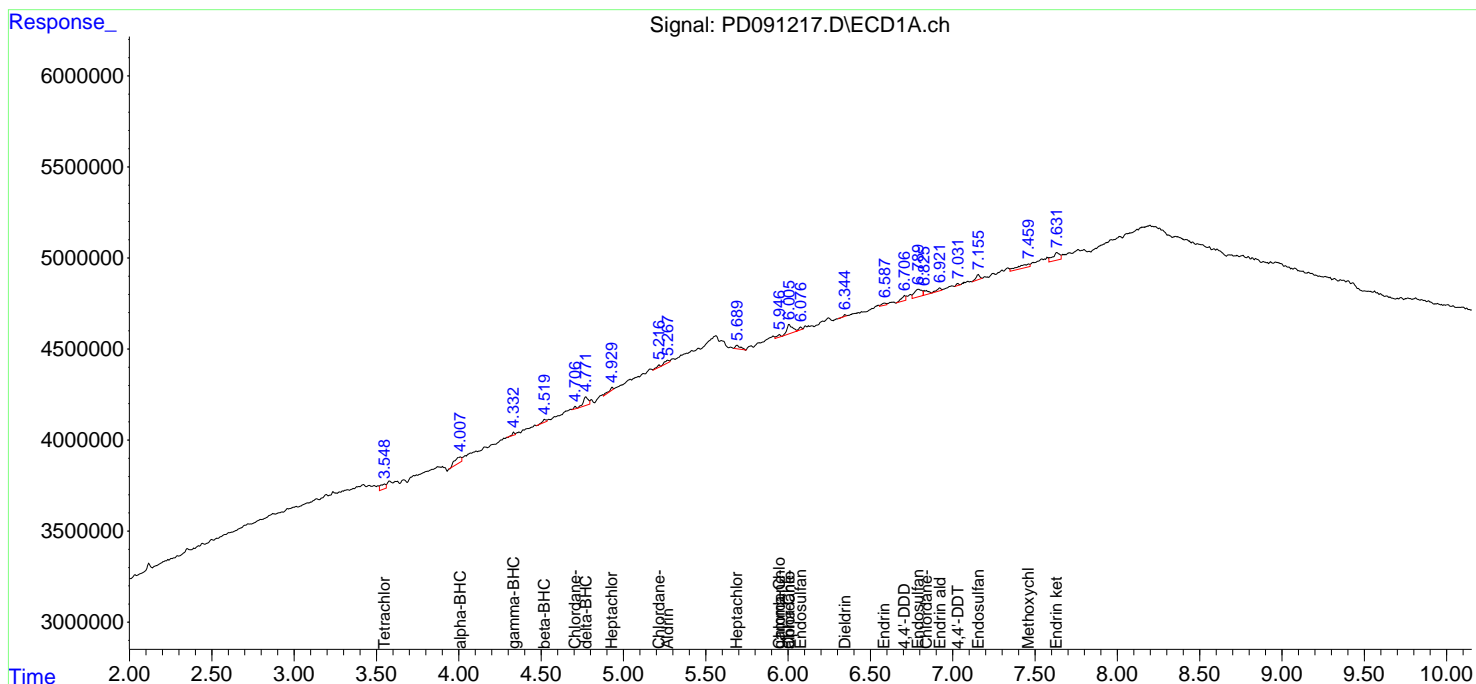
(f)=RT Delta > 1/2 Window (#)=Amounts differ by > 25% (m)=manual int.

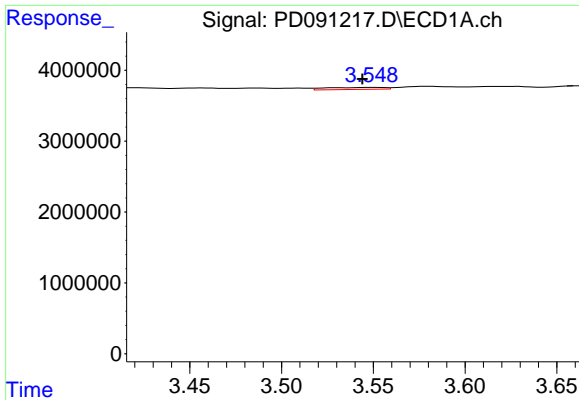
Data Path : Z:\pestpcbsrv\HPCHEM1\ECD_D\Data\PD111725\
 Data File : PD091217.D
 Signal(s) : Signal #1: ECD1A.ch Signal #2: ECD2B.ch
 Acq On : 17 Nov 2025 09:35
 Operator : AR\AJ
 Sample : HEXANE
 Misc :
 ALS Vial : 1 Sample Multiplier: 1

Instrument :
 ECD_D
 ClientSampleId :

Integration File signal 1: autoint1.e
 Integration File signal 2: autoint2.e
 Quant Time: Nov 18 01:07:22 2025
 Quant Method : Z:\pestpcbsrv\HPCHEM1\ECD_D\Method\PD111525.M
 Quant Title : GC Extractables
 QLast Update : Sat Nov 15 04:46:13 2025
 Response via : Initial Calibration
 Integrator: ChemStation

Volume Inj. : 1 µl
 Signal #1 Phase : ZB-MR1 Signal #2 Phase: ZB-MR2
 Signal #1 Info : 30M x 0.32mm x0.5 Signal #2 Info : 30M x 0.32mm x 0.25µm

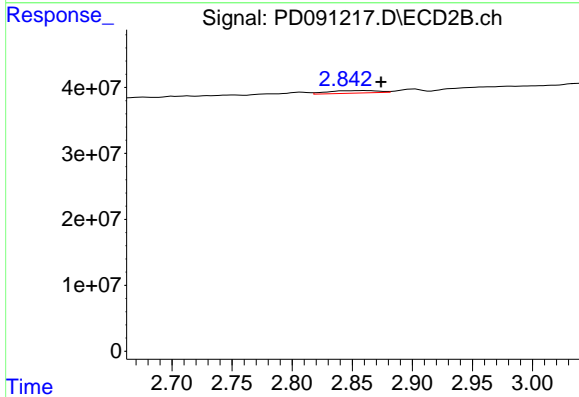




#1 Tetrachloro-m-xylene

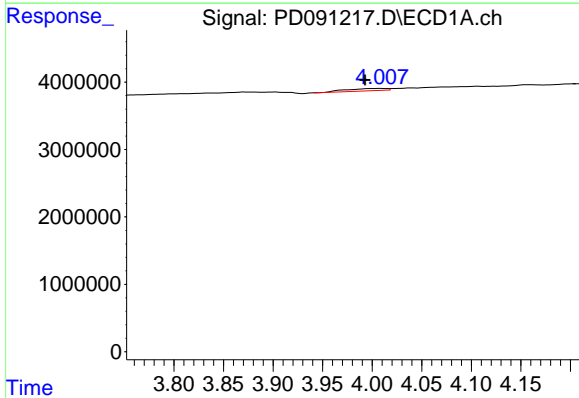
R.T.: 3.549 min
 Delta R.T.: 0.005 min
 Response: 622901
 Conc: 0.18 ng/ml

Instrument :
 ECD_D
 ClientSampleId :



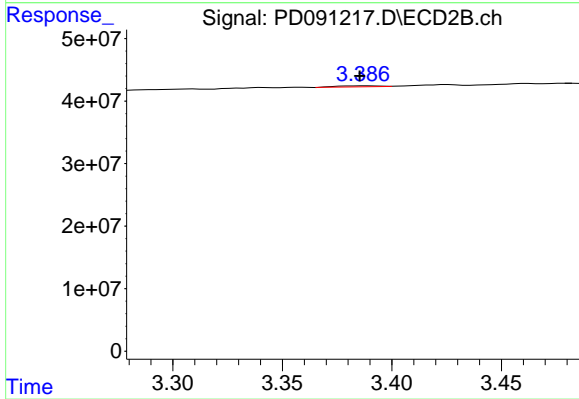
#1 Tetrachloro-m-xylene

R.T.: 2.860 min
 Delta R.T.: -0.014 min
 Response: 11344798
 Conc: 0.31 ng/ml



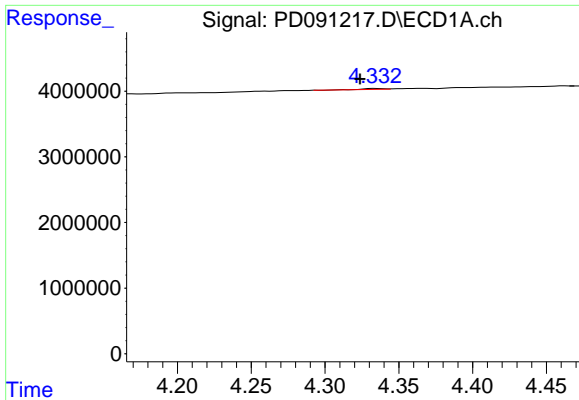
#2 alpha-BHC

R.T.: 4.009 min
 Delta R.T.: 0.016 min
 Response: 952858
 Conc: 0.12 ng/ml



#2 alpha-BHC

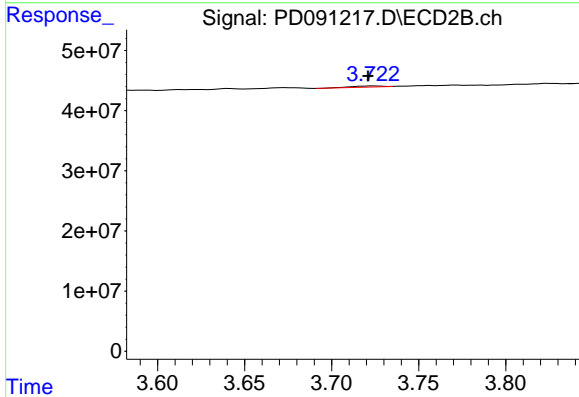
R.T.: 3.388 min
 Delta R.T.: 0.003 min
 Response: 2346551
 Conc: 0.04 ng/ml



#3 gamma-BHC (Lindane)

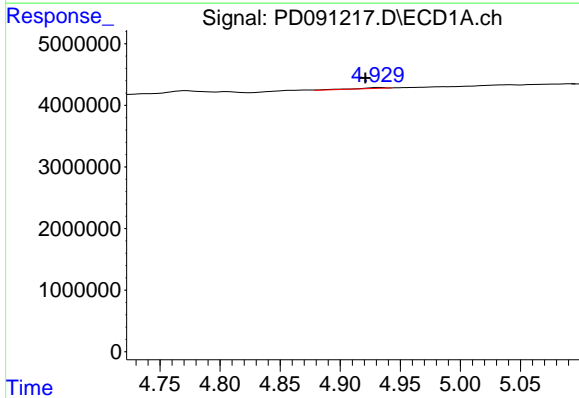
R.T.: 4.334 min
 Delta R.T.: 0.010 min
 Response: 141677
 Conc: 0.02 ng/ml

Instrument :
 ECD_D
 ClientSampleId :



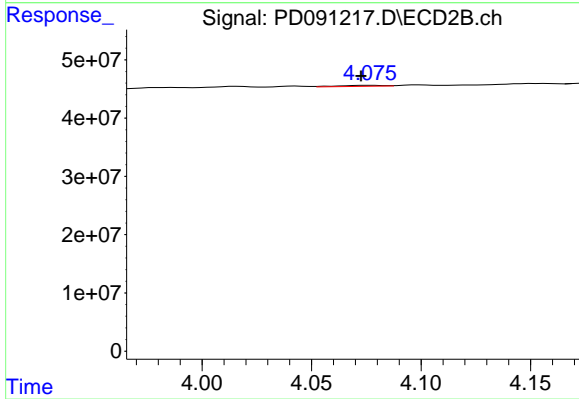
#3 gamma-BHC (Lindane)

R.T.: 3.724 min
 Delta R.T.: 0.004 min
 Response: 2171610
 Conc: 0.04 ng/ml



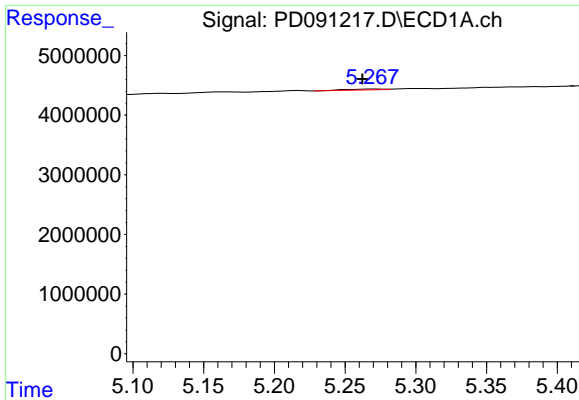
#4 Heptachlor

R.T.: 4.932 min
 Delta R.T.: 0.011 min
 Response: 263668
 Conc: 0.04 ng/ml



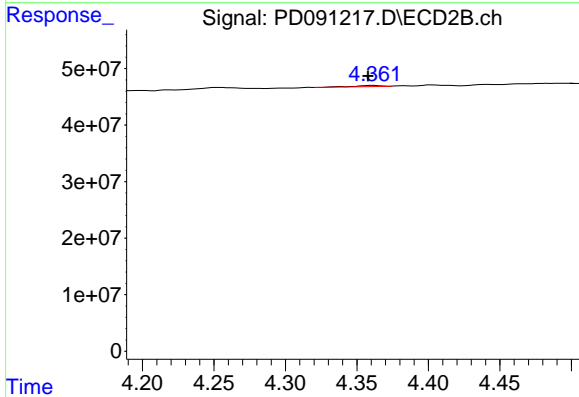
#4 Heptachlor

R.T.: 4.077 min
 Delta R.T.: 0.004 min
 Response: 2489697
 Conc: 0.05 ng/ml

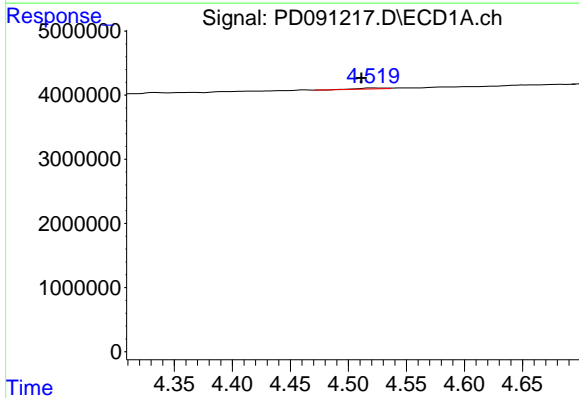


#5 Aldrin
 R.T.: 5.270 min
 Delta R.T.: 0.007 min
 Response: 282754
 Conc: 0.04 ng/ml

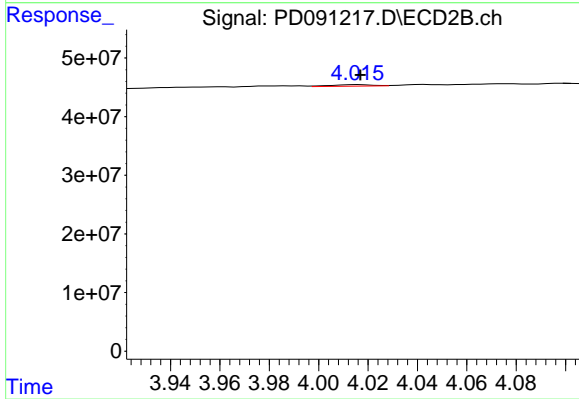
Instrument :
 ECD_D
 ClientSampleId :



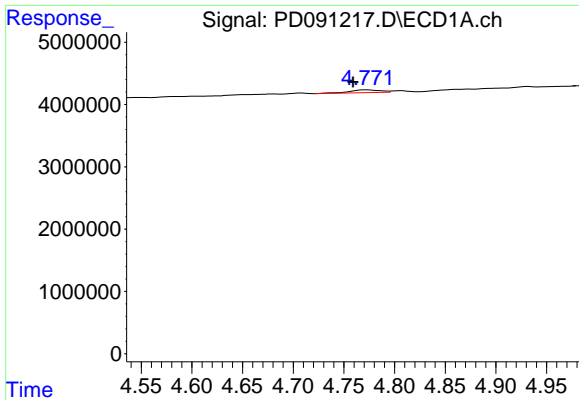
#5 Aldrin
 R.T.: 4.362 min
 Delta R.T.: 0.004 min
 Response: 2769229
 Conc: 0.05 ng/ml



#6 beta-BHC
 R.T.: 4.521 min
 Delta R.T.: 0.010 min
 Response: 210371
 Conc: 0.07 ng/ml



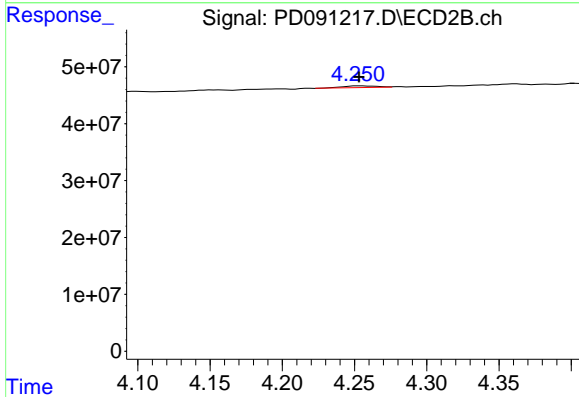
#6 beta-BHC
 R.T.: 4.016 min
 Delta R.T.: 0.000 min
 Response: 3263198
 Conc: 0.14 ng/ml



#7 delta-BHC

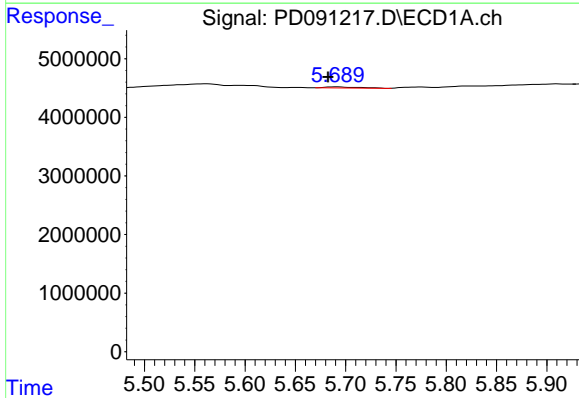
R.T.: 4.772 min
 Delta R.T.: 0.013 min
 Response: 957178
 Conc: 0.13 ng/ml

Instrument :
 ECD_D
 ClientSampleId :



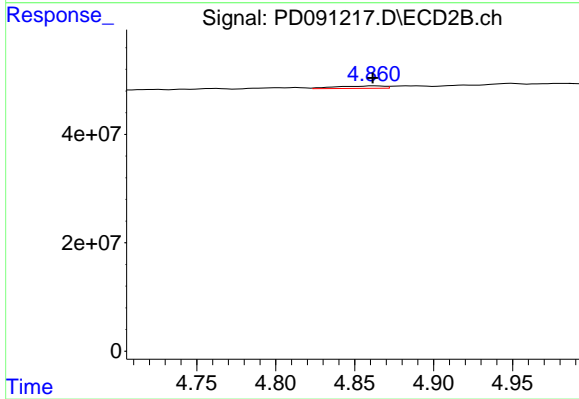
#7 delta-BHC

R.T.: 4.254 min
 Delta R.T.: 0.000 min
 Response: 4987084
 Conc: 0.09 ng/ml



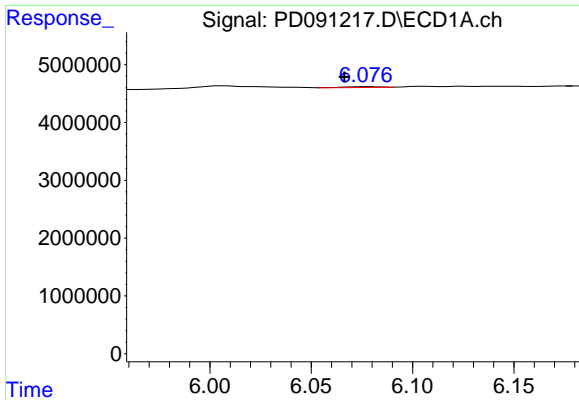
#8 Heptachlor epoxide

R.T.: 5.691 min
 Delta R.T.: 0.008 min
 Response: 382980
 Conc: 0.06 ng/ml



#8 Heptachlor epoxide

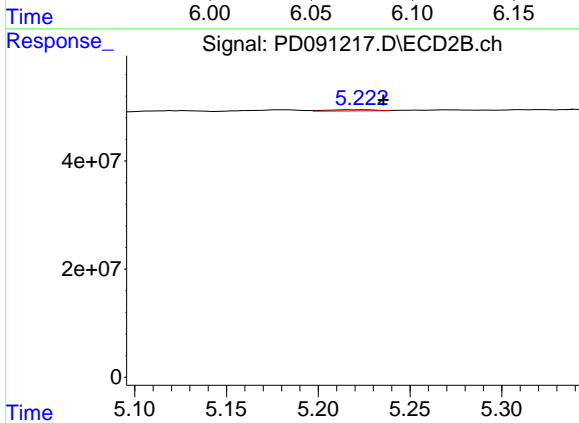
R.T.: 4.863 min
 Delta R.T.: 0.001 min
 Response: 9396398
 Conc: 0.18 ng/ml



#9 Endosulfan I

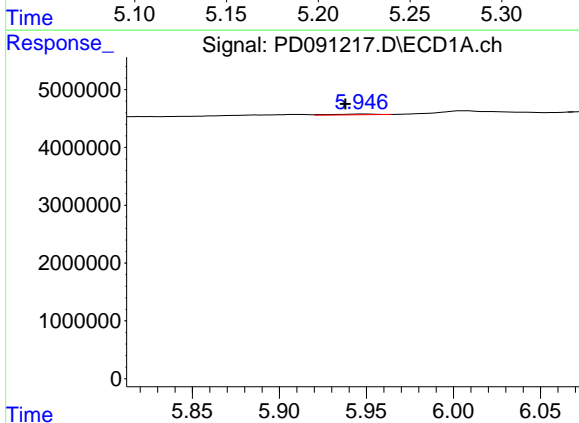
R.T.: 6.077 min
 Delta R.T.: 0.011 min
 Response: 187291
 Conc: 0.03 ng/ml

Instrument :
 ECD_D
 ClientSampleId :



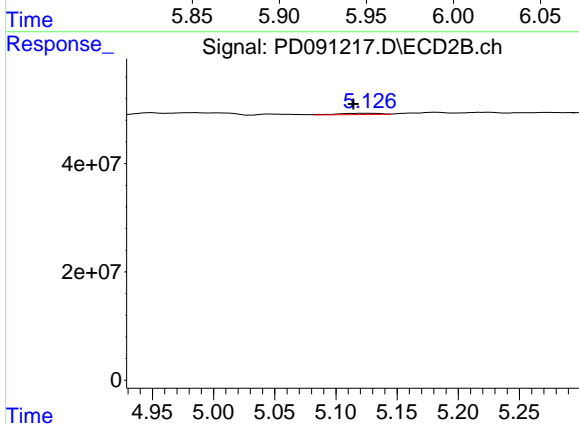
#9 Endosulfan I

R.T.: 5.225 min
 Delta R.T.: -0.011 min
 Response: 3857743
 Conc: 0.08 ng/ml



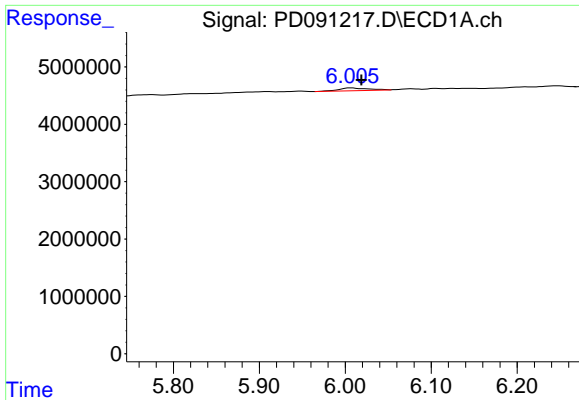
#10 gamma-Chlordane

R.T.: 5.948 min
 Delta R.T.: 0.010 min
 Response: 228942
 Conc: 0.04 ng/ml



#10 gamma-Chlordane

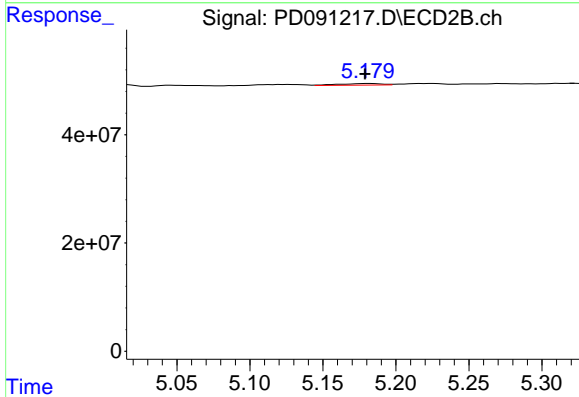
R.T.: 5.120 min
 Delta R.T.: 0.006 min
 Response: 6023519
 Conc: 0.11 ng/ml



#11 alpha-Chlordane

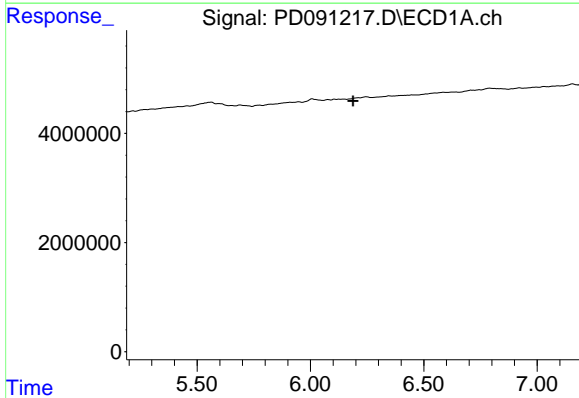
R.T.: 6.007 min
 Delta R.T.: -0.012 min
 Response: 1214576
 Conc: 0.18 ng/ml

Instrument :
 ECD_D
 ClientSampleId :



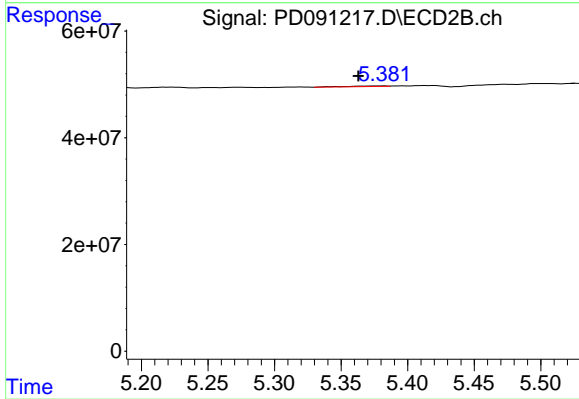
#11 alpha-Chlordane

R.T.: 5.180 min
 Delta R.T.: 0.002 min
 Response: 5995694
 Conc: 0.11 ng/ml



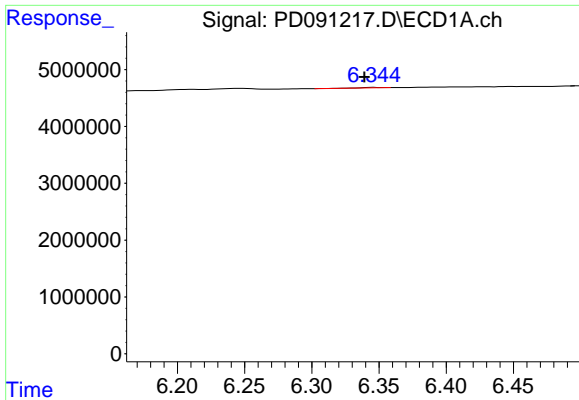
#12 4,4'-DDE

R.T.: 6.211 min
 Delta R.T.: 0.022 min
 Response: -59430
 Conc: N.D.



#12 4,4'-DDE

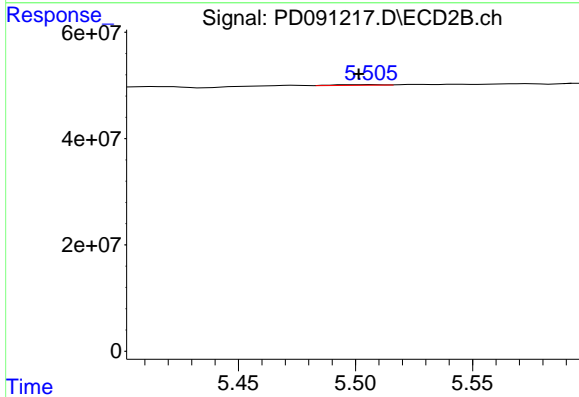
R.T.: 5.382 min
 Delta R.T.: 0.019 min
 Response: 2008104
 Conc: 0.04 ng/ml



#13 Dieldrin

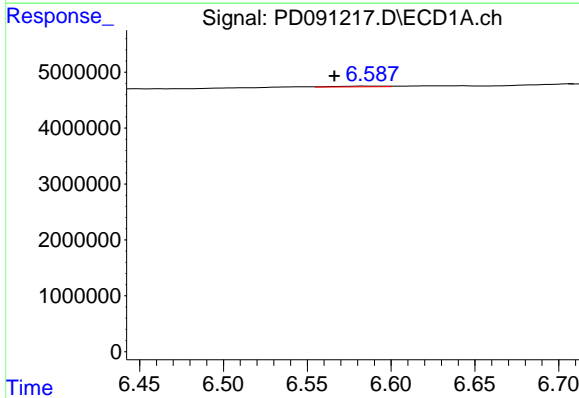
R.T.: 6.346 min
 Delta R.T.: 0.007 min
 Response: 77034
 Conc: 0.01 ng/ml

Instrument :
 ECD_D
 ClientSampleId :



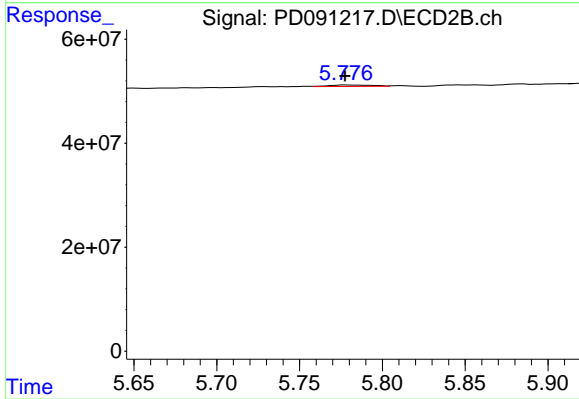
#13 Dieldrin

R.T.: 5.506 min
 Delta R.T.: 0.005 min
 Response: 1695209
 Conc: 0.03 ng/ml



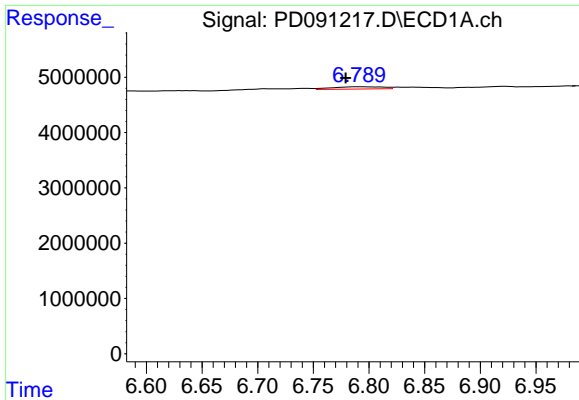
#14 Endrin

R.T.: 6.586 min
 Delta R.T.: 0.020 min
 Response: 238874
 Conc: 0.05 ng/ml



#14 Endrin

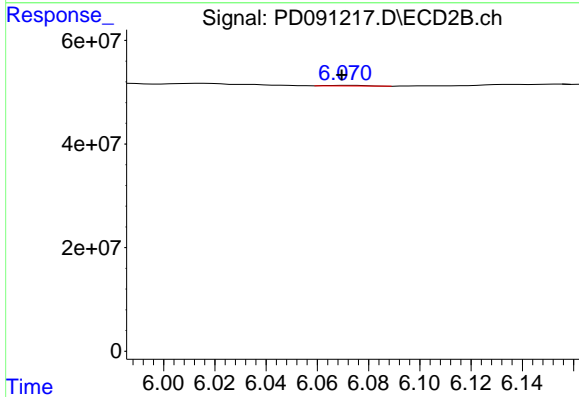
R.T.: 5.778 min
 Delta R.T.: 0.000 min
 Response: 5166816
 Conc: 0.11 ng/ml



#15 Endosulfan II

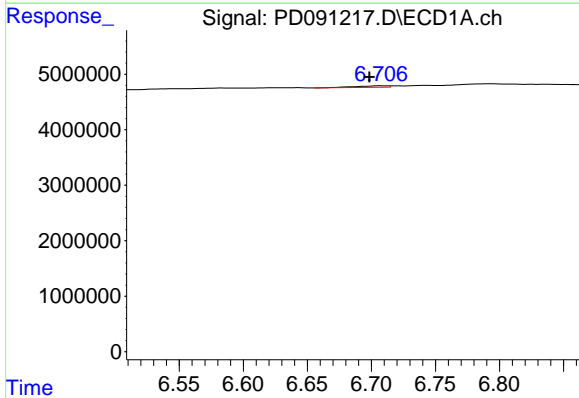
R.T.: 6.791 min
 Delta R.T.: 0.012 min
 Response: 1314564
 Conc: 0.24 ng/ml

Instrument :
 ECD_D
 ClientSampleId :



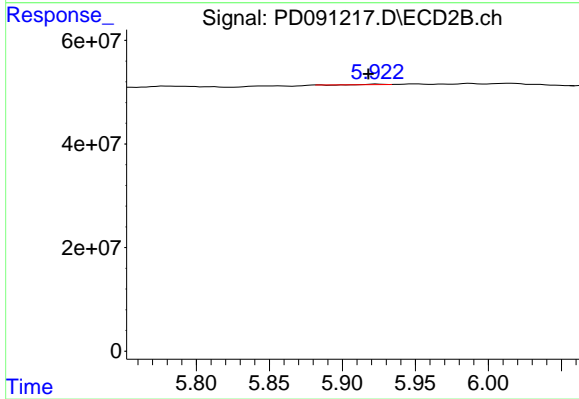
#15 Endosulfan II

R.T.: 6.072 min
 Delta R.T.: 0.002 min
 Response: 1185752
 Conc: 0.03 ng/ml



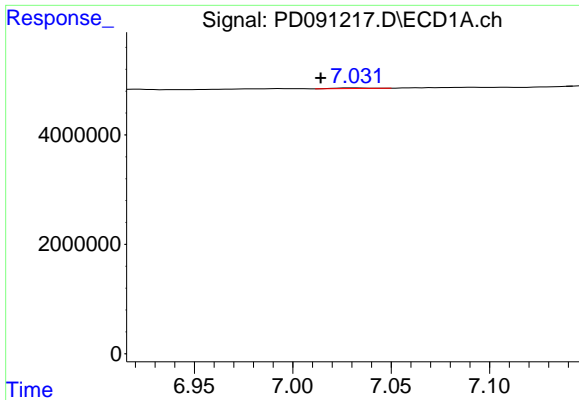
#16 4,4'-DDD

R.T.: 6.708 min
 Delta R.T.: 0.009 min
 Response: 464190
 Conc: 0.09 ng/ml



#16 4,4'-DDD

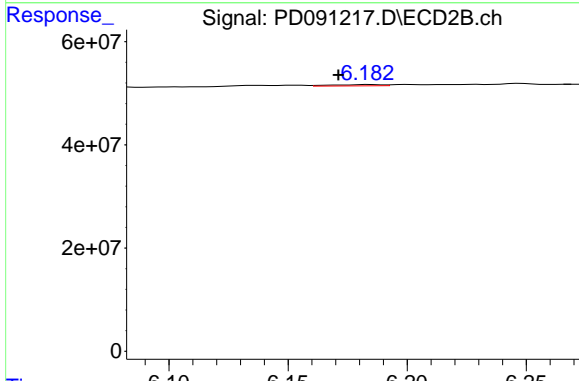
R.T.: 5.924 min
 Delta R.T.: 0.006 min
 Response: 120813
 Conc: 0.00 ng/ml



#17 4,4'-DDT

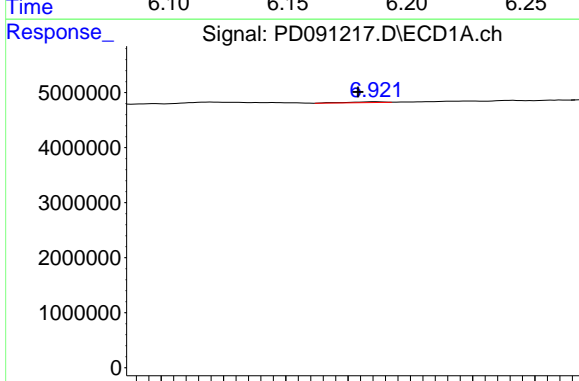
R.T.: 7.033 min
 Delta R.T.: 0.018 min
 Response: 118721
 Conc: 0.03 ng/ml

Instrument :
 ECD_D
 ClientSampleId :



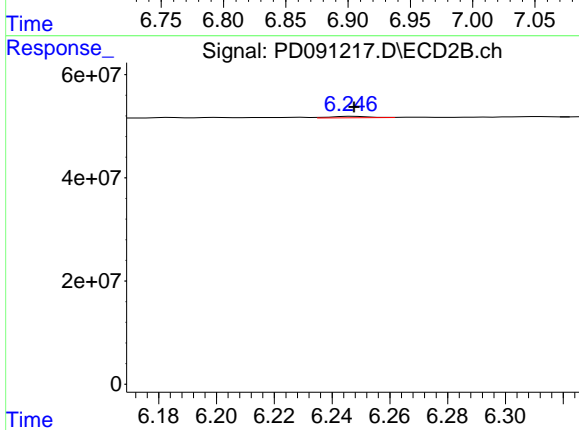
#17 4,4'-DDT

R.T.: 6.185 min
 Delta R.T.: 0.013 min
 Response: 3704718
 Conc: 0.09 ng/ml



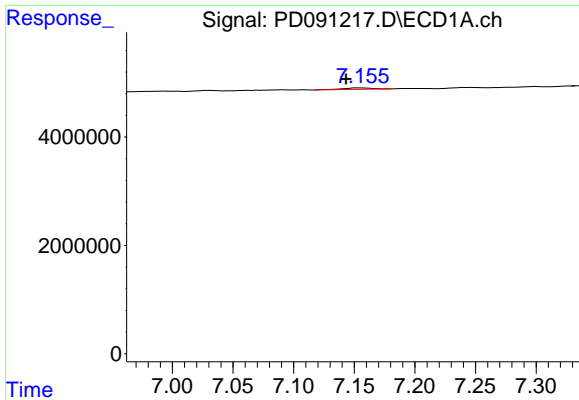
#18 Endrin aldehyde

R.T.: 6.922 min
 Delta R.T.: 0.014 min
 Response: 283967
 Conc: 0.07 ng/ml



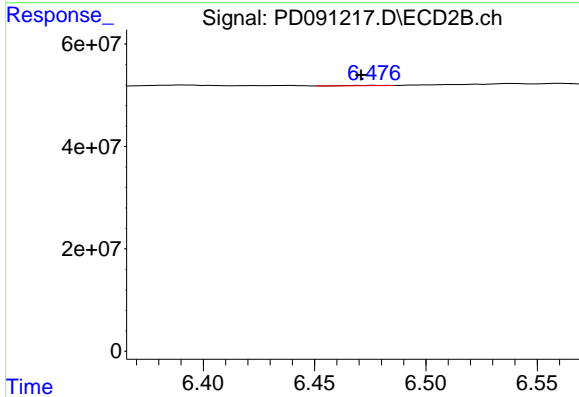
#18 Endrin aldehyde

R.T.: 6.248 min
 Delta R.T.: 0.000 min
 Response: 2749390
 Conc: 0.08 ng/ml

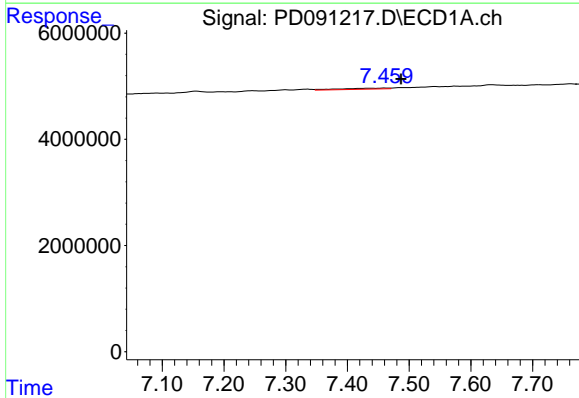


#19 Endosulfan Sulfate
 R.T.: 7.156 min
 Delta R.T.: 0.013 min
 Response: 435469
 Conc: 0.08 ng/ml

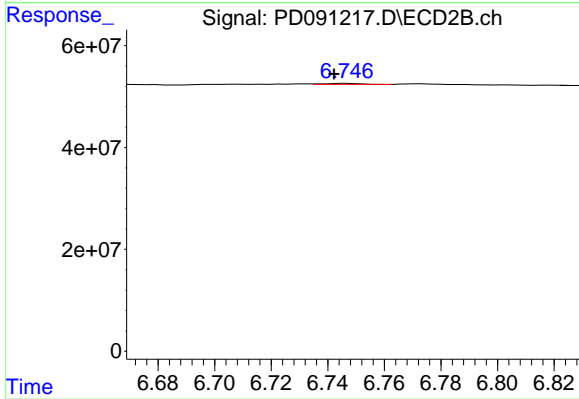
Instrument :
 ECD_D
 ClientSampleId :



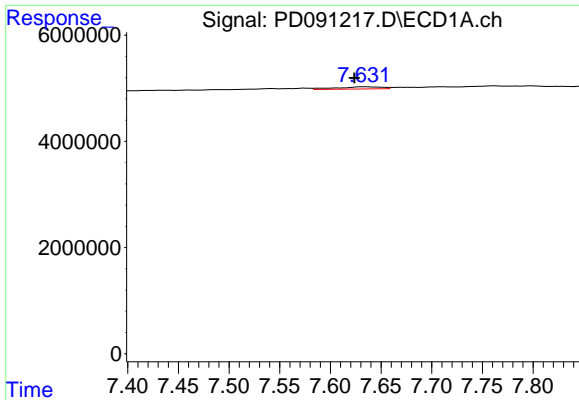
#19 Endosulfan Sulfate
 R.T.: 6.477 min
 Delta R.T.: 0.006 min
 Response: 517953
 Conc: 0.01 ng/ml



#20 Methoxychlor
 R.T.: 7.460 min
 Delta R.T.: -0.027 min
 Response: 997426
 Conc: 0.46 ng/ml



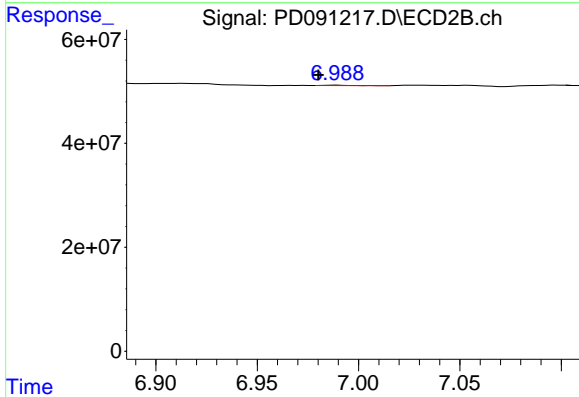
#20 Methoxychlor
 R.T.: 6.747 min
 Delta R.T.: 0.005 min
 Response: 1782211
 Conc: 0.09 ng/ml



#21 Endrin ketone

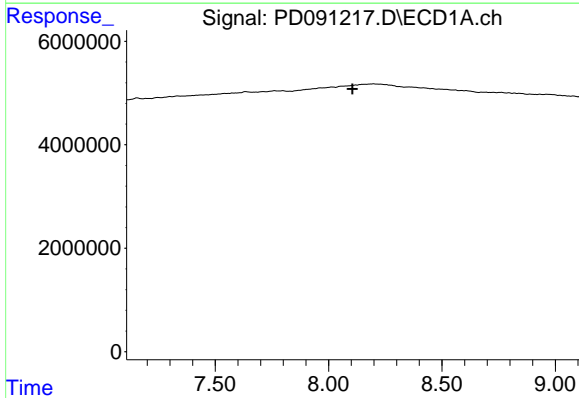
R.T.: 7.633 min
 Delta R.T.: 0.009 min
 Response: 1261267
 Conc: 0.22 ng/ml

Instrument :
 ECD_D
 ClientSampleId :



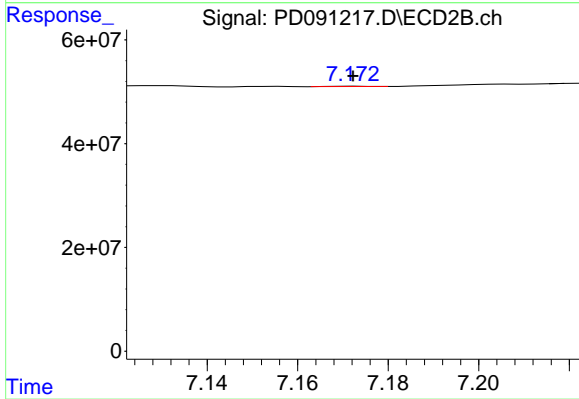
#21 Endrin ketone

R.T.: 6.989 min
 Delta R.T.: 0.009 min
 Response: 773082
 Conc: 0.02 ng/ml



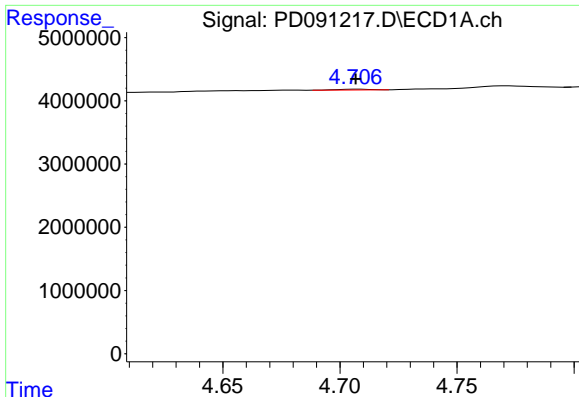
#22 Mirex

R.T.: 8.121 min
 Delta R.T.: 0.015 min
 Response: -21421
 Conc: N.D.



#22 Mirex

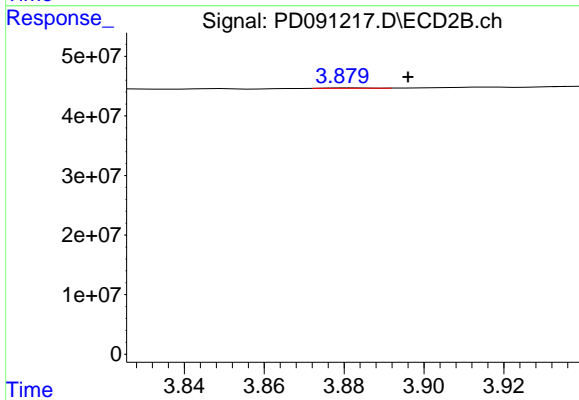
R.T.: 7.173 min
 Delta R.T.: 0.000 min
 Response: 289495
 Conc: 0.01 ng/ml



#23 Chlordane-1

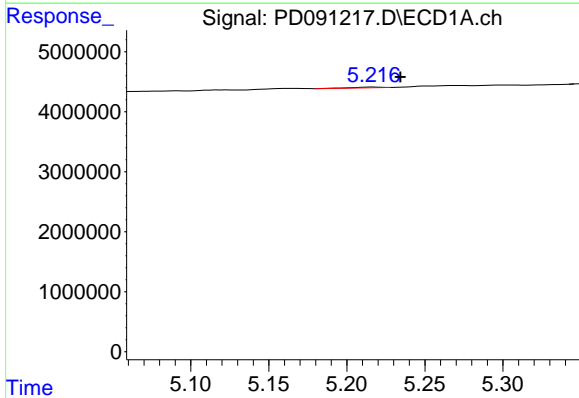
R.T.: 4.708 min
 Delta R.T.: 0.000 min
 Response: 125552
 Conc: 0.51 ng/ml

Instrument :
 ECD_D
 ClientSampleId :



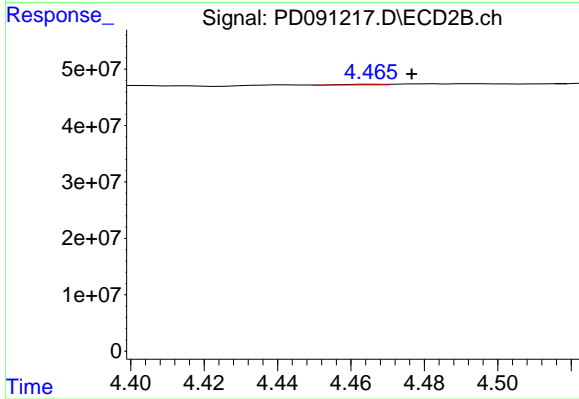
#23 Chlordane-1

R.T.: 3.881 min
 Delta R.T.: -0.015 min
 Response: 423721
 Conc: 0.25 ng/ml



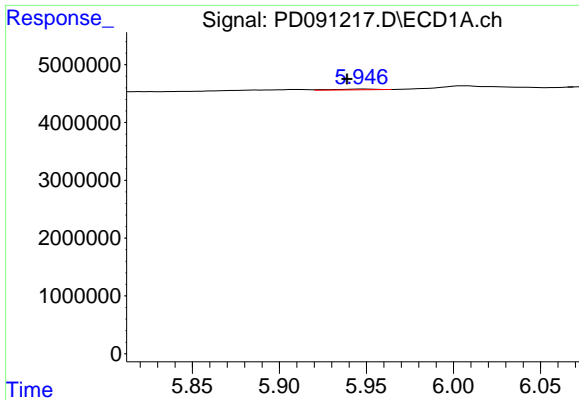
#24 Chlordane-2

R.T.: 5.217 min
 Delta R.T.: -0.017 min
 Response: 174018
 Conc: 0.70 ng/ml



#24 Chlordane-2

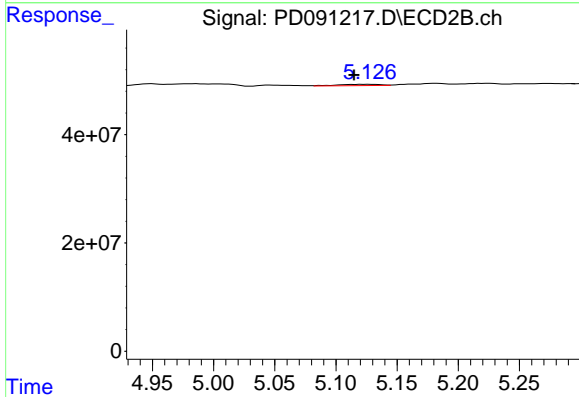
R.T.: 4.466 min
 Delta R.T.: -0.010 min
 Response: 870100
 Conc: 0.50 ng/ml



#25 Chlordane-3

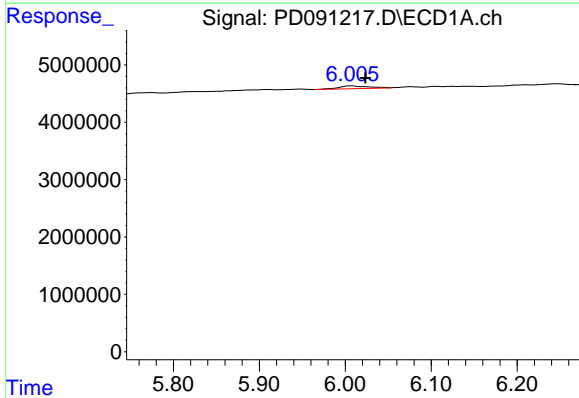
R.T.: 5.948 min
 Delta R.T.: 0.009 min
 Response: 228942
 Conc: 0.24 ng/ml

Instrument :
 ECD_D
 ClientSampleId :



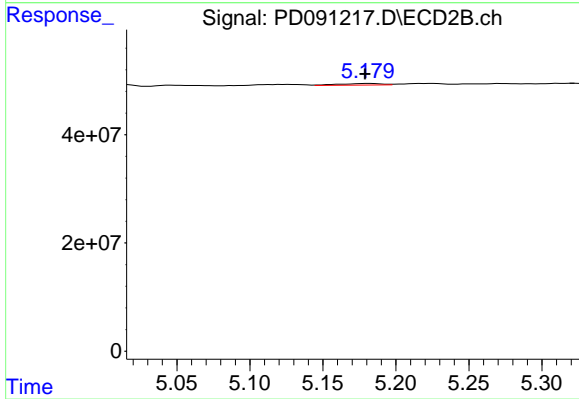
#25 Chlordane-3

R.T.: 5.120 min
 Delta R.T.: 0.005 min
 Response: 6023519
 Conc: 1.05 ng/ml



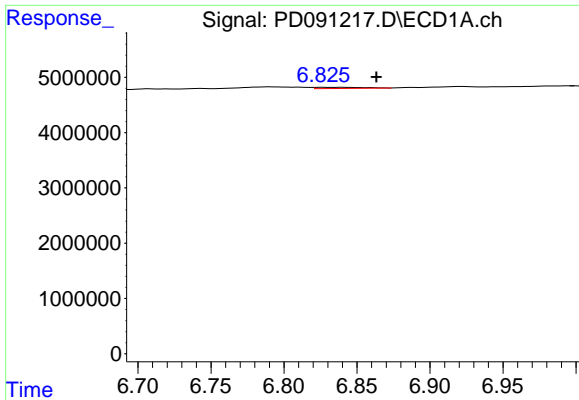
#26 Chlordane-4

R.T.: 6.007 min
 Delta R.T.: -0.017 min
 Response: 1214576
 Conc: 1.01 ng/ml



#26 Chlordane-4

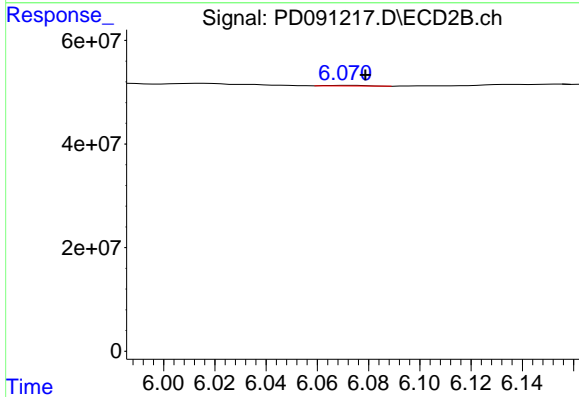
R.T.: 5.180 min
 Delta R.T.: 0.002 min
 Response: 5995694
 Conc: 1.25 ng/ml



#27 Chlordane-5

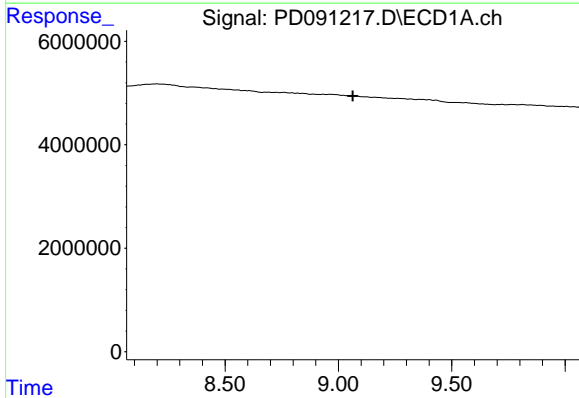
R.T.: 6.840 min
 Delta R.T.: -0.024 min
 Response: 478536
 Conc: 2.42 ng/ml

Instrument :
 ECD_D
 ClientSampleId :



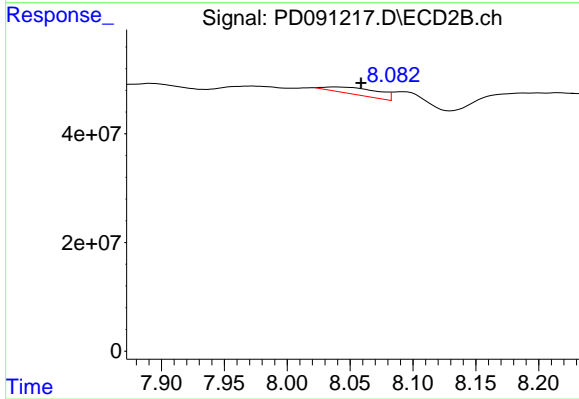
#27 Chlordane-5

R.T.: 6.072 min
 Delta R.T.: -0.007 min
 Response: 1185752
 Conc: 0.58 ng/ml



#28 Decachlorobiphenyl

R.T.: 0.000 min
 Exp R.T. : 9.063 min
 Response: 0
 Conc: N.D.



#28 Decachlorobiphenyl

R.T.: 8.039 min
 Delta R.T.: -0.020 min
 Response: 36331086
 Conc: 0.92 ng/ml