

Data Path : Z:\pestpcbsrv\HPCHEM1\ECD_D\Data\PD111725\
 Data File : PD091218.D
 Signal(s) : Signal #1: ECD1A.ch Signal #2: ECD2B.ch
 Acq On : 17 Nov 2025 09:51
 Operator : AR\AJ
 Sample : I.BLK
 Misc :
 ALS Vial : 2 Sample Multiplier: 1

Instrument :
 ECD_D
 ClientSampleId :

Integration File signal 1: autoint1.e
 Integration File signal 2: autoint2.e
 Quant Time: Nov 18 01:07:39 2025
 Quant Method : Z:\pestpcbsrv\HPCHEM1\ECD_D\Method\PD111525.M
 Quant Title : GC Extractables
 QLast Update : Sat Nov 15 04:46:13 2025
 Response via : Initial Calibration
 Integrator: ChemStation

Volume Inj. : 1 µl
 Signal #1 Phase : ZB-MR2 Signal #2 Phase: ZB-MR2
 Signal #1 Info : 30M x 0.32mm x0.5 Signal #2 Info : 30M x 0.32mm x 0.25µm

Compound	RT#1	RT#2	Resp#1	Resp#2	ng/ml	ng/ml

System Monitoring Compounds						
1) SA Tetrachlo...	3.548	2.873	67500173	827.2E6	19.573	22.584
28) SA Decachlor...	9.071	8.061	99597433	763.2E6	19.992	19.286
Target Compounds						
2) A alpha-BHC	3.998	3.376	138163	3319341	0.017	0.053 #
4) MA Heptachlor	4.918	4.064	726707	2425914	0.101	0.044 #
5) MB Aldrin	5.265	4.377f	245986	1876375	0.034	0.033
6) B beta-BHC	4.518	4.029	415958	2972338	0.143	0.124
7) B delta-BHC	4.776f	4.255	5733884	3702653	0.772	0.063 #
8) B Heptachlo...	0.000	4.887f	0	7265861	N.D.	0.143 #
9) A Endosulfan I	6.069	5.231	238798	874453	0.039	0.018 #
10) B gamma-Chl...	5.943	5.116	140772	7078013	0.022	0.130 #
11) B alpha-Chl...	6.000f	5.181	2136962	4089844	0.310	0.078 #
12) B 4,4'-DDE	6.203	5.365	111429	1616250	0.019	0.030 #
13) MA Dieldrin	6.359f	5.497	-4474	1153618	N.D.	0.021
14) MA Endrin	0.000	5.781	0	17997791	N.D.	0.398 #
15) B Endosulfa...	6.752f	6.083	221693	4871618	0.040	0.104 #
16) A 4,4'-DDD	6.701	5.911	292500	696271	0.060	0.014 #
17) MA 4,4'-DDT	7.013	6.196f	155917	4130348	0.038	0.106 #
18) B Endrin al...	6.917	6.250	350979	11595786	0.084	0.329 #
19) B Endosulfa...	7.150	6.474	268159	3325062	0.052	0.074 #
20) A Methoxychlor	7.499	6.737	614773	1819180	0.283	0.091 #
21) B Endrin ke...	7.624	6.990	1347962	1933300	0.239	0.038 #
22) Mirex	8.112	7.174	1761695	21700186	0.495	0.655 #
23) Chlordane-1	0.000	3.904	0	346266	N.D.	0.201 #
24) Chlordane-2	0.000	4.477	0	1640492	N.D.	0.937 #
25) Chlordane-3	5.943	5.116	140772	7078013	0.146	1.230 #
26) Chlordane-4	6.000f	5.181	2136962	4089844	1.779	0.855 #
27) Chlordane-5	6.870	6.083	102917	4871618	0.521	2.401 #

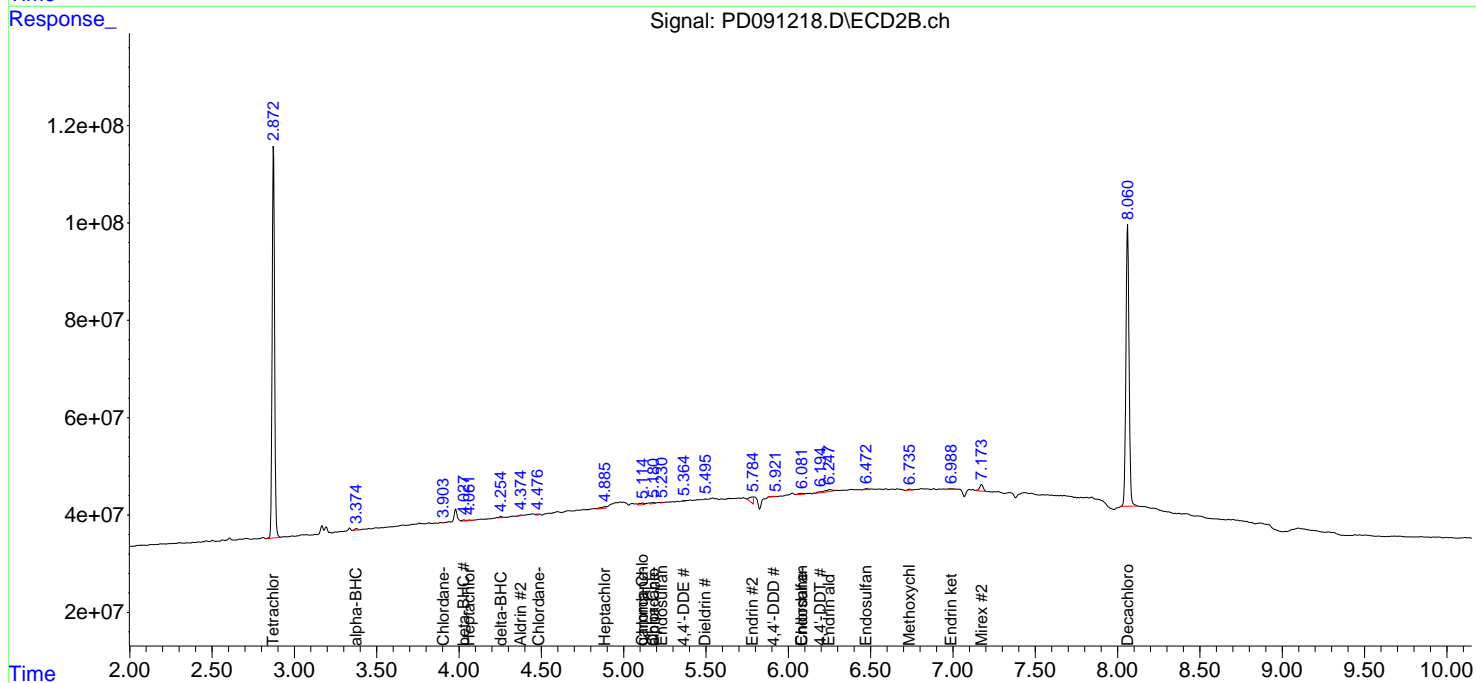
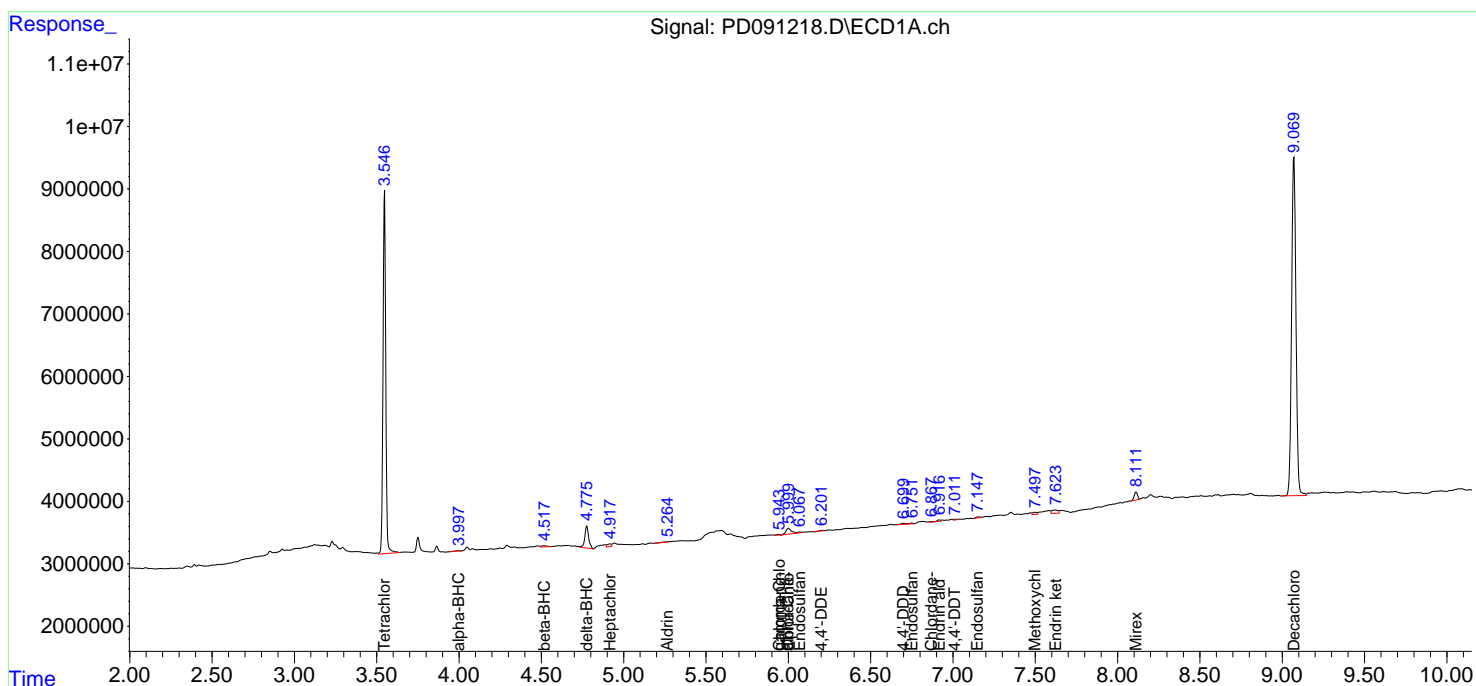
(f)=RT Delta > 1/2 Window (#)=Amounts differ by > 25% (m)=manual int.

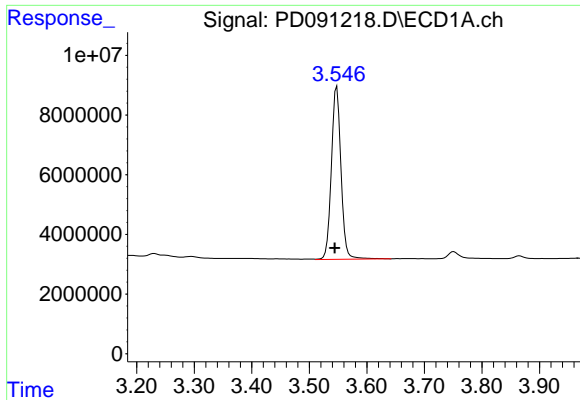
Data Path : Z:\pestpcbsrv\HPCHEM1\ECD_D\Data\PD111725\
 Data File : PD091218.D
 Signal(s) : Signal #1: ECD1A.ch Signal #2: ECD2B.ch
 Acq On : 17 Nov 2025 09:51
 Operator : AR\AJ
 Sample : I.BLK
 Misc :
 ALS Vial : 2 Sample Multiplier: 1

Instrument :
 ECD_D
 ClientSampleId :

Integration File signal 1: autoint1.e
 Integration File signal 2: autoint2.e
 Quant Time: Nov 18 01:07:39 2025
 Quant Method : Z:\pestpcbsrv\HPCHEM1\ECD_D\Method\PD111525.M
 Quant Title : GC Extractables
 QLast Update : Sat Nov 15 04:46:13 2025
 Response via : Initial Calibration
 Integrator: ChemStation

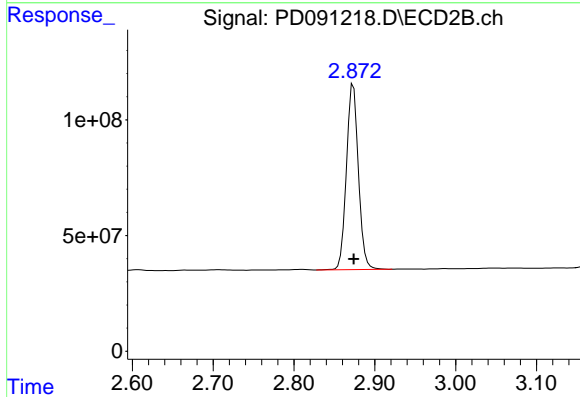
Volume Inj. : 1 µl
 Signal #1 Phase : ZB-MR1 Signal #2 Phase: ZB-MR2
 Signal #1 Info : 30M x 0.32mm x0.5 Signal #2 Info : 30M x 0.32mm x 0.25µm



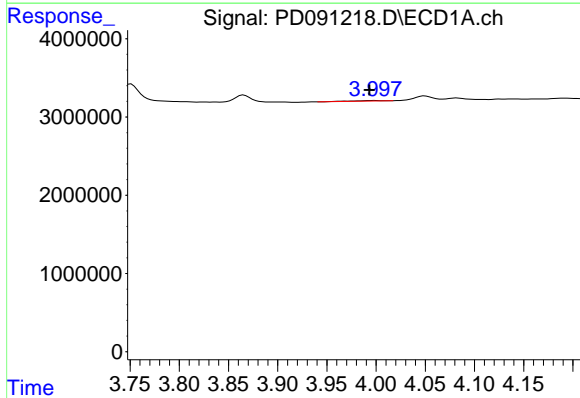


#1 Tetrachloro-m-xylene
 R.T.: 3.548 min
 Delta R.T.: 0.004 min
 Response: 67500173
 Conc: 19.57 ng/ml

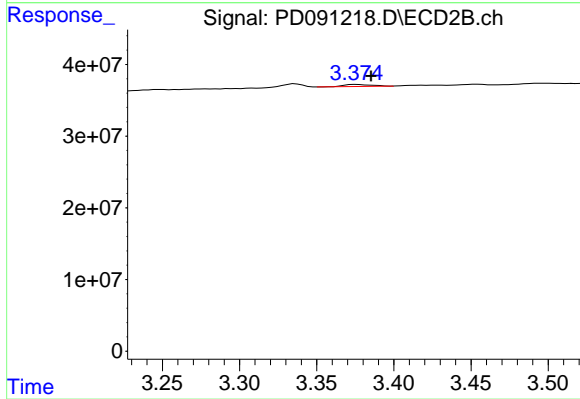
Instrument :
 ECD_D
 ClientSampleId :



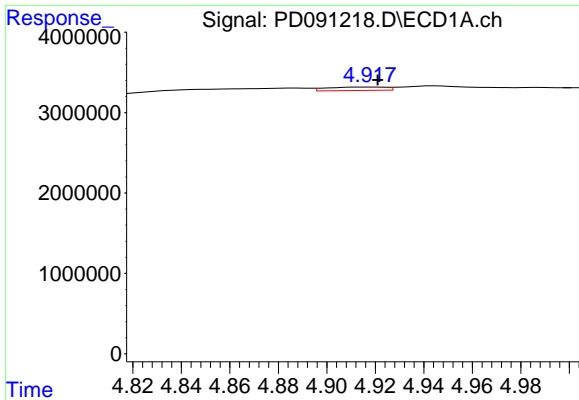
#1 Tetrachloro-m-xylene
 R.T.: 2.873 min
 Delta R.T.: 0.000 min
 Response: 827248235
 Conc: 22.58 ng/ml



#2 alpha-BHC
 R.T.: 3.998 min
 Delta R.T.: 0.005 min
 Response: 138163
 Conc: 0.02 ng/ml



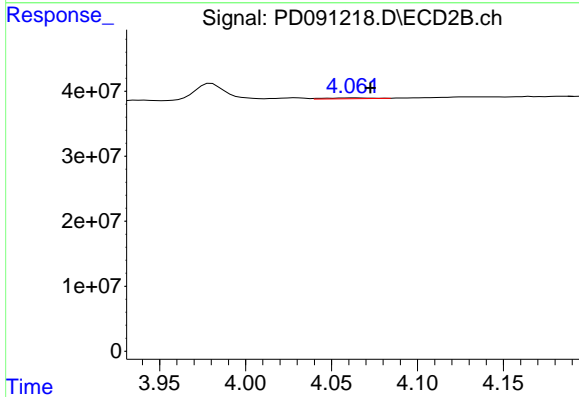
#2 alpha-BHC
 R.T.: 3.376 min
 Delta R.T.: -0.009 min
 Response: 3319341
 Conc: 0.05 ng/ml



#4 Heptachlor

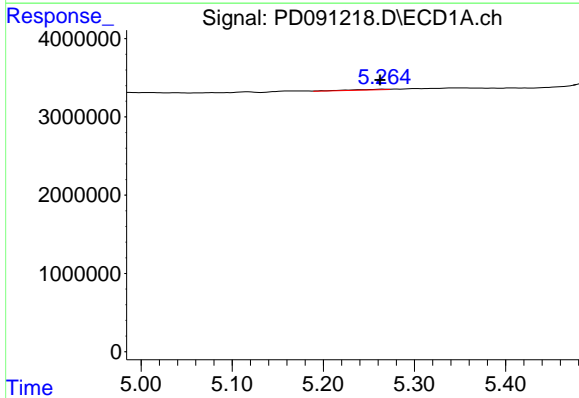
R.T.: 4.918 min
 Delta R.T.: -0.003 min
 Response: 726707
 Conc: 0.10 ng/ml

Instrument :
 ECD_D
 ClientSampleId :



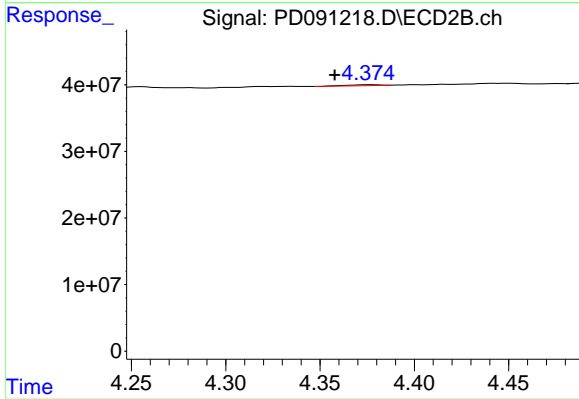
#4 Heptachlor

R.T.: 4.064 min
 Delta R.T.: -0.009 min
 Response: 2425914
 Conc: 0.04 ng/ml



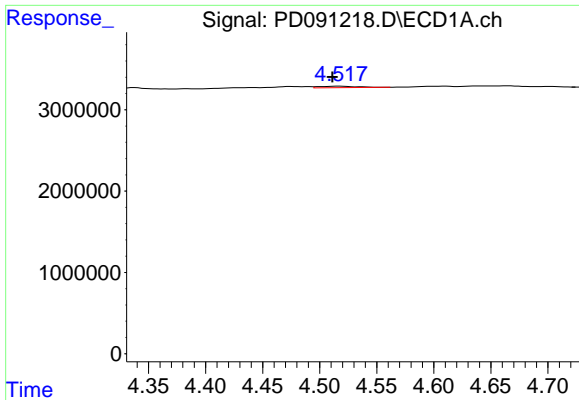
#5 Aldrin

R.T.: 5.265 min
 Delta R.T.: 0.003 min
 Response: 245986
 Conc: 0.03 ng/ml



#5 Aldrin

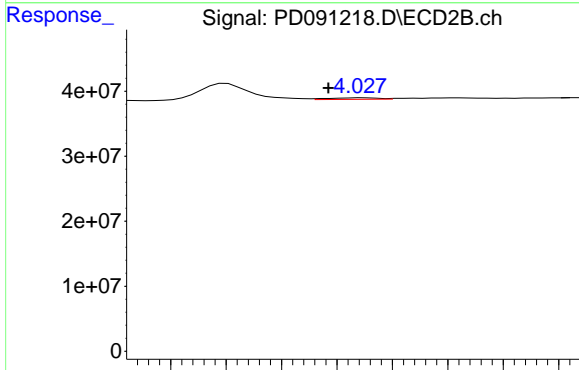
R.T.: 4.377 min
 Delta R.T.: 0.019 min
 Response: 1876375
 Conc: 0.03 ng/ml



#6 beta-BHC

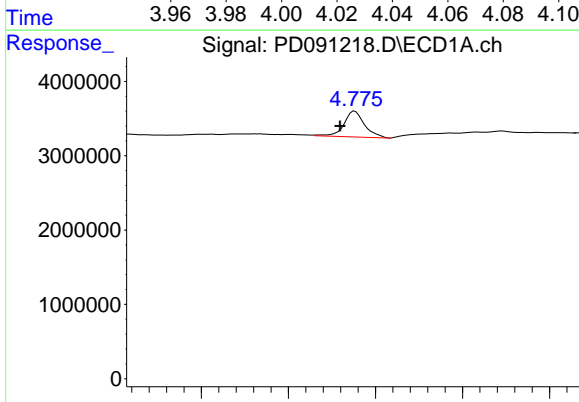
R.T.: 4.518 min
 Delta R.T.: 0.007 min
 Response: 415958
 Conc: 0.14 ng/ml

Instrument :
 ECD_D
 ClientSampleId :



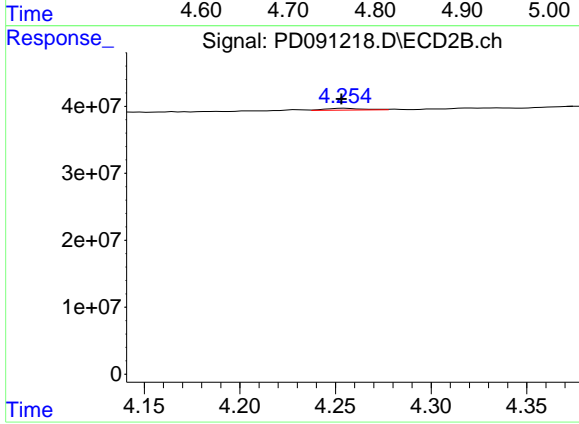
#6 beta-BHC

R.T.: 4.029 min
 Delta R.T.: 0.012 min
 Response: 2972338
 Conc: 0.12 ng/ml



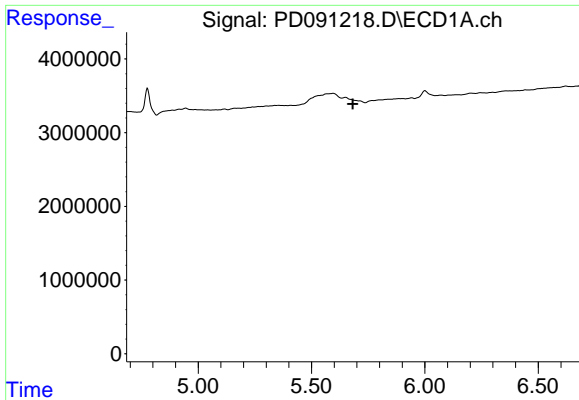
#7 delta-BHC

R.T.: 4.776 min
 Delta R.T.: 0.017 min
 Response: 5733884
 Conc: 0.77 ng/ml



#7 delta-BHC

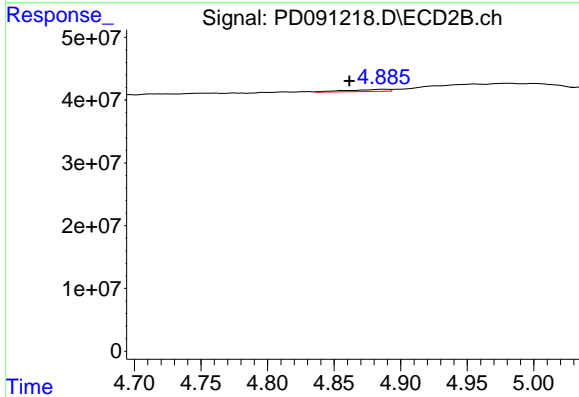
R.T.: 4.255 min
 Delta R.T.: 0.002 min
 Response: 3702653
 Conc: 0.06 ng/ml



#8 Heptachlor epoxide

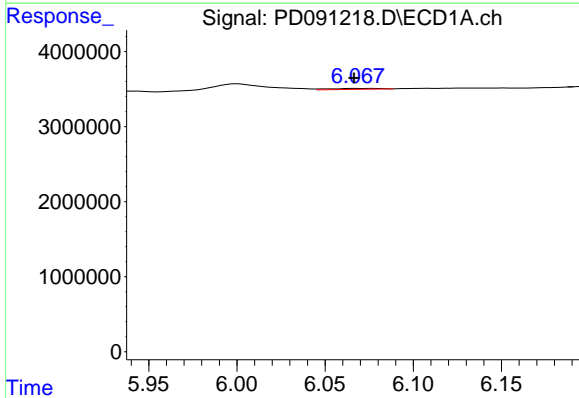
R.T.: 0.000 min
 Exp R.T.: 5.683 min
 Response: 0
 Conc: N.D.

Instrument :
 ECD_D
 ClientSampleId :



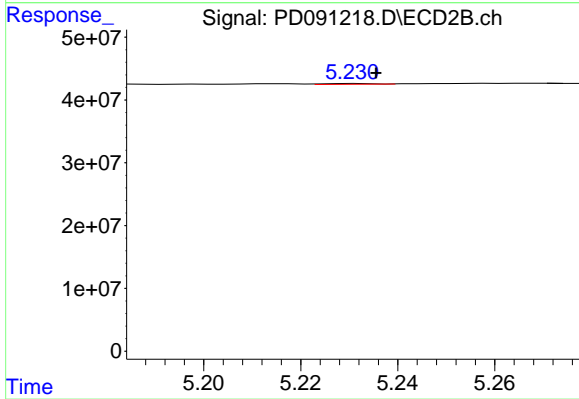
#8 Heptachlor epoxide

R.T.: 4.887 min
 Delta R.T.: 0.026 min
 Response: 7265861
 Conc: 0.14 ng/ml



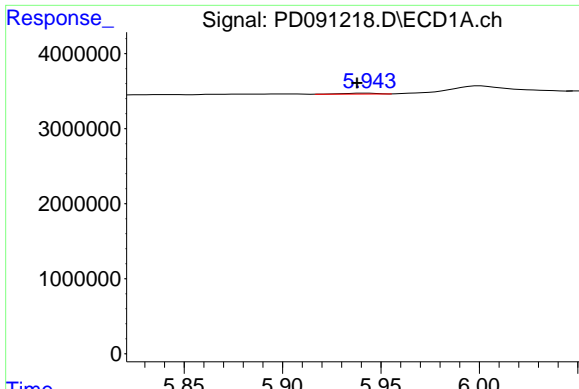
#9 Endosulfan I

R.T.: 6.069 min
 Delta R.T.: 0.002 min
 Response: 238798
 Conc: 0.04 ng/ml



#9 Endosulfan I

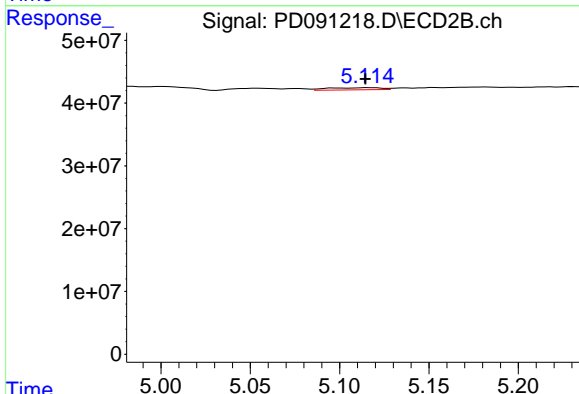
R.T.: 5.231 min
 Delta R.T.: -0.004 min
 Response: 874453
 Conc: 0.02 ng/ml



#10 gamma-Chlordane

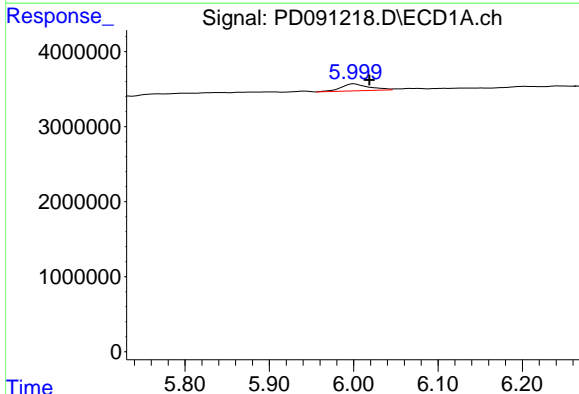
R.T.: 5.943 min
 Delta R.T.: 0.005 min
 Response: 140772
 Conc: 0.02 ng/ml

Instrument :
 ECD_D
 ClientSampleId :



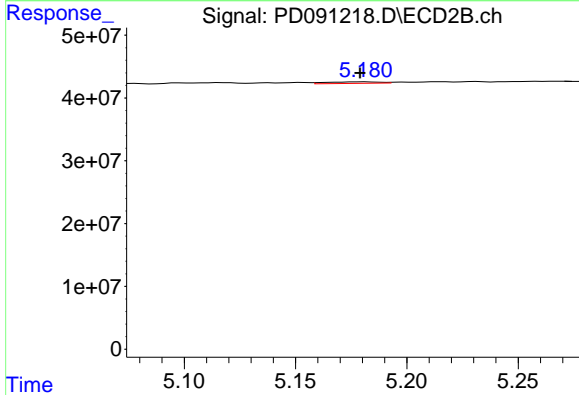
#10 gamma-Chlordane

R.T.: 5.116 min
 Delta R.T.: 0.002 min
 Response: 7078013
 Conc: 0.13 ng/ml



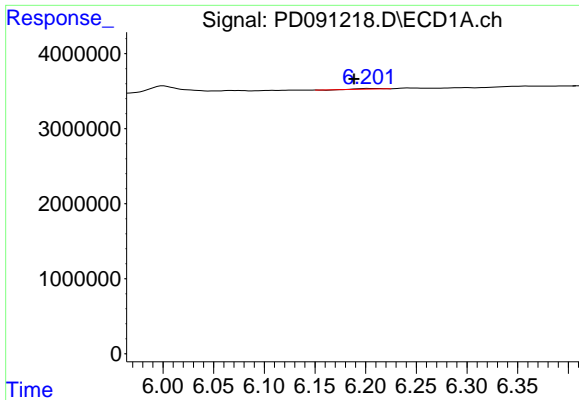
#11 alpha-Chlordane

R.T.: 6.000 min
 Delta R.T.: -0.018 min
 Response: 2136962
 Conc: 0.31 ng/ml



#11 alpha-Chlordane

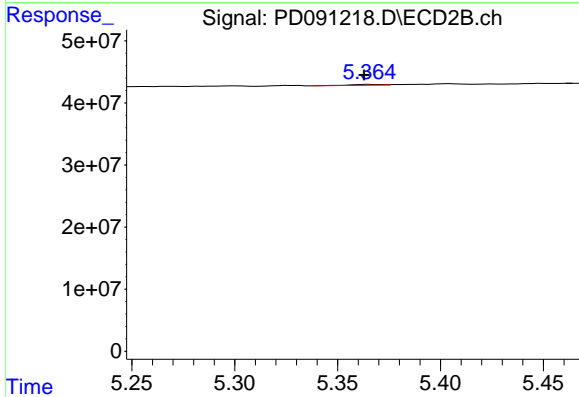
R.T.: 5.181 min
 Delta R.T.: 0.002 min
 Response: 4089844
 Conc: 0.08 ng/ml



#12 4,4'-DDE

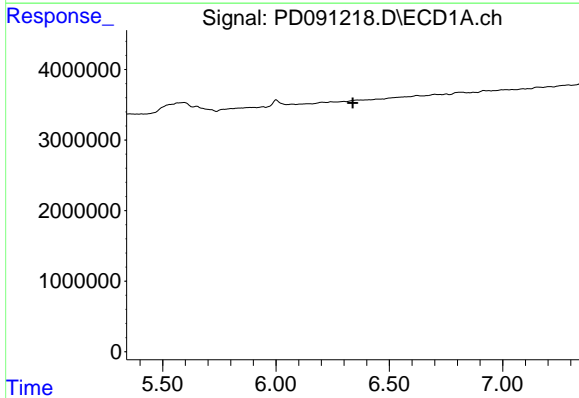
R.T.: 6.203 min
 Delta R.T.: 0.015 min
 Response: 111429
 Conc: 0.02 ng/ml

Instrument :
 ECD_D
 ClientSampleId :



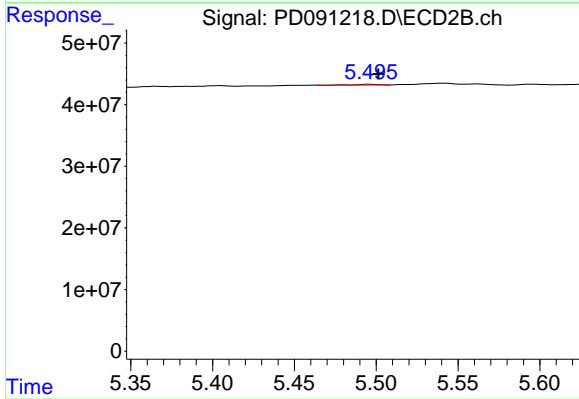
#12 4,4'-DDE

R.T.: 5.365 min
 Delta R.T.: 0.003 min
 Response: 1616250
 Conc: 0.03 ng/ml



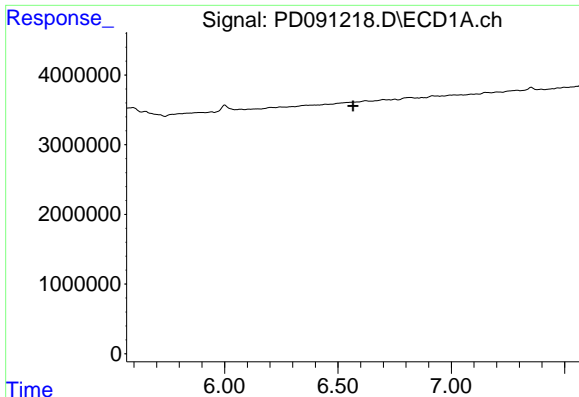
#13 Dieldrin

R.T.: 6.359 min
 Delta R.T.: 0.020 min
 Response: -4474
 Conc: N.D.



#13 Dieldrin

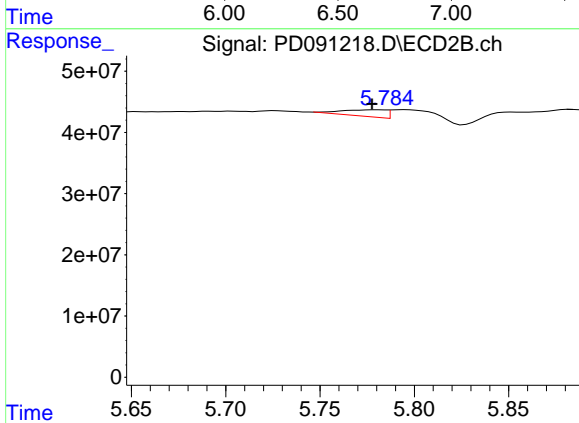
R.T.: 5.497 min
 Delta R.T.: -0.005 min
 Response: 1153618
 Conc: 0.02 ng/ml



#14 Endrin

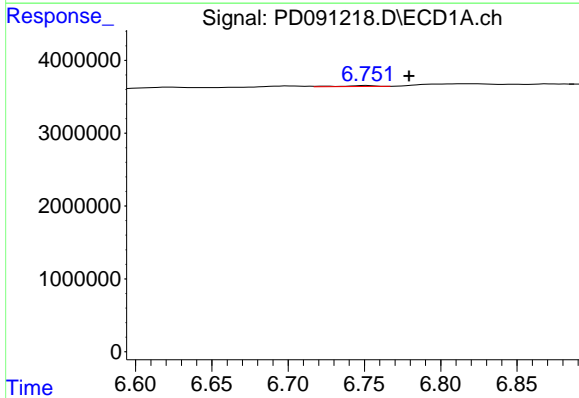
R.T.: 0.000 min
 Exp R.T.: 6.566 min
 Response: 0
 Conc: N.D.

Instrument :
 ECD_D
 ClientSampleId :



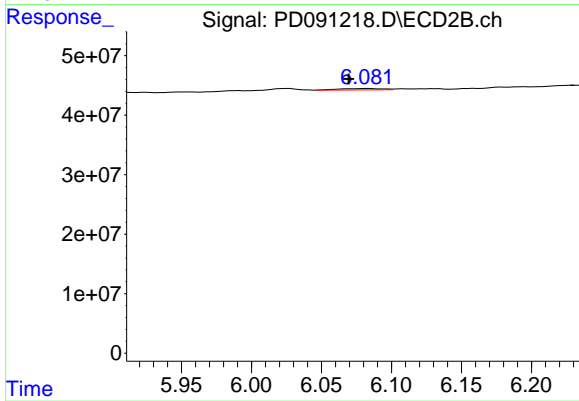
#14 Endrin

R.T.: 5.781 min
 Delta R.T.: 0.003 min
 Response: 17997791
 Conc: 0.40 ng/ml



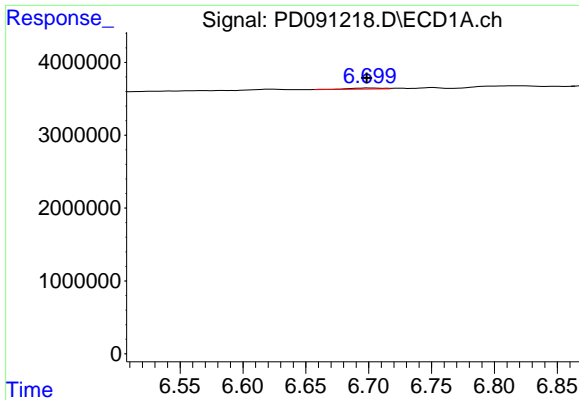
#15 Endosulfan II

R.T.: 6.752 min
 Delta R.T.: -0.027 min
 Response: 221693
 Conc: 0.04 ng/ml



#15 Endosulfan II

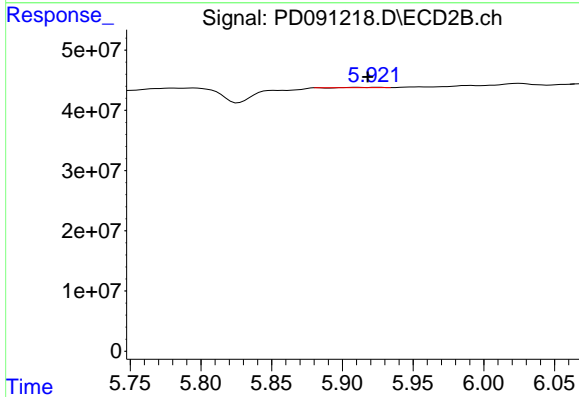
R.T.: 6.083 min
 Delta R.T.: 0.014 min
 Response: 4871618
 Conc: 0.10 ng/ml



#16 4,4'-DDD

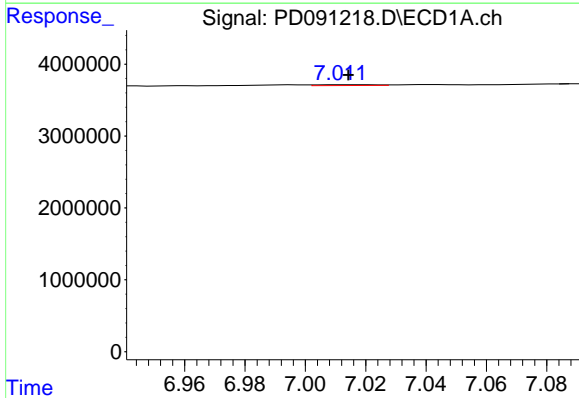
R.T.: 6.701 min
 Delta R.T.: 0.002 min
 Response: 292500
 Conc: 0.06 ng/ml

Instrument :
 ECD_D
 ClientSampleId :



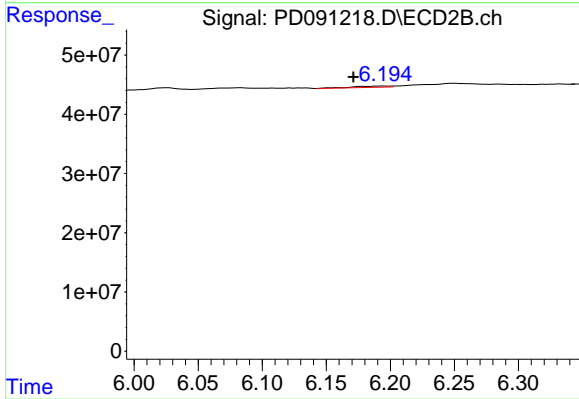
#16 4,4'-DDD

R.T.: 5.911 min
 Delta R.T.: -0.007 min
 Response: 696271
 Conc: 0.01 ng/ml



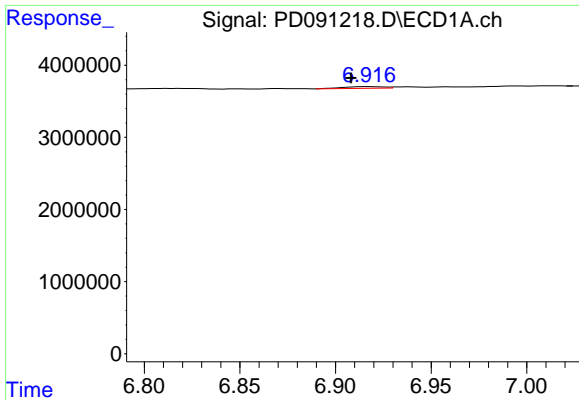
#17 4,4'-DDT

R.T.: 7.013 min
 Delta R.T.: -0.002 min
 Response: 155917
 Conc: 0.04 ng/ml



#17 4,4'-DDT

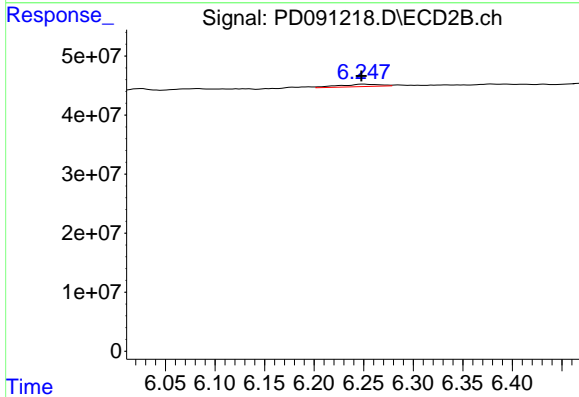
R.T.: 6.196 min
 Delta R.T.: 0.024 min
 Response: 4130348
 Conc: 0.11 ng/ml



#18 Endrin aldehyde

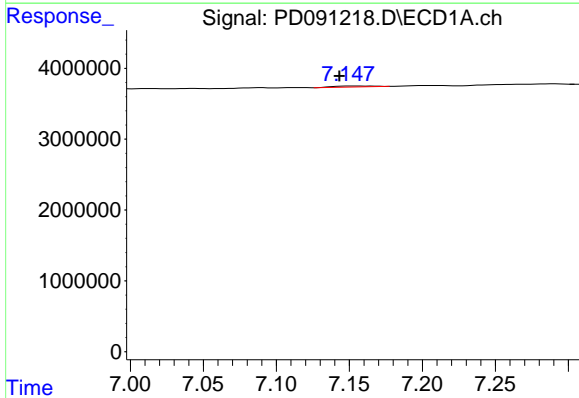
R.T.: 6.917 min
 Delta R.T.: 0.009 min
 Response: 350979
 Conc: 0.08 ng/ml

Instrument :
 ECD_D
 ClientSampleId :



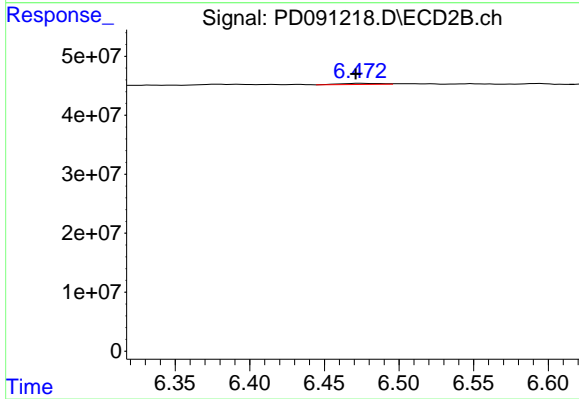
#18 Endrin aldehyde

R.T.: 6.250 min
 Delta R.T.: 0.002 min
 Response: 11595786
 Conc: 0.33 ng/ml



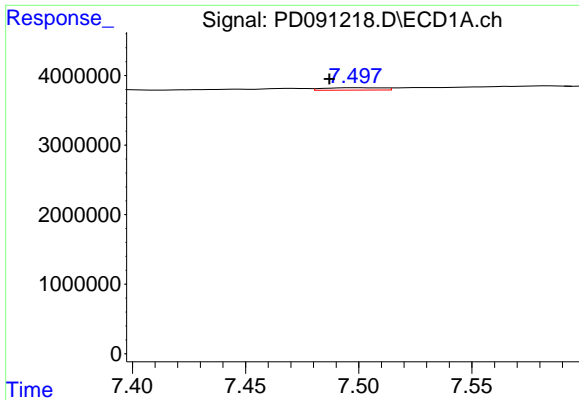
#19 Endosulfan Sulfate

R.T.: 7.150 min
 Delta R.T.: 0.007 min
 Response: 268159
 Conc: 0.05 ng/ml



#19 Endosulfan Sulfate

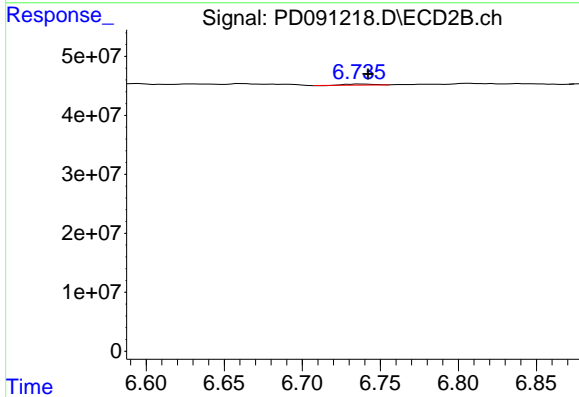
R.T.: 6.474 min
 Delta R.T.: 0.003 min
 Response: 3325062
 Conc: 0.07 ng/ml



#20 Methoxychlor

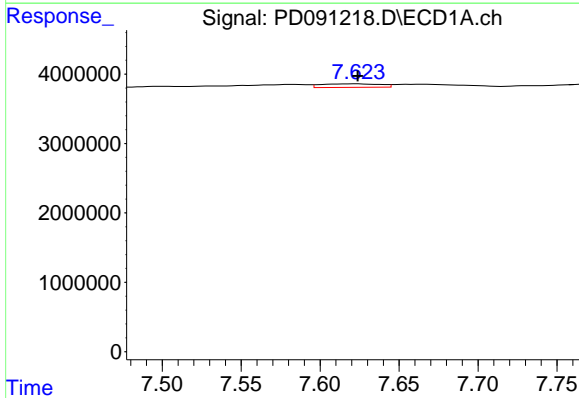
R.T.: 7.499 min
 Delta R.T.: 0.012 min
 Response: 614773
 Conc: 0.28 ng/ml

Instrument :
 ECD_D
 ClientSampleId :



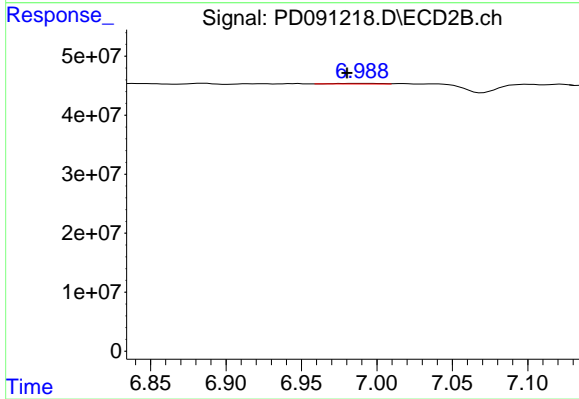
#20 Methoxychlor

R.T.: 6.737 min
 Delta R.T.: -0.006 min
 Response: 1819180
 Conc: 0.09 ng/ml



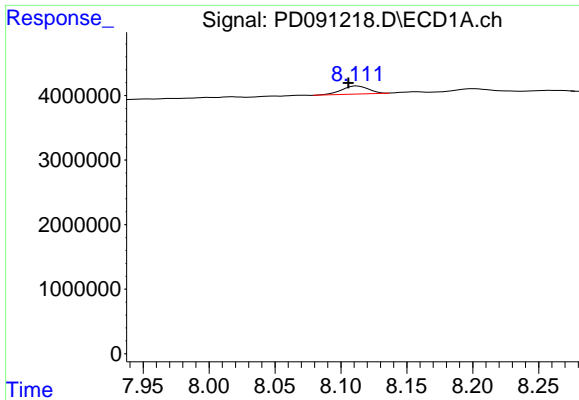
#21 Endrin ketone

R.T.: 7.624 min
 Delta R.T.: 0.000 min
 Response: 1347962
 Conc: 0.24 ng/ml



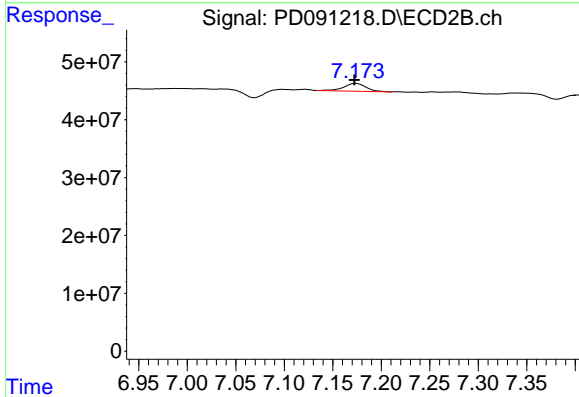
#21 Endrin ketone

R.T.: 6.990 min
 Delta R.T.: 0.010 min
 Response: 1933300
 Conc: 0.04 ng/ml

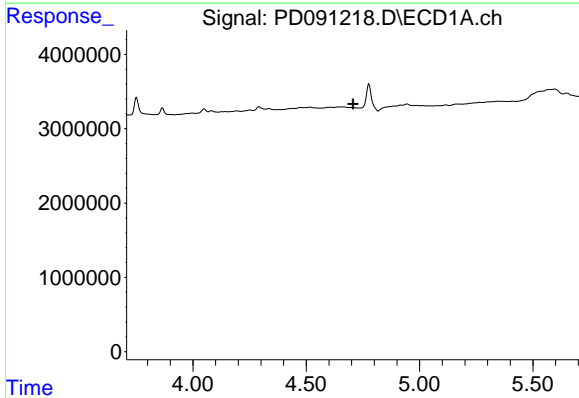


#22 Mirex
 R.T.: 8.112 min
 Delta R.T.: 0.007 min
 Response: 1761695
 Conc: 0.50 ng/ml

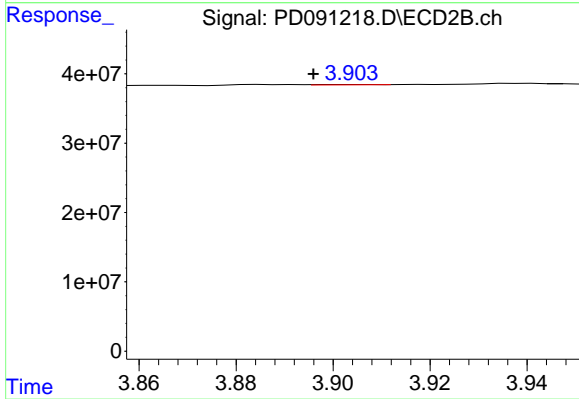
Instrument :
 ECD_D
 ClientSampleId :



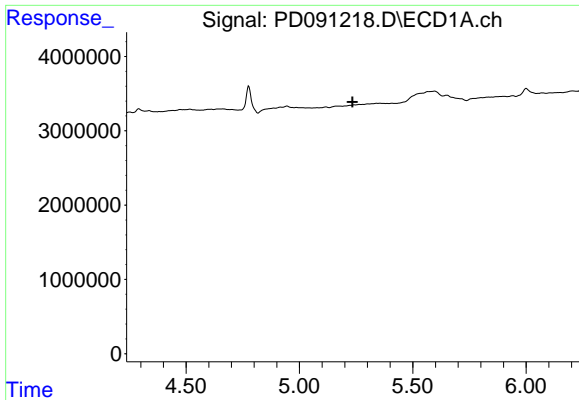
#22 Mirex
 R.T.: 7.174 min
 Delta R.T.: 0.002 min
 Response: 21700186
 Conc: 0.65 ng/ml



#23 Chlordane-1
 R.T.: 0.000 min
 Exp R.T. : 4.707 min
 Response: 0
 Conc: N.D.



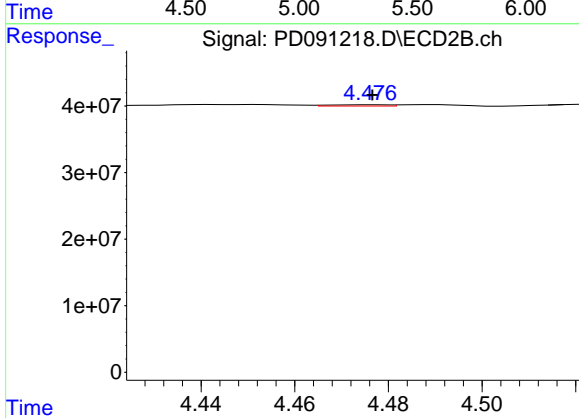
#23 Chlordane-1
 R.T.: 3.904 min
 Delta R.T.: 0.008 min
 Response: 346266
 Conc: 0.20 ng/ml



#24 Chlordane-2

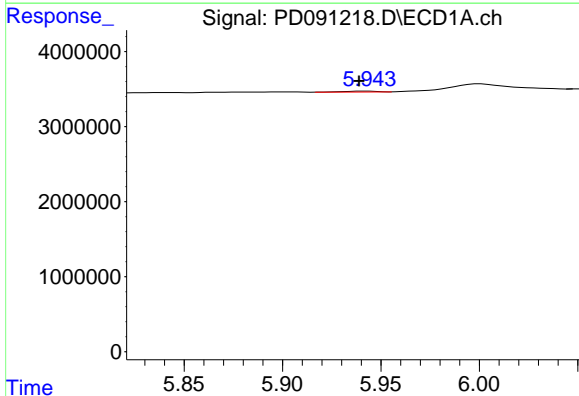
R.T.: 0.000 min
 Exp R.T.: 5.234 min
 Response: 0
 Conc: N.D.

Instrument :
 ECD_D
 ClientSampleId :



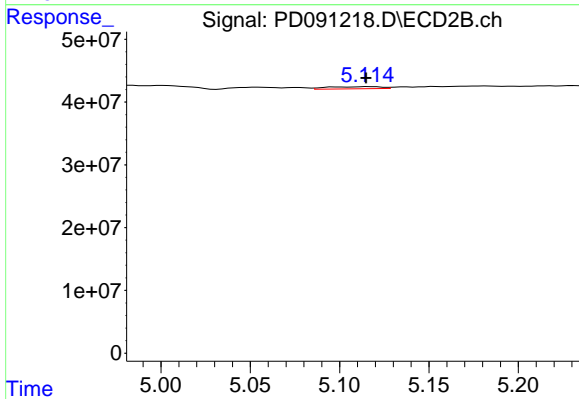
#24 Chlordane-2

R.T.: 4.477 min
 Delta R.T.: 0.000 min
 Response: 1640492
 Conc: 0.94 ng/ml



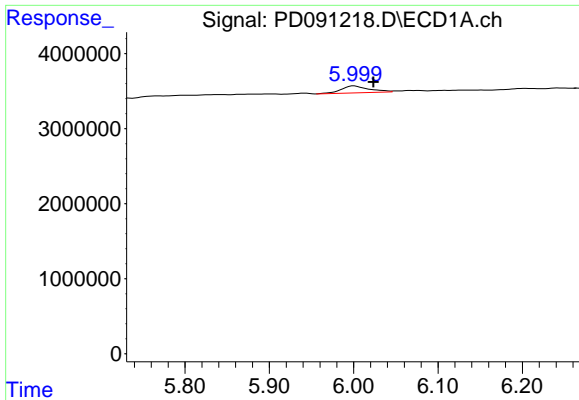
#25 Chlordane-3

R.T.: 5.943 min
 Delta R.T.: 0.004 min
 Response: 140772
 Conc: 0.15 ng/ml



#25 Chlordane-3

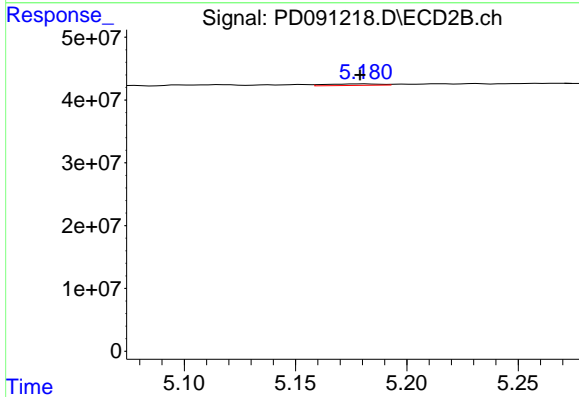
R.T.: 5.116 min
 Delta R.T.: 0.002 min
 Response: 7078013
 Conc: 1.23 ng/ml



#26 Chlordane-4

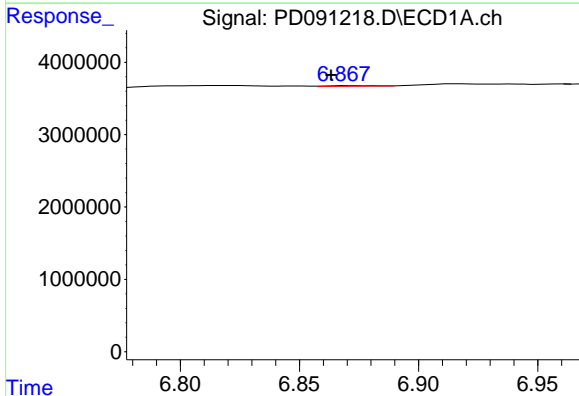
R.T.: 6.000 min
 Delta R.T.: -0.023 min
 Response: 2136962
 Conc: 1.78 ng/ml

Instrument :
 ECD_D
 ClientSampleId :



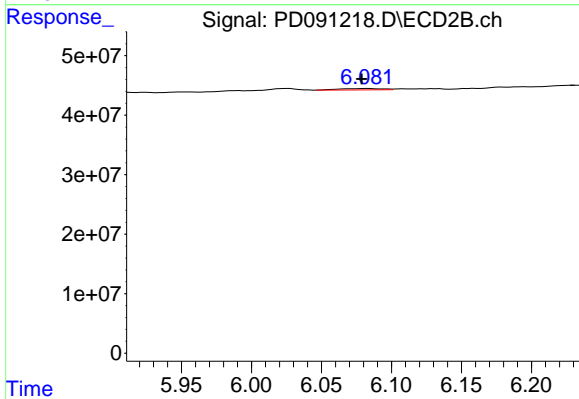
#26 Chlordane-4

R.T.: 5.181 min
 Delta R.T.: 0.002 min
 Response: 4089844
 Conc: 0.85 ng/ml



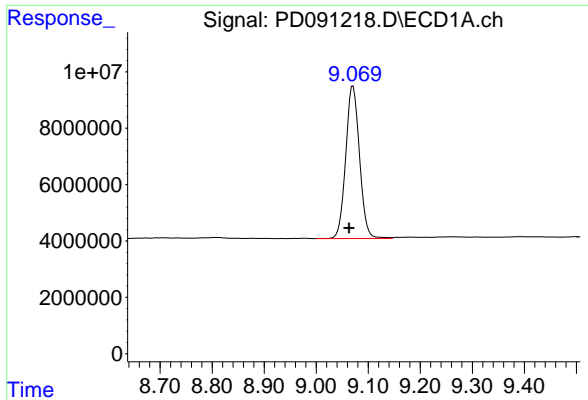
#27 Chlordane-5

R.T.: 6.870 min
 Delta R.T.: 0.007 min
 Response: 102917
 Conc: 0.52 ng/ml



#27 Chlordane-5

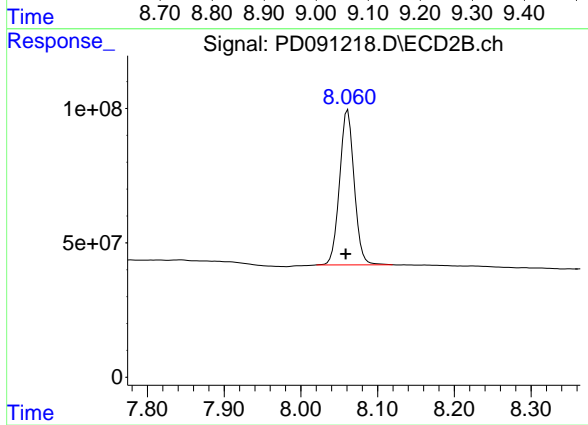
R.T.: 6.083 min
 Delta R.T.: 0.004 min
 Response: 4871618
 Conc: 2.40 ng/ml



#28 Decachlorobiphenyl

R.T.: 9.071 min
Delta R.T.: 0.007 min
Response: 99597433
Conc: 19.99 ng/ml

Instrument :
ECD_D
ClientSampleId :



#28 Decachlorobiphenyl

R.T.: 8.061 min
Delta R.T.: 0.003 min
Response: 763248619
Conc: 19.29 ng/ml