

Data Path : Z:\pestpcbsrv\HPCHEM1\ECD\_D\Data\PD111725\  
 Data File : PD091220.D  
 Signal(s) : Signal #1: ECD1A.ch Signal #2: ECD2B.ch  
 Acq On : 17 Nov 2025 10:18  
 Operator : AR\AJ  
 Sample : PSTDCCC050  
 Misc :  
 ALS Vial : 4 Sample Multiplier: 1

Instrument :  
 ECD\_D  
 ClientSampleId :

Integration File signal 1: autoint1.e  
 Integration File signal 2: autoint2.e  
 Quant Time: Nov 18 01:08:05 2025  
 Quant Method : Z:\pestpcbsrv\HPCHEM1\ECD\_D\Method\PD111525.M  
 Quant Title : GC Extractables  
 QLast Update : Sat Nov 15 04:46:13 2025  
 Response via : Initial Calibration  
 Integrator: ChemStation

Volume Inj. : 1 µl  
 Signal #1 Phase : ZB-MR2 Signal #2 Phase: ZB-MR2  
 Signal #1 Info : 30M x 0.32mm x0.5 Signal #2 Info : 30M x 0.32mm x 0.25µm

Compound	RT#1	RT#2	Resp#1	Resp#2	ng/ml	ng/ml
-----						
System Monitoring Compounds						
1) SA Tetrachlo...	3.544	2.873	165.5E6	1898.3E6	47.999	51.823
28) SA Decachlor...	9.065	8.059	228.8E6	1927.4E6	45.917	48.702
Target Compounds						
2) A alpha-BHC	3.993	3.385	398.7E6	3308.5E6	49.860	52.348
3) MA gamma-BHC...	4.324	3.721	370.7E6	3023.0E6	49.608	52.282
4) MA Heptachlor	4.922	4.073	350.5E6	2841.7E6	48.938	51.471
5) MB Aldrin	5.263	4.358	349.2E6	2946.0E6	48.119	52.180
6) B beta-BHC	4.511	4.017	138.1E6	1239.7E6	47.527	51.595
7) B delta-BHC	4.760	4.254	366.7E6	3022.3E6	49.343	51.684
8) B Heptachlo...	5.684	4.862	309.4E6	2623.9E6	47.620	51.491
9) A Endosulfan I	6.067	5.236	289.7E6	2451.5E6	47.154	51.230
10) B gamma-Chl...	5.939	5.115	310.1E6	2843.8E6	47.706	52.057
11) B alpha-Chl...	6.020	5.179	313.2E6	2706.0E6	45.505	51.709
12) B 4,4'-DDE	6.189	5.363	278.6E6	2735.9E6	48.036	51.194
13) MA Dieldrin	6.340	5.502	308.9E6	2784.6E6	47.782	51.272
14) MA Endrin	6.567	5.779	234.4E6	2265.9E6	47.232	50.139
15) B Endosulfa...	6.781	6.070	257.1E6	2343.2E6	46.249	50.197
16) A 4,4'-DDD	6.700	5.918	230.1E6	2407.4E6	46.858	49.263
17) MA 4,4'-DDT	7.016	6.172	202.0E6	2052.3E6	48.845	52.445
18) B Endrin al...	6.910	6.249	192.9E6	1760.0E6	46.315	49.875
19) B Endosulfa...	7.145	6.472	239.0E6	2241.5E6	46.454	49.995
20) A Methoxychlor	7.488	6.743	102.8E6	983.7E6	47.288	49.061
21) B Endrin ke...	7.626	6.981	267.6E6	2547.5E6	47.505	49.994
22) Mirex	8.108	7.173	165.1E6	1635.1E6	46.416	49.340
23) Chlordane-1	0.000	3.891	0	1399285	N.D.	0.813 #
24) Chlordane-2	5.263f	4.496	349.2E6	14329566	1414.039	8.183 #
25) Chlordane-3	5.939	5.115	310.1E6	2843.8E6	321.426	494.260 #
26) Chlordane-4	6.020	5.179	313.2E6	2706.0E6	260.741	565.691 #
27) Chlordane-5	0.000	6.070	0	2343.2E6	N.D.	1154.738 #

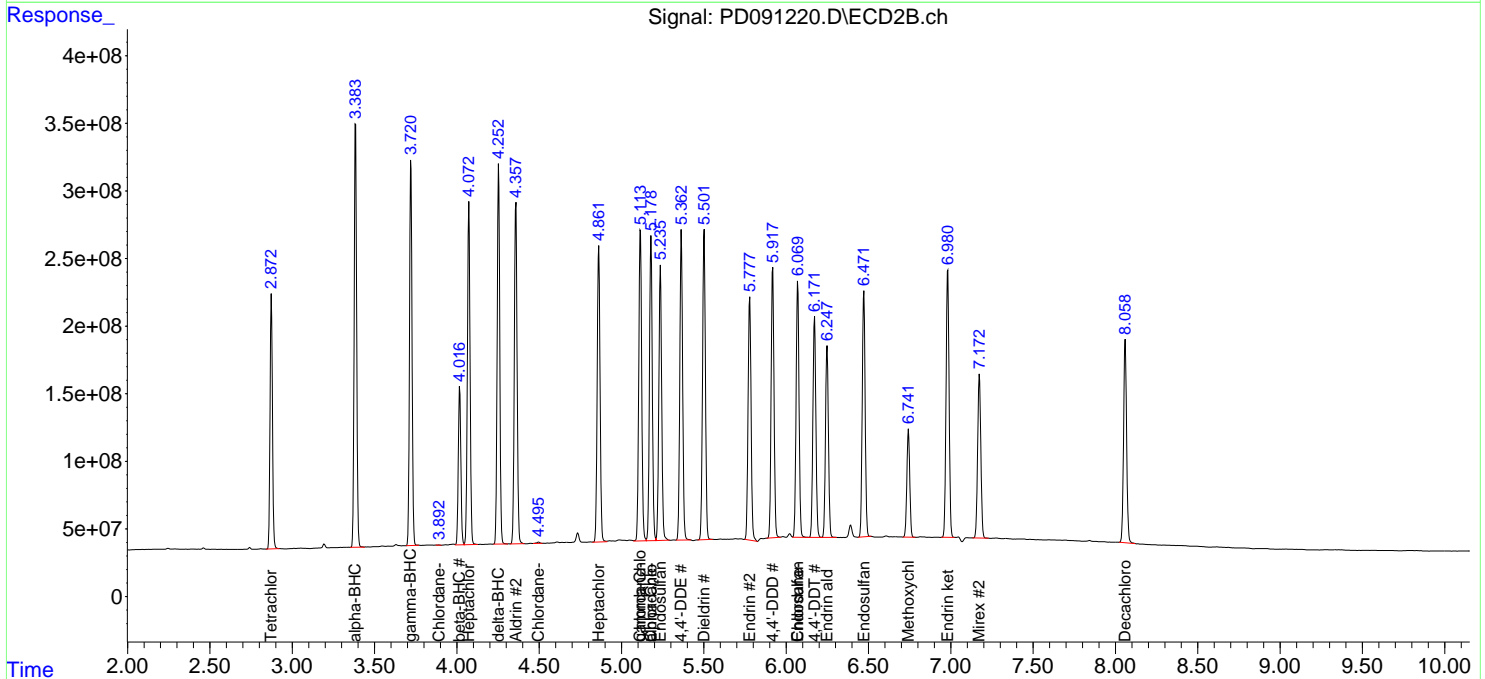
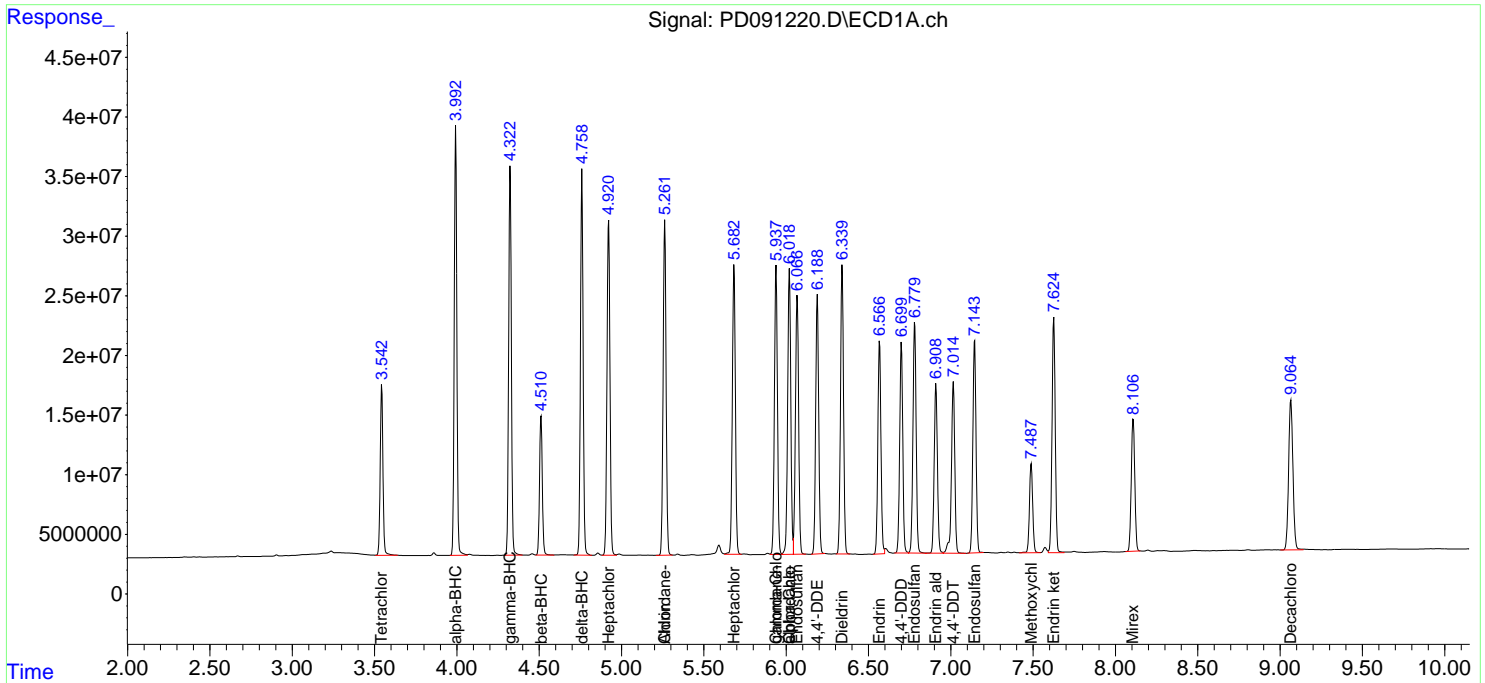
(f)=RT Delta > 1/2 Window (#)=Amounts differ by > 25% (m)=manual int.

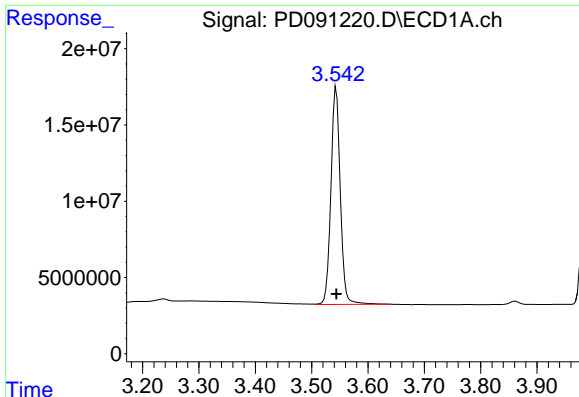
Data Path : Z:\pestpcbsrv\HPCHEM1\ECD\_D\Data\PD111725\  
 Data File : PD091220.D  
 Signal(s) : Signal #1: ECD1A.ch Signal #2: ECD2B.ch  
 Acq On : 17 Nov 2025 10:18  
 Operator : AR\AJ  
 Sample : PSTDCCC050  
 Misc :  
 ALS Vial : 4 Sample Multiplier: 1

Instrument :  
 ECD\_D  
 ClientSampleId :

Integration File signal 1: autoint1.e  
 Integration File signal 2: autoint2.e  
 Quant Time: Nov 18 01:08:05 2025  
 Quant Method : Z:\pestpcbsrv\HPCHEM1\ECD\_D\Method\PD111525.M  
 Quant Title : GC Extractables  
 QLast Update : Sat Nov 15 04:46:13 2025  
 Response via : Initial Calibration  
 Integrator: ChemStation

Volume Inj. : 1 µl  
 Signal #1 Phase : ZB-MR1 Signal #2 Phase: ZB-MR2  
 Signal #1 Info : 30M x 0.32mm x0.5 Signal #2 Info : 30M x 0.32mm x 0.25µm

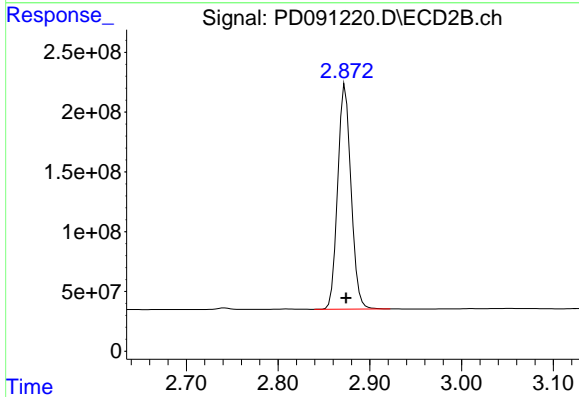




#1 Tetrachloro-m-xylene

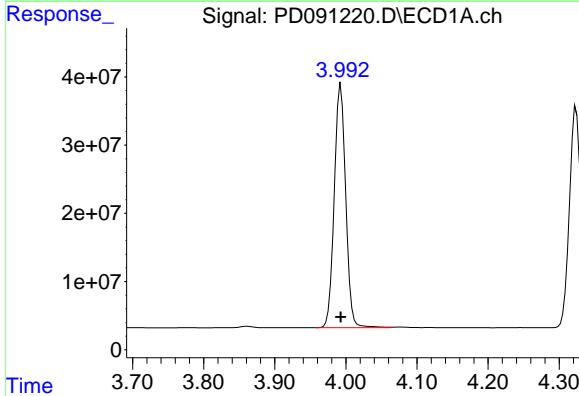
R.T.: 3.544 min  
 Delta R.T.: 0.000 min  
 Response: 165529094  
 Conc: 48.00 ng/ml

Instrument :  
 ECD\_D  
 ClientSampleId :



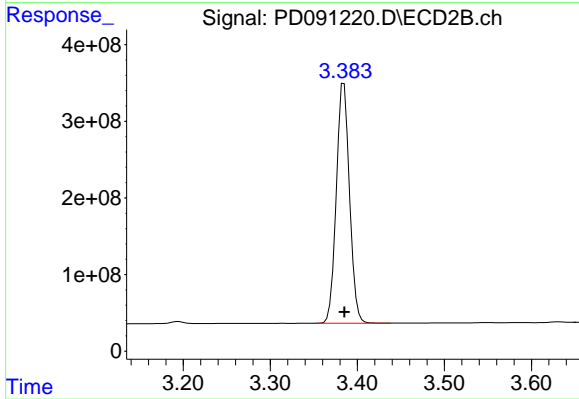
#1 Tetrachloro-m-xylene

R.T.: 2.873 min  
 Delta R.T.: 0.000 min  
 Response: 1898283686  
 Conc: 51.82 ng/ml



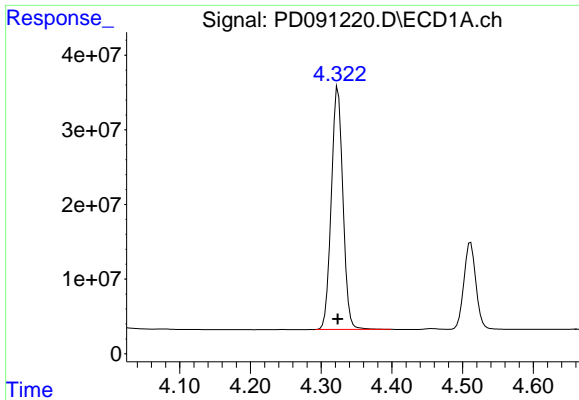
#2 alpha-BHC

R.T.: 3.993 min  
 Delta R.T.: 0.000 min  
 Response: 398660128  
 Conc: 49.86 ng/ml



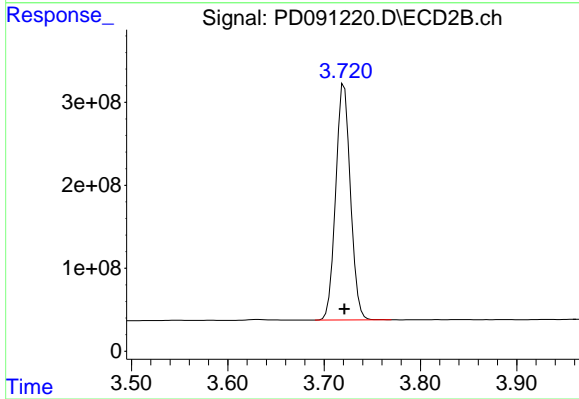
#2 alpha-BHC

R.T.: 3.385 min  
 Delta R.T.: 0.000 min  
 Response: 3308537737  
 Conc: 52.35 ng/ml

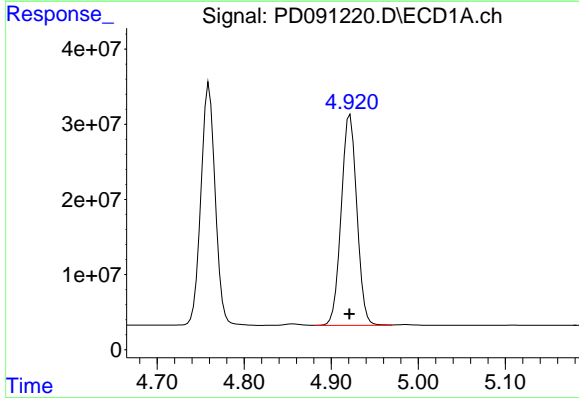


#3 gamma-BHC (Lindane)  
 R.T.: 4.324 min  
 Delta R.T.: 0.000 min  
 Response: 370713116  
 Conc: 49.61 ng/ml

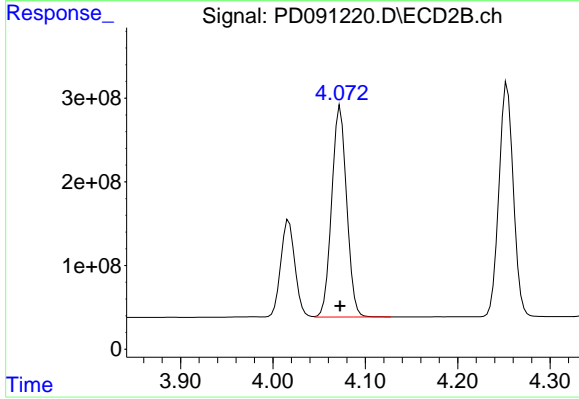
Instrument :  
 ECD\_D  
 ClientSampleId :



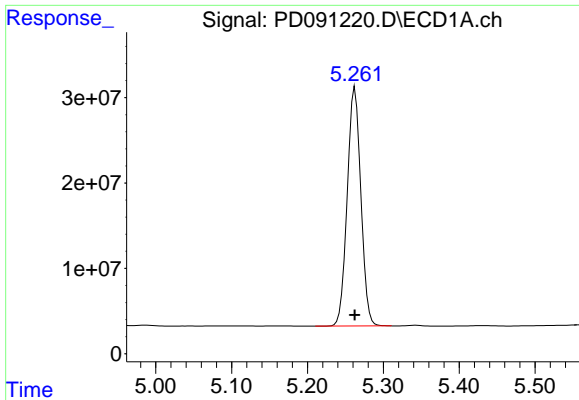
#3 gamma-BHC (Lindane)  
 R.T.: 3.721 min  
 Delta R.T.: 0.000 min  
 Response: 3023032225  
 Conc: 52.28 ng/ml



#4 Heptachlor  
 R.T.: 4.922 min  
 Delta R.T.: 0.000 min  
 Response: 350484409  
 Conc: 48.94 ng/ml



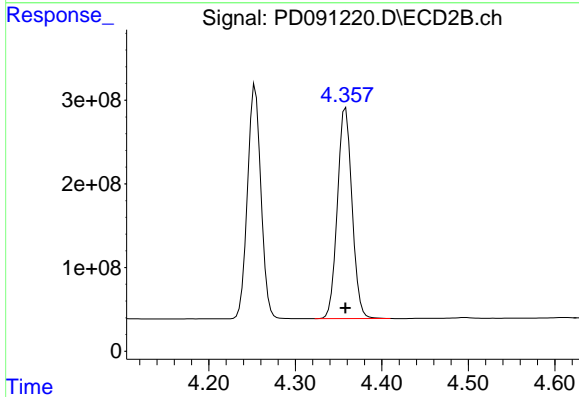
#4 Heptachlor  
 R.T.: 4.073 min  
 Delta R.T.: 0.000 min  
 Response: 2841658141  
 Conc: 51.47 ng/ml



#5 Aldrin

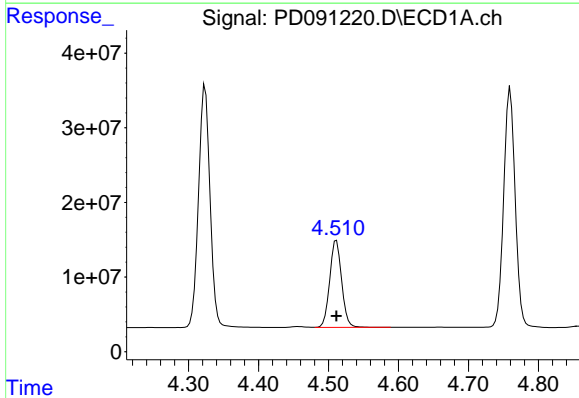
R.T.: 5.263 min  
 Delta R.T.: 0.000 min  
 Response: 349168872  
 Conc: 48.12 ng/ml

Instrument :  
 ECD\_D  
 ClientSampleId :



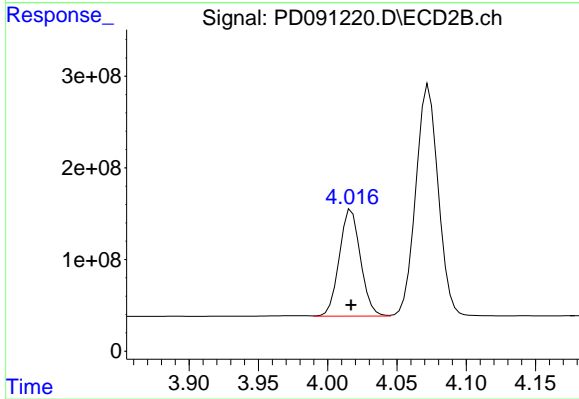
#5 Aldrin

R.T.: 4.358 min  
 Delta R.T.: 0.000 min  
 Response: 2946020350  
 Conc: 52.18 ng/ml



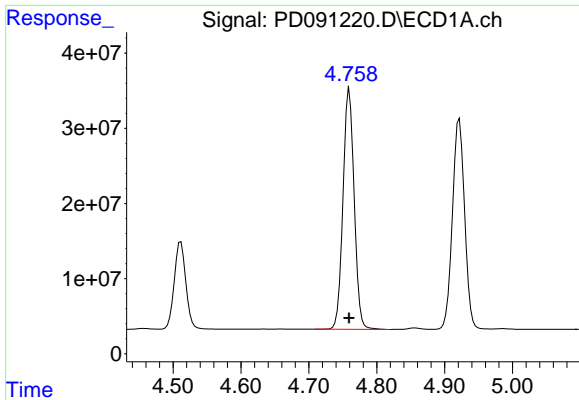
#6 beta-BHC

R.T.: 4.511 min  
 Delta R.T.: 0.000 min  
 Response: 138088372  
 Conc: 47.53 ng/ml



#6 beta-BHC

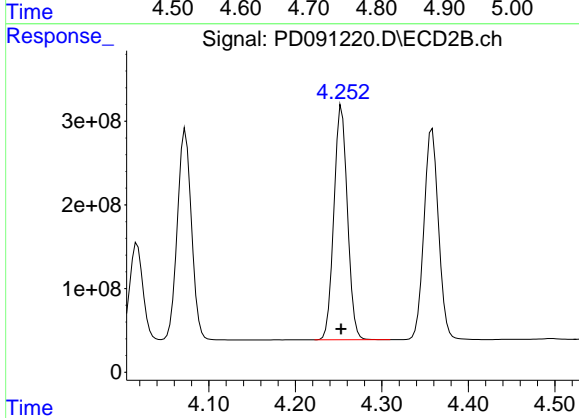
R.T.: 4.017 min  
 Delta R.T.: 0.000 min  
 Response: 1239678753  
 Conc: 51.60 ng/ml



#7 delta-BHC

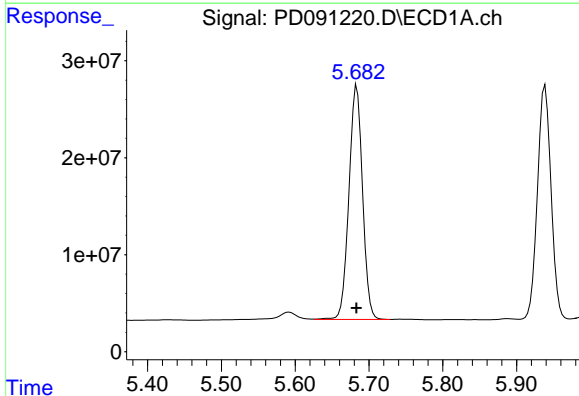
R.T.: 4.760 min  
Delta R.T.: 0.000 min  
Response: 366722523  
Conc: 49.34 ng/ml

Instrument :  
ECD\_D  
ClientSampleId :



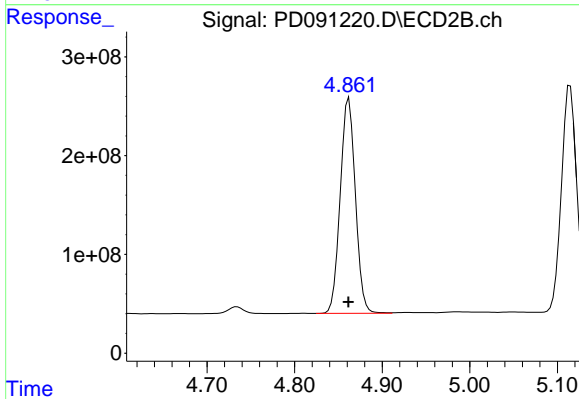
#7 delta-BHC

R.T.: 4.254 min  
Delta R.T.: 0.000 min  
Response: 3022309188  
Conc: 51.68 ng/ml



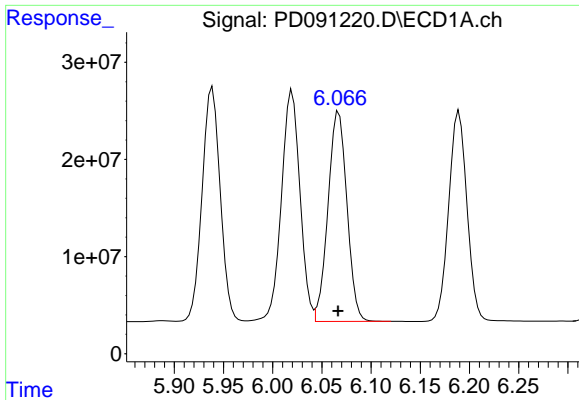
#8 Heptachlor epoxide

R.T.: 5.684 min  
Delta R.T.: 0.000 min  
Response: 309377274  
Conc: 47.62 ng/ml



#8 Heptachlor epoxide

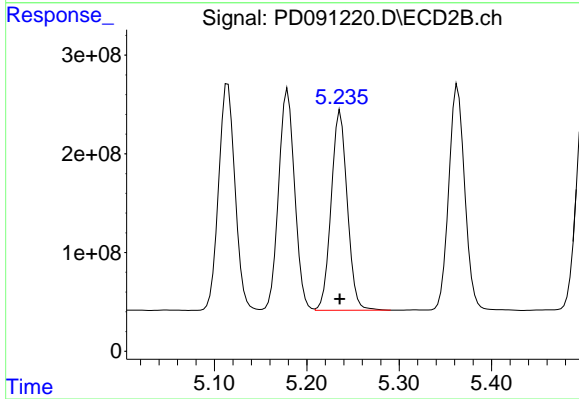
R.T.: 4.862 min  
Delta R.T.: 0.000 min  
Response: 2623918442  
Conc: 51.49 ng/ml



#9 Endosulfan I

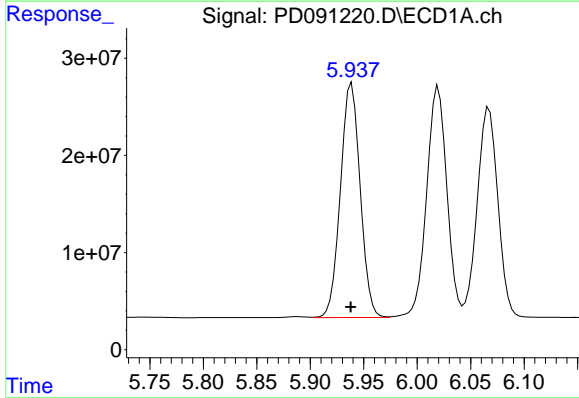
R.T.: 6.067 min  
 Delta R.T.: 0.000 min  
 Response: 289666058  
 Conc: 47.15 ng/ml

Instrument :  
 ECD\_D  
 ClientSampleId :



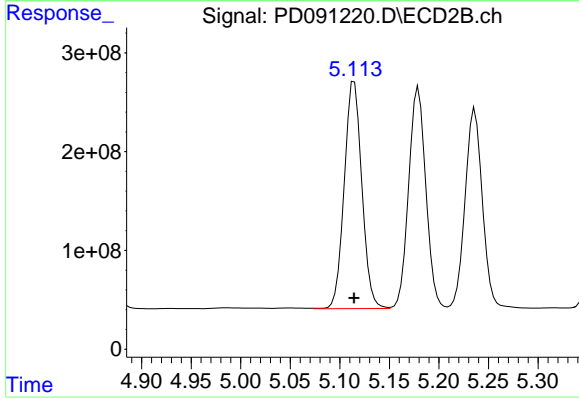
#9 Endosulfan I

R.T.: 5.236 min  
 Delta R.T.: 0.000 min  
 Response: 2451457047  
 Conc: 51.23 ng/ml



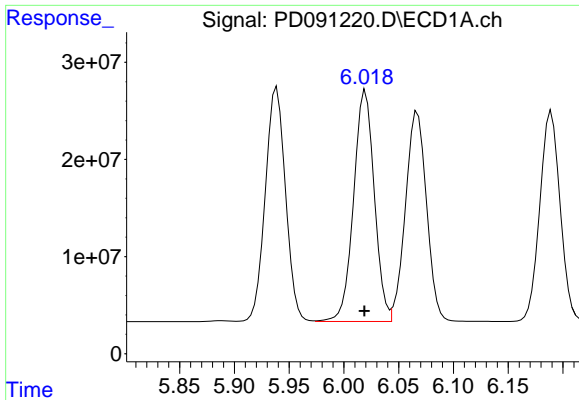
#10 gamma-Chlordane

R.T.: 5.939 min  
 Delta R.T.: 0.000 min  
 Response: 310125965  
 Conc: 47.71 ng/ml



#10 gamma-Chlordane

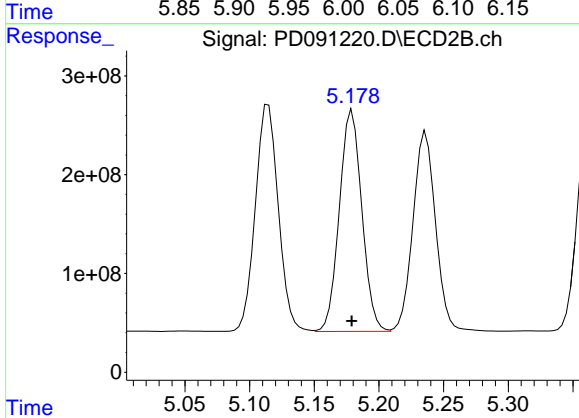
R.T.: 5.115 min  
 Delta R.T.: 0.000 min  
 Response: 2843764305  
 Conc: 52.06 ng/ml



#11 alpha-Chlordane

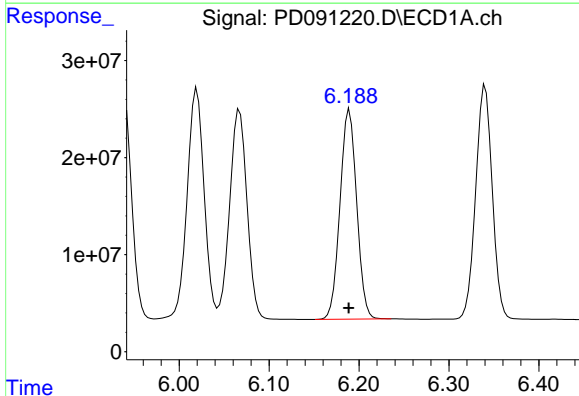
R.T.: 6.020 min  
Delta R.T.: 0.001 min  
Response: 313203628  
Conc: 45.51 ng/ml

Instrument :  
ECD\_D  
ClientSampleId :



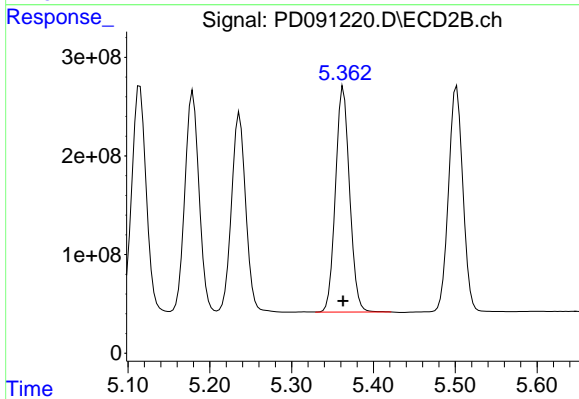
#11 alpha-Chlordane

R.T.: 5.179 min  
Delta R.T.: 0.000 min  
Response: 2706019515  
Conc: 51.71 ng/ml



#12 4,4'-DDE

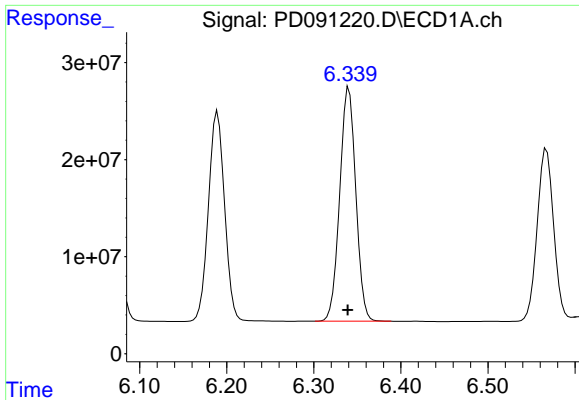
R.T.: 6.189 min  
Delta R.T.: 0.000 min  
Response: 278582789  
Conc: 48.04 ng/ml



#12 4,4'-DDE

R.T.: 5.363 min  
Delta R.T.: 0.000 min  
Response: 2735913086  
Conc: 51.19 ng/ml

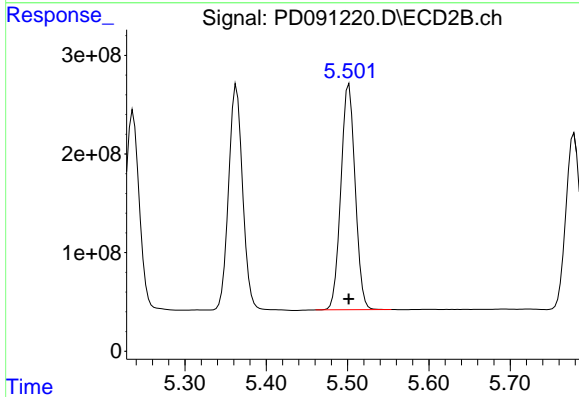




#13 Dieldrin

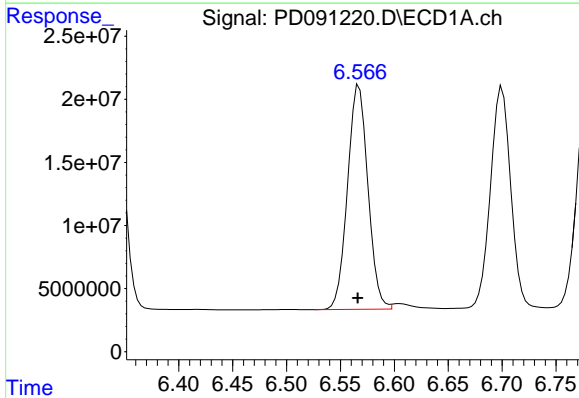
R.T.: 6.340 min  
 Delta R.T.: 0.001 min  
 Response: 308908100  
 Conc: 47.78 ng/ml

Instrument :  
 ECD\_D  
 ClientSampleId :



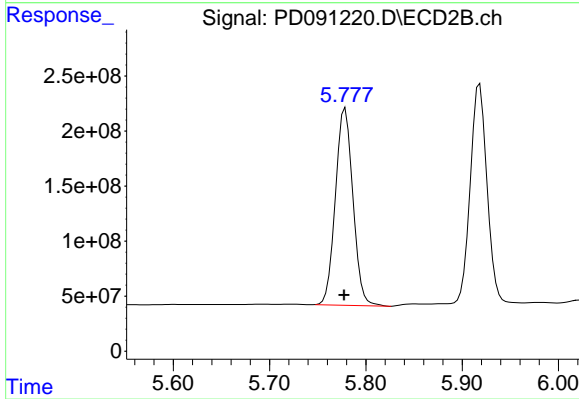
#13 Dieldrin

R.T.: 5.502 min  
 Delta R.T.: 0.000 min  
 Response: 2784623921  
 Conc: 51.27 ng/ml



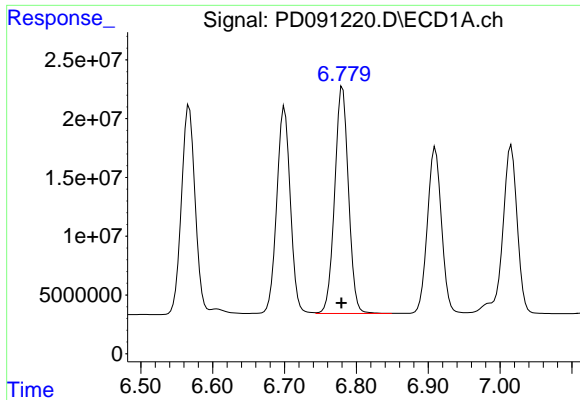
#14 Endrin

R.T.: 6.567 min  
 Delta R.T.: 0.001 min  
 Response: 234434056  
 Conc: 47.23 ng/ml



#14 Endrin

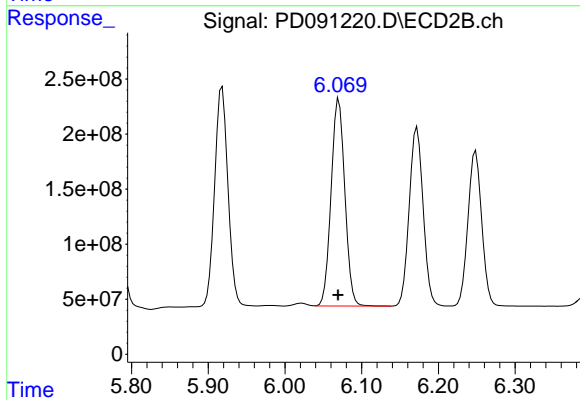
R.T.: 5.779 min  
 Delta R.T.: 0.001 min  
 Response: 2265900141  
 Conc: 50.14 ng/ml



#15 Endosulfan II

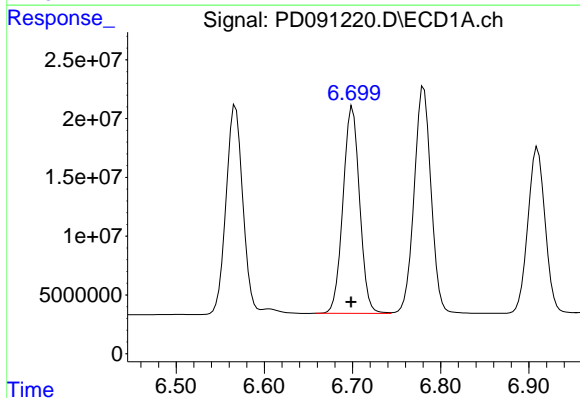
R.T.: 6.781 min  
 Delta R.T.: 0.002 min  
 Response: 257111504  
 Conc: 46.25 ng/ml

Instrument :  
 ECD\_D  
 ClientSampleId :



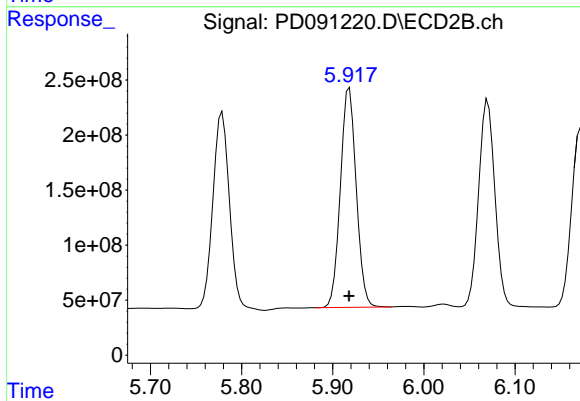
#15 Endosulfan II

R.T.: 6.070 min  
 Delta R.T.: 0.000 min  
 Response: 2343198821  
 Conc: 50.20 ng/ml



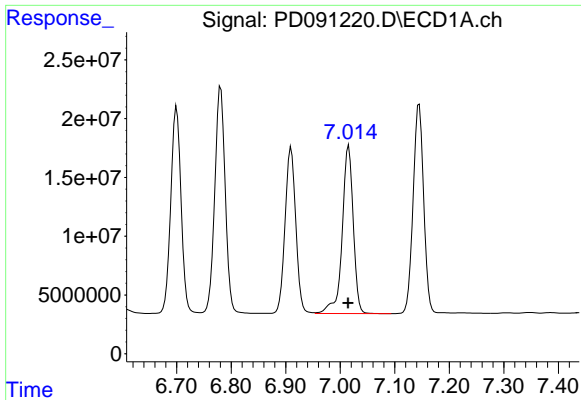
#16 4,4'-DDD

R.T.: 6.700 min  
 Delta R.T.: 0.001 min  
 Response: 230143925  
 Conc: 46.86 ng/ml



#16 4,4'-DDD

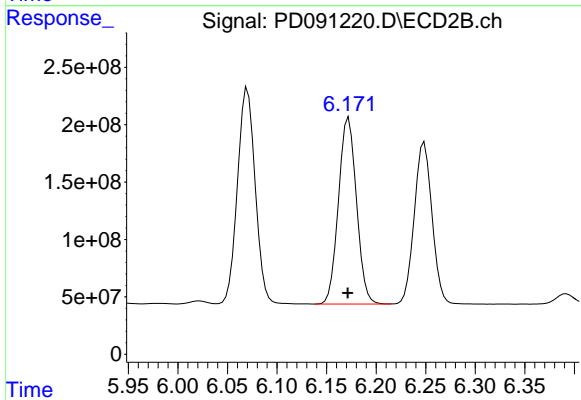
R.T.: 5.918 min  
 Delta R.T.: 0.000 min  
 Response: 2407386209  
 Conc: 49.26 ng/ml



#17 4,4'-DDT

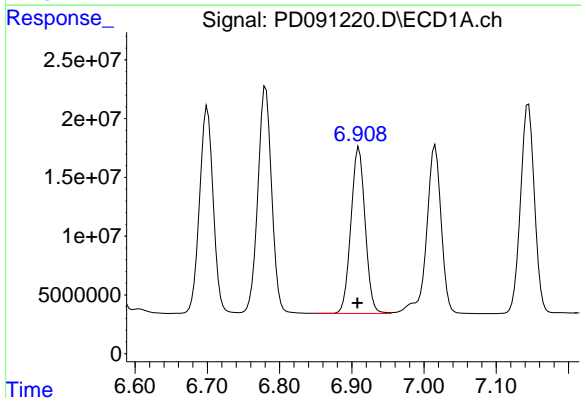
R.T.: 7.016 min  
 Delta R.T.: 0.001 min  
 Response: 201999827  
 Conc: 48.85 ng/ml

Instrument :  
 ECD\_D  
 ClientSampleId :



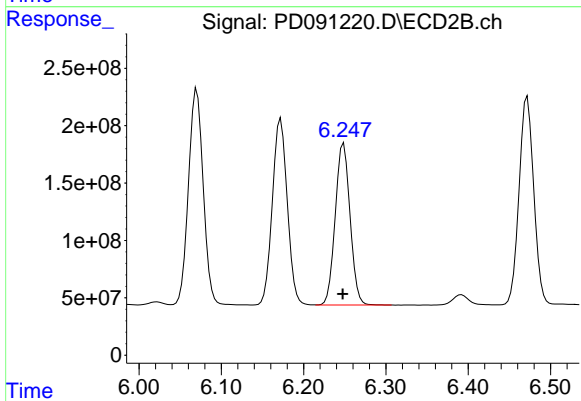
#17 4,4'-DDT

R.T.: 6.172 min  
 Delta R.T.: 0.001 min  
 Response: 2052298122  
 Conc: 52.44 ng/ml



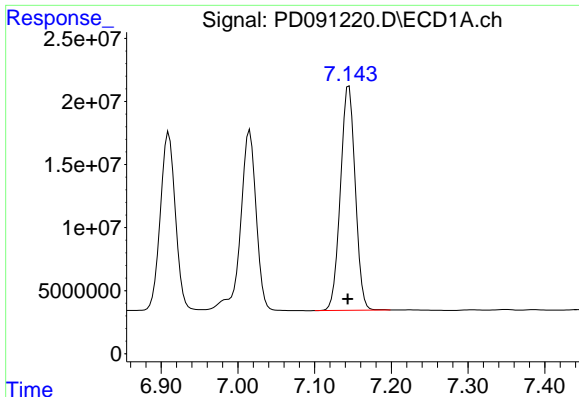
#18 Endrin aldehyde

R.T.: 6.910 min  
 Delta R.T.: 0.002 min  
 Response: 192949827  
 Conc: 46.31 ng/ml



#18 Endrin aldehyde

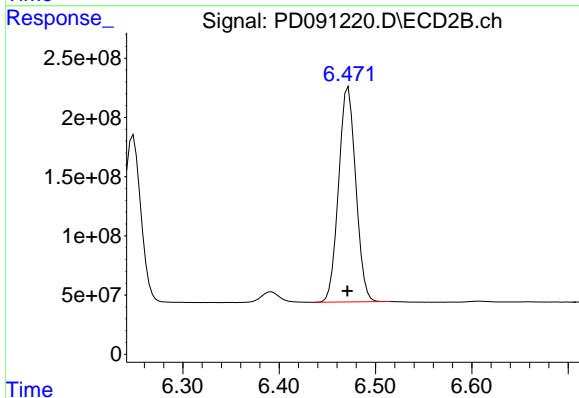
R.T.: 6.249 min  
 Delta R.T.: 0.000 min  
 Response: 1760048546  
 Conc: 49.88 ng/ml



#19 Endosulfan Sulfate

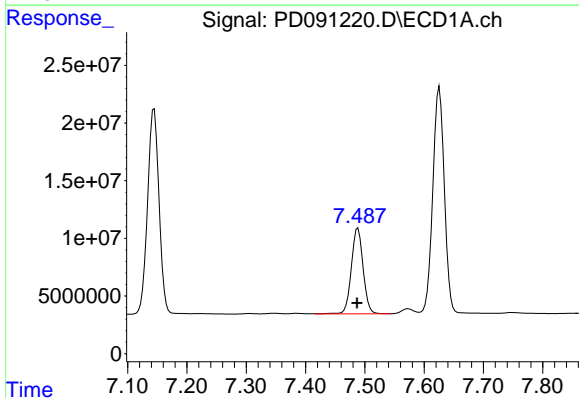
R.T.: 7.145 min  
 Delta R.T.: 0.002 min  
 Response: 238996998  
 Conc: 46.45 ng/ml

Instrument :  
 ECD\_D  
 ClientSampleId :



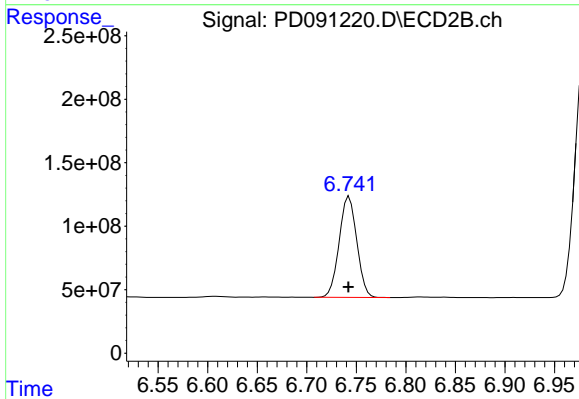
#19 Endosulfan Sulfate

R.T.: 6.472 min  
 Delta R.T.: 0.001 min  
 Response: 2241524662  
 Conc: 50.00 ng/ml



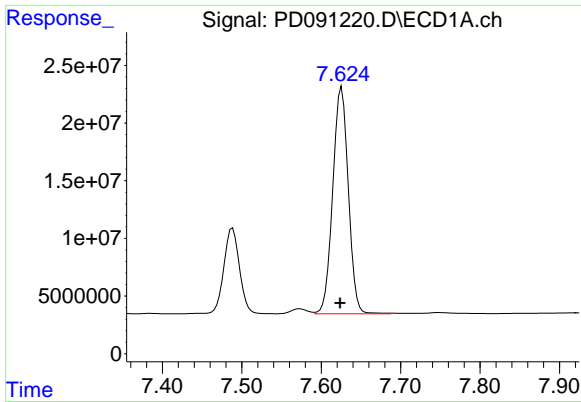
#20 Methoxychlor

R.T.: 7.488 min  
 Delta R.T.: 0.001 min  
 Response: 102818998  
 Conc: 47.29 ng/ml



#20 Methoxychlor

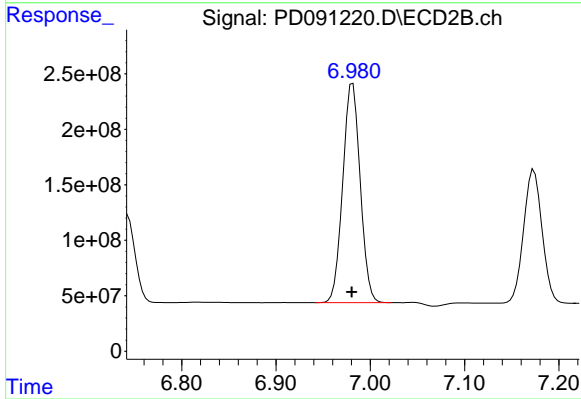
R.T.: 6.743 min  
 Delta R.T.: 0.000 min  
 Response: 983738281  
 Conc: 49.06 ng/ml



#21 Endrin ketone

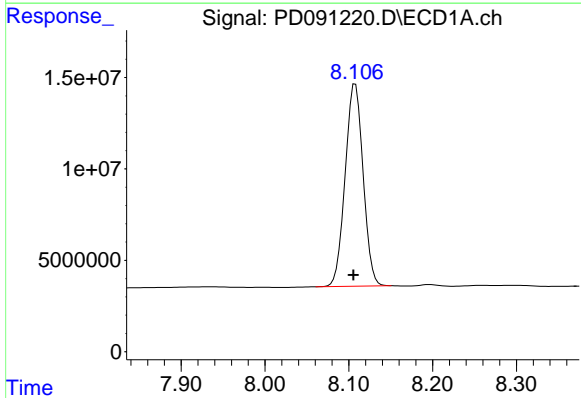
R.T.: 7.626 min  
 Delta R.T.: 0.002 min  
 Response: 267624463  
 Conc: 47.51 ng/ml

Instrument :  
 ECD\_D  
 ClientSampleId :



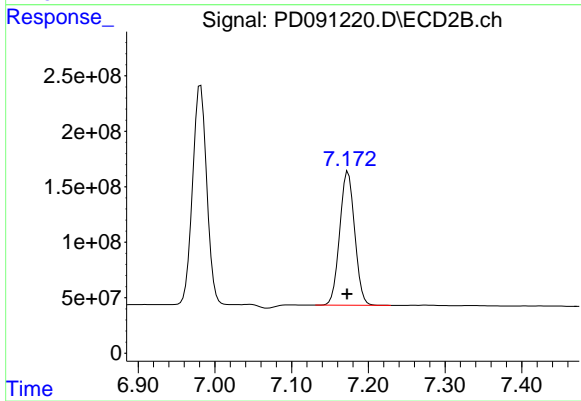
#21 Endrin ketone

R.T.: 6.981 min  
 Delta R.T.: 0.001 min  
 Response: 2547501278  
 Conc: 49.99 ng/ml



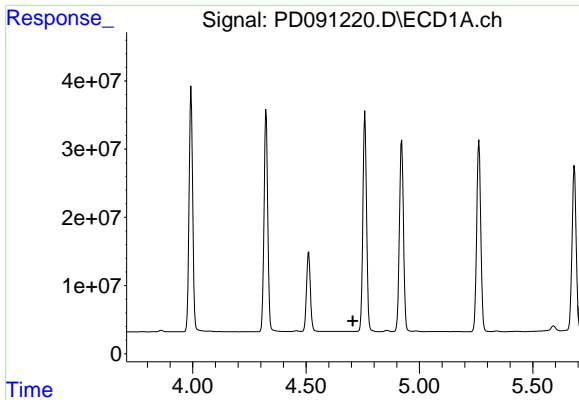
#22 Mirex

R.T.: 8.108 min  
 Delta R.T.: 0.002 min  
 Response: 165103038  
 Conc: 46.42 ng/ml



#22 Mirex

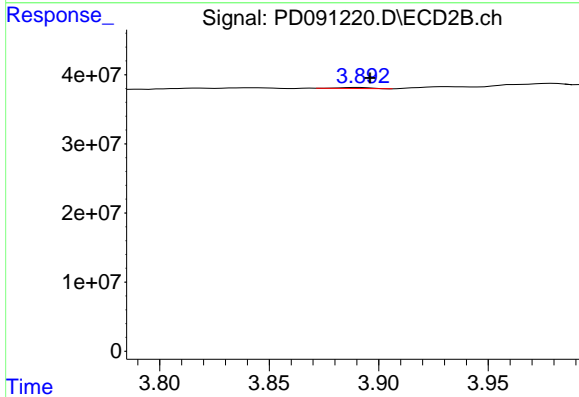
R.T.: 7.173 min  
 Delta R.T.: 0.001 min  
 Response: 1635110709  
 Conc: 49.34 ng/ml



#23 Chlordane-1

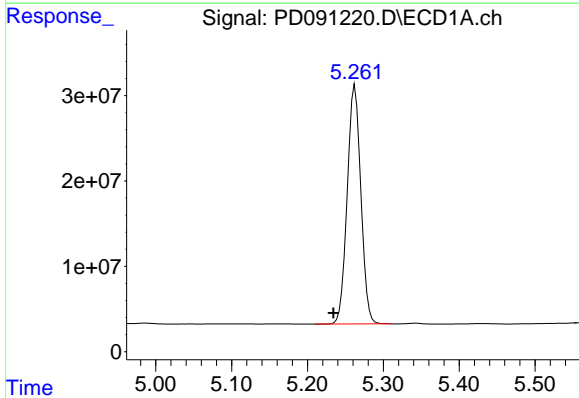
R.T.: 0.000 min  
 Exp R.T.: 4.707 min  
 Response: 0  
 Conc: N.D.

Instrument :  
 ECD\_D  
 ClientSampleId :



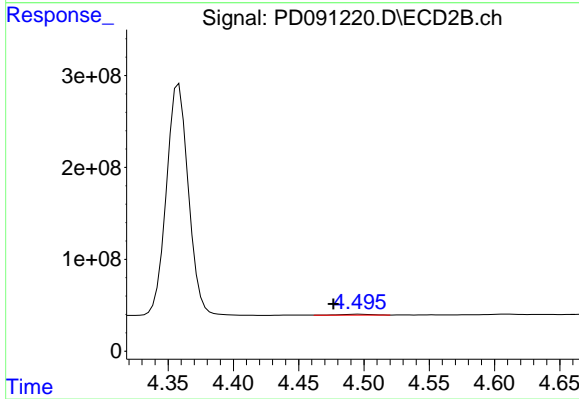
#23 Chlordane-1

R.T.: 3.891 min  
 Delta R.T.: -0.005 min  
 Response: 1399285  
 Conc: 0.81 ng/ml



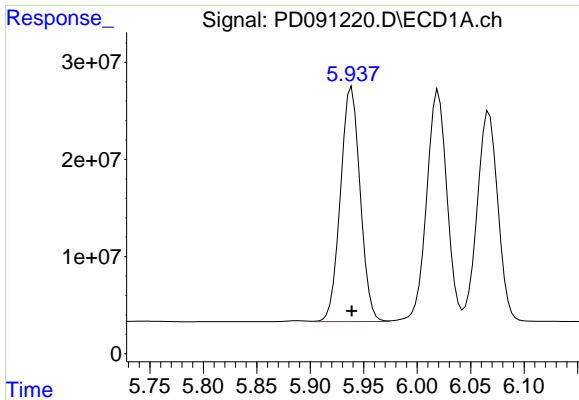
#24 Chlordane-2

R.T.: 5.263 min  
 Delta R.T.: 0.028 min  
 Response: 349168872  
 Conc: 1414.04 ng/ml



#24 Chlordane-2

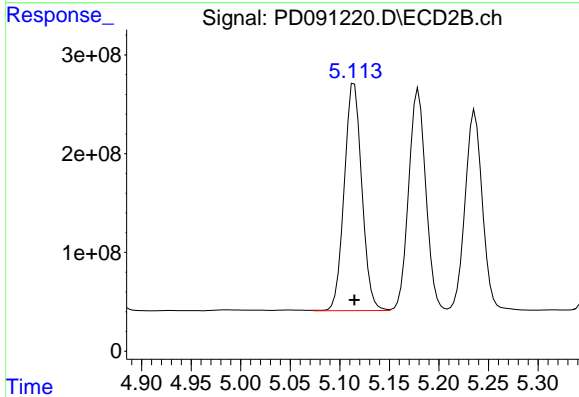
R.T.: 4.496 min  
 Delta R.T.: 0.020 min  
 Response: 14329566  
 Conc: 8.18 ng/ml



#25 Chlordane-3

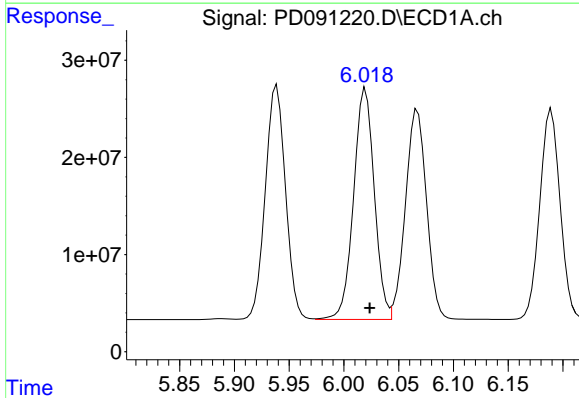
R.T.: 5.939 min  
 Delta R.T.: 0.000 min  
 Response: 310125965  
 Conc: 321.43 ng/ml

Instrument :  
 ECD\_D  
 ClientSampleId :



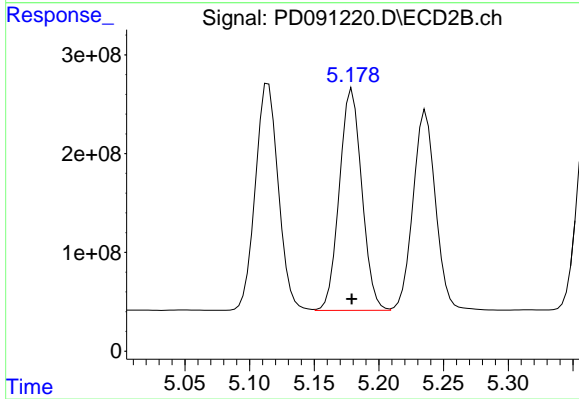
#25 Chlordane-3

R.T.: 5.115 min  
 Delta R.T.: 0.000 min  
 Response: 2843764305  
 Conc: 494.26 ng/ml



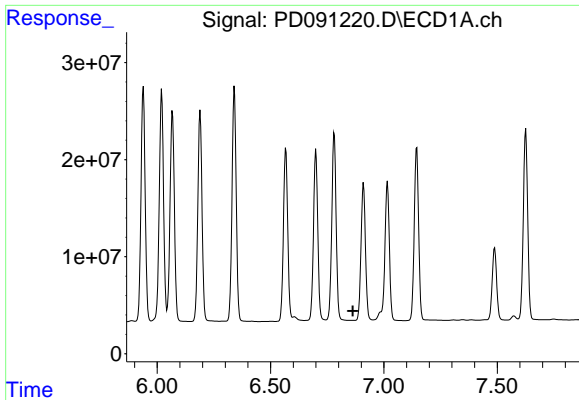
#26 Chlordane-4

R.T.: 6.020 min  
 Delta R.T.: -0.004 min  
 Response: 313203628  
 Conc: 260.74 ng/ml



#26 Chlordane-4

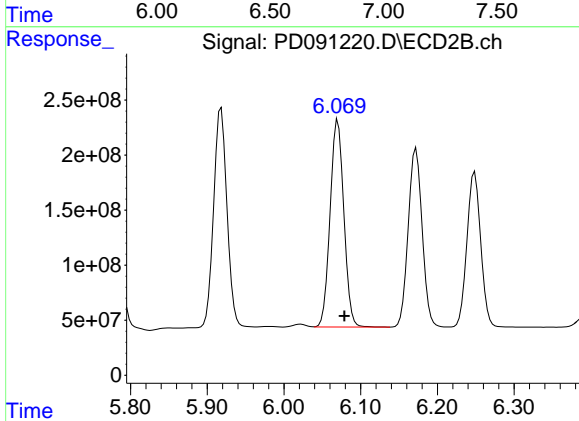
R.T.: 5.179 min  
 Delta R.T.: 0.000 min  
 Response: 2706019515  
 Conc: 565.69 ng/ml



#27 Chlordane-5

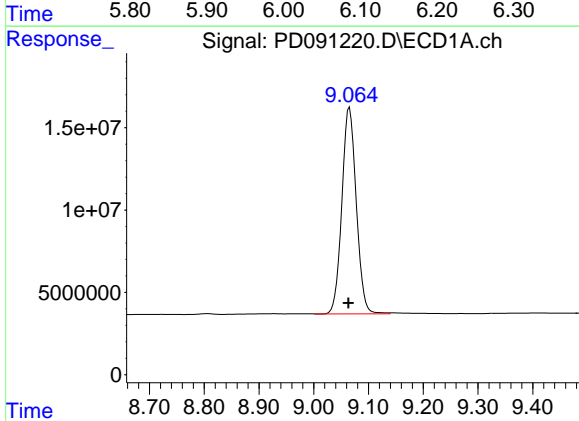
R.T.: 0.000 min  
 Exp R.T.: 6.863 min  
 Response: 0  
 Conc: N.D.

Instrument :  
 ECD\_D  
 ClientSampleId :



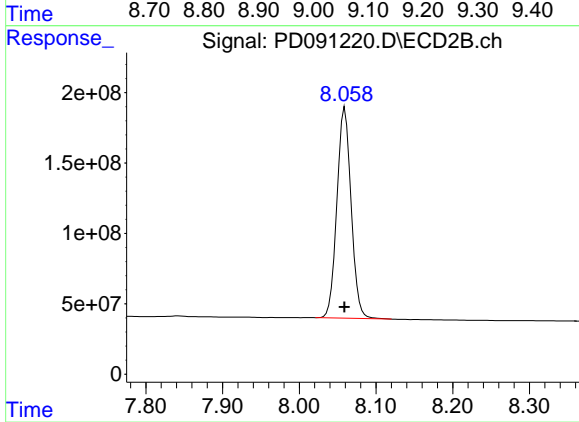
#27 Chlordane-5

R.T.: 6.070 min  
 Delta R.T.: -0.009 min  
 Response: 2343198821  
 Conc: 1154.74 ng/ml



#28 Decachlorobiphenyl

R.T.: 9.065 min  
 Delta R.T.: 0.002 min  
 Response: 228754471  
 Conc: 45.92 ng/ml



#28 Decachlorobiphenyl

R.T.: 8.059 min  
 Delta R.T.: 0.000 min  
 Response: 1927379807  
 Conc: 48.70 ng/ml