

Data Path : Z:\pestpcbsrv\HPCHEM1\ECD_D\Data\PD111725\
 Data File : PD091221.D
 Signal(s) : Signal #1: ECD1A.ch Signal #2: ECD2B.ch
 Acq On : 17 Nov 2025 12:54
 Operator : AR\AJ
 Sample : PB170527BS
 Misc :
 ALS Vial : 5 Sample Multiplier: 1

Instrument :
 ECD_D
 ClientSampleId :

Integration File signal 1: autoint1.e
 Integration File signal 2: autoint2.e
 Quant Time: Nov 18 01:08:20 2025
 Quant Method : Z:\pestpcbsrv\HPCHEM1\ECD_D\Method\PD111525.M
 Quant Title : GC Extractables
 QLast Update : Sat Nov 15 04:46:13 2025
 Response via : Initial Calibration
 Integrator: ChemStation

Volume Inj. : 1 µl
 Signal #1 Phase : ZB-MR2 Signal #2 Phase: ZB-MR2
 Signal #1 Info : 30M x 0.32mm x0.5 Signal #2 Info : 30M x 0.32mm x 0.25µm

	Compound	RT#1	RT#2	Resp#1	Resp#2	ng/ml	ng/ml

System Monitoring Compounds							
1)	SA Tetrachlo...	3.549	2.873	74181191	880.8E6	21.510	24.046
28)	SA Decachlor...	9.073	8.061	117.0E6	983.7E6	23.487	24.857
Target Compounds							
2)	A alpha-BHC	3.999	3.385	392.5E6	3246.6E6	49.094	51.368
3)	MA gamma-BHC...	4.330	3.721	366.1E6	2979.4E6	48.984	51.528
4)	MA Heptachlor	4.928	4.073	350.5E6	2806.9E6	48.936	50.842
5)	MB Aldrin	5.269	4.359	353.3E6	2916.6E6	48.689	51.660
6)	B beta-BHC	4.517	4.017	136.6E6	1219.4E6	47.021	50.750
7)	B delta-BHC	4.766	4.254	366.6E6	2995.4E6	49.327	51.224
8)	B Heptachlo...	5.689	4.862	312.5E6	2637.4E6	48.100	51.755
9)	A Endosulfan I	6.074	5.237	296.6E6	2467.1E6	48.282	51.557
10)	B gamma-Chl...	5.946	5.115	318.5E6	2840.9E6	48.993	52.005
11)	B alpha-Chl...	6.026	5.180	317.7E6	2702.3E6	46.164	51.639
12)	B 4,4'-DDE	6.196	5.364	283.4E6	2737.5E6	48.860	51.224
13)	MA Dieldrin	6.346	5.502	315.8E6	2782.5E6	48.846	51.233
14)	MA Endrin	6.574	5.779	221.0E6	2083.0E6	44.523	46.092
15)	B Endosulfa...	6.787	6.071	269.3E6	2372.0E6	48.434	50.814
16)	A 4,4'-DDD	6.706	5.919	236.3E6	2438.6E6	48.110	49.902
17)	MA 4,4'-DDT	7.022	6.173	205.0E6	2071.8E6	49.578	52.942
18)	B Endrin al...	6.915	6.250	206.1E6	1869.5E6	49.479	52.976
19)	B Endosulfa...	7.151	6.473	245.5E6	2278.4E6	47.713	50.818
20)	A Methoxychlor	7.495	6.743	100.5E6	979.1E6	46.209	48.829
21)	B Endrin ke...	7.632	6.982	281.3E6	2679.1E6	49.929	52.578
22)	Mirex	8.114	7.175	165.6E6	1647.6E6	46.562	49.715
23)	Chlordane-1	0.000	3.891	0	1279711	N.D.	0.744 #
24)	Chlordane-2	0.000	4.497f	0	15572101	N.D.	8.893 #
25)	Chlordane-3	5.946	5.115	318.5E6	2840.9E6	330.096	493.757 #
26)	Chlordane-4	6.026	5.180	317.7E6	2702.3E6	264.519	564.918 #
27)	Chlordane-5	0.000	6.071	0	2372.0E6	N.D.	1168.930 #

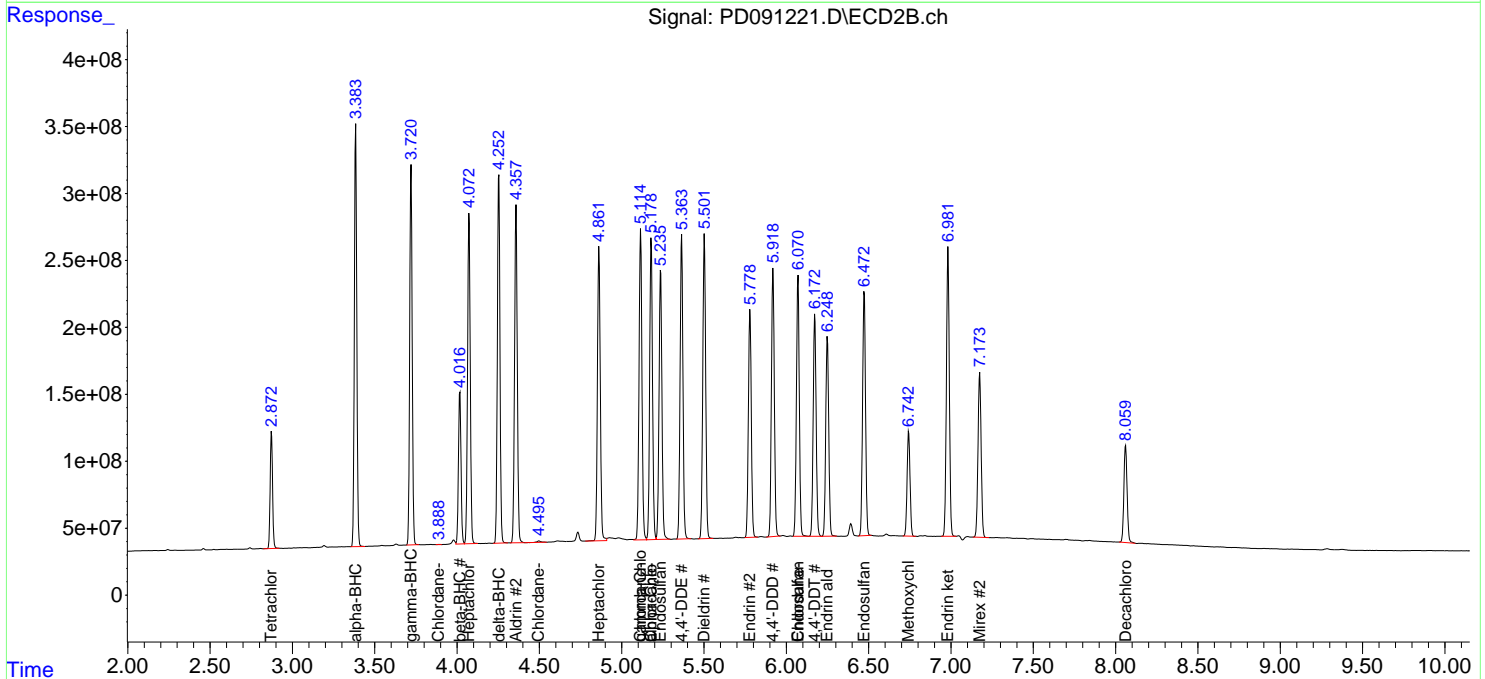
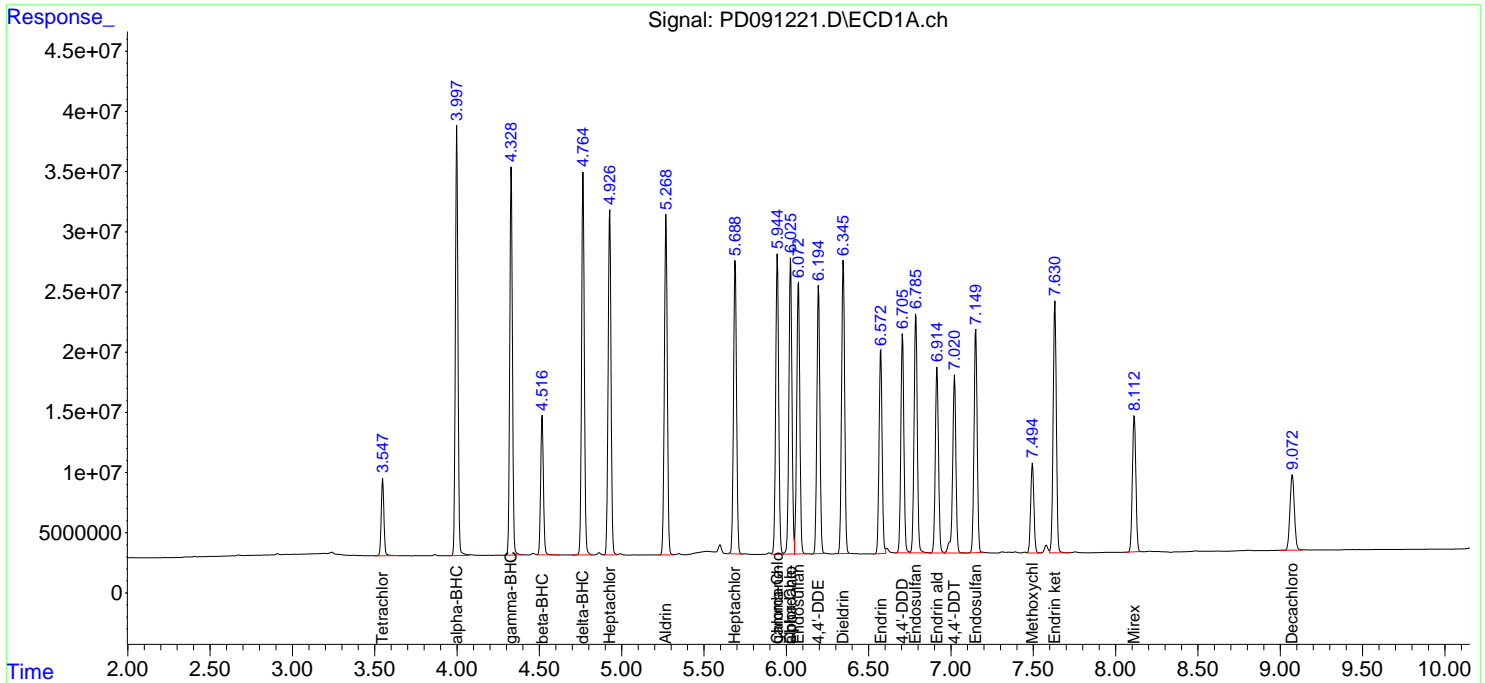
(f)=RT Delta > 1/2 Window (#)=Amounts differ by > 25% (m)=manual int.

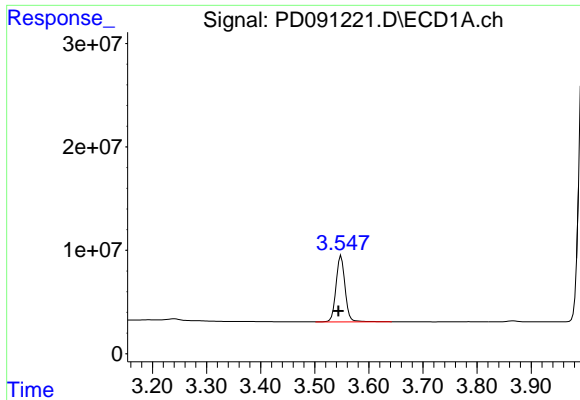
Data Path : Z:\pestpcbsrv\HPCHEM1\ECD_D\Data\PD111725\
 Data File : PD091221.D
 Signal(s) : Signal #1: ECD1A.ch Signal #2: ECD2B.ch
 Acq On : 17 Nov 2025 12:54
 Operator : AR\AJ
 Sample : PB170527BS
 Misc :
 ALS Vial : 5 Sample Multiplier: 1

Instrument :
 ECD_D
 ClientSampleId :

Integration File signal 1: autoint1.e
 Integration File signal 2: autoint2.e
 Quant Time: Nov 18 01:08:20 2025
 Quant Method : Z:\pestpcbsrv\HPCHEM1\ECD_D\Method\PD111525.M
 Quant Title : GC Extractables
 QLast Update : Sat Nov 15 04:46:13 2025
 Response via : Initial Calibration
 Integrator: ChemStation

Volume Inj. : 1 µl
 Signal #1 Phase : ZB-MR1 Signal #2 Phase: ZB-MR2
 Signal #1 Info : 30M x 0.32mm x0.5 Signal #2 Info : 30M x 0.32mm x 0.25µm

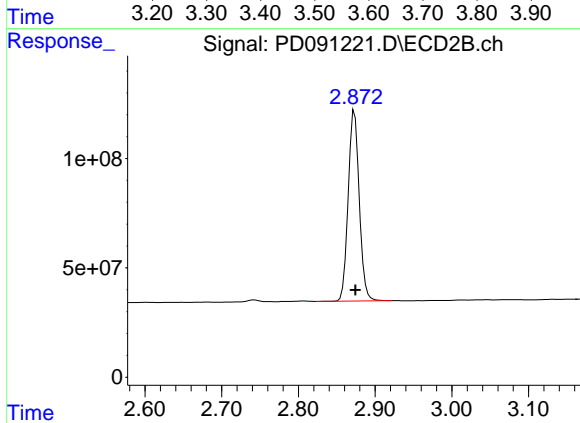




#1 Tetrachloro-m-xylene

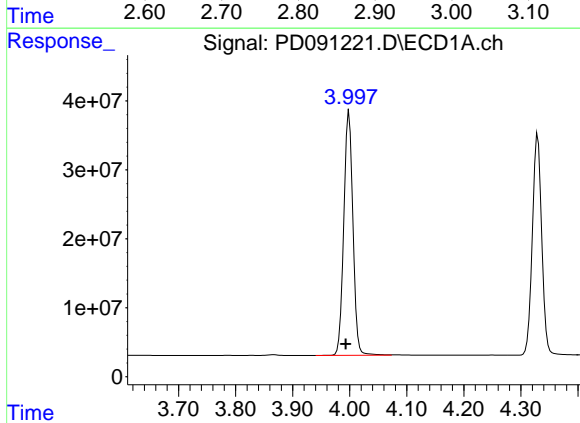
R.T.: 3.549 min
 Delta R.T.: 0.005 min
 Response: 74181191
 Conc: 21.51 ng/ml

Instrument :
 ECD_D
 ClientSampleId :



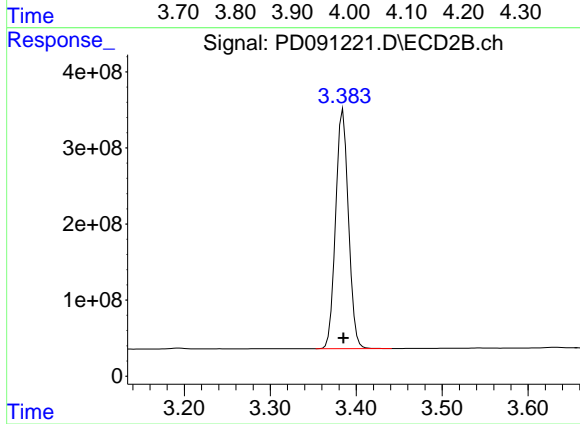
#1 Tetrachloro-m-xylene

R.T.: 2.873 min
 Delta R.T.: -0.001 min
 Response: 880798191
 Conc: 24.05 ng/ml



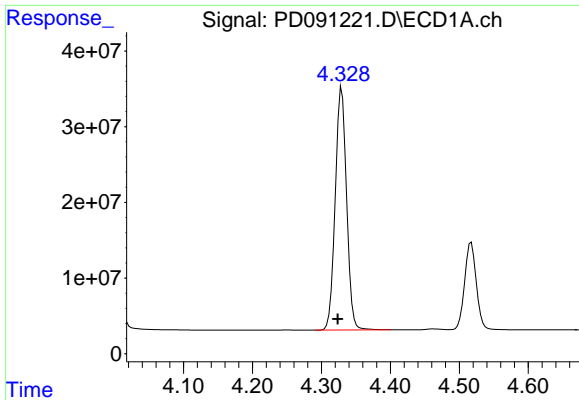
#2 alpha-BHC

R.T.: 3.999 min
 Delta R.T.: 0.006 min
 Response: 392531495
 Conc: 49.09 ng/ml



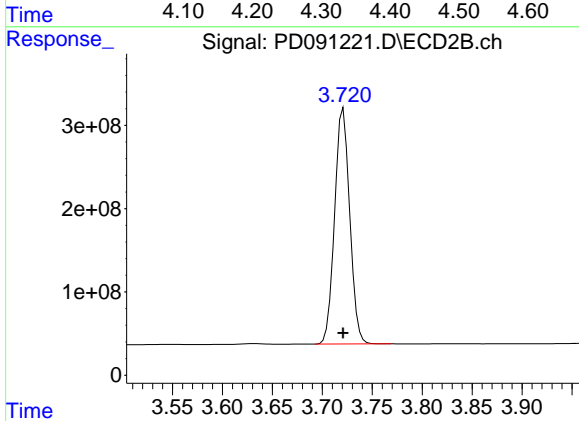
#2 alpha-BHC

R.T.: 3.385 min
 Delta R.T.: 0.000 min
 Response: 3246603259
 Conc: 51.37 ng/ml

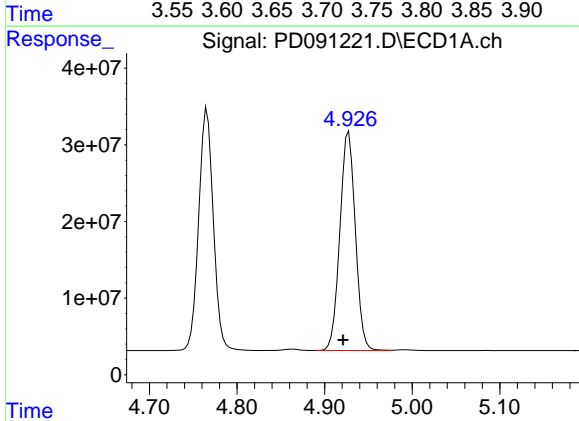


#3 gamma-BHC (Lindane)
 R.T.: 4.330 min
 Delta R.T.: 0.006 min
 Response: 366051338
 Conc: 48.98 ng/ml

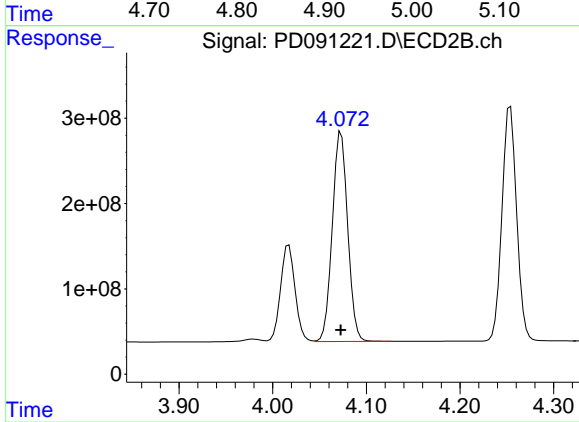
Instrument :
 ECD_D
 ClientSampleId :



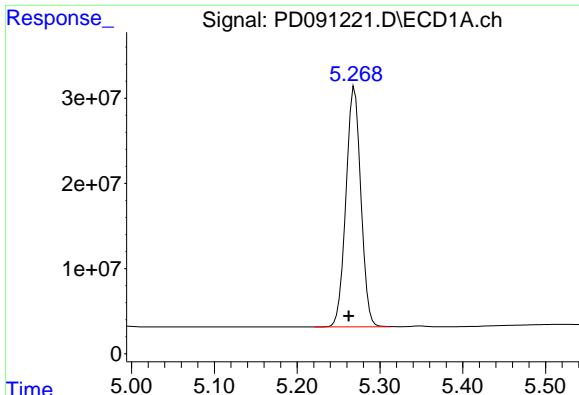
#3 gamma-BHC (Lindane)
 R.T.: 3.721 min
 Delta R.T.: 0.000 min
 Response: 2979413541
 Conc: 51.53 ng/ml



#4 Heptachlor
 R.T.: 4.928 min
 Delta R.T.: 0.007 min
 Response: 350465011
 Conc: 48.94 ng/ml



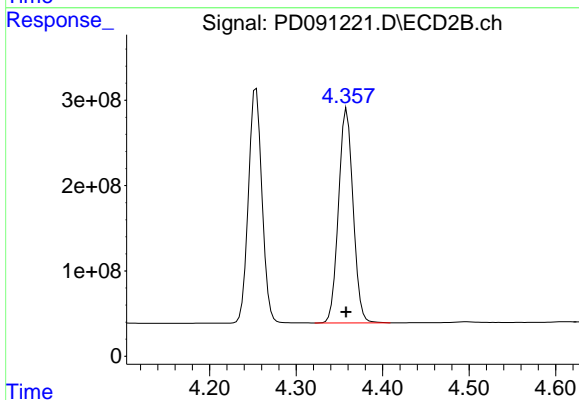
#4 Heptachlor
 R.T.: 4.073 min
 Delta R.T.: 0.000 min
 Response: 2806940973
 Conc: 50.84 ng/ml



#5 Aldrin

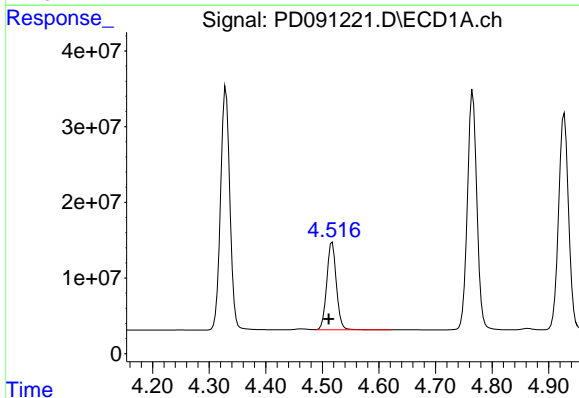
R.T.: 5.269 min
 Delta R.T.: 0.007 min
 Response: 353309674
 Conc: 48.69 ng/ml

Instrument :
 ECD_D
 ClientSampleId :



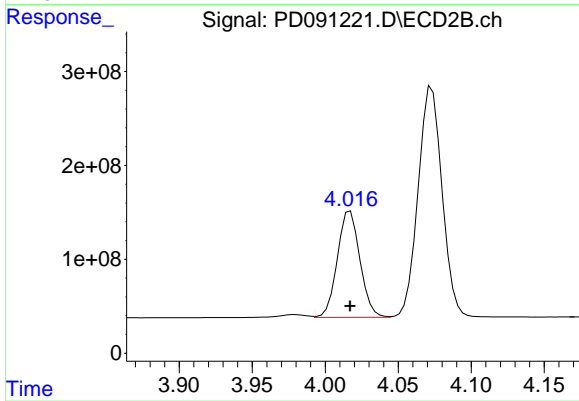
#5 Aldrin

R.T.: 4.359 min
 Delta R.T.: 0.000 min
 Response: 2916619103
 Conc: 51.66 ng/ml



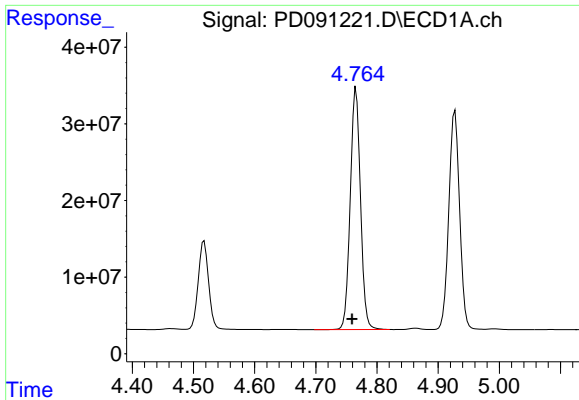
#6 beta-BHC

R.T.: 4.517 min
 Delta R.T.: 0.006 min
 Response: 136618769
 Conc: 47.02 ng/ml



#6 beta-BHC

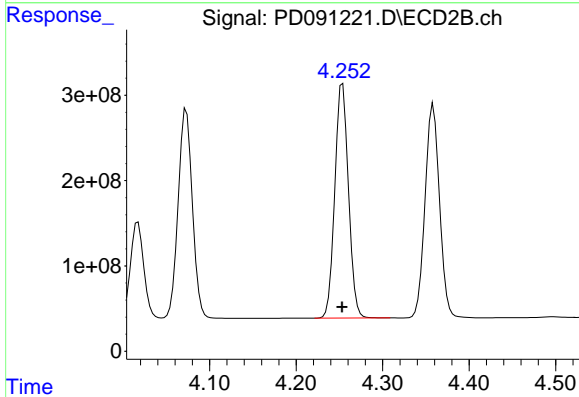
R.T.: 4.017 min
 Delta R.T.: 0.000 min
 Response: 1219371045
 Conc: 50.75 ng/ml



#7 delta-BHC

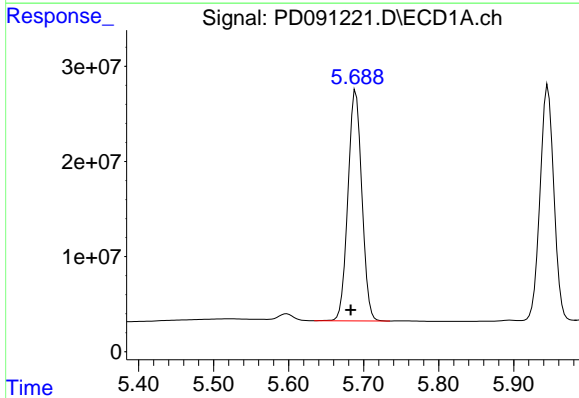
R.T.: 4.766 min
 Delta R.T.: 0.007 min
 Response: 366599209
 Conc: 49.33 ng/ml

Instrument :
 ECD_D
 ClientSampleId :



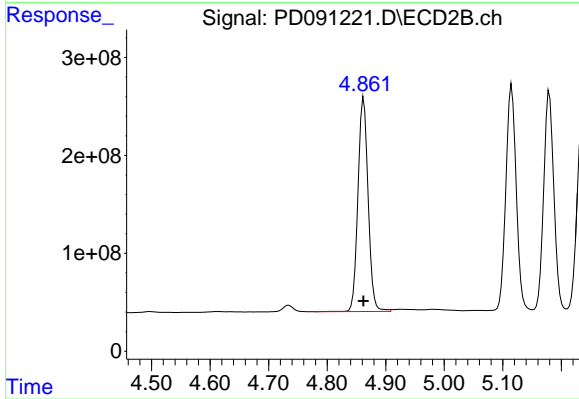
#7 delta-BHC

R.T.: 4.254 min
 Delta R.T.: 0.000 min
 Response: 2995441991
 Conc: 51.22 ng/ml



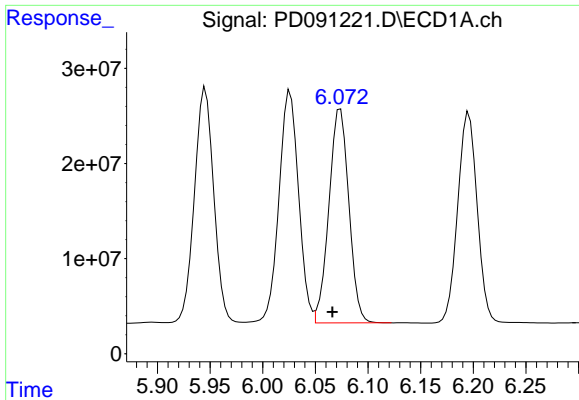
#8 Heptachlor epoxide

R.T.: 5.689 min
 Delta R.T.: 0.007 min
 Response: 312494819
 Conc: 48.10 ng/ml



#8 Heptachlor epoxide

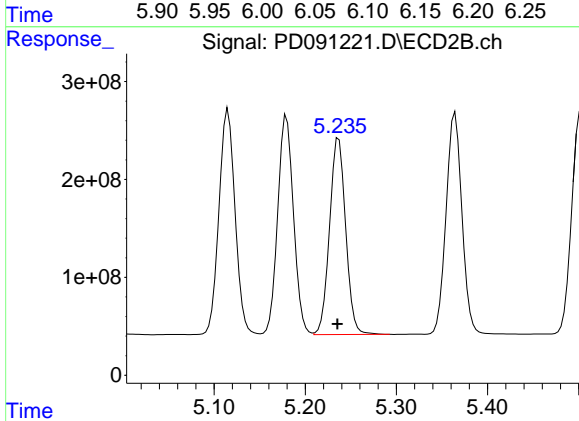
R.T.: 4.862 min
 Delta R.T.: 0.000 min
 Response: 2637381546
 Conc: 51.76 ng/ml



#9 Endosulfan I

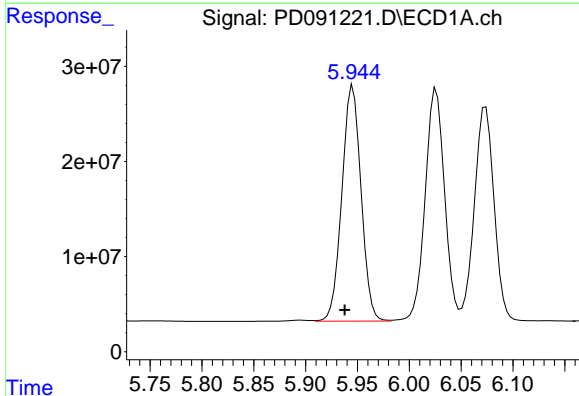
R.T.: 6.074 min
 Delta R.T.: 0.007 min
 Response: 296598335
 Conc: 48.28 ng/ml

Instrument :
 ECD_D
 ClientSampleId :



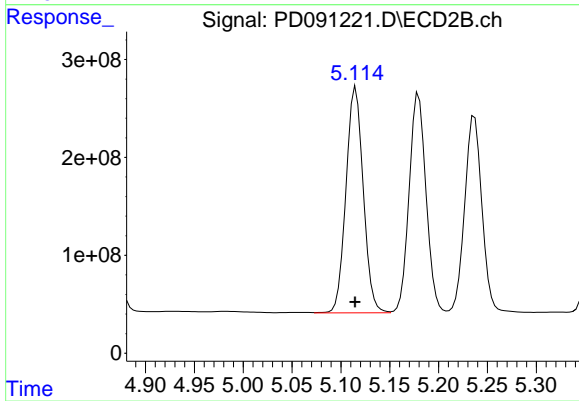
#9 Endosulfan I

R.T.: 5.237 min
 Delta R.T.: 0.001 min
 Response: 2467078264
 Conc: 51.56 ng/ml



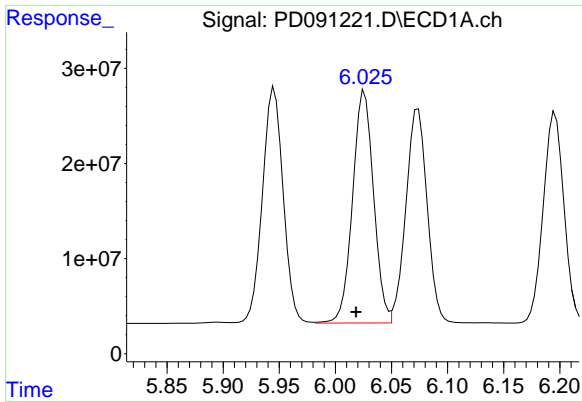
#10 gamma-Chlordane

R.T.: 5.946 min
 Delta R.T.: 0.008 min
 Response: 318491539
 Conc: 48.99 ng/ml



#10 gamma-Chlordane

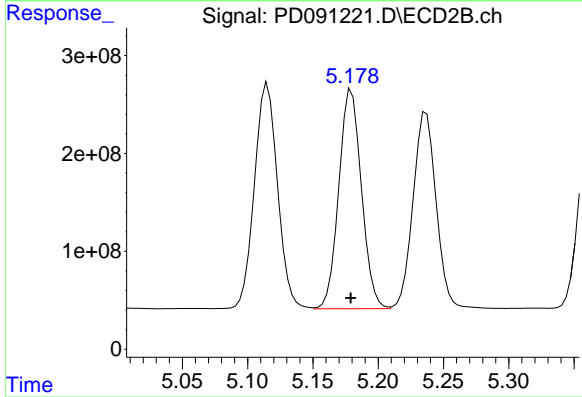
R.T.: 5.115 min
 Delta R.T.: 0.000 min
 Response: 2840870624
 Conc: 52.00 ng/ml



#11 alpha-Chlordane

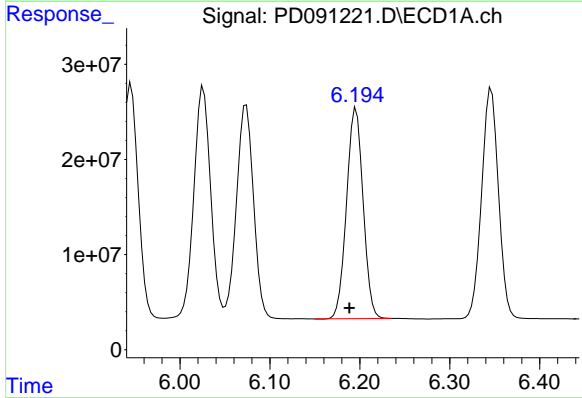
R.T.: 6.026 min
 Delta R.T.: 0.007 min
 Response: 317741198
 Conc: 46.16 ng/ml

Instrument :
 ECD_D
 ClientSampleId :



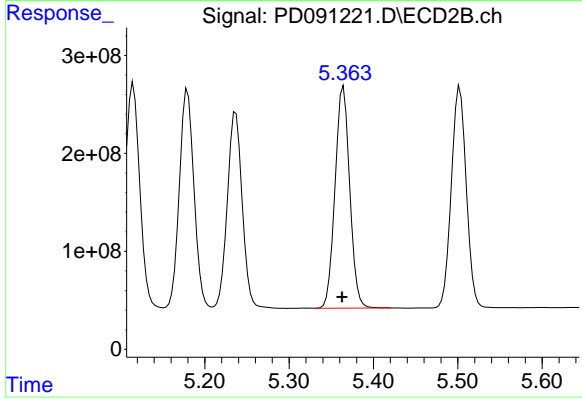
#11 alpha-Chlordane

R.T.: 5.180 min
 Delta R.T.: 0.000 min
 Response: 2702320753
 Conc: 51.64 ng/ml



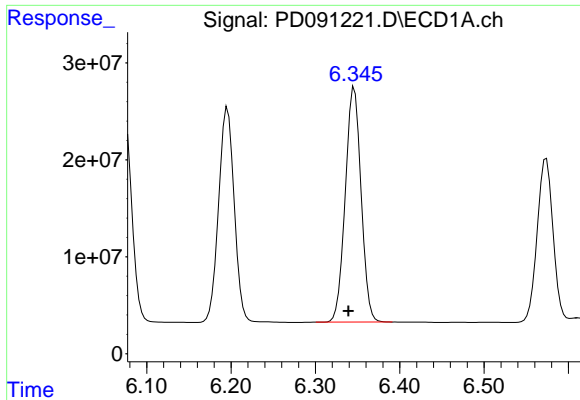
#12 4,4'-DDE

R.T.: 6.196 min
 Delta R.T.: 0.007 min
 Response: 283359754
 Conc: 48.86 ng/ml



#12 4,4'-DDE

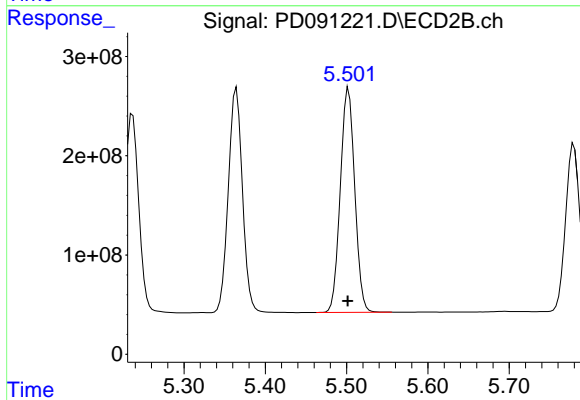
R.T.: 5.364 min
 Delta R.T.: 0.002 min
 Response: 2737542380
 Conc: 51.22 ng/ml



#13 Dieldrin

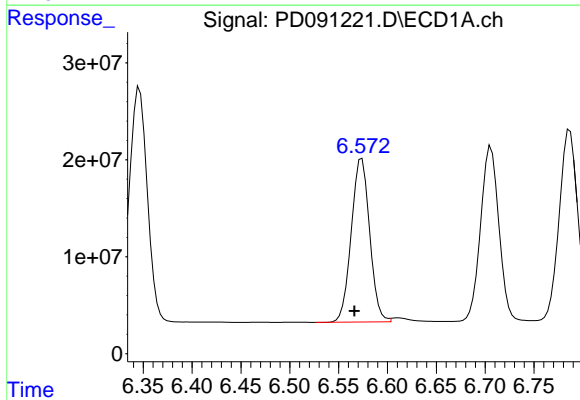
R.T.: 6.346 min
 Delta R.T.: 0.007 min
 Response: 315785428
 Conc: 48.85 ng/ml

Instrument :
 ECD_D
 ClientSampleId :



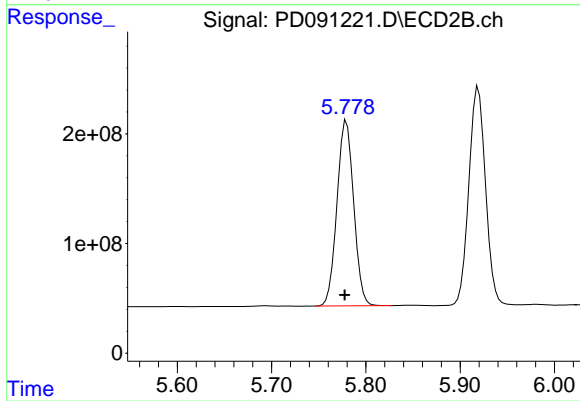
#13 Dieldrin

R.T.: 5.502 min
 Delta R.T.: 0.001 min
 Response: 2782499806
 Conc: 51.23 ng/ml



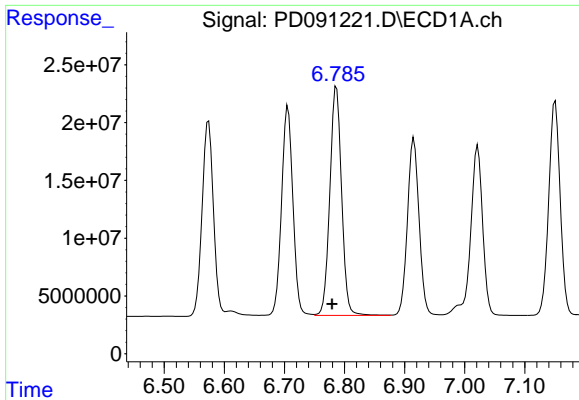
#14 Endrin

R.T.: 6.574 min
 Delta R.T.: 0.008 min
 Response: 220988200
 Conc: 44.52 ng/ml



#14 Endrin

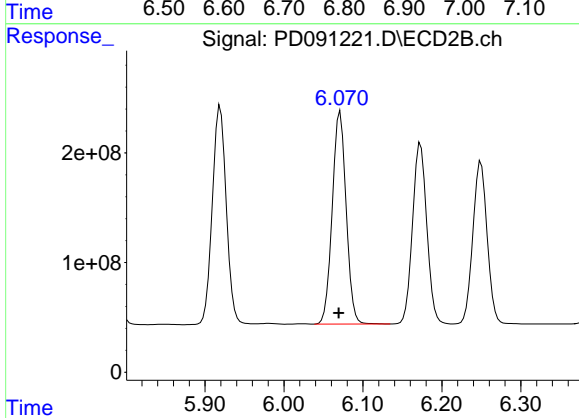
R.T.: 5.779 min
 Delta R.T.: 0.002 min
 Response: 2083023642
 Conc: 46.09 ng/ml



#15 Endosulfan II

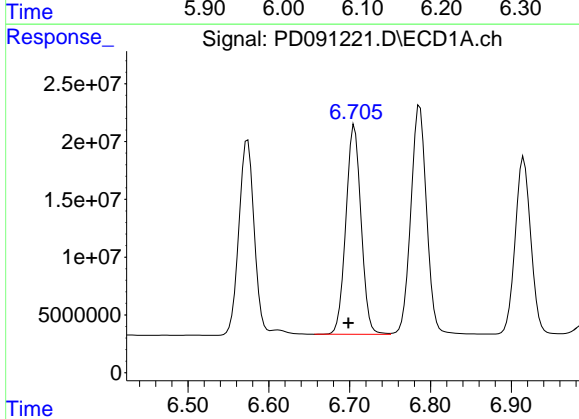
R.T.: 6.787 min
Delta R.T.: 0.007 min
Response: 269260447
Conc: 48.43 ng/ml

Instrument :
ECD_D
ClientSampleId :



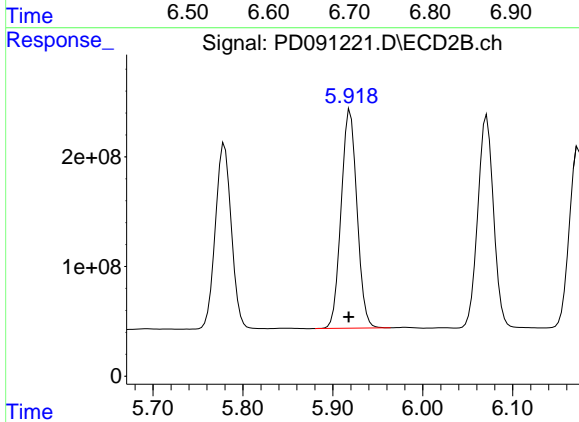
#15 Endosulfan II

R.T.: 6.071 min
Delta R.T.: 0.002 min
Response: 2371996133
Conc: 50.81 ng/ml



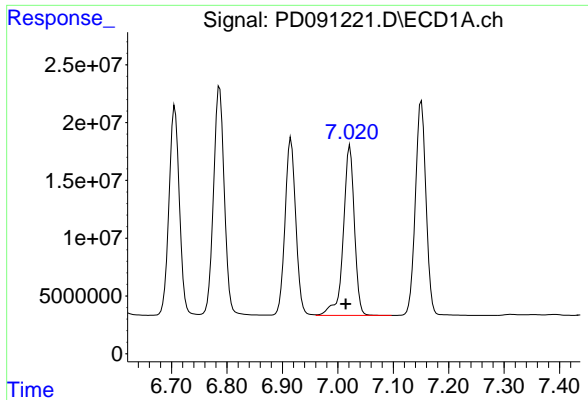
#16 4,4'-DDD

R.T.: 6.706 min
Delta R.T.: 0.007 min
Response: 236291294
Conc: 48.11 ng/ml



#16 4,4'-DDD

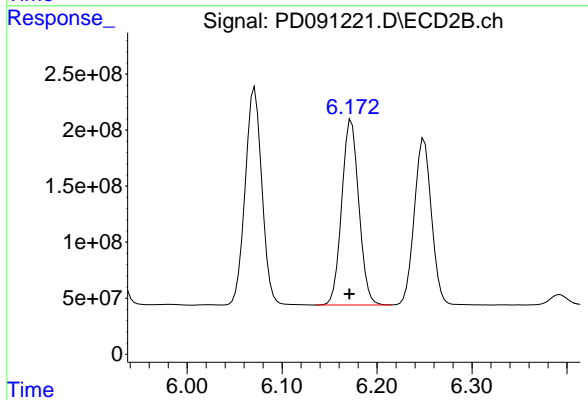
R.T.: 5.919 min
Delta R.T.: 0.001 min
Response: 2438623779
Conc: 49.90 ng/ml



#17 4,4'-DDT

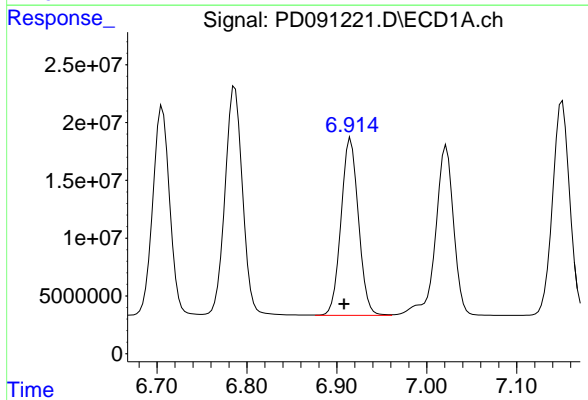
R.T.: 7.022 min
Delta R.T.: 0.008 min
Response: 205032332
Conc: 49.58 ng/ml

Instrument :
ECD_D
ClientSampleId :



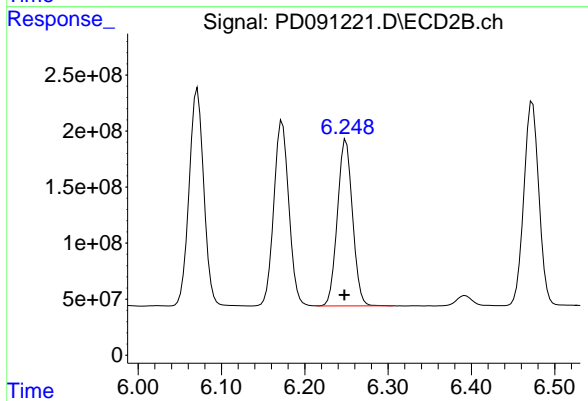
#17 4,4'-DDT

R.T.: 6.173 min
Delta R.T.: 0.002 min
Response: 2071767628
Conc: 52.94 ng/ml



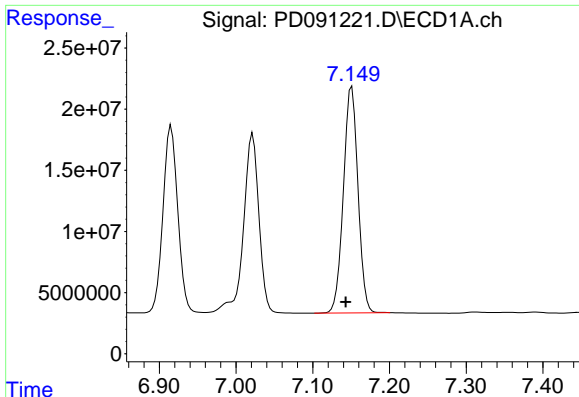
#18 Endrin aldehyde

R.T.: 6.915 min
Delta R.T.: 0.007 min
Response: 206131324
Conc: 49.48 ng/ml



#18 Endrin aldehyde

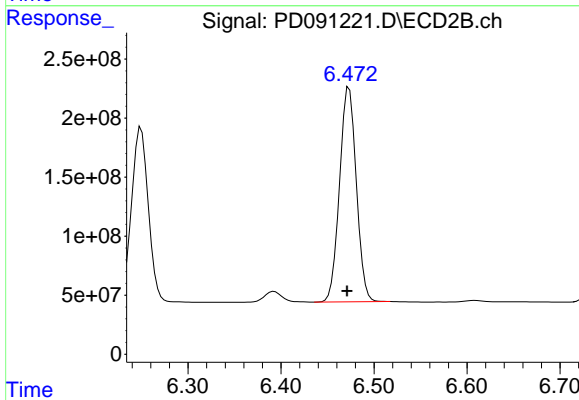
R.T.: 6.250 min
Delta R.T.: 0.002 min
Response: 1869481906
Conc: 52.98 ng/ml



#19 Endosulfan Sulfate

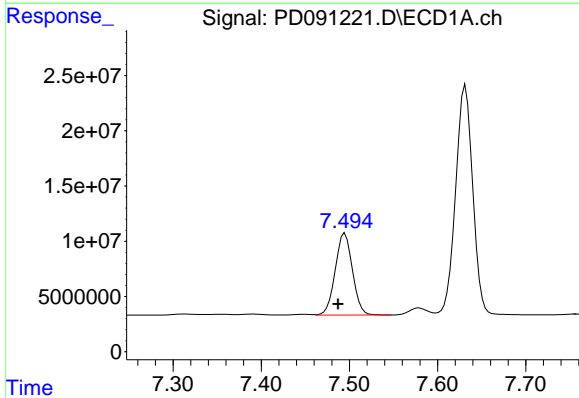
R.T.: 7.151 min
 Delta R.T.: 0.008 min
 Response: 245475715
 Conc: 47.71 ng/ml

Instrument :
 ECD_D
 ClientSampleId :



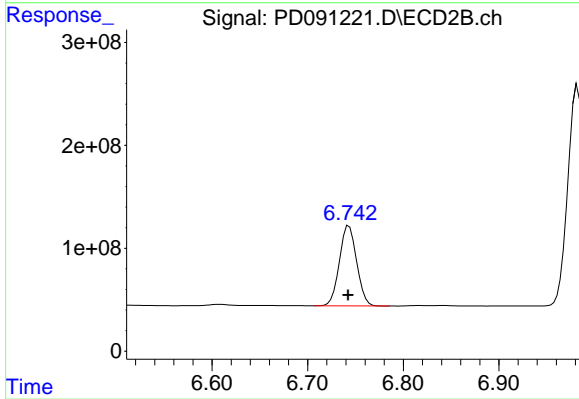
#19 Endosulfan Sulfate

R.T.: 6.473 min
 Delta R.T.: 0.002 min
 Response: 2278442091
 Conc: 50.82 ng/ml



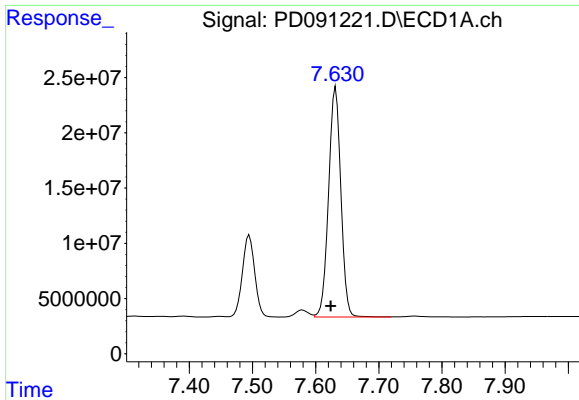
#20 Methoxychlor

R.T.: 7.495 min
 Delta R.T.: 0.008 min
 Response: 100473508
 Conc: 46.21 ng/ml



#20 Methoxychlor

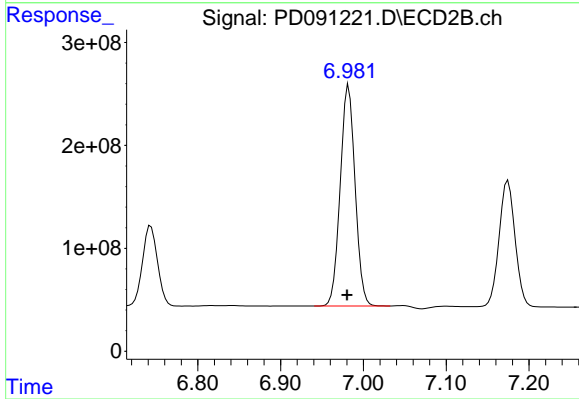
R.T.: 6.743 min
 Delta R.T.: 0.001 min
 Response: 979087597
 Conc: 48.83 ng/ml



#21 Endrin ketone

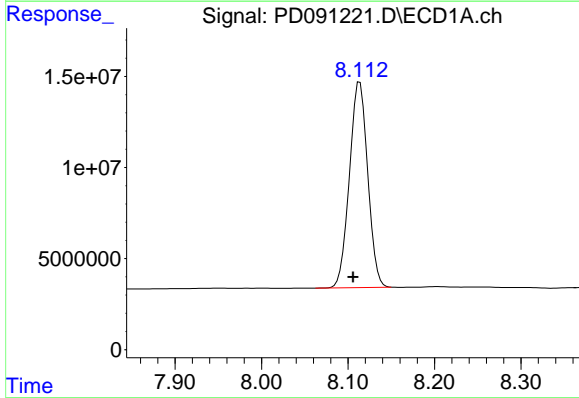
R.T.: 7.632 min
 Delta R.T.: 0.008 min
 Response: 281277117
 Conc: 49.93 ng/ml

Instrument :
 ECD_D
 ClientSampleId :



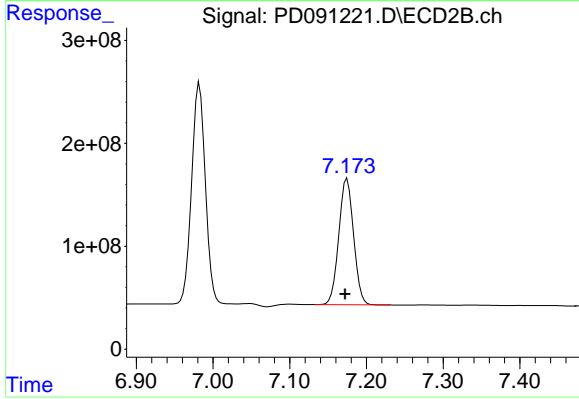
#21 Endrin ketone

R.T.: 6.982 min
 Delta R.T.: 0.002 min
 Response: 2679144621
 Conc: 52.58 ng/ml



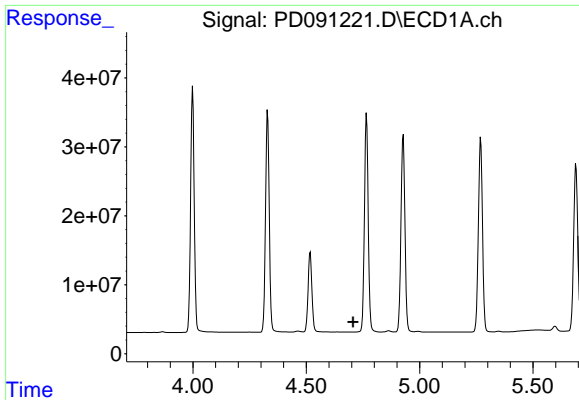
#22 Mirex

R.T.: 8.114 min
 Delta R.T.: 0.008 min
 Response: 165624562
 Conc: 46.56 ng/ml



#22 Mirex

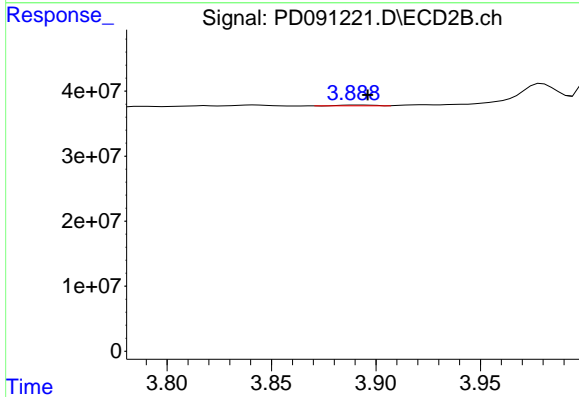
R.T.: 7.175 min
 Delta R.T.: 0.002 min
 Response: 1647567802
 Conc: 49.72 ng/ml



#23 Chlordane-1

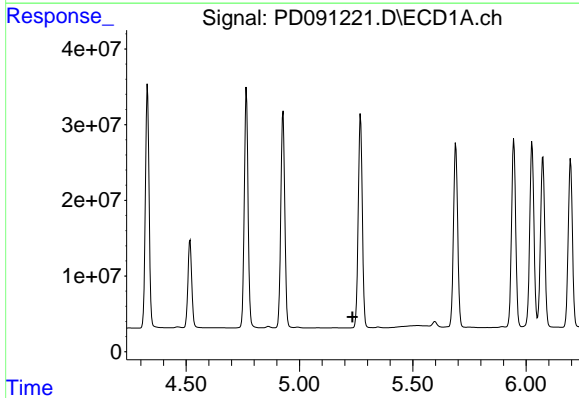
R.T.: 0.000 min
 Exp R.T.: 4.707 min
 Response: 0
 Conc: N.D.

Instrument :
 ECD_D
 ClientSampleId :



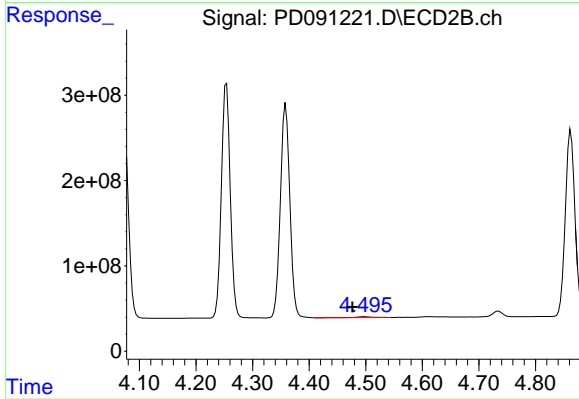
#23 Chlordane-1

R.T.: 3.891 min
 Delta R.T.: -0.005 min
 Response: 1279711
 Conc: 0.74 ng/ml



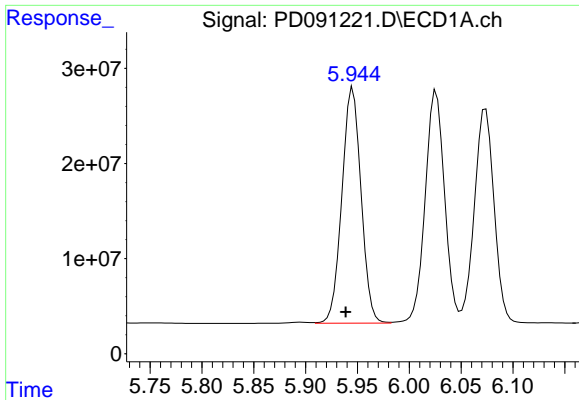
#24 Chlordane-2

R.T.: 0.000 min
 Exp R.T.: 5.234 min
 Response: 0
 Conc: N.D.



#24 Chlordane-2

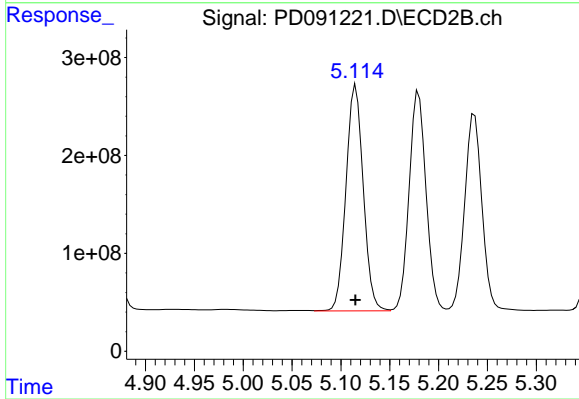
R.T.: 4.497 min
 Delta R.T.: 0.021 min
 Response: 15572101
 Conc: 8.89 ng/ml



#25 Chlordane-3

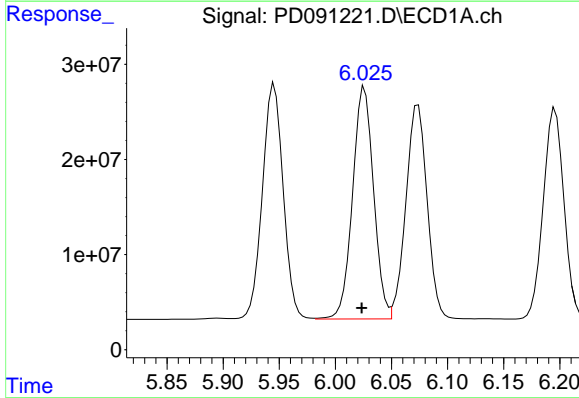
R.T.: 5.946 min
 Delta R.T.: 0.007 min
 Response: 318491539
 Conc: 330.10 ng/ml

Instrument :
 ECD_D
 ClientSampleId :



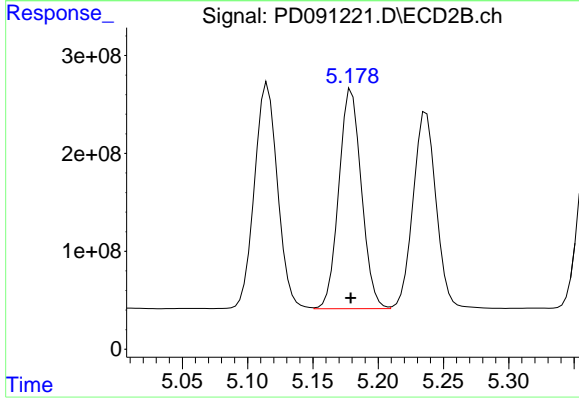
#25 Chlordane-3

R.T.: 5.115 min
 Delta R.T.: 0.000 min
 Response: 2840870624
 Conc: 493.76 ng/ml



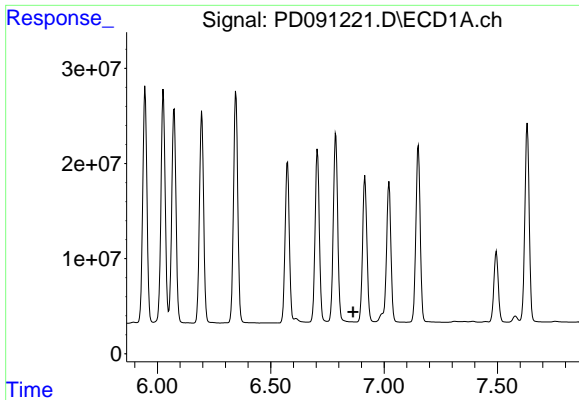
#26 Chlordane-4

R.T.: 6.026 min
 Delta R.T.: 0.002 min
 Response: 317741198
 Conc: 264.52 ng/ml



#26 Chlordane-4

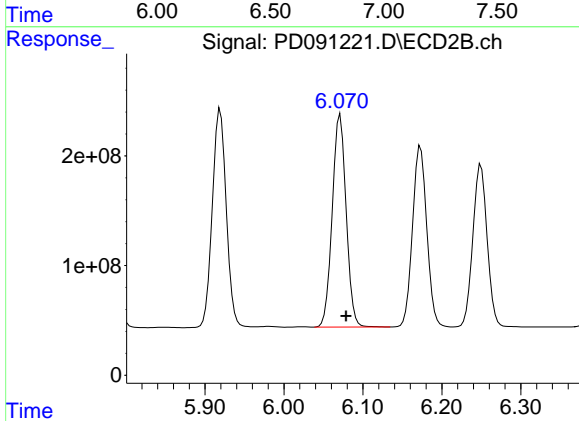
R.T.: 5.180 min
 Delta R.T.: 0.000 min
 Response: 2702320753
 Conc: 564.92 ng/ml



#27 Chlordane-5

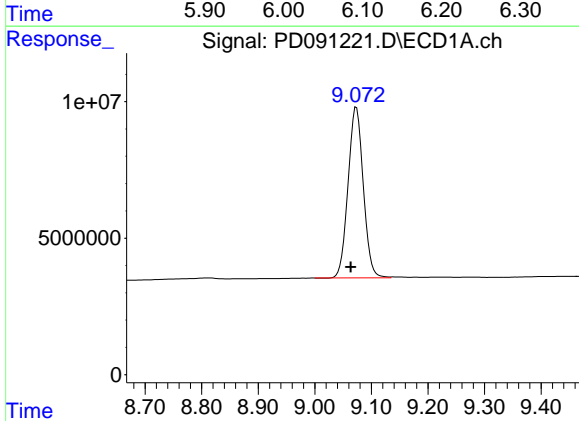
R.T.: 0.000 min
 Exp R.T.: 6.863 min
 Response: 0
 Conc: N.D.

Instrument :
 ECD_D
 ClientSampleId :



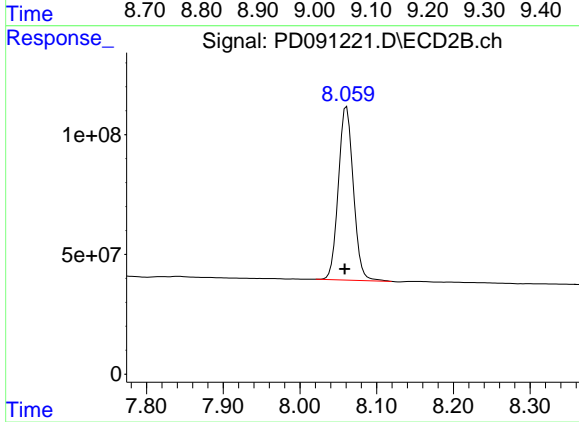
#27 Chlordane-5

R.T.: 6.071 min
 Delta R.T.: -0.008 min
 Response: 2371996133
 Conc: 1168.93 ng/ml



#28 Decachlorobiphenyl

R.T.: 9.073 min
 Delta R.T.: 0.010 min
 Response: 117011579
 Conc: 23.49 ng/ml



#28 Decachlorobiphenyl

R.T.: 8.061 min
 Delta R.T.: 0.002 min
 Response: 983730068
 Conc: 24.86 ng/ml