

Data Path : Z:\pestpcbsrv\HPCHEM1\ECD_D\Data\PD111725\
 Data File : PD091222.D
 Signal(s) : Signal #1: ECD1A.ch Signal #2: ECD2B.ch
 Acq On : 17 Nov 2025 13:33
 Operator : AR\AJ
 Sample : PB170506BS
 Misc :
 ALS Vial : 6 Sample Multiplier: 1

Instrument :
 ECD_D
 ClientSampleId :

Integration File signal 1: autoint1.e
 Integration File signal 2: autoint2.e
 Quant Time: Nov 18 01:08:31 2025
 Quant Method : Z:\pestpcbsrv\HPCHEM1\ECD_D\Method\PD111525.M
 Quant Title : GC Extractables
 QLast Update : Sat Nov 15 04:46:13 2025
 Response via : Initial Calibration
 Integrator: ChemStation

Volume Inj. : 1 µl
 Signal #1 Phase : ZB-MR2 Signal #2 Phase: ZB-MR2
 Signal #1 Info : 30M x 0.32mm x0.5 Signal #2 Info : 30M x 0.32mm x 0.25µm

	Compound	RT#1	RT#2	Resp#1	Resp#2	ng/ml	ng/ml

System Monitoring Compounds							
1)	SA Tetrachlo...	3.552	2.873	73606622	874.3E6	21.344	23.867
28)	SA Decachlor...	9.077	8.063	118.2E6	978.9E6	23.733	24.735
Target Compounds							
2)	A alpha-BHC	4.002	3.385	390.5E6	3229.9E6	48.841	51.104
3)	MA gamma-BHC...	4.333	3.722	364.0E6	2950.8E6	48.710	51.033
4)	MA Heptachlor	4.931	4.074	355.4E6	2755.8E6	49.623	49.916
5)	MB Aldrin	5.273	4.359	351.8E6	2870.1E6	48.479	50.836
6)	B beta-BHC	4.521	4.018	135.7E6	1204.4E6	46.694	50.128
7)	B delta-BHC	4.769	4.255	366.8E6	2961.0E6	49.350	50.634
8)	Heptachlo...	5.693	4.864	311.7E6	2583.7E6	47.984	50.702
9)	A Endosulfan I	6.077	5.238	295.7E6	2426.6E6	48.134	50.711
10)	B gamma-Chl...	5.949	5.116	316.5E6	2809.1E6	48.686	51.423
11)	B alpha-Chl...	6.029	5.181	317.2E6	2679.6E6	46.082	51.204
12)	B 4,4'-DDE	6.199	5.366	283.5E6	2710.0E6	48.888	50.709
13)	MA Dieldrin	6.350	5.504	314.7E6	2754.3E6	48.685	50.714
14)	MA Endrin	6.577	5.781	221.5E6	2076.2E6	44.635	45.941
15)	B Endosulfa...	6.790	6.072	267.8E6	2368.3E6	48.179	50.734
16)	A 4,4'-DDD	6.710	5.921	236.5E6	2432.4E6	48.154	49.774
17)	MA 4,4'-DDT	7.025	6.175	205.5E6	2070.4E6	49.692	52.907
18)	B Endrin al...	6.919	6.251	206.3E6	1853.0E6	49.526	52.510
19)	B Endosulfa...	7.154	6.474	244.2E6	2267.4E6	47.471	50.571
20)	A Methoxychlor	7.499	6.745	101.7E6	985.2E6	46.794	49.136
21)	B Endrin ke...	7.635	6.983	280.2E6	2680.0E6	49.741	52.595
22)	Mirex	8.116	7.176	164.7E6	1650.4E6	46.308	49.802
23)	Chlordane-1	0.000	3.893	0	1289381	N.D.	0.750 #
24)	Chlordane-2	0.000	4.499f	0	21100160	N.D.	12.050 #
25)	Chlordane-3	5.949	5.116	316.5E6	2809.1E6	328.026	488.234 #
26)	Chlordane-4	6.029	5.181	317.2E6	2679.6E6	264.045	560.168 #
27)	Chlordane-5	0.000	6.072	0	2368.3E6	N.D.	1167.087 #

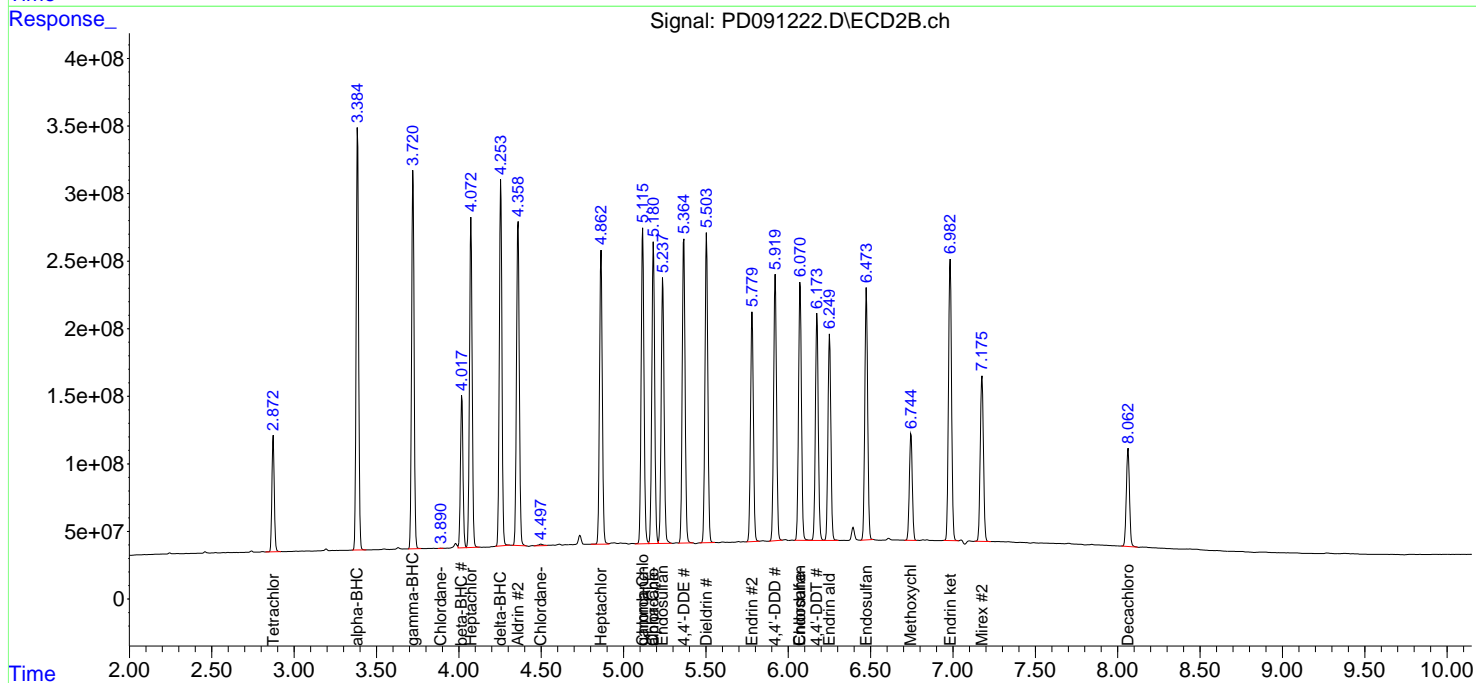
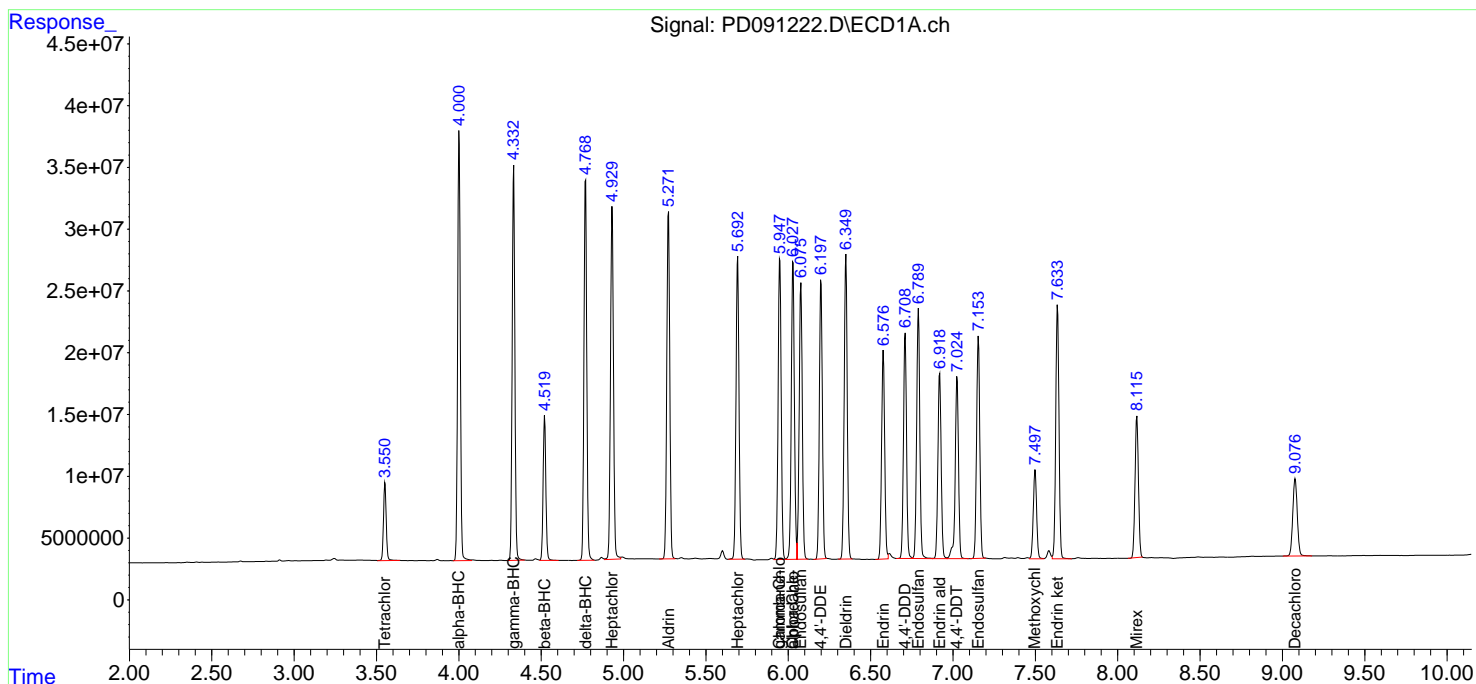
(f)=RT Delta > 1/2 Window (#)=Amounts differ by > 25% (m)=manual int.

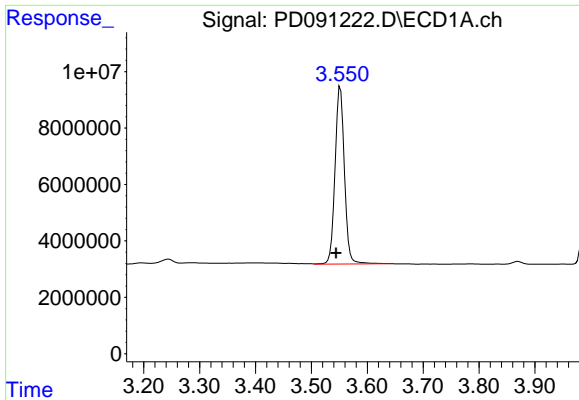
Data Path : Z:\pestpcbsrv\HPCHEM1\ECD_D\Data\PD111725\
 Data File : PD091222.D
 Signal(s) : Signal #1: ECD1A.ch Signal #2: ECD2B.ch
 Acq On : 17 Nov 2025 13:33
 Operator : AR\AJ
 Sample : PB170506BS
 Misc :
 ALS Vial : 6 Sample Multiplier: 1

Instrument :
 ECD_D
 ClientSampleId :

Integration File signal 1: autoint1.e
 Integration File signal 2: autoint2.e
 Quant Time: Nov 18 01:08:31 2025
 Quant Method : Z:\pestpcbsrv\HPCHEM1\ECD_D\Method\PD111525.M
 Quant Title : GC Extractables
 QLast Update : Sat Nov 15 04:46:13 2025
 Response via : Initial Calibration
 Integrator: ChemStation

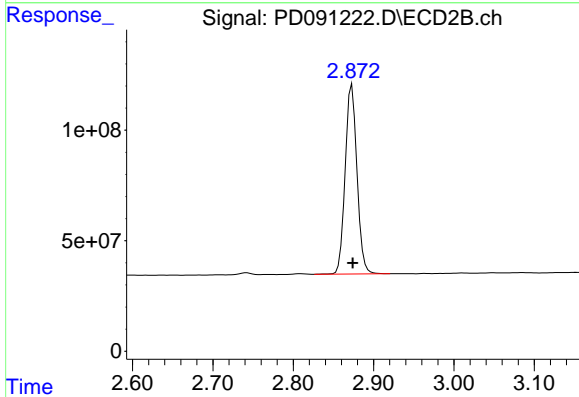
Volume Inj. : 1 µl
 Signal #1 Phase : ZB-MR1 Signal #2 Phase: ZB-MR2
 Signal #1 Info : 30M x 0.32mm x0.5 Signal #2 Info : 30M x 0.32mm x 0.25µm



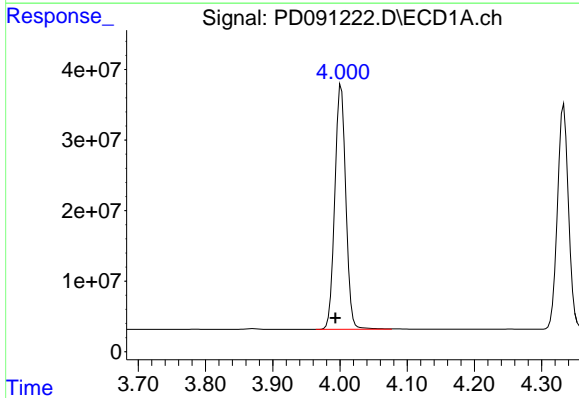


#1 Tetrachloro-m-xylene
 R.T.: 3.552 min
 Delta R.T.: 0.008 min
 Response: 73606622
 Conc: 21.34 ng/ml

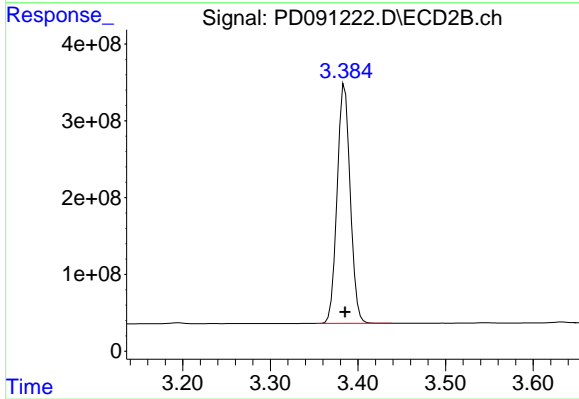
Instrument :
 ECD_D
 ClientSampleId :



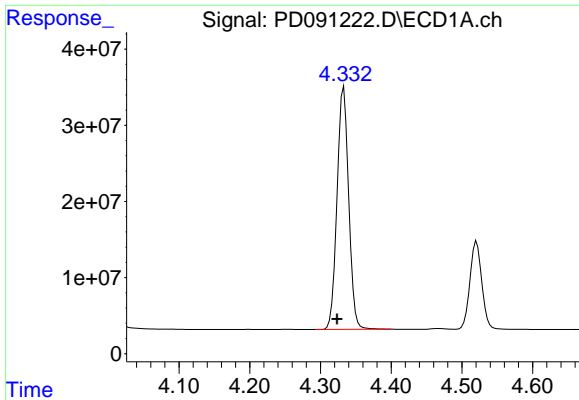
#1 Tetrachloro-m-xylene
 R.T.: 2.873 min
 Delta R.T.: -0.001 min
 Response: 874262336
 Conc: 23.87 ng/ml



#2 alpha-BHC
 R.T.: 4.002 min
 Delta R.T.: 0.009 min
 Response: 390505892
 Conc: 48.84 ng/ml



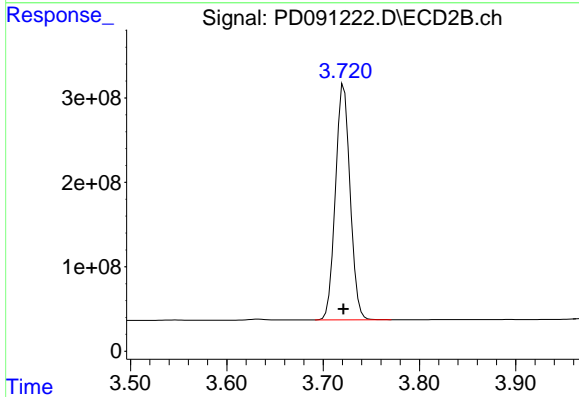
#2 alpha-BHC
 R.T.: 3.385 min
 Delta R.T.: 0.000 min
 Response: 3229913067
 Conc: 51.10 ng/ml



#3 gamma-BHC (Lindane)

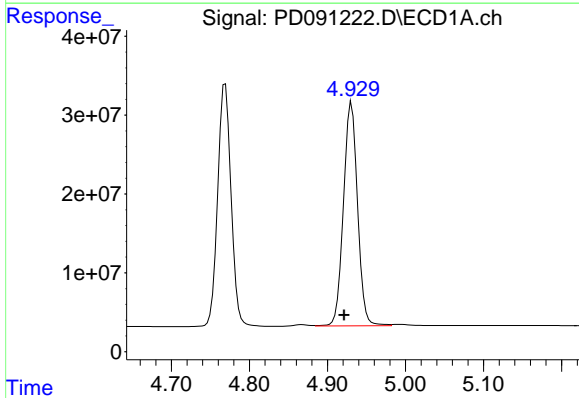
R.T.: 4.333 min
 Delta R.T.: 0.009 min
 Response: 36400243
 Conc: 48.71 ng/ml

Instrument :
 ECD_D
 ClientSampleId :



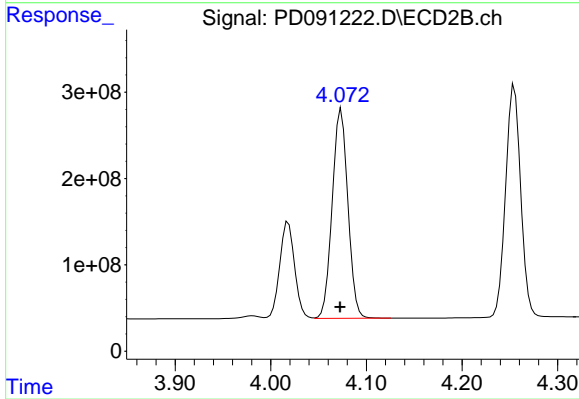
#3 gamma-BHC (Lindane)

R.T.: 3.722 min
 Delta R.T.: 0.000 min
 Response: 2950823937
 Conc: 51.03 ng/ml



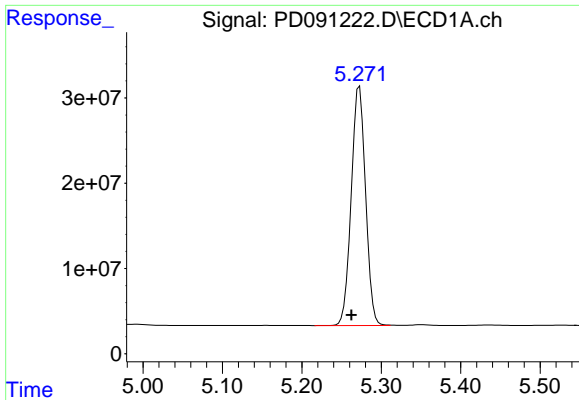
#4 Heptachlor

R.T.: 4.931 min
 Delta R.T.: 0.010 min
 Response: 355385565
 Conc: 49.62 ng/ml



#4 Heptachlor

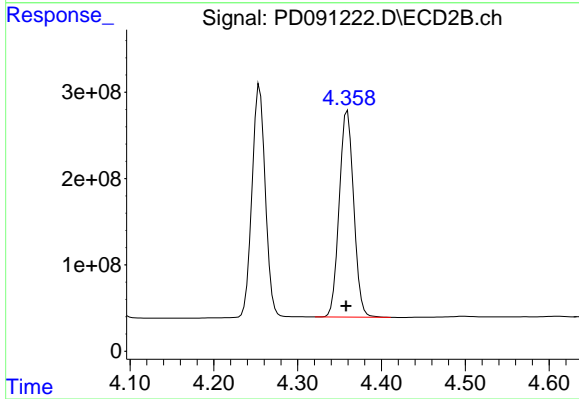
R.T.: 4.074 min
 Delta R.T.: 0.001 min
 Response: 2755837073
 Conc: 49.92 ng/ml



#5 Aldrin

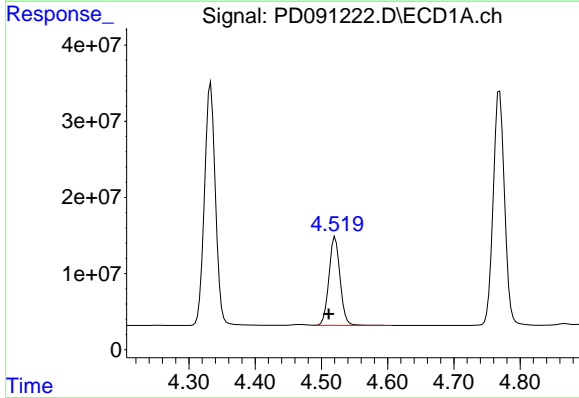
R.T.: 5.273 min
 Delta R.T.: 0.010 min
 Response: 351781884
 Conc: 48.48 ng/ml

Instrument :
 ECD_D
 ClientSampleId :



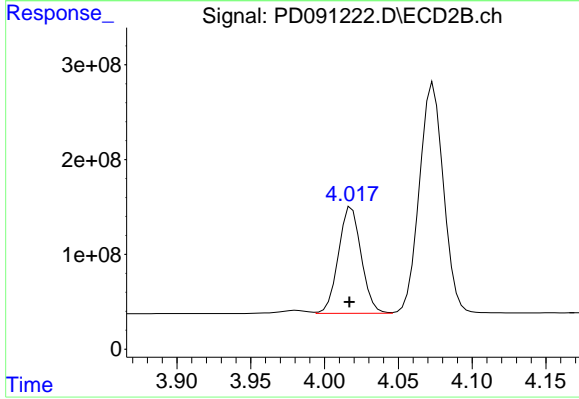
#5 Aldrin

R.T.: 4.359 min
 Delta R.T.: 0.002 min
 Response: 2870094530
 Conc: 50.84 ng/ml



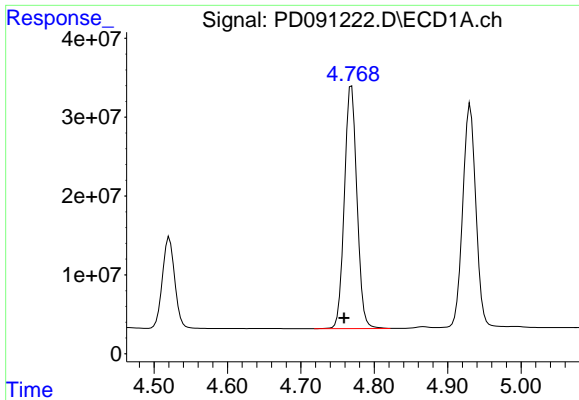
#6 beta-BHC

R.T.: 4.521 min
 Delta R.T.: 0.010 min
 Response: 135670306
 Conc: 46.69 ng/ml



#6 beta-BHC

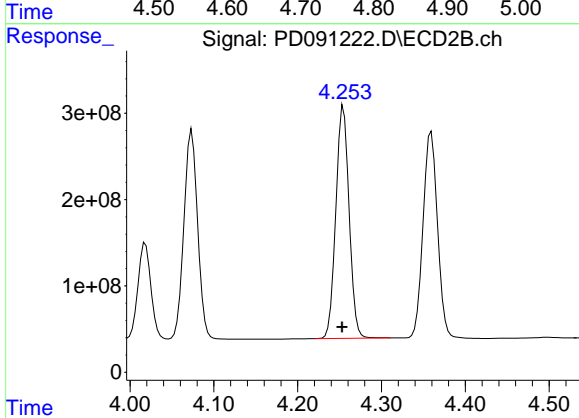
R.T.: 4.018 min
 Delta R.T.: 0.001 min
 Response: 1204426666
 Conc: 50.13 ng/ml



#7 delta-BHC

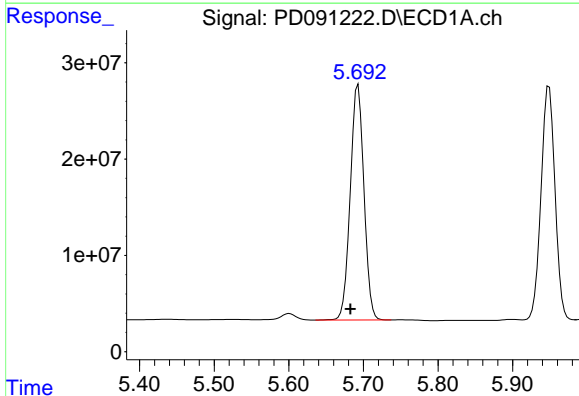
R.T.: 4.769 min
 Delta R.T.: 0.010 min
 Response: 366772207
 Conc: 49.35 ng/ml

Instrument :
 ECD_D
 ClientSampleId :



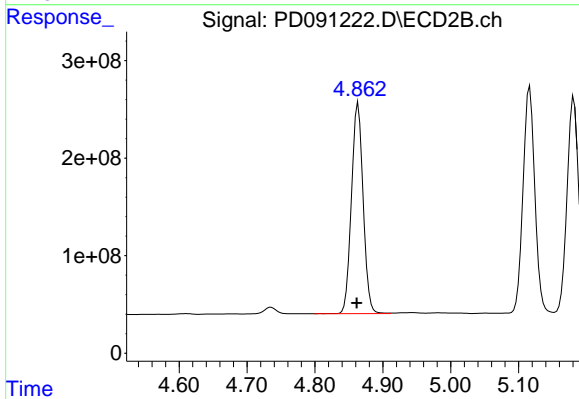
#7 delta-BHC

R.T.: 4.255 min
 Delta R.T.: 0.002 min
 Response: 2960952497
 Conc: 50.63 ng/ml



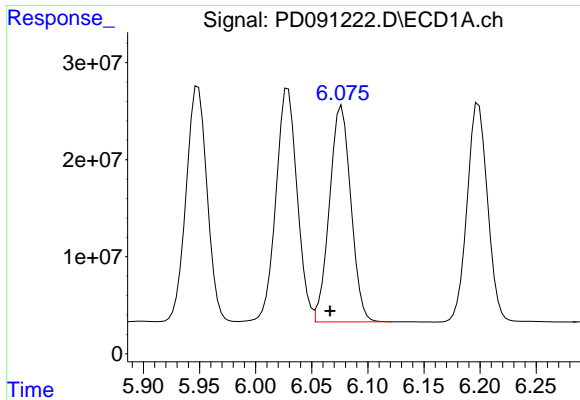
#8 Heptachlor epoxide

R.T.: 5.693 min
 Delta R.T.: 0.010 min
 Response: 311737470
 Conc: 47.98 ng/ml



#8 Heptachlor epoxide

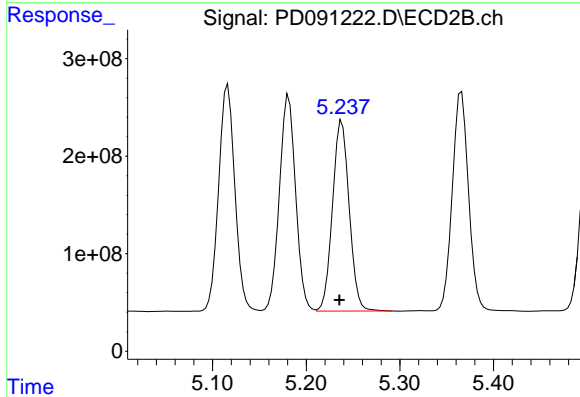
R.T.: 4.864 min
 Delta R.T.: 0.002 min
 Response: 2583697105
 Conc: 50.70 ng/ml



#9 Endosulfan I

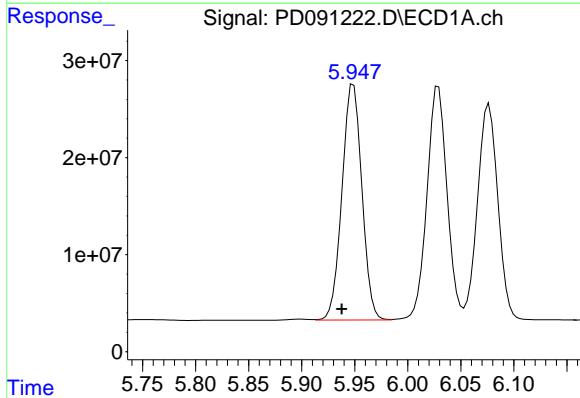
R.T.: 6.077 min
 Delta R.T.: 0.010 min
 Response: 295685393
 Conc: 48.13 ng/ml

Instrument :
 ECD_D
 ClientSampleId :



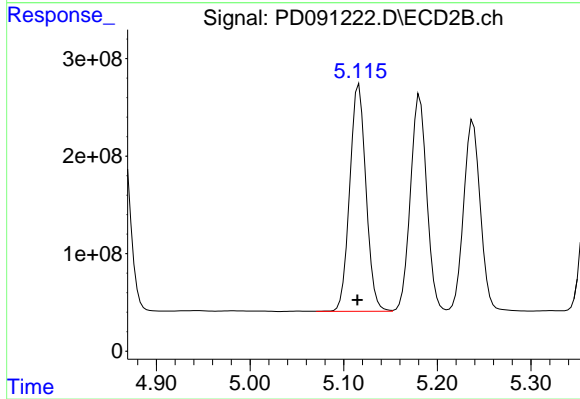
#9 Endosulfan I

R.T.: 5.238 min
 Delta R.T.: 0.003 min
 Response: 2426634738
 Conc: 50.71 ng/ml



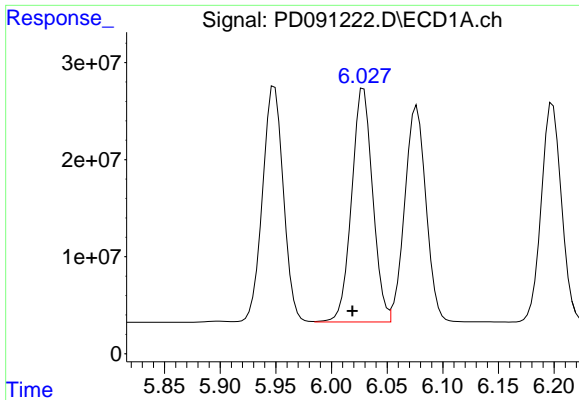
#10 gamma-Chlordane

R.T.: 5.949 min
 Delta R.T.: 0.011 min
 Response: 316494485
 Conc: 48.69 ng/ml



#10 gamma-Chlordane

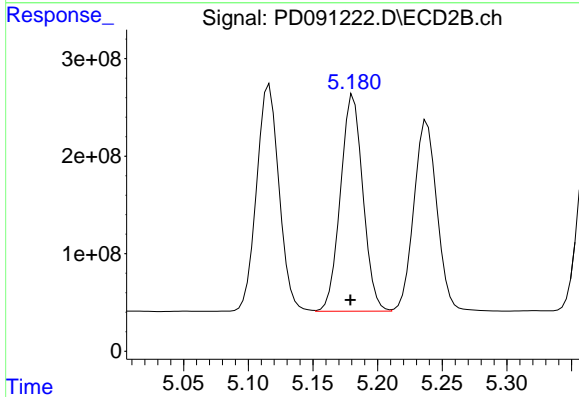
R.T.: 5.116 min
 Delta R.T.: 0.002 min
 Response: 2809091902
 Conc: 51.42 ng/ml



#11 alpha-Chlordane

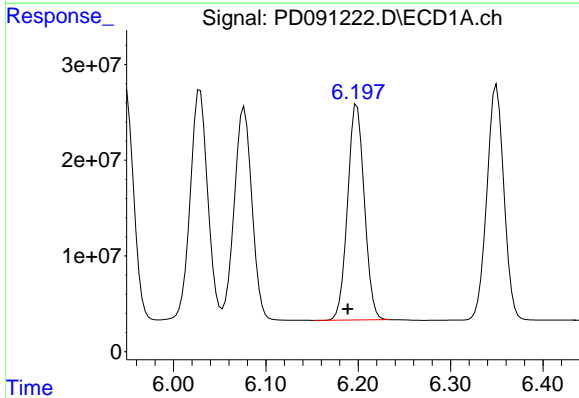
R.T.: 6.029 min
 Delta R.T.: 0.010 min
 Response: 317171780
 Conc: 46.08 ng/ml

Instrument :
 ECD_D
 ClientSampleId :



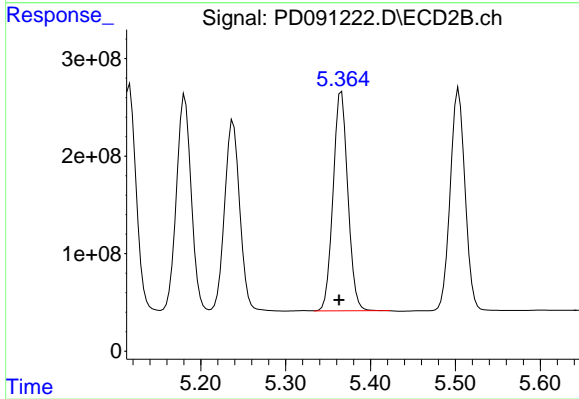
#11 alpha-Chlordane

R.T.: 5.181 min
 Delta R.T.: 0.002 min
 Response: 2679599581
 Conc: 51.20 ng/ml



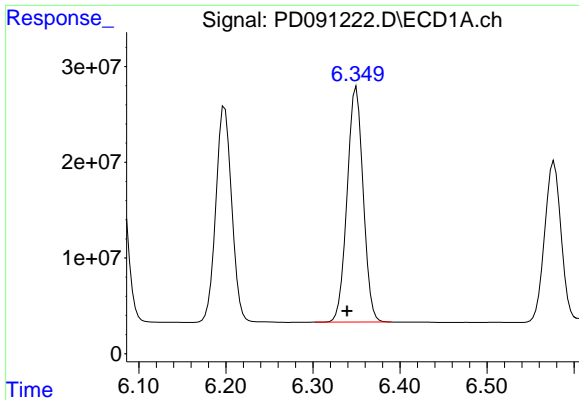
#12 4,4'-DDE

R.T.: 6.199 min
 Delta R.T.: 0.010 min
 Response: 283523661
 Conc: 48.89 ng/ml



#12 4,4'-DDE

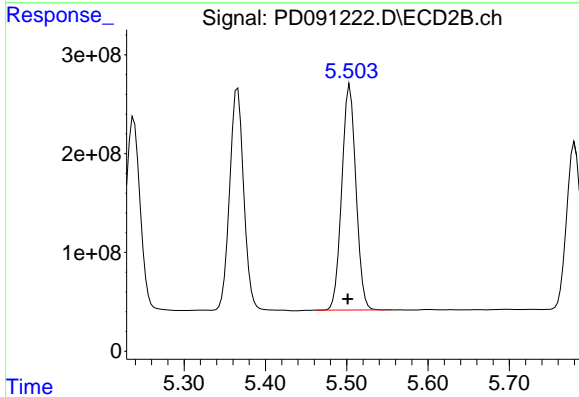
R.T.: 5.366 min
 Delta R.T.: 0.003 min
 Response: 2709985486
 Conc: 50.71 ng/ml



#13 Dieldrin

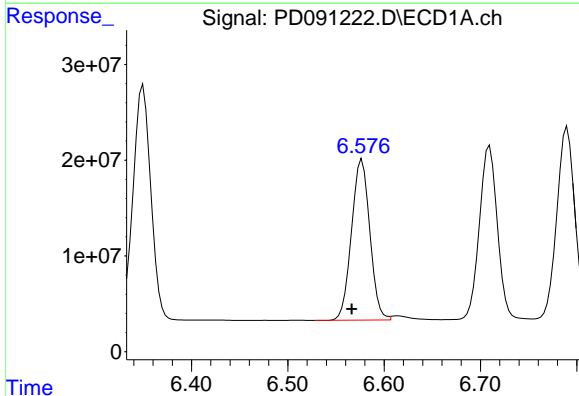
R.T.: 6.350 min
Delta R.T.: 0.011 min
Response: 314745882
Conc: 48.69 ng/ml

Instrument :
ECD_D
ClientSampleId :



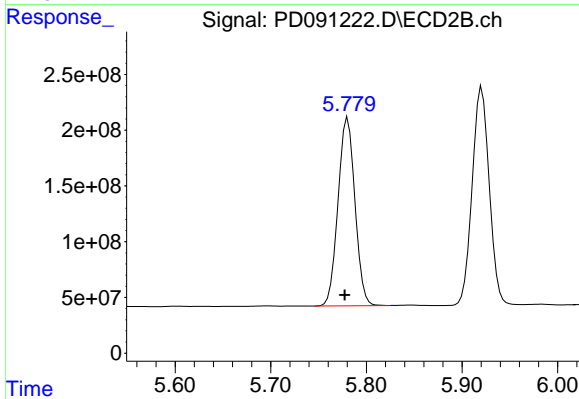
#13 Dieldrin

R.T.: 5.504 min
Delta R.T.: 0.003 min
Response: 2754315296
Conc: 50.71 ng/ml



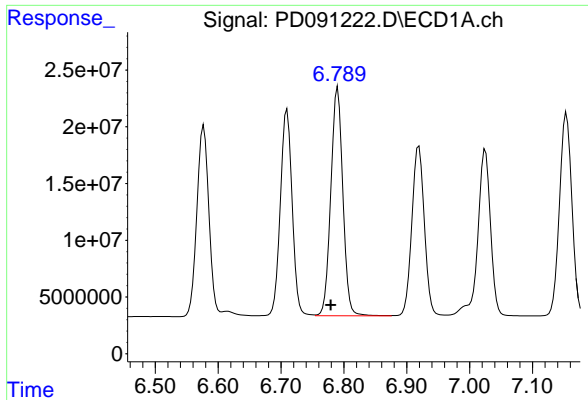
#14 Endrin

R.T.: 6.577 min
Delta R.T.: 0.011 min
Response: 221546147
Conc: 44.64 ng/ml



#14 Endrin

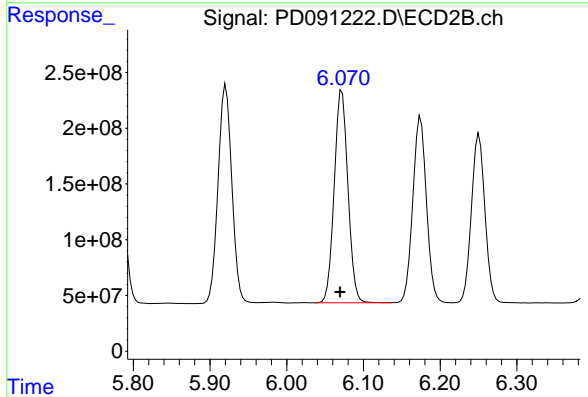
R.T.: 5.781 min
Delta R.T.: 0.003 min
Response: 2076197587
Conc: 45.94 ng/ml



#15 Endosulfan II

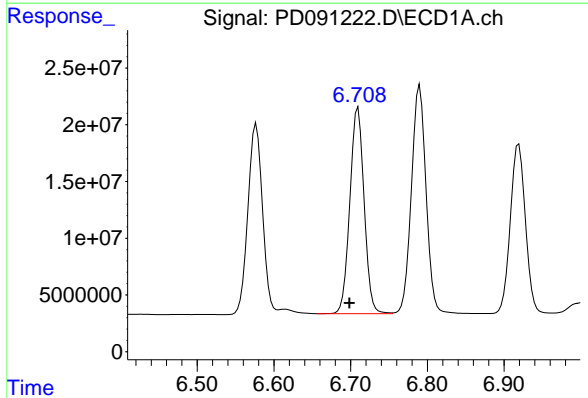
R.T.: 6.790 min
 Delta R.T.: 0.011 min
 Response: 267841312
 Conc: 48.18 ng/ml

Instrument :
 ECD_D
 ClientSampleId :



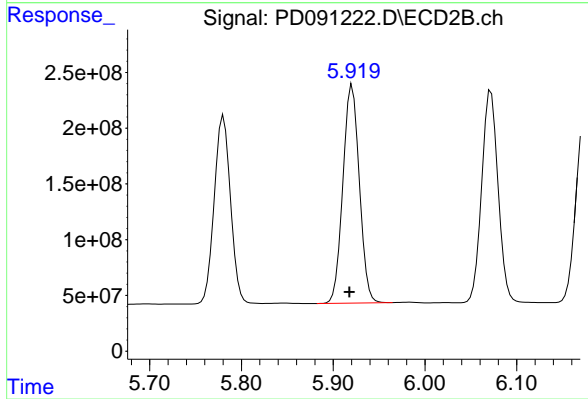
#15 Endosulfan II

R.T.: 6.072 min
 Delta R.T.: 0.002 min
 Response: 2368256183
 Conc: 50.73 ng/ml



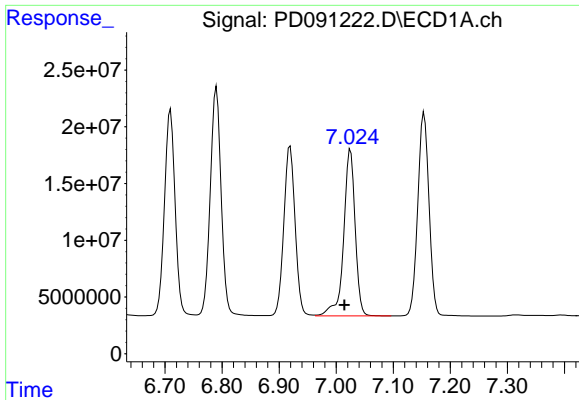
#16 4,4'-DDD

R.T.: 6.710 min
 Delta R.T.: 0.011 min
 Response: 236506926
 Conc: 48.15 ng/ml



#16 4,4'-DDD

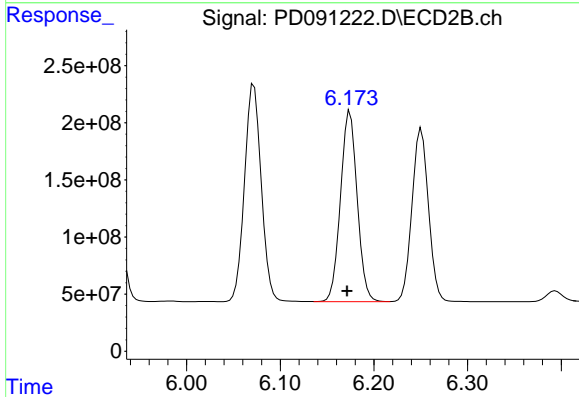
R.T.: 5.921 min
 Delta R.T.: 0.003 min
 Response: 2432363890
 Conc: 49.77 ng/ml



#17 4,4'-DDT

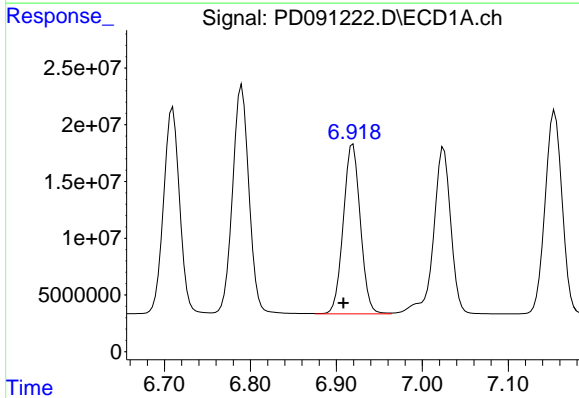
R.T.: 7.025 min
 Delta R.T.: 0.011 min
 Response: 205500602
 Conc: 49.69 ng/ml

Instrument :
 ECD_D
 ClientSampleId :



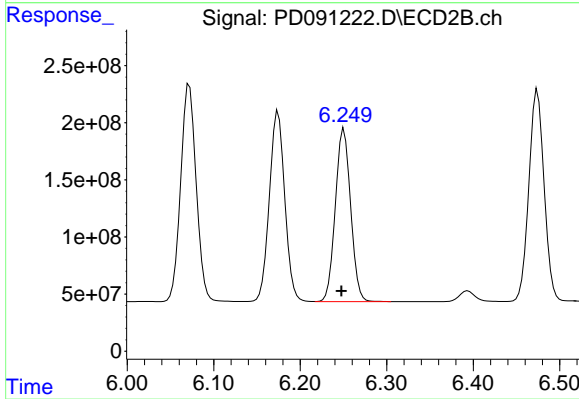
#17 4,4'-DDT

R.T.: 6.175 min
 Delta R.T.: 0.003 min
 Response: 2070390828
 Conc: 52.91 ng/ml



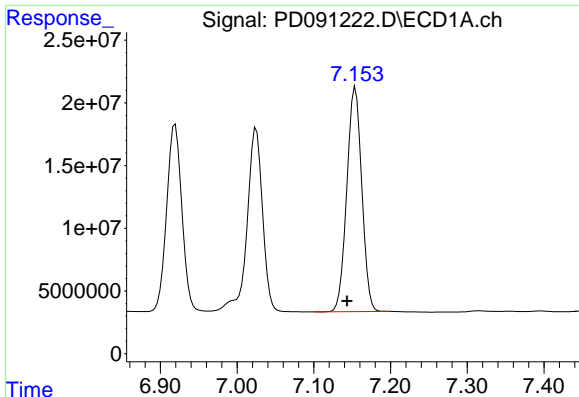
#18 Endrin aldehyde

R.T.: 6.919 min
 Delta R.T.: 0.011 min
 Response: 206328700
 Conc: 49.53 ng/ml



#18 Endrin aldehyde

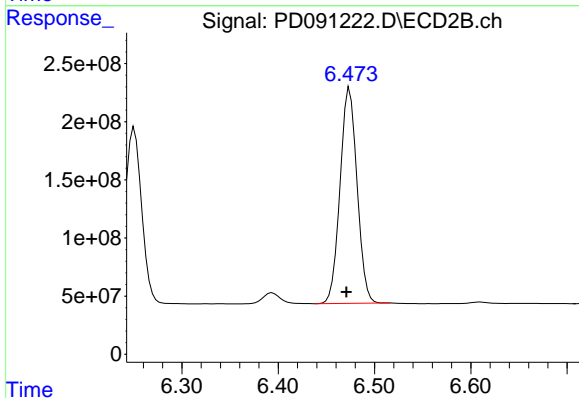
R.T.: 6.251 min
 Delta R.T.: 0.003 min
 Response: 1853012251
 Conc: 52.51 ng/ml



#19 Endosulfan Sulfate

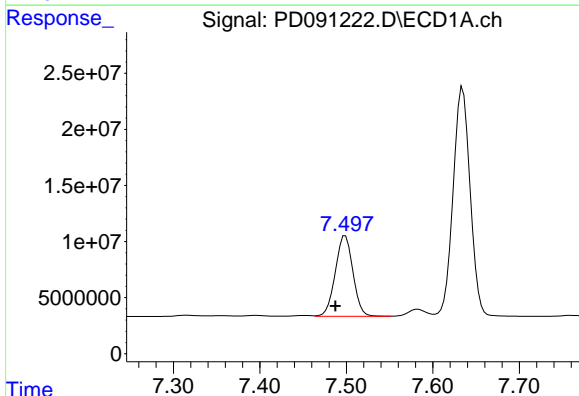
R.T.: 7.154 min
 Delta R.T.: 0.011 min
 Response: 244229691
 Conc: 47.47 ng/ml

Instrument :
 ECD_D
 ClientSampleId :



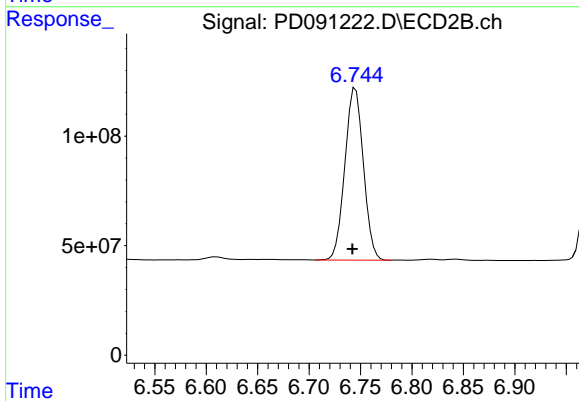
#19 Endosulfan Sulfate

R.T.: 6.474 min
 Delta R.T.: 0.003 min
 Response: 2267354751
 Conc: 50.57 ng/ml



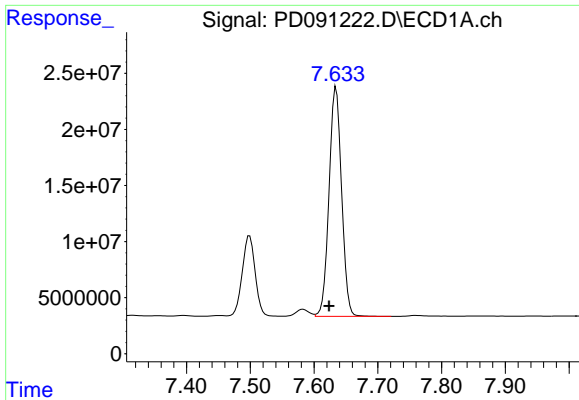
#20 Methoxychlor

R.T.: 7.499 min
 Delta R.T.: 0.012 min
 Response: 101744862
 Conc: 46.79 ng/ml



#20 Methoxychlor

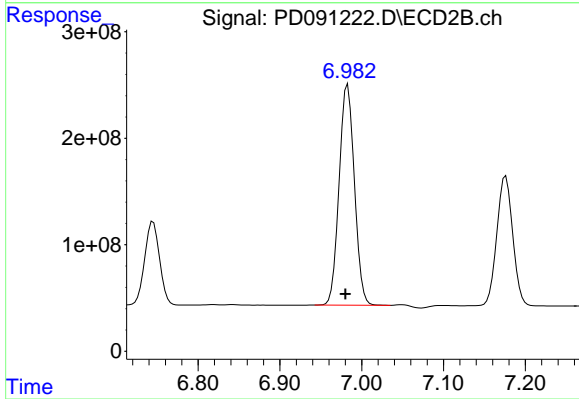
R.T.: 6.745 min
 Delta R.T.: 0.003 min
 Response: 985242772
 Conc: 49.14 ng/ml



#21 Endrin ketone

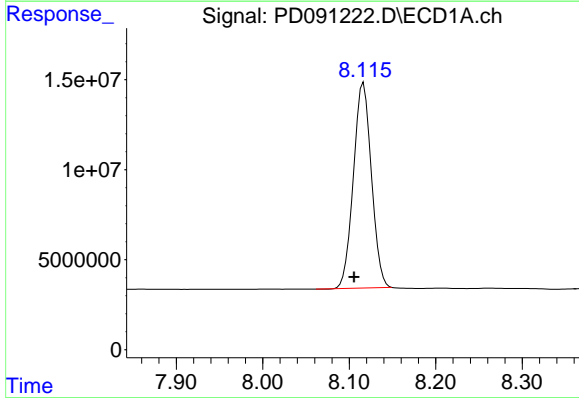
R.T.: 7.635 min
 Delta R.T.: 0.011 min
 Response: 280217440
 Conc: 49.74 ng/ml

Instrument :
 ECD_D
 ClientSampleId :



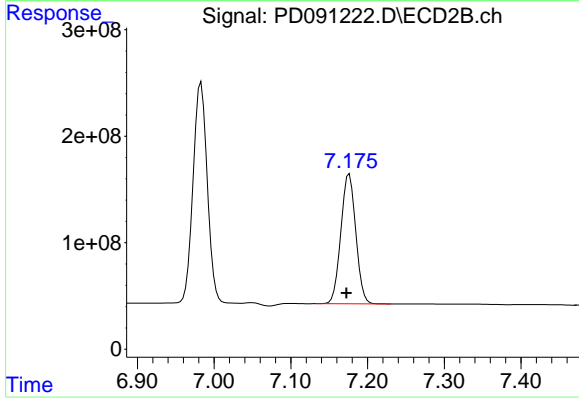
#21 Endrin ketone

R.T.: 6.983 min
 Delta R.T.: 0.003 min
 Response: 2680042022
 Conc: 52.60 ng/ml



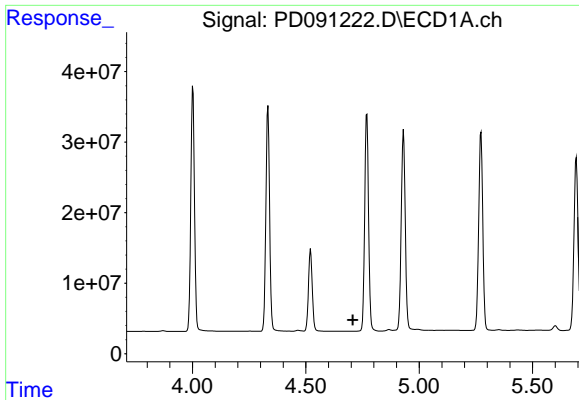
#22 Mirex

R.T.: 8.116 min
 Delta R.T.: 0.011 min
 Response: 164720715
 Conc: 46.31 ng/ml



#22 Mirex

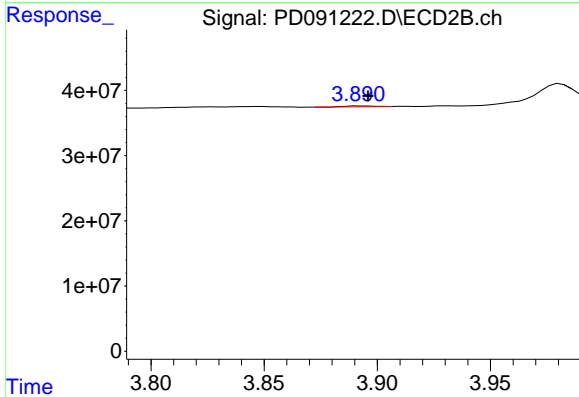
R.T.: 7.176 min
 Delta R.T.: 0.004 min
 Response: 1650428913
 Conc: 49.80 ng/ml



#23 Chlordane-1

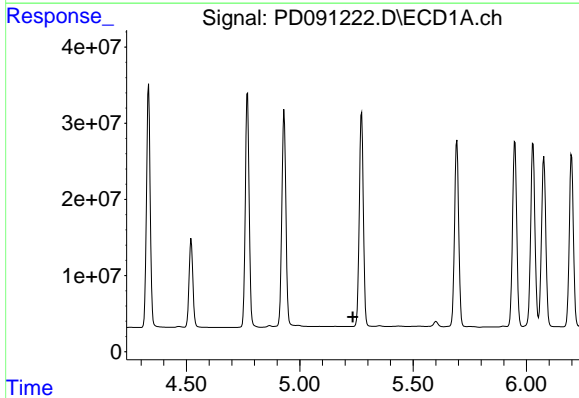
R.T.: 0.000 min
 Exp R.T. : 4.707 min
 Response: 0
 Conc: N.D.

Instrument :
 ECD_D
 ClientSampleId :



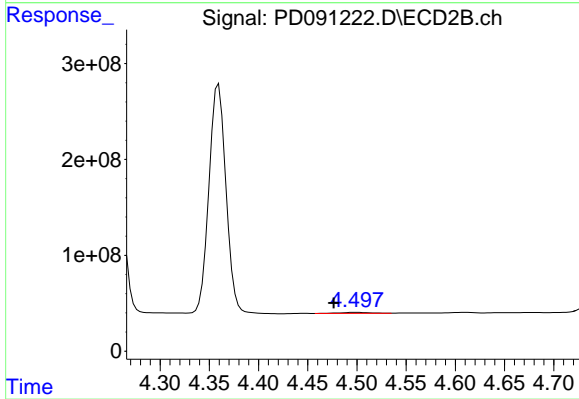
#23 Chlordane-1

R.T.: 3.893 min
 Delta R.T.: -0.003 min
 Response: 1289381
 Conc: 0.75 ng/ml



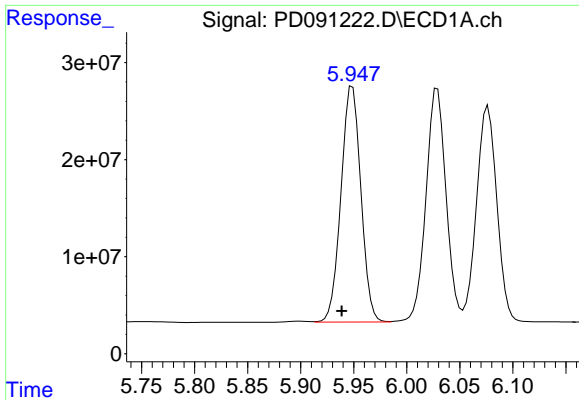
#24 Chlordane-2

R.T.: 0.000 min
 Exp R.T. : 5.234 min
 Response: 0
 Conc: N.D.



#24 Chlordane-2

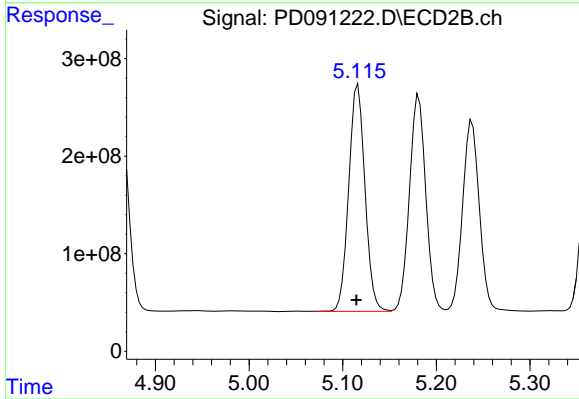
R.T.: 4.499 min
 Delta R.T.: 0.022 min
 Response: 21100160
 Conc: 12.05 ng/ml



#25 Chlordane-3

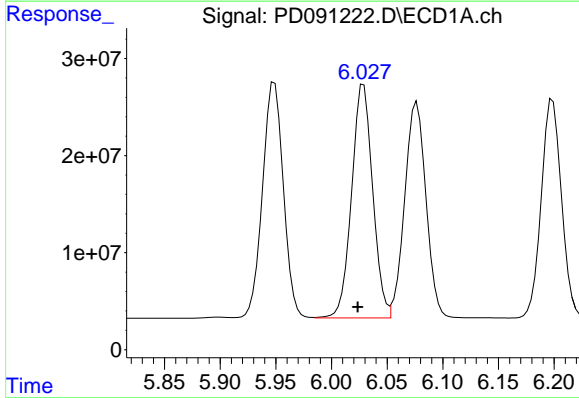
R.T.: 5.949 min
Delta R.T.: 0.010 min
Response: 316494485
Conc: 328.03 ng/ml

Instrument :
ECD_D
ClientSampleId :



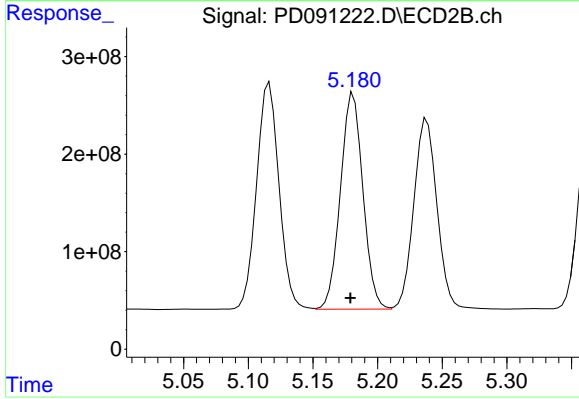
#25 Chlordane-3

R.T.: 5.116 min
Delta R.T.: 0.002 min
Response: 2809091902
Conc: 488.23 ng/ml



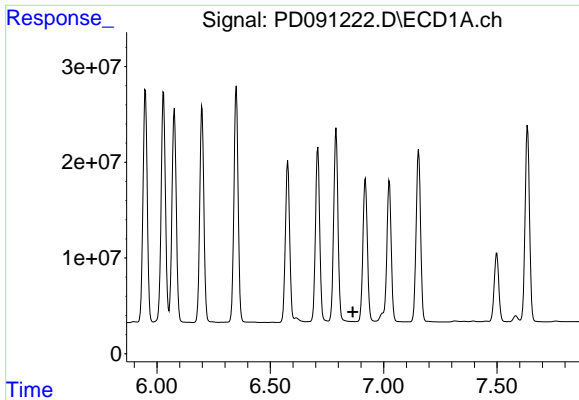
#26 Chlordane-4

R.T.: 6.029 min
Delta R.T.: 0.005 min
Response: 317171780
Conc: 264.04 ng/ml



#26 Chlordane-4

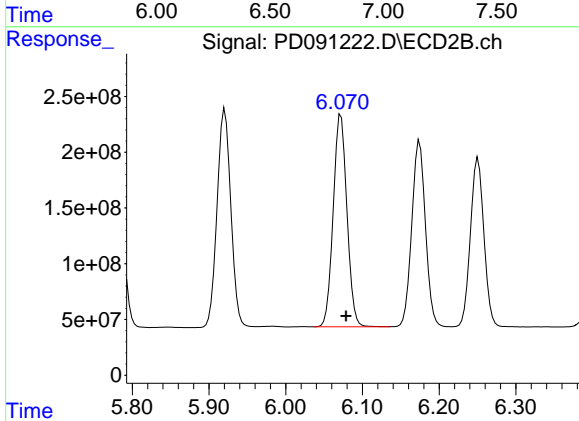
R.T.: 5.181 min
Delta R.T.: 0.002 min
Response: 2679599581
Conc: 560.17 ng/ml



#27 Chlordane-5

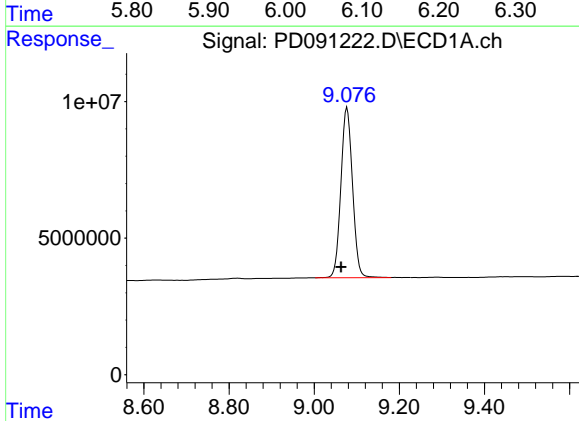
R.T.: 0.000 min
 Exp R.T.: 6.863 min
 Response: 0
 Conc: N.D.

Instrument :
 ECD_D
 ClientSampleId :



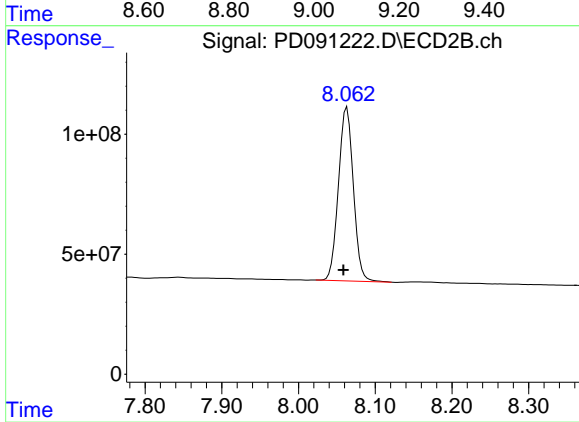
#27 Chlordane-5

R.T.: 6.072 min
 Delta R.T.: -0.007 min
 Response: 2368256183
 Conc: 1167.09 ng/ml



#28 Decachlorobiphenyl

R.T.: 9.077 min
 Delta R.T.: 0.014 min
 Response: 118236352
 Conc: 23.73 ng/ml



#28 Decachlorobiphenyl

R.T.: 8.063 min
 Delta R.T.: 0.005 min
 Response: 978877643
 Conc: 24.73 ng/ml