

Data Path : Z:\pestpcbsrv\HPCHEM1\ECD_D\Data\PD111725\
 Data File : PD091224.D
 Signal(s) : Signal #1: ECD1A.ch Signal #2: ECD2B.ch
 Acq On : 17 Nov 2025 14:00
 Operator : AR\AJ
 Sample : PB170575BS
 Misc :
 ALS Vial : 8 Sample Multiplier: 1

Instrument :
 ECD_D
 ClientSampleId :

Integration File signal 1: autoint1.e
 Integration File signal 2: autoint2.e
 Quant Time: Nov 18 01:09:00 2025
 Quant Method : Z:\pestpcbsrv\HPCHEM1\ECD_D\Method\PD111525.M
 Quant Title : GC Extractables
 QLast Update : Sat Nov 15 04:46:13 2025
 Response via : Initial Calibration
 Integrator: ChemStation

Volume Inj. : 1 µl
 Signal #1 Phase : ZB-MR2 Signal #2 Phase: ZB-MR2
 Signal #1 Info : 30M x 0.32mm x0.5 Signal #2 Info : 30M x 0.32mm x 0.25µm

	Compound	RT#1	RT#2	Resp#1	Resp#2	ng/ml	ng/ml

System Monitoring Compounds							
1)	SA Tetrachlo...	3.544	2.874	75425658	879.1E6	21.871	24.000
28)	SA Decachlor...	9.067	8.060	117.6E6	988.2E6	23.614	24.971
Target Compounds							
2)	A alpha-BHC	3.994	3.385	390.7E6	3248.1E6	48.869	51.392
3)	MA gamma-BHC...	4.324	3.721	365.6E6	2972.1E6	48.919	51.401
4)	MA Heptachlor	4.922	4.073	350.0E6	2808.8E6	48.865	50.876
5)	MB Aldrin	5.263	4.358	352.9E6	2920.3E6	48.627	51.724
6)	B beta-BHC	4.512	4.017	136.3E6	1221.9E6	46.908	50.856
7)	B delta-BHC	4.760	4.253	367.2E6	2995.2E6	49.401	51.221
8)	Heptachlo...	5.684	4.862	312.4E6	2607.4E6	48.085	51.167
9)	A Endosulfan I	6.068	5.236	296.0E6	2462.6E6	48.178	51.463
10)	B gamma-Chl...	5.939	5.115	317.7E6	2838.5E6	48.866	51.961
11)	B alpha-Chl...	6.020	5.179	316.9E6	2711.4E6	46.041	51.812
12)	B 4,4'-DDE	6.189	5.364	284.5E6	2744.8E6	49.059	51.360
13)	MA Dieldrin	6.340	5.502	316.0E6	2783.2E6	48.879	51.245
14)	MA Endrin	6.568	5.778	223.9E6	2121.1E6	45.101	46.935
15)	B Endosulfa...	6.781	6.070	268.3E6	2387.5E6	48.268	51.146
16)	A 4,4'-DDD	6.700	5.918	236.4E6	2450.3E6	48.133	50.141
17)	MA 4,4'-DDT	7.016	6.172	205.3E6	2088.7E6	49.644	53.375
18)	B Endrin al...	6.910	6.248	205.9E6	1865.6E6	49.420	52.865
19)	B Endosulfa...	7.144	6.472	246.0E6	2285.8E6	47.810	50.982
20)	A Methoxychlor	7.489	6.742	101.7E6	1000.8E6	46.754	49.911
21)	B Endrin ke...	7.625	6.981	279.7E6	2704.1E6	49.652	53.068
22)	Mirex	8.108	7.173	167.0E6	1669.4E6	46.962	50.373
23)	Chlordane-1	0.000	3.899	0	849631	N.D.	0.494 #
24)	Chlordane-2	5.263f	4.496	352.9E6	20218954	1428.987	11.547 #
25)	Chlordane-3	5.939	5.115	317.7E6	2838.5E6	329.240	493.340 #
26)	Chlordane-4	6.020	5.179	316.9E6	2711.4E6	263.809	566.810 #
27)	Chlordane-5	0.000	6.070	0	2387.5E6	N.D.	1176.559 #

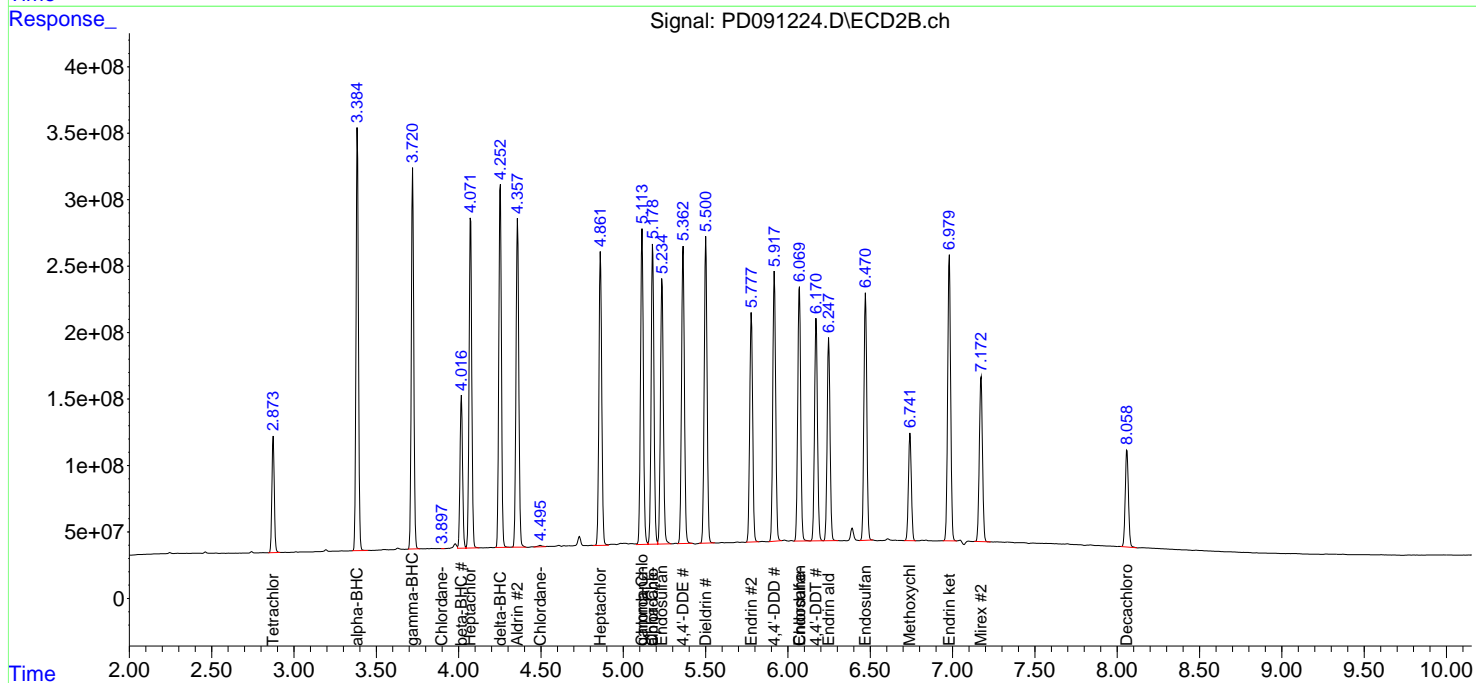
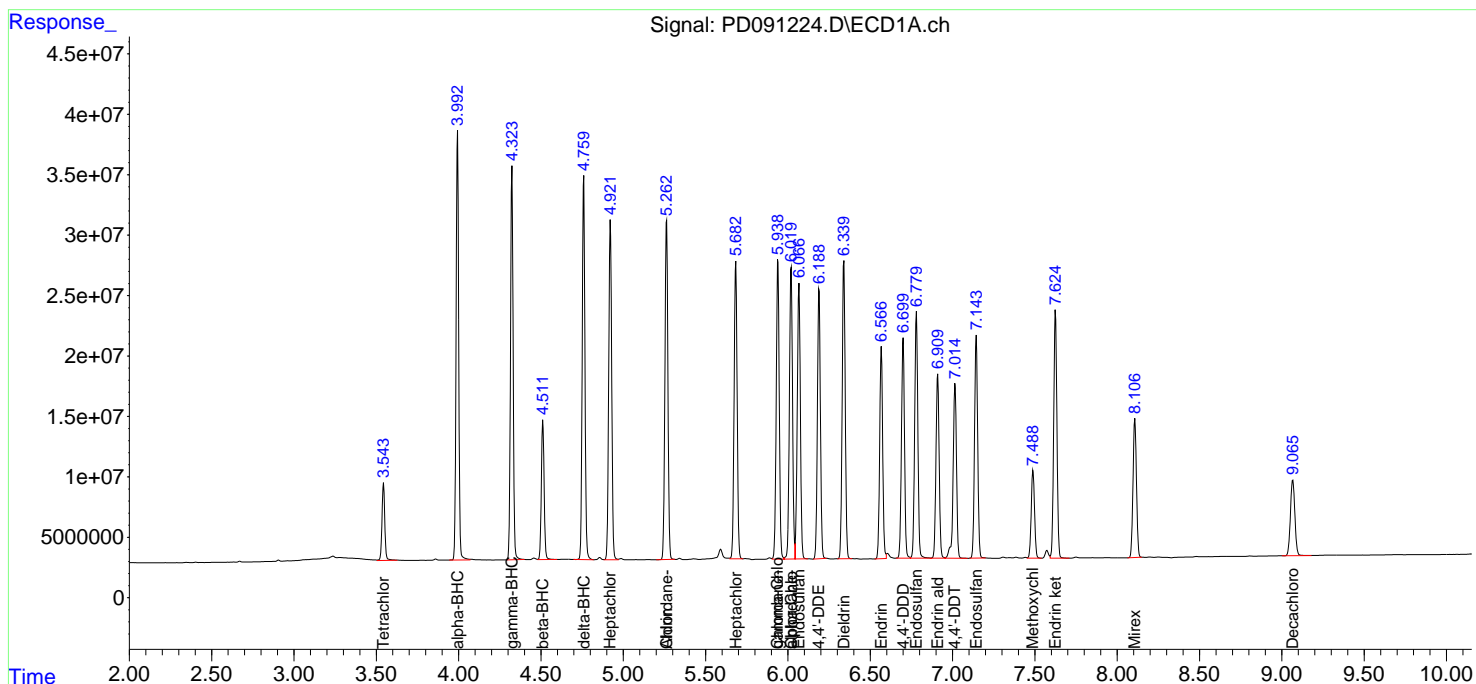
(f)=RT Delta > 1/2 Window (#)=Amounts differ by > 25% (m)=manual int.

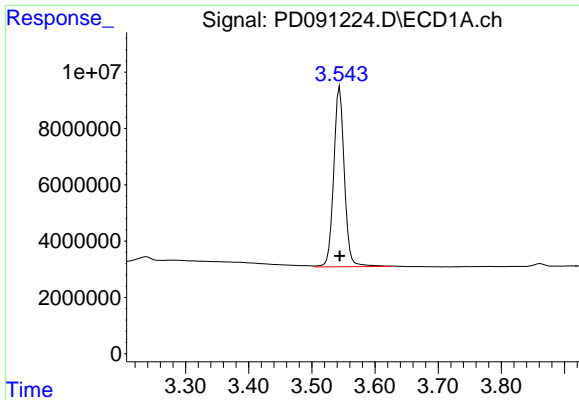
Data Path : Z:\pestpcbsrv\HPCHEM1\ECD_D\Data\PD111725\
 Data File : PD091224.D
 Signal(s) : Signal #1: ECD1A.ch Signal #2: ECD2B.ch
 Acq On : 17 Nov 2025 14:00
 Operator : AR\AJ
 Sample : PB170575BS
 Misc :
 ALS Vial : 8 Sample Multiplier: 1

Instrument :
 ECD_D
 ClientSampleId :

Integration File signal 1: autoint1.e
 Integration File signal 2: autoint2.e
 Quant Time: Nov 18 01:09:00 2025
 Quant Method : Z:\pestpcbsrv\HPCHEM1\ECD_D\Method\PD111525.M
 Quant Title : GC Extractables
 QLast Update : Sat Nov 15 04:46:13 2025
 Response via : Initial Calibration
 Integrator: ChemStation

Volume Inj. : 1 µl
 Signal #1 Phase : ZB-MR1 Signal #2 Phase: ZB-MR2
 Signal #1 Info : 30M x 0.32mm x0.5 Signal #2 Info : 30M x 0.32mm x 0.25µm

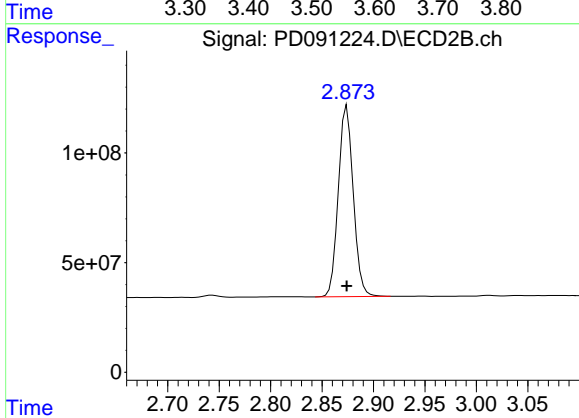




#1 Tetrachloro-m-xylene

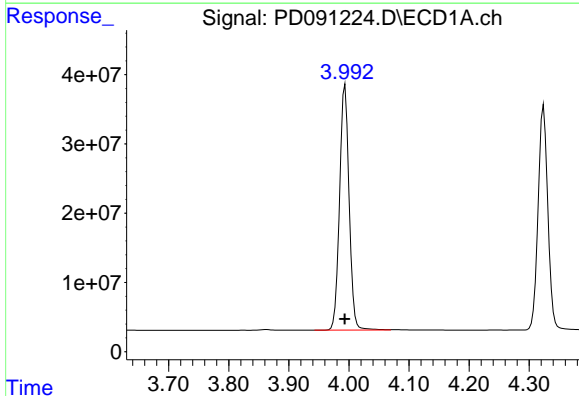
R.T.: 3.544 min
 Delta R.T.: 0.000 min
 Response: 75425658
 Conc: 21.87 ng/ml

Instrument :
 ECD_D
 ClientSampleId :



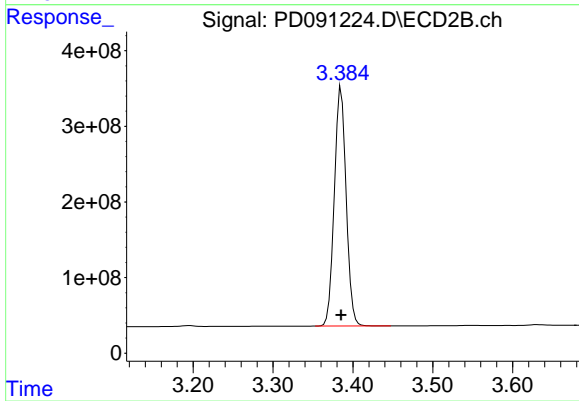
#1 Tetrachloro-m-xylene

R.T.: 2.874 min
 Delta R.T.: 0.000 min
 Response: 879106987
 Conc: 24.00 ng/ml



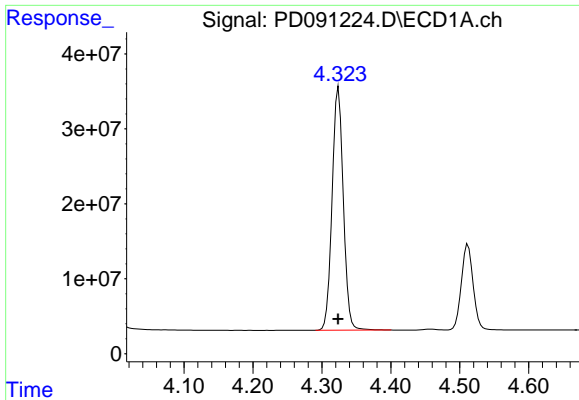
#2 alpha-BHC

R.T.: 3.994 min
 Delta R.T.: 0.000 min
 Response: 390730042
 Conc: 48.87 ng/ml



#2 alpha-BHC

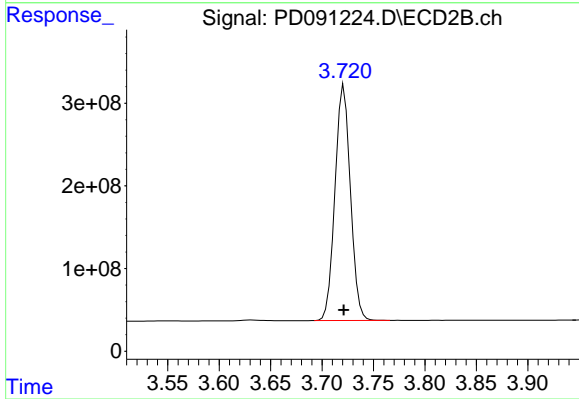
R.T.: 3.385 min
 Delta R.T.: 0.000 min
 Response: 3248126936
 Conc: 51.39 ng/ml



#3 gamma-BHC (Lindane)

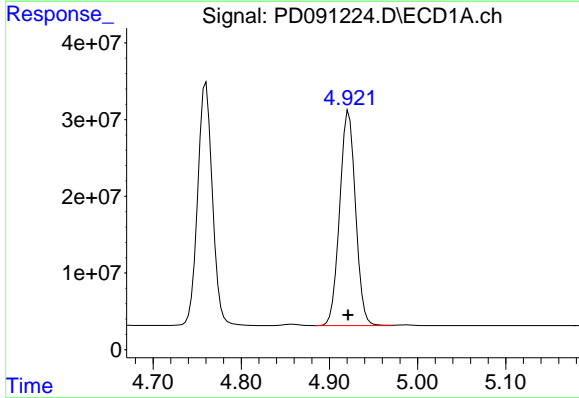
R.T.: 4.324 min
 Delta R.T.: 0.000 min
 Response: 365566335
 Conc: 48.92 ng/ml

Instrument :
 ECD_D
 ClientSampleId :



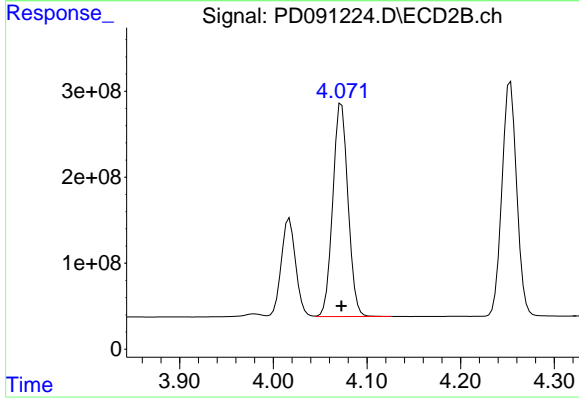
#3 gamma-BHC (Lindane)

R.T.: 3.721 min
 Delta R.T.: 0.000 min
 Response: 2972055772
 Conc: 51.40 ng/ml



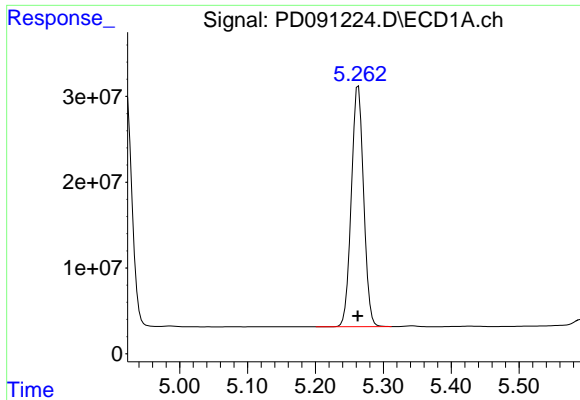
#4 Heptachlor

R.T.: 4.922 min
 Delta R.T.: 0.001 min
 Response: 349959366
 Conc: 48.87 ng/ml



#4 Heptachlor

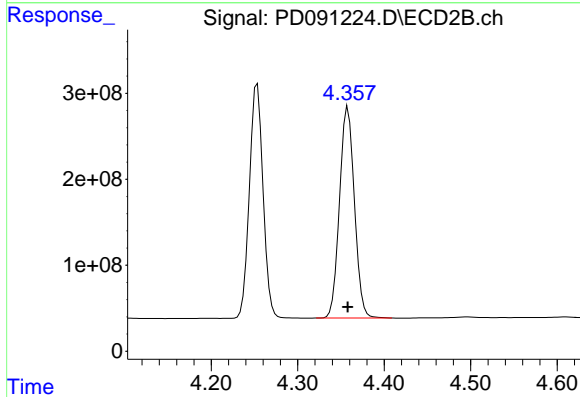
R.T.: 4.073 min
 Delta R.T.: 0.000 min
 Response: 2808826014
 Conc: 50.88 ng/ml



#5 Aldrin

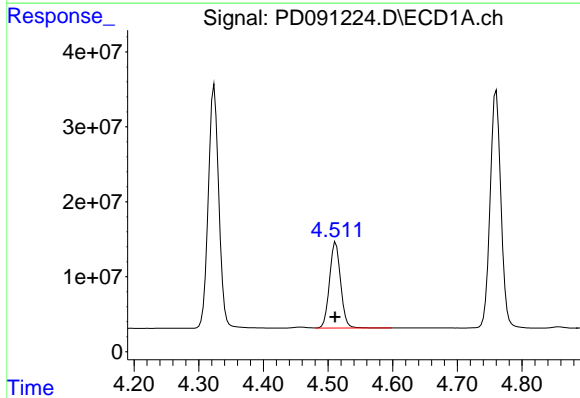
R.T.: 5.263 min
 Delta R.T.: 0.000 min
 Response: 352859820
 Conc: 48.63 ng/ml

Instrument :
 ECD_D
 ClientSampleId :



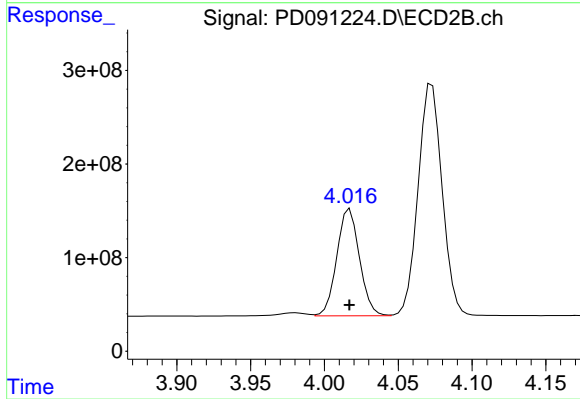
#5 Aldrin

R.T.: 4.358 min
 Delta R.T.: 0.000 min
 Response: 2920257852
 Conc: 51.72 ng/ml



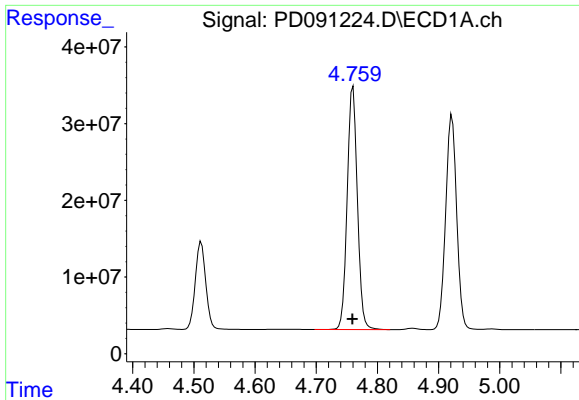
#6 beta-BHC

R.T.: 4.512 min
 Delta R.T.: 0.000 min
 Response: 136292499
 Conc: 46.91 ng/ml



#6 beta-BHC

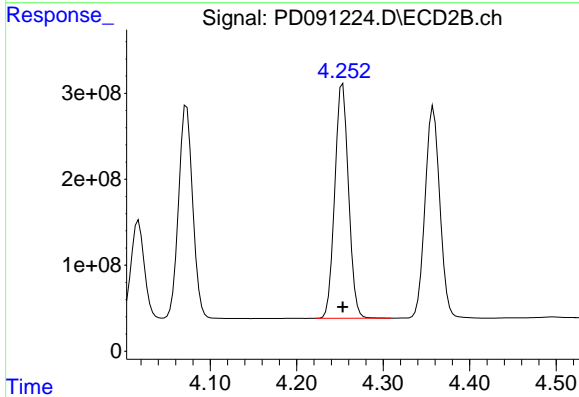
R.T.: 4.017 min
 Delta R.T.: 0.000 min
 Response: 1221918294
 Conc: 50.86 ng/ml



#7 delta-BHC

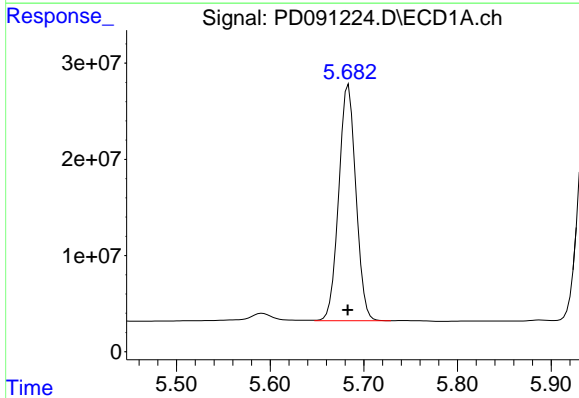
R.T.: 4.760 min
 Delta R.T.: 0.000 min
 Response: 367155401
 Conc: 49.40 ng/ml

Instrument :
 ECD_D
 ClientSampleId :



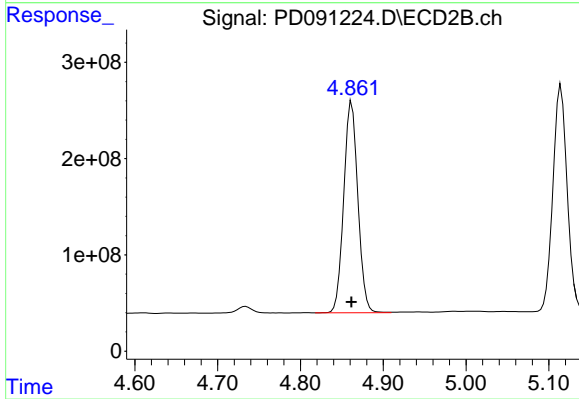
#7 delta-BHC

R.T.: 4.253 min
 Delta R.T.: 0.000 min
 Response: 2995249326
 Conc: 51.22 ng/ml



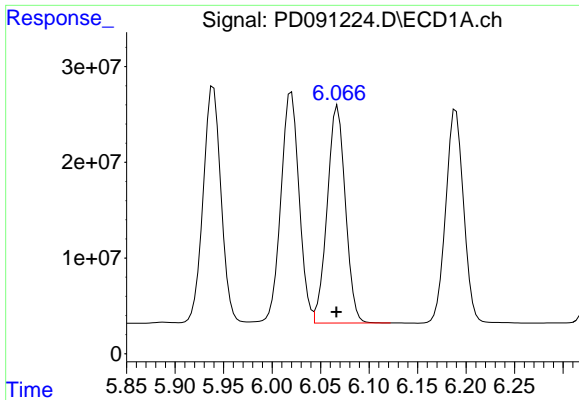
#8 Heptachlor epoxide

R.T.: 5.684 min
 Delta R.T.: 0.001 min
 Response: 312393547
 Conc: 48.08 ng/ml



#8 Heptachlor epoxide

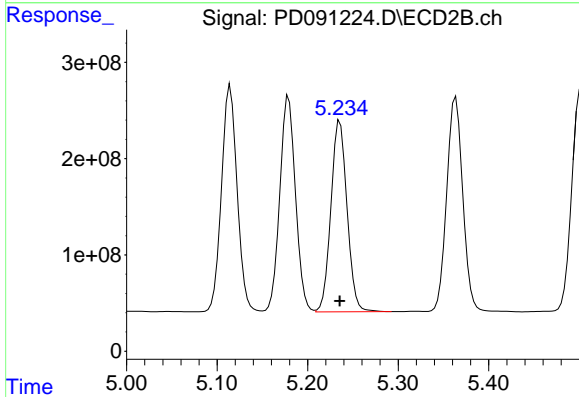
R.T.: 4.862 min
 Delta R.T.: 0.000 min
 Response: 2607401377
 Conc: 51.17 ng/ml



#9 Endosulfan I

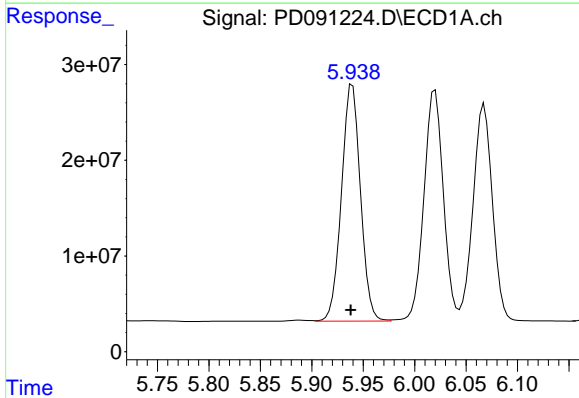
R.T.: 6.068 min
 Delta R.T.: 0.001 min
 Response: 295959993
 Conc: 48.18 ng/ml

Instrument :
 ECD_D
 ClientSampleId :



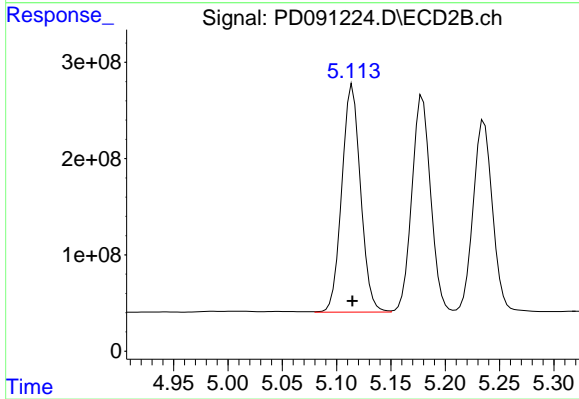
#9 Endosulfan I

R.T.: 5.236 min
 Delta R.T.: 0.000 min
 Response: 2462619174
 Conc: 51.46 ng/ml



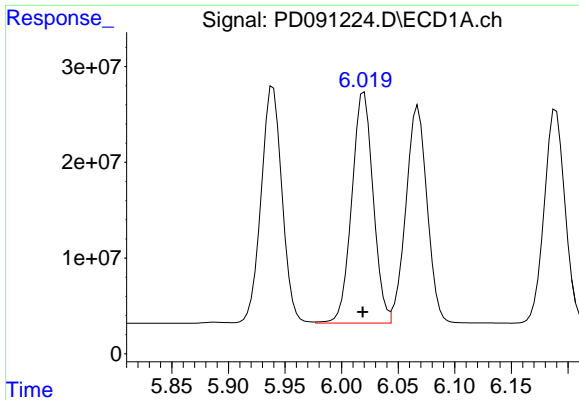
#10 gamma-Chlordane

R.T.: 5.939 min
 Delta R.T.: 0.002 min
 Response: 317665867
 Conc: 48.87 ng/ml



#10 gamma-Chlordane

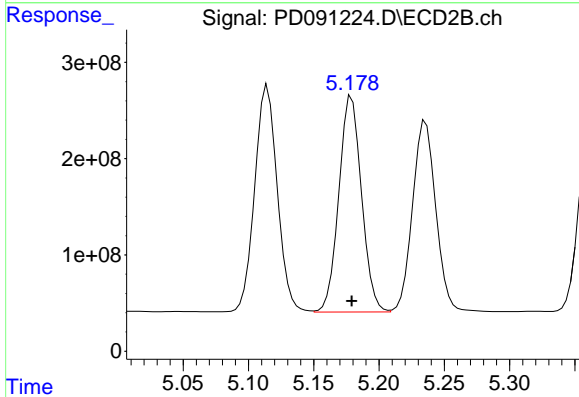
R.T.: 5.115 min
 Delta R.T.: 0.000 min
 Response: 2838470729
 Conc: 51.96 ng/ml



#11 alpha-Chlordane

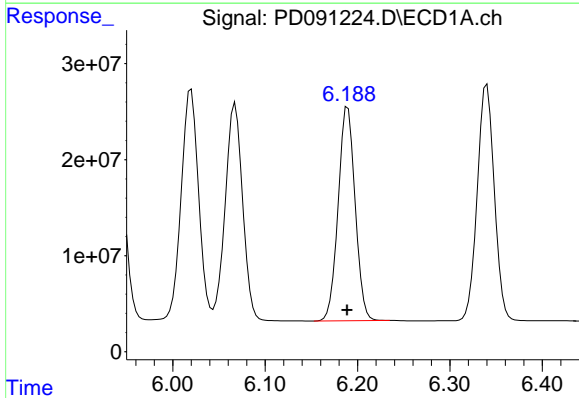
R.T.: 6.020 min
Delta R.T.: 0.001 min
Response: 316889089
Conc: 46.04 ng/ml

Instrument :
ECD_D
ClientSampleId :



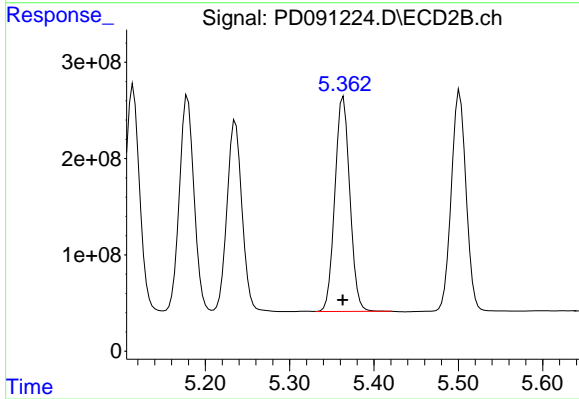
#11 alpha-Chlordane

R.T.: 5.179 min
Delta R.T.: 0.000 min
Response: 2711371524
Conc: 51.81 ng/ml



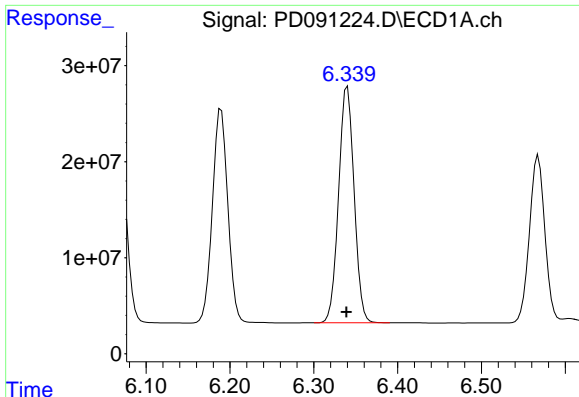
#12 4,4'-DDE

R.T.: 6.189 min
Delta R.T.: 0.000 min
Response: 284513592
Conc: 49.06 ng/ml



#12 4,4'-DDE

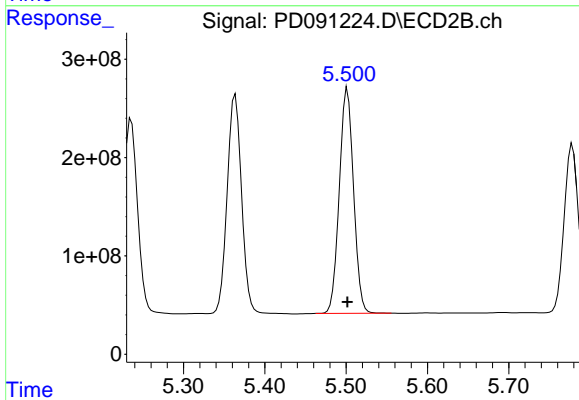
R.T.: 5.364 min
Delta R.T.: 0.000 min
Response: 2744810860
Conc: 51.36 ng/ml



#13 Dieldrin

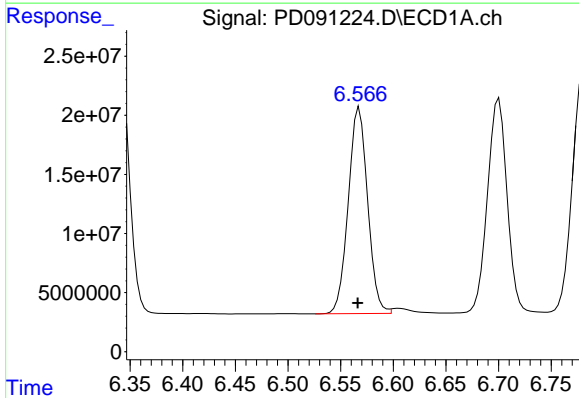
R.T.: 6.340 min
 Delta R.T.: 0.001 min
 Response: 315996323
 Conc: 48.88 ng/ml

Instrument :
 ECD_D
 ClientSampleId :



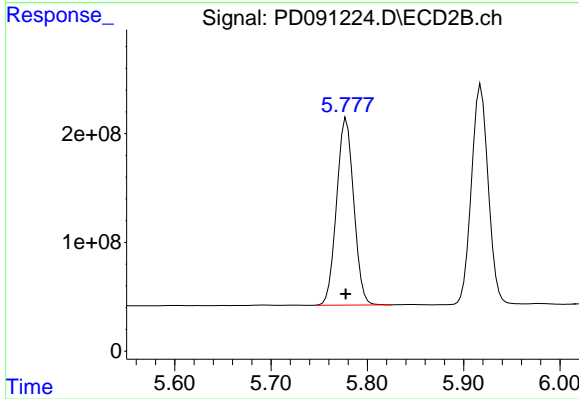
#13 Dieldrin

R.T.: 5.502 min
 Delta R.T.: 0.000 min
 Response: 2783155181
 Conc: 51.24 ng/ml



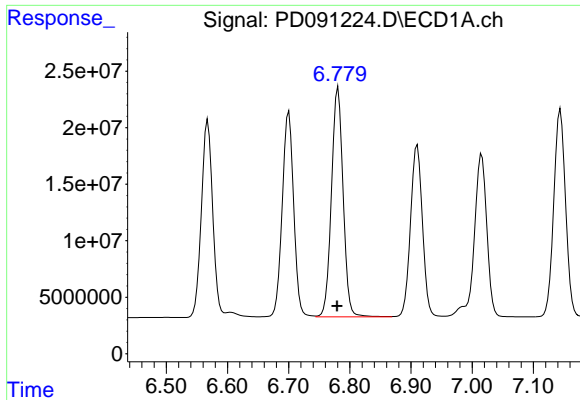
#14 Endrin

R.T.: 6.568 min
 Delta R.T.: 0.002 min
 Response: 223856416
 Conc: 45.10 ng/ml



#14 Endrin

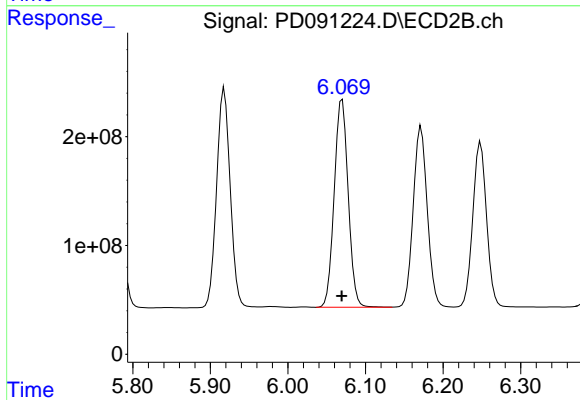
R.T.: 5.778 min
 Delta R.T.: 0.000 min
 Response: 2121095526
 Conc: 46.93 ng/ml



#15 Endosulfan II

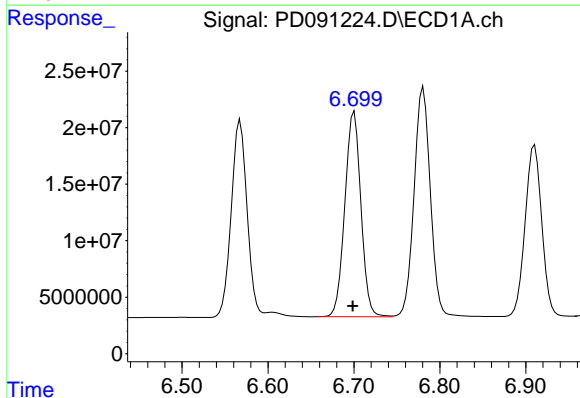
R.T.: 6.781 min
 Delta R.T.: 0.002 min
 Response: 268335621
 Conc: 48.27 ng/ml

Instrument :
 ECD_D
 ClientSampleId :



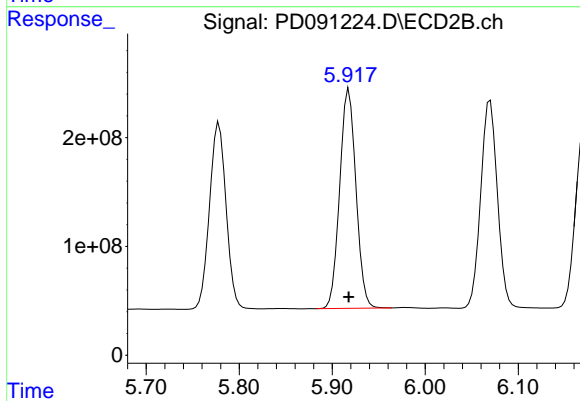
#15 Endosulfan II

R.T.: 6.070 min
 Delta R.T.: 0.000 min
 Response: 2387477626
 Conc: 51.15 ng/ml



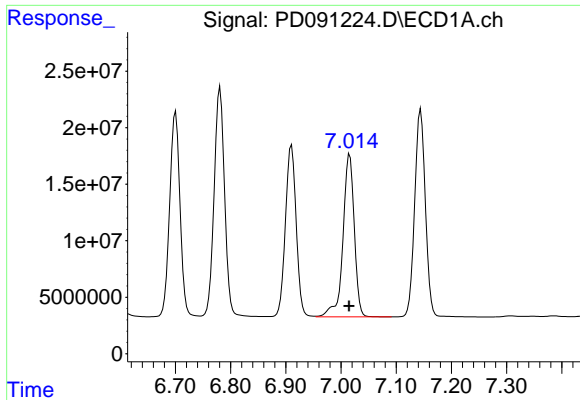
#16 4,4'-DDD

R.T.: 6.700 min
 Delta R.T.: 0.002 min
 Response: 236406667
 Conc: 48.13 ng/ml



#16 4,4'-DDD

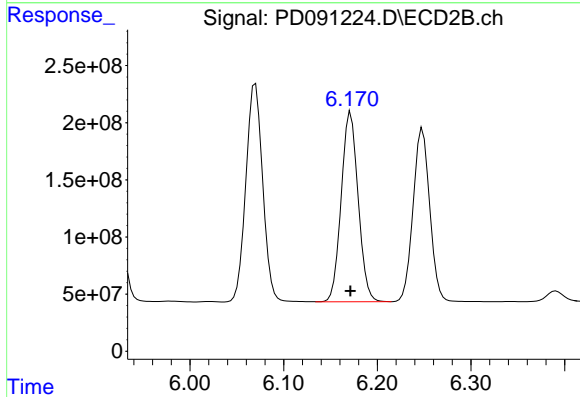
R.T.: 5.918 min
 Delta R.T.: 0.000 min
 Response: 2450324258
 Conc: 50.14 ng/ml



#17 4,4'-DDT

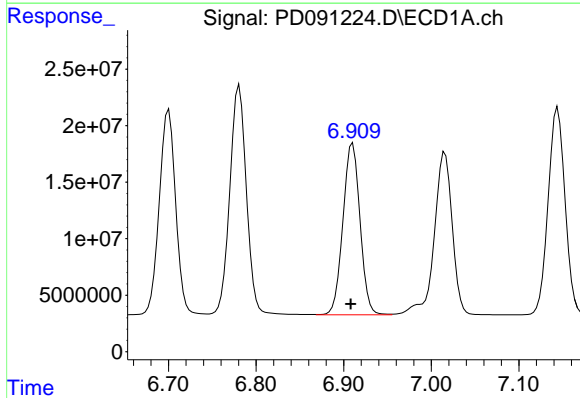
R.T.: 7.016 min
Delta R.T.: 0.001 min
Response: 205304586
Conc: 49.64 ng/ml

Instrument :
ECD_D
ClientSampleId :



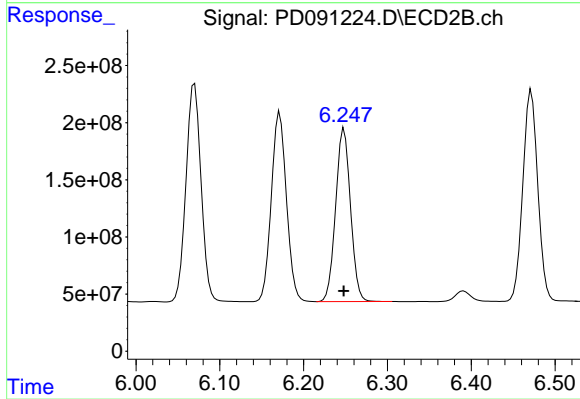
#17 4,4'-DDT

R.T.: 6.172 min
Delta R.T.: 0.000 min
Response: 2088689941
Conc: 53.37 ng/ml



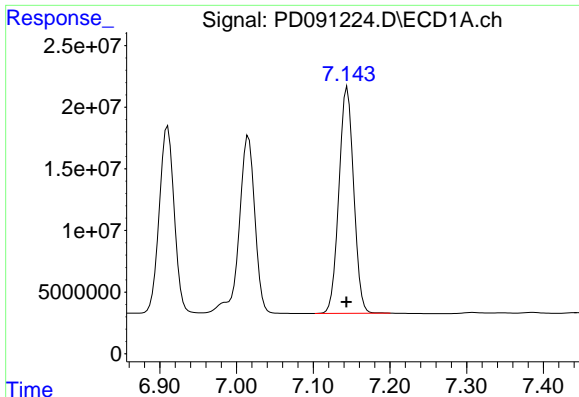
#18 Endrin aldehyde

R.T.: 6.910 min
Delta R.T.: 0.002 min
Response: 205883765
Conc: 49.42 ng/ml



#18 Endrin aldehyde

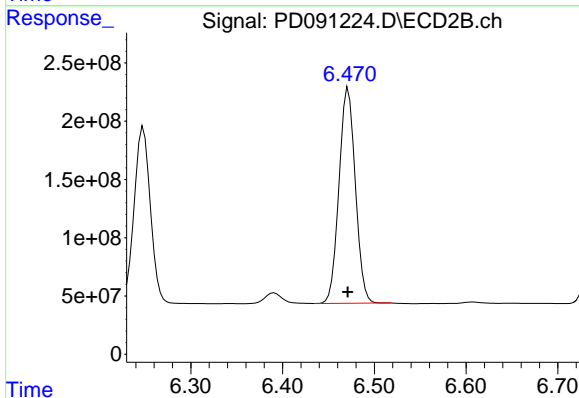
R.T.: 6.248 min
Delta R.T.: 0.000 min
Response: 1865552655
Conc: 52.86 ng/ml



#19 Endosulfan Sulfate

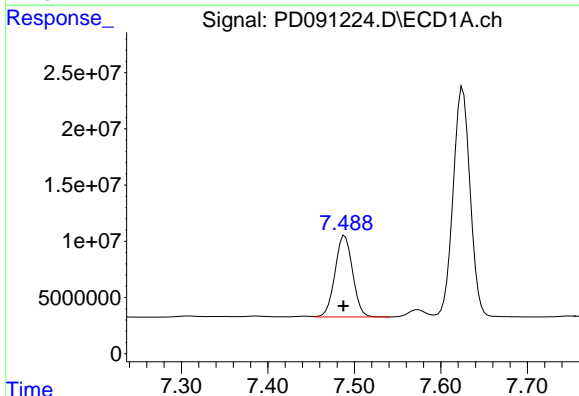
R.T.: 7.144 min
 Delta R.T.: 0.001 min
 Response: 245969860
 Conc: 47.81 ng/ml

Instrument :
 ECD_D
 ClientSampleId :



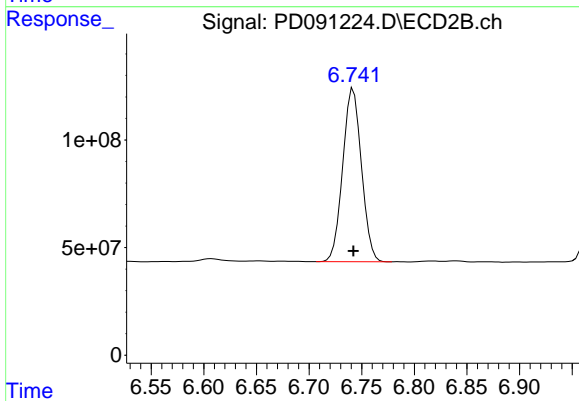
#19 Endosulfan Sulfate

R.T.: 6.472 min
 Delta R.T.: 0.000 min
 Response: 2285753503
 Conc: 50.98 ng/ml



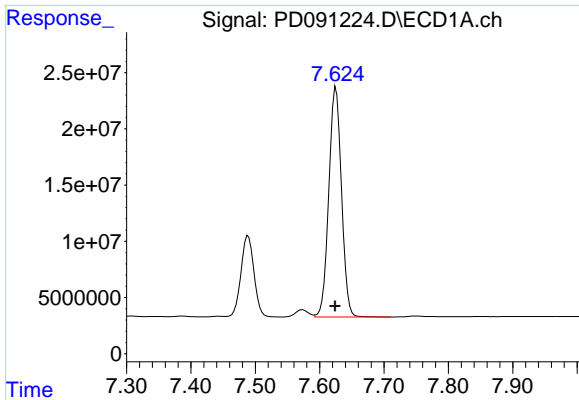
#20 Methoxychlor

R.T.: 7.489 min
 Delta R.T.: 0.002 min
 Response: 101658522
 Conc: 46.75 ng/ml



#20 Methoxychlor

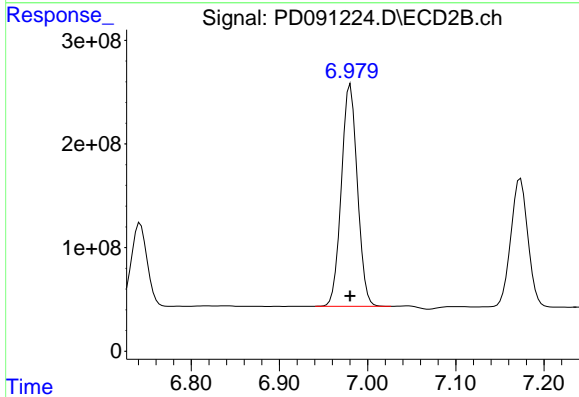
R.T.: 6.742 min
 Delta R.T.: 0.000 min
 Response: 1000781461
 Conc: 49.91 ng/ml



#21 Endrin ketone

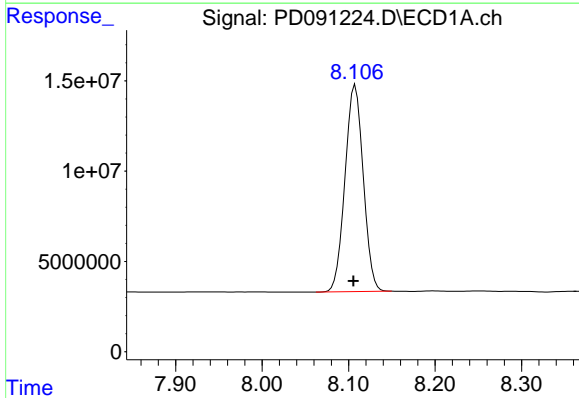
R.T.: 7.625 min
 Delta R.T.: 0.002 min
 Response: 279719313
 Conc: 49.65 ng/ml

Instrument :
 ECD_D
 ClientSampleId :



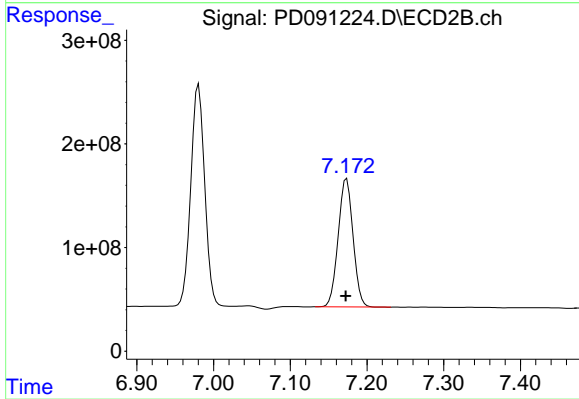
#21 Endrin ketone

R.T.: 6.981 min
 Delta R.T.: 0.000 min
 Response: 2704107112
 Conc: 53.07 ng/ml



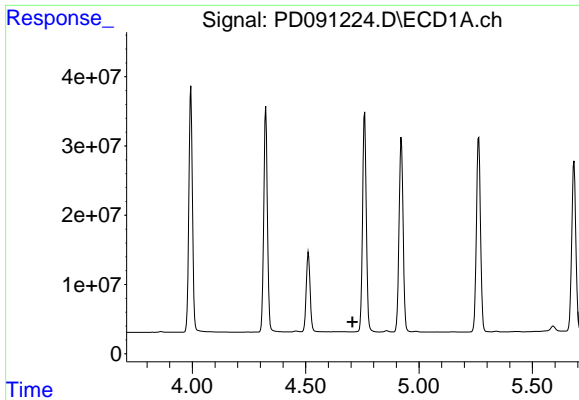
#22 Mirex

R.T.: 8.108 min
 Delta R.T.: 0.002 min
 Response: 167046090
 Conc: 46.96 ng/ml



#22 Mirex

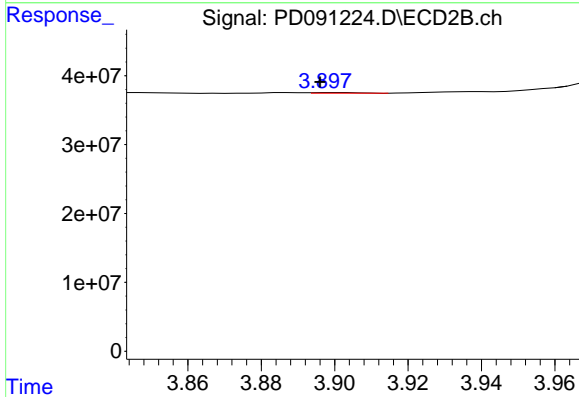
R.T.: 7.173 min
 Delta R.T.: 0.001 min
 Response: 1669369239
 Conc: 50.37 ng/ml



#23 Chlordane-1

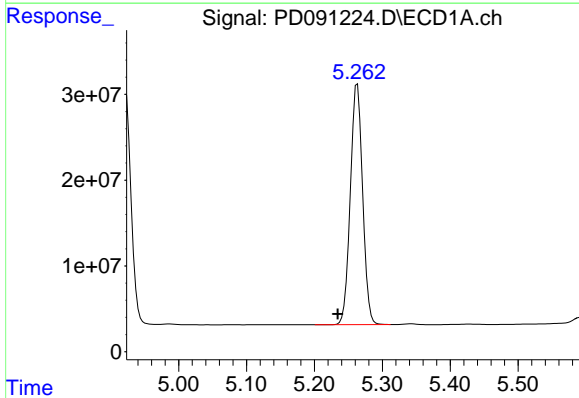
R.T.: 0.000 min
 Exp R.T.: 4.707 min
 Response: 0
 Conc: N.D.

Instrument :
 ECD_D
 ClientSampleId :



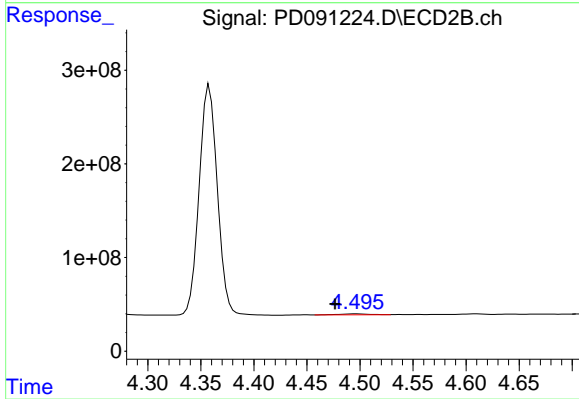
#23 Chlordane-1

R.T.: 3.899 min
 Delta R.T.: 0.003 min
 Response: 849631
 Conc: 0.49 ng/ml



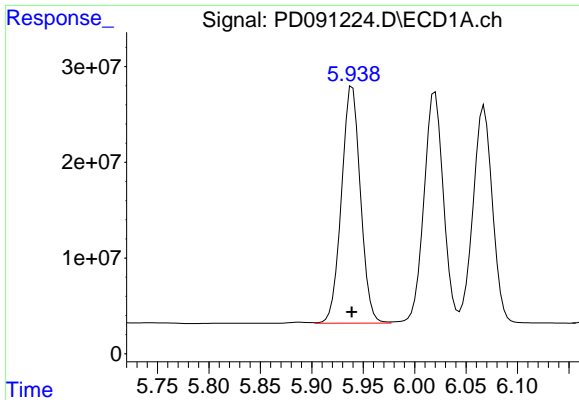
#24 Chlordane-2

R.T.: 5.263 min
 Delta R.T.: 0.029 min
 Response: 352859820
 Conc: 1428.99 ng/ml



#24 Chlordane-2

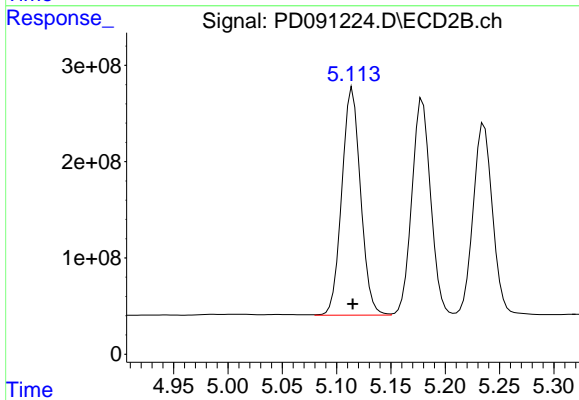
R.T.: 4.496 min
 Delta R.T.: 0.020 min
 Response: 20218954
 Conc: 11.55 ng/ml



#25 Chlordane-3

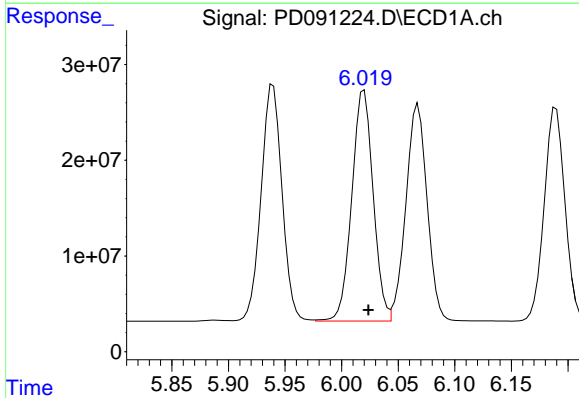
R.T.: 5.939 min
 Delta R.T.: 0.000 min
 Response: 317665867
 Conc: 329.24 ng/ml

Instrument :
 ECD_D
 ClientSampleId :



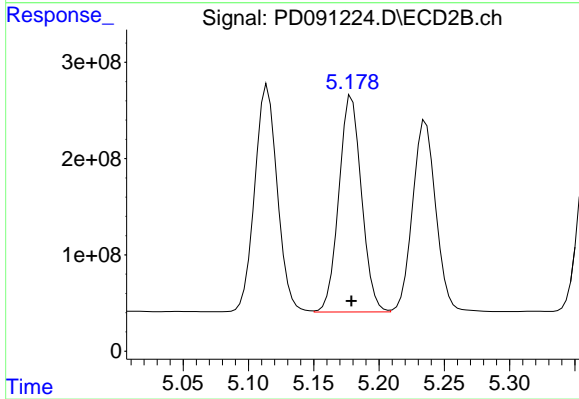
#25 Chlordane-3

R.T.: 5.115 min
 Delta R.T.: 0.000 min
 Response: 2838470729
 Conc: 493.34 ng/ml



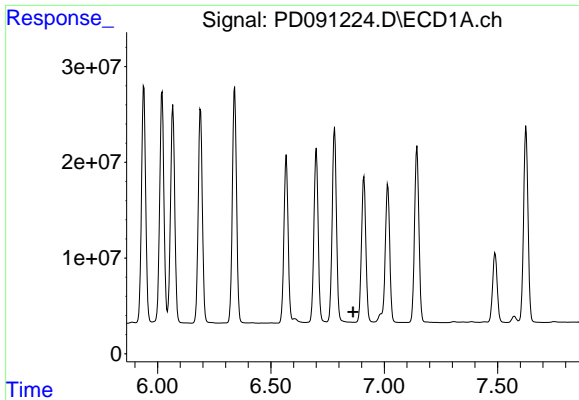
#26 Chlordane-4

R.T.: 6.020 min
 Delta R.T.: -0.004 min
 Response: 316889089
 Conc: 263.81 ng/ml



#26 Chlordane-4

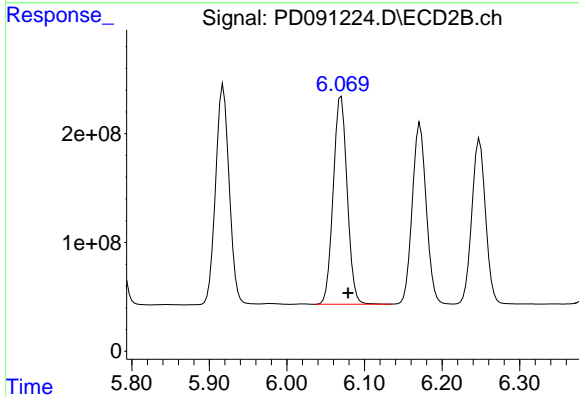
R.T.: 5.179 min
 Delta R.T.: 0.000 min
 Response: 2711371524
 Conc: 566.81 ng/ml



#27 Chlordane-5

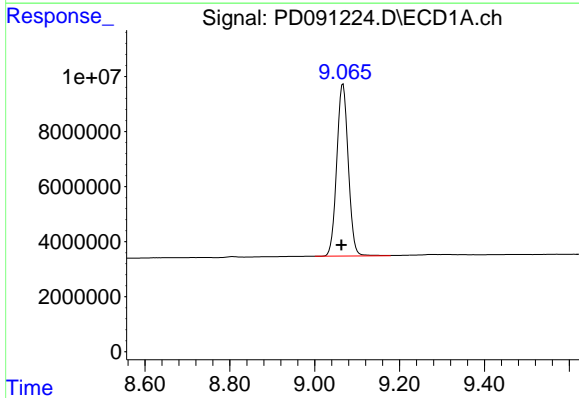
R.T.: 0.000 min
 Exp R.T.: 6.863 min
 Response: 0
 Conc: N.D.

Instrument :
 ECD_D
 ClientSampleId :



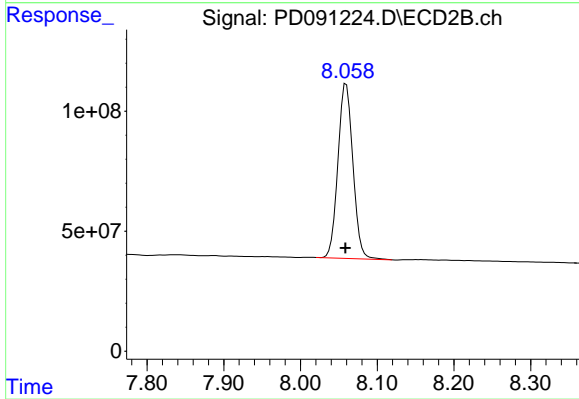
#27 Chlordane-5

R.T.: 6.070 min
 Delta R.T.: -0.009 min
 Response: 2387477626
 Conc: 1176.56 ng/ml



#28 Decachlorobiphenyl

R.T.: 9.067 min
 Delta R.T.: 0.003 min
 Response: 117640766
 Conc: 23.61 ng/ml



#28 Decachlorobiphenyl

R.T.: 8.060 min
 Delta R.T.: 0.000 min
 Response: 988206431
 Conc: 24.97 ng/ml