

Data Path : Z:\pestpcbsrv\HPCHEM1\ECD_D\Data\PD111725\
 Data File : PD091233.D
 Signal(s) : Signal #1: ECD1A.ch Signal #2: ECD2B.ch
 Acq On : 17 Nov 2025 16:30
 Operator : AR\AJ
 Sample : Q3648-01
 Misc :
 ALS Vial : 17 Sample Multiplier: 1

Instrument :
 ECD_D
 ClientSampleId :

Integration File signal 1: autoint1.e
 Integration File signal 2: autoint2.e
 Quant Time: Nov 18 01:10:56 2025
 Quant Method : Z:\pestpcbsrv\HPCHEM1\ECD_D\Method\PD111525.M
 Quant Title : GC Extractables
 QLast Update : Sat Nov 15 04:46:13 2025
 Response via : Initial Calibration
 Integrator: ChemStation

Volume Inj. : 1 µl
 Signal #1 Phase : ZB-MR2 Signal #2 Phase: ZB-MR2
 Signal #1 Info : 30M x 0.32mm x0.5 Signal #2 Info : 30M x 0.32mm x 0.25µm

	Compound	RT#1	RT#2	Resp#1	Resp#2	ng/ml	ng/ml

System Monitoring Compounds							
1)	SA Tetrachlo...	3.543	2.873	38418644	516.8E6	11.140	14.110 #
28)	SA Decachlor...	9.067	8.060	72549794	239.2E6	14.563	6.044 #
Target Compounds							
2)	A alpha-BHC	3.987	3.402f	561920	39989826	0.070	0.633 #
3)	MA gamma-BHC...	4.331	0.000	4109868	0	0.550	N.D. #
4)	MA Heptachlor	4.921	4.087	24674219	56980303	3.445	1.032 #
5)	MB Aldrin	5.239f	4.351	10075406	212.8E6	1.388	3.770 #
6)	B beta-BHC	4.540f	4.004	8753922	146.0E6	3.013	6.078 #
7)	B delta-BHC	4.773	4.237f	6998831	48653154	0.942	0.832
8)	Heptachlo...	5.682	4.858	3165229	148.7E6	0.487	2.918 #
9)	A Endosulfan I	6.095f	5.256f	6353740	50019494	1.034	1.045
10)	B gamma-Chl...	5.938	5.115	8588828	452.7E6	1.321	8.287 #
11)	B alpha-Chl...	6.022	5.179	23347201	299.7E6	3.392	5.727 #
12)	B 4,4'-DDE	0.000	5.368	0	198.7E6	N.D.	3.719 #
13)	MA Dieldrin	6.358f	5.504	-605888	103.6E6	N.D.	1.907
14)	MA Endrin	6.560	5.777	1023997	60555737	0.206	1.340 #
15)	B Endosulfa...	6.788	6.096f	5832186	65850773	1.049	1.411 #
16)	A 4,4'-DDD	6.687	5.908	2198996	71919331	0.448	1.472 #
17)	MA 4,4'-DDT	7.013	6.168	2729098	55298914	0.660	1.413 #
18)	B Endrin al...	6.920	6.275f	5978985	41702632	1.435	1.182
19)	B Endosulfa...	7.141	6.441f	746237	21015422	0.145	0.469 #
20)	A Methoxychlor	7.501	0.000	3642071	0	1.675	N.D. #
21)	B Endrin ke...	7.612	0.000	3590327	0	0.637	N.D. #
23)	Chlordane-1	4.712	3.892	1350124	147.6E6	5.487	85.817 #
24)	Chlordane-2	5.239	4.446f	10075406	114.2E6	40.803	65.222 #
25)	Chlordane-3	5.938	5.115	8588828	452.7E6	8.902	78.678 #
26)	Chlordane-4	6.022	5.179	23347201	299.7E6	19.436	62.652 #
27)	Chlordane-5	6.838f	6.096	1211622	65850773	6.133	32.452 #

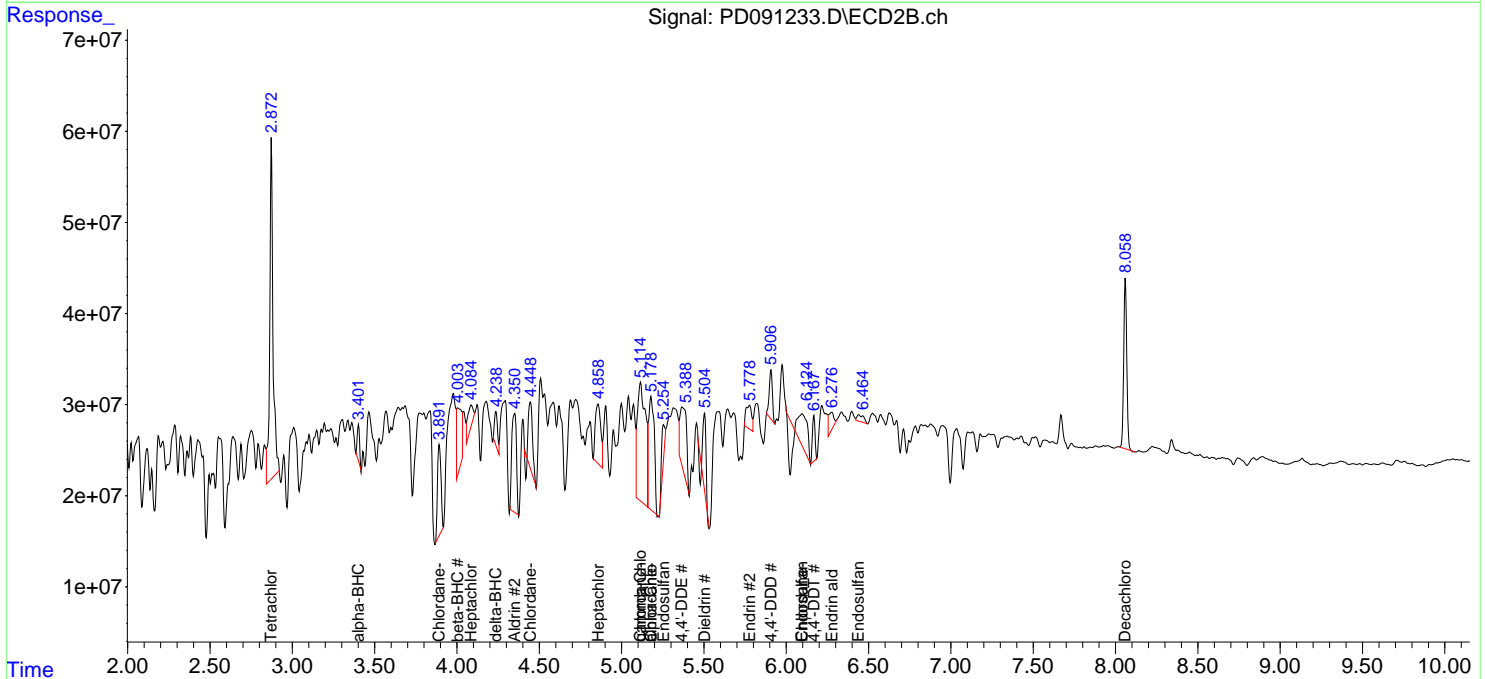
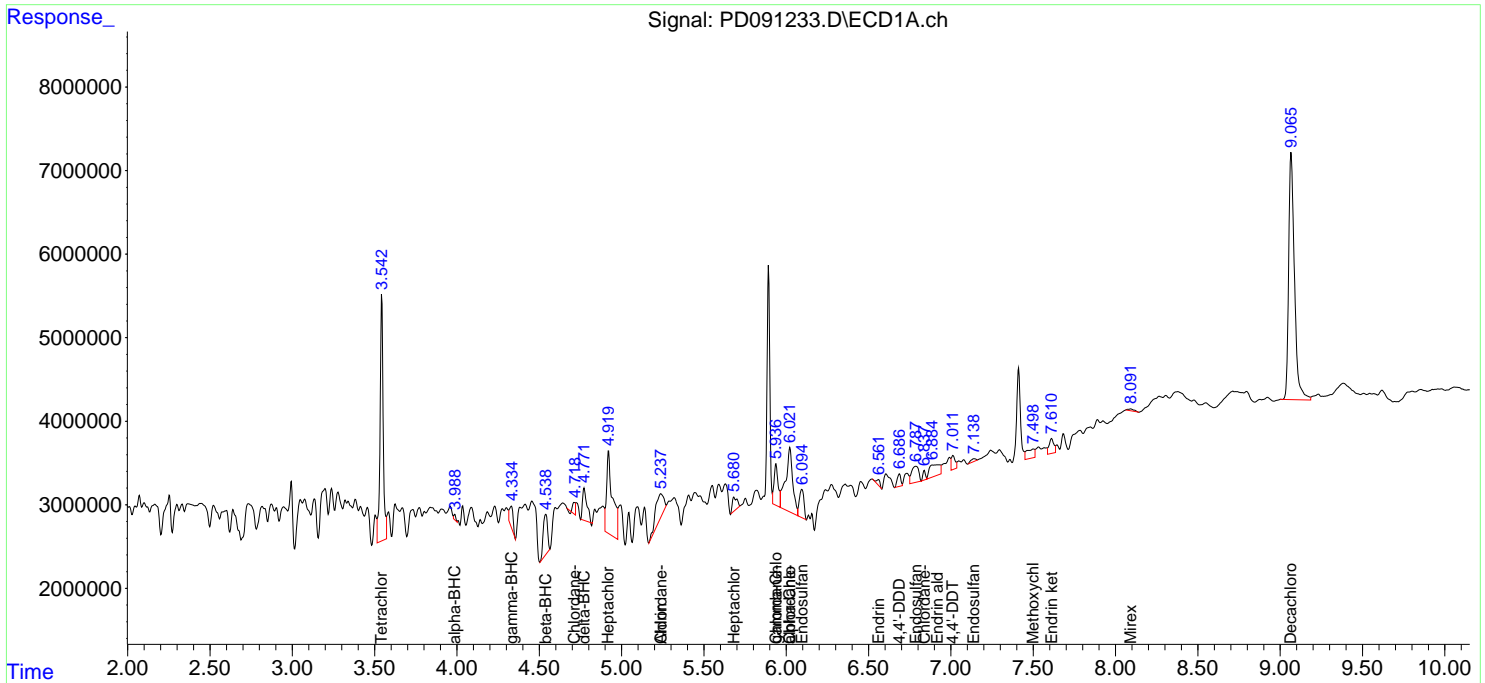
(f)=RT Delta > 1/2 Window (#)=Amounts differ by > 25% (m)=manual int.

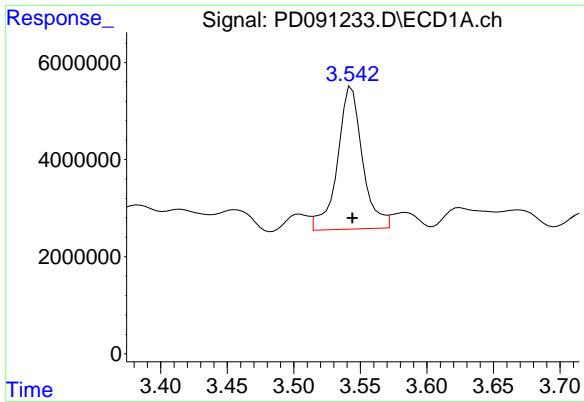
Data Path : Z:\pestpcbsrv\HPCHEM1\ECD_D\Data\PD111725\
 Data File : PD091233.D
 Signal(s) : Signal #1: ECD1A.ch Signal #2: ECD2B.ch
 Acq On : 17 Nov 2025 16:30
 Operator : AR\AJ
 Sample : Q3648-01
 Misc :
 ALS Vial : 17 Sample Multiplier: 1

Instrument :
 ECD_D
 ClientSampleId :

Integration File signal 1: autoint1.e
 Integration File signal 2: autoint2.e
 Quant Time: Nov 18 01:10:56 2025
 Quant Method : Z:\pestpcbsrv\HPCHEM1\ECD_D\Method\PD111525.M
 Quant Title : GC Extractables
 QLast Update : Sat Nov 15 04:46:13 2025
 Response via : Initial Calibration
 Integrator: ChemStation

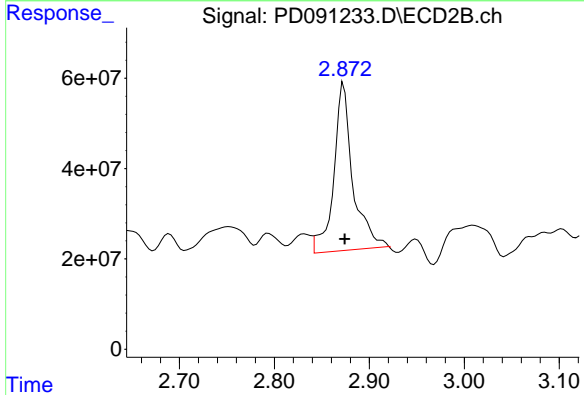
Volume Inj. : 1 µl
 Signal #1 Phase : ZB-MR1 Signal #2 Phase: ZB-MR2
 Signal #1 Info : 30M x 0.32mm x0.5 Signal #2 Info : 30M x 0.32mm x 0.25µm



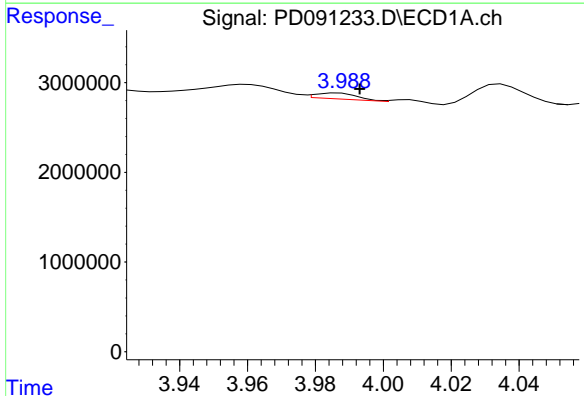


#1 Tetrachloro-m-xylene
 R.T.: 3.543 min
 Delta R.T.: 0.000 min
 Response: 38418644
 Conc: 11.14 ng/ml

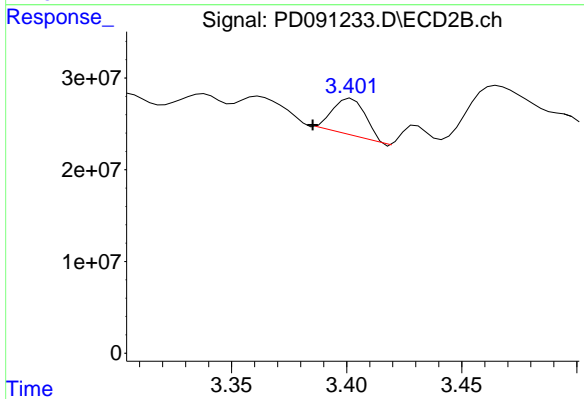
Instrument :
 ECD_D
 ClientSampleId :



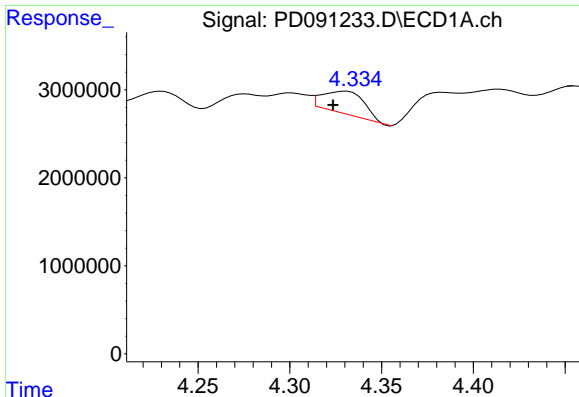
#1 Tetrachloro-m-xylene
 R.T.: 2.873 min
 Delta R.T.: -0.001 min
 Response: 516844062
 Conc: 14.11 ng/ml



#2 alpha-BHC
 R.T.: 3.987 min
 Delta R.T.: -0.006 min
 Response: 561920
 Conc: 0.07 ng/ml



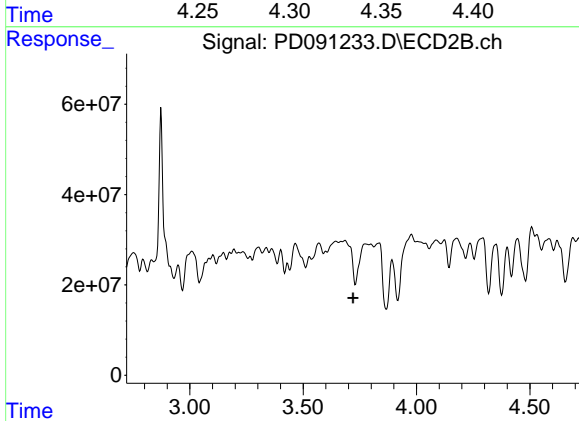
#2 alpha-BHC
 R.T.: 3.402 min
 Delta R.T.: 0.017 min
 Response: 39989826
 Conc: 0.63 ng/ml



#3 gamma-BHC (Lindane)

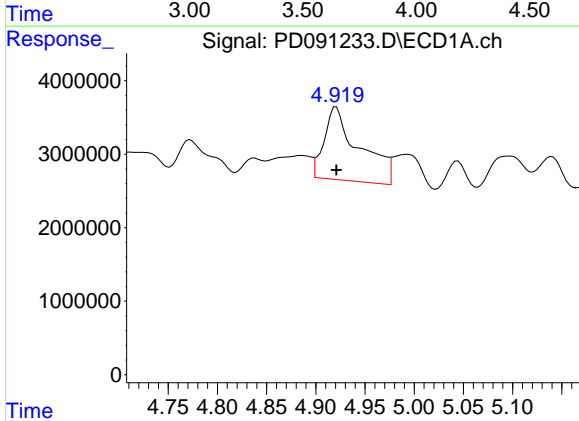
R.T.: 4.331 min
 Delta R.T.: 0.007 min
 Response: 4109868
 Conc: 0.55 ng/ml

Instrument :
 ECD_D
 ClientSampleId :



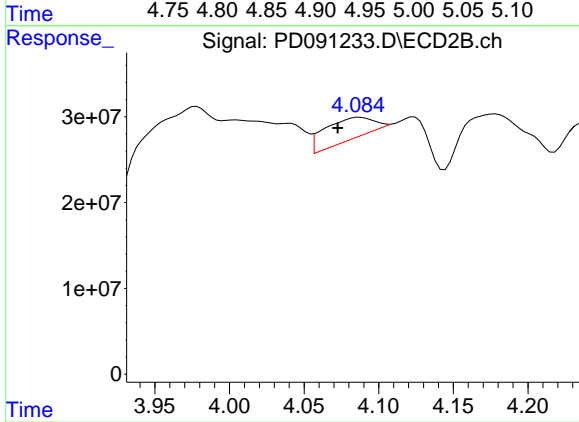
#3 gamma-BHC (Lindane)

R.T.: 0.000 min
 Exp R.T. : 3.721 min
 Response: 0
 Conc: N.D.



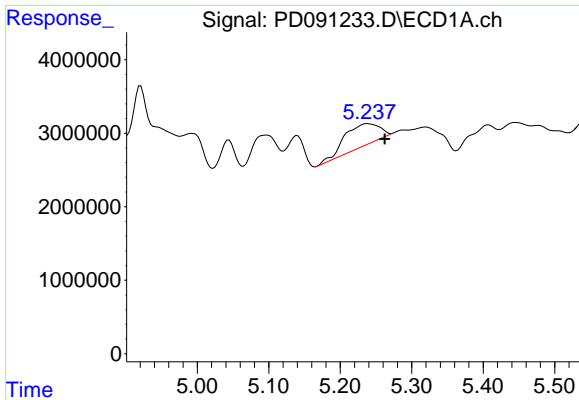
#4 Heptachlor

R.T.: 4.921 min
 Delta R.T.: 0.000 min
 Response: 24674219
 Conc: 3.45 ng/ml



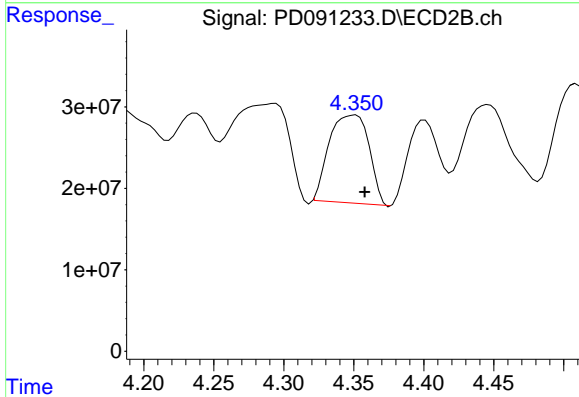
#4 Heptachlor

R.T.: 4.087 min
 Delta R.T.: 0.015 min
 Response: 56980303
 Conc: 1.03 ng/ml

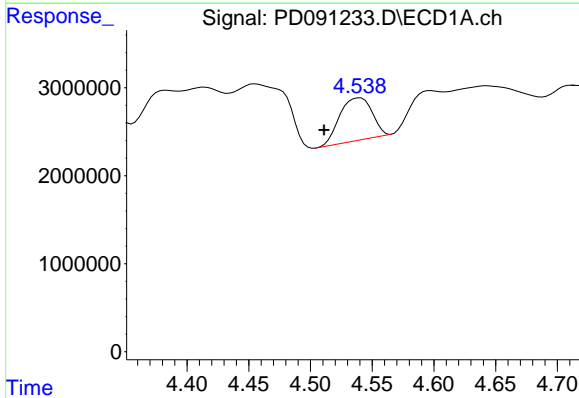


#5 Aldrin
 R.T.: 5.239 min
 Delta R.T.: -0.024 min
 Response: 10075406
 Conc: 1.39 ng/ml

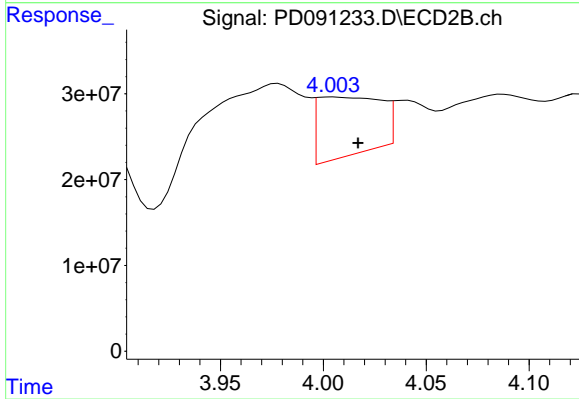
Instrument :
 ECD_D
 ClientSampleId :



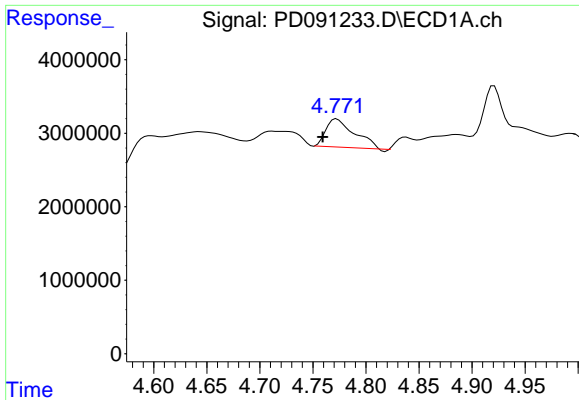
#5 Aldrin
 R.T.: 4.351 min
 Delta R.T.: -0.006 min
 Response: 212822397
 Conc: 3.77 ng/ml



#6 beta-BHC
 R.T.: 4.540 min
 Delta R.T.: 0.029 min
 Response: 8753922
 Conc: 3.01 ng/ml



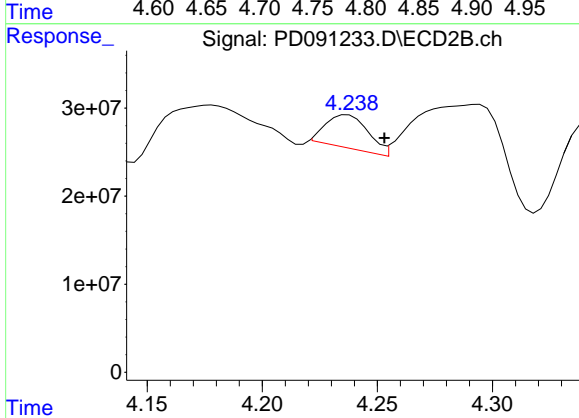
#6 beta-BHC
 R.T.: 4.004 min
 Delta R.T.: -0.012 min
 Response: 146047089
 Conc: 6.08 ng/ml



#7 delta-BHC

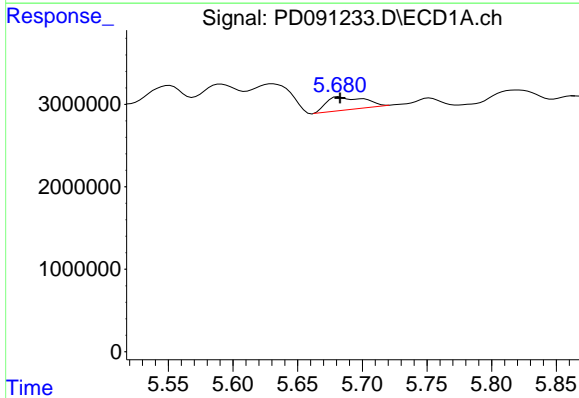
R.T.: 4.773 min
 Delta R.T.: 0.013 min
 Response: 6998831
 Conc: 0.94 ng/ml

Instrument :
 ECD_D
 ClientSampleId :



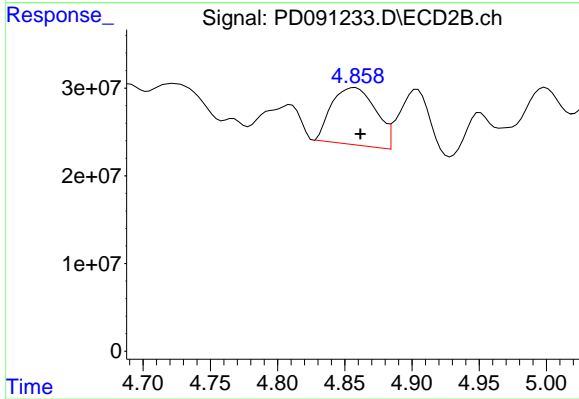
#7 delta-BHC

R.T.: 4.237 min
 Delta R.T.: -0.016 min
 Response: 48653154
 Conc: 0.83 ng/ml



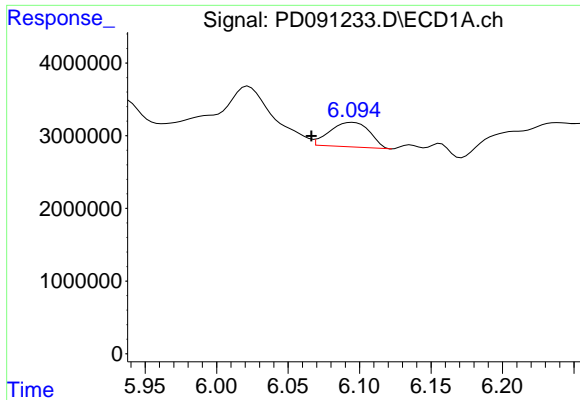
#8 Heptachlor epoxide

R.T.: 5.682 min
 Delta R.T.: 0.000 min
 Response: 3165229
 Conc: 0.49 ng/ml



#8 Heptachlor epoxide

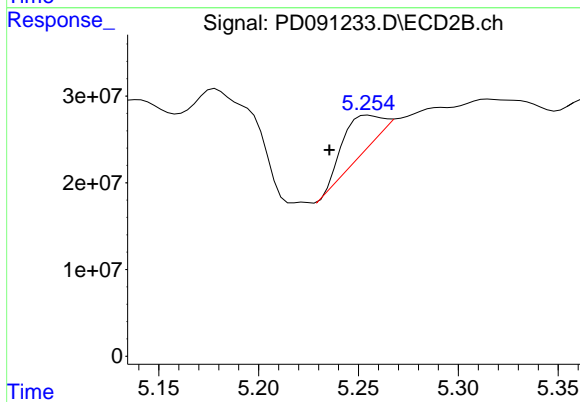
R.T.: 4.858 min
 Delta R.T.: -0.004 min
 Response: 148676983
 Conc: 2.92 ng/ml



#9 Endosulfan I

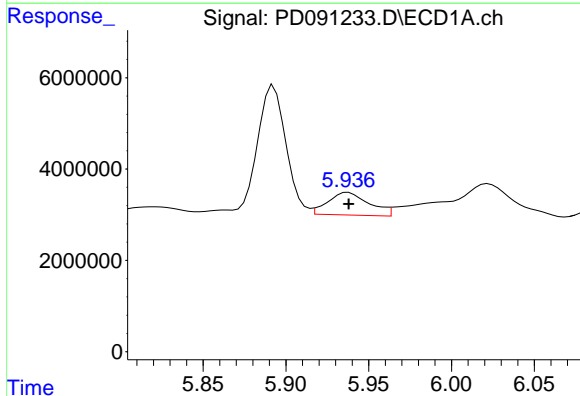
R.T.: 6.095 min
 Delta R.T.: 0.029 min
 Response: 6353740
 Conc: 1.03 ng/ml

Instrument :
 ECD_D
 ClientSampleId :



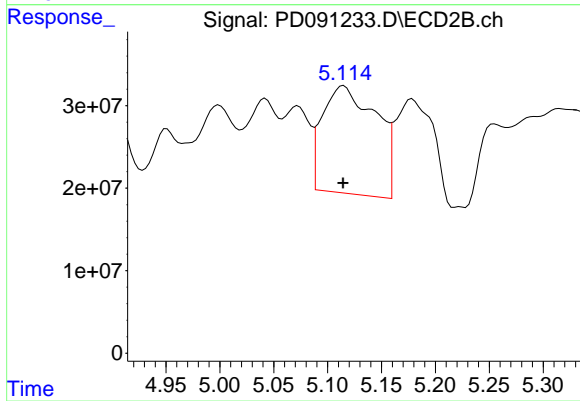
#9 Endosulfan I

R.T.: 5.256 min
 Delta R.T.: 0.020 min
 Response: 50019494
 Conc: 1.05 ng/ml



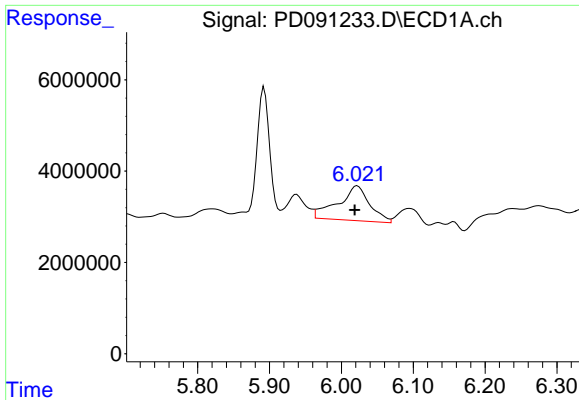
#10 gamma-Chlordane

R.T.: 5.938 min
 Delta R.T.: 0.000 min
 Response: 8588828
 Conc: 1.32 ng/ml



#10 gamma-Chlordane

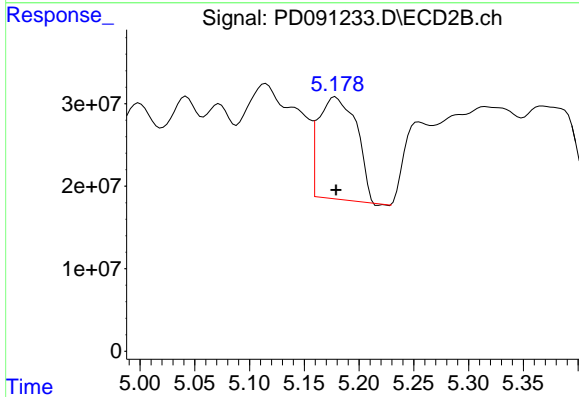
R.T.: 5.115 min
 Delta R.T.: 0.000 min
 Response: 452681343
 Conc: 8.29 ng/ml



#11 alpha-Chlordane

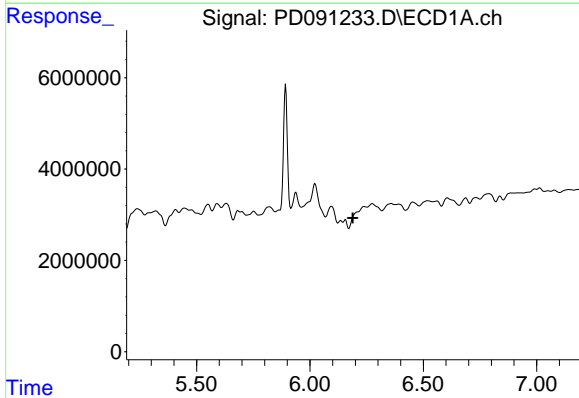
R.T.: 6.022 min
 Delta R.T.: 0.004 min
 Response: 23347201
 Conc: 3.39 ng/ml

Instrument :
 ECD_D
 ClientSampleId :



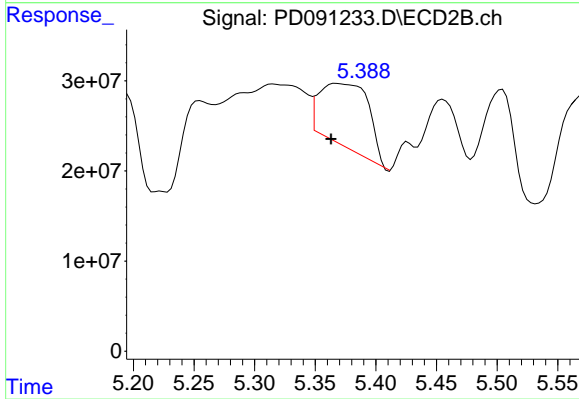
#11 alpha-Chlordane

R.T.: 5.179 min
 Delta R.T.: 0.000 min
 Response: 299698639
 Conc: 5.73 ng/ml



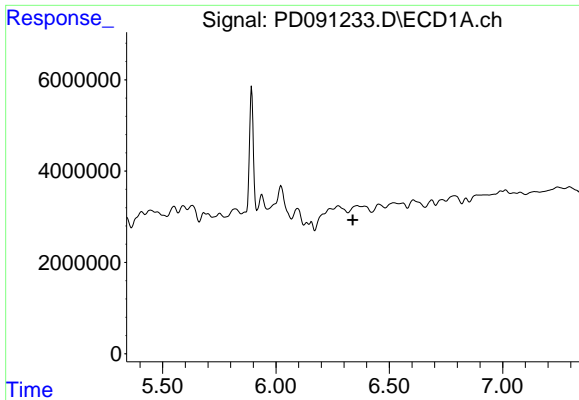
#12 4,4'-DDE

R.T.: 0.000 min
 Exp R.T. : 6.189 min
 Response: 0
 Conc: N.D.



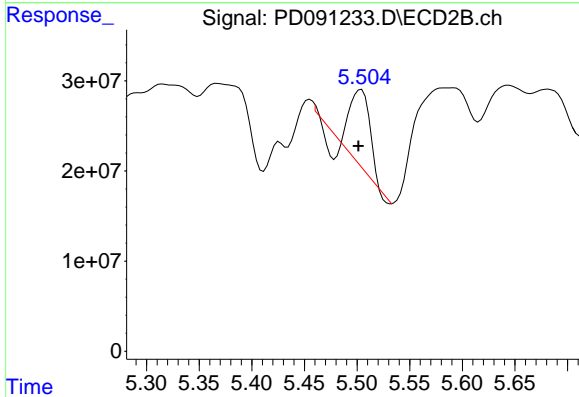
#12 4,4'-DDE

R.T.: 5.368 min
 Delta R.T.: 0.005 min
 Response: 198731756
 Conc: 3.72 ng/ml

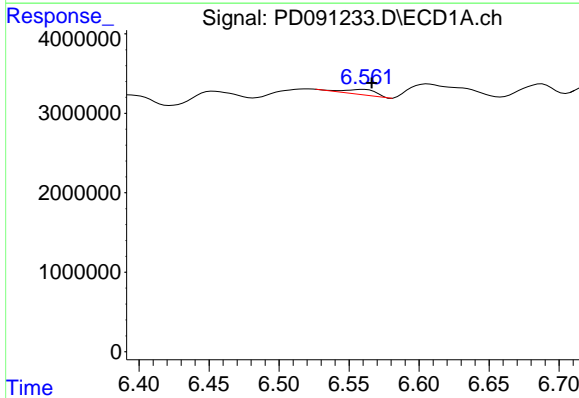


#13 Dieldrin
 R.T.: 6.358 min
 Delta R.T.: 0.019 min
 Response: -605888
 Conc: N.D.

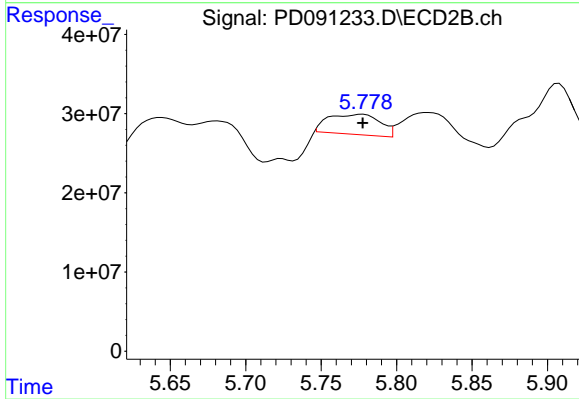
Instrument :
 ECD_D
 ClientSampleId :



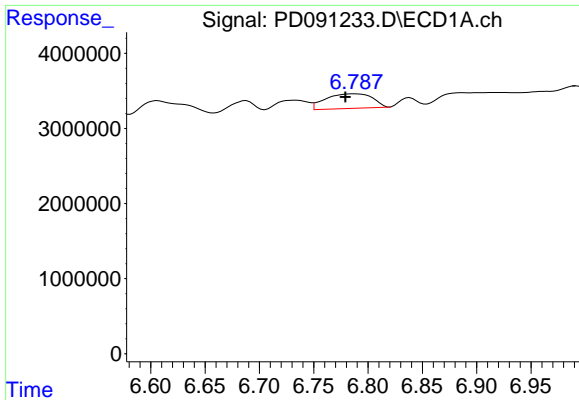
#13 Dieldrin
 R.T.: 5.504 min
 Delta R.T.: 0.002 min
 Response: 103574242
 Conc: 1.91 ng/ml



#14 Endrin
 R.T.: 6.560 min
 Delta R.T.: -0.006 min
 Response: 1023997
 Conc: 0.21 ng/ml



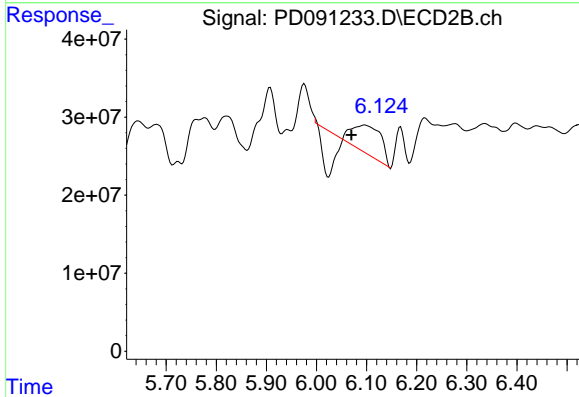
#14 Endrin
 R.T.: 5.777 min
 Delta R.T.: 0.000 min
 Response: 60555737
 Conc: 1.34 ng/ml



#15 Endosulfan II

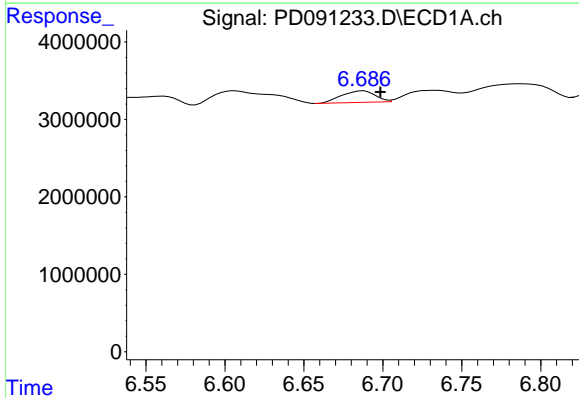
R.T.: 6.788 min
 Delta R.T.: 0.009 min
 Response: 5832186
 Conc: 1.05 ng/ml

Instrument :
 ECD_D
 ClientSampleId :



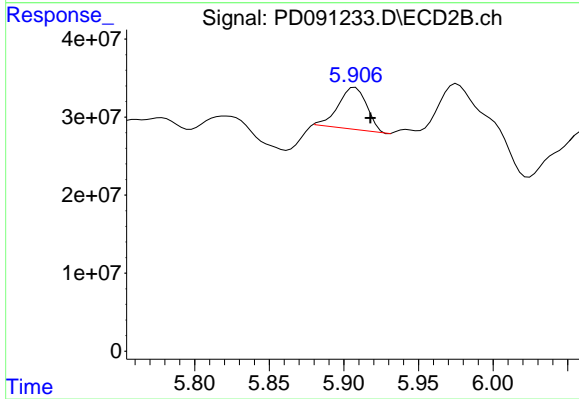
#15 Endosulfan II

R.T.: 6.096 min
 Delta R.T.: 0.027 min
 Response: 65850773
 Conc: 1.41 ng/ml



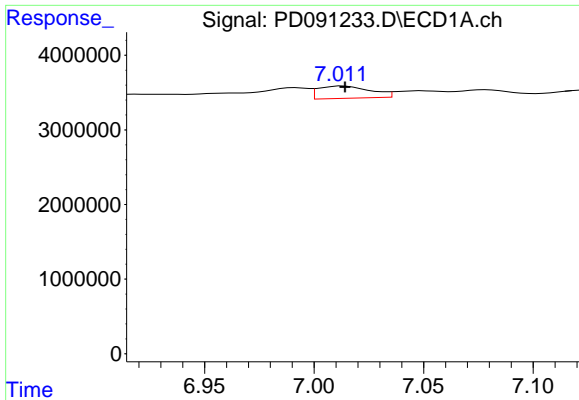
#16 4,4'-DDD

R.T.: 6.687 min
 Delta R.T.: -0.011 min
 Response: 2198996
 Conc: 0.45 ng/ml



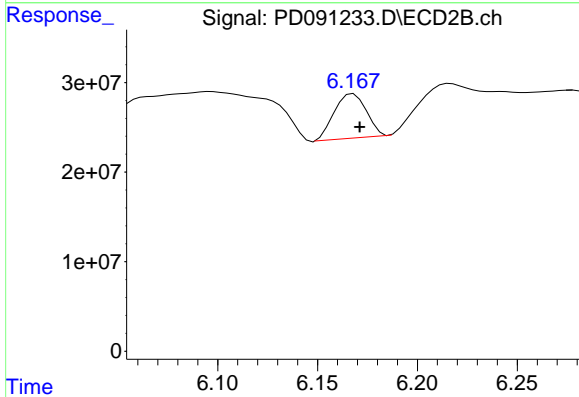
#16 4,4'-DDD

R.T.: 5.908 min
 Delta R.T.: -0.010 min
 Response: 71919331
 Conc: 1.47 ng/ml

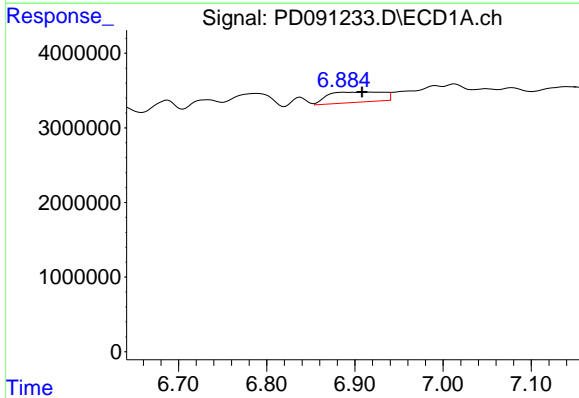


#17 4,4'-DDT
 R.T.: 7.013 min
 Delta R.T.: 0.000 min
 Response: 2729098
 Conc: 0.66 ng/ml

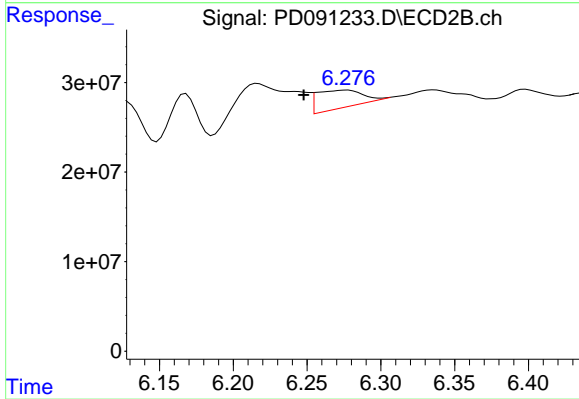
Instrument :
 ECD_D
 ClientSampleId :



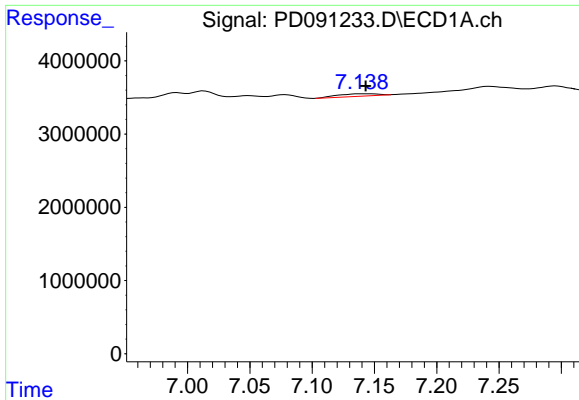
#17 4,4'-DDT
 R.T.: 6.168 min
 Delta R.T.: -0.003 min
 Response: 55298914
 Conc: 1.41 ng/ml



#18 Endrin aldehyde
 R.T.: 6.920 min
 Delta R.T.: 0.011 min
 Response: 5978985
 Conc: 1.44 ng/ml



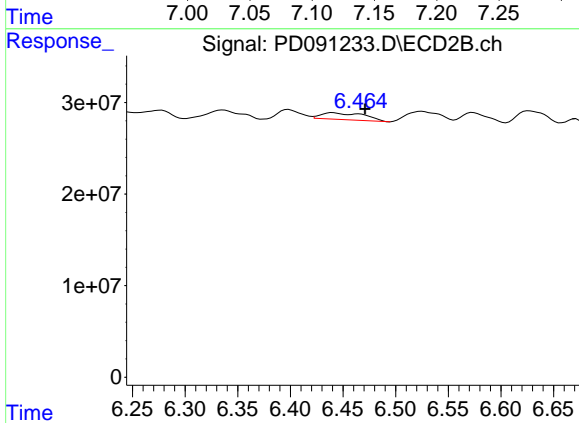
#18 Endrin aldehyde
 R.T.: 6.275 min
 Delta R.T.: 0.028 min
 Response: 41702632
 Conc: 1.18 ng/ml



#19 Endosulfan Sulfate

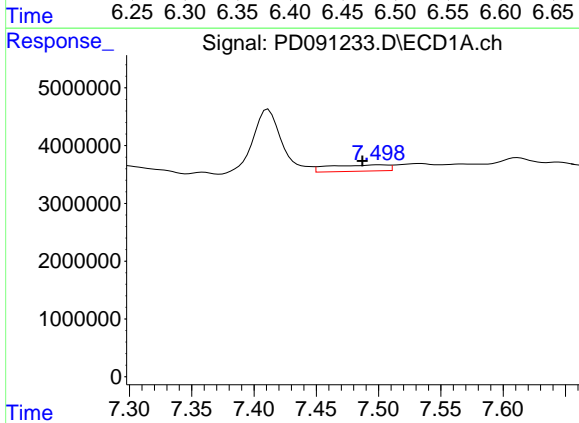
R.T.: 7.141 min
 Delta R.T.: -0.002 min
 Response: 746237
 Conc: 0.15 ng/ml

Instrument :
 ECD_D
 ClientSampleId :



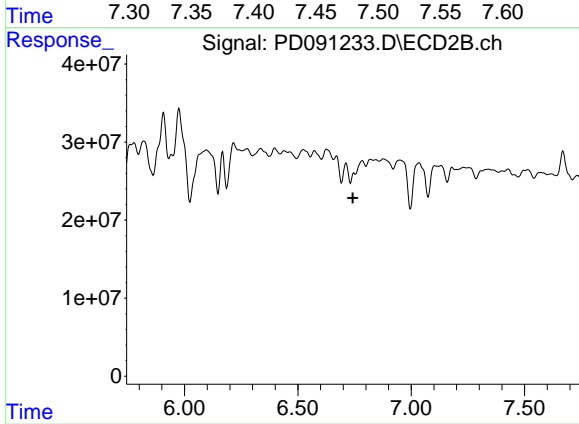
#19 Endosulfan Sulfate

R.T.: 6.441 min
 Delta R.T.: -0.030 min
 Response: 21015422
 Conc: 0.47 ng/ml



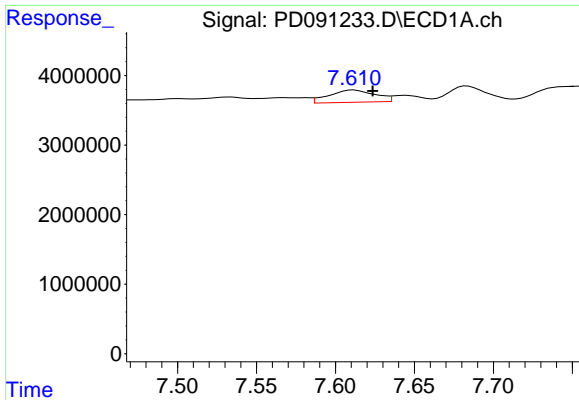
#20 Methoxychlor

R.T.: 7.501 min
 Delta R.T.: 0.014 min
 Response: 3642071
 Conc: 1.68 ng/ml



#20 Methoxychlor

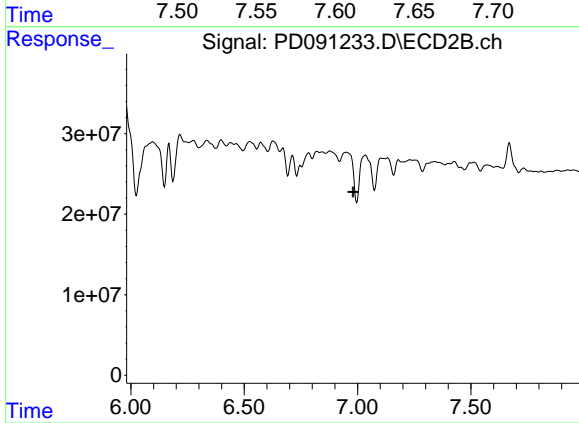
R.T.: 0.000 min
 Exp R.T. : 6.742 min
 Response: 0
 Conc: N.D.



#21 Endrin ketone

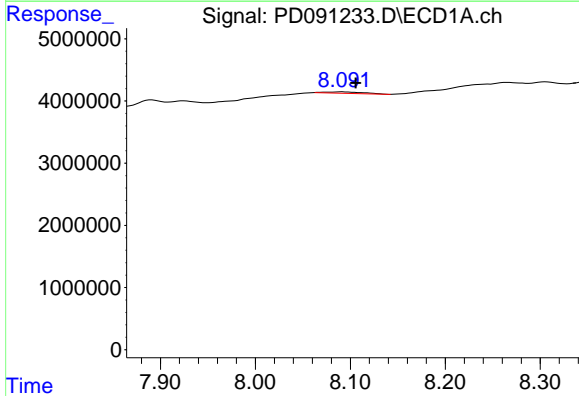
R.T.: 7.612 min
 Delta R.T.: -0.012 min
 Response: 3590327
 Conc: 0.64 ng/ml

Instrument :
 ECD_D
 ClientSampleId :



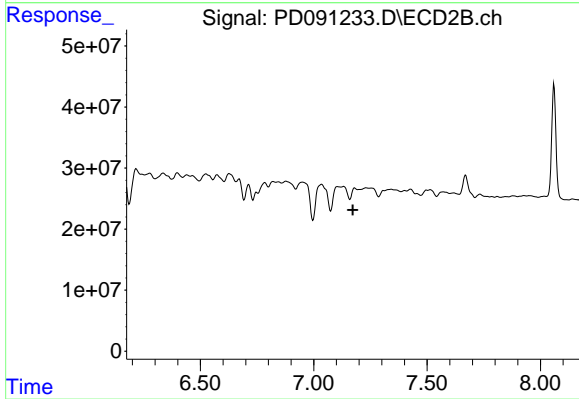
#21 Endrin ketone

R.T.: 0.000 min
 Exp R.T. : 6.980 min
 Response: 0
 Conc: N.D.



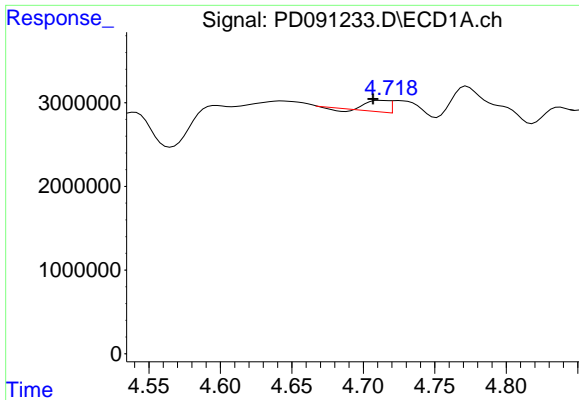
#22 Mirex

R.T.: 8.092 min
 Delta R.T.: -0.014 min
 Response: 633364
 Conc: 0.18 ng/ml



#22 Mirex

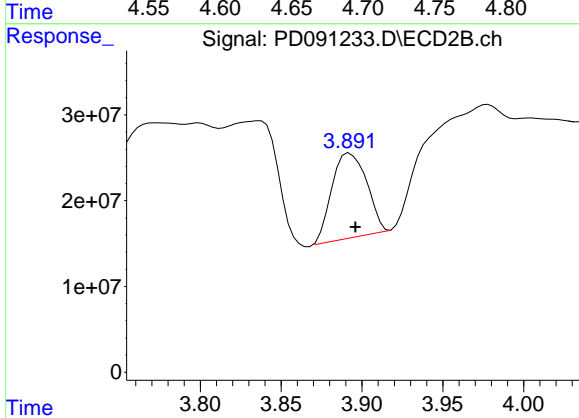
R.T.: 7.182 min
 Delta R.T.: 0.010 min
 Response: -19354983
 Conc: N.D.



#23 Chlordane-1

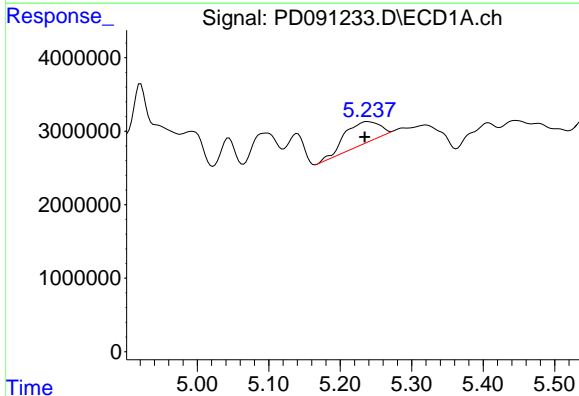
R.T.: 4.712 min
 Delta R.T.: 0.005 min
 Response: 1350124
 Conc: 5.49 ng/ml

Instrument :
 ECD_D
 ClientSampleId :



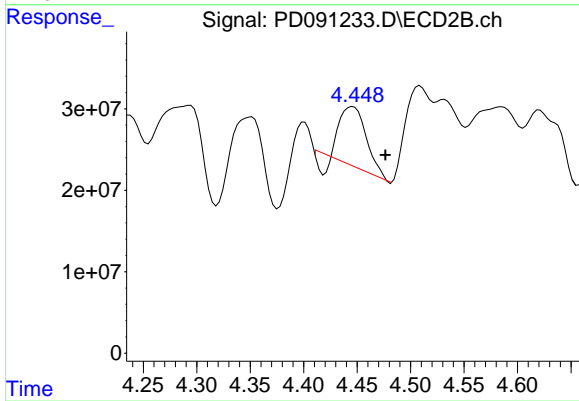
#23 Chlordane-1

R.T.: 3.892 min
 Delta R.T.: -0.004 min
 Response: 147629849
 Conc: 85.82 ng/ml



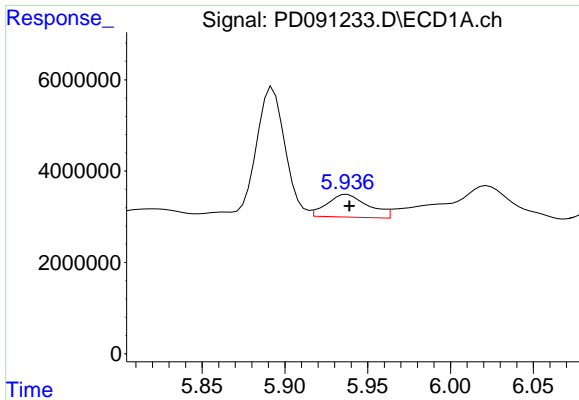
#24 Chlordane-2

R.T.: 5.239 min
 Delta R.T.: 0.004 min
 Response: 10075406
 Conc: 40.80 ng/ml



#24 Chlordane-2

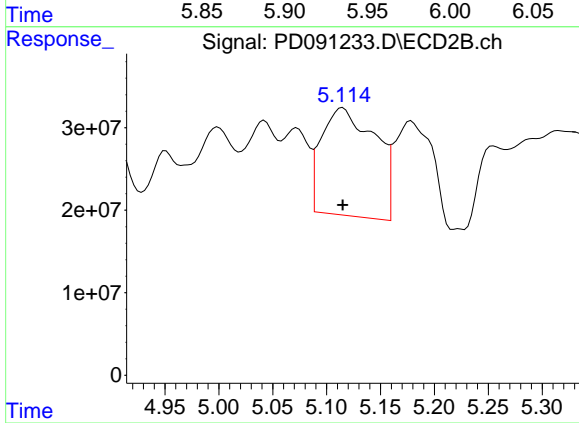
R.T.: 4.446 min
 Delta R.T.: -0.030 min
 Response: 114206280
 Conc: 65.22 ng/ml



#25 Chlordane-3

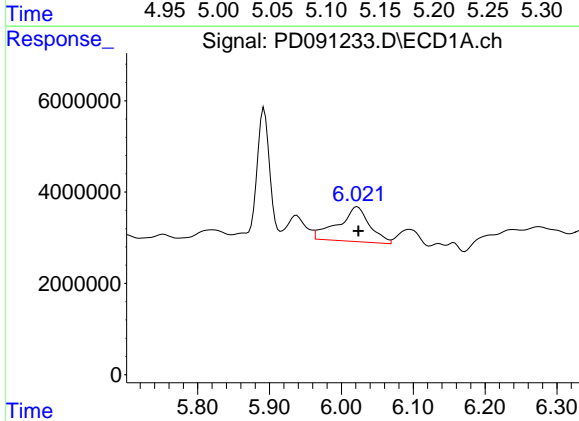
R.T.: 5.938 min
 Delta R.T.: -0.001 min
 Response: 8588828
 Conc: 8.90 ng/ml

Instrument :
 ECD_D
 ClientSampleId :



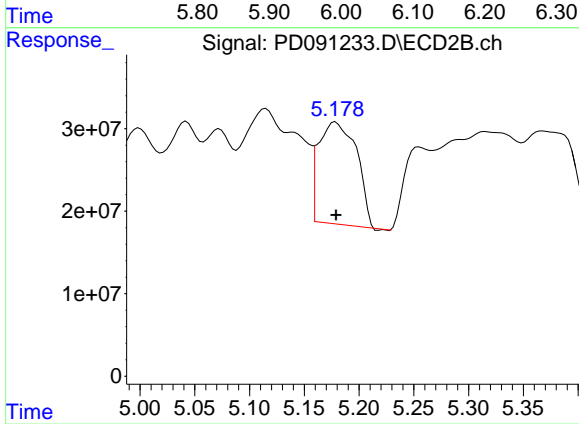
#25 Chlordane-3

R.T.: 5.115 min
 Delta R.T.: 0.000 min
 Response: 452681343
 Conc: 78.68 ng/ml



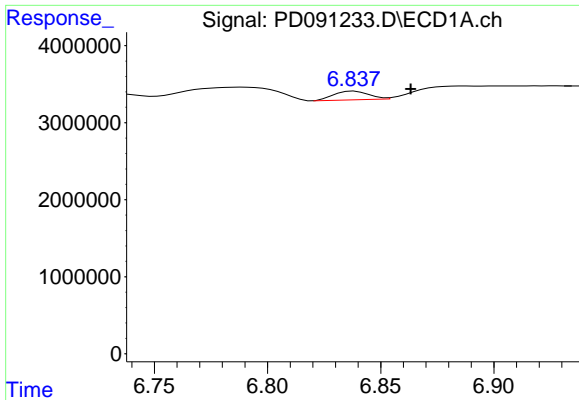
#26 Chlordane-4

R.T.: 6.022 min
 Delta R.T.: -0.001 min
 Response: 23347201
 Conc: 19.44 ng/ml



#26 Chlordane-4

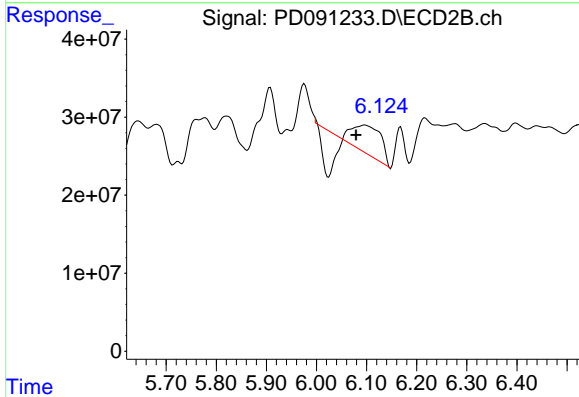
R.T.: 5.179 min
 Delta R.T.: 0.000 min
 Response: 299698639
 Conc: 62.65 ng/ml



#27 Chlordane-5

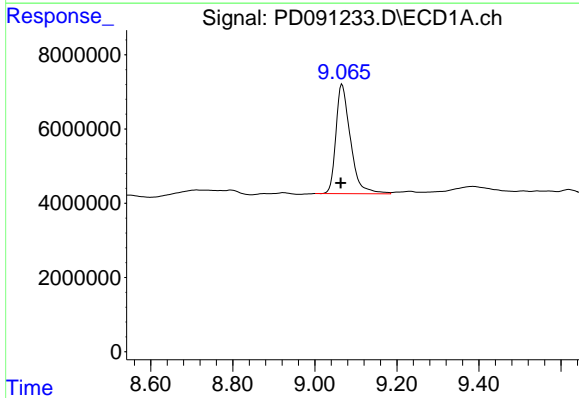
R.T.: 6.838 min
 Delta R.T.: -0.025 min
 Response: 1211622
 Conc: 6.13 ng/ml

Instrument :
 ECD_D
 ClientSampleId :



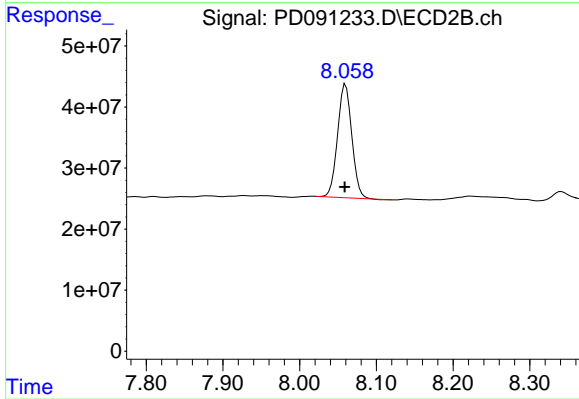
#27 Chlordane-5

R.T.: 6.096 min
 Delta R.T.: 0.018 min
 Response: 65850773
 Conc: 32.45 ng/ml



#28 Decachlorobiphenyl

R.T.: 9.067 min
 Delta R.T.: 0.003 min
 Response: 72549794
 Conc: 14.56 ng/ml



#28 Decachlorobiphenyl

R.T.: 8.060 min
 Delta R.T.: 0.001 min
 Response: 239175896
 Conc: 6.04 ng/ml