

Data Path : Z:\pestpcbsrv\HPCHEM1\ECD_D\Data\PD111725\
 Data File : PD091236.D
 Signal(s) : Signal #1: ECD1A.ch Signal #2: ECD2B.ch
 Acq On : 17 Nov 2025 21:11
 Operator : AR\AJ
 Sample : Q3649-01
 Misc :
 ALS Vial : 18 Sample Multiplier: 1

Instrument :
 ECD_D
 ClientSampleId :

Integration File signal 1: autoint1.e
 Integration File signal 2: autoint2.e
 Quant Time: Nov 18 01:11:31 2025
 Quant Method : Z:\pestpcbsrv\HPCHEM1\ECD_D\Method\PD111525.M
 Quant Title : GC Extractables
 QLast Update : Sat Nov 15 04:46:13 2025
 Response via : Initial Calibration
 Integrator: ChemStation

Volume Inj. : 1 µl
 Signal #1 Phase : ZB-MR2 Signal #2 Phase: ZB-MR2
 Signal #1 Info : 30M x 0.32mm x0.5 Signal #2 Info : 30M x 0.32mm x 0.25µm

	Compound	RT#1	RT#2	Resp#1	Resp#2	ng/ml	ng/ml

System Monitoring Compounds							
1)	SA Tetrachlo...	3.541	2.871	102.7E6	690.1E6	29.781	18.839 #
28)	SA Decachlor...	9.062	8.057	83360352	660.6E6	16.733	16.691
Target Compounds							
2)	A alpha-BHC	3.969f	3.387	420592	37683758	0.053	0.596 #
3)	MA gamma-BHC...	0.000	3.725	0	1751682	N.D.	0.030 #
4)	MA Heptachlor	4.902f	4.076	16099794	5915085	2.248	0.107 #
5)	MB Aldrin	5.257	4.362	5140208	8814086	0.708	0.156 #
6)	B beta-BHC	4.487f	4.024	4012949	3960885	1.381	0.165 #
7)	B delta-BHC	4.767	4.243	10978665	5534221	1.477	0.095 #
8)	B Heptachlo...	0.000	4.887f	0	159.4E6	N.D.	3.128 #
9)	A Endosulfan I	0.000	5.232	0	13319325	N.D.	0.278 #
10)	B gamma-Chl...	5.908f	5.139f	-243911	152.3E6	N.D.	2.788
11)	B alpha-Chl...	5.997f	0.000	74821584	0	10.871	N.D. #
13)	MA Dieldrin	0.000	5.494	0	1792168	N.D.	0.033 #
14)	MA Endrin	0.000	5.779	0	22249152	N.D.	0.492 #
15)	B Endosulfa...	6.763f	6.074	25678555	168.1E6	4.619	3.600
17)	MA 4,4'-DDT	0.000	6.174	0	410.4E6	N.D.	10.488 #
18)	B Endrin al...	6.936f	6.251	4991444	67471577	1.198	1.912 #
20)	A Methoxychlor	7.475	6.726f	4814316	11965909	2.214	0.597 #
21)	B Endrin ke...	7.605f	6.958f	5474803	32638486	0.972	0.641 #
22)	Mirex	8.114	7.151f	-243374	101.4E6	N.D.	3.060
24)	Chlordane-2	5.257f	4.489	5140208	2851085	20.816	1.628 #
25)	Chlordane-3	0.000	5.139f	0	152.3E6	N.D.	26.473 #
26)	Chlordane-4	5.997f	5.139f	74821584	152.3E6	62.289	31.842 #
27)	Chlordane-5	0.000	6.074	0	168.1E6	N.D.	82.824 #

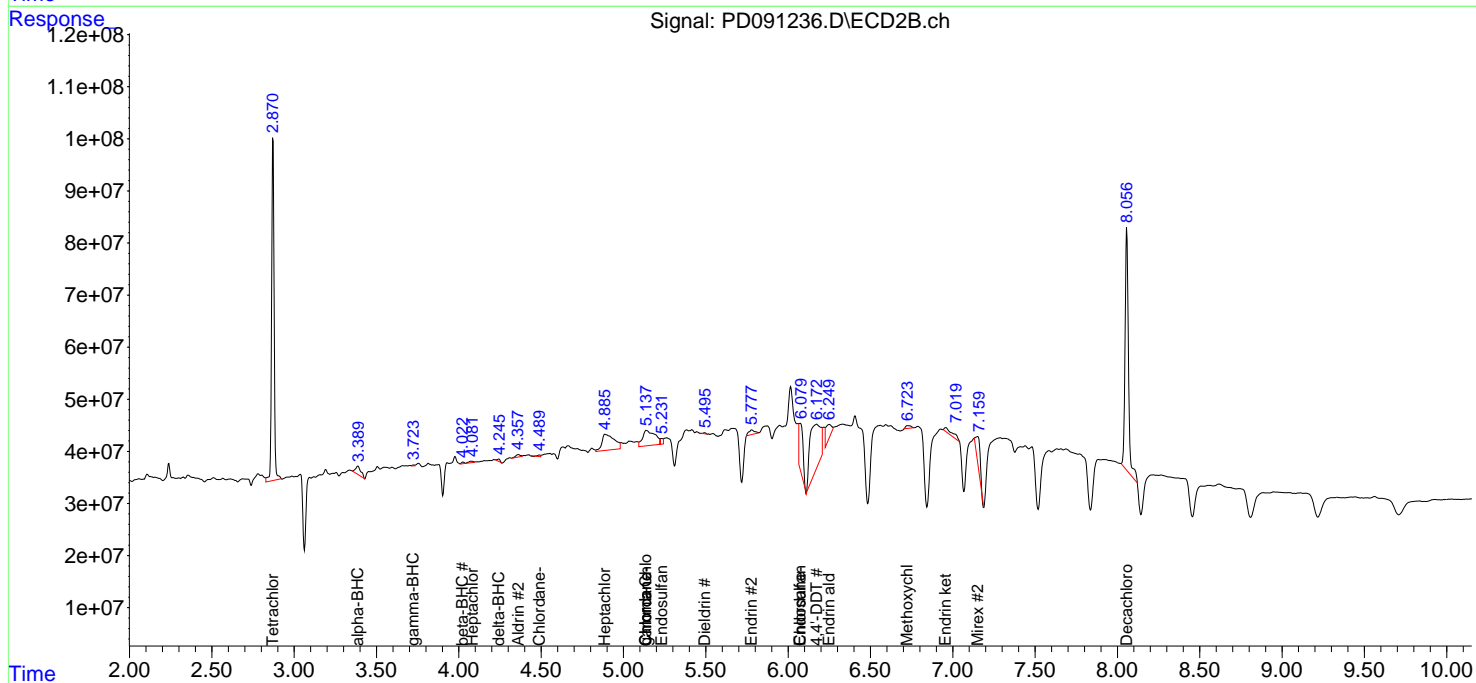
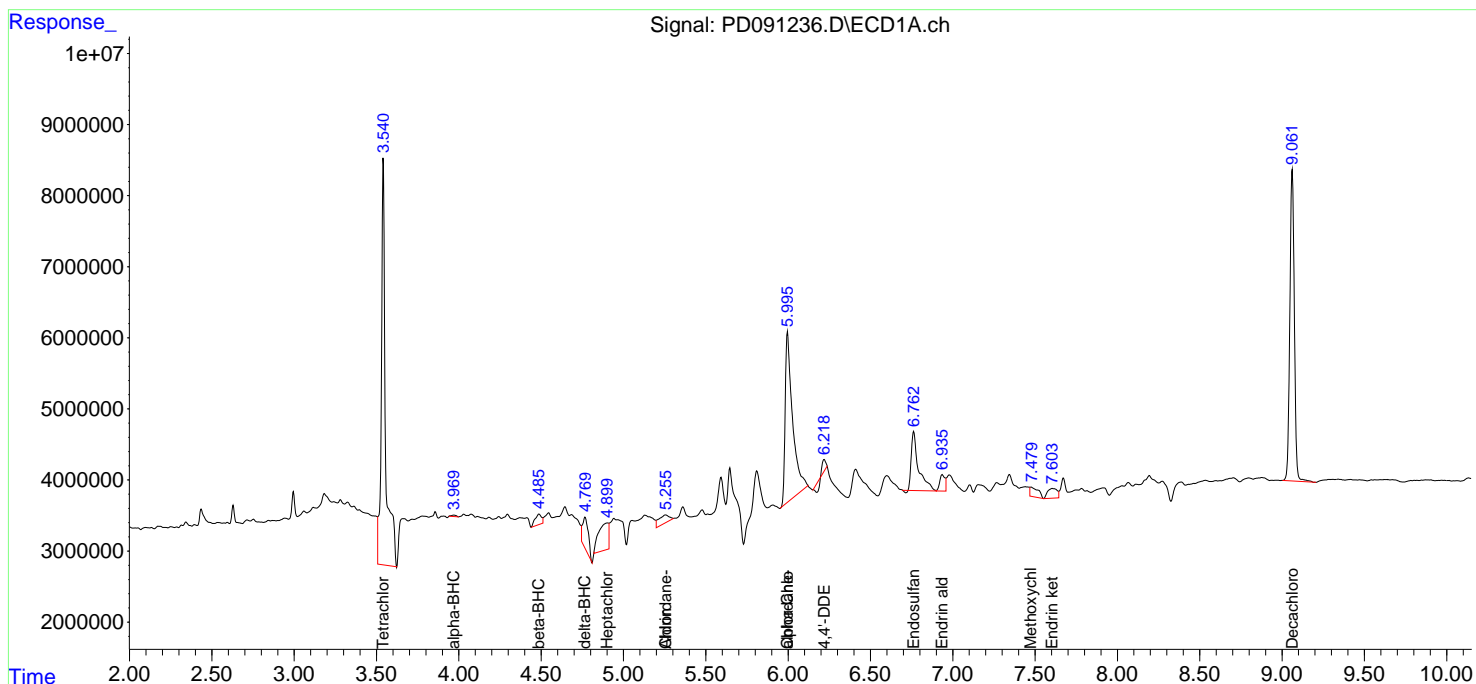
(f)=RT Delta > 1/2 Window (#)=Amounts differ by > 25% (m)=manual int.

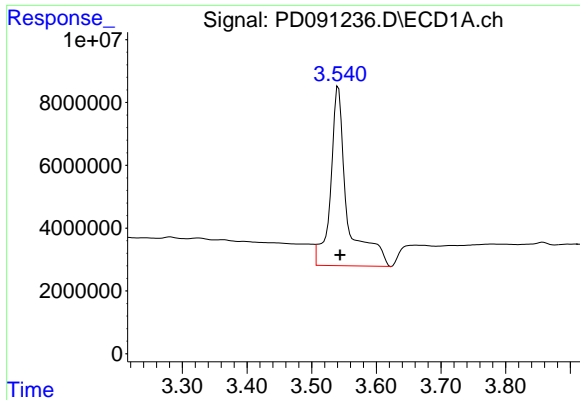
Data Path : Z:\pestpcbsrv\HPCHEM1\ECD_D\Data\PD111725\
 Data File : PD091236.D
 Signal(s) : Signal #1: ECD1A.ch Signal #2: ECD2B.ch
 Acq On : 17 Nov 2025 21:11
 Operator : AR\AJ
 Sample : Q3649-01
 Misc :
 ALS Vial : 18 Sample Multiplier: 1

Instrument :
 ECD_D
 ClientSampleId :

Integration File signal 1: autoint1.e
 Integration File signal 2: autoint2.e
 Quant Time: Nov 18 01:11:31 2025
 Quant Method : Z:\pestpcbsrv\HPCHEM1\ECD_D\Method\PD111525.M
 Quant Title : GC Extractables
 QLast Update : Sat Nov 15 04:46:13 2025
 Response via : Initial Calibration
 Integrator: ChemStation

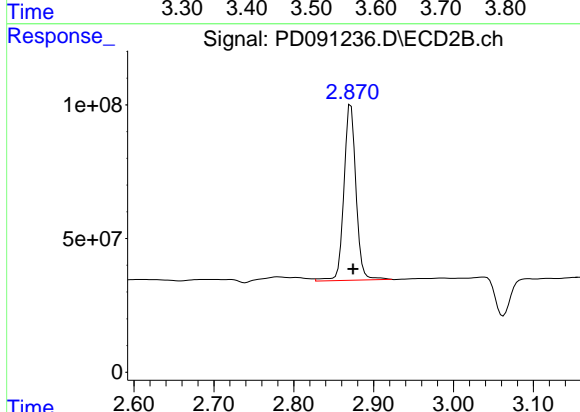
Volume Inj. : 1 µl
 Signal #1 Phase : ZB-MR1 Signal #2 Phase: ZB-MR2
 Signal #1 Info : 30M x 0.32mm x0.5 Signal #2 Info : 30M x 0.32mm x 0.25µm



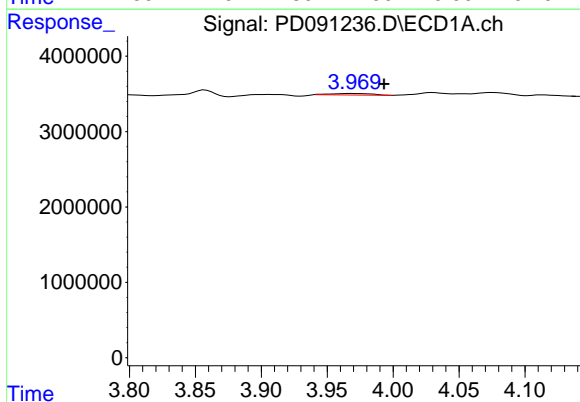


#1 Tetrachloro-m-xylene
 R.T.: 3.541 min
 Delta R.T.: -0.003 min
 Response: 102704813
 Conc: 29.78 ng/ml

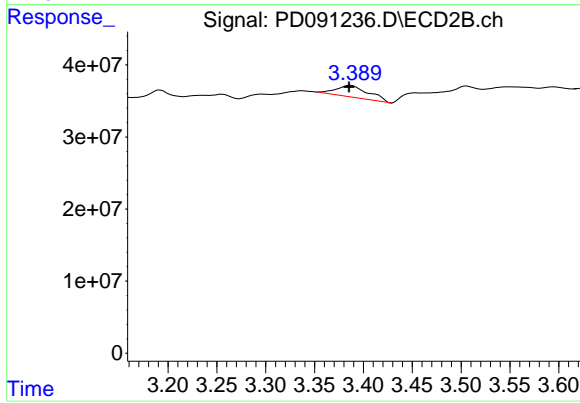
Instrument :
 ECD_D
 ClientSampleId :



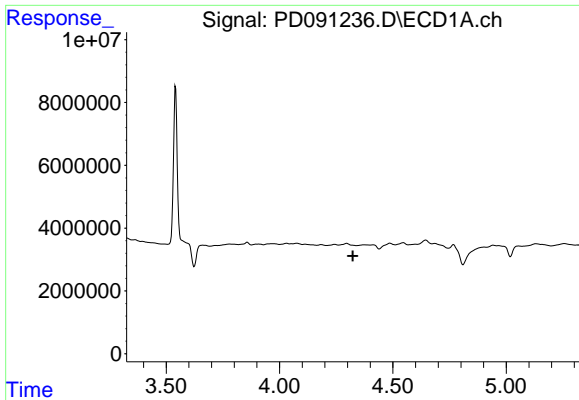
#1 Tetrachloro-m-xylene
 R.T.: 2.871 min
 Delta R.T.: -0.003 min
 Response: 690079947
 Conc: 18.84 ng/ml



#2 alpha-BHC
 R.T.: 3.969 min
 Delta R.T.: -0.024 min
 Response: 420592
 Conc: 0.05 ng/ml



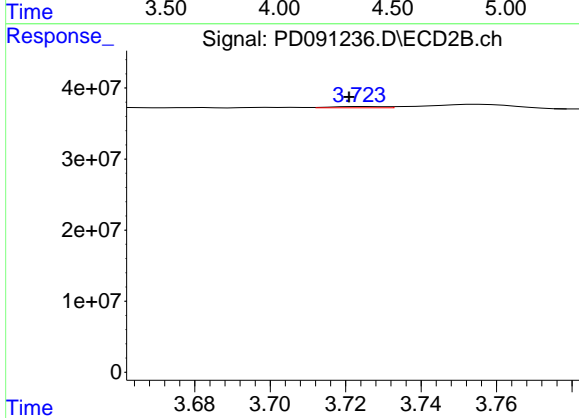
#2 alpha-BHC
 R.T.: 3.387 min
 Delta R.T.: 0.002 min
 Response: 37683758
 Conc: 0.60 ng/ml



#3 gamma-BHC (Lindane)

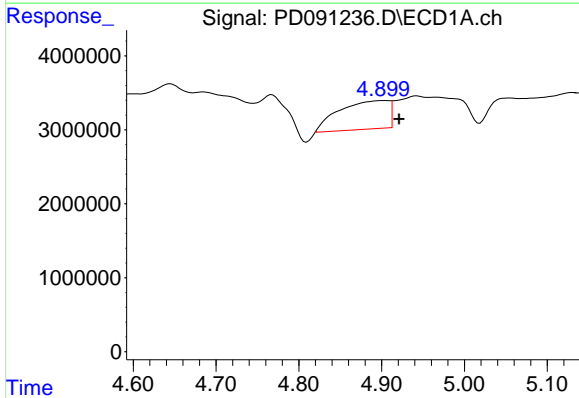
R.T.: 0.000 min
 Exp R.T.: 4.324 min
 Response: 0
 Conc: N.D.

Instrument :
 ECD_D
 ClientSampleId :



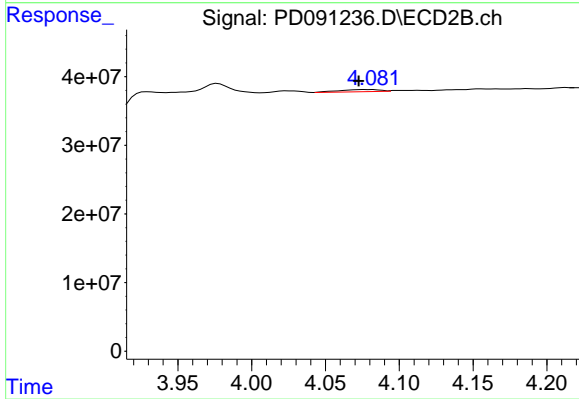
#3 gamma-BHC (Lindane)

R.T.: 3.725 min
 Delta R.T.: 0.004 min
 Response: 1751682
 Conc: 0.03 ng/ml



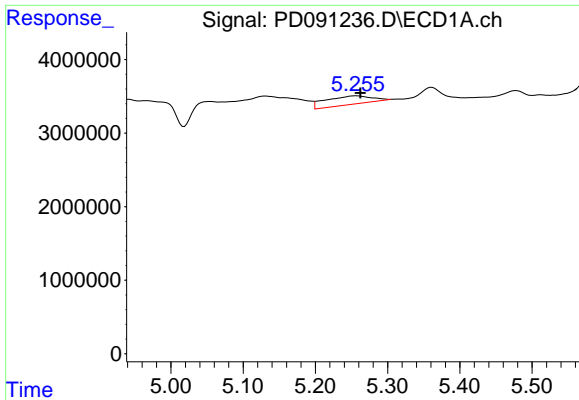
#4 Heptachlor

R.T.: 4.902 min
 Delta R.T.: -0.019 min
 Response: 16099794
 Conc: 2.25 ng/ml



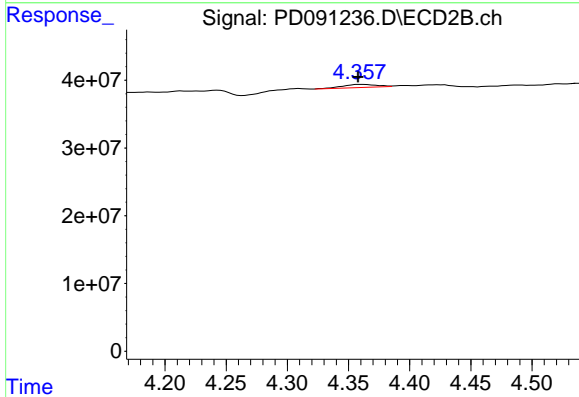
#4 Heptachlor

R.T.: 4.076 min
 Delta R.T.: 0.003 min
 Response: 5915085
 Conc: 0.11 ng/ml

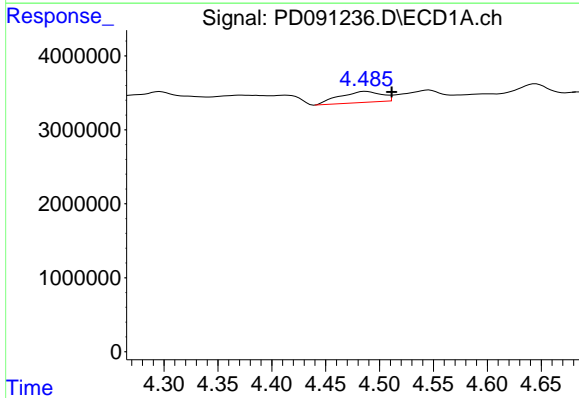


#5 Aldrin
 R.T.: 5.257 min
 Delta R.T.: -0.005 min
 Response: 5140208
 Conc: 0.71 ng/ml

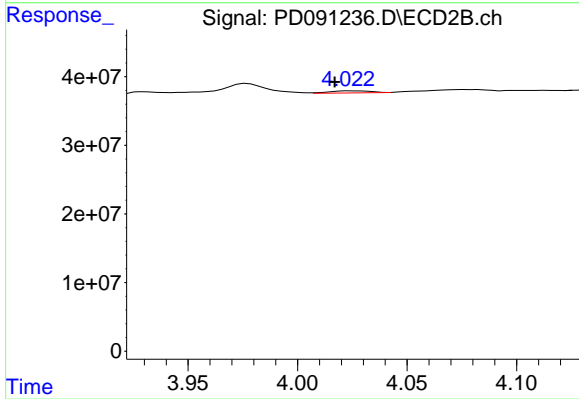
Instrument :
 ECD_D
 ClientSampleId :



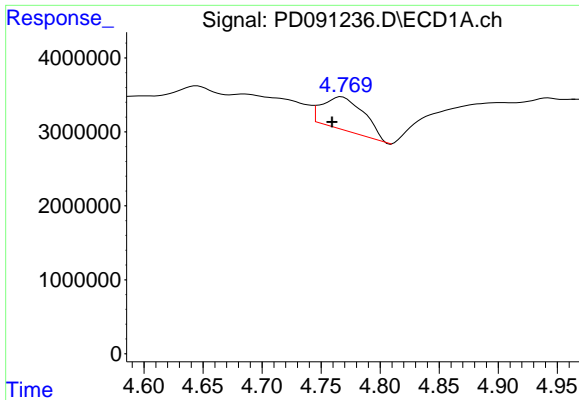
#5 Aldrin
 R.T.: 4.362 min
 Delta R.T.: 0.004 min
 Response: 8814086
 Conc: 0.16 ng/ml



#6 beta-BHC
 R.T.: 4.487 min
 Delta R.T.: -0.024 min
 Response: 4012949
 Conc: 1.38 ng/ml



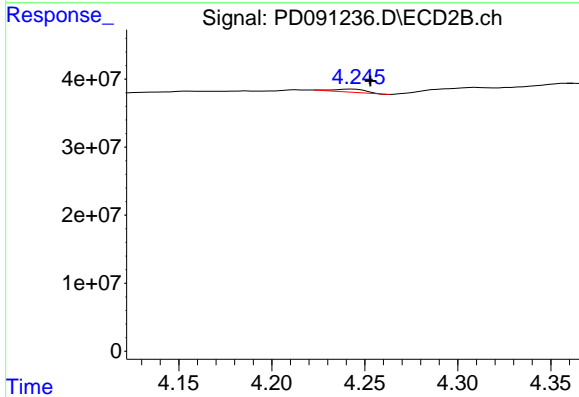
#6 beta-BHC
 R.T.: 4.024 min
 Delta R.T.: 0.008 min
 Response: 3960885
 Conc: 0.16 ng/ml



#7 delta-BHC

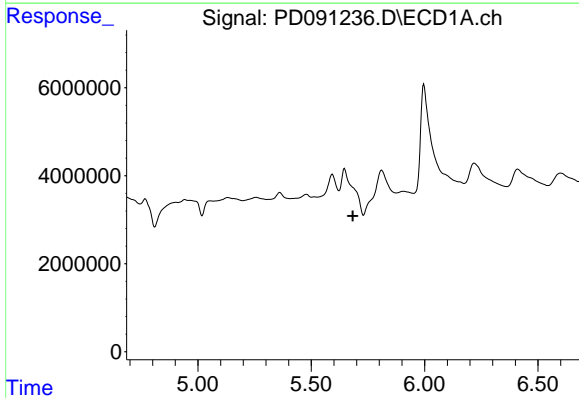
R.T.: 4.767 min
 Delta R.T.: 0.008 min
 Response: 10978665
 Conc: 1.48 ng/ml

Instrument :
 ECD_D
 ClientSampleId :



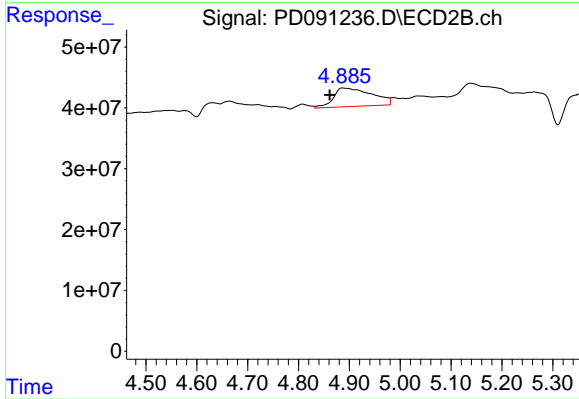
#7 delta-BHC

R.T.: 4.243 min
 Delta R.T.: -0.010 min
 Response: 5534221
 Conc: 0.09 ng/ml



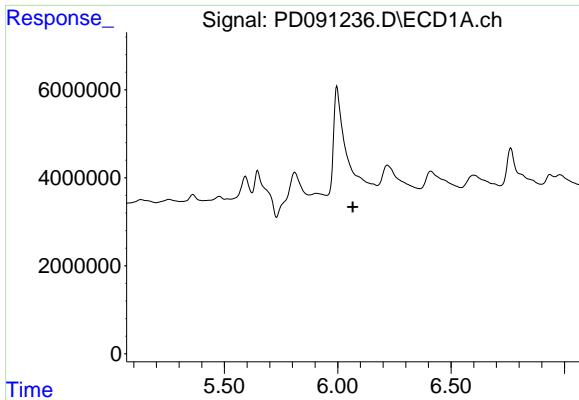
#8 Heptachlor epoxide

R.T.: 0.000 min
 Exp R.T. : 5.683 min
 Response: 0
 Conc: N.D.



#8 Heptachlor epoxide

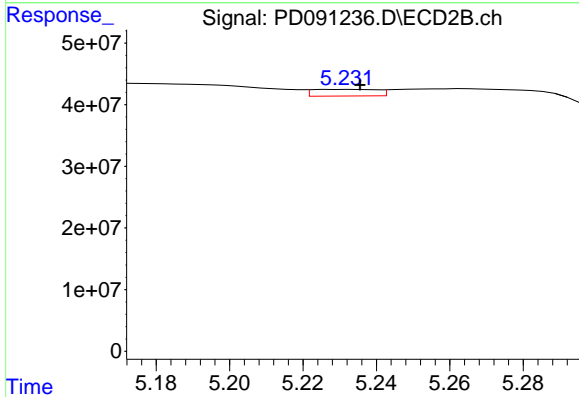
R.T.: 4.887 min
 Delta R.T.: 0.026 min
 Response: 159403137
 Conc: 3.13 ng/ml



#9 Endosulfan I

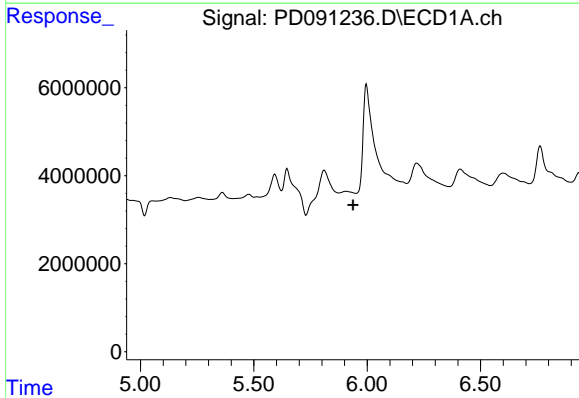
R.T.: 0.000 min
 Exp R.T.: 6.066 min
 Response: 0
 Conc: N.D.

Instrument :
 ECD_D
 ClientSampleId :



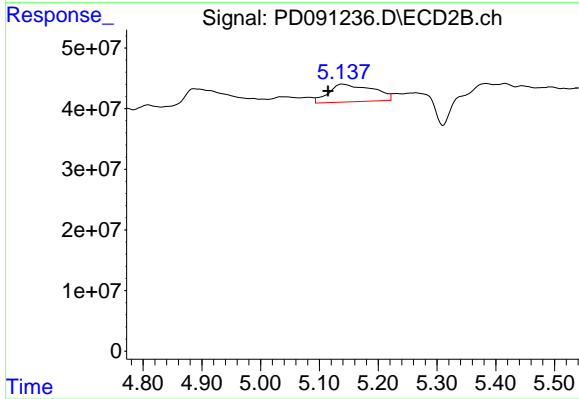
#9 Endosulfan I

R.T.: 5.232 min
 Delta R.T.: -0.003 min
 Response: 13319325
 Conc: 0.28 ng/ml



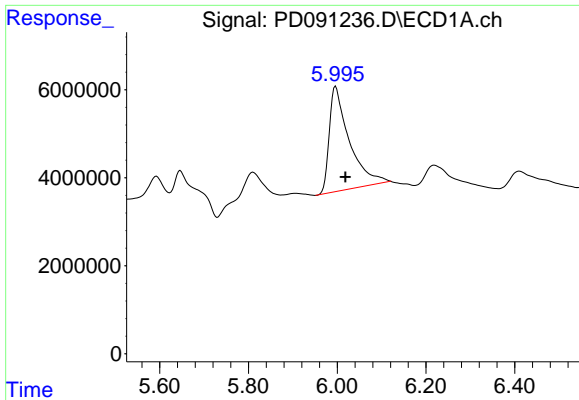
#10 gamma-Chlordane

R.T.: 5.908 min
 Delta R.T.: -0.030 min
 Response: -243911
 Conc: N.D.



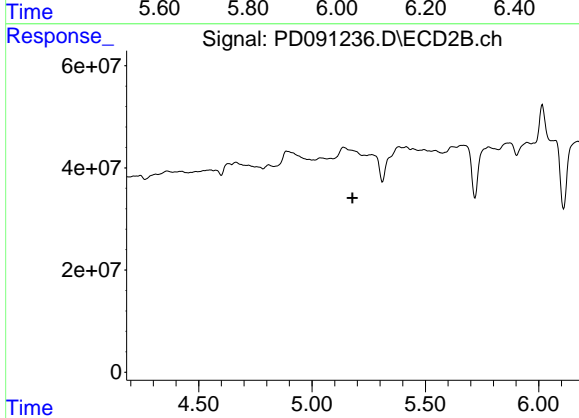
#10 gamma-Chlordane

R.T.: 5.139 min
 Delta R.T.: 0.024 min
 Response: 152317069
 Conc: 2.79 ng/ml

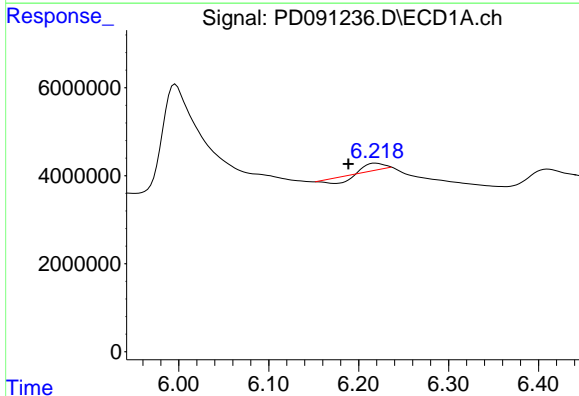


#11 alpha-Chlordane
 R.T.: 5.997 min
 Delta R.T.: -0.022 min
 Response: 74821584
 Conc: 10.87 ng/ml

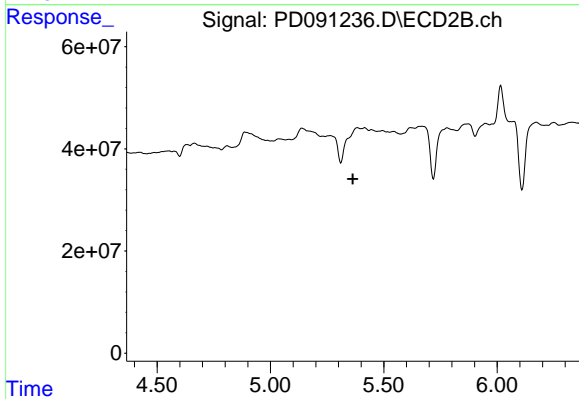
Instrument :
 ECD_D
 ClientSampleId :



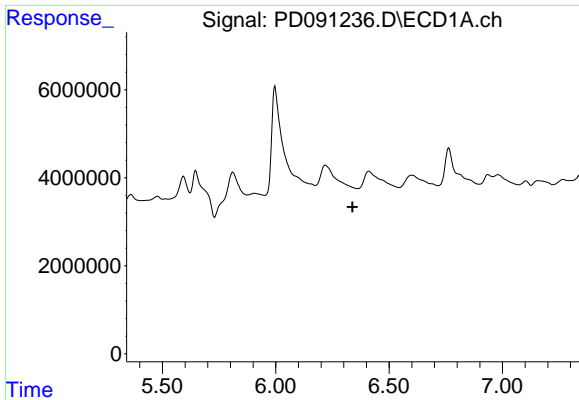
#11 alpha-Chlordane
 R.T.: 0.000 min
 Exp R.T. : 5.179 min
 Response: 0
 Conc: N.D.



#12 4,4'-DDE
 R.T.: 6.219 min
 Delta R.T.: 0.030 min
 Response: 687290
 Conc: 0.12 ng/ml



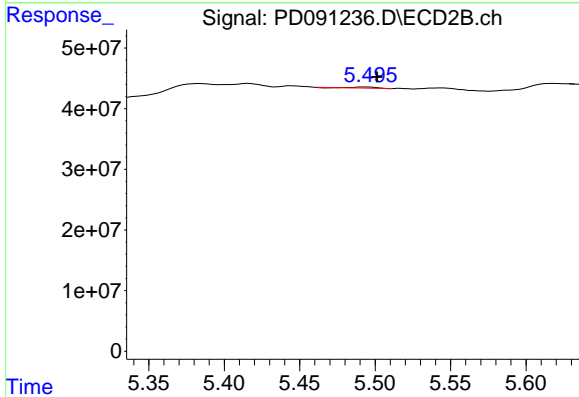
#12 4,4'-DDE
 R.T.: 5.385 min
 Delta R.T.: 0.022 min
 Response: -41480836
 Conc: N.D.



#13 Dieldrin

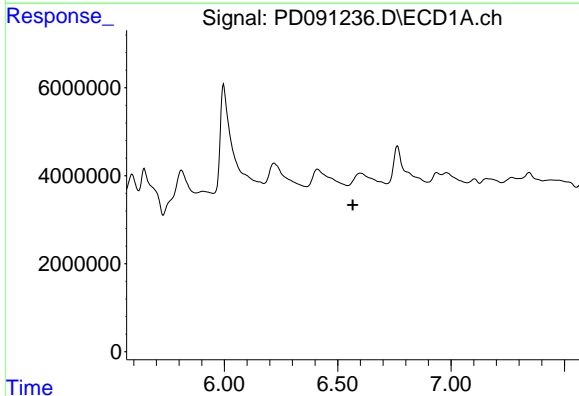
R.T.: 0.000 min
 Exp R.T. : 6.339 min
 Response: 0
 Conc: N.D.

Instrument :
 ECD_D
 ClientSampleId :



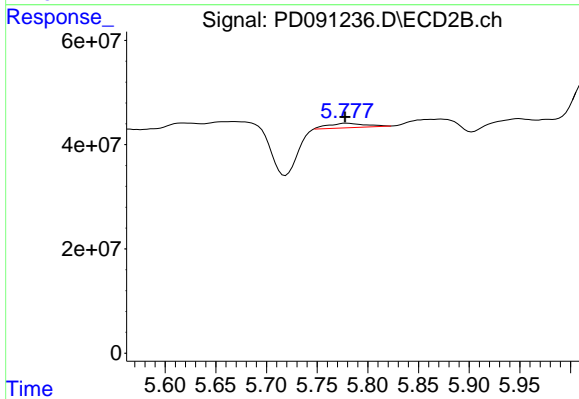
#13 Dieldrin

R.T.: 5.494 min
 Delta R.T.: -0.008 min
 Response: 1792168
 Conc: 0.03 ng/ml



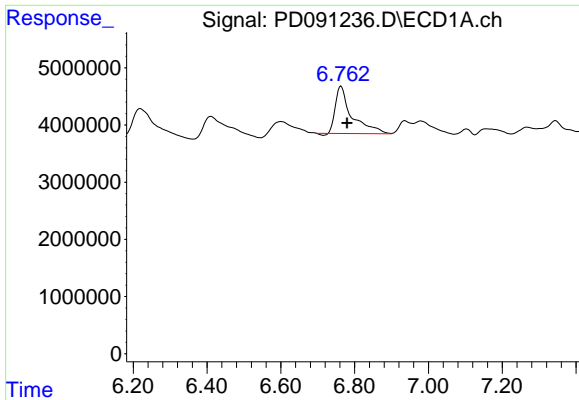
#14 Endrin

R.T.: 0.000 min
 Exp R.T. : 6.566 min
 Response: 0
 Conc: N.D.



#14 Endrin

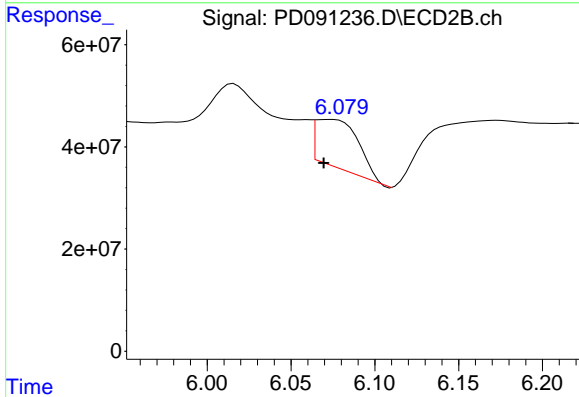
R.T.: 5.779 min
 Delta R.T.: 0.001 min
 Response: 22249152
 Conc: 0.49 ng/ml



#15 Endosulfan II

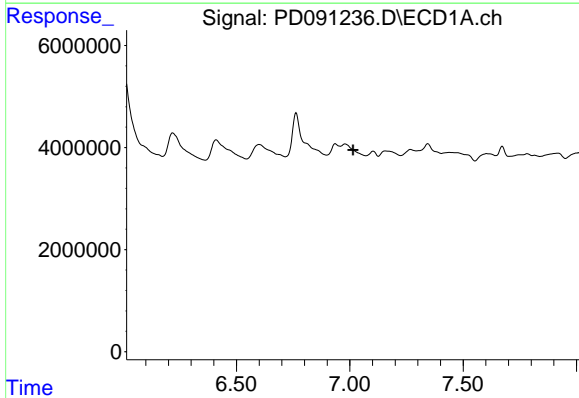
R.T.: 6.763 min
 Delta R.T.: -0.016 min
 Response: 25678555
 Conc: 4.62 ng/ml

Instrument :
 ECD_D
 ClientSampleId :



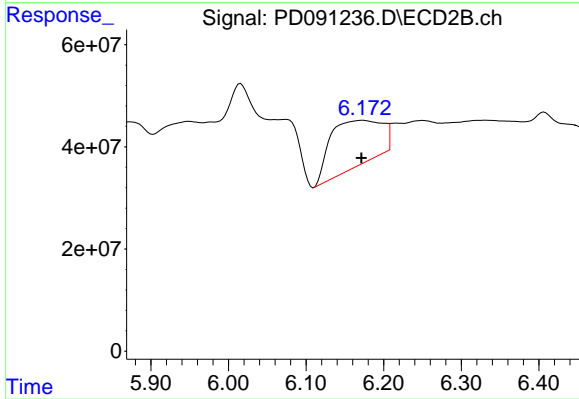
#15 Endosulfan II

R.T.: 6.074 min
 Delta R.T.: 0.004 min
 Response: 168065826
 Conc: 3.60 ng/ml



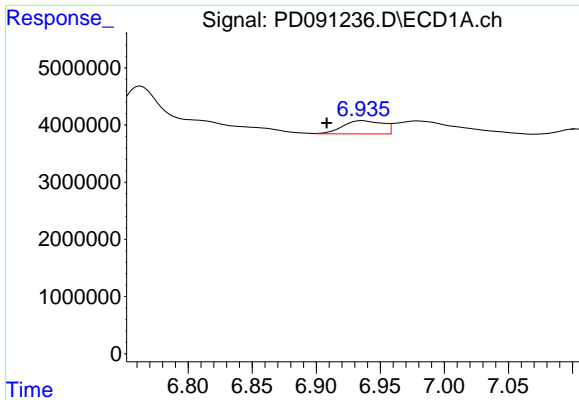
#17 4,4'-DDT

R.T.: 0.000 min
 Exp R.T. : 7.014 min
 Response: 0
 Conc: N.D.



#17 4,4'-DDT

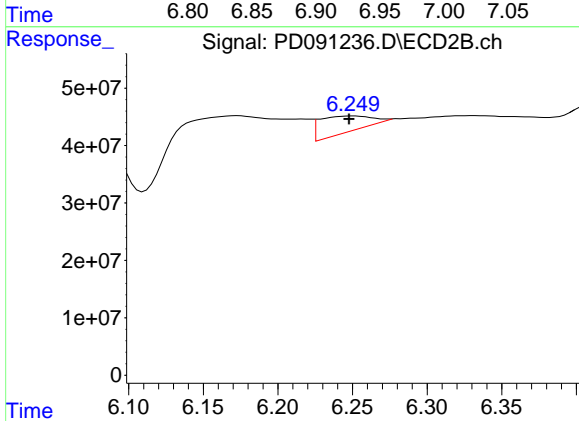
R.T.: 6.174 min
 Delta R.T.: 0.002 min
 Response: 410415834
 Conc: 10.49 ng/ml



#18 Endrin aldehyde

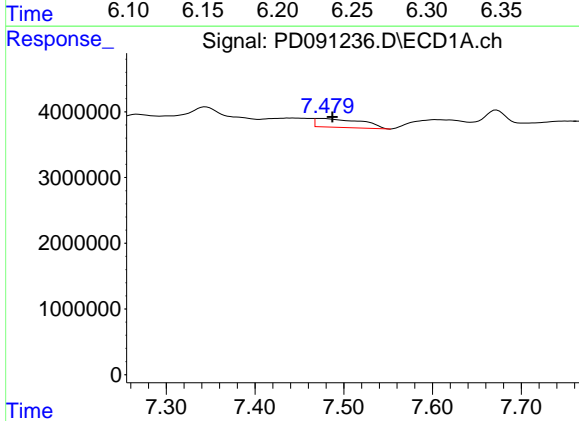
R.T.: 6.936 min
 Delta R.T.: 0.028 min
 Response: 4991444
 Conc: 1.20 ng/ml

Instrument :
 ECD_D
 ClientSampleId :



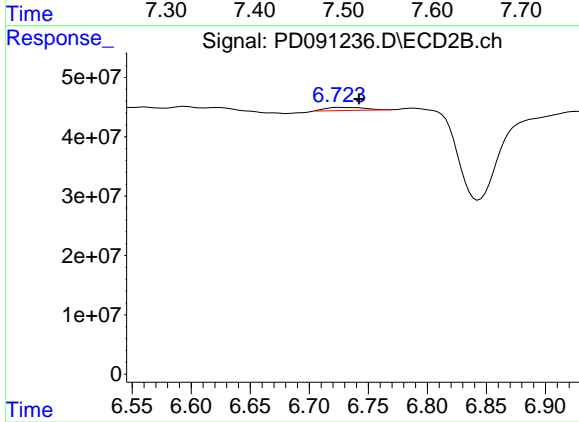
#18 Endrin aldehyde

R.T.: 6.251 min
 Delta R.T.: 0.003 min
 Response: 67471577
 Conc: 1.91 ng/ml



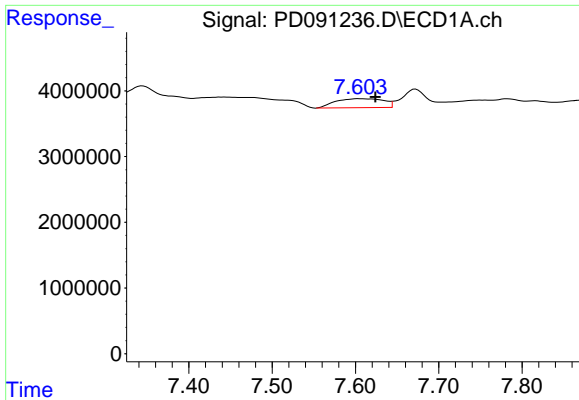
#20 Methoxychlor

R.T.: 7.475 min
 Delta R.T.: -0.012 min
 Response: 4814316
 Conc: 2.21 ng/ml



#20 Methoxychlor

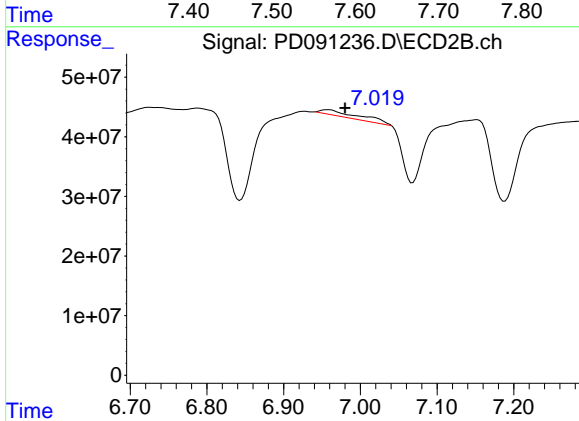
R.T.: 6.726 min
 Delta R.T.: -0.016 min
 Response: 11965909
 Conc: 0.60 ng/ml



#21 Endrin ketone

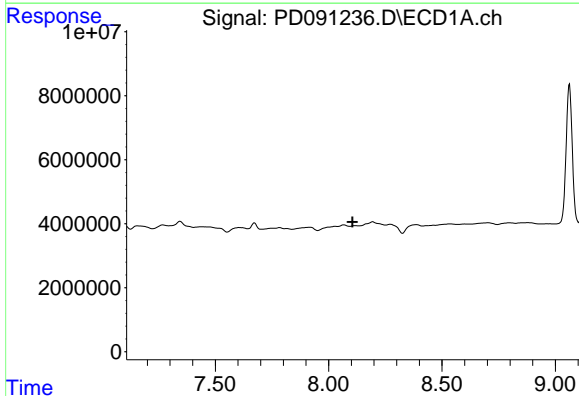
R.T.: 7.605 min
 Delta R.T.: -0.019 min
 Response: 5474803
 Conc: 0.97 ng/ml

Instrument :
 ECD_D
 ClientSampleId :



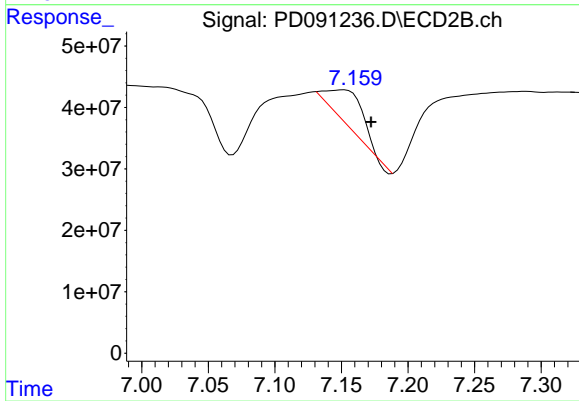
#21 Endrin ketone

R.T.: 6.958 min
 Delta R.T.: -0.022 min
 Response: 32638486
 Conc: 0.64 ng/ml



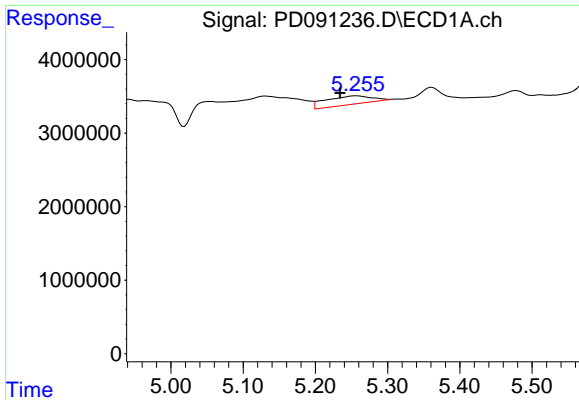
#22 Mirex

R.T.: 8.114 min
 Delta R.T.: 0.008 min
 Response: -243374
 Conc: N.D.



#22 Mirex

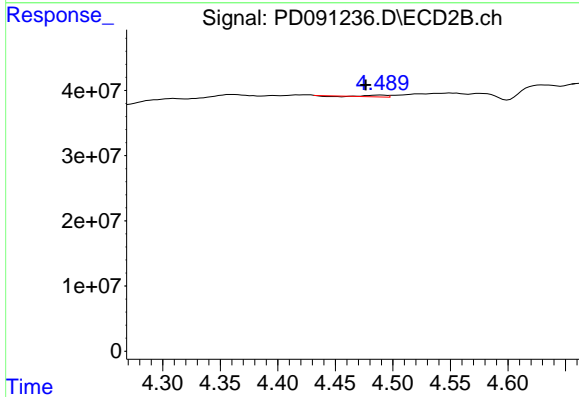
R.T.: 7.151 min
 Delta R.T.: -0.021 min
 Response: 101408064
 Conc: 3.06 ng/ml



#24 Chlordane-2

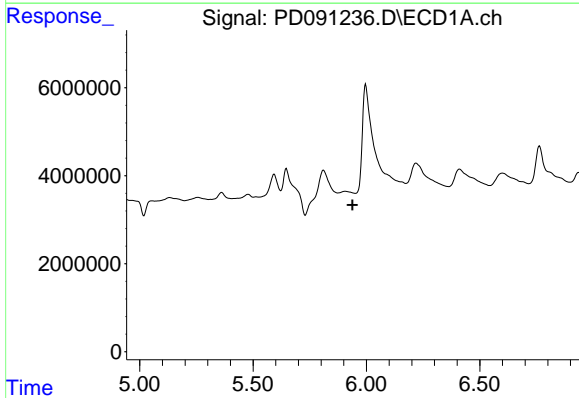
R.T.: 5.257 min
 Delta R.T.: 0.023 min
 Response: 5140208
 Conc: 20.82 ng/ml

Instrument :
 ECD_D
 ClientSampleId :



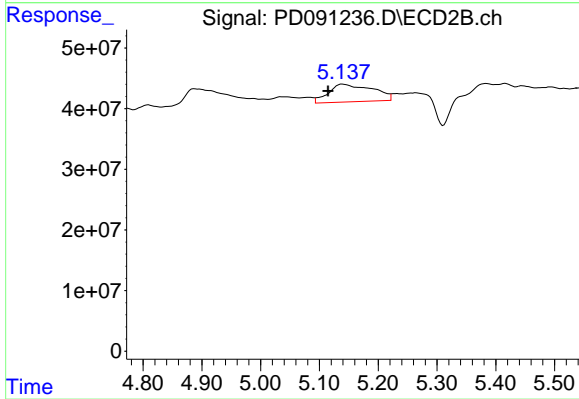
#24 Chlordane-2

R.T.: 4.489 min
 Delta R.T.: 0.012 min
 Response: 2851085
 Conc: 1.63 ng/ml



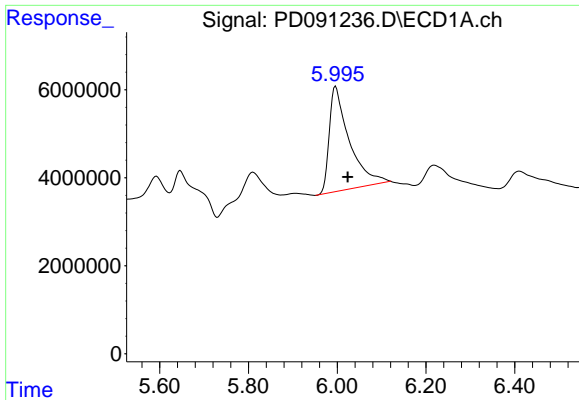
#25 Chlordane-3

R.T.: 0.000 min
 Exp R.T. : 5.939 min
 Response: 0
 Conc: N.D.



#25 Chlordane-3

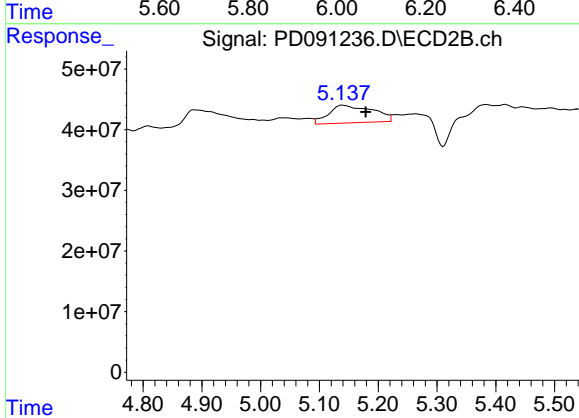
R.T.: 5.139 min
 Delta R.T.: 0.024 min
 Response: 152317069
 Conc: 26.47 ng/ml



#26 Chlordane-4

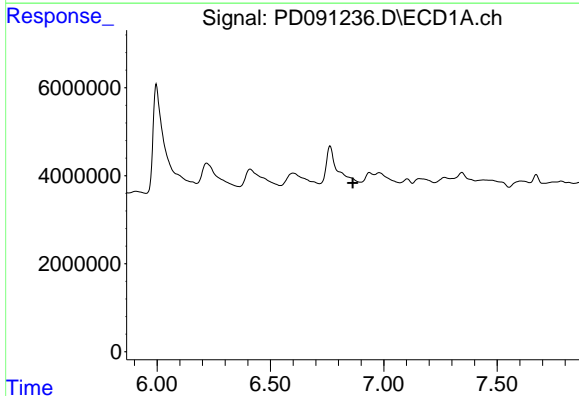
R.T.: 5.997 min
 Delta R.T.: -0.027 min
 Response: 74821584
 Conc: 62.29 ng/ml

Instrument :
 ECD_D
 ClientSampleId :



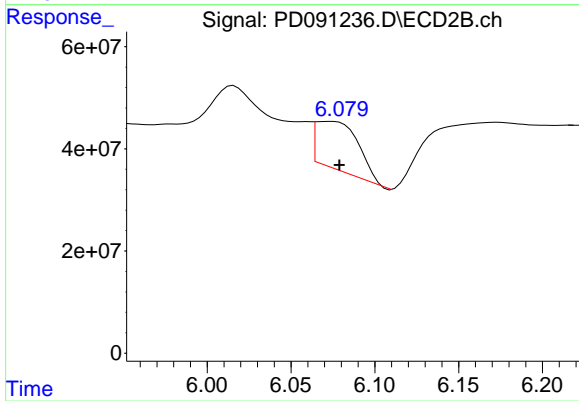
#26 Chlordane-4

R.T.: 5.139 min
 Delta R.T.: -0.040 min
 Response: 152317069
 Conc: 31.84 ng/ml



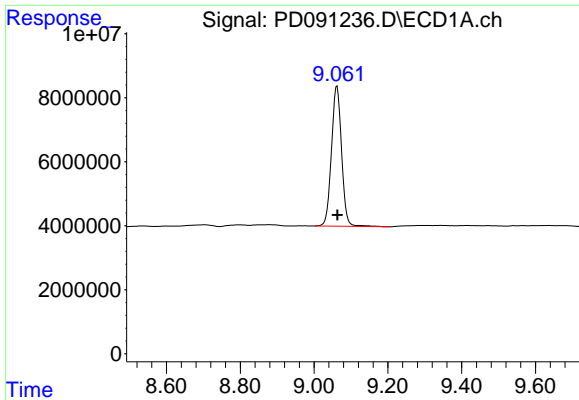
#27 Chlordane-5

R.T.: 0.000 min
 Exp R.T. : 6.863 min
 Response: 0
 Conc: N.D.



#27 Chlordane-5

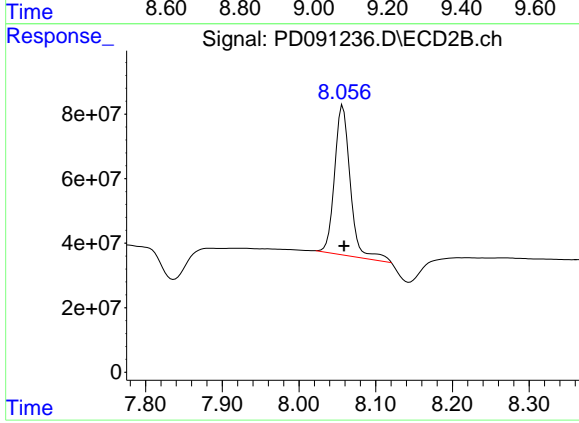
R.T.: 6.074 min
 Delta R.T.: -0.005 min
 Response: 168065826
 Conc: 82.82 ng/ml



#28 Decachlorobiphenyl

R.T.: 9.062 min
Delta R.T.: -0.001 min
Response: 83360352
Conc: 16.73 ng/ml

Instrument :
ECD_D
ClientSampleId :



#28 Decachlorobiphenyl

R.T.: 8.057 min
Delta R.T.: -0.001 min
Response: 660556995
Conc: 16.69 ng/ml