

Data Path : Z:\pestpcbsrv\HPCHEM1\ECD_D\Data\PD111725\
 Data File : PD091238.D
 Signal(s) : Signal #1: ECD1A.ch Signal #2: ECD2B.ch
 Acq On : 17 Nov 2025 21:38
 Operator : AR\AJ
 Sample : Q3649-03MS
 Misc :
 ALS Vial : 20 Sample Multiplier: 1

Instrument :
 ECD_D
 ClientSampleId :

Integration File signal 1: autoint1.e
 Integration File signal 2: autoint2.e
 Quant Time: Nov 18 01:13:06 2025
 Quant Method : Z:\pestpcbsrv\HPCHEM1\ECD_D\Method\PD111525.M
 Quant Title : GC Extractables
 QLast Update : Sat Nov 15 04:46:13 2025
 Response via : Initial Calibration
 Integrator: ChemStation

Volume Inj. : 1 µl
 Signal #1 Phase : ZB-MR2 Signal #2 Phase: ZB-MR2
 Signal #1 Info : 30M x 0.32mm x0.5 Signal #2 Info : 30M x 0.32mm x 0.25µm

	Compound	RT#1	RT#2	Resp#1	Resp#2	ng/ml	ng/ml

System Monitoring Compounds							
1)	SA Tetrachlo...	3.542	2.872	99689290	635.9E6	28.907	17.359 #
28)	SA Decachlor...	9.063	8.056	71586916	478.7E6	14.369	12.097
Target Compounds							
2)	A alpha-BHC	3.992	3.383	364.1E6	2873.2E6	45.540	45.460
3)	MA gamma-BHC...	4.322	3.719	285.3E6	2552.0E6	38.172	44.136
4)	MA Heptachlor	4.919	4.071	337.9E6	2498.2E6	47.187	45.249
5)	MB Aldrin	5.261	4.356	314.2E6	2450.9E6	43.303	43.410
6)	B beta-BHC	4.510	4.015	123.5E6	1134.9E6	42.505	47.232
7)	B delta-BHC	4.758	4.251	323.0E6	2524.8E6	43.455	43.175
8)	Heptachlo...	5.682	4.859	271.4E6	2174.4E6	41.768	42.671
9)	A Endosulfan I	6.065	5.234	269.4E6	1800.6E6	43.849	37.629
10)	B gamma-Chl...	5.937	5.112	261.7E6	2538.7E6	40.263	46.474
11)	B alpha-Chl...	6.018	5.177	289.1E6	2317.7E6	42.000	44.289
12)	B 4,4'-DDE	6.188	5.361	238.6E6	2216.9E6	41.145	41.482
13)	MA Dieldrin	6.338	5.500	403.0E6	3265.2E6	62.343	60.121
14)	MA Endrin	6.565	5.777	241.3E6	2030.5E6	48.624	44.930
15)	B Endosulfa...	6.778	6.068	243.5E6	1934.0E6	43.797	41.430
16)	A 4,4'-DDD	6.697	5.916	201.8E6	1598.2E6	41.083	32.704
17)	MA 4,4'-DDT	7.013	6.170	230.3E6	2009.2E6	55.683	51.345
18)	B Endrin al...	6.907	6.246	180.3E6	1384.2E6	43.274	39.224
19)	B Endosulfa...	7.142	6.470	212.4E6	1729.0E6	41.286	38.565
20)	A Methoxychlor	7.486	6.740	106.7E6	804.5E6	49.093	40.123
21)	B Endrin ke...	7.622	6.979	240.9E6	1551.5E6	42.759	30.448 #
22)	Mirex	8.105	7.171	117.8E6	1070.3E6	33.116	32.297
23)	Chlordane-1	4.680f	3.887	8494738	49755029	34.523	28.922
24)	Chlordane-2	5.261f	4.492	314.2E6	8523399	1272.529	4.868 #
25)	Chlordane-3	5.937	5.112	261.7E6	2538.7E6	271.280	441.247 #
26)	Chlordane-4	6.018	5.177	289.1E6	2317.7E6	240.659	484.518 #
27)	Chlordane-5	6.862	6.068	1186074	1934.0E6	6.003	953.061 #

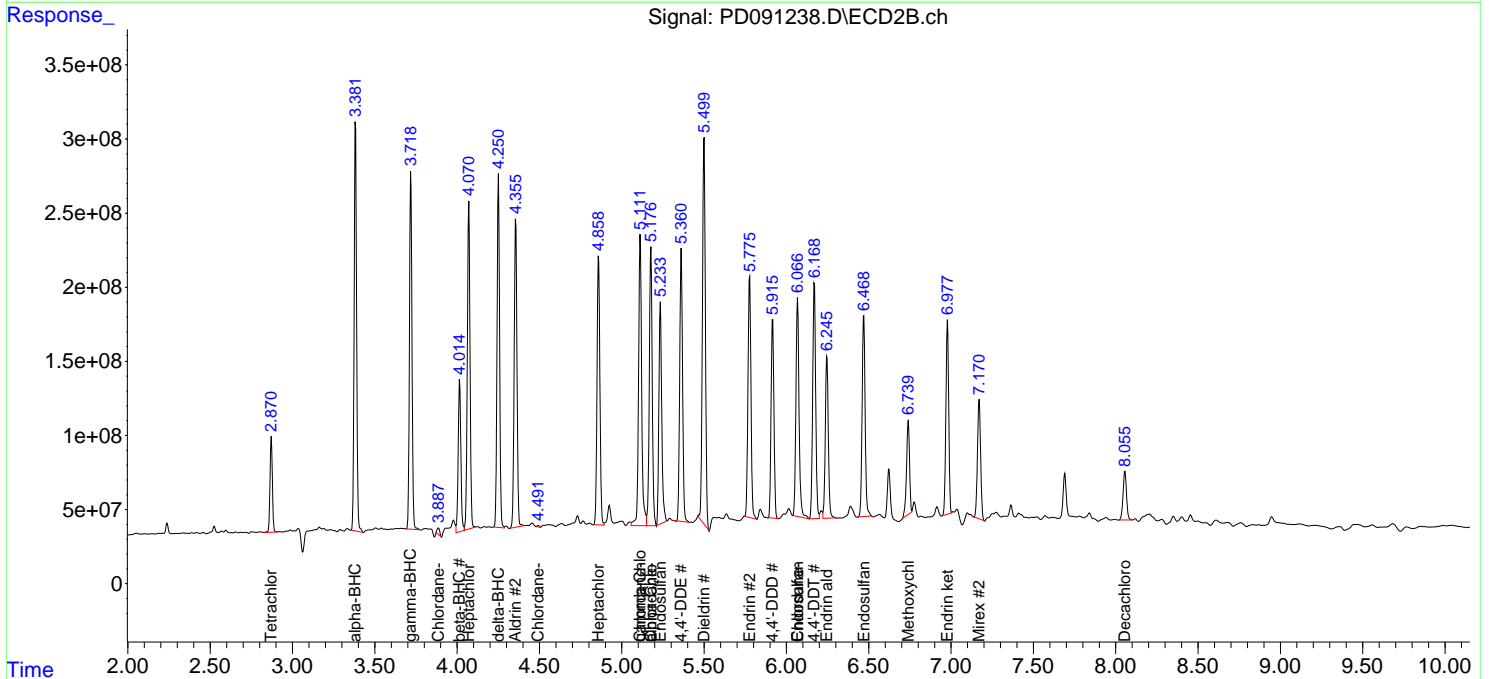
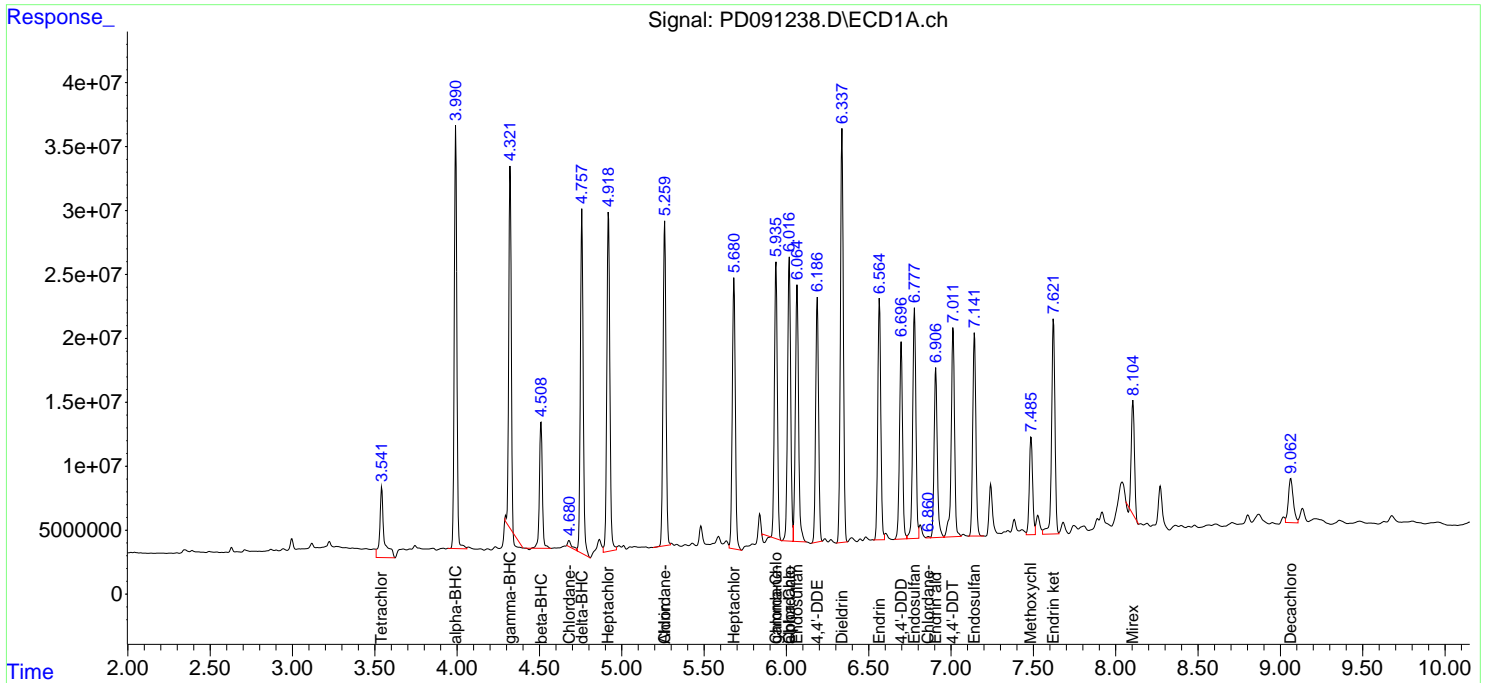
(f)=RT Delta > 1/2 Window (#)=Amounts differ by > 25% (m)=manual int.

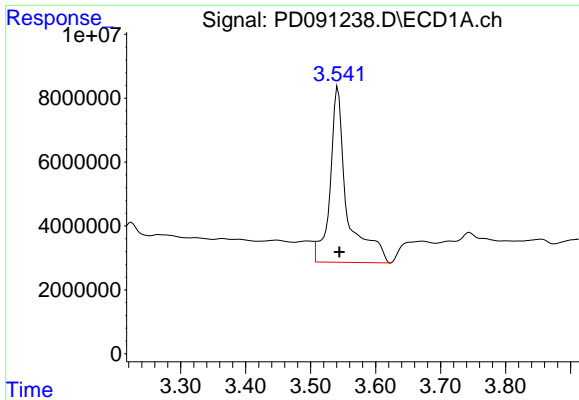
Data Path : Z:\pestpcbsrv\HPCHEM1\ECD_D\Data\PD111725\
 Data File : PD091238.D
 Signal(s) : Signal #1: ECD1A.ch Signal #2: ECD2B.ch
 Acq On : 17 Nov 2025 21:38
 Operator : AR\AJ
 Sample : Q3649-03MS
 Misc :
 ALS Vial : 20 Sample Multiplier: 1

Instrument :
 ECD_D
 ClientSampleId :

Integration File signal 1: autoint1.e
 Integration File signal 2: autoint2.e
 Quant Time: Nov 18 01:13:06 2025
 Quant Method : Z:\pestpcbsrv\HPCHEM1\ECD_D\Method\PD111525.M
 Quant Title : GC Extractables
 QLast Update : Sat Nov 15 04:46:13 2025
 Response via : Initial Calibration
 Integrator: ChemStation

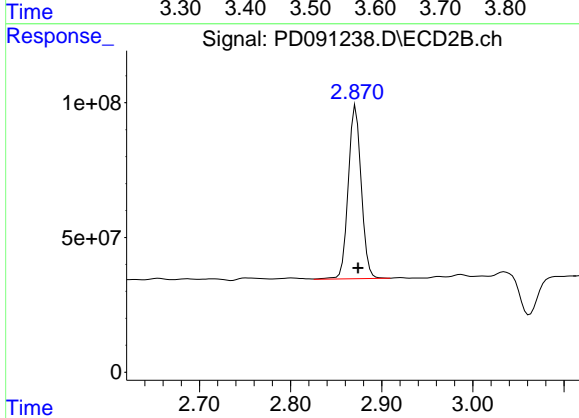
Volume Inj. : 1 µl
 Signal #1 Phase : ZB-MR1 Signal #2 Phase: ZB-MR2
 Signal #1 Info : 30M x 0.32mm x0.5 Signal #2 Info : 30M x 0.32mm x 0.25µm



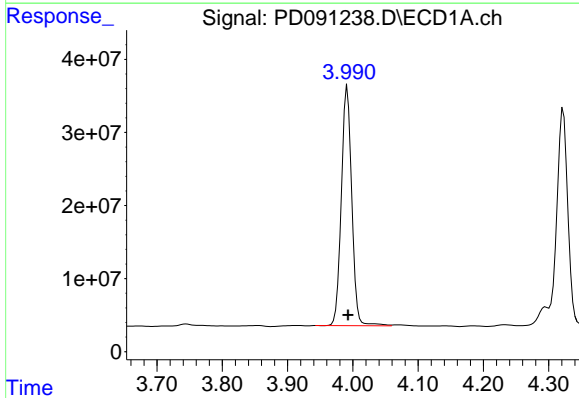


#1 Tetrachloro-m-xylene
 R.T.: 3.542 min
 Delta R.T.: -0.002 min
 Response: 99689290
 Conc: 28.91 ng/ml

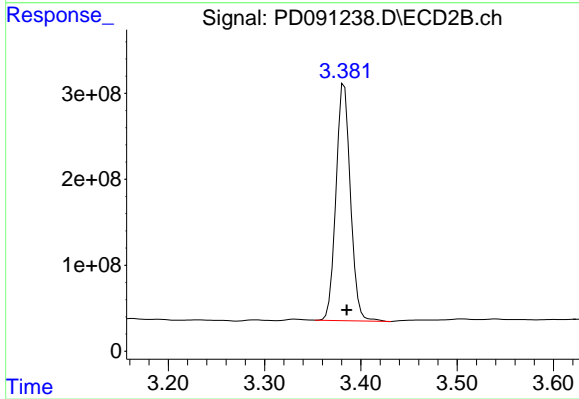
Instrument :
 ECD_D
 ClientSampleId :



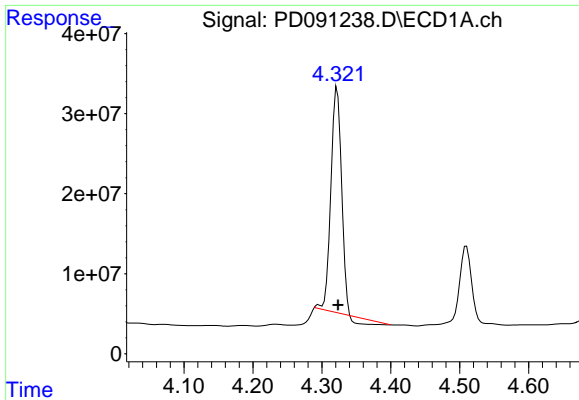
#1 Tetrachloro-m-xylene
 R.T.: 2.872 min
 Delta R.T.: -0.003 min
 Response: 635853615
 Conc: 17.36 ng/ml



#2 alpha-BHC
 R.T.: 3.992 min
 Delta R.T.: -0.001 min
 Response: 364115393
 Conc: 45.54 ng/ml

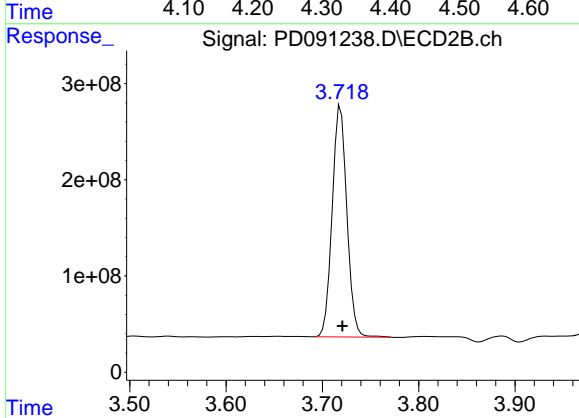


#2 alpha-BHC
 R.T.: 3.383 min
 Delta R.T.: -0.002 min
 Response: 2873215966
 Conc: 45.46 ng/ml

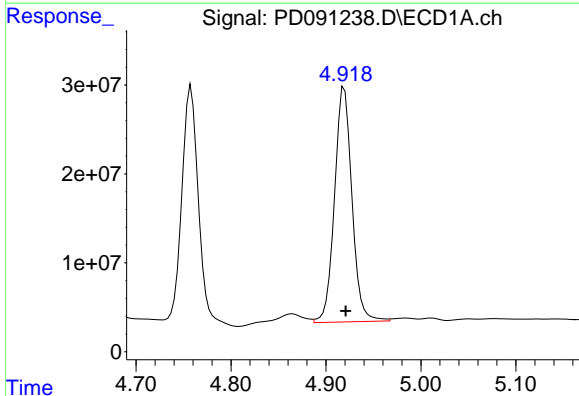


#3 gamma-BHC (Lindane)
 R.T.: 4.322 min
 Delta R.T.: -0.001 min
 Response: 285254386
 Conc: 38.17 ng/ml

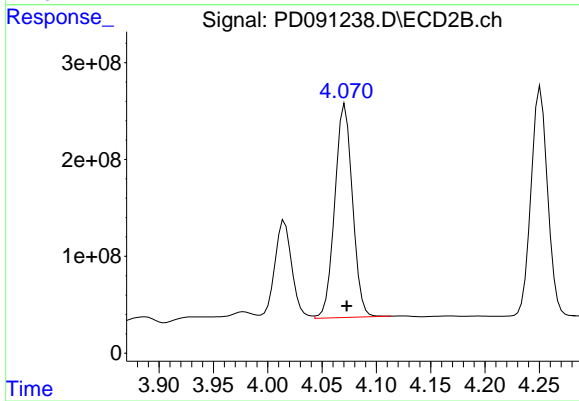
Instrument :
 ECD_D
 ClientSampleId :



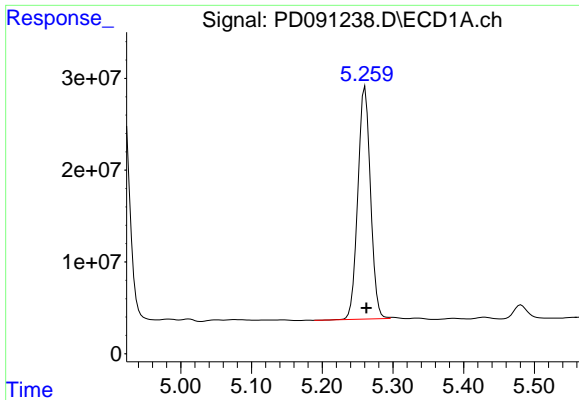
#3 gamma-BHC (Lindane)
 R.T.: 3.719 min
 Delta R.T.: -0.002 min
 Response: 2551976168
 Conc: 44.14 ng/ml



#4 Heptachlor
 R.T.: 4.919 min
 Delta R.T.: -0.002 min
 Response: 337939486
 Conc: 47.19 ng/ml



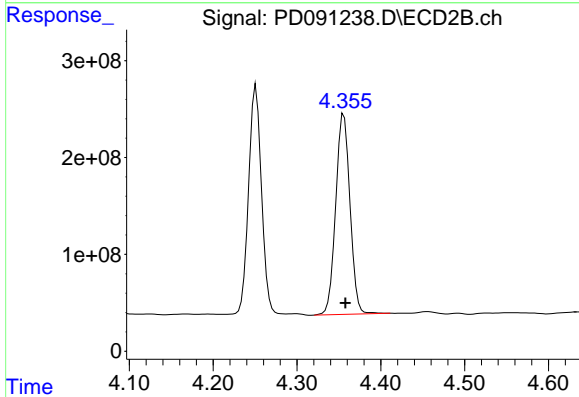
#4 Heptachlor
 R.T.: 4.071 min
 Delta R.T.: -0.001 min
 Response: 2498152399
 Conc: 45.25 ng/ml



#5 Aldrin

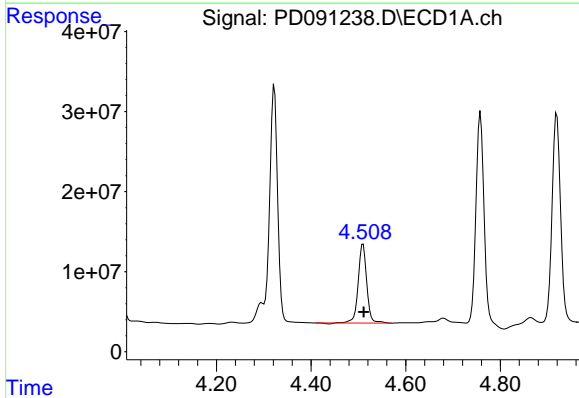
R.T.: 5.261 min
 Delta R.T.: -0.002 min
 Response: 314225652
 Conc: 43.30 ng/ml

Instrument :
 ECD_D
 ClientSampleId :



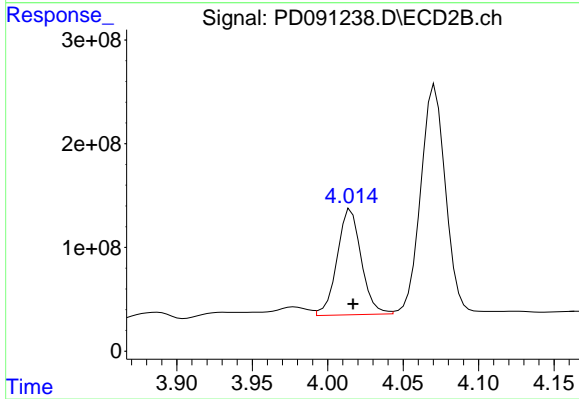
#5 Aldrin

R.T.: 4.356 min
 Delta R.T.: -0.002 min
 Response: 2450872926
 Conc: 43.41 ng/ml



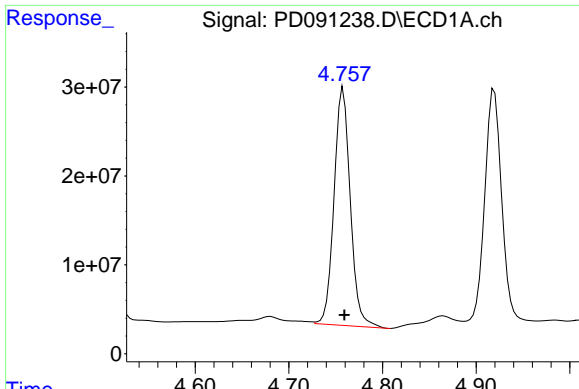
#6 beta-BHC

R.T.: 4.510 min
 Delta R.T.: -0.001 min
 Response: 123496808
 Conc: 42.50 ng/ml



#6 beta-BHC

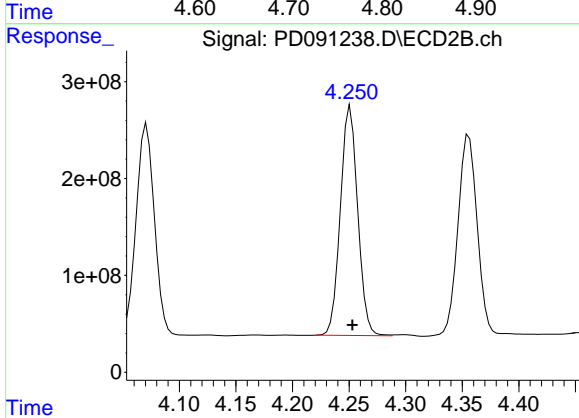
R.T.: 4.015 min
 Delta R.T.: -0.002 min
 Response: 1134850585
 Conc: 47.23 ng/ml



#7 delta-BHC

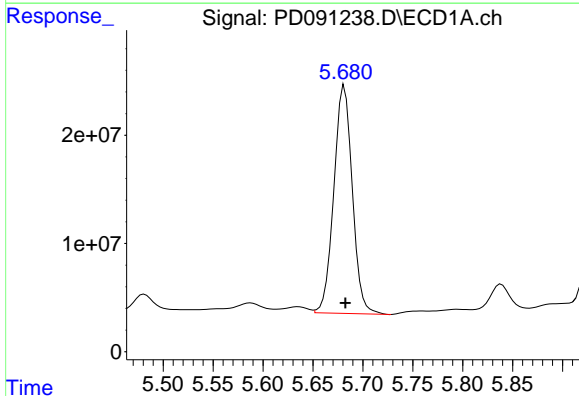
R.T.: 4.758 min
 Delta R.T.: -0.001 min
 Response: 322963132
 Conc: 43.46 ng/ml

Instrument :
 ECD_D
 ClientSampleId :



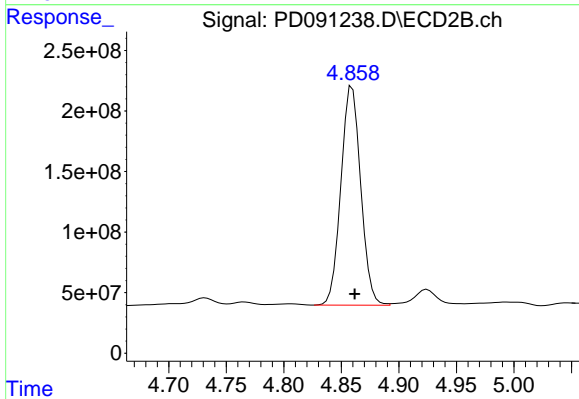
#7 delta-BHC

R.T.: 4.251 min
 Delta R.T.: -0.002 min
 Response: 2524759049
 Conc: 43.18 ng/ml



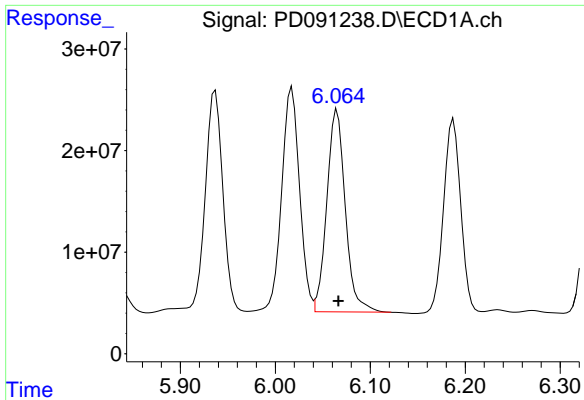
#8 Heptachlor epoxide

R.T.: 5.682 min
 Delta R.T.: -0.001 min
 Response: 271353527
 Conc: 41.77 ng/ml



#8 Heptachlor epoxide

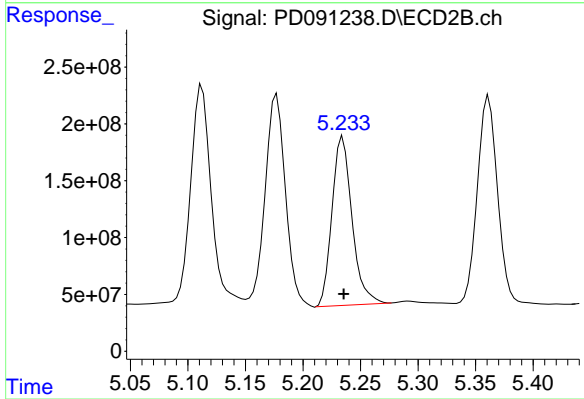
R.T.: 4.859 min
 Delta R.T.: -0.002 min
 Response: 2174435583
 Conc: 42.67 ng/ml



#9 Endosulfan I

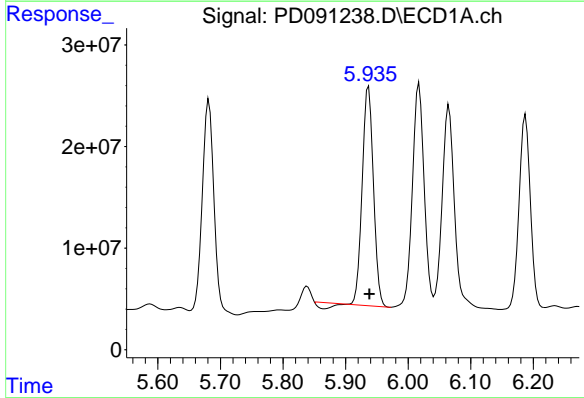
R.T.: 6.065 min
 Delta R.T.: -0.001 min
 Response: 269361871
 Conc: 43.85 ng/ml

Instrument :
 ECD_D
 ClientSampleId :



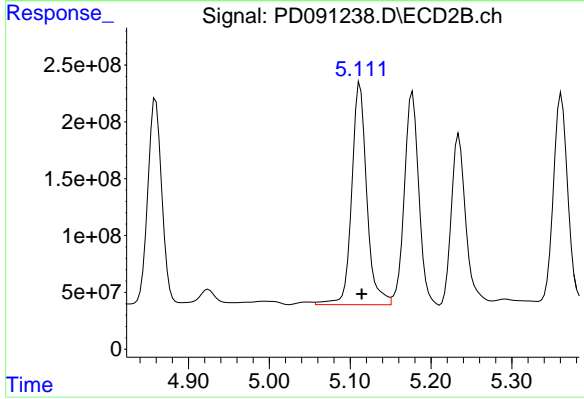
#9 Endosulfan I

R.T.: 5.234 min
 Delta R.T.: -0.001 min
 Response: 1800626058
 Conc: 37.63 ng/ml



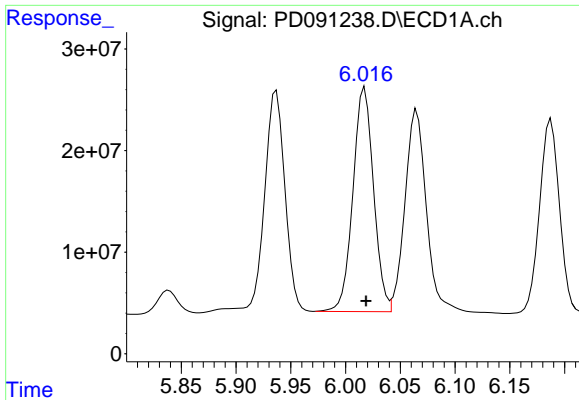
#10 gamma-Chlordane

R.T.: 5.937 min
 Delta R.T.: -0.001 min
 Response: 261742916
 Conc: 40.26 ng/ml



#10 gamma-Chlordane

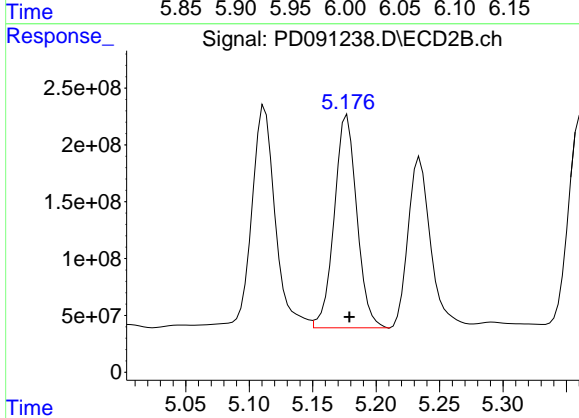
R.T.: 5.112 min
 Delta R.T.: -0.002 min
 Response: 2538747878
 Conc: 46.47 ng/ml



#11 alpha-Chlordane

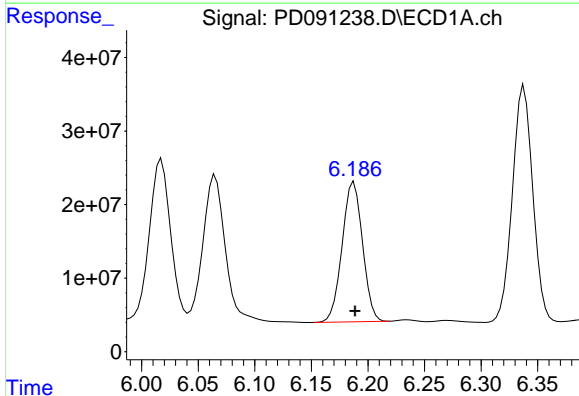
R.T.: 6.018 min
Delta R.T.: -0.001 min
Response: 289081059
Conc: 42.00 ng/ml

Instrument :
ECD_D
ClientSampleId :



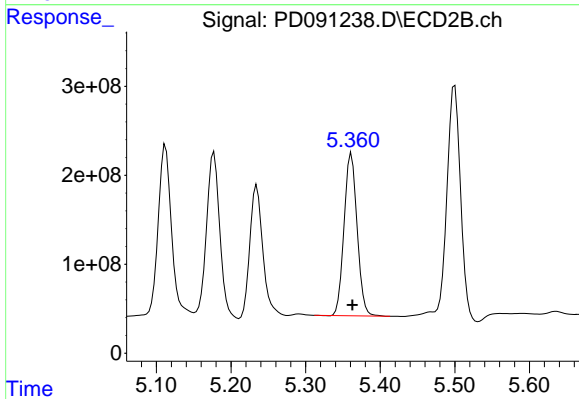
#11 alpha-Chlordane

R.T.: 5.177 min
Delta R.T.: -0.002 min
Response: 2317724865
Conc: 44.29 ng/ml



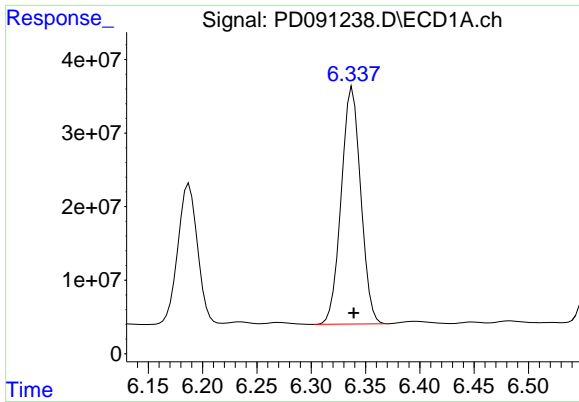
#12 4,4'-DDE

R.T.: 6.188 min
Delta R.T.: 0.000 min
Response: 238616591
Conc: 41.15 ng/ml



#12 4,4'-DDE

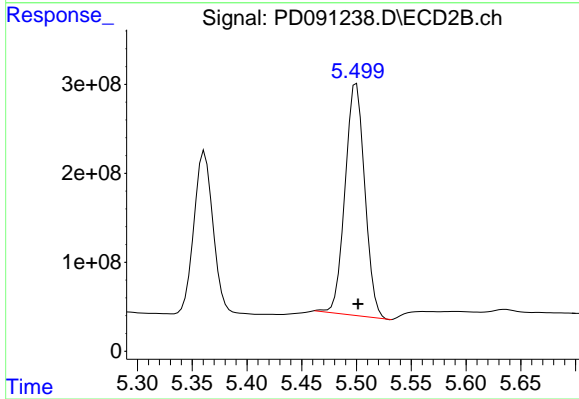
R.T.: 5.361 min
Delta R.T.: -0.002 min
Response: 2216900428
Conc: 41.48 ng/ml



#13 Dieldrin

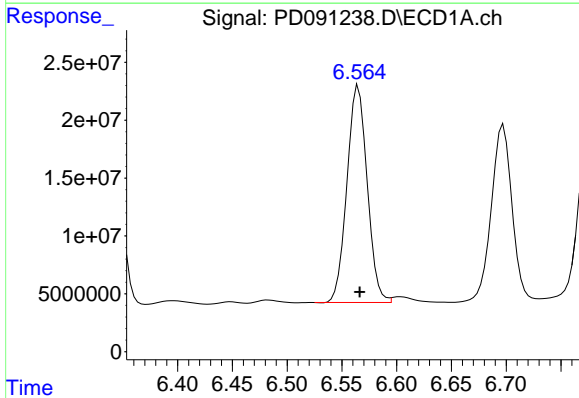
R.T.: 6.338 min
 Delta R.T.: -0.001 min
 Response: 403041900
 Conc: 62.34 ng/ml

Instrument :
 ECD_D
 ClientSampleId :



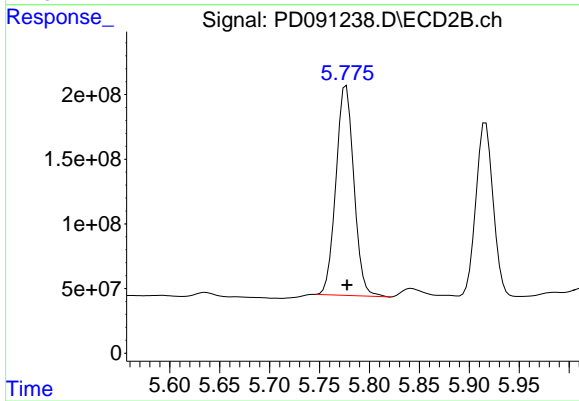
#13 Dieldrin

R.T.: 5.500 min
 Delta R.T.: -0.001 min
 Response: 3265242373
 Conc: 60.12 ng/ml



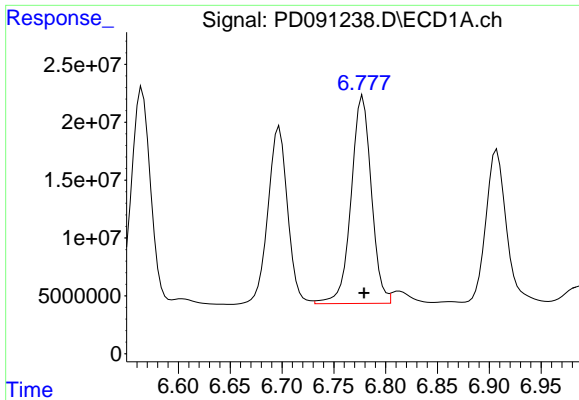
#14 Endrin

R.T.: 6.565 min
 Delta R.T.: -0.001 min
 Response: 241346667
 Conc: 48.62 ng/ml



#14 Endrin

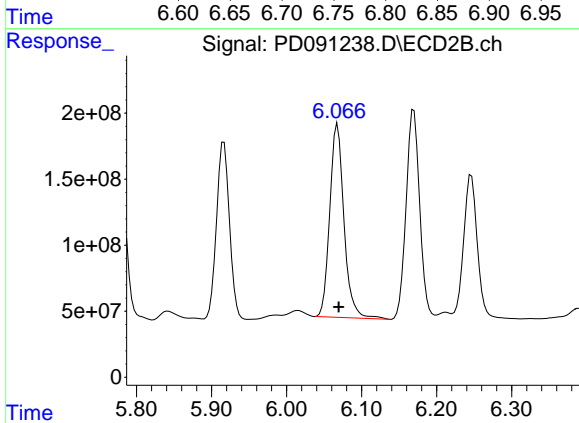
R.T.: 5.777 min
 Delta R.T.: 0.000 min
 Response: 2030526906
 Conc: 44.93 ng/ml



#15 Endosulfan II

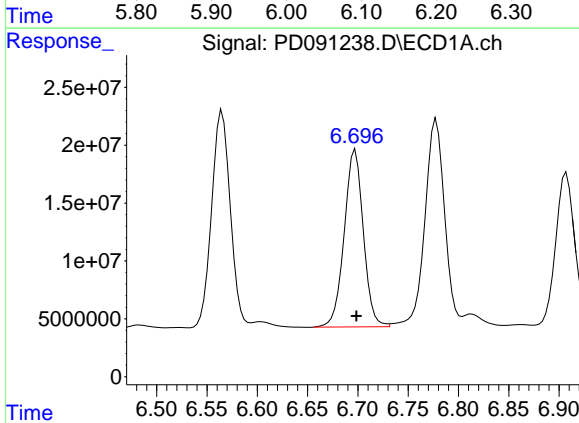
R.T.: 6.778 min
 Delta R.T.: -0.001 min
 Response: 243483370
 Conc: 43.80 ng/ml

Instrument :
 ECD_D
 ClientSampleId :



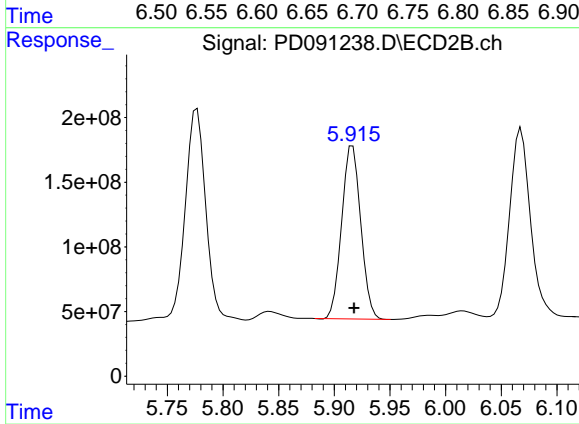
#15 Endosulfan II

R.T.: 6.068 min
 Delta R.T.: -0.002 min
 Response: 1933953854
 Conc: 41.43 ng/ml



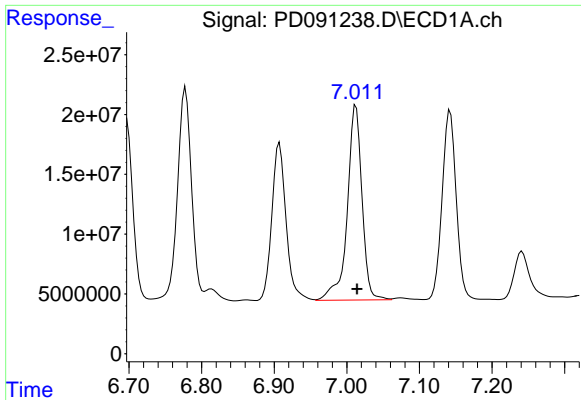
#16 4,4'-DDD

R.T.: 6.697 min
 Delta R.T.: -0.001 min
 Response: 201778554
 Conc: 41.08 ng/ml



#16 4,4'-DDD

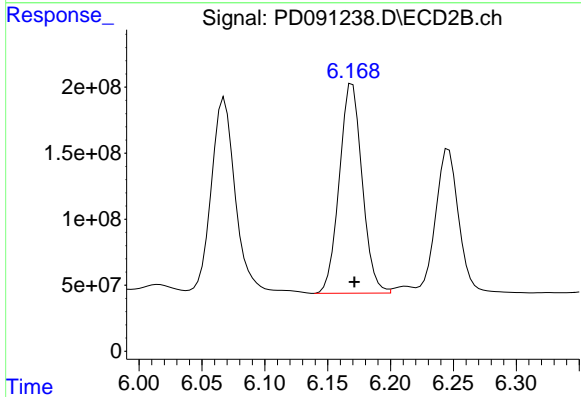
R.T.: 5.916 min
 Delta R.T.: -0.001 min
 Response: 1598205742
 Conc: 32.70 ng/ml



#17 4,4'-DDT

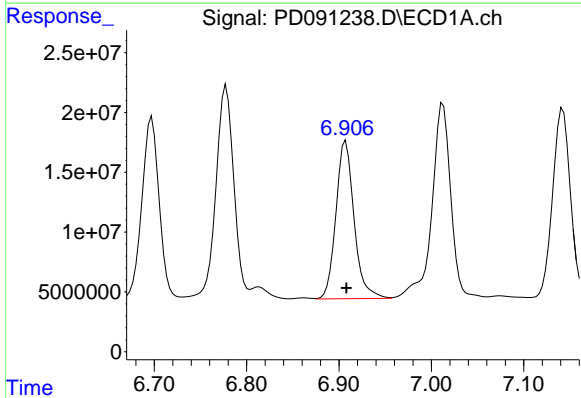
R.T.: 7.013 min
Delta R.T.: -0.002 min
Response: 230277372
Conc: 55.68 ng/ml

Instrument :
ECD_D
ClientSampleId :



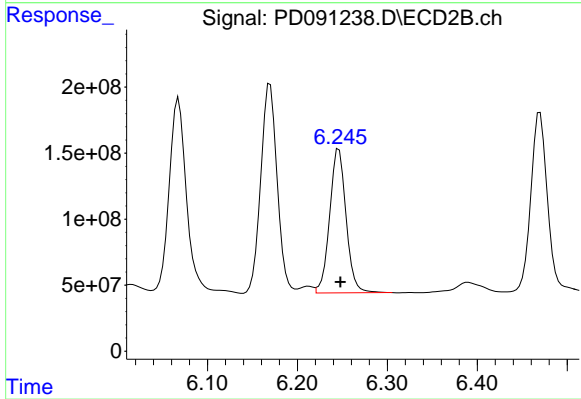
#17 4,4'-DDT

R.T.: 6.170 min
Delta R.T.: -0.002 min
Response: 2009242966
Conc: 51.34 ng/ml



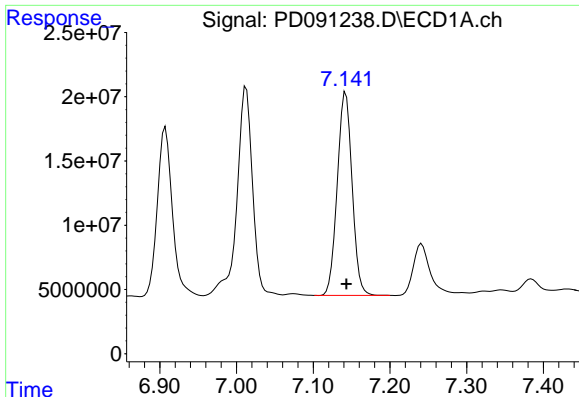
#18 Endrin aldehyde

R.T.: 6.907 min
Delta R.T.: 0.000 min
Response: 180280827
Conc: 43.27 ng/ml



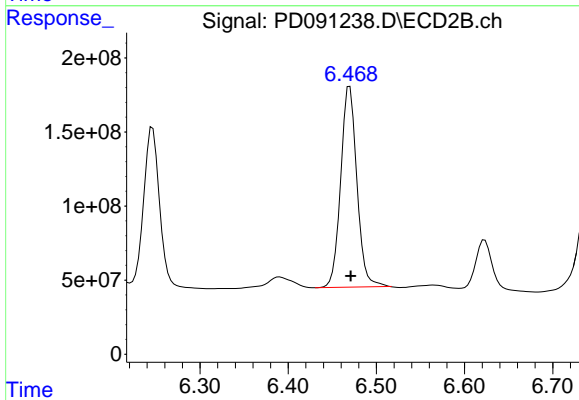
#18 Endrin aldehyde

R.T.: 6.246 min
Delta R.T.: -0.001 min
Response: 1384160648
Conc: 39.22 ng/ml

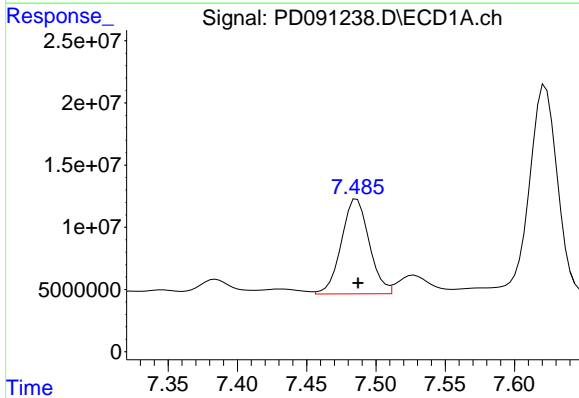


#19 Endosulfan Sulfate
 R.T.: 7.142 min
 Delta R.T.: 0.000 min
 Response: 212409702
 Conc: 41.29 ng/ml

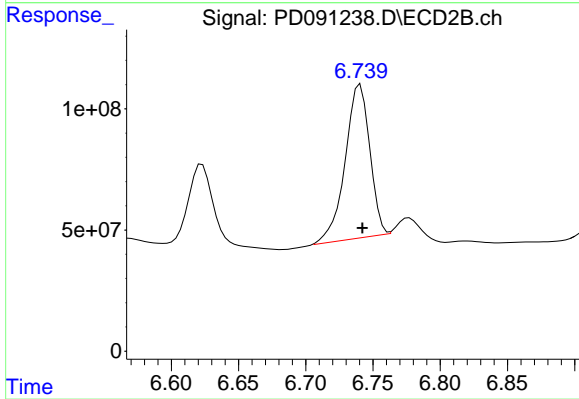
Instrument :
 ECD_D
 ClientSampleId :



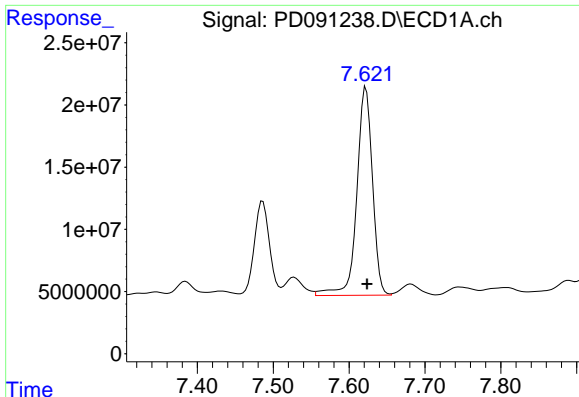
#19 Endosulfan Sulfate
 R.T.: 6.470 min
 Delta R.T.: -0.001 min
 Response: 1729039774
 Conc: 38.56 ng/ml



#20 Methoxychlor
 R.T.: 7.486 min
 Delta R.T.: 0.000 min
 Response: 106743897
 Conc: 49.09 ng/ml



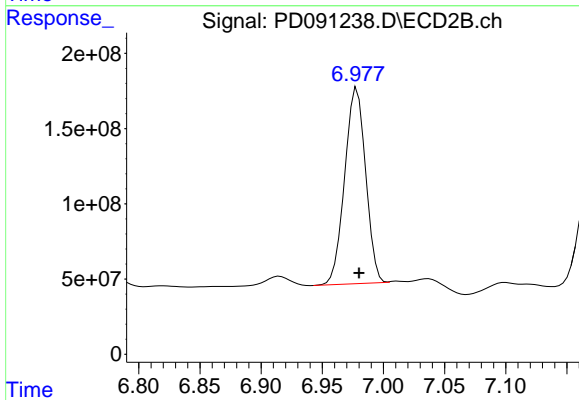
#20 Methoxychlor
 R.T.: 6.740 min
 Delta R.T.: -0.002 min
 Response: 804516108
 Conc: 40.12 ng/ml



#21 Endrin ketone

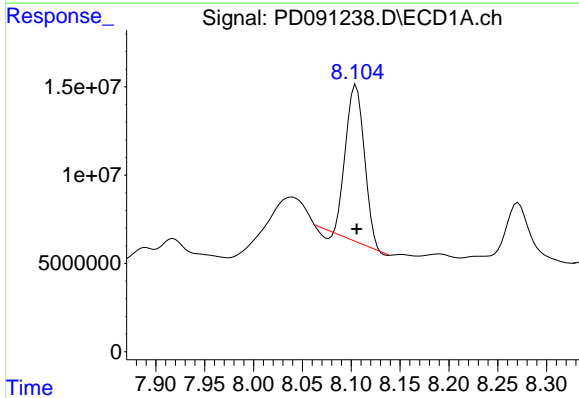
R.T.: 7.622 min
 Delta R.T.: -0.001 min
 Response: 240883969
 Conc: 42.76 ng/ml

Instrument :
 ECD_D
 ClientSampleId :



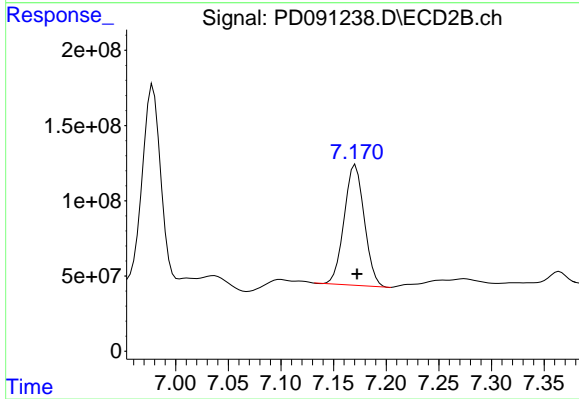
#21 Endrin ketone

R.T.: 6.979 min
 Delta R.T.: -0.002 min
 Response: 1551507691
 Conc: 30.45 ng/ml



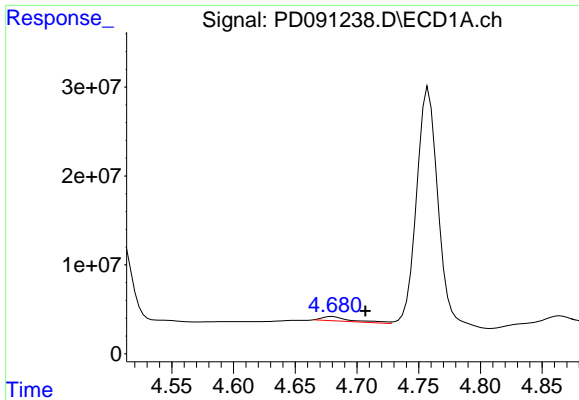
#22 Mirex

R.T.: 8.105 min
 Delta R.T.: 0.000 min
 Response: 117793810
 Conc: 33.12 ng/ml



#22 Mirex

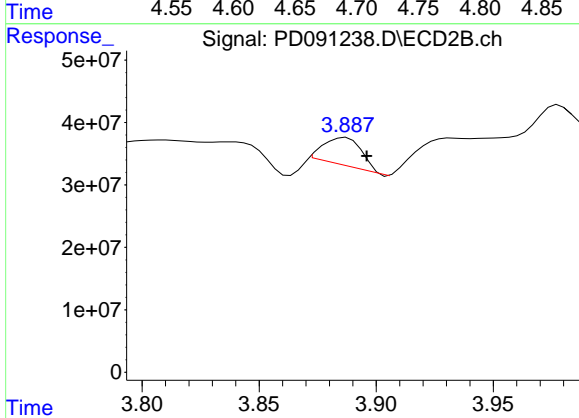
R.T.: 7.171 min
 Delta R.T.: -0.001 min
 Response: 1070335824
 Conc: 32.30 ng/ml



#23 Chlordane-1

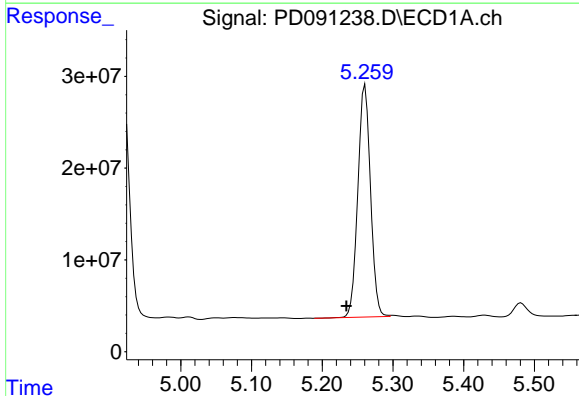
R.T.: 4.680 min
 Delta R.T.: -0.027 min
 Response: 8494738
 Conc: 34.52 ng/ml

Instrument :
 ECD_D
 ClientSampleId :



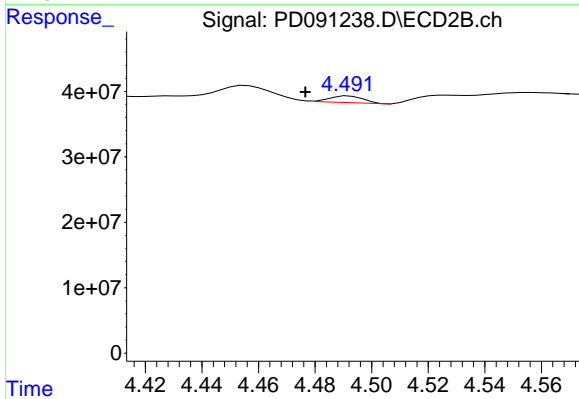
#23 Chlordane-1

R.T.: 3.887 min
 Delta R.T.: -0.009 min
 Response: 49755029
 Conc: 28.92 ng/ml



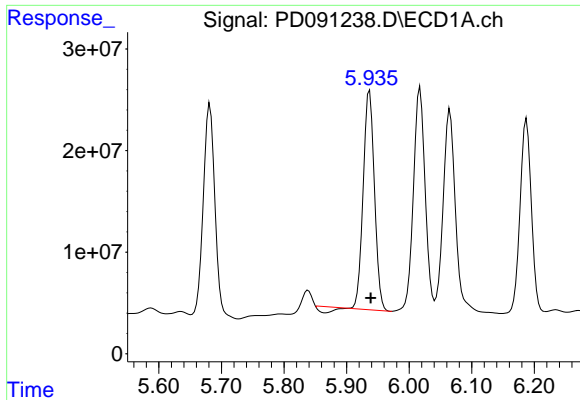
#24 Chlordane-2

R.T.: 5.261 min
 Delta R.T.: 0.026 min
 Response: 314225652
 Conc: 1272.53 ng/ml



#24 Chlordane-2

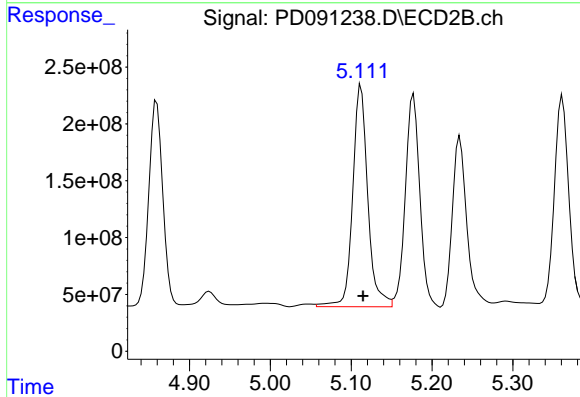
R.T.: 4.492 min
 Delta R.T.: 0.015 min
 Response: 8523399
 Conc: 4.87 ng/ml



#25 Chlordane-3

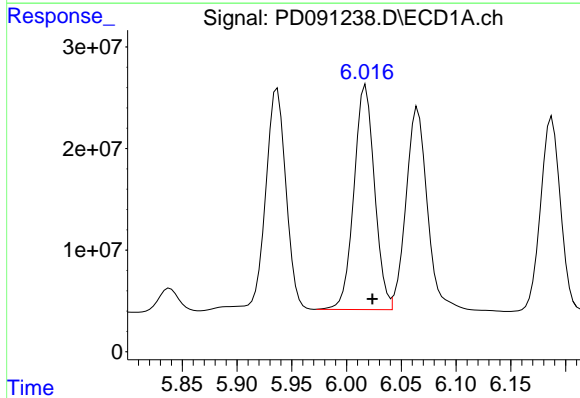
R.T.: 5.937 min
 Delta R.T.: -0.002 min
 Response: 261742916
 Conc: 271.28 ng/ml

Instrument :
 ECD_D
 ClientSampleId :



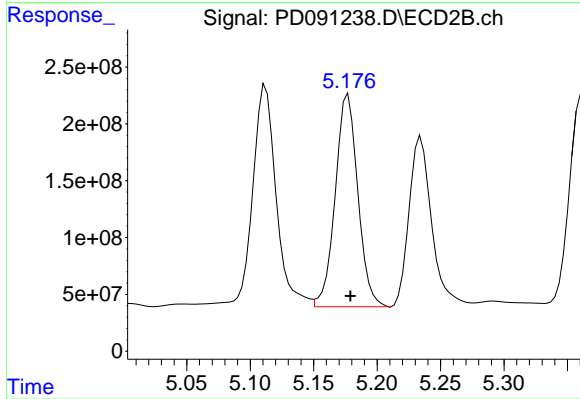
#25 Chlordane-3

R.T.: 5.112 min
 Delta R.T.: -0.003 min
 Response: 2538747878
 Conc: 441.25 ng/ml



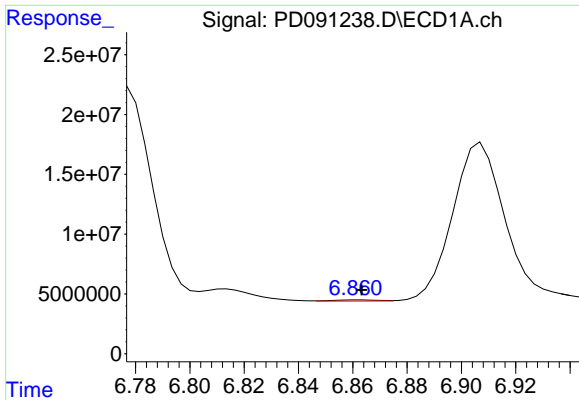
#26 Chlordane-4

R.T.: 6.018 min
 Delta R.T.: -0.006 min
 Response: 289081059
 Conc: 240.66 ng/ml



#26 Chlordane-4

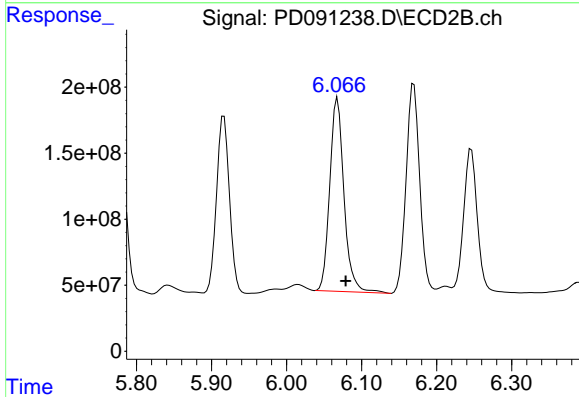
R.T.: 5.177 min
 Delta R.T.: -0.002 min
 Response: 2317724865
 Conc: 484.52 ng/ml



#27 Chlordane-5

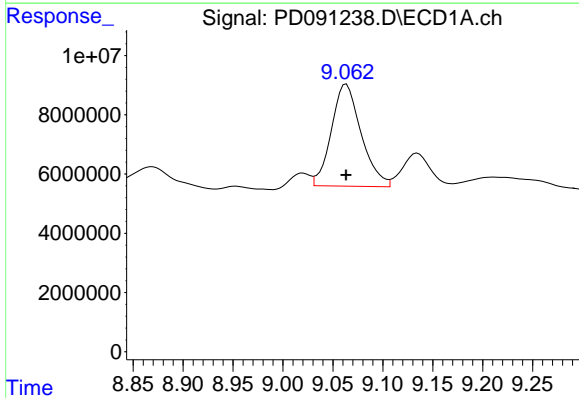
R.T.: 6.862 min
 Delta R.T.: -0.001 min
 Response: 1186074
 Conc: 6.00 ng/ml

Instrument :
 ECD_D
 ClientSampleId :



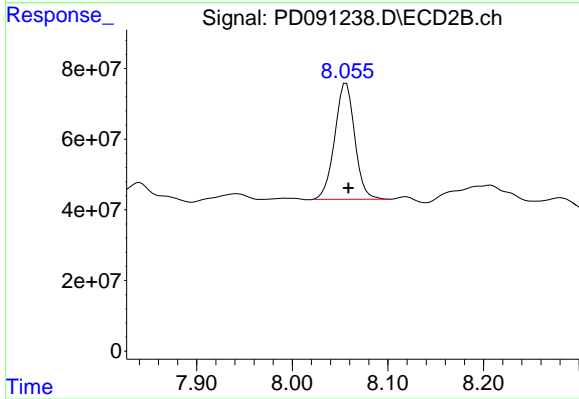
#27 Chlordane-5

R.T.: 6.068 min
 Delta R.T.: -0.011 min
 Response: 1933953854
 Conc: 953.06 ng/ml



#28 Decachlorobiphenyl

R.T.: 9.063 min
 Delta R.T.: 0.000 min
 Response: 71586916
 Conc: 14.37 ng/ml



#28 Decachlorobiphenyl

R.T.: 8.056 min
 Delta R.T.: -0.002 min
 Response: 478722375
 Conc: 12.10 ng/ml