

Data Path : Z:\pestpcbsrv\HPCHEM1\ECD_D\Data\PD111725\
 Data File : PD091239.D
 Signal(s) : Signal #1: ECD1A.ch Signal #2: ECD2B.ch
 Acq On : 17 Nov 2025 21:52
 Operator : AR\AJ
 Sample : Q3649-03MSD
 Misc :
 ALS Vial : 21 Sample Multiplier: 1

Instrument :
 ECD_D
 ClientSampleId :

Integration File signal 1: autoint1.e
 Integration File signal 2: autoint2.e
 Quant Time: Nov 18 01:13:17 2025
 Quant Method : Z:\pestpcbsrv\HPCHEM1\ECD_D\Method\PD111525.M
 Quant Title : GC Extractables
 QLast Update : Sat Nov 15 04:46:13 2025
 Response via : Initial Calibration
 Integrator: ChemStation

Volume Inj. : 1 µl
 Signal #1 Phase : ZB-MR2 Signal #2 Phase: ZB-MR2
 Signal #1 Info : 30M x 0.32mm x0.5 Signal #2 Info : 30M x 0.32mm x 0.25µm

	Compound	RT#1	RT#2	Resp#1	Resp#2	ng/ml	ng/ml

System Monitoring Compounds							
1)	SA Tetrachlo...	3.541	2.872	99045761	628.1E6	28.720	17.148 #
28)	SA Decachlor...	9.062	8.057	65039166	450.6E6	13.055	11.385
Target Compounds							
2)	A alpha-BHC	3.991	3.383	352.1E6	2828.3E6	44.040	44.750
3)	MA gamma-BHC...	4.321	3.719	265.2E6	2492.1E6	35.494	43.101
4)	MA Heptachlor	4.919	4.071	315.6E6	2338.1E6	44.062	42.350
5)	MB Aldrin	5.260	4.356	306.4E6	2391.1E6	42.225	42.352
6)	B beta-BHC	4.509	4.016	124.6E6	1109.7E6	42.895	46.187
7)	B delta-BHC	4.757	4.251	317.5E6	2461.7E6	42.726	42.097
8)	B Heptachlo...	5.680	4.860	265.3E6	2116.3E6	40.835	41.530
9)	A Endosulfan I	6.064	5.235	259.5E6	1751.6E6	42.248	36.604
10)	B gamma-Chl...	5.936	5.113	258.8E6	2455.4E6	39.806	44.948
11)	B alpha-Chl...	6.017	5.177	275.6E6	2248.9E6	40.042	42.975
12)	B 4,4'-DDE	6.186	5.362	230.0E6	2145.5E6	39.655	40.146
13)	MA Dieldrin	6.337	5.499	388.8E6	3175.0E6	60.133	58.460
14)	MA Endrin	6.564	5.776	232.5E6	1951.2E6	46.847	43.176
15)	B Endosulfa...	6.777	6.067	236.0E6	1858.7E6	42.455	39.818
16)	A 4,4'-DDD	6.696	5.916	195.2E6	1555.3E6	39.735	31.826
17)	MA 4,4'-DDT	7.012	6.170	214.8E6	1847.1E6	51.952	47.202
18)	B Endrin al...	6.906	6.246	170.7E6	1309.6E6	40.971	37.109
19)	B Endosulfa...	7.141	6.469	203.5E6	1631.4E6	39.556	36.388
20)	A Methoxychlor	7.485	6.740	97413476	737.8E6	44.801	36.796
21)	B Endrin ke...	7.622	6.978	229.0E6	1442.2E6	40.648	28.303 #
22)	Mirex	8.103	7.171	112.8E6	1007.3E6	31.710	30.396
23)	Chlordane-1	4.679f	3.887	8771889	53144624	35.650	30.893
24)	Chlordane-2	5.260f	4.492	306.4E6	9634494	1240.841	5.502 #
25)	Chlordane-3	5.936	5.113	258.8E6	2455.4E6	268.197	426.759 #
26)	Chlordane-4	6.017	5.177	275.6E6	2248.9E6	229.435	470.138 #
27)	Chlordane-5	6.862	6.067	1094611	1858.7E6	5.540	915.963 #

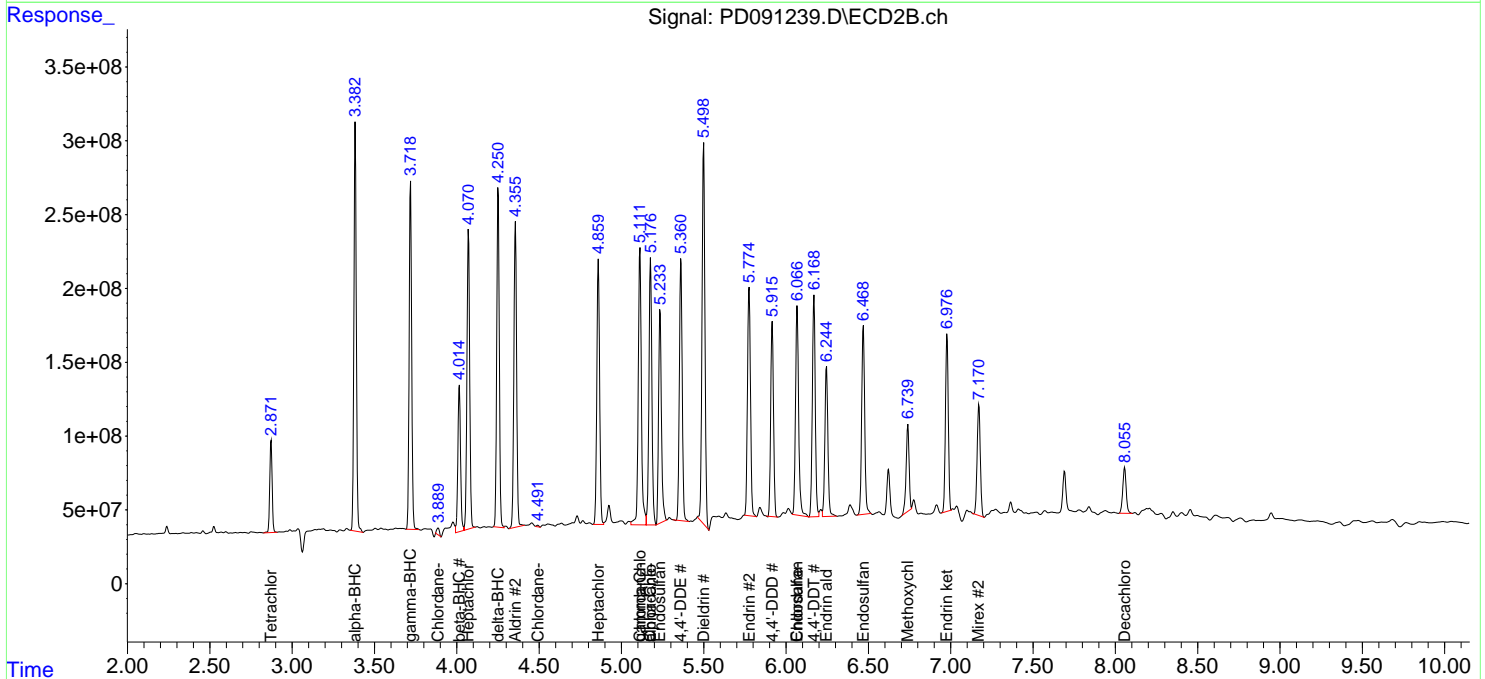
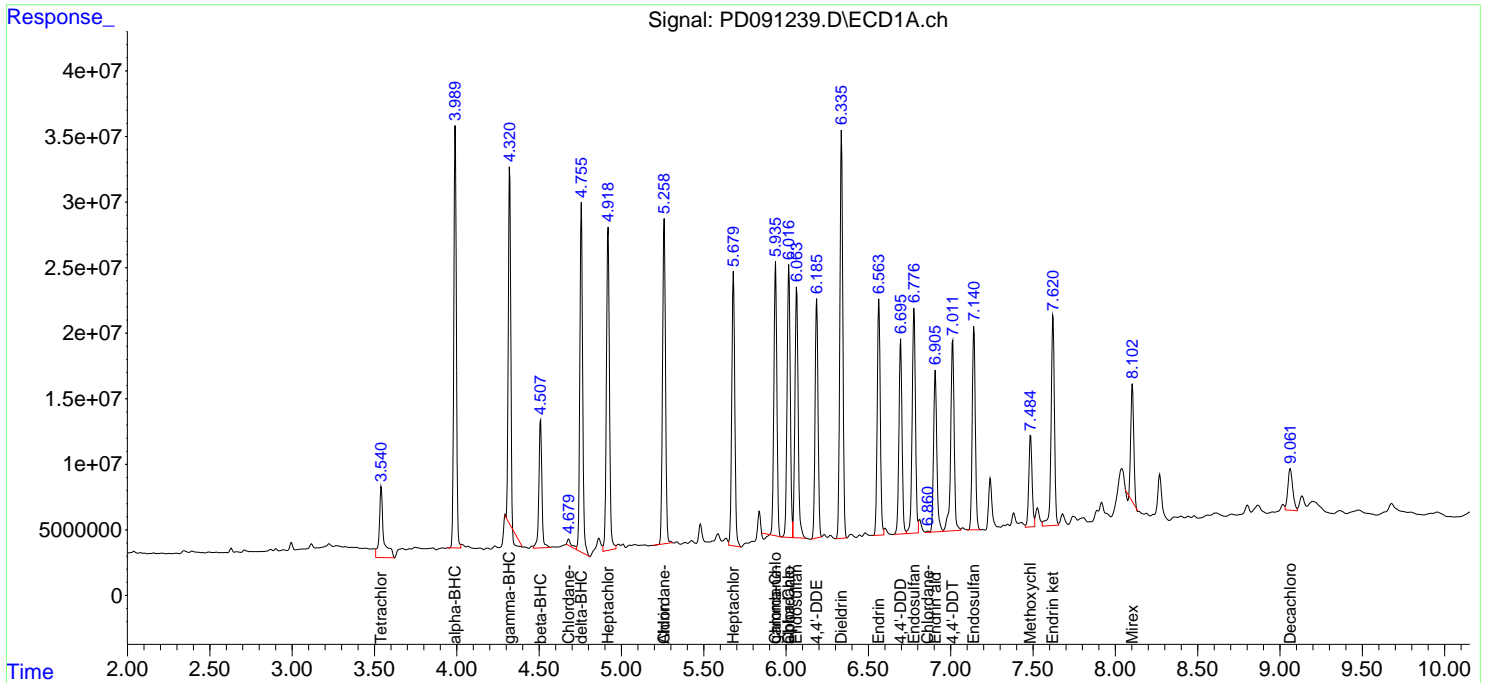
(f)=RT Delta > 1/2 Window (#)=Amounts differ by > 25% (m)=manual int.

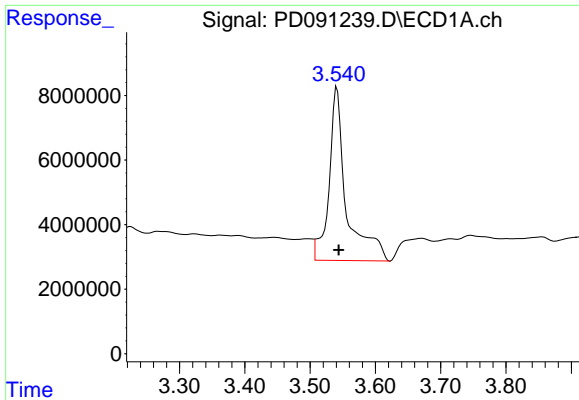
Data Path : Z:\pestpcbsrv\HPCHEM1\ECD_D\Data\PD111725\
 Data File : PD091239.D
 Signal(s) : Signal #1: ECD1A.ch Signal #2: ECD2B.ch
 Acq On : 17 Nov 2025 21:52
 Operator : AR\AJ
 Sample : Q3649-03MSD
 Misc :
 ALS Vial : 21 Sample Multiplier: 1

Instrument :
 ECD_D
 ClientSampleId :

Integration File signal 1: autoint1.e
 Integration File signal 2: autoint2.e
 Quant Time: Nov 18 01:13:17 2025
 Quant Method : Z:\pestpcbsrv\HPCHEM1\ECD_D\Method\PD111525.M
 Quant Title : GC Extractables
 QLast Update : Sat Nov 15 04:46:13 2025
 Response via : Initial Calibration
 Integrator: ChemStation

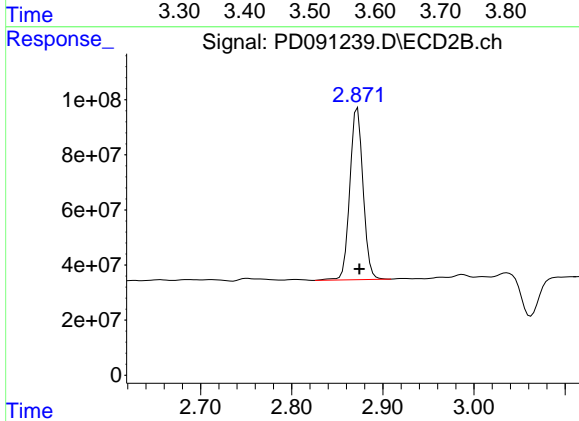
Volume Inj. : 1 µl
 Signal #1 Phase : ZB-MR1 Signal #2 Phase: ZB-MR2
 Signal #1 Info : 30M x 0.32mm x0.5 Signal #2 Info : 30M x 0.32mm x 0.25µm



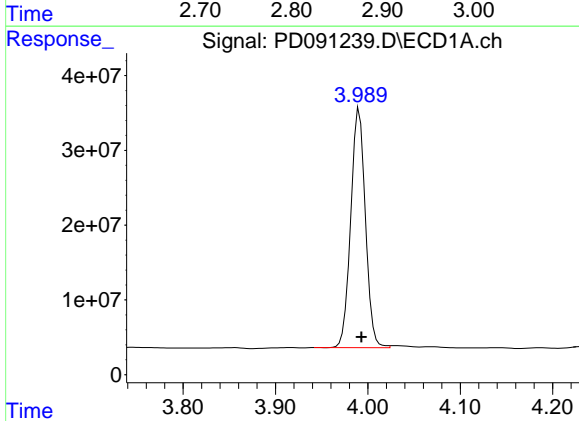


#1 Tetrachloro-m-xylene
 R.T.: 3.541 min
 Delta R.T.: -0.003 min
 Response: 99045761
 Conc: 28.72 ng/ml

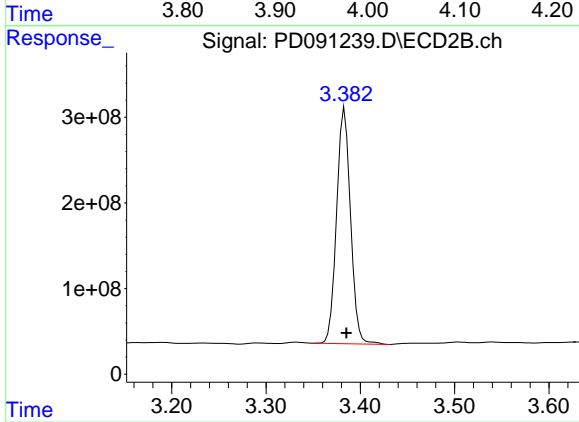
Instrument :
 ECD_D
 ClientSampleId :



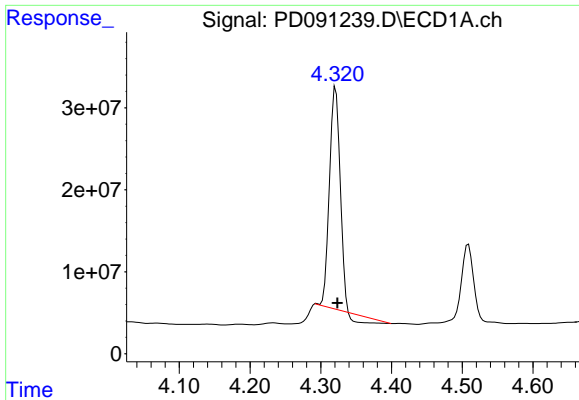
#1 Tetrachloro-m-xylene
 R.T.: 2.872 min
 Delta R.T.: -0.002 min
 Response: 628119724
 Conc: 17.15 ng/ml



#2 alpha-BHC
 R.T.: 3.991 min
 Delta R.T.: -0.002 min
 Response: 352124846
 Conc: 44.04 ng/ml



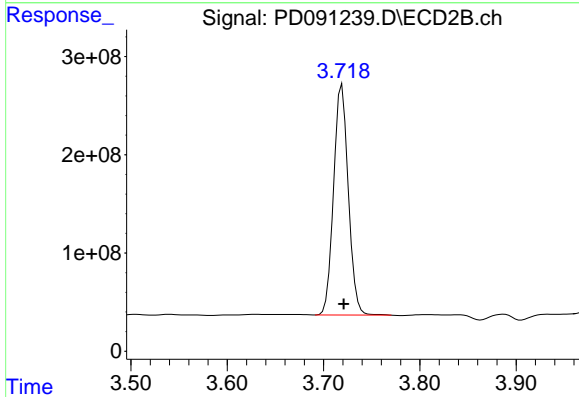
#2 alpha-BHC
 R.T.: 3.383 min
 Delta R.T.: -0.002 min
 Response: 2828298874
 Conc: 44.75 ng/ml



#3 gamma-BHC (Lindane)

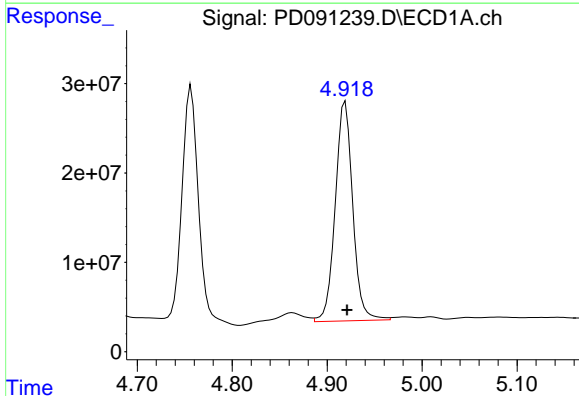
R.T.: 4.321 min
Delta R.T.: -0.002 min
Response: 265242609
Conc: 35.49 ng/ml

Instrument :
ECD_D
ClientSampleId :



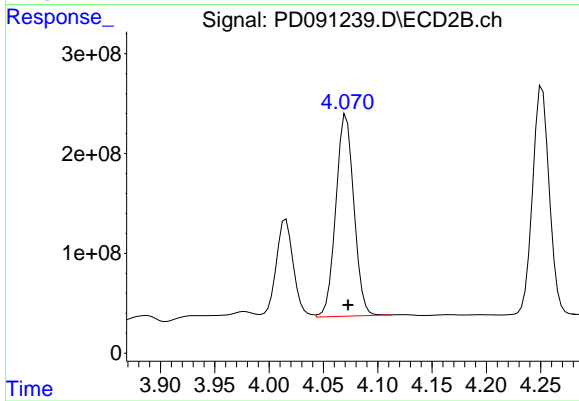
#3 gamma-BHC (Lindane)

R.T.: 3.719 min
Delta R.T.: -0.002 min
Response: 2492146989
Conc: 43.10 ng/ml



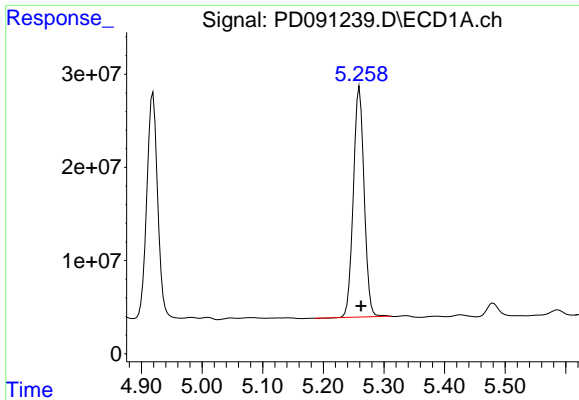
#4 Heptachlor

R.T.: 4.919 min
Delta R.T.: -0.002 min
Response: 315559246
Conc: 44.06 ng/ml



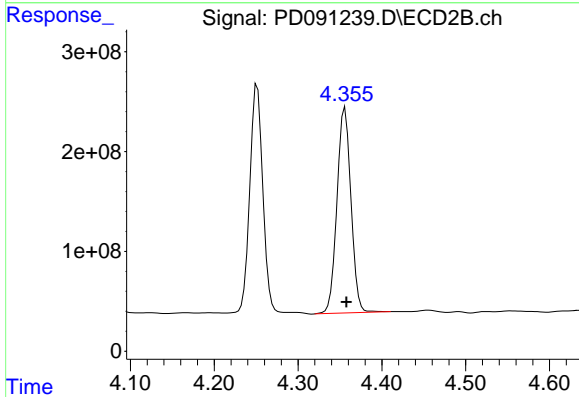
#4 Heptachlor

R.T.: 4.071 min
Delta R.T.: -0.002 min
Response: 2338101594
Conc: 42.35 ng/ml

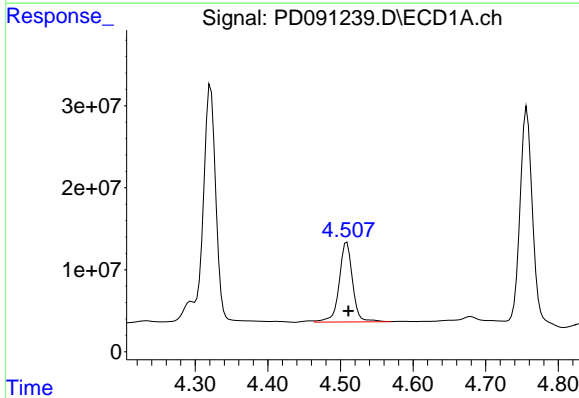


#5 Aldrin
 R.T.: 5.260 min
 Delta R.T.: -0.003 min
 Response: 306400949
 Conc: 42.22 ng/ml

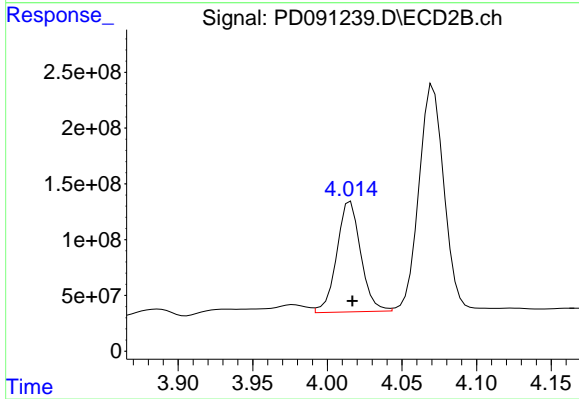
Instrument :
 ECD_D
 ClientSampleId :



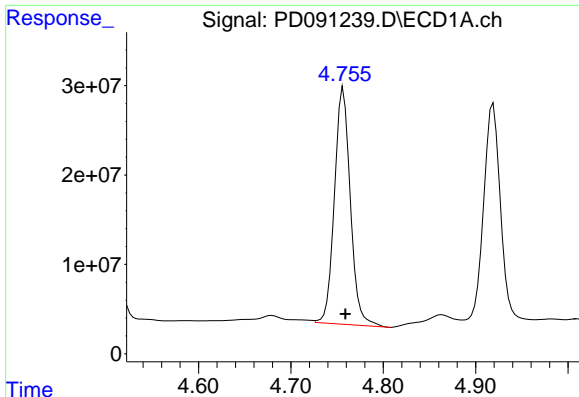
#5 Aldrin
 R.T.: 4.356 min
 Delta R.T.: -0.002 min
 Response: 2391134755
 Conc: 42.35 ng/ml



#6 beta-BHC
 R.T.: 4.509 min
 Delta R.T.: -0.002 min
 Response: 124632255
 Conc: 42.90 ng/ml



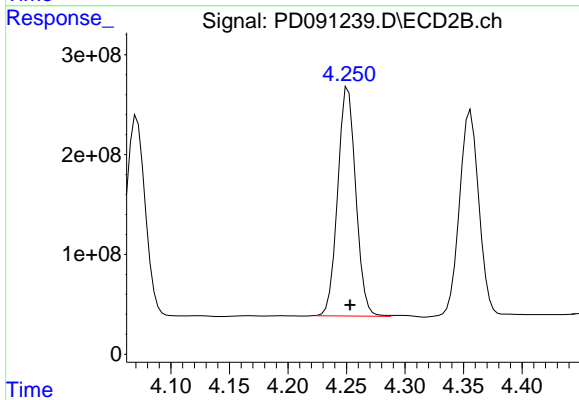
#6 beta-BHC
 R.T.: 4.016 min
 Delta R.T.: -0.001 min
 Response: 1109738958
 Conc: 46.19 ng/ml



#7 delta-BHC

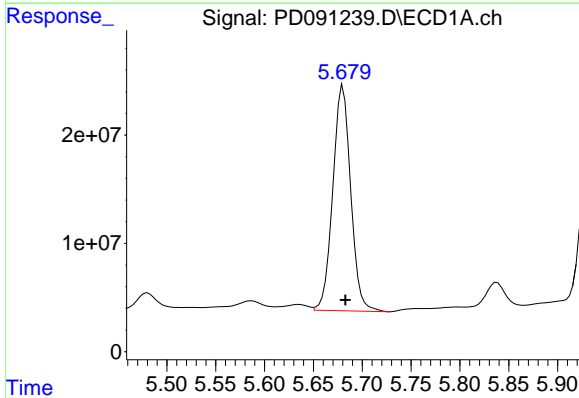
R.T.: 4.757 min
 Delta R.T.: -0.002 min
 Response: 317540815
 Conc: 42.73 ng/ml

Instrument :
 ECD_D
 ClientSampleId :



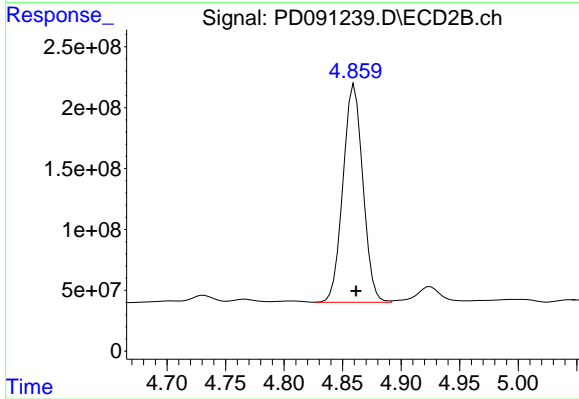
#7 delta-BHC

R.T.: 4.251 min
 Delta R.T.: -0.002 min
 Response: 2461713985
 Conc: 42.10 ng/ml



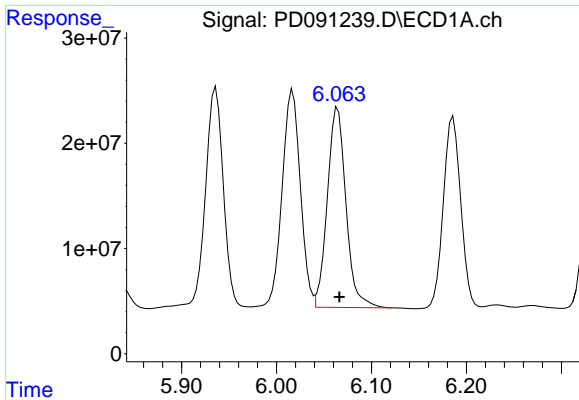
#8 Heptachlor epoxide

R.T.: 5.680 min
 Delta R.T.: -0.002 min
 Response: 265295556
 Conc: 40.84 ng/ml



#8 Heptachlor epoxide

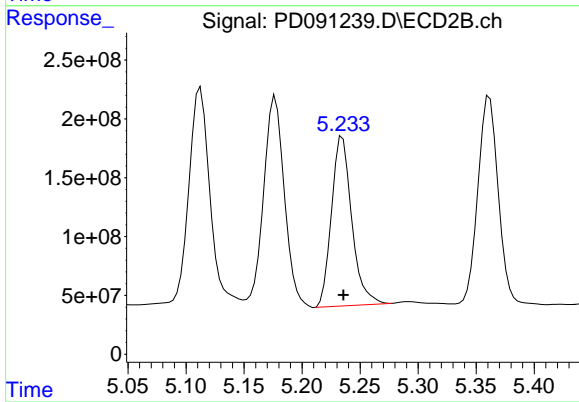
R.T.: 4.860 min
 Delta R.T.: -0.001 min
 Response: 2116289932
 Conc: 41.53 ng/ml



#9 Endosulfan I

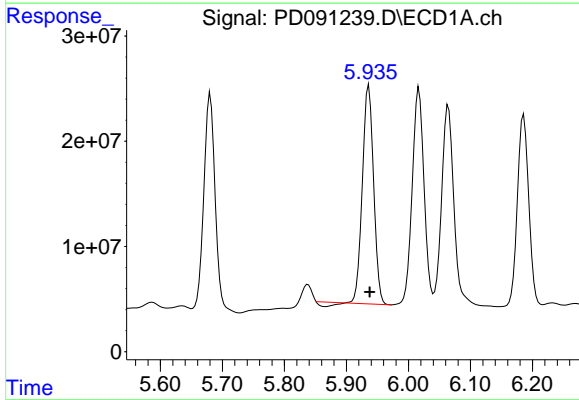
R.T.: 6.064 min
 Delta R.T.: -0.002 min
 Response: 259529088
 Conc: 42.25 ng/ml

Instrument :
 ECD_D
 ClientSampleId :



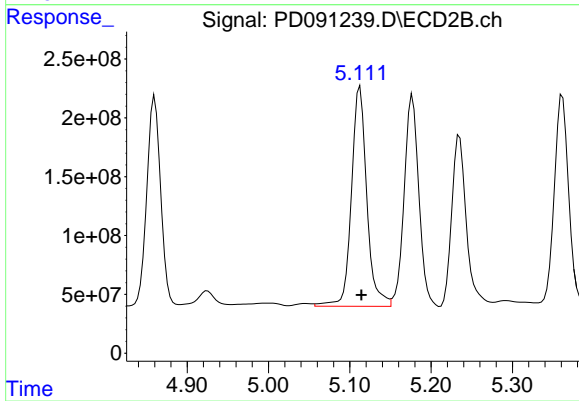
#9 Endosulfan I

R.T.: 5.235 min
 Delta R.T.: 0.000 min
 Response: 1751590816
 Conc: 36.60 ng/ml



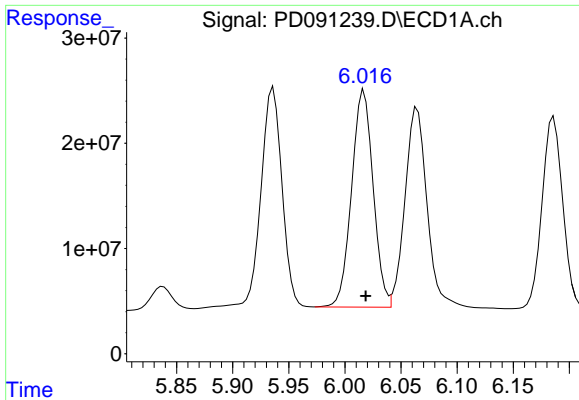
#10 gamma-Chlordane

R.T.: 5.936 min
 Delta R.T.: -0.002 min
 Response: 258768650
 Conc: 39.81 ng/ml



#10 gamma-Chlordane

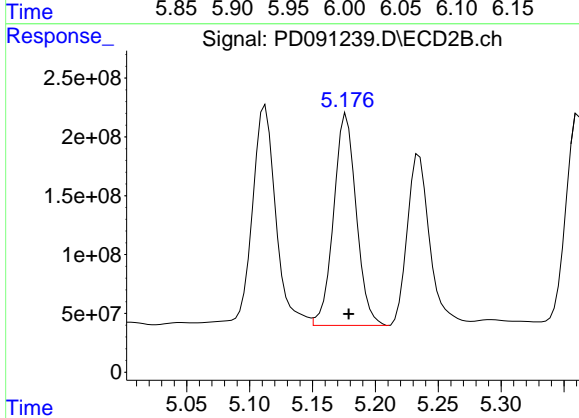
R.T.: 5.113 min
 Delta R.T.: -0.002 min
 Response: 2455389820
 Conc: 44.95 ng/ml



#11 alpha-Chlordane

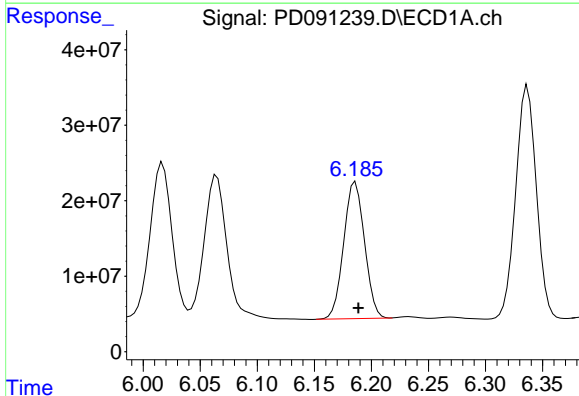
R.T.: 6.017 min
 Delta R.T.: -0.002 min
 Response: 275598795
 Conc: 40.04 ng/ml

Instrument :
 ECD_D
 ClientSampleId :



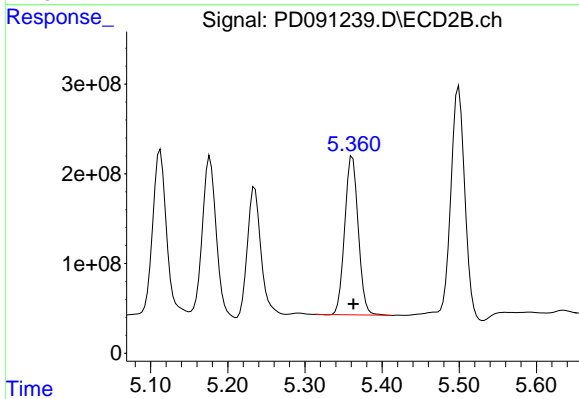
#11 alpha-Chlordane

R.T.: 5.177 min
 Delta R.T.: -0.002 min
 Response: 2248933600
 Conc: 42.97 ng/ml



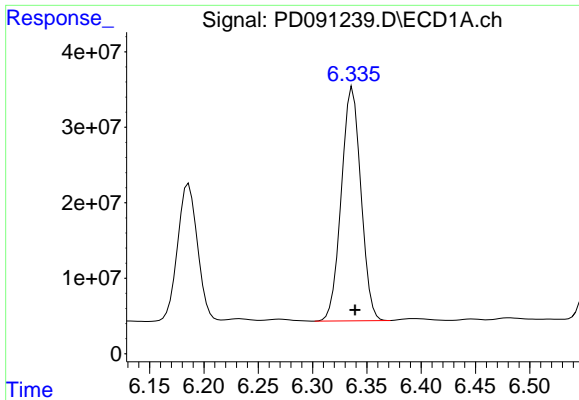
#12 4,4'-DDE

R.T.: 6.186 min
 Delta R.T.: -0.002 min
 Response: 229973457
 Conc: 39.65 ng/ml



#12 4,4'-DDE

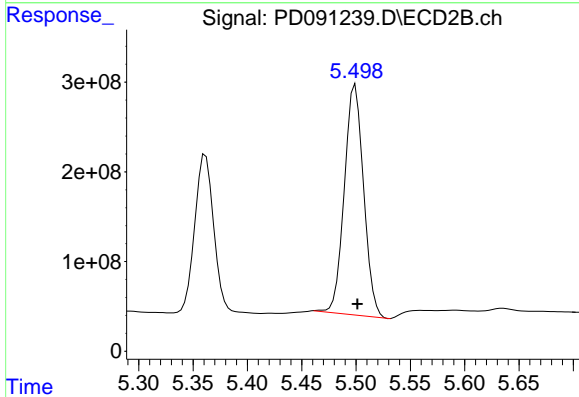
R.T.: 5.362 min
 Delta R.T.: -0.001 min
 Response: 2145494586
 Conc: 40.15 ng/ml



#13 Dieldrin

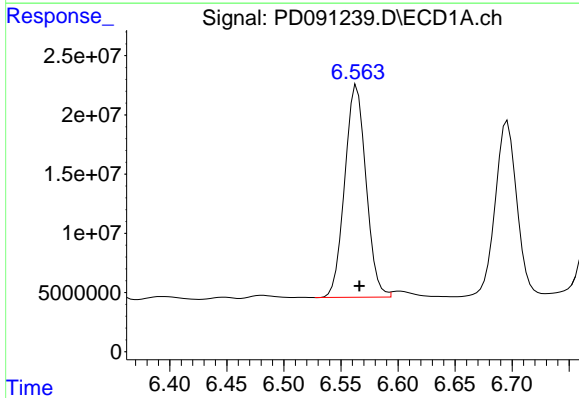
R.T.: 6.337 min
 Delta R.T.: -0.002 min
 Response: 388757906
 Conc: 60.13 ng/ml

Instrument :
 ECD_D
 ClientSampleId :



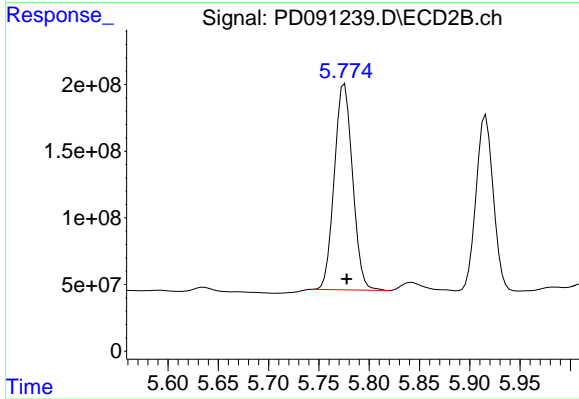
#13 Dieldrin

R.T.: 5.499 min
 Delta R.T.: -0.002 min
 Response: 3175036662
 Conc: 58.46 ng/ml



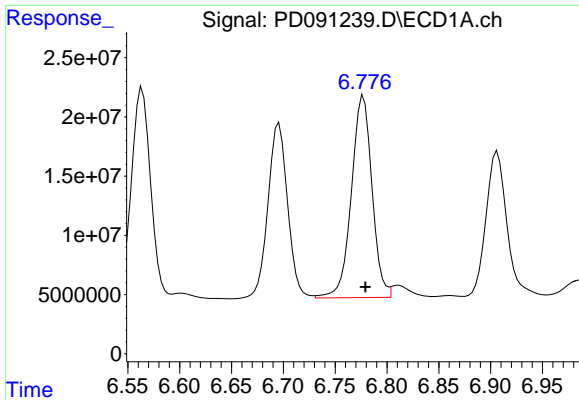
#14 Endrin

R.T.: 6.564 min
 Delta R.T.: -0.002 min
 Response: 232523428
 Conc: 46.85 ng/ml



#14 Endrin

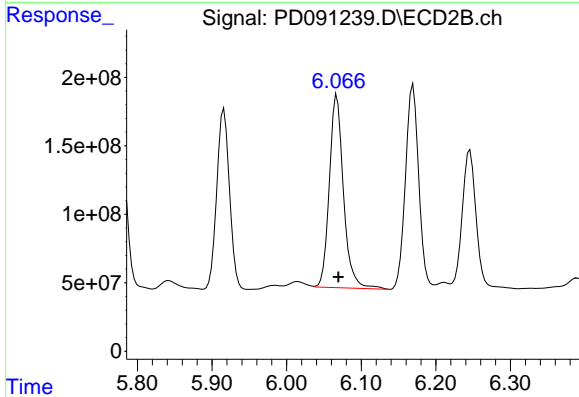
R.T.: 5.776 min
 Delta R.T.: -0.002 min
 Response: 1951240893
 Conc: 43.18 ng/ml



#15 Endosulfan II

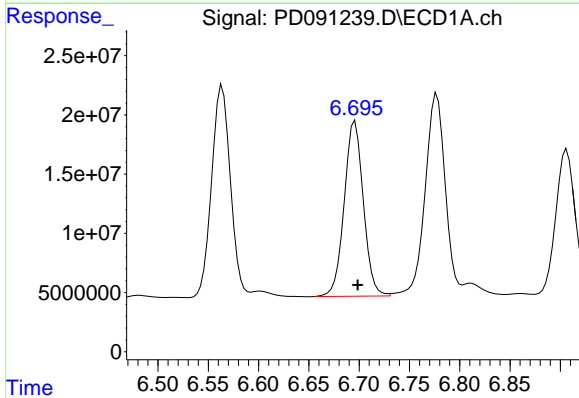
R.T.: 6.777 min
 Delta R.T.: -0.002 min
 Response: 236020858
 Conc: 42.45 ng/ml

Instrument :
 ECD_D
 ClientSampleId :



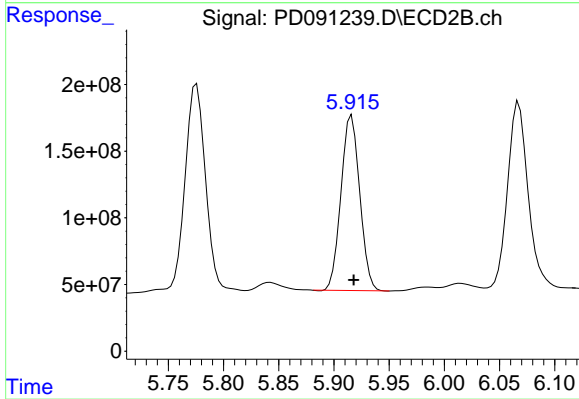
#15 Endosulfan II

R.T.: 6.067 min
 Delta R.T.: -0.002 min
 Response: 1858675176
 Conc: 39.82 ng/ml



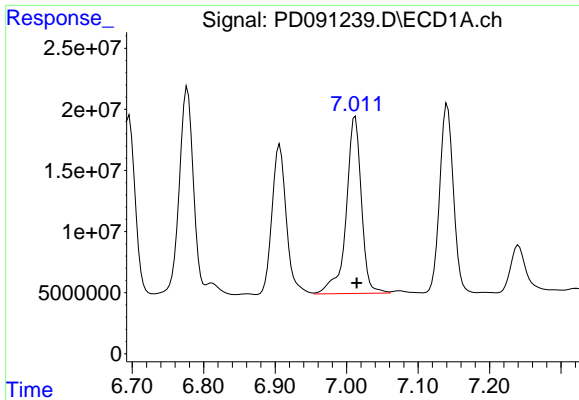
#16 4,4'-DDD

R.T.: 6.696 min
 Delta R.T.: -0.003 min
 Response: 195158118
 Conc: 39.73 ng/ml



#16 4,4'-DDD

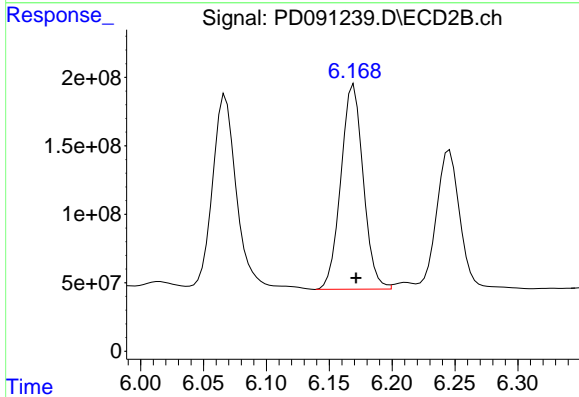
R.T.: 5.916 min
 Delta R.T.: -0.002 min
 Response: 1555271921
 Conc: 31.83 ng/ml



#17 4,4'-DDT

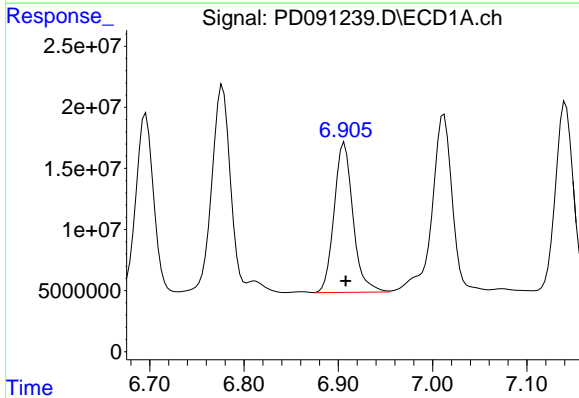
R.T.: 7.012 min
Delta R.T.: -0.002 min
Response: 214848276
Conc: 51.95 ng/ml

Instrument :
ECD_D
ClientSampleId :



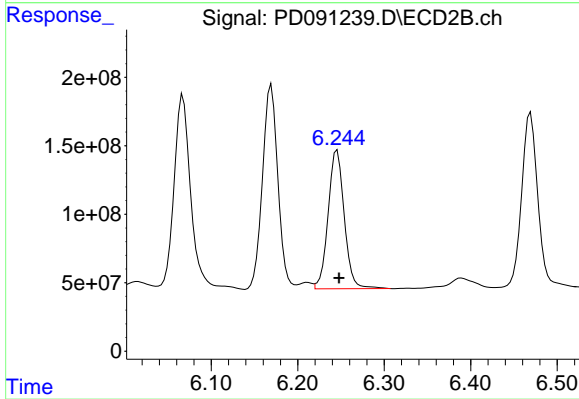
#17 4,4'-DDT

R.T.: 6.170 min
Delta R.T.: -0.002 min
Response: 1847131518
Conc: 47.20 ng/ml



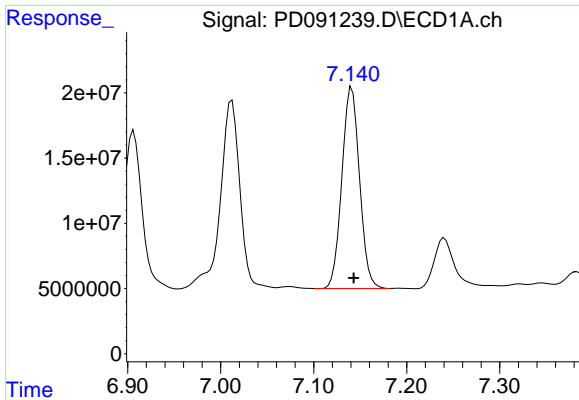
#18 Endrin aldehyde

R.T.: 6.906 min
Delta R.T.: -0.002 min
Response: 170685739
Conc: 40.97 ng/ml



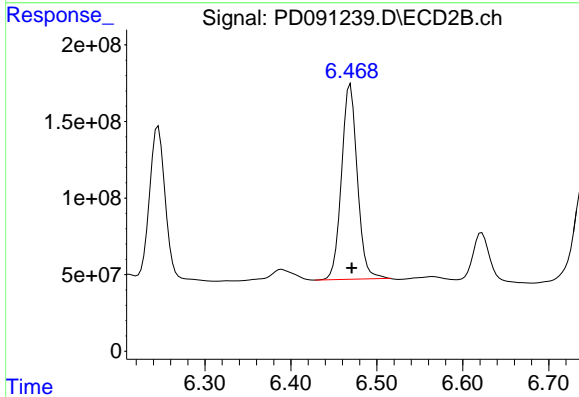
#18 Endrin aldehyde

R.T.: 6.246 min
Delta R.T.: -0.002 min
Response: 1309552591
Conc: 37.11 ng/ml

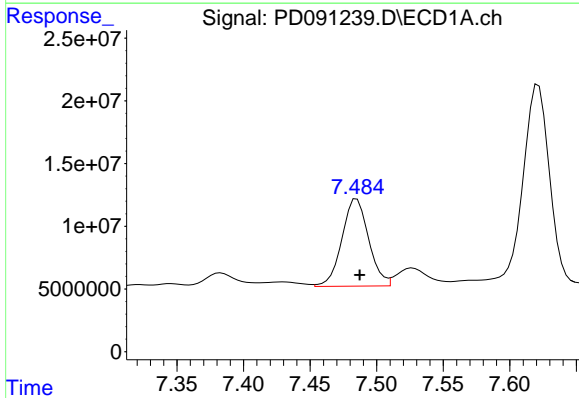


#19 Endosulfan Sulfate
 R.T.: 7.141 min
 Delta R.T.: -0.002 min
 Response: 203506093
 Conc: 39.56 ng/ml

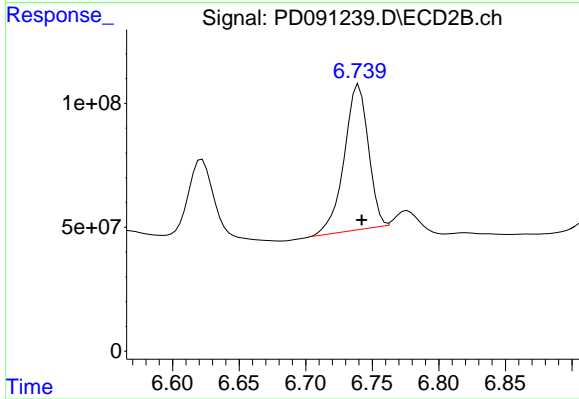
Instrument :
 ECD_D
 ClientSampleId :



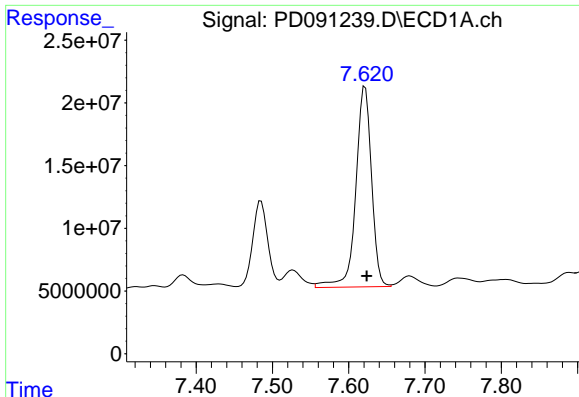
#19 Endosulfan Sulfate
 R.T.: 6.469 min
 Delta R.T.: -0.002 min
 Response: 1631440424
 Conc: 36.39 ng/ml



#20 Methoxychlor
 R.T.: 7.485 min
 Delta R.T.: -0.002 min
 Response: 97413476
 Conc: 44.80 ng/ml



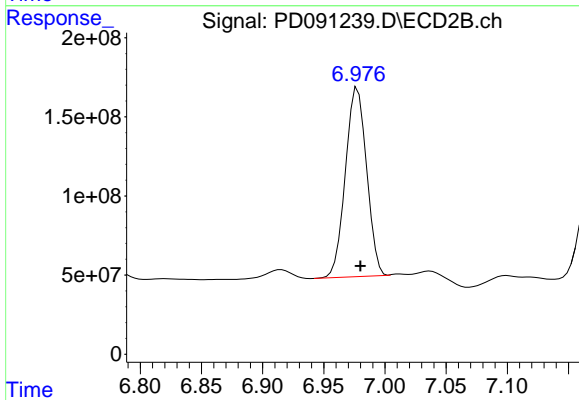
#20 Methoxychlor
 R.T.: 6.740 min
 Delta R.T.: -0.002 min
 Response: 737813055
 Conc: 36.80 ng/ml



#21 Endrin ketone

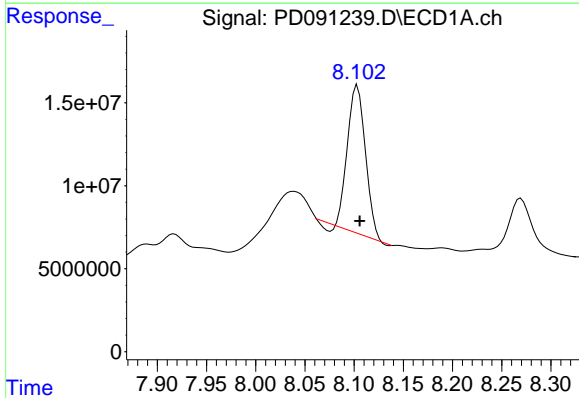
R.T.: 7.622 min
 Delta R.T.: -0.002 min
 Response: 228991521
 Conc: 40.65 ng/ml

Instrument :
 ECD_D
 ClientSampleId :



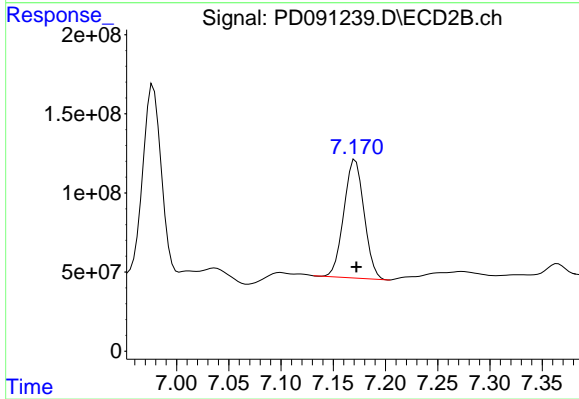
#21 Endrin ketone

R.T.: 6.978 min
 Delta R.T.: -0.002 min
 Response: 1442228865
 Conc: 28.30 ng/ml



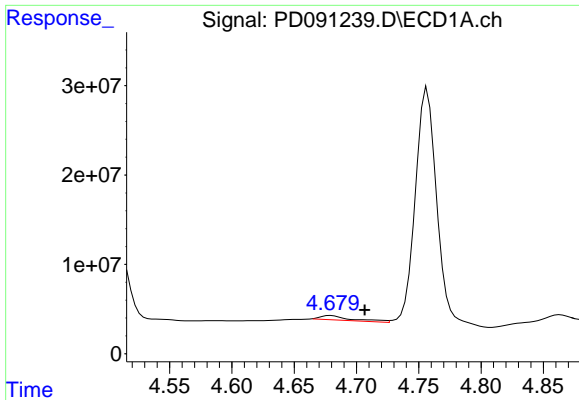
#22 Mirex

R.T.: 8.103 min
 Delta R.T.: -0.002 min
 Response: 112794990
 Conc: 31.71 ng/ml



#22 Mirex

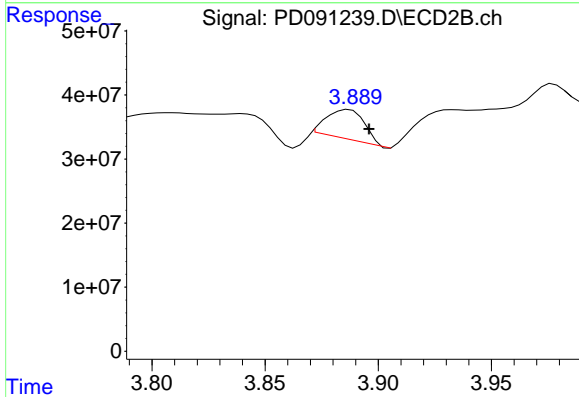
R.T.: 7.171 min
 Delta R.T.: -0.001 min
 Response: 1007320500
 Conc: 30.40 ng/ml



#23 Chlordane-1

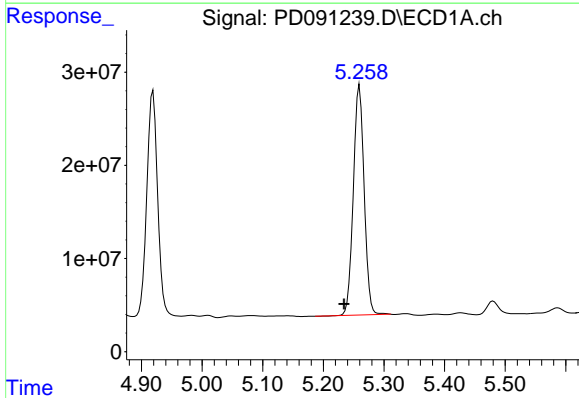
R.T.: 4.679 min
 Delta R.T.: -0.027 min
 Response: 8771889
 Conc: 35.65 ng/ml

Instrument :
 ECD_D
 ClientSampleId :



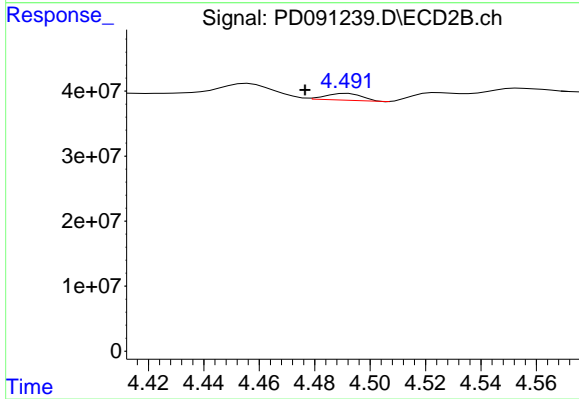
#23 Chlordane-1

R.T.: 3.887 min
 Delta R.T.: -0.009 min
 Response: 53144624
 Conc: 30.89 ng/ml



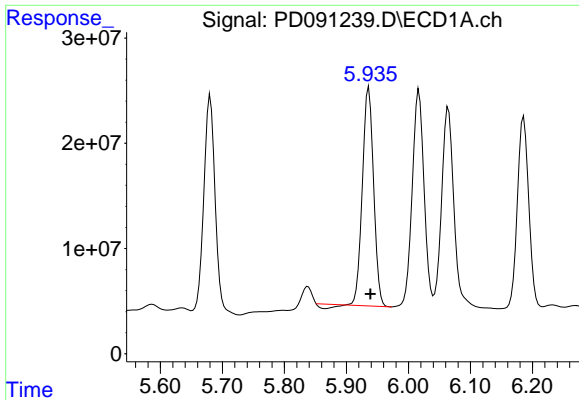
#24 Chlordane-2

R.T.: 5.260 min
 Delta R.T.: 0.025 min
 Response: 306400949
 Conc: 1240.84 ng/ml



#24 Chlordane-2

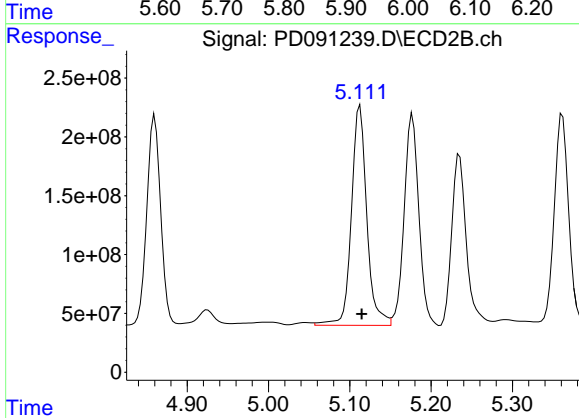
R.T.: 4.492 min
 Delta R.T.: 0.015 min
 Response: 9634494
 Conc: 5.50 ng/ml



#25 Chlordane-3

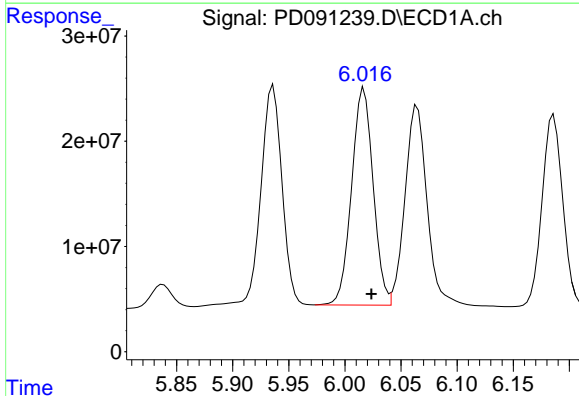
R.T.: 5.936 min
 Delta R.T.: -0.003 min
 Response: 258768650
 Conc: 268.20 ng/ml

Instrument :
 ECD_D
 ClientSampleId :



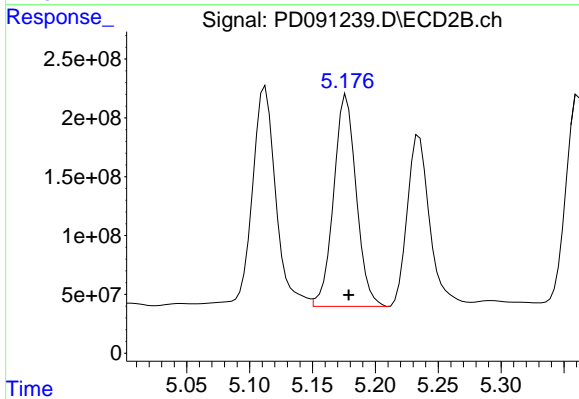
#25 Chlordane-3

R.T.: 5.113 min
 Delta R.T.: -0.002 min
 Response: 2455389820
 Conc: 426.76 ng/ml



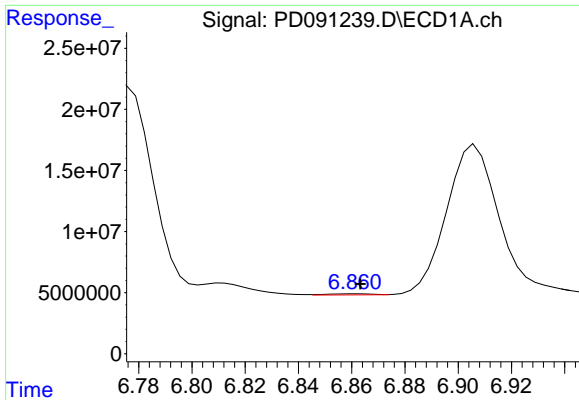
#26 Chlordane-4

R.T.: 6.017 min
 Delta R.T.: -0.006 min
 Response: 275598795
 Conc: 229.44 ng/ml



#26 Chlordane-4

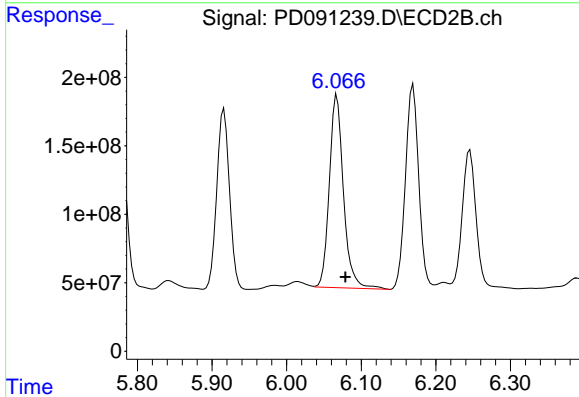
R.T.: 5.177 min
 Delta R.T.: -0.002 min
 Response: 2248933600
 Conc: 470.14 ng/ml



#27 Chlordane-5

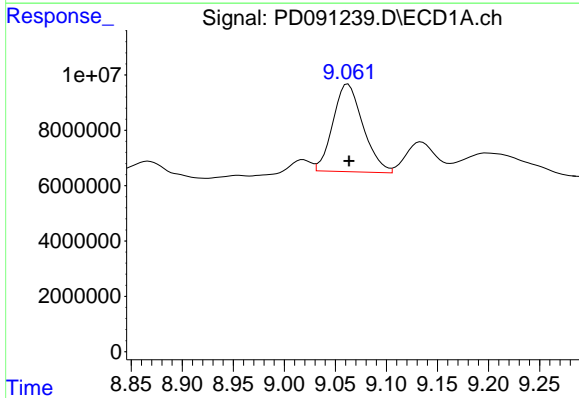
R.T.: 6.862 min
 Delta R.T.: -0.002 min
 Response: 1094611
 Conc: 5.54 ng/ml

Instrument :
 ECD_D
 ClientSampleId :



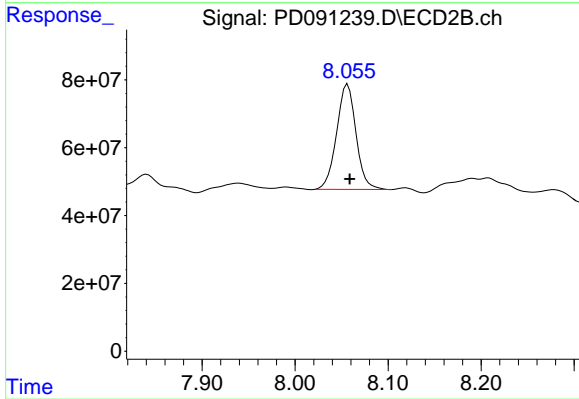
#27 Chlordane-5

R.T.: 6.067 min
 Delta R.T.: -0.011 min
 Response: 1858675176
 Conc: 915.96 ng/ml



#28 Decachlorobiphenyl

R.T.: 9.062 min
 Delta R.T.: 0.000 min
 Response: 65039166
 Conc: 13.06 ng/ml



#28 Decachlorobiphenyl

R.T.: 8.057 min
 Delta R.T.: -0.002 min
 Response: 450577007
 Conc: 11.39 ng/ml