

Data Path : Z:\pestpcbsrv\HPCHEM1\ECD\_D\Data\PD111725\  
 Data File : PD091241.D  
 Signal(s) : Signal #1: ECD1A.ch Signal #2: ECD2B.ch  
 Acq On : 17 Nov 2025 22:19  
 Operator : AR\AJ  
 Sample : Q3649-08  
 Misc :  
 ALS Vial : 23 Sample Multiplier: 1

Instrument :  
 ECD\_D  
 ClientSampleId :

Integration File signal 1: autoint1.e  
 Integration File signal 2: autoint2.e  
 Quant Time: Nov 18 01:13:41 2025  
 Quant Method : Z:\pestpcbsrv\HPCHEM1\ECD\_D\Method\PD111525.M  
 Quant Title : GC Extractables  
 QLast Update : Sat Nov 15 04:46:13 2025  
 Response via : Initial Calibration  
 Integrator: ChemStation

Volume Inj. : 1 µl  
 Signal #1 Phase : ZB-MR2 Signal #2 Phase: ZB-MR2  
 Signal #1 Info : 30M x 0.32mm x0.5 Signal #2 Info : 30M x 0.32mm x 0.25µm

	Compound	RT#1	RT#2	Resp#1	Resp#2	ng/ml	ng/ml
-----							
System Monitoring Compounds							
1)	SA Tetrachlo...	3.542	2.872	105.9E6	704.6E6	30.708	19.237 #
28)	SA Decachlor...	9.061	8.057	81091323	582.3E6	16.277	14.713
Target Compounds							
2)	A alpha-BHC	0.000	3.374	0	75660857	N.D.	1.197 #
3)	MA gamma-BHC...	0.000	3.701f	0	857832	N.D.	0.015 #
4)	MA Heptachlor	4.943f	4.079	29757462	7429633	4.155	0.135 #
5)	MB Aldrin	0.000	4.383f	0	2838460	N.D.	0.050 #
6)	B beta-BHC	4.489f	4.024	6793722	4873987	2.338	0.203 #
7)	B delta-BHC	4.765	4.241	1200922	12977621	0.162	0.222 #
8)	Heptachlo...	5.677	4.892f	4243762	15038053	0.653	0.295 #
9)	A Endosulfan I	6.062	5.265f	92887	3872285	0.015	0.081 #
10)	B gamma-Chl...	5.939	5.114	542741	9145887	0.083	0.167 #
11)	B alpha-Chl...	6.026	5.178	2419423	10150241	0.352	0.194 #
12)	B 4,4'-DDE	6.189	5.362	578124	10558562	0.100	0.198 #
13)	MA Dieldrin	0.000	5.507	0	4967310	N.D.	0.091 #
14)	MA Endrin	6.579	5.782	427952	5938374	0.086	0.131 #
15)	B Endosulfa...	6.760f	0.000	12796092	0	2.302	N.D. #
16)	A 4,4'-DDD	6.678f	0.000	260303	0	0.053	N.D. #
17)	MA 4,4'-DDT	6.994f	6.170	7672189	8299293	1.855	0.212 #
18)	B Endrin al...	0.000	6.254	0	15501711	N.D.	0.439 #
20)	A Methoxychlor	7.492	6.722f	1869026	5902831	0.860	0.294 #
21)	B Endrin ke...	0.000	6.955f	0	11756372	N.D.	0.231 #
22)	Mirex	8.113	7.172	7980922	5359540	2.244	0.162 #
24)	Chlordane-2	0.000	4.492	0	12245804	N.D.	6.993 #
25)	Chlordane-3	5.939	5.114	542741	9145887	0.563	1.590 #
26)	Chlordane-4	6.026	5.178	2419423	10150241	2.014	2.122
27)	Chlordane-5	6.865	6.113f	573312	731737	2.902	0.361 #

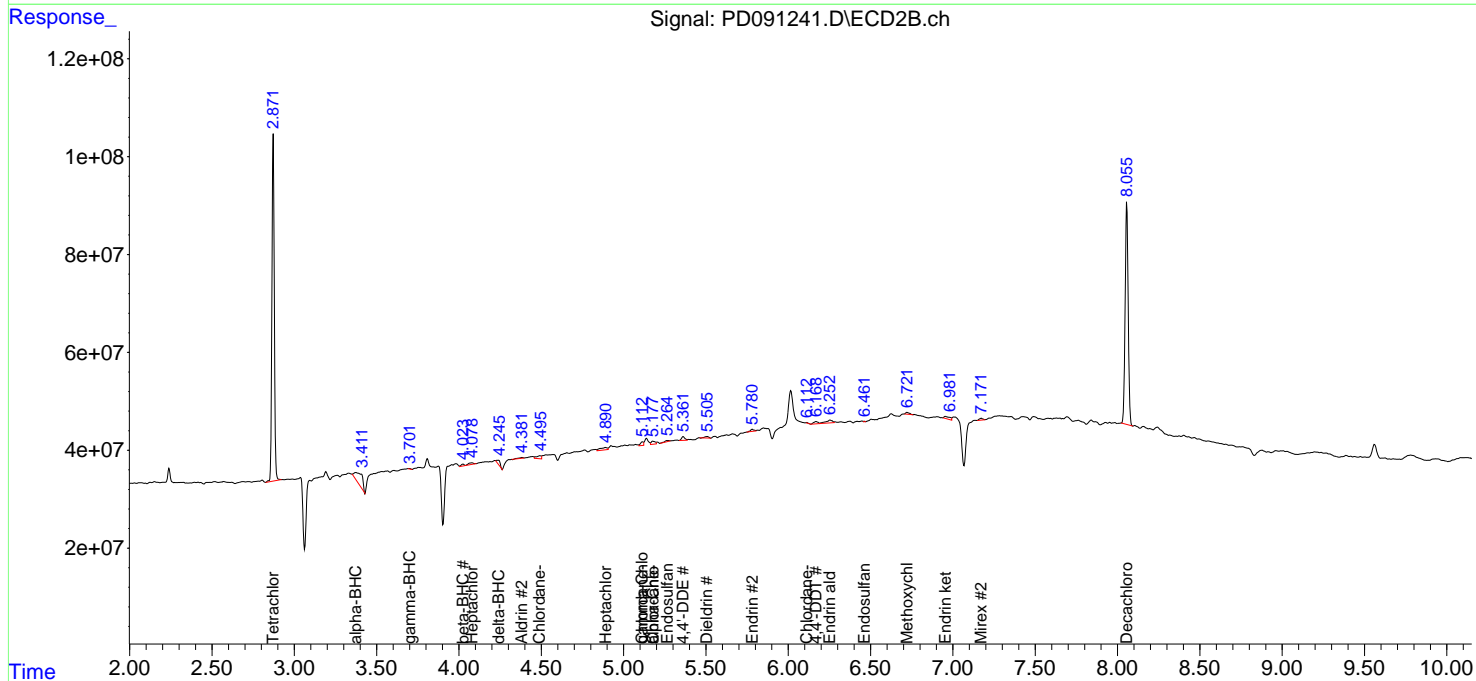
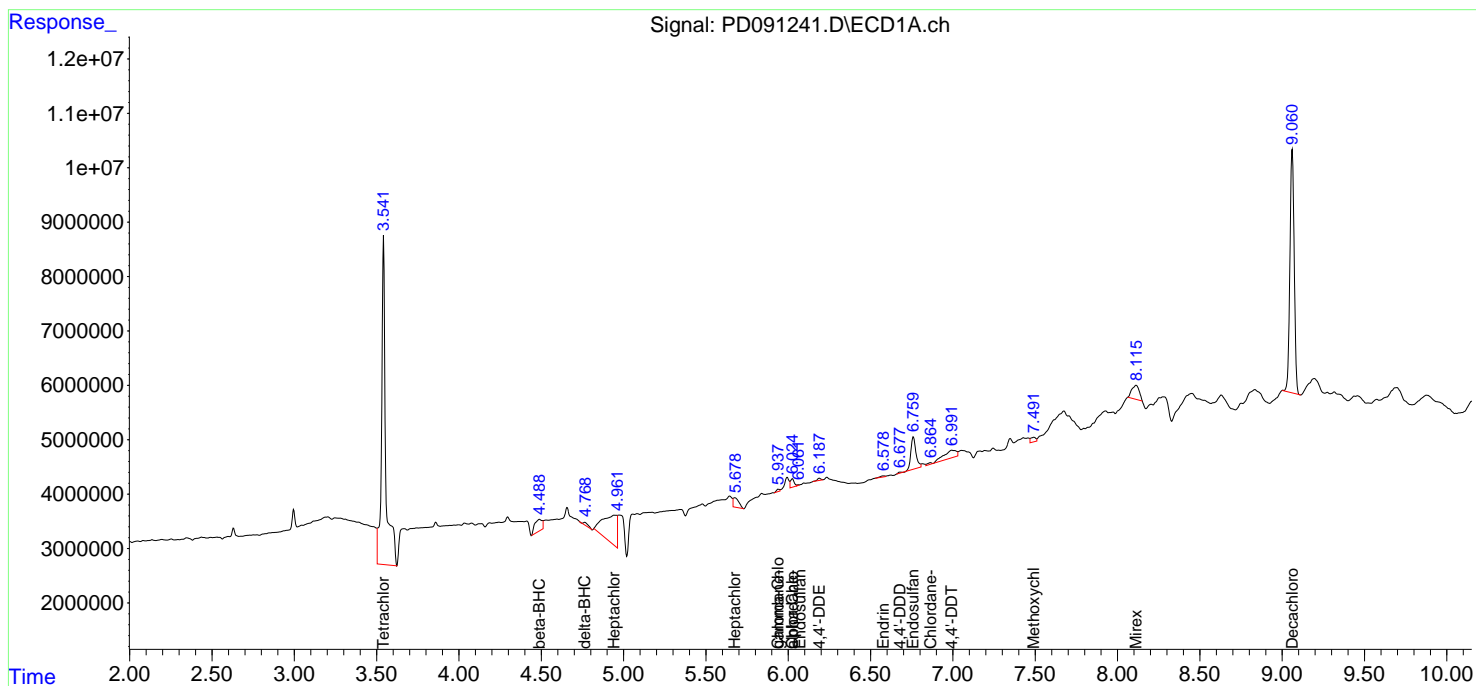
(f)=RT Delta > 1/2 Window (#)=Amounts differ by > 25% (m)=manual int.

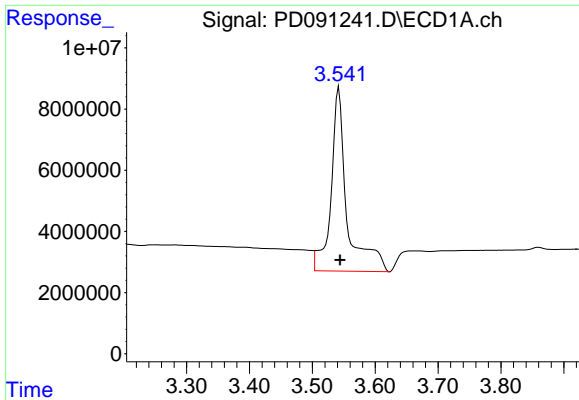
Data Path : Z:\pestpcbsrv\HPCHEM1\ECD\_D\Data\PD111725\  
 Data File : PD091241.D  
 Signal(s) : Signal #1: ECD1A.ch Signal #2: ECD2B.ch  
 Acq On : 17 Nov 2025 22:19  
 Operator : AR\AJ  
 Sample : Q3649-08  
 Misc :  
 ALS Vial : 23 Sample Multiplier: 1

Instrument :  
 ECD\_D  
 ClientSampleId :

Integration File signal 1: autoint1.e  
 Integration File signal 2: autoint2.e  
 Quant Time: Nov 18 01:13:41 2025  
 Quant Method : Z:\pestpcbsrv\HPCHEM1\ECD\_D\Method\PD111525.M  
 Quant Title : GC Extractables  
 QLast Update : Sat Nov 15 04:46:13 2025  
 Response via : Initial Calibration  
 Integrator: ChemStation

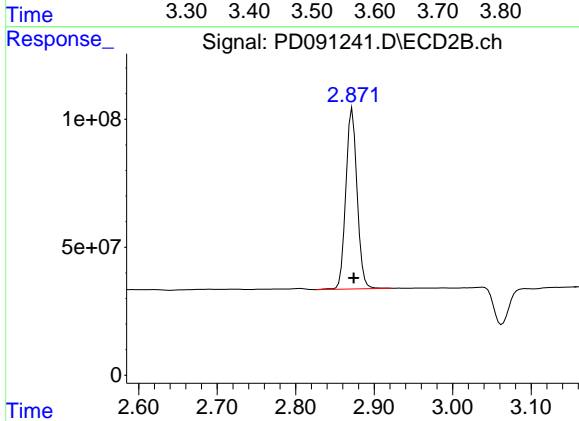
Volume Inj. : 1 µl  
 Signal #1 Phase : ZB-MR1 Signal #2 Phase: ZB-MR2  
 Signal #1 Info : 30M x 0.32mm x0.5 Signal #2 Info : 30M x 0.32mm x 0.25µm



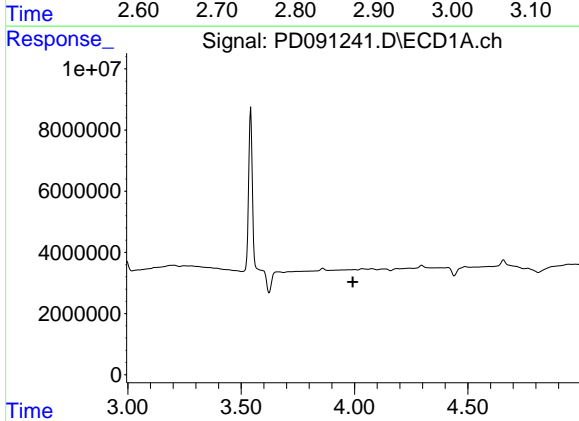


#1 Tetrachloro-m-xylene  
 R.T.: 3.542 min  
 Delta R.T.: -0.002 min  
 Response: 105900492  
 Conc: 30.71 ng/ml

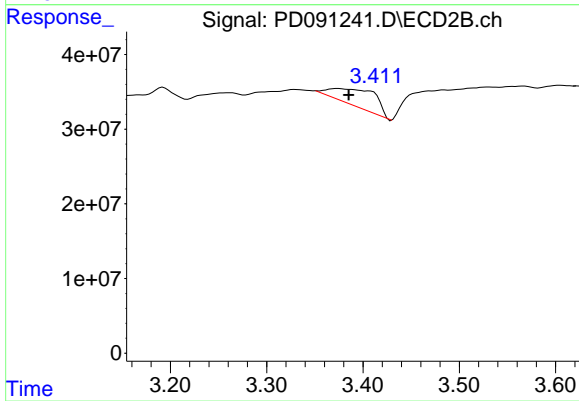
Instrument :  
 ECD\_D  
 ClientSampleId :



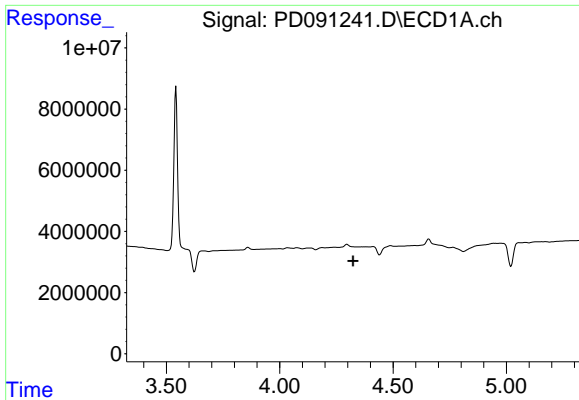
#1 Tetrachloro-m-xylene  
 R.T.: 2.872 min  
 Delta R.T.: -0.002 min  
 Response: 704645244  
 Conc: 19.24 ng/ml



#2 alpha-BHC  
 R.T.: 0.000 min  
 Exp R.T. : 3.993 min  
 Response: 0  
 Conc: N.D.



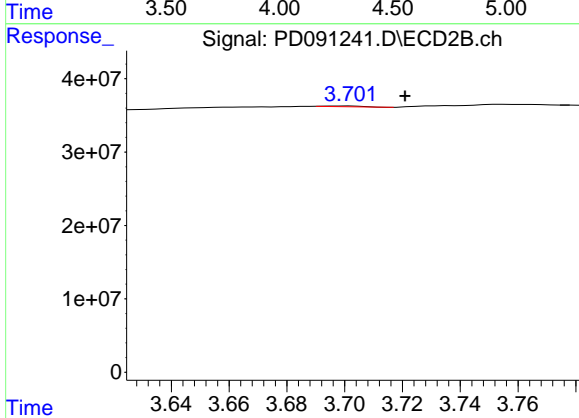
#2 alpha-BHC  
 R.T.: 3.374 min  
 Delta R.T.: -0.012 min  
 Response: 75660857  
 Conc: 1.20 ng/ml



#3 gamma-BHC (Lindane)

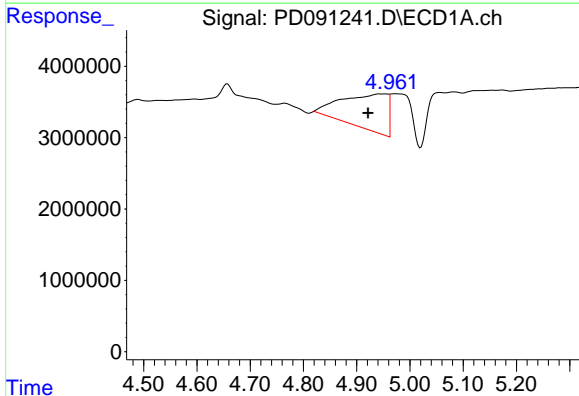
R.T.: 0.000 min  
 Exp R.T.: 4.324 min  
 Response: 0  
 Conc: N.D.

Instrument :  
 ECD\_D  
 ClientSampleId :



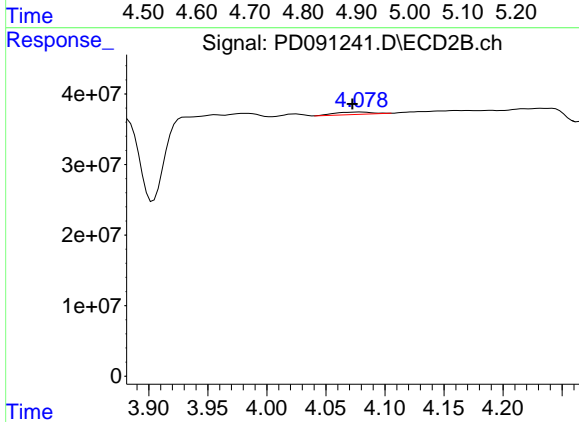
#3 gamma-BHC (Lindane)

R.T.: 3.701 min  
 Delta R.T.: -0.020 min  
 Response: 857832  
 Conc: 0.01 ng/ml



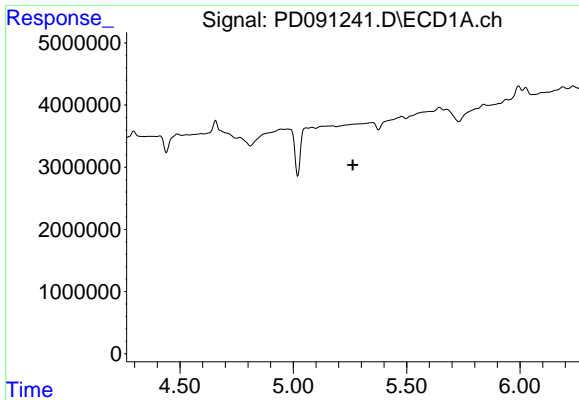
#4 Heptachlor

R.T.: 4.943 min  
 Delta R.T.: 0.022 min  
 Response: 29757462  
 Conc: 4.16 ng/ml



#4 Heptachlor

R.T.: 4.079 min  
 Delta R.T.: 0.007 min  
 Response: 7429633  
 Conc: 0.13 ng/ml

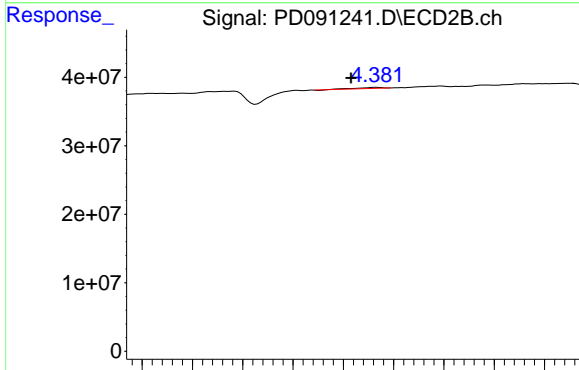


#5 Aldrin

R.T.: 0.000 min  
 Exp R.T.: 5.262 min  
 Response: 0  
 Conc: N.D.

Instrument :  
 ECD\_D  
 ClientSampleId :

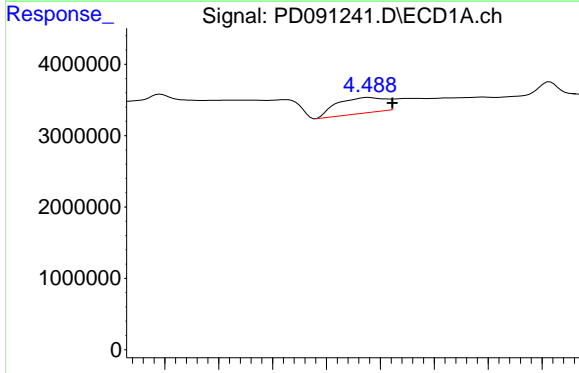
Time



#5 Aldrin

R.T.: 4.383 min  
 Delta R.T.: 0.026 min  
 Response: 2838460  
 Conc: 0.05 ng/ml

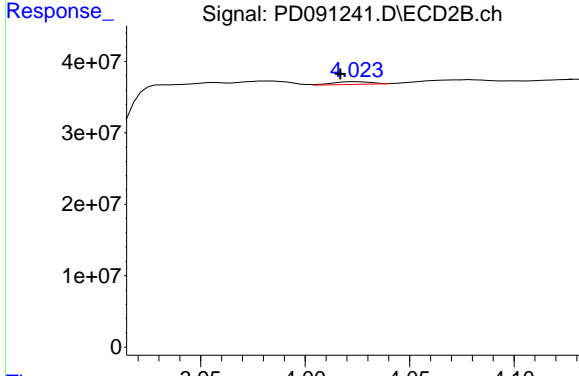
Time



#6 beta-BHC

R.T.: 4.489 min  
 Delta R.T.: -0.022 min  
 Response: 6793722  
 Conc: 2.34 ng/ml

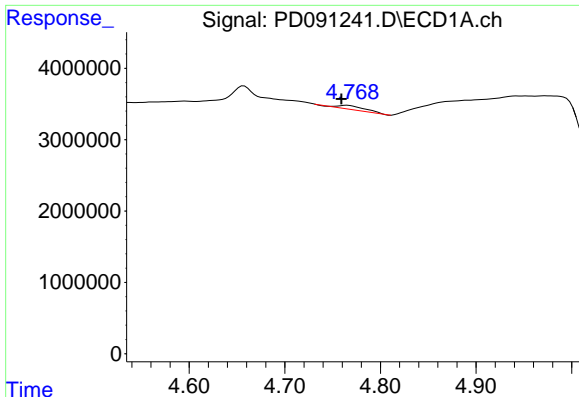
Time



#6 beta-BHC

R.T.: 4.024 min  
 Delta R.T.: 0.008 min  
 Response: 4873987  
 Conc: 0.20 ng/ml

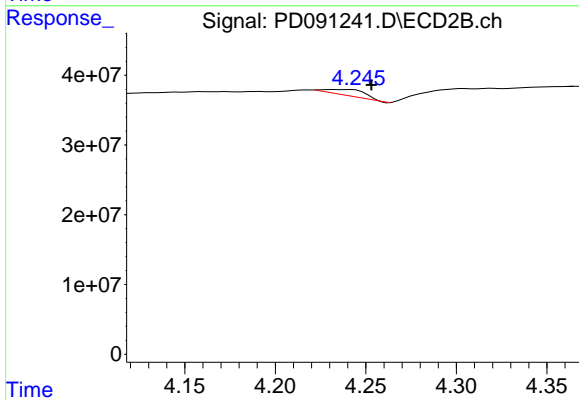
Time



#7 delta-BHC

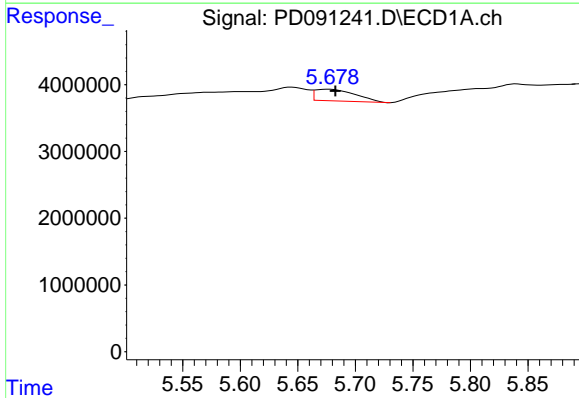
R.T.: 4.765 min  
 Delta R.T.: 0.006 min  
 Response: 1200922  
 Conc: 0.16 ng/ml

Instrument :  
 ECD\_D  
 ClientSampleId :



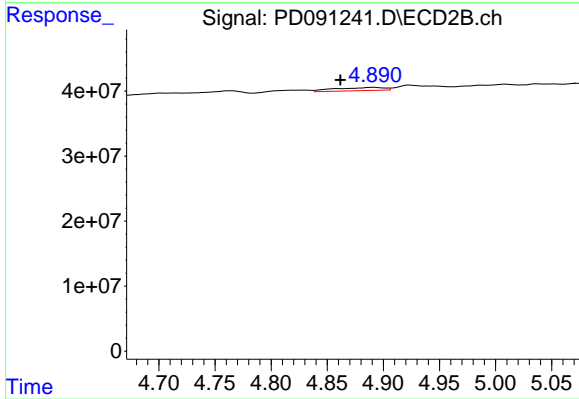
#7 delta-BHC

R.T.: 4.241 min  
 Delta R.T.: -0.012 min  
 Response: 12977621  
 Conc: 0.22 ng/ml



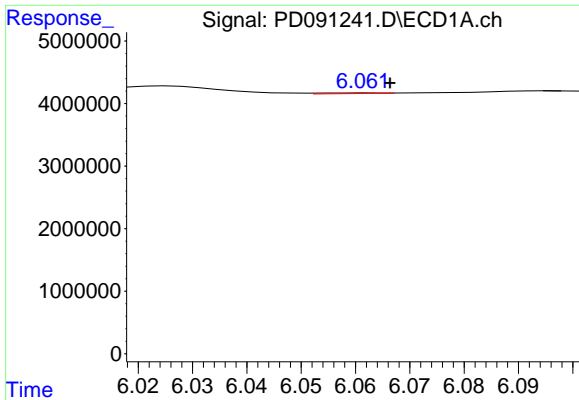
#8 Heptachlor epoxide

R.T.: 5.677 min  
 Delta R.T.: -0.006 min  
 Response: 4243762  
 Conc: 0.65 ng/ml



#8 Heptachlor epoxide

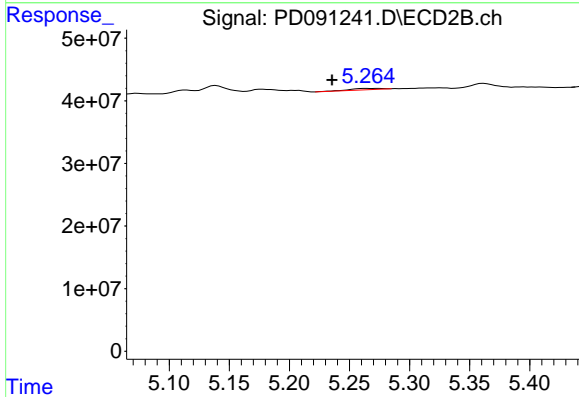
R.T.: 4.892 min  
 Delta R.T.: 0.030 min  
 Response: 15038053  
 Conc: 0.30 ng/ml



#9 Endosulfan I

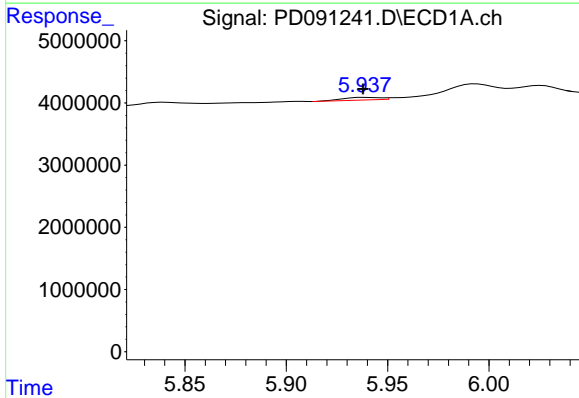
R.T.: 6.062 min  
 Delta R.T.: -0.005 min  
 Response: 92887  
 Conc: 0.02 ng/ml

Instrument :  
 ECD\_D  
 ClientSampleId :



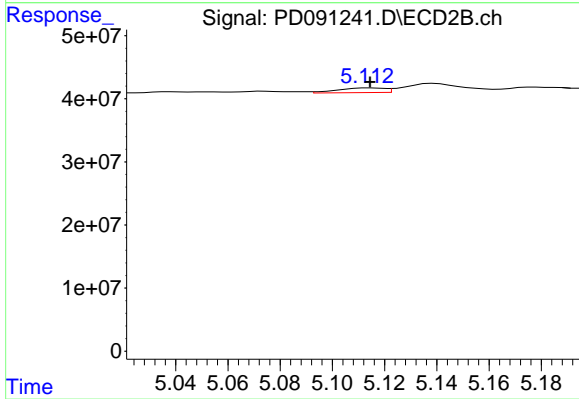
#9 Endosulfan I

R.T.: 5.265 min  
 Delta R.T.: 0.029 min  
 Response: 3872285  
 Conc: 0.08 ng/ml



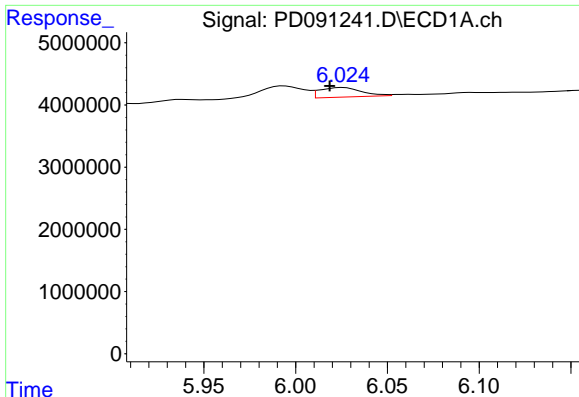
#10 gamma-Chlordane

R.T.: 5.939 min  
 Delta R.T.: 0.000 min  
 Response: 542741  
 Conc: 0.08 ng/ml



#10 gamma-Chlordane

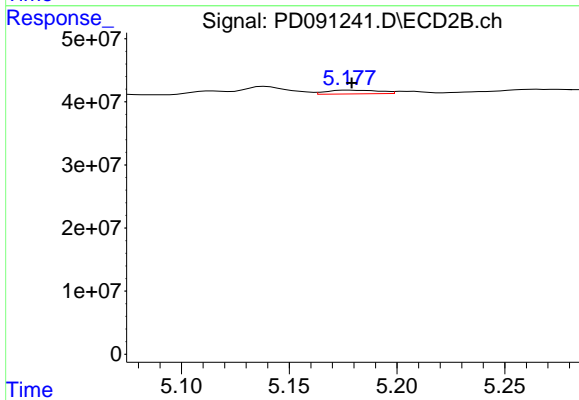
R.T.: 5.114 min  
 Delta R.T.: 0.000 min  
 Response: 9145887  
 Conc: 0.17 ng/ml



#11 alpha-Chlordane

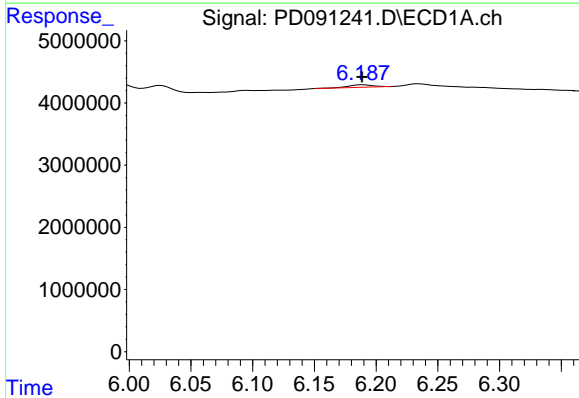
R.T.: 6.026 min  
 Delta R.T.: 0.007 min  
 Response: 2419423  
 Conc: 0.35 ng/ml

Instrument :  
 ECD\_D  
 ClientSampleId :



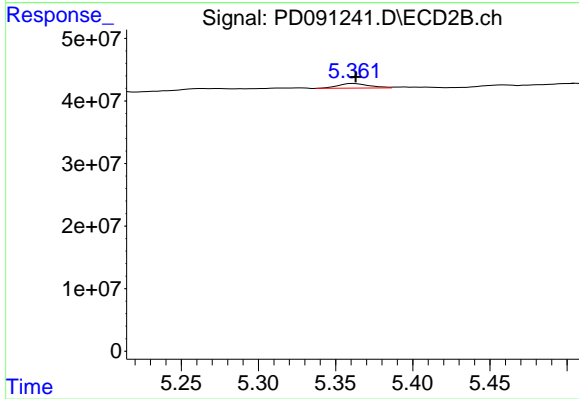
#11 alpha-Chlordane

R.T.: 5.178 min  
 Delta R.T.: 0.000 min  
 Response: 10150241  
 Conc: 0.19 ng/ml



#12 4,4'-DDE

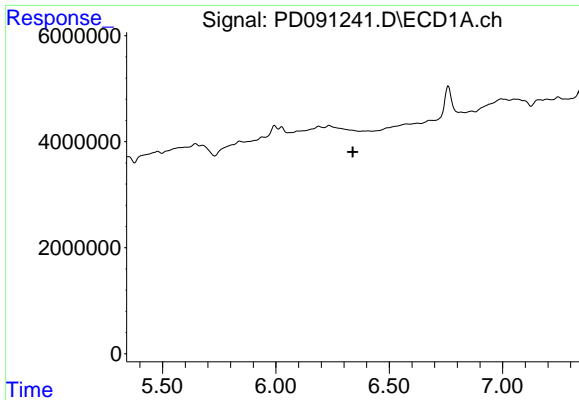
R.T.: 6.189 min  
 Delta R.T.: 0.000 min  
 Response: 578124  
 Conc: 0.10 ng/ml



#12 4,4'-DDE

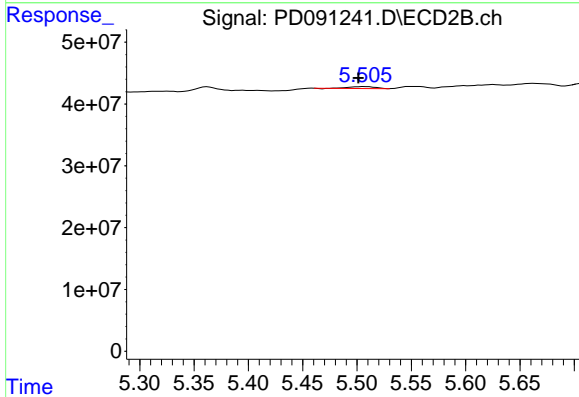
R.T.: 5.362 min  
 Delta R.T.: 0.000 min  
 Response: 10558562  
 Conc: 0.20 ng/ml



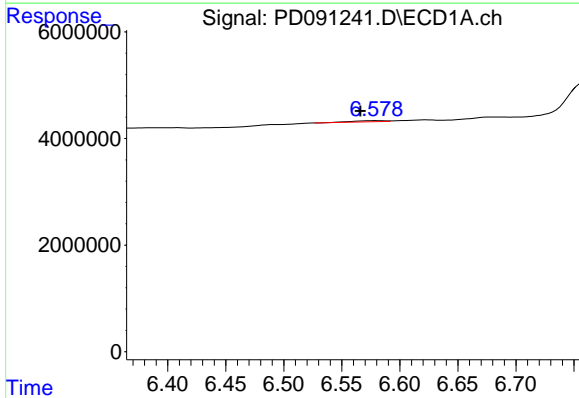


#13 Dieldrin  
 R.T.: 0.000 min  
 Exp R.T.: 6.339 min  
 Response: 0  
 Conc: N.D.

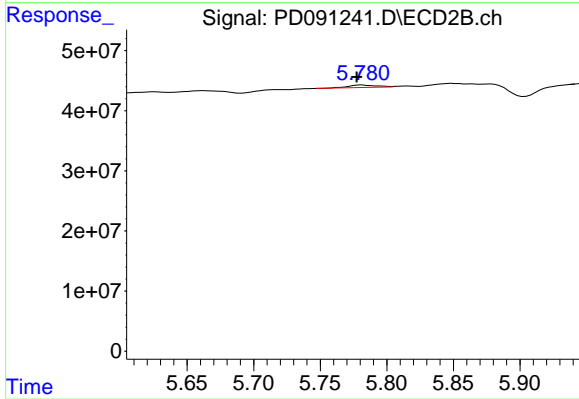
Instrument :  
 ECD\_D  
 ClientSampleId :



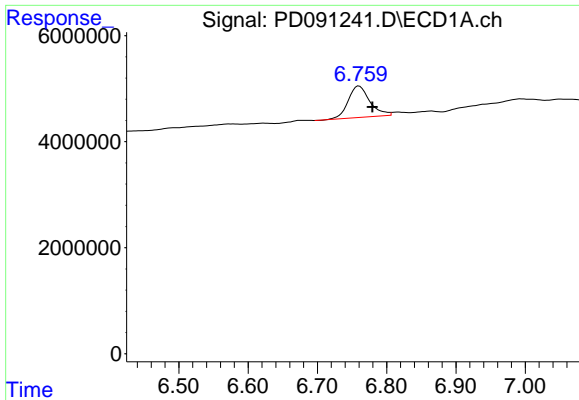
#13 Dieldrin  
 R.T.: 5.507 min  
 Delta R.T.: 0.006 min  
 Response: 4967310  
 Conc: 0.09 ng/ml



#14 Endrin  
 R.T.: 6.579 min  
 Delta R.T.: 0.013 min  
 Response: 427952  
 Conc: 0.09 ng/ml



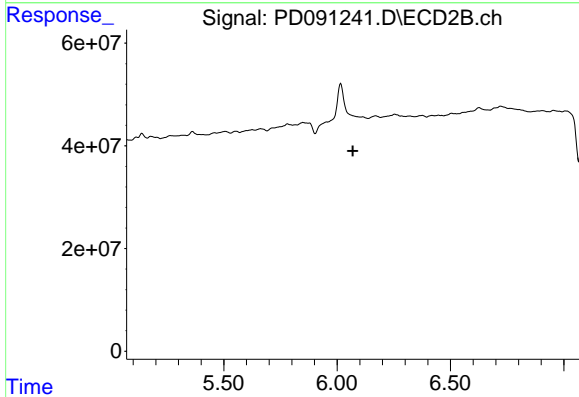
#14 Endrin  
 R.T.: 5.782 min  
 Delta R.T.: 0.004 min  
 Response: 5938374  
 Conc: 0.13 ng/ml



#15 Endosulfan II

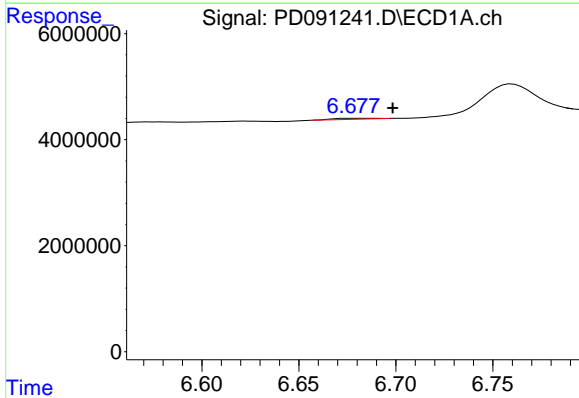
R.T.: 6.760 min  
 Delta R.T.: -0.019 min  
 Response: 12796092  
 Conc: 2.30 ng/ml

Instrument :  
 ECD\_D  
 ClientSampleId :



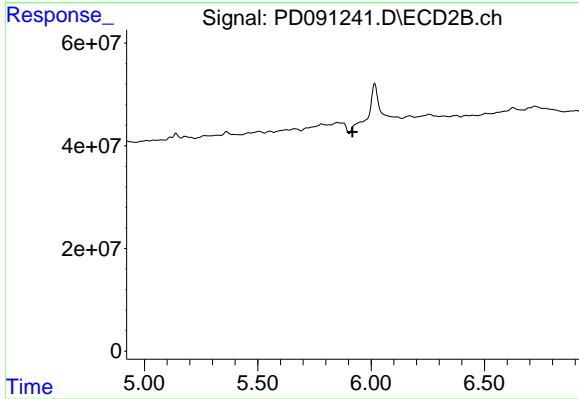
#15 Endosulfan II

R.T.: 0.000 min  
 Exp R.T. : 6.069 min  
 Response: 0  
 Conc: N.D.



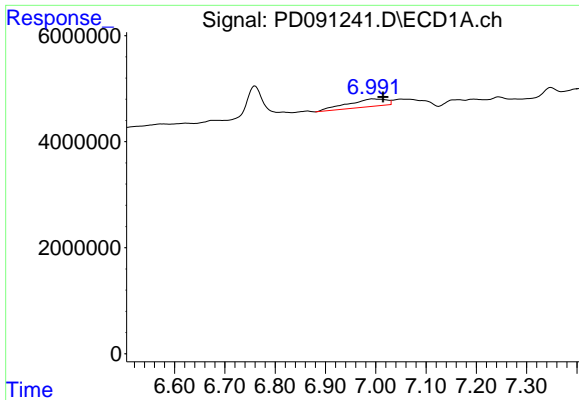
#16 4,4'-DDD

R.T.: 6.678 min  
 Delta R.T.: -0.020 min  
 Response: 260303  
 Conc: 0.05 ng/ml



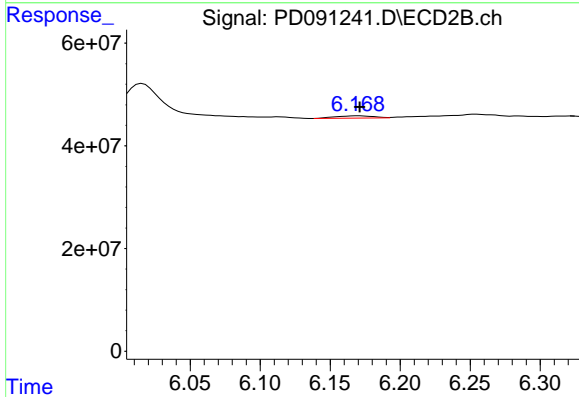
#16 4,4'-DDD

R.T.: 0.000 min  
 Exp R.T. : 5.918 min  
 Response: 0  
 Conc: N.D.

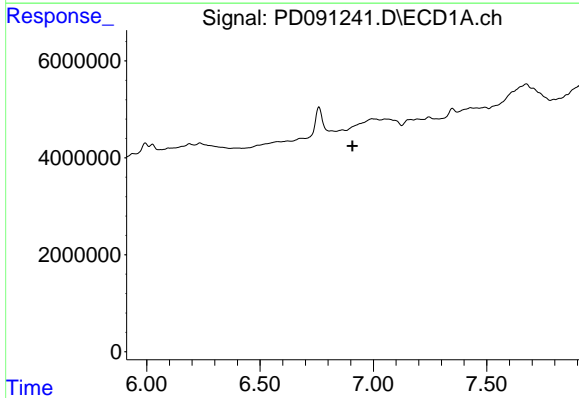


#17 4,4'-DDT  
 R.T.: 6.994 min  
 Delta R.T.: -0.021 min  
 Response: 7672189  
 Conc: 1.86 ng/ml

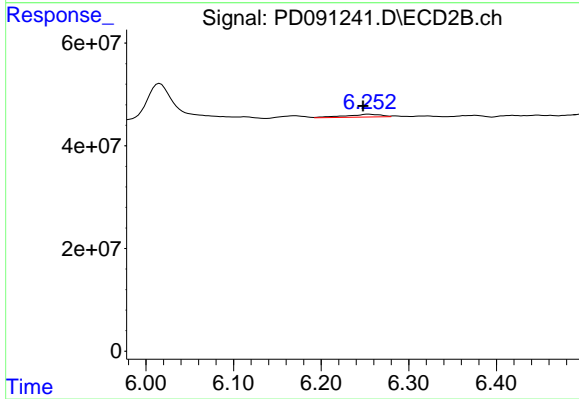
Instrument :  
 ECD\_D  
 ClientSampleId :



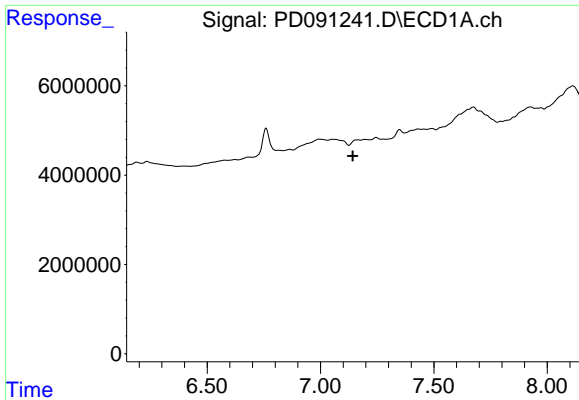
#17 4,4'-DDT  
 R.T.: 6.170 min  
 Delta R.T.: -0.001 min  
 Response: 8299293  
 Conc: 0.21 ng/ml



#18 Endrin aldehyde  
 R.T.: 0.000 min  
 Exp R.T. : 6.908 min  
 Response: 0  
 Conc: N.D.

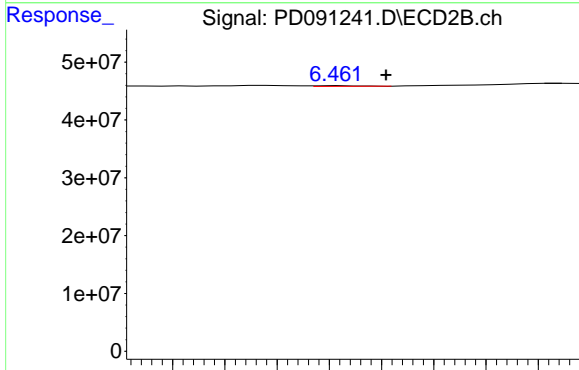


#18 Endrin aldehyde  
 R.T.: 6.254 min  
 Delta R.T.: 0.006 min  
 Response: 15501711  
 Conc: 0.44 ng/ml

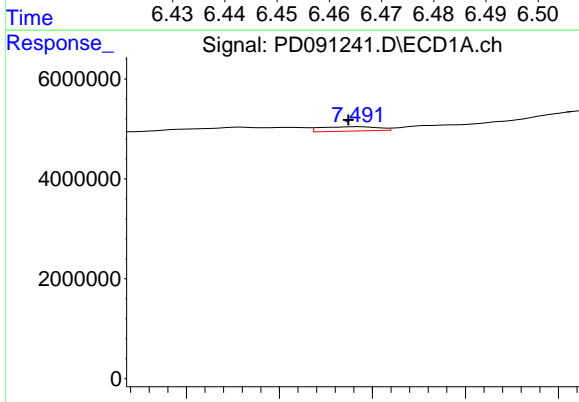


#19 Endosulfan Sulfate  
 R.T.: 7.166 min  
 Delta R.T.: 0.023 min  
 Response: -1123646  
 Conc: N.D.

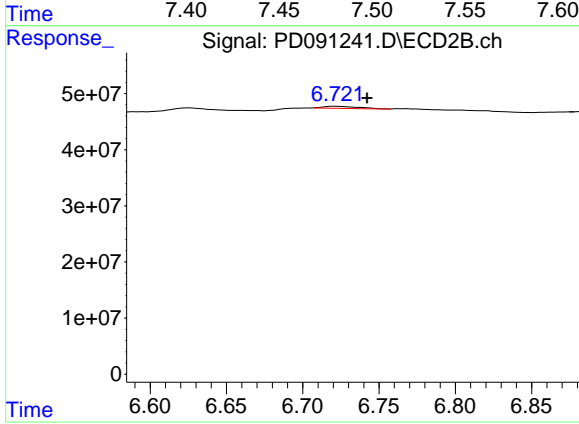
Instrument :  
 ECD\_D  
 ClientSampleId :



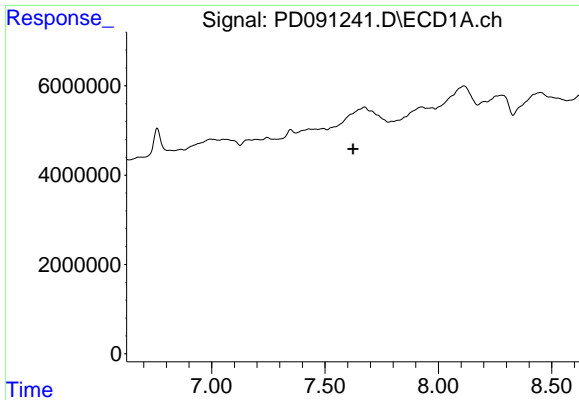
#19 Endosulfan Sulfate  
 R.T.: 6.462 min  
 Delta R.T.: -0.009 min  
 Response: 604513  
 Conc: 0.01 ng/ml



#20 Methoxychlor  
 R.T.: 7.492 min  
 Delta R.T.: 0.005 min  
 Response: 1869026  
 Conc: 0.86 ng/ml



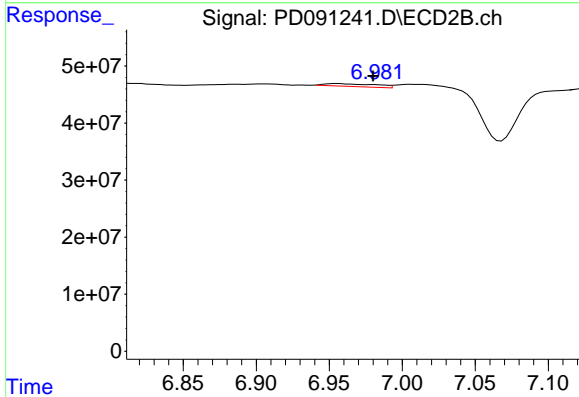
#20 Methoxychlor  
 R.T.: 6.722 min  
 Delta R.T.: -0.021 min  
 Response: 5902831  
 Conc: 0.29 ng/ml



#21 Endrin ketone

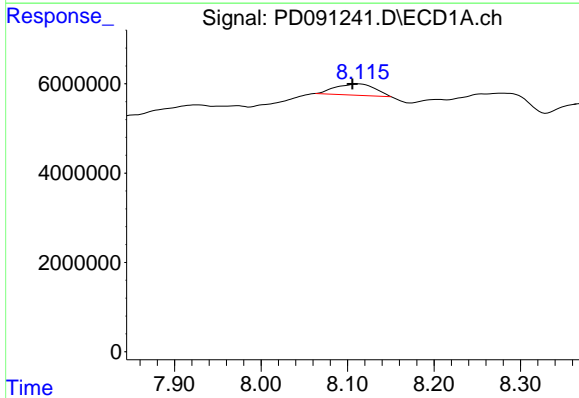
R.T.: 0.000 min  
 Exp R.T.: 7.624 min  
 Response: 0  
 Conc: N.D.

Instrument :  
 ECD\_D  
 ClientSampleId :



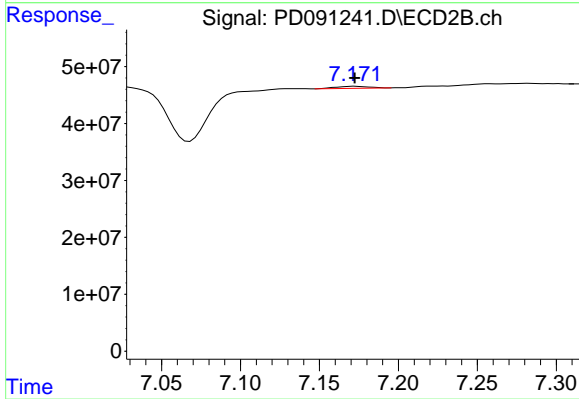
#21 Endrin ketone

R.T.: 6.955 min  
 Delta R.T.: -0.025 min  
 Response: 11756372  
 Conc: 0.23 ng/ml



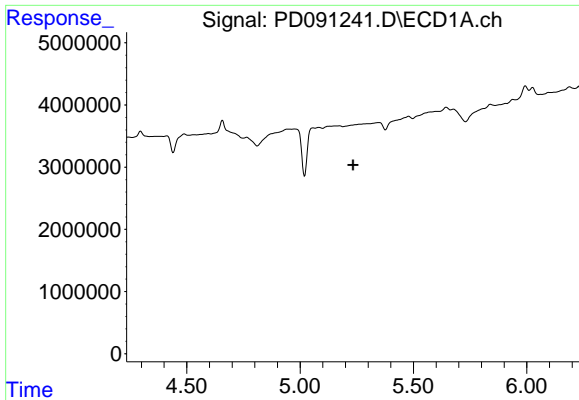
#22 Mirex

R.T.: 8.113 min  
 Delta R.T.: 0.008 min  
 Response: 7980922  
 Conc: 2.24 ng/ml



#22 Mirex

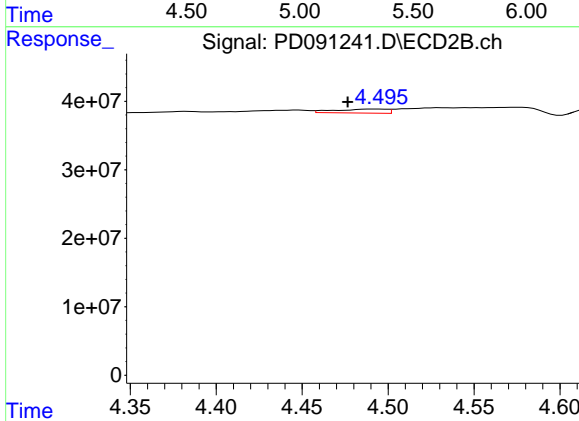
R.T.: 7.172 min  
 Delta R.T.: 0.000 min  
 Response: 5359540  
 Conc: 0.16 ng/ml



#24 Chlordane-2

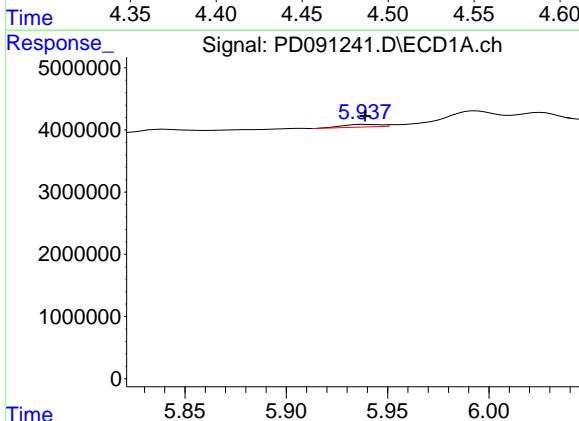
R.T.: 0.000 min  
 Exp R.T.: 5.234 min  
 Response: 0  
 Conc: N.D.

Instrument :  
 ECD\_D  
 ClientSampleId :



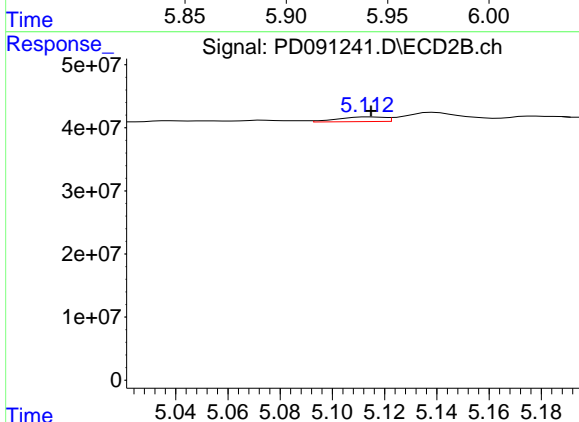
#24 Chlordane-2

R.T.: 4.492 min  
 Delta R.T.: 0.015 min  
 Response: 12245804  
 Conc: 6.99 ng/ml



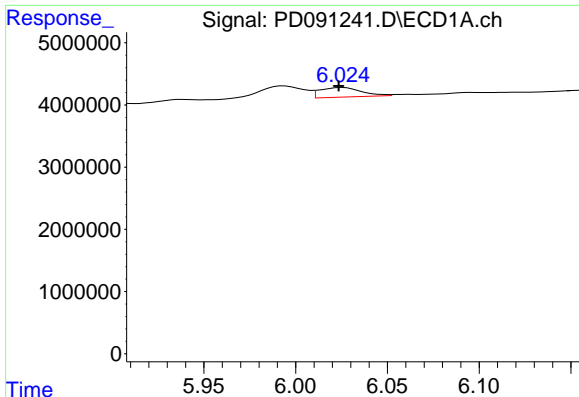
#25 Chlordane-3

R.T.: 5.939 min  
 Delta R.T.: 0.000 min  
 Response: 542741  
 Conc: 0.56 ng/ml



#25 Chlordane-3

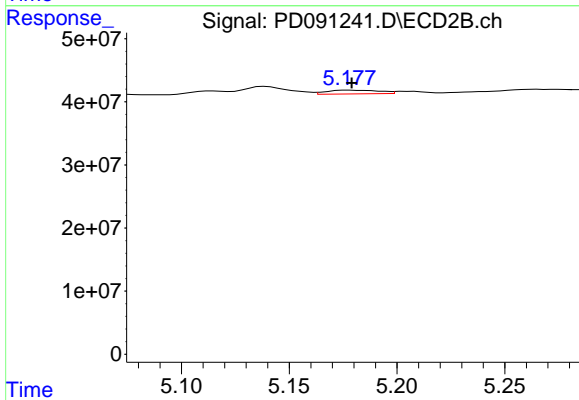
R.T.: 5.114 min  
 Delta R.T.: -0.001 min  
 Response: 9145887  
 Conc: 1.59 ng/ml



#26 Chlordane-4

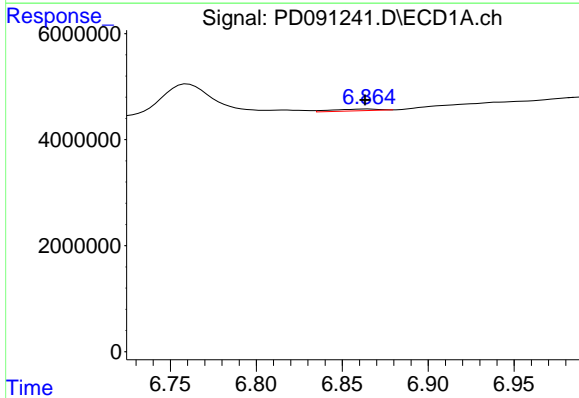
R.T.: 6.026 min  
 Delta R.T.: 0.002 min  
 Response: 2419423  
 Conc: 2.01 ng/ml

Instrument :  
 ECD\_D  
 ClientSampleId :



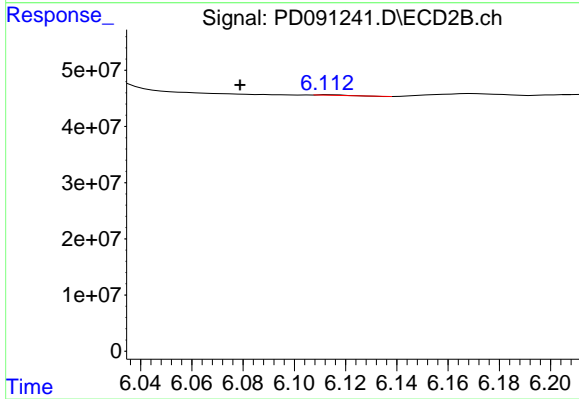
#26 Chlordane-4

R.T.: 5.178 min  
 Delta R.T.: 0.000 min  
 Response: 10150241  
 Conc: 2.12 ng/ml



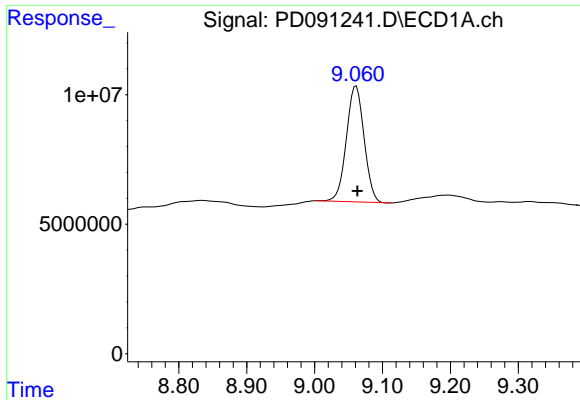
#27 Chlordane-5

R.T.: 6.865 min  
 Delta R.T.: 0.002 min  
 Response: 573312  
 Conc: 2.90 ng/ml



#27 Chlordane-5

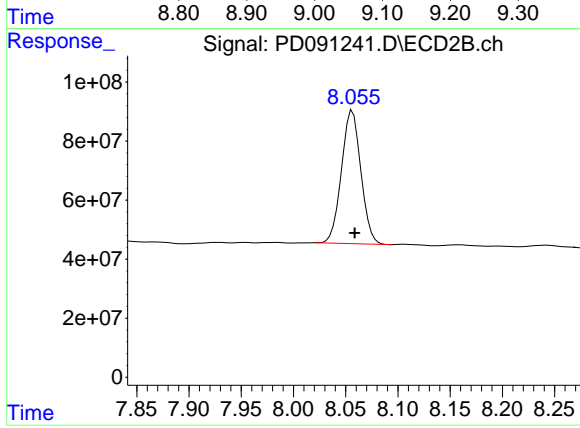
R.T.: 6.113 min  
 Delta R.T.: 0.034 min  
 Response: 731737  
 Conc: 0.36 ng/ml



#28 Decachlorobiphenyl

R.T.: 9.061 min  
Delta R.T.: -0.002 min  
Response: 81091323  
Conc: 16.28 ng/ml

Instrument :  
ECD\_D  
ClientSampleId :



#28 Decachlorobiphenyl

R.T.: 8.057 min  
Delta R.T.: -0.002 min  
Response: 582269683  
Conc: 14.71 ng/ml