

Data Path : Z:\pestpcbsrv\HPCHEM1\ECD_D\Data\PD112221\
 Data File : PD067049.D
 Signal(s) : Signal #1: ECD1A.ch Signal #2: ECD2B.ch
 Acq On : 22 Nov 2021 08:47
 Operator : AR\AJ
 Sample : HEXANE
 Misc :
 ALS Vial : 1 Sample Multiplier: 1

Instrument :
 ECD_D
 ClientSampleId :
 HEXANE

Integration File signal 1: autoint1.e
 Integration File signal 2: autoint2.e
 Quant Time: Nov 23 04:53:27 2021
 Quant Method : Z:\pestpcbsrv\HPCHEM1\ECD_D\Method\PD102821.M
 Quant Title : GC Extractables
 QLast Update : Thu Oct 28 02:17:57 2021
 Response via : Initial Calibration
 Integrator: ChemStation

Volume Inj. : 2 µl
 Signal #1 Phase : ZB-MR2 Signal #2 Phase: ZB-MR1
 Signal #1 Info : 30M x 0.32mm x0.2 Signal #2 Info : 30M x 0.32mm x 0.50µm

Compound	RT#1	RT#2	Resp#1	Resp#2	ng/ml	ng/ml

System Monitoring Compounds						
28) SA Decachlor...	0.000	9.041f	0	2261966	N.D.	0.420 #
Target Compounds						
7) B delta-BHC	0.000	5.050	0	2081102	N.D.	0.228 #
9) A Endosulfan I	5.466	0.000	1673667	0	0.705	N.D. #
11) B alpha-Chl...	0.000	6.161f	0	162340	N.D.	0.020 #
14) MA Endrin	5.990f	6.678	1820358	13421261	0.870	1.950 #
15) B Endosulfa...	6.275f	0.000	3417794	0	1.719	N.D. #
18) B Endrin al...	0.000	6.987f	0	2616645	N.D.	0.460 #
22) Mirex	0.000	8.149	0	6189759	N.D.	1.047 #
26) Chlordane-4	0.000	6.161f	0	162340	N.D.	0.129 #
27) Chlordane-5	6.275f	0.000	3417794	0	40.413	N.D. #

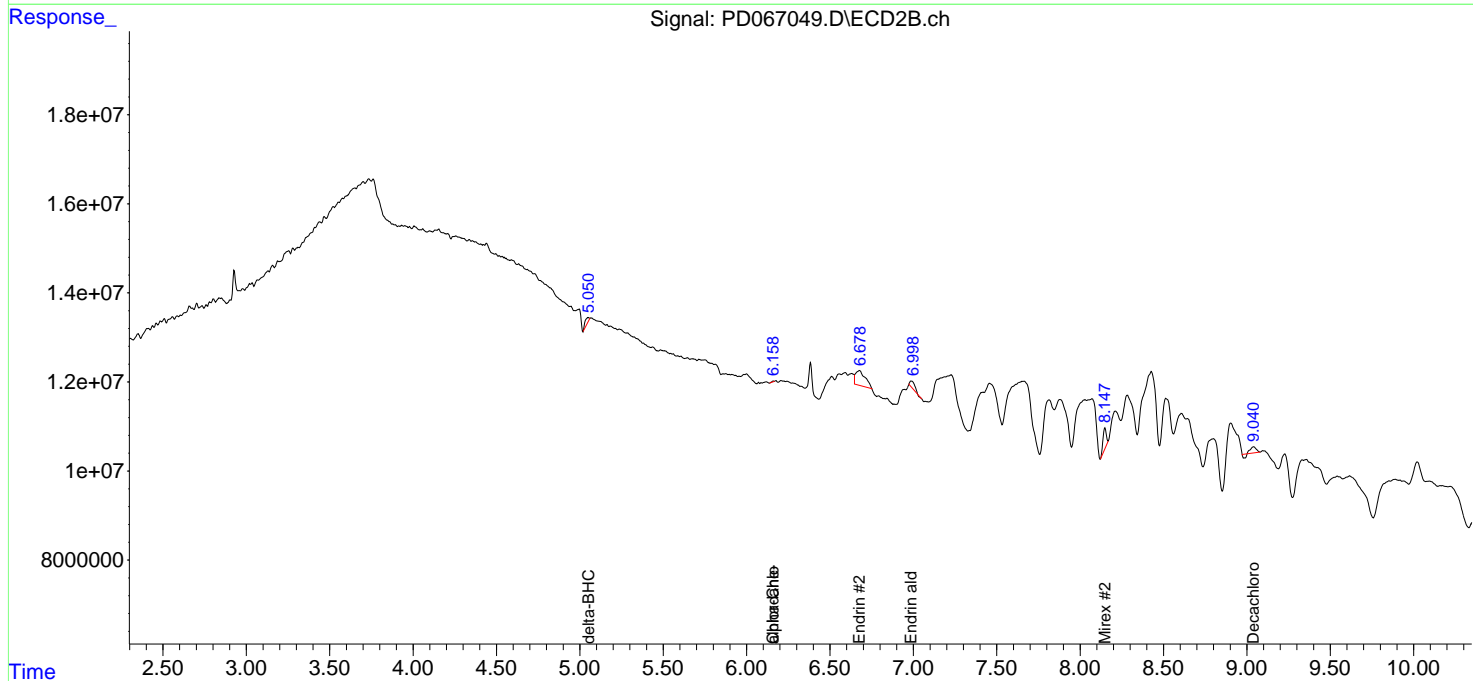
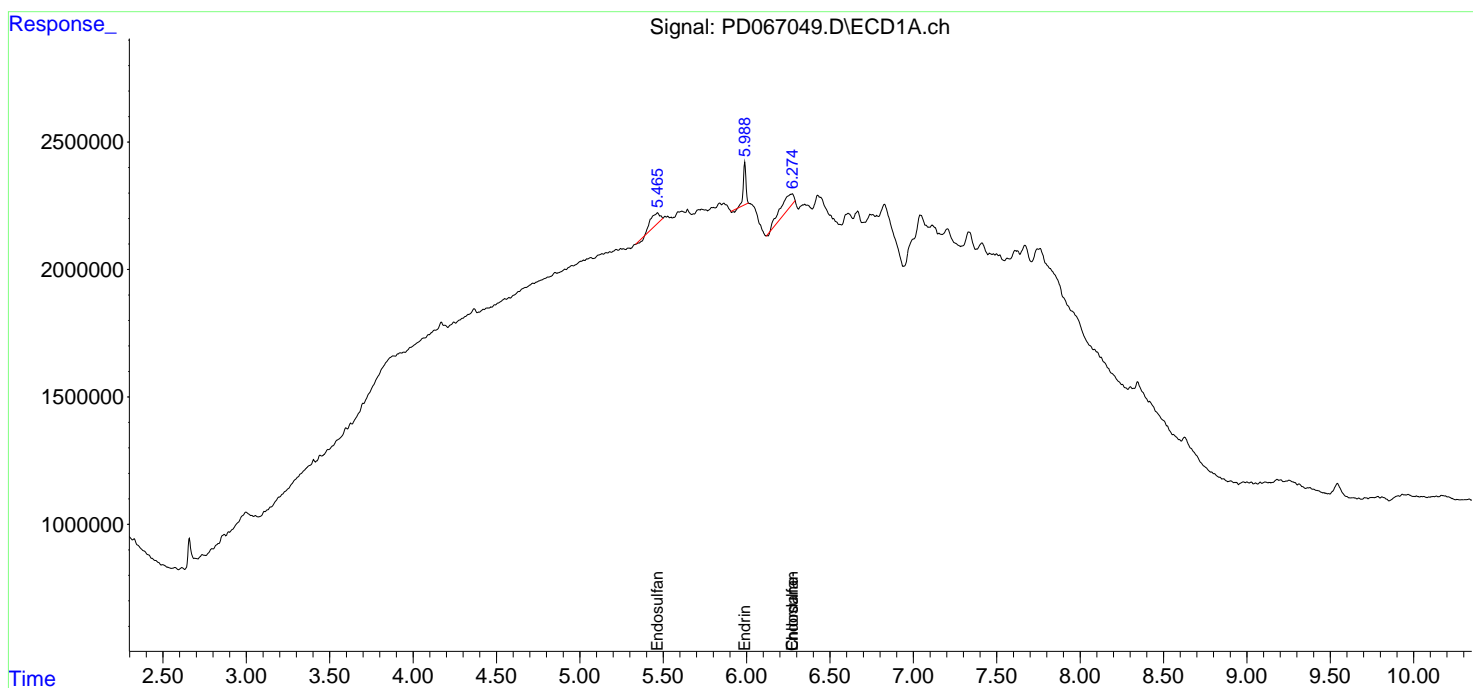
(f)=RT Delta > 1/2 Window (#)=Amounts differ by > 25% (m)=manual int.

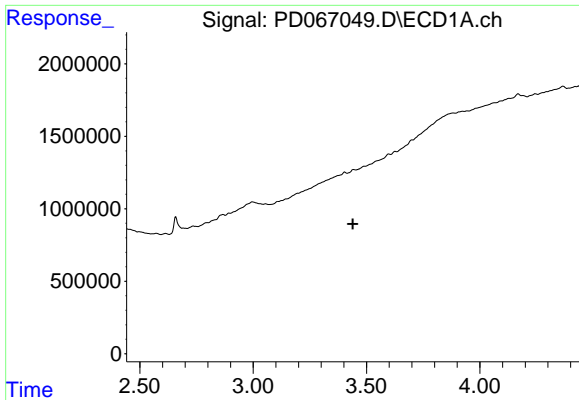
Data Path : Z:\pestpcbsrv\HPCHEM1\ECD_D\Data\PD112221\
 Data File : PD067049.D
 Signal(s) : Signal #1: ECD1A.ch Signal #2: ECD2B.ch
 Acq On : 22 Nov 2021 08:47
 Operator : AR\AJ
 Sample : HEXANE
 Misc :
 ALS Vial : 1 Sample Multiplier: 1

Instrument :
 ECD_D
 ClientSampleId :
 HEXANE

Integration File signal 1: autoint1.e
 Integration File signal 2: autoint2.e
 Quant Time: Nov 23 04:53:27 2021
 Quant Method : Z:\pestpcbsrv\HPCHEM1\ECD_D\Method\PD102821.M
 Quant Title : GC Extractables
 QLast Update : Thu Oct 28 02:17:57 2021
 Response via : Initial Calibration
 Integrator: ChemStation

Volume Inj. : 2 µl
 Signal #1 Phase : ZB-MR2 Signal #2 Phase: ZB-MR1
 Signal #1 Info : 30M x 0.32mm x0.2 Signal #2 Info : 30M x 0.32mm x 0.50µm

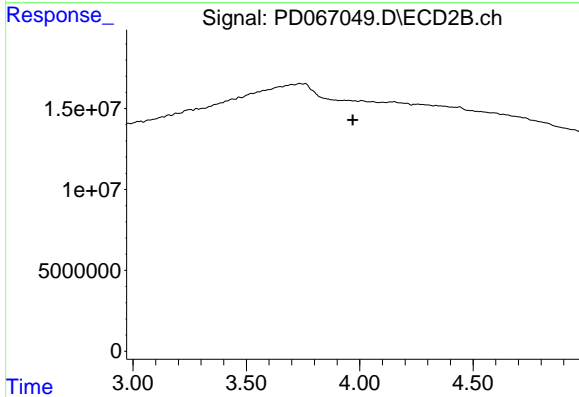




#1 Tetrachloro-m-xylene

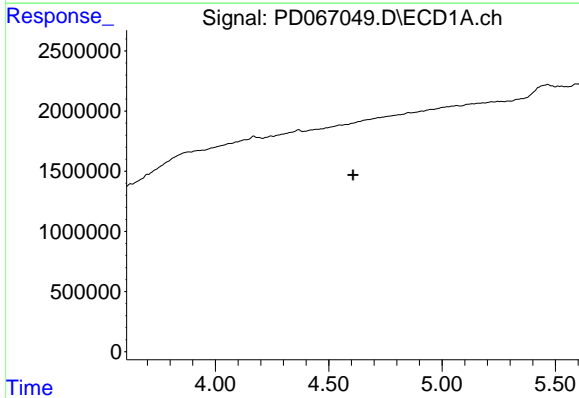
R.T.: 0.000 min
 Exp R.T. : 3.440 min
 Response: 0
 Conc: N.D.

Instrument :
 ECD_D
 ClientSampleId :
 HEXANE



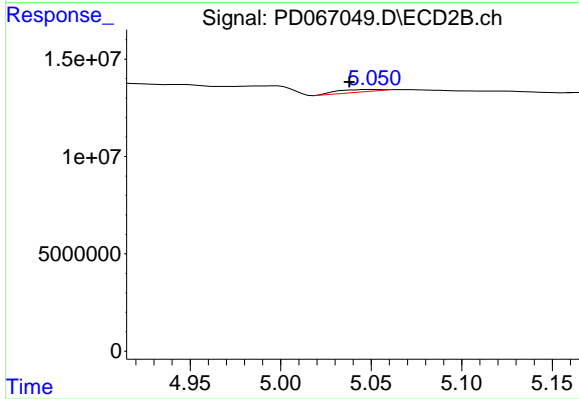
#1 Tetrachloro-m-xylene

R.T.: 0.000 min
 Exp R.T. : 3.970 min
 Response: 0
 Conc: N.D.



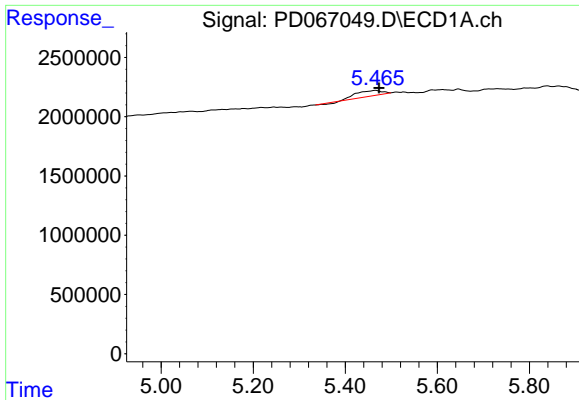
#7 delta-BHC

R.T.: 0.000 min
 Exp R.T. : 4.608 min
 Response: 0
 Conc: N.D.



#7 delta-BHC

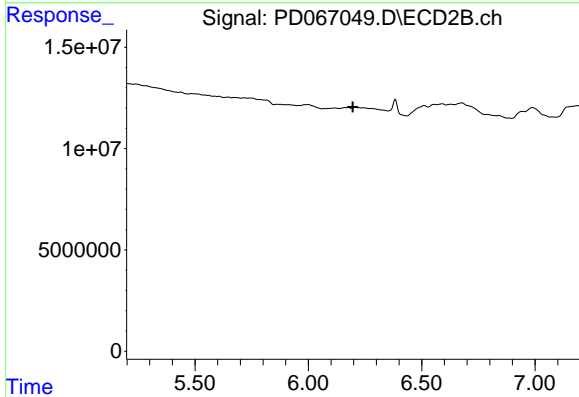
R.T.: 5.050 min
 Delta R.T.: 0.012 min
 Response: 2081102
 Conc: 0.23 ng/ml



#9 Endosulfan I

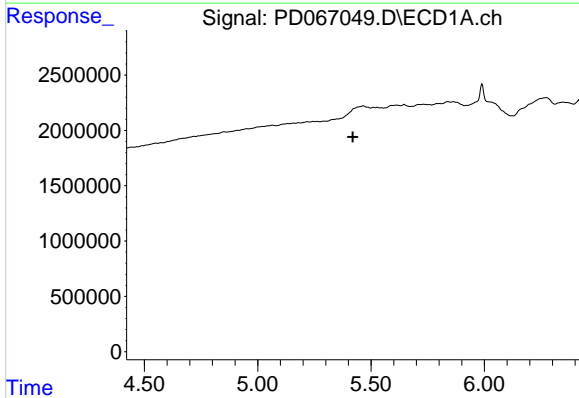
R.T.: 5.466 min
 Delta R.T.: -0.008 min
 Response: 1673667
 Conc: 0.70 ng/ml

Instrument :
 ECD_D
 ClientSampleId :
 HEXANE



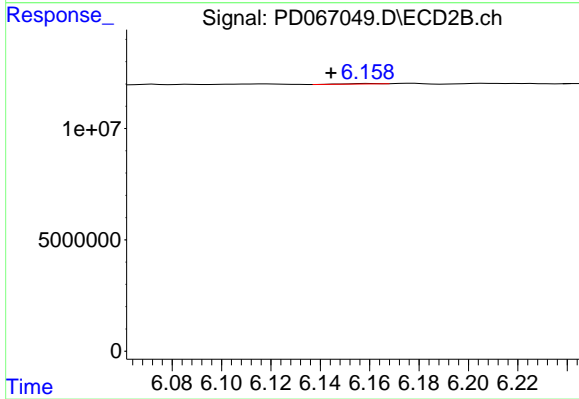
#9 Endosulfan I

R.T.: 0.000 min
 Exp R.T. : 6.196 min
 Response: 0
 Conc: N.D.



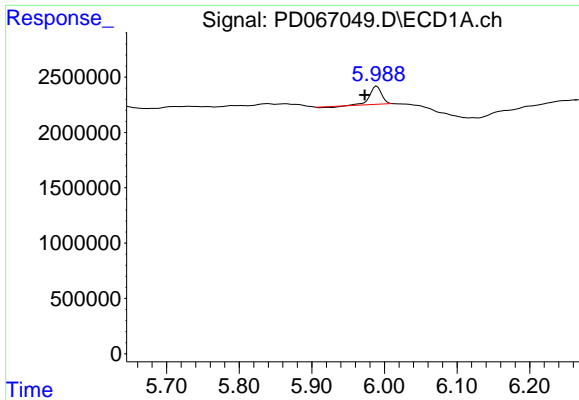
#11 alpha-Chlordane

R.T.: 0.000 min
 Exp R.T. : 5.420 min
 Response: 0
 Conc: N.D.



#11 alpha-Chlordane

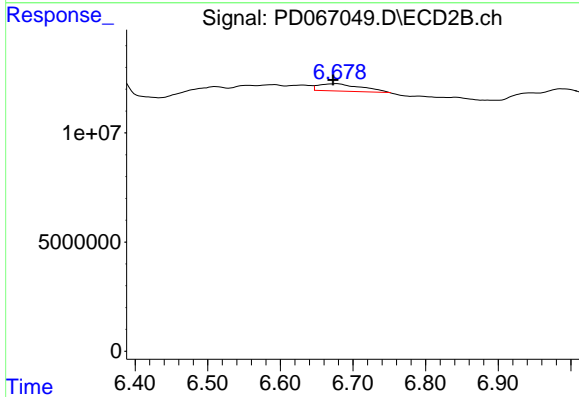
R.T.: 6.161 min
 Delta R.T.: 0.016 min
 Response: 162340
 Conc: 0.02 ng/ml



#14 Endrin

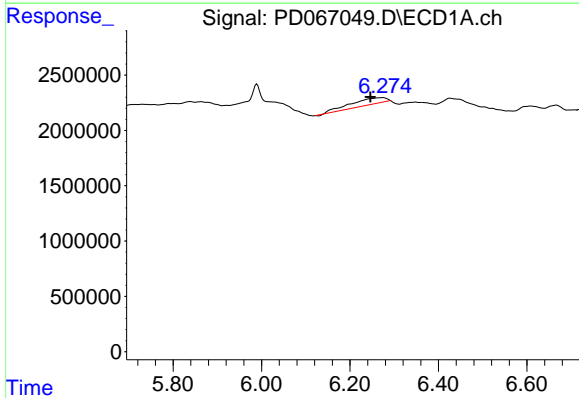
R.T.: 5.990 min
 Delta R.T.: 0.017 min
 Response: 1820358
 Conc: 0.87 ng/ml

Instrument : ECD_D
 ClientSampleId : HEXANE



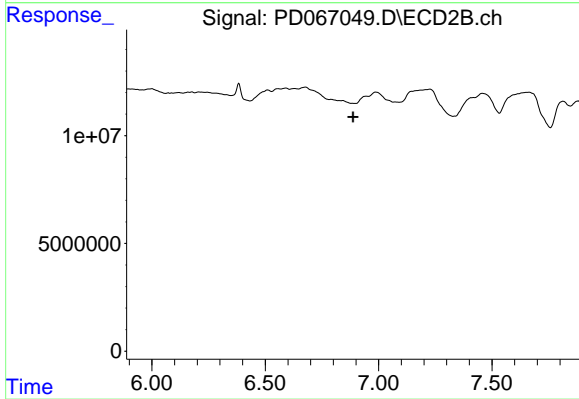
#14 Endrin

R.T.: 6.678 min
 Delta R.T.: 0.005 min
 Response: 13421261
 Conc: 1.95 ng/ml



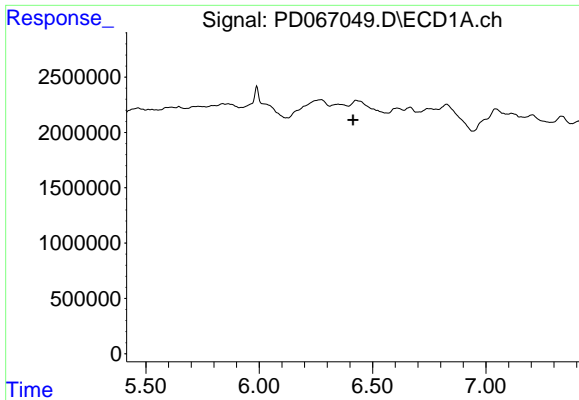
#15 Endosulfan II

R.T.: 6.275 min
 Delta R.T.: 0.029 min
 Response: 3417794
 Conc: 1.72 ng/ml



#15 Endosulfan II

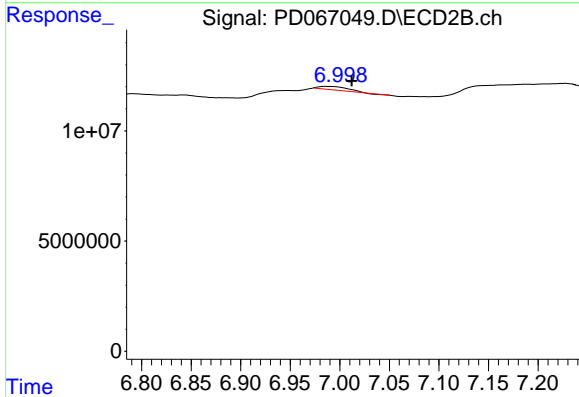
R.T.: 0.000 min
 Exp R.T. : 6.888 min
 Response: 0
 Conc: N.D.



#18 Endrin aldehyde

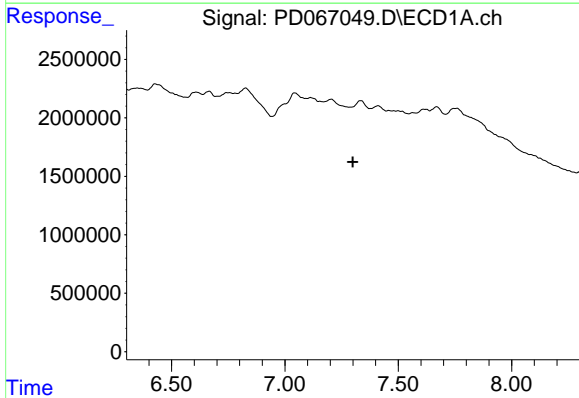
R.T.: 0.000 min
 Exp R.T.: 6.414 min
 Response: 0
 Conc: N.D.

Instrument : ECD_D
 ClientSampleId : HEXANE



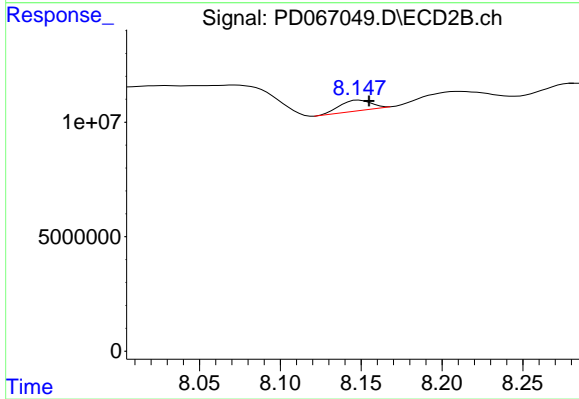
#18 Endrin aldehyde

R.T.: 6.987 min
 Delta R.T.: -0.025 min
 Response: 2616645
 Conc: 0.46 ng/ml



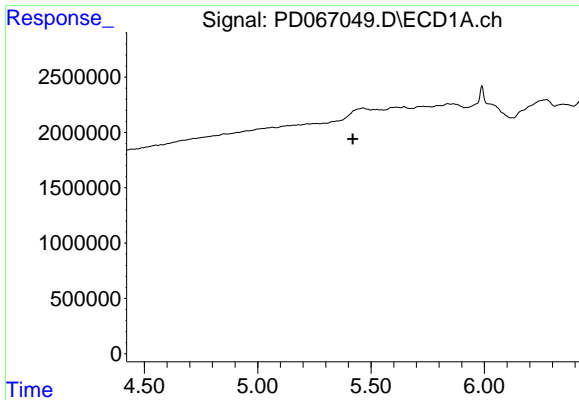
#22 Mirex

R.T.: 0.000 min
 Exp R.T.: 7.299 min
 Response: 0
 Conc: N.D.



#22 Mirex

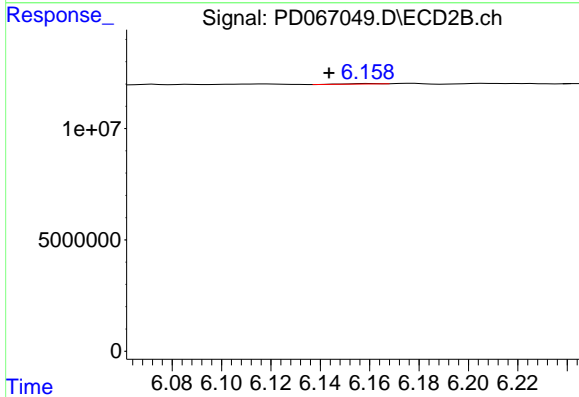
R.T.: 8.149 min
 Delta R.T.: -0.006 min
 Response: 6189759
 Conc: 1.05 ng/ml



#26 Chlordane-4

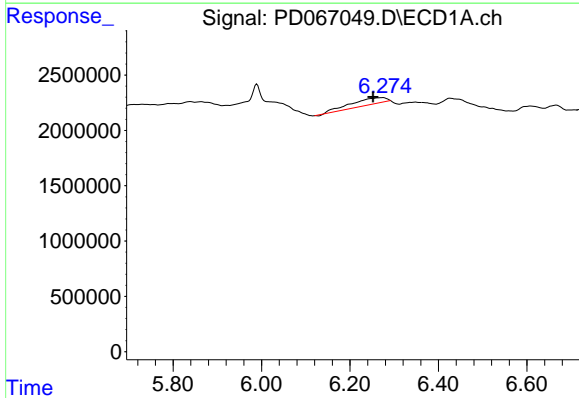
R.T.: 0.000 min
 Exp R.T.: 5.420 min
 Response: 0
 Conc: N.D.

Instrument :
 ECD_D
 ClientSampleId :
 HEXANE



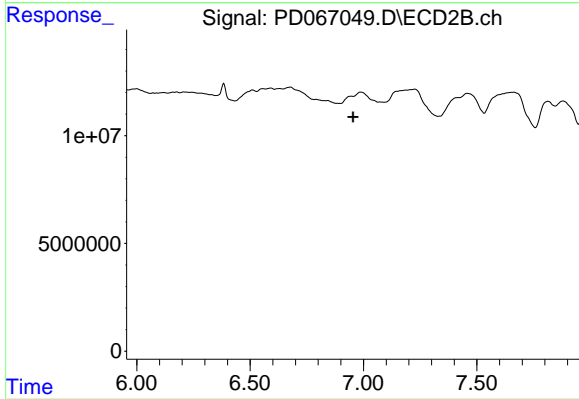
#26 Chlordane-4

R.T.: 6.161 min
 Delta R.T.: 0.017 min
 Response: 162340
 Conc: 0.13 ng/ml



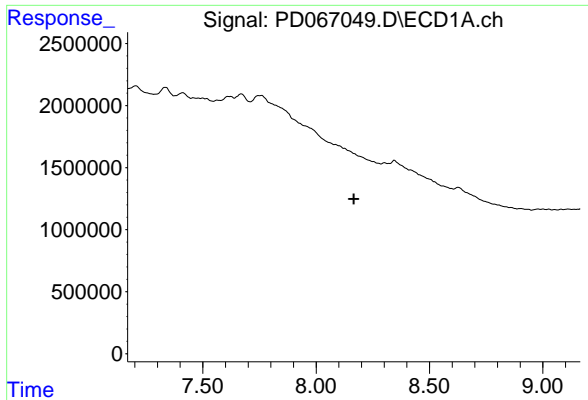
#27 Chlordane-5

R.T.: 6.275 min
 Delta R.T.: 0.022 min
 Response: 3417794
 Conc: 40.41 ng/ml



#27 Chlordane-5

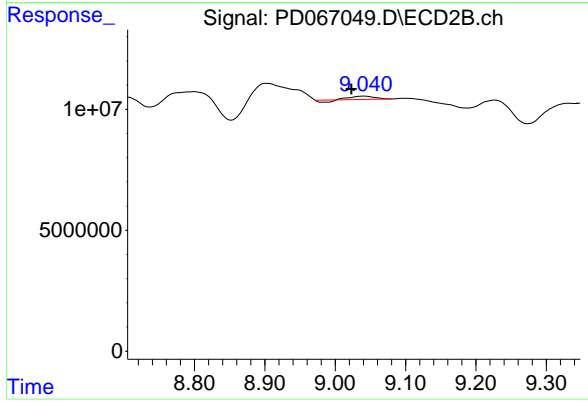
R.T.: 0.000 min
 Exp R.T.: 6.955 min
 Response: 0
 Conc: N.D.



#28 Decachlorobiphenyl

R.T.: 0.000 min
Exp R.T.: 8.166 min
Response: 0
Conc: N.D.

Instrument :
ECD_D
ClientSampleId :
HEXANE



#28 Decachlorobiphenyl

R.T.: 9.041 min
Delta R.T.: 0.018 min
Response: 2261966
Conc: 0.42 ng/ml