

Data Path : Z:\pestpcbsrv\HPCHEM1\ECD_D\Data\PD112221\
 Data File : PD067053.D
 Signal(s) : Signal #1: ECD1A.ch Signal #2: ECD2B.ch
 Acq On : 22 Nov 2021 11:41
 Operator : AR\AJ
 Sample : M4758-23
 Misc :
 ALS Vial : 5 Sample Multiplier: 1

Instrument :
 ECD_D
ClientSampleId :
 TP12

Manual Integrations
APPROVED

Reviewed By :Abdul Mirza 11/23/2021
 Supervised By :Sohil Jodhani 11/23/2021

Integration File signal 1: autoint1.e
 Integration File signal 2: autoint2.e
 Quant Time: Nov 23 04:54:24 2021
 Quant Method : Z:\pestpcbsrv\HPCHEM1\ECD_D\Method\PD102821.M
 Quant Title : GC Extractables
 QLast Update : Thu Oct 28 02:17:57 2021
 Response via : Initial Calibration
 Integrator: ChemStation

Volume Inj. : 2 µl
 Signal #1 Phase : ZB-MR2 Signal #2 Phase: ZB-MR1
 Signal #1 Info : 30M x 0.32mm x0.2 Signal #2 Info : 30M x 0.32mm x 0.50µm

Compound	RT#1	RT#2	Resp#1	Resp#2	ng/ml	ng/ml

System Monitoring Compounds						
1) SA Tetrachlo...	3.442	3.965	39008227	219.6E6	20.907	27.133m#
28) SA Decachlor...	8.171	9.032	16707843	89544961	14.460	16.624

Target Compounds

(f)=RT Delta > 1/2 Window (#)=Amounts differ by > 25% (m)=manual int.

Data Path : Z:\pestpcbsrv\HPCHEM1\ECD_D\Data\PD112221\
 Data File : PD067053.D
 Signal(s) : Signal #1: ECD1A.ch Signal #2: ECD2B.ch
 Acq On : 22 Nov 2021 11:41
 Operator : AR\AJ
 Sample : M4758-23
 Misc :
 ALS Vial : 5 Sample Multiplier: 1

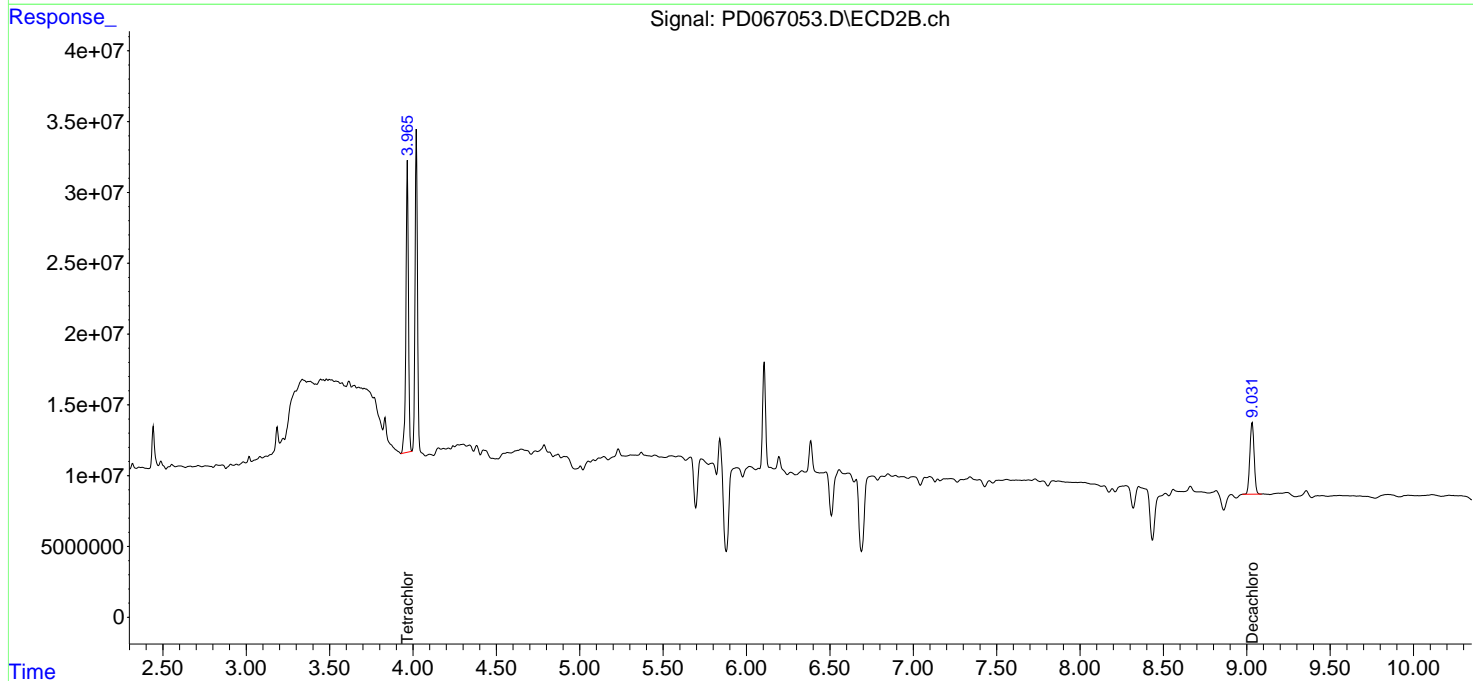
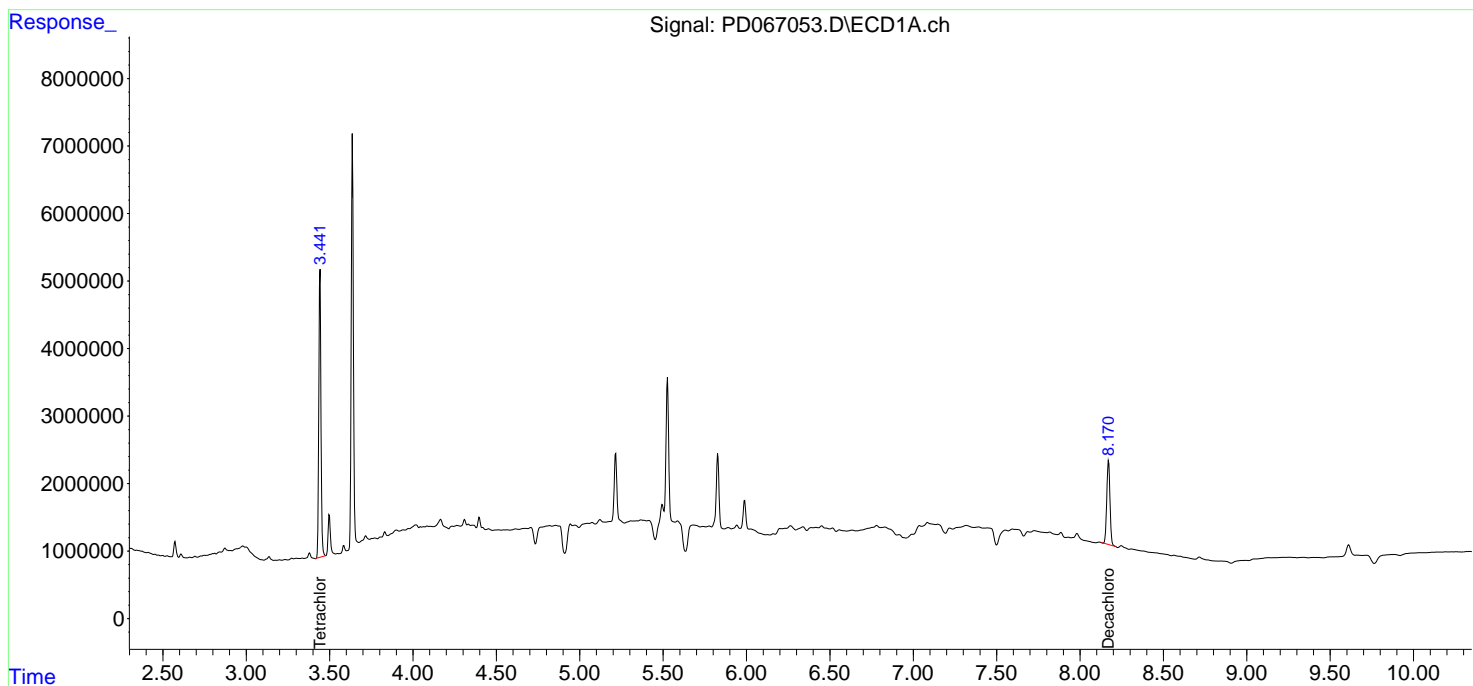
Instrument :
 ECD_D
 ClientSampleId :
 TP12

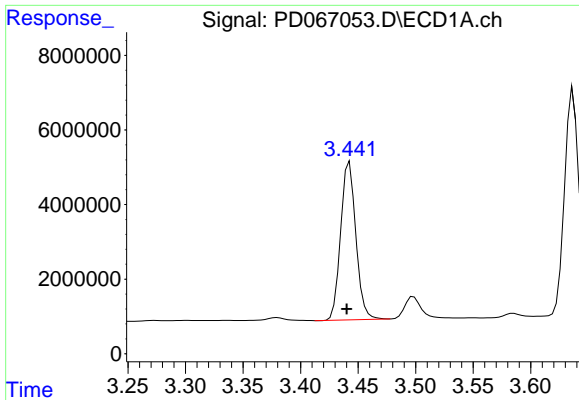
Manual Integrations
APPROVED

Reviewed By :Abdul Mirza 11/23/2021
 Supervised By :Sohil Jodhani 11/23/2021

Integration File signal 1: autoint1.e
 Integration File signal 2: autoint2.e
 Quant Time: Nov 23 04:54:24 2021
 Quant Method : Z:\pestpcbsrv\HPCHEM1\ECD_D\Method\PD102821.M
 Quant Title : GC Extractables
 QLast Update : Thu Oct 28 02:17:57 2021
 Response via : Initial Calibration
 Integrator: ChemStation

Volume Inj. : 2 µl
 Signal #1 Phase : ZB-MR2 Signal #2 Phase: ZB-MR1
 Signal #1 Info : 30M x 0.32mm x0.2 Signal #2 Info : 30M x 0.32mm x 0.50µm

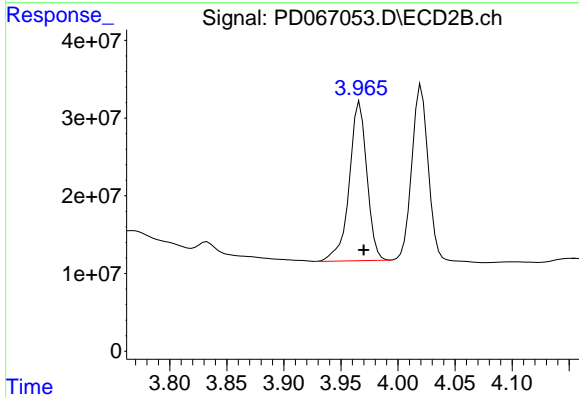




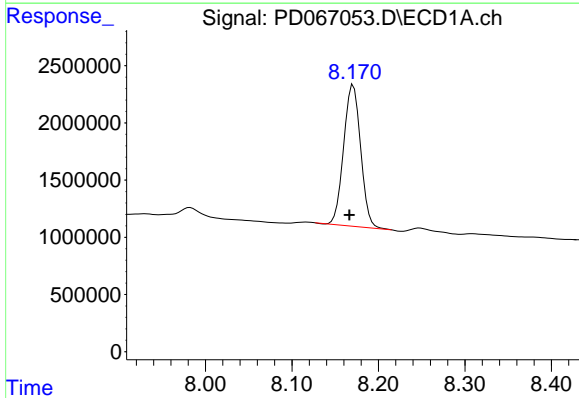
#1 Tetrachloro-m-xylene
 R.T.: 3.442 min
 Delta R.T.: 0.002 min
 Response: 39008227
 Conc: 20.91 ng/ml

Instrument : ECD_D
 Client SampleId : TP12

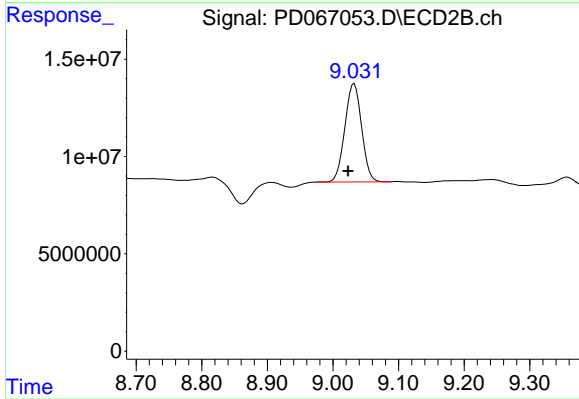
Manual Integrations
APPROVED
 Reviewed By :Abdul Mirza 11/23/2021
 Supervised By :Sohil Jodhani 11/23/2021



#1 Tetrachloro-m-xylene
 R.T.: 3.965 min
 Delta R.T.: -0.005 min
 Response: 219568332
 Conc: 27.13 ng/ml m



#28 Decachlorobiphenyl
 R.T.: 8.171 min
 Delta R.T.: 0.005 min
 Response: 16707843
 Conc: 14.46 ng/ml



#28 Decachlorobiphenyl
 R.T.: 9.032 min
 Delta R.T.: 0.009 min
 Response: 89544961
 Conc: 16.62 ng/ml