

Data Path : Z:\pestpcbsrv\HPCHEM1\ECD\_D\Data\PD121921\  
 Data File : PD067444.D  
 Signal(s) : Signal #1: ECD1A.ch Signal #2: ECD2B.ch  
 Acq On : 18 Dec 2021 16:33  
 Operator : AR\AJ  
 Sample : PIBLK186  
 Misc :  
 ALS Vial : 19 Sample Multiplier: 1

Instrument :  
 ECD\_D  
 ClientSampleId :

Integration File signal 1: autoint1.e  
 Integration File signal 2: autoint2.e  
 Quant Time: Dec 20 00:52:50 2021  
 Quant Method : Z:\pestpcbsrv\HPCHEM1\ECD\_D\Method\PD121821CLP.M  
 Quant Title : GC Extractables  
 QLast Update : Sat Dec 18 01:09:55 2021  
 Response via : Initial Calibration  
 Integrator: ChemStation

Volume Inj. : 1 µl  
 Signal #1 Phase : ZB-MR2 Signal #2 Phase: ZB-MR1  
 Signal #1 Info : 30M x 0.32mm x0.2 Signal #2 Info : 30M x 0.32mm x 0.50µm

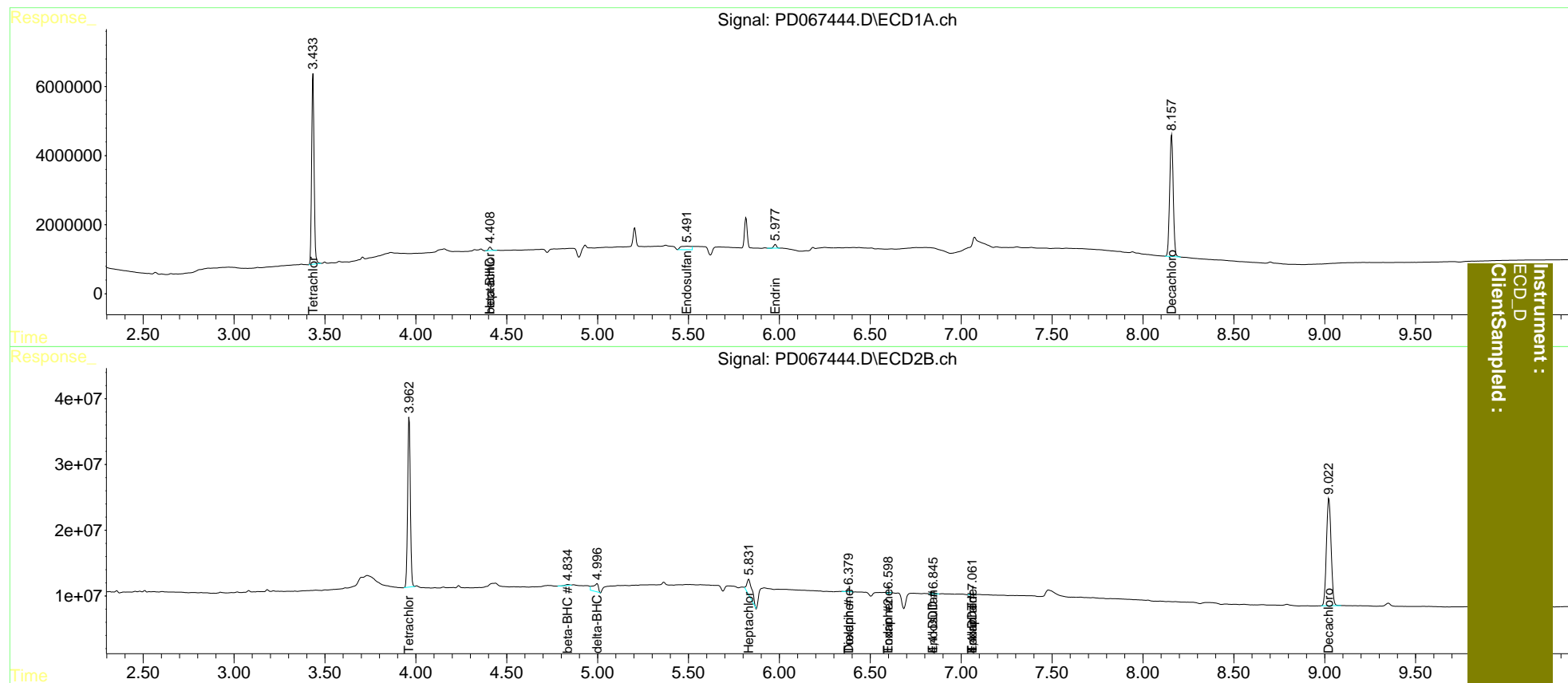
Compound	RT#1	RT#2	Resp#1	Resp#2	ng/ml	ng/ml
-----						
System Monitoring Compounds						
1) SA Tetrachlo...	3.434	3.964	51552944	266.0E6	24.633	25.255
2) SA Decachlor...	8.158	9.023	47616623	291.1E6	48.335	50.376
Target Compounds						
4) MA Heptachlor	4.409f	0.000	1112919	0	0.358	N.D. #
6) B beta-BHC	4.409	4.836	1112919	2050176	0.816	0.375 #
7) B delta-BHC	0.000	4.997f	0	25982921	N.D.	2.601
8) B Heptachlo...	0.000	5.832	0	51191299	N.D.	7.991
9) A Endosulfan I	5.493	0.000	4004947	0	1.570	N.D. #
13) MA Dieldrin	0.000	6.381f	0	5657790	N.D.	0.724
14) MA Endrin	5.978	6.601f	1135863	1544187	0.475	0.232 #
15) B Endosulfa...	6.185f	6.847f	-430337	1960201	N.D.	0.295
16) A 4,4'-DDD	0.000	6.847f	0	1960201	N.D.	0.324
17) MA 4,4'-DDT	0.000	7.062	0	755357	N.D.	0.126
18) B Endrin al...	0.000	7.062f	0	755357	N.D.	0.148
22) Toxaphene-1	0.000	6.381	0	5657790	N.D.	157.653
23) Toxaphene-2	6.185	6.601	-430337	1544187	N.D.	42.284
24) Toxaphene-3	0.000	7.062	0	755357	N.D.	7.759
-----						

(f)=RT Delta > 1/2 Window (#)=Amounts differ by > 25% (m)=manual int.

Data Path : Z:\pestpcbsrv\HPCHEM1\ECD\_D\Data\PD121921\  
 Data File : PD067444.D  
 Signal(s) : Signal #1: ECD1A.ch Signal #2: ECD2B.ch  
 Acq On : 18 Dec 2021 16:33  
 Operator : AR\AJ  
 Sample : PIBLK186  
 Misc :  
 ALS Vial : 19 Sample Multiplier: 1

Integration File signal 1: autoint1.e  
 Integration File signal 2: autoint2.e  
 Quant Time: Dec 20 00:52:50 2021  
 Quant Method : Z:\pestpcbsrv\HPCHEM1\ECD\_D\Method\PD121821CLP.M  
 Quant Title : GC Extractables  
 QLast Update : Sat Dec 18 01:09:55 2021  
 Response via : Initial Calibration  
 Integrator: ChemStation

Volume Inj. : 1 µl  
 Signal #1 Phase : ZB-MR2 Signal #2 Phase: ZB-MR1  
 Signal #1 Info : 30M x 0.32mm x0.2 Signal #2 Info : 30M x 0.32mm x 0.50µm



Instrument : ECD\_D  
 Client Sampled :