

Data Path : Z:\pestpcbsrv\HPCHEM1\ECD\_D\Data\PD122321\  
 Data File : PD067497.D  
 Signal(s) : Signal #1: ECD1A.ch Signal #2: ECD2B.ch  
 Acq On : 23 Dec 2021 10:43  
 Operator : AR\AJ  
 Sample : M5152-06MSD  
 Misc :  
 ALS Vial : 5 Sample Multiplier: 1

Instrument :  
 ECD\_D  
 ClientSampleId :

Integration File signal 1: autoint1.e  
 Integration File signal 2: autoint2.e  
 Quant Time: Dec 24 00:27:34 2021  
 Quant Method : Z:\pestpcbsrv\HPCHEM1\ECD\_D\Method\PD121821CLP.M  
 Quant Title : GC Extractables  
 QLast Update : Sat Dec 18 01:09:55 2021  
 Response via : Initial Calibration  
 Integrator: ChemStation

Volume Inj. : 1 µl  
 Signal #1 Phase : ZB-MR2 Signal #2 Phase: ZB-MR1  
 Signal #1 Info : 30M x 0.32mm x0.2 Signal #2 Info : 30M x 0.32mm x 0.50µm

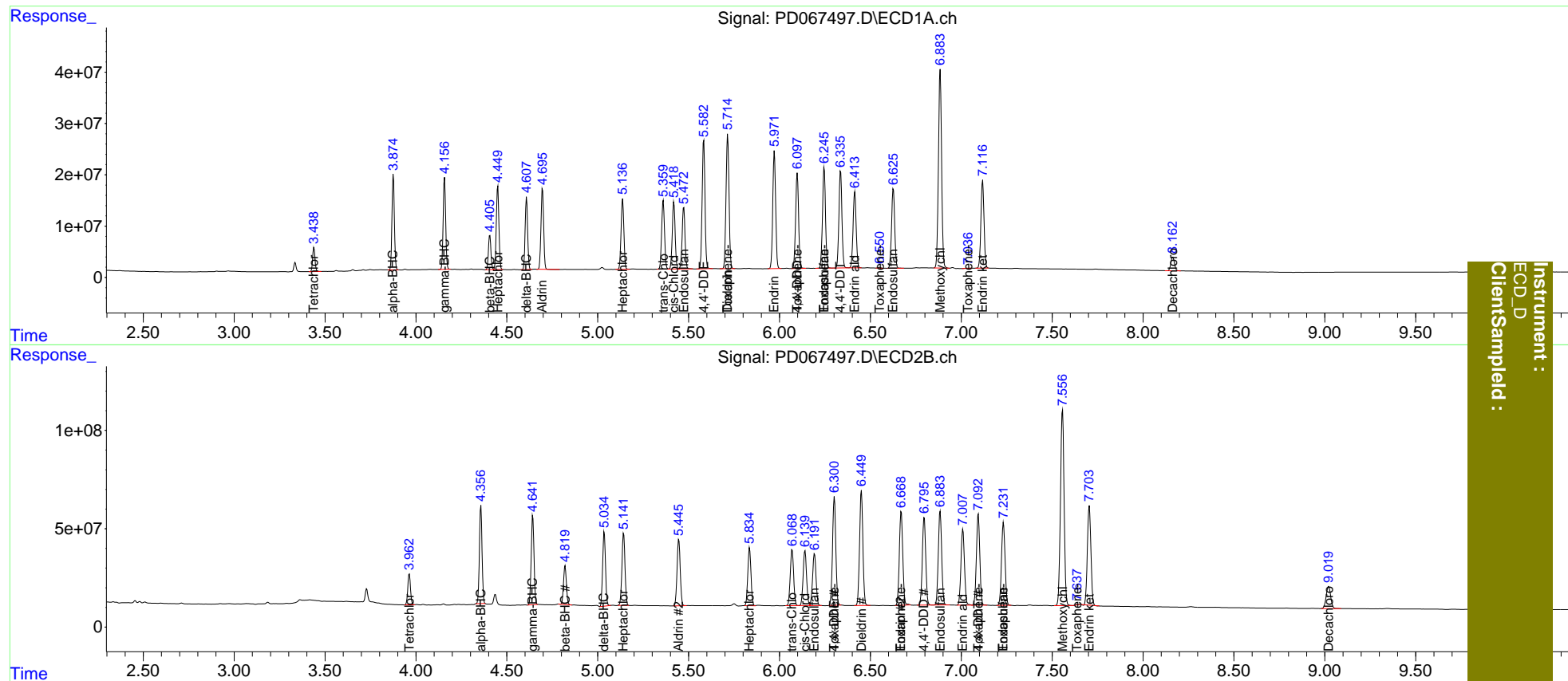
	Compound	RT#1	RT#2	Resp#1	Resp#2	ng/ml	ng/ml
-----							
System Monitoring Compounds							
1)	SA Tetrachlo...	3.439	3.964	42598053	162.8E6	20.354	15.461
27)	SA Decachlor...	8.164	9.021	36424704	195.7E6	36.975	33.862
Target Compounds							
2)	A alpha-BHC	3.876	4.357	170.1E6	505.8E6	54.097	37.256 #
3)	MA gamma-BHC...	4.158	4.643	169.9E6	481.0E6	56.208	40.169 #
4)	MA Heptachlor	4.450	5.143	162.3E6	429.6E6	52.204	41.402
5)	MB Aldrin	4.696	5.446	160.5E6	411.6E6	52.014	43.644
6)	B beta-BHC	4.407	4.821	64178050	214.2E6	47.078	39.173
7)	B delta-BHC	4.609	5.036	133.8E6	408.6E6	46.796	40.910
8)	Heptachlo...	5.137	5.835	146.4E6	357.5E6	52.966	55.807
9)	A Endosulfan I	5.473	6.193	132.0E6	346.2E6	51.763	44.991
10)	B trans-Chl...	5.361	6.070	147.3E6	365.5E6	51.438	44.547
11)	B cis-Chlor...	5.419	6.140	142.8E6	363.3E6	51.288	45.196
12)	B 4,4'-DDE	5.583	6.302	273.6E6	685.0E6	109.898	96.061
13)	MA Dieldrin	5.715	6.451	298.1E6	737.6E6	107.429	94.380
14)	MA Endrin	5.972	6.670	253.9E6	630.3E6	106.238	94.593
15)	B Endosulfa...	6.246	6.884	225.5E6	617.3E6	102.089	93.016
16)	A 4,4'-DDD	6.098	6.796	211.5E6	577.9E6	107.404	95.406
17)	MA 4,4'-DDT	6.336	7.094	218.5E6	600.2E6	106.393	99.772
18)	B Endrin al...	6.415	7.009	174.6E6	517.7E6	107.756	101.168
19)	B Endosulfa...	6.626	7.232	186.0E6	572.1E6	99.473	93.782
20)	A Methoxychlor	6.884	7.557	466.0E6	1384.7E6	494.870	465.869
21)	B Endrin ke...	7.118	7.705	203.1E6	680.7E6	103.383	95.765
22)	Toxaphene-1	5.715	6.302	298.1E6	685.0E6	18412.533	19086.589
23)	Toxaphene-2	6.098	6.670	211.5E6	630.3E6	13029.204	17259.356 #
24)	Toxaphene-3	6.246	7.094	225.5E6	600.2E6	6040.520	6165.614
25)	Toxaphene-4	6.552	7.232	1848070	572.1E6	48.796	5802.728 #
26)	Toxaphene-5	7.038	7.639	612528	2437347	16.484	31.401 #

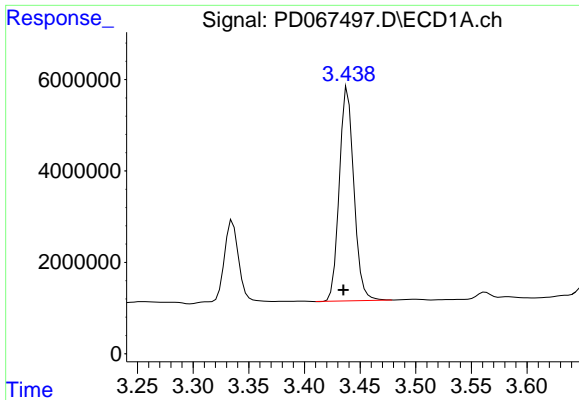
(f)=RT Delta > 1/2 Window (#)=Amounts differ by > 25% (m)=manual int.

Data Path : Z:\pestpcbsrv\HPCHEM1\ECD\_D\Data\PD122321\  
 Data File : PD067497.D  
 Signal(s) : Signal #1: ECD1A.ch Signal #2: ECD2B.ch  
 Acq On : 23 Dec 2021 10:43  
 Operator : AR\AJ  
 Sample : M5152-06MSD  
 Misc :  
 ALS Vial : 5 Sample Multiplier: 1

Integration File signal 1: autoint1.e  
 Integration File signal 2: autoint2.e  
 Quant Time: Dec 24 00:27:34 2021  
 Quant Method : Z:\pestpcbsrv\HPCHEM1\ECD\_D\Method\PD121821CLP.M  
 Quant Title : GC Extractables  
 QLast Update : Sat Dec 18 01:09:55 2021  
 Response via : Initial Calibration  
 Integrator: ChemStation

Volume Inj. : 1 µl  
 Signal #1 Phase : ZB-MR2 Signal #2 Phase: ZB-MR1  
 Signal #1 Info : 30M x 0.32mm x0.2 Signal #2 Info : 30M x 0.32mm x 0.50µm

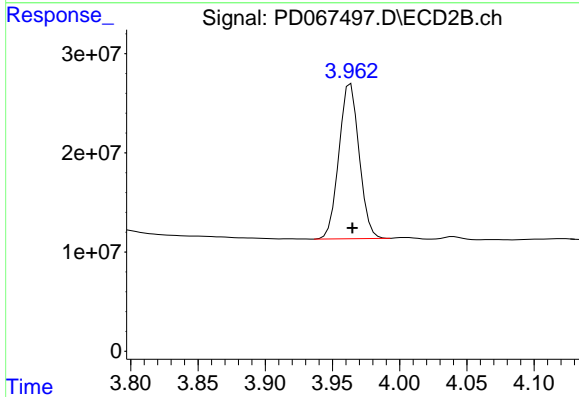




#1 Tetrachloro-m-xylene

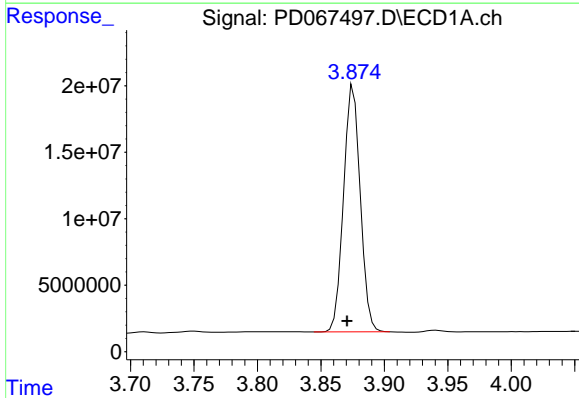
R.T.: 3.439 min  
 Delta R.T.: 0.004 min  
 Response: 42598053  
 Conc: 20.35 ng/ml

Instrument :  
 ECD\_D  
 ClientSampleId :



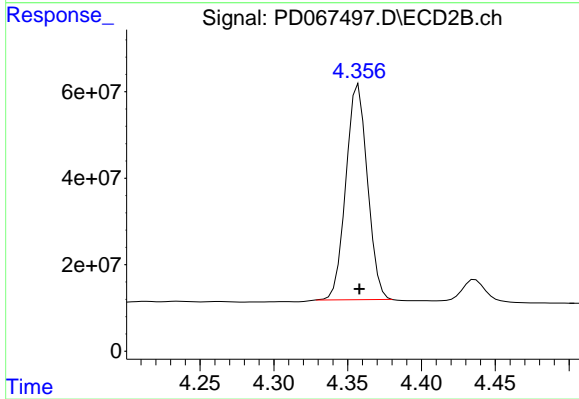
#1 Tetrachloro-m-xylene

R.T.: 3.964 min  
 Delta R.T.: -0.001 min  
 Response: 162842364  
 Conc: 15.46 ng/ml



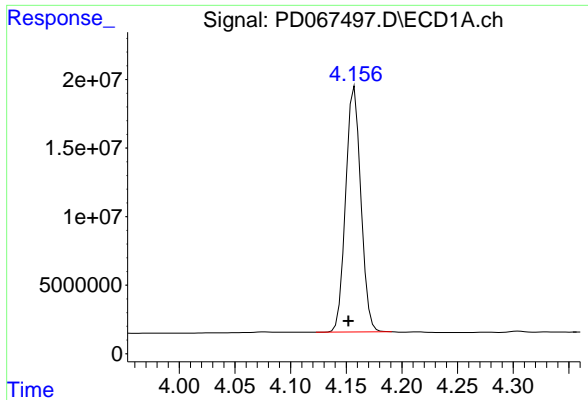
#2 alpha-BHC

R.T.: 3.876 min  
 Delta R.T.: 0.005 min  
 Response: 170065636  
 Conc: 54.10 ng/ml



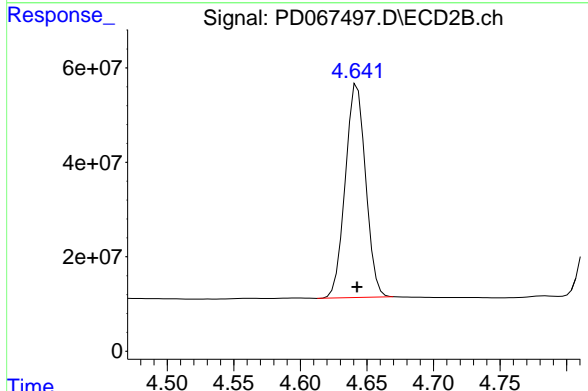
#2 alpha-BHC

R.T.: 4.357 min  
 Delta R.T.: 0.000 min  
 Response: 505811636  
 Conc: 37.26 ng/ml

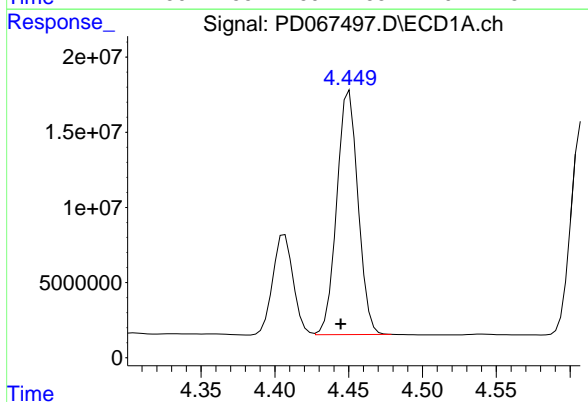


#3 gamma-BHC (Lindane)  
 R.T.: 4.158 min  
 Delta R.T.: 0.006 min  
 Response: 169907435  
 Conc: 56.21 ng/ml

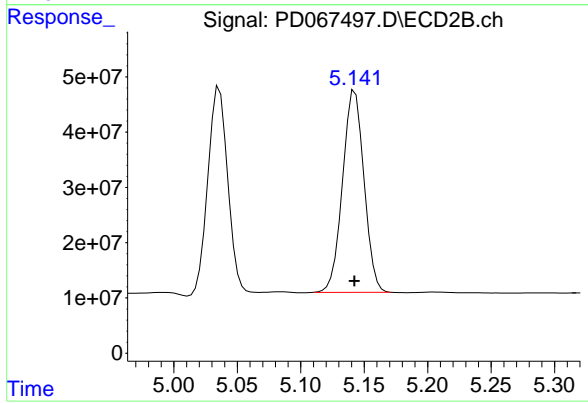
Instrument :  
 ECD\_D  
 ClientSampleId :



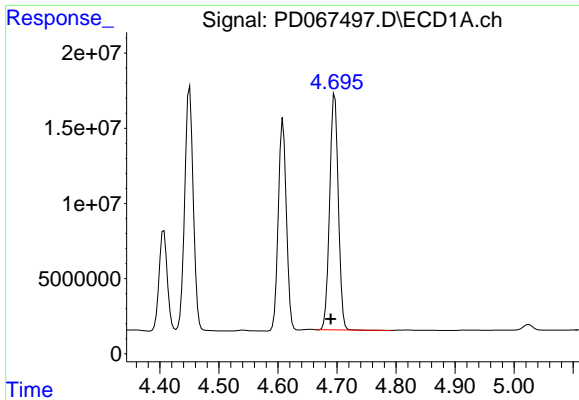
#3 gamma-BHC (Lindane)  
 R.T.: 4.643 min  
 Delta R.T.: 0.000 min  
 Response: 481003382  
 Conc: 40.17 ng/ml



#4 Heptachlor  
 R.T.: 4.450 min  
 Delta R.T.: 0.006 min  
 Response: 162304643  
 Conc: 52.20 ng/ml

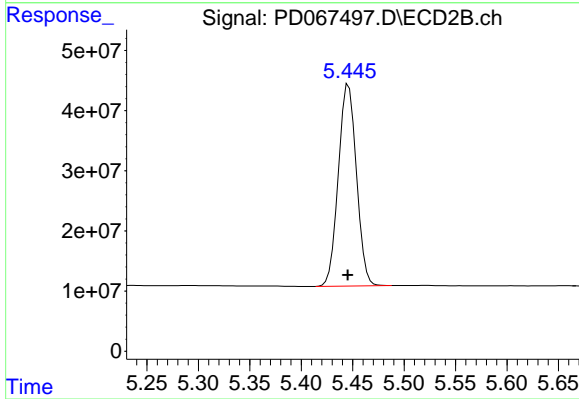


#4 Heptachlor  
 R.T.: 5.143 min  
 Delta R.T.: 0.000 min  
 Response: 429580097  
 Conc: 41.40 ng/ml

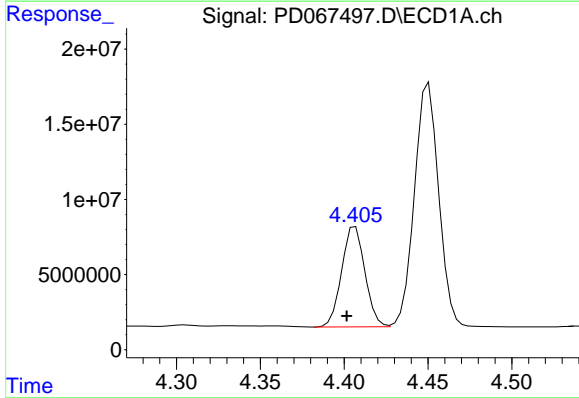


#5 Aldrin  
 R.T.: 4.696 min  
 Delta R.T.: 0.007 min  
 Response: 160459048  
 Conc: 52.01 ng/ml

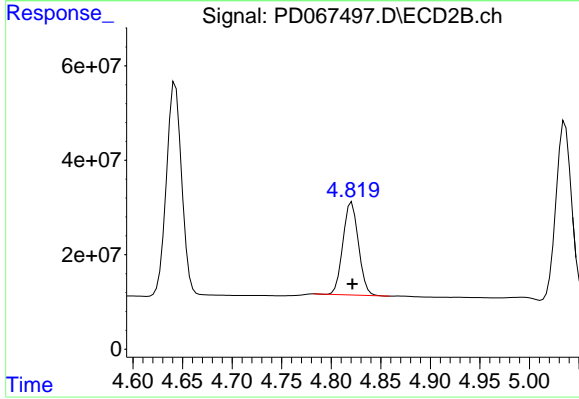
Instrument :  
 ECD\_D  
 ClientSampleId :



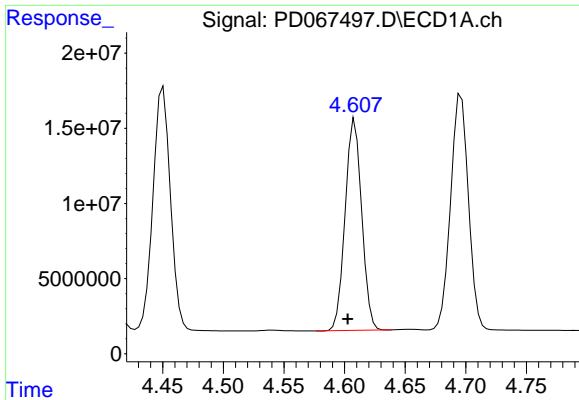
#5 Aldrin  
 R.T.: 5.446 min  
 Delta R.T.: 0.000 min  
 Response: 411616444  
 Conc: 43.64 ng/ml



#6 beta-BHC  
 R.T.: 4.407 min  
 Delta R.T.: 0.005 min  
 Response: 64178050  
 Conc: 47.08 ng/ml



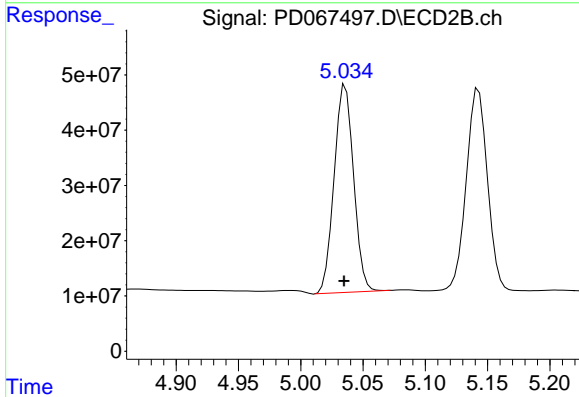
#6 beta-BHC  
 R.T.: 4.821 min  
 Delta R.T.: 0.000 min  
 Response: 214229381  
 Conc: 39.17 ng/ml



#7 delta-BHC

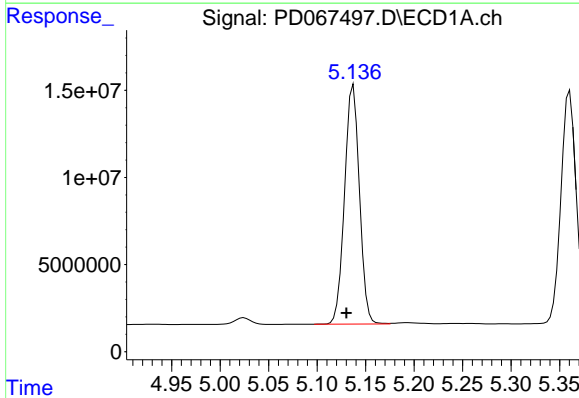
R.T.: 4.609 min  
 Delta R.T.: 0.006 min  
 Response: 133808471  
 Conc: 46.80 ng/ml

Instrument :  
 ECD\_D  
 ClientSampleId :



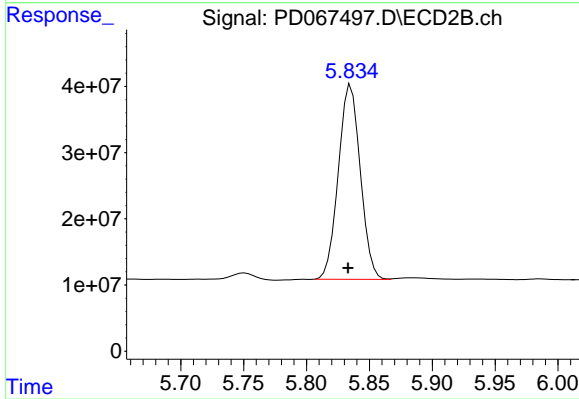
#7 delta-BHC

R.T.: 5.036 min  
 Delta R.T.: 0.001 min  
 Response: 408623663  
 Conc: 40.91 ng/ml



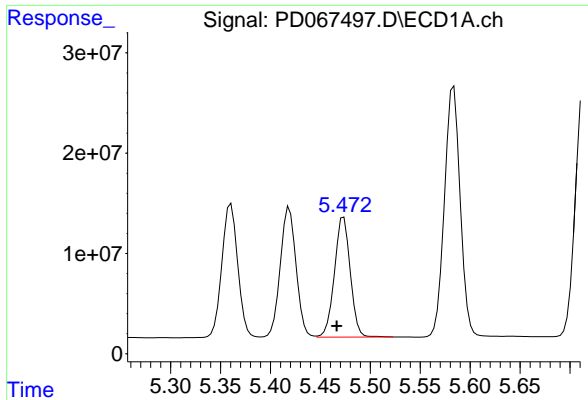
#8 Heptachlor epoxide

R.T.: 5.137 min  
 Delta R.T.: 0.007 min  
 Response: 146386873  
 Conc: 52.97 ng/ml



#8 Heptachlor epoxide

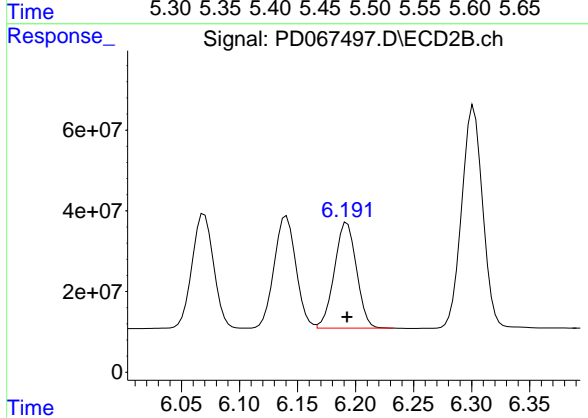
R.T.: 5.835 min  
 Delta R.T.: 0.002 min  
 Response: 357511048  
 Conc: 55.81 ng/ml



#9 Endosulfan I

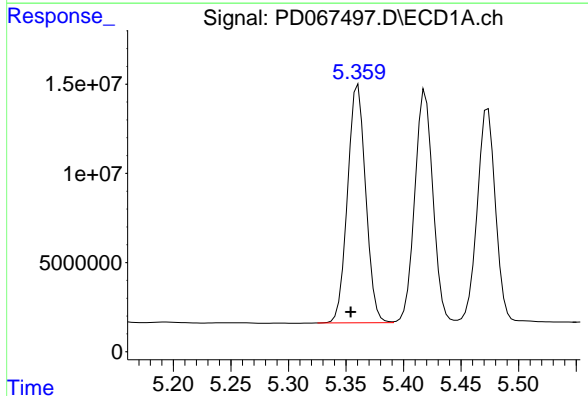
R.T.: 5.473 min  
 Delta R.T.: 0.007 min  
 Response: 132001539  
 Conc: 51.76 ng/ml

Instrument :  
 ECD\_D  
 ClientSampleId :



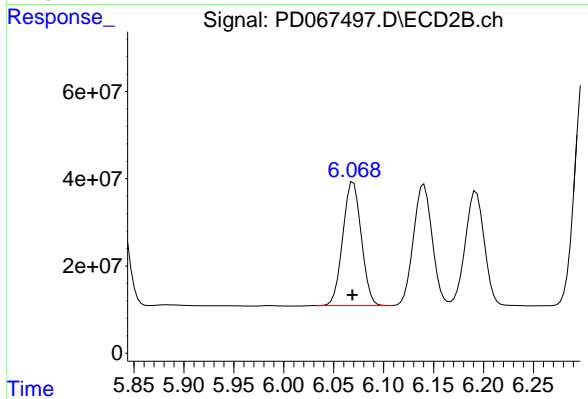
#9 Endosulfan I

R.T.: 6.193 min  
 Delta R.T.: 0.000 min  
 Response: 346237308  
 Conc: 44.99 ng/ml



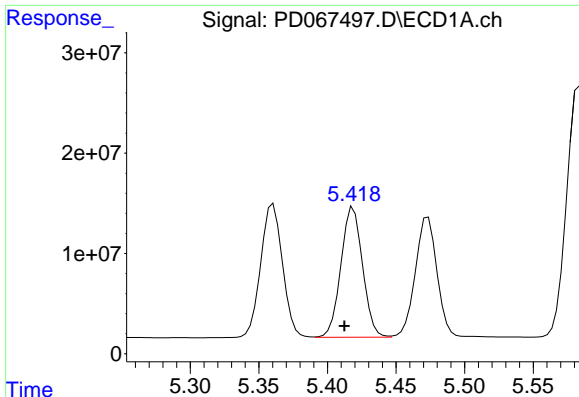
#10 trans-Chlordane

R.T.: 5.361 min  
 Delta R.T.: 0.006 min  
 Response: 147319475  
 Conc: 51.44 ng/ml



#10 trans-Chlordane

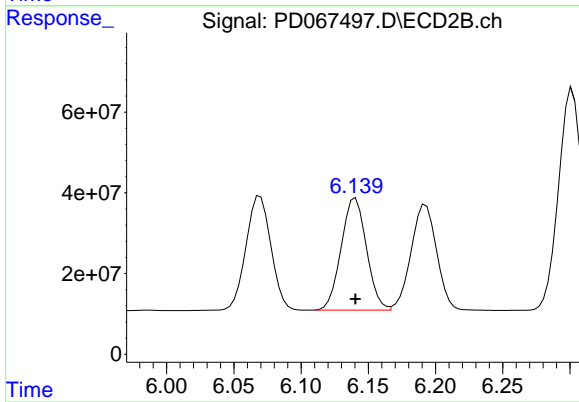
R.T.: 6.070 min  
 Delta R.T.: 0.000 min  
 Response: 365495696  
 Conc: 44.55 ng/ml



#11 cis-Chlordane

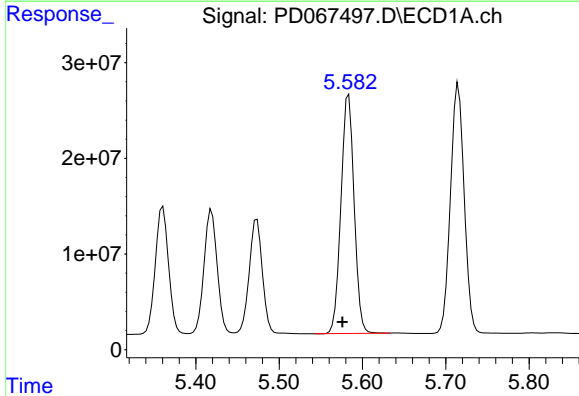
R.T.: 5.419 min  
 Delta R.T.: 0.007 min  
 Response: 142829165  
 Conc: 51.29 ng/ml

Instrument :  
 ECD\_D  
 ClientSampleId :



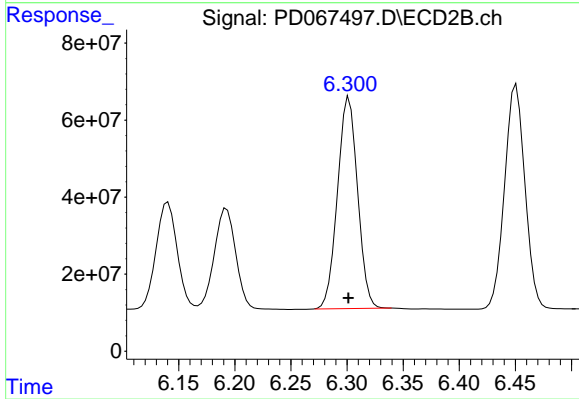
#11 cis-Chlordane

R.T.: 6.140 min  
 Delta R.T.: 0.000 min  
 Response: 363278530  
 Conc: 45.20 ng/ml



#12 4,4'-DDE

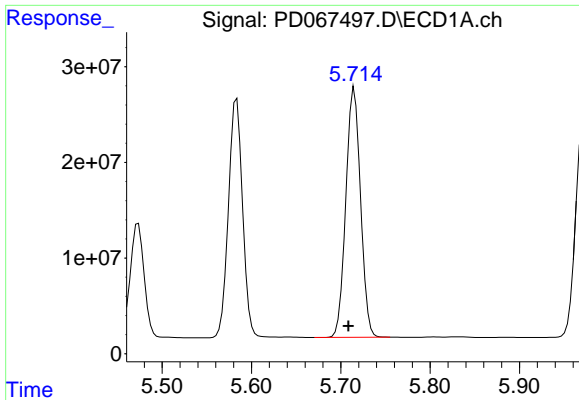
R.T.: 5.583 min  
 Delta R.T.: 0.008 min  
 Response: 273627644  
 Conc: 109.90 ng/ml



#12 4,4'-DDE

R.T.: 6.302 min  
 Delta R.T.: 0.000 min  
 Response: 684970450  
 Conc: 96.06 ng/ml

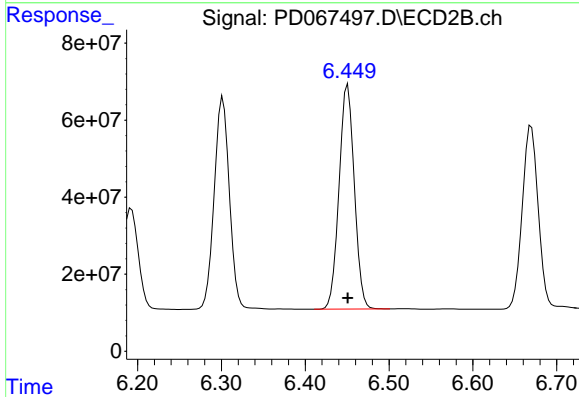




#13 Dieldrin

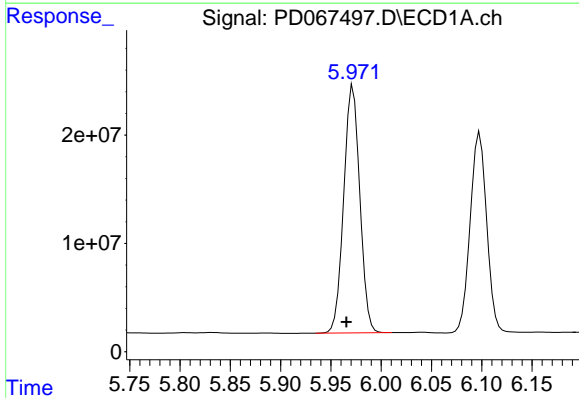
R.T.: 5.715 min  
 Delta R.T.: 0.007 min  
 Response: 298135931  
 Conc: 107.43 ng/ml

Instrument :  
 ECD\_D  
 ClientSampleId :



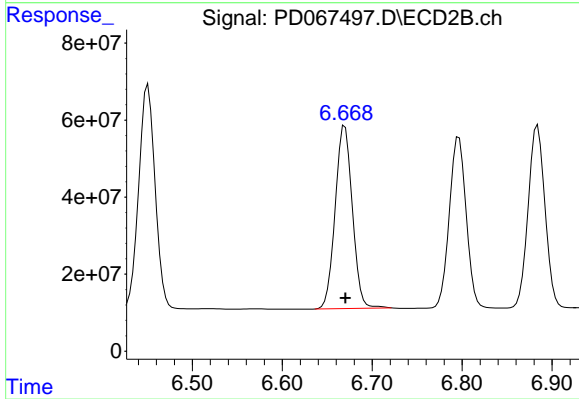
#13 Dieldrin

R.T.: 6.451 min  
 Delta R.T.: 0.000 min  
 Response: 737579503  
 Conc: 94.38 ng/ml



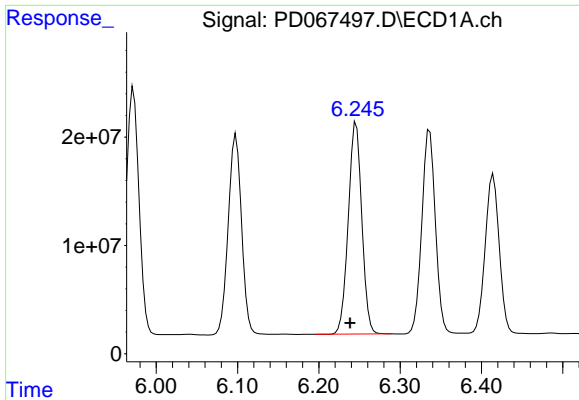
#14 Endrin

R.T.: 5.972 min  
 Delta R.T.: 0.007 min  
 Response: 253915742  
 Conc: 106.24 ng/ml



#14 Endrin

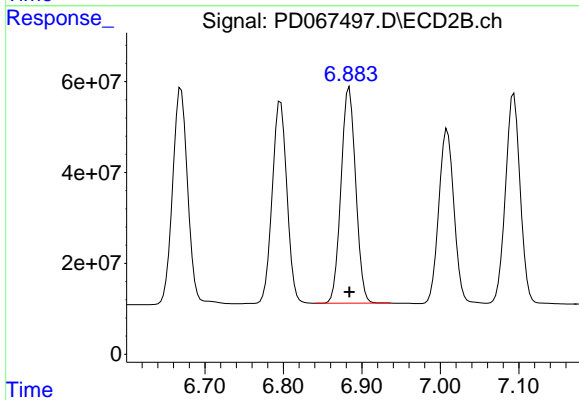
R.T.: 6.670 min  
 Delta R.T.: 0.000 min  
 Response: 630298728  
 Conc: 94.59 ng/ml



#15 Endosulfan II

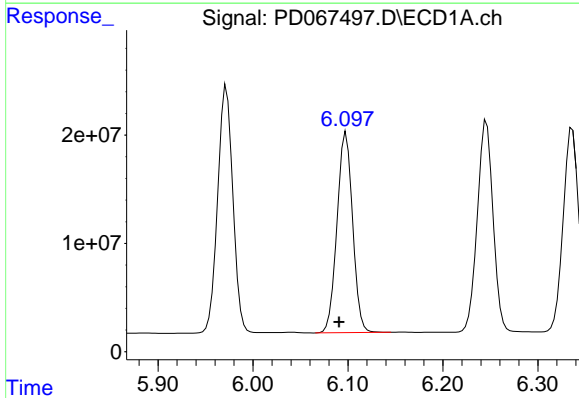
R.T.: 6.246 min  
Delta R.T.: 0.008 min  
Response: 225463269  
Conc: 102.09 ng/ml

Instrument :  
ECD\_D  
ClientSampleId :



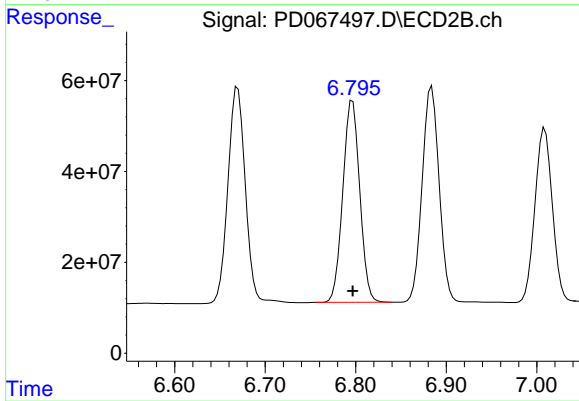
#15 Endosulfan II

R.T.: 6.884 min  
Delta R.T.: 0.000 min  
Response: 617290632  
Conc: 93.02 ng/ml



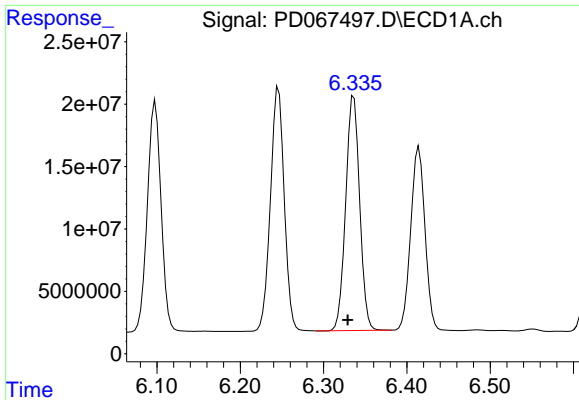
#16 4,4'-DDD

R.T.: 6.098 min  
Delta R.T.: 0.007 min  
Response: 211523357  
Conc: 107.40 ng/ml



#16 4,4'-DDD

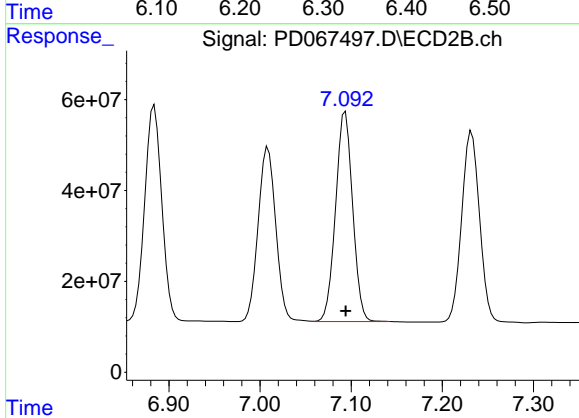
R.T.: 6.796 min  
Delta R.T.: 0.000 min  
Response: 577904554  
Conc: 95.41 ng/ml



#17 4,4'-DDT

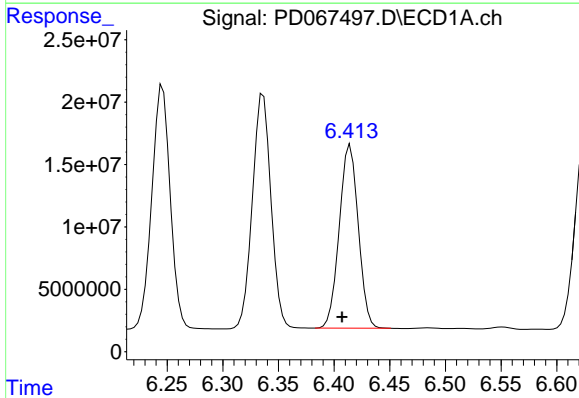
R.T.: 6.336 min  
 Delta R.T.: 0.007 min  
 Response: 218529115  
 Conc: 106.39 ng/ml

Instrument :  
 ECD\_D  
 ClientSampleId :



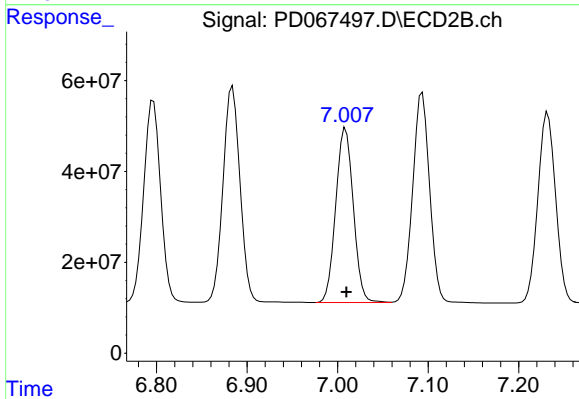
#17 4,4'-DDT

R.T.: 7.094 min  
 Delta R.T.: 0.000 min  
 Response: 600249391  
 Conc: 99.77 ng/ml



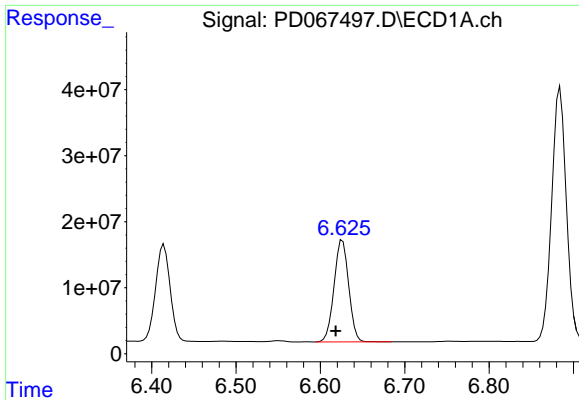
#18 Endrin aldehyde

R.T.: 6.415 min  
 Delta R.T.: 0.007 min  
 Response: 174578636  
 Conc: 107.76 ng/ml



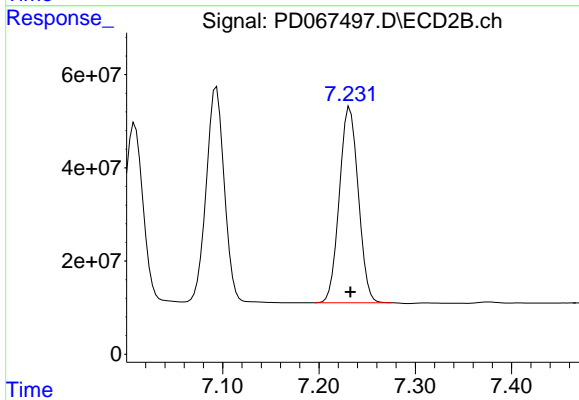
#18 Endrin aldehyde

R.T.: 7.009 min  
 Delta R.T.: 0.000 min  
 Response: 517652875  
 Conc: 101.17 ng/ml

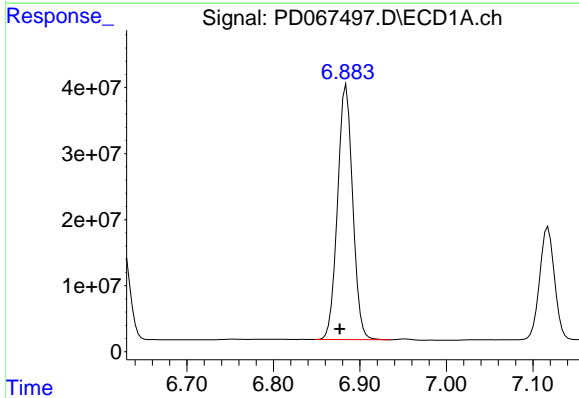


#19 Endosulfan Sulfate  
 R.T.: 6.626 min  
 Delta R.T.: 0.008 min  
 Response: 185959347  
 Conc: 99.47 ng/ml

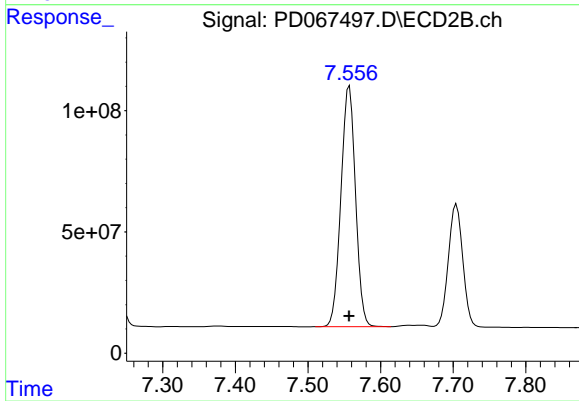
Instrument :  
 ECD\_D  
 ClientSampleId :



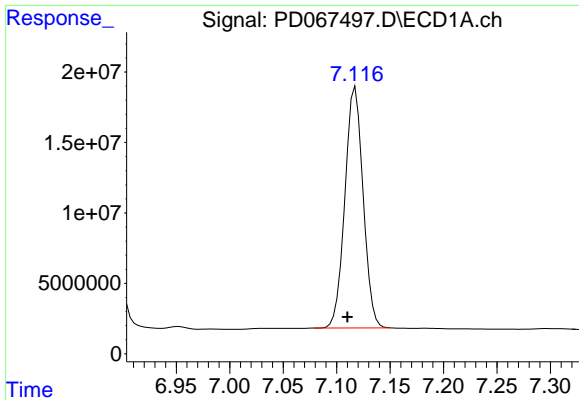
#19 Endosulfan Sulfate  
 R.T.: 7.232 min  
 Delta R.T.: 0.000 min  
 Response: 572117331  
 Conc: 93.78 ng/ml



#20 Methoxychlor  
 R.T.: 6.884 min  
 Delta R.T.: 0.008 min  
 Response: 465988586  
 Conc: 494.87 ng/ml



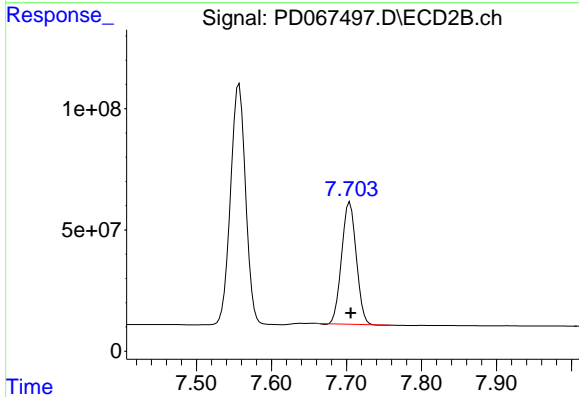
#20 Methoxychlor  
 R.T.: 7.557 min  
 Delta R.T.: 0.000 min  
 Response: 1384656822  
 Conc: 465.87 ng/ml



#21 Endrin ketone

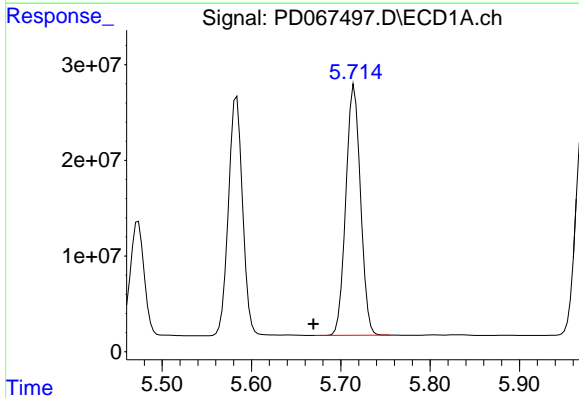
R.T.: 7.118 min  
 Delta R.T.: 0.008 min  
 Response: 203099300  
 Conc: 103.38 ng/ml

Instrument :  
 ECD\_D  
 ClientSampleId :



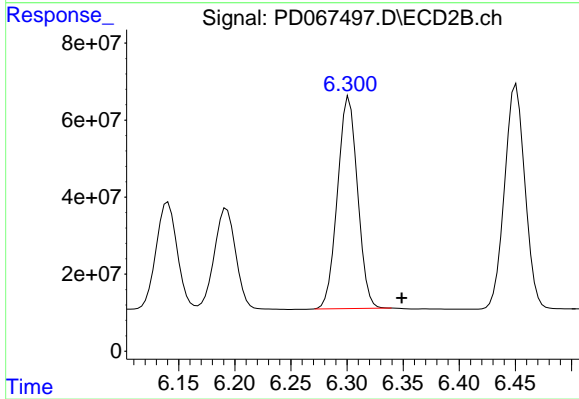
#21 Endrin ketone

R.T.: 7.705 min  
 Delta R.T.: -0.001 min  
 Response: 680652146  
 Conc: 95.77 ng/ml



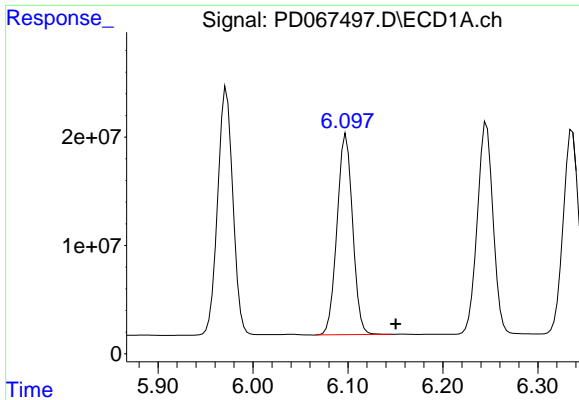
#22 Toxaphene-1

R.T.: 5.715 min  
 Delta R.T.: 0.046 min  
 Response: 298135931  
 Conc: 18412.53 ng/ml



#22 Toxaphene-1

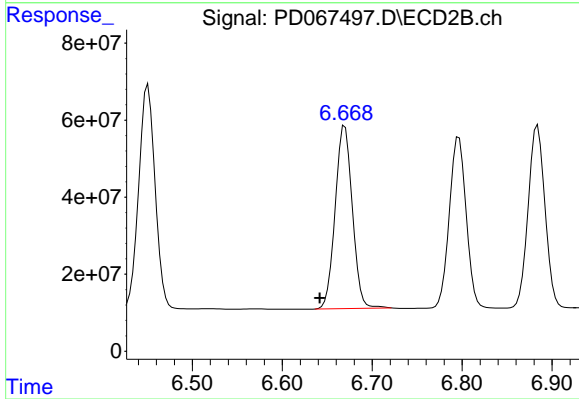
R.T.: 6.302 min  
 Delta R.T.: -0.047 min  
 Response: 684970450  
 Conc: 19086.59 ng/ml



#23 Toxaphene-2

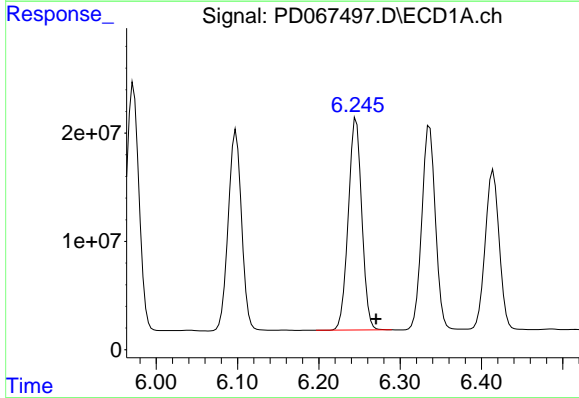
R.T.: 6.098 min  
 Delta R.T.: -0.052 min  
 Response: 211523357  
 Conc: 13029.20 ng/ml

Instrument :  
 ECD\_D  
 ClientSampleId :



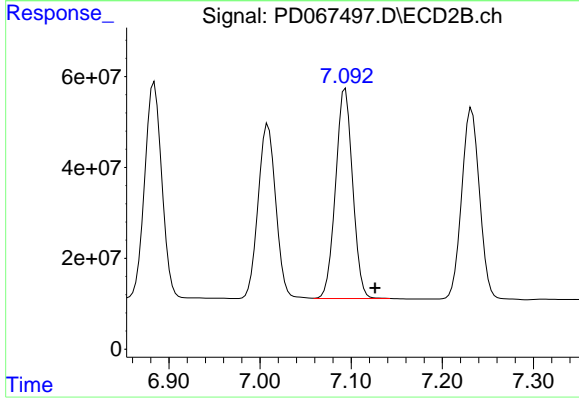
#23 Toxaphene-2

R.T.: 6.670 min  
 Delta R.T.: 0.028 min  
 Response: 630298728  
 Conc: 17259.36 ng/ml



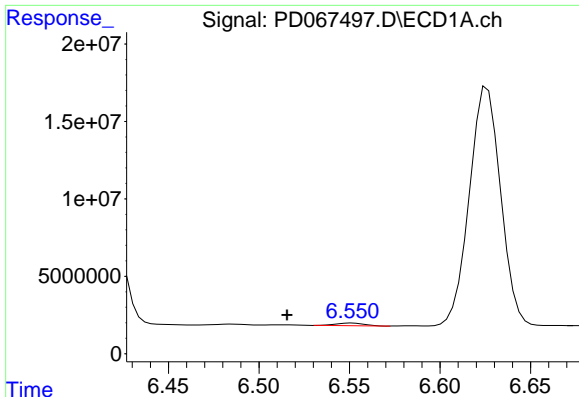
#24 Toxaphene-3

R.T.: 6.246 min  
 Delta R.T.: -0.024 min  
 Response: 225463269  
 Conc: 6040.52 ng/ml



#24 Toxaphene-3

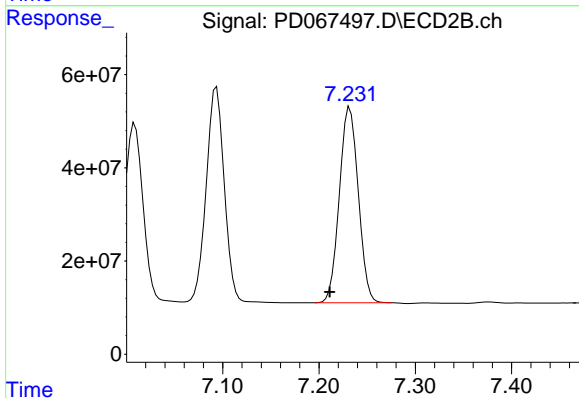
R.T.: 7.094 min  
 Delta R.T.: -0.032 min  
 Response: 600249391  
 Conc: 6165.61 ng/ml



#25 Toxaphene-4

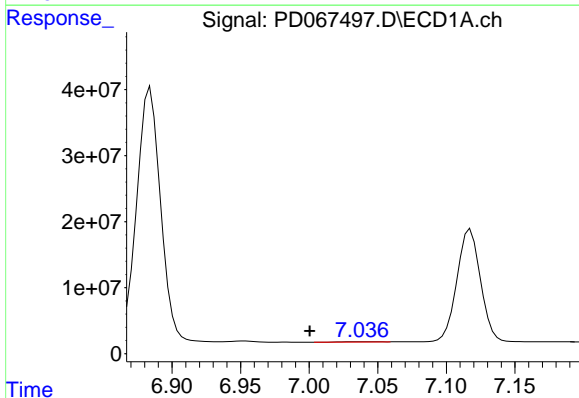
R.T.: 6.552 min  
 Delta R.T.: 0.036 min  
 Response: 1848070  
 Conc: 48.80 ng/ml

Instrument :  
 ECD\_D  
 ClientSampleId :



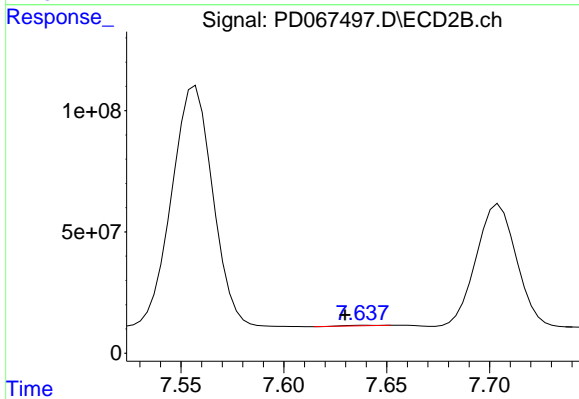
#25 Toxaphene-4

R.T.: 7.232 min  
 Delta R.T.: 0.021 min  
 Response: 572117331  
 Conc: 5802.73 ng/ml



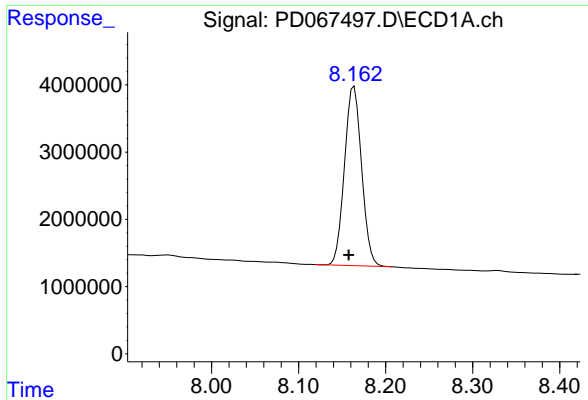
#26 Toxaphene-5

R.T.: 7.038 min  
 Delta R.T.: 0.037 min  
 Response: 612528  
 Conc: 16.48 ng/ml



#26 Toxaphene-5

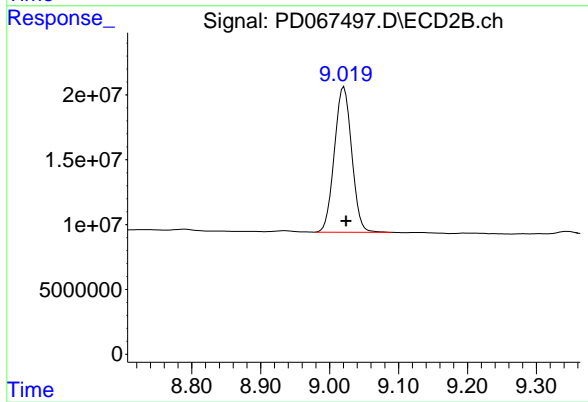
R.T.: 7.639 min  
 Delta R.T.: 0.009 min  
 Response: 2437347  
 Conc: 31.40 ng/ml



#27 Decachlorobiphenyl

R.T.: 8.164 min  
Delta R.T.: 0.006 min  
Response: 36424704  
Conc: 36.97 ng/ml

Instrument :  
ECD\_D  
ClientSampleId :



#27 Decachlorobiphenyl

R.T.: 9.021 min  
Delta R.T.: -0.003 min  
Response: 195694042  
Conc: 33.86 ng/ml