

Data Path : Z:\pestpcbsrv\HPCHEM1\ECD_L\Data\PL010220\
 Data File : PL055465.D
 Signal(s) : Signal #1: ECD1A.ch Signal #2: ECD2B.ch
 Acq On : 02 Jan 2020 15:01
 Operator : SG\AJ
 Sample : PB125841BS
 Misc :
 ALS Vial : 11 Sample Multiplier: 1

Instrument :
 ECD_L
 ClientSampled :

Integration File signal 1: autoint1.e
 Integration File signal 2: autoint2.e
 Quant Time: Jan 02 22:06:48 2020
 Quant Method : Z:\pestpcbsrv\HPCHEM1\ECD_L\methods\PL122119.M
 Quant Title : GC Extractables
 QLast Update : Sat Dec 21 05:21:06 2019
 Response via : Initial Calibration
 Integrator: ChemStation

Volume Inj. : 1 µl
 Signal #1 Phase : ZB-MR2 Signal #2 Phase: ZB-MR1
 Signal #1 Info : 30M x 0.32mm x0.2 Signal #2 Info : 30M x 0.32mm x0.5µm

	Compound	RT#1	RT#2	Resp#1	Resp#2	ng/ml	ng/ml

System Monitoring Compounds							
1)	SA Tetrachlo...	3.534	4.047	167.8E6	46450148	15.959	17.580
28)	SA Decachlor...	8.313	9.148	172.4E6	39947960	18.577	18.097
Target Compounds							
2)	A alpha-BHC	3.977	4.439	828.8E6	188.2E6	47.642	51.090
3)	MA gamma-BHC...	4.264	4.724	763.5E6	173.7E6	46.303	50.818
4)	MA Heptachlor	4.569	5.233	804.4E6	162.8E6	49.265	51.748
5)	MB Aldrin	4.820	5.539	758.0E6	151.6E6	49.641	52.650
6)	B beta-BHC	4.515	4.895	326.6E6	78381845	47.630	47.730
7)	B delta-BHC	4.723	5.113	722.7E6	135.2E6	47.749	48.367
8)	Heptachlo...	5.265	5.926	707.3E6	129.0E6	49.497	50.593
9)	A Endosulfan I	5.606	6.284	656.2E6	124.5E6	49.660	50.249
10)	B gamma-Chl...	5.493	6.161	719.8E6	135.8E6	49.406	51.155
11)	B alpha-Chl...	5.552	6.233	697.1E6	134.2E6	49.512	51.179
12)	B 4,4'-DDE	5.714	6.391	672.6E6	126.3E6	50.473	51.796
13)	MA Dieldrin	5.851	6.542	705.1E6	133.0E6	50.511	52.106
14)	MA Endrin	6.109	6.761	651.4E6	113.3E6	51.251	52.792
15)	B Endosulfa...	6.382	6.971	594.8E6	120.1E6	50.677	50.675
16)	A 4,4'-DDD	6.232	6.883	497.0E6	100.5E6	51.746	52.885
17)	MA 4,4'-DDT	6.473	7.183	538.9E6	104.9E6	53.528	53.437
18)	B Endrin al...	6.550	7.096	496.1E6	98573390	50.937	51.076
19)	B Endosulfa...	6.764	7.320	537.4E6	106.6E6	53.430	51.037
20)	A Methoxychlor	7.018	7.643	265.3E6	57099973	55.048	52.906
21)	B Endrin ke...	7.257	7.794	574.5E6	115.6E6	54.805	51.914
22)	Mirex	7.449	8.251	430.8E6	90071078	56.554	54.323
24)	Chlordane-2	0.000	5.539f	0	151.6E6	N.D.	1592.667 #
25)	Chlordane-3	5.493	6.161	719.8E6	135.8E6	567.942	421.895 #
26)	Chlordane-4	5.552	6.233	697.1E6	134.2E6	665.948	349.152 #
27)	Chlordane-5	6.382	0.000	594.8E6	0	1526.379	N.D. #

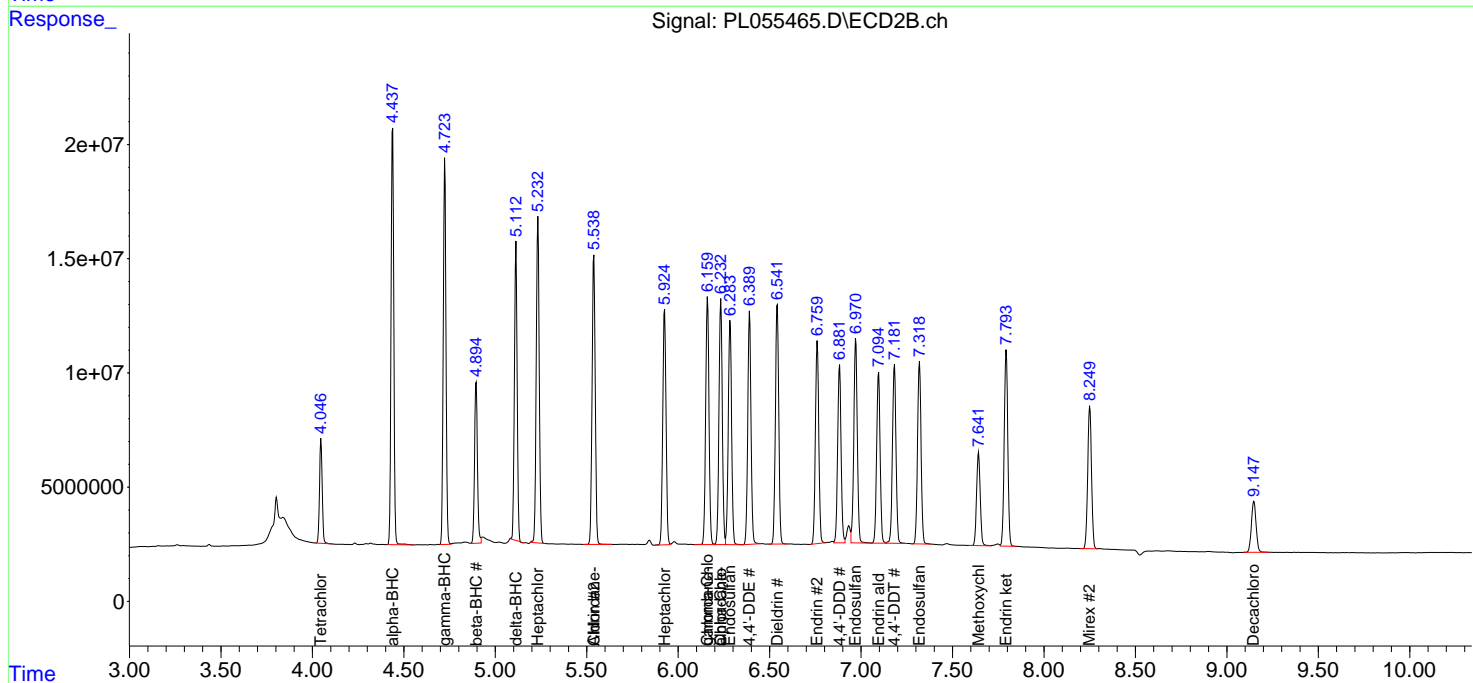
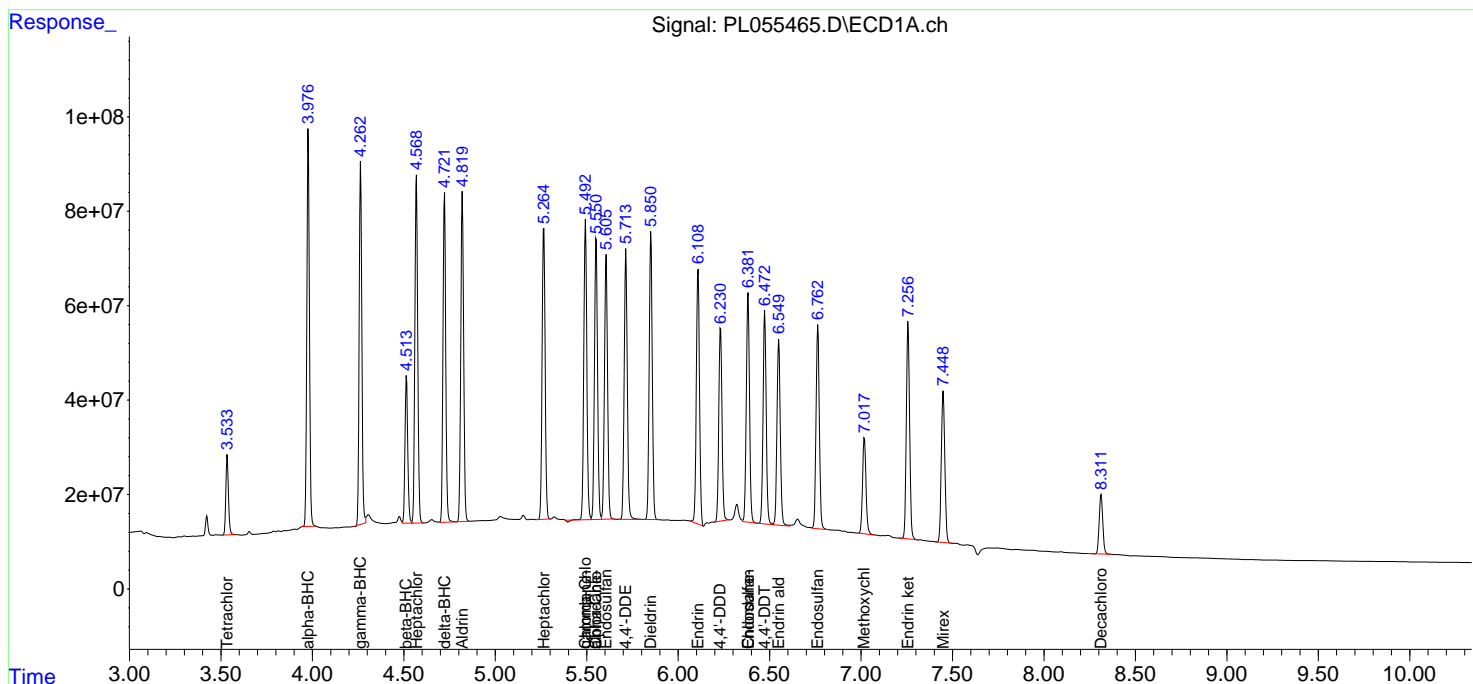
(f)=RT Delta > 1/2 Window (#)=Amounts differ by > 25% (m)=manual int.

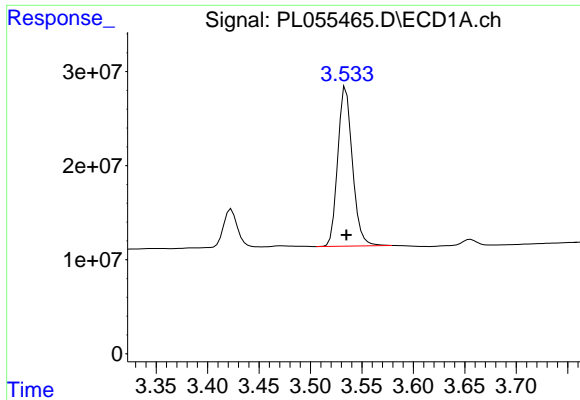
Data Path : Z:\pestpcbsrv\HPCHEM1\ECD_L\Data\PL010220\
 Data File : PL055465.D
 Signal(s) : Signal #1: ECD1A.ch Signal #2: ECD2B.ch
 Acq On : 02 Jan 2020 15:01
 Operator : SG\AJ
 Sample : PB125841BS
 Misc :
 ALS Vial : 11 Sample Multiplier: 1

Instrument :
 ECD_L
 ClientSampled :

Integration File signal 1: autoint1.e
 Integration File signal 2: autoint2.e
 Quant Time: Jan 02 22:06:48 2020
 Quant Method : Z:\pestpcbsrv\HPCHEM1\ECD_L\methods\PL122119.M
 Quant Title : GC Extractables
 QLast Update : Sat Dec 21 05:21:06 2019
 Response via : Initial Calibration
 Integrator: ChemStation

Volume Inj. : 1 µl
 Signal #1 Phase : ZB-MR2 Signal #2 Phase: ZB-MR1
 Signal #1 Info : 30M x 0.32mm x0.2 Signal #2 Info : 30M x 0.32mm x0.5µm

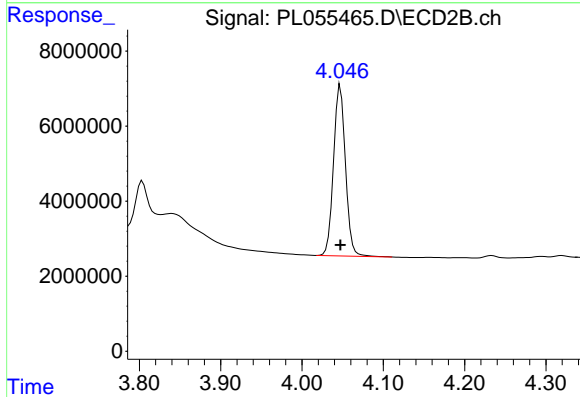




#1 Tetrachloro-m-xylene

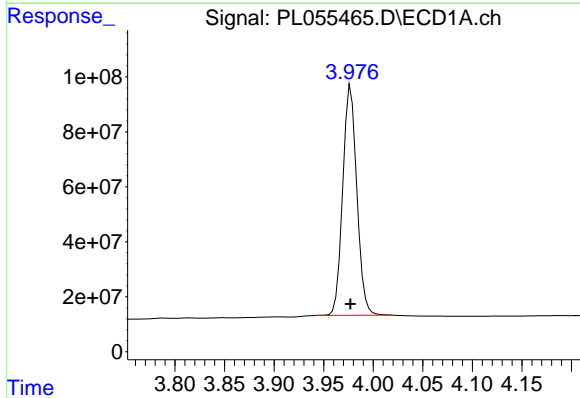
R.T.: 3.534 min
 Delta R.T.: 0.000 min
 Response: 167828941
 Conc: 15.96 ng/ml

Instrument :
 ECD_L
 ClientSampled :



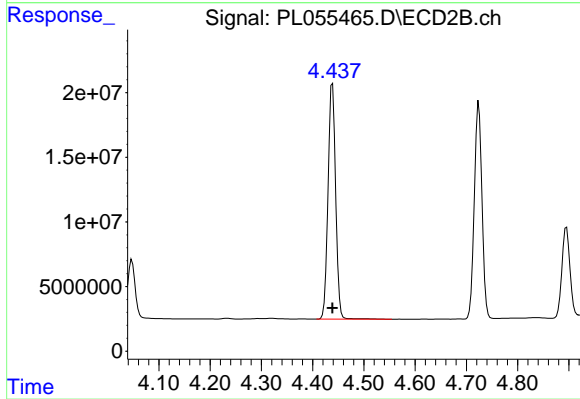
#1 Tetrachloro-m-xylene

R.T.: 4.047 min
 Delta R.T.: 0.000 min
 Response: 46450148
 Conc: 17.58 ng/ml



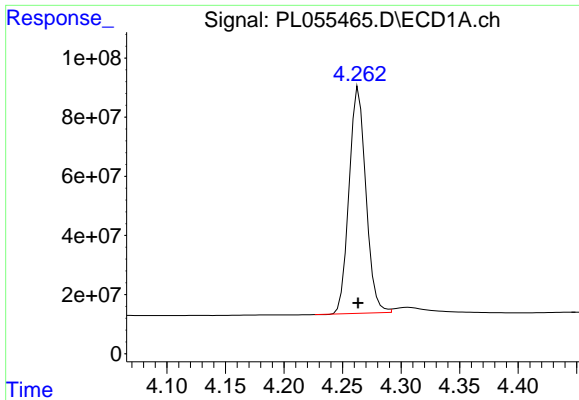
#2 alpha-BHC

R.T.: 3.977 min
 Delta R.T.: 0.000 min
 Response: 828839710
 Conc: 47.64 ng/ml



#2 alpha-BHC

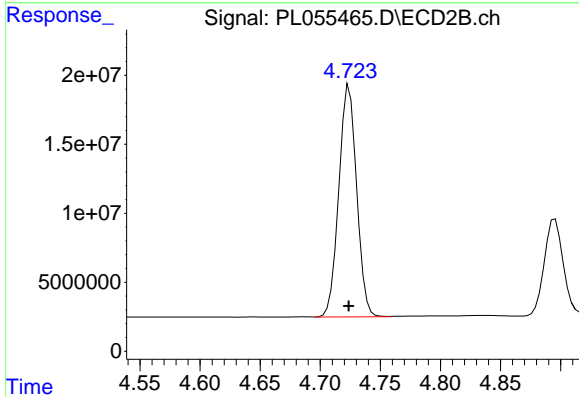
R.T.: 4.439 min
 Delta R.T.: 0.000 min
 Response: 188156169
 Conc: 51.09 ng/ml



#3 gamma-BHC (Lindane)

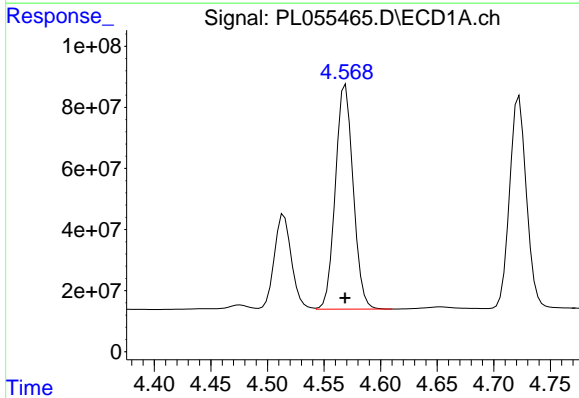
R.T.: 4.264 min
 Delta R.T.: 0.000 min
 Response: 763451461
 Conc: 46.30 ng/ml

Instrument :
 ECD_L
 ClientSampleId :



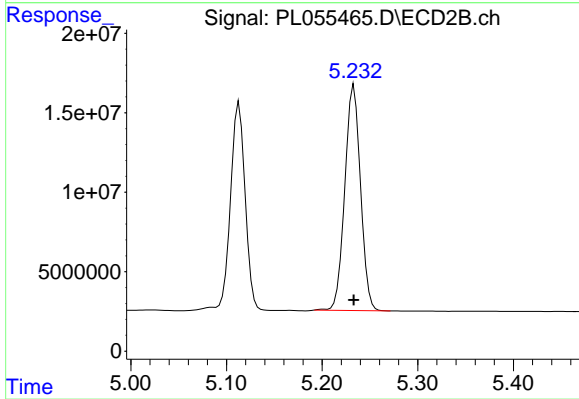
#3 gamma-BHC (Lindane)

R.T.: 4.724 min
 Delta R.T.: 0.000 min
 Response: 173727102
 Conc: 50.82 ng/ml



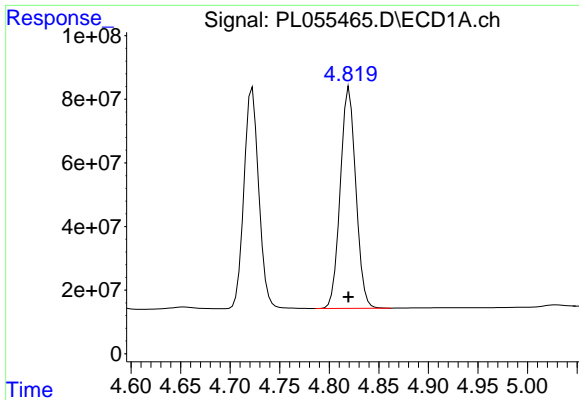
#4 Heptachlor

R.T.: 4.569 min
 Delta R.T.: 0.000 min
 Response: 804364666
 Conc: 49.26 ng/ml



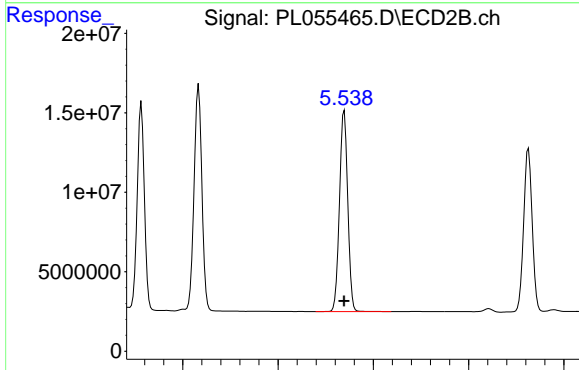
#4 Heptachlor

R.T.: 5.233 min
 Delta R.T.: 0.000 min
 Response: 162806390
 Conc: 51.75 ng/ml

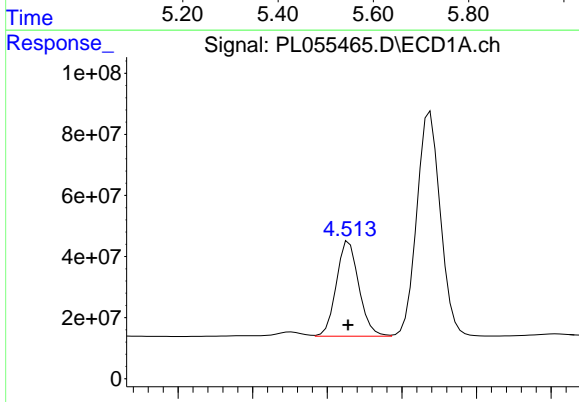


#5 Aldrin
 R.T.: 4.820 min
 Delta R.T.: 0.000 min
 Response: 757991306
 Conc: 49.64 ng/ml

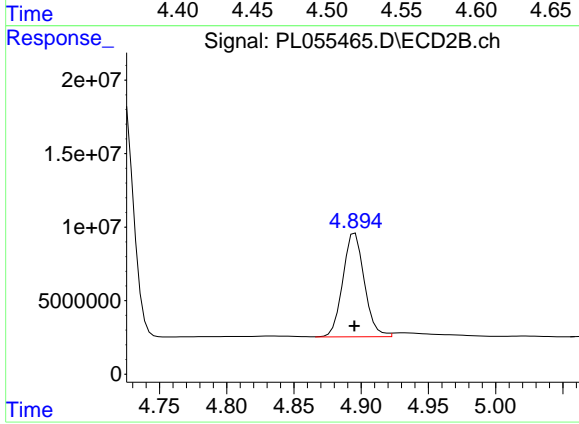
Instrument :
 ECD_L
 ClientSampled :



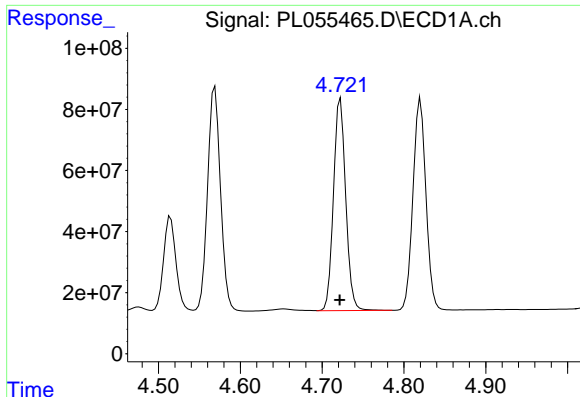
#5 Aldrin
 R.T.: 5.539 min
 Delta R.T.: 0.000 min
 Response: 151604658
 Conc: 52.65 ng/ml



#6 beta-BHC
 R.T.: 4.515 min
 Delta R.T.: 0.000 min
 Response: 326621855
 Conc: 47.63 ng/ml



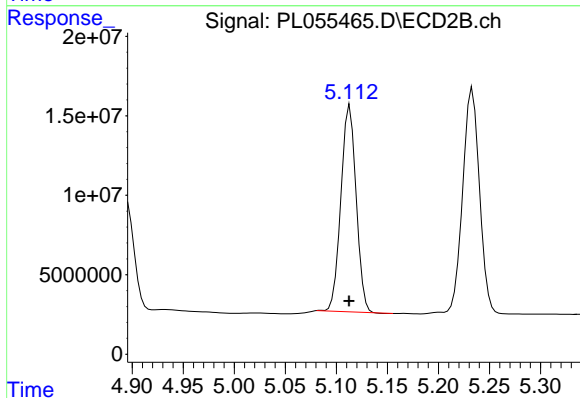
#6 beta-BHC
 R.T.: 4.895 min
 Delta R.T.: 0.000 min
 Response: 78381845
 Conc: 47.73 ng/ml



#7 delta-BHC

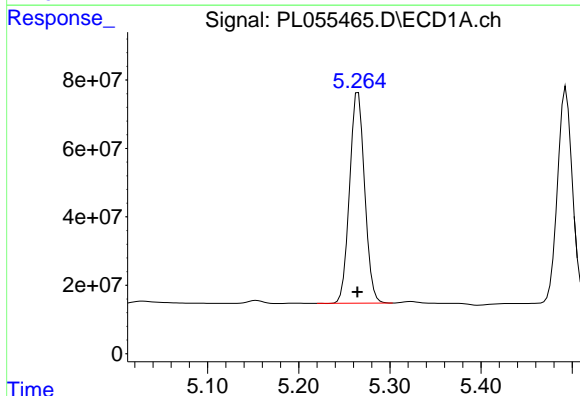
R.T.: 4.723 min
 Delta R.T.: 0.001 min
 Response: 722731907
 Conc: 47.75 ng/ml

Instrument :
 ECD_L
 ClientSampled :



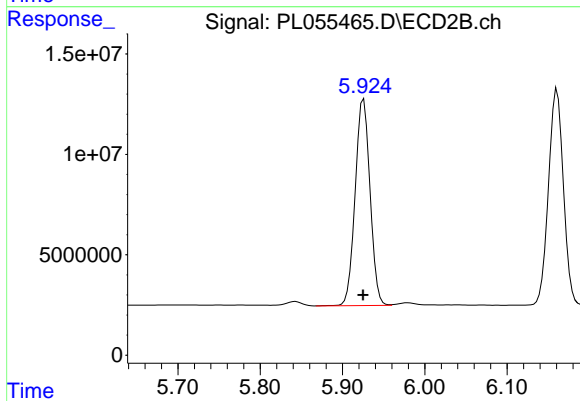
#7 delta-BHC

R.T.: 5.113 min
 Delta R.T.: 0.001 min
 Response: 135248313
 Conc: 48.37 ng/ml



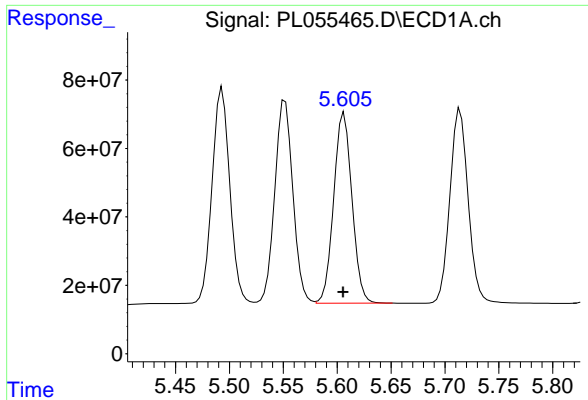
#8 Heptachlor epoxide

R.T.: 5.265 min
 Delta R.T.: 0.000 min
 Response: 707269627
 Conc: 49.50 ng/ml



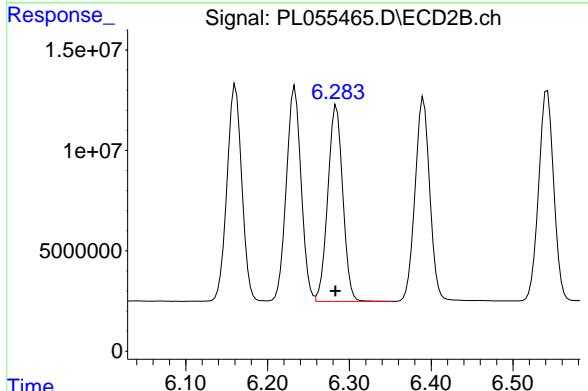
#8 Heptachlor epoxide

R.T.: 5.926 min
 Delta R.T.: 0.000 min
 Response: 128951481
 Conc: 50.59 ng/ml

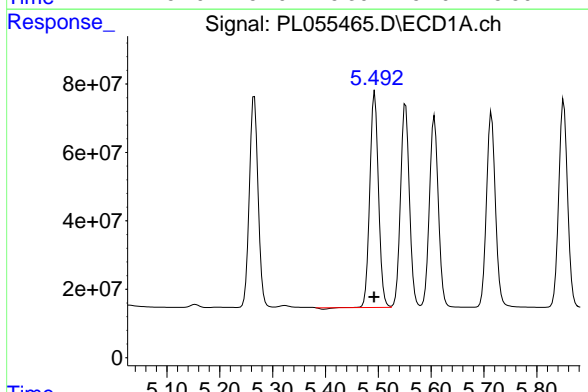


#9 Endosulfan I
 R.T.: 5.606 min
 Delta R.T.: 0.001 min
 Response: 656162844
 Conc: 49.66 ng/ml

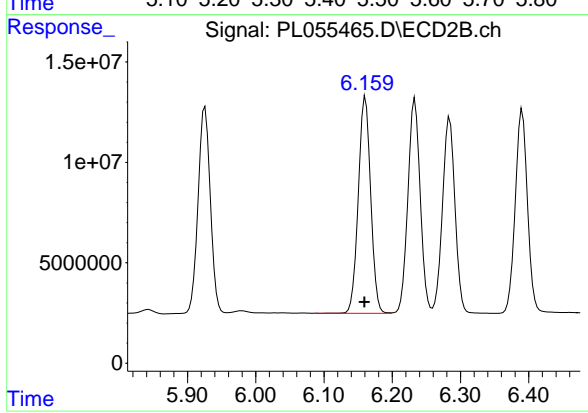
Instrument :
 ECD_L
 ClientSampleId :



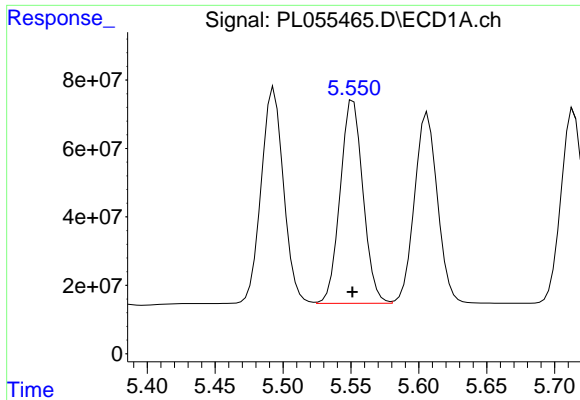
#9 Endosulfan I
 R.T.: 6.284 min
 Delta R.T.: 0.001 min
 Response: 124458760
 Conc: 50.25 ng/ml



#10 gamma-Chlordane
 R.T.: 5.493 min
 Delta R.T.: 0.001 min
 Response: 719845670
 Conc: 49.41 ng/ml

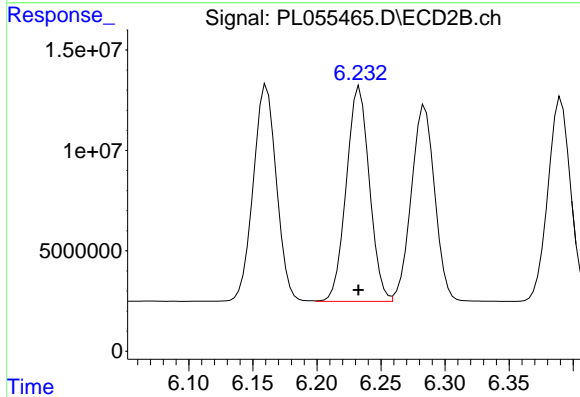


#10 gamma-Chlordane
 R.T.: 6.161 min
 Delta R.T.: 0.001 min
 Response: 135771935
 Conc: 51.15 ng/ml

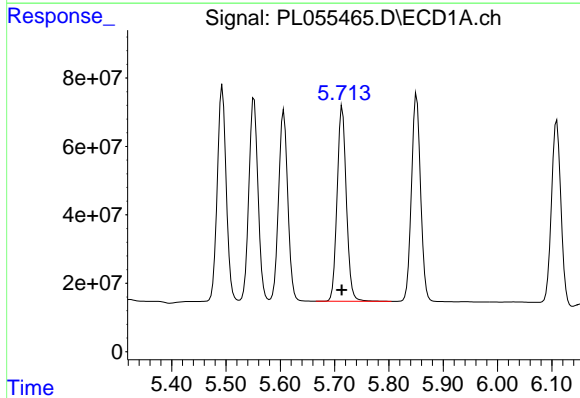


#11 alpha-Chlordane
 R.T.: 5.552 min
 Delta R.T.: 0.000 min
 Response: 697077201
 Conc: 49.51 ng/ml

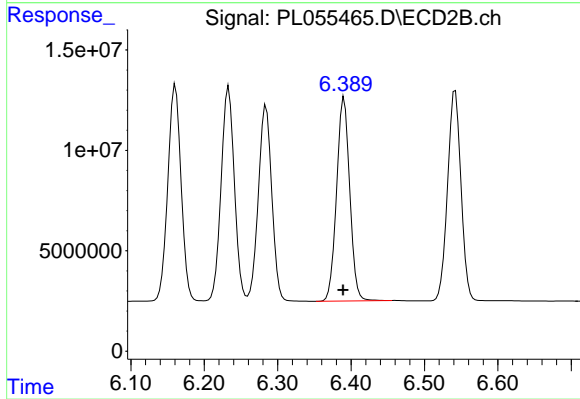
Instrument :
 ECD_L
 ClientSampled :



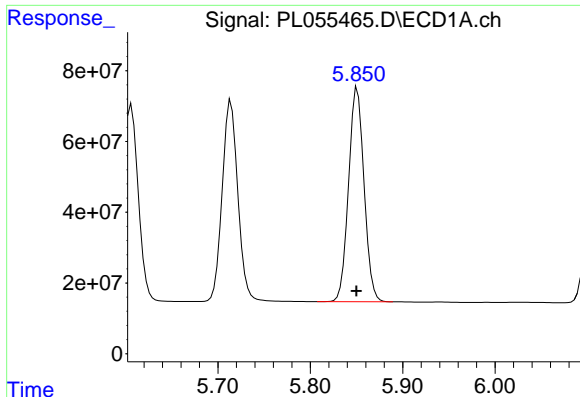
#11 alpha-Chlordane
 R.T.: 6.233 min
 Delta R.T.: 0.000 min
 Response: 134206468
 Conc: 51.18 ng/ml



#12 4,4'-DDE
 R.T.: 5.714 min
 Delta R.T.: 0.000 min
 Response: 672611534
 Conc: 50.47 ng/ml



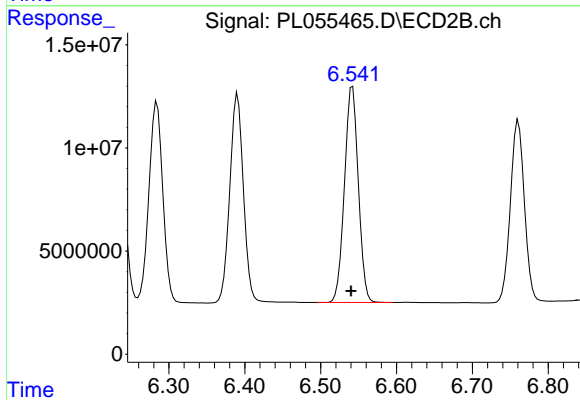
#12 4,4'-DDE
 R.T.: 6.391 min
 Delta R.T.: 0.002 min
 Response: 126291375
 Conc: 51.80 ng/ml



#13 Dieldrin

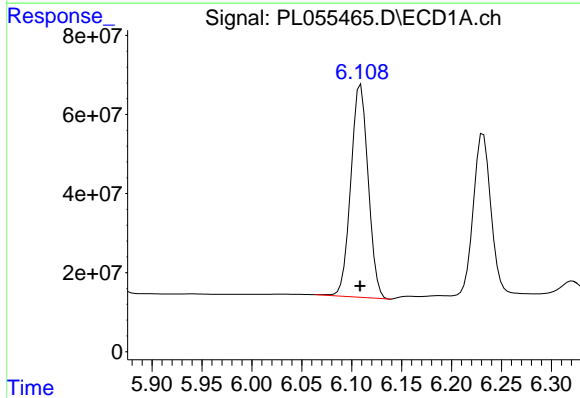
R.T.: 5.851 min
 Delta R.T.: 0.001 min
 Response: 705129585
 Conc: 50.51 ng/ml

Instrument :
 ECD_L
 ClientSampled :



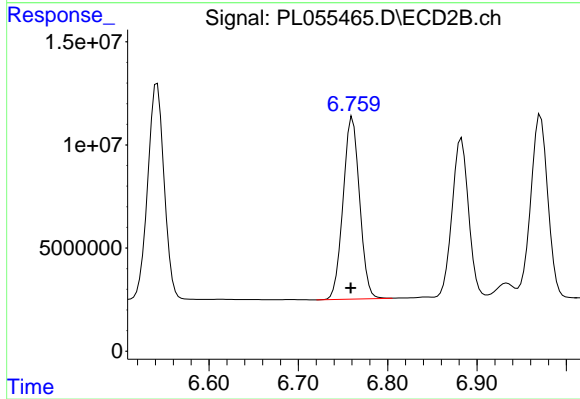
#13 Dieldrin

R.T.: 6.542 min
 Delta R.T.: 0.002 min
 Response: 132978158
 Conc: 52.11 ng/ml



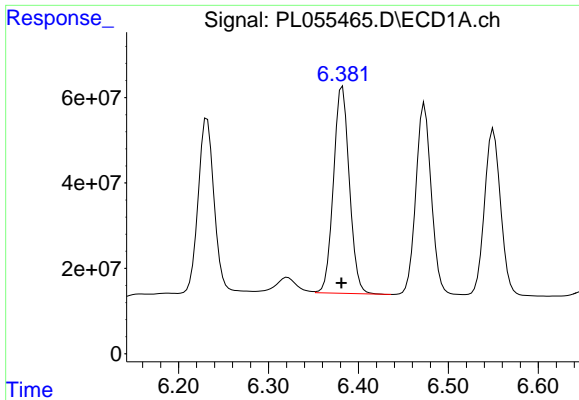
#14 Endrin

R.T.: 6.109 min
 Delta R.T.: 0.000 min
 Response: 651380243
 Conc: 51.25 ng/ml



#14 Endrin

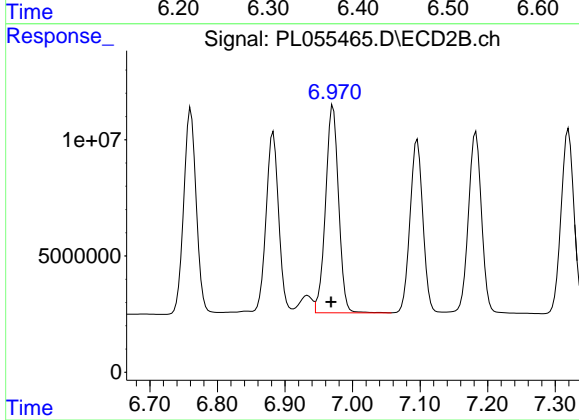
R.T.: 6.761 min
 Delta R.T.: 0.002 min
 Response: 113290819
 Conc: 52.79 ng/ml



#15 Endosulfan II

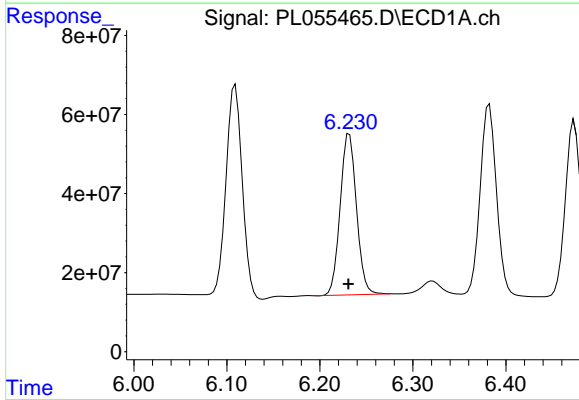
R.T.: 6.382 min
 Delta R.T.: 0.001 min
 Response: 594781307
 Conc: 50.68 ng/ml

Instrument :
 ECD_L
 ClientSampled :



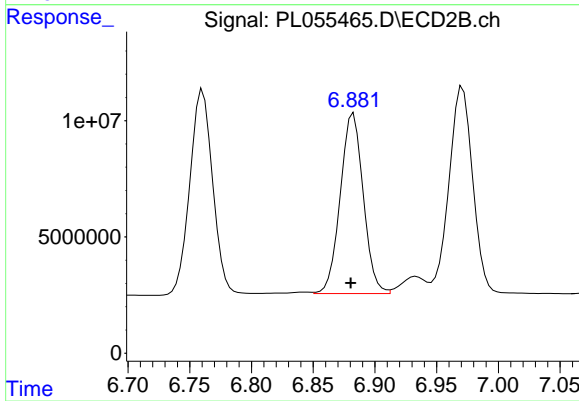
#15 Endosulfan II

R.T.: 6.971 min
 Delta R.T.: 0.003 min
 Response: 120136017
 Conc: 50.67 ng/ml



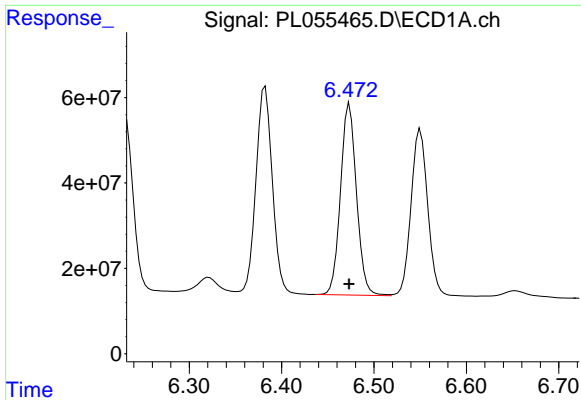
#16 4,4'-DDD

R.T.: 6.232 min
 Delta R.T.: 0.001 min
 Response: 496998012
 Conc: 51.75 ng/ml



#16 4,4'-DDD

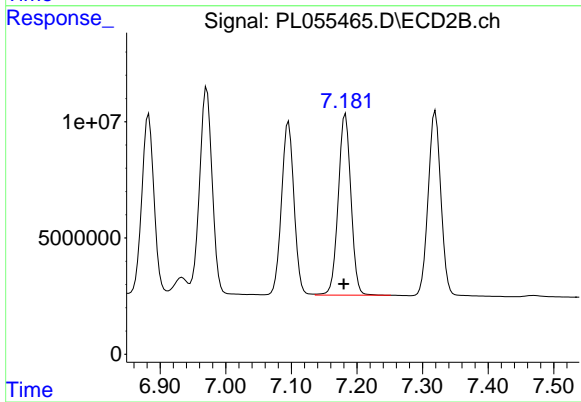
R.T.: 6.883 min
 Delta R.T.: 0.002 min
 Response: 100538658
 Conc: 52.89 ng/ml



#17 4,4'-DDT

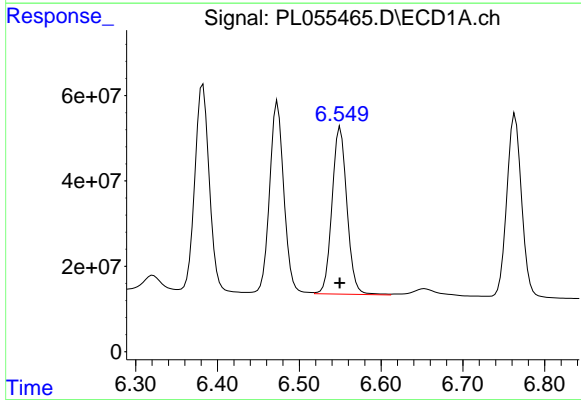
R.T.: 6.473 min
Delta R.T.: 0.000 min
Response: 538869480
Conc: 53.53 ng/ml

Instrument :
ECD_L
ClientSampleId :



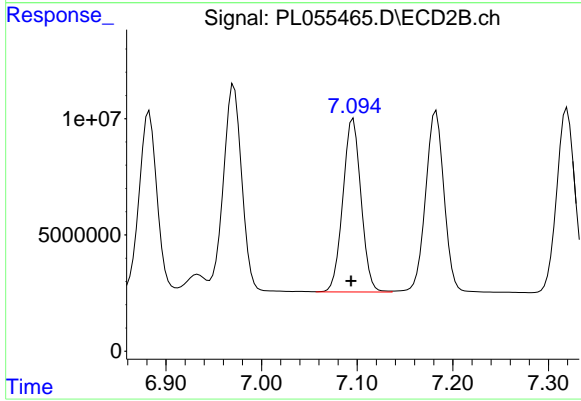
#17 4,4'-DDT

R.T.: 7.183 min
Delta R.T.: 0.003 min
Response: 104876436
Conc: 53.44 ng/ml



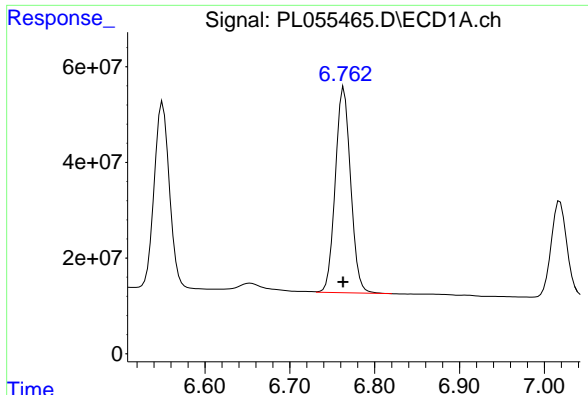
#18 Endrin aldehyde

R.T.: 6.550 min
Delta R.T.: 0.000 min
Response: 496093281
Conc: 50.94 ng/ml



#18 Endrin aldehyde

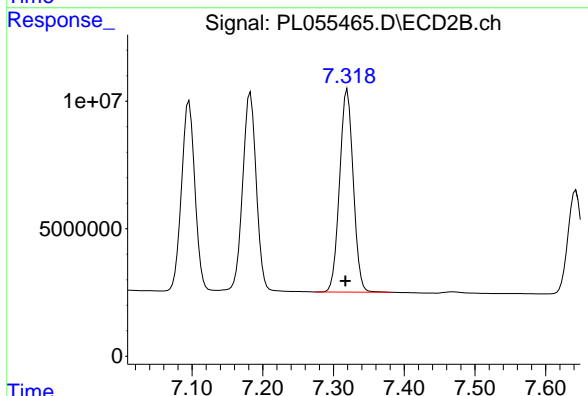
R.T.: 7.096 min
Delta R.T.: 0.002 min
Response: 98573390
Conc: 51.08 ng/ml



#19 Endosulfan Sulfate

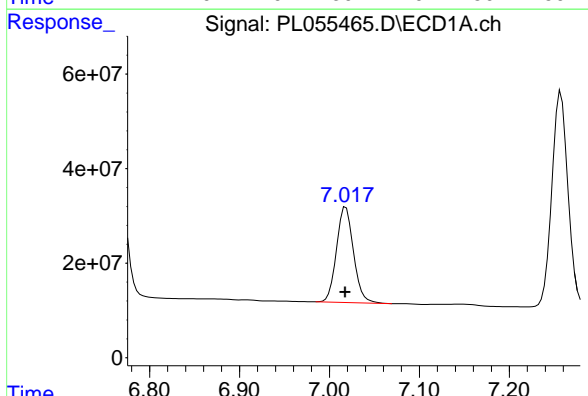
R.T.: 6.764 min
Delta R.T.: 0.001 min
Response: 537445423
Conc: 53.43 ng/ml

Instrument :
ECD_L
ClientSampled :



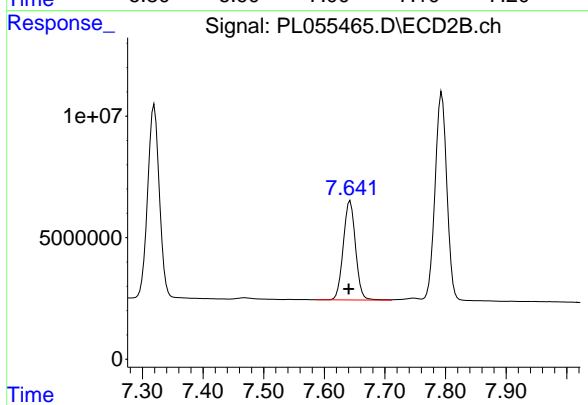
#19 Endosulfan Sulfate

R.T.: 7.320 min
Delta R.T.: 0.003 min
Response: 106594990
Conc: 51.04 ng/ml



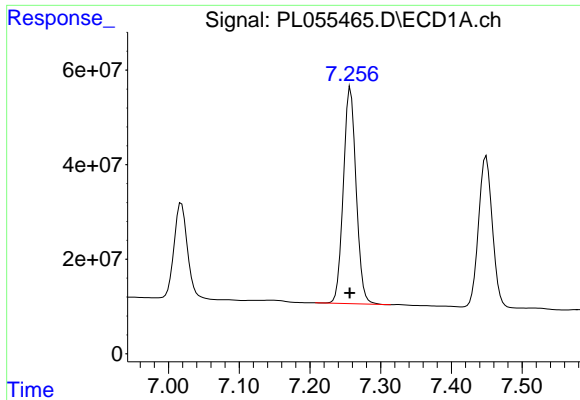
#20 Methoxychlor

R.T.: 7.018 min
Delta R.T.: 0.000 min
Response: 265299981
Conc: 55.05 ng/ml



#20 Methoxychlor

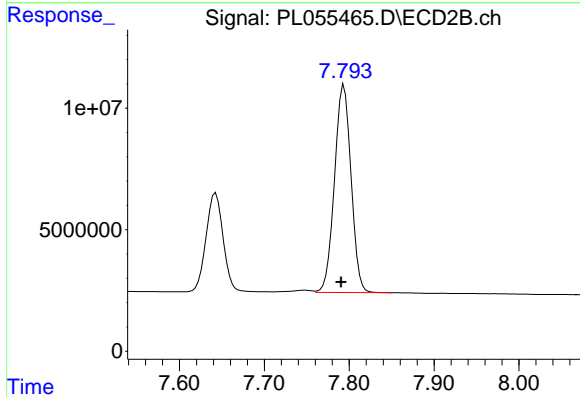
R.T.: 7.643 min
Delta R.T.: 0.003 min
Response: 57099973
Conc: 52.91 ng/ml



#21 Endrin ketone

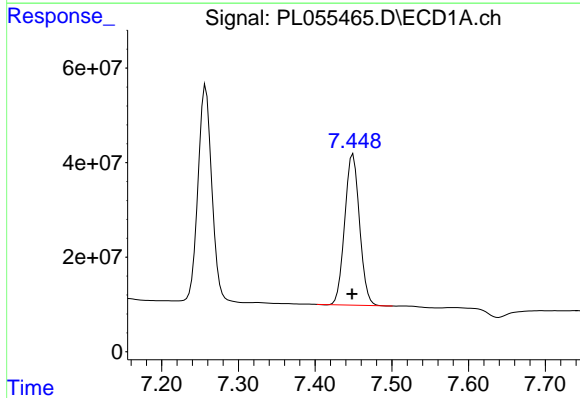
R.T.: 7.257 min
 Delta R.T.: 0.001 min
 Response: 574450845
 Conc: 54.81 ng/ml

Instrument :
 ECD_L
 ClientSampled :



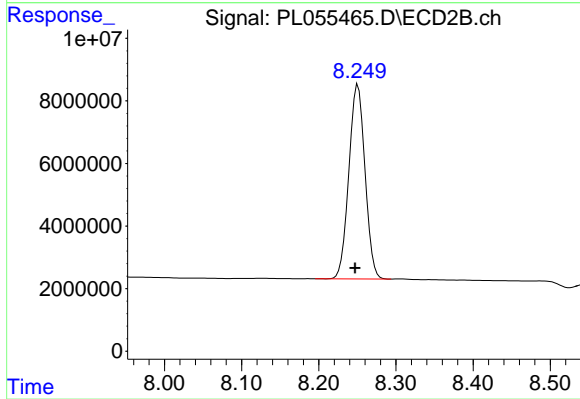
#21 Endrin ketone

R.T.: 7.794 min
 Delta R.T.: 0.004 min
 Response: 115611699
 Conc: 51.91 ng/ml



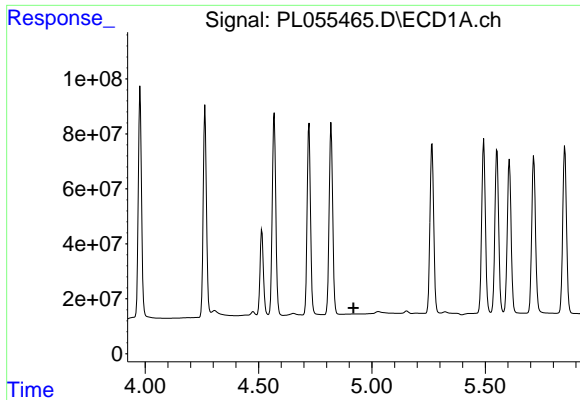
#22 Mirex

R.T.: 7.449 min
 Delta R.T.: 0.001 min
 Response: 430776434
 Conc: 56.55 ng/ml



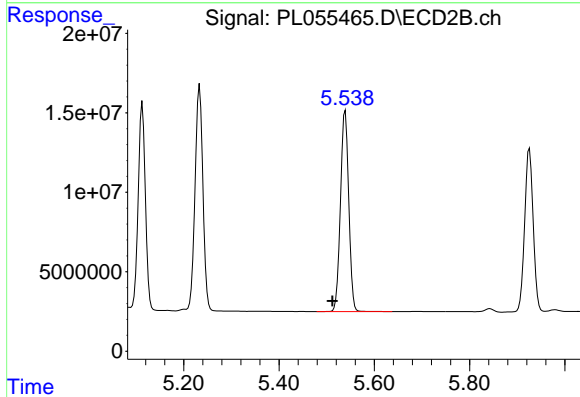
#22 Mirex

R.T.: 8.251 min
 Delta R.T.: 0.004 min
 Response: 90071078
 Conc: 54.32 ng/ml

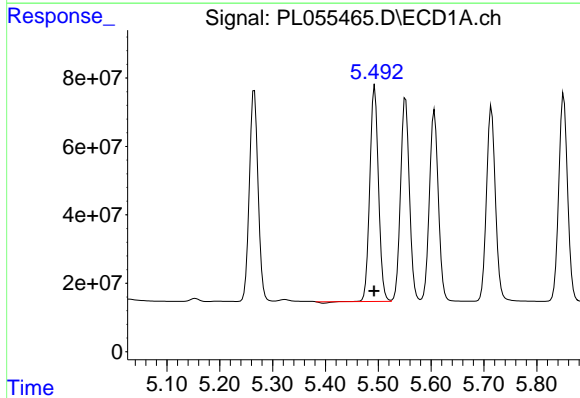


#24 Chlordane-2
 R.T.: 0.000 min
 Exp R.T.: 4.919 min
 Response: 0
 Conc: N.D.

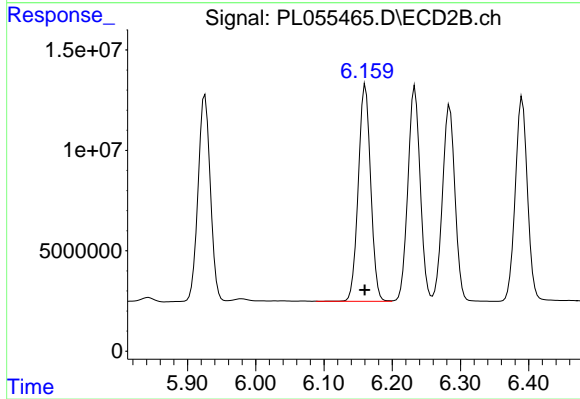
Instrument :
 ECD_L
 ClientSampled :



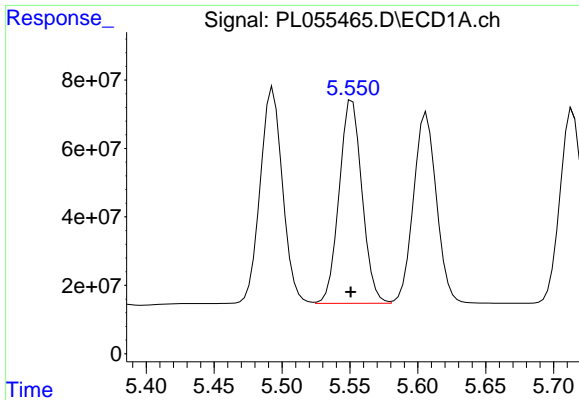
#24 Chlordane-2
 R.T.: 5.539 min
 Delta R.T.: 0.027 min
 Response: 151604658
 Conc: 1592.67 ng/ml



#25 Chlordane-3
 R.T.: 5.493 min
 Delta R.T.: 0.000 min
 Response: 719845670
 Conc: 567.94 ng/ml

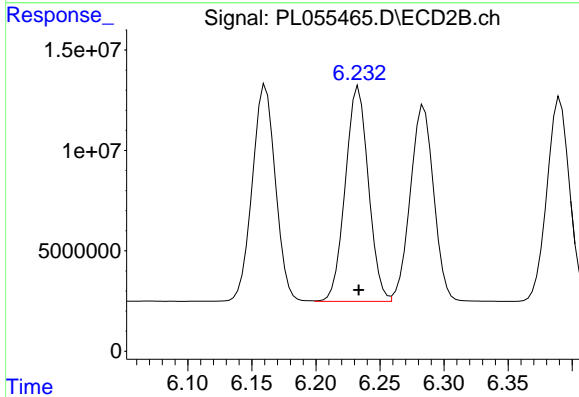


#25 Chlordane-3
 R.T.: 6.161 min
 Delta R.T.: 0.001 min
 Response: 135771935
 Conc: 421.90 ng/ml

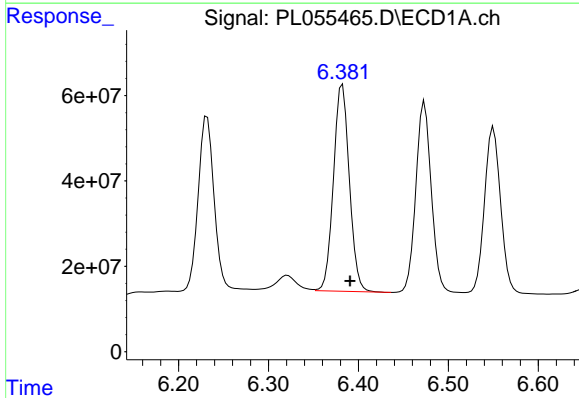


#26 Chlordane-4
 R.T.: 5.552 min
 Delta R.T.: 0.001 min
 Response: 697077201
 Conc: 665.95 ng/ml

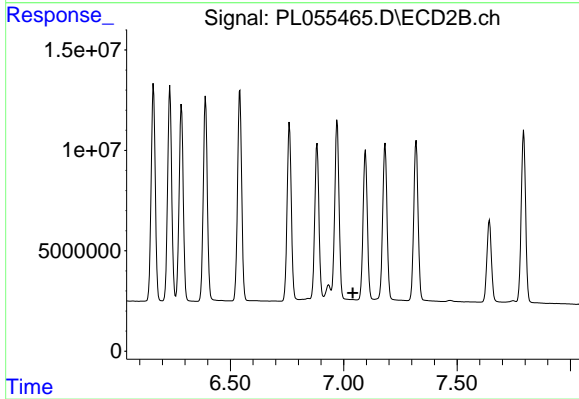
Instrument :
 ECD_L
 ClientSampled :



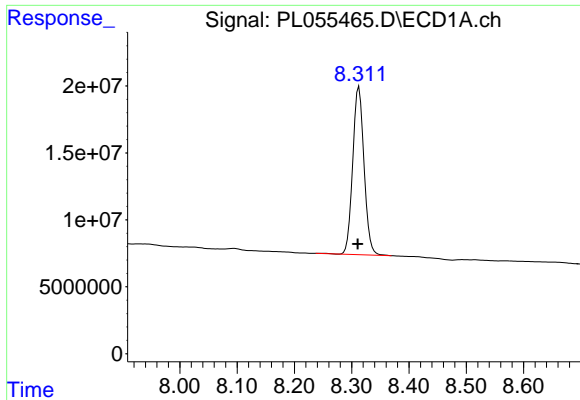
#26 Chlordane-4
 R.T.: 6.233 min
 Delta R.T.: 0.000 min
 Response: 134206468
 Conc: 349.15 ng/ml



#27 Chlordane-5
 R.T.: 6.382 min
 Delta R.T.: -0.009 min
 Response: 594781307
 Conc: 1526.38 ng/ml



#27 Chlordane-5
 R.T.: 0.000 min
 Exp R.T. : 7.041 min
 Response: 0
 Conc: N.D.



#28 Decachlorobiphenyl

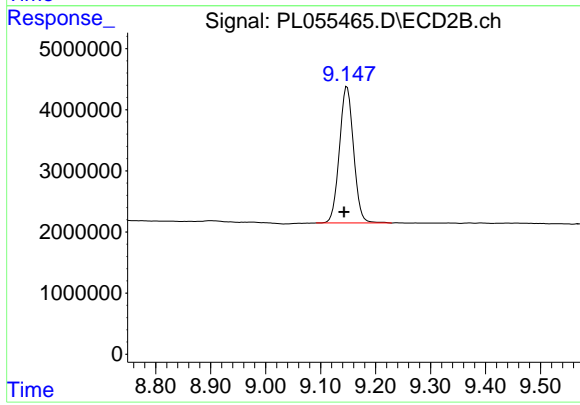
R.T.: 8.313 min

Delta R.T.: 0.002 min

Response: 172374694

Conc: 18.58 ng/ml

Instrument :
ECD_L
ClientSampleId :



#28 Decachlorobiphenyl

R.T.: 9.148 min

Delta R.T.: 0.005 min

Response: 39947960

Conc: 18.10 ng/ml