

Data Path : Z:\pestpcbsrv\HPCHEM1\ECD\_L\Data\PL010220\  
 Data File : PL055481.D  
 Signal(s) : Signal #1: ECD1A.ch Signal #2: ECD2B.ch  
 Acq On : 02 Jan 2020 19:28  
 Operator : SG\AJ  
 Sample : K6482-10MSD  
 Misc :  
 ALS Vial : 22 Sample Multiplier: 1

Instrument :  
 ECD\_L  
 ClientSampleId :

Integration File signal 1: autoint1.e  
 Integration File signal 2: autoint2.e  
 Quant Time: Jan 02 22:09:54 2020  
 Quant Method : Z:\pestpcbsrv\HPCHEM1\ECD\_L\methods\PL122119.M  
 Quant Title : GC Extractables  
 QLast Update : Sat Dec 21 05:21:06 2019  
 Response via : Initial Calibration  
 Integrator: ChemStation

Volume Inj. : 1 µl  
 Signal #1 Phase : ZB-MR2 Signal #2 Phase: ZB-MR1  
 Signal #1 Info : 30M x 0.32mm x0.2 Signal #2 Info : 30M x 0.32mm x0.5µm

	Compound	RT#1	RT#2	Resp#1	Resp#2	ng/ml	ng/ml
-----							
System Monitoring Compounds							
1)	SA Tetrachlo...	3.534	4.048	191.0E6	57050298	18.165	21.592
28)	SA Decachlor...	8.313	9.148	181.7E6	45536606	19.579	20.628
Target Compounds							
2)	A alpha-BHC	3.977	4.440	750.6E6	198.9E6	43.143	54.001 #
3)	MA gamma-BHC...	4.264	4.725	689.9E6	179.3E6	41.844	52.438 #
4)	MA Heptachlor	4.569	5.234	738.3E6	166.7E6	45.219	52.999
5)	MB Aldrin	4.819	5.540	676.4E6	158.6E6	44.298	55.094
6)	B beta-BHC	4.514	4.896	297.9E6	82326561	43.443	50.132
7)	B delta-BHC	4.722	5.114	616.0E6	125.8E6	40.697	44.976
8)	Heptachlo...	5.265	5.927	634.9E6	129.2E6	44.429	50.700
9)	A Endosulfan I	5.606	6.285	565.1E6	131.6E6	42.771	53.140
10)	B gamma-Chl...	5.493	6.162	651.9E6	140.2E6	44.740	52.840
11)	B alpha-Chl...	5.553	6.234	912.1E6	138.5E6	64.787	52.817
12)	B 4,4'-DDE	5.714	6.391	739.9E6	139.9E6	55.519	57.365
13)	MA Dieldrin	5.851	6.543	632.3E6	137.1E6	45.297	53.702
14)	MA Endrin	6.109	6.762	590.8E6	114.5E6	46.483	53.349
15)	B Endosulfa...	6.389	6.985f	14179.3E6	3218.2E6	1208.114	1357.497
16)	A 4,4'-DDD	6.232	6.884	449.1E6	102.7E6	46.755	54.017
17)	MA 4,4'-DDT	6.473	7.183	789.9E6	128.3E6	78.468	65.350
18)	B Endrin al...	6.550	7.096	578.8E6	115.8E6	59.428	59.984
19)	B Endosulfa...	6.765	7.321	451.3E6	107.0E6	44.861	51.225
20)	A Methoxychlor	7.018	7.644	231.7E6	54209869	48.070	50.228
21)	B Endrin ke...	7.258	7.795	484.5E6	115.6E6	46.222	51.910
22)	Mirex	7.450	8.252	281.3E6	81062460	36.932	48.890 #
24)	Chlordane-2	0.000	5.540f	0	158.6E6	N.D.	1666.595 #
25)	Chlordane-3	5.493	6.162	651.9E6	140.2E6	514.304	435.796
26)	Chlordane-4	5.553	6.234	912.1E6	138.5E6	871.406	360.331 #
27)	Chlordane-5	6.389	0.000	14179.3E6	0	36388.018	N.D. #

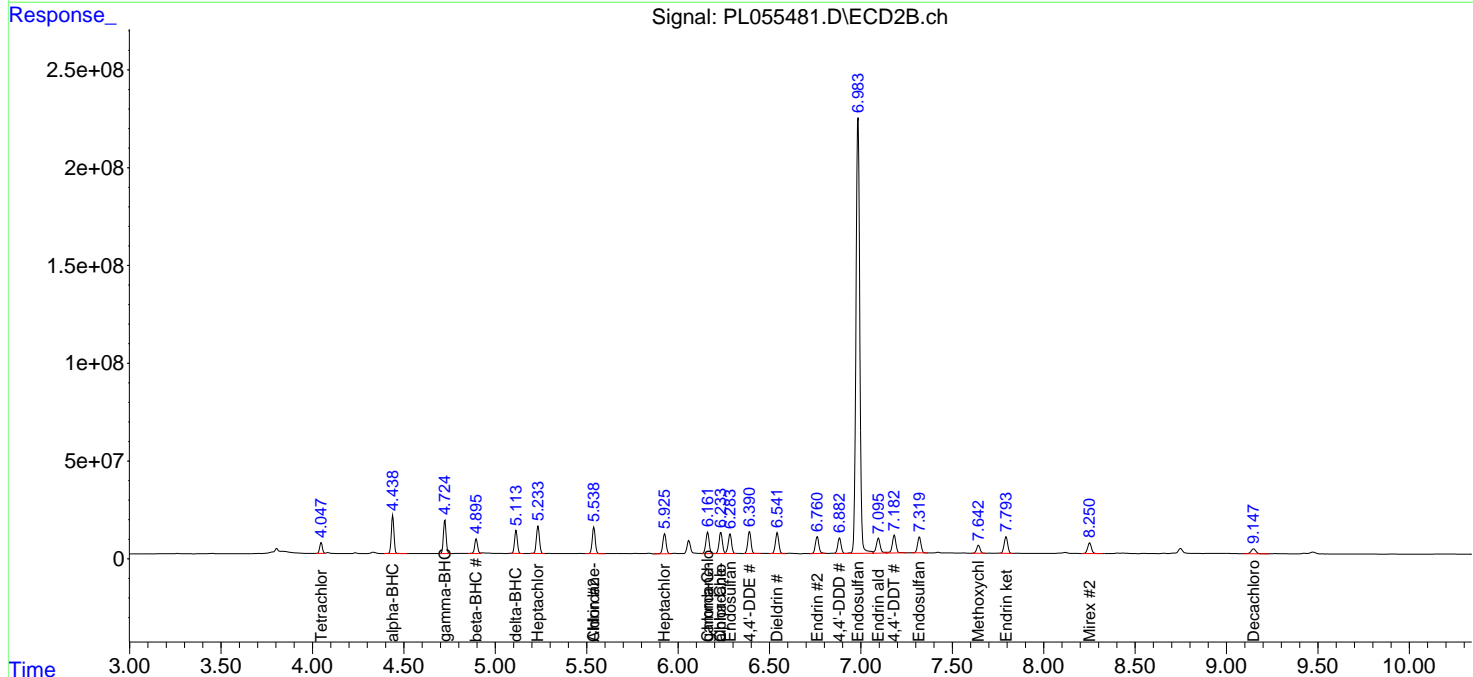
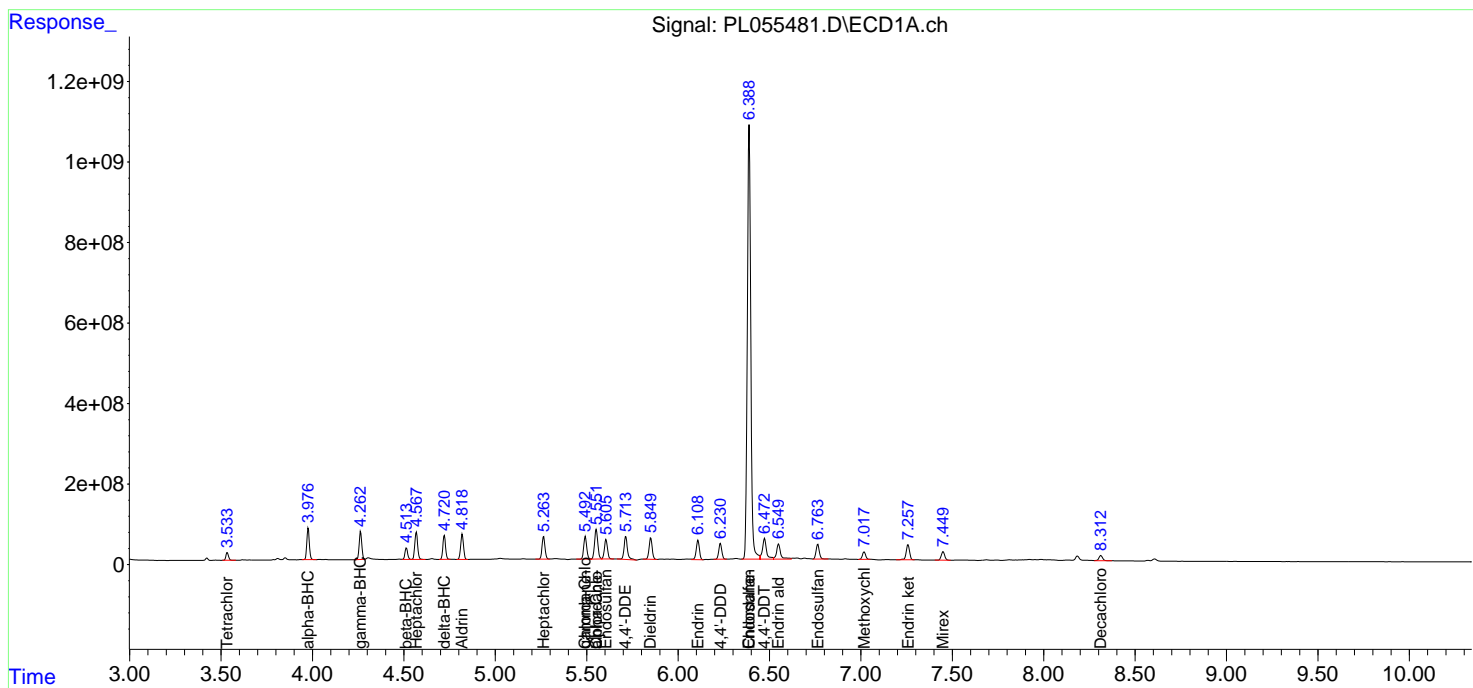
(f)=RT Delta > 1/2 Window (#)=Amounts differ by > 25% (m)=manual int.

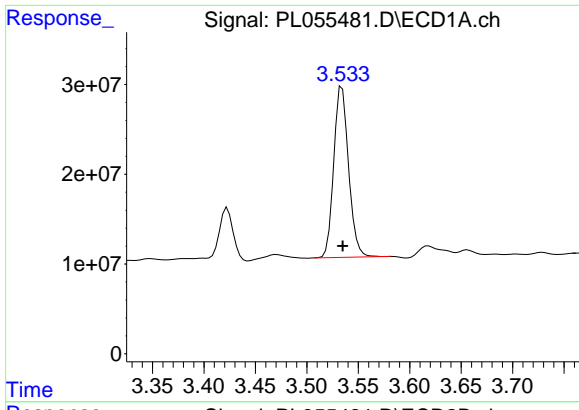
Data Path : Z:\pestpcbsrv\HPCHEM1\ECD\_L\Data\PL010220\  
 Data File : PL055481.D  
 Signal(s) : Signal #1: ECD1A.ch Signal #2: ECD2B.ch  
 Acq On : 02 Jan 2020 19:28  
 Operator : SG\AJ  
 Sample : K6482-10MSD  
 Misc :  
 ALS Vial : 22 Sample Multiplier: 1

Instrument :  
 ECD\_L  
 ClientSampled :

Integration File signal 1: autoint1.e  
 Integration File signal 2: autoint2.e  
 Quant Time: Jan 02 22:09:54 2020  
 Quant Method : Z:\pestpcbsrv\HPCHEM1\ECD\_L\methods\PL122119.M  
 Quant Title : GC Extractables  
 QLast Update : Sat Dec 21 05:21:06 2019  
 Response via : Initial Calibration  
 Integrator: ChemStation

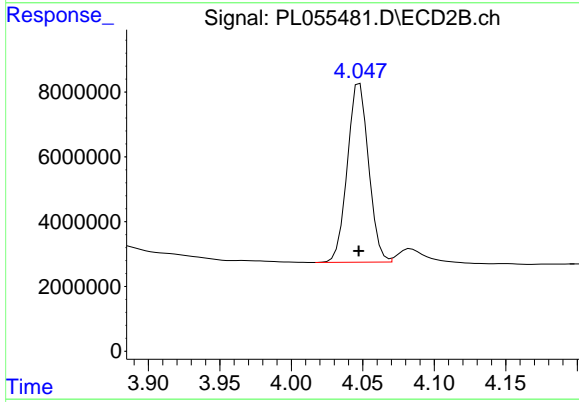
Volume Inj. : 1 µl  
 Signal #1 Phase : ZB-MR2 Signal #2 Phase: ZB-MR1  
 Signal #1 Info : 30M x 0.32mm x0.2 Signal #2 Info : 30M x 0.32mm x0.5µm



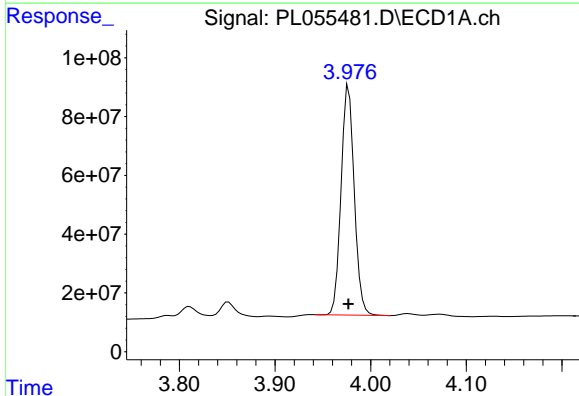


#1 Tetrachloro-m-xylene  
 R.T.: 3.534 min  
 Delta R.T.: 0.000 min  
 Response: 191027761  
 Conc: 18.16 ng/ml

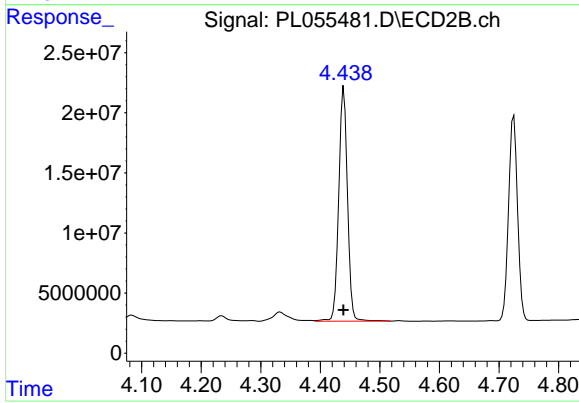
Instrument :  
 ECD\_L  
 ClientSampled :



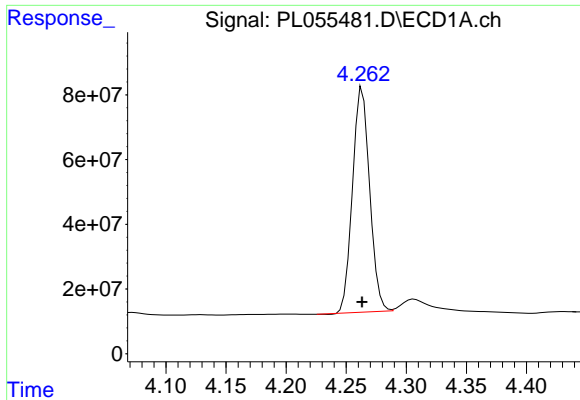
#1 Tetrachloro-m-xylene  
 R.T.: 4.048 min  
 Delta R.T.: 0.000 min  
 Response: 57050298  
 Conc: 21.59 ng/ml



#2 alpha-BHC  
 R.T.: 3.977 min  
 Delta R.T.: 0.000 min  
 Response: 750569565  
 Conc: 43.14 ng/ml



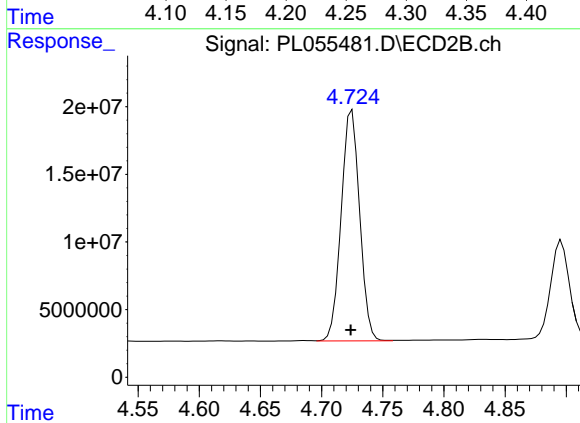
#2 alpha-BHC  
 R.T.: 4.440 min  
 Delta R.T.: 0.001 min  
 Response: 198875950  
 Conc: 54.00 ng/ml



#3 gamma-BHC (Lindane)

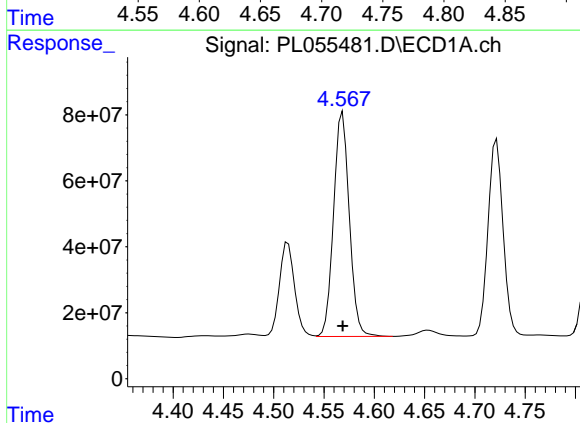
R.T.: 4.264 min  
Delta R.T.: 0.000 min  
Response: 689933287  
Conc: 41.84 ng/ml

Instrument :  
ECD\_L  
ClientSampleId :



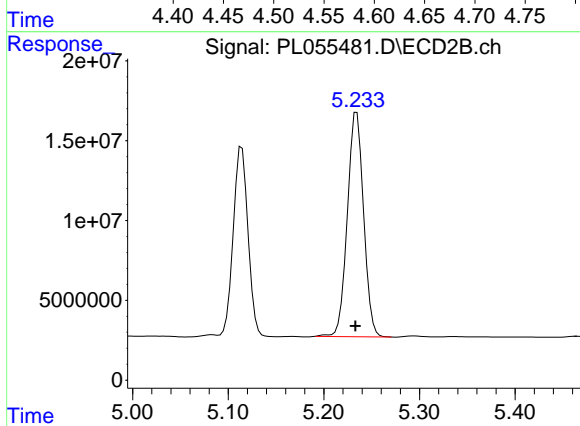
#3 gamma-BHC (Lindane)

R.T.: 4.725 min  
Delta R.T.: 0.001 min  
Response: 179263683  
Conc: 52.44 ng/ml



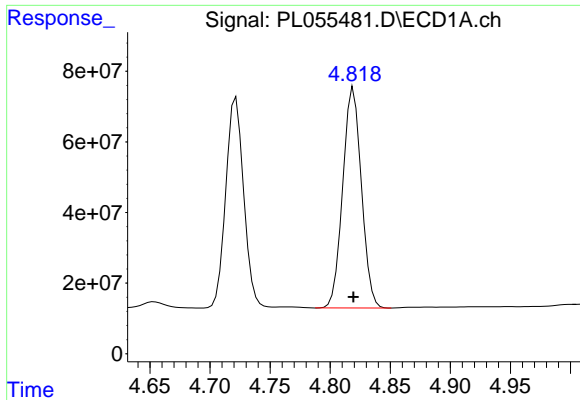
#4 Heptachlor

R.T.: 4.569 min  
Delta R.T.: 0.000 min  
Response: 738313180  
Conc: 45.22 ng/ml



#4 Heptachlor

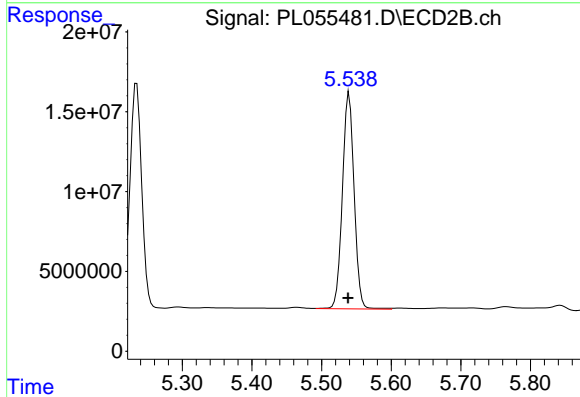
R.T.: 5.234 min  
Delta R.T.: 0.001 min  
Response: 166740313  
Conc: 53.00 ng/ml



#5 Aldrin

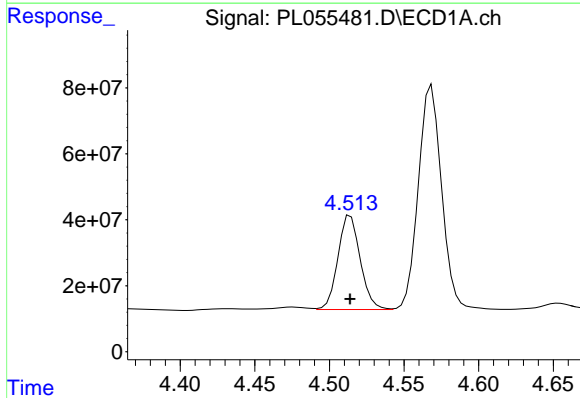
R.T.: 4.819 min  
 Delta R.T.: 0.000 min  
 Response: 676403724  
 Conc: 44.30 ng/ml

Instrument :  
 ECD\_L  
 ClientSampleId :



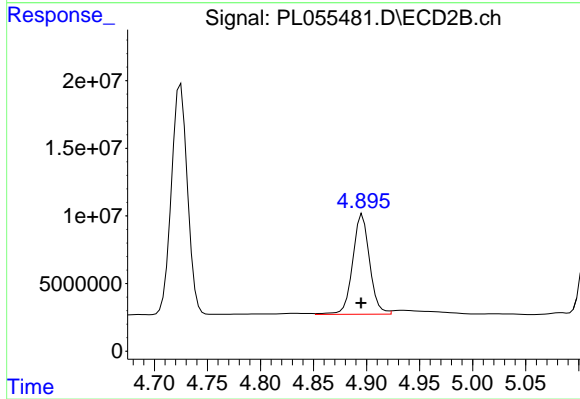
#5 Aldrin

R.T.: 5.540 min  
 Delta R.T.: 0.001 min  
 Response: 158641811  
 Conc: 55.09 ng/ml



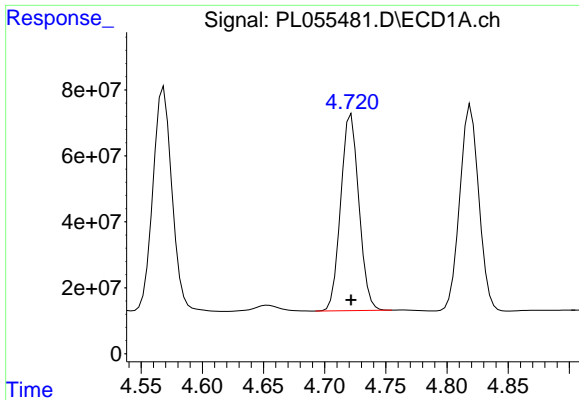
#6 beta-BHC

R.T.: 4.514 min  
 Delta R.T.: 0.000 min  
 Response: 297911808  
 Conc: 43.44 ng/ml



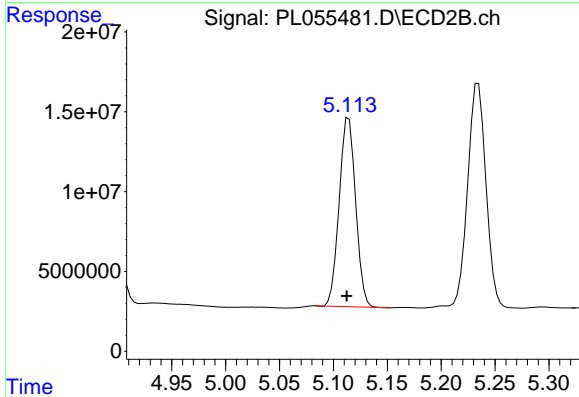
#6 beta-BHC

R.T.: 4.896 min  
 Delta R.T.: 0.001 min  
 Response: 82326561  
 Conc: 50.13 ng/ml

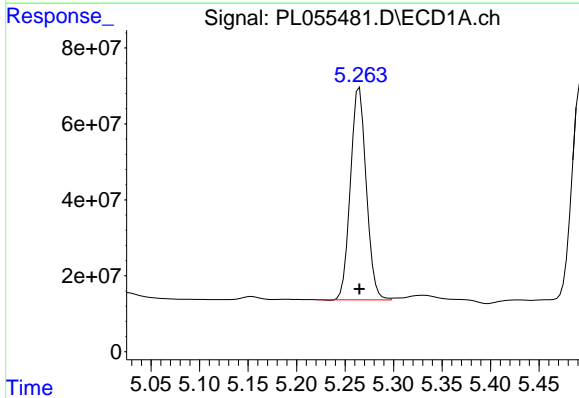


#7 delta-BHC  
 R.T.: 4.722 min  
 Delta R.T.: 0.000 min  
 Response: 615993868  
 Conc: 40.70 ng/ml

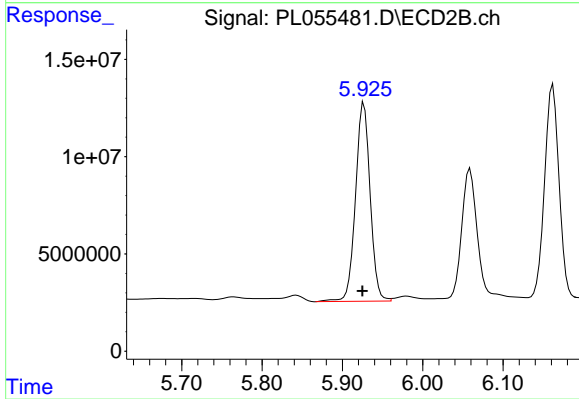
Instrument :  
 ECD\_L  
 ClientSampled :



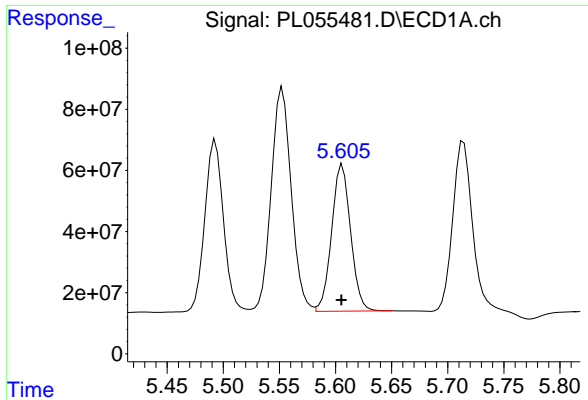
#7 delta-BHC  
 R.T.: 5.114 min  
 Delta R.T.: 0.002 min  
 Response: 125768168  
 Conc: 44.98 ng/ml



#8 Heptachlor epoxide  
 R.T.: 5.265 min  
 Delta R.T.: 0.000 min  
 Response: 634855658  
 Conc: 44.43 ng/ml

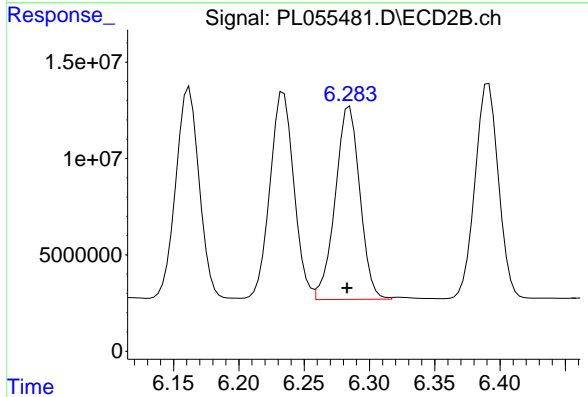


#8 Heptachlor epoxide  
 R.T.: 5.927 min  
 Delta R.T.: 0.002 min  
 Response: 129226069  
 Conc: 50.70 ng/ml

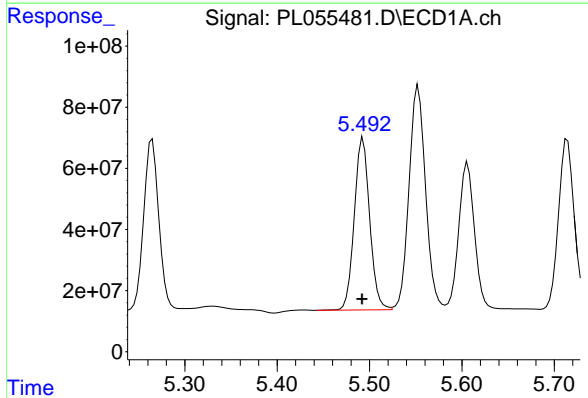


#9 Endosulfan I  
 R.T.: 5.606 min  
 Delta R.T.: 0.000 min  
 Response: 565128601  
 Conc: 42.77 ng/ml

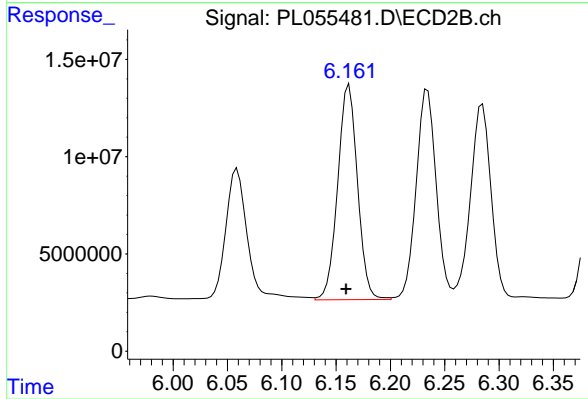
Instrument :  
 ECD\_L  
 ClientSampled :



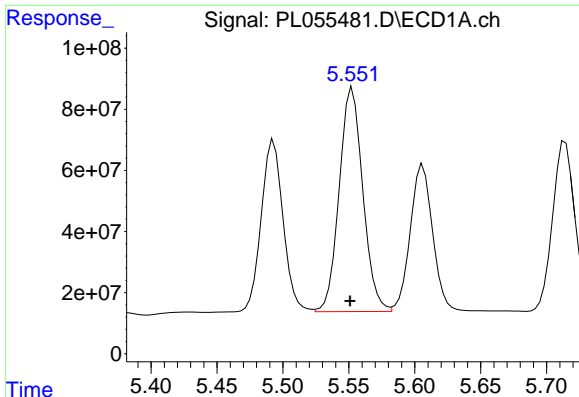
#9 Endosulfan I  
 R.T.: 6.285 min  
 Delta R.T.: 0.002 min  
 Response: 131618317  
 Conc: 53.14 ng/ml



#10 gamma-Chlordane  
 R.T.: 5.493 min  
 Delta R.T.: 0.000 min  
 Response: 651861996  
 Conc: 44.74 ng/ml



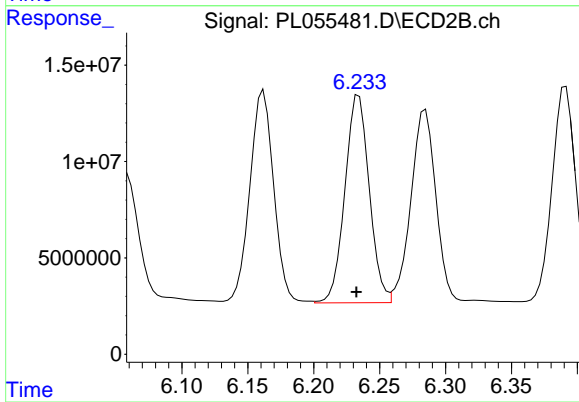
#10 gamma-Chlordane  
 R.T.: 6.162 min  
 Delta R.T.: 0.003 min  
 Response: 140245584  
 Conc: 52.84 ng/ml



#11 alpha-Chlordane

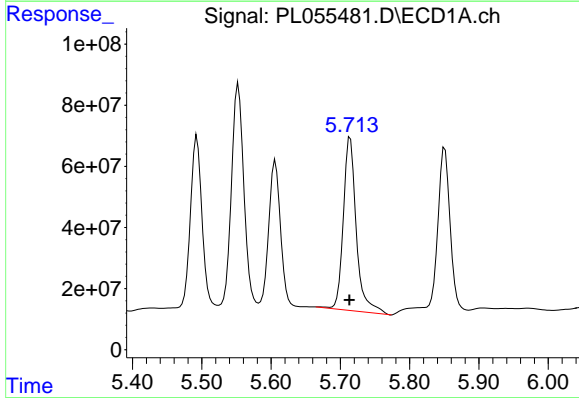
R.T.: 5.553 min  
 Delta R.T.: 0.002 min  
 Response: 912138558  
 Conc: 64.79 ng/ml

Instrument :  
 ECD\_L  
 ClientSampled :



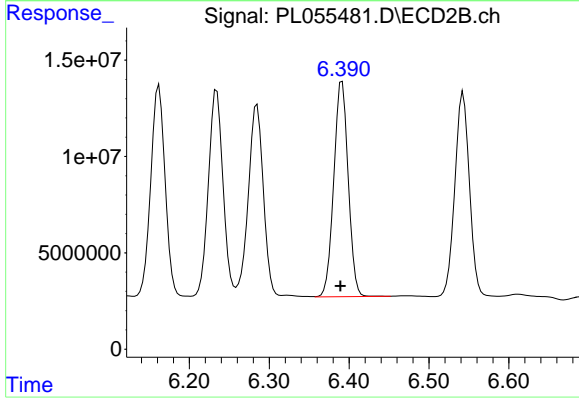
#11 alpha-Chlordane

R.T.: 6.234 min  
 Delta R.T.: 0.002 min  
 Response: 138503361  
 Conc: 52.82 ng/ml



#12 4,4'-DDE

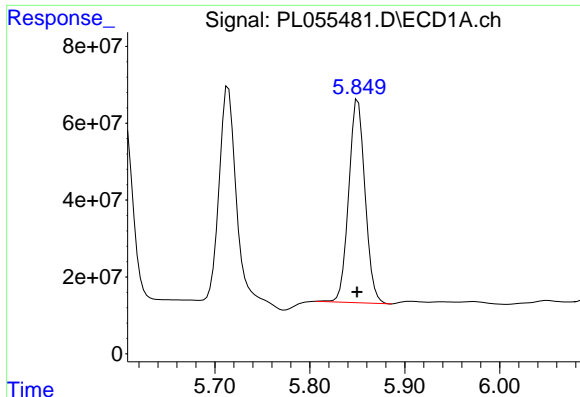
R.T.: 5.714 min  
 Delta R.T.: 0.000 min  
 Response: 739855039  
 Conc: 55.52 ng/ml



#12 4,4'-DDE

R.T.: 6.391 min  
 Delta R.T.: 0.002 min  
 Response: 139871050  
 Conc: 57.37 ng/ml

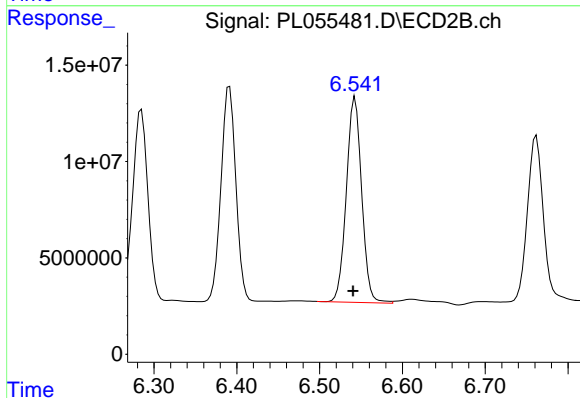




#13 Dieldrin

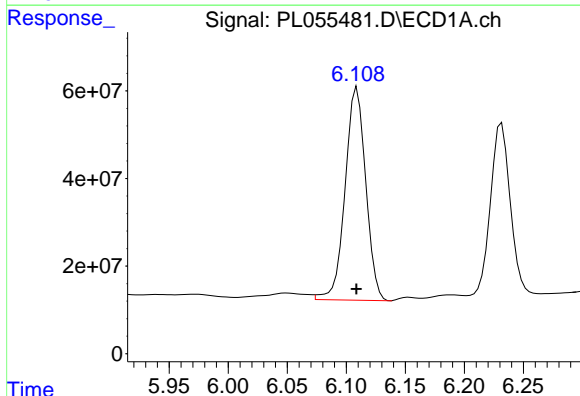
R.T.: 5.851 min  
 Delta R.T.: 0.000 min  
 Response: 632336867  
 Conc: 45.30 ng/ml

Instrument :  
 ECD\_L  
 ClientSampled :



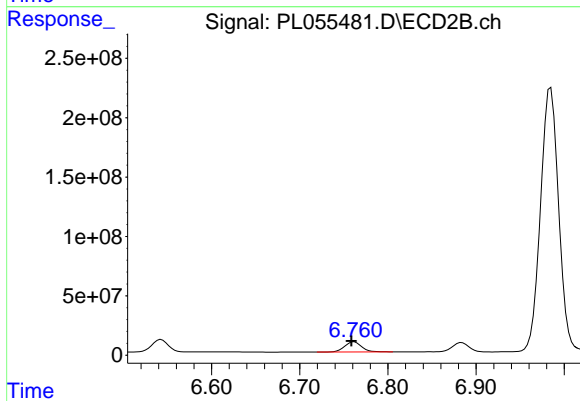
#13 Dieldrin

R.T.: 6.543 min  
 Delta R.T.: 0.003 min  
 Response: 137051133  
 Conc: 53.70 ng/ml



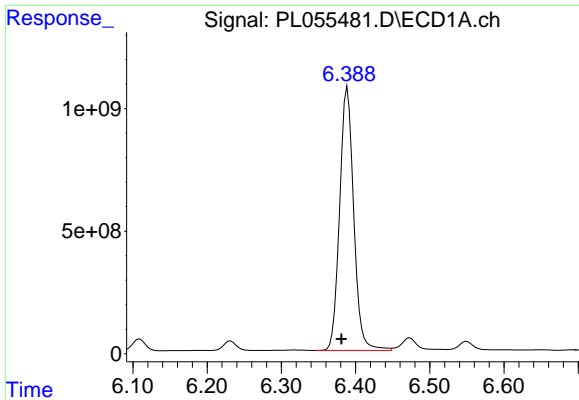
#14 Endrin

R.T.: 6.109 min  
 Delta R.T.: 0.000 min  
 Response: 590779547  
 Conc: 46.48 ng/ml



#14 Endrin

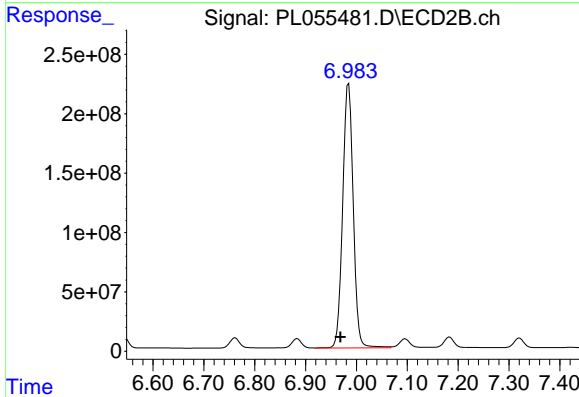
R.T.: 6.762 min  
 Delta R.T.: 0.003 min  
 Response: 114485204  
 Conc: 53.35 ng/ml



#15 Endosulfan II

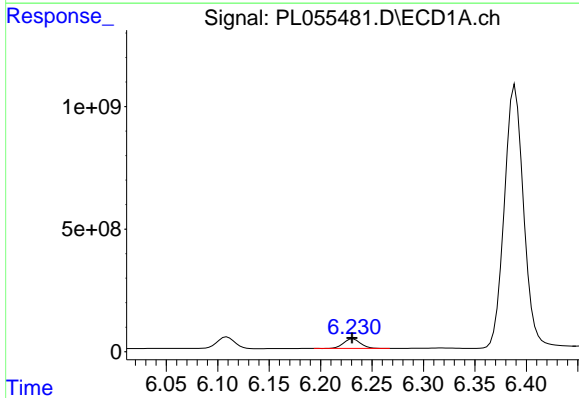
R.T.: 6.389 min  
 Delta R.T.: 0.008 min  
 Response: 14179255290  
 Conc: 1208.11 ng/ml

Instrument :  
 ECD\_L  
 ClientSampled :



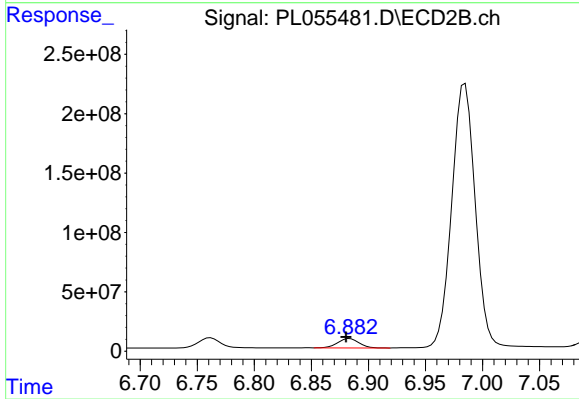
#15 Endosulfan II

R.T.: 6.985 min  
 Delta R.T.: 0.016 min  
 Response: 3218246702  
 Conc: 1357.50 ng/ml



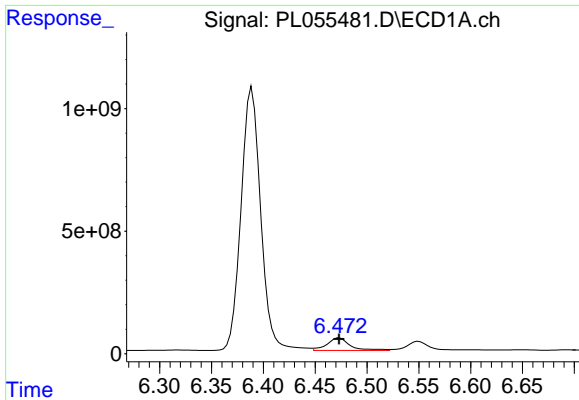
#16 4,4'-DDD

R.T.: 6.232 min  
 Delta R.T.: 0.001 min  
 Response: 449061079  
 Conc: 46.75 ng/ml



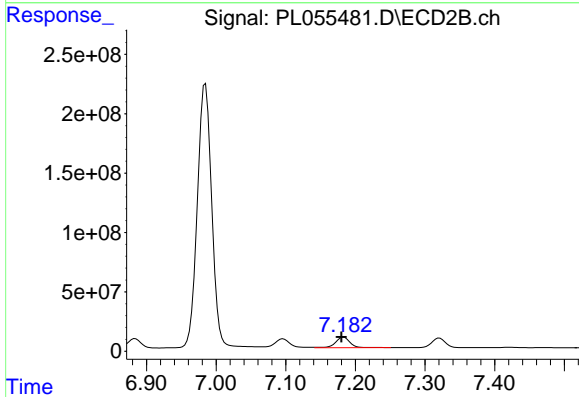
#16 4,4'-DDD

R.T.: 6.884 min  
 Delta R.T.: 0.003 min  
 Response: 102691113  
 Conc: 54.02 ng/ml

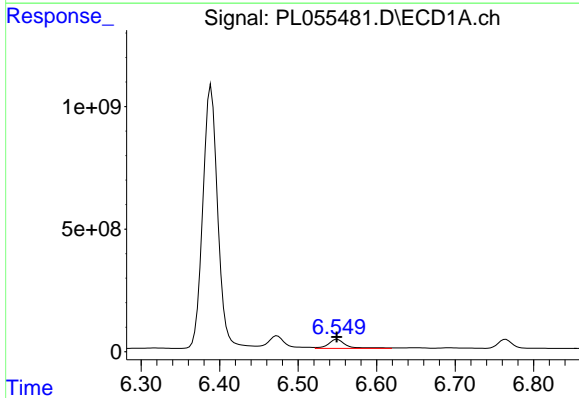


#17 4,4'-DDT  
 R.T.: 6.473 min  
 Delta R.T.: 0.000 min  
 Response: 789946245  
 Conc: 78.47 ng/ml

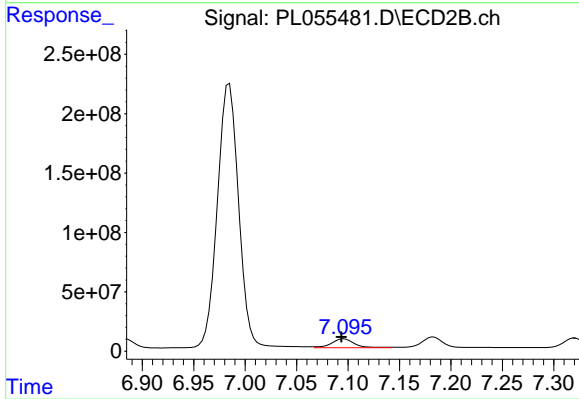
Instrument :  
 ECD\_L  
 ClientSampled :



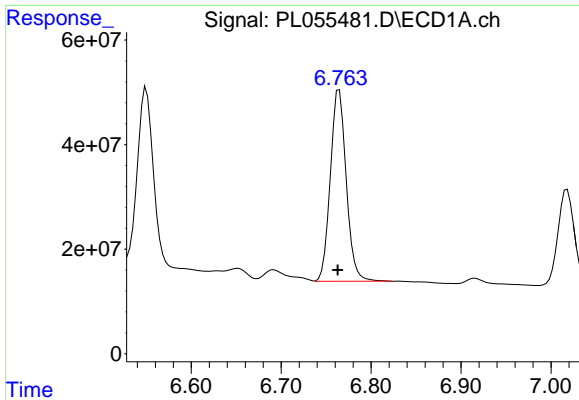
#17 4,4'-DDT  
 R.T.: 7.183 min  
 Delta R.T.: 0.003 min  
 Response: 128257408  
 Conc: 65.35 ng/ml



#18 Endrin aldehyde  
 R.T.: 6.550 min  
 Delta R.T.: 0.000 min  
 Response: 578785223  
 Conc: 59.43 ng/ml

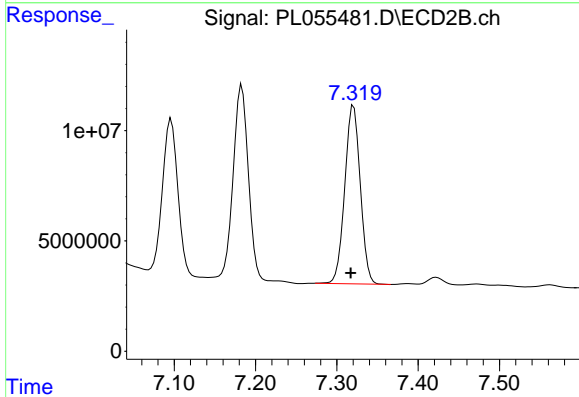


#18 Endrin aldehyde  
 R.T.: 7.096 min  
 Delta R.T.: 0.003 min  
 Response: 115764362  
 Conc: 59.98 ng/ml

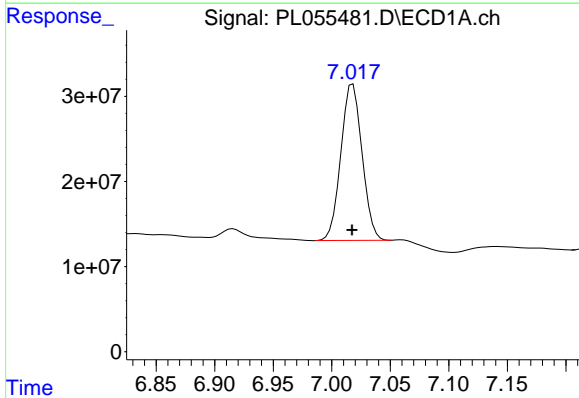


#19 Endosulfan Sulfate  
 R.T.: 6.765 min  
 Delta R.T.: 0.002 min  
 Response: 451250174  
 Conc: 44.86 ng/ml

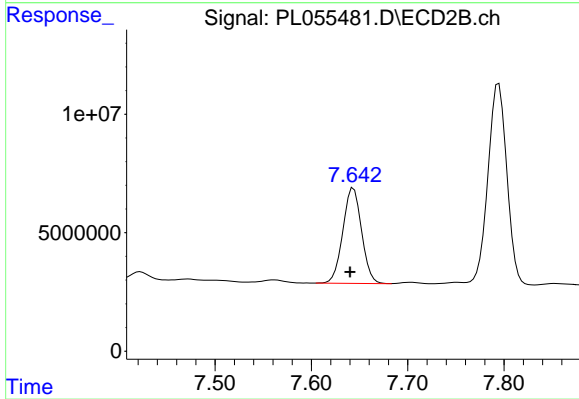
Instrument :  
 ECD\_L  
 ClientSampled :



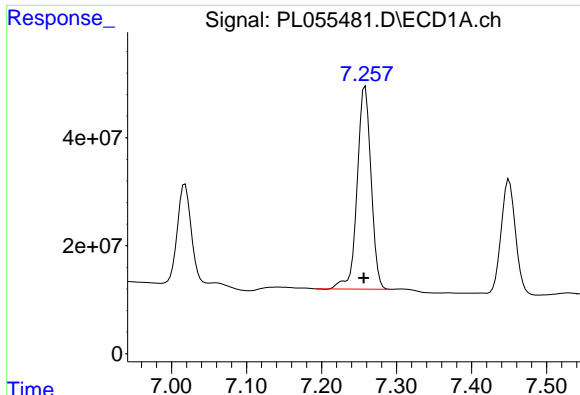
#19 Endosulfan Sulfate  
 R.T.: 7.321 min  
 Delta R.T.: 0.004 min  
 Response: 106986066  
 Conc: 51.22 ng/ml



#20 Methoxychlor  
 R.T.: 7.018 min  
 Delta R.T.: 0.000 min  
 Response: 231671548  
 Conc: 48.07 ng/ml



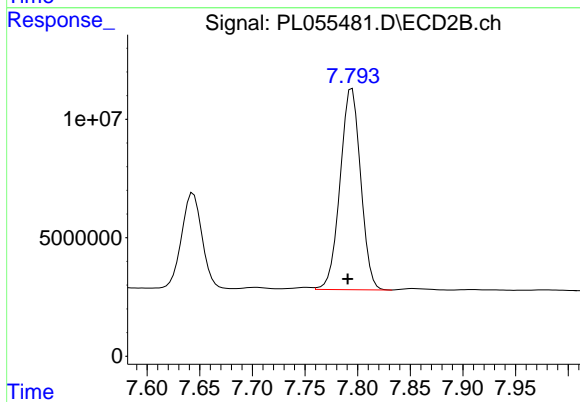
#20 Methoxychlor  
 R.T.: 7.644 min  
 Delta R.T.: 0.004 min  
 Response: 54209869  
 Conc: 50.23 ng/ml



#21 Endrin ketone

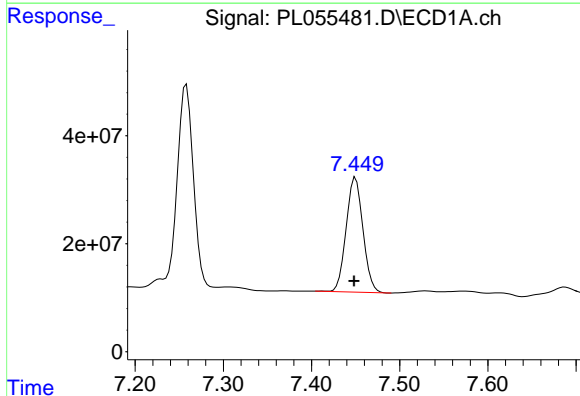
R.T.: 7.258 min  
 Delta R.T.: 0.002 min  
 Response: 484483044  
 Conc: 46.22 ng/ml

Instrument :  
 ECD\_L  
 ClientSampled :



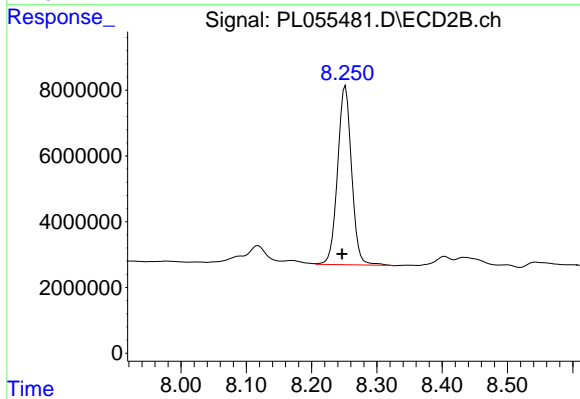
#21 Endrin ketone

R.T.: 7.795 min  
 Delta R.T.: 0.004 min  
 Response: 115602205  
 Conc: 51.91 ng/ml



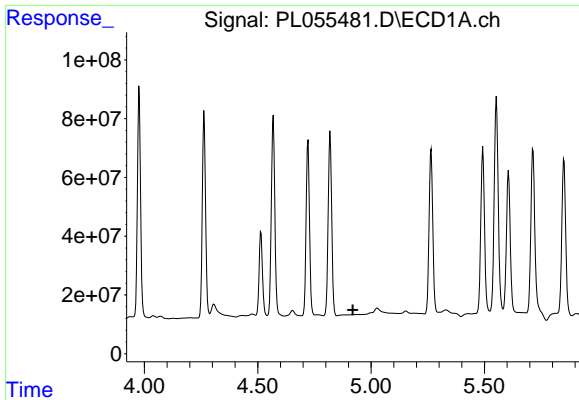
#22 Mirex

R.T.: 7.450 min  
 Delta R.T.: 0.002 min  
 Response: 281316360  
 Conc: 36.93 ng/ml



#22 Mirex

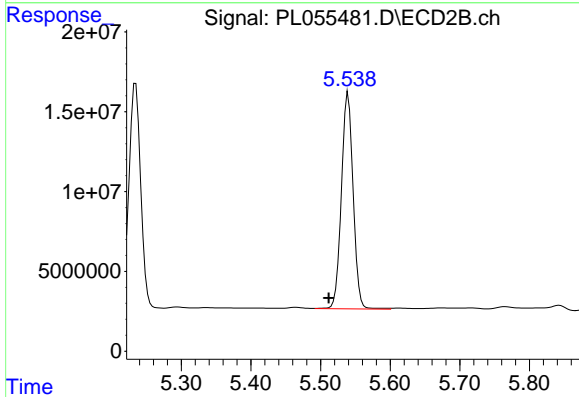
R.T.: 8.252 min  
 Delta R.T.: 0.005 min  
 Response: 81062460  
 Conc: 48.89 ng/ml



#24 Chlordane-2

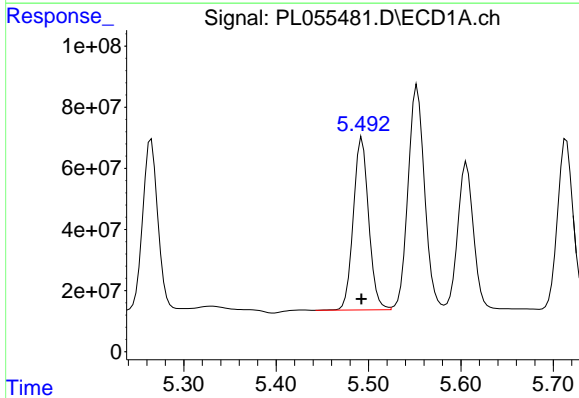
R.T.: 0.000 min  
 Exp R.T.: 4.919 min  
 Response: 0  
 Conc: N.D.

Instrument :  
 ECD\_L  
 ClientSampled :



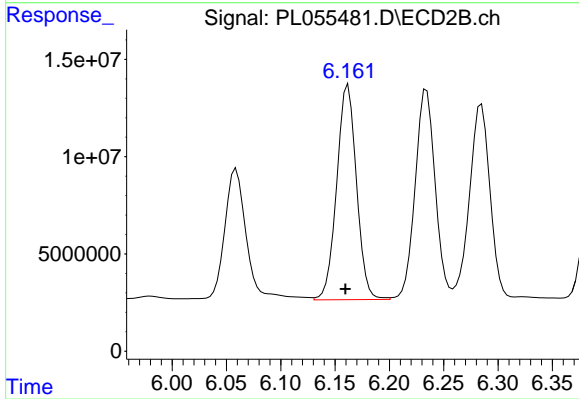
#24 Chlordane-2

R.T.: 5.540 min  
 Delta R.T.: 0.028 min  
 Response: 158641811  
 Conc: 1666.60 ng/ml



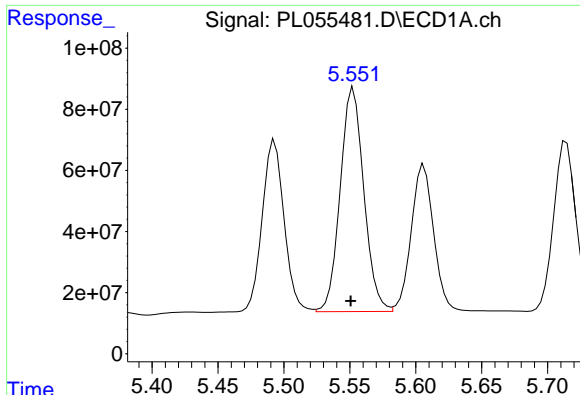
#25 Chlordane-3

R.T.: 5.493 min  
 Delta R.T.: 0.000 min  
 Response: 651861996  
 Conc: 514.30 ng/ml



#25 Chlordane-3

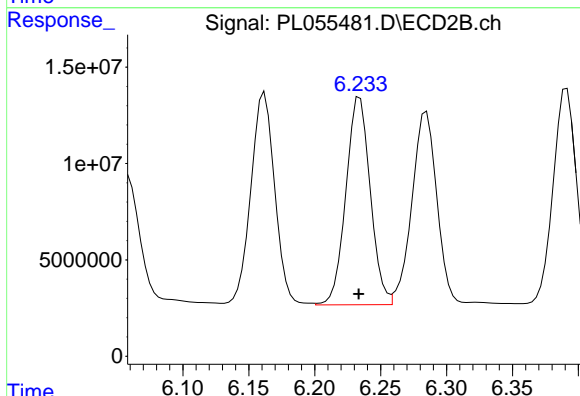
R.T.: 6.162 min  
 Delta R.T.: 0.002 min  
 Response: 140245584  
 Conc: 435.80 ng/ml



#26 Chlordane-4

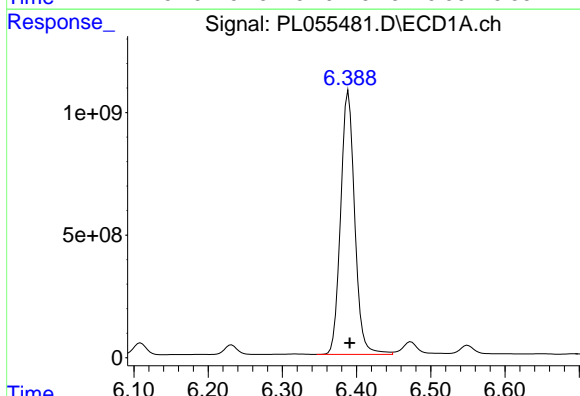
R.T.: 5.553 min  
 Delta R.T.: 0.002 min  
 Response: 912138558  
 Conc: 871.41 ng/ml

Instrument :  
 ECD\_L  
 ClientSampled :



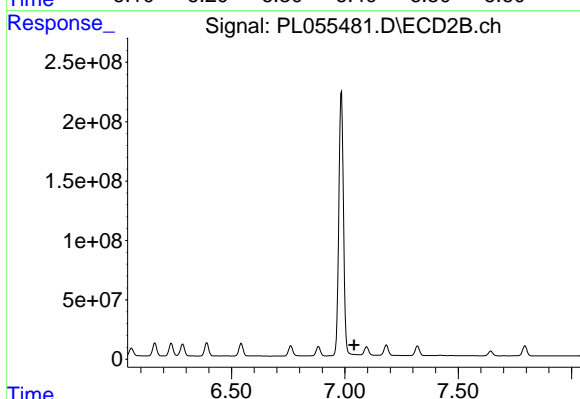
#26 Chlordane-4

R.T.: 6.234 min  
 Delta R.T.: 0.000 min  
 Response: 138503361  
 Conc: 360.33 ng/ml



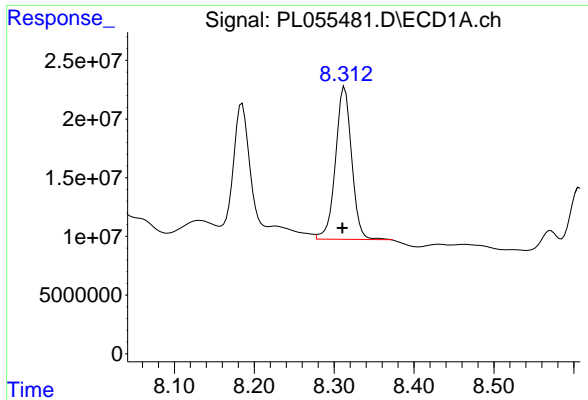
#27 Chlordane-5

R.T.: 6.389 min  
 Delta R.T.: -0.002 min  
 Response: 14179255290  
 Conc: 36388.02 ng/ml



#27 Chlordane-5

R.T.: 0.000 min  
 Exp R.T.: 7.041 min  
 Response: 0  
 Conc: N.D.



#28 Decachlorobiphenyl

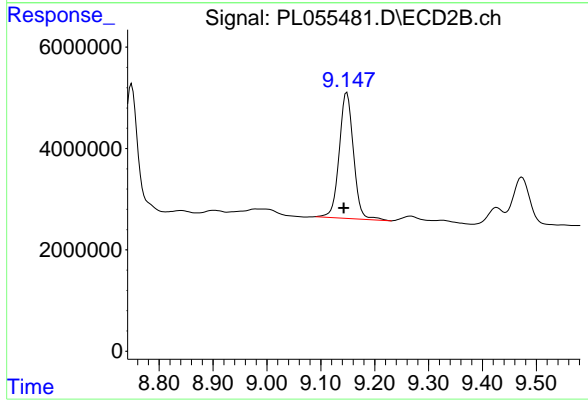
R.T.: 8.313 min

Delta R.T.: 0.003 min

Response: 181666522

Conc: 19.58 ng/ml

Instrument :  
ECD\_L  
ClientSampleId :



#28 Decachlorobiphenyl

R.T.: 9.148 min

Delta R.T.: 0.006 min

Response: 45536606

Conc: 20.63 ng/ml