

Data Path : Z:\pestpcbsrv\HPCHEM1\ECD\_L\Data\PL010320\  
 Data File : PL055499.D  
 Signal(s) : Signal #1: ECD1A.ch Signal #2: ECD2B.ch  
 Acq On : 03 Jan 2020 18:58  
 Operator : AJ\MA  
 Sample : PSTDICC025  
 Misc :  
 ALS Vial : 8 Sample Multiplier: 1

Instrument :  
 ECD\_L  
 ClientSampleId :  
 PSTDICC025

Integration File signal 1: autoint1.e  
 Integration File signal 2: autoint2.e  
 Quant Time: Jan 04 00:15:20 2020  
 Quant Method : Z:\pestpcbsrv\HPCHEM1\ECD\_L\methods\PL010320.M  
 Quant Title : GC Extractables  
 QLast Update : Sat Jan 04 00:13:56 2020  
 Response via : Initial Calibration  
 Integrator: ChemStation

Volume Inj. : 1 µl  
 Signal #1 Phase : ZB-MR2 Signal #2 Phase: ZB-MR1  
 Signal #1 Info : 30M x 0.32mm x0.2 Signal #2 Info : 30M x 0.32mm x0.5µm

	Compound	RT#1	RT#2	Resp#1	Resp#2	ng/ml	ng/ml
-----							
System Monitoring Compounds							
1)	SA Tetrachlo...	3.501	4.012	239.1E6	69694103	25.561	25.310
28)	SA Decachlor...	8.266	9.083	212.5E6	55139948	25.222	25.376
Target Compounds							
2)	A alpha-BHC	3.941	4.402	394.2E6	102.6E6	25.583	24.334
3)	MA gamma-BHC...	4.226	4.686	367.4E6	95879501	25.086	24.712
4)	MA Heptachlor	4.529	5.192	359.5E6	87880706	24.922	25.238
5)	MB Aldrin	4.778	5.496	349.7E6	76828738	25.261	24.123
6)	B beta-BHC	4.476	4.857	148.2E6	43016123	25.498	26.322
7)	B delta-BHC	4.682	5.073	343.5E6	71725437	24.650	25.044
8)	B Heptachlo...	5.222	5.881	314.3E6	60408649	25.461	24.741
9)	A Endosulfan I	5.562	6.238	292.3E6	67499416	24.811	25.404
10)	B gamma-Chl...	5.449	6.116	312.0E6	68817352	24.668	24.664
11)	B alpha-Chl...	5.508	6.188	306.6E6	71252355	24.355	25.516
12)	B 4,4'-DDE	5.671	6.345	283.1E6	66091262	24.732	24.733
13)	MA Dieldrin	5.806	6.495	304.4E6	68240957	24.466	24.911
14)	MA Endrin	6.063	6.713	277.9E6	58772886	24.418	24.815
15)	B Endosulfa...	6.336	6.923	255.4E6	63901880	34.411	26.062
16)	A 4,4'-DDD	6.187	6.836	199.3E6	52511929	23.845	24.919
17)	MA 4,4'-DDT	6.428	7.136	199.5E6	56976029	21.923	25.343
18)	B Endrin al...	6.504	7.048	210.5E6	51798775	24.470	26.058
19)	B Endosulfa...	6.718	7.272	227.4E6	56629037	34.383	25.695 #
20)	A Methoxychlor	6.974	7.596	110.9E6	30231960	24.365	25.634
21)	B Endrin ke...	7.210	7.744	271.4E6	59788779	25.626	25.356
22)	Mirex	7.400	8.199	173.3E6	44498102	39.450	27.278 #
-----							

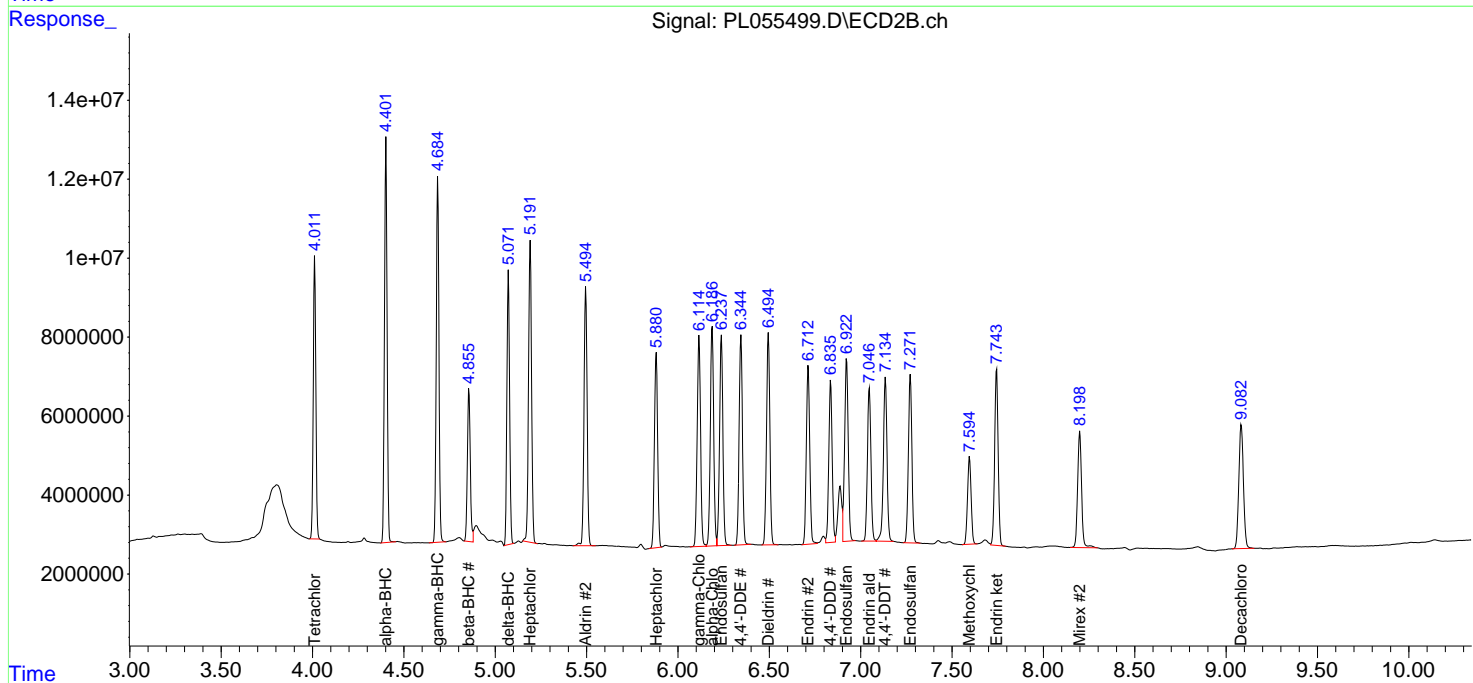
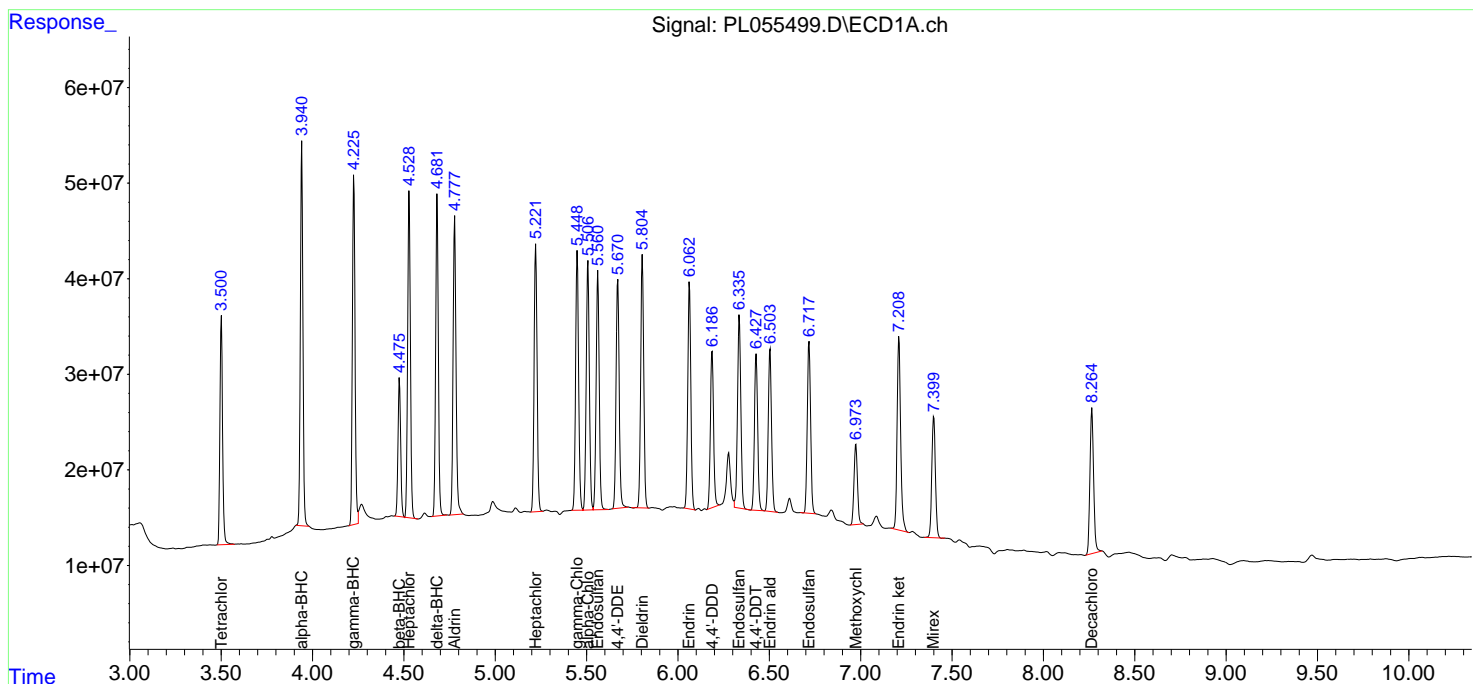
(f)=RT Delta > 1/2 Window (#)=Amounts differ by > 25% (m)=manual int.

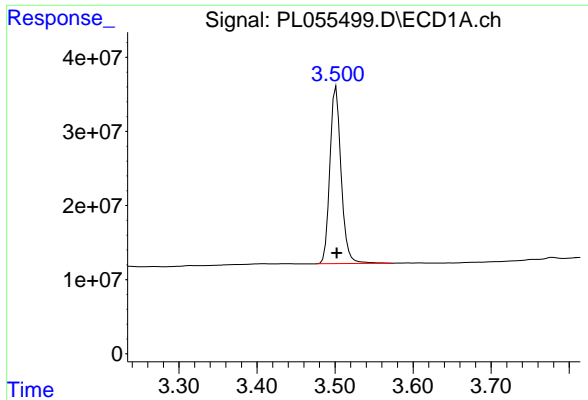
Data Path : Z:\pestpcbsrv\HPCHEM1\ECD\_L\Data\PL010320\  
 Data File : PL055499.D  
 Signal(s) : Signal #1: ECD1A.ch Signal #2: ECD2B.ch  
 Acq On : 03 Jan 2020 18:58  
 Operator : AJ\MA  
 Sample : PSTDICC025  
 Misc :  
 ALS Vial : 8 Sample Multiplier: 1

Instrument :  
 ECD\_L  
 Client Sampled :  
 PSTDICC025

Integration File signal 1: autoint1.e  
 Integration File signal 2: autoint2.e  
 Quant Time: Jan 04 00:15:20 2020  
 Quant Method : Z:\pestpcbsrv\HPCHEM1\ECD\_L\methods\PL010320.M  
 Quant Title : GC Extractables  
 QLast Update : Sat Jan 04 00:13:56 2020  
 Response via : Initial Calibration  
 Integrator: ChemStation

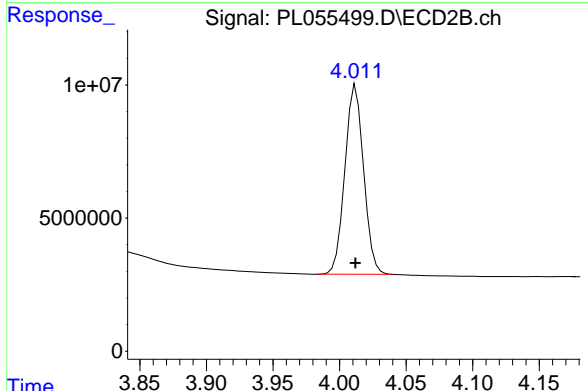
Volume Inj. : 1 µl  
 Signal #1 Phase : ZB-MR2 Signal #2 Phase: ZB-MR1  
 Signal #1 Info : 30M x 0.32mm x0.2 Signal #2 Info : 30M x 0.32mm x0.5µm



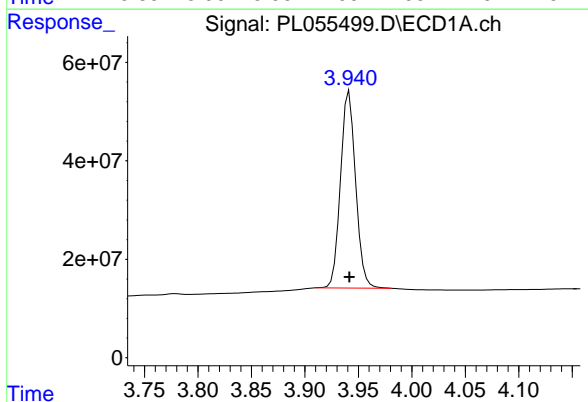


#1 Tetrachloro-m-xylene  
 R.T.: 3.501 min  
 Delta R.T.: 0.000 min  
 Response: 239096537  
 Conc: 25.56 ng/ml

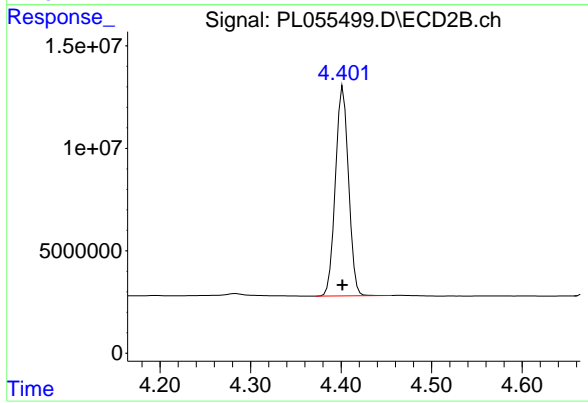
Instrument :  
 ECD\_L  
 ClientSampleId :  
 PSTDICC025



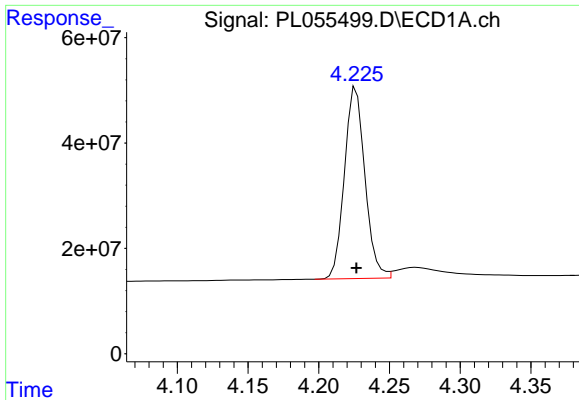
#1 Tetrachloro-m-xylene  
 R.T.: 4.012 min  
 Delta R.T.: 0.000 min  
 Response: 69694103  
 Conc: 25.31 ng/ml



#2 alpha-BHC  
 R.T.: 3.941 min  
 Delta R.T.: 0.000 min  
 Response: 394194456  
 Conc: 25.58 ng/ml

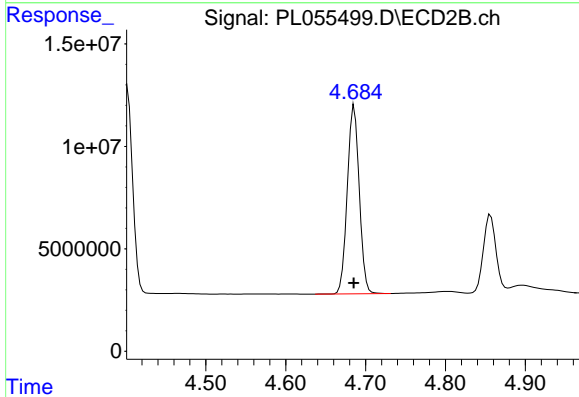


#2 alpha-BHC  
 R.T.: 4.402 min  
 Delta R.T.: 0.000 min  
 Response: 102646435  
 Conc: 24.33 ng/ml

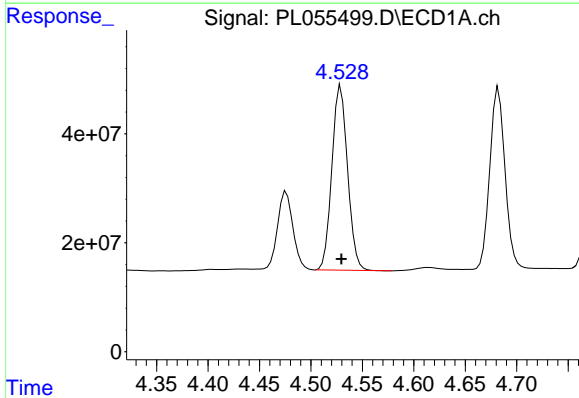


#3 gamma-BHC (Lindane)  
 R.T.: 4.226 min  
 Delta R.T.: 0.000 min  
 Response: 367371985  
 Conc: 25.09 ng/ml

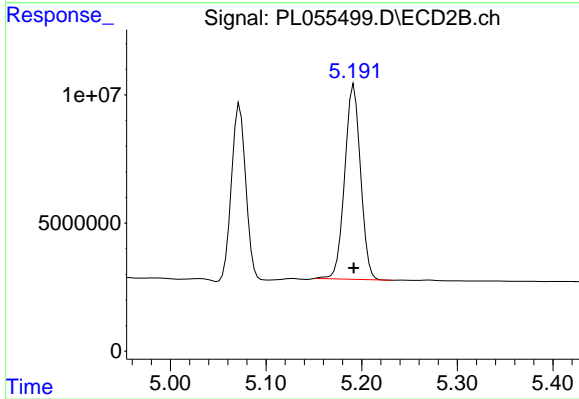
Instrument :  
 ECD\_L  
 ClientSampled :  
 PSTDICC025



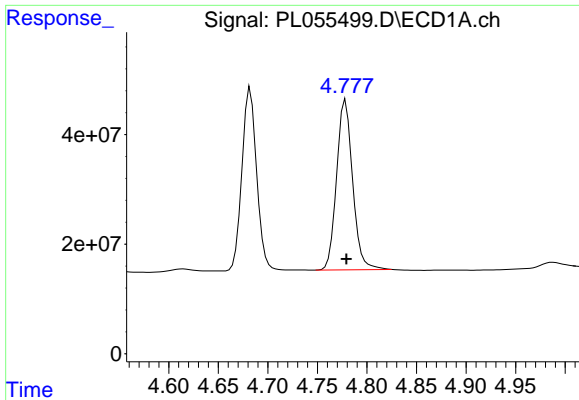
#3 gamma-BHC (Lindane)  
 R.T.: 4.686 min  
 Delta R.T.: 0.000 min  
 Response: 95879501  
 Conc: 24.71 ng/ml



#4 Heptachlor  
 R.T.: 4.529 min  
 Delta R.T.: 0.000 min  
 Response: 359506228  
 Conc: 24.92 ng/ml



#4 Heptachlor  
 R.T.: 5.192 min  
 Delta R.T.: 0.000 min  
 Response: 87880706  
 Conc: 25.24 ng/ml



#5 Aldrin

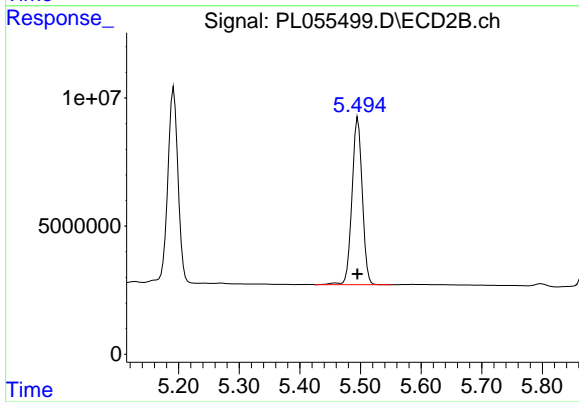
R.T.: 4.778 min

Delta R.T.: 0.000 min

Response: 349745877

Conc: 25.26 ng/ml

Instrument :  
ECD\_L  
ClientSampled :  
PSTDICC025



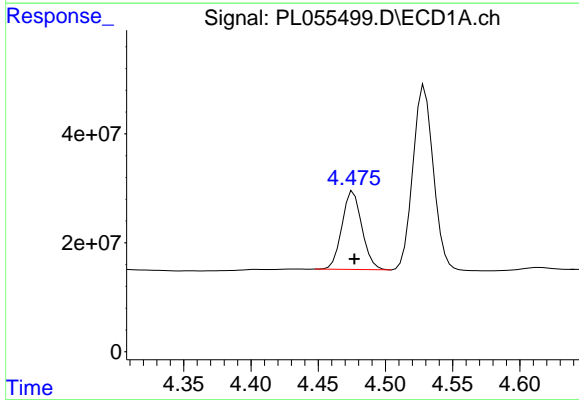
#5 Aldrin

R.T.: 5.496 min

Delta R.T.: 0.000 min

Response: 76828738

Conc: 24.12 ng/ml



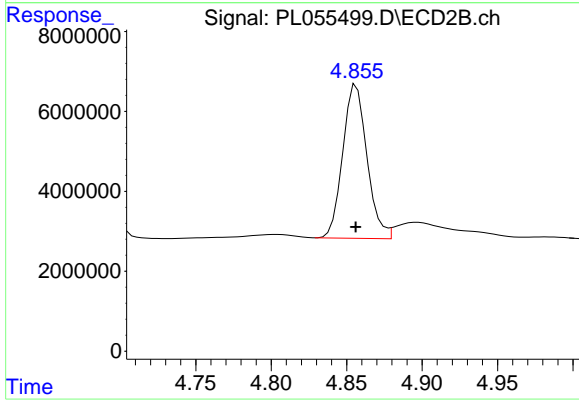
#6 beta-BHC

R.T.: 4.476 min

Delta R.T.: 0.000 min

Response: 148242765

Conc: 25.50 ng/ml



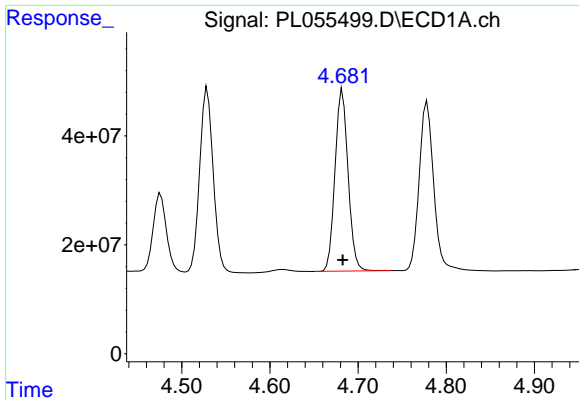
#6 beta-BHC

R.T.: 4.857 min

Delta R.T.: 0.000 min

Response: 43016123

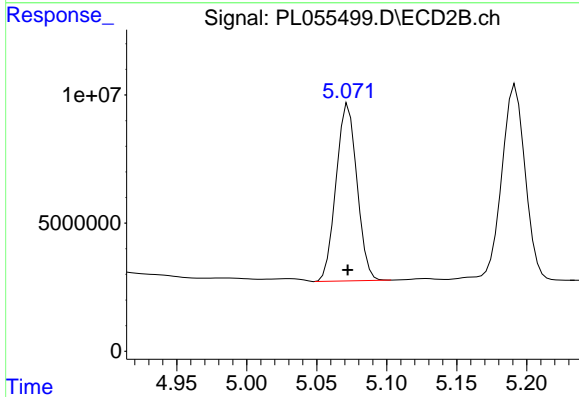
Conc: 26.32 ng/ml



#7 delta-BHC

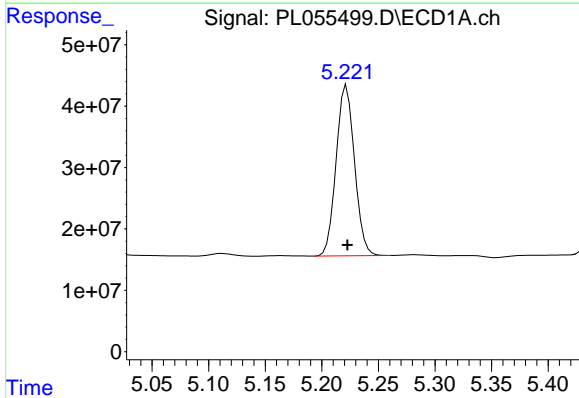
R.T.: 4.682 min  
 Delta R.T.: 0.000 min  
 Response: 343532915  
 Conc: 24.65 ng/ml

Instrument :  
 ECD\_L  
 ClientSampleId :  
 PSTDICC025



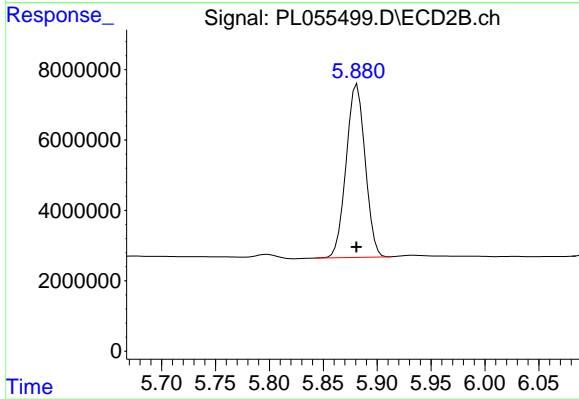
#7 delta-BHC

R.T.: 5.073 min  
 Delta R.T.: 0.000 min  
 Response: 71725437  
 Conc: 25.04 ng/ml



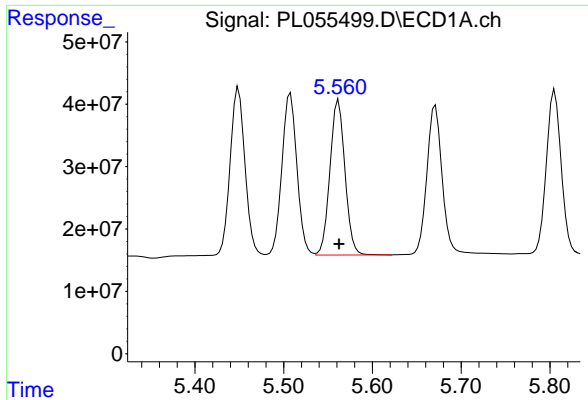
#8 Heptachlor epoxide

R.T.: 5.222 min  
 Delta R.T.: 0.000 min  
 Response: 314321475  
 Conc: 25.46 ng/ml



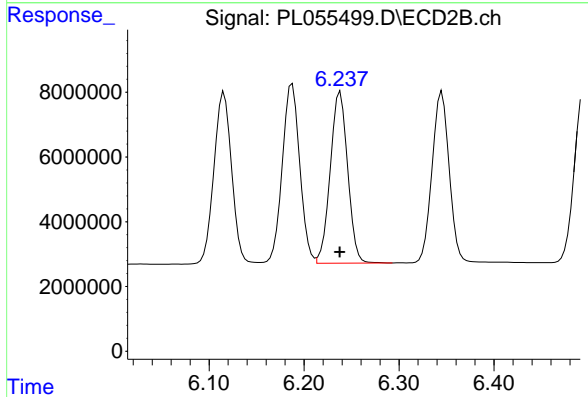
#8 Heptachlor epoxide

R.T.: 5.881 min  
 Delta R.T.: 0.000 min  
 Response: 60408649  
 Conc: 24.74 ng/ml

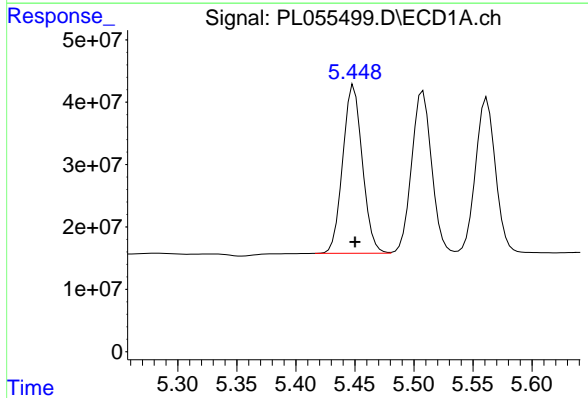


#9 Endosulfan I  
 R.T.: 5.562 min  
 Delta R.T.: 0.000 min  
 Response: 292261767  
 Conc: 24.81 ng/ml

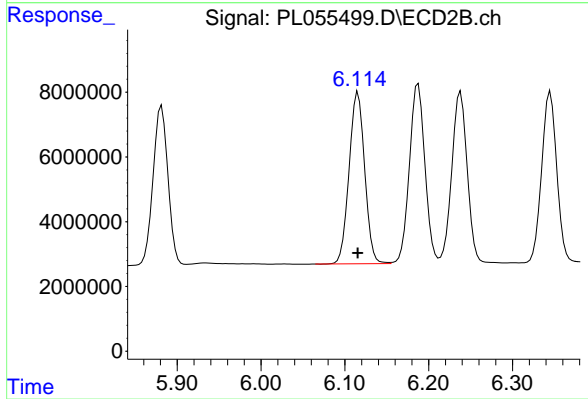
Instrument :  
 ECD\_L  
 ClientSampleId :  
 PSTDICC025



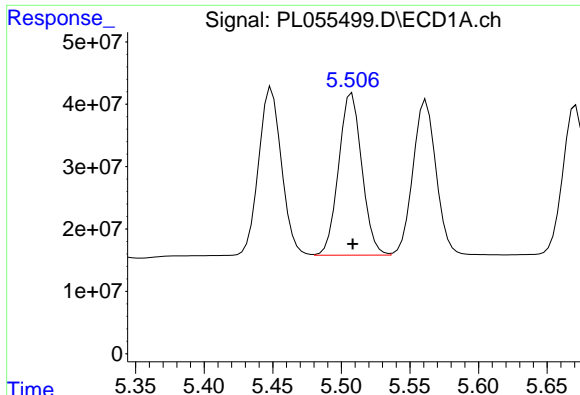
#9 Endosulfan I  
 R.T.: 6.238 min  
 Delta R.T.: 0.000 min  
 Response: 67499416  
 Conc: 25.40 ng/ml



#10 gamma-Chlordane  
 R.T.: 5.449 min  
 Delta R.T.: 0.000 min  
 Response: 312002581  
 Conc: 24.67 ng/ml



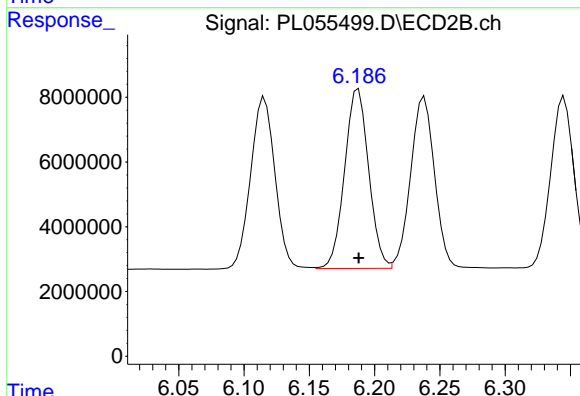
#10 gamma-Chlordane  
 R.T.: 6.116 min  
 Delta R.T.: 0.000 min  
 Response: 68817352  
 Conc: 24.66 ng/ml



#11 alpha-Chlordane

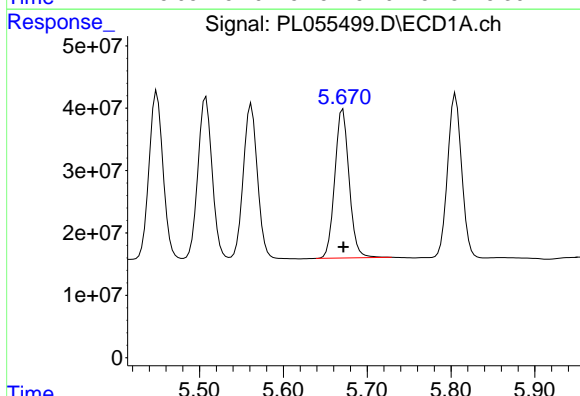
R.T.: 5.508 min  
 Delta R.T.: 0.000 min  
 Response: 306629948  
 Conc: 24.35 ng/ml

Instrument :  
 ECD\_L  
 ClientSampled :  
 PSTDICC025



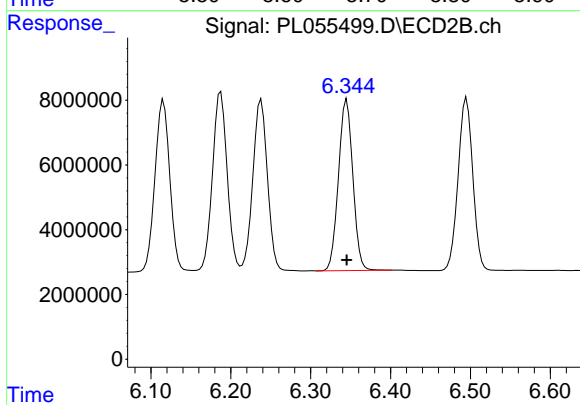
#11 alpha-Chlordane

R.T.: 6.188 min  
 Delta R.T.: 0.000 min  
 Response: 71252355  
 Conc: 25.52 ng/ml



#12 4,4'-DDE

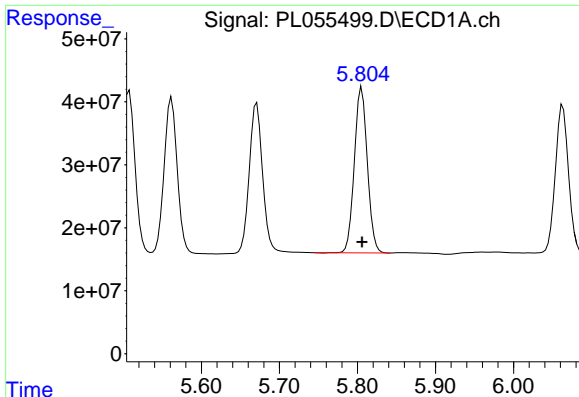
R.T.: 5.671 min  
 Delta R.T.: 0.000 min  
 Response: 283133078  
 Conc: 24.73 ng/ml



#12 4,4'-DDE

R.T.: 6.345 min  
 Delta R.T.: 0.000 min  
 Response: 66091262  
 Conc: 24.73 ng/ml

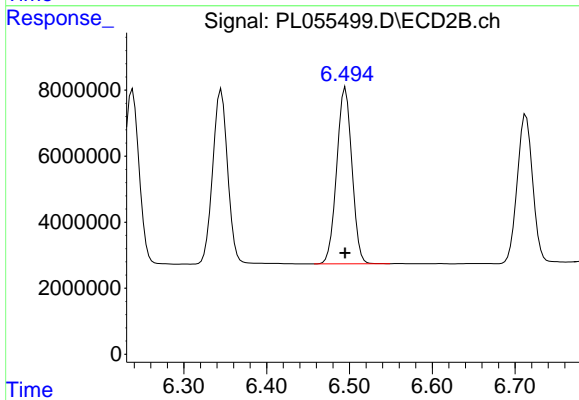




#13 Dieldrin

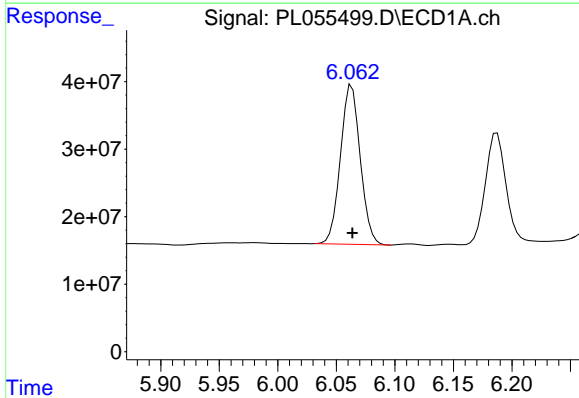
R.T.: 5.806 min  
 Delta R.T.: 0.000 min  
 Response: 304439572  
 Conc: 24.47 ng/ml

Instrument :  
 ECD\_L  
 ClientSampleId :  
 PSTDICC025



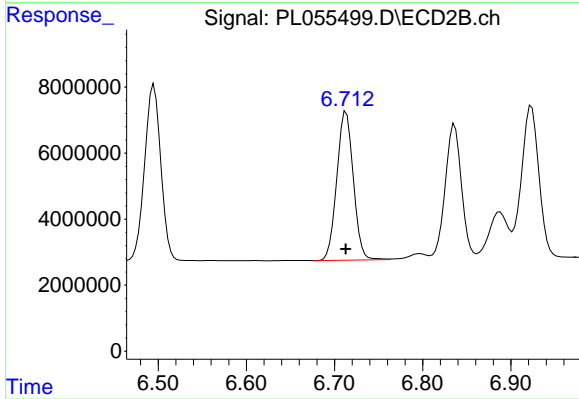
#13 Dieldrin

R.T.: 6.495 min  
 Delta R.T.: 0.000 min  
 Response: 68240957  
 Conc: 24.91 ng/ml



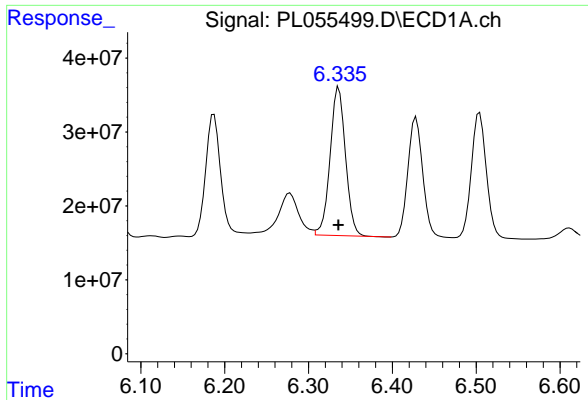
#14 Endrin

R.T.: 6.063 min  
 Delta R.T.: 0.000 min  
 Response: 277900110  
 Conc: 24.42 ng/ml



#14 Endrin

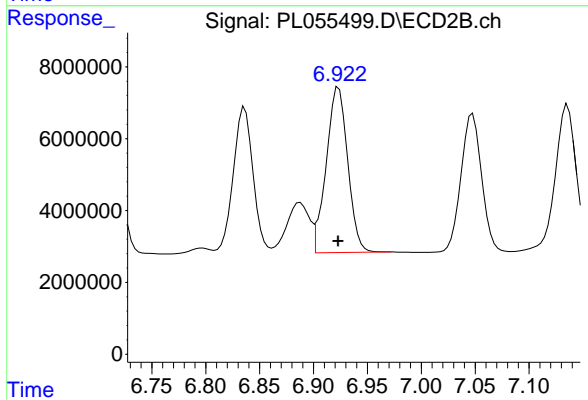
R.T.: 6.713 min  
 Delta R.T.: 0.000 min  
 Response: 58772886  
 Conc: 24.81 ng/ml



#15 Endosulfan II

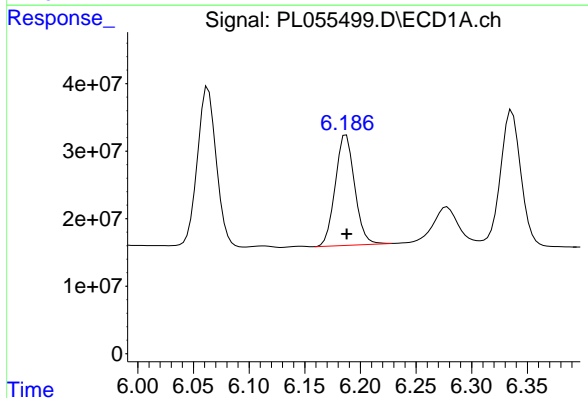
R.T.: 6.336 min  
 Delta R.T.: 0.000 min  
 Response: 255434906  
 Conc: 34.41 ng/ml

Instrument :  
 ECD\_L  
 ClientSampleId :  
 PSTDICC025



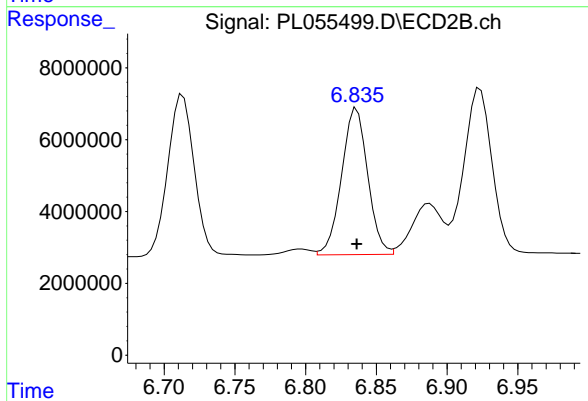
#15 Endosulfan II

R.T.: 6.923 min  
 Delta R.T.: 0.000 min  
 Response: 63901880  
 Conc: 26.06 ng/ml



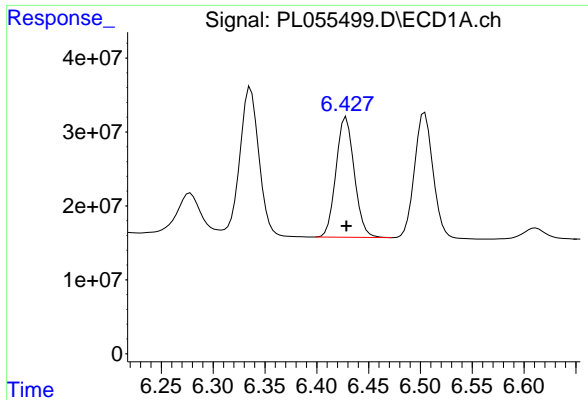
#16 4,4'-DDD

R.T.: 6.187 min  
 Delta R.T.: 0.000 min  
 Response: 199295293  
 Conc: 23.85 ng/ml



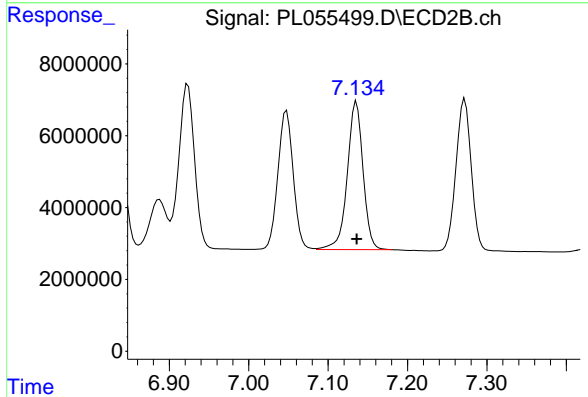
#16 4,4'-DDD

R.T.: 6.836 min  
 Delta R.T.: 0.000 min  
 Response: 52511929  
 Conc: 24.92 ng/ml

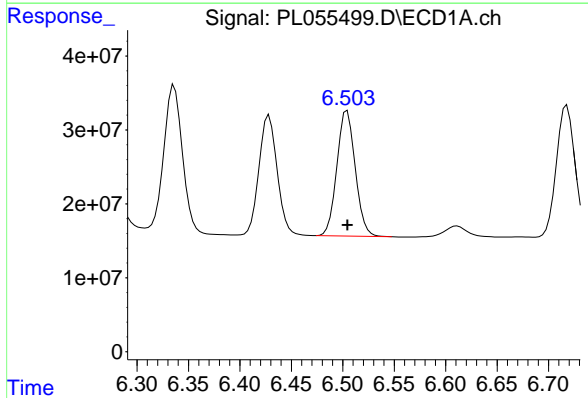


#17 4,4'-DDT  
 R.T.: 6.428 min  
 Delta R.T.: 0.000 min  
 Response: 199539640  
 Conc: 21.92 ng/ml

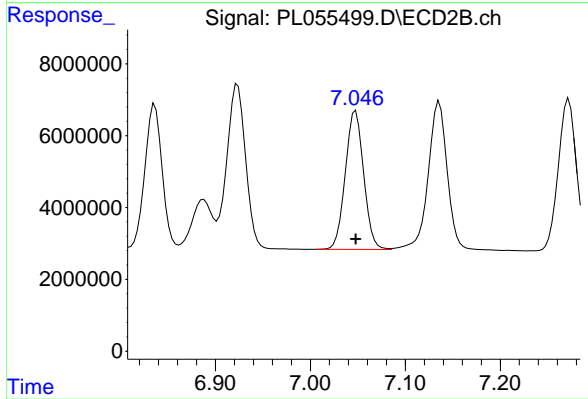
Instrument :  
 ECD\_L  
 ClientSampled :  
 PSTDICC025



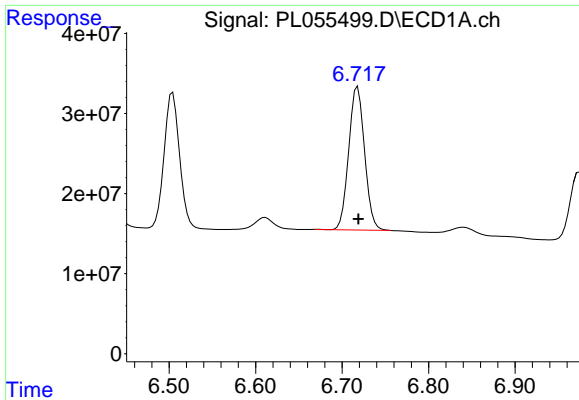
#17 4,4'-DDT  
 R.T.: 7.136 min  
 Delta R.T.: 0.000 min  
 Response: 56976029  
 Conc: 25.34 ng/ml



#18 Endrin aldehyde  
 R.T.: 6.504 min  
 Delta R.T.: 0.000 min  
 Response: 210467235  
 Conc: 24.47 ng/ml

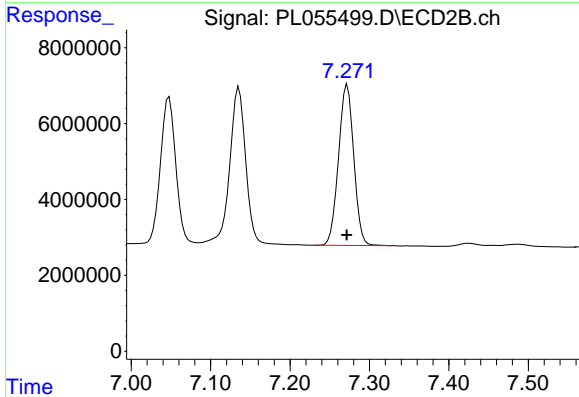


#18 Endrin aldehyde  
 R.T.: 7.048 min  
 Delta R.T.: 0.000 min  
 Response: 51798775  
 Conc: 26.06 ng/ml

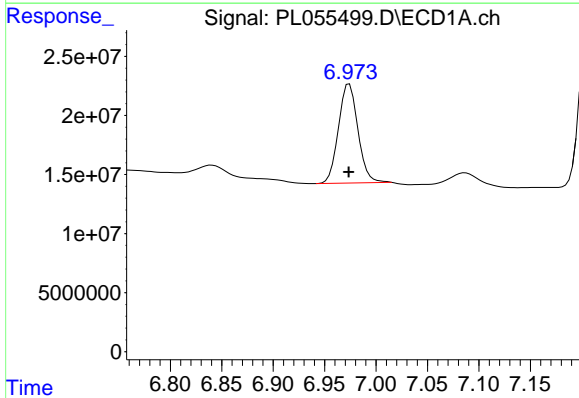


#19 Endosulfan Sulfate  
 R.T.: 6.718 min  
 Delta R.T.: 0.000 min  
 Response: 227438757  
 Conc: 34.38 ng/ml

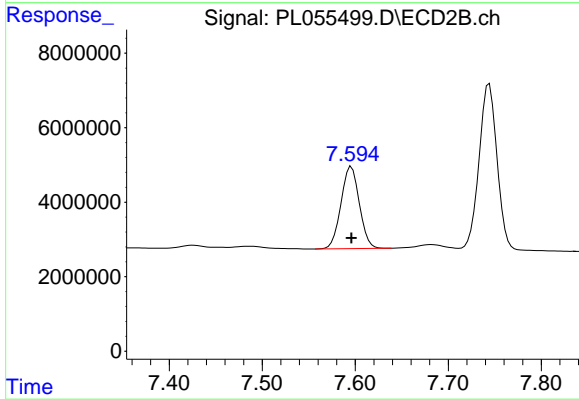
Instrument :  
 ECD\_L  
 ClientSampleId :  
 PSTDICC025



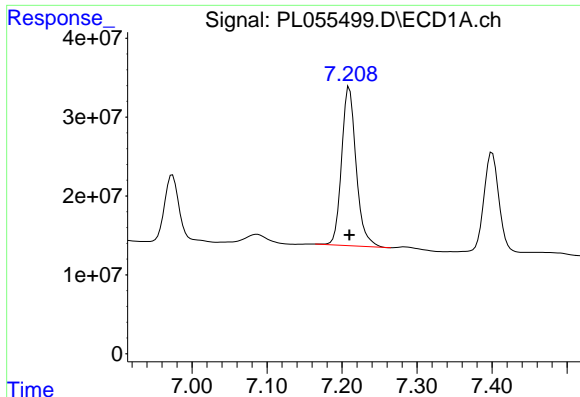
#19 Endosulfan Sulfate  
 R.T.: 7.272 min  
 Delta R.T.: 0.000 min  
 Response: 56629037  
 Conc: 25.69 ng/ml



#20 Methoxychlor  
 R.T.: 6.974 min  
 Delta R.T.: 0.000 min  
 Response: 110897350  
 Conc: 24.36 ng/ml



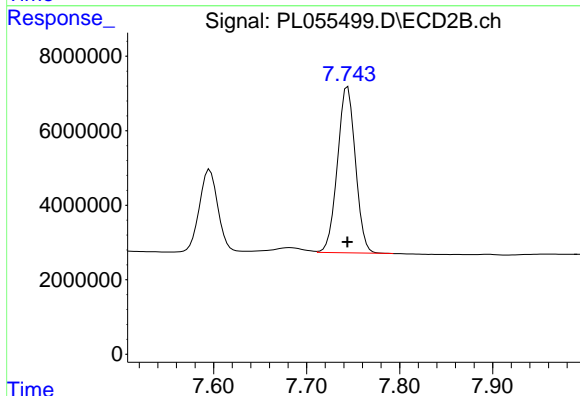
#20 Methoxychlor  
 R.T.: 7.596 min  
 Delta R.T.: 0.000 min  
 Response: 30231960  
 Conc: 25.63 ng/ml



#21 Endrin ketone

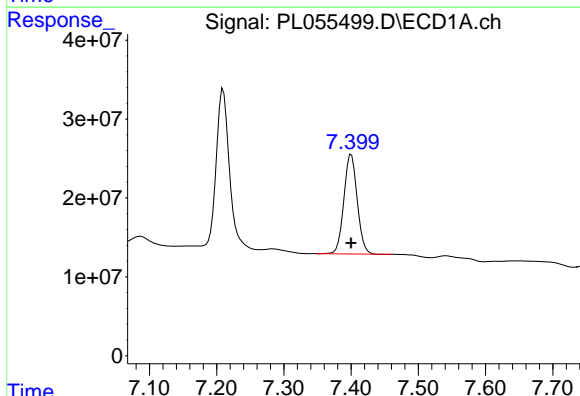
R.T.: 7.210 min  
 Delta R.T.: 0.000 min  
 Response: 271444122  
 Conc: 25.63 ng/ml

Instrument :  
 ECD\_L  
 ClientSampleId :  
 PSTDICC025



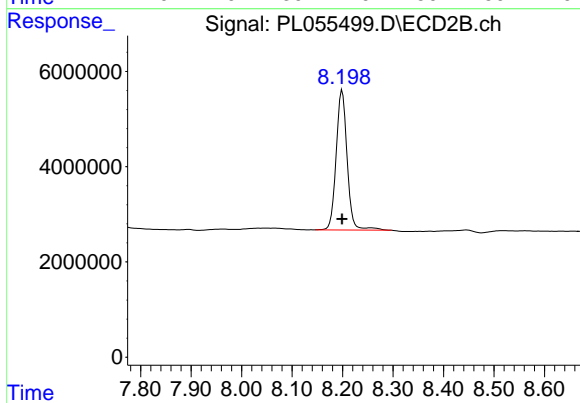
#21 Endrin ketone

R.T.: 7.744 min  
 Delta R.T.: 0.000 min  
 Response: 59788779  
 Conc: 25.36 ng/ml



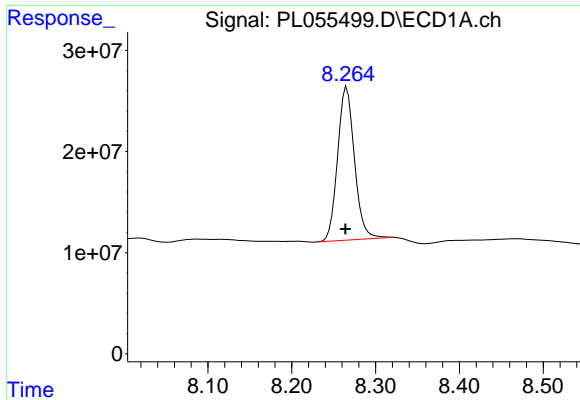
#22 Mirex

R.T.: 7.400 min  
 Delta R.T.: 0.000 min  
 Response: 173264719  
 Conc: 39.45 ng/ml



#22 Mirex

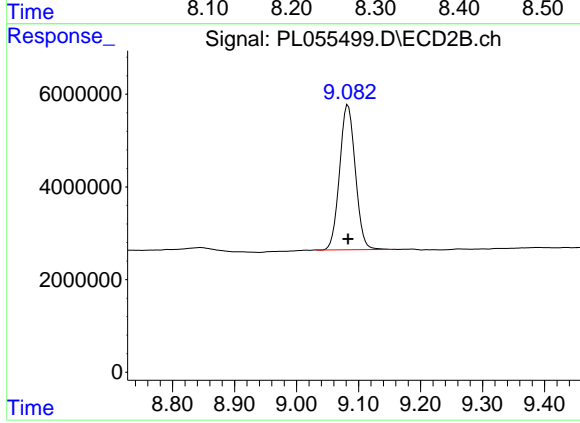
R.T.: 8.199 min  
 Delta R.T.: 0.000 min  
 Response: 44498102  
 Conc: 27.28 ng/ml



#28 Decachlorobiphenyl

R.T.: 8.266 min  
Delta R.T.: 0.001 min  
Response: 212453766  
Conc: 25.22 ng/ml

Instrument :  
ECD\_L  
ClientSampleId :  
PSTDICC025



#28 Decachlorobiphenyl

R.T.: 9.083 min  
Delta R.T.: 0.000 min  
Response: 55139948  
Conc: 25.38 ng/ml