

Data Path : Z:\pestpcbsrv\HPCHEM1\ECD_L\Data\PL010323\
 Data File : PL080024.D
 Signal(s) : Signal #1: ECD1A.ch Signal #2: ECD2B.ch
 Acq On : 03 Jan 2023 12:27
 Operator : AR\AJ
 Sample : PB149878BS
 Misc :
 ALS Vial : 6 Sample Multiplier: 1

Instrument :
 ECD_L
 ClientSampleId :

Integration File signal 1: autoint1.e
 Integration File signal 2: autoint2.e
 Quant Time: Jan 03 20:26:31 2023
 Quant Method : Z:\pestpcbsrv\HPCHEM1\ECD_L\methods\PL123022.M
 Quant Title : GC Extractables
 QLast Update : Fri Dec 30 05:17:19 2022
 Response via : Initial Calibration
 Integrator: ChemStation

Volume Inj. : 1 µl
 Signal #1 Phase : ZB-MR2 Signal #2 Phase: ZB-MR1
 Signal #1 Info : 30M x 0.32mm x0.2 Signal #2 Info : 30M x 0.32mm x0.5µm

	Compound	RT#1	RT#2	Resp#1	Resp#2	ng/ml	ng/ml

System Monitoring Compounds							
1)	SA Tetrachlo...	3.372	2.693	26812032	36520255	19.328	19.876
28)	SA Decachlor...	8.826	7.856	31883655	40760275	22.679	24.376
Target Compounds							
2)	A alpha-BHC	3.822	3.196	85361044	120.8E6	44.538	48.126
3)	MA gamma-BHC...	4.151	3.525	79935921	114.0E6	45.852	47.711
4)	MA Heptachlor	4.736	3.868	87734959	115.9E6	48.878	53.905
5)	MB Aldrin	5.075	4.149	85824750	117.9E6	51.339	51.441
6)	B beta-BHC	4.347	3.820	36278909	49254990	42.834	45.910
7)	B delta-BHC	4.591	4.051	72058295	98233665	42.549	42.935
8)	Heptachlo...	5.501	4.652	86996219	107.7E6	52.897	50.940
9)	A Endosulfan I	5.883	5.022	79136239	100.4E6	50.768	49.027
10)	B gamma-Chl...	5.755	4.904	84932486	111.5E6	49.538	51.809
11)	B alpha-Chl...	5.835	4.968	85063833	111.8E6	51.190	52.318
12)	B 4,4'-DDE	6.013	5.161	75044234	95128739	50.864	52.227
13)	MA Dieldrin	6.158	5.288	84858868	111.4E6	51.949	55.161
14)	MA Endrin	6.385	5.562	73405723	93963326	55.966	60.709
15)	B Endosulfa...	6.604	5.856	80717703	94450365	55.394	54.388
16)	A 4,4'-DDD	6.528	5.716	65678022	77043812	52.382	50.569
17)	MA 4,4'-DDT	6.841	5.968	67950949	81921071	53.571	62.367
18)	B Endrin al...	6.734	6.037	62035035	79440296	56.749	59.041
19)	B Endosulfa...	6.968	6.260	74719162	92189747	51.616	52.921
20)	A Methoxychlor	7.321	6.548	40637282	46952603	57.335	60.971
21)	B Endrin ke...	7.449	6.765	79252453	96366891	52.268	52.201
22)	Mirex	7.922	6.952	69757988	90515239	53.064	58.786
23)	Chlordane-1	0.000	3.726f	0	190030	N.D.	3.021 #
24)	Chlordane-2	0.000	4.283	0	1684372	N.D.	24.829 #
25)	Chlordane-3	5.755	4.904	84932486	111.5E6	333.663	550.311 #
26)	Chlordane-4	5.835	4.968	85063833	111.8E6	275.607	558.552 #
27)	Chlordane-5	0.000	5.654f	0	130145	N.D.	2.400 #

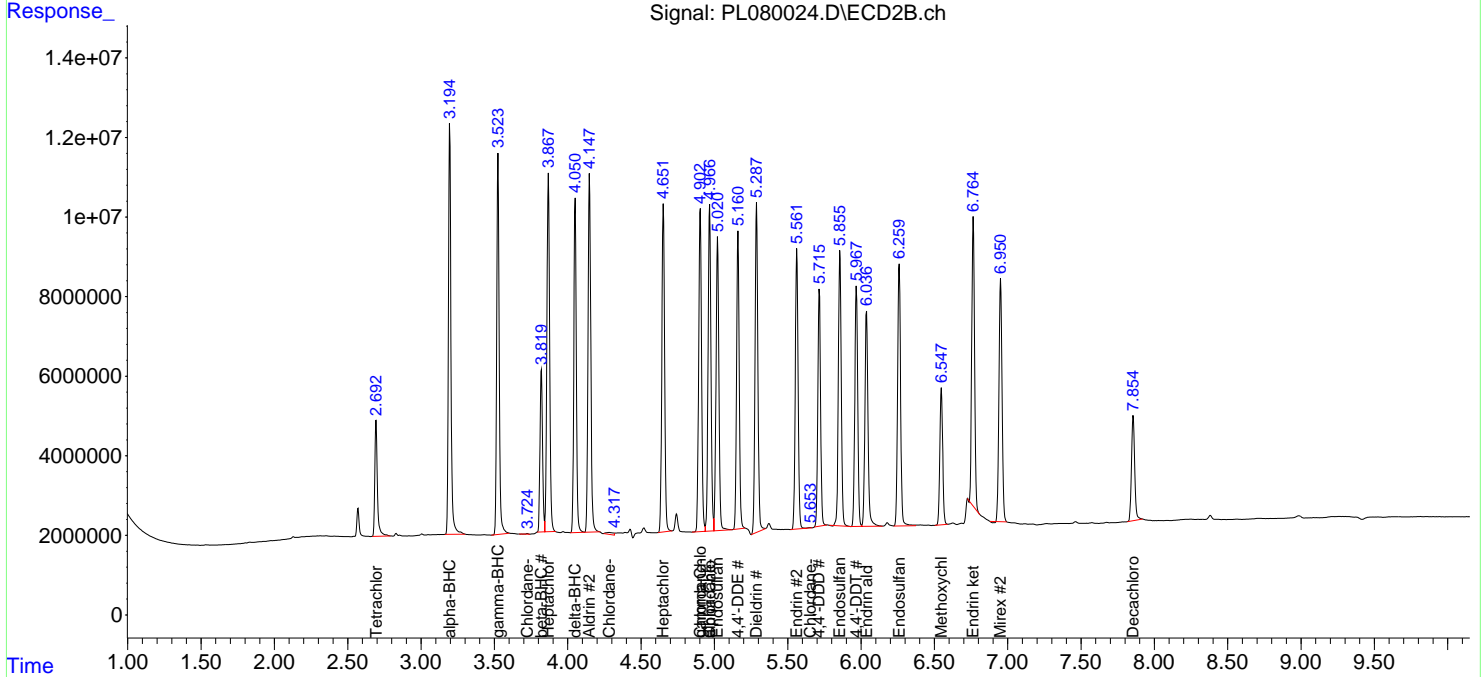
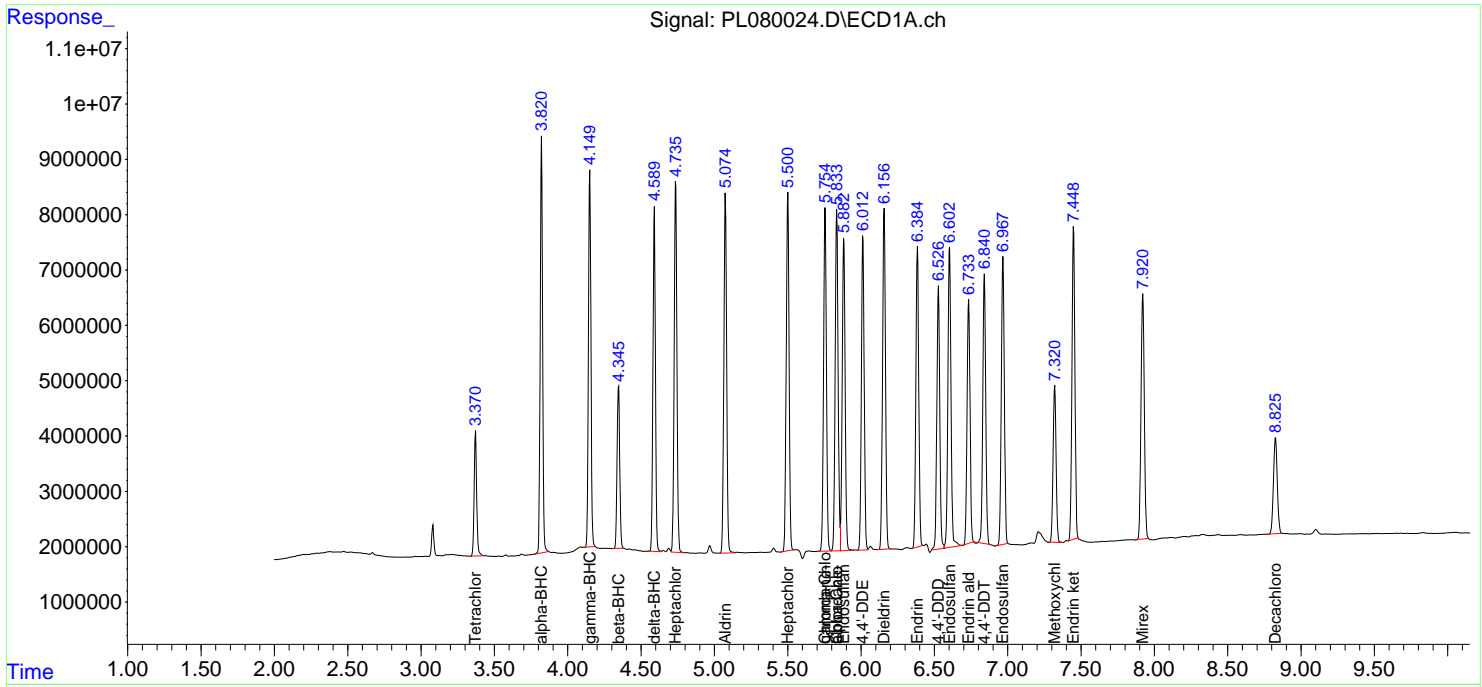
(f)=RT Delta > 1/2 Window (#)=Amounts differ by > 25% (m)=manual int.

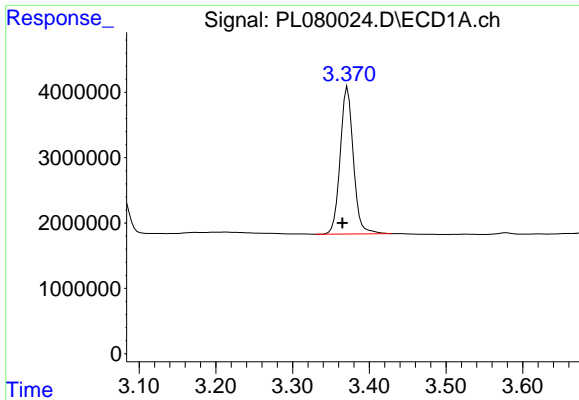
Data Path : Z:\pestpcbsrv\HPCHEM1\ECD_L\Data\PL010323\
 Data File : PL080024.D
 Signal(s) : Signal #1: ECD1A.ch Signal #2: ECD2B.ch
 Acq On : 03 Jan 2023 12:27
 Operator : AR\AJ
 Sample : PB149878BS
 Misc :
 ALS Vial : 6 Sample Multiplier: 1

Instrument :
 ECD_L
 ClientSampleId :

Integration File signal 1: autoint1.e
 Integration File signal 2: autoint2.e
 Quant Time: Jan 03 20:26:31 2023
 Quant Method : Z:\pestpcbsrv\HPCHEM1\ECD_L\methods\PL123022.M
 Quant Title : GC Extractables
 QLast Update : Fri Dec 30 05:17:19 2022
 Response via : Initial Calibration
 Integrator: ChemStation

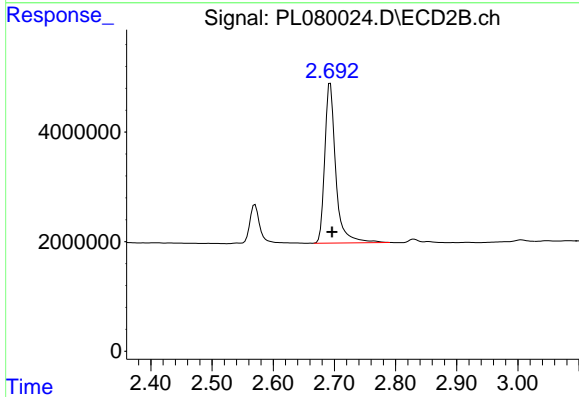
Volume Inj. : 1 µl
 Signal #1 Phase : ZB-MR2 Signal #2 Phase: ZB-MR1
 Signal #1 Info : 30M x 0.32mm x0.2 Signal #2 Info : 30M x 0.32mm x0.5µm



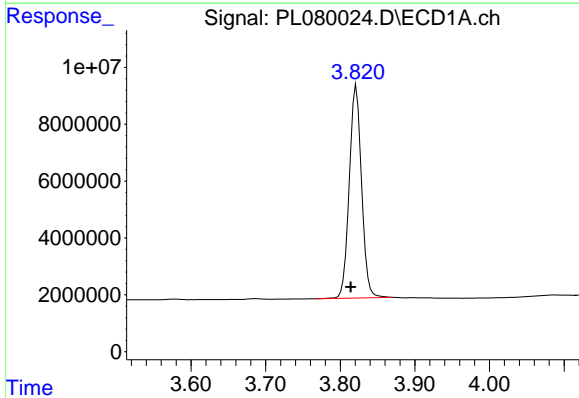


#1 Tetrachloro-m-xylene
 R.T.: 3.372 min
 Delta R.T.: 0.007 min
 Response: 26812032
 Conc: 19.33 ng/ml

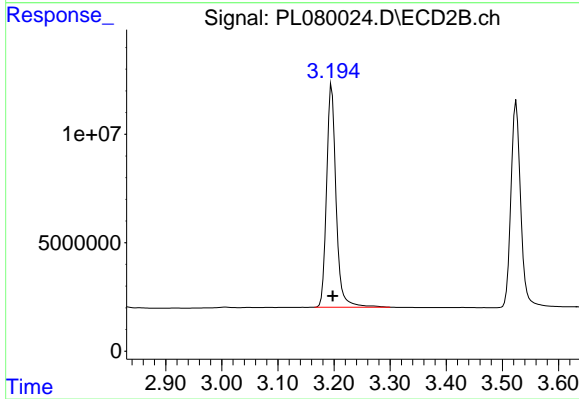
Instrument :
 ECD_L
 ClientSampleId :



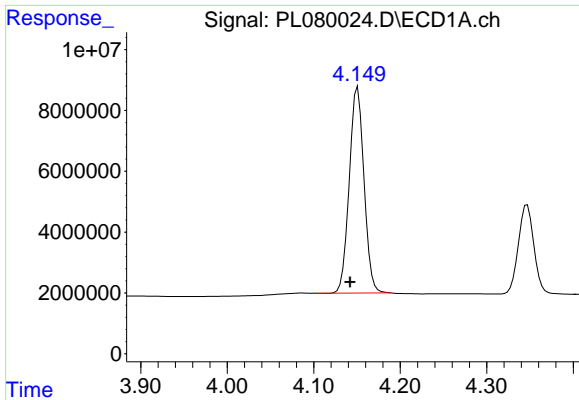
#1 Tetrachloro-m-xylene
 R.T.: 2.693 min
 Delta R.T.: -0.003 min
 Response: 36520255
 Conc: 19.88 ng/ml



#2 alpha-BHC
 R.T.: 3.822 min
 Delta R.T.: 0.008 min
 Response: 85361044
 Conc: 44.54 ng/ml



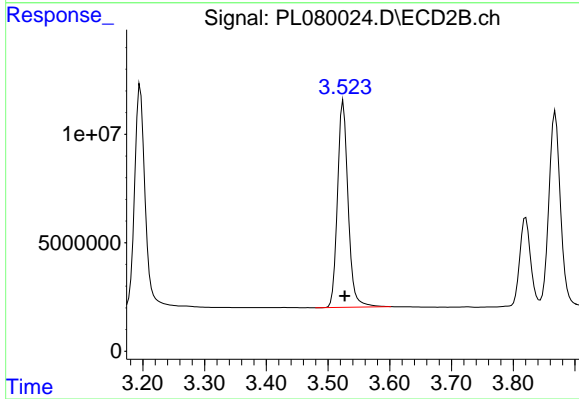
#2 alpha-BHC
 R.T.: 3.196 min
 Delta R.T.: -0.002 min
 Response: 120809720
 Conc: 48.13 ng/ml



#3 gamma-BHC (Lindane)

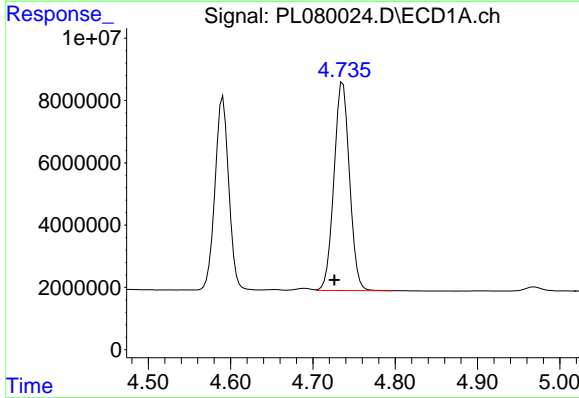
R.T.: 4.151 min
 Delta R.T.: 0.009 min
 Response: 79935921
 Conc: 45.85 ng/ml

Instrument :
 ECD_L
 ClientSampleId :



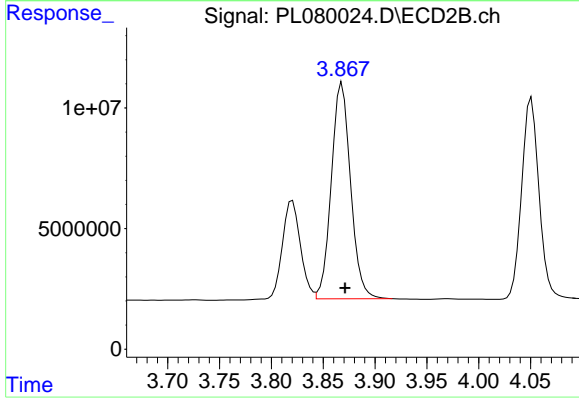
#3 gamma-BHC (Lindane)

R.T.: 3.525 min
 Delta R.T.: -0.002 min
 Response: 113964069
 Conc: 47.71 ng/ml



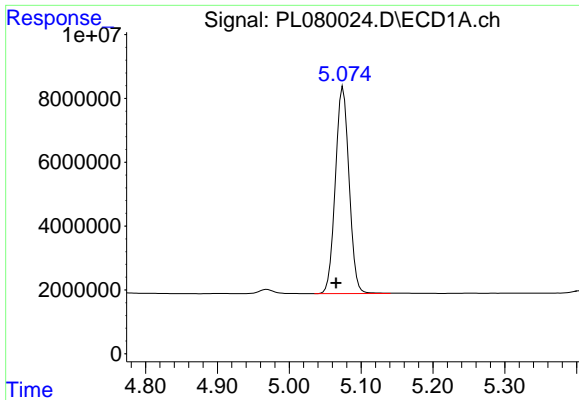
#4 Heptachlor

R.T.: 4.736 min
 Delta R.T.: 0.010 min
 Response: 87734959
 Conc: 48.88 ng/ml



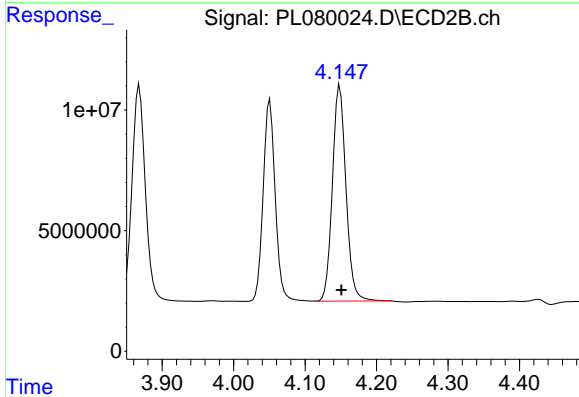
#4 Heptachlor

R.T.: 3.868 min
 Delta R.T.: -0.003 min
 Response: 115856136
 Conc: 53.91 ng/ml

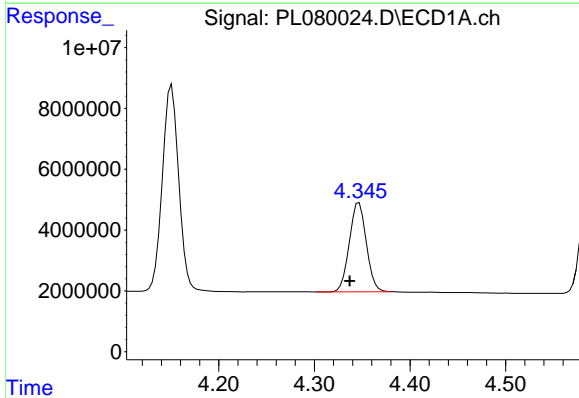


#5 Aldrin
 R.T.: 5.075 min
 Delta R.T.: 0.010 min
 Response: 85824750
 Conc: 51.34 ng/ml

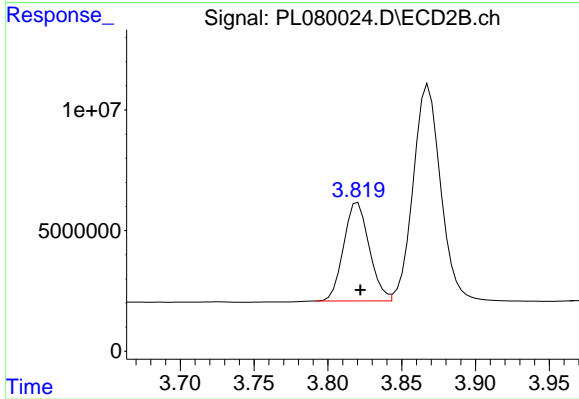
Instrument :
 ECD_L
 ClientSampleId :



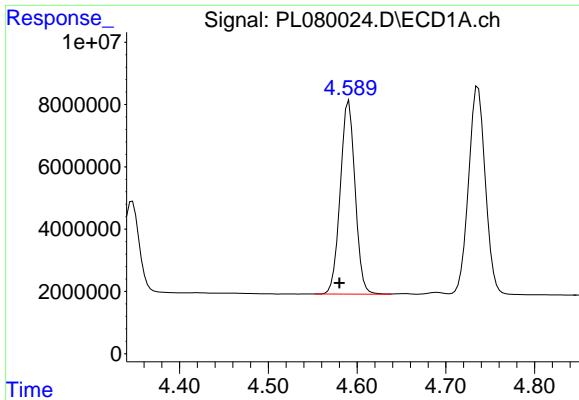
#5 Aldrin
 R.T.: 4.149 min
 Delta R.T.: -0.002 min
 Response: 117897687
 Conc: 51.44 ng/ml



#6 beta-BHC
 R.T.: 4.347 min
 Delta R.T.: 0.010 min
 Response: 36278909
 Conc: 42.83 ng/ml



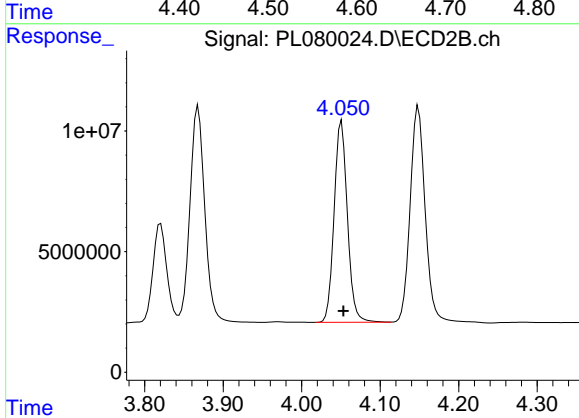
#6 beta-BHC
 R.T.: 3.820 min
 Delta R.T.: -0.002 min
 Response: 49254990
 Conc: 45.91 ng/ml



#7 delta-BHC

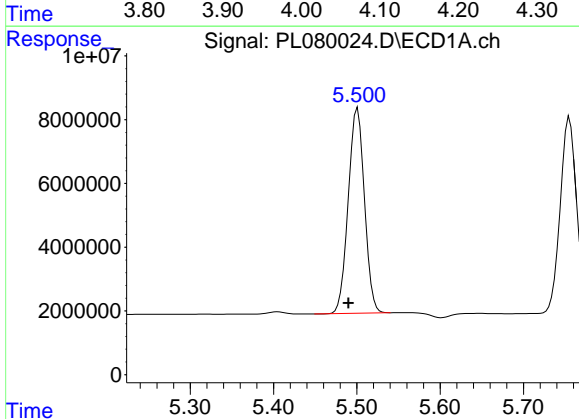
R.T.: 4.591 min
 Delta R.T.: 0.011 min
 Response: 72058295
 Conc: 42.55 ng/ml

Instrument :
 ECD_L
 ClientSampleId :



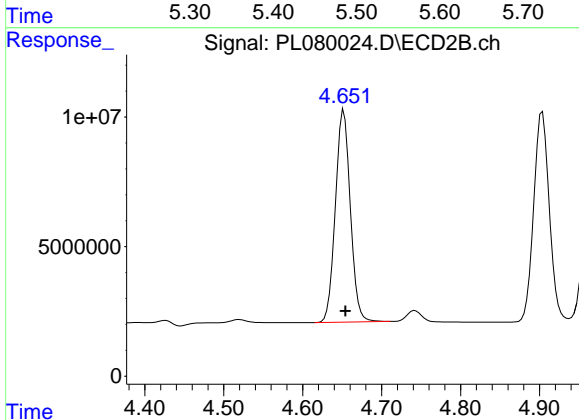
#7 delta-BHC

R.T.: 4.051 min
 Delta R.T.: -0.002 min
 Response: 98233665
 Conc: 42.94 ng/ml



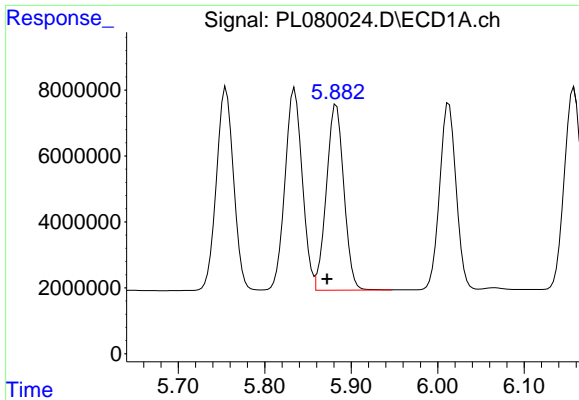
#8 Heptachlor epoxide

R.T.: 5.501 min
 Delta R.T.: 0.011 min
 Response: 86996219
 Conc: 52.90 ng/ml



#8 Heptachlor epoxide

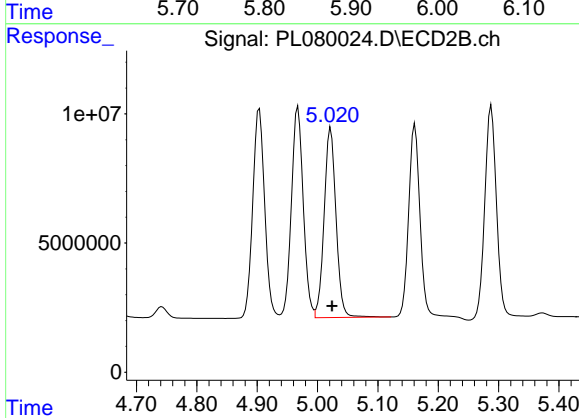
R.T.: 4.652 min
 Delta R.T.: -0.002 min
 Response: 107719817
 Conc: 50.94 ng/ml



#9 Endosulfan I

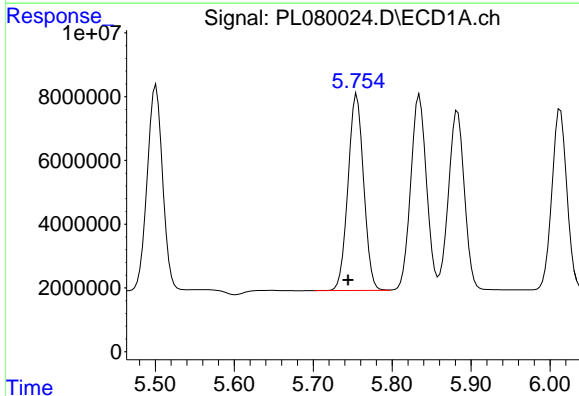
R.T.: 5.883 min
 Delta R.T.: 0.011 min
 Response: 79136239
 Conc: 50.77 ng/ml

Instrument :
 ECD_L
 ClientSampleId :



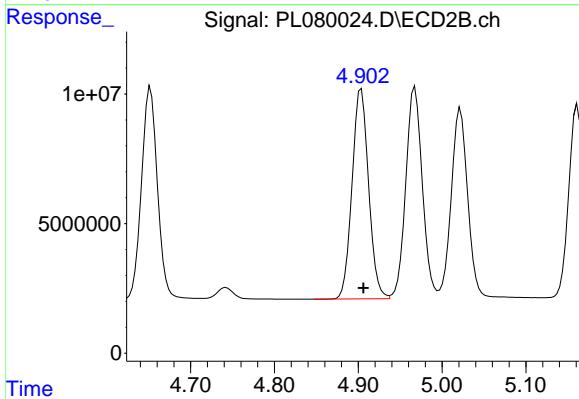
#9 Endosulfan I

R.T.: 5.022 min
 Delta R.T.: -0.002 min
 Response: 100362546
 Conc: 49.03 ng/ml



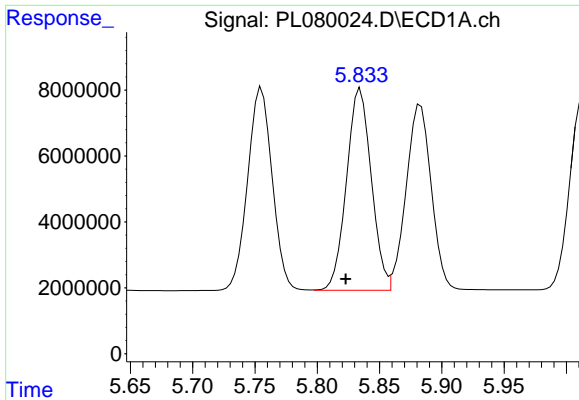
#10 gamma-Chlordane

R.T.: 5.755 min
 Delta R.T.: 0.011 min
 Response: 84932486
 Conc: 49.54 ng/ml



#10 gamma-Chlordane

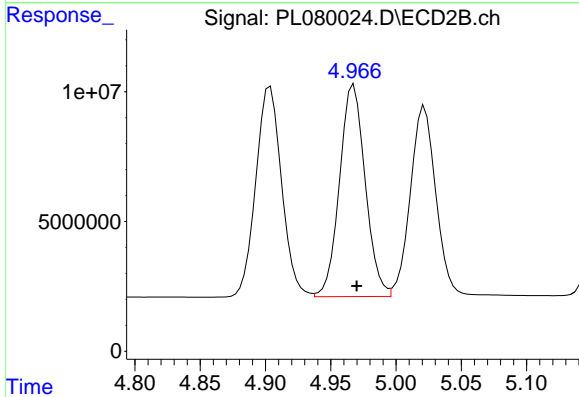
R.T.: 4.904 min
 Delta R.T.: -0.002 min
 Response: 111460251
 Conc: 51.81 ng/ml



#11 alpha-Chlordane

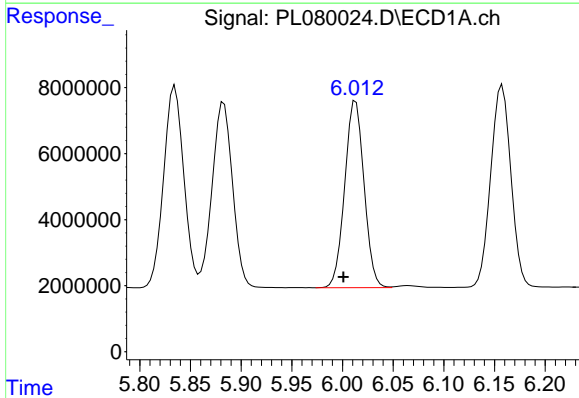
R.T.: 5.835 min
 Delta R.T.: 0.012 min
 Response: 85063833
 Conc: 51.19 ng/ml

Instrument :
 ECD_L
 ClientSampleId :



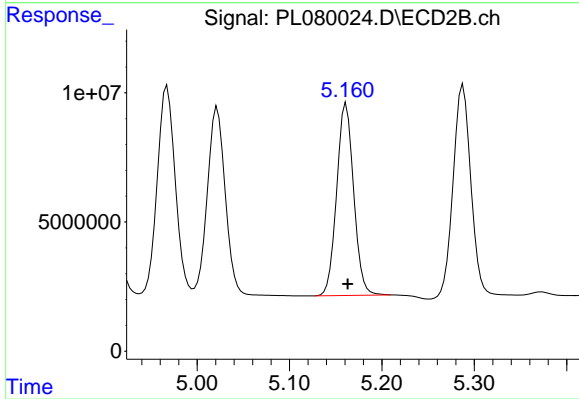
#11 alpha-Chlordane

R.T.: 4.968 min
 Delta R.T.: -0.002 min
 Response: 111766115
 Conc: 52.32 ng/ml



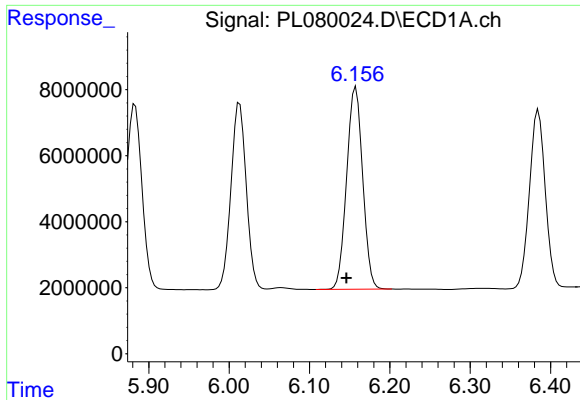
#12 4,4'-DDE

R.T.: 6.013 min
 Delta R.T.: 0.012 min
 Response: 75044234
 Conc: 50.86 ng/ml



#12 4,4'-DDE

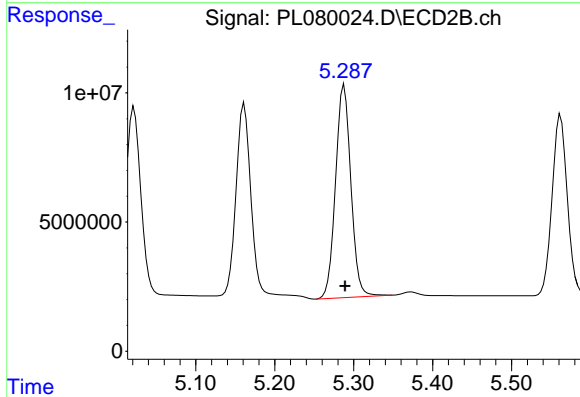
R.T.: 5.161 min
 Delta R.T.: -0.002 min
 Response: 95128739
 Conc: 52.23 ng/ml



#13 Dieldrin

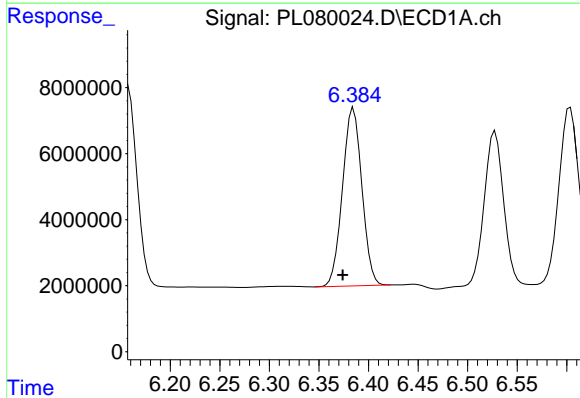
R.T.: 6.158 min
 Delta R.T.: 0.012 min
 Response: 84858868
 Conc: 51.95 ng/ml

Instrument :
 ECD_L
 ClientSampleId :



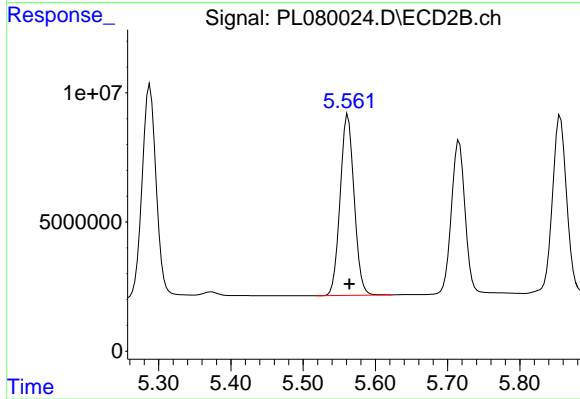
#13 Dieldrin

R.T.: 5.288 min
 Delta R.T.: 0.000 min
 Response: 111372813
 Conc: 55.16 ng/ml



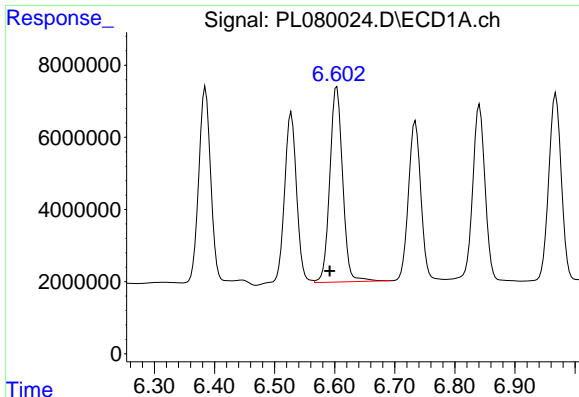
#14 Endrin

R.T.: 6.385 min
 Delta R.T.: 0.011 min
 Response: 73405723
 Conc: 55.97 ng/ml



#14 Endrin

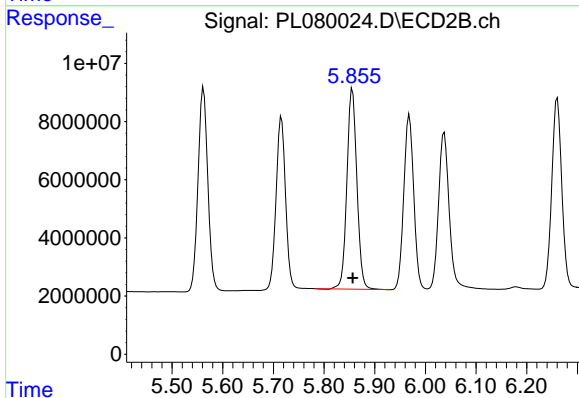
R.T.: 5.562 min
 Delta R.T.: -0.002 min
 Response: 93963326
 Conc: 60.71 ng/ml



#15 Endosulfan II

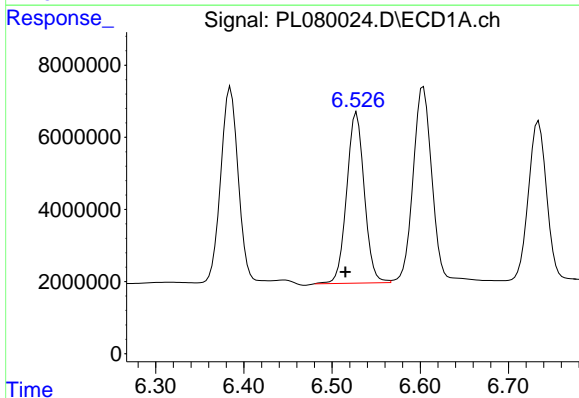
R.T.: 6.604 min
 Delta R.T.: 0.012 min
 Response: 80717703
 Conc: 55.39 ng/ml

Instrument :
 ECD_L
 ClientSampleId :



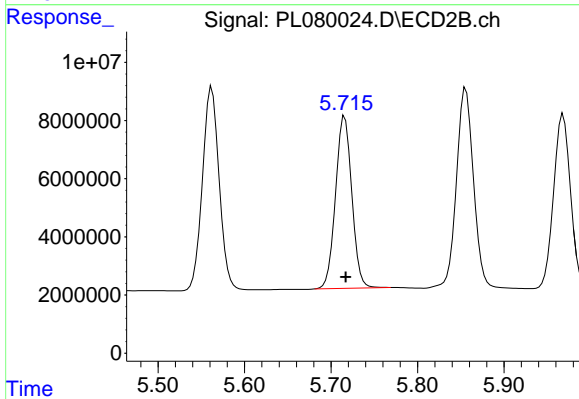
#15 Endosulfan II

R.T.: 5.856 min
 Delta R.T.: -0.001 min
 Response: 94450365
 Conc: 54.39 ng/ml



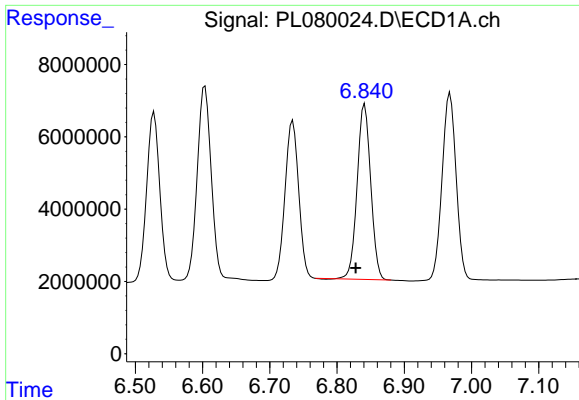
#16 4,4'-DDD

R.T.: 6.528 min
 Delta R.T.: 0.013 min
 Response: 65678022
 Conc: 52.38 ng/ml



#16 4,4'-DDD

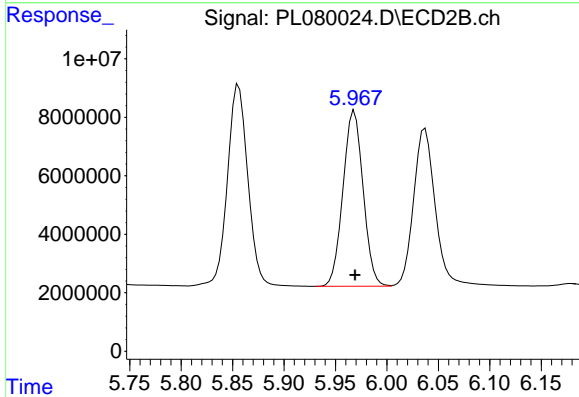
R.T.: 5.716 min
 Delta R.T.: -0.001 min
 Response: 77043812
 Conc: 50.57 ng/ml



#17 4,4'-DDT

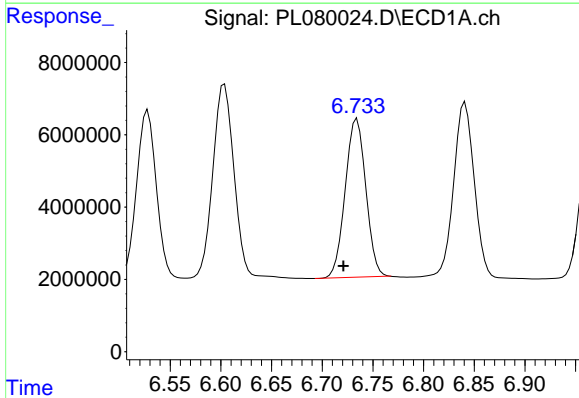
R.T.: 6.841 min
 Delta R.T.: 0.013 min
 Response: 67950949
 Conc: 53.57 ng/ml

Instrument :
 ECD_L
 ClientSampleId :



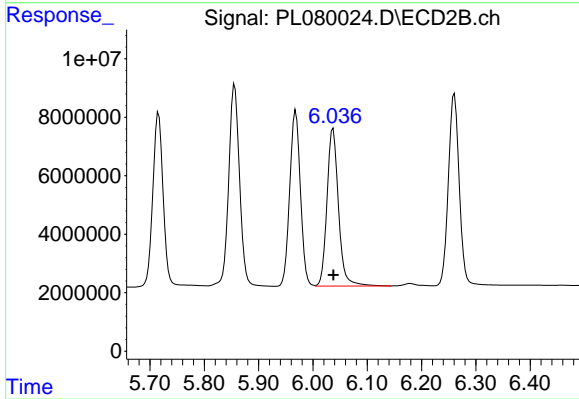
#17 4,4'-DDT

R.T.: 5.968 min
 Delta R.T.: 0.000 min
 Response: 81921071
 Conc: 62.37 ng/ml



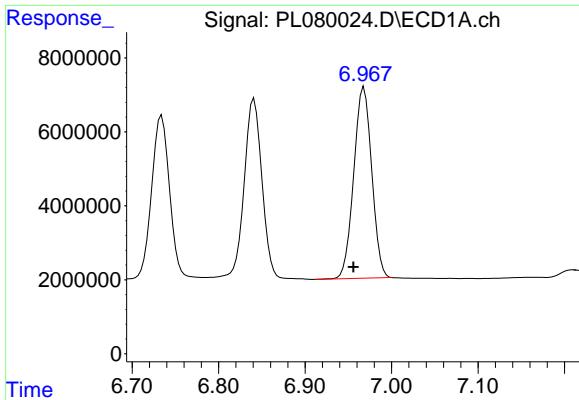
#18 Endrin aldehyde

R.T.: 6.734 min
 Delta R.T.: 0.013 min
 Response: 62035035
 Conc: 56.75 ng/ml



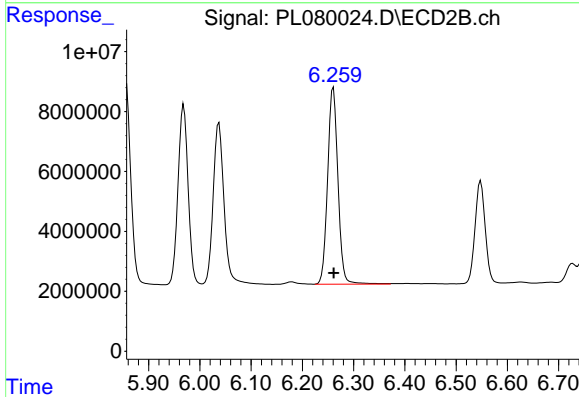
#18 Endrin aldehyde

R.T.: 6.037 min
 Delta R.T.: 0.000 min
 Response: 79440296
 Conc: 59.04 ng/ml

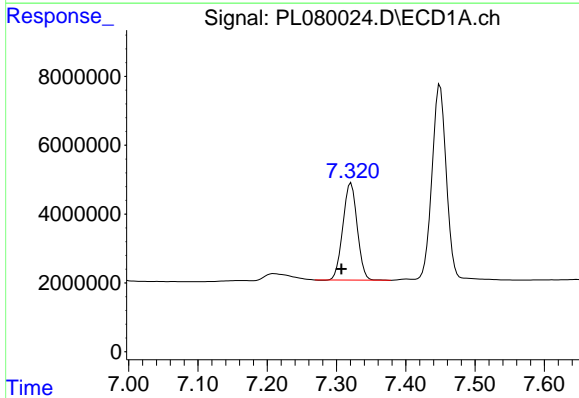


#19 Endosulfan Sulfate
 R.T.: 6.968 min
 Delta R.T.: 0.012 min
 Response: 74719162
 Conc: 51.62 ng/ml

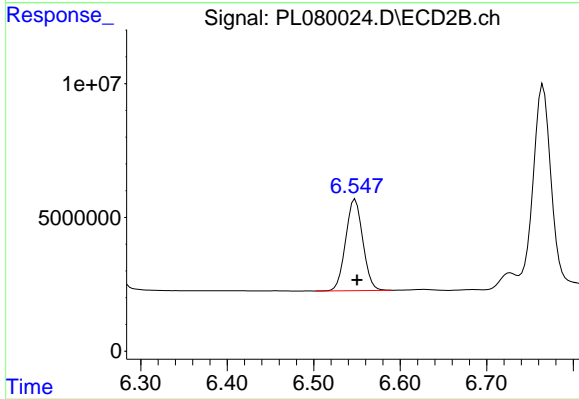
Instrument :
 ECD_L
 ClientSampleId :



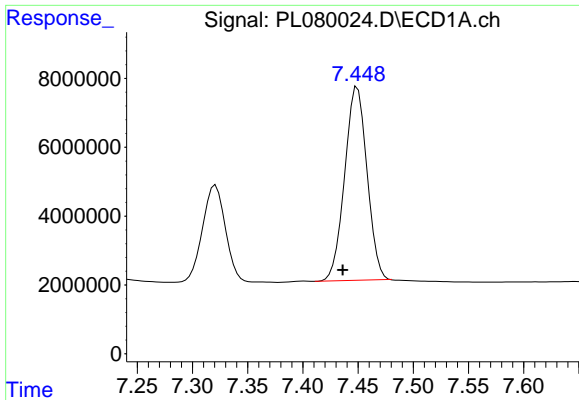
#19 Endosulfan Sulfate
 R.T.: 6.260 min
 Delta R.T.: 0.000 min
 Response: 92189747
 Conc: 52.92 ng/ml



#20 Methoxychlor
 R.T.: 7.321 min
 Delta R.T.: 0.014 min
 Response: 40637282
 Conc: 57.34 ng/ml



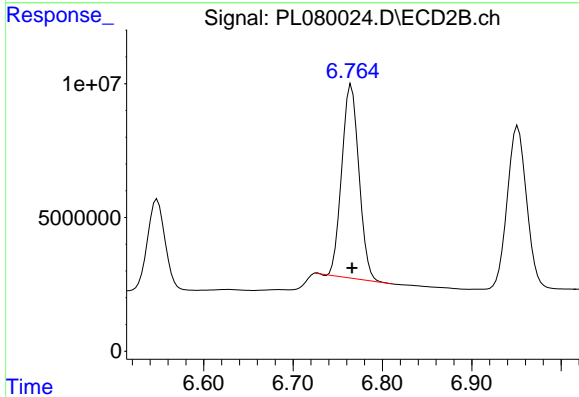
#20 Methoxychlor
 R.T.: 6.548 min
 Delta R.T.: -0.002 min
 Response: 46952603
 Conc: 60.97 ng/ml



#21 Endrin ketone

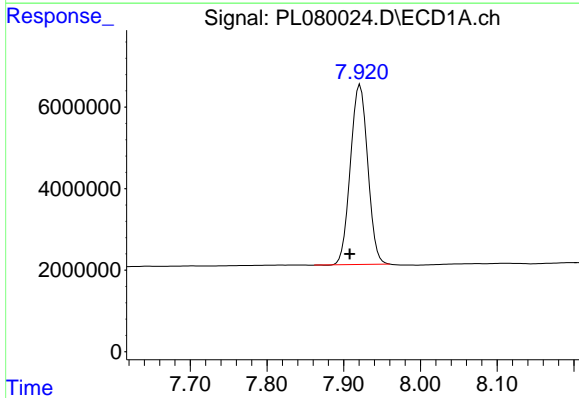
R.T.: 7.449 min
 Delta R.T.: 0.013 min
 Response: 79252453
 Conc: 52.27 ng/ml

Instrument :
 ECD_L
 ClientSampleId :



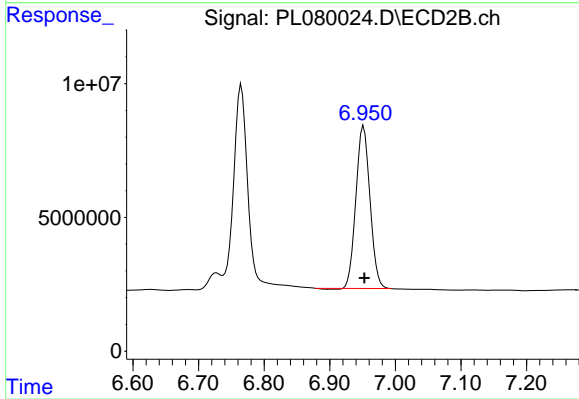
#21 Endrin ketone

R.T.: 6.765 min
 Delta R.T.: 0.000 min
 Response: 96366891
 Conc: 52.20 ng/ml



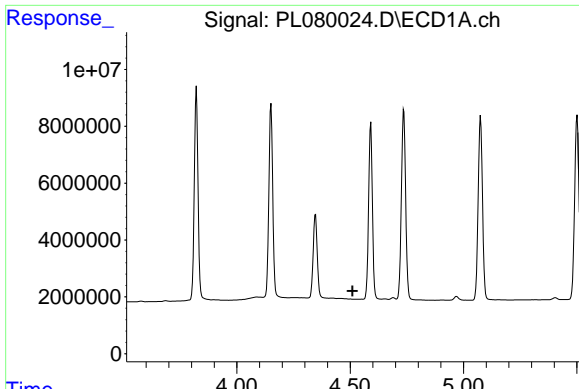
#22 Mirex

R.T.: 7.922 min
 Delta R.T.: 0.014 min
 Response: 69757988
 Conc: 53.06 ng/ml



#22 Mirex

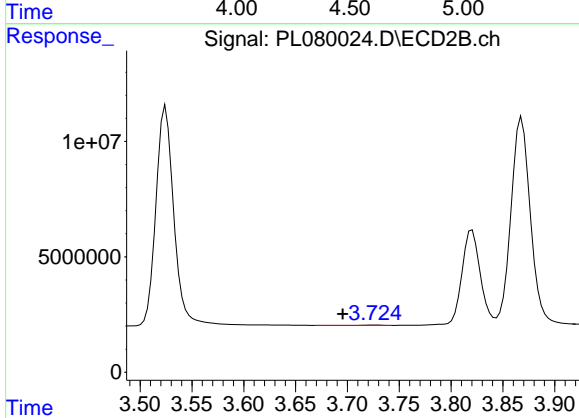
R.T.: 6.952 min
 Delta R.T.: -0.001 min
 Response: 90515239
 Conc: 58.79 ng/ml



#23 Chlordane-1

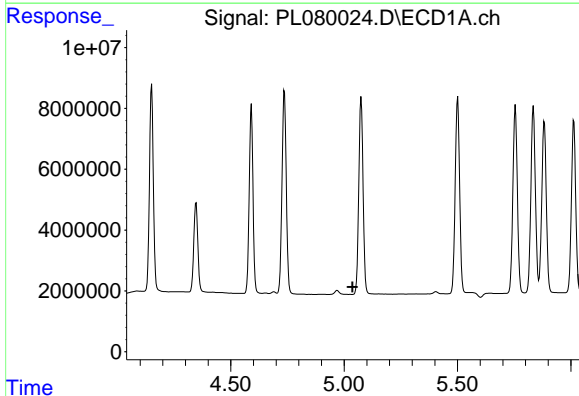
R.T.: 0.000 min
 Exp R.T. : 4.511 min
 Response: 0
 Conc: N.D.

Instrument :
 ECD_L
 ClientSampleId :



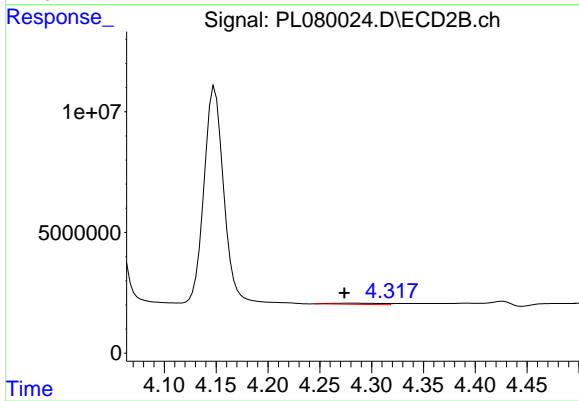
#23 Chlordane-1

R.T.: 3.726 min
 Delta R.T.: 0.030 min
 Response: 190030
 Conc: 3.02 ng/ml



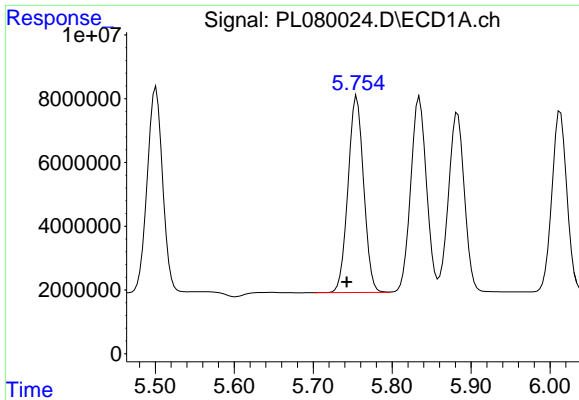
#24 Chlordane-2

R.T.: 0.000 min
 Exp R.T. : 5.037 min
 Response: 0
 Conc: N.D.



#24 Chlordane-2

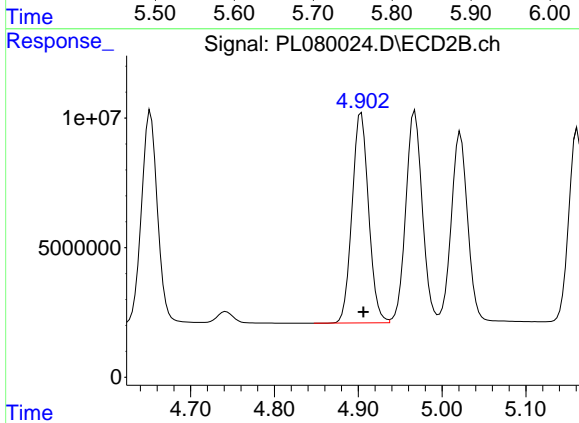
R.T.: 4.283 min
 Delta R.T.: 0.010 min
 Response: 1684372
 Conc: 24.83 ng/ml



#25 Chlordane-3

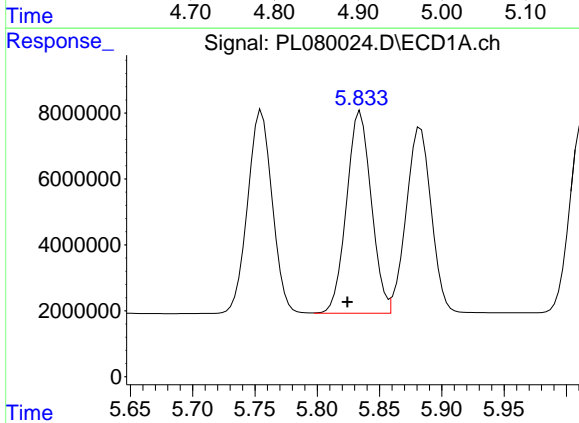
R.T.: 5.755 min
 Delta R.T.: 0.013 min
 Response: 84932486
 Conc: 333.66 ng/ml

Instrument :
 ECD_L
 ClientSampleId :



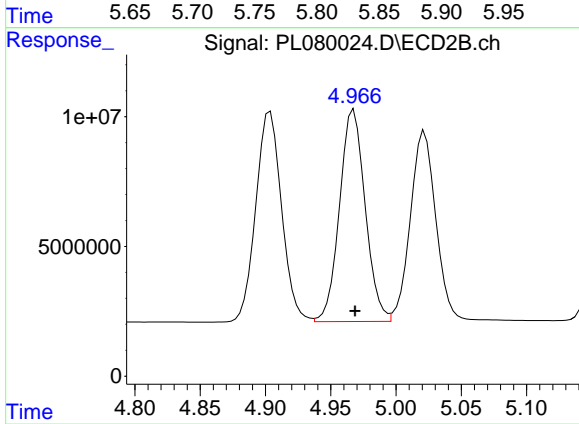
#25 Chlordane-3

R.T.: 4.904 min
 Delta R.T.: -0.002 min
 Response: 111460251
 Conc: 550.31 ng/ml



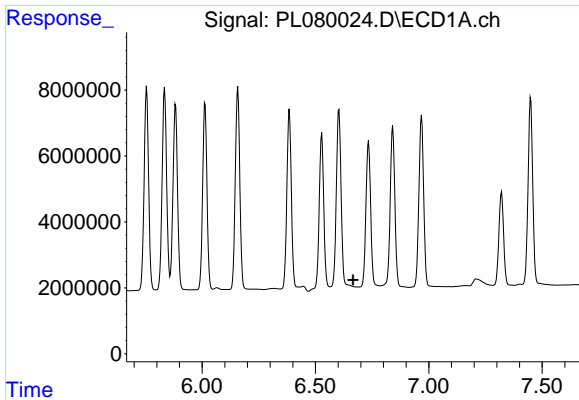
#26 Chlordane-4

R.T.: 5.835 min
 Delta R.T.: 0.011 min
 Response: 85063833
 Conc: 275.61 ng/ml



#26 Chlordane-4

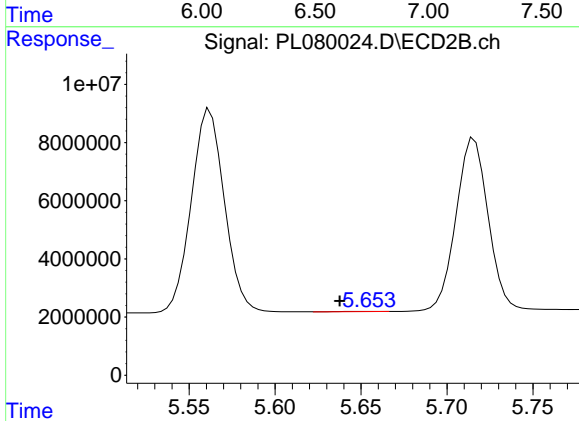
R.T.: 4.968 min
 Delta R.T.: 0.000 min
 Response: 111766115
 Conc: 558.55 ng/ml



#27 Chlordane-5

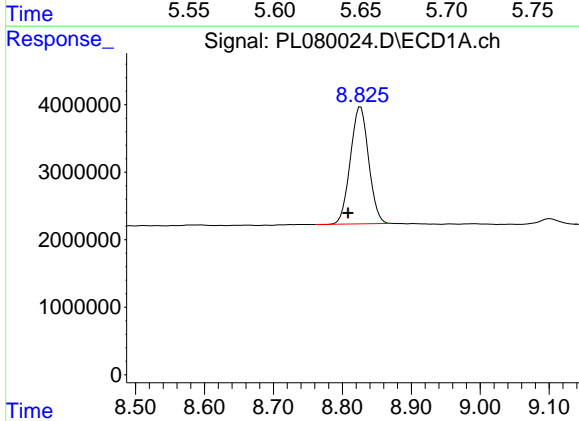
R.T.: 0.000 min
 Exp R.T.: 6.667 min
 Response: 0
 Conc: N.D.

Instrument :
 ECD_L
 ClientSampleId :



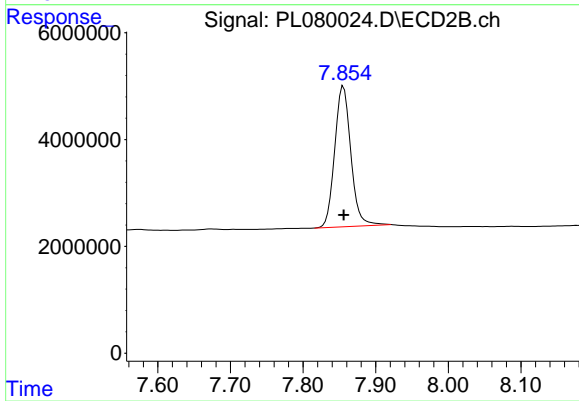
#27 Chlordane-5

R.T.: 5.654 min
 Delta R.T.: 0.016 min
 Response: 130145
 Conc: 2.40 ng/ml



#28 Decachlorobiphenyl

R.T.: 8.826 min
 Delta R.T.: 0.018 min
 Response: 31883655
 Conc: 22.68 ng/ml



#28 Decachlorobiphenyl

R.T.: 7.856 min
 Delta R.T.: 0.000 min
 Response: 40760275
 Conc: 24.38 ng/ml