

Data Path : Z:\pestpcbsrv\HPCHEM1\ECD_L\Data\PL010323\
 Data File : PL080051.D
 Signal(s) : Signal #1: ECD1A.ch Signal #2: ECD2B.ch
 Acq On : 03 Jan 2023 20:39
 Operator : AR\AJ
 Sample : PB150011BL
 Misc :
 ALS Vial : 28 Sample Multiplier: 1

Instrument :
 ECD_L
 ClientSampleId :
 PB150011BL

Integration File signal 1: autoint1.e
 Integration File signal 2: autoint2.e
 Quant Time: Jan 03 23:24:40 2023
 Quant Method : Z:\pestpcbsrv\HPCHEM1\ECD_L\methods\PL123022.M
 Quant Title : GC Extractables
 QLast Update : Fri Dec 30 05:17:19 2022
 Response via : Initial Calibration
 Integrator: ChemStation

Volume Inj. : 1 µl
 Signal #1 Phase : ZB-MR2 Signal #2 Phase: ZB-MR1
 Signal #1 Info : 30M x 0.32mm x0.2 Signal #2 Info : 30M x 0.32mm x0.5µm

Compound	RT#1	RT#2	Resp#1	Resp#2	ng/ml	ng/ml

System Monitoring Compounds						
1) SA Tetrachlo...	3.366	2.695	27959033	40690955	20.155	22.146
28) SA Decachlor...	8.817	7.852	33991039	43927400	24.178	26.270

Target Compounds

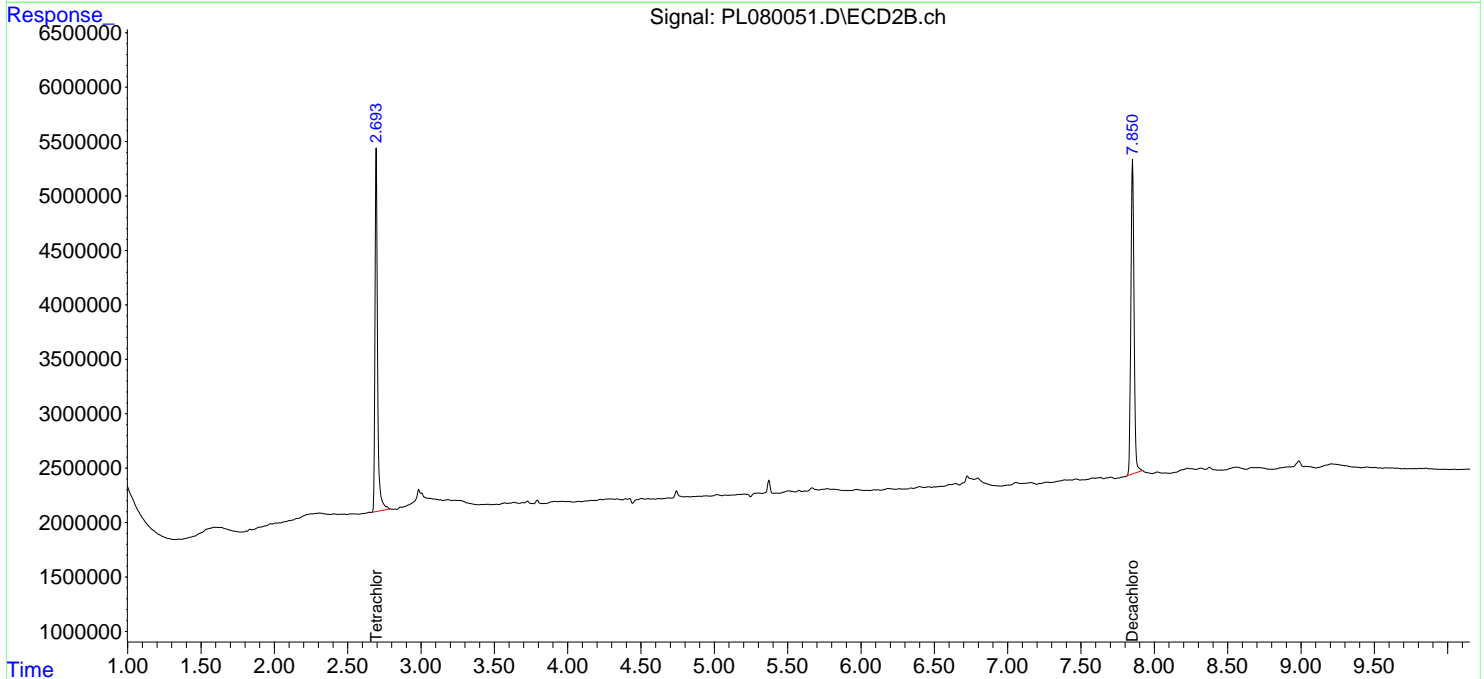
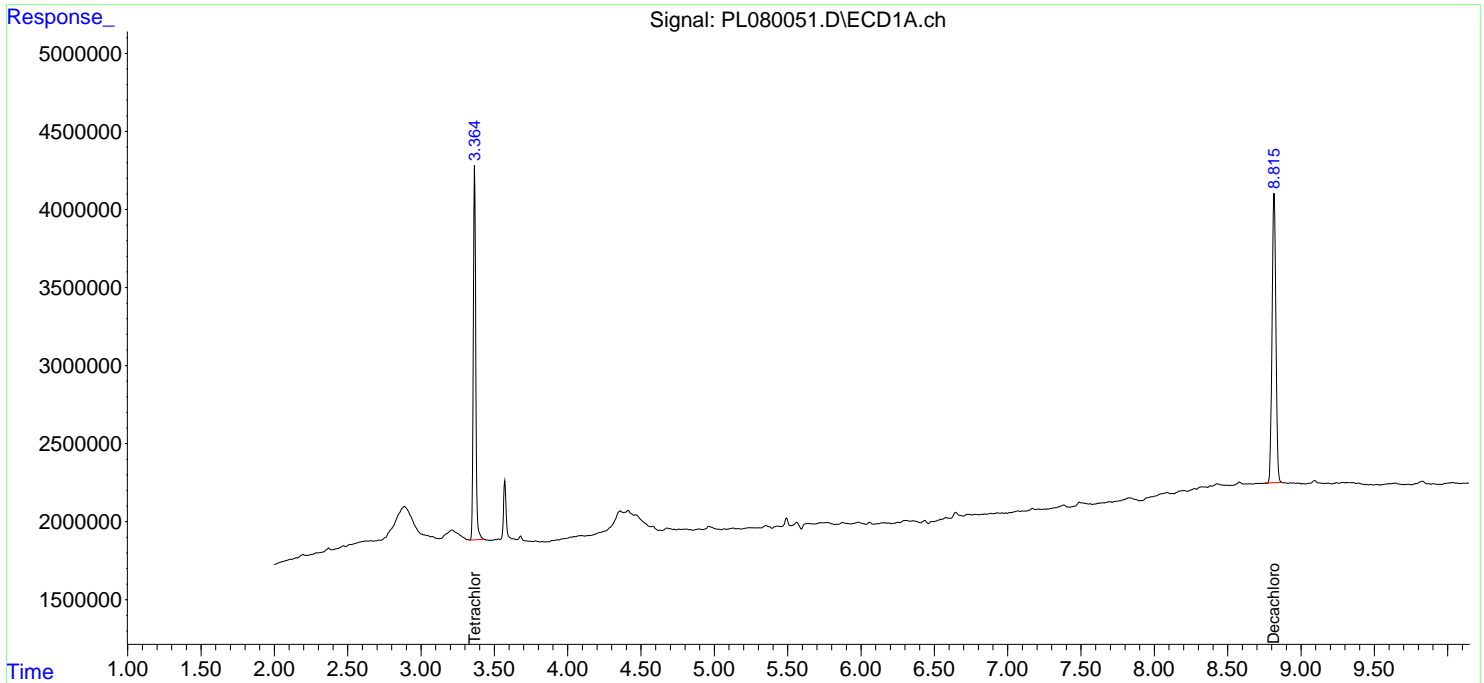
(f)=RT Delta > 1/2 Window (#)=Amounts differ by > 25% (m)=manual int.

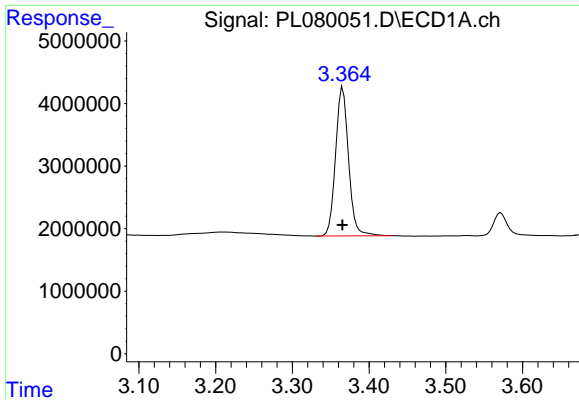
Data Path : Z:\pestpcbsrv\HPCHEM1\ECD_L\Data\PL010323\
 Data File : PL080051.D
 Signal(s) : Signal #1: ECD1A.ch Signal #2: ECD2B.ch
 Acq On : 03 Jan 2023 20:39
 Operator : AR\AJ
 Sample : PB150011BL
 Misc :
 ALS Vial : 28 Sample Multiplier: 1

Instrument :
 ECD_L
 ClientSampleId :
 PB150011BL

Integration File signal 1: autoint1.e
 Integration File signal 2: autoint2.e
 Quant Time: Jan 03 23:24:40 2023
 Quant Method : Z:\pestpcbsrv\HPCHEM1\ECD_L\methods\PL123022.M
 Quant Title : GC Extractables
 QLast Update : Fri Dec 30 05:17:19 2022
 Response via : Initial Calibration
 Integrator: ChemStation

Volume Inj. : 1 µl
 Signal #1 Phase : ZB-MR2 Signal #2 Phase: ZB-MR1
 Signal #1 Info : 30M x 0.32mm x0.2 Signal #2 Info : 30M x 0.32mm x0.5µm

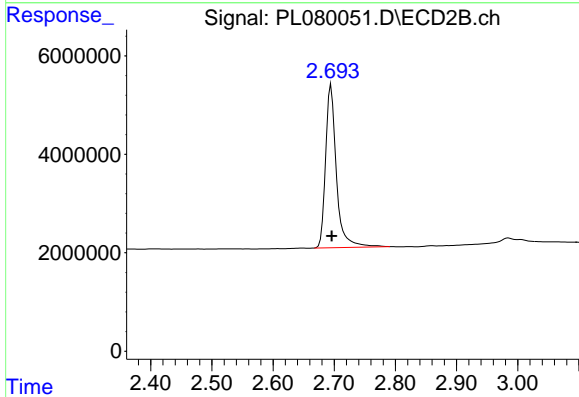




#1 Tetrachloro-m-xylene

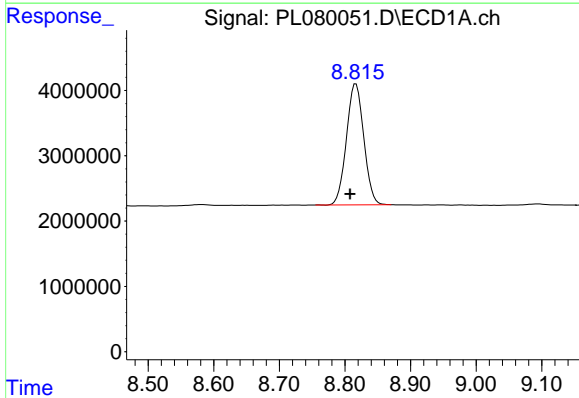
R.T.: 3.366 min
 Delta R.T.: 0.000 min
 Response: 27959033
 Conc: 20.15 ng/ml

Instrument :
 ECD_L
 ClientSampleId :
 PB150011BL



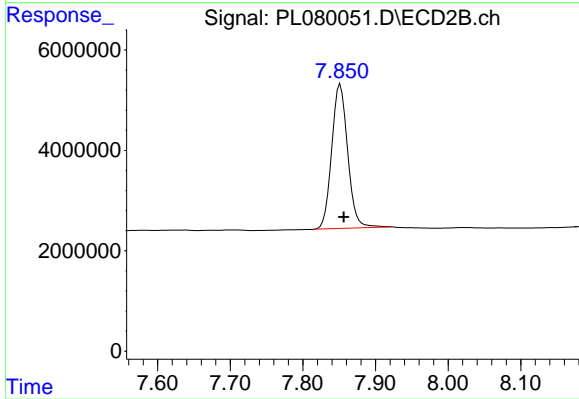
#1 Tetrachloro-m-xylene

R.T.: 2.695 min
 Delta R.T.: -0.001 min
 Response: 40690955
 Conc: 22.15 ng/ml



#28 Decachlorobiphenyl

R.T.: 8.817 min
 Delta R.T.: 0.009 min
 Response: 33991039
 Conc: 24.18 ng/ml



#28 Decachlorobiphenyl

R.T.: 7.852 min
 Delta R.T.: -0.004 min
 Response: 43927400
 Conc: 26.27 ng/ml