

Data Path : Z:\pestpcbsrv\HPCHEM1\ECD_L\Data\PL010423\
 Data File : PL080064.D
 Signal(s) : Signal #1: ECD1A.ch Signal #2: ECD2B.ch
 Acq On : 04 Jan 2023 19:14
 Operator : AR\AJ
 Sample : I.BLK
 Misc :
 ALS Vial : 2 Sample Multiplier: 1

Instrument :
 ECD_L
 ClientSampleId :
 I.BLK

Integration File signal 1: autoint1.e
 Integration File signal 2: autoint2.e
 Quant Time: Jan 05 05:46:41 2023
 Quant Method : Z:\pestpcbsrv\HPCHEM1\ECD_L\methods\PL010423.M
 Quant Title : GC Extractables
 QLast Update : Thu Jan 05 05:11:24 2023
 Response via : Initial Calibration
 Integrator: ChemStation

Volume Inj. : 1 µl
 Signal #1 Phase : ZB-MR2 Signal #2 Phase: ZB-MR1
 Signal #1 Info : 30M x 0.32mm x0.2 Signal #2 Info : 30M x 0.32mm x0.5µm

Compound	RT#1	RT#2	Resp#1	Resp#2	ng/ml	ng/ml

System Monitoring Compounds						
1) SA Tetrachlo...	3.370	2.694	39684045	45581310	19.950	20.046
28) SA Decachlor...	8.879	7.849	36219292	47461271	21.110	21.007

Target Compounds

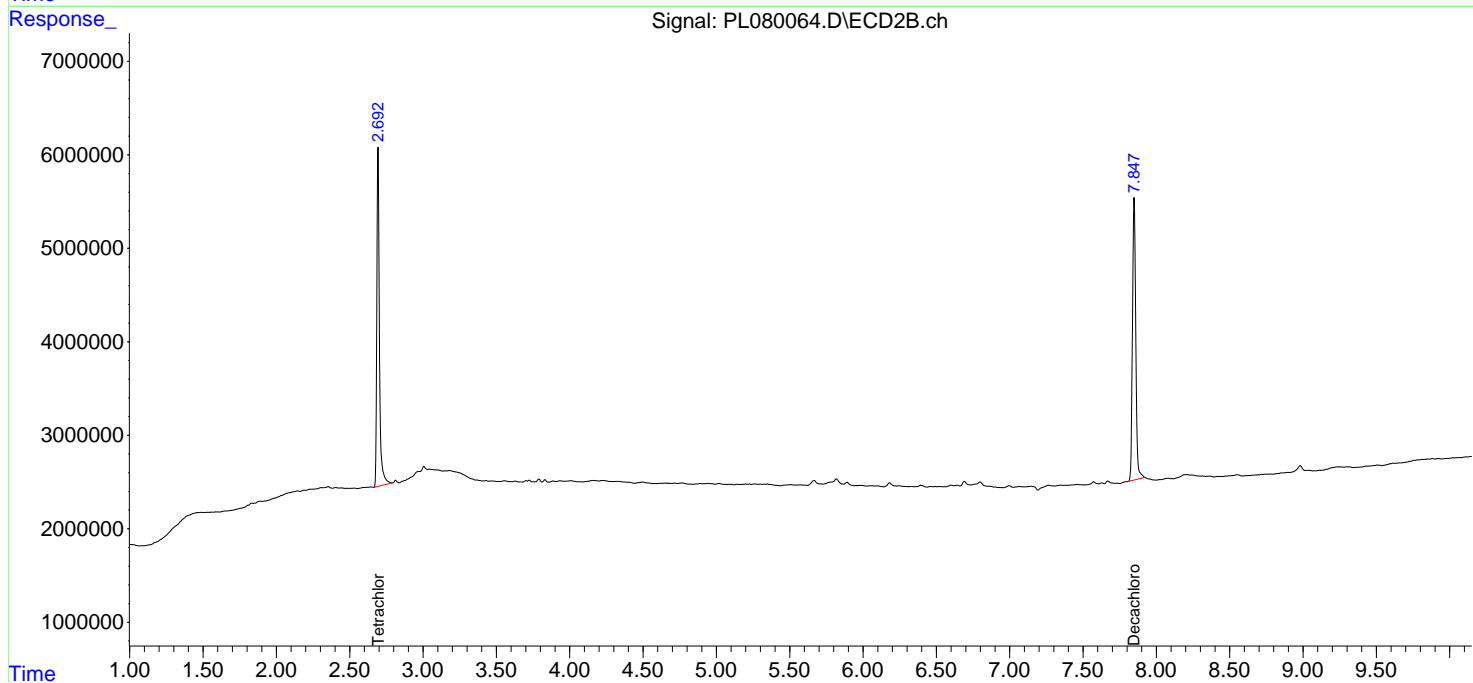
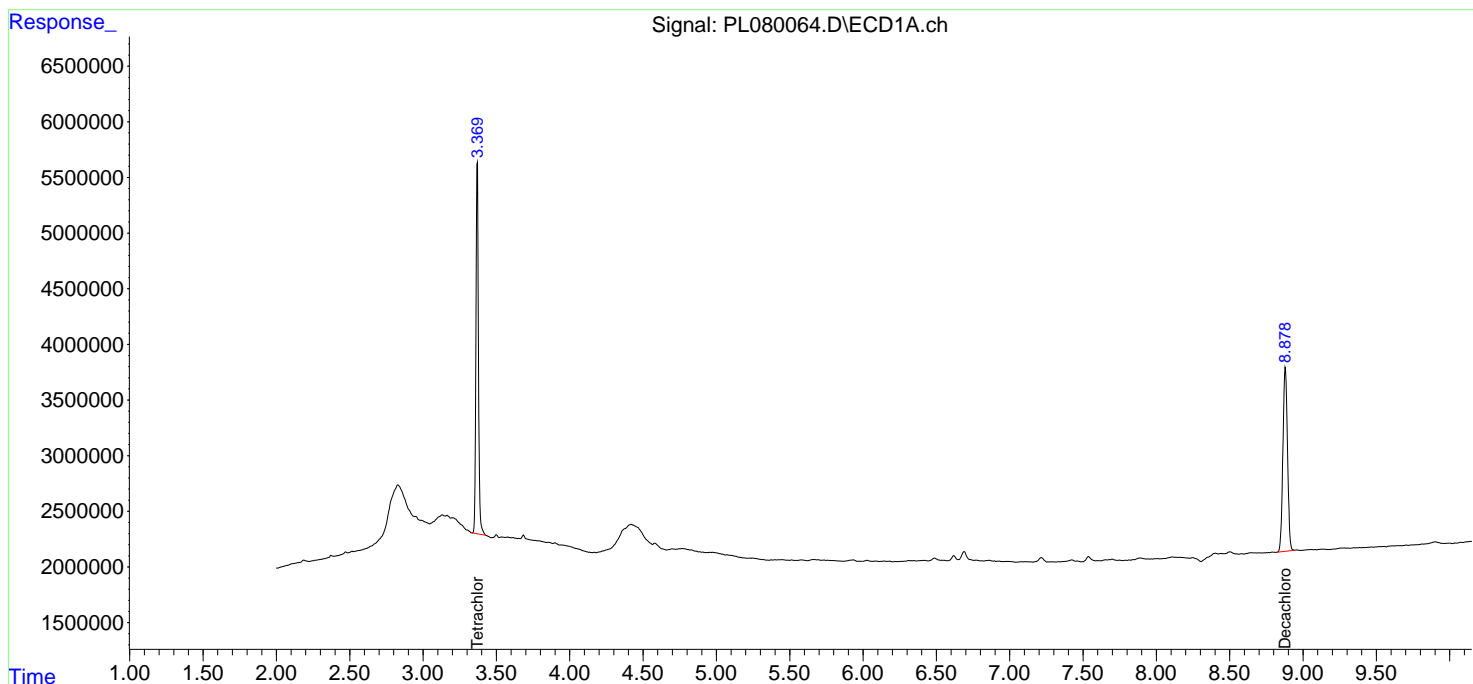
(f)=RT Delta > 1/2 Window (#)=Amounts differ by > 25% (m)=manual int.

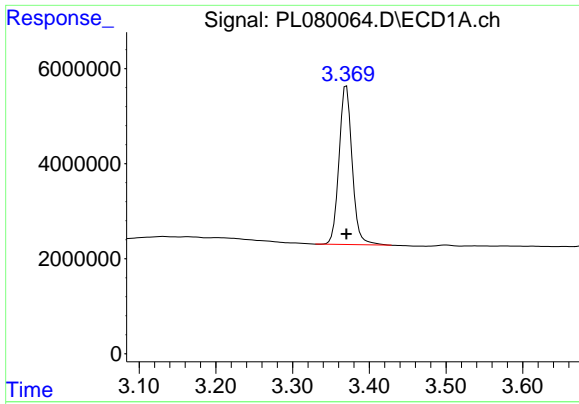
Data Path : Z:\pestpcbsrv\HPCHEM1\ECD_L\Data\PL010423\
 Data File : PL080064.D
 Signal(s) : Signal #1: ECD1A.ch Signal #2: ECD2B.ch
 Acq On : 04 Jan 2023 19:14
 Operator : AR\AJ
 Sample : I.BLK
 Misc :
 ALS Vial : 2 Sample Multiplier: 1

Instrument :
 ECD_L
 ClientSampleId :
 I.BLK

Integration File signal 1: autoint1.e
 Integration File signal 2: autoint2.e
 Quant Time: Jan 05 05:46:41 2023
 Quant Method : Z:\pestpcbsrv\HPCHEM1\ECD_L\methods\PL010423.M
 Quant Title : GC Extractables
 QLast Update : Thu Jan 05 05:11:24 2023
 Response via : Initial Calibration
 Integrator: ChemStation

Volume Inj. : 1 µl
 Signal #1 Phase : ZB-MR2 Signal #2 Phase: ZB-MR1
 Signal #1 Info : 30M x 0.32mm x0.2 Signal #2 Info : 30M x 0.32mm x0.5µm

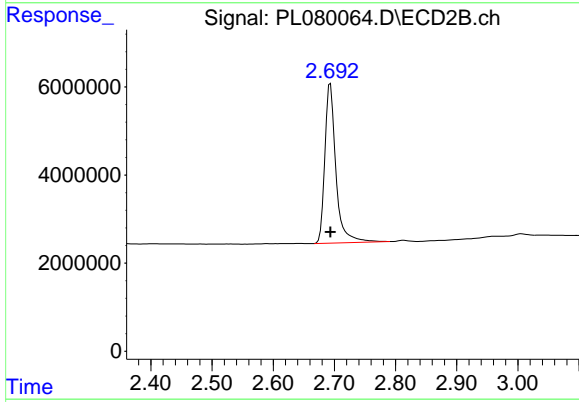




#1 Tetrachloro-m-xylene

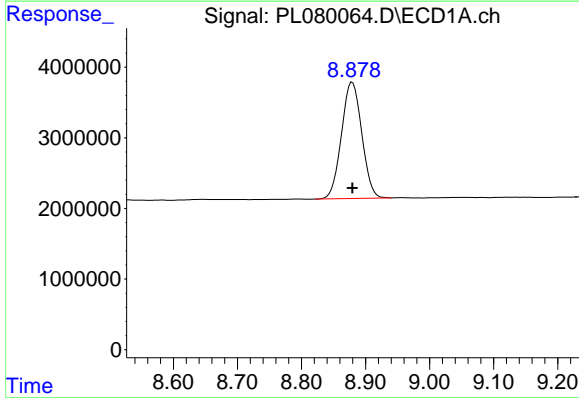
R.T.: 3.370 min
Delta R.T.: 0.000 min
Response: 39684045
Conc: 19.95 ng/ml

Instrument :
ECD_L
ClientSampleId :
I.BLK



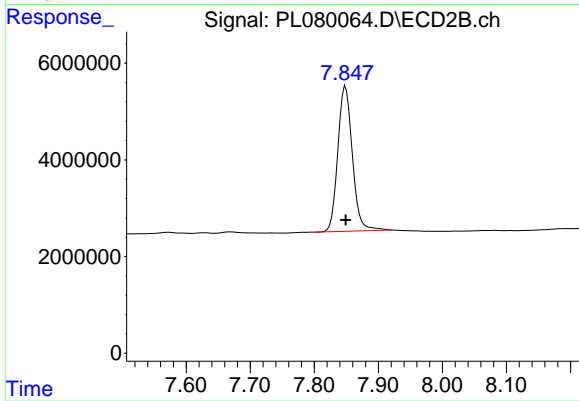
#1 Tetrachloro-m-xylene

R.T.: 2.694 min
Delta R.T.: 0.000 min
Response: 45581310
Conc: 20.05 ng/ml



#28 Decachlorobiphenyl

R.T.: 8.879 min
Delta R.T.: 0.000 min
Response: 36219292
Conc: 21.11 ng/ml



#28 Decachlorobiphenyl

R.T.: 7.849 min
Delta R.T.: 0.000 min
Response: 47461271
Conc: 21.01 ng/ml