

Data Path : Z:\pestpcbsrv\HPCHEM1\ECD_L\Data\PL010423\
 Data File : PL080068.D
 Signal(s) : Signal #1: ECD1A.ch Signal #2: ECD2B.ch
 Acq On : 04 Jan 2023 20:10
 Operator : AR\AJ
 Sample : PSTDICC075
 Misc :
 ALS Vial : 6 Sample Multiplier: 1

Instrument :
 ECD_L
 ClientSampleId :
 PSTDICC075

Integration File signal 1: autoint1.e
 Integration File signal 2: autoint2.e
 Quant Time: Jan 05 04:37:26 2023
 Quant Method : Z:\pestpcbsrv\HPCHEM1\ECD_L\methods\PL010423.M
 Quant Title : GC Extractables
 QLast Update : Thu Jan 05 04:37:18 2023
 Response via : Initial Calibration
 Integrator: ChemStation

Volume Inj. : 1 µl
 Signal #1 Phase : ZB-MR2 Signal #2 Phase: ZB-MR1
 Signal #1 Info : 30M x 0.32mm x0.2 Signal #2 Info : 30M x 0.32mm x0.5µm

	Compound	RT#1	RT#2	Resp#1	Resp#2	ng/ml	ng/ml

System Monitoring Compounds							
1)	SA Tetrachlo...	3.371	2.694	151.8E6	174.9E6	74.603	74.308
28)	SA Decachlor...	8.880	7.849	123.5E6	164.4E6	74.604	74.329
Target Compounds							
2)	A alpha-BHC	3.822	3.195	228.2E6	265.6E6	74.752	74.591
3)	MA gamma-BHC...	4.153	3.524	155.4E6	245.0E6	74.392	74.487
4)	MA Heptachlor	4.741	3.867	170.1E6	244.7E6	74.288	74.612
5)	MB Aldrin	5.082	4.147	153.4E6	235.6E6	74.373	74.635
6)	B beta-BHC	4.351	3.819	67045878	103.2E6	74.747	74.414
7)	B delta-BHC	4.596	4.050	159.9E6	237.6E6	74.570	74.586
8)	B Heptachlo...	5.511	4.649	136.5E6	212.7E6	74.382	74.504
9)	A Endosulfan I	5.896	5.019	127.8E6	200.8E6	74.338	74.580
10)	B gamma-Chl...	5.768	4.900	136.3E6	218.0E6	74.451	74.702
11)	B alpha-Chl...	5.848	4.965	135.1E6	217.2E6	74.527	74.645
12)	B 4,4'-DDE	6.031	5.158	121.6E6	187.0E6	74.609	74.668
13)	MA Dieldrin	6.173	5.284	130.5E6	207.5E6	74.374	74.616
14)	MA Endrin	6.402	5.559	116.8E6	178.5E6	74.318	74.716
15)	B Endosulfa...	6.625	5.852	113.4E6	168.4E6	74.482	74.462
16)	A 4,4'-DDD	6.552	5.711	101.5E6	149.5E6	74.549	74.394
17)	MA 4,4'-DDT	6.869	5.964	114.5E6	162.9E6	74.702	74.814
18)	B Endrin al...	6.756	6.033	89976129	133.3E6	74.594	74.417
19)	B Endosulfa...	6.993	6.255	121.1E6	170.3E6	74.658	74.503
20)	A Methoxychlor	7.359	6.543	65886991	87061353	74.479	74.446
21)	B Endrin ke...	7.477	6.761	134.1E6	188.0E6	74.552	74.500
22)	Mirex	7.953	6.947	110.0E6	152.5E6	74.276	74.289

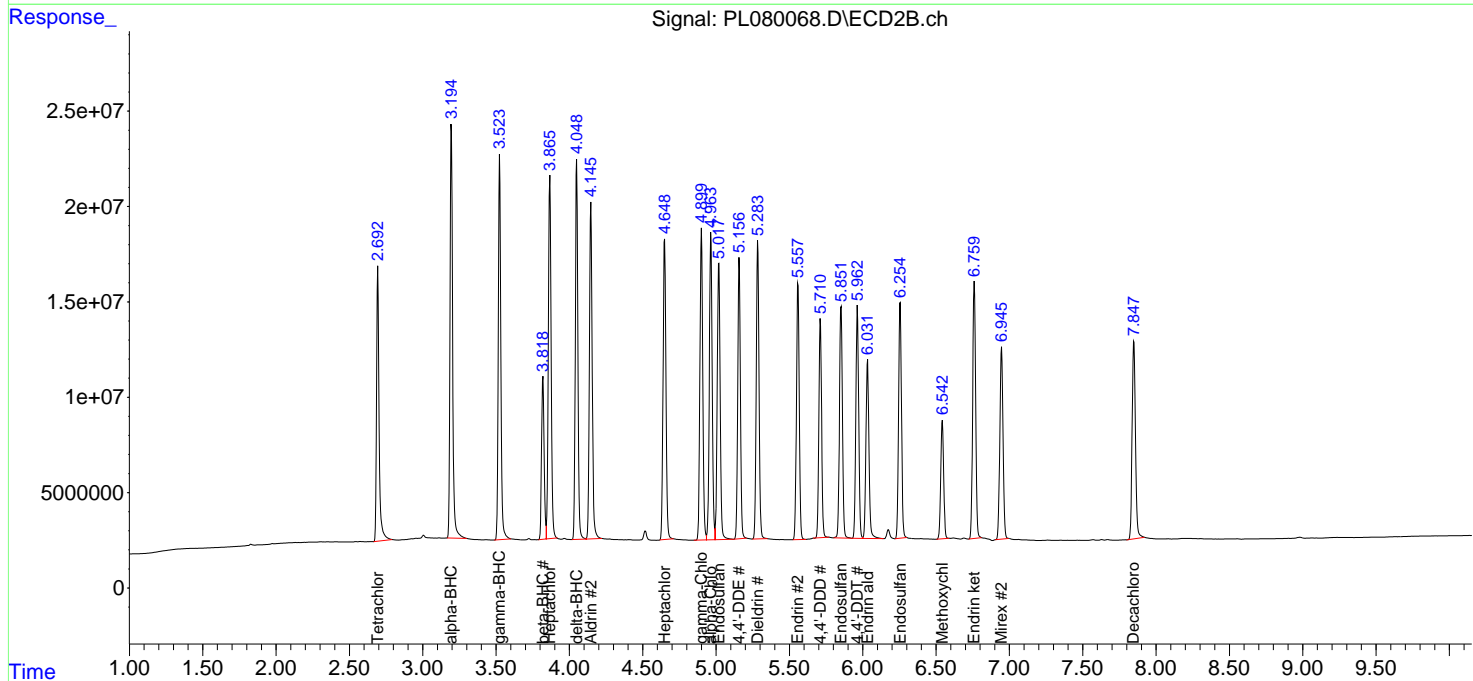
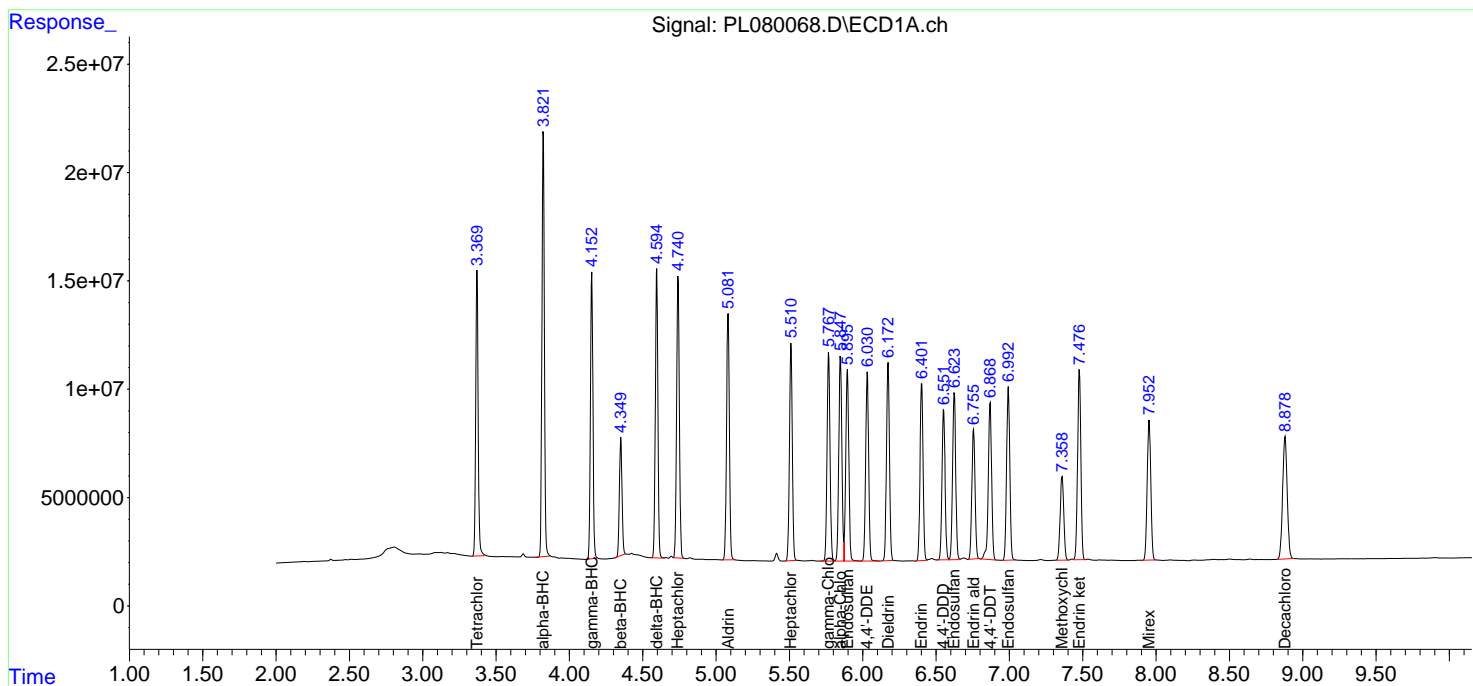
(f)=RT Delta > 1/2 Window (#)=Amounts differ by > 25% (m)=manual int.

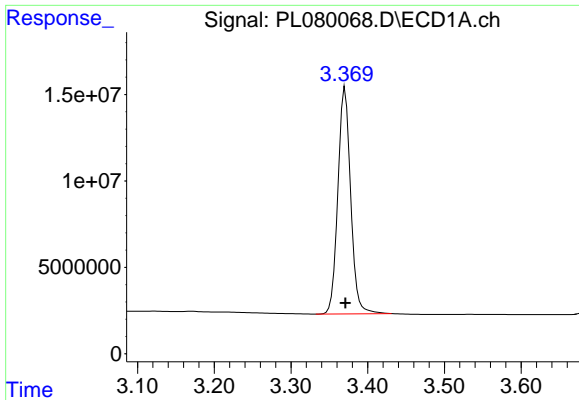
Data Path : Z:\pestpcbsrv\HPCHEM1\ECD_L\Data\PL010423\
 Data File : PL080068.D
 Signal(s) : Signal #1: ECD1A.ch Signal #2: ECD2B.ch
 Acq On : 04 Jan 2023 20:10
 Operator : AR\AJ
 Sample : PSTDICC075
 Misc :
 ALS Vial : 6 Sample Multiplier: 1

Instrument :
 ECD_L
 ClientSampleId :
 PSTDICC075

Integration File signal 1: autoint1.e
 Integration File signal 2: autoint2.e
 Quant Time: Jan 05 04:37:26 2023
 Quant Method : Z:\pestpcbsrv\HPCHEM1\ECD_L\methods\PL010423.M
 Quant Title : GC Extractables
 QLast Update : Thu Jan 05 04:37:18 2023
 Response via : Initial Calibration
 Integrator: ChemStation

Volume Inj. : 1 µl
 Signal #1 Phase : ZB-MR2 Signal #2 Phase: ZB-MR1
 Signal #1 Info : 30M x 0.32mm x0.2 Signal #2 Info : 30M x 0.32mm x0.5µm

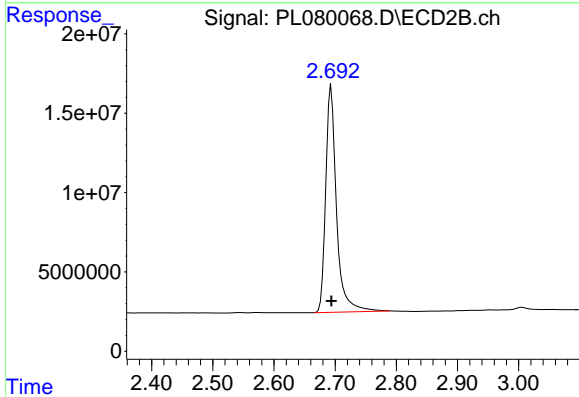




#1 Tetrachloro-m-xylene

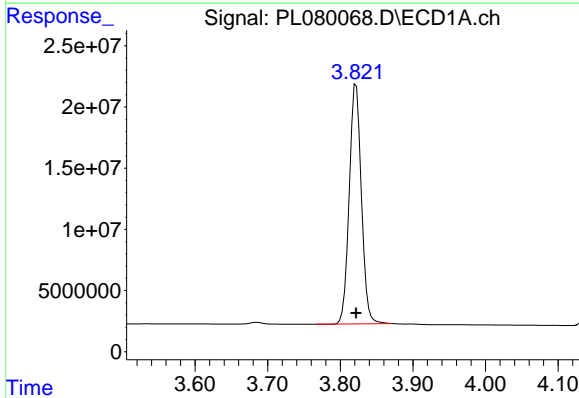
R.T.: 3.371 min
 Delta R.T.: 0.000 min
 Response: 151815535
 Conc: 74.60 ng/ml

Instrument :
 ECD_L
 ClientSampleId :
 PSTDICC075



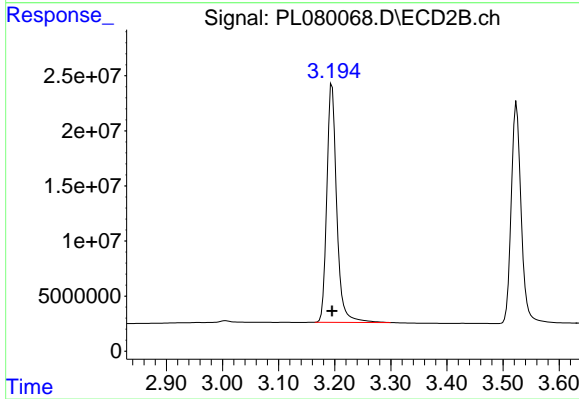
#1 Tetrachloro-m-xylene

R.T.: 2.694 min
 Delta R.T.: 0.000 min
 Response: 174891072
 Conc: 74.31 ng/ml



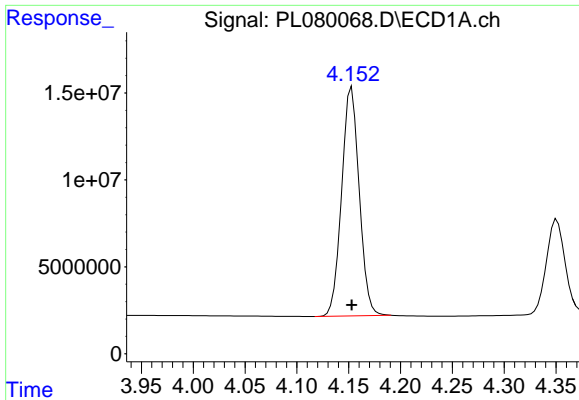
#2 alpha-BHC

R.T.: 3.822 min
 Delta R.T.: 0.000 min
 Response: 228232970
 Conc: 74.75 ng/ml



#2 alpha-BHC

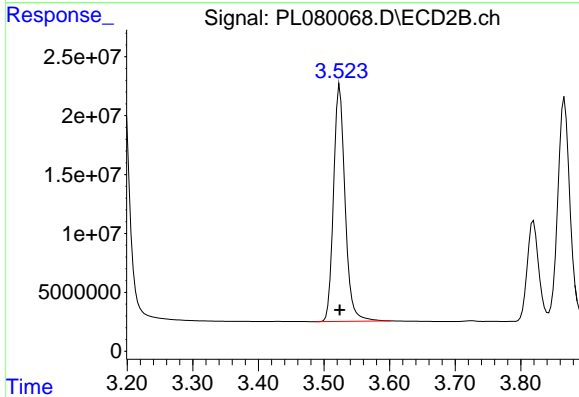
R.T.: 3.195 min
 Delta R.T.: 0.000 min
 Response: 265603313
 Conc: 74.59 ng/ml



#3 gamma-BHC (Lindane)

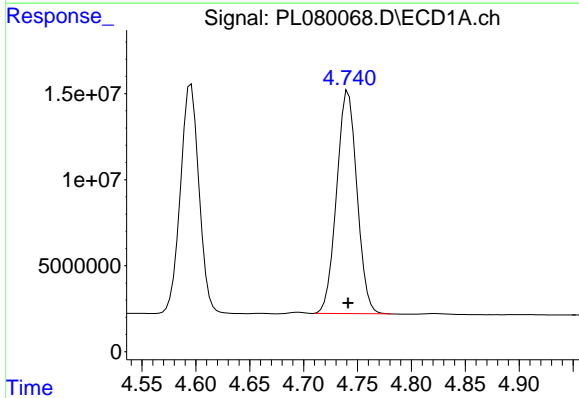
R.T.: 4.153 min
 Delta R.T.: 0.000 min
 Response: 155428009
 Conc: 74.39 ng/ml

Instrument :
 ECD_L
 ClientSampleId :
 PSTDICC075



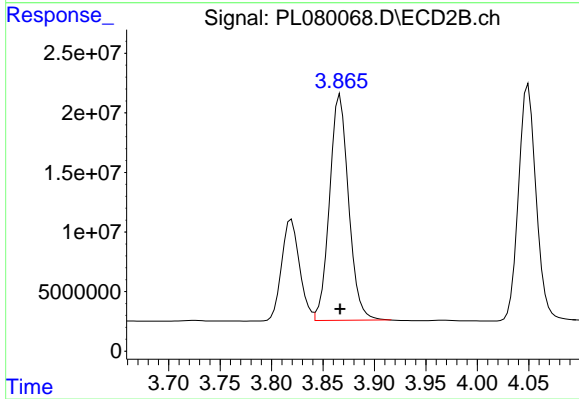
#3 gamma-BHC (Lindane)

R.T.: 3.524 min
 Delta R.T.: 0.000 min
 Response: 244988060
 Conc: 74.49 ng/ml



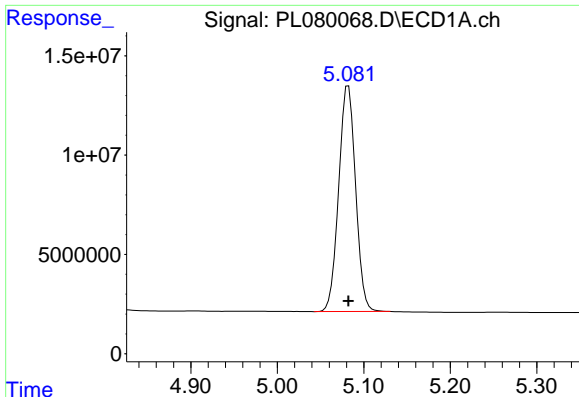
#4 Heptachlor

R.T.: 4.741 min
 Delta R.T.: 0.000 min
 Response: 170144747
 Conc: 74.29 ng/ml



#4 Heptachlor

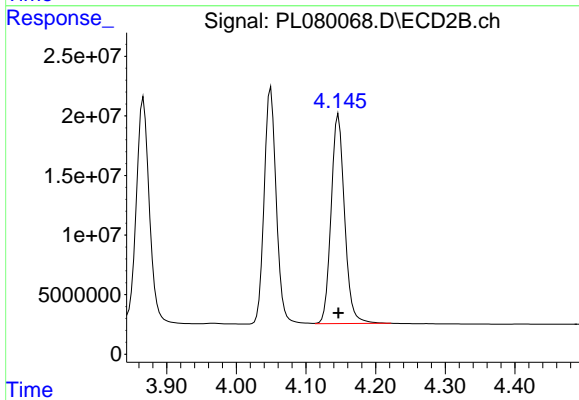
R.T.: 3.867 min
 Delta R.T.: 0.000 min
 Response: 244749933
 Conc: 74.61 ng/ml



#5 Aldrin

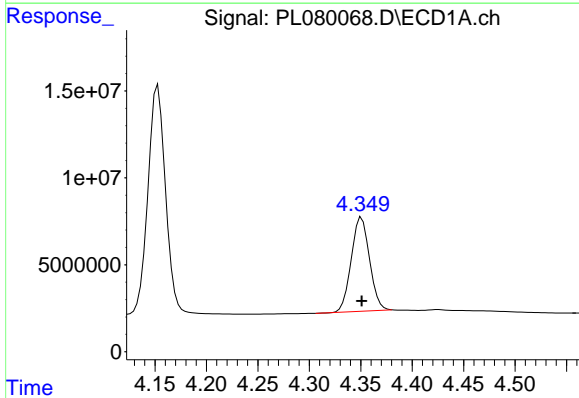
R.T.: 5.082 min
 Delta R.T.: 0.000 min
 Response: 153353403
 Conc: 74.37 ng/ml

Instrument :
 ECD_L
 ClientSampleId :
 PSTDICC075



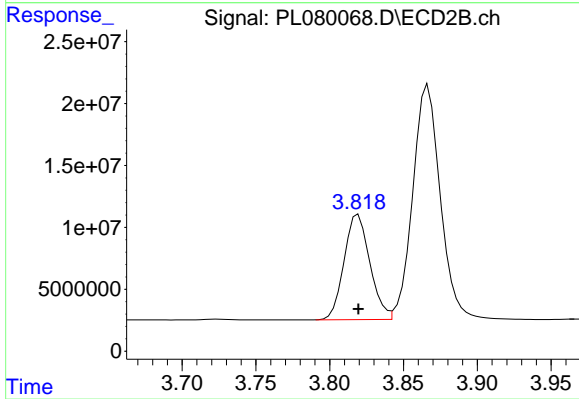
#5 Aldrin

R.T.: 4.147 min
 Delta R.T.: 0.000 min
 Response: 235566475
 Conc: 74.63 ng/ml



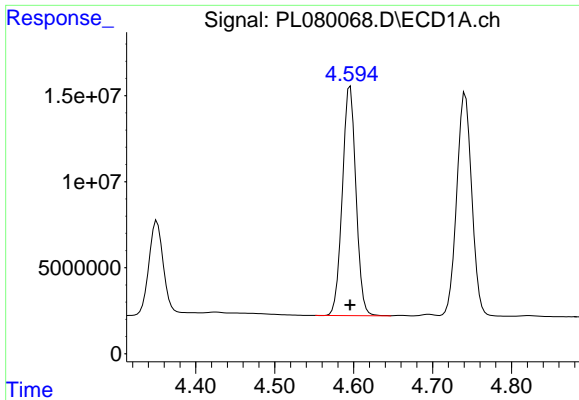
#6 beta-BHC

R.T.: 4.351 min
 Delta R.T.: 0.000 min
 Response: 67045878
 Conc: 74.75 ng/ml



#6 beta-BHC

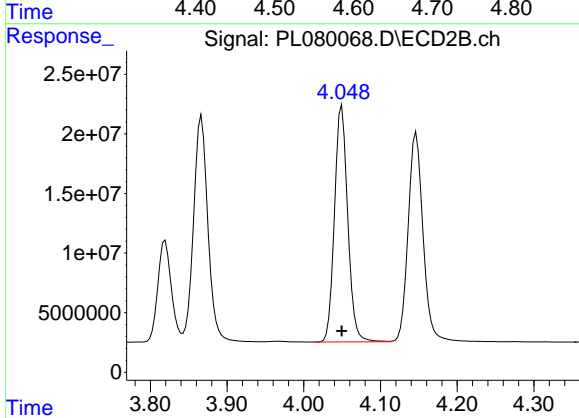
R.T.: 3.819 min
 Delta R.T.: 0.000 min
 Response: 103193755
 Conc: 74.41 ng/ml



#7 delta-BHC

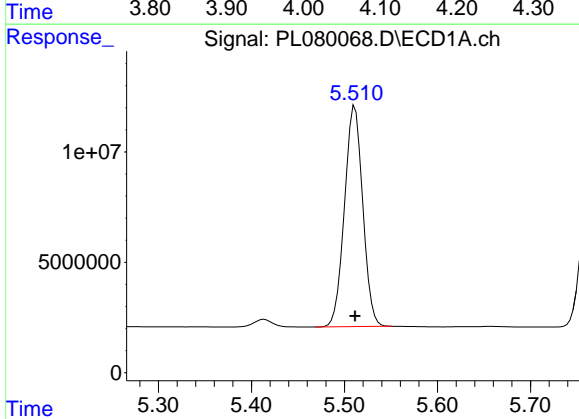
R.T.: 4.596 min
 Delta R.T.: 0.000 min
 Response: 159863729
 Conc: 74.57 ng/ml

Instrument :
 ECD_L
 ClientSampleId :
 PSTDICC075



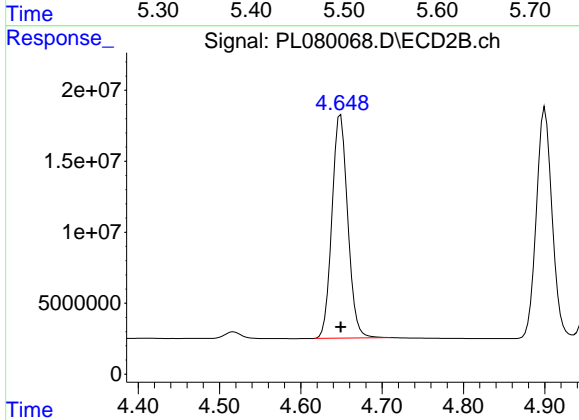
#7 delta-BHC

R.T.: 4.050 min
 Delta R.T.: 0.000 min
 Response: 237576358
 Conc: 74.59 ng/ml



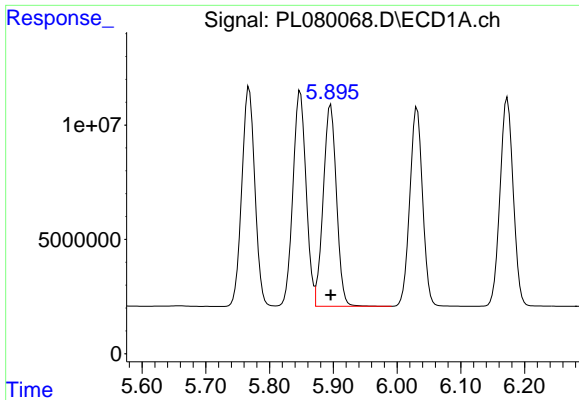
#8 Heptachlor epoxide

R.T.: 5.511 min
 Delta R.T.: 0.000 min
 Response: 136481028
 Conc: 74.38 ng/ml



#8 Heptachlor epoxide

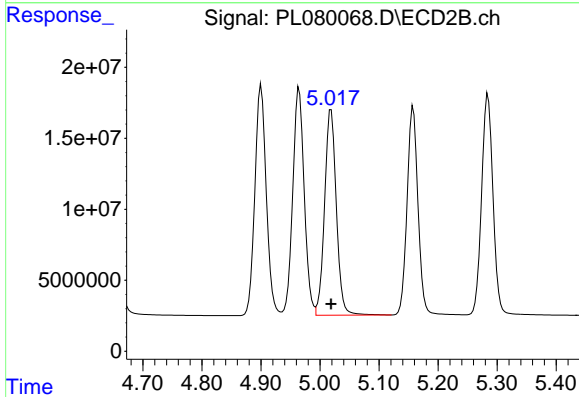
R.T.: 4.649 min
 Delta R.T.: 0.000 min
 Response: 212653668
 Conc: 74.50 ng/ml



#9 Endosulfan I

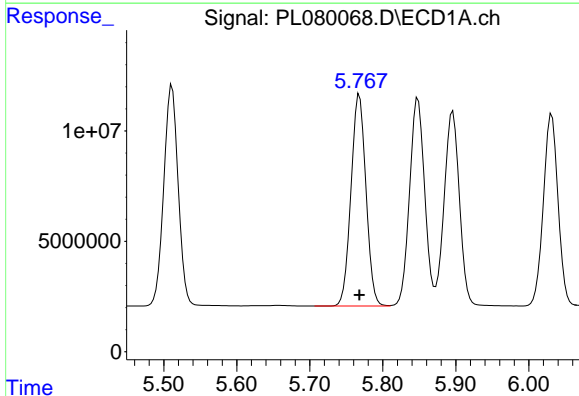
R.T.: 5.896 min
 Delta R.T.: 0.000 min
 Response: 127798848
 Conc: 74.34 ng/ml

Instrument :
 ECD_L
 ClientSampleId :
 PSTDICC075



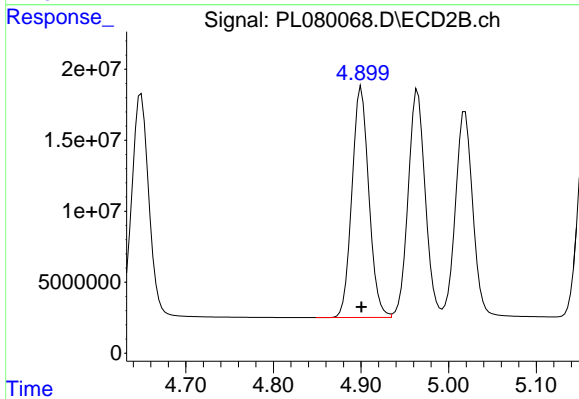
#9 Endosulfan I

R.T.: 5.019 min
 Delta R.T.: 0.000 min
 Response: 200760890
 Conc: 74.58 ng/ml



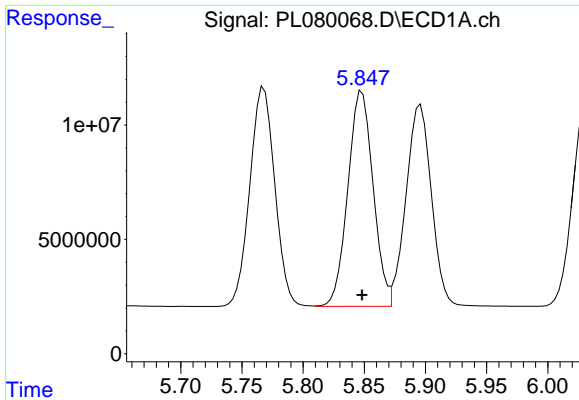
#10 gamma-Chlordane

R.T.: 5.768 min
 Delta R.T.: 0.000 min
 Response: 136340192
 Conc: 74.45 ng/ml



#10 gamma-Chlordane

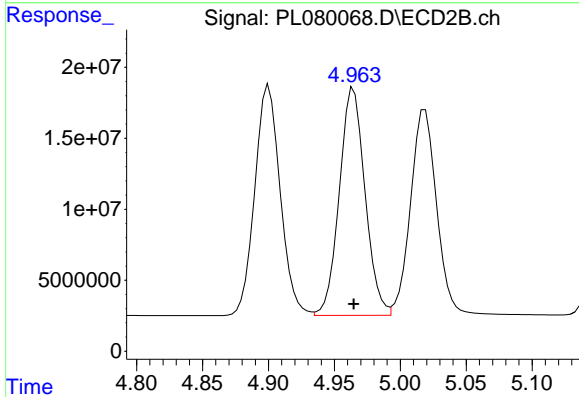
R.T.: 4.900 min
 Delta R.T.: 0.000 min
 Response: 218047775
 Conc: 74.70 ng/ml



#11 alpha-Chlordane

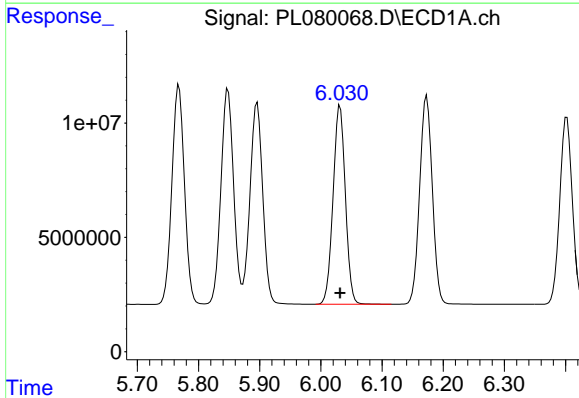
R.T.: 5.848 min
 Delta R.T.: 0.000 min
 Response: 135140772
 Conc: 74.53 ng/ml

Instrument :
 ECD_L
 ClientSampleId :
 PSTDICC075



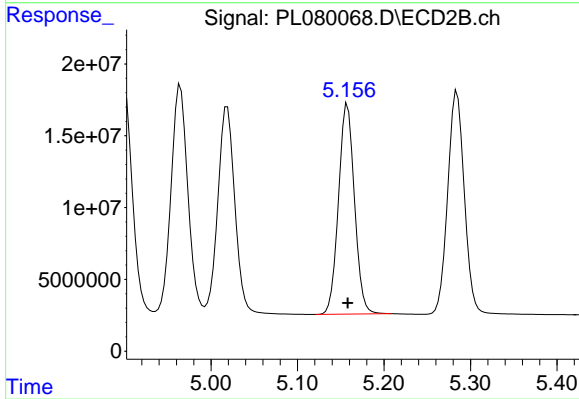
#11 alpha-Chlordane

R.T.: 4.965 min
 Delta R.T.: 0.000 min
 Response: 217196698
 Conc: 74.65 ng/ml



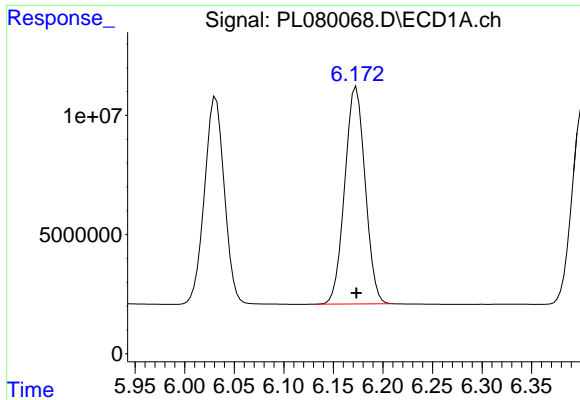
#12 4,4'-DDE

R.T.: 6.031 min
 Delta R.T.: 0.000 min
 Response: 121590733
 Conc: 74.61 ng/ml



#12 4,4'-DDE

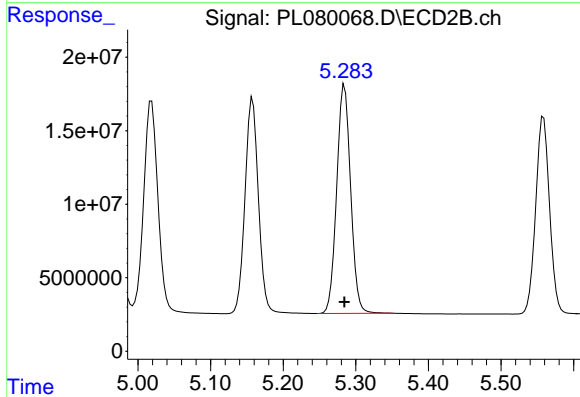
R.T.: 5.158 min
 Delta R.T.: 0.000 min
 Response: 186950049
 Conc: 74.67 ng/ml



#13 Dieldrin

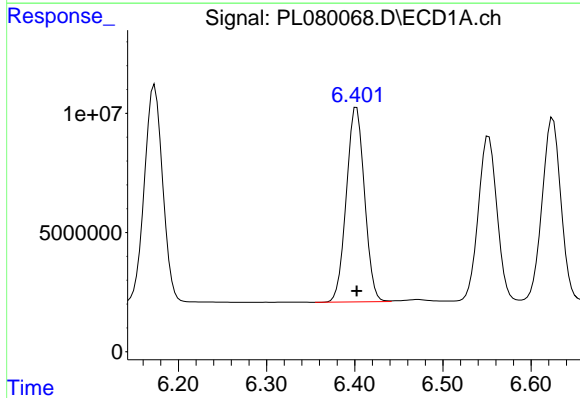
R.T.: 6.173 min
 Delta R.T.: 0.000 min
 Response: 130540336
 Conc: 74.37 ng/ml

Instrument :
 ECD_L
 ClientSampleId :
 PSTDICC075



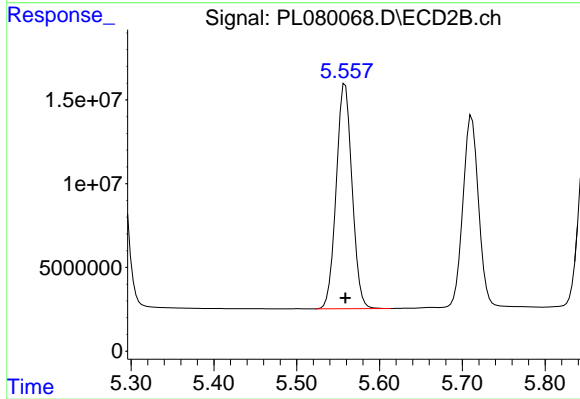
#13 Dieldrin

R.T.: 5.284 min
 Delta R.T.: 0.000 min
 Response: 207507785
 Conc: 74.62 ng/ml



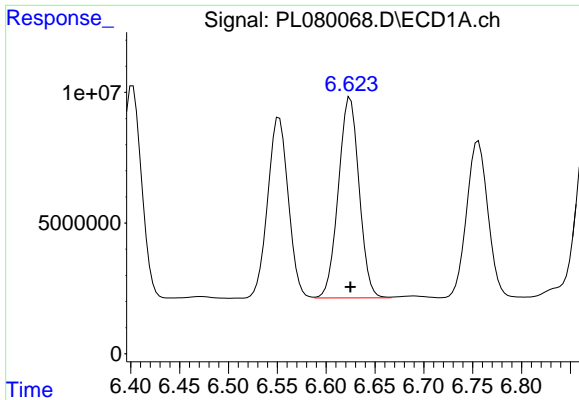
#14 Endrin

R.T.: 6.402 min
 Delta R.T.: 0.000 min
 Response: 116823247
 Conc: 74.32 ng/ml



#14 Endrin

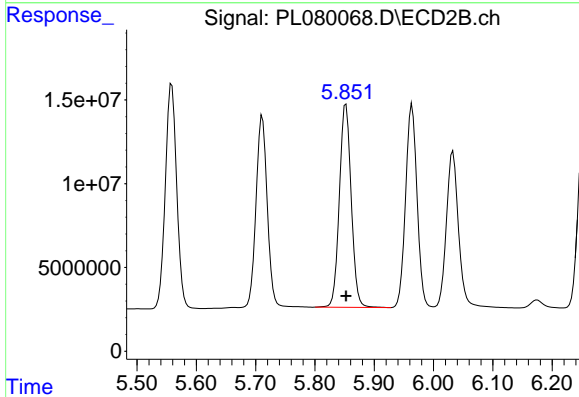
R.T.: 5.559 min
 Delta R.T.: 0.000 min
 Response: 178521626
 Conc: 74.72 ng/ml



#15 Endosulfan II

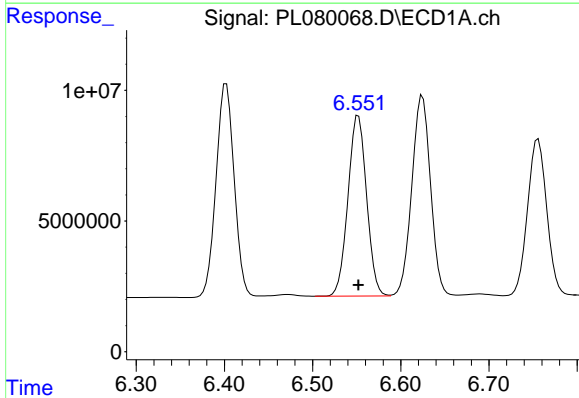
R.T.: 6.625 min
 Delta R.T.: 0.000 min
 Response: 113445172
 Conc: 74.48 ng/ml

Instrument :
 ECD_L
 ClientSampleId :
 PSTDICC075



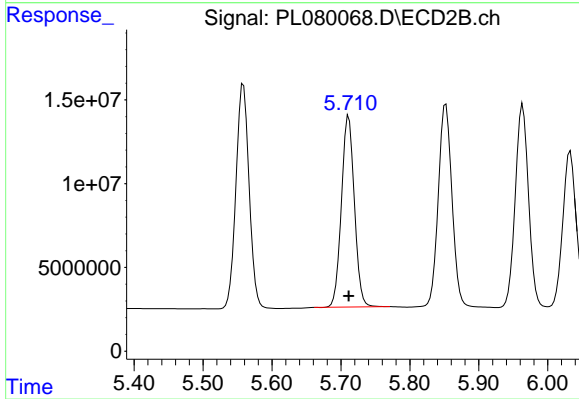
#15 Endosulfan II

R.T.: 5.852 min
 Delta R.T.: 0.000 min
 Response: 168365704
 Conc: 74.46 ng/ml



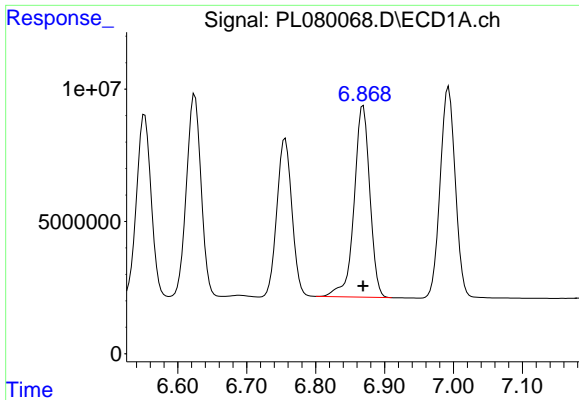
#16 4,4'-DDD

R.T.: 6.552 min
 Delta R.T.: 0.000 min
 Response: 101532183
 Conc: 74.55 ng/ml



#16 4,4'-DDD

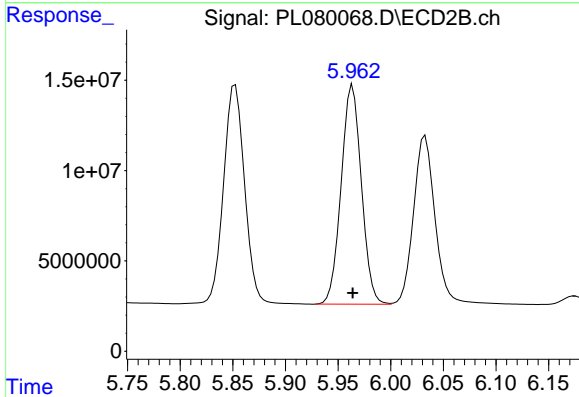
R.T.: 5.711 min
 Delta R.T.: 0.000 min
 Response: 149460954
 Conc: 74.39 ng/ml



#17 4,4'-DDT

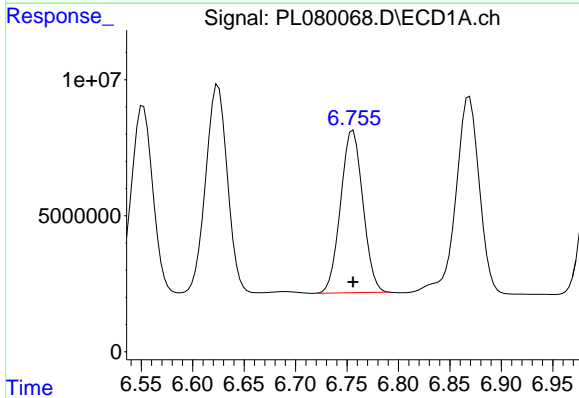
R.T.: 6.869 min
 Delta R.T.: 0.000 min
 Response: 114477017
 Conc: 74.70 ng/ml

Instrument :
 ECD_L
 ClientSampleId :
 PSTDICC075



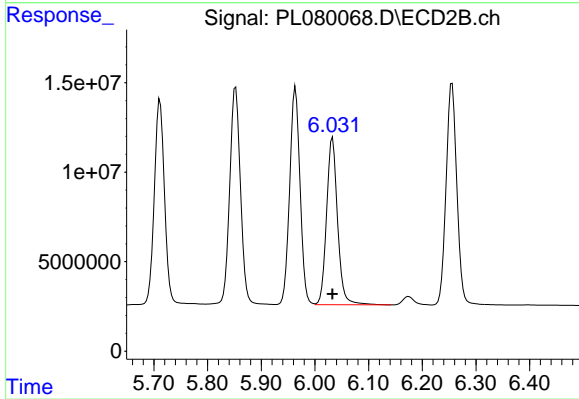
#17 4,4'-DDT

R.T.: 5.964 min
 Delta R.T.: 0.000 min
 Response: 162898989
 Conc: 74.81 ng/ml



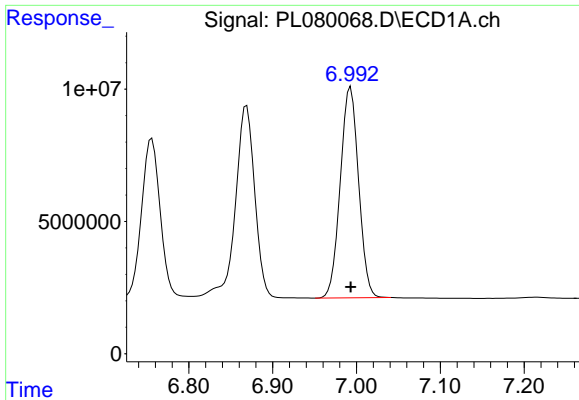
#18 Endrin aldehyde

R.T.: 6.756 min
 Delta R.T.: 0.000 min
 Response: 89976129
 Conc: 74.59 ng/ml



#18 Endrin aldehyde

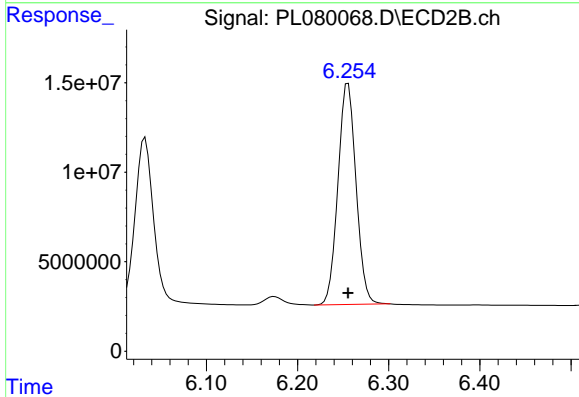
R.T.: 6.033 min
 Delta R.T.: 0.000 min
 Response: 133279561
 Conc: 74.42 ng/ml



#19 Endosulfan Sulfate

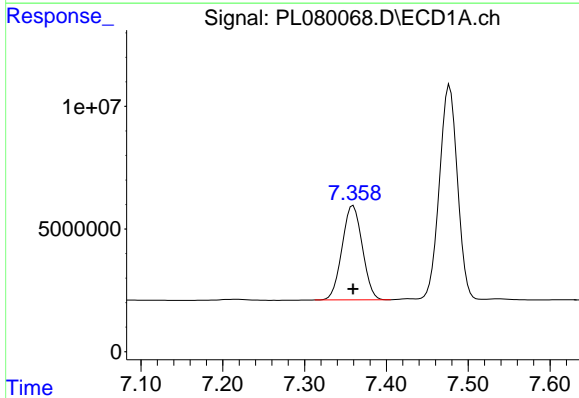
R.T.: 6.993 min
 Delta R.T.: 0.000 min
 Response: 121127432
 Conc: 74.66 ng/ml

Instrument :
 ECD_L
 ClientSampleId :
 PSTDICC075



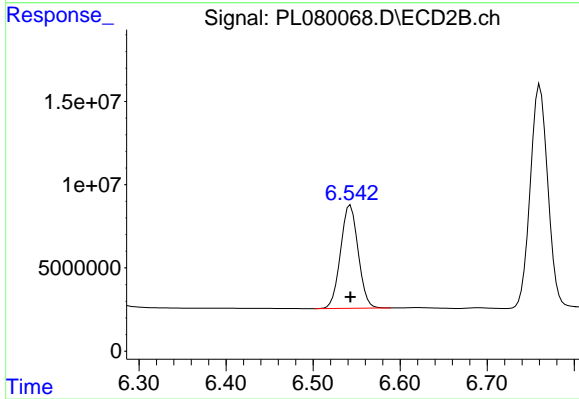
#19 Endosulfan Sulfate

R.T.: 6.255 min
 Delta R.T.: 0.000 min
 Response: 170293486
 Conc: 74.50 ng/ml



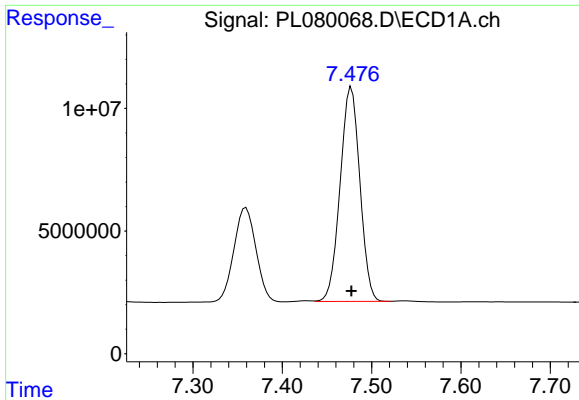
#20 Methoxychlor

R.T.: 7.359 min
 Delta R.T.: 0.000 min
 Response: 65886991
 Conc: 74.48 ng/ml



#20 Methoxychlor

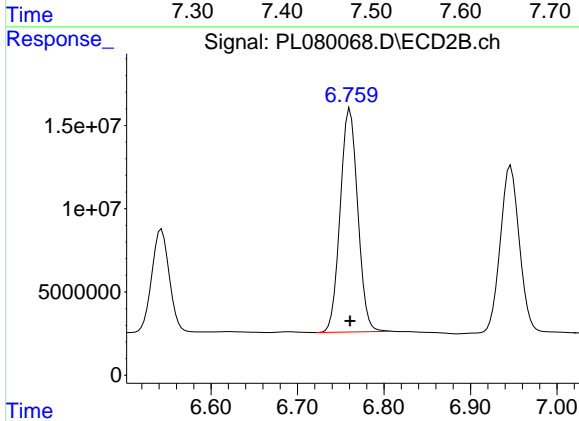
R.T.: 6.543 min
 Delta R.T.: 0.000 min
 Response: 87061353
 Conc: 74.45 ng/ml



#21 Endrin ketone

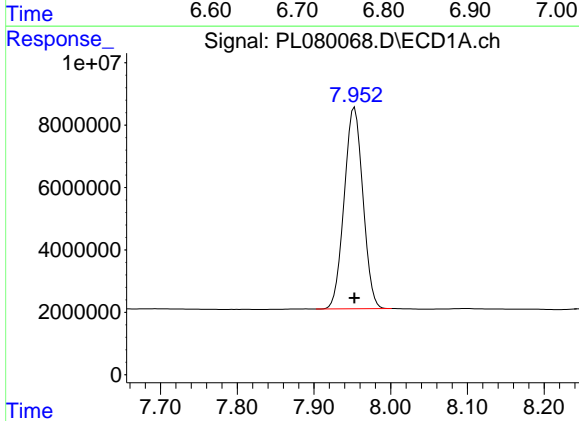
R.T.: 7.477 min
 Delta R.T.: 0.000 min
 Response: 134073433
 Conc: 74.55 ng/ml

Instrument :
 ECD_L
 ClientSampleId :
 PSTDICC075



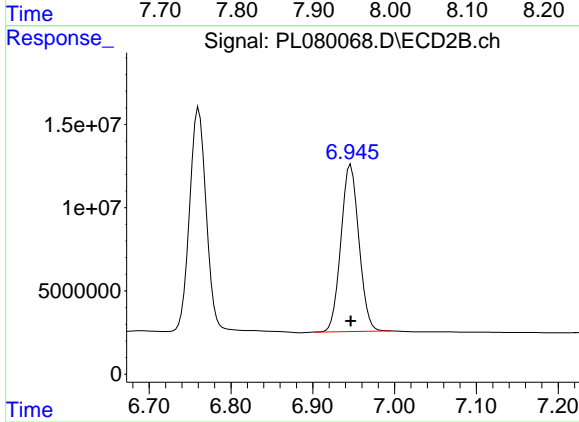
#21 Endrin ketone

R.T.: 6.761 min
 Delta R.T.: 0.000 min
 Response: 188025871
 Conc: 74.50 ng/ml



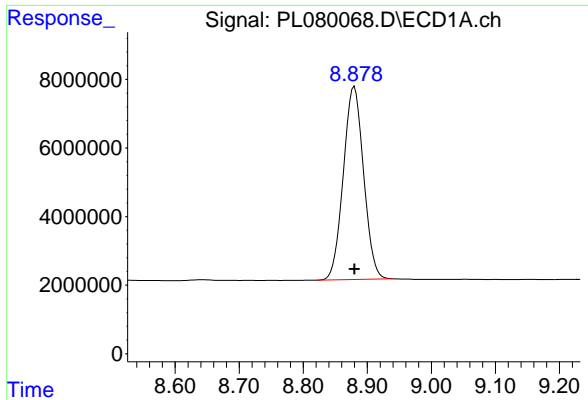
#22 Mirex

R.T.: 7.953 min
 Delta R.T.: 0.000 min
 Response: 109986116
 Conc: 74.28 ng/ml



#22 Mirex

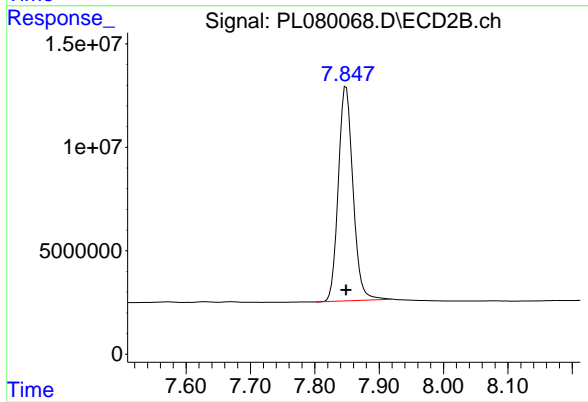
R.T.: 6.947 min
 Delta R.T.: 0.000 min
 Response: 152519106
 Conc: 74.29 ng/ml



#28 Decachlorobiphenyl

R.T.: 8.880 min
Delta R.T.: 0.000 min
Response: 123511917
Conc: 74.60 ng/ml

Instrument :
ECD_L
ClientSampleId :
PSTDICC075



#28 Decachlorobiphenyl

R.T.: 7.849 min
Delta R.T.: 0.000 min
Response: 164422411
Conc: 74.33 ng/ml