

Data Path : Z:\pestpcbsrv\HPCHEM1\ECD_L\Data\PL010523\
 Data File : PL080132.D
 Signal(s) : Signal #1: ECD1A.ch Signal #2: ECD2B.ch
 Acq On : 05 Jan 2023 19:29
 Operator : AR\AJ
 Sample : PSTDCCC050
 Misc :
 ALS Vial : 4 Sample Multiplier: 1

Instrument :
 ECD_L
 ClientSampleId :

Integration File signal 1: autoint1.e
 Integration File signal 2: autoint2.e
 Quant Time: Jan 05 20:37:35 2023
 Quant Method : Z:\pestpcbsrv\HPCHEM1\ECD_L\methods\PL010423.M
 Quant Title : GC Extractables
 QLast Update : Thu Jan 05 05:11:24 2023
 Response via : Initial Calibration
 Integrator: ChemStation

Volume Inj. : 1 µl
 Signal #1 Phase : ZB-MR2 Signal #2 Phase: ZB-MR1
 Signal #1 Info : 30M x 0.32mm x0.2 Signal #2 Info : 30M x 0.32mm x0.5µm

	Compound	RT#1	RT#2	Resp#1	Resp#2	ng/ml	ng/ml

System Monitoring Compounds							
1)	SA Tetrachlo...	3.371	2.693	101.8E6	108.7E6	51.199	47.783
28)	SA Decachlor...	8.882	7.846	81647526	106.0E6	47.587	46.914
Target Compounds							
2)	A alpha-BHC	3.822	3.195	148.3E6	158.8E6	51.922	47.413
3)	MA gamma-BHC...	4.153	3.523	107.9E6	147.8E6	54.884	48.210
4)	MA Heptachlor	4.742	3.865	112.6E6	149.8E6	50.632	48.261
5)	MB Aldrin	5.082	4.145	101.8E6	145.8E6	51.309	49.407
6)	B beta-BHC	4.351	3.819	45414284	64655673	49.613	48.192
7)	B delta-BHC	4.596	4.049	102.9E6	143.9E6	51.212	48.940
8)	B Heptachlo...	5.512	4.647	94919633	130.8E6	52.166	47.761
9)	A Endosulfan I	5.896	5.017	87133193	121.5E6	50.778	46.891
10)	B gamma-Chl...	5.769	4.899	92776147	133.0E6	51.424	47.644
11)	B alpha-Chl...	5.849	4.963	91834576	133.1E6	51.066	47.622
12)	B 4,4'-DDE	6.032	5.156	80509376	114.3E6	51.145	49.252
13)	MA Dieldrin	6.174	5.283	86771428	127.4E6	50.691	48.709
14)	MA Endrin	6.403	5.557	76198530	109.0E6	49.686	48.423
15)	B Endosulfa...	6.625	5.851	76592116	102.7E6	49.776	47.279
16)	A 4,4'-DDD	6.553	5.709	70329592	92735219	53.439	50.253
17)	MA 4,4'-DDT	6.870	5.961	72474682	96404515	48.479	47.345
18)	B Endrin al...	6.757	6.031	59530434	81840899	48.988	46.611
19)	B Endosulfa...	6.993	6.254	80194397	105.9E6	49.037	47.658
20)	A Methoxychlor	7.361	6.540	42555699	54590363	47.855	47.632
21)	B Endrin ke...	7.478	6.758	88343612	117.3E6	49.638	48.151
22)	Mirex	7.954	6.943	74046029	97039895	47.754	47.013
24)	Chlordane-2	5.082f	4.272	101.8E6	4711237	1409.252	54.142 #
25)	Chlordane-3	5.769	4.899	92776147	133.0E6	370.867	508.321 #
26)	Chlordane-4	5.849	4.963	91834576	133.1E6	297.277	505.546 #
27)	Chlordane-5	6.693	0.000	974417	0	15.234	N.D. #

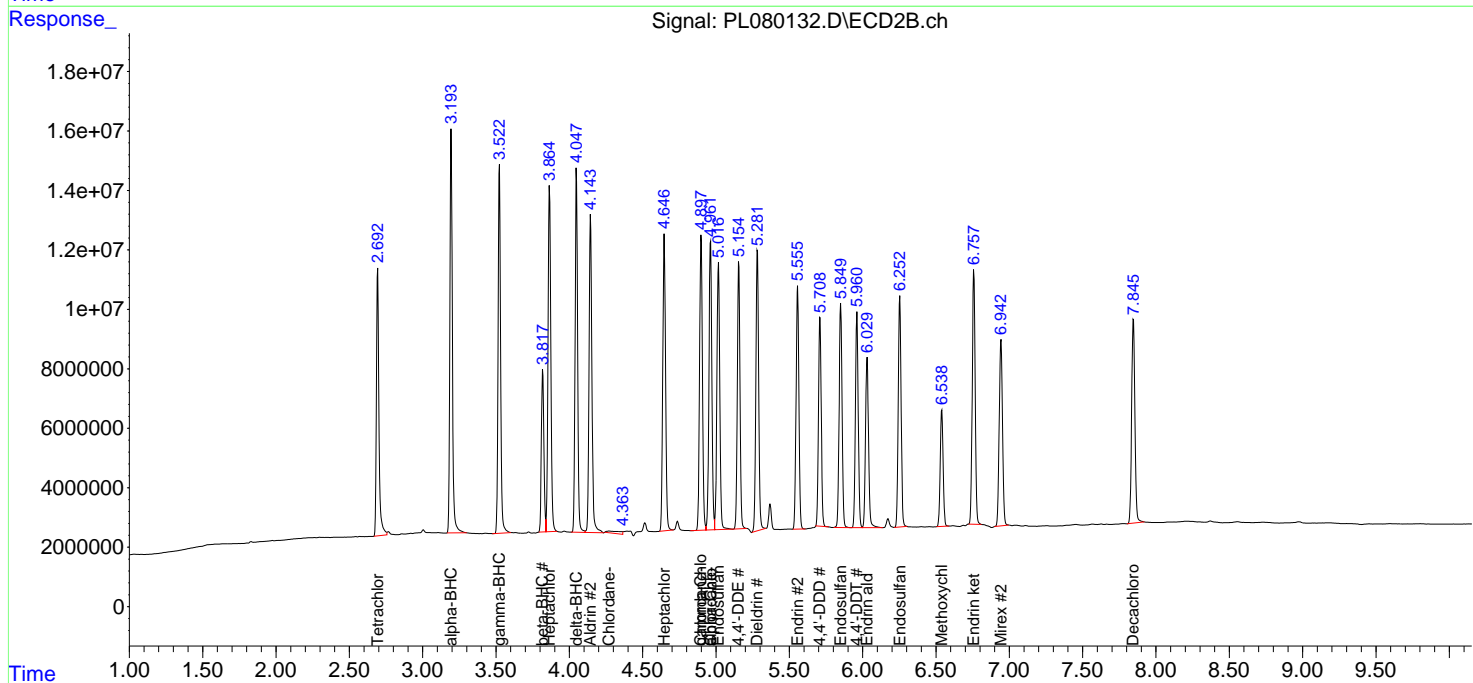
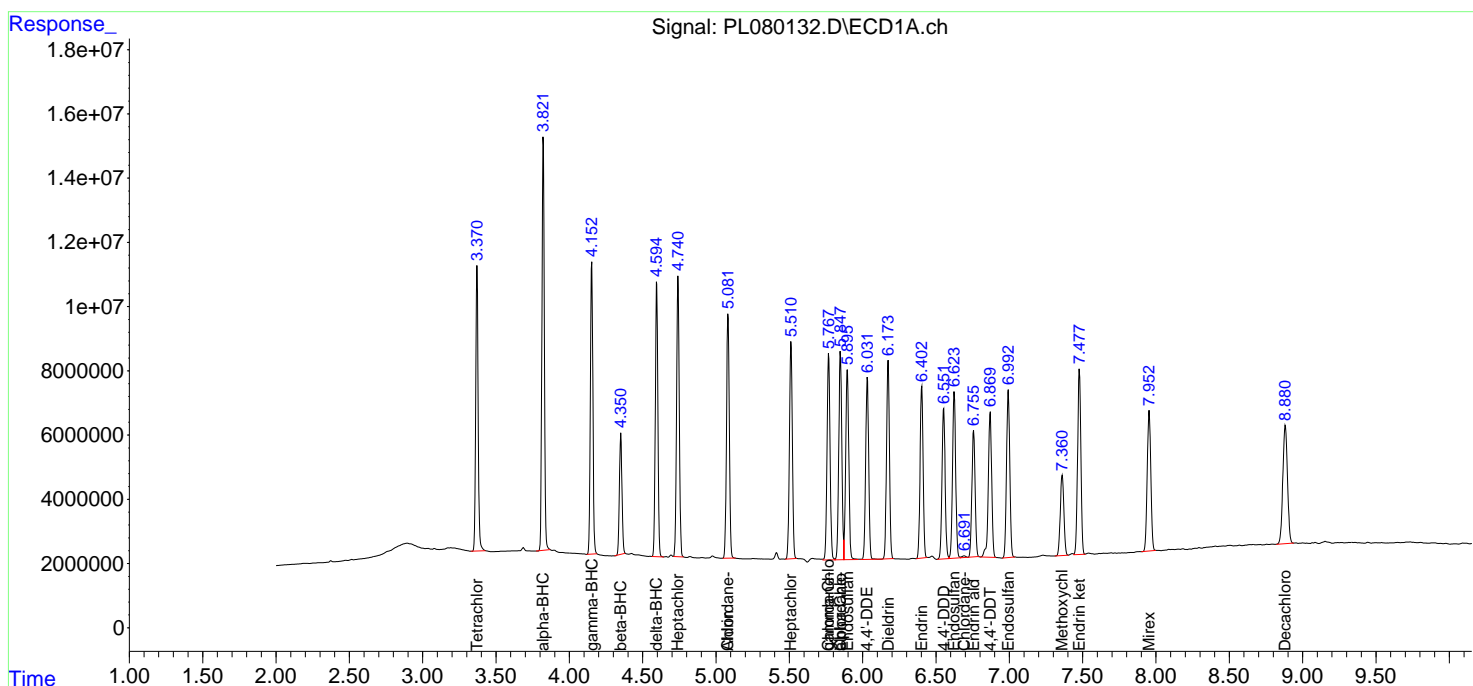
(f)=RT Delta > 1/2 Window (#)=Amounts differ by > 25% (m)=manual int.

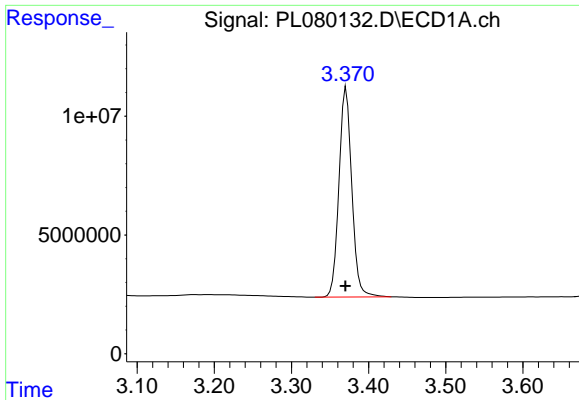
Data Path : Z:\pestpcbsrv\HPCHEM1\ECD_L\Data\PL010523\
 Data File : PL080132.D
 Signal(s) : Signal #1: ECD1A.ch Signal #2: ECD2B.ch
 Acq On : 05 Jan 2023 19:29
 Operator : AR\AJ
 Sample : PSTDCCC050
 Misc :
 ALS Vial : 4 Sample Multiplier: 1

Instrument :
 ECD_L
 ClientSampleId :

Integration File signal 1: autoint1.e
 Integration File signal 2: autoint2.e
 Quant Time: Jan 05 20:37:35 2023
 Quant Method : Z:\pestpcbsrv\HPCHEM1\ECD_L\methods\PL010423.M
 Quant Title : GC Extractables
 QLast Update : Thu Jan 05 05:11:24 2023
 Response via : Initial Calibration
 Integrator: ChemStation

Volume Inj. : 1 µl
 Signal #1 Phase : ZB-MR2 Signal #2 Phase: ZB-MR1
 Signal #1 Info : 30M x 0.32mm x0.2 Signal #2 Info : 30M x 0.32mm x0.5µm

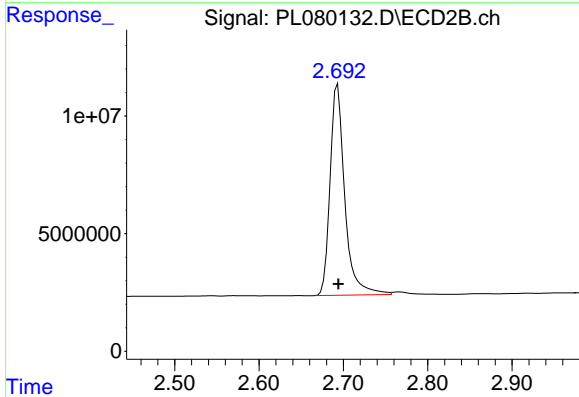




#1 Tetrachloro-m-xylene

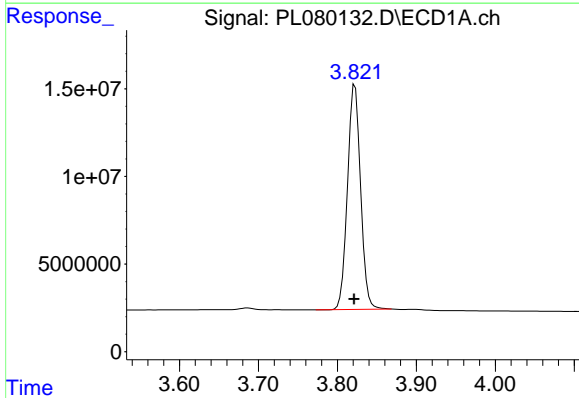
R.T.: 3.371 min
 Delta R.T.: 0.001 min
 Response: 101843503
 Conc: 51.20 ng/ml

Instrument :
 ECD_L
 ClientSampleId :



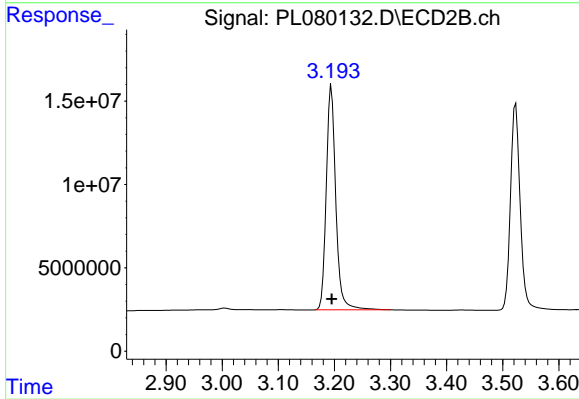
#1 Tetrachloro-m-xylene

R.T.: 2.693 min
 Delta R.T.: 0.000 min
 Response: 108650281
 Conc: 47.78 ng/ml



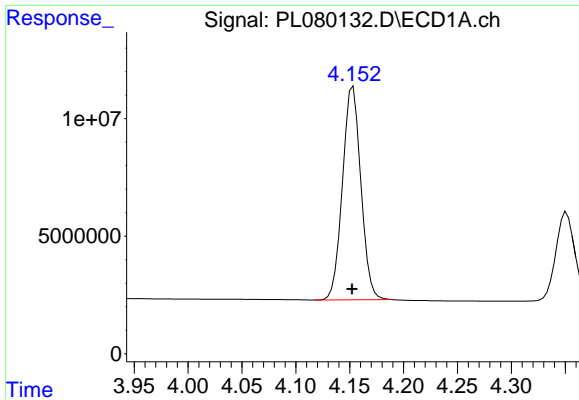
#2 alpha-BHC

R.T.: 3.822 min
 Delta R.T.: 0.001 min
 Response: 148345701
 Conc: 51.92 ng/ml



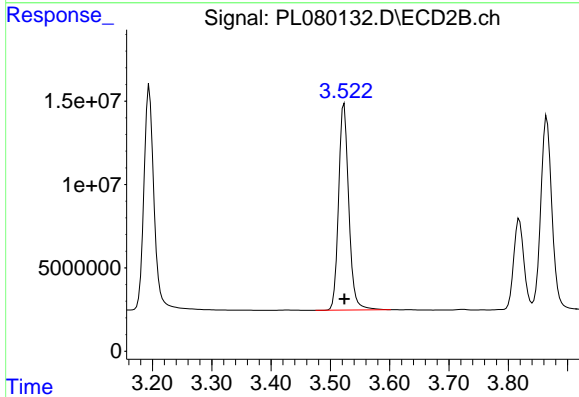
#2 alpha-BHC

R.T.: 3.195 min
 Delta R.T.: 0.000 min
 Response: 158797873
 Conc: 47.41 ng/ml

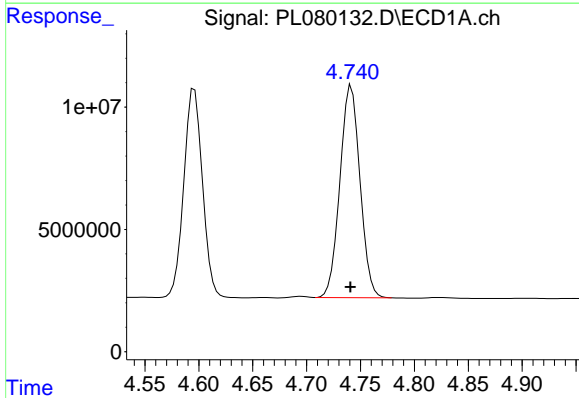


#3 gamma-BHC (Lindane)
 R.T.: 4.153 min
 Delta R.T.: 0.000 min
 Response: 107865441
 Conc: 54.88 ng/ml

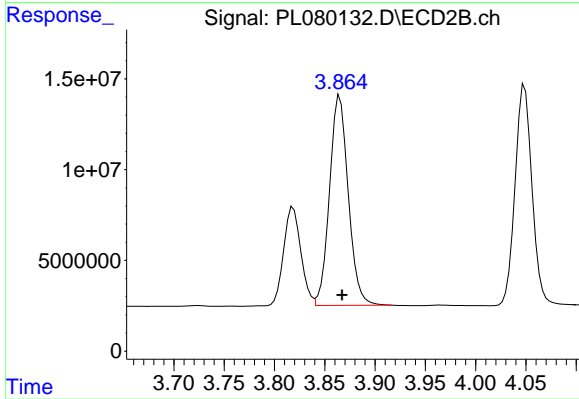
Instrument :
 ECD_L
 ClientSampleId :



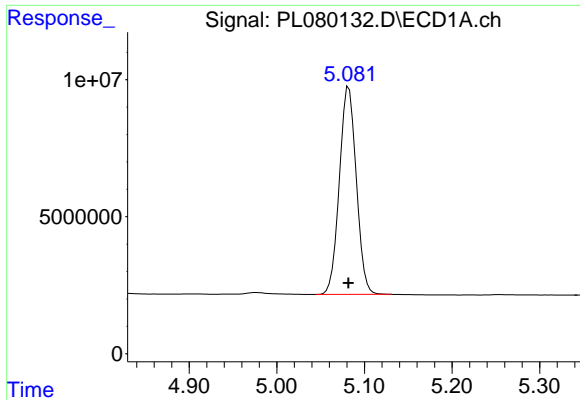
#3 gamma-BHC (Lindane)
 R.T.: 3.523 min
 Delta R.T.: 0.000 min
 Response: 147844887
 Conc: 48.21 ng/ml



#4 Heptachlor
 R.T.: 4.742 min
 Delta R.T.: 0.000 min
 Response: 112588836
 Conc: 50.63 ng/ml

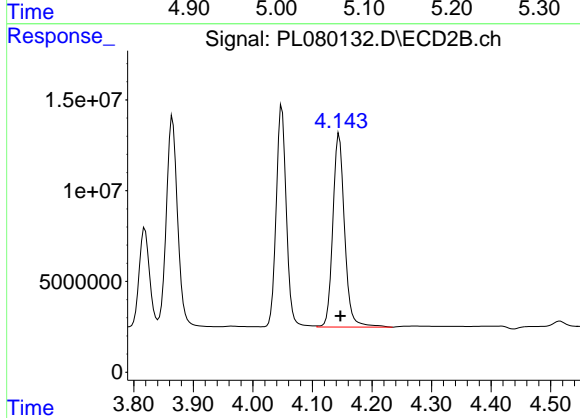


#4 Heptachlor
 R.T.: 3.865 min
 Delta R.T.: -0.002 min
 Response: 149818867
 Conc: 48.26 ng/ml

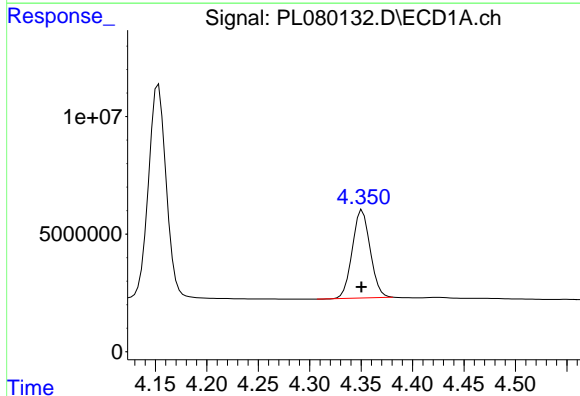


#5 Aldrin
 R.T.: 5.082 min
 Delta R.T.: 0.000 min
 Response: 101813663
 Conc: 51.31 ng/ml

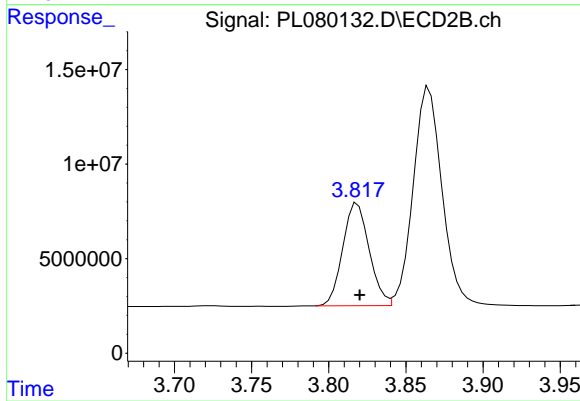
Instrument :
 ECD_L
 ClientSampleId :



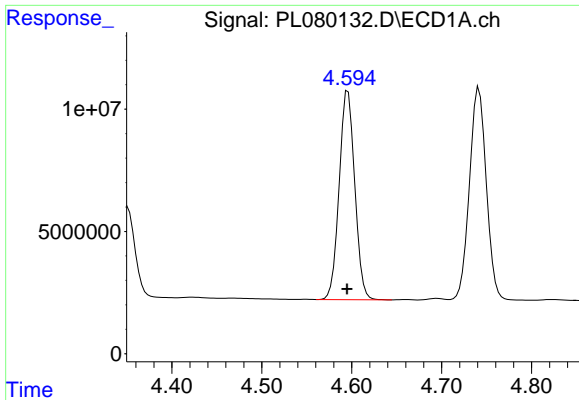
#5 Aldrin
 R.T.: 4.145 min
 Delta R.T.: -0.002 min
 Response: 145798357
 Conc: 49.41 ng/ml



#6 beta-BHC
 R.T.: 4.351 min
 Delta R.T.: 0.000 min
 Response: 45414284
 Conc: 49.61 ng/ml

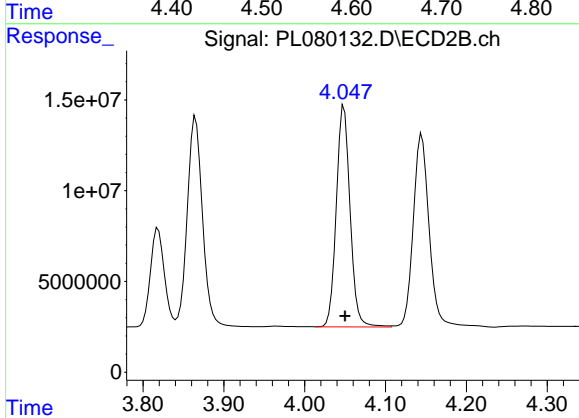


#6 beta-BHC
 R.T.: 3.819 min
 Delta R.T.: -0.001 min
 Response: 64655673
 Conc: 48.19 ng/ml

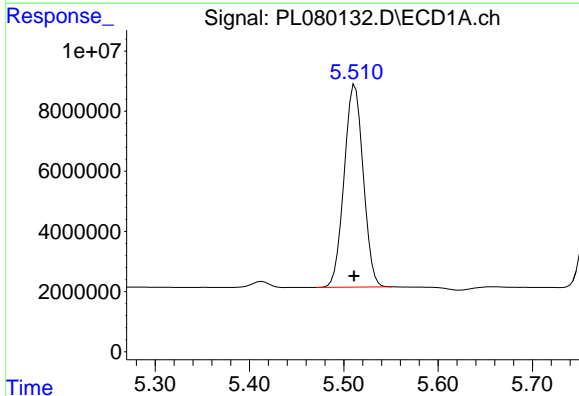


#7 delta-BHC
 R.T.: 4.596 min
 Delta R.T.: 0.001 min
 Response: 102864107
 Conc: 51.21 ng/ml

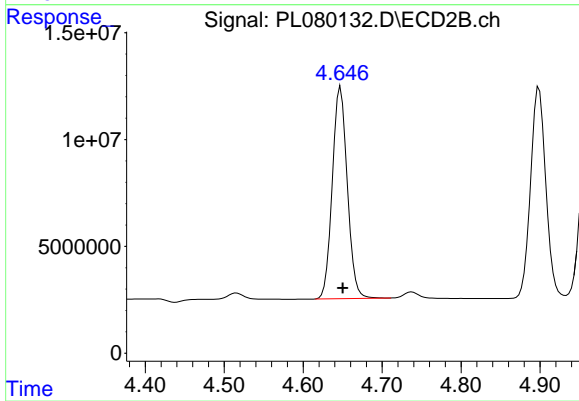
Instrument :
 ECD_L
 ClientSampleId :



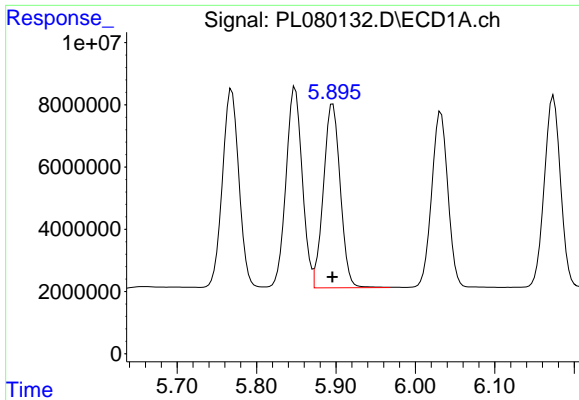
#7 delta-BHC
 R.T.: 4.049 min
 Delta R.T.: -0.001 min
 Response: 143888193
 Conc: 48.94 ng/ml



#8 Heptachlor epoxide
 R.T.: 5.512 min
 Delta R.T.: 0.001 min
 Response: 94919633
 Conc: 52.17 ng/ml



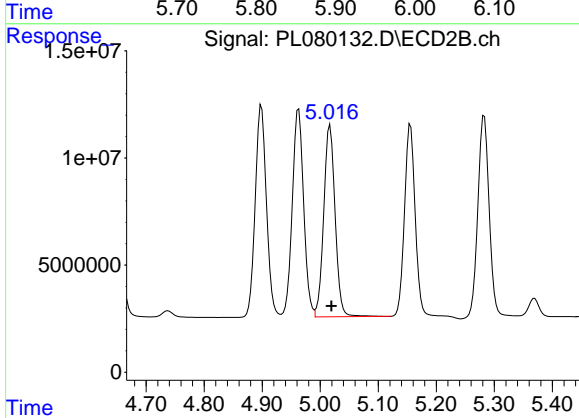
#8 Heptachlor epoxide
 R.T.: 4.647 min
 Delta R.T.: -0.002 min
 Response: 130843905
 Conc: 47.76 ng/ml



#9 Endosulfan I

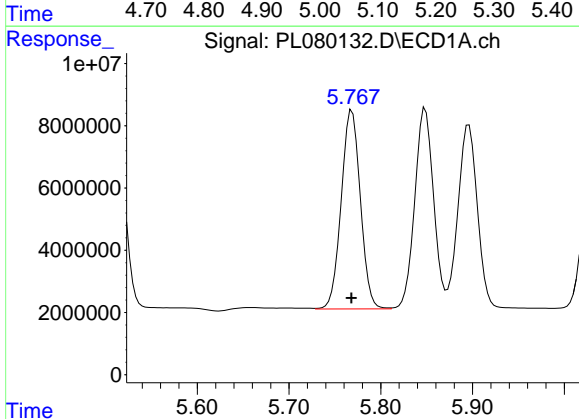
R.T.: 5.896 min
 Delta R.T.: 0.000 min
 Response: 87133193
 Conc: 50.78 ng/ml

Instrument :
 ECD_L
 ClientSampleId :



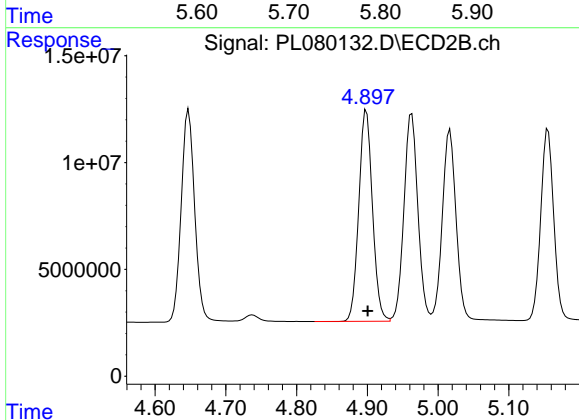
#9 Endosulfan I

R.T.: 5.017 min
 Delta R.T.: -0.002 min
 Response: 121452494
 Conc: 46.89 ng/ml



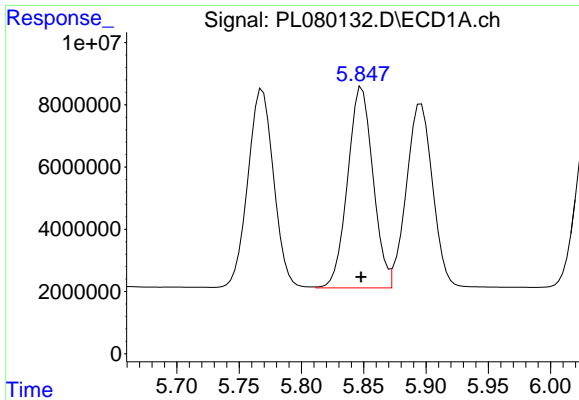
#10 gamma-Chlordane

R.T.: 5.769 min
 Delta R.T.: 0.000 min
 Response: 92776147
 Conc: 51.42 ng/ml



#10 gamma-Chlordane

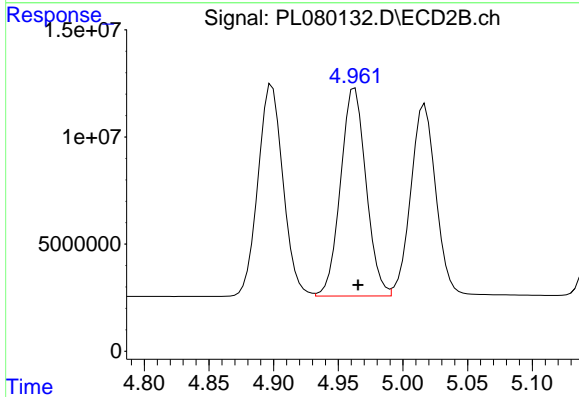
R.T.: 4.899 min
 Delta R.T.: -0.002 min
 Response: 132977199
 Conc: 47.64 ng/ml



#11 alpha-Chlordane

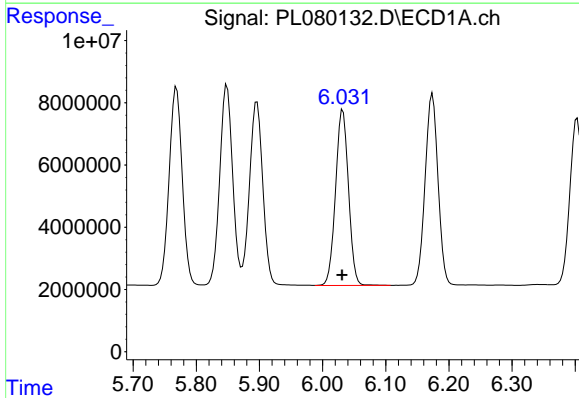
R.T.: 5.849 min
 Delta R.T.: 0.000 min
 Response: 91834576
 Conc: 51.07 ng/ml

Instrument :
 ECD_L
 ClientSampleId :



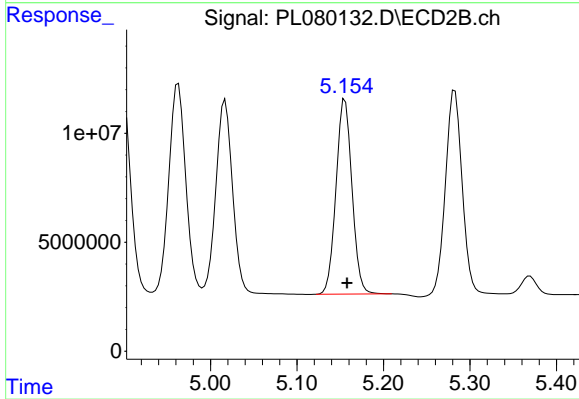
#11 alpha-Chlordane

R.T.: 4.963 min
 Delta R.T.: -0.002 min
 Response: 133050977
 Conc: 47.62 ng/ml



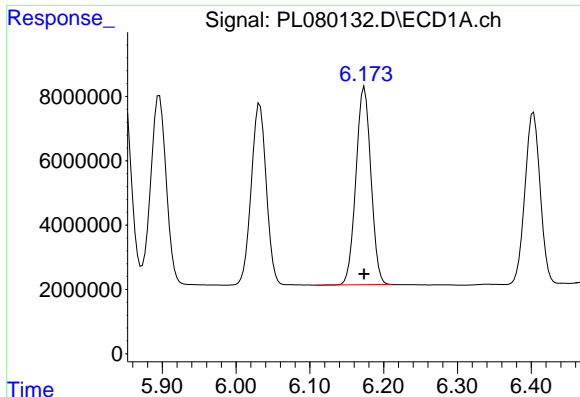
#12 4,4'-DDE

R.T.: 6.032 min
 Delta R.T.: 0.001 min
 Response: 80509376
 Conc: 51.14 ng/ml



#12 4,4'-DDE

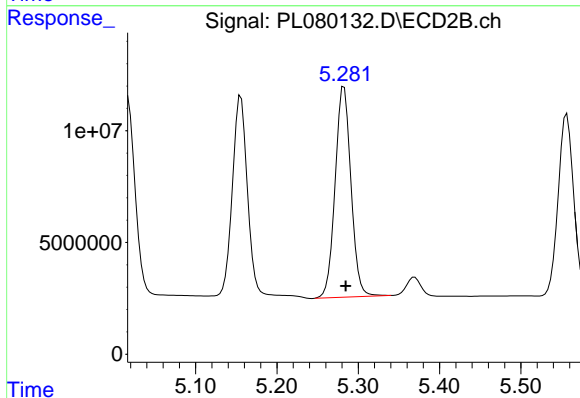
R.T.: 5.156 min
 Delta R.T.: -0.002 min
 Response: 114278526
 Conc: 49.25 ng/ml



#13 Dieldrin

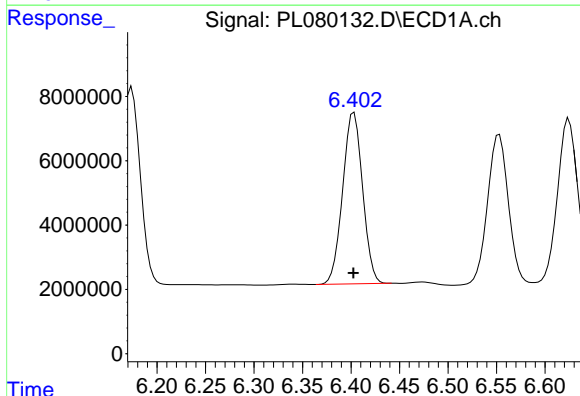
R.T.: 6.174 min
 Delta R.T.: 0.000 min
 Response: 86771428
 Conc: 50.69 ng/ml

Instrument :
 ECD_L
 ClientSampleId :



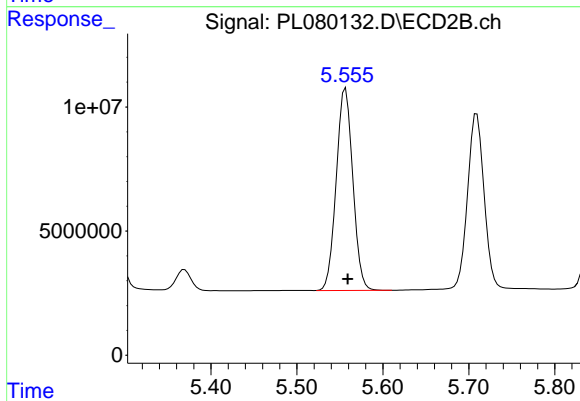
#13 Dieldrin

R.T.: 5.283 min
 Delta R.T.: -0.002 min
 Response: 127401522
 Conc: 48.71 ng/ml



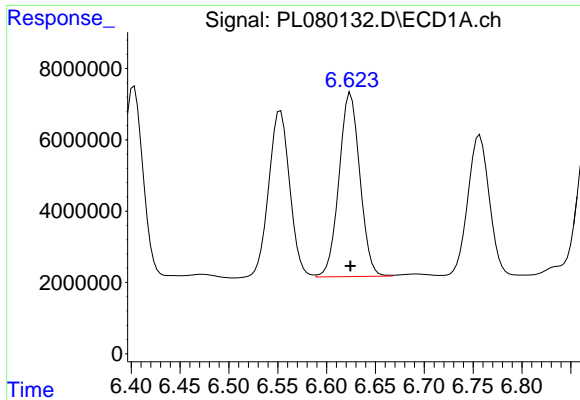
#14 Endrin

R.T.: 6.403 min
 Delta R.T.: 0.000 min
 Response: 76198530
 Conc: 49.69 ng/ml



#14 Endrin

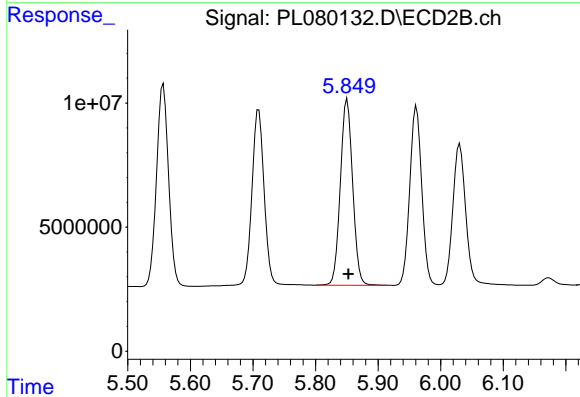
R.T.: 5.557 min
 Delta R.T.: -0.002 min
 Response: 108975808
 Conc: 48.42 ng/ml



#15 Endosulfan II

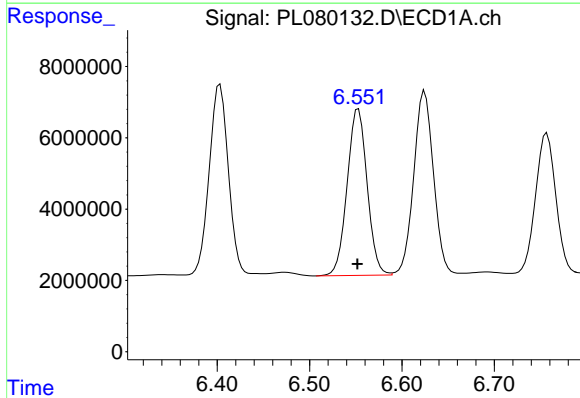
R.T.: 6.625 min
Delta R.T.: 0.000 min
Response: 76592116
Conc: 49.78 ng/ml

Instrument :
ECD_L
ClientSampleId :



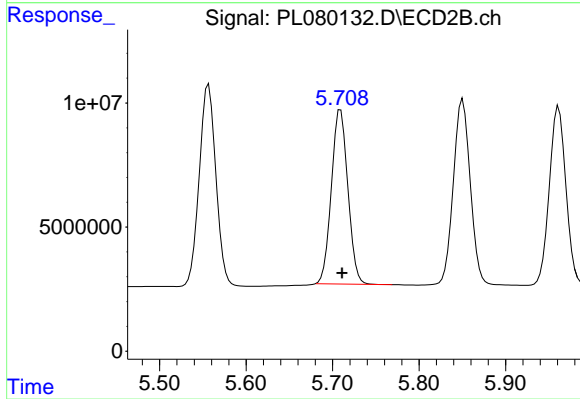
#15 Endosulfan II

R.T.: 5.851 min
Delta R.T.: -0.002 min
Response: 102650024
Conc: 47.28 ng/ml



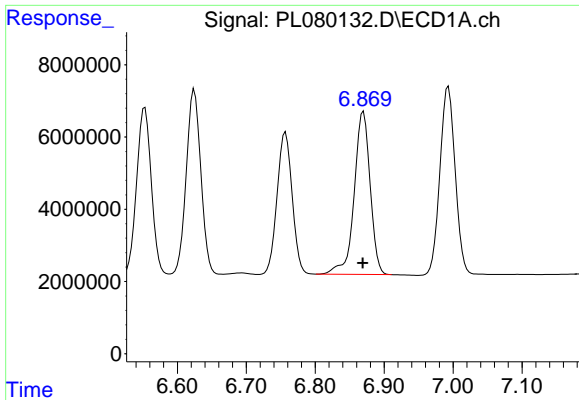
#16 4,4'-DDD

R.T.: 6.553 min
Delta R.T.: 0.000 min
Response: 70329592
Conc: 53.44 ng/ml



#16 4,4'-DDD

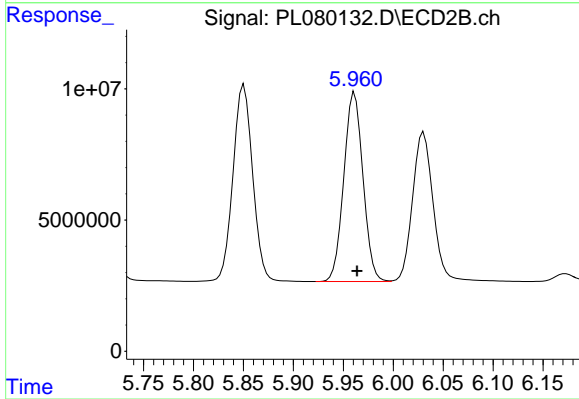
R.T.: 5.709 min
Delta R.T.: -0.002 min
Response: 92735219
Conc: 50.25 ng/ml



#17 4,4'-DDT

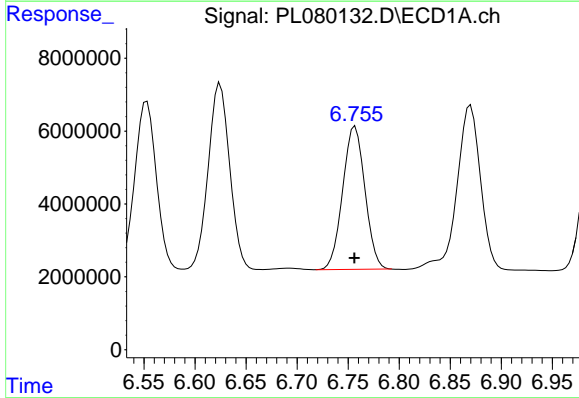
R.T.: 6.870 min
 Delta R.T.: 0.001 min
 Response: 72474682
 Conc: 48.48 ng/ml

Instrument :
 ECD_L
 ClientSampleId :



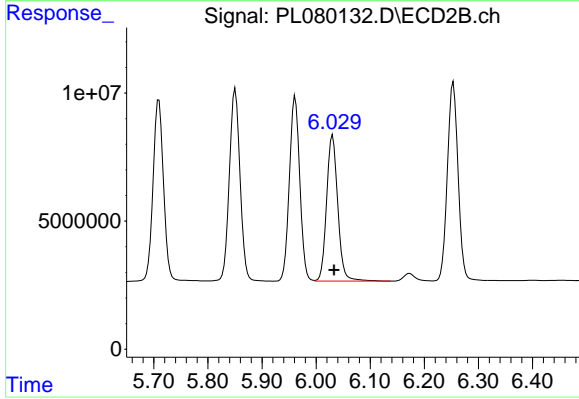
#17 4,4'-DDT

R.T.: 5.961 min
 Delta R.T.: -0.003 min
 Response: 96404515
 Conc: 47.35 ng/ml



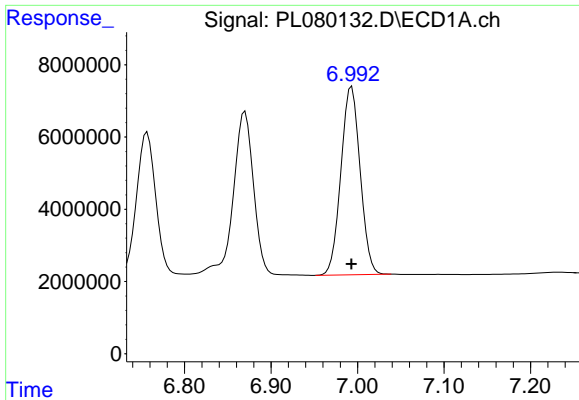
#18 Endrin aldehyde

R.T.: 6.757 min
 Delta R.T.: 0.000 min
 Response: 59530434
 Conc: 48.99 ng/ml



#18 Endrin aldehyde

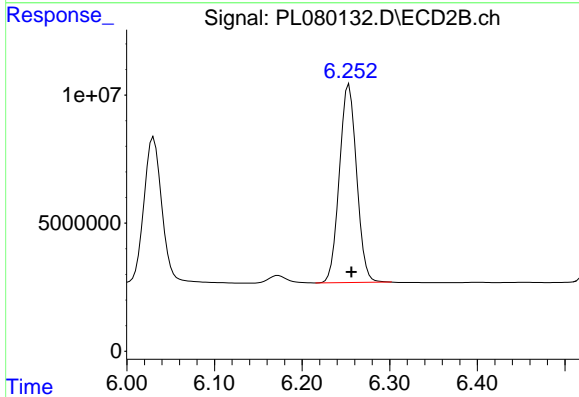
R.T.: 6.031 min
 Delta R.T.: -0.002 min
 Response: 81840899
 Conc: 46.61 ng/ml



#19 Endosulfan Sulfate

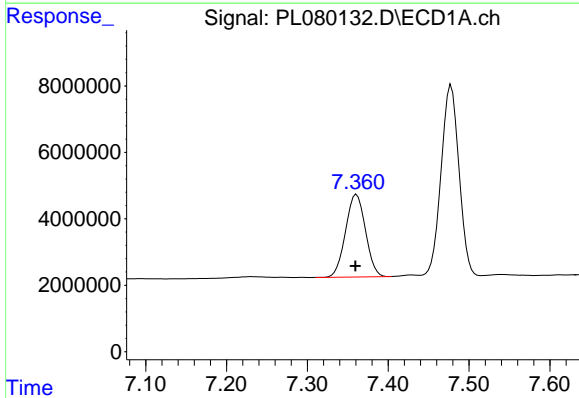
R.T.: 6.993 min
 Delta R.T.: 0.000 min
 Response: 80194397
 Conc: 49.04 ng/ml

Instrument :
 ECD_L
 ClientSampleId :



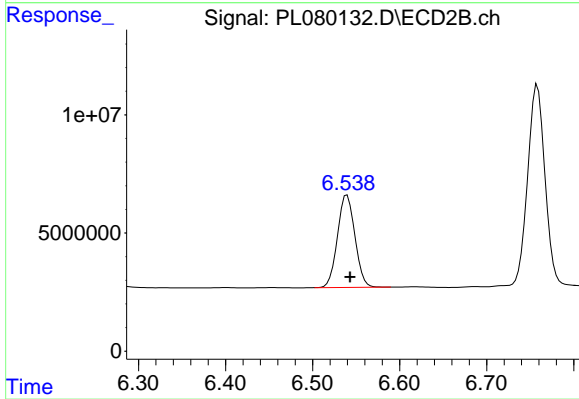
#19 Endosulfan Sulfate

R.T.: 6.254 min
 Delta R.T.: -0.003 min
 Response: 105883839
 Conc: 47.66 ng/ml



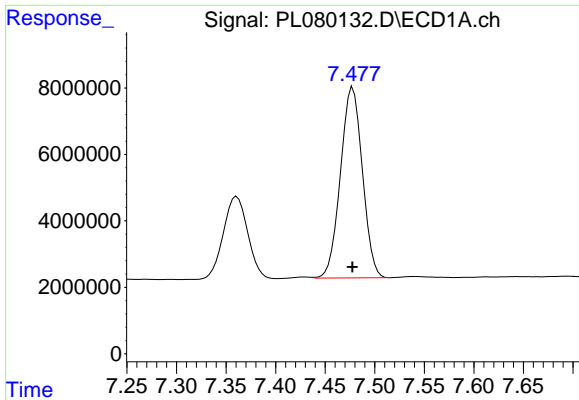
#20 Methoxychlor

R.T.: 7.361 min
 Delta R.T.: 0.001 min
 Response: 42555699
 Conc: 47.86 ng/ml



#20 Methoxychlor

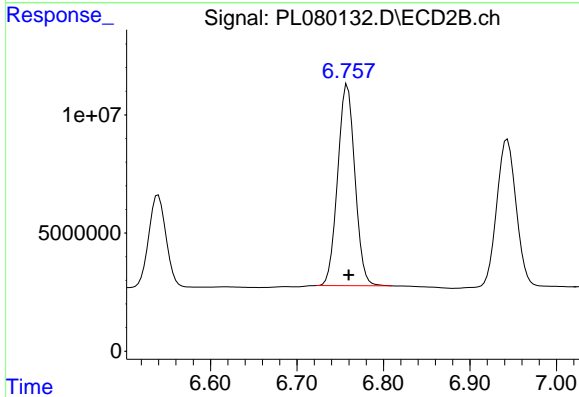
R.T.: 6.540 min
 Delta R.T.: -0.003 min
 Response: 54590363
 Conc: 47.63 ng/ml



#21 Endrin ketone

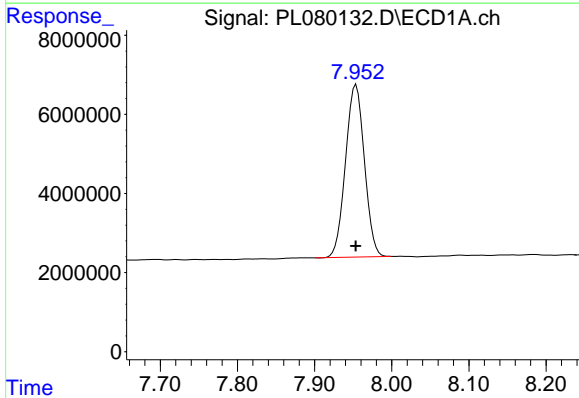
R.T.: 7.478 min
 Delta R.T.: 0.000 min
 Response: 88343612
 Conc: 49.64 ng/ml

Instrument :
 ECD_L
 ClientSampleId :



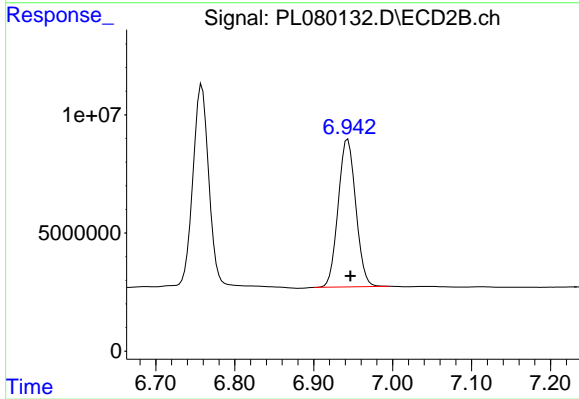
#21 Endrin ketone

R.T.: 6.758 min
 Delta R.T.: -0.002 min
 Response: 117346327
 Conc: 48.15 ng/ml



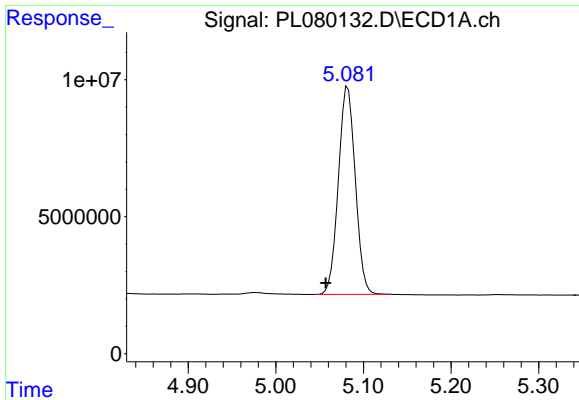
#22 Mirex

R.T.: 7.954 min
 Delta R.T.: 0.000 min
 Response: 74046029
 Conc: 47.75 ng/ml



#22 Mirex

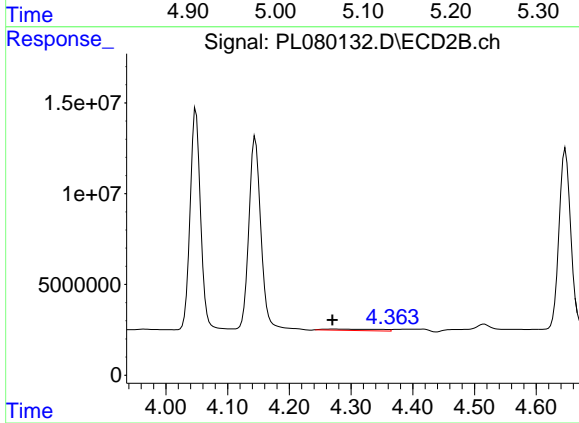
R.T.: 6.943 min
 Delta R.T.: -0.003 min
 Response: 97039895
 Conc: 47.01 ng/ml



#24 Chlordane-2

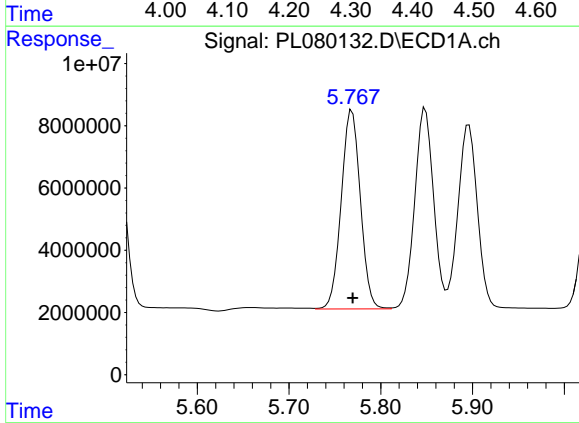
R.T.: 5.082 min
 Delta R.T.: 0.025 min
 Response: 101813663
 Conc: 1409.25 ng/ml

Instrument :
 ECD_L
 ClientSampleId :



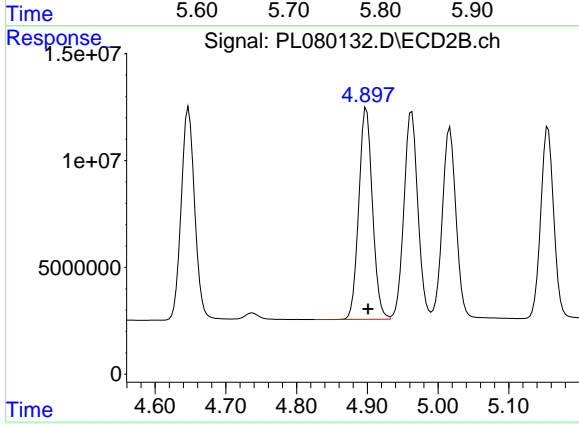
#24 Chlordane-2

R.T.: 4.272 min
 Delta R.T.: 0.002 min
 Response: 4711237
 Conc: 54.14 ng/ml



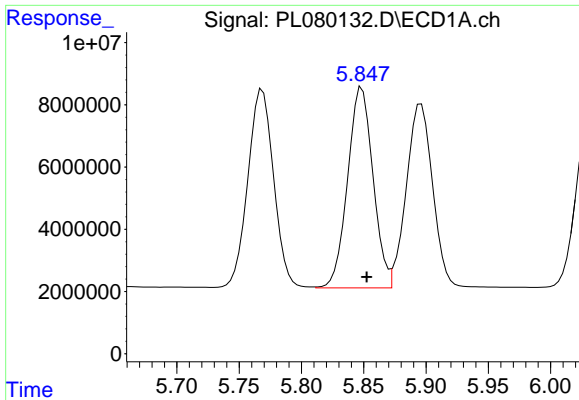
#25 Chlordane-3

R.T.: 5.769 min
 Delta R.T.: 0.000 min
 Response: 92776147
 Conc: 370.87 ng/ml



#25 Chlordane-3

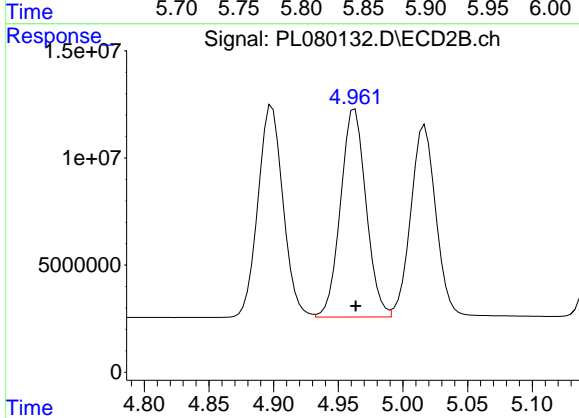
R.T.: 4.899 min
 Delta R.T.: -0.003 min
 Response: 132977199
 Conc: 508.32 ng/ml



#26 Chlordane-4

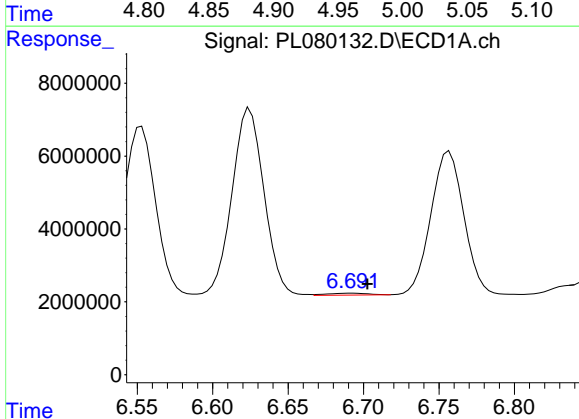
R.T.: 5.849 min
 Delta R.T.: -0.004 min
 Response: 91834576
 Conc: 297.28 ng/ml

Instrument :
 ECD_L
 ClientSampleId :



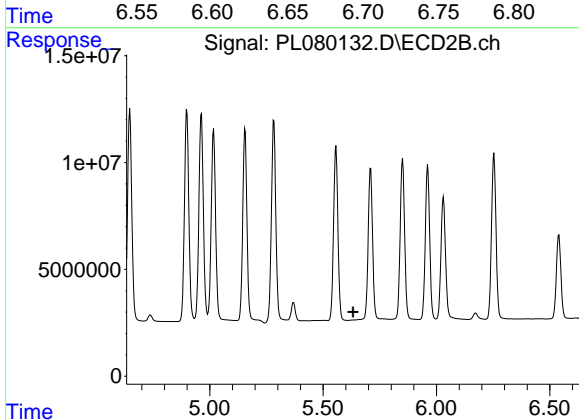
#26 Chlordane-4

R.T.: 4.963 min
 Delta R.T.: 0.000 min
 Response: 133050977
 Conc: 505.55 ng/ml



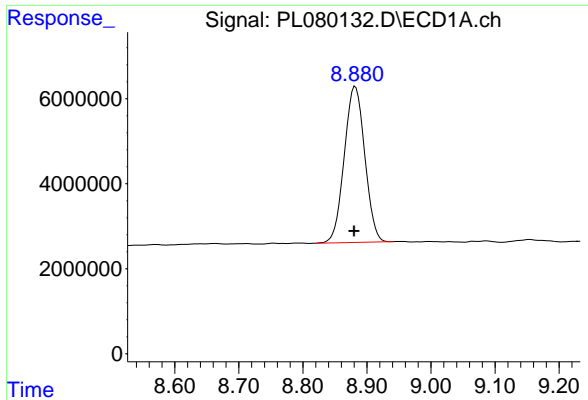
#27 Chlordane-5

R.T.: 6.693 min
 Delta R.T.: -0.010 min
 Response: 974417
 Conc: 15.23 ng/ml



#27 Chlordane-5

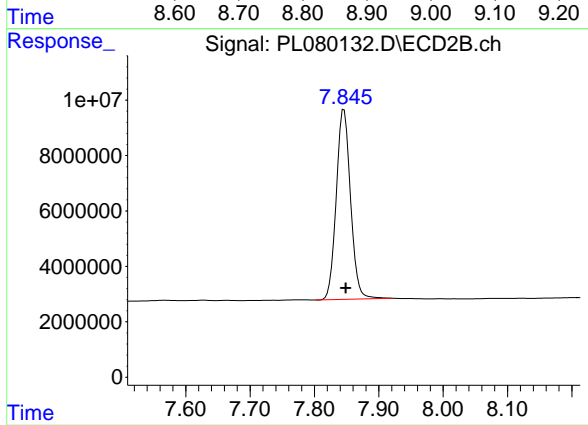
R.T.: 0.000 min
 Exp R.T.: 5.632 min
 Response: 0
 Conc: N.D.



#28 Decachlorobiphenyl

R.T.: 8.882 min
Delta R.T.: 0.002 min
Response: 81647526
Conc: 47.59 ng/ml

Instrument :
ECD_L
ClientSampleId :



#28 Decachlorobiphenyl

R.T.: 7.846 min
Delta R.T.: -0.003 min
Response: 105992044
Conc: 46.91 ng/ml