

Data Path : Z:\pestpcbsrv\HPCHEM1\ECD_L\Data\PL010523\
 Data File : PL080109.D
 Signal(s) : Signal #1: ECD1A.ch Signal #2: ECD2B.ch
 Acq On : 05 Jan 2023 11:21
 Operator : AR\AJ
 Sample : PB149852BSD
 Misc :
 ALS Vial : 7 Sample Multiplier: 1

Instrument :
 ECD_L
ClientSampleId :
 PB149852BSD

Manual Integrations
APPROVED

Reviewed By :Abdul Mirza 01/06/2023
 Supervised By :Ankita Jodhani 01/06/2023

Integration File signal 1: autoint1.e
 Integration File signal 2: autoint2.e
 Quant Time: Jan 05 20:23:45 2023
 Quant Method : Z:\pestpcbsrv\HPCHEM1\ECD_L\methods\PL010423.M
 Quant Title : GC Extractables
 QLast Update : Thu Jan 05 05:11:24 2023
 Response via : Initial Calibration
 Integrator: ChemStation

Volume Inj. : 1 µl
 Signal #1 Phase : ZB-MR2 Signal #2 Phase: ZB-MR1
 Signal #1 Info : 30M x 0.32mm x0.2 Signal #2 Info : 30M x 0.32mm x0.5µm

Compound	RT#1	RT#2	Resp#1	Resp#2	ng/ml	ng/ml

System Monitoring Compounds						
1) SA Tetrachlo...	3.374	2.694	46186124	47954838	23.219	21.090
28) SA Decachlor...	8.890	7.849	42242003	52152551	24.620	23.084
Target Compounds						
2) A alpha-BHC	3.825	3.196	37816175	38439886	13.236	11.477
3) MA gamma-BHC...	4.156	3.524	27424923	37345330	13.954	12.178
4) MA Heptachlor	4.745	3.867	32058395	39078582	14.417	12.588
5) MB Aldrin	5.086	4.147	27366916	37114562	13.792	12.577
6) B beta-BHC	4.355	3.820	14161665	17468453	15.471	13.020
7) B delta-BHC	4.599	4.050	27935017	35709381	13.908	12.146
8) B Heptachlo...	5.516	4.649	26600064	35727040	14.619	13.041
9) A Endosulfan I	5.901	5.019	25315060	33515407	14.753	12.940
10) B gamma-Chl...	5.774	4.901	26666273	35836068	14.781	12.840
11) B alpha-Chl...	5.854	4.965	26421170	36362783	14.692	13.015
12) B 4,4'-DDE	6.037	5.158	21279749	28815692	13.518	12.419
13) MA Dieldrin	6.179	5.285	22954695	33478429	13.410	12.800
14) MA Endrin	6.408	5.559	20787298	28647283	13.554	12.729
15) B Endosulfa...	6.630	5.853	21595762	28853904	14.035	13.290
16) A 4,4'-DDD	6.559	5.712	18465879	23914292	14.031	12.959
17) MA 4,4'-DDT	6.876	5.964	20706595	26118688	13.851	12.827
18) B Endrin al...	6.763	6.033	17075353	23757065	14.051	13.530
19) B Endosulfa...	6.999	6.256	23691883	29984860	14.487	13.496
20) A Methoxychlor	7.368	6.543	13071625	16100953	14.699	14.049
21) B Endrin ke...	7.484	6.761	25465129	31405222	14.308	12.887
22) Mirex	7.960	6.945	23753621	28926172	15.319	14.014m

(f)=RT Delta > 1/2 Window (#)=Amounts differ by > 25% (m)=manual int.

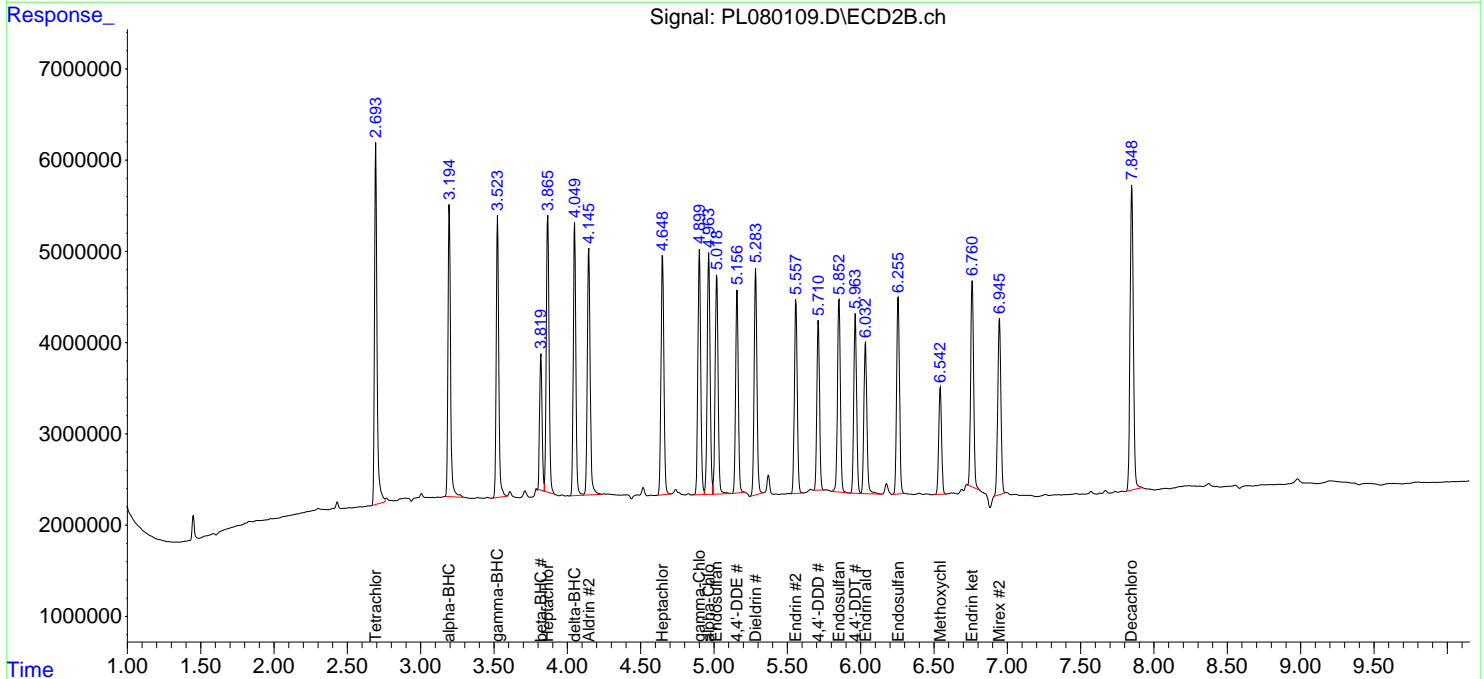
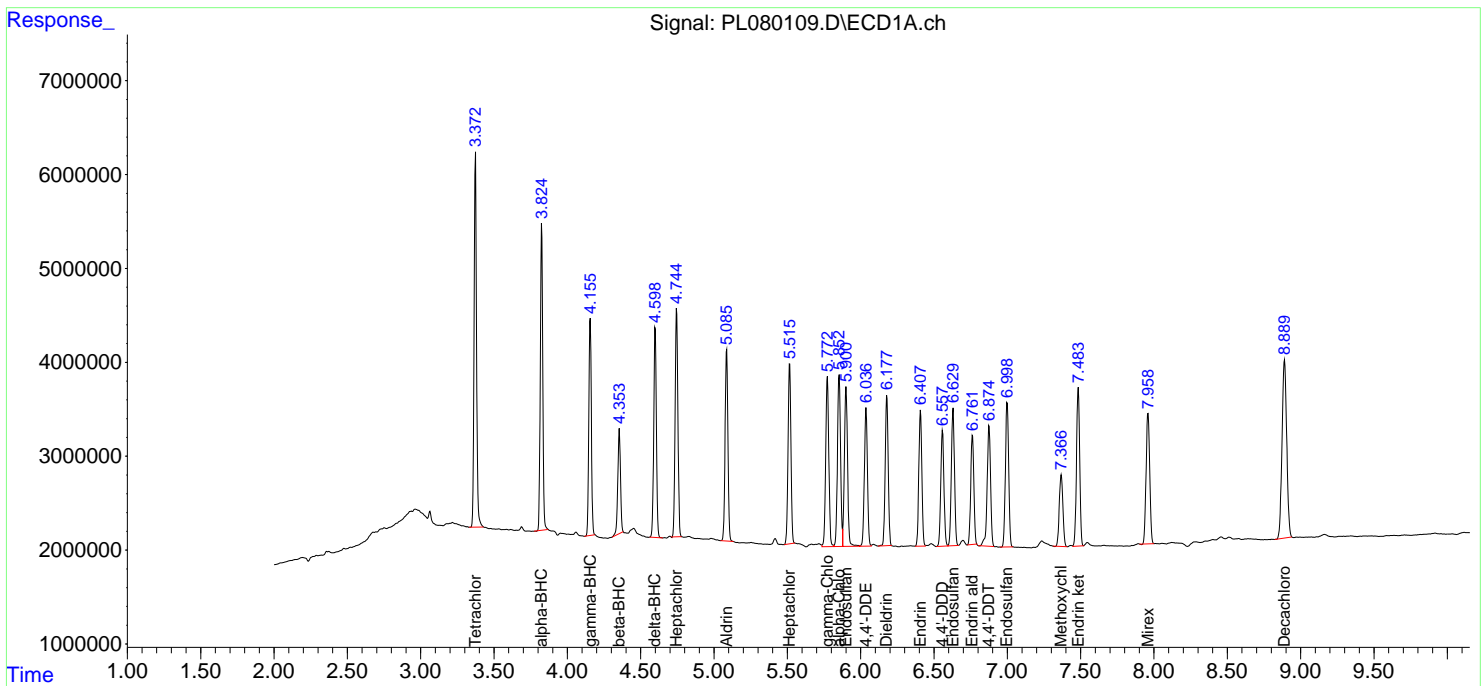
Data Path : Z:\pestpcbsrv\HPCHEM1\ECD_L\Data\PL010523\
 Data File : PL080109.D
 Signal(s) : Signal #1: ECD1A.ch Signal #2: ECD2B.ch
 Acq On : 05 Jan 2023 11:21
 Operator : AR\AJ
 Sample : PB149852BSD
 Misc :
 ALS Vial : 7 Sample Multiplier: 1

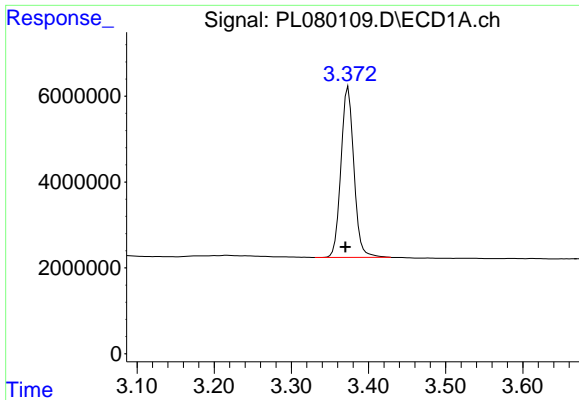
Instrument :
 ECD_L
ClientSampleId :
 PB149852BSD

Manual Integrations
APPROVED
 Reviewed By :Abdul Mirza 01/06/2023
 Supervised By :Ankita Jodhani 01/06/2023

Integration File signal 1: autoint1.e
 Integration File signal 2: autoint2.e
 Quant Time: Jan 05 20:23:45 2023
 Quant Method : Z:\pestpcbsrv\HPCHEM1\ECD_L\methods\PL010423.M
 Quant Title : GC Extractables
 QLast Update : Thu Jan 05 05:11:24 2023
 Response via : Initial Calibration
 Integrator: ChemStation

Volume Inj. : 1 µl
 Signal #1 Phase : ZB-MR2 Signal #2 Phase: ZB-MR1
 Signal #1 Info : 30M x 0.32mm x0.2 Signal #2 Info : 30M x 0.32mm x0.5µm

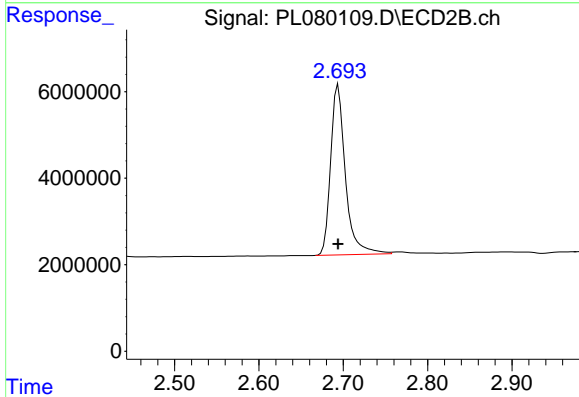




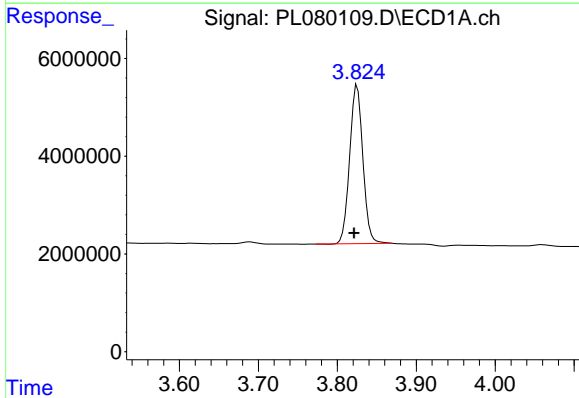
#1 Tetrachloro-m-xylene
 R.T.: 3.374 min
 Delta R.T.: 0.004 min
 Response: 46186124
 Conc: 23.22 ng/ml

Instrument : ECD_L
 Client Sample Id : PB149852BSD

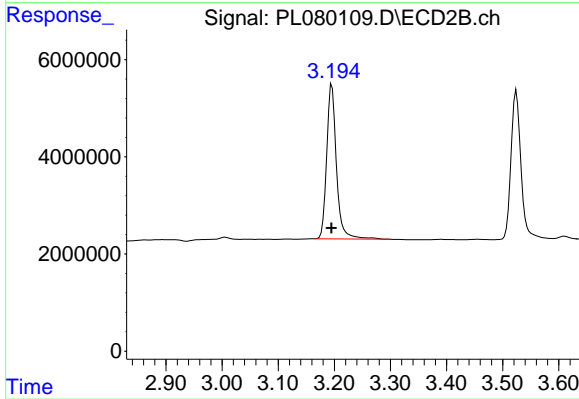
Manual Integrations
APPROVED
 Reviewed By :Abdul Mirza 01/06/2023
 Supervised By :Ankita Jodhani 01/06/2023



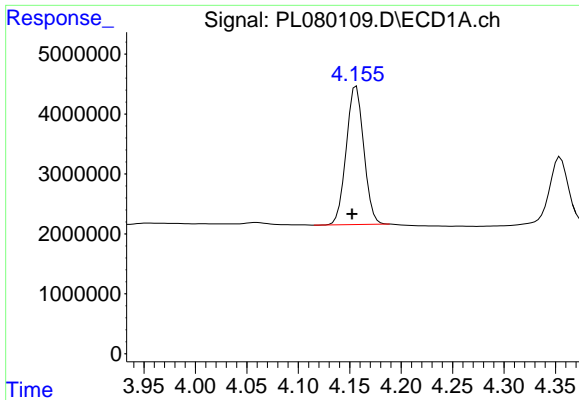
#1 Tetrachloro-m-xylene
 R.T.: 2.694 min
 Delta R.T.: 0.000 min
 Response: 47954838
 Conc: 21.09 ng/ml



#2 alpha-BHC
 R.T.: 3.825 min
 Delta R.T.: 0.004 min
 Response: 37816175
 Conc: 13.24 ng/ml



#2 alpha-BHC
 R.T.: 3.196 min
 Delta R.T.: 0.000 min
 Response: 38439886
 Conc: 11.48 ng/ml

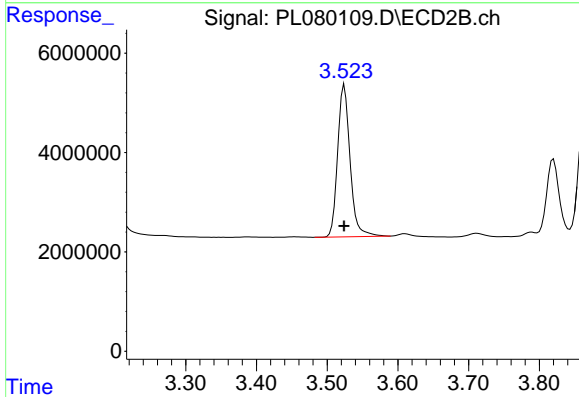


#3 gamma-BHC (Lindane)
 R.T.: 4.156 min
 Delta R.T.: 0.004 min
 Response: 27424923
 Conc: 13.95 ng/ml

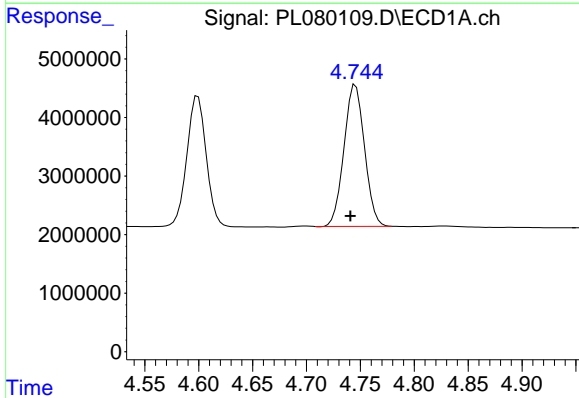
Instrument :
 ECD_L
 ClientSampleId :
 PB149852BSD

Manual Integrations
APPROVED

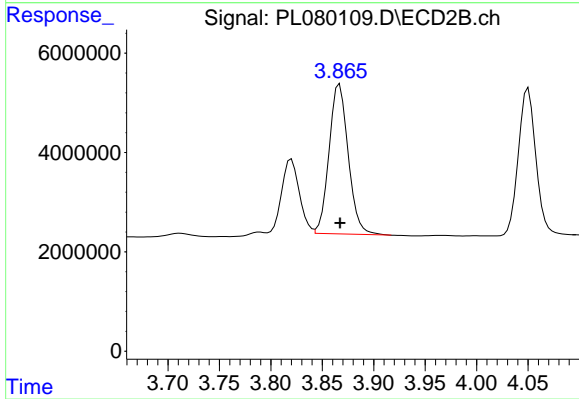
Reviewed By :Abdul Mirza 01/06/2023
 Supervised By :Ankita Jodhani 01/06/2023



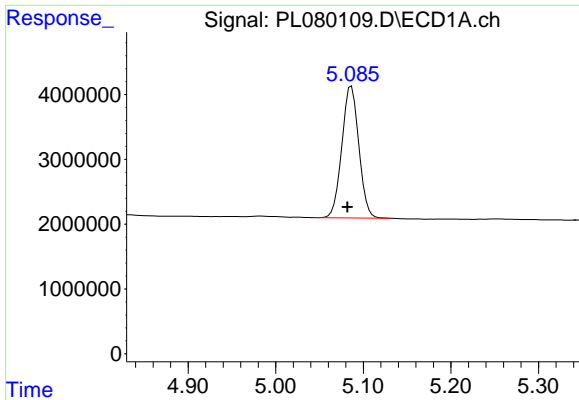
#3 gamma-BHC (Lindane)
 R.T.: 3.524 min
 Delta R.T.: 0.000 min
 Response: 37345330
 Conc: 12.18 ng/ml



#4 Heptachlor
 R.T.: 4.745 min
 Delta R.T.: 0.005 min
 Response: 32058395
 Conc: 14.42 ng/ml



#4 Heptachlor
 R.T.: 3.867 min
 Delta R.T.: 0.000 min
 Response: 39078582
 Conc: 12.59 ng/ml



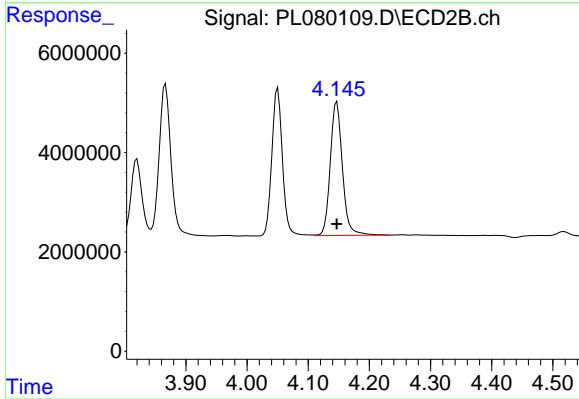
#5 Aldrin

R.T.: 5.086 min
 Delta R.T.: 0.005 min
 Response: 27366916
 Conc: 13.79 ng/ml

Instrument :
 ECD_L
 ClientSampleId :
 PB149852BSD

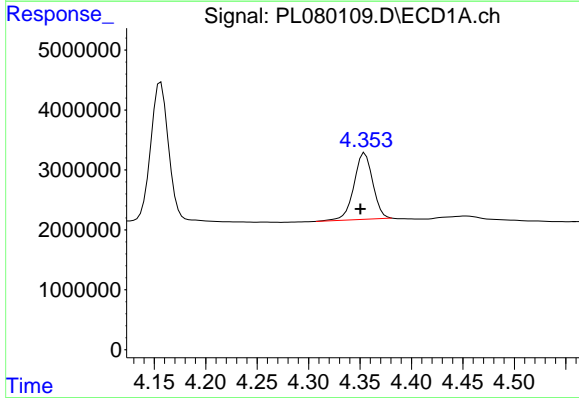
Manual Integrations
 APPROVED

Reviewed By :Abdul Mirza 01/06/2023
 Supervised By :Ankita Jodhani 01/06/2023



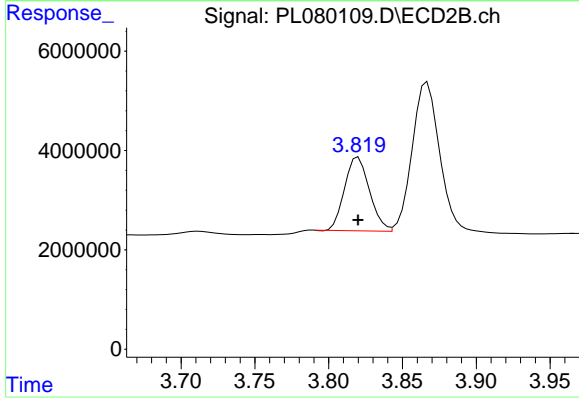
#5 Aldrin

R.T.: 4.147 min
 Delta R.T.: 0.000 min
 Response: 37114562
 Conc: 12.58 ng/ml



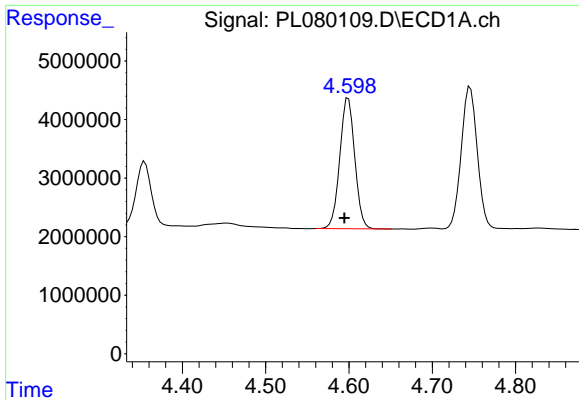
#6 beta-BHC

R.T.: 4.355 min
 Delta R.T.: 0.004 min
 Response: 14161665
 Conc: 15.47 ng/ml



#6 beta-BHC

R.T.: 3.820 min
 Delta R.T.: 0.000 min
 Response: 17468453
 Conc: 13.02 ng/ml

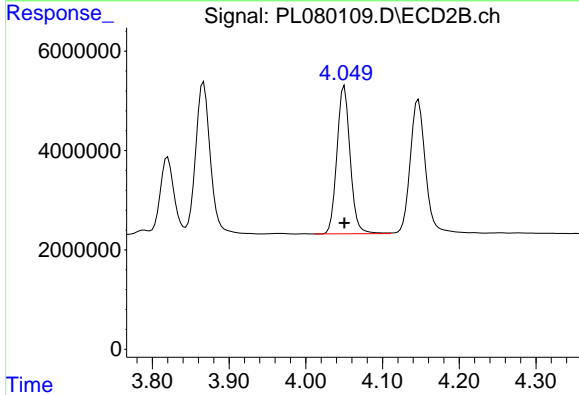


#7 delta-BHC
 R.T.: 4.599 min
 Delta R.T.: 0.005 min
 Response: 27935017
 Conc: 13.91 ng/ml

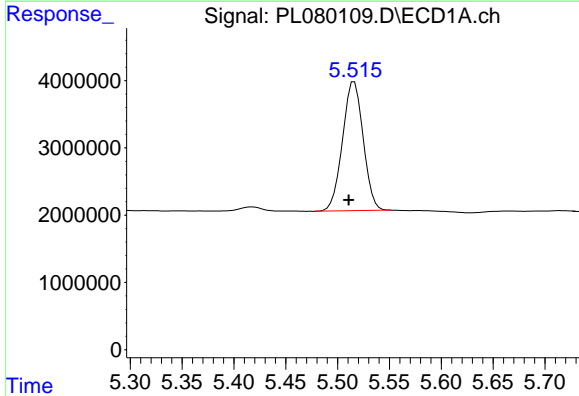
Instrument :
 ECD_L
 ClientSampleId :
 PB149852BSD

Manual Integrations
 APPROVED

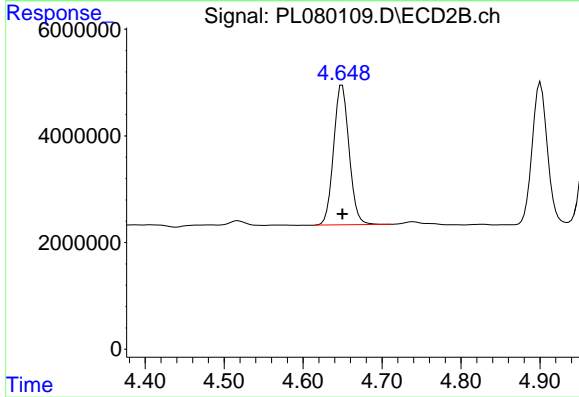
Reviewed By :Abdul Mirza 01/06/2023
 Supervised By :Ankita Jodhani 01/06/2023



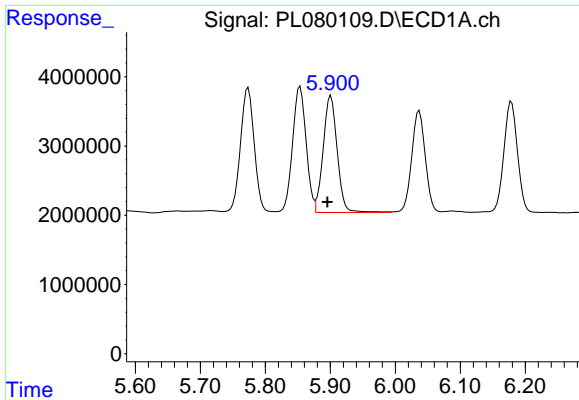
#7 delta-BHC
 R.T.: 4.050 min
 Delta R.T.: 0.000 min
 Response: 35709381
 Conc: 12.15 ng/ml



#8 Heptachlor epoxide
 R.T.: 5.516 min
 Delta R.T.: 0.005 min
 Response: 26600064
 Conc: 14.62 ng/ml



#8 Heptachlor epoxide
 R.T.: 4.649 min
 Delta R.T.: 0.000 min
 Response: 35727040
 Conc: 13.04 ng/ml



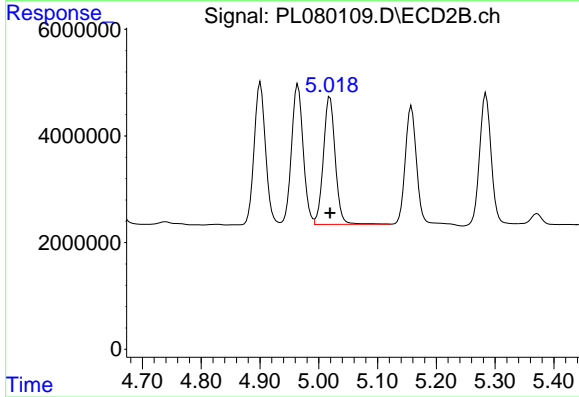
#9 Endosulfan I

R.T.: 5.901 min
 Delta R.T.: 0.005 min
 Response: 25315060
 Conc: 14.75 ng/ml

Instrument :
 ECD_L
 ClientSampleId :
 PB149852BSD

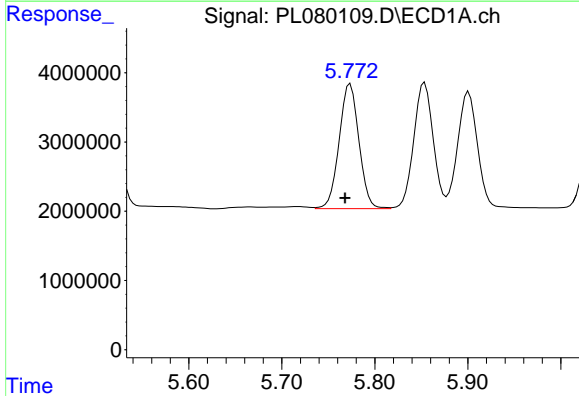
Manual Integrations
 APPROVED

Reviewed By :Abdul Mirza 01/06/2023
 Supervised By :Ankita Jodhani 01/06/2023



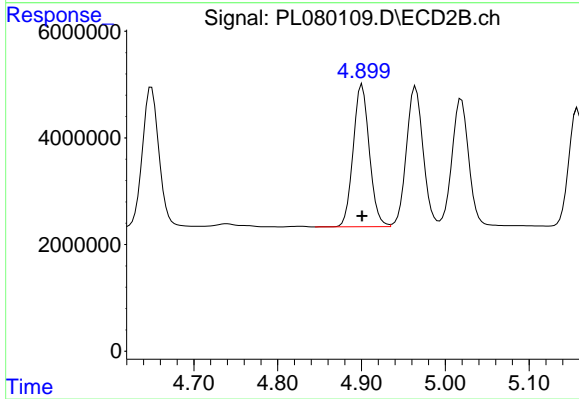
#9 Endosulfan I

R.T.: 5.019 min
 Delta R.T.: 0.000 min
 Response: 33515407
 Conc: 12.94 ng/ml



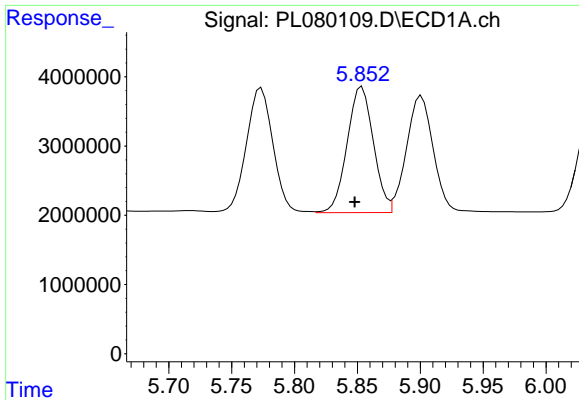
#10 gamma-Chlordane

R.T.: 5.774 min
 Delta R.T.: 0.006 min
 Response: 26666273
 Conc: 14.78 ng/ml



#10 gamma-Chlordane

R.T.: 4.901 min
 Delta R.T.: 0.000 min
 Response: 35836068
 Conc: 12.84 ng/ml



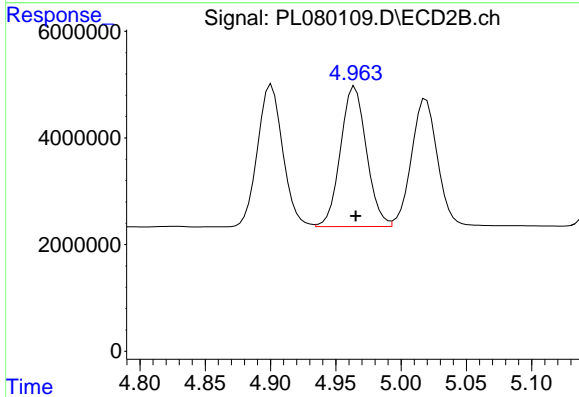
#11 alpha-Chlordane

R.T.: 5.854 min
 Delta R.T.: 0.006 min
 Response: 26421170
 Conc: 14.69 ng/ml

Instrument :
 ECD_L
 ClientSampleId :
 PB149852BSD

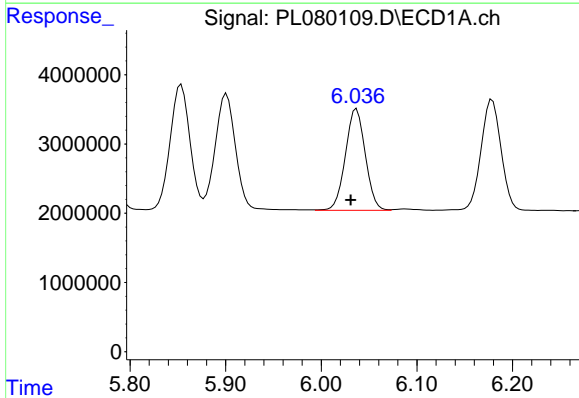
Manual Integrations
 APPROVED

Reviewed By :Abdul Mirza 01/06/2023
 Supervised By :Ankita Jodhani 01/06/2023



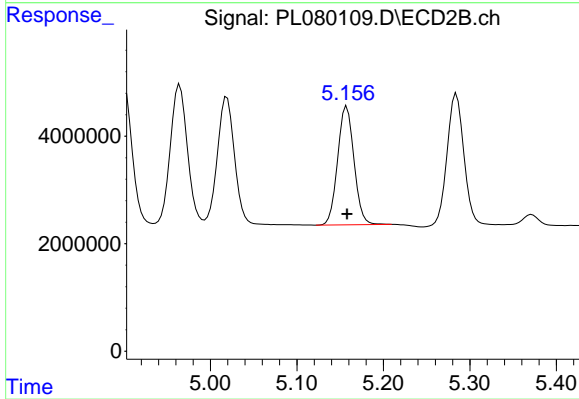
#11 alpha-Chlordane

R.T.: 4.965 min
 Delta R.T.: 0.000 min
 Response: 36362783
 Conc: 13.02 ng/ml



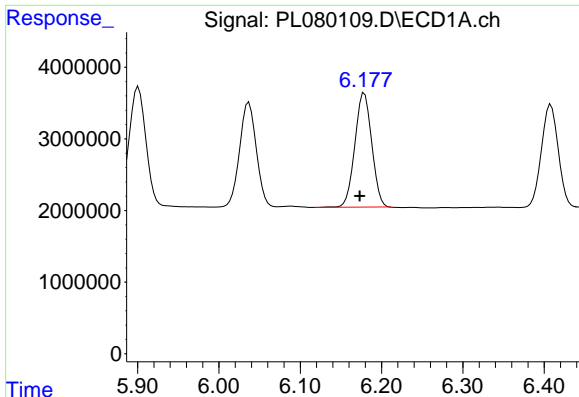
#12 4,4'-DDE

R.T.: 6.037 min
 Delta R.T.: 0.006 min
 Response: 21279749
 Conc: 13.52 ng/ml



#12 4,4'-DDE

R.T.: 5.158 min
 Delta R.T.: 0.000 min
 Response: 28815692
 Conc: 12.42 ng/ml



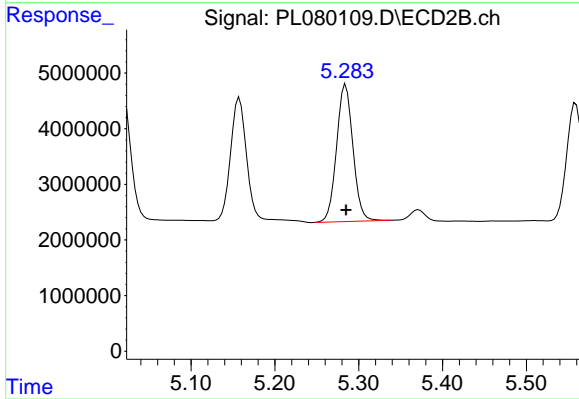
#13 Dieldrin

R.T.: 6.179 min
 Delta R.T.: 0.006 min
 Response: 22954695
 Conc: 13.41 ng/ml

Instrument :
 ECD_L
 ClientSampleId :
 PB149852BSD

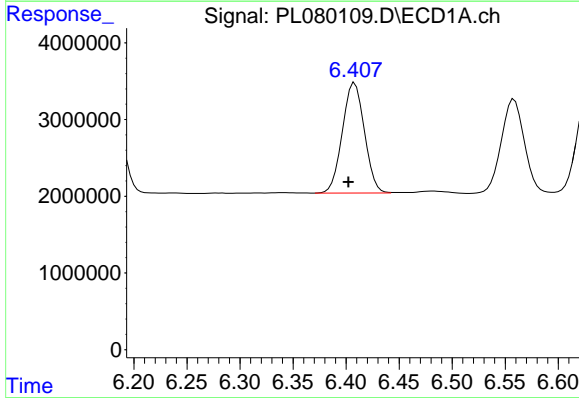
Manual Integrations
 APPROVED

Reviewed By :Abdul Mirza 01/06/2023
 Supervised By :Ankita Jodhani 01/06/2023



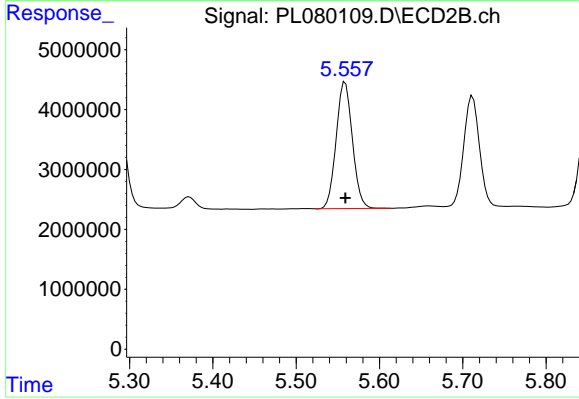
#13 Dieldrin

R.T.: 5.285 min
 Delta R.T.: 0.000 min
 Response: 33478429
 Conc: 12.80 ng/ml



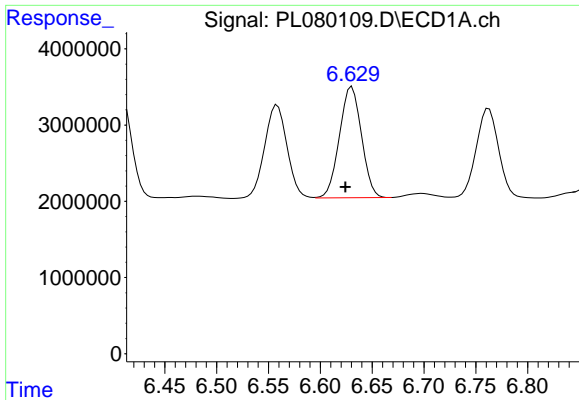
#14 Endrin

R.T.: 6.408 min
 Delta R.T.: 0.006 min
 Response: 20787298
 Conc: 13.55 ng/ml



#14 Endrin

R.T.: 5.559 min
 Delta R.T.: 0.000 min
 Response: 28647283
 Conc: 12.73 ng/ml



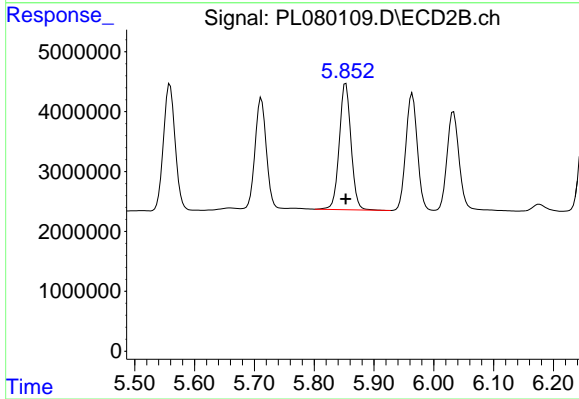
#15 Endosulfan II

R.T.: 6.630 min
 Delta R.T.: 0.006 min
 Response: 21595762
 Conc: 14.03 ng/ml

Instrument :
 ECD_L
 ClientSampleId :
 PB149852BSD

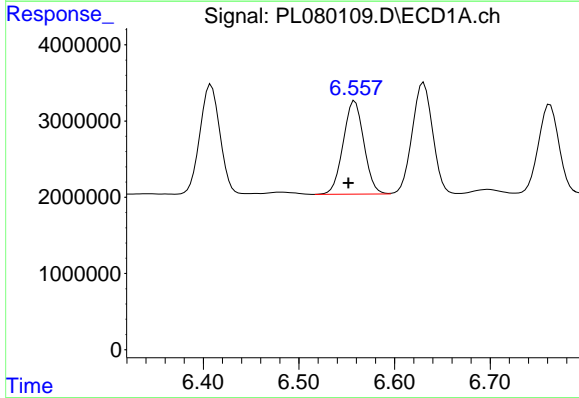
Manual Integrations
 APPROVED

Reviewed By :Abdul Mirza 01/06/2023
 Supervised By :Ankita Jodhani 01/06/2023



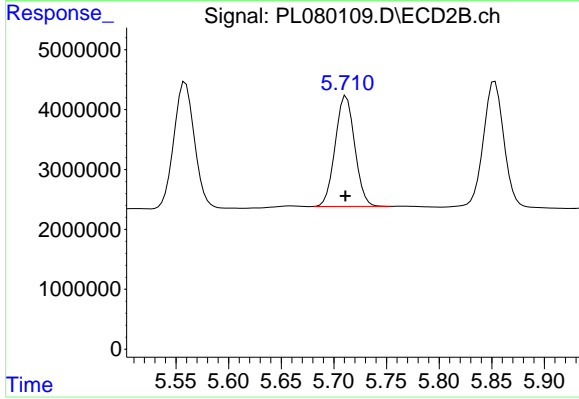
#15 Endosulfan II

R.T.: 5.853 min
 Delta R.T.: 0.000 min
 Response: 28853904
 Conc: 13.29 ng/ml



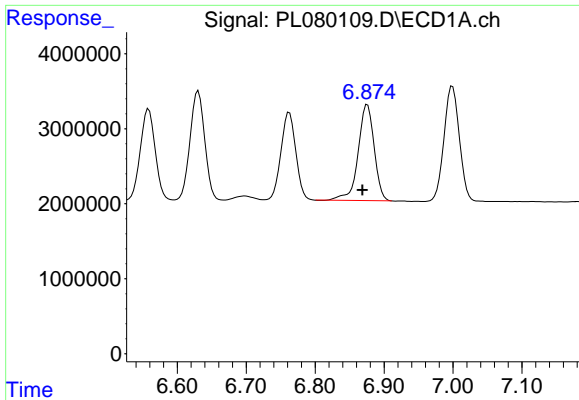
#16 4,4'-DDD

R.T.: 6.559 min
 Delta R.T.: 0.007 min
 Response: 18465879
 Conc: 14.03 ng/ml



#16 4,4'-DDD

R.T.: 5.712 min
 Delta R.T.: 0.000 min
 Response: 23914292
 Conc: 12.96 ng/ml



#17 4,4'-DDT

R.T.: 6.876 min
 Delta R.T.: 0.007 min
 Response: 20706595
 Conc: 13.85 ng/ml

Instrument :

ECD_L

ClientSampleId :

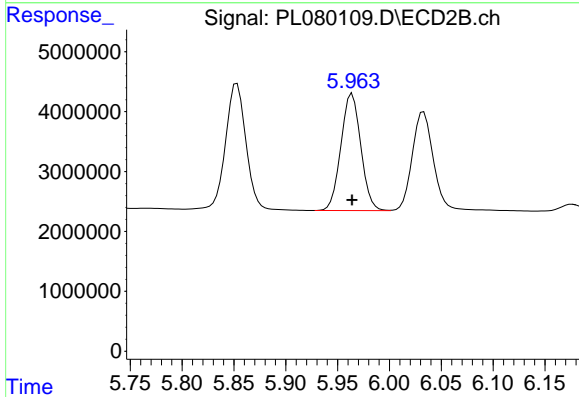
PB149852BSD

Manual Integrations

APPROVED

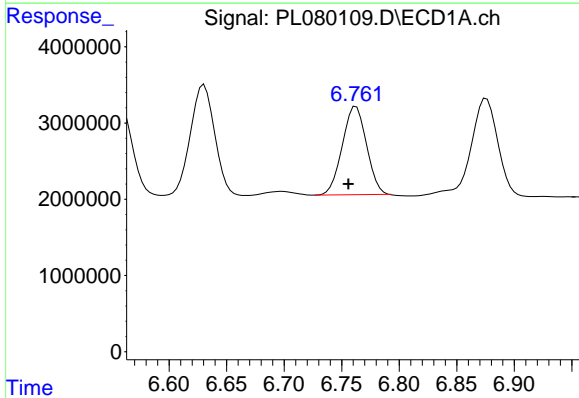
Reviewed By :Abdul Mirza 01/06/2023

Supervised By :Ankita Jodhani 01/06/2023



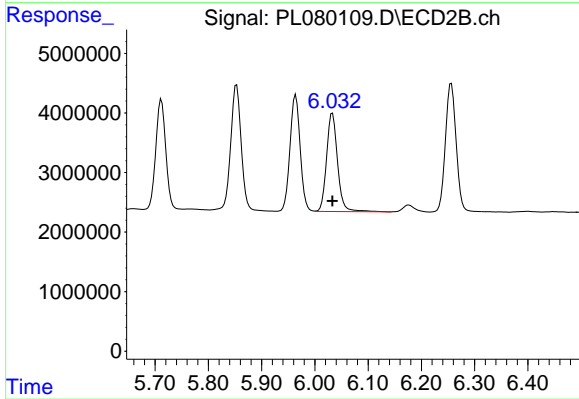
#17 4,4'-DDT

R.T.: 5.964 min
 Delta R.T.: 0.000 min
 Response: 26118688
 Conc: 12.83 ng/ml



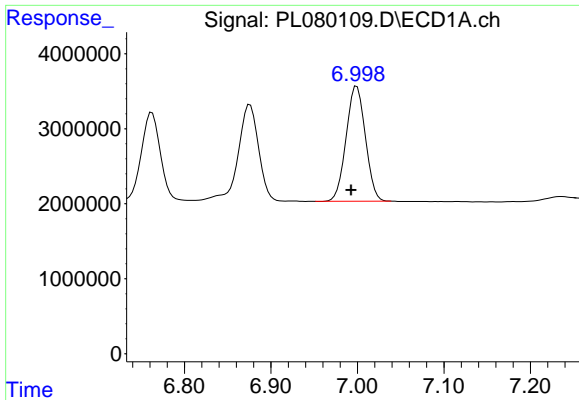
#18 Endrin aldehyde

R.T.: 6.763 min
 Delta R.T.: 0.007 min
 Response: 17075353
 Conc: 14.05 ng/ml



#18 Endrin aldehyde

R.T.: 6.033 min
 Delta R.T.: 0.000 min
 Response: 23757065
 Conc: 13.53 ng/ml

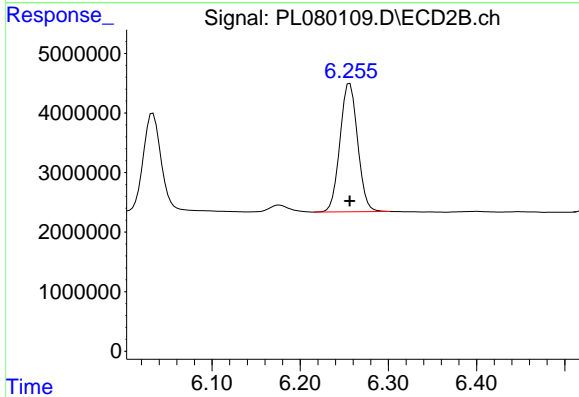


#19 Endosulfan Sulfate
 R.T.: 6.999 min
 Delta R.T.: 0.006 min
 Response: 23691883
 Conc: 14.49 ng/ml

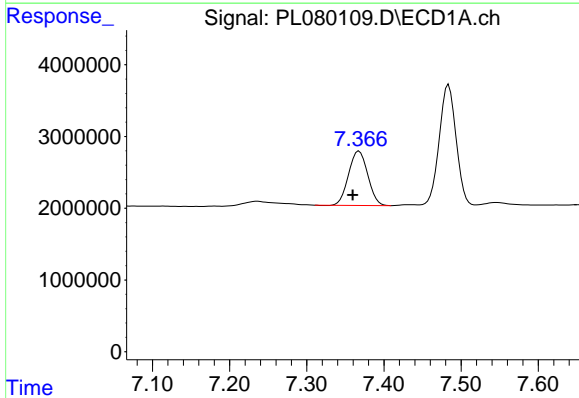
Instrument :
 ECD_L
 ClientSampleId :
 PB149852BSD

Manual Integrations
 APPROVED

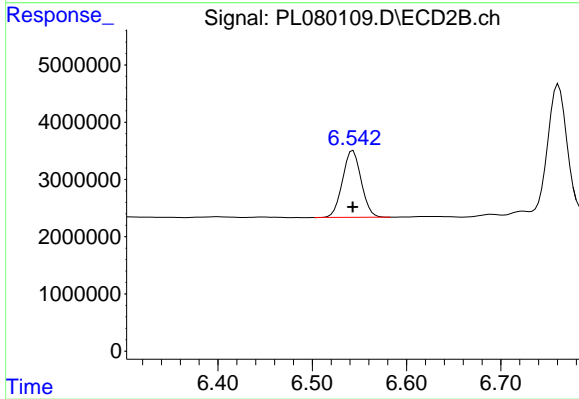
Reviewed By :Abdul Mirza 01/06/2023
 Supervised By :Ankita Jodhani 01/06/2023



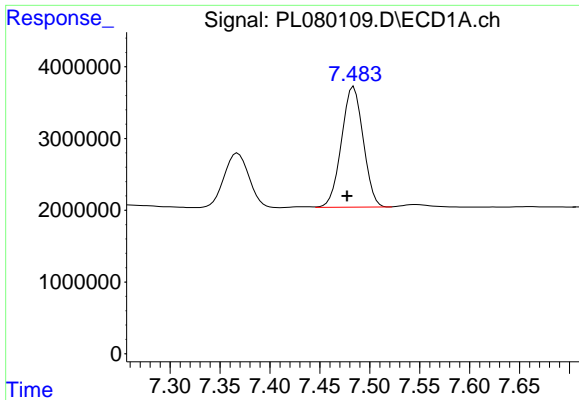
#19 Endosulfan Sulfate
 R.T.: 6.256 min
 Delta R.T.: 0.000 min
 Response: 29984860
 Conc: 13.50 ng/ml



#20 Methoxychlor
 R.T.: 7.368 min
 Delta R.T.: 0.008 min
 Response: 13071625
 Conc: 14.70 ng/ml



#20 Methoxychlor
 R.T.: 6.543 min
 Delta R.T.: 0.000 min
 Response: 16100953
 Conc: 14.05 ng/ml



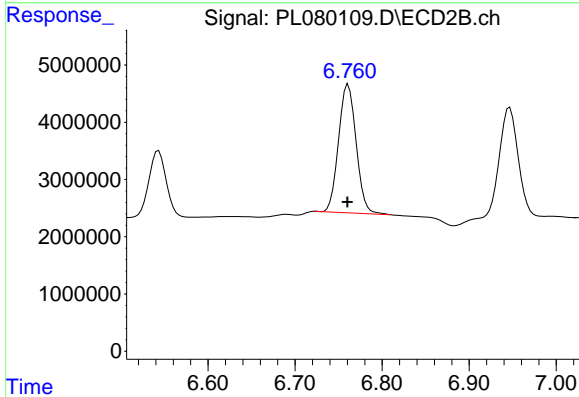
#21 Endrin ketone

R.T.: 7.484 min
 Delta R.T.: 0.007 min
 Response: 25465129
 Conc: 14.31 ng/ml

Instrument :
 ECD_L
 ClientSampleId :
 PB149852BSD

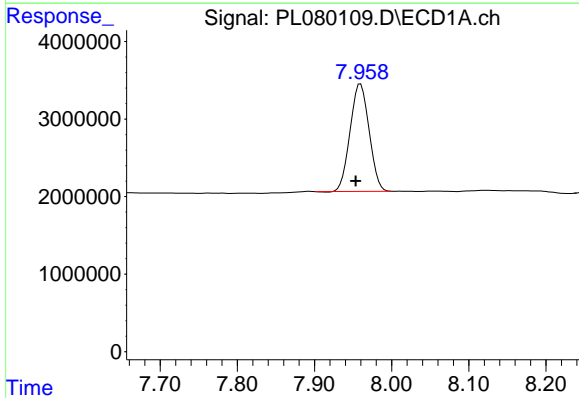
Manual Integrations
 APPROVED

Reviewed By :Abdul Mirza 01/06/2023
 Supervised By :Ankita Jodhani 01/06/2023



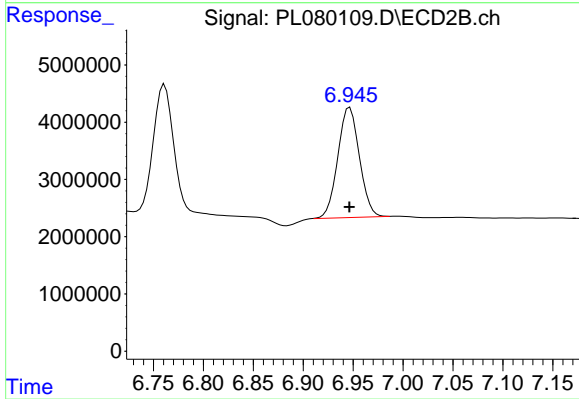
#21 Endrin ketone

R.T.: 6.761 min
 Delta R.T.: 0.001 min
 Response: 31405222
 Conc: 12.89 ng/ml



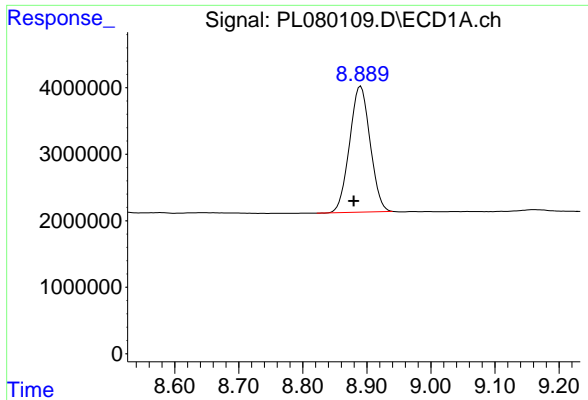
#22 Mirex

R.T.: 7.960 min
 Delta R.T.: 0.006 min
 Response: 23753621
 Conc: 15.32 ng/ml



#22 Mirex

R.T.: 6.945 min
 Delta R.T.: -0.001 min
 Response: 28926172
 Conc: 14.01 ng/ml m



#28 Decachlorobiphenyl

R.T.: 8.890 min
Delta R.T.: 0.011 min
Response: 42242003
Conc: 24.62 ng/ml

Instrument :

ECD_L

ClientSampleId :

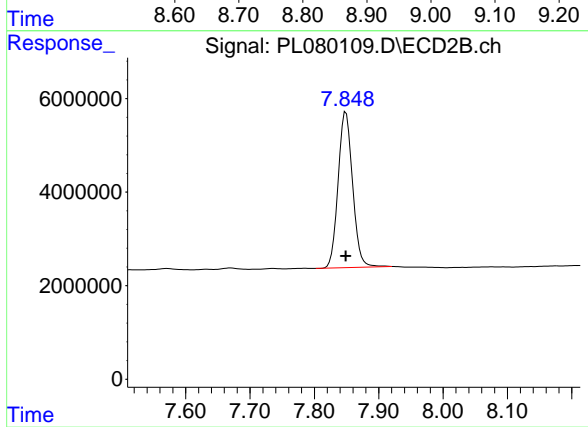
PB149852BSD

Manual Integrations

APPROVED

Reviewed By :Abdul Mirza 01/06/2023

Supervised By :Ankita Jodhani 01/06/2023



#28 Decachlorobiphenyl

R.T.: 7.849 min
Delta R.T.: 0.000 min
Response: 52152551
Conc: 23.08 ng/ml