

Data Path : Z:\pestpcbsrv\HPCHEM1\ECD_L\Data\PL010523\
 Data File : PL080113.D
 Signal(s) : Signal #1: ECD1A.ch Signal #2: ECD2B.ch
 Acq On : 05 Jan 2023 14:23
 Operator : AR\AJ
 Sample : PSTDCCC050
 Misc :
 ALS Vial : 4 Sample Multiplier: 1

Instrument :
 ECD_L
 ClientSampleId :
 PSTDCCC050

Integration File signal 1: autoint1.e
 Integration File signal 2: autoint2.e
 Quant Time: Jan 05 20:26:49 2023
 Quant Method : Z:\pestpcbsrv\HPCHEM1\ECD_L\methods\PL010423.M
 Quant Title : GC Extractables
 QLast Update : Thu Jan 05 05:11:24 2023
 Response via : Initial Calibration
 Integrator: ChemStation

Volume Inj. : 1 µl
 Signal #1 Phase : ZB-MR2 Signal #2 Phase: ZB-MR1
 Signal #1 Info : 30M x 0.32mm x0.2 Signal #2 Info : 30M x 0.32mm x0.5µm

	Compound	RT#1	RT#2	Resp#1	Resp#2	ng/ml	ng/ml

System Monitoring Compounds							
1)	SA Tetrachlo...	3.372	2.693	104.5E6	113.1E6	52.517	49.749
28)	SA Decachlor...	8.887	7.847	83407171	106.2E6	48.613	47.005
Target Compounds							
2)	A alpha-BHC	3.823	3.195	150.9E6	163.2E6	52.820	48.736
3)	MA gamma-BHC...	4.154	3.524	108.1E6	152.4E6	54.992	49.707
4)	MA Heptachlor	4.743	3.866	116.5E6	153.6E6	52.380	49.473
5)	MB Aldrin	5.084	4.146	103.9E6	147.2E6	52.351	49.884
6)	B beta-BHC	4.353	3.819	45985631	66768625	50.238	49.767
7)	B delta-BHC	4.597	4.049	106.6E6	147.8E6	53.052	50.284
8)	B Heptachlo...	5.514	4.649	95043935	133.3E6	52.234	48.664
9)	A Endosulfan I	5.899	5.018	87495448	124.3E6	50.989	47.996
10)	B gamma-Chl...	5.771	4.900	93096906	135.4E6	51.602	48.503
11)	B alpha-Chl...	5.852	4.964	92486500	135.3E6	51.428	48.433
12)	B 4,4'-DDE	6.035	5.157	81029373	116.6E6	51.475	50.237
13)	MA Dieldrin	6.177	5.283	87308465	129.3E6	51.005	49.421
14)	MA Endrin	6.406	5.557	76477871	111.9E6	49.868	49.741
15)	B Endosulfa...	6.628	5.852	75304124	105.7E6	48.939	48.666
16)	A 4,4'-DDD	6.556	5.711	68234932	94970100	51.847	51.464
17)	MA 4,4'-DDT	6.873	5.962	74279062	100.8E6	49.686	49.502
18)	B Endrin al...	6.760	6.032	58316168	84044390	47.989	47.866
19)	B Endosulfa...	6.997	6.255	80918797	108.2E6	49.480	48.711
20)	A Methoxychlor	7.366	6.541	44276891	56422034	49.791	49.231
21)	B Endrin ke...	7.482	6.760	90229901	118.4E6	50.698	48.590
22)	Mirex	7.957	6.945	76014576	98182338	49.024	47.567

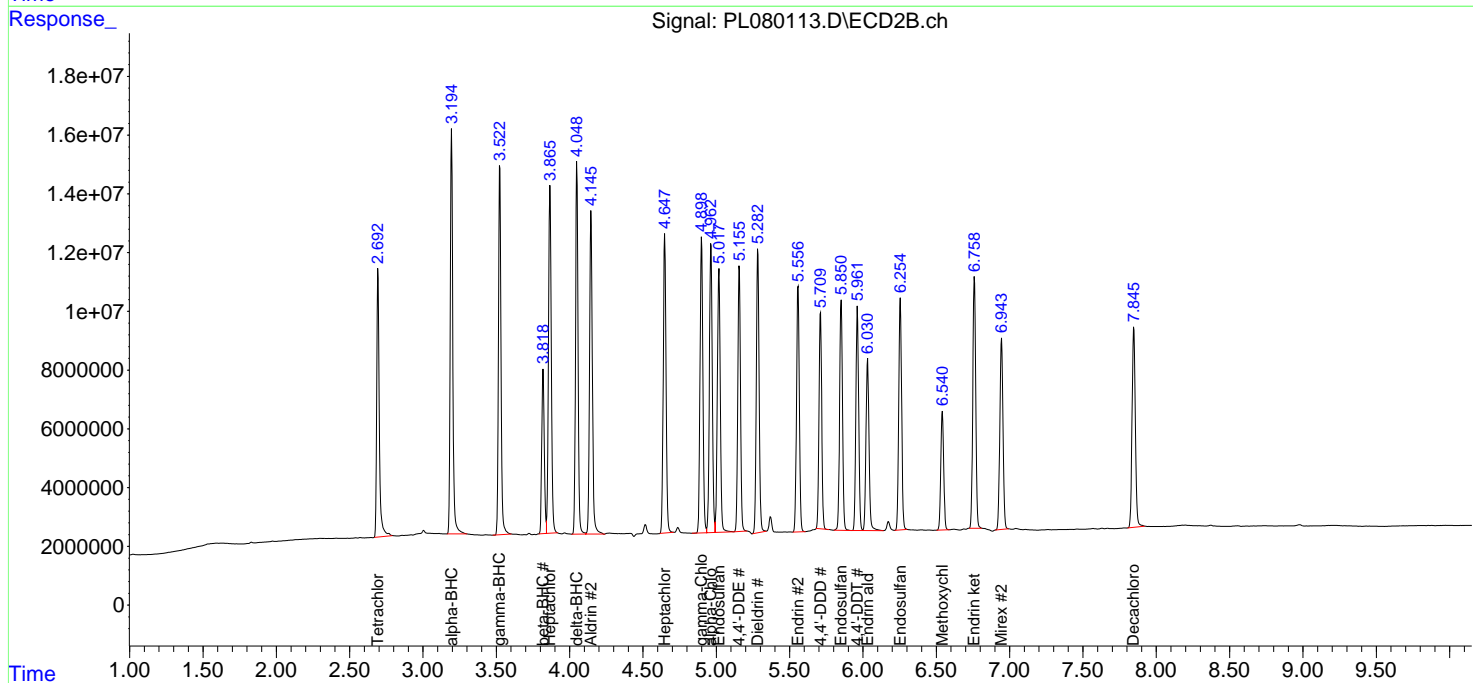
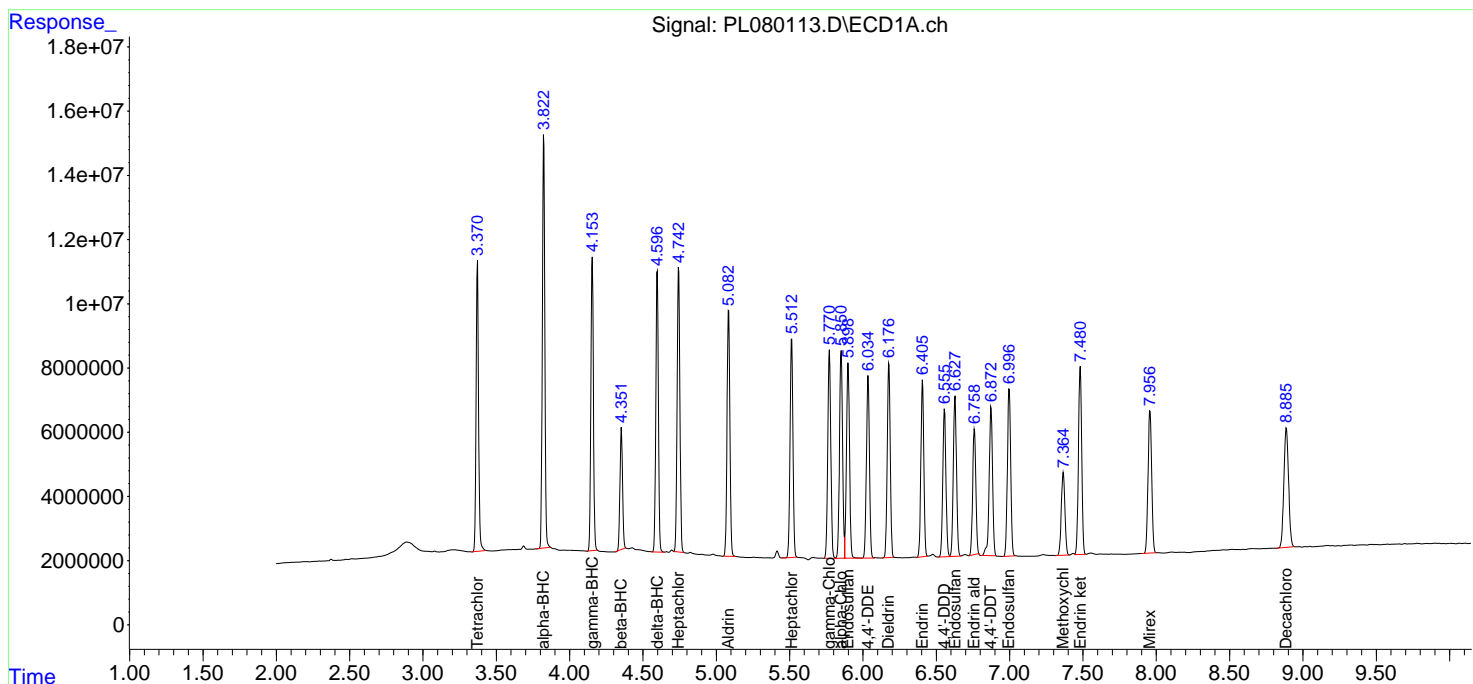
(f)=RT Delta > 1/2 Window (#)=Amounts differ by > 25% (m)=manual int.

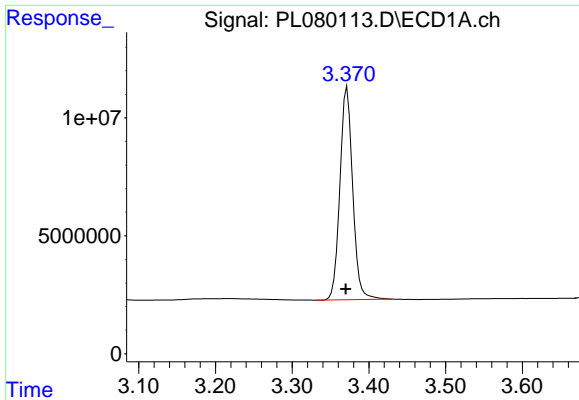
Data Path : Z:\pestpcbsrv\HPCHEM1\ECD_L\Data\PL010523\
 Data File : PL080113.D
 Signal(s) : Signal #1: ECD1A.ch Signal #2: ECD2B.ch
 Acq On : 05 Jan 2023 14:23
 Operator : AR\AJ
 Sample : PSTDCCC050
 Misc :
 ALS Vial : 4 Sample Multiplier: 1

Instrument :
 ECD_L
 ClientSampleId :
 PSTDCCC050

Integration File signal 1: autoint1.e
 Integration File signal 2: autoint2.e
 Quant Time: Jan 05 20:26:49 2023
 Quant Method : Z:\pestpcbsrv\HPCHEM1\ECD_L\methods\PL010423.M
 Quant Title : GC Extractables
 QLast Update : Thu Jan 05 05:11:24 2023
 Response via : Initial Calibration
 Integrator: ChemStation

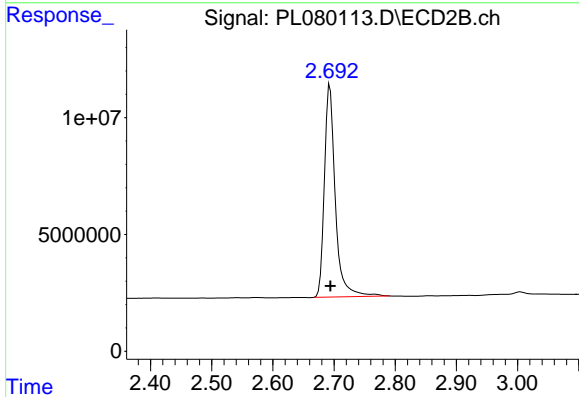
Volume Inj. : 1 µl
 Signal #1 Phase : ZB-MR2 Signal #2 Phase: ZB-MR1
 Signal #1 Info : 30M x 0.32mm x0.2 Signal #2 Info : 30M x 0.32mm x0.5µm



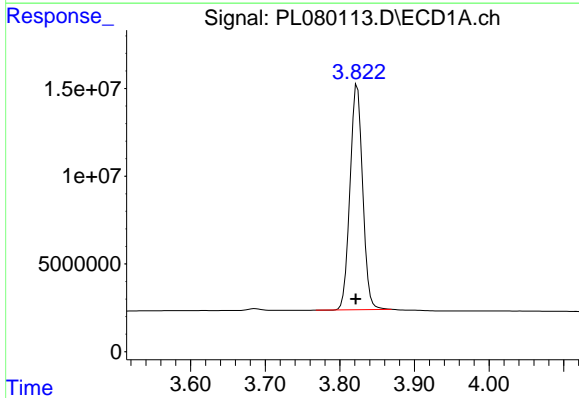


#1 Tetrachloro-m-xylene
 R.T.: 3.372 min
 Delta R.T.: 0.002 min
 Response: 104465102
 Conc: 52.52 ng/ml

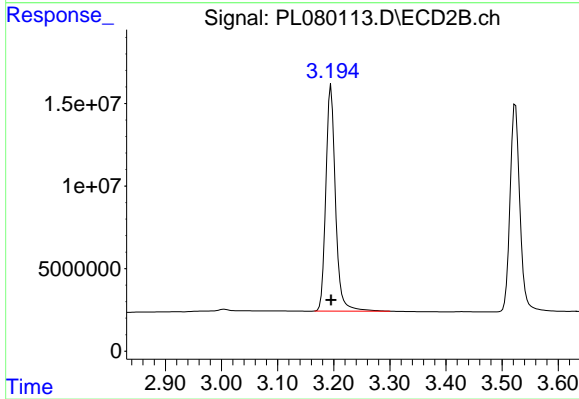
Instrument :
 ECD_L
 ClientSampleId :
 PSTDCCC050



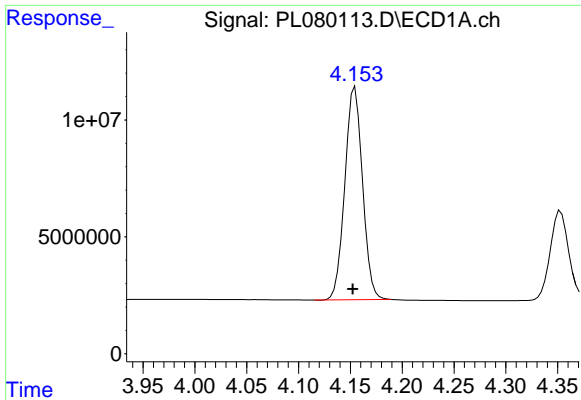
#1 Tetrachloro-m-xylene
 R.T.: 2.693 min
 Delta R.T.: 0.000 min
 Response: 113119489
 Conc: 49.75 ng/ml



#2 alpha-BHC
 R.T.: 3.823 min
 Delta R.T.: 0.002 min
 Response: 150909802
 Conc: 52.82 ng/ml



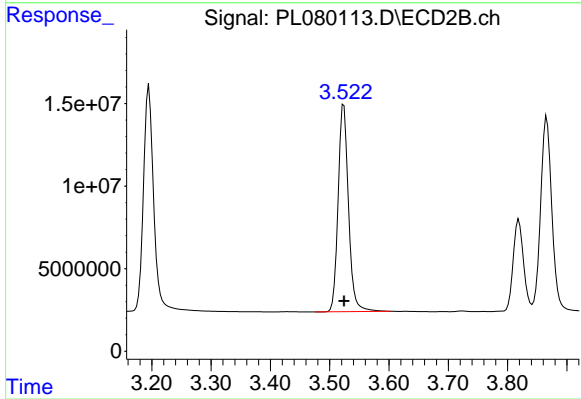
#2 alpha-BHC
 R.T.: 3.195 min
 Delta R.T.: 0.000 min
 Response: 163228686
 Conc: 48.74 ng/ml



#3 gamma-BHC (Lindane)

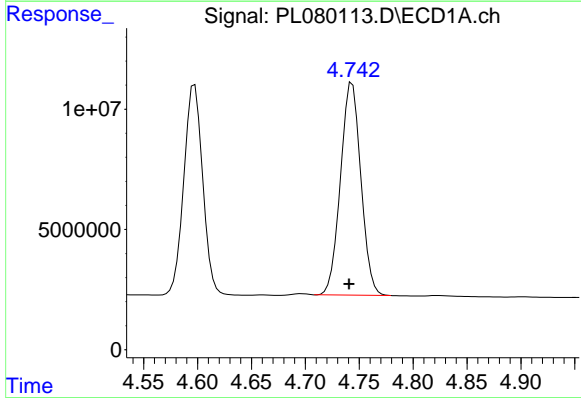
R.T.: 4.154 min
 Delta R.T.: 0.002 min
 Response: 108076854
 Conc: 54.99 ng/ml

Instrument :
 ECD_L
 ClientSampleId :
 PSTDCCC050



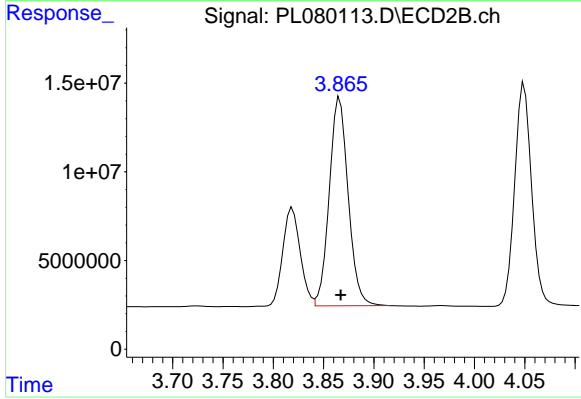
#3 gamma-BHC (Lindane)

R.T.: 3.524 min
 Delta R.T.: 0.000 min
 Response: 152436006
 Conc: 49.71 ng/ml



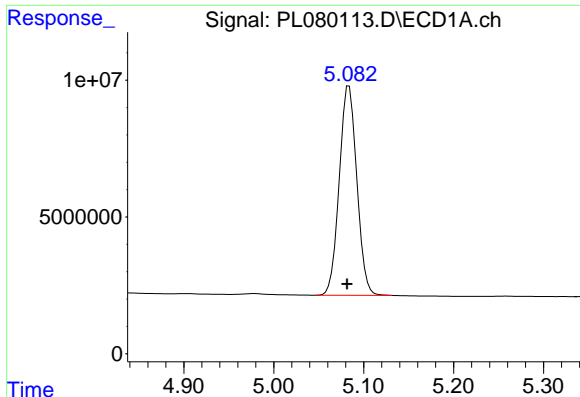
#4 Heptachlor

R.T.: 4.743 min
 Delta R.T.: 0.003 min
 Response: 116475651
 Conc: 52.38 ng/ml



#4 Heptachlor

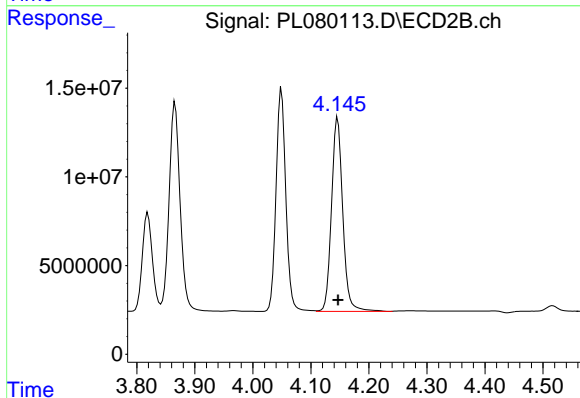
R.T.: 3.866 min
 Delta R.T.: -0.001 min
 Response: 153581586
 Conc: 49.47 ng/ml



#5 Aldrin

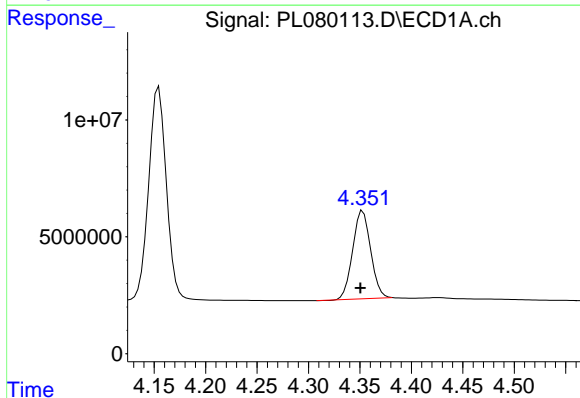
R.T.: 5.084 min
 Delta R.T.: 0.002 min
 Response: 103881068
 Conc: 52.35 ng/ml

Instrument :
 ECD_L
 ClientSampleId :
 PSTDCCC050



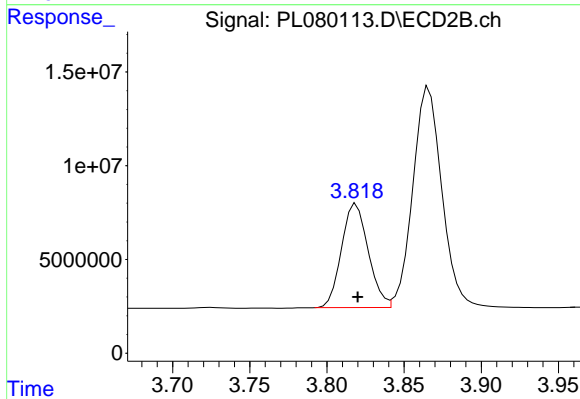
#5 Aldrin

R.T.: 4.146 min
 Delta R.T.: 0.000 min
 Response: 147206621
 Conc: 49.88 ng/ml



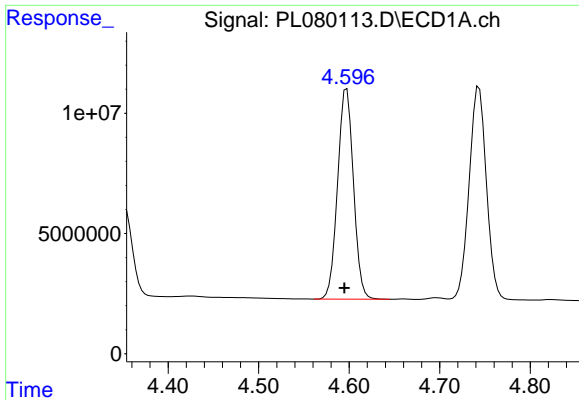
#6 beta-BHC

R.T.: 4.353 min
 Delta R.T.: 0.002 min
 Response: 45985631
 Conc: 50.24 ng/ml



#6 beta-BHC

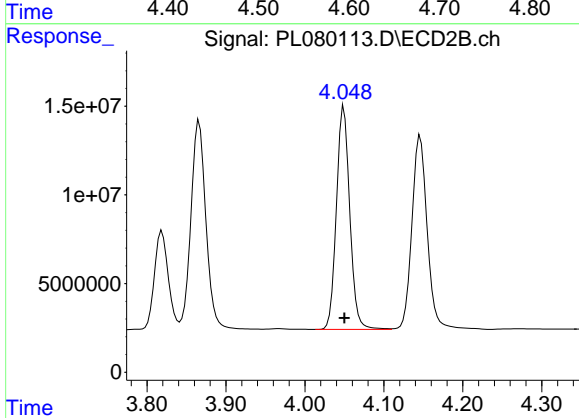
R.T.: 3.819 min
 Delta R.T.: 0.000 min
 Response: 66768625
 Conc: 49.77 ng/ml



#7 delta-BHC

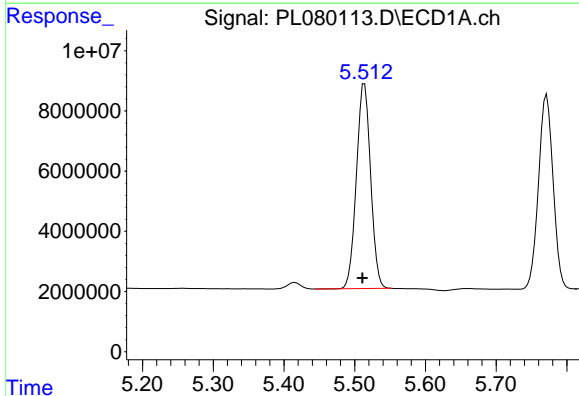
R.T.: 4.597 min
 Delta R.T.: 0.003 min
 Response: 106560685
 Conc: 53.05 ng/ml

Instrument :
 ECD_L
 ClientSampleId :
 PSTDCCC050



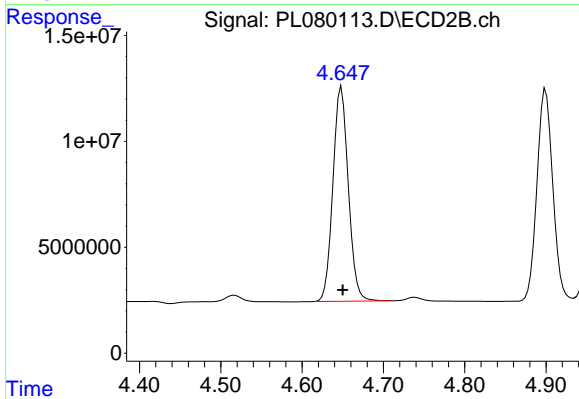
#7 delta-BHC

R.T.: 4.049 min
 Delta R.T.: 0.000 min
 Response: 147840579
 Conc: 50.28 ng/ml



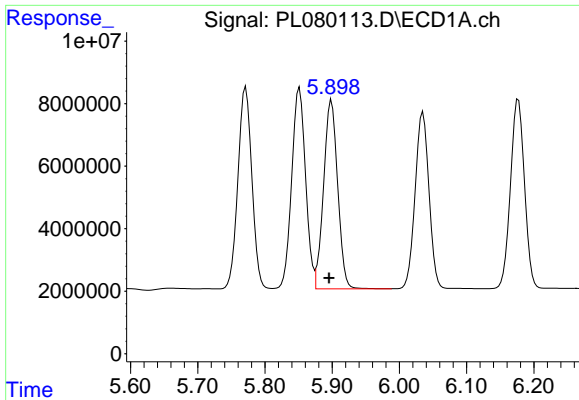
#8 Heptachlor epoxide

R.T.: 5.514 min
 Delta R.T.: 0.003 min
 Response: 95043935
 Conc: 52.23 ng/ml



#8 Heptachlor epoxide

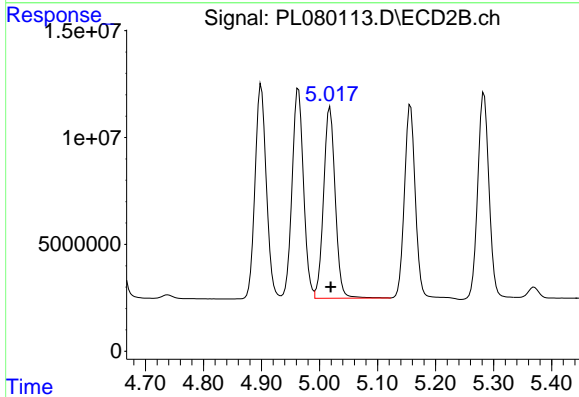
R.T.: 4.649 min
 Delta R.T.: -0.001 min
 Response: 133318570
 Conc: 48.66 ng/ml



#9 Endosulfan I

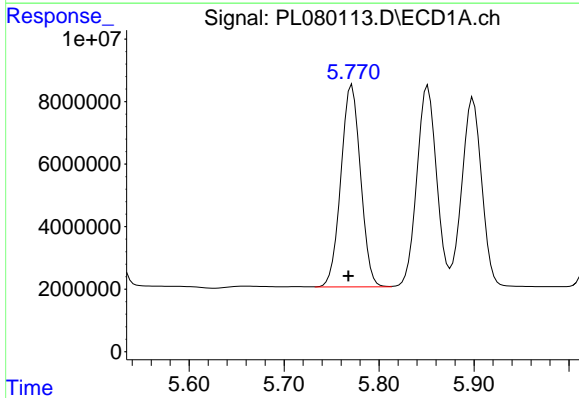
R.T.: 5.899 min
 Delta R.T.: 0.004 min
 Response: 87495448
 Conc: 50.99 ng/ml

Instrument :
 ECD_L
 ClientSampleId :
 PSTDCCC050



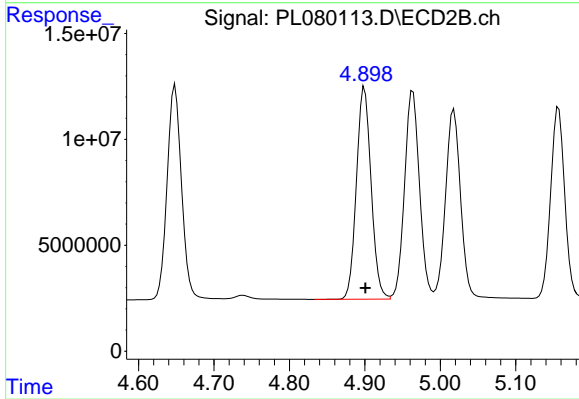
#9 Endosulfan I

R.T.: 5.018 min
 Delta R.T.: -0.001 min
 Response: 124313912
 Conc: 48.00 ng/ml



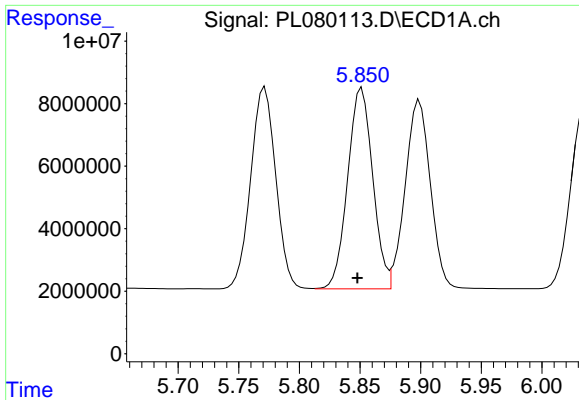
#10 gamma-Chlordane

R.T.: 5.771 min
 Delta R.T.: 0.004 min
 Response: 93096906
 Conc: 51.60 ng/ml



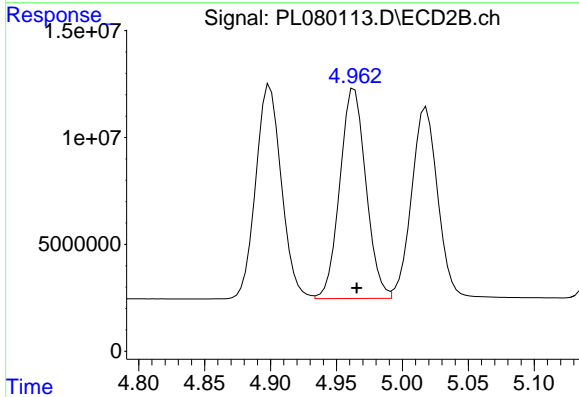
#10 gamma-Chlordane

R.T.: 4.900 min
 Delta R.T.: -0.001 min
 Response: 135373918
 Conc: 48.50 ng/ml

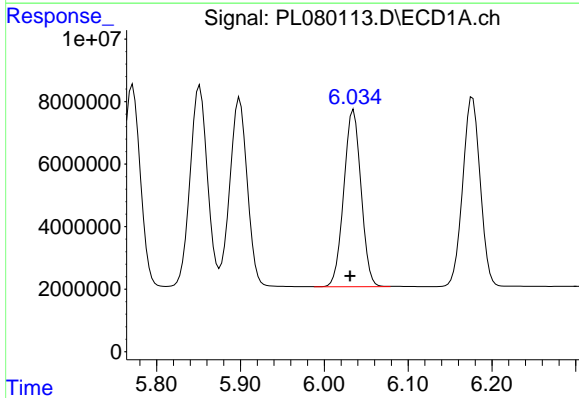


#11 alpha-Chlordane
 R.T.: 5.852 min
 Delta R.T.: 0.004 min
 Response: 92486500
 Conc: 51.43 ng/ml

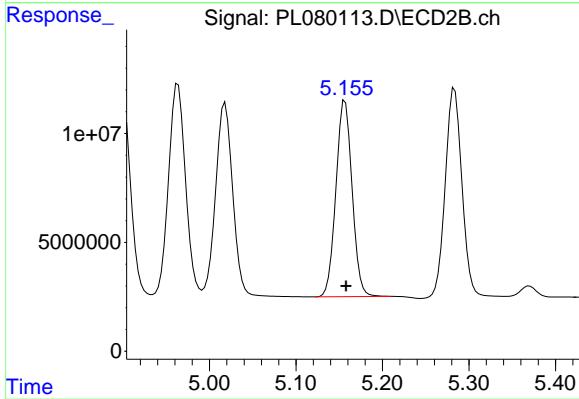
Instrument :
 ECD_L
 ClientSampleId :
 PSTDCCC050



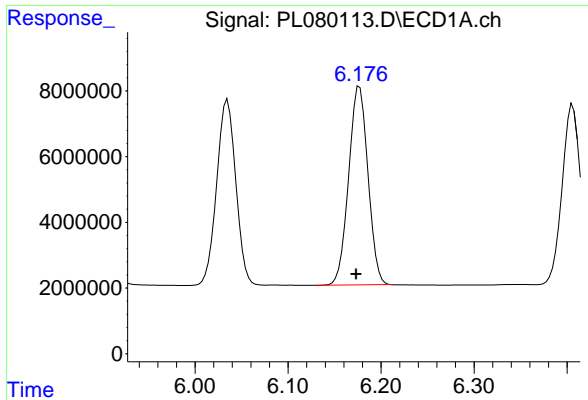
#11 alpha-Chlordane
 R.T.: 4.964 min
 Delta R.T.: -0.002 min
 Response: 135316582
 Conc: 48.43 ng/ml



#12 4,4'-DDE
 R.T.: 6.035 min
 Delta R.T.: 0.004 min
 Response: 81029373
 Conc: 51.48 ng/ml

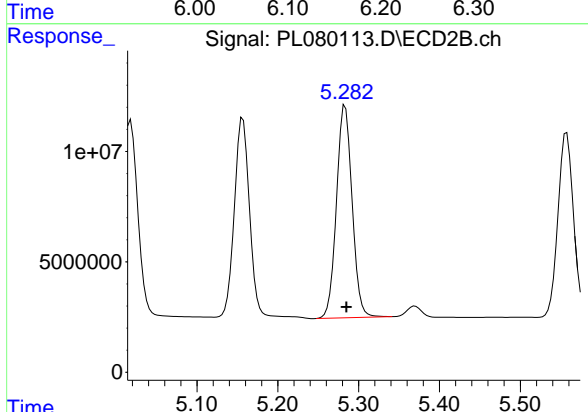


#12 4,4'-DDE
 R.T.: 5.157 min
 Delta R.T.: -0.001 min
 Response: 116565467
 Conc: 50.24 ng/ml

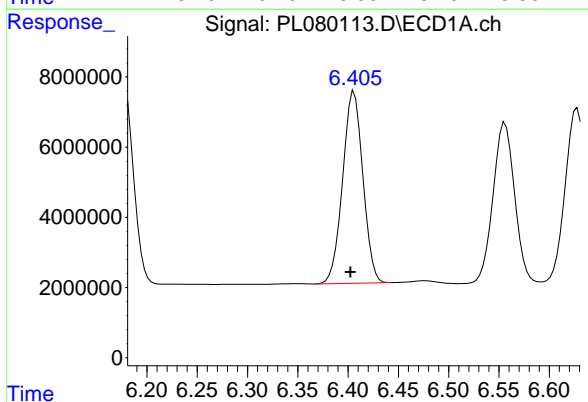


#13 Dieldrin
 R.T.: 6.177 min
 Delta R.T.: 0.004 min
 Response: 87308465
 Conc: 51.00 ng/ml

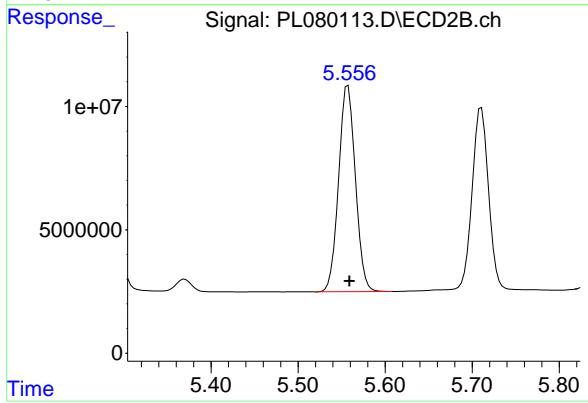
Instrument :
 ECD_L
 ClientSampleId :
 PSTDCCC050



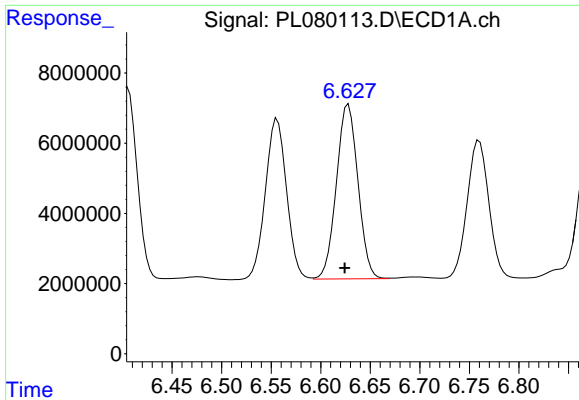
#13 Dieldrin
 R.T.: 5.283 min
 Delta R.T.: -0.001 min
 Response: 129264274
 Conc: 49.42 ng/ml



#14 Endrin
 R.T.: 6.406 min
 Delta R.T.: 0.004 min
 Response: 76477871
 Conc: 49.87 ng/ml



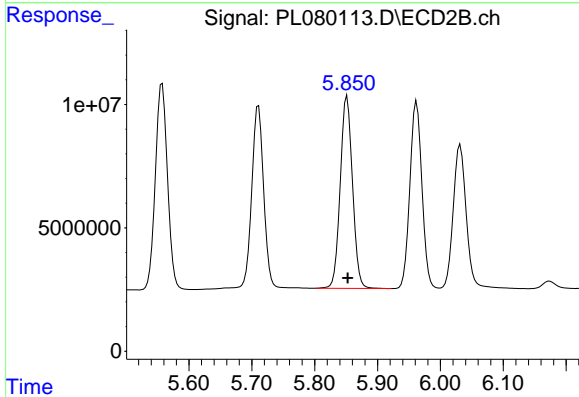
#14 Endrin
 R.T.: 5.557 min
 Delta R.T.: -0.002 min
 Response: 111941828
 Conc: 49.74 ng/ml



#15 Endosulfan II

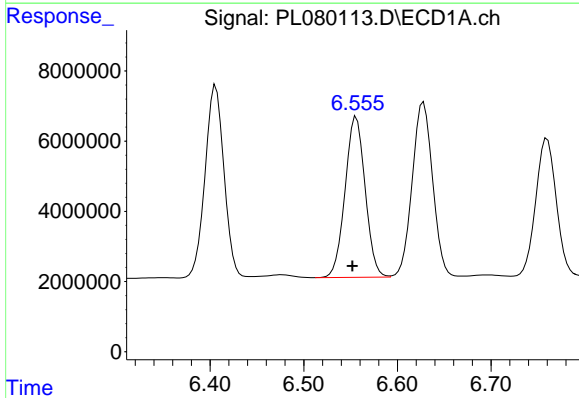
R.T.: 6.628 min
 Delta R.T.: 0.004 min
 Response: 75304124
 Conc: 48.94 ng/ml

Instrument :
 ECD_L
 ClientSampleId :
 PSTDCCC050



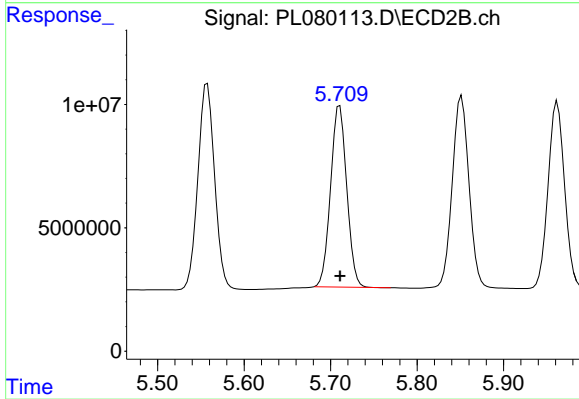
#15 Endosulfan II

R.T.: 5.852 min
 Delta R.T.: -0.001 min
 Response: 105660381
 Conc: 48.67 ng/ml



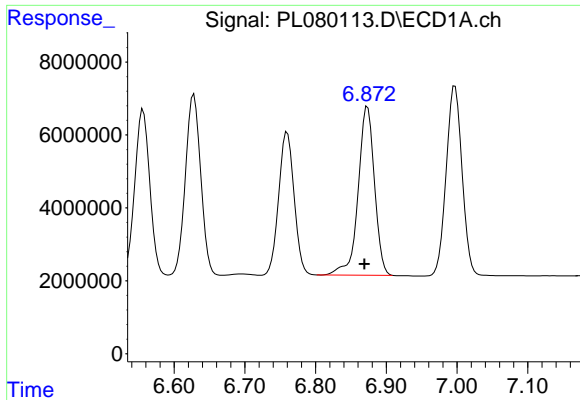
#16 4,4'-DDD

R.T.: 6.556 min
 Delta R.T.: 0.004 min
 Response: 68234932
 Conc: 51.85 ng/ml



#16 4,4'-DDD

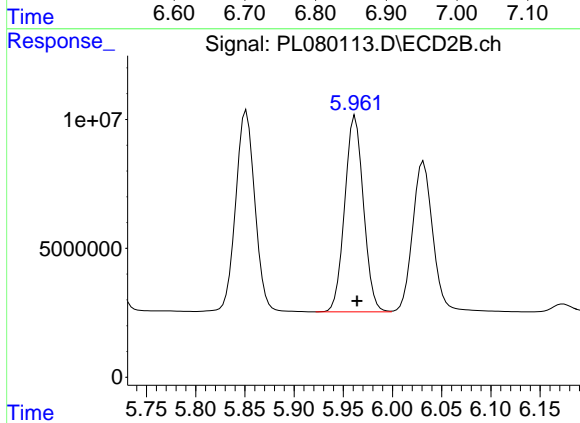
R.T.: 5.711 min
 Delta R.T.: 0.000 min
 Response: 94970100
 Conc: 51.46 ng/ml



#17 4,4'-DDT

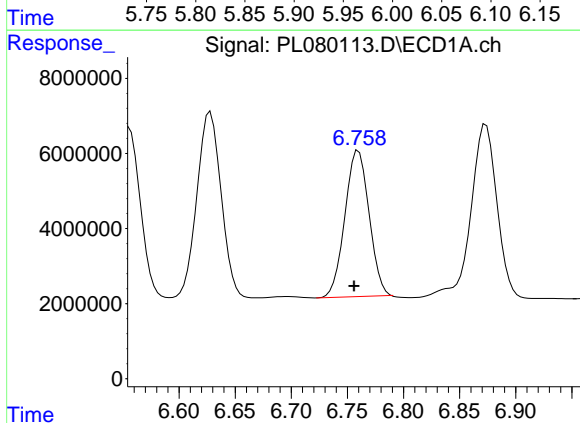
R.T.: 6.873 min
 Delta R.T.: 0.005 min
 Response: 74279062
 Conc: 49.69 ng/ml

Instrument :
 ECD_L
 ClientSampleId :
 PSTDCCC050



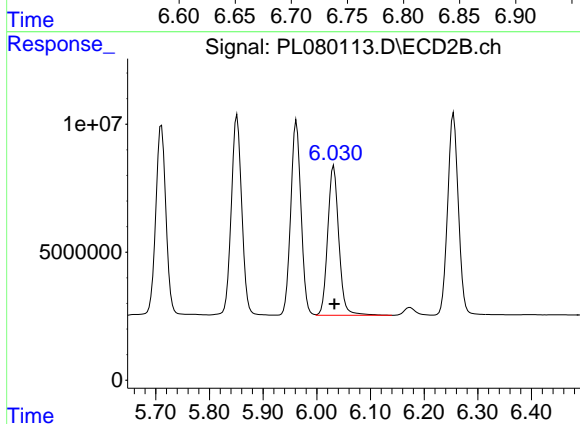
#17 4,4'-DDT

R.T.: 5.962 min
 Delta R.T.: -0.002 min
 Response: 100795693
 Conc: 49.50 ng/ml



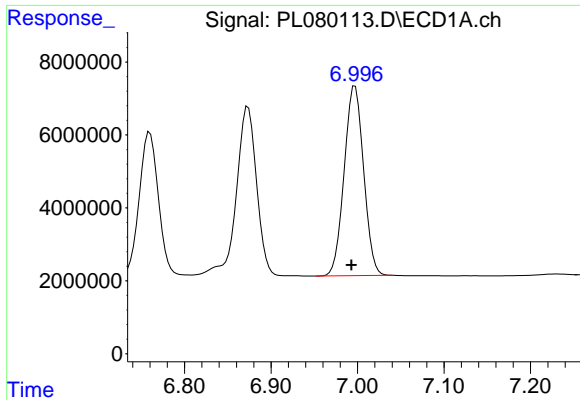
#18 Endrin aldehyde

R.T.: 6.760 min
 Delta R.T.: 0.004 min
 Response: 58316168
 Conc: 47.99 ng/ml



#18 Endrin aldehyde

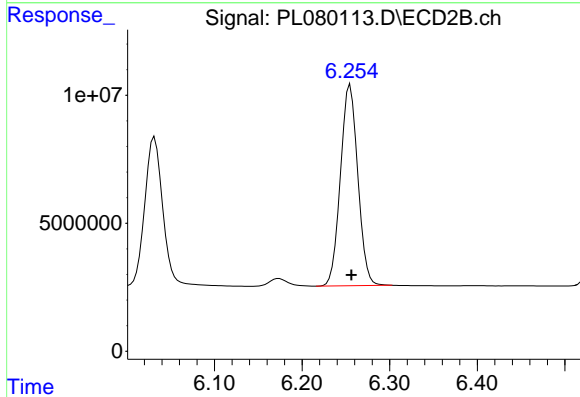
R.T.: 6.032 min
 Delta R.T.: -0.001 min
 Response: 84044390
 Conc: 47.87 ng/ml



#19 Endosulfan Sulfate

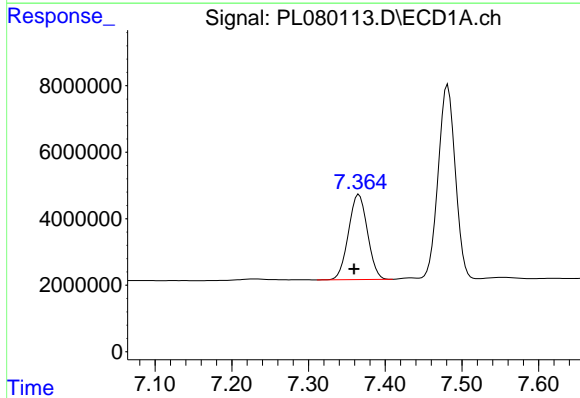
R.T.: 6.997 min
 Delta R.T.: 0.004 min
 Response: 80918797
 Conc: 49.48 ng/ml

Instrument :
 ECD_L
 ClientSampleId :
 PSTDCCC050



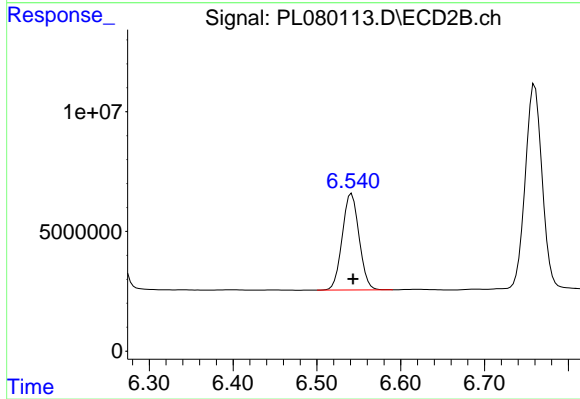
#19 Endosulfan Sulfate

R.T.: 6.255 min
 Delta R.T.: -0.001 min
 Response: 108222623
 Conc: 48.71 ng/ml



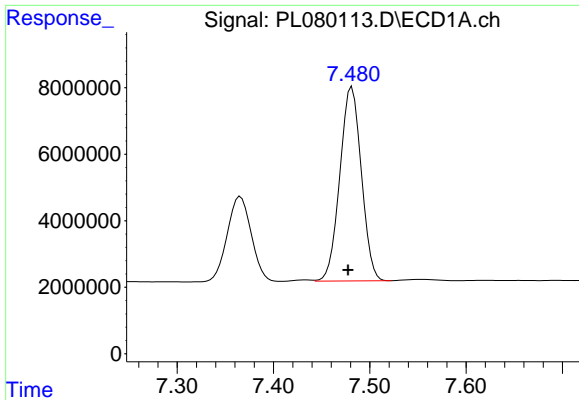
#20 Methoxychlor

R.T.: 7.366 min
 Delta R.T.: 0.006 min
 Response: 44276891
 Conc: 49.79 ng/ml



#20 Methoxychlor

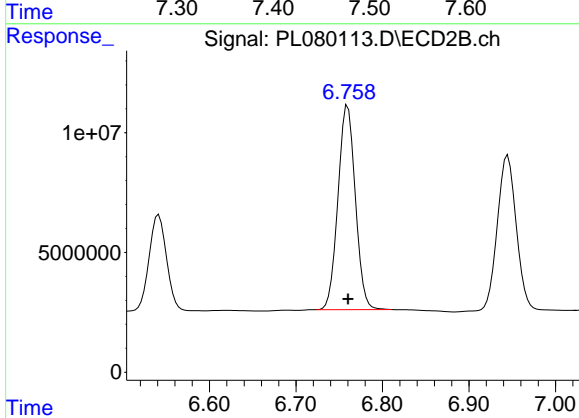
R.T.: 6.541 min
 Delta R.T.: -0.002 min
 Response: 56422034
 Conc: 49.23 ng/ml



#21 Endrin ketone

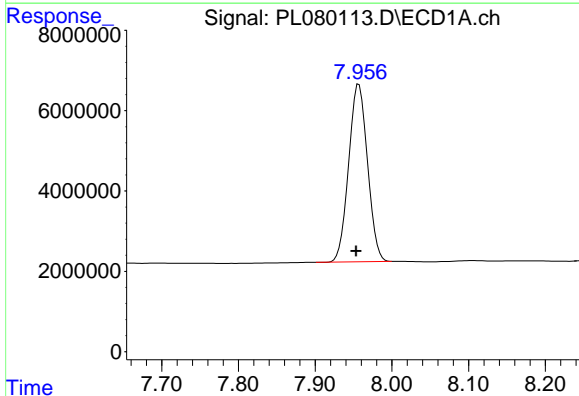
R.T.: 7.482 min
 Delta R.T.: 0.004 min
 Response: 90229901
 Conc: 50.70 ng/ml

Instrument :
 ECD_L
 ClientSampleId :
 PSTDCCC050



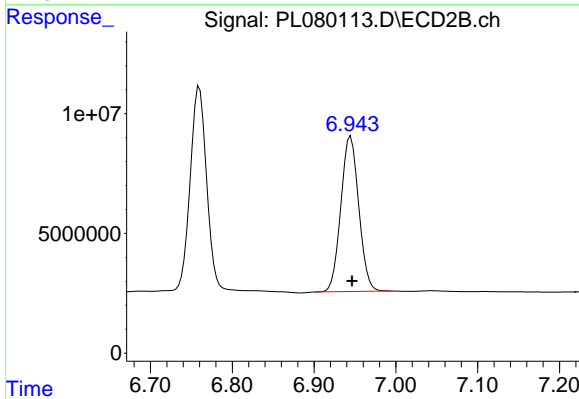
#21 Endrin ketone

R.T.: 6.760 min
 Delta R.T.: 0.000 min
 Response: 118414503
 Conc: 48.59 ng/ml



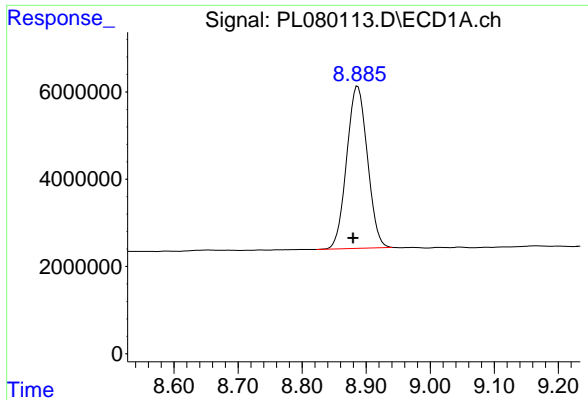
#22 Mirex

R.T.: 7.957 min
 Delta R.T.: 0.004 min
 Response: 76014576
 Conc: 49.02 ng/ml



#22 Mirex

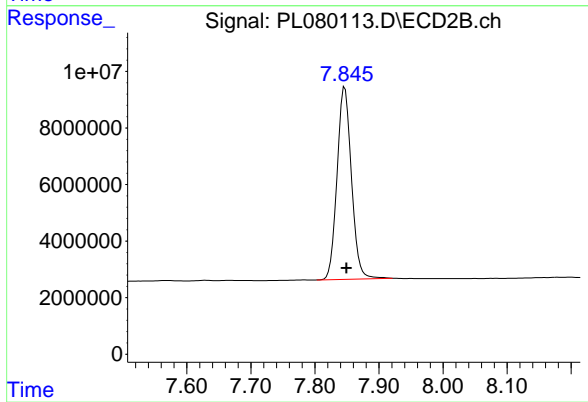
R.T.: 6.945 min
 Delta R.T.: -0.001 min
 Response: 98182338
 Conc: 47.57 ng/ml



#28 Decachlorobiphenyl

R.T.: 8.887 min
Delta R.T.: 0.007 min
Response: 83407171
Conc: 48.61 ng/ml

Instrument :
ECD_L
ClientSampleId :
PSTDCCC050



#28 Decachlorobiphenyl

R.T.: 7.847 min
Delta R.T.: -0.002 min
Response: 106198060
Conc: 47.01 ng/ml