

Data Path : Z:\pestpcbsrv\HPCHEM1\ECD\_L\Data\PL010523\  
 Data File : PL080132.D  
 Signal(s) : Signal #1: ECD1A.ch Signal #2: ECD2B.ch  
 Acq On : 05 Jan 2023 19:29  
 Operator : AR\AJ  
 Sample : PSTDCCC050  
 Misc :  
 ALS Vial : 4 Sample Multiplier: 1

Instrument :  
 ECD\_L  
 ClientSampleId :  
 PSTDCCC050

Integration File signal 1: autoint1.e  
 Integration File signal 2: autoint2.e  
 Quant Time: Jan 05 20:37:35 2023  
 Quant Method : Z:\pestpcbsrv\HPCHEM1\ECD\_L\methods\PL010423.M  
 Quant Title : GC Extractables  
 QLast Update : Thu Jan 05 05:11:24 2023  
 Response via : Initial Calibration  
 Integrator: ChemStation

Volume Inj. : 1 µl  
 Signal #1 Phase : ZB-MR2 Signal #2 Phase: ZB-MR1  
 Signal #1 Info : 30M x 0.32mm x0.2 Signal #2 Info : 30M x 0.32mm x0.5µm

Compound	RT#1	RT#2	Resp#1	Resp#2	ng/ml	ng/ml
System Monitoring Compounds						
1) SA Tetrachlo...	3.371	2.693	101.8E6	108.7E6	51.199	47.783
28) SA Decachlor...	8.882	7.846	81647526	106.0E6	47.587	46.914
Target Compounds						
2) A alpha-BHC	3.822	3.195	148.3E6	158.8E6	51.922	47.413
3) MA gamma-BHC...	4.153	3.523	107.9E6	147.8E6	54.884	48.210
4) MA Heptachlor	4.742	3.865	112.6E6	149.8E6	50.632	48.261
5) MB Aldrin	5.082	4.145	101.8E6	145.8E6	51.309	49.407
6) B beta-BHC	4.351	3.819	45414284	64655673	49.613	48.192
7) B delta-BHC	4.596	4.049	102.9E6	143.9E6	51.212	48.940
8) B Heptachlo...	5.512	4.647	94919633	130.8E6	52.166	47.761
9) A Endosulfan I	5.896	5.017	87133193	121.5E6	50.778	46.891
10) B gamma-Chl...	5.769	4.899	92776147	133.0E6	51.424	47.644
11) B alpha-Chl...	5.849	4.963	91834576	133.1E6	51.066	47.622
12) B 4,4'-DDE	6.032	5.156	80509376	114.3E6	51.145	49.252
13) MA Dieldrin	6.174	5.283	86771428	127.4E6	50.691	48.709
14) MA Endrin	6.403	5.557	76198530	109.0E6	49.686	48.423
15) B Endosulfa...	6.625	5.851	76592116	102.7E6	49.776	47.279
16) A 4,4'-DDD	6.553	5.709	70329592	92735219	53.439	50.253
17) MA 4,4'-DDT	6.870	5.961	72474682	96404515	48.479	47.345
18) B Endrin al...	6.757	6.031	59530434	81840899	48.988	46.611
19) B Endosulfa...	6.993	6.254	80194397	105.9E6	49.037	47.658
20) A Methoxychlor	7.361	6.540	42555699	54590363	47.855	47.632
21) B Endrin ke...	7.478	6.758	88343612	117.3E6	49.638	48.151
22) Mirex	7.954	6.943	74046029	97039895	47.754	47.013

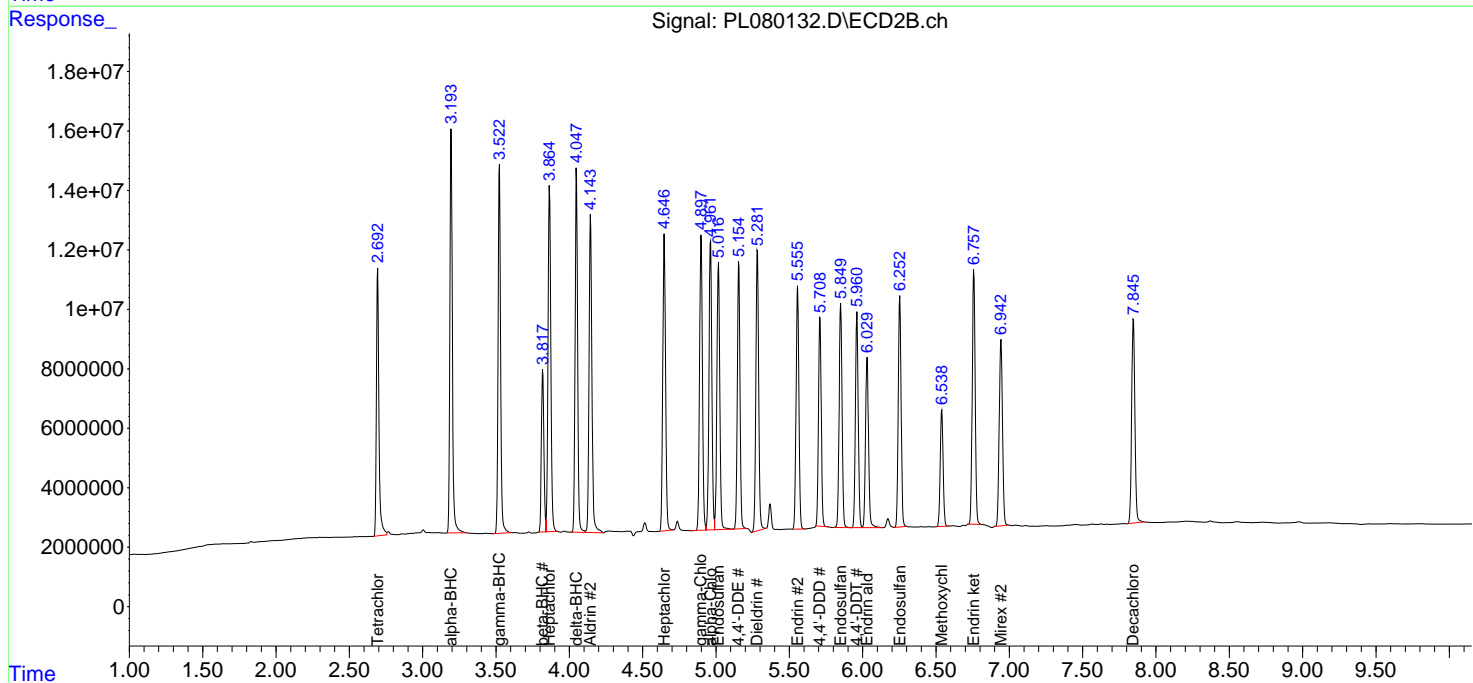
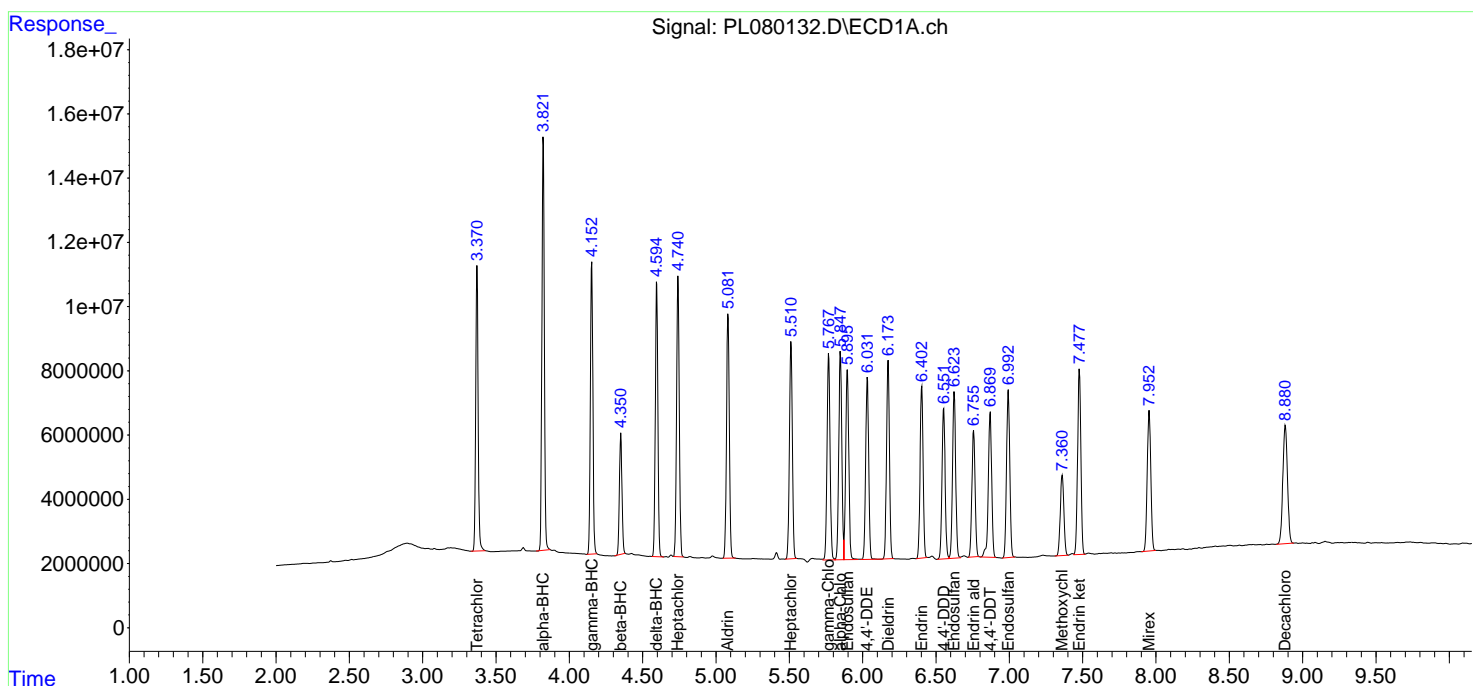
(f)=RT Delta > 1/2 Window (#)=Amounts differ by > 25% (m)=manual int.

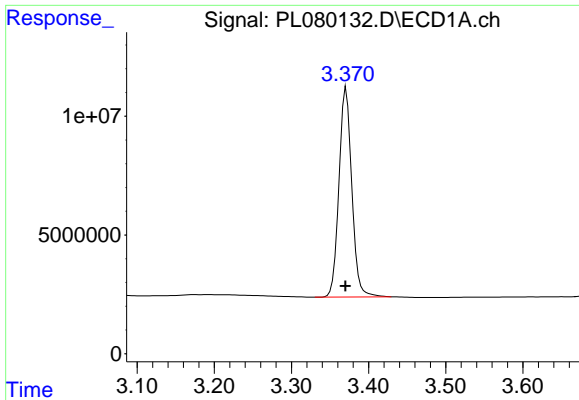
Data Path : Z:\pestpcbsrv\HPCHEM1\ECD\_L\Data\PL010523\  
 Data File : PL080132.D  
 Signal(s) : Signal #1: ECD1A.ch Signal #2: ECD2B.ch  
 Acq On : 05 Jan 2023 19:29  
 Operator : AR\AJ  
 Sample : PSTDCCC050  
 Misc :  
 ALS Vial : 4 Sample Multiplier: 1

Instrument :  
 ECD\_L  
 ClientSampleId :  
 PSTDCCC050

Integration File signal 1: autoint1.e  
 Integration File signal 2: autoint2.e  
 Quant Time: Jan 05 20:37:35 2023  
 Quant Method : Z:\pestpcbsrv\HPCHEM1\ECD\_L\methods\PL010423.M  
 Quant Title : GC Extractables  
 QLast Update : Thu Jan 05 05:11:24 2023  
 Response via : Initial Calibration  
 Integrator: ChemStation

Volume Inj. : 1 µl  
 Signal #1 Phase : ZB-MR2 Signal #2 Phase: ZB-MR1  
 Signal #1 Info : 30M x 0.32mm x0.2 Signal #2 Info : 30M x 0.32mm x0.5µm

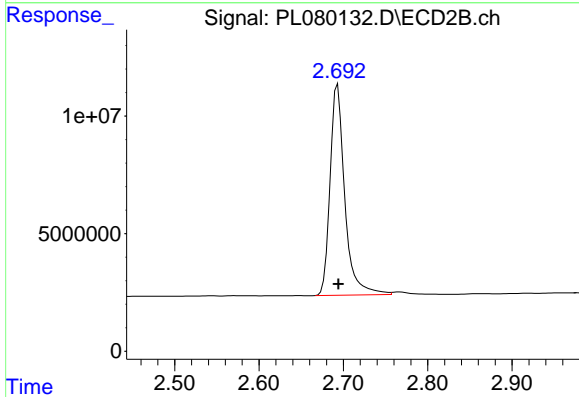




#1 Tetrachloro-m-xylene

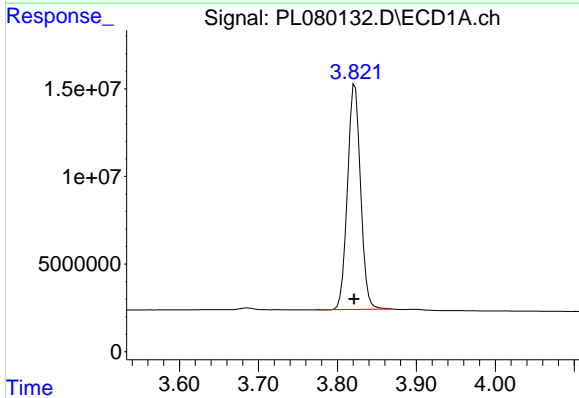
R.T.: 3.371 min  
 Delta R.T.: 0.001 min  
 Response: 101843503  
 Conc: 51.20 ng/ml

Instrument :  
 ECD\_L  
 ClientSampleId :  
 PSTDCCC050



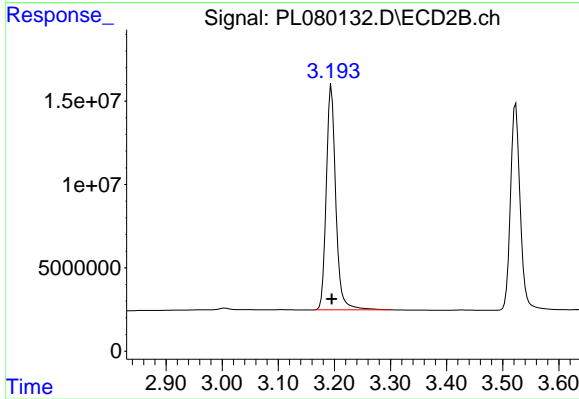
#1 Tetrachloro-m-xylene

R.T.: 2.693 min  
 Delta R.T.: 0.000 min  
 Response: 108650281  
 Conc: 47.78 ng/ml



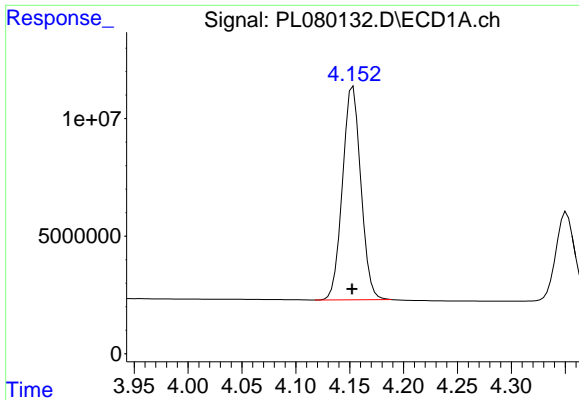
#2 alpha-BHC

R.T.: 3.822 min  
 Delta R.T.: 0.001 min  
 Response: 148345701  
 Conc: 51.92 ng/ml



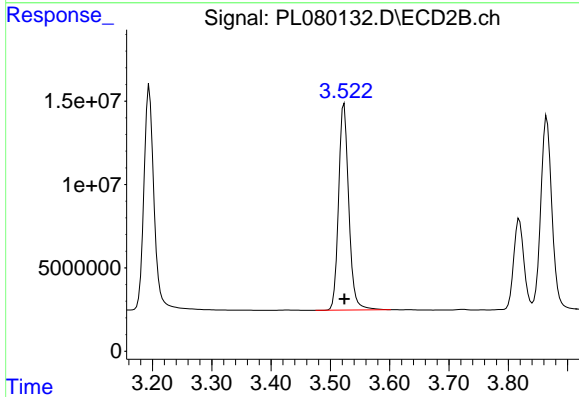
#2 alpha-BHC

R.T.: 3.195 min  
 Delta R.T.: 0.000 min  
 Response: 158797873  
 Conc: 47.41 ng/ml

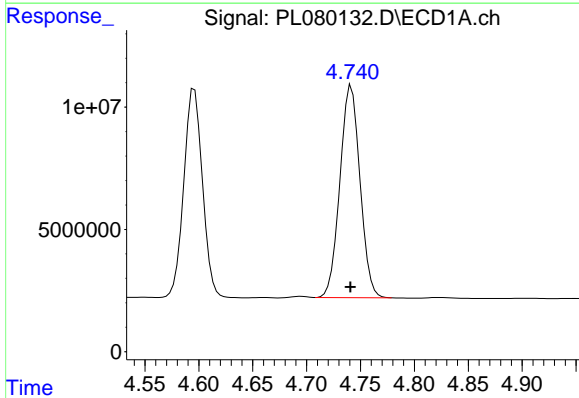


#3 gamma-BHC (Lindane)  
 R.T.: 4.153 min  
 Delta R.T.: 0.000 min  
 Response: 107865441  
 Conc: 54.88 ng/ml

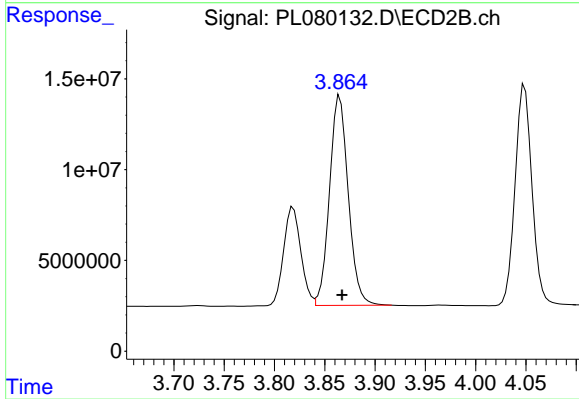
Instrument :  
 ECD\_L  
 ClientSampleId :  
 PSTDCCC050



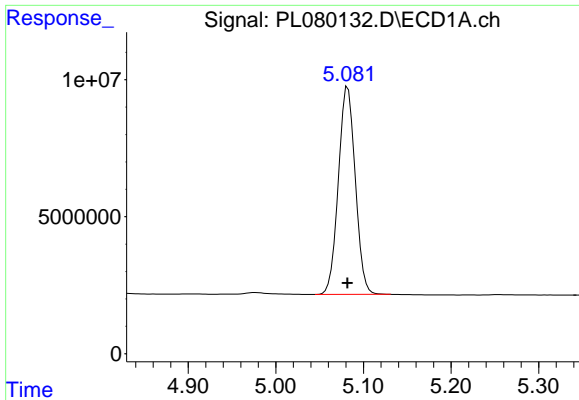
#3 gamma-BHC (Lindane)  
 R.T.: 3.523 min  
 Delta R.T.: 0.000 min  
 Response: 147844887  
 Conc: 48.21 ng/ml



#4 Heptachlor  
 R.T.: 4.742 min  
 Delta R.T.: 0.000 min  
 Response: 112588836  
 Conc: 50.63 ng/ml



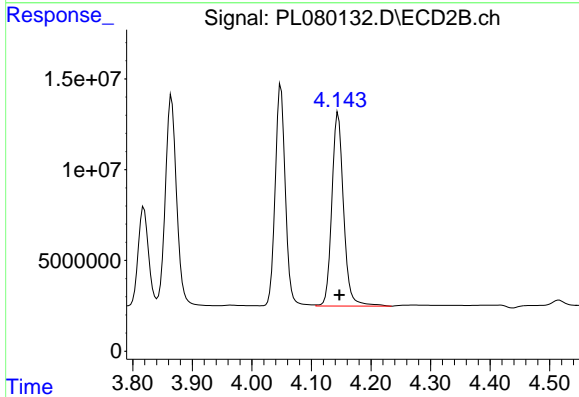
#4 Heptachlor  
 R.T.: 3.865 min  
 Delta R.T.: -0.002 min  
 Response: 149818867  
 Conc: 48.26 ng/ml



#5 Aldrin

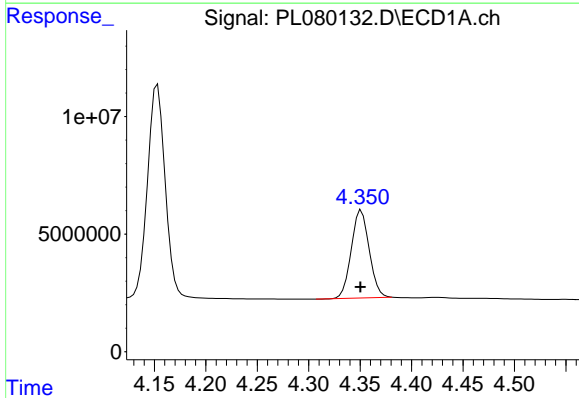
R.T.: 5.082 min  
 Delta R.T.: 0.000 min  
 Response: 101813663  
 Conc: 51.31 ng/ml

Instrument :  
 ECD\_L  
 ClientSampleId :  
 PSTDCCC050



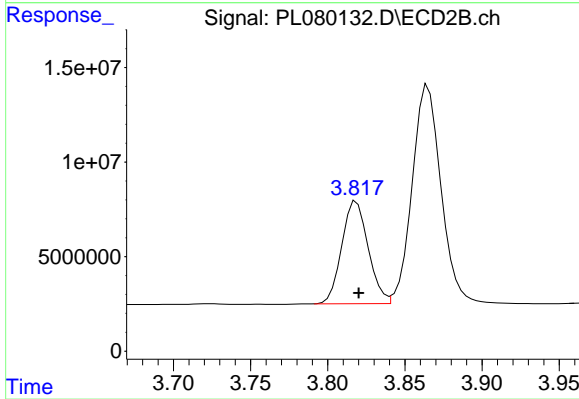
#5 Aldrin

R.T.: 4.145 min  
 Delta R.T.: -0.002 min  
 Response: 145798357  
 Conc: 49.41 ng/ml



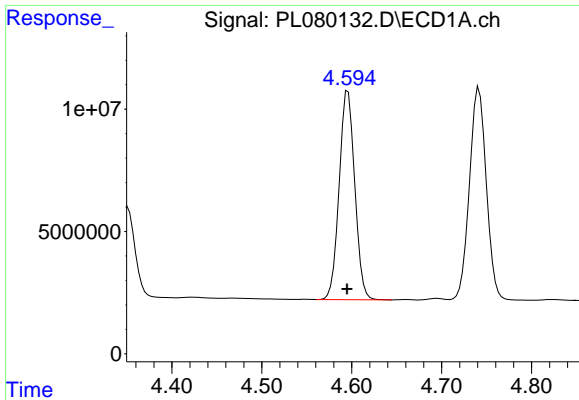
#6 beta-BHC

R.T.: 4.351 min  
 Delta R.T.: 0.000 min  
 Response: 45414284  
 Conc: 49.61 ng/ml



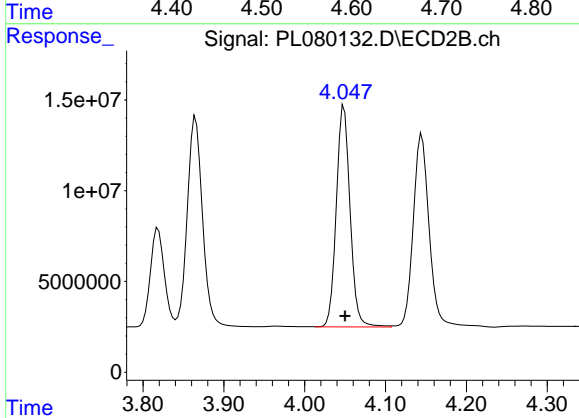
#6 beta-BHC

R.T.: 3.819 min  
 Delta R.T.: -0.001 min  
 Response: 64655673  
 Conc: 48.19 ng/ml

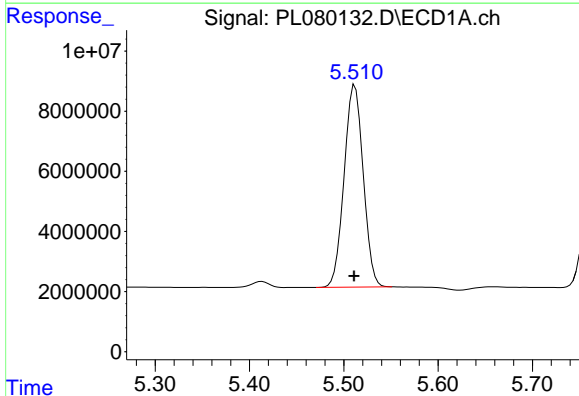


#7 delta-BHC  
 R.T.: 4.596 min  
 Delta R.T.: 0.001 min  
 Response: 102864107  
 Conc: 51.21 ng/ml

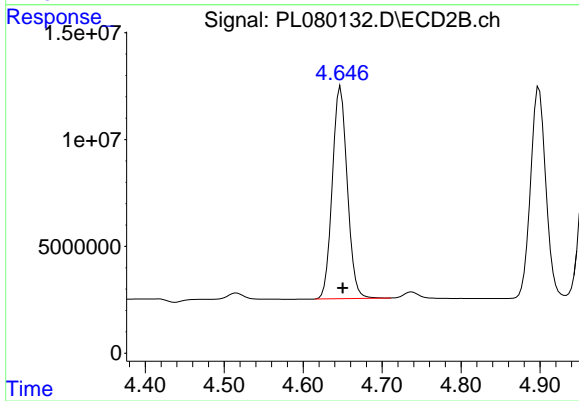
Instrument :  
 ECD\_L  
 ClientSampleId :  
 PSTDCCC050



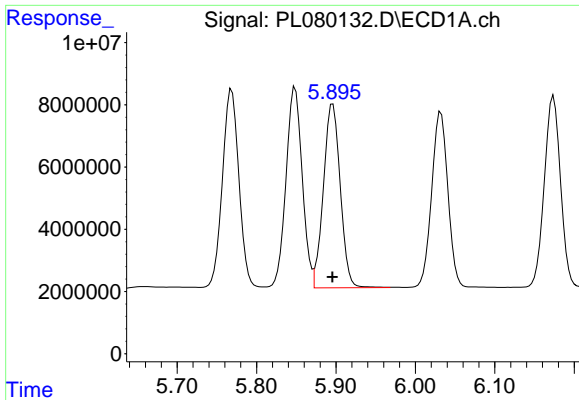
#7 delta-BHC  
 R.T.: 4.049 min  
 Delta R.T.: -0.001 min  
 Response: 143888193  
 Conc: 48.94 ng/ml



#8 Heptachlor epoxide  
 R.T.: 5.512 min  
 Delta R.T.: 0.001 min  
 Response: 94919633  
 Conc: 52.17 ng/ml



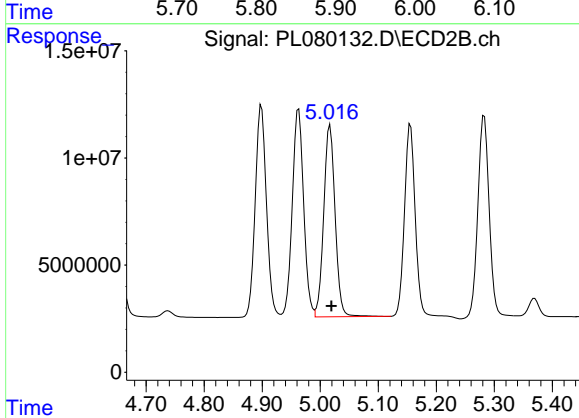
#8 Heptachlor epoxide  
 R.T.: 4.647 min  
 Delta R.T.: -0.002 min  
 Response: 130843905  
 Conc: 47.76 ng/ml



#9 Endosulfan I

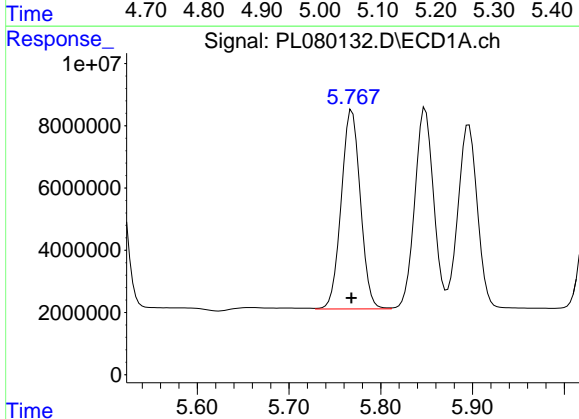
R.T.: 5.896 min  
 Delta R.T.: 0.000 min  
 Response: 87133193  
 Conc: 50.78 ng/ml

Instrument :  
 ECD\_L  
 ClientSampleId :  
 PSTDCCC050



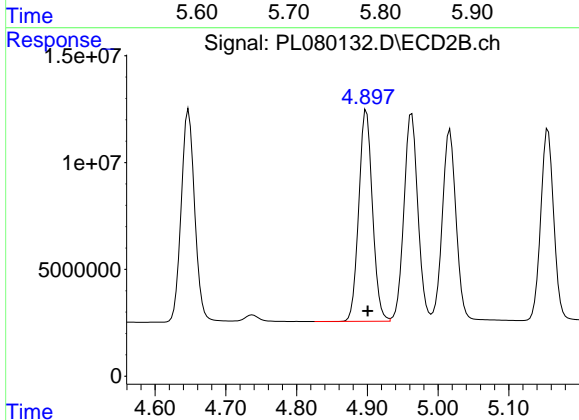
#9 Endosulfan I

R.T.: 5.017 min  
 Delta R.T.: -0.002 min  
 Response: 121452494  
 Conc: 46.89 ng/ml



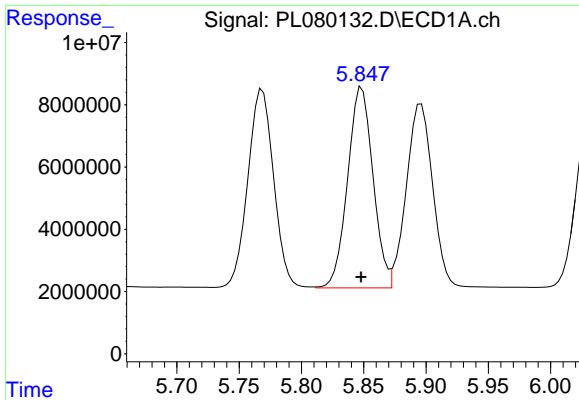
#10 gamma-Chlordane

R.T.: 5.769 min  
 Delta R.T.: 0.000 min  
 Response: 92776147  
 Conc: 51.42 ng/ml



#10 gamma-Chlordane

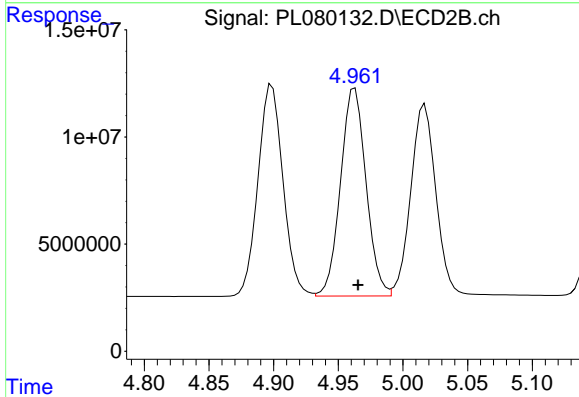
R.T.: 4.899 min  
 Delta R.T.: -0.002 min  
 Response: 132977199  
 Conc: 47.64 ng/ml



#11 alpha-Chlordane

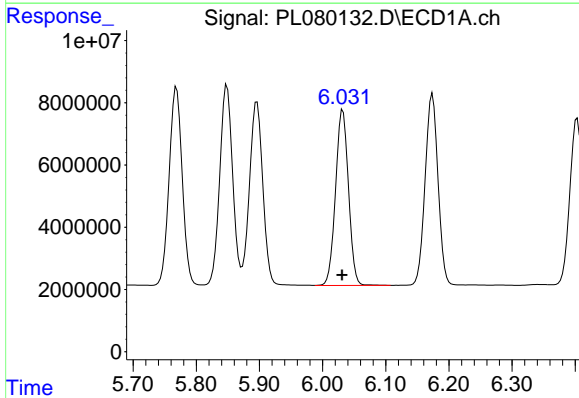
R.T.: 5.849 min  
 Delta R.T.: 0.000 min  
 Response: 91834576  
 Conc: 51.07 ng/ml

Instrument :  
 ECD\_L  
 ClientSampleId :  
 PSTDCCC050



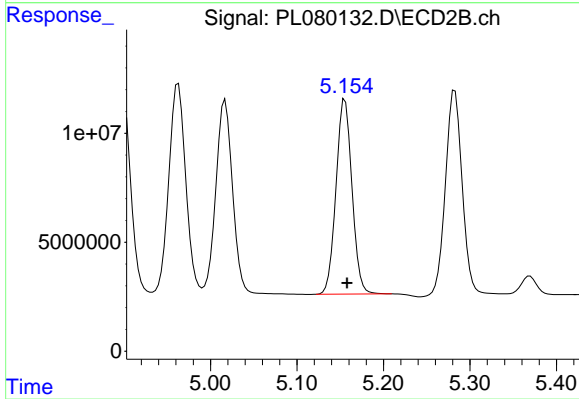
#11 alpha-Chlordane

R.T.: 4.963 min  
 Delta R.T.: -0.002 min  
 Response: 133050977  
 Conc: 47.62 ng/ml



#12 4,4'-DDE

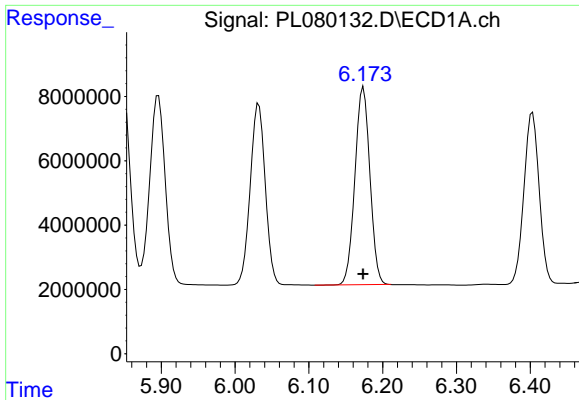
R.T.: 6.032 min  
 Delta R.T.: 0.001 min  
 Response: 80509376  
 Conc: 51.14 ng/ml



#12 4,4'-DDE

R.T.: 5.156 min  
 Delta R.T.: -0.002 min  
 Response: 114278526  
 Conc: 49.25 ng/ml

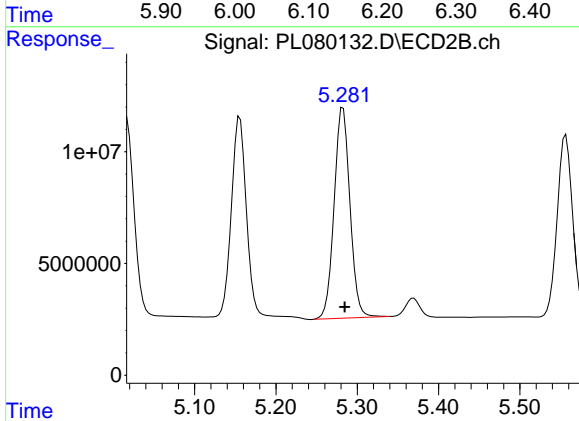




#13 Dieldrin

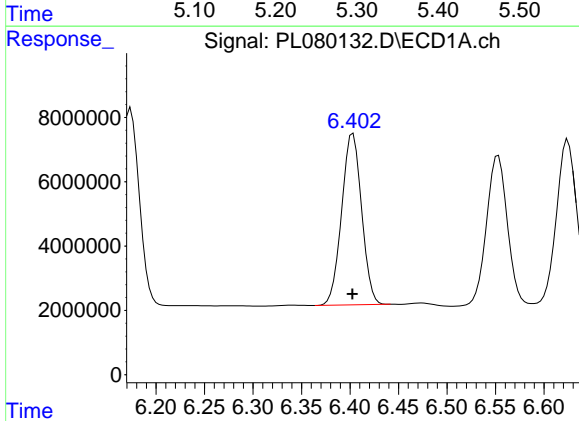
R.T.: 6.174 min  
 Delta R.T.: 0.000 min  
 Response: 86771428  
 Conc: 50.69 ng/ml

Instrument :  
 ECD\_L  
 ClientSampleId :  
 PSTDCCC050



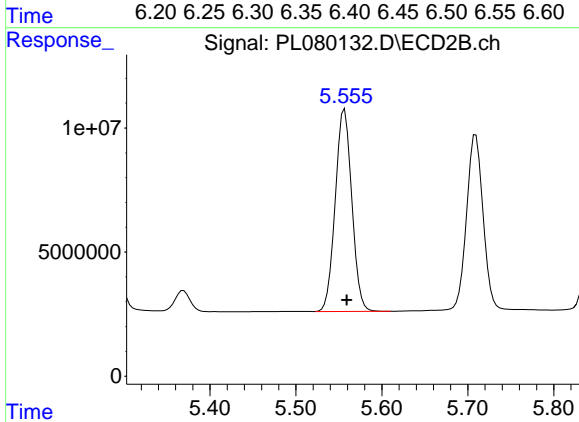
#13 Dieldrin

R.T.: 5.283 min  
 Delta R.T.: -0.002 min  
 Response: 127401522  
 Conc: 48.71 ng/ml



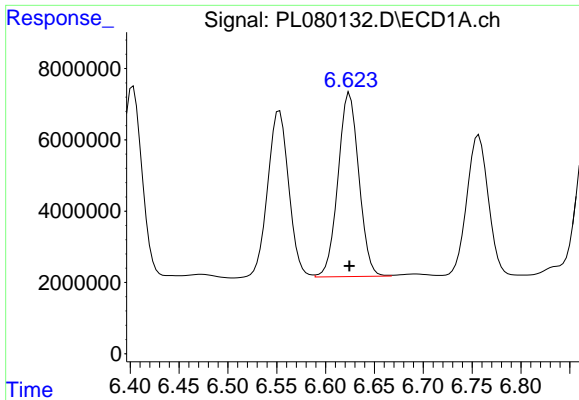
#14 Endrin

R.T.: 6.403 min  
 Delta R.T.: 0.000 min  
 Response: 76198530  
 Conc: 49.69 ng/ml



#14 Endrin

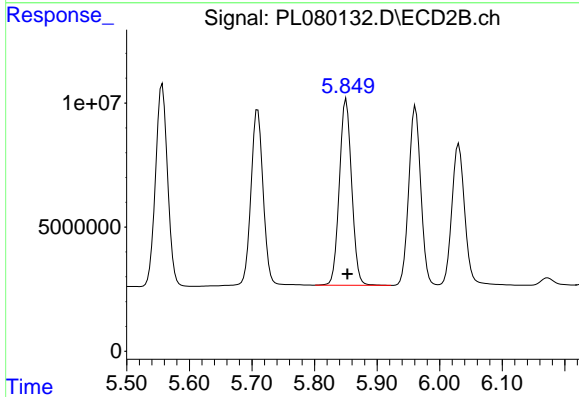
R.T.: 5.557 min  
 Delta R.T.: -0.002 min  
 Response: 108975808  
 Conc: 48.42 ng/ml



#15 Endosulfan II

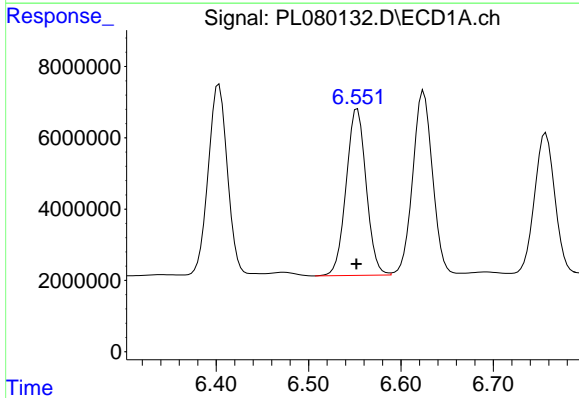
R.T.: 6.625 min  
 Delta R.T.: 0.000 min  
 Response: 76592116  
 Conc: 49.78 ng/ml

Instrument :  
 ECD\_L  
 ClientSampleId :  
 PSTDCCC050



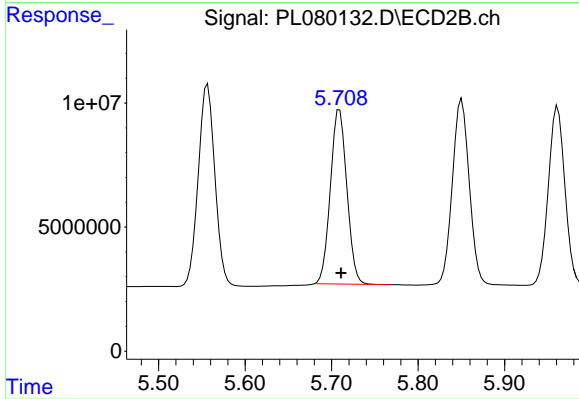
#15 Endosulfan II

R.T.: 5.851 min  
 Delta R.T.: -0.002 min  
 Response: 102650024  
 Conc: 47.28 ng/ml



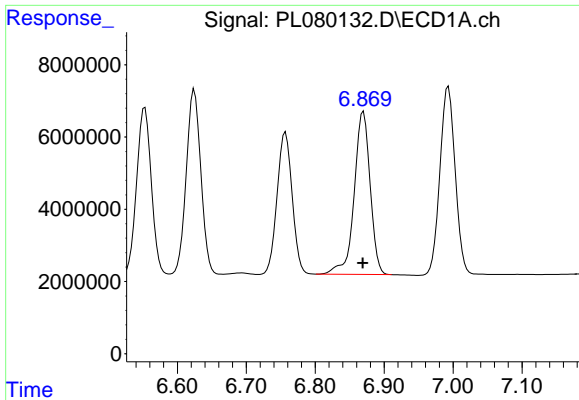
#16 4,4'-DDD

R.T.: 6.553 min  
 Delta R.T.: 0.000 min  
 Response: 70329592  
 Conc: 53.44 ng/ml



#16 4,4'-DDD

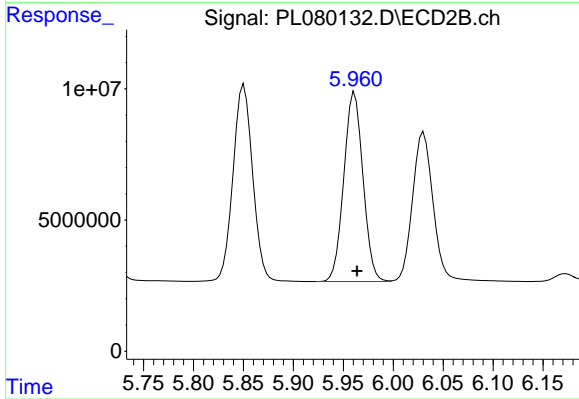
R.T.: 5.709 min  
 Delta R.T.: -0.002 min  
 Response: 92735219  
 Conc: 50.25 ng/ml



#17 4,4'-DDT

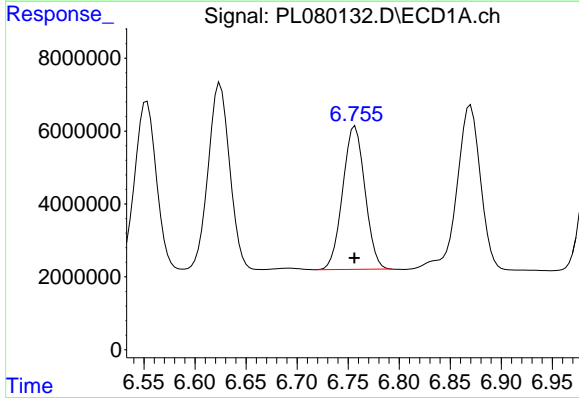
R.T.: 6.870 min  
 Delta R.T.: 0.001 min  
 Response: 72474682  
 Conc: 48.48 ng/ml

Instrument :  
 ECD\_L  
 ClientSampleId :  
 PSTDCCC050



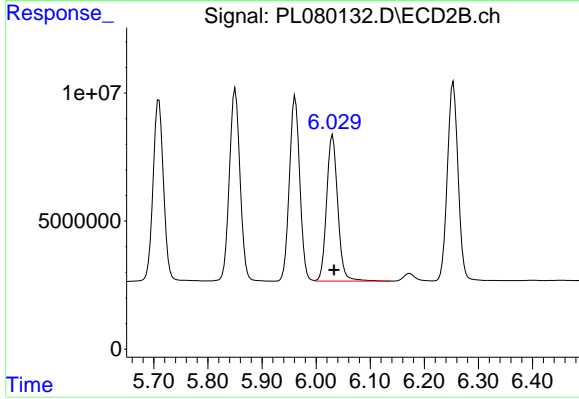
#17 4,4'-DDT

R.T.: 5.961 min  
 Delta R.T.: -0.003 min  
 Response: 96404515  
 Conc: 47.35 ng/ml



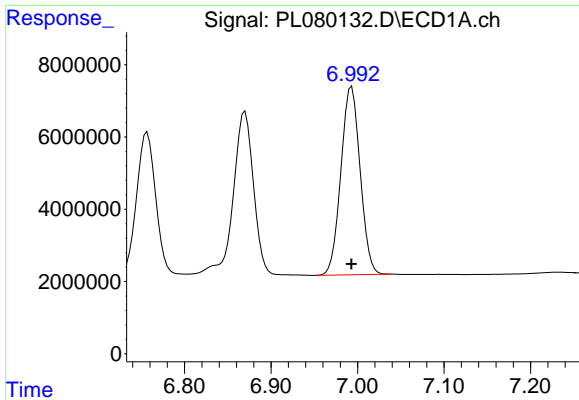
#18 Endrin aldehyde

R.T.: 6.757 min  
 Delta R.T.: 0.000 min  
 Response: 59530434  
 Conc: 48.99 ng/ml



#18 Endrin aldehyde

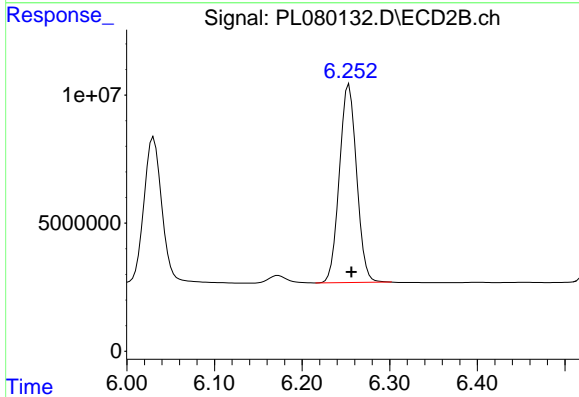
R.T.: 6.031 min  
 Delta R.T.: -0.002 min  
 Response: 81840899  
 Conc: 46.61 ng/ml



#19 Endosulfan Sulfate

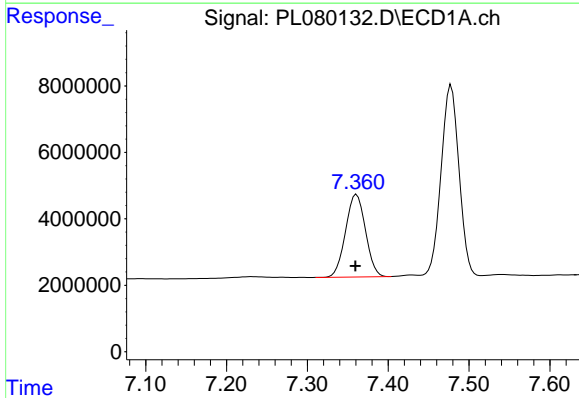
R.T.: 6.993 min  
 Delta R.T.: 0.000 min  
 Response: 80194397  
 Conc: 49.04 ng/ml

Instrument :  
 ECD\_L  
 ClientSampleId :  
 PSTDCCC050



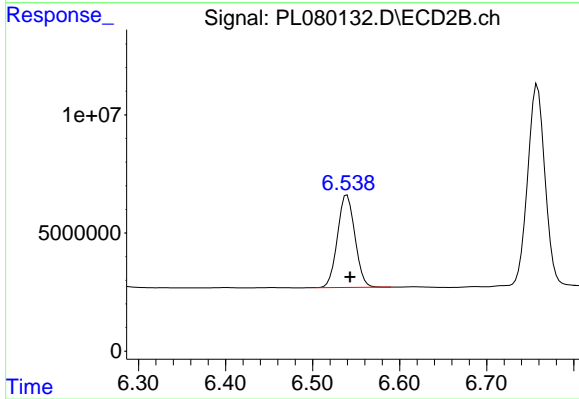
#19 Endosulfan Sulfate

R.T.: 6.254 min  
 Delta R.T.: -0.003 min  
 Response: 105883839  
 Conc: 47.66 ng/ml



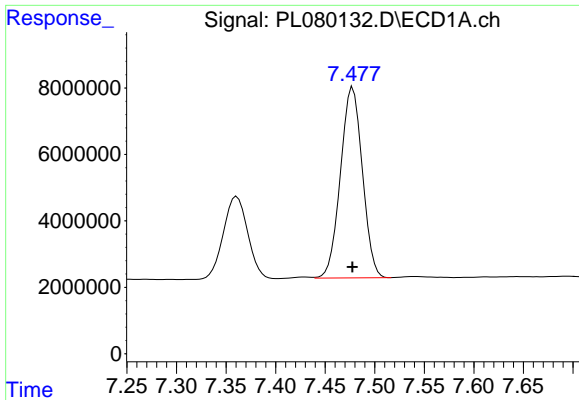
#20 Methoxychlor

R.T.: 7.361 min  
 Delta R.T.: 0.001 min  
 Response: 42555699  
 Conc: 47.86 ng/ml



#20 Methoxychlor

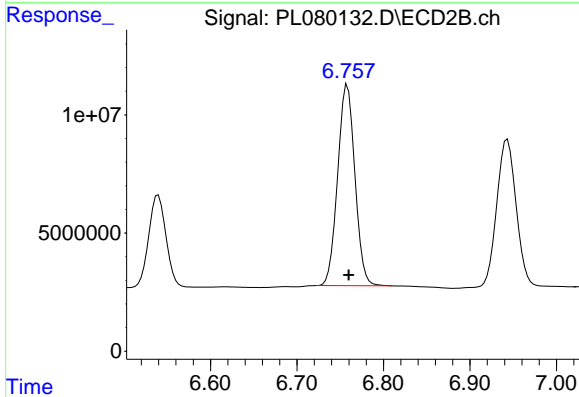
R.T.: 6.540 min  
 Delta R.T.: -0.003 min  
 Response: 54590363  
 Conc: 47.63 ng/ml



#21 Endrin ketone

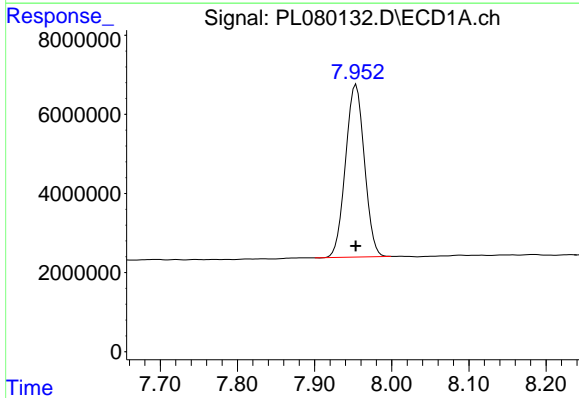
R.T.: 7.478 min  
 Delta R.T.: 0.000 min  
 Response: 88343612  
 Conc: 49.64 ng/ml

Instrument :  
 ECD\_L  
 ClientSampleId :  
 PSTDCCC050



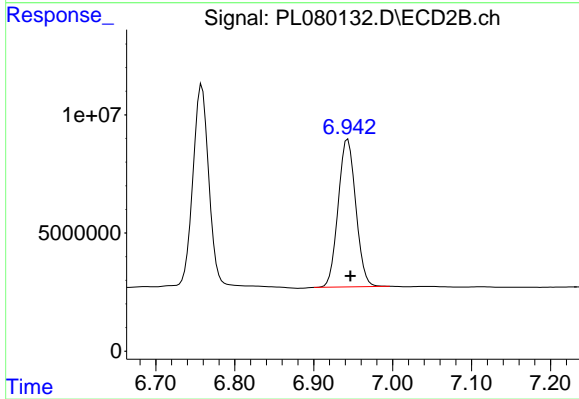
#21 Endrin ketone

R.T.: 6.758 min  
 Delta R.T.: -0.002 min  
 Response: 117346327  
 Conc: 48.15 ng/ml



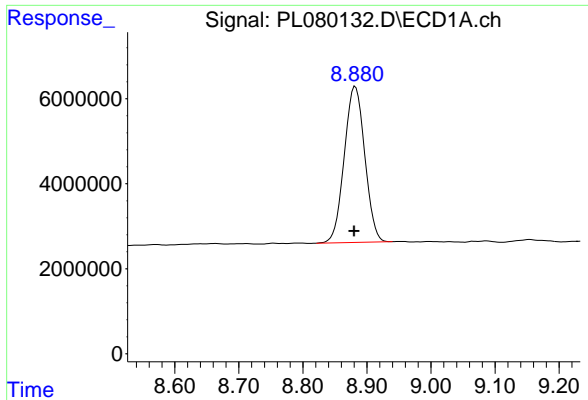
#22 Mirex

R.T.: 7.954 min  
 Delta R.T.: 0.000 min  
 Response: 74046029  
 Conc: 47.75 ng/ml



#22 Mirex

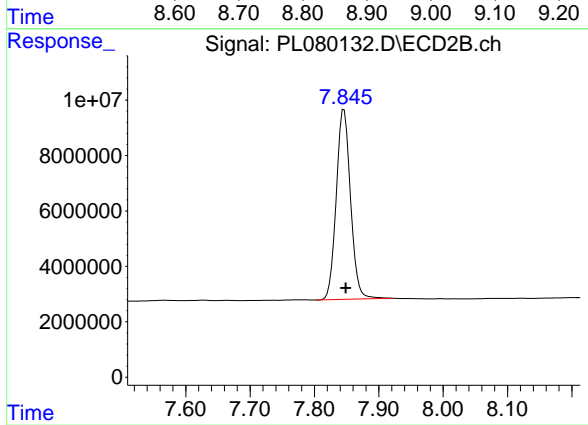
R.T.: 6.943 min  
 Delta R.T.: -0.003 min  
 Response: 97039895  
 Conc: 47.01 ng/ml



#28 Decachlorobiphenyl

R.T.: 8.882 min  
Delta R.T.: 0.002 min  
Response: 81647526  
Conc: 47.59 ng/ml

Instrument :  
ECD\_L  
ClientSampleId :  
PSTDCCC050



#28 Decachlorobiphenyl

R.T.: 7.846 min  
Delta R.T.: -0.003 min  
Response: 105992044  
Conc: 46.91 ng/ml