

Data Path : Z:\pestpcbsrv\HPCHEM1\ECD_L\Data\PL010721\
 Data File : PL063963.D
 Signal(s) : Signal #1: ECD1A.ch Signal #2: ECD2B.ch
 Acq On : 07 Jan 2021 11:53
 Operator : AR\AJ
 Sample : INDB201
 Misc :
 ALS Vial : 12 Sample Multiplier: 1

Instrument :
 ECD_L
 ClientSampleId :

Integration File signal 1: autoint1.e
 Integration File signal 2: autoint2.e
 Quant Time: Jan 08 05:33:45 2021
 Quant Method : Z:\pestpcbsrv\HPCHEM1\ECD_L\methods\PL010721CLP.M
 Quant Title : GC Extractables
 QLast Update : Fri Jan 08 05:32:50 2021
 Response via : Initial Calibration
 Integrator: ChemStation

Volume Inj. : 1 µl
 Signal #1 Phase : ZB-MR2 Signal #2 Phase: ZB-MR1
 Signal #1 Info : 30M x 0.32mm x0.2 Signal #2 Info : 30M x 0.32mm x 0.50µm

Compound	RT#1	RT#2	Resp#1	Resp#2	ng/ml	ng/ml

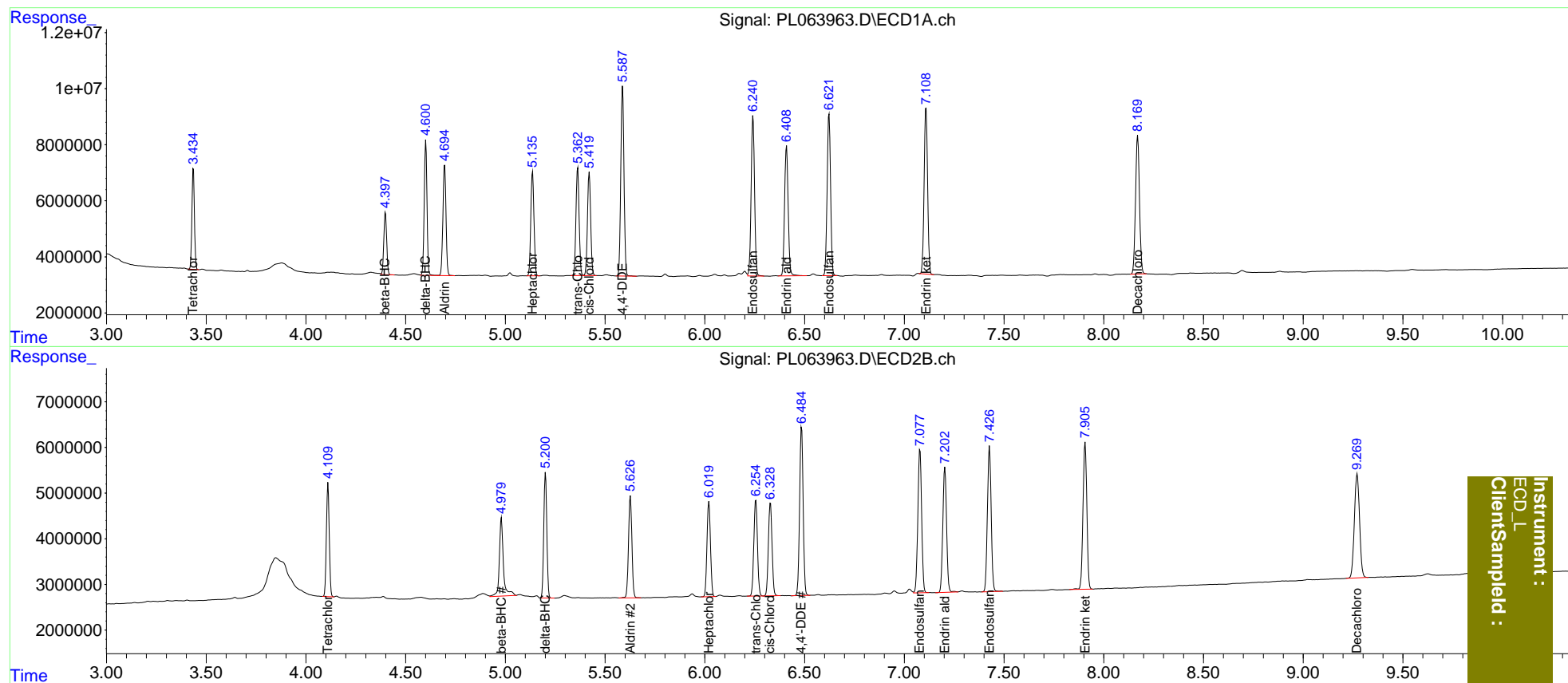
System Monitoring Compounds						
1) SA Tetrachlo...	3.436	4.111	32066527	24652817	10.387	10.478
27) SA Decachlor...	8.170	9.271	67350835	40976636	21.849	21.897
Target Compounds						
5) MB Aldrin	4.696	5.627	42377088	26620662	10.327	10.420
6) B beta-BHC	4.399	4.980	22198410	24013953	10.601	14.752 #
7) B delta-BHC	4.601	5.201	46521573	29031130	10.223	10.135
8) B Heptachlo...	5.136	6.021	40853927	25327701	10.517	10.454
10) B trans-Chl...	5.363	6.256	42274189	26452905	10.559	10.541
11) B cis-Chlor...	5.421	6.329	41216842	25959530	10.577	10.533
12) B 4,4'-DDE	5.588	6.485	75133258	45561345	20.404	20.377
15) B Endosulfa...	6.242	7.079	68114221	41182582	21.162	21.283
18) B Endrin al...	6.410	7.204	58025682	35711363	21.194	21.494
19) B Endosulfa...	6.623	7.427	68813958	41354573	21.050	21.472
21) B Endrin ke...	7.109	7.907	72188637	42932993	20.862	21.240

(f)=RT Delta > 1/2 Window (#)=Amounts differ by > 25% (m)=manual int.

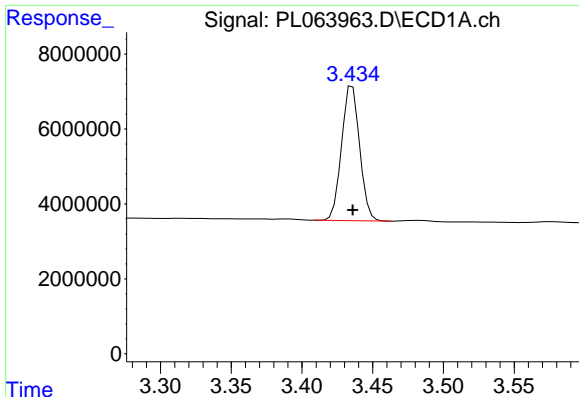
Data Path : Z:\pestpcbsrv\HPCHEM1\ECD_L\Data\PL010721\
 Data File : PL063963.D
 Signal(s) : Signal #1: ECD1A.ch Signal #2: ECD2B.ch
 Acq On : 07 Jan 2021 11:53
 Operator : AR\AJ
 Sample : INDB201
 Misc :
 ALS Vial : 12 Sample Multiplier: 1

Integration File signal 1: autoint1.e
 Integration File signal 2: autoint2.e
 Quant Time: Jan 08 05:33:45 2021
 Quant Method : Z:\pestpcbsrv\HPCHEM1\ECD_L\methods\PL010721CLP.M
 Quant Title : GC Extractables
 QLast Update : Fri Jan 08 05:32:50 2021
 Response via : Initial Calibration
 Integrator: ChemStation

Volume Inj. : 1 µl
 Signal #1 Phase : ZB-MR2 Signal #2 Phase: ZB-MR1
 Signal #1 Info : 30M x 0.32mm x0.2 Signal #2 Info : 30M x 0.32mm x 0.50µm



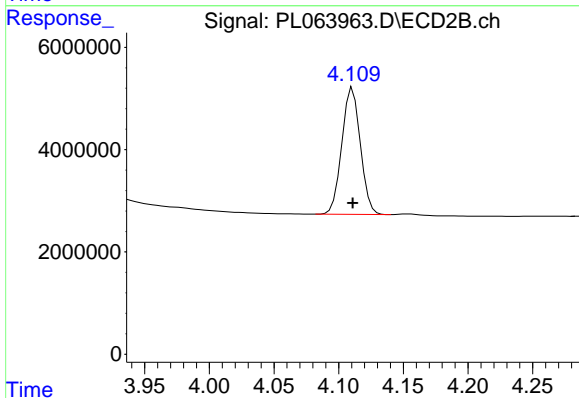
Instrument :
 ECD_L
 ClientSampleId :



#1 Tetrachloro-m-xylene

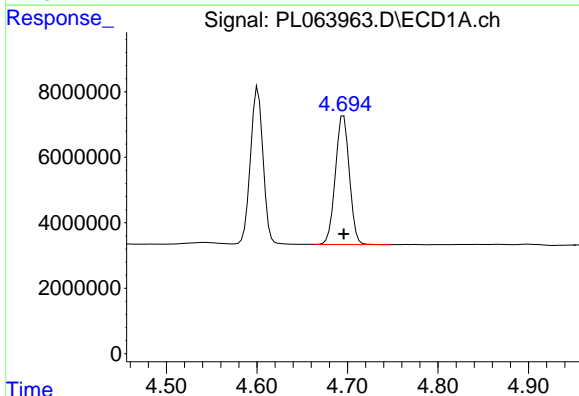
R.T.: 3.436 min
Delta R.T.: 0.000 min
Response: 32066527
Conc: 10.39 ng/ml

Instrument :
ECD_L
ClientSampleId :



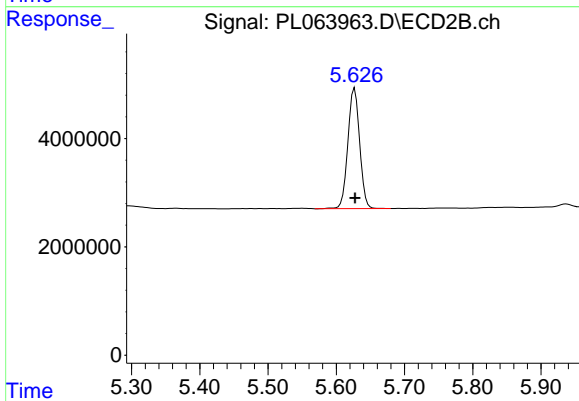
#1 Tetrachloro-m-xylene

R.T.: 4.111 min
Delta R.T.: 0.000 min
Response: 24652817
Conc: 10.48 ng/ml



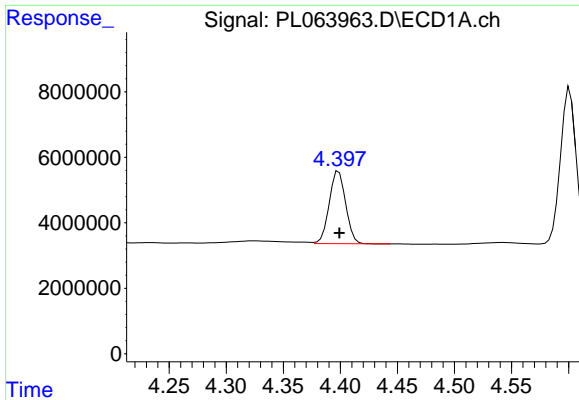
#5 Aldrin

R.T.: 4.696 min
Delta R.T.: 0.000 min
Response: 42377088
Conc: 10.33 ng/ml



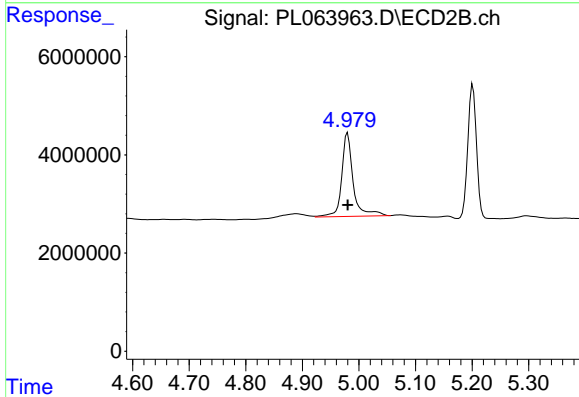
#5 Aldrin

R.T.: 5.627 min
Delta R.T.: 0.000 min
Response: 26620662
Conc: 10.42 ng/ml

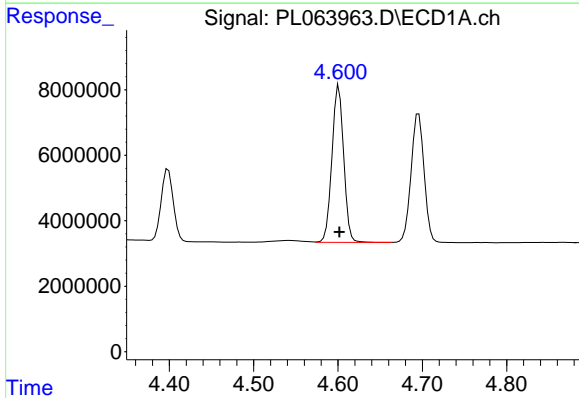


#6 beta-BHC
 R.T.: 4.399 min
 Delta R.T.: 0.000 min
 Response: 22198410
 Conc: 10.60 ng/ml

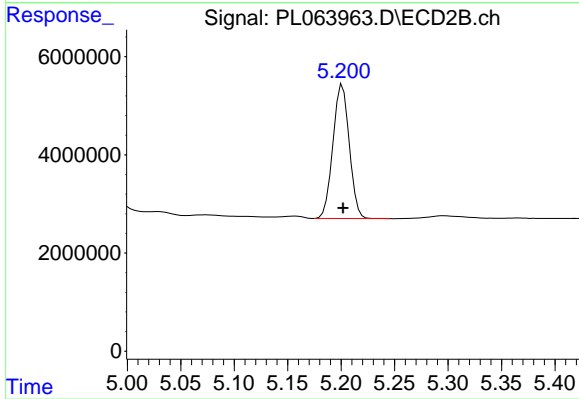
Instrument :
 ECD_L
 ClientSampled :



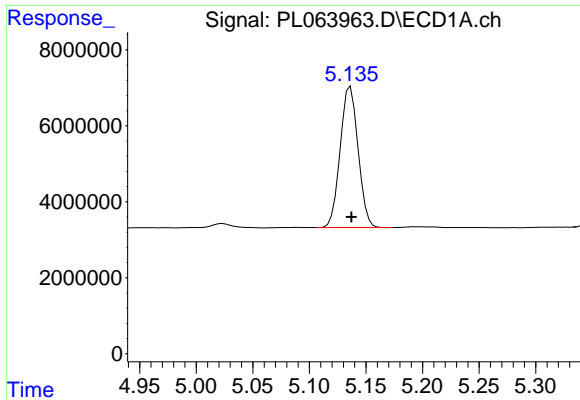
#6 beta-BHC
 R.T.: 4.980 min
 Delta R.T.: 0.000 min
 Response: 24013953
 Conc: 14.75 ng/ml



#7 delta-BHC
 R.T.: 4.601 min
 Delta R.T.: 0.000 min
 Response: 46521573
 Conc: 10.22 ng/ml



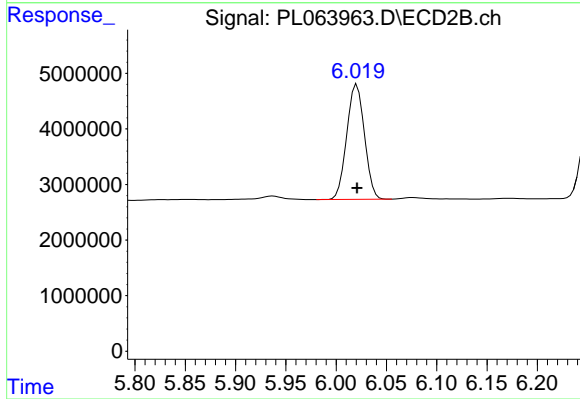
#7 delta-BHC
 R.T.: 5.201 min
 Delta R.T.: 0.000 min
 Response: 29031130
 Conc: 10.14 ng/ml



#8 Heptachlor epoxide

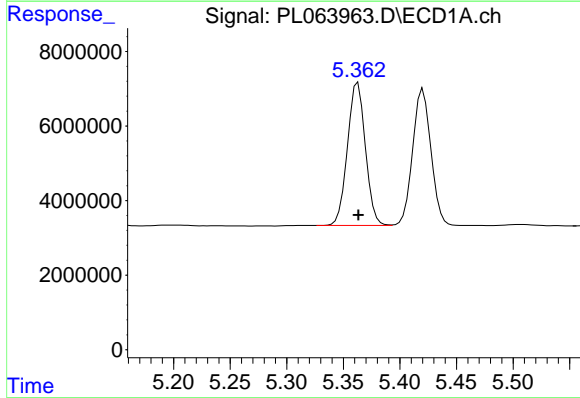
R.T.: 5.136 min
 Delta R.T.: 0.000 min
 Response: 40853927
 Conc: 10.52 ng/ml

Instrument :
 ECD_L
 ClientSampleId :



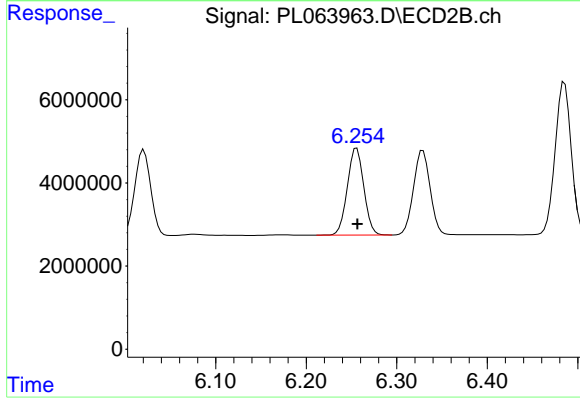
#8 Heptachlor epoxide

R.T.: 6.021 min
 Delta R.T.: 0.000 min
 Response: 25327701
 Conc: 10.45 ng/ml



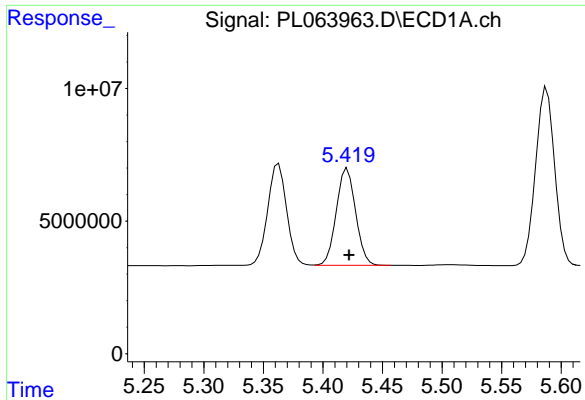
#10 trans-Chlordane

R.T.: 5.363 min
 Delta R.T.: 0.000 min
 Response: 42274189
 Conc: 10.56 ng/ml



#10 trans-Chlordane

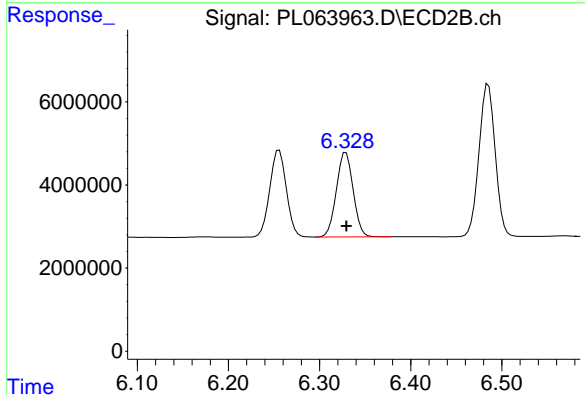
R.T.: 6.256 min
 Delta R.T.: 0.000 min
 Response: 26452905
 Conc: 10.54 ng/ml



#11 cis-Chlordane

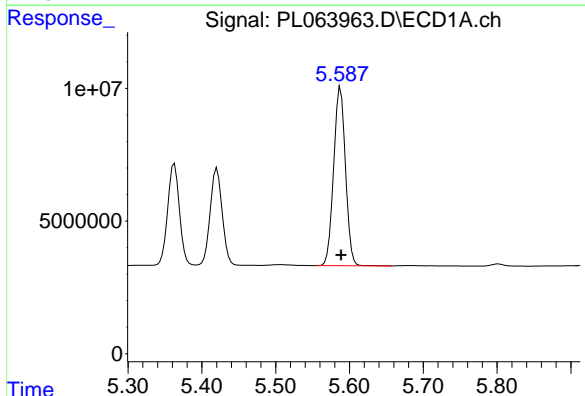
R.T.: 5.421 min
 Delta R.T.: -0.001 min
 Response: 41216842
 Conc: 10.58 ng/ml

Instrument :
 ECD_L
 ClientSampled :



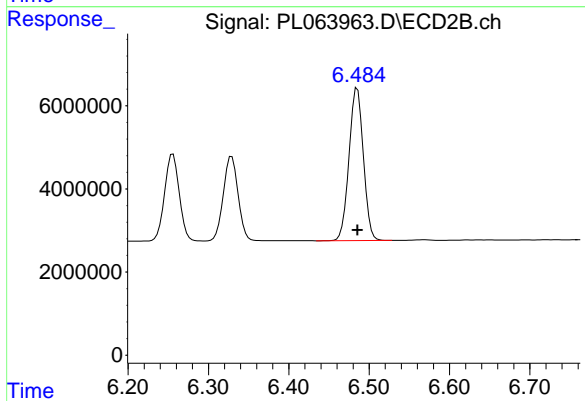
#11 cis-Chlordane

R.T.: 6.329 min
 Delta R.T.: 0.000 min
 Response: 25959530
 Conc: 10.53 ng/ml



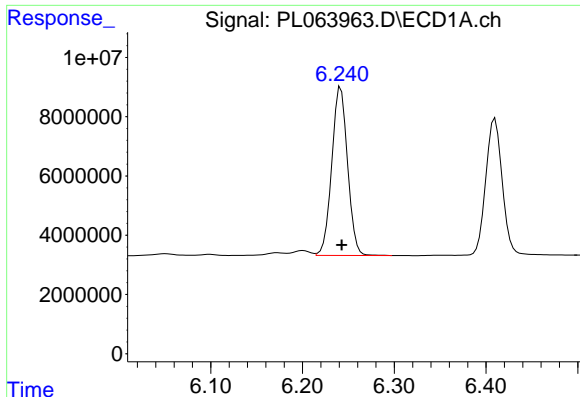
#12 4,4'-DDE

R.T.: 5.588 min
 Delta R.T.: 0.000 min
 Response: 75133258
 Conc: 20.40 ng/ml



#12 4,4'-DDE

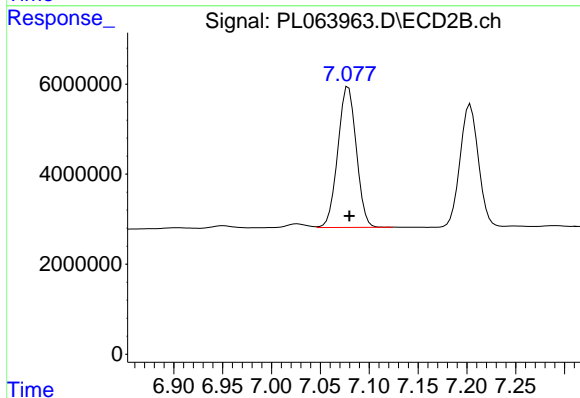
R.T.: 6.485 min
 Delta R.T.: 0.000 min
 Response: 45561345
 Conc: 20.38 ng/ml



#15 Endosulfan II

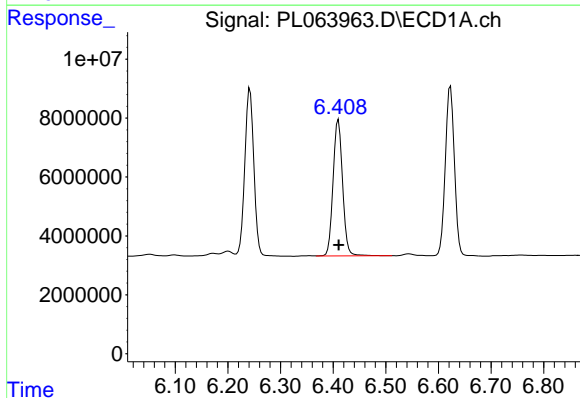
R.T.: 6.242 min
 Delta R.T.: -0.001 min
 Response: 68114221
 Conc: 21.16 ng/ml

Instrument :
 ECD_L
 ClientSampleId :



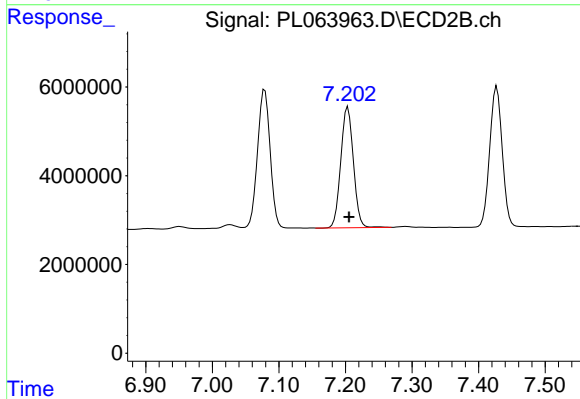
#15 Endosulfan II

R.T.: 7.079 min
 Delta R.T.: 0.000 min
 Response: 41182582
 Conc: 21.28 ng/ml



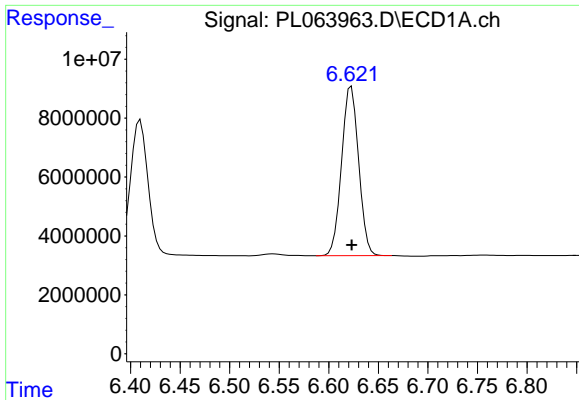
#18 Endrin aldehyde

R.T.: 6.410 min
 Delta R.T.: 0.000 min
 Response: 58025682
 Conc: 21.19 ng/ml



#18 Endrin aldehyde

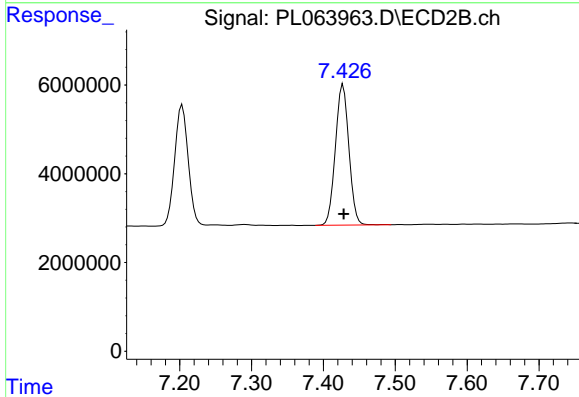
R.T.: 7.204 min
 Delta R.T.: -0.001 min
 Response: 35711363
 Conc: 21.49 ng/ml



#19 Endosulfan Sulfate

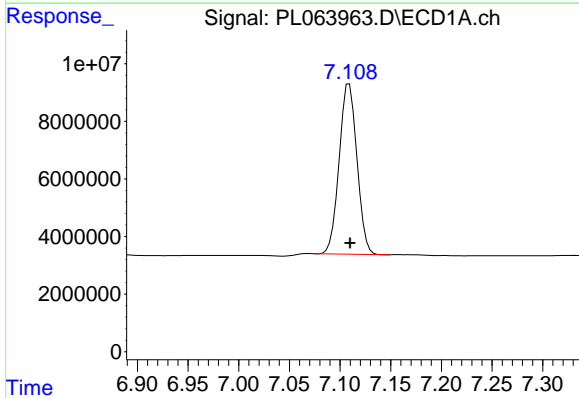
R.T.: 6.623 min
 Delta R.T.: 0.000 min
 Response: 68813958
 Conc: 21.05 ng/ml

Instrument :
 ECD_L
 ClientSampled :



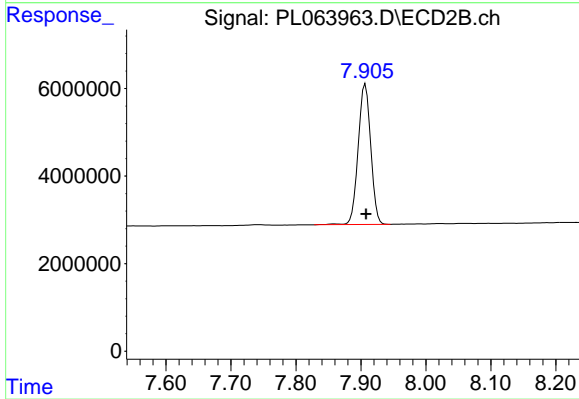
#19 Endosulfan Sulfate

R.T.: 7.427 min
 Delta R.T.: 0.000 min
 Response: 41354573
 Conc: 21.47 ng/ml



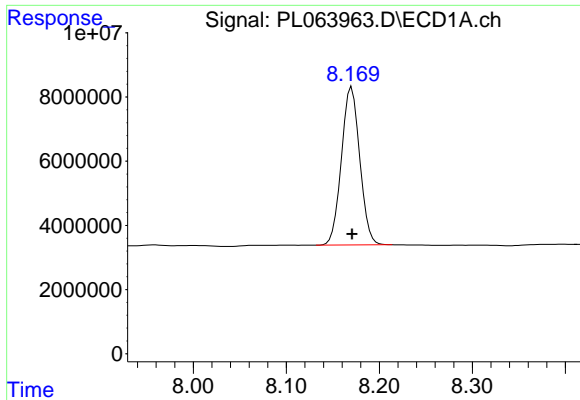
#21 Endrin ketone

R.T.: 7.109 min
 Delta R.T.: 0.000 min
 Response: 72188637
 Conc: 20.86 ng/ml



#21 Endrin ketone

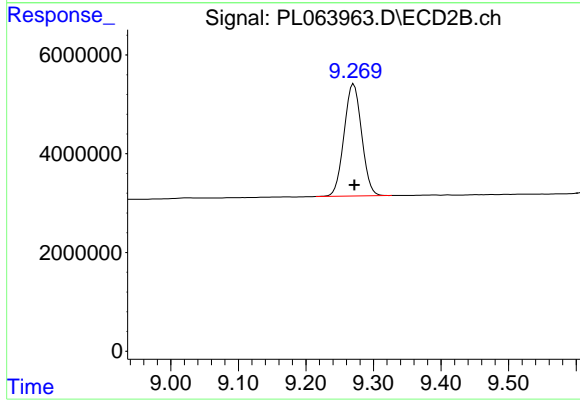
R.T.: 7.907 min
 Delta R.T.: 0.000 min
 Response: 42932993
 Conc: 21.24 ng/ml



#27 Decachlorobiphenyl

R.T.: 8.170 min
Delta R.T.: 0.000 min
Response: 67350835
Conc: 21.85 ng/ml

Instrument :
ECD_L
ClientSampleId :



#27 Decachlorobiphenyl

R.T.: 9.271 min
Delta R.T.: -0.001 min
Response: 40976636
Conc: 21.90 ng/ml