

Data Path : Z:\pestpcbsrv\HPCHEM1\ECD\_L\Data\PL010721\  
 Data File : PL063964.D  
 Signal(s) : Signal #1: ECD1A.ch Signal #2: ECD2B.ch  
 Acq On : 07 Jan 2021 12:07  
 Operator : AR\AJ  
 Sample : INDA301  
 Misc :  
 ALS Vial : 13 Sample Multiplier: 1

Instrument :  
 ECD\_L  
 ClientSampleId :  
 INDA301

Integration File signal 1: autoint1.e  
 Integration File signal 2: autoint2.e  
 Quant Time: Jan 07 12:20:41 2021  
 Quant Method : Z:\pestpcbsrv\HPCHEM1\ECD\_L\methods\PL010721CLP.M  
 Quant Title : GC Extractables  
 QLast Update : Thu Jan 07 12:20:27 2021  
 Response via : Initial Calibration  
 Integrator: ChemStation

Volume Inj. : 1 µl  
 Signal #1 Phase : ZB-MR2 Signal #2 Phase: ZB-MR1  
 Signal #1 Info : 30M x 0.32mm x0.2 Signal #2 Info : 30M x 0.32mm x 0.50µm

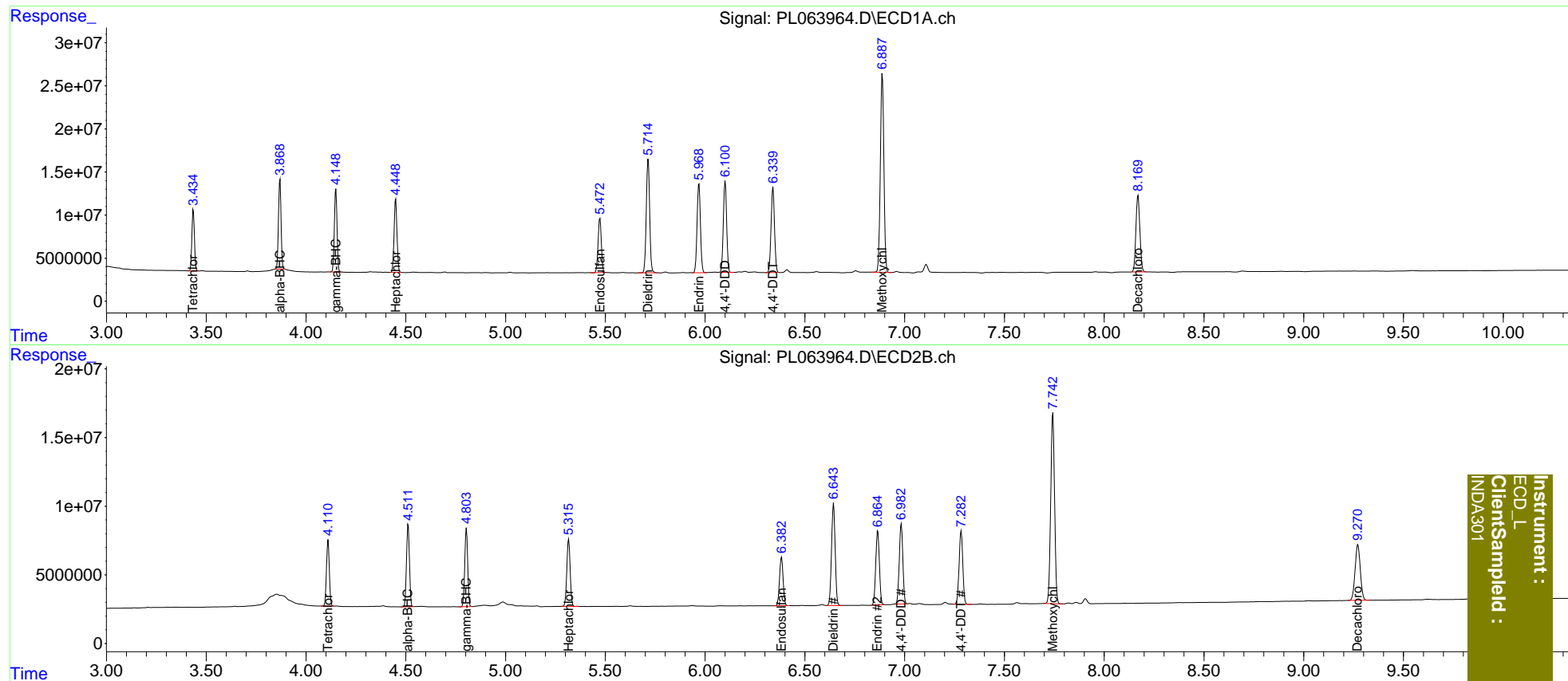
Compound	RT#1	RT#2	Resp#1	Resp#2	ng/ml	ng/ml
-----						
System Monitoring Compounds						
1) SA Tetrachlo...	3.435	4.111	62843785	48114035	20.000	20.000
27) SA Decachlor...	8.170	9.272	121.5E6	73713891	40.000	40.000
Target Compounds						
2) A alpha-BHC	3.870	4.512	94335874	60984498	20.000	20.000
3) MA gamma-BHC...	4.150	4.804	88453050	58229208	20.000	20.000
4) MA Heptachlor	4.450	5.317	87207376	57098892	20.000	20.000
9) A Endosulfan I	5.473	6.383	71725365	44661073	20.000	20.000
13) MA Dieldrin	5.715	6.644	155.4E6	93362434	40.000	40.000
14) MA Endrin	5.969	6.866	122.0E6	68685568	40.000	40.000
16) A 4,4'-DDD	6.101	6.983	121.4E6	72159364	40.000	40.000
17) MA 4,4'-DDT	6.341	7.283	118.4E6	68474296	40.000	40.000
20) A Methoxychlor	6.889	7.743	286.1E6	188.2E6	200.000	200.000
-----						

(f)=RT Delta > 1/2 Window (#)=Amounts differ by > 25% (m)=manual int.

Data Path : Z:\pestpcbsrv\HPCHEM1\ECD\_L\Data\PL010721\  
 Data File : PL063964.D  
 Signal(s) : Signal #1: ECD1A.ch Signal #2: ECD2B.ch  
 Acq On : 07 Jan 2021 12:07  
 Operator : AR\AJ  
 Sample : INDA301  
 Misc :  
 ALS Vial : 13 Sample Multiplier: 1

Integration File signal 1: autoint1.e  
 Integration File signal 2: autoint2.e  
 Quant Time: Jan 07 12:20:41 2021  
 Quant Method : Z:\pestpcbsrv\HPCHEM1\ECD\_L\methods\PL010721CLP.M  
 Quant Title : GC Extractables  
 QLast Update : Thu Jan 07 12:20:27 2021  
 Response via : Initial Calibration  
 Integrator: ChemStation

Volume Inj. : 1 µl  
 Signal #1 Phase : ZB-MR2 Signal #2 Phase: ZB-MR1  
 Signal #1 Info : 30M x 0.32mm x0.2 Signal #2 Info : 30M x 0.32mm x 0.50µm



Instrument :  
 ECD\_L  
 ClientSampleId :  
 INDA301