

Data Path : Z:\pestpcbsrv\HPCHEM1\ECD_L\Data\PL010721\
 Data File : PL063965.D
 Signal(s) : Signal #1: ECD1A.ch Signal #2: ECD2B.ch
 Acq On : 07 Jan 2021 12:21
 Operator : AR\AJ
 Sample : INDB301
 Misc :
 ALS Vial : 14 Sample Multiplier: 1

Instrument :
 ECD_L
 ClientSampleId :
 INDB301

Integration File signal 1: autoint1.e
 Integration File signal 2: autoint2.e
 Quant Time: Jan 08 05:34:05 2021
 Quant Method : Z:\pestpcbsrv\HPCHEM1\ECD_L\methods\PL010721CLP.M
 Quant Title : GC Extractables
 QLast Update : Fri Jan 08 05:32:50 2021
 Response via : Initial Calibration
 Integrator: ChemStation

Volume Inj. : 1 µl
 Signal #1 Phase : ZB-MR2 Signal #2 Phase: ZB-MR1
 Signal #1 Info : 30M x 0.32mm x0.2 Signal #2 Info : 30M x 0.32mm x 0.50µm

	Compound	RT#1	RT#2	Resp#1	Resp#2	ng/ml	ng/ml

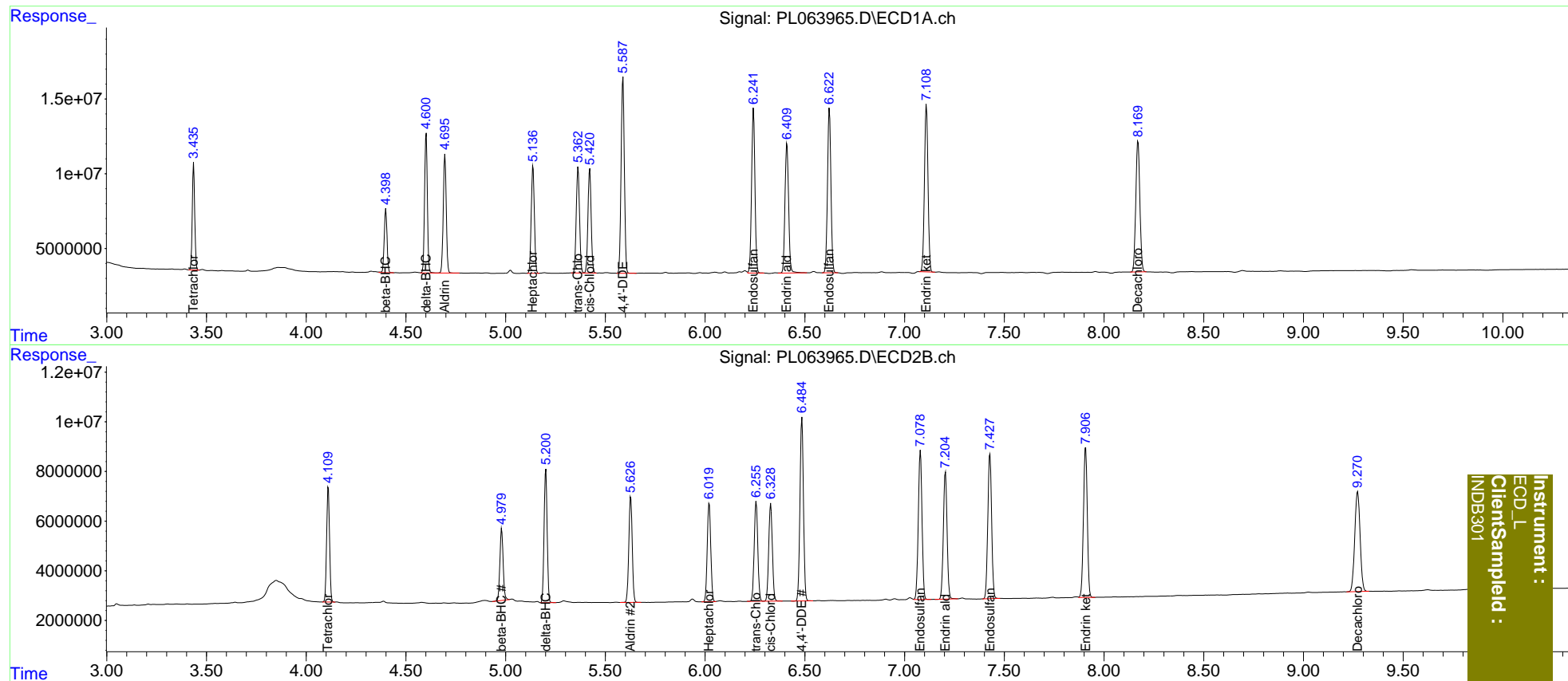
System Monitoring Compounds							
1)	SA Tetrachlo...	3.436	4.111	61746197	47057497	20.000	20.000
27)	SA Decachlor...	8.171	9.272	123.3E6	74852690	40.000	40.000
Target Compounds							
5)	MB Aldrin	4.696	5.627	82067308	51097701	20.000	20.000
6)	B beta-BHC	4.399	4.980	41880426	32557313	20.000	20.000
7)	B delta-BHC	4.602	5.202	91012310	57288354	20.000	20.000
8)	B Heptachlo...	5.137	6.021	77691463	48453300	20.000	20.000
10)	B trans-Chl...	5.363	6.256	80070377	50190424	20.000	20.000
11)	B cis-Chlor...	5.422	6.329	77938726	49290478	20.000	20.000
12)	B 4,4'-DDE	5.588	6.486	147.3E6	89434927	40.000	40.000
15)	B Endosulfa...	6.243	7.080	128.7E6	77399785	40.000	40.000
18)	B Endrin al...	6.411	7.205	109.5E6	66459552	40.000	40.000
19)	B Endosulfa...	6.623	7.428	130.8E6	77037784	40.000	40.000
21)	B Endrin ke...	7.110	7.908	138.4E6	80853234	40.000	40.000

(f)=RT Delta > 1/2 Window (#)=Amounts differ by > 25% (m)=manual int.

Data Path : Z:\pestpcbsrv\HPCHEM1\ECD_L\Data\PL010721\
 Data File : PL063965.D
 Signal(s) : Signal #1: ECD1A.ch Signal #2: ECD2B.ch
 Acq On : 07 Jan 2021 12:21
 Operator : AR\AJ
 Sample : INDB301
 Misc :
 ALS Vial : 14 Sample Multiplier: 1

Integration File signal 1: autoint1.e
 Integration File signal 2: autoint2.e
 Quant Time: Jan 08 05:34:05 2021
 Quant Method : Z:\pestpcbsrv\HPCHEM1\ECD_L\methods\PL010721CLP.M
 Quant Title : GC Extractables
 QLast Update : Fri Jan 08 05:32:50 2021
 Response via : Initial Calibration
 Integrator: ChemStation

Volume Inj. : 1 µl
 Signal #1 Phase : ZB-MR2 Signal #2 Phase: ZB-MR1
 Signal #1 Info : 30M x 0.32mm x0.2 Signal #2 Info : 30M x 0.32mm x 0.50µm



Instrument :
 ECD_L
 ClientSampleId :
 INDB301