

Data Path : Z:\pestpcbsrv\HPCHEM1\ECD_L\Data\PL010821\
 Data File : PL063987.D
 Signal(s) : Signal #1: ECD1A.ch Signal #2: ECD2B.ch
 Acq On : 08 Jan 2021 09:08
 Operator : AR\AJ
 Sample : PB133960BL
 Misc :
 ALS Vial : 5 Sample Multiplier: 1

Instrument :
 ECD_L
 ClientSampleId :

Integration File signal 1: autoint1.e
 Integration File signal 2: autoint2.e
 Quant Time: Jan 08 14:32:24 2021
 Quant Method : Z:\pestpcbsrv\HPCHEM1\ECD_L\methods\PL122220.M
 Quant Title : GC Extractables
 QLast Update : Tue Dec 22 14:02:42 2020
 Response via : Initial Calibration
 Integrator: ChemStation

Volume Inj. : 1 µl
 Signal #1 Phase : ZB-MR2 Signal #2 Phase: ZB-MR1
 Signal #1 Info : 30M x 0.32mm x0.2 Signal #2 Info : 30M x 0.32mm x0.5µm

Compound	RT#1	RT#2	Resp#1	Resp#2	ng/ml	ng/ml

System Monitoring Compounds						
1) SA Tetrachlo...	3.438	4.111	60378239	46315363	20.140	18.141
28) SA Decachlor...	8.174	9.275	63260079	37246492	22.961	18.891

Target Compounds

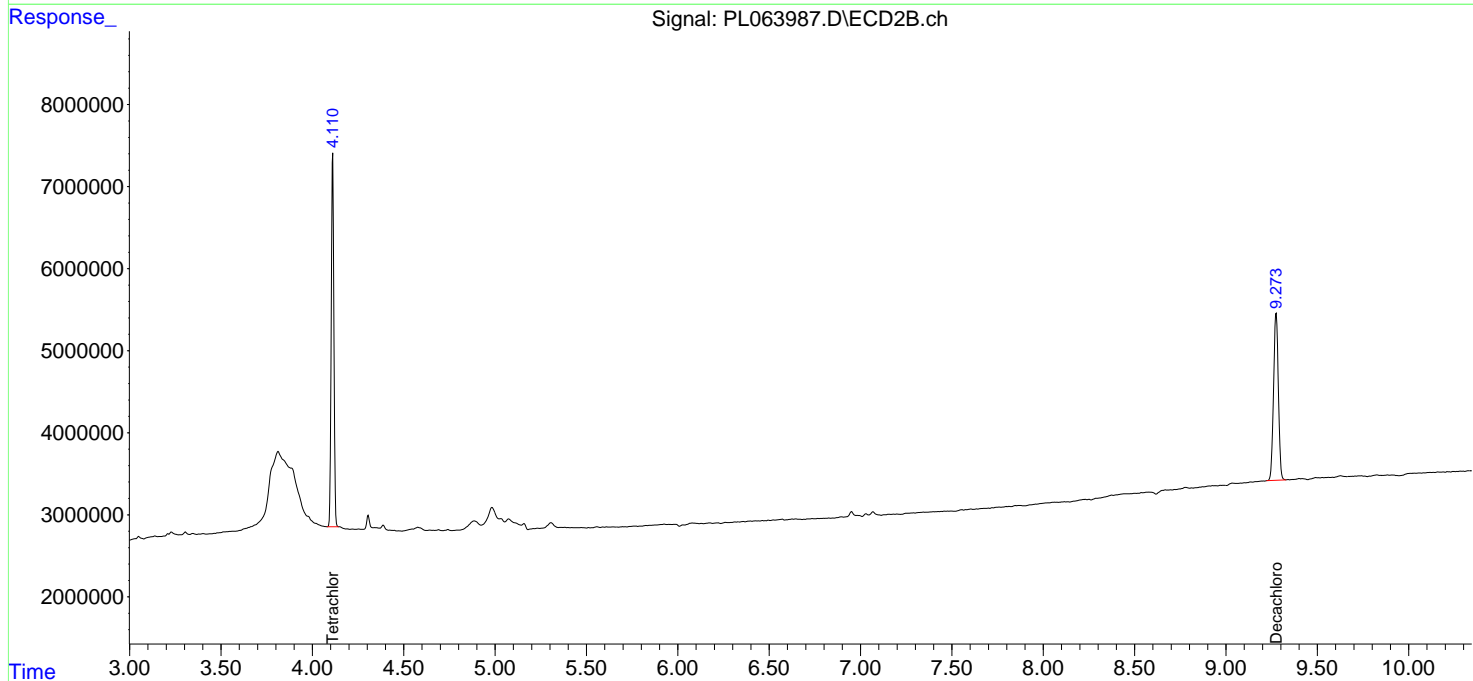
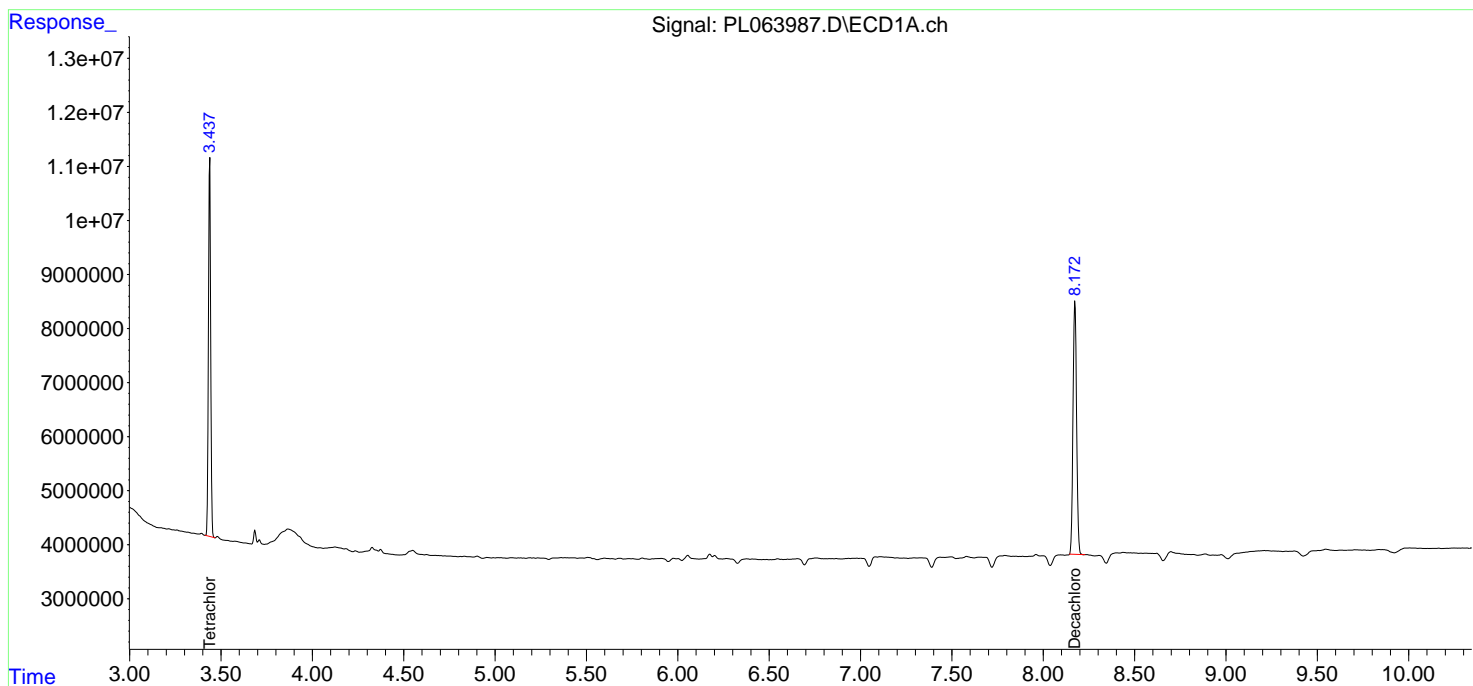
(f)=RT Delta > 1/2 Window (#)=Amounts differ by > 25% (m)=manual int.

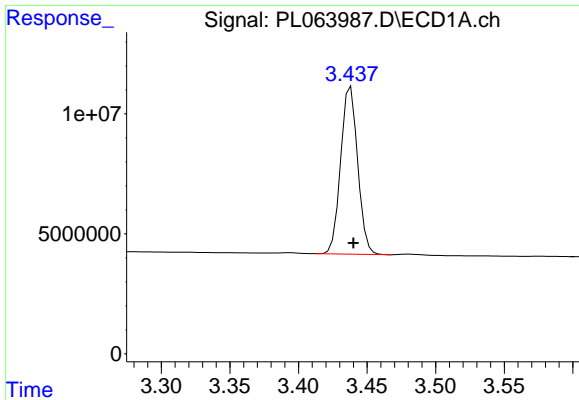
Data Path : Z:\pestpcbsrv\HPCHEM1\ECD_L\Data\PL010821\
 Data File : PL063987.D
 Signal(s) : Signal #1: ECD1A.ch Signal #2: ECD2B.ch
 Acq On : 08 Jan 2021 09:08
 Operator : AR\AJ
 Sample : PB133960BL
 Misc :
 ALS Vial : 5 Sample Multiplier: 1

Instrument :
 ECD_L
 ClientSampled :

Integration File signal 1: autoint1.e
 Integration File signal 2: autoint2.e
 Quant Time: Jan 08 14:32:24 2021
 Quant Method : Z:\pestpcbsrv\HPCHEM1\ECD_L\methods\PL122220.M
 Quant Title : GC Extractables
 QLast Update : Tue Dec 22 14:02:42 2020
 Response via : Initial Calibration
 Integrator: ChemStation

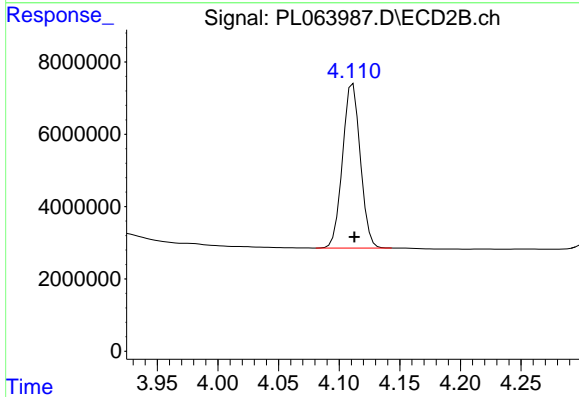
Volume Inj. : 1 µl
 Signal #1 Phase : ZB-MR2 Signal #2 Phase: ZB-MR1
 Signal #1 Info : 30M x 0.32mm x0.2 Signal #2 Info : 30M x 0.32mm x0.5µm



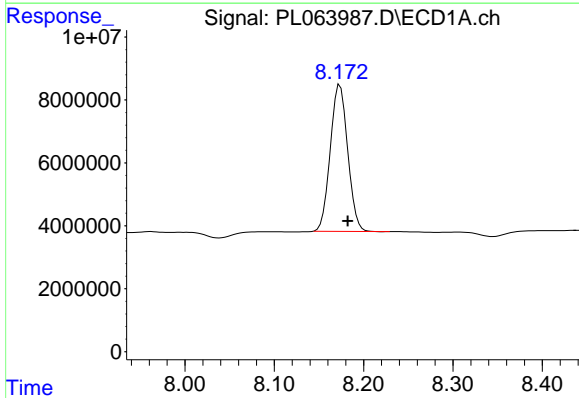


#1 Tetrachloro-m-xylene
 R.T.: 3.438 min
 Delta R.T.: -0.002 min
 Response: 60378239
 Conc: 20.14 ng/ml

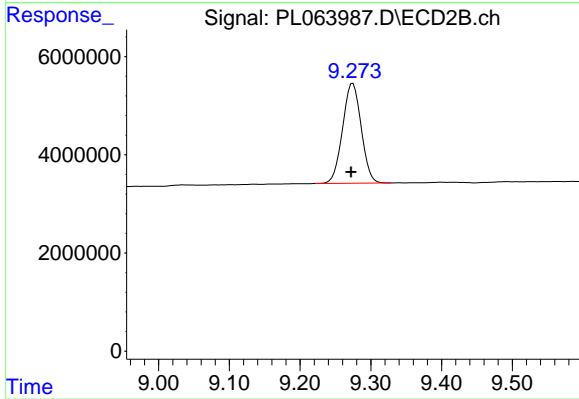
Instrument :
 ECD_L
 ClientSampled :



#1 Tetrachloro-m-xylene
 R.T.: 4.111 min
 Delta R.T.: -0.001 min
 Response: 46315363
 Conc: 18.14 ng/ml



#28 Decachlorobiphenyl
 R.T.: 8.174 min
 Delta R.T.: -0.009 min
 Response: 63260079
 Conc: 22.96 ng/ml



#28 Decachlorobiphenyl
 R.T.: 9.275 min
 Delta R.T.: 0.003 min
 Response: 37246492
 Conc: 18.89 ng/ml