

Data Path : Z:\pestpcbsrv\HPCHEM1\ECD\_L\Data\PL010919\  
 Data File : PL043710.D  
 Signal(s) : Signal #1: ECD1A.ch Signal #2: ECD2B.ch  
 Acq On : 08 Jan 2019 20:49  
 Operator : AJ\SJ  
 Sample : K1074-01  
 Misc :  
 ALS Vial : 15 Sample Multiplier: 1

**Instrument :**  
 ECD\_L  
**ClientSampled :**  
 W12-1

**Manual Integrations**  
**APPROVED**  
 Sohil  
 1/9/2019 9:25:06 AM

Integration File signal 1: autoint1.e  
 Integration File signal 2: autoint2.e  
 Quant Time: Jan 09 06:58:28 2019  
 Quant Method : Z:\pestpcbsrv\HPCHEM1\ECD\_L\methods\PL010919.M  
 Quant Title : GC Extractables  
 QLast Update : Wed Jan 09 06:15:46 2019  
 Response via : Initial Calibration  
 Integrator: ChemStation

Volume Inj. : 2 µl  
 Signal #1 Phase : ZB-MR1 Signal #2 Phase: ZB-MR2  
 Signal #1 Info : 30M x 0.32mm x0.5 Signal #2 Info : 30M x 0.32mm x0.25µm

Compound	RT#1	RT#2	Resp#1	Resp#2	ng/ml	ng/ml
-----						
System Monitoring Compounds						
1) SA Tetrachlo...	3.407	4.035	66903569	31289149	10.426	10.763
28) SA Decachlor...	8.120	9.134	75259989	26979663	10.486	10.002
Target Compounds						
5) MB Aldrin	4.655	5.530	7013357	2980382	0.831m	0.795m
-----						

(f)=RT Delta > 1/2 Window (#)=Amounts differ by > 25% (m)=manual int.

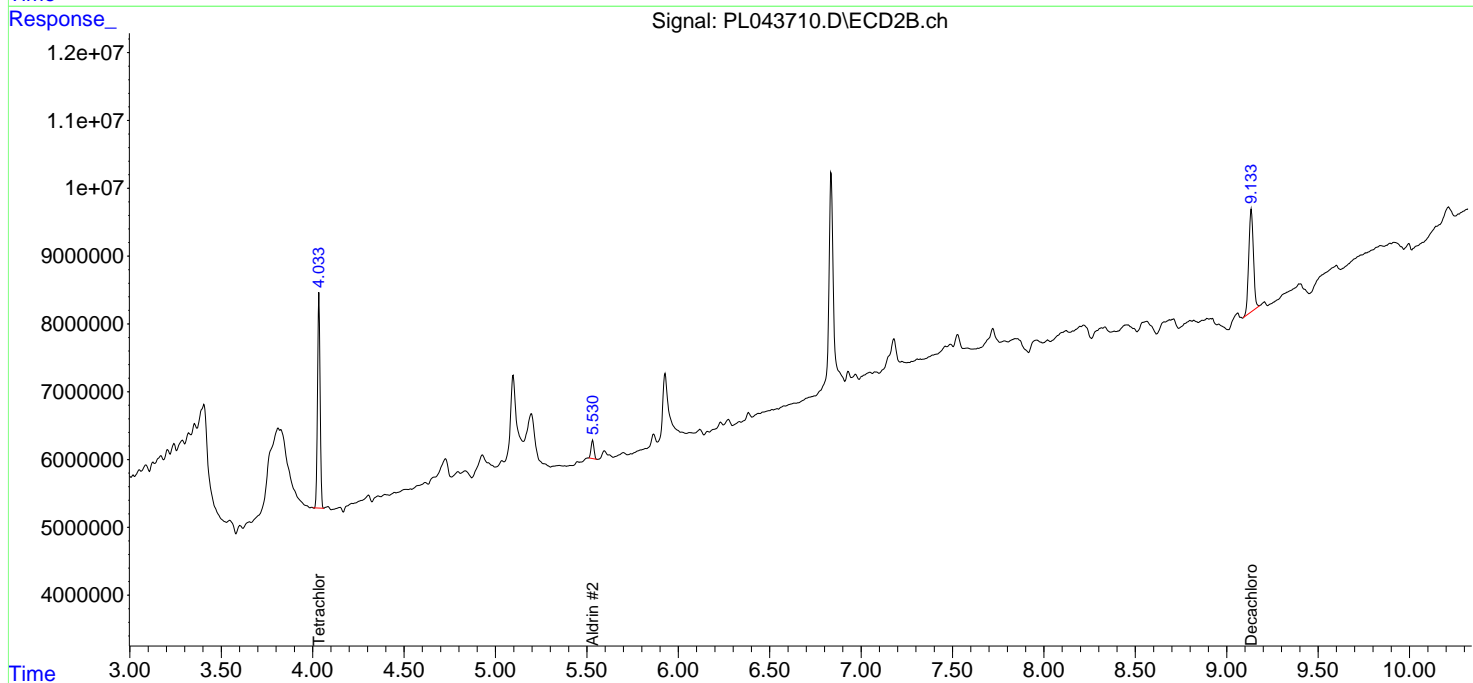
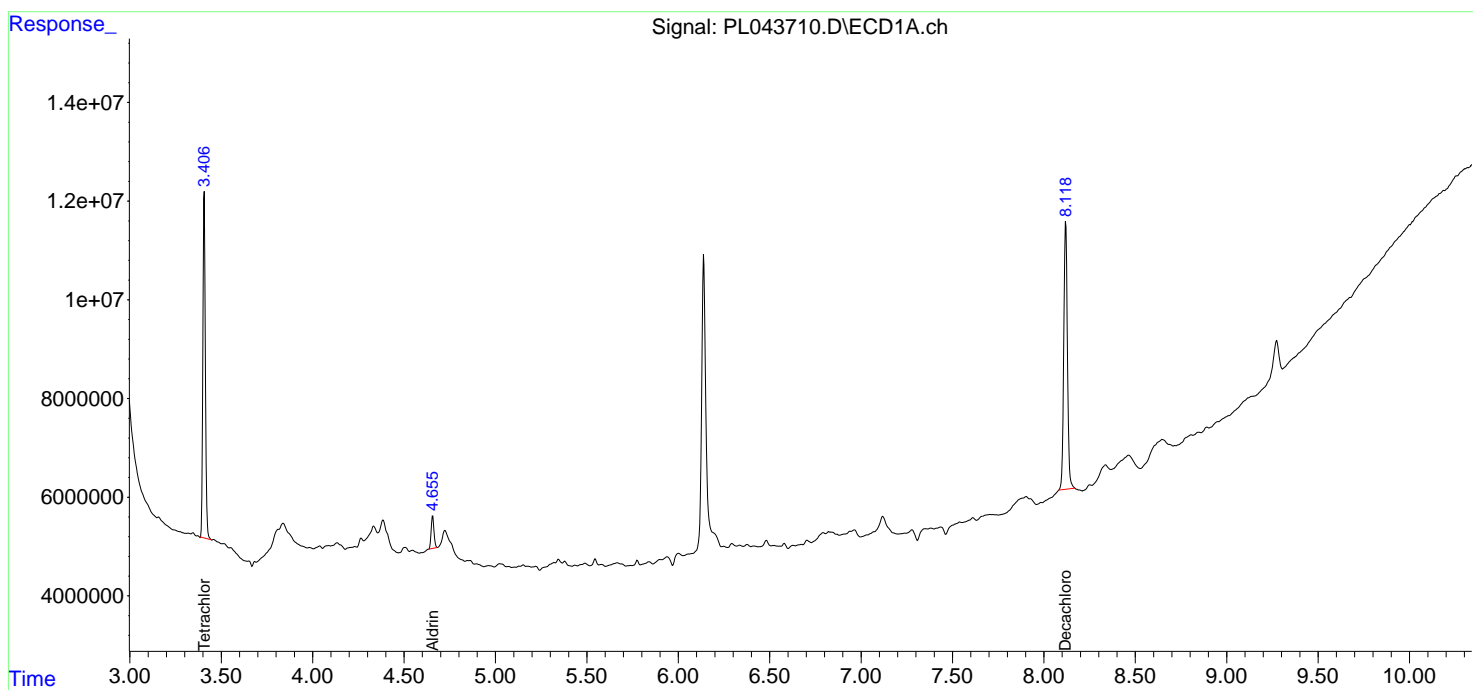
Data Path : Z:\pestpcbsrv\HPCHEM1\ECD\_L\Data\PL010919\  
 Data File : PL043710.D  
 Signal(s) : Signal #1: ECD1A.ch Signal #2: ECD2B.ch  
 Acq On : 08 Jan 2019 20:49  
 Operator : AJ\SJ  
 Sample : K1074-01  
 Misc :  
 ALS Vial : 15 Sample Multiplier: 1

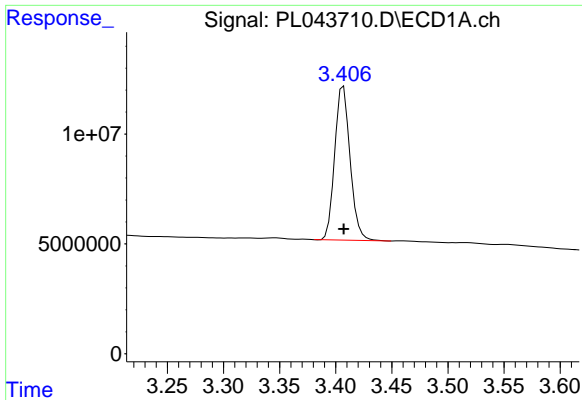
Instrument :  
 ECD\_L  
 ClientSampled :  
 W12-1

Manual Integrations  
**APPROVED**  
 Sohil  
 1/9/2019 9:25:06 AM

Integration File signal 1: autoint1.e  
 Integration File signal 2: autoint2.e  
 Quant Time: Jan 09 06:58:28 2019  
 Quant Method : Z:\pestpcbsrv\HPCHEM1\ECD\_L\methods\PL010919.M  
 Quant Title : GC Extractables  
 QLast Update : Wed Jan 09 06:15:46 2019  
 Response via : Initial Calibration  
 Integrator: ChemStation

Volume Inj. : 2 µl  
 Signal #1 Phase : ZB-MR1 Signal #2 Phase: ZB-MR2  
 Signal #1 Info : 30M x 0.32mm x0.5 Signal #2 Info : 30M x 0.32mm x0.25µm

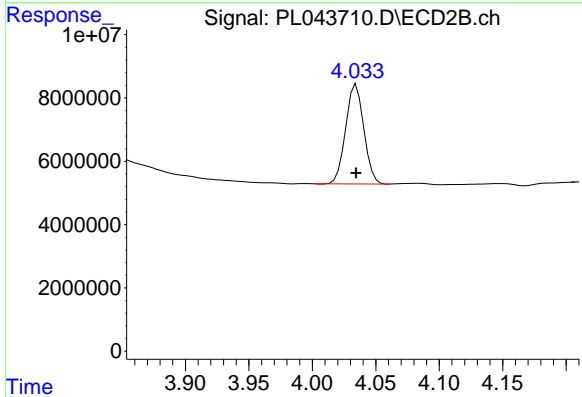




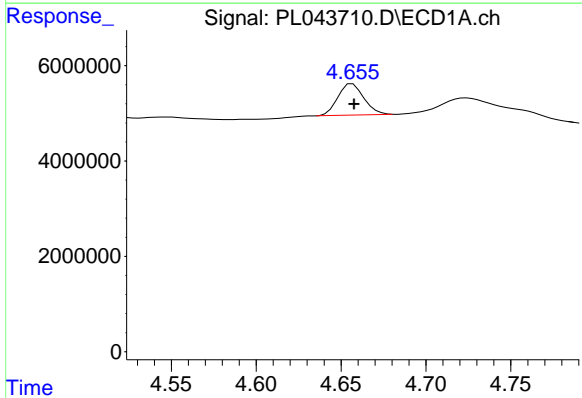
#1 Tetrachloro-m-xylene  
 R.T.: 3.407 min  
 Delta R.T.: 0.000 min  
 Response: 66903569  
 Conc: 10.43 ng/ml

Instrument :  
 ECD\_L  
 ClientSampled :  
 W12-1

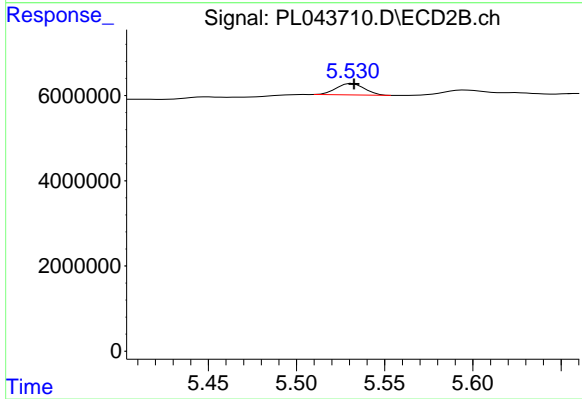
Manual Integrations  
 APPROVED  
 Sohil  
 1/9/2019 9:25:06 AM



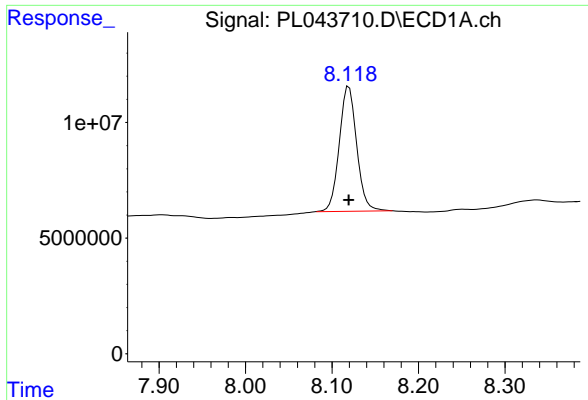
#1 Tetrachloro-m-xylene  
 R.T.: 4.035 min  
 Delta R.T.: 0.000 min  
 Response: 31289149  
 Conc: 10.76 ng/ml



#5 Aldrin  
 R.T.: 4.655 min  
 Delta R.T.: -0.002 min  
 Response: 7013357  
 Conc: 0.83 ng/ml m



#5 Aldrin  
 R.T.: 5.530 min  
 Delta R.T.: -0.002 min  
 Response: 2980382  
 Conc: 0.80 ng/ml m



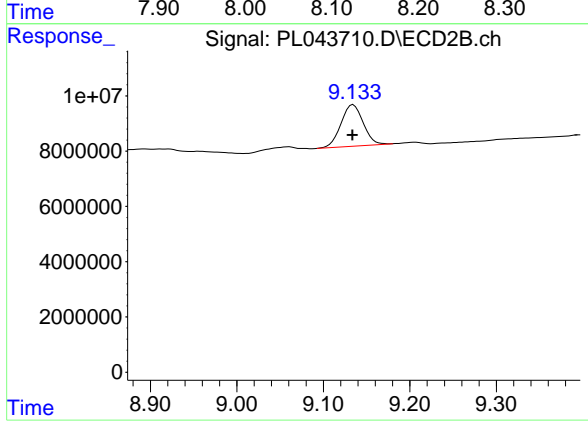
#28 Decachlorobiphenyl

R.T.: 8.120 min  
Delta R.T.: 0.000 min  
Response: 75259989  
Conc: 10.49 ng/ml

Instrument :  
ECD\_L  
ClientSampled :  
W12-1

Manual Integrations  
APPROVED

Sohil  
1/9/2019 9:25:06 AM



#28 Decachlorobiphenyl

R.T.: 9.134 min  
Delta R.T.: 0.000 min  
Response: 26979663  
Conc: 10.00 ng/ml