

Data Path : Z:\pestpcbsrv\HPCHEM1\ECD\_L\Data\PL011019\  
 Data File : PL043742.D  
 Signal(s) : Signal #1: ECD1A.ch Signal #2: ECD2B.ch  
 Acq On : 10 Jan 2019 12:46  
 Operator : AJ\SJ  
 Sample : PSTDICC075  
 Misc :  
 ALS Vial : 6 Sample Multiplier: 1

Instrument :  
 ECD\_L  
 ClientSampleId :  
 PSTDICC075

Integration File signal 1: autoint1.e  
 Integration File signal 2: autoint2.e  
 Quant Time: Jan 10 13:32:40 2019  
 Quant Method : Z:\pestpcbsrv\HPCHEM1\ECD\_L\methods\PL011019.M  
 Quant Title : GC Extractables  
 QLast Update : Thu Jan 10 13:31:26 2019  
 Response via : Initial Calibration  
 Integrator: ChemStation

Volume Inj. : 2 µl  
 Signal #1 Phase : ZB-MR1 Signal #2 Phase: ZB-MR2  
 Signal #1 Info : 30M x 0.32mm x0.5 Signal #2 Info : 30M x 0.32mm x0.25µm

Compound	RT#1	RT#2	Resp#1	Resp#2	ng/ml	ng/ml
-----						
System Monitoring Compounds						
1) SA Tetrachlo...	3.564	4.009	303.4E6	124.6E6	74.666	74.077
28) SA Decachlor...	8.297	9.084	363.9E6	98485751	73.371	72.163
Target Compounds						
2) A alpha-BHC	4.006	4.400	492.4E6	177.3E6	76.338	76.063
3) MA gamma-BHC...	4.290	4.686	441.8E6	161.5E6	76.108	75.060
4) MA Heptachlor	4.588	5.196	411.6E6	145.1E6	75.804	75.124
5) MB Aldrin	4.836	5.502	431.1E6	148.6E6	76.155	75.605
6) B beta-BHC	4.543	4.857	173.8E6	68271051	73.953	74.548
7) B delta-BHC	4.747	5.074	413.2E6	146.1E6	76.743	75.941
8) B Heptachlo...	5.280	5.888	391.1E6	135.8E6	75.390	74.683
9) A Endosulfan I	5.619	6.245	362.3E6	123.0E6	75.451	74.302
10) B gamma-Chl...	5.505	6.122	396.5E6	135.7E6	75.609	74.637
11) B alpha-Chl...	5.563	6.195	384.4E6	132.3E6	75.057	74.187
12) B 4,4'-DDE	5.725	6.351	358.1E6	117.2E6	76.577	75.463
13) MA Dieldrin	5.861	6.502	398.9E6	130.4E6	76.488	75.525
14) MA Endrin	6.118	6.720	345.1E6	105.0E6	76.679	75.493
15) B Endosulfa...	6.391	6.929	340.4E6	109.2E6	75.474	74.626
16) A 4,4'-DDD	6.241	6.841	294.8E6	91837935	76.261	74.272
17) MA 4,4'-DDT	6.480	7.140	309.0E6	99079691	76.916	74.390
18) B Endrin al...	6.559	7.052	281.5E6	92403659	74.609	74.002
19) B Endosulfa...	6.770	7.275	346.4E6	111.4E6	75.318	75.027
20) A Methoxychlor	7.021	7.597	156.2E6	49984995	74.721	74.733
21) B Endrin ke...	7.259	7.746	402.1E6	120.2E6	74.759	73.742

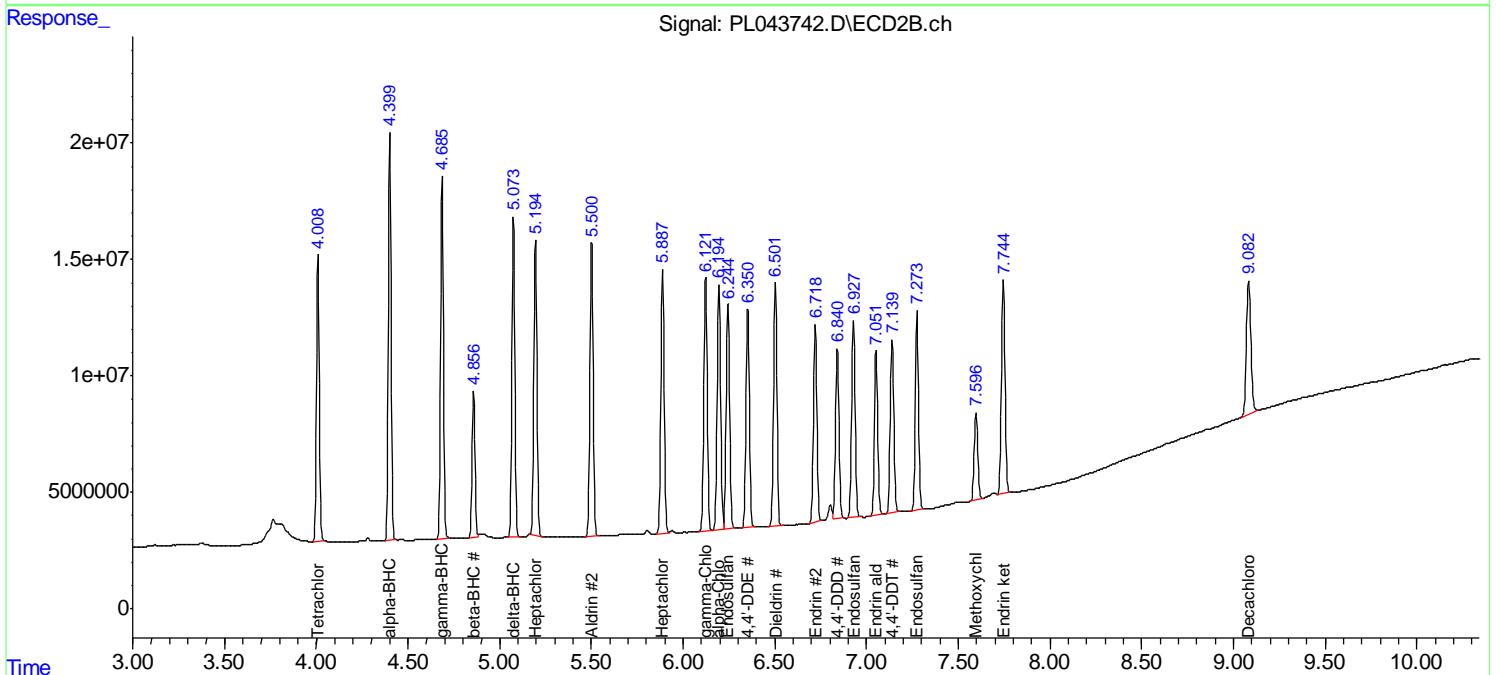
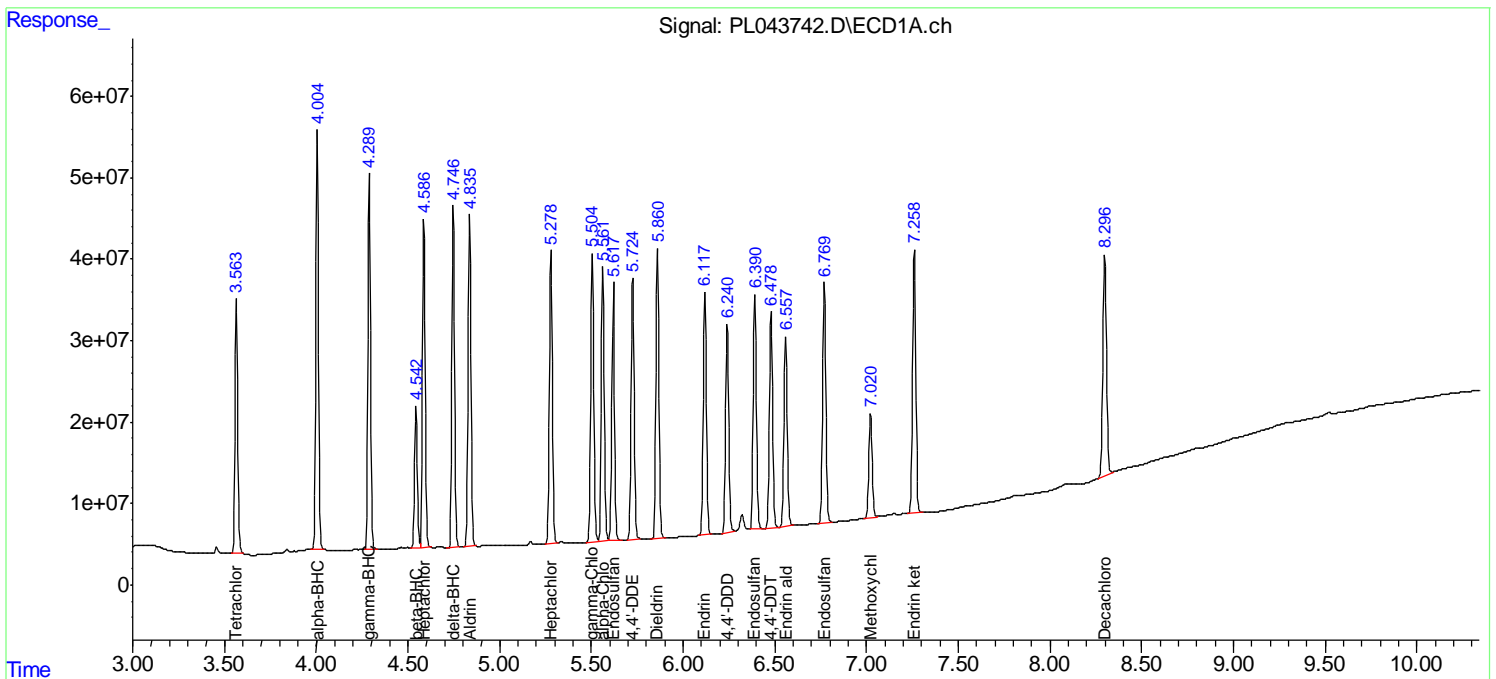
(f)=RT Delta > 1/2 Window (#)=Amounts differ by > 25% (m)=manual int.

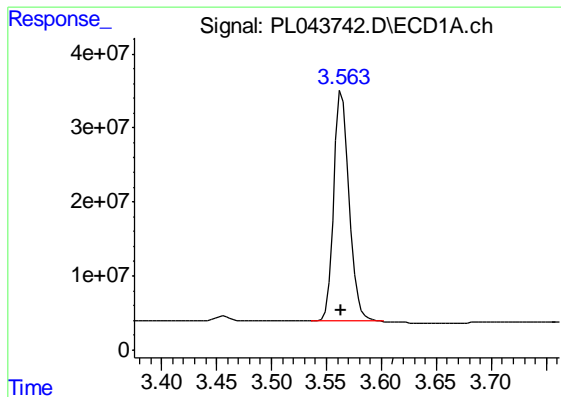
Data Path : Z:\pestpcbsrv\HPCHEM1\ECD\_L\Data\PL011019\  
 Data File : PL043742.D  
 Signal(s) : Signal #1: ECD1A.ch Signal #2: ECD2B.ch  
 Acq On : 10 Jan 2019 12:46  
 Operator : AJ\SJ  
 Sample : PSTDI0075  
 Misc :  
 ALS Vial : 6 Sample Multiplier: 1

Instrument :  
 ECD\_L  
 Client Sampled :  
 PSTDI0075

Integration File signal 1: autoint1.e  
 Integration File signal 2: autoint2.e  
 Quant Time: Jan 10 13:32:40 2019  
 Quant Method : Z:\pestpcbsrv\HPCHEM1\ECD\_L\methods\PL011019.M  
 Quant Title : GC Extractables  
 QLast Update : Thu Jan 10 13:31:26 2019  
 Response via : Initial Calibration  
 Integrator: ChemStation

Volume Inj. : 2 µl  
 Signal #1 Phase : ZB-MR1 Signal #2 Phase: ZB-MR2  
 Signal #1 Info : 30M x 0.32mm x0.5 Signal #2 Info : 30M x 0.32mm x0.25µm

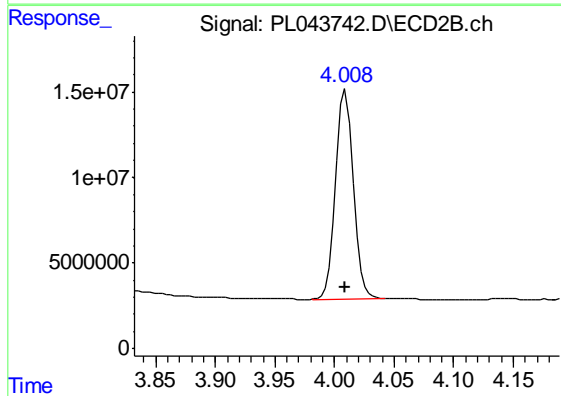




#1 Tetrachloro-m-xylene

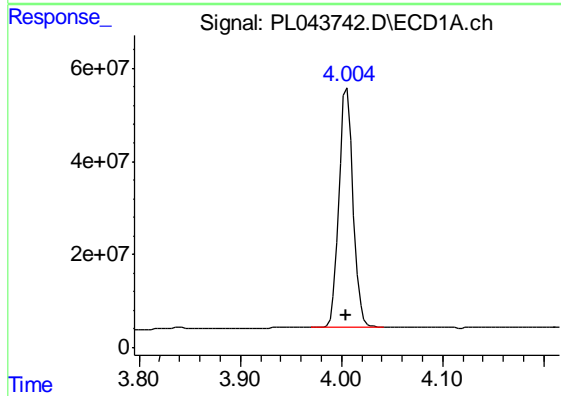
R.T.: 3.564 min  
Delta R.T.: 0.000 min  
Response: 303395747  
Conc: 74.67 ng/ml

Instrument :  
ECD\_L  
ClientSampleId :  
PSTDICC075



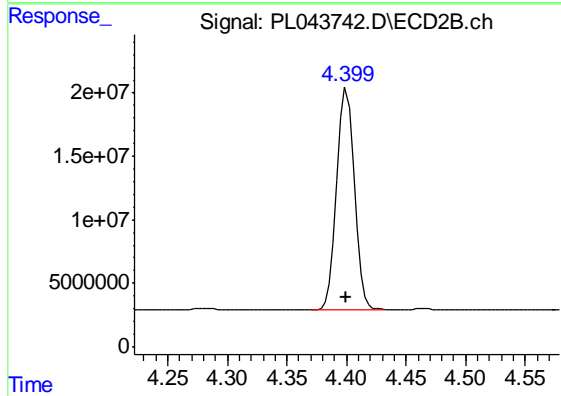
#1 Tetrachloro-m-xylene

R.T.: 4.009 min  
Delta R.T.: 0.000 min  
Response: 124616332  
Conc: 74.08 ng/ml



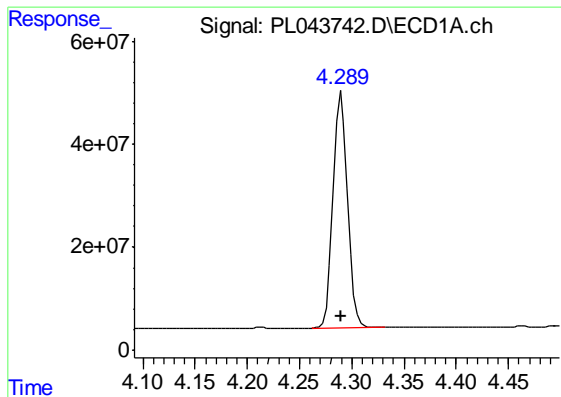
#2 alpha-BHC

R.T.: 4.006 min  
Delta R.T.: 0.000 min  
Response: 492434833  
Conc: 76.34 ng/ml



#2 alpha-BHC

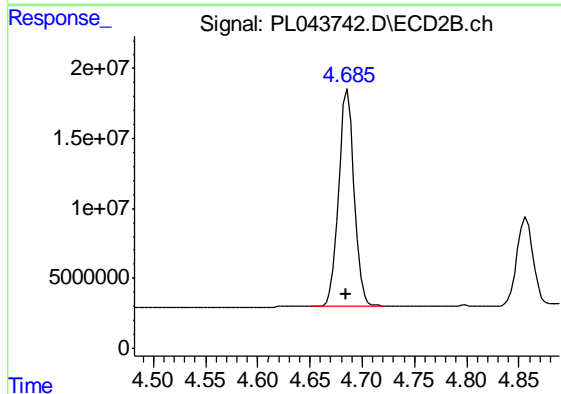
R.T.: 4.400 min  
Delta R.T.: 0.000 min  
Response: 177299081  
Conc: 76.06 ng/ml



#3 gamma-BHC (Lindane)

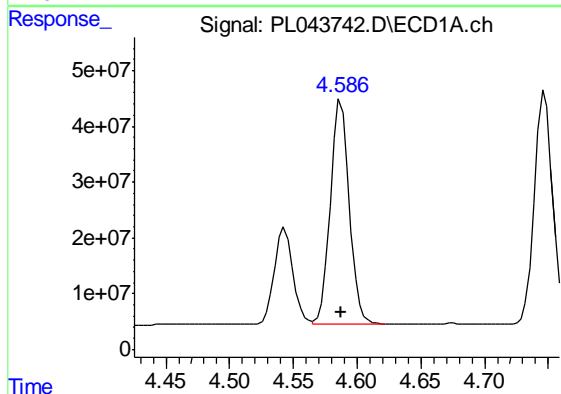
R.T.: 4.290 min  
 Delta R.T.: 0.000 min  
 Response: 441798933  
 Conc: 76.11 ng/ml

Instrument :  
 ECD\_L  
 ClientSampleId :  
 PSTDICC075



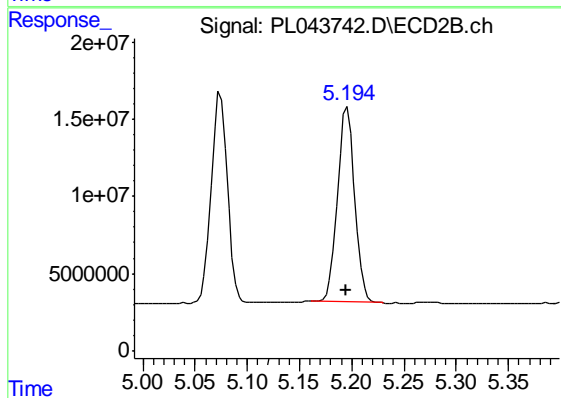
#3 gamma-BHC (Lindane)

R.T.: 4.686 min  
 Delta R.T.: 0.000 min  
 Response: 161475715  
 Conc: 75.06 ng/ml



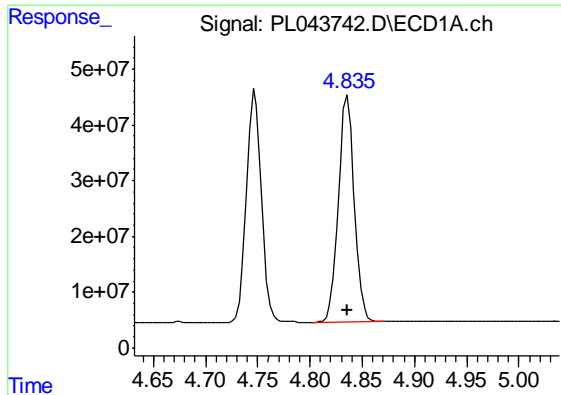
#4 Heptachlor

R.T.: 4.588 min  
 Delta R.T.: 0.000 min  
 Response: 411555872  
 Conc: 75.80 ng/ml



#4 Heptachlor

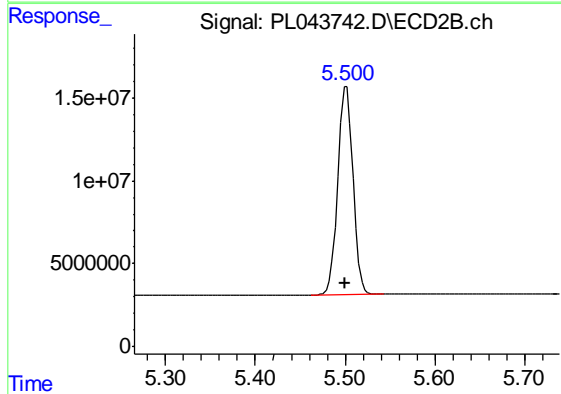
R.T.: 5.196 min  
 Delta R.T.: 0.001 min  
 Response: 145136725  
 Conc: 75.12 ng/ml



#5 Aldrin

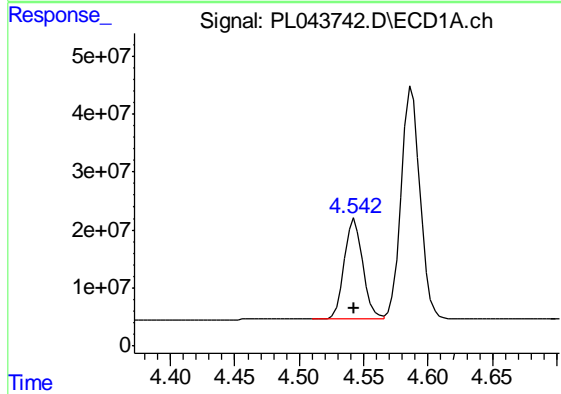
R.T.: 4.836 min  
 Delta R.T.: 0.000 min  
 Response: 431069916  
 Conc: 76.16 ng/ml

Instrument :  
 ECD\_L  
 ClientSampled :  
 PSTDICC075



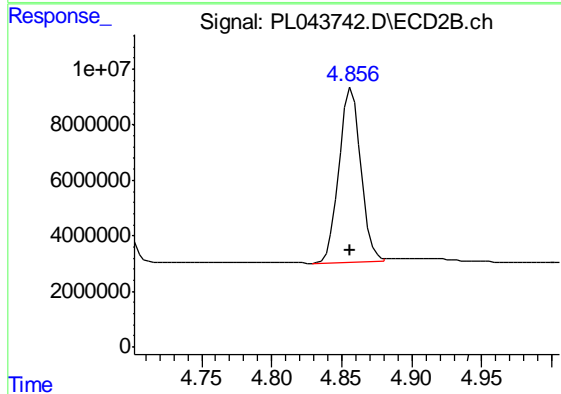
#5 Aldrin

R.T.: 5.502 min  
 Delta R.T.: 0.001 min  
 Response: 148618913  
 Conc: 75.61 ng/ml



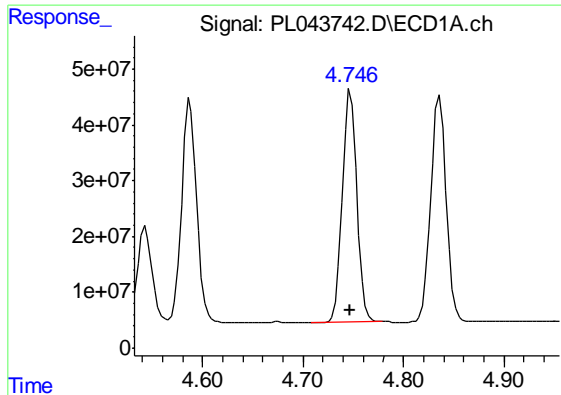
#6 beta-BHC

R.T.: 4.543 min  
 Delta R.T.: 0.000 min  
 Response: 173764588  
 Conc: 73.95 ng/ml



#6 beta-BHC

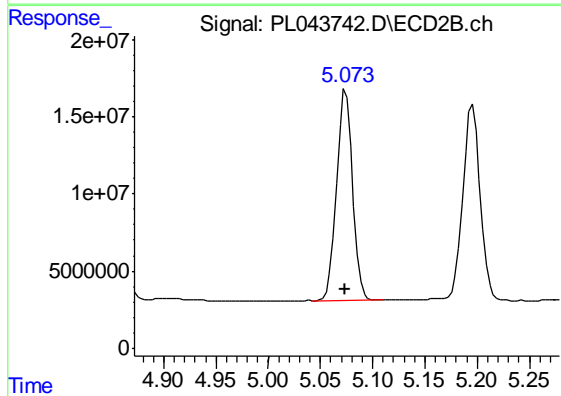
R.T.: 4.857 min  
 Delta R.T.: 0.000 min  
 Response: 68271051  
 Conc: 74.55 ng/ml



#7 delta-BHC

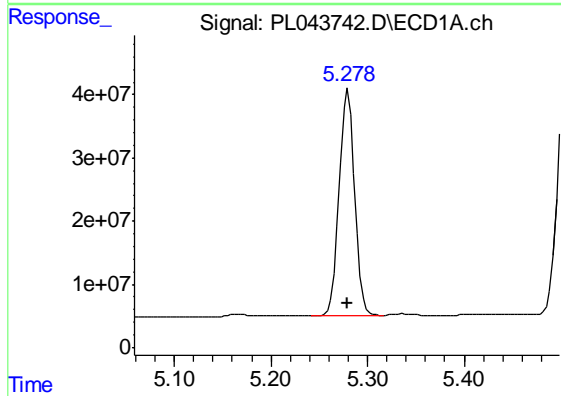
R.T.: 4.747 min  
 Delta R.T.: 0.000 min  
 Response: 413239421  
 Conc: 76.74 ng/ml

Instrument :  
 ECD\_L  
 ClientSampleId :  
 PSTDICC075



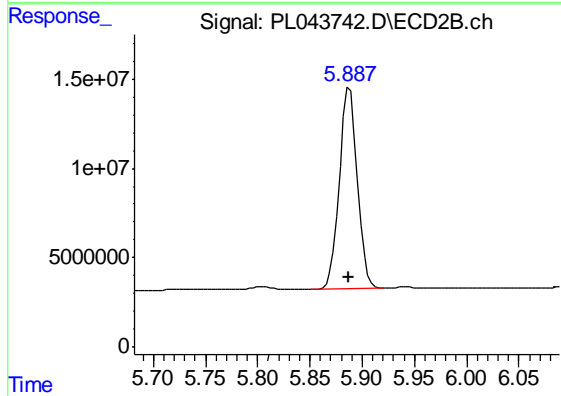
#7 delta-BHC

R.T.: 5.074 min  
 Delta R.T.: 0.001 min  
 Response: 146053969  
 Conc: 75.94 ng/ml



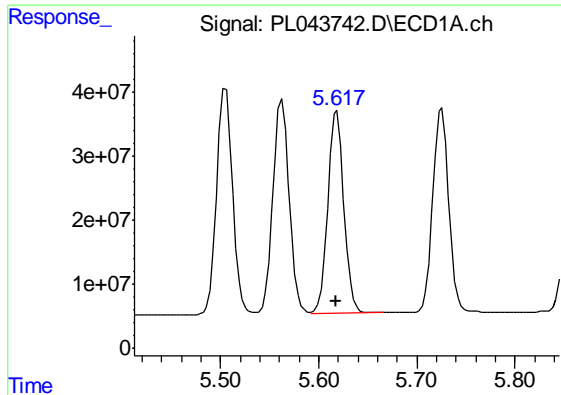
#8 Heptachlor epoxide

R.T.: 5.280 min  
 Delta R.T.: 0.000 min  
 Response: 391094800  
 Conc: 75.39 ng/ml



#8 Heptachlor epoxide

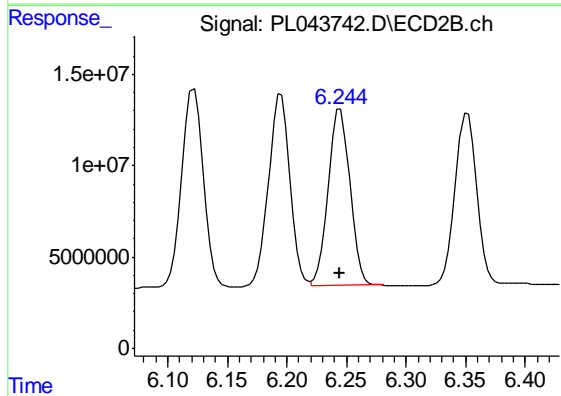
R.T.: 5.888 min  
 Delta R.T.: 0.000 min  
 Response: 135822734  
 Conc: 74.68 ng/ml



#9 Endosulfan I

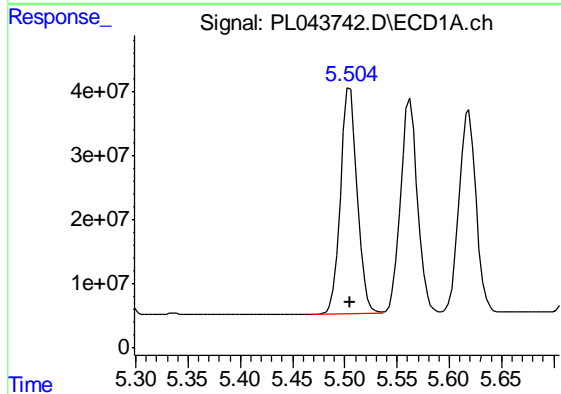
R.T.: 5.619 min  
Delta R.T.: 0.000 min  
Response: 362269572  
Conc: 75.45 ng/ml

Instrument :  
ECD\_L  
ClientSampleId :  
PSTDICC075



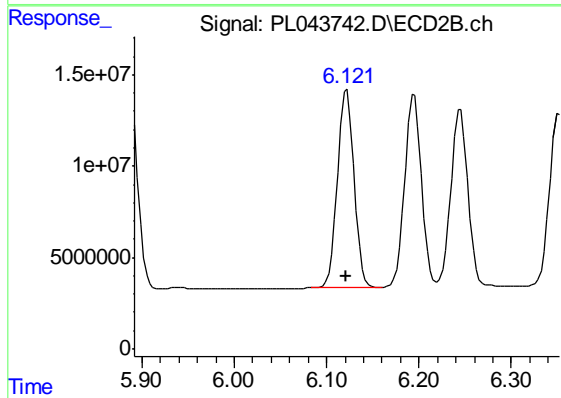
#9 Endosulfan I

R.T.: 6.245 min  
Delta R.T.: 0.001 min  
Response: 123029073  
Conc: 74.30 ng/ml



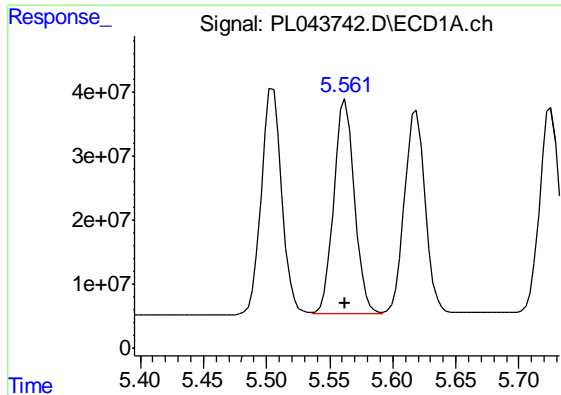
#10 gamma-Chlordane

R.T.: 5.505 min  
Delta R.T.: 0.000 min  
Response: 396498121  
Conc: 75.61 ng/ml



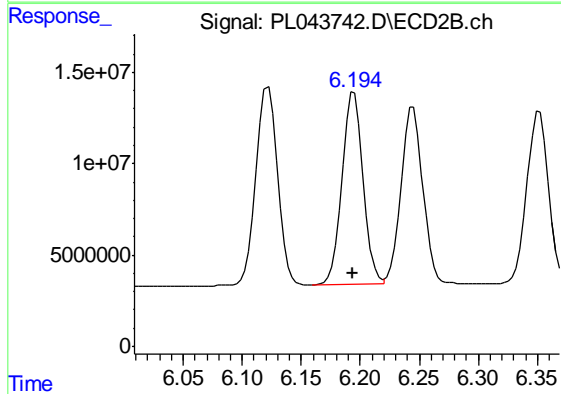
#10 gamma-Chlordane

R.T.: 6.122 min  
Delta R.T.: 0.000 min  
Response: 135723019  
Conc: 74.64 ng/ml

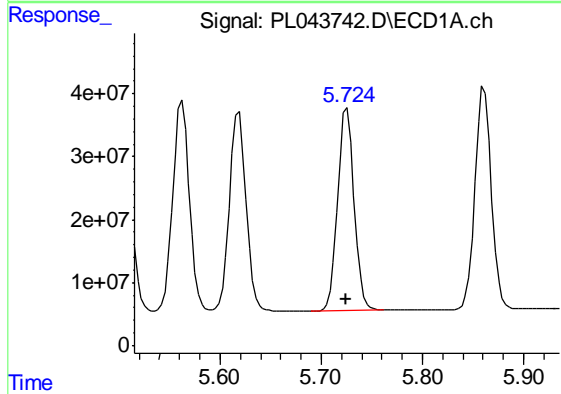


#11 alpha-Chlordane  
R.T.: 5.563 min  
Delta R.T.: 0.000 min  
Response: 384415578  
Conc: 75.06 ng/ml

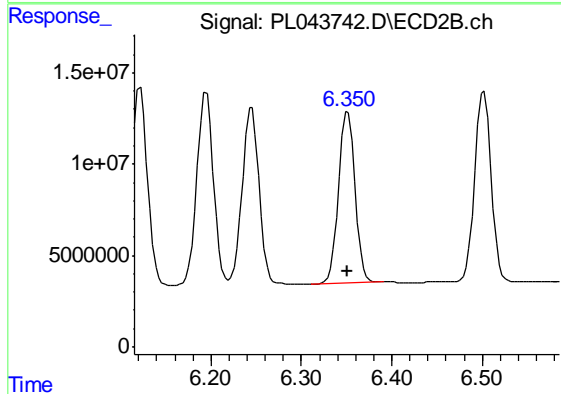
Instrument :  
ECD\_L  
ClientSampleId :  
PSTDICC075



#11 alpha-Chlordane  
R.T.: 6.195 min  
Delta R.T.: 0.001 min  
Response: 132302158  
Conc: 74.19 ng/ml

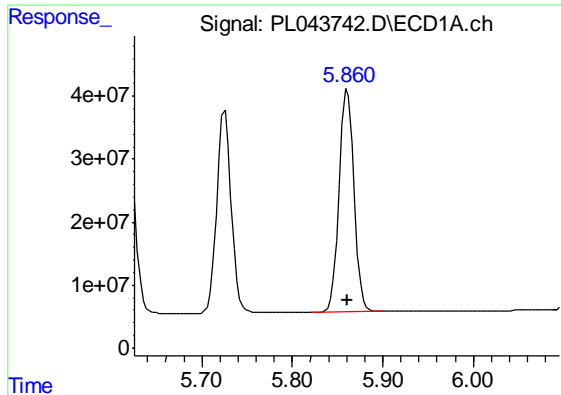


#12 4,4'-DDE  
R.T.: 5.725 min  
Delta R.T.: 0.000 min  
Response: 358091100  
Conc: 76.58 ng/ml



#12 4,4'-DDE  
R.T.: 6.351 min  
Delta R.T.: 0.000 min  
Response: 117208744  
Conc: 75.46 ng/ml

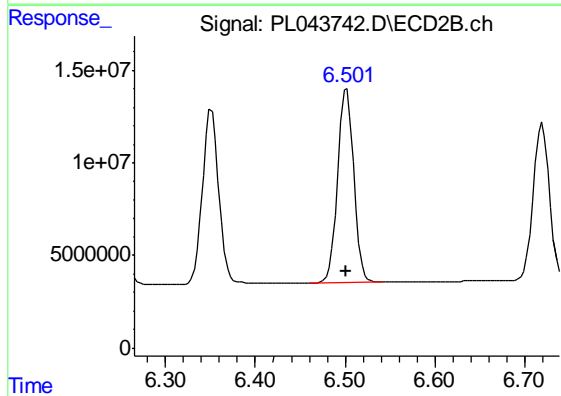




#13 Dieldrin

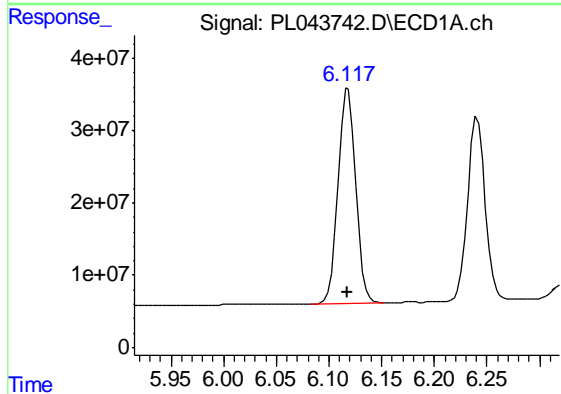
R.T.: 5.861 min  
 Delta R.T.: 0.000 min  
 Response: 398898200  
 Conc: 76.49 ng/ml

Instrument :  
 ECD\_L  
 ClientSampleId :  
 PSTDICC075



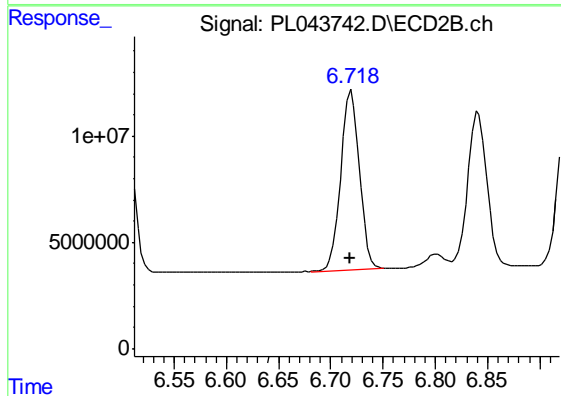
#13 Dieldrin

R.T.: 6.502 min  
 Delta R.T.: 0.001 min  
 Response: 130350666  
 Conc: 75.53 ng/ml



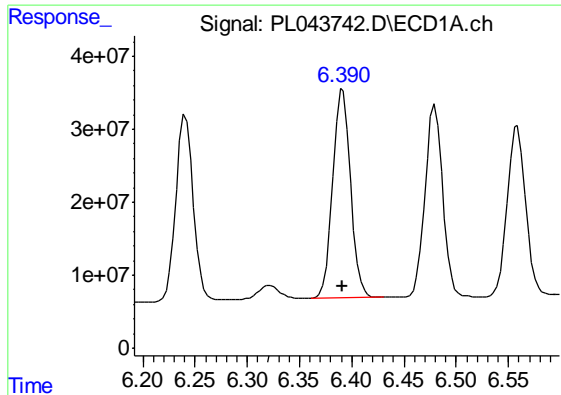
#14 Endrin

R.T.: 6.118 min  
 Delta R.T.: 0.000 min  
 Response: 345080814  
 Conc: 76.68 ng/ml



#14 Endrin

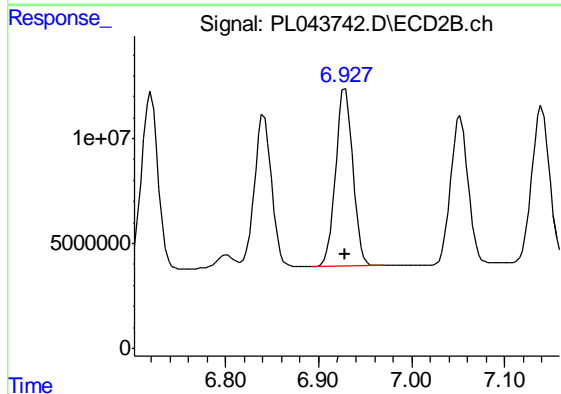
R.T.: 6.720 min  
 Delta R.T.: 0.000 min  
 Response: 105034898  
 Conc: 75.49 ng/ml



#15 Endosulfan II

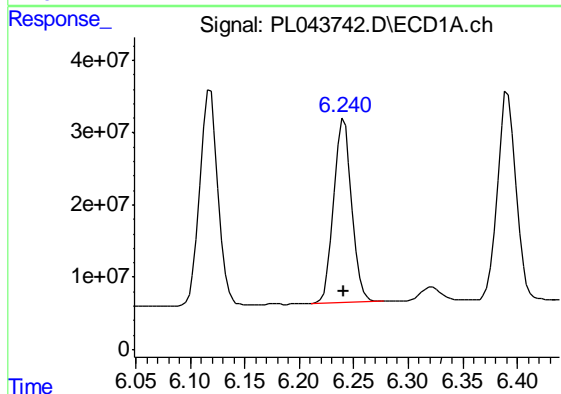
R.T.: 6.391 min  
Delta R.T.: 0.000 min  
Response: 340441914  
Conc: 75.47 ng/ml

Instrument :  
ECD\_L  
ClientSampleId :  
PSTDICC075



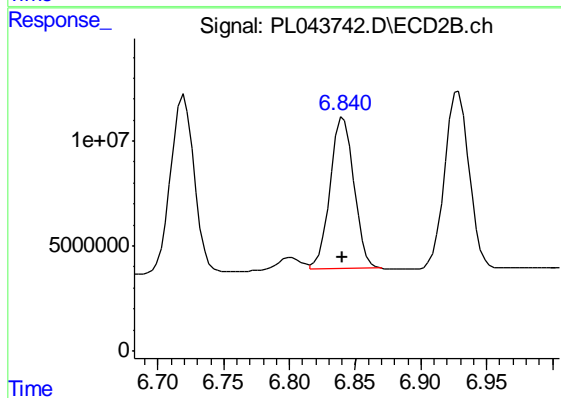
#15 Endosulfan II

R.T.: 6.929 min  
Delta R.T.: 0.000 min  
Response: 109156411  
Conc: 74.63 ng/ml



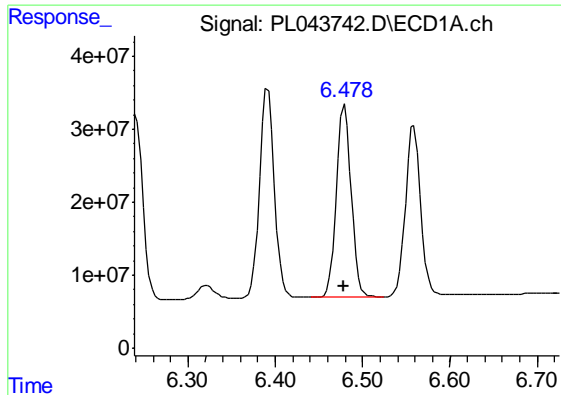
#16 4,4'-DDD

R.T.: 6.241 min  
Delta R.T.: 0.000 min  
Response: 294759224  
Conc: 76.26 ng/ml



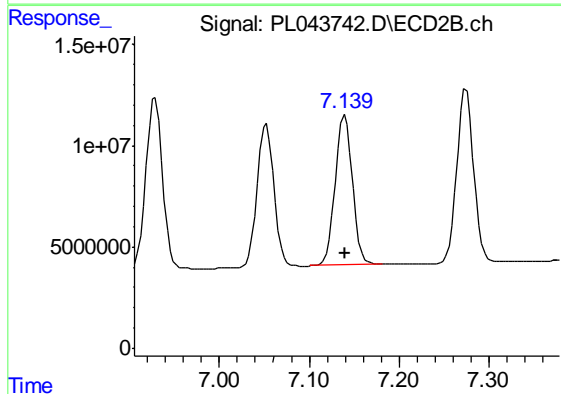
#16 4,4'-DDD

R.T.: 6.841 min  
Delta R.T.: 0.000 min  
Response: 91837935  
Conc: 74.27 ng/ml

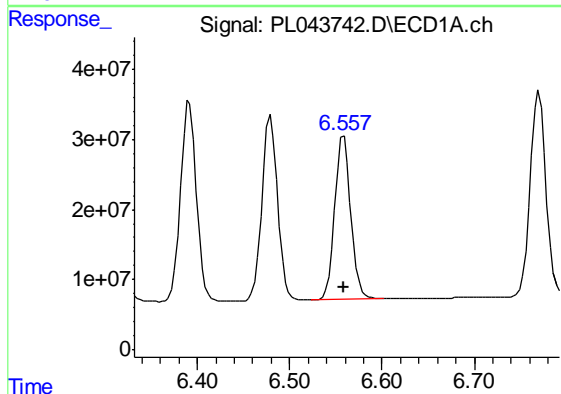


#17 4,4'-DDT  
 R.T.: 6.480 min  
 Delta R.T.: 0.000 min  
 Response: 308959398  
 Conc: 76.92 ng/ml

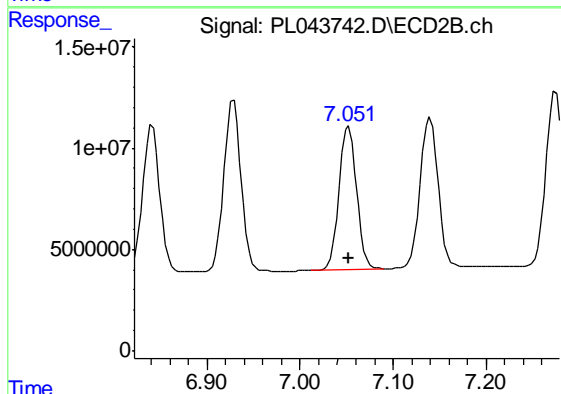
Instrument :  
 ECD\_L  
 ClientSampleId :  
 PSTDICC075



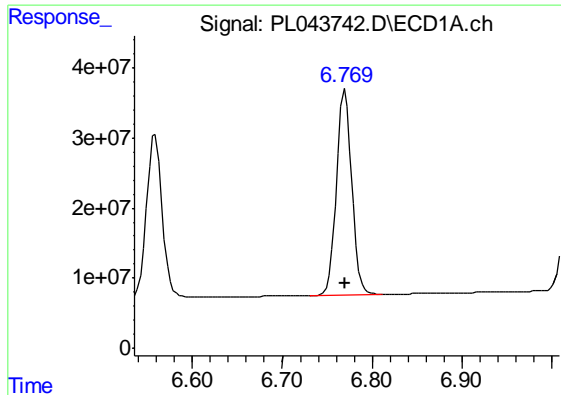
#17 4,4'-DDT  
 R.T.: 7.140 min  
 Delta R.T.: 0.000 min  
 Response: 99079691  
 Conc: 74.39 ng/ml



#18 Endrin aldehyde  
 R.T.: 6.559 min  
 Delta R.T.: 0.000 min  
 Response: 281514844  
 Conc: 74.61 ng/ml



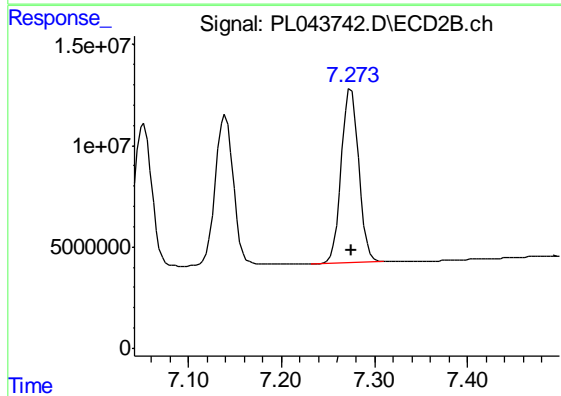
#18 Endrin aldehyde  
 R.T.: 7.052 min  
 Delta R.T.: 0.000 min  
 Response: 92403659  
 Conc: 74.00 ng/ml



#19 Endosulfan Sulfate

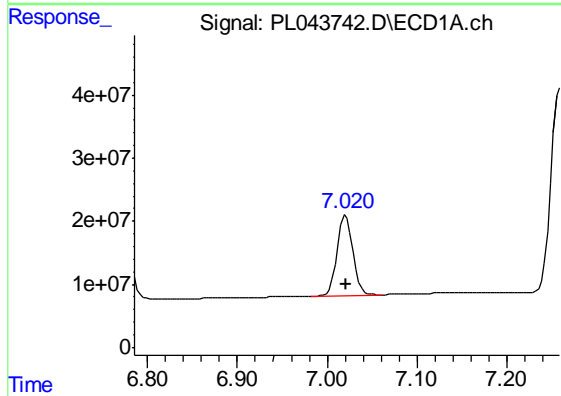
R.T.: 6.770 min  
 Delta R.T.: 0.000 min  
 Response: 346386891  
 Conc: 75.32 ng/ml

Instrument :  
 ECD\_L  
 ClientSampleId :  
 PSTDICC075



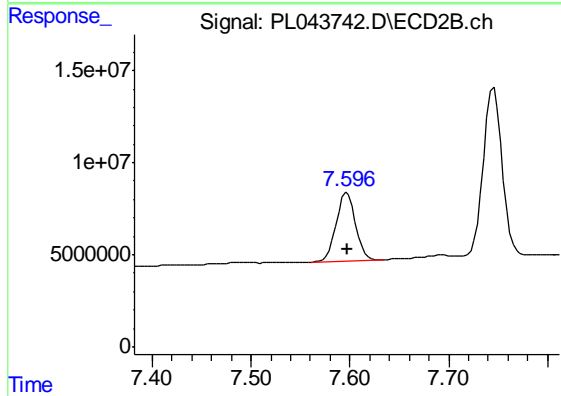
#19 Endosulfan Sulfate

R.T.: 7.275 min  
 Delta R.T.: 0.000 min  
 Response: 111444931  
 Conc: 75.03 ng/ml



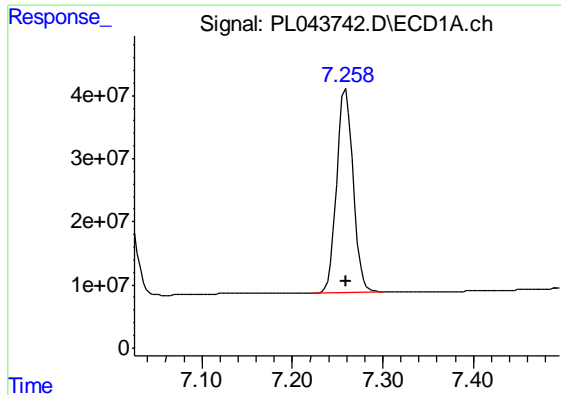
#20 Methoxychlor

R.T.: 7.021 min  
 Delta R.T.: 0.000 min  
 Response: 156248496  
 Conc: 74.72 ng/ml



#20 Methoxychlor

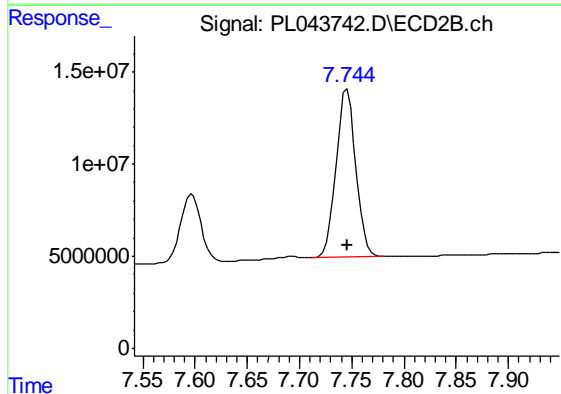
R.T.: 7.597 min  
 Delta R.T.: 0.000 min  
 Response: 49984995  
 Conc: 74.73 ng/ml



#21 Endrin ketone

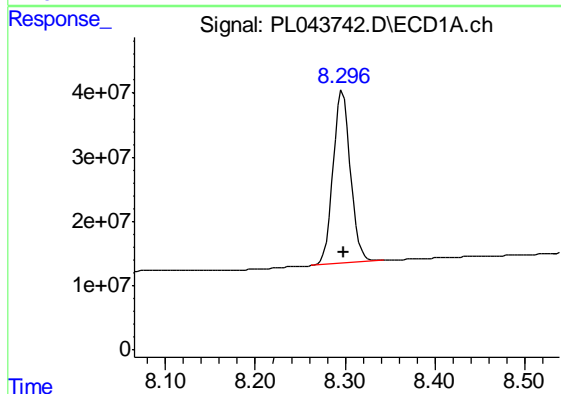
R.T.: 7.259 min  
Delta R.T.: 0.000 min  
Response: 402145389  
Conc: 74.76 ng/ml

Instrument :  
ECD\_L  
ClientSampleId :  
PSTDICC075



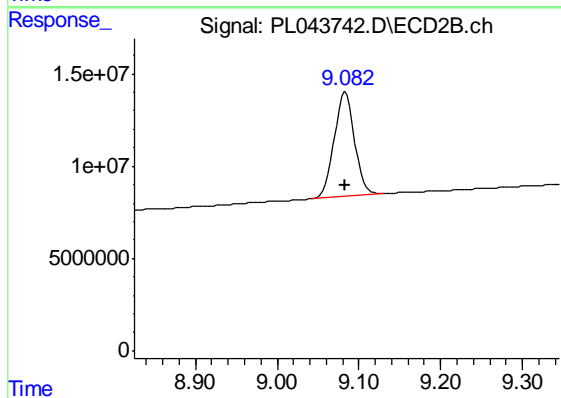
#21 Endrin ketone

R.T.: 7.746 min  
Delta R.T.: 0.000 min  
Response: 120187525  
Conc: 73.74 ng/ml



#28 Decachlorobiphenyl

R.T.: 8.297 min  
Delta R.T.: -0.002 min  
Response: 363852004  
Conc: 73.37 ng/ml



#28 Decachlorobiphenyl

R.T.: 9.084 min  
Delta R.T.: 0.000 min  
Response: 98485751  
Conc: 72.16 ng/ml