

Data Path : Z:\pestpcbsrv\HPCHEM1\ECD\_L\Data\PL011019\  
 Data File : PL043750.D  
 Signal(s) : Signal #1: ECD1A.ch Signal #2: ECD2B.ch  
 Acq On : 10 Jan 2019 14:39  
 Operator : AJ\SJ  
 Sample : PEM  
 Misc :  
 ALS Vial : 3 Sample Multiplier: 1

**Instrument :**  
 ECD\_L  
**ClientSampled :**  
 PEM

**Manual Integrations**  
**APPROVED**  
 Sohil  
 1/11/2019 10:20:04 AM

Integration File signal 1: autoint1.e  
 Integration File signal 2: autoint2.e  
 Quant Time: Jan 10 23:54:04 2019  
 Quant Method : Z:\pestpcbsrv\HPCHEM1\ECD\_L\methods\PL011019.M  
 Quant Title : GC Extractables  
 QLast Update : Thu Jan 10 23:34:12 2019  
 Response via : Initial Calibration  
 Integrator: ChemStation

Volume Inj. : 2 µl  
 Signal #1 Phase : ZB-MR1 Signal #2 Phase: ZB-MR2  
 Signal #1 Info : 30M x 0.32mm x0.5 Signal #2 Info : 30M x 0.32mm x0.25µm

Compound	RT#1	RT#2	Resp#1	Resp#2	ng/ml	ng/ml
-----						
System Monitoring Compounds						
1) SA Tetrachlo...	3.571	4.008	79861706	34881506	20.272	20.960
28) SA Decachlor...	8.304	9.083	99641322	28071815	20.285	20.882
Target Compounds						
2) A alpha-BHC	4.012	4.399	53631445	21291230	8.788	9.437
3) MA gamma-BHC...	4.296	4.685	49841304	21778111	9.097	10.171
6) B beta-BHC	4.548	4.854	24763388	10735316	10.664m	11.876m
12) B 4,4'-DDE	5.732	6.350	10441111	602209	0.235m	0.392m#
14) MA Endrin	6.123	6.719	230.8E6	73922955	53.523m	54.146
16) A 4,4'-DDD	6.247	6.840	3096422	2829603	0.835m	2.274m#
17) MA 4,4'-DDT	6.485	7.140	454.4E6	146.5E6	120.502	108.811
18) B Endrin al...	6.563	7.052	3472495	1413310	0.934m	1.142m
20) A Methoxychlor	7.027	7.597	590.3E6	191.9E6	292.368	289.955
21) B Endrin ke...	7.266	7.744	8247123	3046981	1.591	1.894m
-----						

(f)=RT Delta > 1/2 Window (#)=Amounts differ by > 25% (m)=manual int.

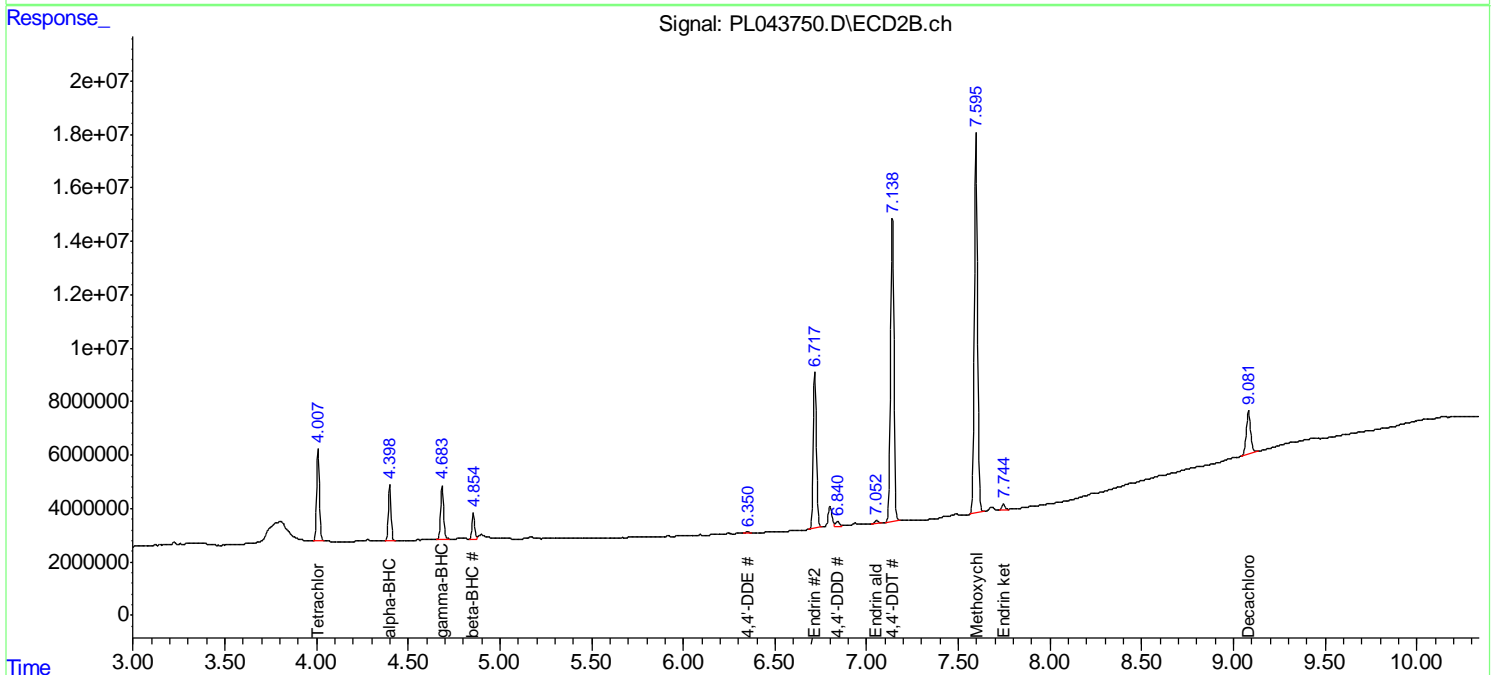
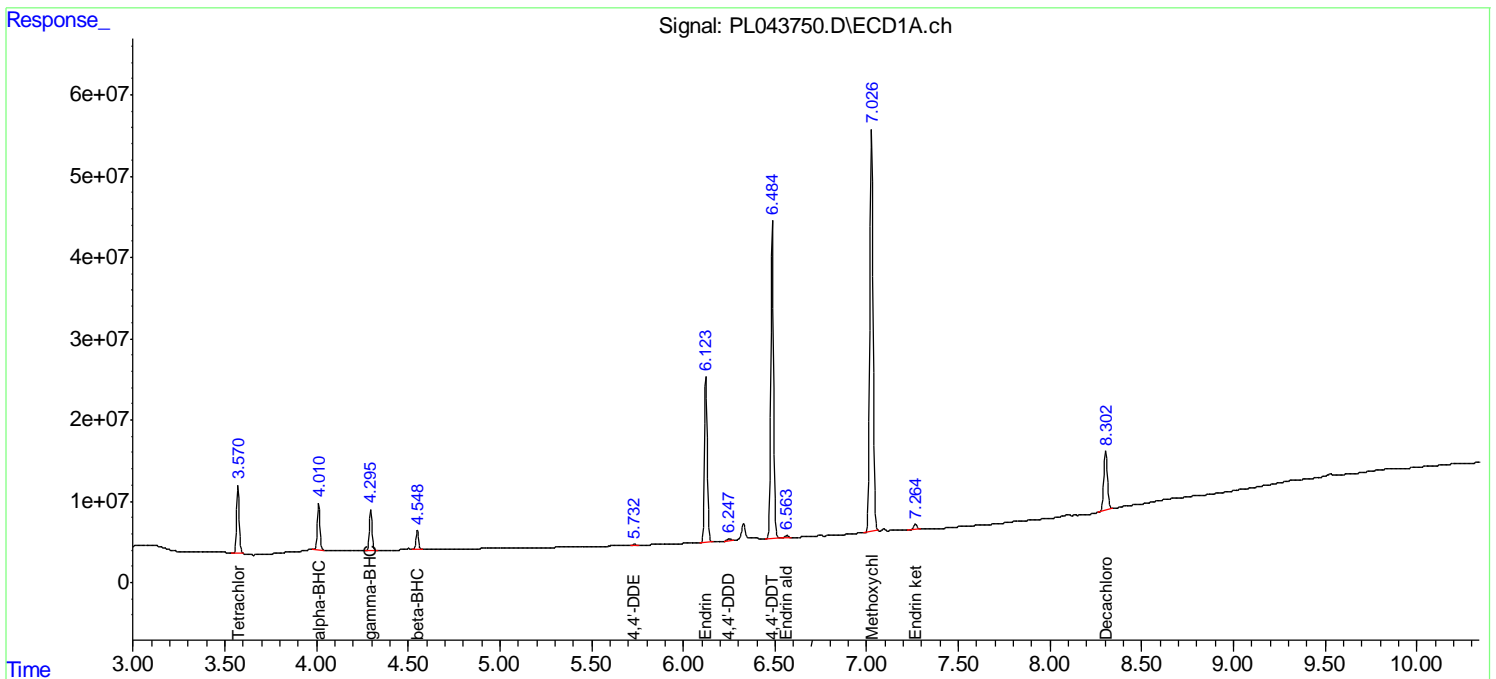
Data Path : Z:\pestpcbsrv\HPCHEM1\ECD\_L\Data\PL011019\  
 Data File : PL043750.D  
 Signal(s) : Signal #1: ECD1A.ch Signal #2: ECD2B.ch  
 Acq On : 10 Jan 2019 14:39  
 Operator : AJ\SJ  
 Sample : PEM  
 Misc :  
 ALS Vial : 3 Sample Multiplier: 1

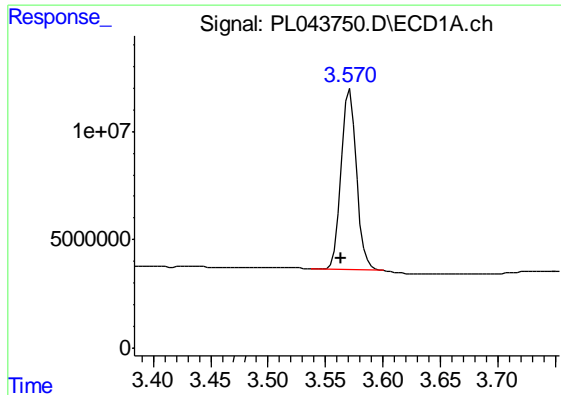
Instrument :  
 ECD\_L  
 ClientSampled :  
 PEM

Manual Integrations  
**APPROVED**  
 Sohil  
 1/11/2019 10:20:04 AM

Integration File signal 1: autoint1.e  
 Integration File signal 2: autoint2.e  
 Quant Time: Jan 10 23:54:04 2019  
 Quant Method : Z:\pestpcbsrv\HPCHEM1\ECD\_L\methods\PL011019.M  
 Quant Title : GC Extractables  
 QLast Update : Thu Jan 10 23:34:12 2019  
 Response via : Initial Calibration  
 Integrator: ChemStation

Volume Inj. : 2 µl  
 Signal #1 Phase : ZB-MR1 Signal #2 Phase: ZB-MR2  
 Signal #1 Info : 30M x 0.32mm x0.5 Signal #2 Info : 30M x 0.32mm x0.25µm





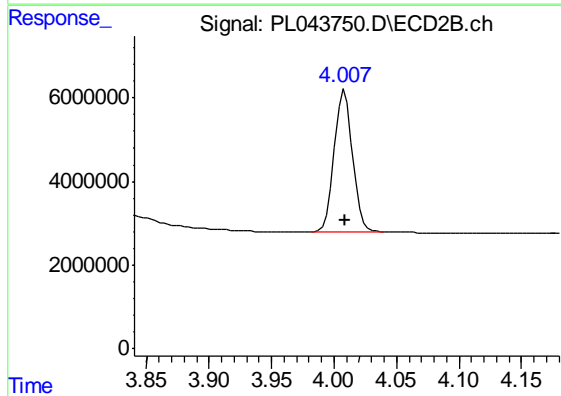
#1 Tetrachloro-m-xylene

R.T.: 3.571 min  
Delta R.T.: 0.007 min  
Response: 79861706  
Conc: 20.27 ng/ml

Instrument :  
ECD\_L  
ClientSampled :  
PEM

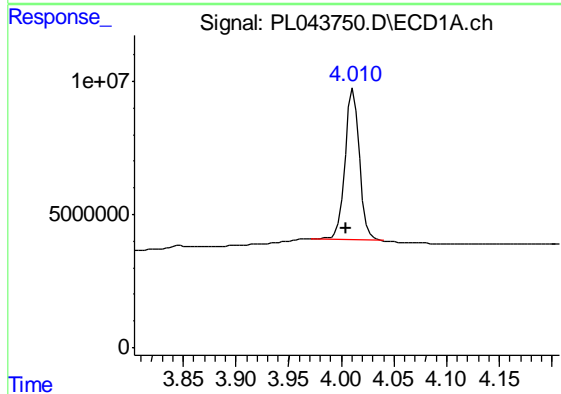
Manual Integrations  
APPROVED

Sohil  
1/11/2019 10:20:04 AM



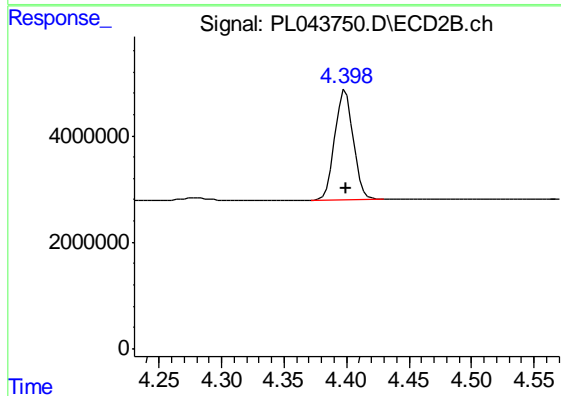
#1 Tetrachloro-m-xylene

R.T.: 4.008 min  
Delta R.T.: 0.000 min  
Response: 34881506  
Conc: 20.96 ng/ml



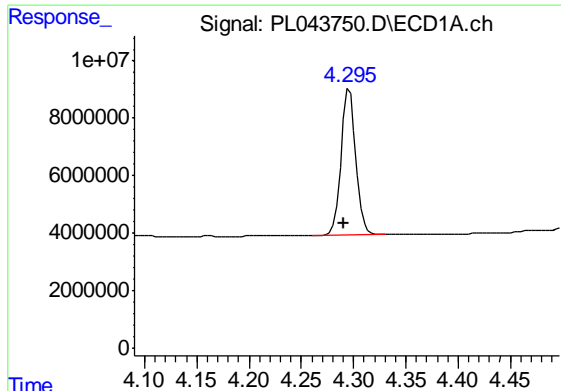
#2 alpha-BHC

R.T.: 4.012 min  
Delta R.T.: 0.007 min  
Response: 53631445  
Conc: 8.79 ng/ml



#2 alpha-BHC

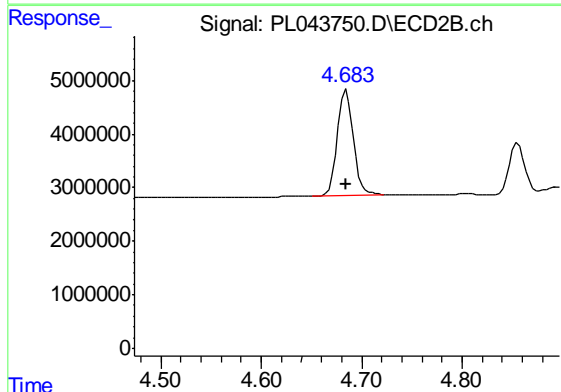
R.T.: 4.399 min  
Delta R.T.: 0.000 min  
Response: 21291230  
Conc: 9.44 ng/ml



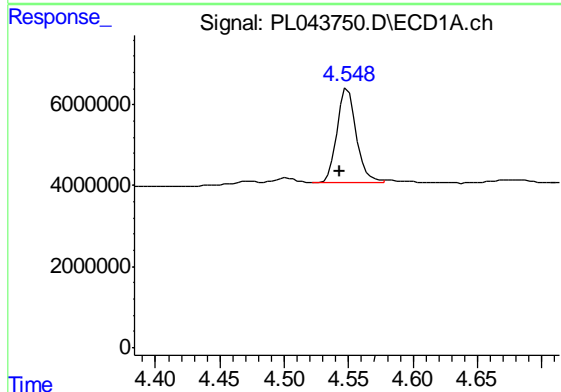
#3 gamma-BHC (Lindane)  
 R.T.: 4.296 min  
 Delta R.T.: 0.006 min  
 Response: 49841304  
 Conc: 9.10 ng/ml

Instrument :  
 ECD\_L  
 ClientSampled :  
 PEM

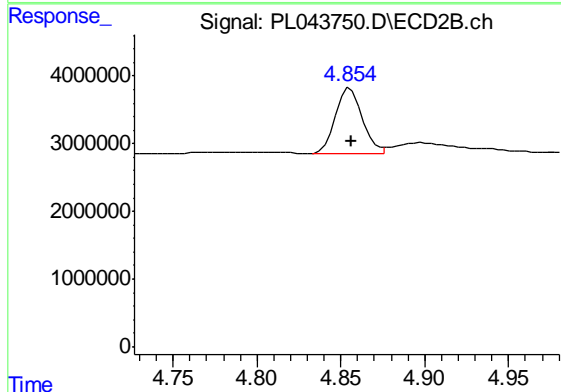
Manual Integrations  
 APPROVED  
 Sohil  
 1/11/2019 10:20:04 AM



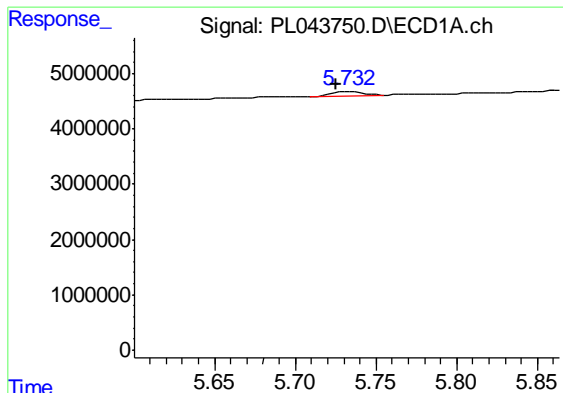
#3 gamma-BHC (Lindane)  
 R.T.: 4.685 min  
 Delta R.T.: 0.000 min  
 Response: 21778111  
 Conc: 10.17 ng/ml



#6 beta-BHC  
 R.T.: 4.548 min  
 Delta R.T.: 0.005 min  
 Response: 24763388  
 Conc: 10.66 ng/ml m



#6 beta-BHC  
 R.T.: 4.854 min  
 Delta R.T.: -0.002 min  
 Response: 10735316  
 Conc: 11.88 ng/ml m



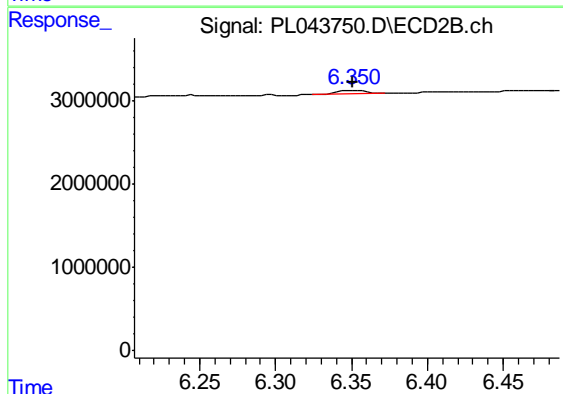
#12 4,4'-DDE

R.T.: 5.732 min  
 Delta R.T.: 0.007 min  
 Response: 1044111  
 Conc: 0.24 ng/ml m

Instrument :  
 ECD\_L  
 ClientSampled :  
 PEM

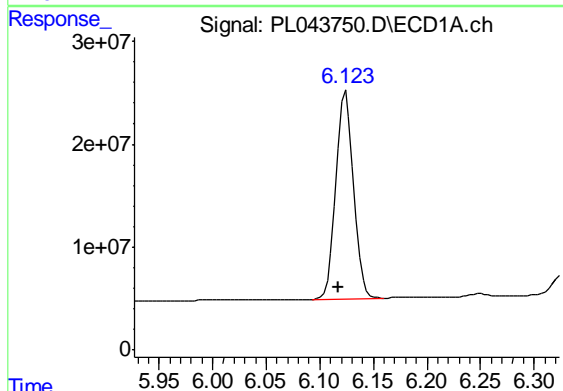
Manual Integrations  
 APPROVED

Sohil  
 1/11/2019 10:20:04 AM



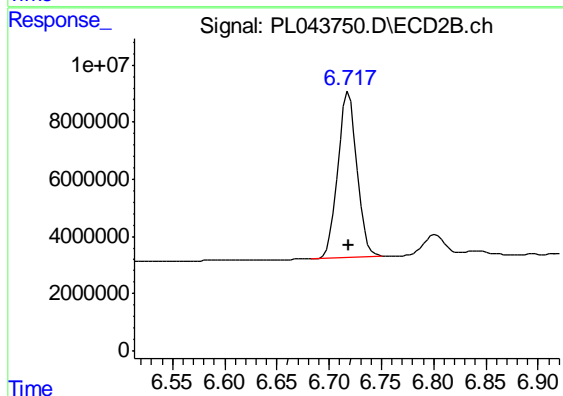
#12 4,4'-DDE

R.T.: 6.350 min  
 Delta R.T.: 0.000 min  
 Response: 602209  
 Conc: 0.39 ng/ml m



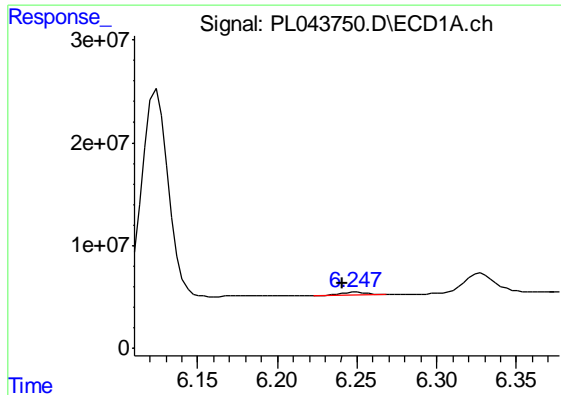
#14 Endrin

R.T.: 6.123 min  
 Delta R.T.: 0.006 min  
 Response: 230831448  
 Conc: 53.52 ng/ml m



#14 Endrin

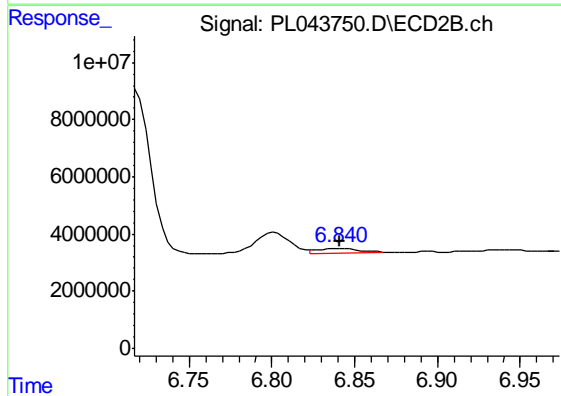
R.T.: 6.719 min  
 Delta R.T.: 0.000 min  
 Response: 73922955  
 Conc: 54.15 ng/ml



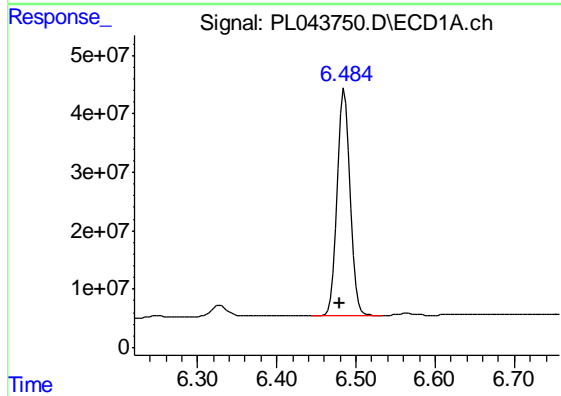
#16 4,4'-DDD  
 R.T.: 6.247 min  
 Delta R.T.: 0.006 min  
 Response: 3096422  
 Conc: 0.83 ng/ml m

Instrument :  
 ECD\_L  
 ClientSampled :  
 PEM

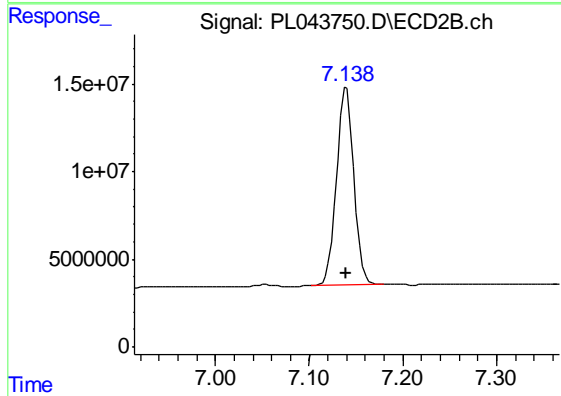
Manual Integrations  
 APPROVED  
 Sohil  
 1/11/2019 10:20:04 AM



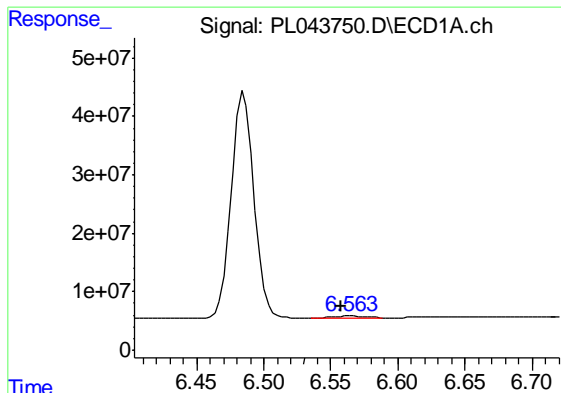
#16 4,4'-DDD  
 R.T.: 6.840 min  
 Delta R.T.: 0.000 min  
 Response: 2829603  
 Conc: 2.27 ng/ml m



#17 4,4'-DDT  
 R.T.: 6.485 min  
 Delta R.T.: 0.006 min  
 Response: 454358899  
 Conc: 120.50 ng/ml



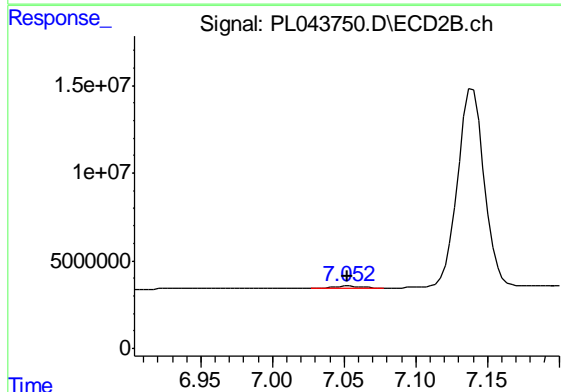
#17 4,4'-DDT  
 R.T.: 7.140 min  
 Delta R.T.: 0.000 min  
 Response: 146463449  
 Conc: 108.81 ng/ml



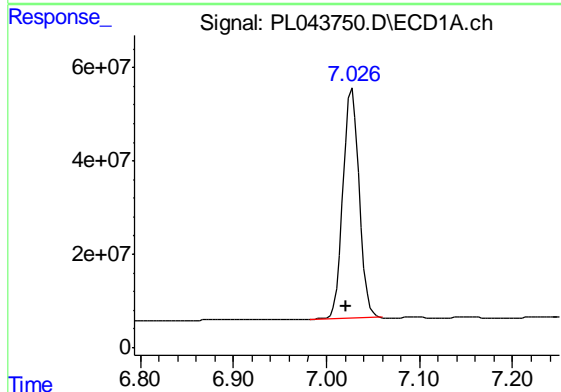
#18 Endrin aldehyde  
 R.T.: 6.563 min  
 Delta R.T.: 0.005 min  
 Response: 3472495  
 Conc: 0.93 ng/ml m

Instrument :  
 ECD\_L  
 ClientSampled :  
 PEM

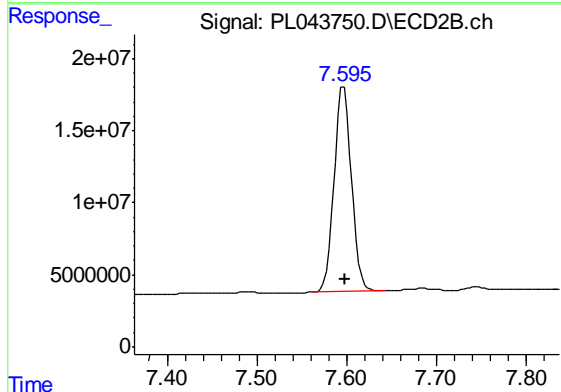
Manual Integrations  
 APPROVED  
 Sohil  
 1/11/2019 10:20:04 AM



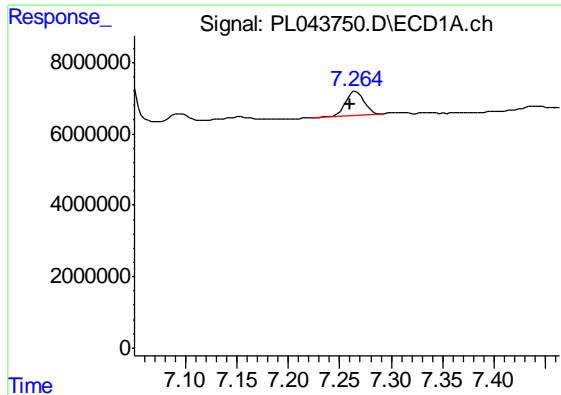
#18 Endrin aldehyde  
 R.T.: 7.052 min  
 Delta R.T.: 0.000 min  
 Response: 1413310  
 Conc: 1.14 ng/ml m



#20 Methoxychlor  
 R.T.: 7.027 min  
 Delta R.T.: 0.006 min  
 Response: 590296653  
 Conc: 292.37 ng/ml



#20 Methoxychlor  
 R.T.: 7.597 min  
 Delta R.T.: -0.001 min  
 Response: 191882221  
 Conc: 289.95 ng/ml



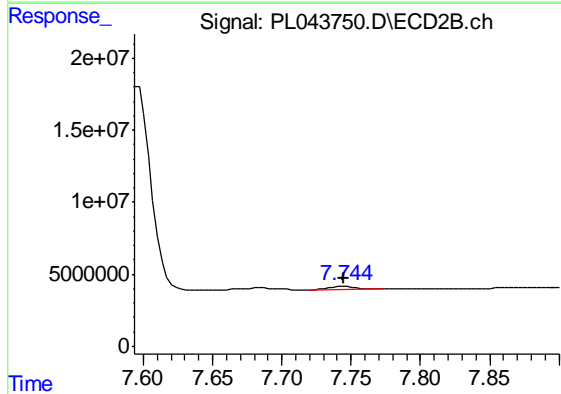
#21 Endrin ketone

R.T.: 7.266 min  
 Delta R.T.: 0.006 min  
 Response: 8247123  
 Conc: 1.59 ng/ml

Instrument :  
 ECD\_L  
 ClientSampled :  
 PEM

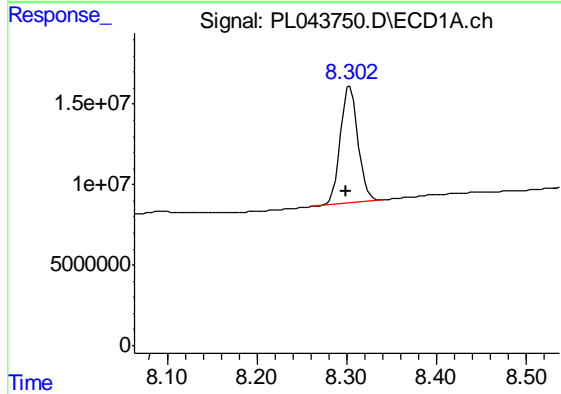
Manual Integrations  
 APPROVED

Sohil  
 1/11/2019 10:20:04 AM



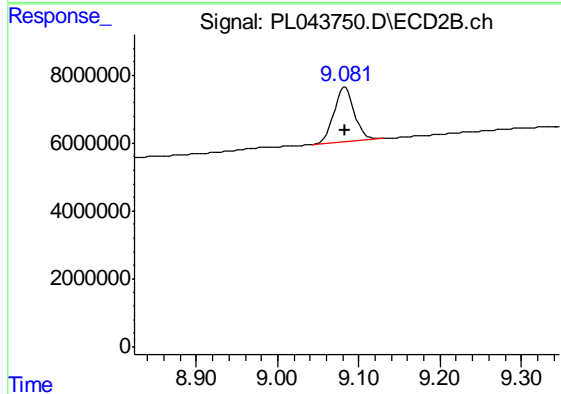
#21 Endrin ketone

R.T.: 7.744 min  
 Delta R.T.: 0.000 min  
 Response: 3046981  
 Conc: 1.89 ng/ml m



#28 Decachlorobiphenyl

R.T.: 8.304 min  
 Delta R.T.: 0.005 min  
 Response: 99641322  
 Conc: 20.28 ng/ml



#28 Decachlorobiphenyl

R.T.: 9.083 min  
 Delta R.T.: 0.000 min  
 Response: 28071815  
 Conc: 20.88 ng/ml