

Data Path : Z:\pestpcbsrv\HPCHEM1\ECD_L\Data\PL011019\
 Data File : PL043751.D
 Signal(s) : Signal #1: ECD1A.ch Signal #2: ECD2B.ch
 Acq On : 10 Jan 2019 14:53
 Operator : AJ\SJ
 Sample : PSTDCCC050
 Misc :
 ALS Vial : 4 Sample Multiplier: 1

Instrument :
 ECD_L
ClientSampleId :
 PSTDCCC050

Manual Integrations
APPROVED
 Sohil
 1/11/2019 10:20:06 AM

Integration File signal 1: autoint1.e
 Integration File signal 2: autoint2.e
 Quant Time: Jan 10 23:54:16 2019
 Quant Method : Z:\pestpcbsrv\HPCHEM1\ECD_L\methods\PL011019.M
 Quant Title : GC Extractables
 QLast Update : Thu Jan 10 23:34:12 2019
 Response via : Initial Calibration
 Integrator: ChemStation

Volume Inj. : 2 µl
 Signal #1 Phase : ZB-MR1 Signal #2 Phase: ZB-MR2
 Signal #1 Info : 30M x 0.32mm x0.5 Signal #2 Info : 30M x 0.32mm x0.25µm

Compound	RT#1	RT#2	Resp#1	Resp#2	ng/ml	ng/ml

System Monitoring Compounds						
1) SA Tetrachlo...	3.568	4.008	209.4E6	87749162	53.164	52.727
28) SA Decachlor...	8.301	9.083	240.5E6	68583106	48.963	51.017
Target Compounds						
2) A alpha-BHC	4.009	4.399	333.9E6	122.0E6	54.706	54.087
3) MA gamma-BHC...	4.294	4.685	300.3E6	112.5E6	54.815	52.531
4) MA Heptachlor	4.591	5.193	281.2E6	103.6E6	53.805	53.955m
5) MB Aldrin	4.840	5.500	291.9E6	103.0E6	54.423	53.353
6) B beta-BHC	4.547	4.856	121.0E6	47645255	52.093	52.706
7) B delta-BHC	4.751	5.073	278.8E6	100.2E6	55.169	53.927
8) B Heptachlor...	5.284	5.887	264.9E6	95522720	52.963	52.610
9) A Endosulfan I	5.623	6.244	244.1E6	86682104	52.801	52.012
10) B gamma-Chl...	5.509	6.121	268.1E6	95294074	52.801	52.808
11) B alpha-Chl...	5.567	6.194	261.3E6	93544954	52.540	52.648
12) B 4,4'-DDE	5.729	6.351	234.8E6	80923969	52.893	52.649
13) MA Dieldrin	5.865	6.501	263.3E6	90584567	52.804	53.292
14) MA Endrin	6.120	6.719	224.4E6	72914714	52.038m	53.407
15) B Endosulfa...	6.395	6.928	225.0E6	77690244	51.478	53.713
16) A 4,4'-DDD	6.245	6.840	191.2E6	64865637	51.529	52.119
17) MA 4,4'-DDT	6.482	7.139	198.6E6	68370068	52.681	50.794
18) B Endrin al...	6.562	7.052	187.6E6	65871037	50.495	53.247
19) B Endosulfa...	6.773	7.274	228.5E6	77776878	51.256	53.050
20) A Methoxychlor	7.024	7.597	102.7E6	34941593	50.869	52.801
21) B Endrin ke...	7.263	7.745	267.3E6	83031092	51.563	51.624

(f)=RT Delta > 1/2 Window (#)=Amounts differ by > 25% (m)=manual int.

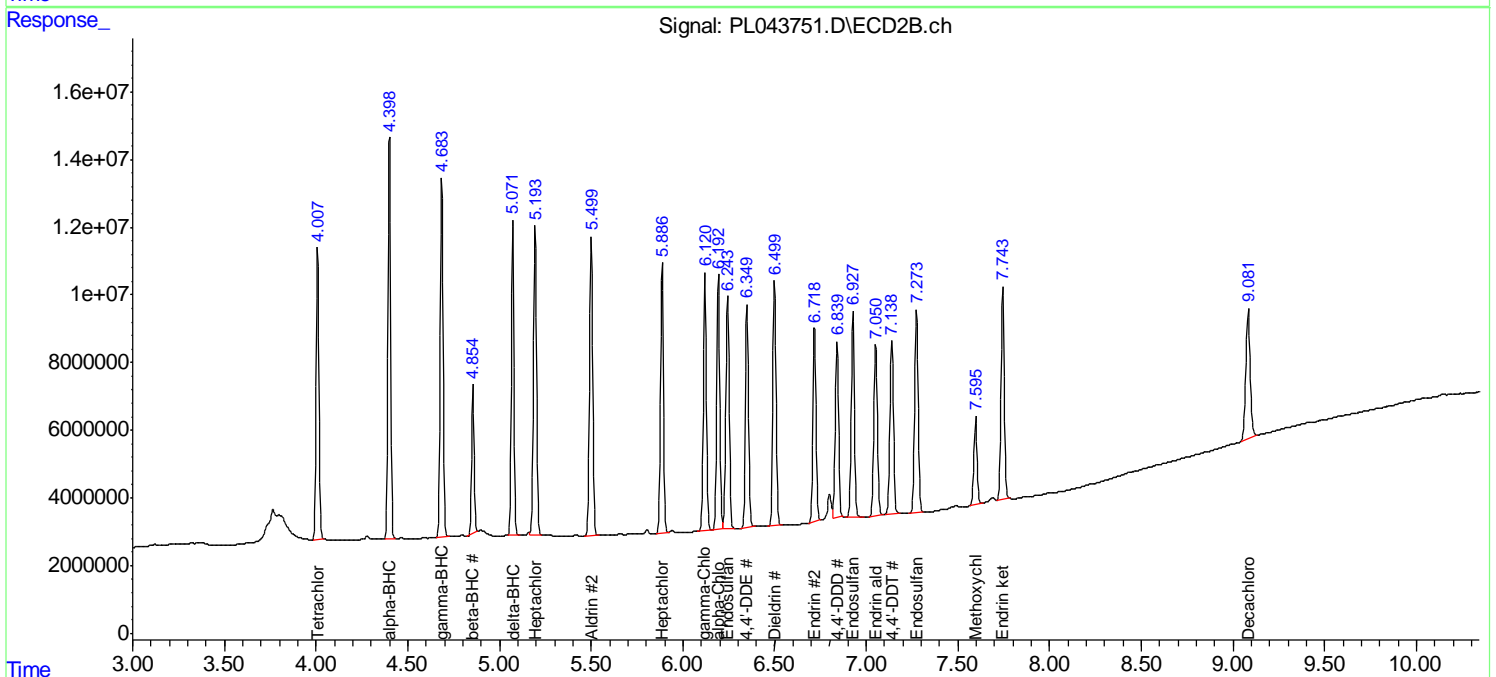
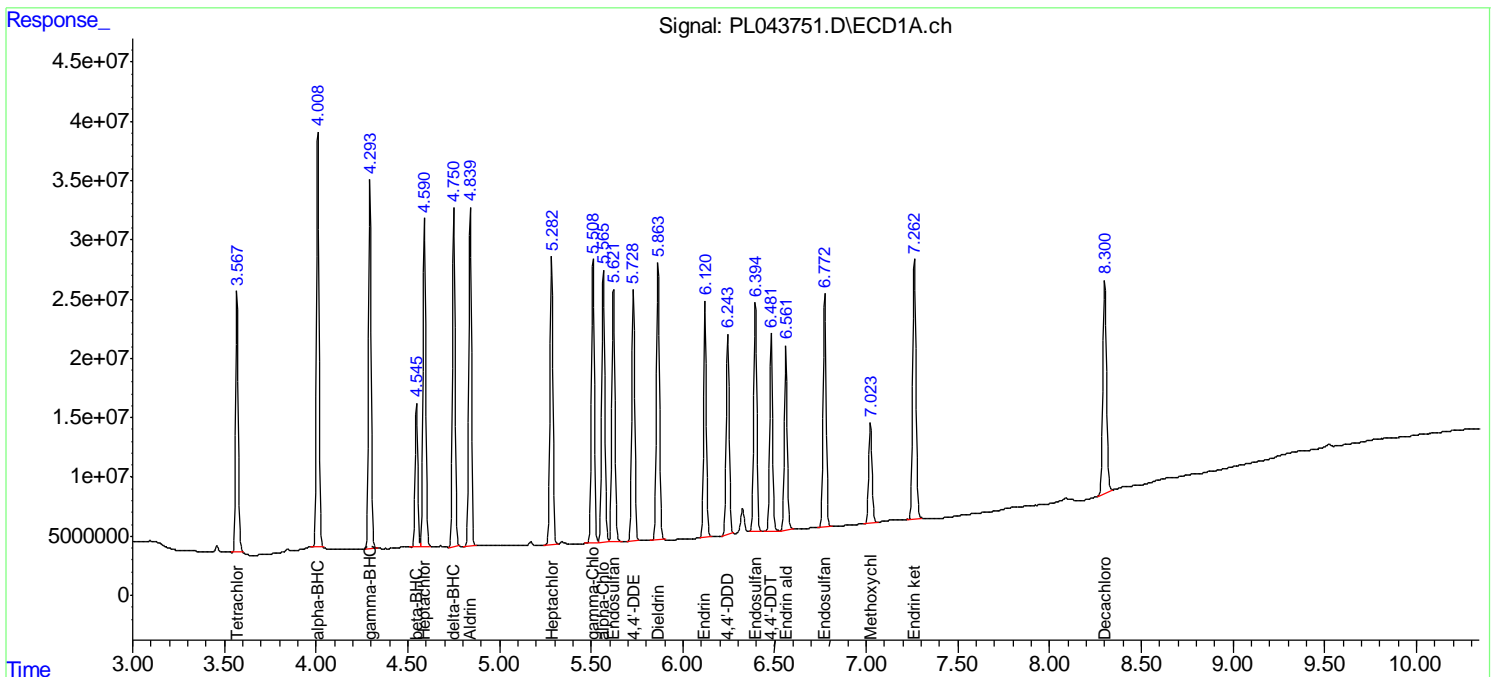
Data Path : Z:\pestpcbsrv\HPCHEM1\ECD_L\Data\PL011019\
 Data File : PL043751.D
 Signal(s) : Signal #1: ECD1A.ch Signal #2: ECD2B.ch
 Acq On : 10 Jan 2019 14:53
 Operator : AJ\SJ
 Sample : PSTDCCC050
 Misc :
 ALS Vial : 4 Sample Multiplier: 1

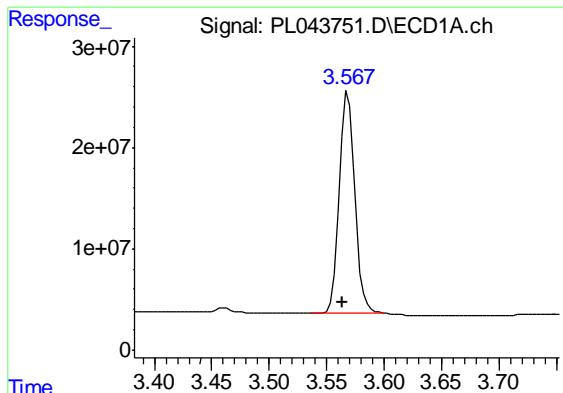
Instrument :
 ECD_L
Client Sampled :
 PSTDCCC050

Manual Integrations
APPROVED
 Sohil
 1/11/2019 10:20:06 AM

Integration File signal 1: autoint1.e
 Integration File signal 2: autoint2.e
 Quant Time: Jan 10 23:54:16 2019
 Quant Method : Z:\pestpcbsrv\HPCHEM1\ECD_L\methods\PL011019.M
 Quant Title : GC Extractables
 QLast Update : Thu Jan 10 23:34:12 2019
 Response via : Initial Calibration
 Integrator: ChemStation

Volume Inj. : 2 µl
 Signal #1 Phase : ZB-MR1 Signal #2 Phase: ZB-MR2
 Signal #1 Info : 30M x 0.32mm x0.5 Signal #2 Info : 30M x 0.32mm x0.25µm





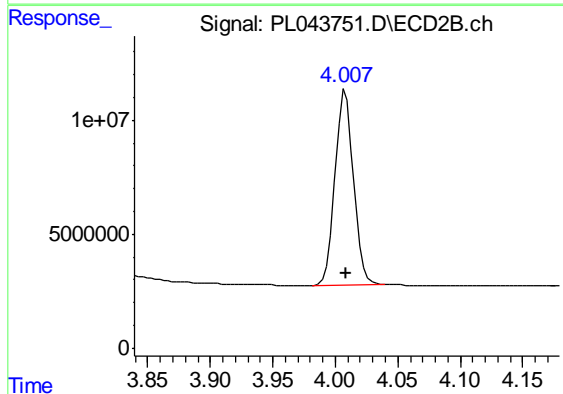
#1 Tetrachloro-m-xylene

R.T.: 3.568 min
 Delta R.T.: 0.004 min
 Response: 209436164
 Conc: 53.16 ng/ml

Instrument :
 ECD_L
 ClientSampled :
 PSTDCCC050

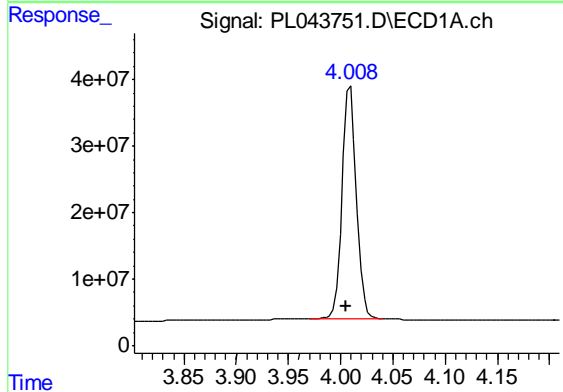
Manual Integrations
 APPROVED

Sohil
 1/11/2019 10:20:06 AM



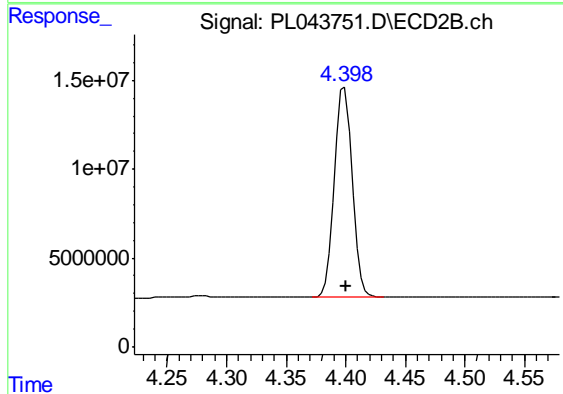
#1 Tetrachloro-m-xylene

R.T.: 4.008 min
 Delta R.T.: 0.000 min
 Response: 87749162
 Conc: 52.73 ng/ml



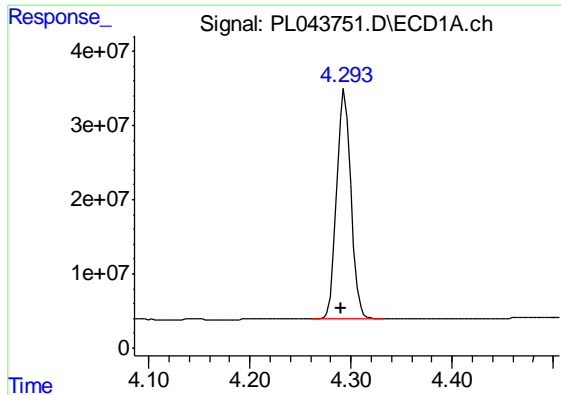
#2 alpha-BHC

R.T.: 4.009 min
 Delta R.T.: 0.004 min
 Response: 333879222
 Conc: 54.71 ng/ml



#2 alpha-BHC

R.T.: 4.399 min
 Delta R.T.: 0.000 min
 Response: 122032965
 Conc: 54.09 ng/ml



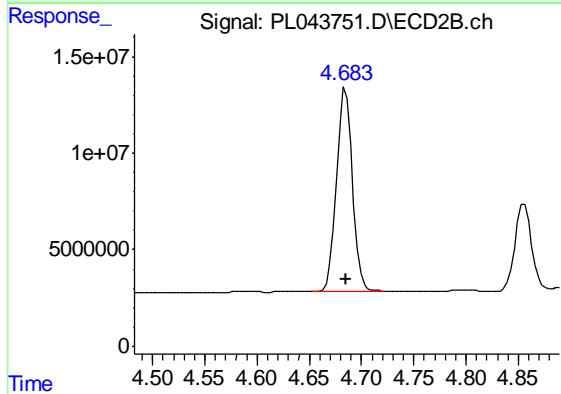
#3 gamma-BHC (Lindane)

R.T.: 4.294 min
 Delta R.T.: 0.004 min
 Response: 300317757
 Conc: 54.81 ng/ml

Instrument :
 ECD_L
 ClientSampled :
 PSTDCCC050

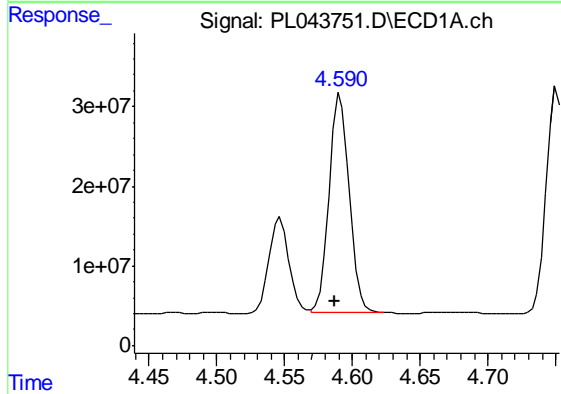
Manual Integrations
 APPROVED

Sohil
 1/11/2019 10:20:06 AM



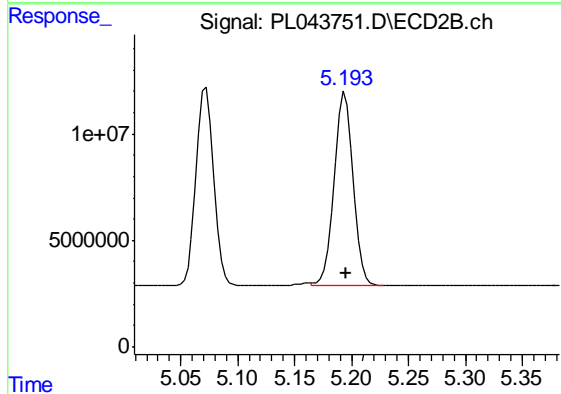
#3 gamma-BHC (Lindane)

R.T.: 4.685 min
 Delta R.T.: 0.000 min
 Response: 112483437
 Conc: 52.53 ng/ml



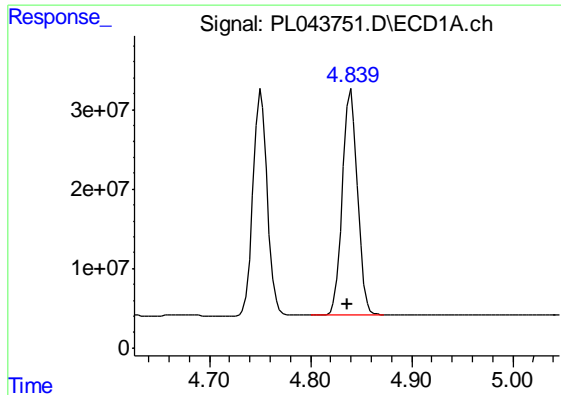
#4 Heptachlor

R.T.: 4.591 min
 Delta R.T.: 0.004 min
 Response: 281229971
 Conc: 53.80 ng/ml



#4 Heptachlor

R.T.: 5.193 min
 Delta R.T.: -0.002 min
 Response: 103608037
 Conc: 53.95 ng/ml m



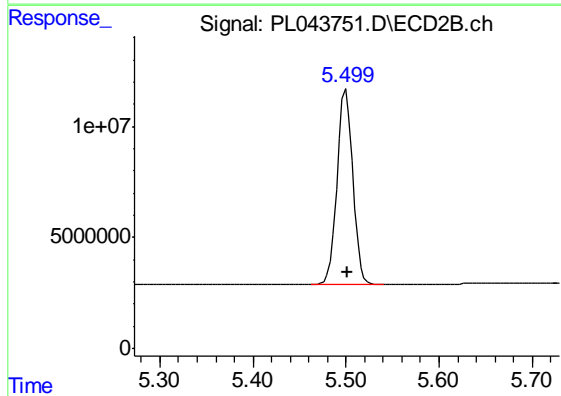
#5 Aldrin

R.T.: 4.840 min
 Delta R.T.: 0.004 min
 Response: 291894985
 Conc: 54.42 ng/ml

Instrument :
 ECD_L
 ClientSampled :
 PSTDCCC050

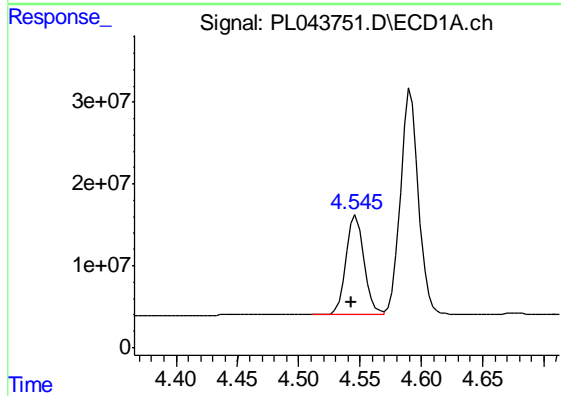
Manual Integrations
 APPROVED

Sohil
 1/11/2019 10:20:06 AM



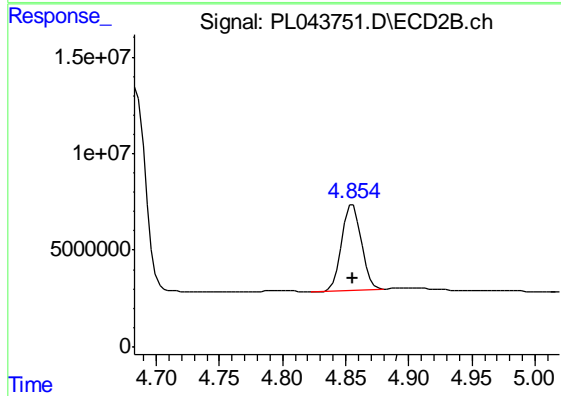
#5 Aldrin

R.T.: 5.500 min
 Delta R.T.: 0.000 min
 Response: 103034334
 Conc: 53.35 ng/ml



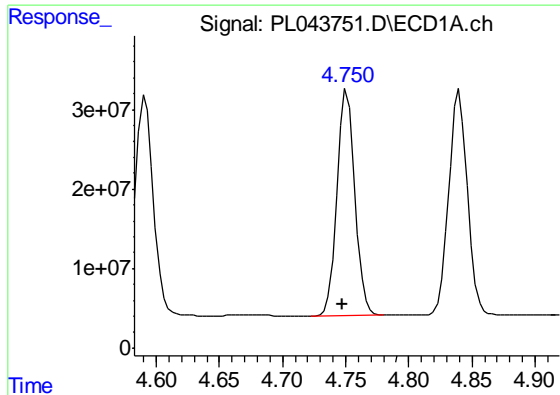
#6 beta-BHC

R.T.: 4.547 min
 Delta R.T.: 0.004 min
 Response: 120968254
 Conc: 52.09 ng/ml



#6 beta-BHC

R.T.: 4.856 min
 Delta R.T.: 0.000 min
 Response: 47645255
 Conc: 52.71 ng/ml



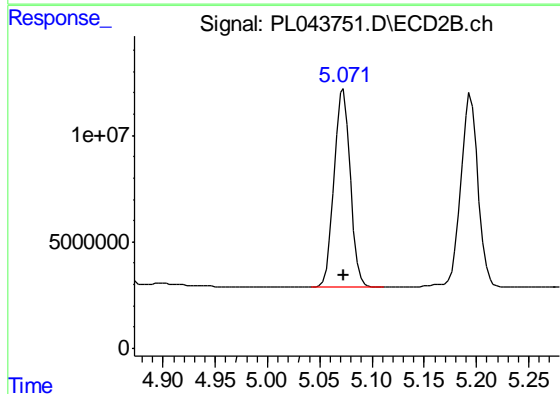
#7 delta-BHC

R.T.: 4.751 min
Delta R.T.: 0.004 min
Response: 278760492
Conc: 55.17 ng/ml

Instrument :
ECD_L
ClientSampled :
PSTDCCC050

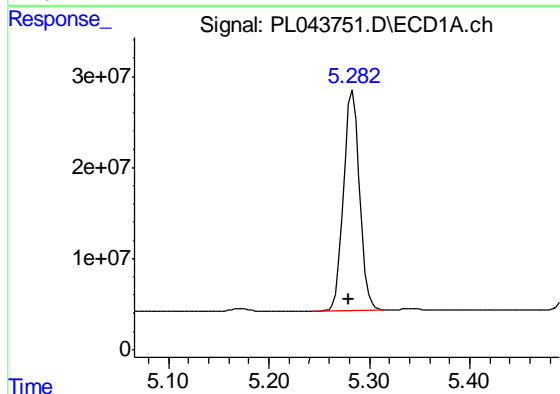
Manual Integrations
APPROVED

Sohil
1/11/2019 10:20:06 AM



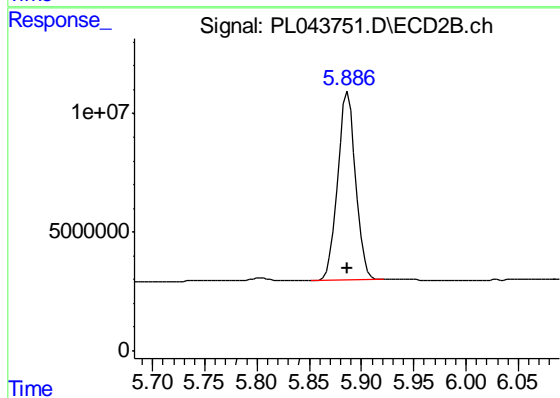
#7 delta-BHC

R.T.: 5.073 min
Delta R.T.: 0.000 min
Response: 100242763
Conc: 53.93 ng/ml



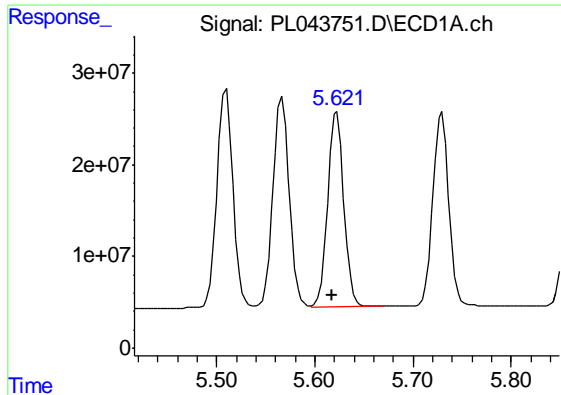
#8 Heptachlor epoxide

R.T.: 5.284 min
Delta R.T.: 0.005 min
Response: 264888008
Conc: 52.96 ng/ml



#8 Heptachlor epoxide

R.T.: 5.887 min
Delta R.T.: 0.000 min
Response: 95522720
Conc: 52.61 ng/ml



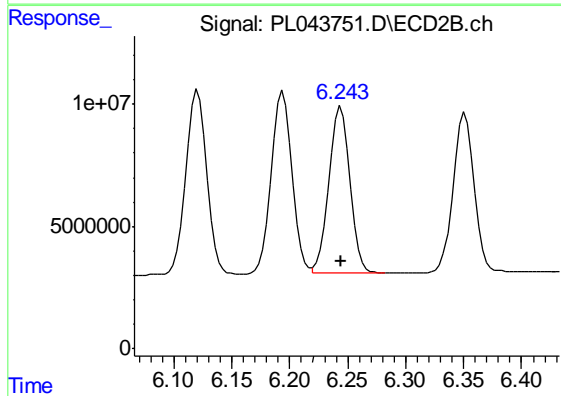
#9 Endosulfan I

R.T.: 5.623 min
 Delta R.T.: 0.005 min
 Response: 244142330
 Conc: 52.80 ng/ml

Instrument :
 ECD_L
 ClientSampled :
 PSTDCCC050

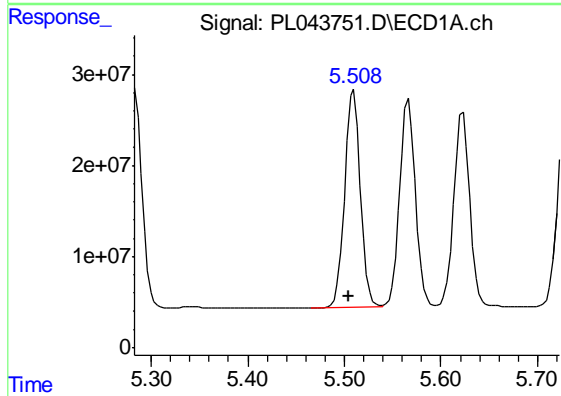
Manual Integrations
 APPROVED

Sohil
 1/11/2019 10:20:06 AM



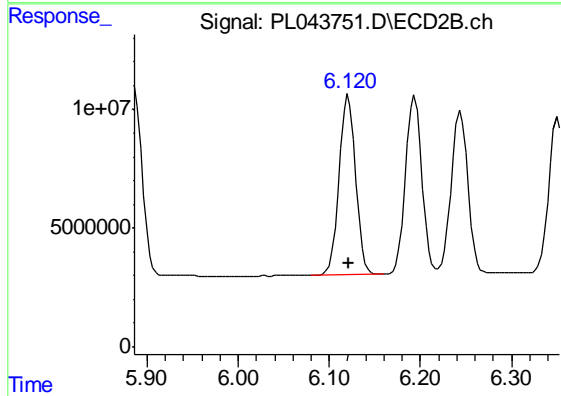
#9 Endosulfan I

R.T.: 6.244 min
 Delta R.T.: 0.000 min
 Response: 86682104
 Conc: 52.01 ng/ml



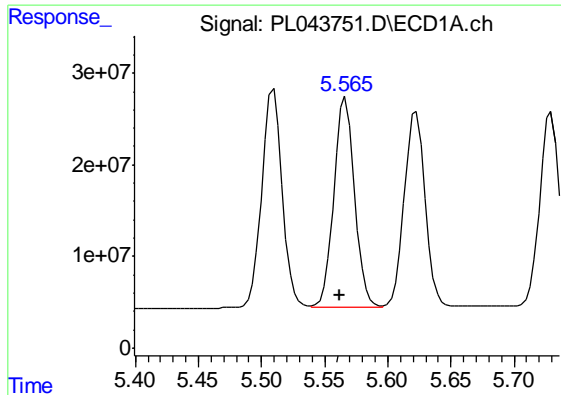
#10 gamma-Chlordane

R.T.: 5.509 min
 Delta R.T.: 0.004 min
 Response: 268074483
 Conc: 52.80 ng/ml



#10 gamma-Chlordane

R.T.: 6.121 min
 Delta R.T.: 0.000 min
 Response: 95294074
 Conc: 52.81 ng/ml



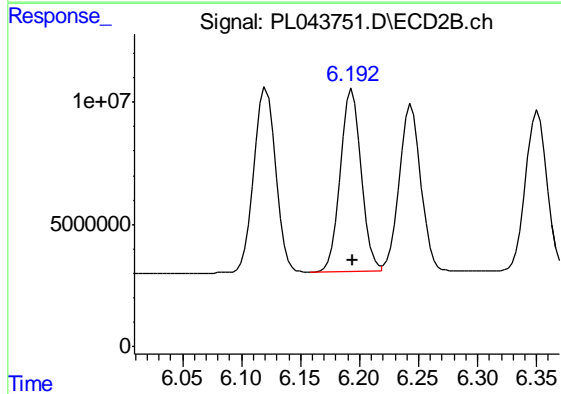
#11 alpha-Chlordane

R.T.: 5.567 min
 Delta R.T.: 0.005 min
 Response: 261284017
 Conc: 52.54 ng/ml

Instrument :
 ECD_L
 ClientSampled :
 PSTDCCC050

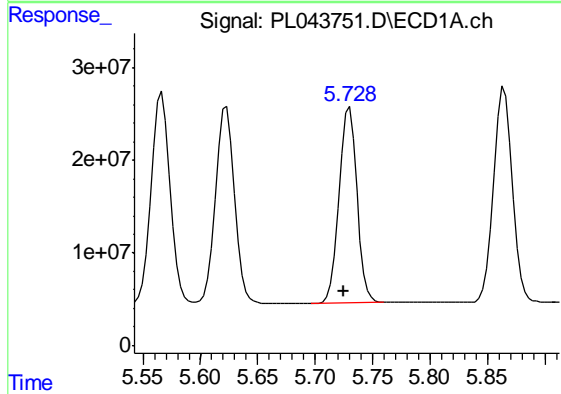
Manual Integrations
 APPROVED

Sohil
 1/11/2019 10:20:06 AM



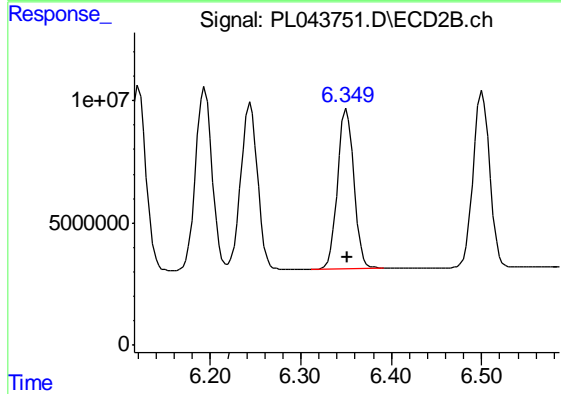
#11 alpha-Chlordane

R.T.: 6.194 min
 Delta R.T.: 0.000 min
 Response: 93544954
 Conc: 52.65 ng/ml



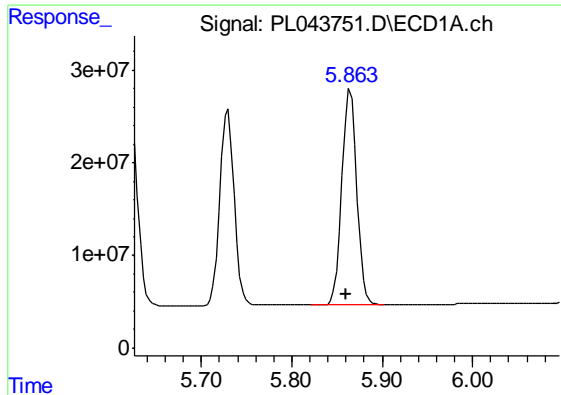
#12 4,4'-DDE

R.T.: 5.729 min
 Delta R.T.: 0.004 min
 Response: 234761670
 Conc: 52.89 ng/ml



#12 4,4'-DDE

R.T.: 6.351 min
 Delta R.T.: 0.000 min
 Response: 80923969
 Conc: 52.65 ng/ml



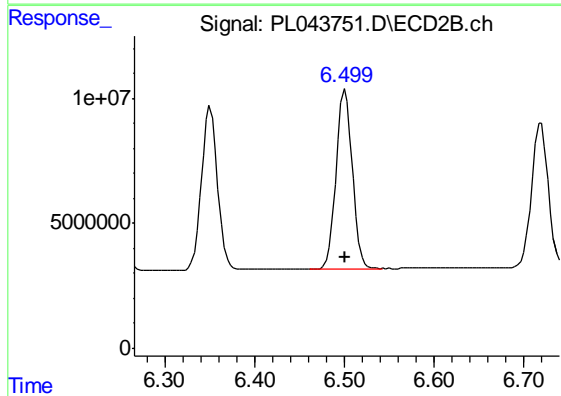
#13 Dieldrin

R.T.: 5.865 min
 Delta R.T.: 0.005 min
 Response: 263307215
 Conc: 52.80 ng/ml

Instrument :
 ECD_L
 ClientSampled :
 PSTDCCC050

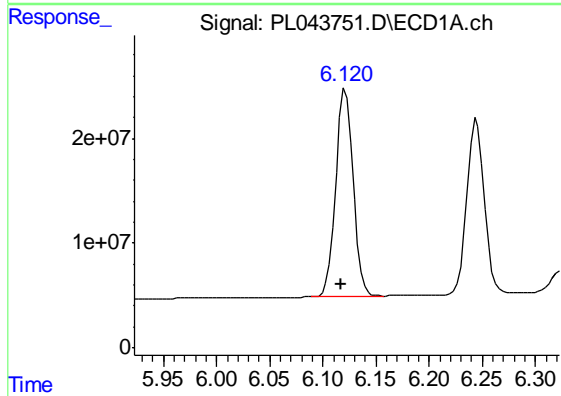
Manual Integrations
 APPROVED

Sohil
 1/11/2019 10:20:06 AM



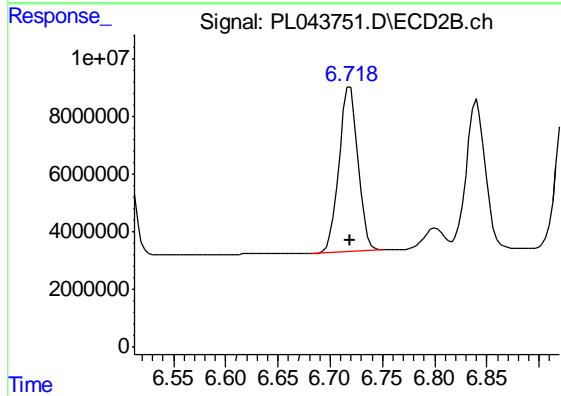
#13 Dieldrin

R.T.: 6.501 min
 Delta R.T.: 0.000 min
 Response: 90584567
 Conc: 53.29 ng/ml



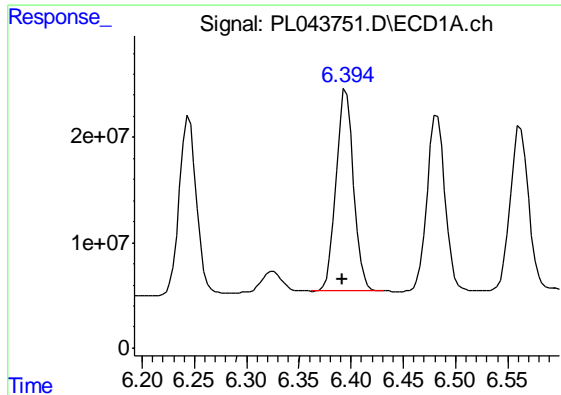
#14 Endrin

R.T.: 6.120 min
 Delta R.T.: 0.003 min
 Response: 224427533
 Conc: 52.04 ng/ml m



#14 Endrin

R.T.: 6.719 min
 Delta R.T.: 0.000 min
 Response: 72914714
 Conc: 53.41 ng/ml



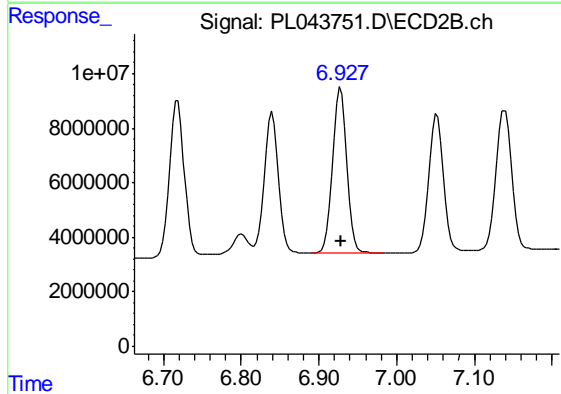
#15 Endosulfan II

R.T.: 6.395 min
 Delta R.T.: 0.003 min
 Response: 225005388
 Conc: 51.48 ng/ml

Instrument :
 ECD_L
 ClientSampled :
 PSTDCCC050

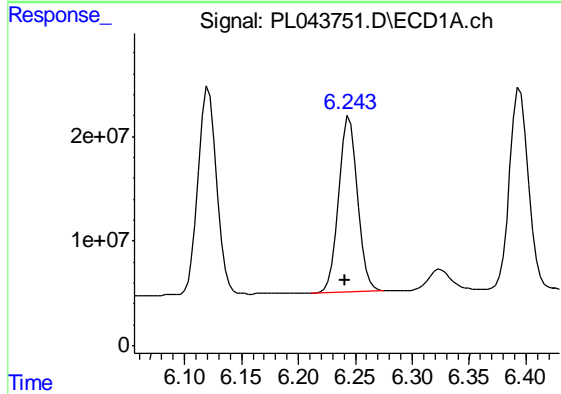
Manual Integrations
 APPROVED

Sohil
 1/11/2019 10:20:06 AM



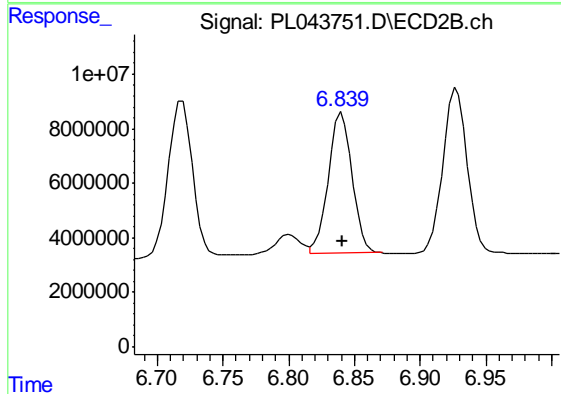
#15 Endosulfan II

R.T.: 6.928 min
 Delta R.T.: 0.000 min
 Response: 77690244
 Conc: 53.71 ng/ml



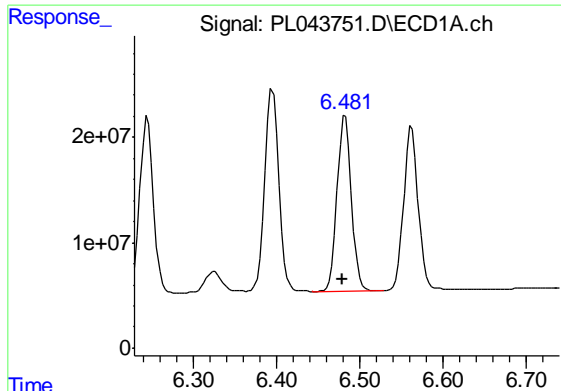
#16 4,4'-DDD

R.T.: 6.245 min
 Delta R.T.: 0.004 min
 Response: 191175432
 Conc: 51.53 ng/ml



#16 4,4'-DDD

R.T.: 6.840 min
 Delta R.T.: 0.000 min
 Response: 64865637
 Conc: 52.12 ng/ml



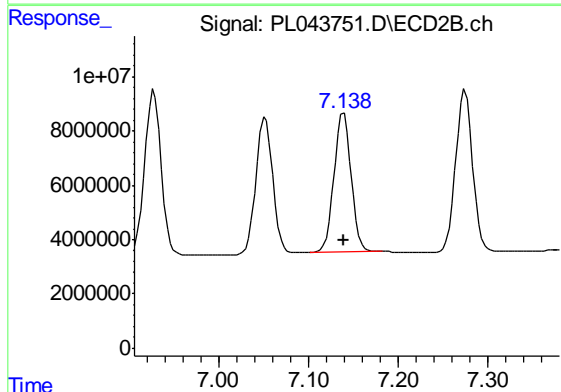
#17 4,4'-DDT

R.T.: 6.482 min
 Delta R.T.: 0.003 min
 Response: 198636132
 Conc: 52.68 ng/ml

Instrument :
 ECD_L
 ClientSampled :
 PSTDCCC050

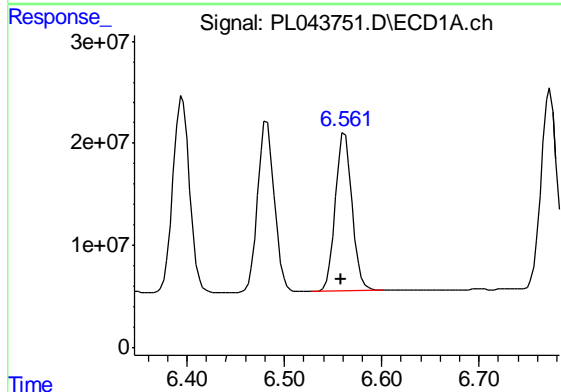
Manual Integrations
 APPROVED

Sohil
 1/11/2019 10:20:06 AM



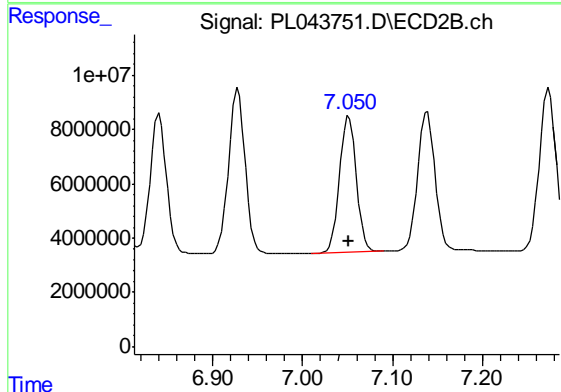
#17 4,4'-DDT

R.T.: 7.139 min
 Delta R.T.: 0.000 min
 Response: 68370068
 Conc: 50.79 ng/ml



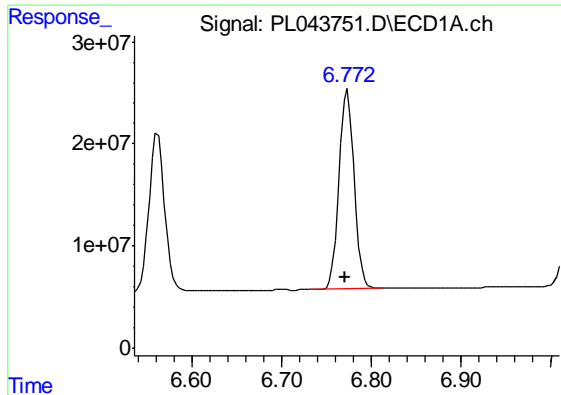
#18 Endrin aldehyde

R.T.: 6.562 min
 Delta R.T.: 0.004 min
 Response: 187640243
 Conc: 50.49 ng/ml



#18 Endrin aldehyde

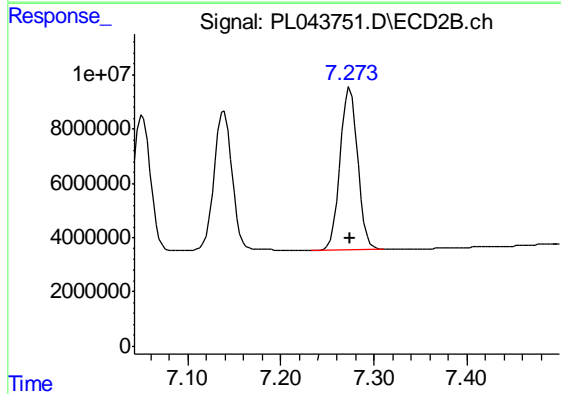
R.T.: 7.052 min
 Delta R.T.: 0.000 min
 Response: 65871037
 Conc: 53.25 ng/ml



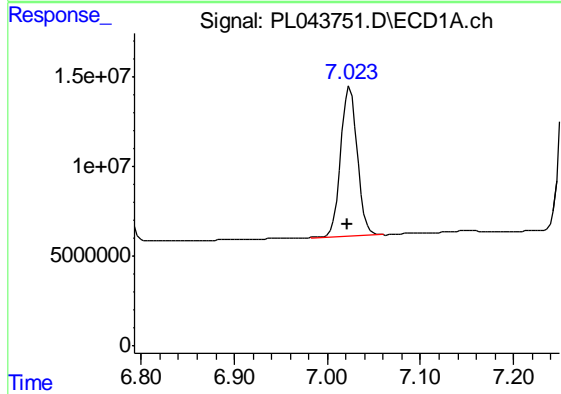
#19 Endosulfan Sulfate
 R.T.: 6.773 min
 Delta R.T.: 0.003 min
 Response: 228487503
 Conc: 51.26 ng/ml

Instrument :
 ECD_L
 ClientSampled :
 PSTDCCC050

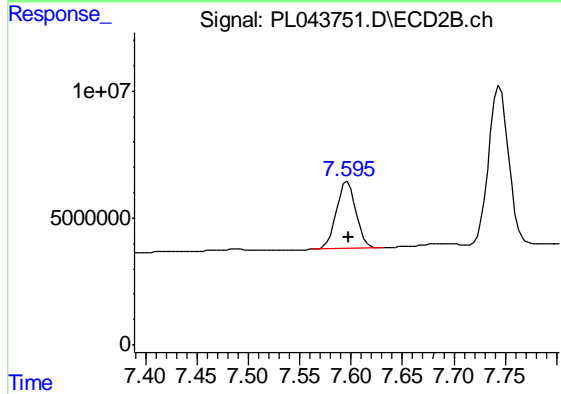
Manual Integrations
 APPROVED
 Sohil
 1/11/2019 10:20:06 AM



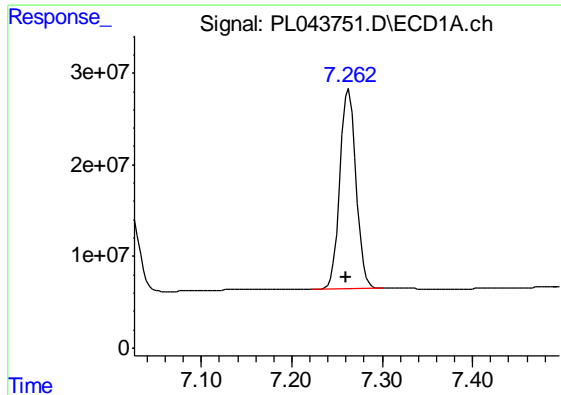
#19 Endosulfan Sulfate
 R.T.: 7.274 min
 Delta R.T.: 0.000 min
 Response: 77776878
 Conc: 53.05 ng/ml



#20 Methoxychlor
 R.T.: 7.024 min
 Delta R.T.: 0.003 min
 Response: 102705532
 Conc: 50.87 ng/ml



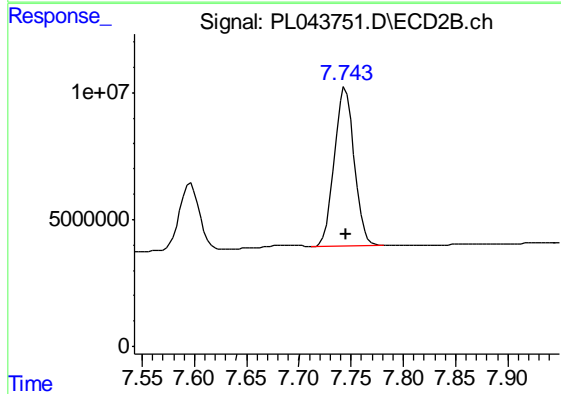
#20 Methoxychlor
 R.T.: 7.597 min
 Delta R.T.: -0.001 min
 Response: 34941593
 Conc: 52.80 ng/ml



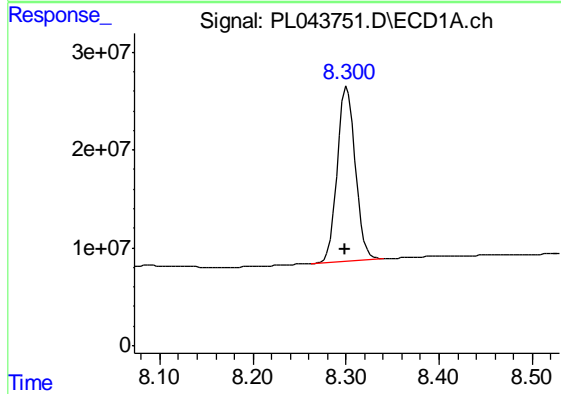
#21 Endrin ketone
 R.T.: 7.263 min
 Delta R.T.: 0.003 min
 Response: 267343429
 Conc: 51.56 ng/ml

Instrument :
 ECD_L
 ClientSampled :
 PSTDCCC050

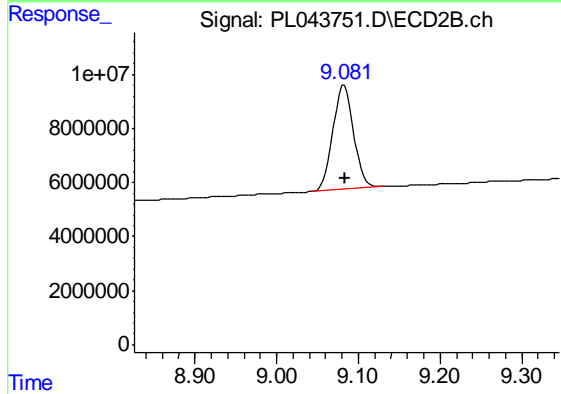
Manual Integrations
 APPROVED
 Sohil
 1/11/2019 10:20:06 AM



#21 Endrin ketone
 R.T.: 7.745 min
 Delta R.T.: 0.000 min
 Response: 83031092
 Conc: 51.62 ng/ml



#28 Decachlorobiphenyl
 R.T.: 8.301 min
 Delta R.T.: 0.002 min
 Response: 240510459
 Conc: 48.96 ng/ml



#28 Decachlorobiphenyl
 R.T.: 9.083 min
 Delta R.T.: 0.000 min
 Response: 68583106
 Conc: 51.02 ng/ml