

Data Path : Z:\pestpcbsrv\HPCHEM1\ECD_L\Data\PL011019\
 Data File : PL043756.D
 Signal(s) : Signal #1: ECD1A.ch Signal #2: ECD2B.ch
 Acq On : 10 Jan 2019 16:03
 Operator : AJ\SJ
 Sample : K1005-05
 Misc :
 ALS Vial : 9 Sample Multiplier: 1

Instrument :
 ECD_L
 ClientSampleId :
 HR-06-010918-C

Integration File signal 1: autoint1.e
 Integration File signal 2: autoint2.e
 Quant Time: Jan 10 23:55:13 2019
 Quant Method : Z:\pestpcbsrv\HPCHEM1\ECD_L\methods\PL011019.M
 Quant Title : GC Extractables
 QLast Update : Thu Jan 10 23:34:12 2019
 Response via : Initial Calibration
 Integrator: ChemStation

Volume Inj. : 2 µl
 Signal #1 Phase : ZB-MR1 Signal #2 Phase: ZB-MR2
 Signal #1 Info : 30M x 0.32mm x0.5 Signal #2 Info : 30M x 0.32mm x0.25µm

| Compound | RT#1 | RT#2 | Resp#1 | Resp#2 | ng/ml | ng/ml |
|----------|------|------|--------|--------|-------|-------|
|----------|------|------|--------|--------|-------|-------|

 System Monitoring Compounds

| | | | | | | |
|---------------------|-------|-------|----------|----------|--------|--------|
| 1) SA Tetrachlo... | 3.568 | 4.009 | 40381560 | 17591037 | 10.251 | 10.570 |
| 28) SA Decachlor... | 8.301 | 9.082 | 50671025 | 15087883 | 10.316 | 11.224 |

Target Compounds

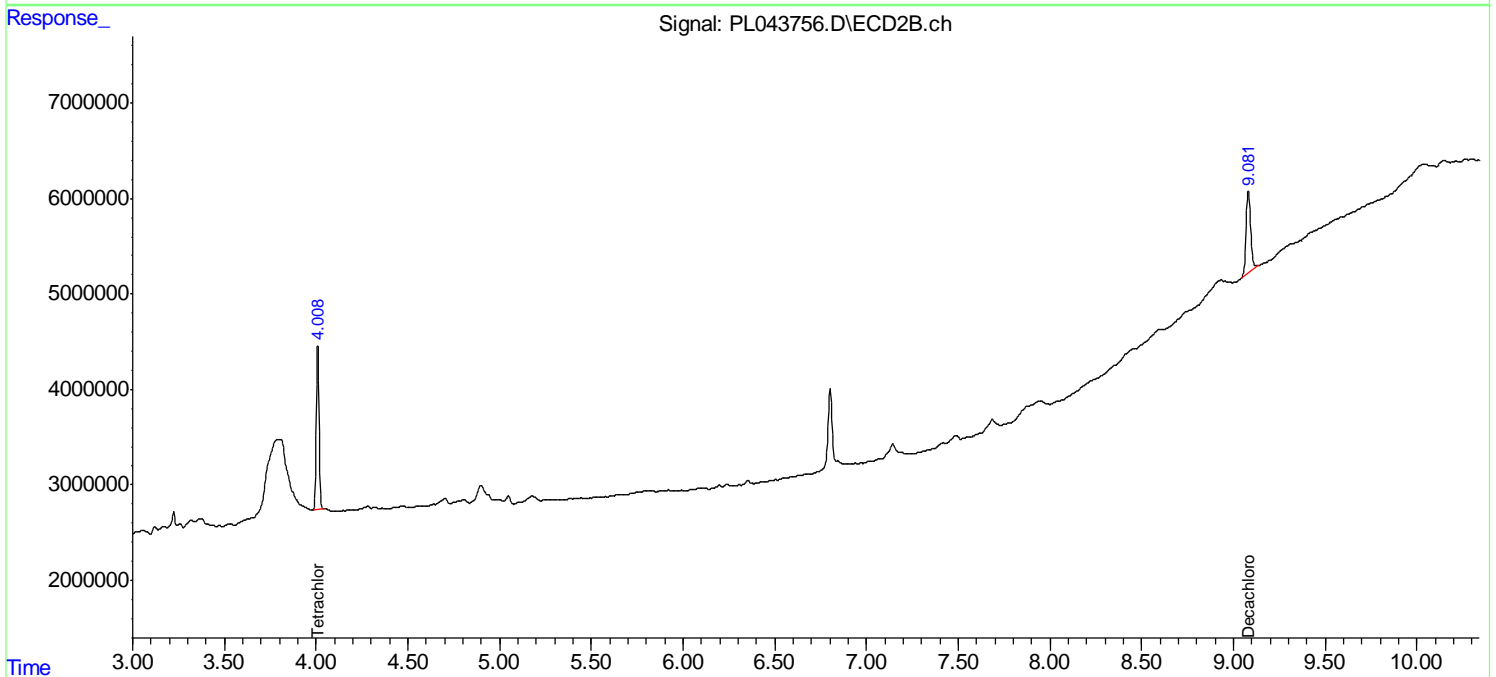
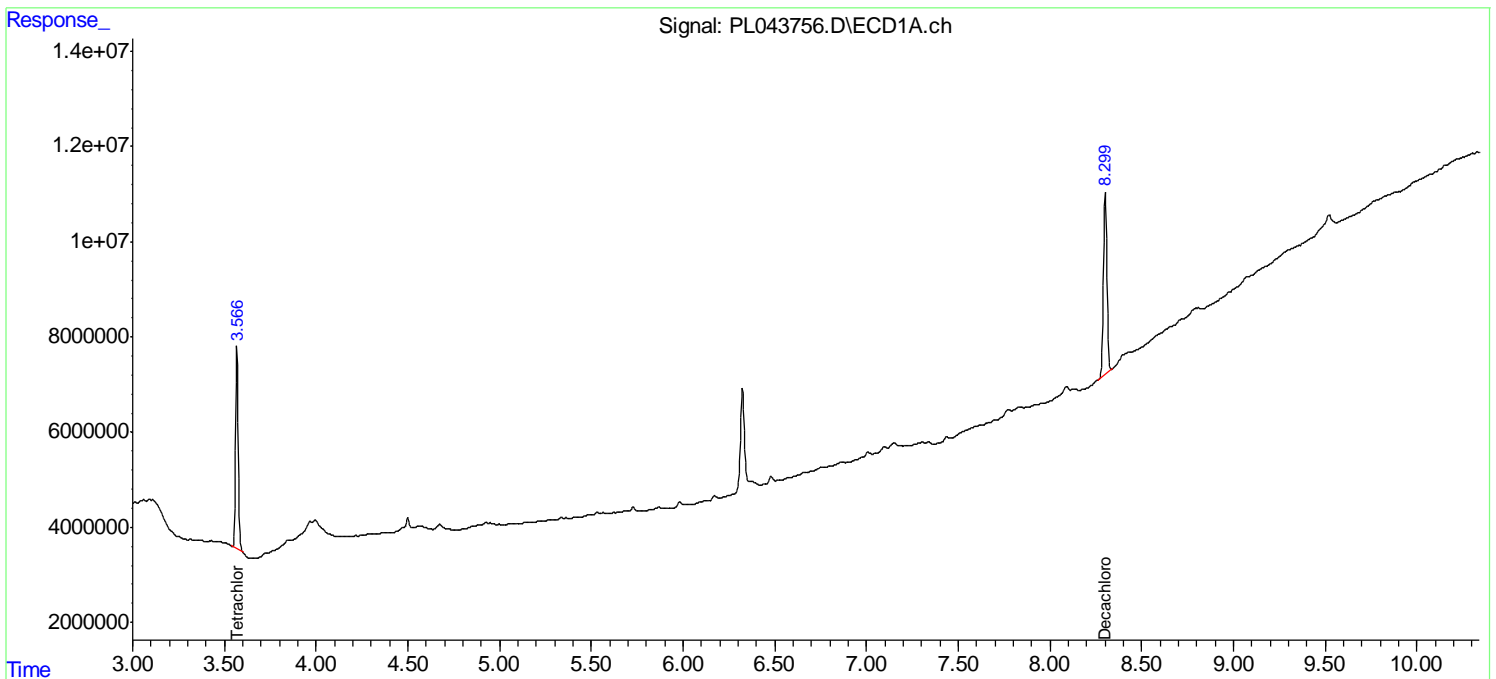
(f)=RT Delta > 1/2 Window (#)=Amounts differ by > 25% (m)=manual int.

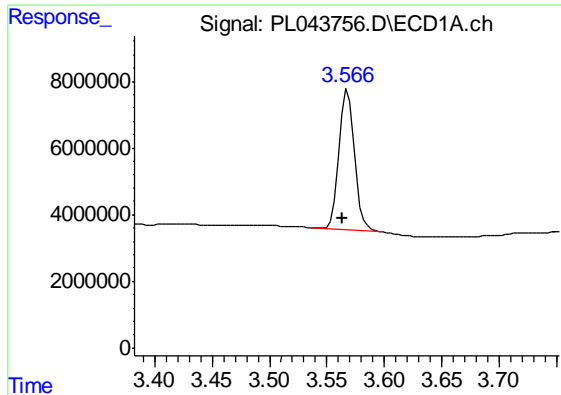
Data Path : Z:\pestpcbsrv\HPCHEM1\ECD_L\Data\PL011019\
Data File : PL043756.D
Signal(s) : Signal #1: ECD1A.ch Signal #2: ECD2B.ch
Acq On : 10 Jan 2019 16:03
Operator : AJ\SJ
Sample : K1005-05
Misc :
ALS Vial : 9 Sample Multiplier: 1

Instrument :
ECD_L
ClientSampled :
HR-06-010918-C

Integration File signal 1: autoint1.e
Integration File signal 2: autoint2.e
Quant Time: Jan 10 23:55:13 2019
Quant Method : Z:\pestpcbsrv\HPCHEM1\ECD_L\methods\PL011019.M
Quant Title : GC Extractables
QLast Update : Thu Jan 10 23:34:12 2019
Response via : Initial Calibration
Integrator: ChemStation

Volume Inj. : 2 µl
Signal #1 Phase : ZB-MR1 Signal #2 Phase: ZB-MR2
Signal #1 Info : 30M x 0.32mm x0.5 Signal #2 Info : 30M x 0.32mm x0.25µm

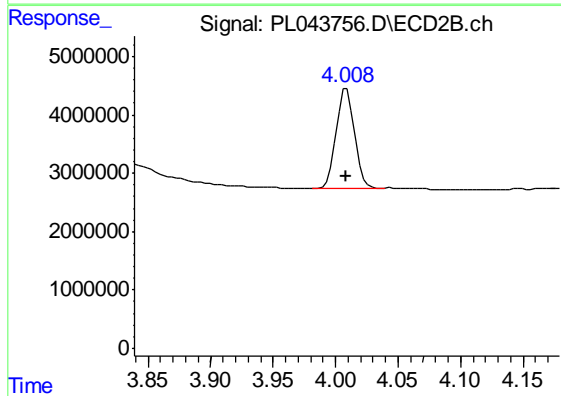




#1 Tetrachloro-m-xylene

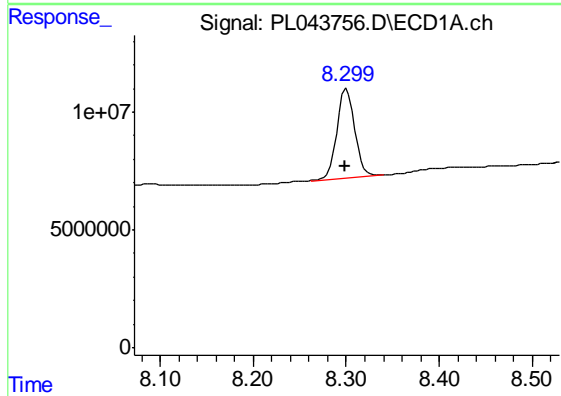
R.T.: 3.568 min
 Delta R.T.: 0.004 min
 Response: 40381560
 Conc: 10.25 ng/ml

Instrument :
 ECD_L
 ClientSampleId :
 HR-06-010918-C



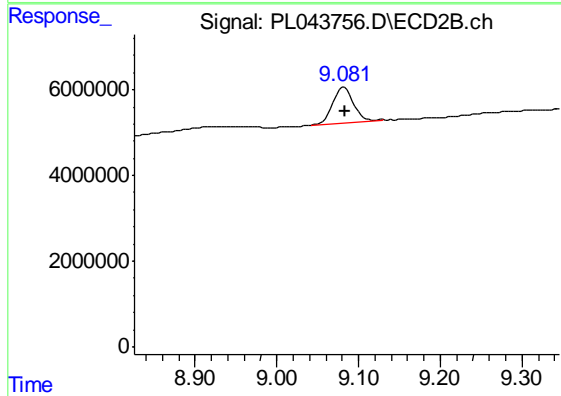
#1 Tetrachloro-m-xylene

R.T.: 4.009 min
 Delta R.T.: 0.000 min
 Response: 17591037
 Conc: 10.57 ng/ml



#28 Decachlorobiphenyl

R.T.: 8.301 min
 Delta R.T.: 0.002 min
 Response: 50671025
 Conc: 10.32 ng/ml



#28 Decachlorobiphenyl

R.T.: 9.082 min
 Delta R.T.: 0.000 min
 Response: 15087883
 Conc: 11.22 ng/ml