

Data Path : Z:\pestpcbsrv\HPCHEM1\ECD_L\Data\PL011019\
 Data File : PL043775.D
 Signal(s) : Signal #1: ECD1A.ch Signal #2: ECD2B.ch
 Acq On : 10 Jan 2019 20:45
 Operator : AJ\SJ
 Sample : K1099-17
 Misc :
 ALS Vial : 26 Sample Multiplier: 1

Instrument :
 ECD_L
 ClientSampleID :
 TP-19-20

Integration File signal 1: autoint1.e
 Integration File signal 2: autoint2.e
 Quant Time: Jan 11 00:01:04 2019
 Quant Method : Z:\pestpcbsrv\HPCHEM1\ECD_L\methods\PL011019.M
 Quant Title : GC Extractables
 QLast Update : Thu Jan 10 23:34:12 2019
 Response via : Initial Calibration
 Integrator: ChemStation

Volume Inj. : 2 µl
 Signal #1 Phase : ZB-MR1 Signal #2 Phase: ZB-MR2
 Signal #1 Info : 30M x 0.32mm x0.5 Signal #2 Info : 30M x 0.32mm x0.25µm

Compound	RT#1	RT#2	Resp#1	Resp#2	ng/ml	ng/ml
----------	------	------	--------	--------	-------	-------

 System Monitoring Compounds

1) SA Tetrachlo...	3.561	4.009	48325759	20901700	12.267	12.560
28) SA Decachlor...	8.293	9.083	45485055	13714881	9.260	10.202

Target Compounds

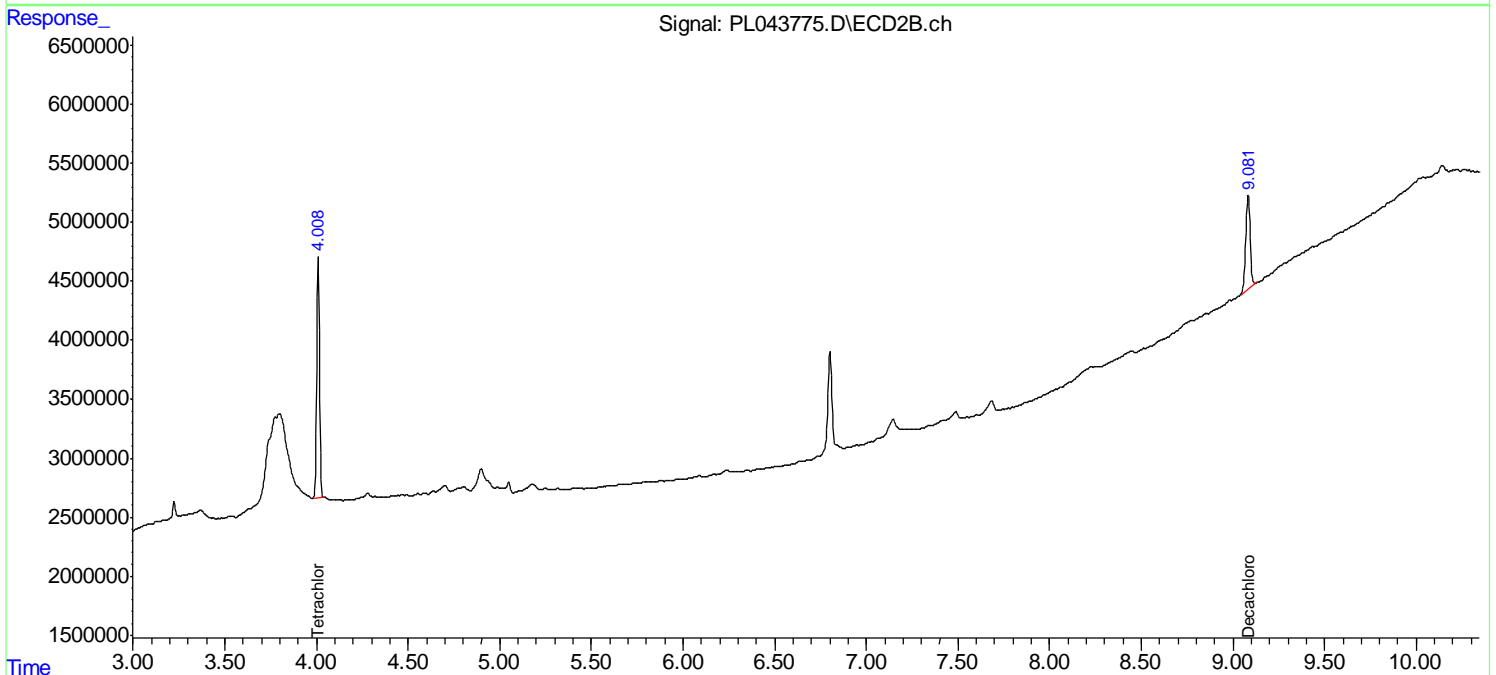
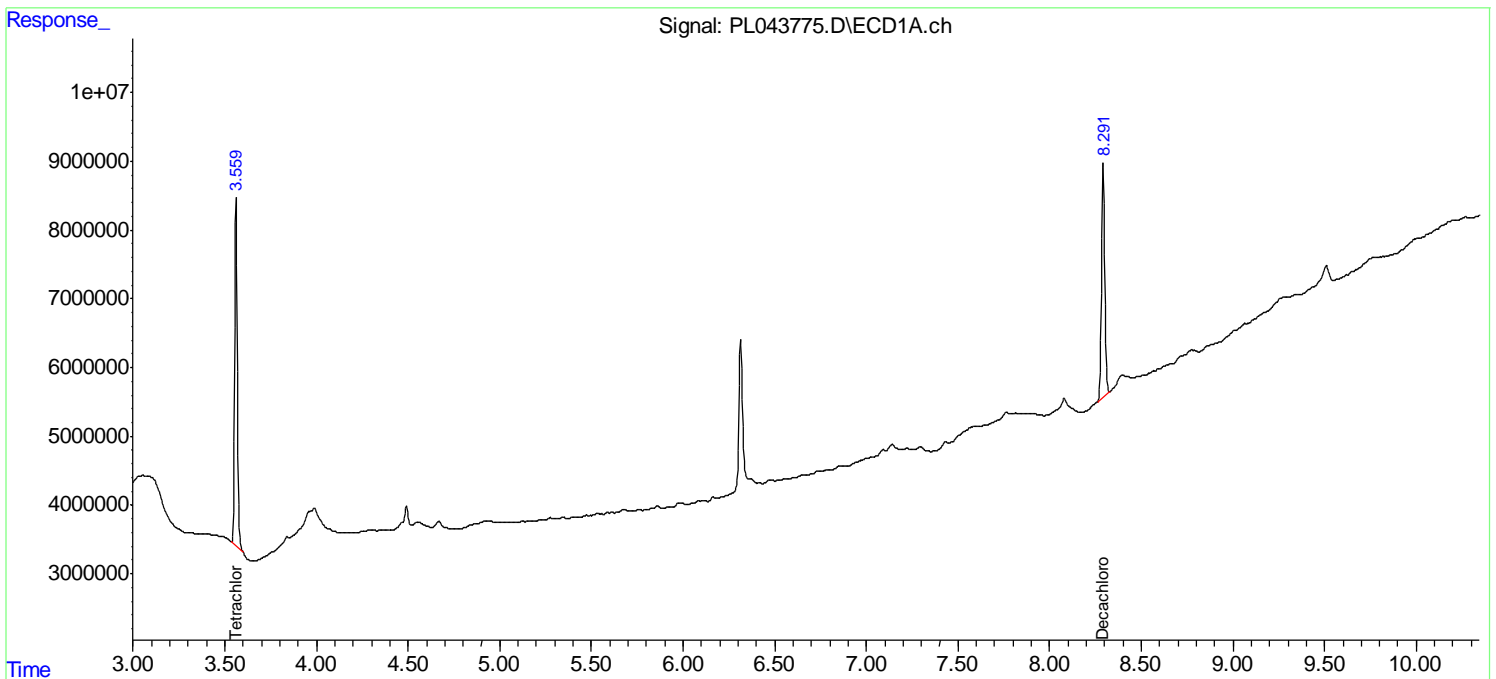
(f)=RT Delta > 1/2 Window (#)=Amounts differ by > 25% (m)=manual int.

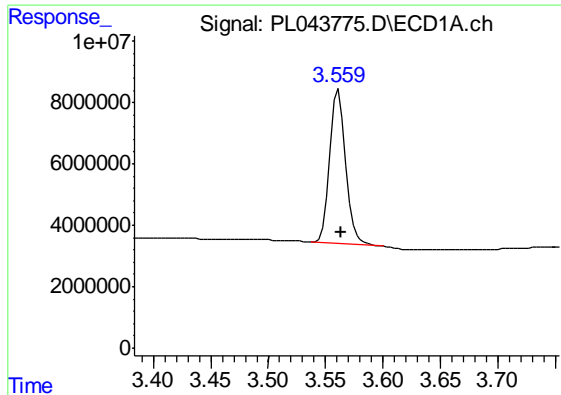
Data Path : Z:\pestpcbsrv\HPCHEM1\ECD_L\Data\PL011019\
 Data File : PL043775.D
 Signal(s) : Signal #1: ECD1A.ch Signal #2: ECD2B.ch
 Acq On : 10 Jan 2019 20:45
 Operator : AJ\SJ
 Sample : K1099-17
 Misc :
 ALS Vial : 26 Sample Multiplier: 1

Instrument :
 ECD_L
 ClientSampled :
 TP-19-20

Integration File signal 1: autoint1.e
 Integration File signal 2: autoint2.e
 Quant Time: Jan 11 00:01:04 2019
 Quant Method : Z:\pestpcbsrv\HPCHEM1\ECD_L\methods\PL011019.M
 Quant Title : GC Extractables
 QLast Update : Thu Jan 10 23:34:12 2019
 Response via : Initial Calibration
 Integrator: ChemStation

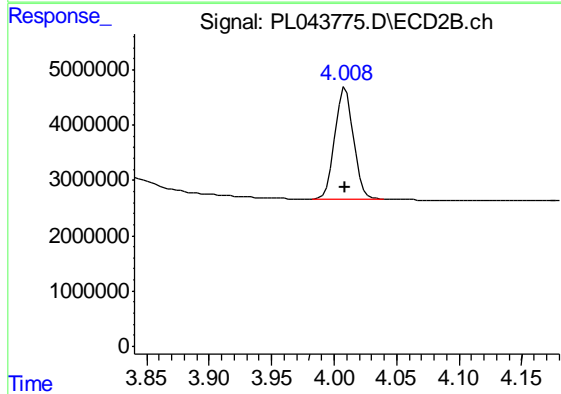
Volume Inj. : 2 µl
 Signal #1 Phase : ZB-MR1 Signal #2 Phase: ZB-MR2
 Signal #1 Info : 30M x 0.32mm x0.5 Signal #2 Info : 30M x 0.32mm x0.25µm



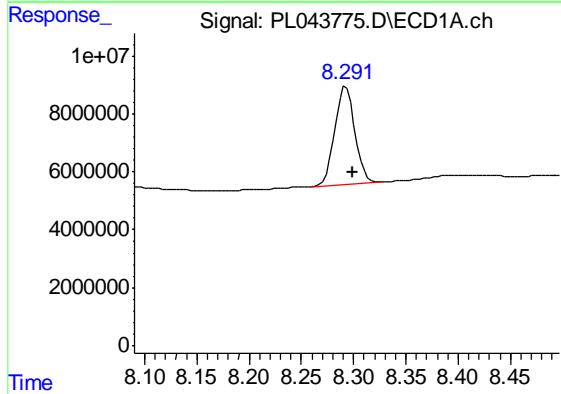


#1 Tetrachloro-m-xylene
 R.T.: 3.561 min
 Delta R.T.: -0.003 min
 Response: 48325759
 Conc: 12.27 ng/ml

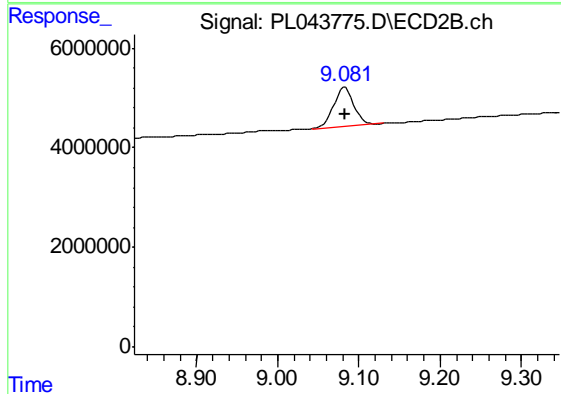
Instrument :
 ECD_L
 ClientSampleId :
 TP-19-20



#1 Tetrachloro-m-xylene
 R.T.: 4.009 min
 Delta R.T.: 0.000 min
 Response: 20901700
 Conc: 12.56 ng/ml



#28 Decachlorobiphenyl
 R.T.: 8.293 min
 Delta R.T.: -0.006 min
 Response: 45485055
 Conc: 9.26 ng/ml



#28 Decachlorobiphenyl
 R.T.: 9.083 min
 Delta R.T.: 0.000 min
 Response: 13714881
 Conc: 10.20 ng/ml